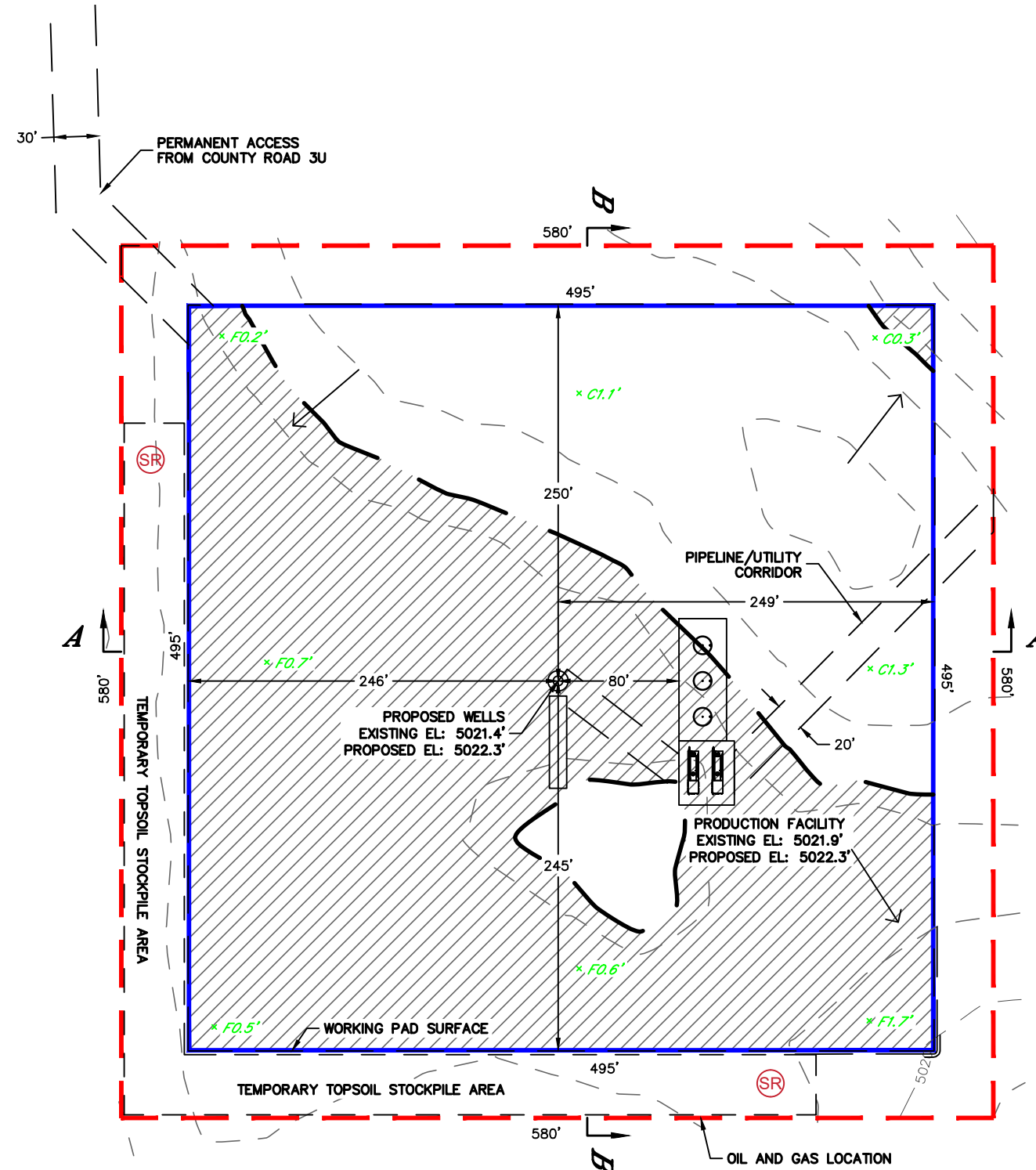




Lat40°, Inc. 6250 W. 10th Street, Unit 2, Greeley, CO 970-515-5294
CONSTRUCTION LAYOUT DRAWINGS - PLAN VIEW
 MARQUIS 1 PAD
 HUNTINGTON ENERGY, LLC

Q: NW/4
 SECTION: 23
 TOWNSHIP: 7S
 RANGE: 52W
 6TH. P.M.
 LINCOLN COUNTY, CO



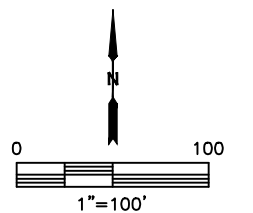
CUT VOLUME: 3,225 CY
FILL VOLUME: 3,215 CY
TOPSOIL (6") VOLUME: 6,230 CY
EXPORT VOLUME: 10 CY

OIL AND GAS LOCATION: ±7.7 ACRES
WORKING PAD SURFACE: ±5.6 ACRES
PERMANENT ACCESS ROAD: ±1.2 ACRES
PIPELINE/UTILITY CORRIDOR: ±0.2 ACRES

LEGEND

- WORKING PAD SURFACE
- OIL AND GAS LOCATION
- FILL
- INSTALL SEDIMENT BASIN
- DITCH & BERM
- EXISTING CONTOUR - 1' INTERVAL
- PROPOSED CONTOUR - 1' INTERVAL
- CUT/FILL LINE
- SURFACE ROUGHENING
- INSTALL CULVERT PROTECTION
- INSTALL CULVERT
- FLOW ARROW
- INSTALL EROSION CONTROL BLANKET
- PROPOSED CUT/FILL DEPTH

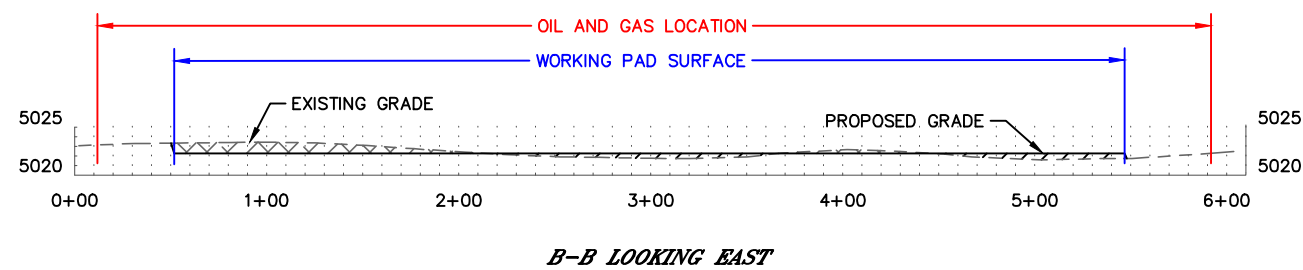
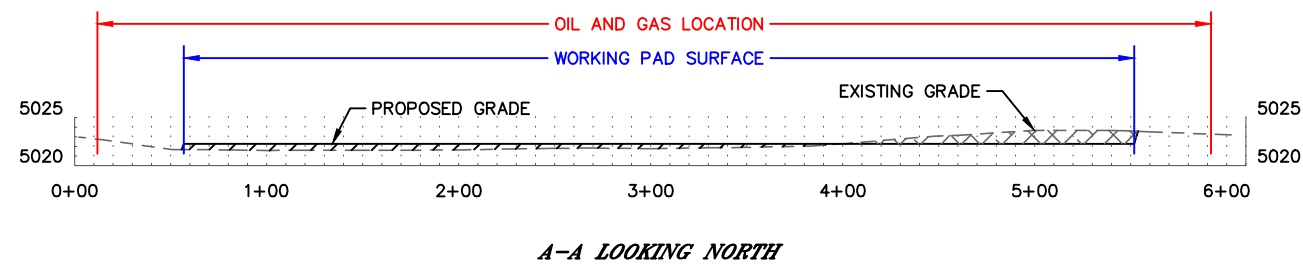
NOTE:
 1. Ground elevations are based on an observed GPS elevation (NAVD 1988 DATUM).





Lat40°, Inc. 6250 W. 10th Street, Unit 2, Greeley, CO 970-515-5294
CONSTRUCTION LAYOUT DRAWING - CROSS-SECTION
 MARQUIS 1 PAD
 HUNTINGTON ENERGY, LLC

Q: NW/4
 SECTION: 23
 TOWNSHIP: 7S
 RANGE: 52W
 6TH. P.M.
 LINCOLN COUNTY, CO



LEGEND

	FILL
	CUT
	WORKING PAD SURFACE
	OIL AND GAS LOCATION

HORIZONTAL SCALE: 1"=100', VERTICAL SCALE: 1"=20'

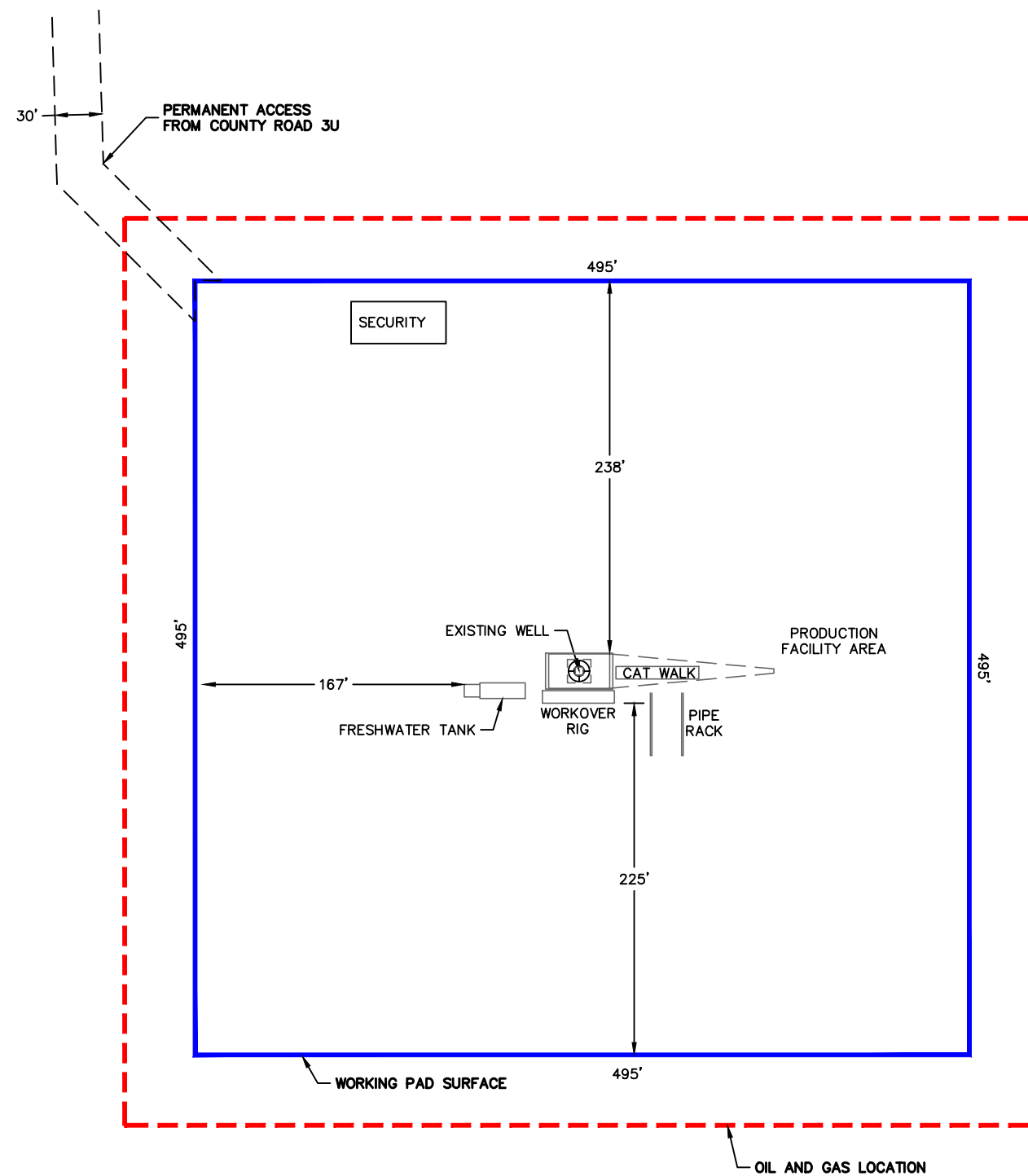


Lat40°, Inc. 6250 W. 10th Street, Unit 2, Greeley, CO 970-515-5294

PRELIMINARY RIG LAYOUT DRAWING

MARQUIS 1 PAD
HUNTINGTON ENERGY, LLC

Q: NW/4
SECTION: 23
TOWNSHIP: 7S
RANGE: 52W
6TH. P.M.
LINCOLN COUNTY, CO

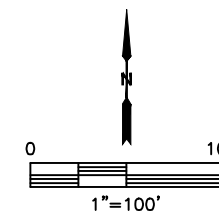


NOTES:
LAYOUTS SHOWN HEREON ARE SUBJECT TO CHANGES DUE TO EQUIPMENT AVAILABILITY AND TECHNOLOGY CHANGES.

LEGEND

WORKING PAD SURFACE

OIL AND GAS LOCATION



Great Plains Energy Operating, LLC
Marquis #1
SWNW Section 23, T7S R52W
Lincoln County, Colorado

COMPLETIONS LAYOUT DIAGRAM

There will be no completions operations on this location.

Great Plains Energy Operating, LLC
Marquis #1
SWNW Section 23, T7S R52W
Lincoln County, Colorado

FLOWBACK LAYOUT DIAGRAM

There will be no flowback operations at this location.

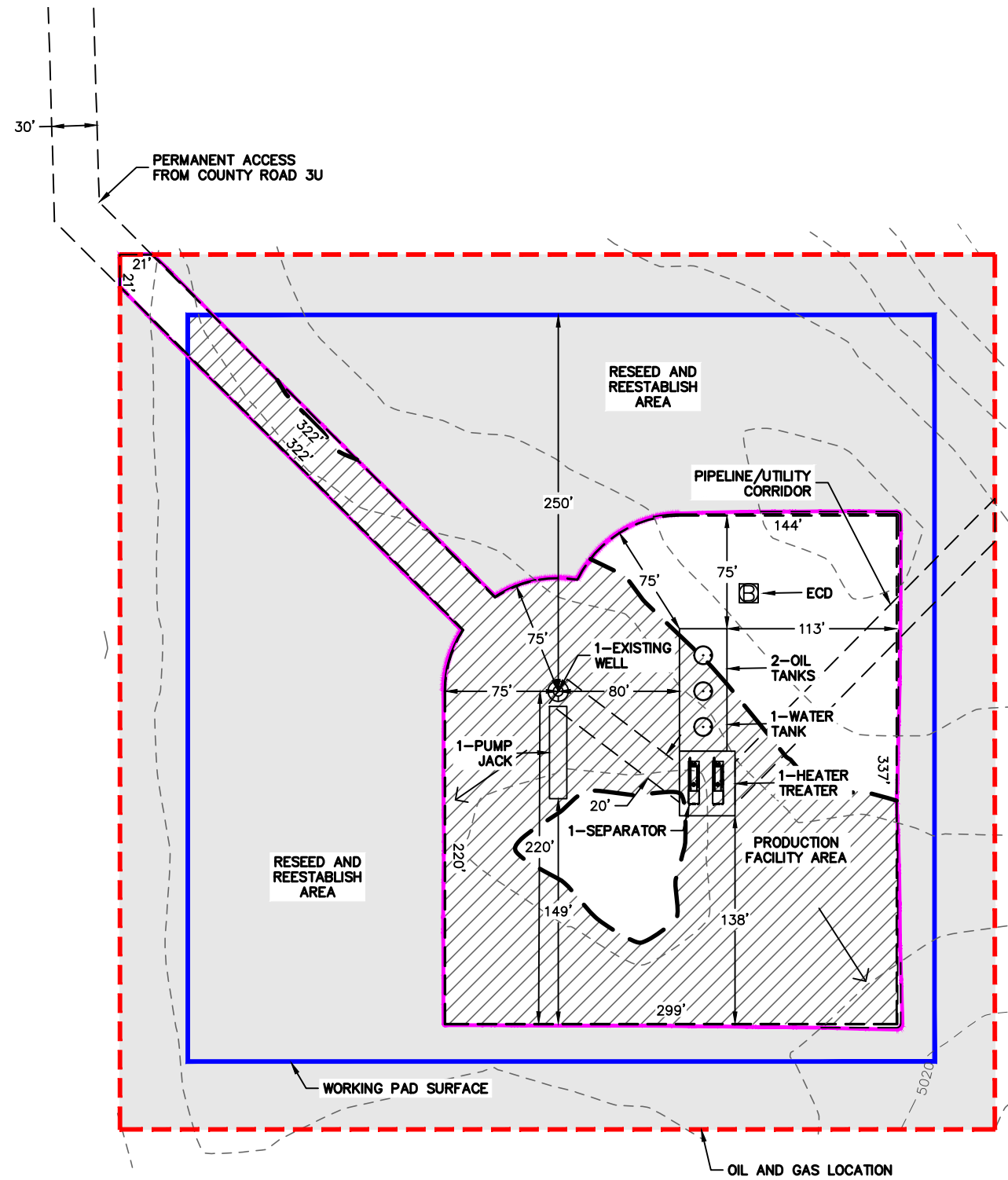


Lat40°, Inc. 6250 W. 10th Street, Unit 2, Greeley, CO 970-515-5294

OIL AND GAS FACILITIES LAYOUT DRAWING

MARQUIS 1 PAD
HUNTINGTON ENERGY, LLC

Q: NW/4
SECTION: 23
TOWNSHIP: 7S
RANGE: 52W
6TH. P.M.
LINCOLN COUNTY, CO



*OIL AND GAS LOCATION: ±7.7 ACRES
RECLAIMED AREA: ±5.2 ACRES
UNRECLAIMED AREA: ±2.5 ACRES*

LEGEND

- UNRECLAIMED AREA
- WORKING PAD SURFACE
- OIL AND GAS LOCATION
- FILL
- RECLAIMED AREA - RESEED & REESTABLISH
- PROPOSED EDGE OF GRAVEL
- EXISTING CONTOUR - 1' INTERVAL
- PROPOSED CONTOUR - 1' INTERVAL
- CUT/FILL LINE
- CULVERT PROTECTION
- CULVERT
- FLOW ARROW

NOTE:
1. Ground elevations are based on an observed GPS elevation (NAVD 1988 DATUM).
2. All equipment is PROPOSED unless otherwise noted.

