

Great Plains Energy Operating, LLC  
Marquis #1  
SWNW Section 23, T7S R52W  
Lincoln County, Colorado

---

**WILDLIFE PROTECTION PLAN**

---

Great Plains Energy Operating, LLC (Great Plains) has drafted this plan in accordance with Rules 304.c.(17) and 1201.a.

Great Plains is committed to protecting the wildlife resources in this project area. The Marquis #1 well pad is not located within any designated High Priority Habitat. It is also not located within Black Bear Habitat. An Alternative Location Analysis process per Rule 304.b.(2).B.viii was not conducted because this is not located within or near any designated High Priority Habitat.

This plan covers one oil and gas location – the Marquis #1.

The location and access road are situated within cropland.

Great Plains' implementation of ECMC Rules 1202.a and 1202.b are listed below.

<b>1202.a.(1)</b>	This location is not located in Black Bear Habitat.
<b>1202.a.(2)</b>	There are no plans to withdraw or discharge into surface waters.
<b>1202.a.(3)</b>	Great Plains will not situate new staging, refueling, or Chemical storage areas within 500 feet of the Ordinary High-Water Mark ("OHWM") of any river, perennial or intermittent stream, lake, pond, or wetland as part of this project.
<b>1202.a.(4)</b>	Great Plains is not proposing to construct or utilize any type of pit with this project.
<b>1202.a.(5)</b>	During flowline construction, if Great Plains' operations warrant leaving trenches open for more than 5 consecutive days during construction of Pipelines regulated pursuant to the Commission's 1100 Series Rules, Operator will install wildlife escape ramps at a minimum of one ramp per 1/4 mile of trench.
<b>1202.a.(6)</b>	When conducting interim and final Reclamation for the location and access road pursuant to Rules 1003 and 1004, Great Plains will use seed mixes as per Surface Owner's approval and intended future usage of the location. When conducting Reclamation for the off-location flowline, Great Plains will

	use CPW-recommended seed mixes for Reclamation when consistent with the Surface Owner's approval and any local soil conservation district requirements.
<b>1202.a.(7)</b>	If Great Plains installs a fence on location, they will use CPW-recommended fence designs when consistent with the Surface Owner's approval and any Relevant Local Government requirements.
<b>1202.a.(8)</b>	Great Plains will conduct all vegetation removal necessary for Oil and Gas Operations outside of the nesting season for migratory birds (April 1 to August 31). For any vegetation removal that must be scheduled between April 1 to August 31, Operator may implement appropriate hazing or other exclusion measures prior to April 1 to avoid take of migratory birds. If hazing or other exclusion measures are not implemented, Operator will conduct pre-construction nesting migratory bird surveys within the approved disturbance area prior to any vegetation removal during the nesting season. If active nests are located, Operator will provide work zone buffers around active nests.
<b>1202.a.(9)</b>	Great Plains is not proposing to construct or utilize any type of pit with this project.
<b>1202.a.(10)</b>	This oil and gas location is not located between 500 feet and 1000 feet hydraulically upgradient from a High Priority Habitat identified in Rule 1202.c.(1).Q-S.
<b>1202.b</b>	Great Plains is not proposing to construct any flowline or utility crossings of perennial streams identified as aquatic High Priority Habitat.

Great Plains proposes the below best management practices for their operations.

**ALL PHASES:**

- Minimize the amount of traffic on lease roads within 3 hours of sunrise and sunset as much as possible during all phases.
- No feeding of wildlife will be allowed on location.
- Inform and educate employees and contractors on wildlife conservation practices, including no harassment or feeding of wildlife.
- At this location, Great Plains will not situate new staging, refueling, or Chemical storage areas within 500 feet of the Ordinary High-Water Mark ("OHWM") of any river, perennial or intermittent stream, lake, pond, or wetland.

- This location will have no pits.
- No pipelines are currently proposed to be constructed with this project.
- This location is not within 1000 feet of a High Priority Habitat.
- Avoid dust suppression activities within 300 feet of the ordinary high-water mark of any reservoir, lake, wetland, or natural perennial or seasonally flowing stream or river.

#### **CONSTRUCTION PHASE:**

- If Great Plains plans to conduct any vegetation removal necessary for construction during the nesting season for migratory birds (April 1 to August 31), a pre-construction nesting migratory bird survey will be conducted within the approved disturbance area.
- Inspect locations daily for wildlife presence on site, to include light fixtures. Inspect locations daily for wildlife presence on site, to include light fixtures.

#### **DRILLING PHASE:**

- Operator will utilize a pit-less, closed loop system for drilling. Wells shall be drilled, completed, and operated using closed loop pit-less systems for containment and/or recycling of all drilling, completion, flowback and produced fluids.
- Inspect locations daily for wildlife presence on site, to include light fixtures. Inspect locations daily for wildlife presence on site, to include light fixtures.

#### **PRODUCTION PHASE:**

- Install exclusionary devices to prevent bird and other wildlife access to equipment stacks, vents, and openings.
- Install screening or other devices on the stacks and on other openings of heater treaters or fired vessels to prevent entry by migratory birds
- During off-flowline reclamation, wildlife-friendly seed mixes will be used with permission from the surface owner.



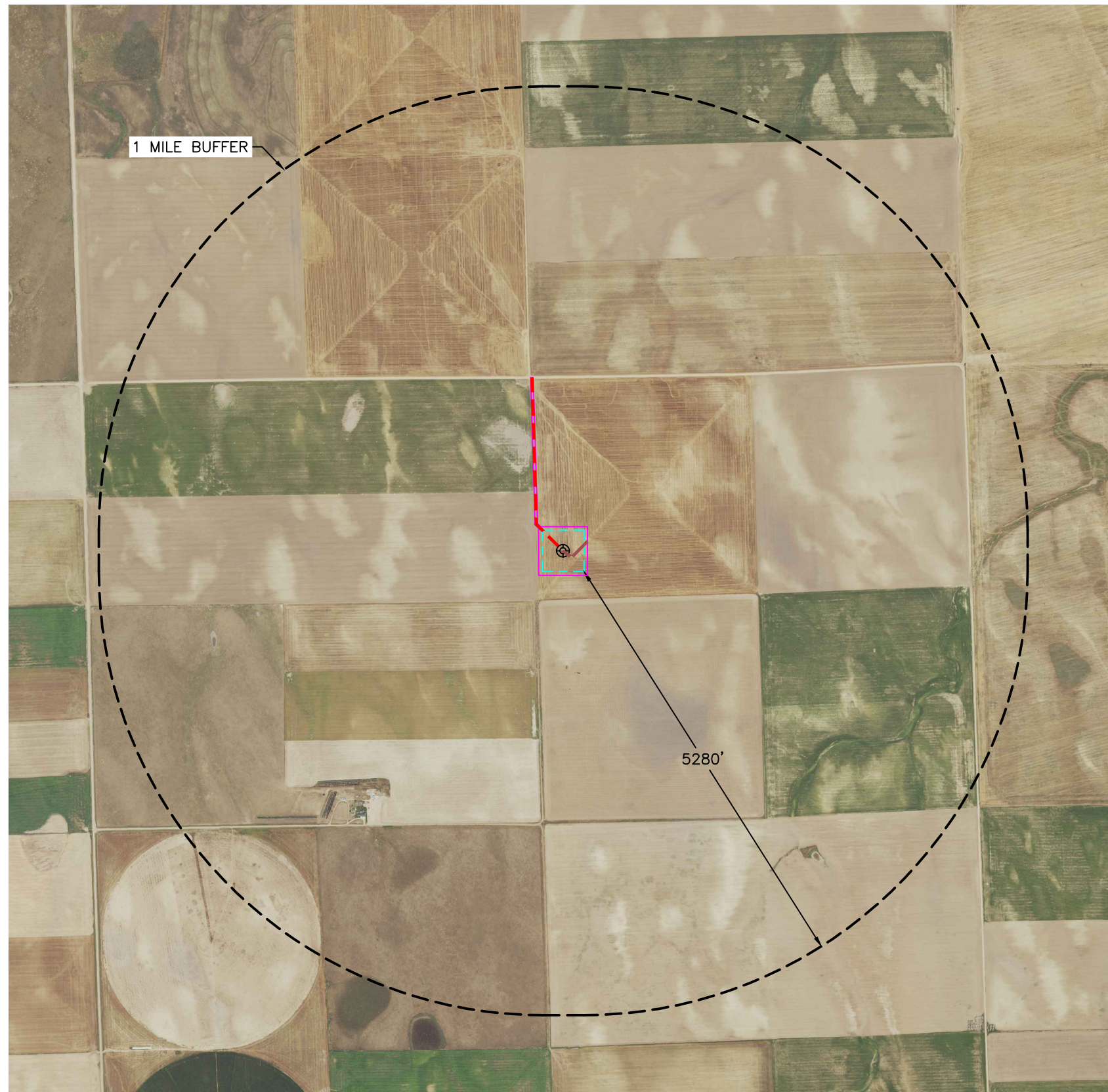
Lat40°, Inc. 6250 W. 10th Street, Unit 2, Greeley, CO 970-515-5294

# WILDLIFE HABITAT DRAWING

MARQUIS 1 PAD

GREAT PLAINS ENERGY OPERATING, LLC

Q: NW/4  
SECTION: 23  
TOWNSHIP: 7S  
RANGE: 52W  
6TH. P.M.  
LINCOLN COUNTY, CO

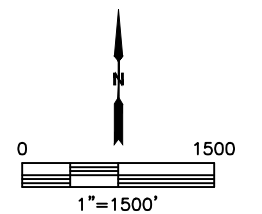


**WILDLIFE HABITAT:**  
(MEASURED FROM EDGE OF WORKING PAD SURFACE)  
NO WILDLIFE HABITAT IDENTIFIED  
WITHIN 1 MILE BUFFER.

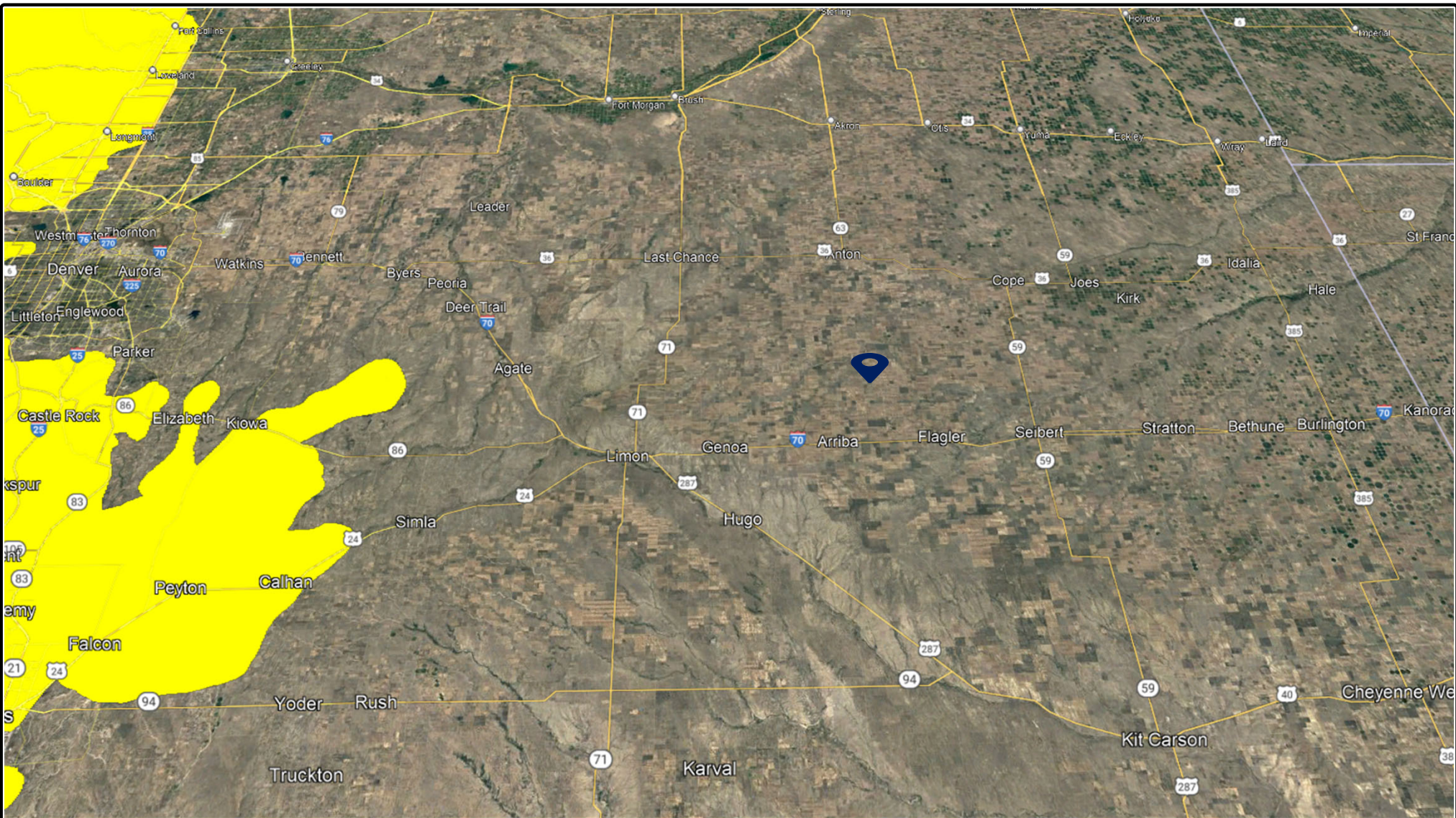
- LEGEND
- EXISTING WELL LOCATION
  - ID DESIGNATION
  - WORKING PAD SURFACE
  - AREA OF DISTURBANCE
  - HIGH PRIORITY HABITAT
  - ACCESS ROAD
  - PROPOSED FLOWLINE CORRIDOR

NOTE:  
THIS MAP IS A COMPILATION OF PUBLICLY AVAILABLE DATA. THE ACCURACY AND COMPLETENESS OF SAID DATA HAD NOT BEEN VERIFIED BY LAT40, INC. EXISTING CONDITIONS MAY DIFFER FROM WHAT IS SHOWN.

DATA SOURCE: COGCC, USFWS, ECOS, CPW





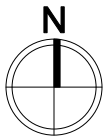
DATE: 9/26/2022  
PROJECT#: 2022226



Marquis #1  
 Great Plains Energy Operating, LLC  
 SWNW S23 T7S R52W  
 Black Bear Habitat Map

Legend

-  Black Bear Habitat
-  Marquis #1 Location



Prepared By:  
 Ardor Environmental LLC

October 4, 2022