



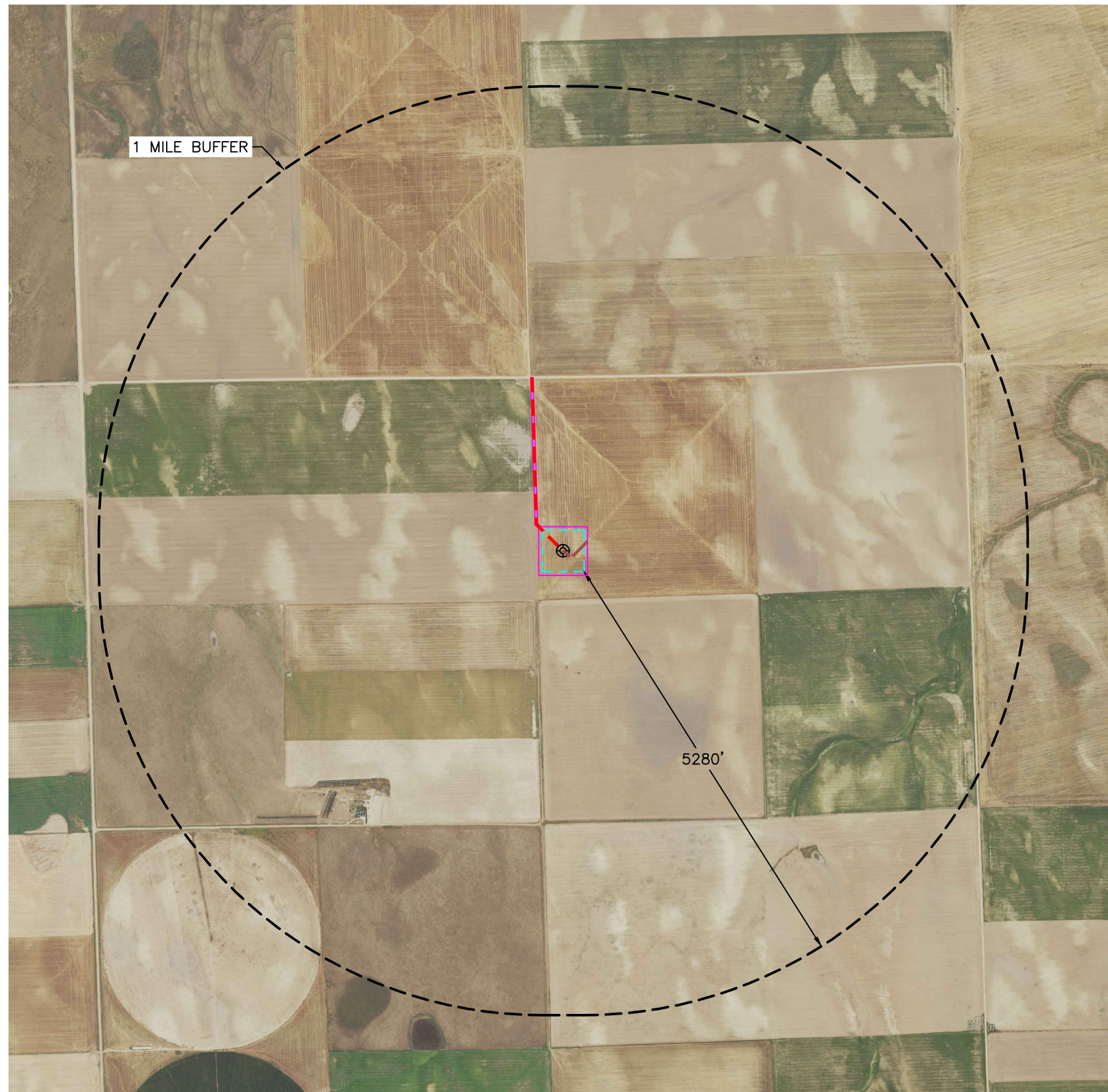
Lat40°, Inc. 6250 W. 10th Street, Unit 2, Greeley, CO 970-515-5294

# WILDLIFE HABITAT DRAWING

MARQUIS 1 PAD

GREAT PLAINS ENERGY OPERATING, LLC

Q: NW/4  
SECTION: 23  
TOWNSHIP: 7S  
RANGE: 52W  
6TH. P.M.  
LINCOLN COUNTY, CO

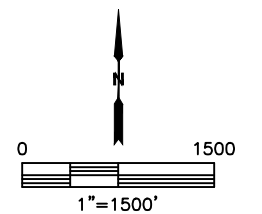


WILDLIFE HABITAT:  
(MEASURED FROM EDGE OF WORKING PAD SURFACE)  
NO WILDLIFE HABITAT IDENTIFIED  
WITHIN 1 MILE BUFFER.

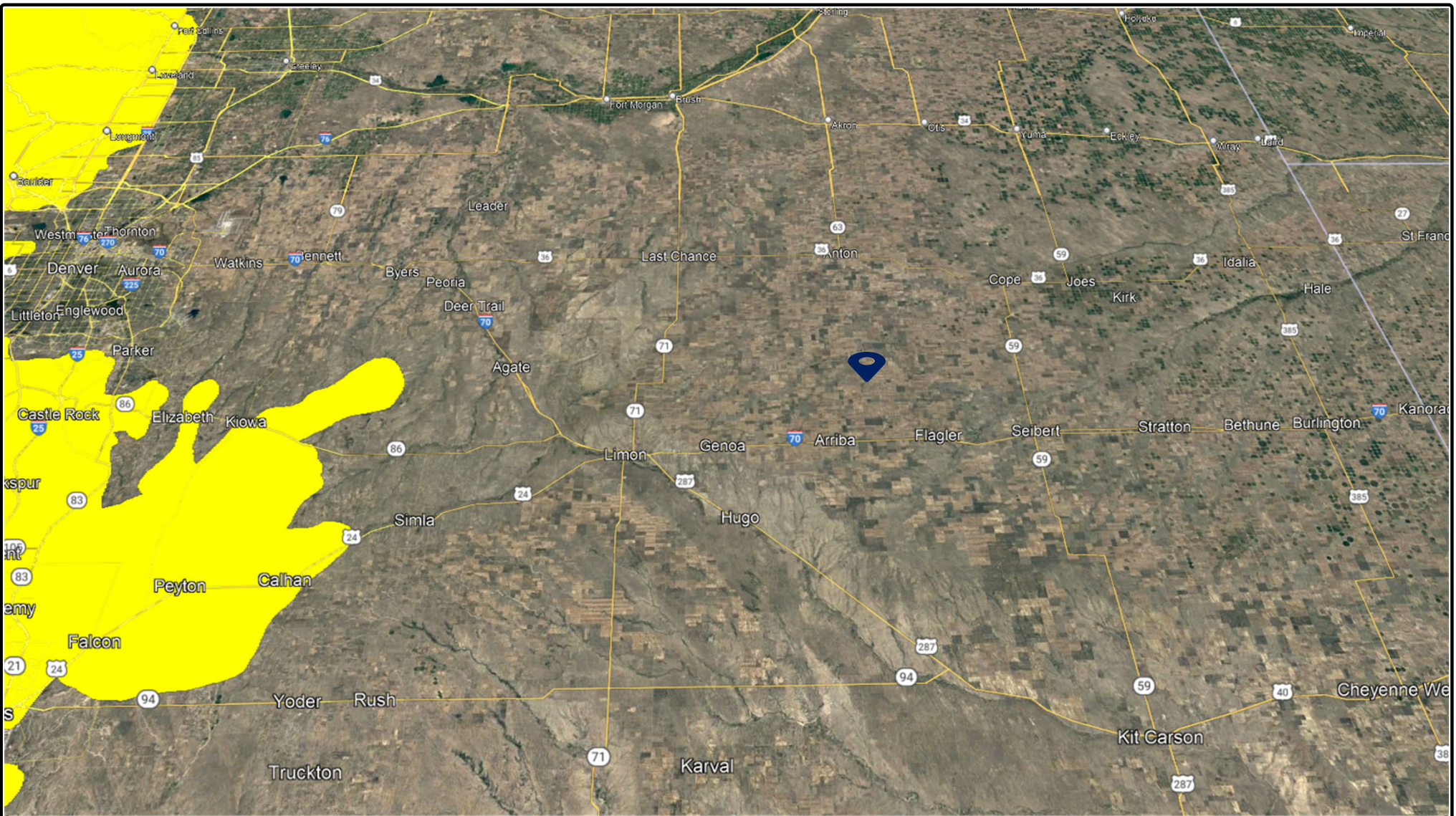
- LEGEND
- EXISTING WELL LOCATION
  - ID DESIGNATION
  - WORKING PAD SURFACE
  - AREA OF DISTURBANCE
  - HIGH PRIORITY HABITAT
  - ACCESS ROAD
  - PROPOSED FLOWLINE CORRIDOR

NOTE:  
THIS MAP IS A COMPILATION OF PUBLICLY AVAILABLE DATA. THE ACCURACY AND COMPLETENESS OF SAID DATA HAD NOT BEEN VERIFIED BY LAT40, INC. EXISTING CONDITIONS MAY DIFFER FROM WHAT IS SHOWN.

DATA SOURCE: COGCC, USFWS, ECOS, CPW



DATE: 9/26/2022  
PROJECT#: 2022226



**Marquis #1**  
**Great Plains Energy Operating, LLC**  
**SWNW S23 T7S R52W**  
**Black Bear Habitat Map**

**Legend**



Black Bear Habitat



Marquis #1 Location



Prepared By:  
Ardor Environmental LLC

October 4, 2022