

Genesis Gas & Oil Colorado LLC  
Calamity Ridge 14-31  
Location ID: 423560



**Debris. Unused equipment.**



**Debris**

Genesis Gas & Oil Colorado LLC  
Calamity Ridge 14-31  
Location ID: 423560



**Debris**



**Debris. No containment. Leaking container.**

Genesis Gas & Oil Colorado LLC  
Calamity Ridge 14-31  
Location ID: 423560



**Stained soil.**



**Debris**

**Genesis Gas & Oil Colorado LLC**  
**Calamity Ridge 14-31**  
**Location ID: 423560**



**Unused equipment**



**Unused equipment**

Genesis Gas & Oil Colorado LLC  
Calamity Ridge 14-31  
Location ID: 423560



**Unmarked anchor**



**Open to wildlife**

Genesis Gas & Oil Colorado LLC  
Calamity Ridge 14-31  
Location ID: 423560



**Debris**



**Debris. Oily waste.**

Genesis Gas & Oil Colorado LLC  
Calamity Ridge 14-31  
Location ID: 423560



**Belt guard missing creating human and wildlife hazard**



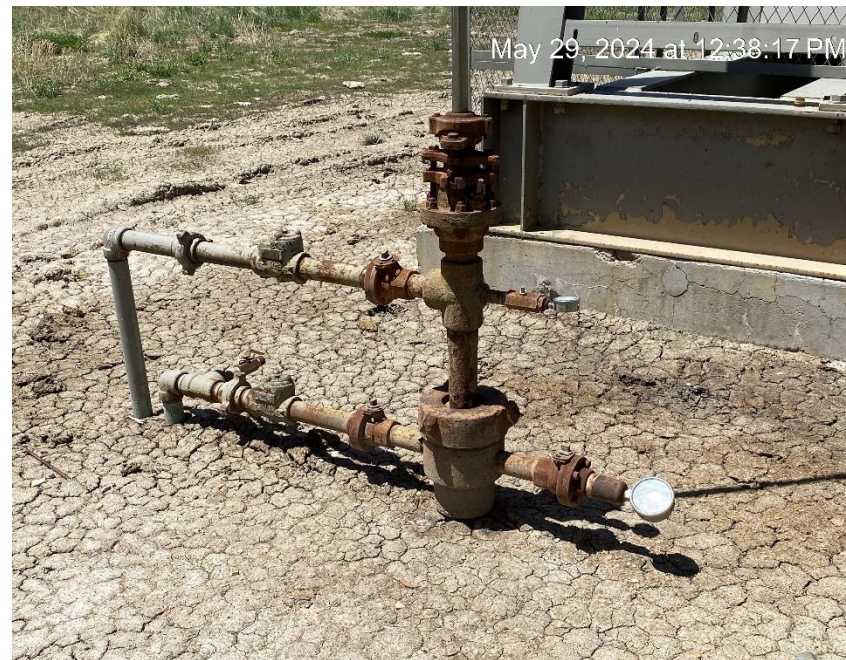
**Well sign missing required information**



**Genesis Gas & Oil Colorado LLC**  
**Calamity Ridge 14-31**  
**Location ID: 423560**



**Unused equipment**

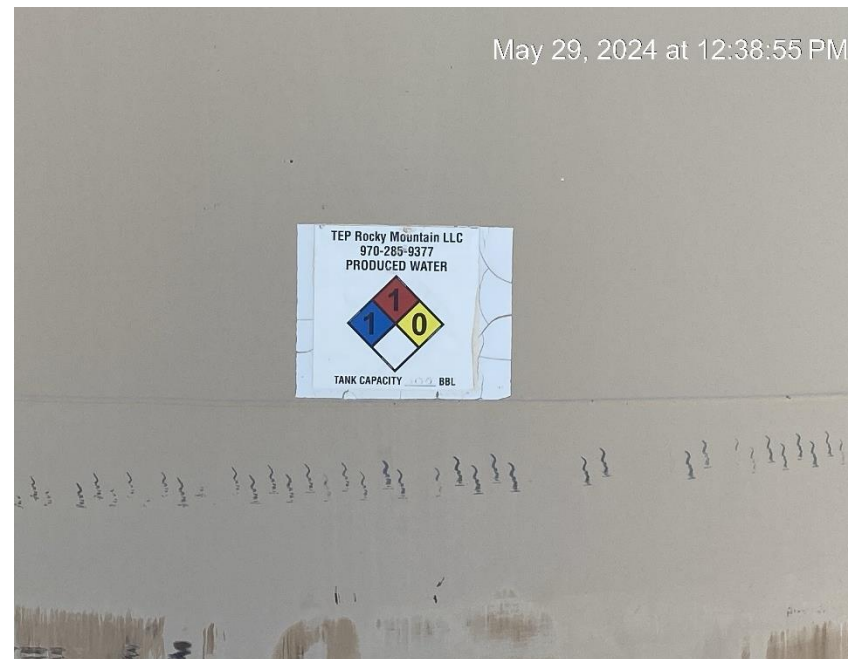


**No Bradenhead access**

Genesis Gas & Oil Colorado LLC  
Calamity Ridge 14-31  
Location ID: 423560



**Containment undersize**



**Missing required information**

Genesis Gas & Oil Colorado LLC  
Calamity Ridge 14-31  
Location ID: 423560

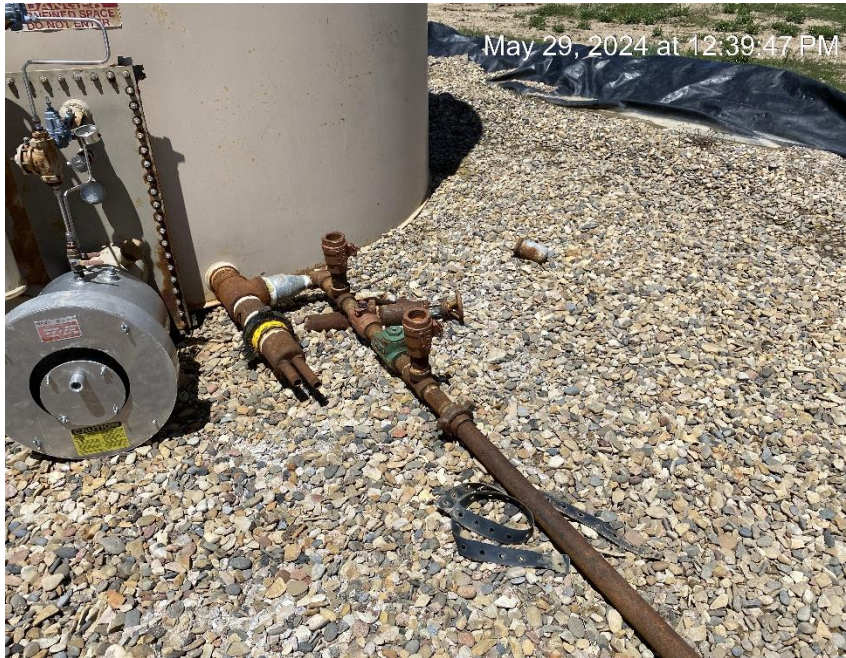


**Open end load line**



**Debris**

Genesis Gas & Oil Colorado LLC  
Calamity Ridge 14-31  
Location ID: 423560



Debris



Debris

Genesis Gas & Oil Colorado LLC  
Calamity Ridge 14-31  
Location ID: 423560



Open to wildlife

**PARAGON**  
AUTOMATION  
INSTRUMENTATION AND CONTROLS  
(435) 781-2128

Station Name Calamity Ridge Unit 14-31 Meter # 14-31  
 Producer Genesis Gas & Oil Purchaser Williams  
 Lease # LOC-65645 County Rio Blanco St CO  
 Stat. Range 0-200 ☐ PSIA ☒ PSIG  
 Dft. Range 0-400 Temp. Range 0-150  
 Temp. Base 60 Press. Base 14.73  
 Atmos. Press. 11.46 SP TAP ☒ Upstream ☐ Downstream  
 Run Size 2.067  
 Elevation 6727 Fitting: ☐ St. ☒ Simplex ☐ Flange

**METER INFO**  
 Meter Make Weatherford K500 Sensor S/N MJ 10080219  
 Meter S/N KR1008009 Sensor Limits: LOW HIGH  
 Meter Run Make Druck SP 0 1500  
 S/N 08310141 DP 0 1000  
08900678-002 Temp -20 200

ORIFICE PLATE			METER TEST		GAS ANALYSIS		
DATE	SIZE	INSPTD BY	DATE	TESTED BY	DATE	SPEC GRAVITY	ANALYSD BY
2/14/20	.500	5/1/20	2/14/20	5/1/20	2/14/20	.6405	5/1/20
4/5/20	.500	5/1/20	4/5/20	5/1/20	4/5/20	.6405	5/1/20
8/29/22	.500	5/1/20	8/29/22	5/1/20	8/29/22	.6405	5/1/20
11/21/22	.500	5/1/20	11/21/22	5/1/20	11/21/22	.6302	5/1/20

Calibration overdue

Genesis Gas & Oil Colorado LLC  
Calamity Ridge 14-31  
Location ID: 423560



**Unmarked anchor**



**Debris**

Genesis Gas & Oil Colorado LLC  
Calamity Ridge 14-31  
Location ID: 423560



Debris



Incomplete sign for tank battery of wellhead

**Genesis Gas & Oil Colorado LLC**  
**Calamity Ridge 14-31**  
**Location ID: 423560**



**Location from Southeast corner**

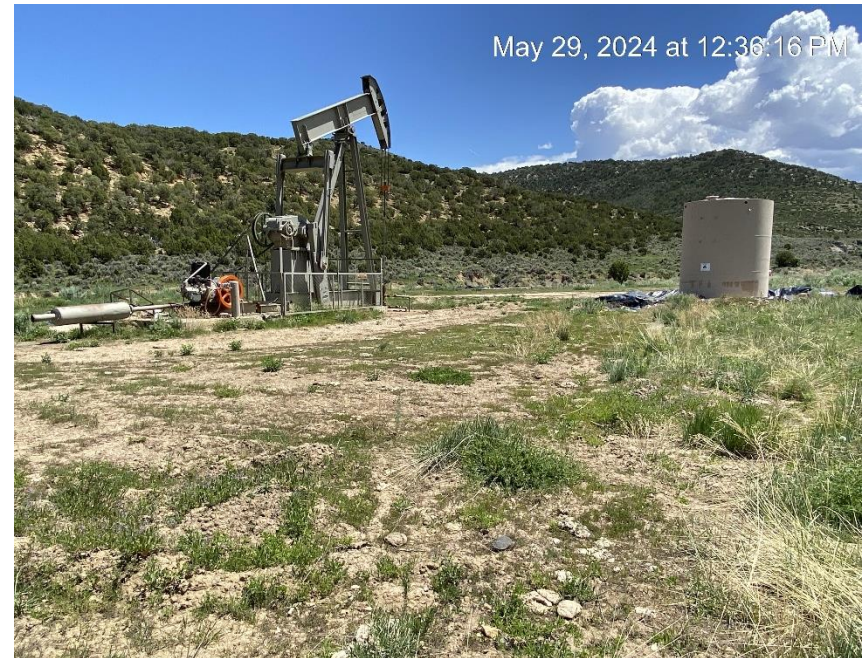


**Location from Northeast corner**

**Genesis Gas & Oil Colorado LLC**  
**Calamity Ridge 14-31**  
**Location ID: 423560**



**Location from Northwest corner**



**Location from Southwest corner**