

CRESTONE PEAK RESOURCES

ADAMS COUNTY

SEC 21-T3S-R65W

BIJOU 3-65 20-19-24 1AH

OWB

Plan: PROPOSAL 1

Standard Planning Report

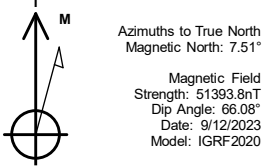
19 September, 2023

PROJECT DETAILS: ADAMS COUNTY

Geodetic System: US State Plane 1983
Datum: North American Datum 1983
Ellipsoid: GRS 1980
Zone: Colorado Northern Zone

System Datum: Mean Sea Level

Project: ADAMS COUNTY
Site: SEC 21-T3S-R65W
Well: BIJOU 3-65 20-19-24 1AH
Wellbore: OWB
Design: PROPOSAL 1



WELL DETAILS: BIJOU 3-65 20-19-24 1AH

				5593.00			
+N/-S	+E/-W	Northing	Easting	Latitude	Longitude		Slot
0.00	0.00	1162622.98	3233383.29	39.776769°N	104.669651°W		

SECTION DETAILS

Sec	MD	Inc	Azi	TVD	+N/-S	+E/-W	Dleg	TFace	VSec	Target
1	0.00	0.00	0.00	0.00	0.00	0.00	0.00	0.00	0.00	
2	100.00	0.00	0.00	100.00	0.00	0.00	0.00	0.00	0.00	
3	1255.01	23.10	314.94	1223.97	162.25	-162.60	2.00	314.94	180.83	
4	7872.71	23.10	314.94	7311.07	1996.18	-2000.53	0.00	0.00	2224.78	
5	8611.04	90.00	270.15	7707.00	2116.56	-2550.52	10.00	-47.18	2785.22	LP-BIJOU 3-65 20-19-24 1AH
6	23966.20	90.00	270.15	7707.00	2155.65	-17905.63	0.00	0.00	18034.92	PBHL-BIJOU 3-65 20-19-24 1AH

ANNOTATIONS

MD	Inc	Azi	TVD	+N/-S	+E/-W	VSec	Departure	Annotation
100.00	0.00	0.00	100.00	0.00	0.00	0.00	0.00	Start Build 2.00
1255.01	23.10	314.94	1223.97	162.25	-162.60	180.83	229.70	Start 6617.70 hold at 1255.01 MD
7872.71	23.10	314.94	7311.07	1996.18	-2000.53	2224.78	2826.10	Start DLS 10.00 TFO -47.18
8611.04	90.00	270.15	7707.00	2116.56	-2550.52	2785.22	3398.33	Start 15355.15 hold at 8611.04 MD
23966.20	90.00	270.15	7707.00	2155.65	-17905.63	18034.92	18753.48	TD at 23966.20

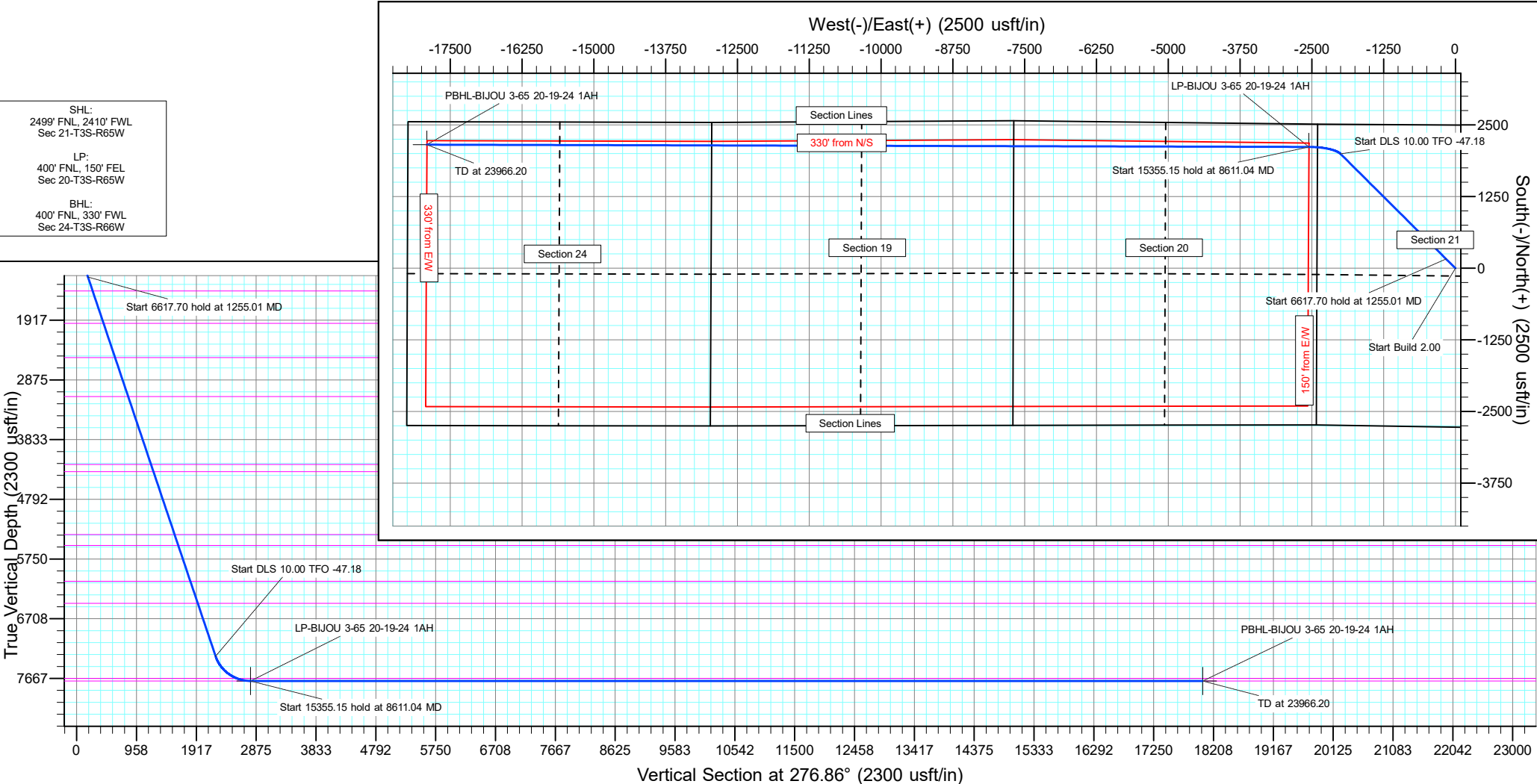
DESIGN TARGET DETAILS

Name	TVD	+N/-S	+E/-W	Northing	Easting	Latitude	Longitude	Shape
LP-BIJOU 3-65 20-19-24 1AH	7707.00	2116.56	-2550.52	1164715.55	3230813.08	39.782579°N	104.678726°W	Point
- plan hits target center								
PBHL-BIJOU 3-65 20-19-24 1AH	7707.00	2155.65	-17905.63	1164610.85	3215458.43	39.782669°N	104.733361°W	Point
- plan hits target center								

SHL:
2499' FNL, 2410' FWL
Sec 21-T3S-R65W

LP:
400' FNL, 150' FEL
Sec 20-T3S-R65W

BHL:
400' FNL, 330' FWL
Sec 24-T3S-R66W



Civitas Resources

Planning Report

Database:	EDM	Local Co-ordinate Reference:	Well BIJOU 3-65 20-19-24 1AH
Company:	CRESTONE PEAK RESOURCES	TVD Reference:	KB 25' @ 5618.00usft
Project:	ADAMS COUNTY	MD Reference:	KB 25' @ 5618.00usft
Site:	SEC 21-T3S-R65W	North Reference:	True
Well:	BIJOU 3-65 20-19-24 1AH	Survey Calculation Method:	Minimum Curvature
Wellbore:	OWB		
Design:	PROPOSAL 1		

Project	ADAMS COUNTY		
Map System:	US State Plane 1983	System Datum:	Mean Sea Level
Geo Datum:	North American Datum 1983		
Map Zone:	Colorado Northern Zone		Using geodetic scale factor

Site		SEC 21-T3S-R65W			
Site Position:		Northing:	1,165,129.40 usft	Latitude:	39.783575°N
From:	Lat/Long	Easting:	3,236,258.06 usft	Longitude:	104.659339°W
Position Uncertainty:	0.00 usft	Slot Radius:	13.200 in	Grid Convergence:	0.54 °

Well	BIJOU 3-65 20-19-24 1AH					
Well Position	+N/-S	-2,479.08 usft	Northing:	1,162,622.98 usft	Latitude:	39.776769°N
	+E/-W	-2,898.43 usft	Easting:	3,233,383.29 usft	Longitude:	104.669651°W
Position Uncertainty		0.00 usft	Wellhead Elevation:		Ground Level:	5,593.00 usft

Wellbore	OWB				
Magnetics	Model Name	Sample Date	Declination (°)	Dip Angle (°)	Field Strength (nT)
	IGRF2020	9/12/2023	7.51	66.08	51,393.80496029

Design	PROPOSAL 1			
Audit Notes:				
Version:	Phase:	PROTOTYPE	Tie On Depth:	0.00
Vertical Section:	Depth From (TVD) (usft)	+N/-S (usft)	+E/-W (usft)	Direction (°)
	0.00	0.00	0.00	276.86

Plan Survey Tool Program	Date	9/19/2023		
Depth From (usft)	Depth To (usft)	Survey (Wellbore)	Tool Name	Remarks
1	0.00	23,966.20	PROPOSAL 1 (OWB)	MWD OWSG
				OWSG MWD - Standard

Plan Sections										
Measured Depth (usft)	Inclination (°)	Azimuth (°)	Vertical Depth (usft)	+N/-S (usft)	+E/-W (usft)	Dogleg Rate (°/100ft)	Build Rate (°/100ft)	Turn Rate (°/100ft)	TFO (°)	Target
0.00	0.00	0.00	0.00	0.00	0.00	0.00	0.00	0.00	0.00	
100.00	0.00	0.00	100.00	0.00	0.00	0.00	0.00	0.00	0.00	
1,255.01	23.10	314.94	1,223.97	162.25	-162.60	2.00	2.00	0.00	314.94	
7,872.71	23.10	314.94	7,311.07	1,996.18	-2,000.53	0.00	0.00	0.00	0.00	
8,611.04	90.00	270.15	7,707.00	2,116.56	-2,550.52	10.00	9.06	-6.07	-47.18	LP-BIJOU 3-65 20-19
23,966.20	90.00	270.15	7,707.00	2,155.65	-17,905.63	0.00	0.00	0.00	0.00	PBHL-BIJOU 3-65 20

Civitas Resources

Planning Report

Database:	EDM	Local Co-ordinate Reference:	Well BIJOU 3-65 20-19-24 1AH
Company:	CRESTONE PEAK RESOURCES	TVD Reference:	KB 25' @ 5618.00usft
Project:	ADAMS COUNTY	MD Reference:	KB 25' @ 5618.00usft
Site:	SEC 21-T3S-R65W	North Reference:	True
Well:	BIJOU 3-65 20-19-24 1AH	Survey Calculation Method:	Minimum Curvature
Wellbore:	OWB		
Design:	PROPOSAL 1		

Planned Survey									
Measured Depth (usft)	Inclination (°)	Azimuth (°)	Vertical Depth (usft)	+N/-S (usft)	+E/-W (usft)	Vertical Section (usft)	Dogleg Rate (°/100ft)	Build Rate (°/100ft)	Turn Rate (°/100ft)
0.00	0.00	0.00	0.00	0.00	0.00	0.00	0.00	0.00	0.00
24.00	0.00	0.00	24.00	0.00	0.00	0.00	0.00	0.00	0.00
Denver									
100.00	0.00	0.00	100.00	0.00	0.00	0.00	0.00	0.00	0.00
Start Build 2.00									
200.00	2.00	314.94	199.98	1.23	-1.24	1.37	2.00	2.00	0.00
300.00	4.00	314.94	299.84	4.93	-4.94	5.49	2.00	2.00	0.00
400.00	6.00	314.94	399.45	11.08	-11.11	12.35	2.00	2.00	0.00
500.00	8.00	314.94	498.70	19.69	-19.74	21.95	2.00	2.00	0.00
600.00	10.00	314.94	597.47	30.74	-30.81	34.26	2.00	2.00	0.00
700.00	12.00	314.94	695.62	44.22	-44.31	49.28	2.00	2.00	0.00
800.00	14.00	314.94	793.06	60.11	-60.24	66.99	2.00	2.00	0.00
824.70	14.49	314.94	817.00	64.40	-64.54	71.78	2.00	2.00	0.00
Arapahoe									
900.00	16.00	314.94	889.64	78.39	-78.56	87.36	2.00	2.00	0.00
1,000.00	18.00	314.94	985.27	99.04	-99.25	110.38	2.00	2.00	0.00
1,100.00	20.00	314.94	1,079.82	122.03	-122.30	136.01	2.00	2.00	0.00
1,200.00	22.00	314.94	1,173.17	147.34	-147.67	164.22	2.00	2.00	0.00
1,255.01	23.10	314.94	1,223.97	162.25	-162.60	180.83	2.00	2.00	0.00
Start 6617.70 hold at 1255.01 MD									
1,300.00	23.10	314.94	1,265.35	174.71	-175.09	194.72	0.00	0.00	0.00
1,400.00	23.10	314.94	1,357.34	202.43	-202.87	225.61	0.00	0.00	0.00
1,497.48	23.10	314.94	1,447.00	229.44	-229.94	255.71	0.00	0.00	0.00
Laramie-Fox Hills Formation									
1,500.00	23.10	314.94	1,449.32	230.14	-230.64	256.49	0.00	0.00	0.00
1,600.00	23.10	314.94	1,541.30	257.85	-258.41	287.38	0.00	0.00	0.00
1,700.00	23.10	314.94	1,633.28	285.56	-286.19	318.27	0.00	0.00	0.00
1,800.00	23.10	314.94	1,725.26	313.28	-313.96	349.15	0.00	0.00	0.00
1,900.00	23.10	314.94	1,817.25	340.99	-341.73	380.04	0.00	0.00	0.00
2,000.00	23.10	314.94	1,909.23	368.70	-369.50	410.92	0.00	0.00	0.00
2,062.81	23.10	314.94	1,967.00	386.11	-386.95	430.32	0.00	0.00	0.00
Pierre Formation									
2,100.00	23.10	314.94	2,001.21	396.41	-397.28	441.81	0.00	0.00	0.00
2,200.00	23.10	314.94	2,093.19	424.13	-425.05	472.70	0.00	0.00	0.00
2,300.00	23.10	314.94	2,185.17	451.84	-452.82	503.58	0.00	0.00	0.00
2,400.00	23.10	314.94	2,277.16	479.55	-480.60	534.47	0.00	0.00	0.00
2,500.00	23.10	314.94	2,369.14	507.26	-508.37	565.36	0.00	0.00	0.00
2,600.00	23.10	314.94	2,461.12	534.98	-536.14	596.24	0.00	0.00	0.00
2,660.75	23.10	314.94	2,517.00	551.81	-553.01	615.00	0.00	0.00	0.00
Upper Pierre aquifer									
2,700.00	23.10	314.94	2,553.10	562.69	-563.91	627.13	0.00	0.00	0.00
2,800.00	23.10	314.94	2,645.08	590.40	-591.69	658.01	0.00	0.00	0.00
2,900.00	23.10	314.94	2,737.07	618.11	-619.46	688.90	0.00	0.00	0.00
3,000.00	23.10	314.94	2,829.05	645.83	-647.23	719.79	0.00	0.00	0.00
3,100.00	23.10	314.94	2,921.03	673.54	-675.01	750.67	0.00	0.00	0.00
3,200.00	23.10	314.94	3,013.01	701.25	-702.78	781.56	0.00	0.00	0.00
3,300.00	23.10	314.94	3,104.99	728.96	-730.55	812.44	0.00	0.00	0.00
3,340.23	23.10	314.94	3,142.00	740.11	-741.73	824.87	0.00	0.00	0.00
Base of Upper Pierre aquifer									
3,400.00	23.10	314.94	3,196.98	756.68	-758.32	843.33	0.00	0.00	0.00
3,500.00	23.10	314.94	3,288.96	784.39	-786.10	874.22	0.00	0.00	0.00
3,600.00	23.10	314.94	3,380.94	812.10	-813.87	905.10	0.00	0.00	0.00
3,700.00	23.10	314.94	3,472.92	839.81	-841.64	935.99	0.00	0.00	0.00

Civitas Resources

Planning Report

Database:	EDM	Local Co-ordinate Reference:	Well BIJOU 3-65 20-19-24 1AH
Company:	CRESTONE PEAK RESOURCES	TVD Reference:	KB 25' @ 5618.00usft
Project:	ADAMS COUNTY	MD Reference:	KB 25' @ 5618.00usft
Site:	SEC 21-T3S-R65W	North Reference:	True
Well:	BIJOU 3-65 20-19-24 1AH	Survey Calculation Method:	Minimum Curvature
Wellbore:	OWB		
Design:	PROPOSAL 1		

Planned Survey										
Measured Depth (usft)	Inclination (°)	Azimuth (°)	Vertical Depth (usft)	+N/-S (usft)	+E/-W (usft)	Vertical Section (usft)	Dogleg Rate (°/100ft)	Build Rate (°/100ft)	Turn Rate (°/100ft)	
3,800.00	23.10	314.94	3,564.90	867.53	-869.42	966.88	0.00	0.00	0.00	
3,900.00	23.10	314.94	3,656.89	895.24	-897.19	997.76	0.00	0.00	0.00	
4,000.00	23.10	314.94	3,748.87	922.95	-924.96	1,028.65	0.00	0.00	0.00	
4,100.00	23.10	314.94	3,840.85	950.66	-952.74	1,059.53	0.00	0.00	0.00	
4,200.00	23.10	314.94	3,932.83	978.38	-980.51	1,090.42	0.00	0.00	0.00	
4,300.00	23.10	314.94	4,024.81	1,006.09	-1,008.28	1,121.31	0.00	0.00	0.00	
4,400.00	23.10	314.94	4,116.80	1,033.80	-1,036.05	1,152.19	0.00	0.00	0.00	
4,500.00	23.10	314.94	4,208.78	1,061.51	-1,063.83	1,183.08	0.00	0.00	0.00	
4,525.25	23.10	314.94	4,232.00	1,068.51	-1,070.84	1,190.88	0.00	0.00	0.00	
Larimer ("Parkman") sandstone										
4,600.00	23.10	314.94	4,300.76	1,089.23	-1,091.60	1,213.97	0.00	0.00	0.00	
4,650.27	23.10	314.94	4,347.00	1,103.16	-1,105.56	1,229.49	0.00	0.00	0.00	
Pierre Formation										
4,700.00	23.10	314.94	4,392.74	1,116.94	-1,119.37	1,244.85	0.00	0.00	0.00	
4,800.00	23.10	314.94	4,484.72	1,144.65	-1,147.15	1,275.74	0.00	0.00	0.00	
4,900.00	23.10	314.94	4,576.71	1,172.36	-1,174.92	1,306.62	0.00	0.00	0.00	
5,000.00	23.10	314.94	4,668.69	1,200.08	-1,202.69	1,337.51	0.00	0.00	0.00	
5,100.00	23.10	314.94	4,760.67	1,227.79	-1,230.46	1,368.40	0.00	0.00	0.00	
5,200.00	23.10	314.94	4,852.65	1,255.50	-1,258.24	1,399.28	0.00	0.00	0.00	
5,300.00	23.10	314.94	4,944.63	1,283.21	-1,286.01	1,430.17	0.00	0.00	0.00	
5,400.00	23.10	314.94	5,036.62	1,310.93	-1,313.78	1,461.05	0.00	0.00	0.00	
5,500.00	23.10	314.94	5,128.60	1,338.64	-1,341.56	1,491.94	0.00	0.00	0.00	
5,600.00	23.10	314.94	5,220.58	1,366.35	-1,369.33	1,522.83	0.00	0.00	0.00	
5,700.00	23.10	314.94	5,312.56	1,394.06	-1,397.10	1,553.71	0.00	0.00	0.00	
5,748.31	23.10	314.94	5,357.00	1,407.45	-1,410.52	1,568.64	0.00	0.00	0.00	
Terry ("Sussex") sandstone										
5,800.00	23.10	314.94	5,404.54	1,421.78	-1,424.87	1,584.60	0.00	0.00	0.00	
5,900.00	23.10	314.94	5,496.53	1,449.49	-1,452.65	1,615.49	0.00	0.00	0.00	
5,938.57	23.10	314.94	5,532.00	1,460.18	-1,463.36	1,627.40	0.00	0.00	0.00	
Pierre Formation										
6,000.00	23.10	314.94	5,588.51	1,477.20	-1,480.42	1,646.37	0.00	0.00	0.00	
6,100.00	23.10	314.94	5,680.49	1,504.91	-1,508.19	1,677.26	0.00	0.00	0.00	
6,200.00	23.10	314.94	5,772.47	1,532.63	-1,535.97	1,708.14	0.00	0.00	0.00	
6,300.00	23.10	314.94	5,864.45	1,560.34	-1,563.74	1,739.03	0.00	0.00	0.00	
6,400.00	23.10	314.94	5,956.44	1,588.05	-1,591.51	1,769.92	0.00	0.00	0.00	
6,500.00	23.10	314.94	6,048.42	1,615.76	-1,619.29	1,800.80	0.00	0.00	0.00	
6,563.69	23.10	314.94	6,107.00	1,633.41	-1,636.97	1,820.47	0.00	0.00	0.00	
Hygiene ("Shannon") sandstone										
6,600.00	23.10	314.94	6,140.40	1,643.48	-1,647.06	1,831.69	0.00	0.00	0.00	
6,700.00	23.10	314.94	6,232.38	1,671.19	-1,674.83	1,862.58	0.00	0.00	0.00	
6,800.00	23.10	314.94	6,324.36	1,698.90	-1,702.60	1,893.46	0.00	0.00	0.00	
6,900.00	23.10	314.94	6,416.34	1,726.61	-1,730.38	1,924.35	0.00	0.00	0.00	
6,949.64	23.10	314.94	6,462.00	1,740.37	-1,744.16	1,939.68	0.00	0.00	0.00	
Pierre Formation										
7,000.00	23.10	314.94	6,508.33	1,754.33	-1,758.15	1,955.23	0.00	0.00	0.00	
7,100.00	23.10	314.94	6,600.31	1,782.04	-1,785.92	1,986.12	0.00	0.00	0.00	
7,200.00	23.10	314.94	6,692.29	1,809.75	-1,813.70	2,017.01	0.00	0.00	0.00	
7,300.00	23.10	314.94	6,784.27	1,837.46	-1,841.47	2,047.89	0.00	0.00	0.00	
7,400.00	23.10	314.94	6,876.25	1,865.18	-1,869.24	2,078.78	0.00	0.00	0.00	
7,500.00	23.10	314.94	6,968.24	1,892.89	-1,897.01	2,109.66	0.00	0.00	0.00	
7,600.00	23.10	314.94	7,060.22	1,920.60	-1,924.79	2,140.55	0.00	0.00	0.00	
7,700.00	23.10	314.94	7,152.20	1,948.31	-1,952.56	2,171.44	0.00	0.00	0.00	
7,800.00	23.10	314.94	7,244.18	1,976.03	-1,980.33	2,202.32	0.00	0.00	0.00	

Civitas Resources

Planning Report

Database:	EDM	Local Co-ordinate Reference:	Well BIJOU 3-65 20-19-24 1AH
Company:	CRESTONE PEAK RESOURCES	TVD Reference:	KB 25' @ 5618.00usft
Project:	ADAMS COUNTY	MD Reference:	KB 25' @ 5618.00usft
Site:	SEC 21-T3S-R65W	North Reference:	True
Well:	BIJOU 3-65 20-19-24 1AH	Survey Calculation Method:	Minimum Curvature
Wellbore:	OWB		
Design:	PROPOSAL 1		

Planned Survey									
Measured Depth (usft)	Inclination (°)	Azimuth (°)	Vertical Depth (usft)	+N/-S (usft)	+E/-W (usft)	Vertical Section (usft)	Dogleg Rate (°/100ft)	Build Rate (°/100ft)	Turn Rate (°/100ft)
7,872.71	23.10	314.94	7,311.07	1,996.18	-2,000.53	2,224.78	0.00	0.00	0.00
Start DLS 10.00 TFO -47.18									
7,900.00	25.03	310.20	7,335.98	2,003.68	-2,008.73	2,233.82	10.00	7.07	-17.35
7,950.00	28.88	303.15	7,380.55	2,017.13	-2,026.93	2,253.50	10.00	7.71	-14.10
8,000.00	33.02	297.69	7,423.43	2,030.07	-2,049.12	2,277.07	10.00	8.28	-10.94
8,050.00	37.35	293.33	7,464.29	2,042.41	-2,075.12	2,304.37	10.00	8.66	-8.70
8,100.00	41.81	289.78	7,502.82	2,054.07	-2,104.75	2,335.18	10.00	8.92	-7.11
8,150.00	46.36	286.80	7,538.73	2,064.94	-2,137.78	2,369.27	10.00	9.10	-5.96
8,200.00	50.98	284.24	7,571.75	2,074.96	-2,173.95	2,406.37	10.00	9.23	-5.11
8,250.00	55.64	282.00	7,601.62	2,084.03	-2,212.98	2,446.22	10.00	9.33	-4.48
8,300.00	60.35	280.00	7,628.11	2,092.10	-2,254.59	2,488.49	10.00	9.41	-4.01
8,350.00	65.08	278.17	7,651.03	2,099.10	-2,298.46	2,532.88	10.00	9.46	-3.65
8,390.92	68.96	276.78	7,667.00	2,103.99	-2,335.81	2,570.54	10.00	9.50	-3.40
Sharon Springs Member									
8,400.00	69.83	276.48	7,670.20	2,104.97	-2,344.25	2,579.04	10.00	9.52	-3.28
8,450.00	74.59	274.90	7,685.47	2,109.68	-2,391.61	2,626.62	10.00	9.53	-3.18
8,500.00	79.37	273.38	7,696.73	2,113.19	-2,440.18	2,675.27	10.00	9.55	-3.03
8,550.00	84.15	271.91	7,703.89	2,115.47	-2,489.60	2,724.60	10.00	9.57	-2.94
8,600.00	88.94	270.46	7,706.90	2,116.50	-2,539.48	2,774.25	10.00	9.58	-2.89
8,611.04	90.00	270.15	7,707.00	2,116.56	-2,550.52	2,785.22	10.00	9.58	-2.88
Start 15355.15 hold at 8611.04 MD - Niobrara Formation									
8,700.00	90.00	270.15	7,707.00	2,116.79	-2,639.48	2,873.57	0.00	0.00	0.00
8,800.00	90.00	270.15	7,707.00	2,117.04	-2,739.48	2,972.88	0.00	0.00	0.00
8,900.00	90.00	270.15	7,707.00	2,117.30	-2,839.48	3,072.19	0.00	0.00	0.00
9,000.00	90.00	270.15	7,707.00	2,117.55	-2,939.48	3,171.51	0.00	0.00	0.00
9,100.00	90.00	270.15	7,707.00	2,117.80	-3,039.48	3,270.82	0.00	0.00	0.00
9,200.00	90.00	270.15	7,707.00	2,118.06	-3,139.48	3,370.13	0.00	0.00	0.00
9,300.00	90.00	270.15	7,707.00	2,118.31	-3,239.48	3,469.45	0.00	0.00	0.00
9,400.00	90.00	270.15	7,707.00	2,118.57	-3,339.48	3,568.76	0.00	0.00	0.00
9,500.00	90.00	270.15	7,707.00	2,118.82	-3,439.48	3,668.07	0.00	0.00	0.00
9,600.00	90.00	270.15	7,707.00	2,119.08	-3,539.48	3,767.39	0.00	0.00	0.00
9,700.00	90.00	270.15	7,707.00	2,119.33	-3,639.47	3,866.70	0.00	0.00	0.00
9,800.00	90.00	270.15	7,707.00	2,119.59	-3,739.47	3,966.01	0.00	0.00	0.00
9,900.00	90.00	270.15	7,707.00	2,119.84	-3,839.47	4,065.33	0.00	0.00	0.00
10,000.00	90.00	270.15	7,707.00	2,120.10	-3,939.47	4,164.64	0.00	0.00	0.00
10,100.00	90.00	270.15	7,707.00	2,120.35	-4,039.47	4,263.95	0.00	0.00	0.00
10,200.00	90.00	270.15	7,707.00	2,120.60	-4,139.47	4,363.27	0.00	0.00	0.00
10,300.00	90.00	270.15	7,707.00	2,120.86	-4,239.47	4,462.58	0.00	0.00	0.00
10,400.00	90.00	270.15	7,707.00	2,121.11	-4,339.47	4,561.89	0.00	0.00	0.00
10,500.00	90.00	270.15	7,707.00	2,121.37	-4,439.47	4,661.21	0.00	0.00	0.00
10,600.00	90.00	270.15	7,707.00	2,121.62	-4,539.47	4,760.52	0.00	0.00	0.00
10,700.00	90.00	270.15	7,707.00	2,121.88	-4,639.47	4,859.83	0.00	0.00	0.00
10,800.00	90.00	270.15	7,707.00	2,122.13	-4,739.47	4,959.14	0.00	0.00	0.00
10,900.00	90.00	270.15	7,707.00	2,122.39	-4,839.47	5,058.46	0.00	0.00	0.00
11,000.00	90.00	270.15	7,707.00	2,122.64	-4,939.47	5,157.77	0.00	0.00	0.00
11,100.00	90.00	270.15	7,707.00	2,122.90	-5,039.47	5,257.08	0.00	0.00	0.00
11,200.00	90.00	270.15	7,707.00	2,123.15	-5,139.47	5,356.40	0.00	0.00	0.00
11,300.00	90.00	270.15	7,707.00	2,123.40	-5,239.47	5,455.71	0.00	0.00	0.00
11,400.00	90.00	270.15	7,707.00	2,123.66	-5,339.47	5,555.02	0.00	0.00	0.00
11,500.00	90.00	270.15	7,707.00	2,123.91	-5,439.47	5,654.34	0.00	0.00	0.00
11,600.00	90.00	270.15	7,707.00	2,124.17	-5,539.47	5,753.65	0.00	0.00	0.00
11,700.00	90.00	270.15	7,707.00	2,124.42	-5,639.47	5,852.96	0.00	0.00	0.00
11,800.00	90.00	270.15	7,707.00	2,124.68	-5,739.47	5,952.28	0.00	0.00	0.00

Civitas Resources

Planning Report

Database:	EDM	Local Co-ordinate Reference:	Well BIJOU 3-65 20-19-24 1AH
Company:	CRESTONE PEAK RESOURCES	TVD Reference:	KB 25' @ 5618.00usft
Project:	ADAMS COUNTY	MD Reference:	KB 25' @ 5618.00usft
Site:	SEC 21-T3S-R65W	North Reference:	True
Well:	BIJOU 3-65 20-19-24 1AH	Survey Calculation Method:	Minimum Curvature
Wellbore:	OWB		
Design:	PROPOSAL 1		

Planned Survey										
Measured Depth (usft)	Inclination (°)	Azimuth (°)	Vertical Depth (usft)	+N/-S (usft)	+E/-W (usft)	Vertical Section (usft)	Dogleg Rate (°/100ft)	Build Rate (°/100ft)	Turn Rate (°/100ft)	
11,900.00	90.00	270.15	7,707.00	2,124.93	-5,839.47	6,051.59	0.00	0.00	0.00	
12,000.00	90.00	270.15	7,707.00	2,125.19	-5,939.47	6,150.90	0.00	0.00	0.00	
12,100.00	90.00	270.15	7,707.00	2,125.44	-6,039.47	6,250.22	0.00	0.00	0.00	
12,200.00	90.00	270.15	7,707.00	2,125.70	-6,139.47	6,349.53	0.00	0.00	0.00	
12,300.00	90.00	270.15	7,707.00	2,125.95	-6,239.47	6,448.84	0.00	0.00	0.00	
12,400.00	90.00	270.15	7,707.00	2,126.20	-6,339.47	6,548.16	0.00	0.00	0.00	
12,500.00	90.00	270.15	7,707.00	2,126.46	-6,439.47	6,647.47	0.00	0.00	0.00	
12,600.00	90.00	270.15	7,707.00	2,126.71	-6,539.47	6,746.78	0.00	0.00	0.00	
12,700.00	90.00	270.15	7,707.00	2,126.97	-6,639.47	6,846.10	0.00	0.00	0.00	
12,800.00	90.00	270.15	7,707.00	2,127.22	-6,739.46	6,945.41	0.00	0.00	0.00	
12,900.00	90.00	270.15	7,707.00	2,127.48	-6,839.46	7,044.72	0.00	0.00	0.00	
13,000.00	90.00	270.15	7,707.00	2,127.73	-6,939.46	7,144.04	0.00	0.00	0.00	
13,100.00	90.00	270.15	7,707.00	2,127.99	-7,039.46	7,243.35	0.00	0.00	0.00	
13,200.00	90.00	270.15	7,707.00	2,128.24	-7,139.46	7,342.66	0.00	0.00	0.00	
13,300.00	90.00	270.15	7,707.00	2,128.50	-7,239.46	7,441.98	0.00	0.00	0.00	
13,400.00	90.00	270.15	7,707.00	2,128.75	-7,339.46	7,541.29	0.00	0.00	0.00	
13,500.00	90.00	270.15	7,707.00	2,129.00	-7,439.46	7,640.60	0.00	0.00	0.00	
13,600.00	90.00	270.15	7,707.00	2,129.26	-7,539.46	7,739.91	0.00	0.00	0.00	
13,700.00	90.00	270.15	7,707.00	2,129.51	-7,639.46	7,839.23	0.00	0.00	0.00	
13,800.00	90.00	270.15	7,707.00	2,129.77	-7,739.46	7,938.54	0.00	0.00	0.00	
13,900.00	90.00	270.15	7,707.00	2,130.02	-7,839.46	8,037.85	0.00	0.00	0.00	
14,000.00	90.00	270.15	7,707.00	2,130.28	-7,939.46	8,137.17	0.00	0.00	0.00	
14,100.00	90.00	270.15	7,707.00	2,130.53	-8,039.46	8,236.48	0.00	0.00	0.00	
14,200.00	90.00	270.15	7,707.00	2,130.79	-8,139.46	8,335.79	0.00	0.00	0.00	
14,300.00	90.00	270.15	7,707.00	2,131.04	-8,239.46	8,435.11	0.00	0.00	0.00	
14,400.00	90.00	270.15	7,707.00	2,131.30	-8,339.46	8,534.42	0.00	0.00	0.00	
14,500.00	90.00	270.15	7,707.00	2,131.55	-8,439.46	8,633.73	0.00	0.00	0.00	
14,600.00	90.00	270.15	7,707.00	2,131.80	-8,539.46	8,733.05	0.00	0.00	0.00	
14,700.00	90.00	270.15	7,707.00	2,132.06	-8,639.46	8,832.36	0.00	0.00	0.00	
14,800.00	90.00	270.15	7,707.00	2,132.31	-8,739.46	8,931.67	0.00	0.00	0.00	
14,900.00	90.00	270.15	7,707.00	2,132.57	-8,839.46	9,030.99	0.00	0.00	0.00	
15,000.00	90.00	270.15	7,707.00	2,132.82	-8,939.46	9,130.30	0.00	0.00	0.00	
15,100.00	90.00	270.15	7,707.00	2,133.08	-9,039.46	9,229.61	0.00	0.00	0.00	
15,200.00	90.00	270.15	7,707.00	2,133.33	-9,139.46	9,328.93	0.00	0.00	0.00	
15,300.00	90.00	270.15	7,707.00	2,133.59	-9,239.46	9,428.24	0.00	0.00	0.00	
15,400.00	90.00	270.15	7,707.00	2,133.84	-9,339.46	9,527.55	0.00	0.00	0.00	
15,500.00	90.00	270.15	7,707.00	2,134.10	-9,439.46	9,626.87	0.00	0.00	0.00	
15,600.00	90.00	270.15	7,707.00	2,134.35	-9,539.46	9,726.18	0.00	0.00	0.00	
15,700.00	90.00	270.15	7,707.00	2,134.60	-9,639.46	9,825.49	0.00	0.00	0.00	
15,800.00	90.00	270.15	7,707.00	2,134.86	-9,739.46	9,924.81	0.00	0.00	0.00	
15,900.00	90.00	270.15	7,707.00	2,135.11	-9,839.46	10,024.12	0.00	0.00	0.00	
16,000.00	90.00	270.15	7,707.00	2,135.37	-9,939.45	10,123.43	0.00	0.00	0.00	
16,100.00	90.00	270.15	7,707.00	2,135.62	-10,039.45	10,222.74	0.00	0.00	0.00	
16,200.00	90.00	270.15	7,707.00	2,135.88	-10,139.45	10,322.06	0.00	0.00	0.00	
16,300.00	90.00	270.15	7,707.00	2,136.13	-10,239.45	10,421.37	0.00	0.00	0.00	
16,400.00	90.00	270.15	7,707.00	2,136.39	-10,339.45	10,520.68	0.00	0.00	0.00	
16,500.00	90.00	270.15	7,707.00	2,136.64	-10,439.45	10,620.00	0.00	0.00	0.00	
16,600.00	90.00	270.15	7,707.00	2,136.90	-10,539.45	10,719.31	0.00	0.00	0.00	
16,700.00	90.00	270.15	7,707.00	2,137.15	-10,639.45	10,818.62	0.00	0.00	0.00	
16,800.00	90.00	270.15	7,707.00	2,137.40	-10,739.45	10,917.94	0.00	0.00	0.00	
16,900.00	90.00	270.15	7,707.00	2,137.66	-10,839.45	11,017.25	0.00	0.00	0.00	
17,000.00	90.00	270.15	7,707.00	2,137.91	-10,939.45	11,116.56	0.00	0.00	0.00	
17,100.00	90.00	270.15	7,707.00	2,138.17	-11,039.45	11,215.88	0.00	0.00	0.00	
17,200.00	90.00	270.15	7,707.00	2,138.42	-11,139.45	11,315.19	0.00	0.00	0.00	

Civitas Resources

Planning Report

Database:	EDM	Local Co-ordinate Reference:	Well BIJOU 3-65 20-19-24 1AH
Company:	CRESTONE PEAK RESOURCES	TVD Reference:	KB 25' @ 5618.00usft
Project:	ADAMS COUNTY	MD Reference:	KB 25' @ 5618.00usft
Site:	SEC 21-T3S-R65W	North Reference:	True
Well:	BIJOU 3-65 20-19-24 1AH	Survey Calculation Method:	Minimum Curvature
Wellbore:	OWB		
Design:	PROPOSAL 1		

Planned Survey										
Measured Depth (usft)	Inclination (°)	Azimuth (°)	Vertical Depth (usft)	+N/-S (usft)	+E/-W (usft)	Vertical Section (usft)	Dogleg Rate (°/100ft)	Build Rate (°/100ft)	Turn Rate (°/100ft)	
17,300.00	90.00	270.15	7,707.00	2,138.68	-11,239.45	11,414.50	0.00	0.00	0.00	
17,400.00	90.00	270.15	7,707.00	2,138.93	-11,339.45	11,513.82	0.00	0.00	0.00	
17,500.00	90.00	270.15	7,707.00	2,139.19	-11,439.45	11,613.13	0.00	0.00	0.00	
17,600.00	90.00	270.15	7,707.00	2,139.44	-11,539.45	11,712.44	0.00	0.00	0.00	
17,700.00	90.00	270.15	7,707.00	2,139.70	-11,639.45	11,811.76	0.00	0.00	0.00	
17,800.00	90.00	270.15	7,707.00	2,139.95	-11,739.45	11,911.07	0.00	0.00	0.00	
17,900.00	90.00	270.15	7,707.00	2,140.20	-11,839.45	12,010.38	0.00	0.00	0.00	
18,000.00	90.00	270.15	7,707.00	2,140.46	-11,939.45	12,109.70	0.00	0.00	0.00	
18,100.00	90.00	270.15	7,707.00	2,140.71	-12,039.45	12,209.01	0.00	0.00	0.00	
18,200.00	90.00	270.15	7,707.00	2,140.97	-12,139.45	12,308.32	0.00	0.00	0.00	
18,300.00	90.00	270.15	7,707.00	2,141.22	-12,239.45	12,407.64	0.00	0.00	0.00	
18,400.00	90.00	270.15	7,707.00	2,141.48	-12,339.45	12,506.95	0.00	0.00	0.00	
18,500.00	90.00	270.15	7,707.00	2,141.73	-12,439.45	12,606.26	0.00	0.00	0.00	
18,600.00	90.00	270.15	7,707.00	2,141.99	-12,539.45	12,705.58	0.00	0.00	0.00	
18,700.00	90.00	270.15	7,707.00	2,142.24	-12,639.45	12,804.89	0.00	0.00	0.00	
18,800.00	90.00	270.15	7,707.00	2,142.50	-12,739.45	12,904.20	0.00	0.00	0.00	
18,900.00	90.00	270.15	7,707.00	2,142.75	-12,839.45	13,003.51	0.00	0.00	0.00	
19,000.00	90.00	270.15	7,707.00	2,143.00	-12,939.45	13,102.83	0.00	0.00	0.00	
19,100.00	90.00	270.15	7,707.00	2,143.26	-13,039.44	13,202.14	0.00	0.00	0.00	
19,200.00	90.00	270.15	7,707.00	2,143.51	-13,139.44	13,301.45	0.00	0.00	0.00	
19,300.00	90.00	270.15	7,707.00	2,143.77	-13,239.44	13,400.77	0.00	0.00	0.00	
19,400.00	90.00	270.15	7,707.00	2,144.02	-13,339.44	13,500.08	0.00	0.00	0.00	
19,500.00	90.00	270.15	7,707.00	2,144.28	-13,439.44	13,599.39	0.00	0.00	0.00	
19,600.00	90.00	270.15	7,707.00	2,144.53	-13,539.44	13,698.71	0.00	0.00	0.00	
19,700.00	90.00	270.15	7,707.00	2,144.79	-13,639.44	13,798.02	0.00	0.00	0.00	
19,800.00	90.00	270.15	7,707.00	2,145.04	-13,739.44	13,897.33	0.00	0.00	0.00	
19,900.00	90.00	270.15	7,707.00	2,145.30	-13,839.44	13,996.65	0.00	0.00	0.00	
20,000.00	90.00	270.15	7,707.00	2,145.55	-13,939.44	14,095.96	0.00	0.00	0.00	
20,100.00	90.00	270.15	7,707.00	2,145.80	-14,039.44	14,195.27	0.00	0.00	0.00	
20,200.00	90.00	270.15	7,707.00	2,146.06	-14,139.44	14,294.59	0.00	0.00	0.00	
20,300.00	90.00	270.15	7,707.00	2,146.31	-14,239.44	14,393.90	0.00	0.00	0.00	
20,400.00	90.00	270.15	7,707.00	2,146.57	-14,339.44	14,493.21	0.00	0.00	0.00	
20,500.00	90.00	270.15	7,707.00	2,146.82	-14,439.44	14,592.53	0.00	0.00	0.00	
20,600.00	90.00	270.15	7,707.00	2,147.08	-14,539.44	14,691.84	0.00	0.00	0.00	
20,700.00	90.00	270.15	7,707.00	2,147.33	-14,639.44	14,791.15	0.00	0.00	0.00	
20,800.00	90.00	270.15	7,707.00	2,147.59	-14,739.44	14,890.47	0.00	0.00	0.00	
20,900.00	90.00	270.15	7,707.00	2,147.84	-14,839.44	14,989.78	0.00	0.00	0.00	
21,000.00	90.00	270.15	7,707.00	2,148.10	-14,939.44	15,089.09	0.00	0.00	0.00	
21,100.00	90.00	270.15	7,707.00	2,148.35	-15,039.44	15,188.41	0.00	0.00	0.00	
21,200.00	90.00	270.15	7,707.00	2,148.60	-15,139.44	15,287.72	0.00	0.00	0.00	
21,300.00	90.00	270.15	7,707.00	2,148.86	-15,239.44	15,387.03	0.00	0.00	0.00	
21,400.00	90.00	270.15	7,707.00	2,149.11	-15,339.44	15,486.35	0.00	0.00	0.00	
21,500.00	90.00	270.15	7,707.00	2,149.37	-15,439.44	15,585.66	0.00	0.00	0.00	
21,600.00	90.00	270.15	7,707.00	2,149.62	-15,539.44	15,684.97	0.00	0.00	0.00	
21,700.00	90.00	270.15	7,707.00	2,149.88	-15,639.44	15,784.28	0.00	0.00	0.00	
21,800.00	90.00	270.15	7,707.00	2,150.13	-15,739.44	15,883.60	0.00	0.00	0.00	
21,900.00	90.00	270.15	7,707.00	2,150.39	-15,839.44	15,982.91	0.00	0.00	0.00	
22,000.00	90.00	270.15	7,707.00	2,150.64	-15,939.44	16,082.22	0.00	0.00	0.00	
22,100.00	90.00	270.15	7,707.00	2,150.90	-16,039.44	16,181.54	0.00	0.00	0.00	
22,200.00	90.00	270.15	7,707.00	2,151.15	-16,139.43	16,280.85	0.00	0.00	0.00	
22,300.00	90.00	270.15	7,707.00	2,151.41	-16,239.43	16,380.16	0.00	0.00	0.00	
22,400.00	90.00	270.15	7,707.00	2,151.66	-16,339.43	16,479.48	0.00	0.00	0.00	
22,500.00	90.00	270.15	7,707.00	2,151.91	-16,439.43	16,578.79	0.00	0.00	0.00	
22,600.00	90.00	270.15	7,707.00	2,152.17	-16,539.43	16,678.10	0.00	0.00	0.00	

Civitas Resources

Planning Report

Database:	EDM	Local Co-ordinate Reference:	Well BIJOU 3-65 20-19-24 1AH
Company:	CRESTONE PEAK RESOURCES	TVD Reference:	KB 25' @ 5618.00usft
Project:	ADAMS COUNTY	MD Reference:	KB 25' @ 5618.00usft
Site:	SEC 21-T3S-R65W	North Reference:	True
Well:	BIJOU 3-65 20-19-24 1AH	Survey Calculation Method:	Minimum Curvature
Wellbore:	OWB		
Design:	PROPOSAL 1		

Planned Survey										
Measured Depth (usft)	Inclination (°)	Azimuth (°)	Vertical Depth (usft)	+N/-S (usft)	+E/-W (usft)	Vertical Section (usft)	Dogleg Rate (°/100ft)	Build Rate (°/100ft)	Turn Rate (°/100ft)	
22,700.00	90.00	270.15	7,707.00	2,152.42	-16,639.43	16,777.42	0.00	0.00	0.00	
22,800.00	90.00	270.15	7,707.00	2,152.68	-16,739.43	16,876.73	0.00	0.00	0.00	
22,900.00	90.00	270.15	7,707.00	2,152.93	-16,839.43	16,976.04	0.00	0.00	0.00	
23,000.00	90.00	270.15	7,707.00	2,153.19	-16,939.43	17,075.36	0.00	0.00	0.00	
23,100.00	90.00	270.15	7,707.00	2,153.44	-17,039.43	17,174.67	0.00	0.00	0.00	
23,200.00	90.00	270.15	7,707.00	2,153.70	-17,139.43	17,273.98	0.00	0.00	0.00	
23,300.00	90.00	270.15	7,707.00	2,153.95	-17,239.43	17,373.30	0.00	0.00	0.00	
23,400.00	90.00	270.15	7,707.00	2,154.21	-17,339.43	17,472.61	0.00	0.00	0.00	
23,500.00	90.00	270.15	7,707.00	2,154.46	-17,439.43	17,571.92	0.00	0.00	0.00	
23,600.00	90.00	270.15	7,707.00	2,154.71	-17,539.43	17,671.24	0.00	0.00	0.00	
23,700.00	90.00	270.15	7,707.00	2,154.97	-17,639.43	17,770.55	0.00	0.00	0.00	
23,800.00	90.00	270.15	7,707.00	2,155.22	-17,739.43	17,869.86	0.00	0.00	0.00	
23,900.00	90.00	270.15	7,707.00	2,155.48	-17,839.43	17,969.18	0.00	0.00	0.00	
23,966.20	90.00	270.15	7,707.00	2,155.65	-17,905.63	18,034.92	0.00	0.00	0.00	
TD at 23966.20										

Design Targets										
Target Name	Dip Angle (°)	Dip Dir. (°)	TVD (usft)	+N/-S (usft)	+E/-W (usft)	Northing (usft)	Easting (usft)	Latitude	Longitude	
- hit/miss target										
- Shape										
PBHL-BIJOU 3-65 20-19-24 1AH	0.00	0.00	7,707.00	2,155.65	-17,905.63	1,164,610.85	3,215,458.43	39.782669°N	104.733361°W	
- plan hits target center										
- Point										
LP-BIJOU 3-65 20-19-24 2A	0.00	0.00	7,707.00	2,116.56	-2,550.52	1,164,715.55	3,230,813.09	39.782579°N	104.678726°W	
- plan hits target center										
- Point										

Formations						
Measured Depth (usft)	Vertical Depth (usft)	Name	Lithology	Dip (°)	Dip Direction (°)	
24.00	24.00	Denver				
824.70	817.00	Arapahoe				
1,497.48	1,447.00	Laramie-Fox Hills Formation				
2,062.81	1,967.00	Pierre Formation				
2,660.75	2,517.00	Upper Pierre aquifer				
3,340.23	3,142.00	Base of Upper Pierre aquifer				
4,525.25	4,232.00	Larimer ("Parkman") sandstone				
4,650.27	4,347.00	Pierre Formation				
5,748.31	5,357.00	Terry ("Sussex") sandstone				
5,938.57	5,532.00	Pierre Formation				
6,563.69	6,107.00	Hygiene ("Shannon") sandstone				
6,949.64	6,462.00	Pierre Formation				
8,390.92	7,667.00	Sharon Springs Member				
8,611.04	7,707.00	Niobrara Formation				

Civitas Resources

Planning Report

Database:	EDM	Local Co-ordinate Reference:	Well BIJOU 3-65 20-19-24 1AH
Company:	CRESTONE PEAK RESOURCES	TVD Reference:	KB 25' @ 5618.00usft
Project:	ADAMS COUNTY	MD Reference:	KB 25' @ 5618.00usft
Site:	SEC 21-T3S-R65W	North Reference:	True
Well:	BIJOU 3-65 20-19-24 1AH	Survey Calculation Method:	Minimum Curvature
Wellbore:	OWB		
Design:	PROPOSAL 1		

Plan Annotations				
Measured Depth (usft)	Vertical Depth (usft)	Local Coordinates		Comment
		+N/-S (usft)	+E/-W (usft)	
100.00	100.00	0.00	0.00	Start Build 2.00
1,255.01	1,223.97	162.25	-162.60	Start 6617.70 hold at 1255.01 MD
7,872.71	7,311.07	1,996.18	-2,000.53	Start DLS 10.00 TFO -47.18
8,611.04	7,707.00	2,116.56	-2,550.52	Start 15355.15 hold at 8611.04 MD
23,966.20	7,707.00	2,155.65	-17,905.63	TD at 23966.20