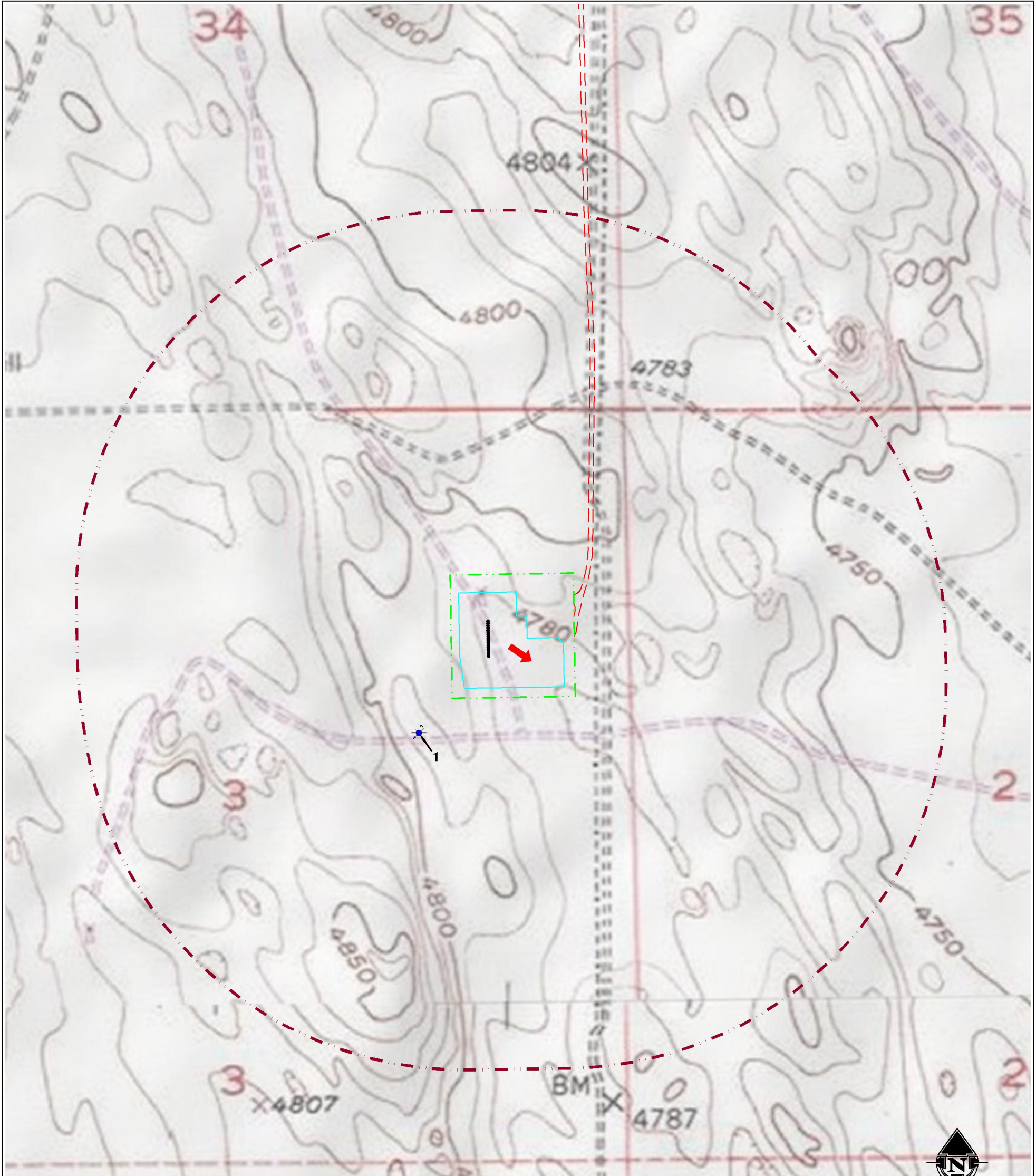


HYDROLOGY MAP
WALLSTREET FED 8-3HZ
HORIZONTAL MULTI-WELL PAD

SE1/4 NE1/4 SECTION 3, TOWNSHIP 3 NORTH, RANGE 63 WEST, 6TH P.M., WELD COUNTY, COLORADO



- NOTES:
1. WORKING PAD SURFACE IS NOT WITHIN 2640' OF A GUDI OR TYPE III AQUIFER PUBLIC WATER SYSTEM WELL.
 2. WORKING PAD SURFACE DOES NOT HAVE ANY SURFACE WATERS WITHIN 2640' THAT ARE 15 MILES UPSTREAM OF A PUBLIC WATER SYSTEM INTAKE.

1. EXISTING WATER WELL (PERMIT #87596-F, WELL CONSTRUCTED) IS 440' SW.

LEGEND		PROPOSED OIL & GAS LOCATION WORKING PAD SURFACE 100-YEAR FLOODPLAIN (PRELIMINARY, 2020) 100-YEAR FLOODWAY (PRELIMINARY, 2020) 100-YEAR FLOODPLAIN (EFFECTIVE, 2016) NWI RIVERINE/POND/WETLAND NWI RIPARIAN AREA
	PROPOSED WELL	
	WATER WELL	
	PROPOSED ACCESS ROAD	
	DITCH/CANAL/DRAINAGE	
	DOWNGRADIENT	
	2640' WORKING PAD SURFACE BUFFER	

ALL MEASUREMENTS ARE MADE FROM NEAREST EDGE OF THE WORKING PAD SURFACE

609 CONSULTING, LLC
LOVELAND OFFICE
6706 South Franklin Avenue
Loveland, Colorado 80538
Phone: 970-776-4331
SHERIDAN OFFICE
1095 Saberton Avenue
Sheridan, Wyoming 82801
Phone: 307-674-6069

DATE SURVEYED: 9/27/23
DATE: 11/8/23
DRAFTER: AMPZ
REVISED: 11/30/23

DATA SOURCES & NOTES:
- TOPOGRAPHIC MAP IS COURTESY OF USGS.
- WATER WELLS COURTESY OF COLORADO DIVISION OF WATER RESOURCES.
- MANY FEATURES ON THIS MAP COME FROM PUBLICLY AVAILABLE DATA AND SURFACE WATER LYING OUTSIDE THE SURFACE PROPERTY MAY HAVE BEEN OBTAINED FROM AERIAL IMAGERY. THE ACCURACY AND COMPLETENESS OF SAID DATA HAS NOT BEEN VERIFIED BY 609 CONSULTING, LLC. EXISTING CONDITIONS MAY DIFFER FROM WHAT IS SHOWN.

PREPARED FOR:
Kerr-McGee Oil & Gas Onshore LP