

WELL PAD LOCATION PICTURES
WALLSTREET FED 8-3HZ

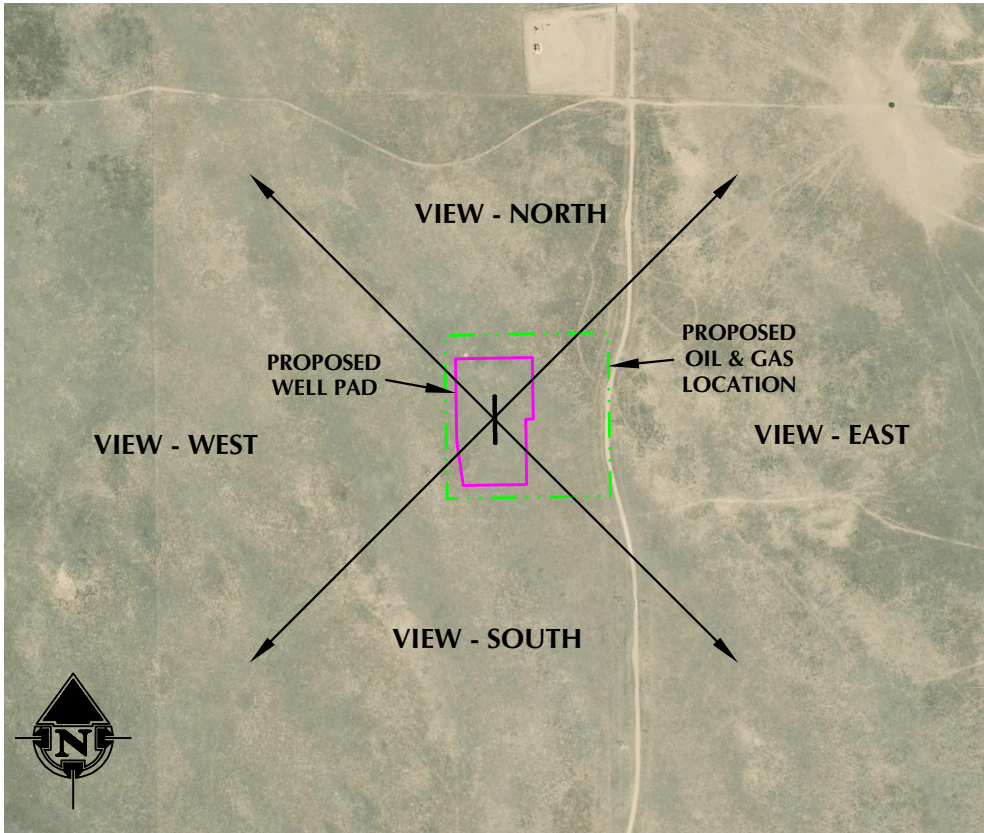
SE1/4 NE1/4 SECTION 3, TOWNSHIP 3 NORTH, RANGE 63 WEST, 6TH P.M., WELD COUNTY, COLORADO



LOCATION PICTURE OF WALLSTREET FED 8-3HZ WELL PAD - CAMERA VIEW NORTH



LOCATION PICTURE OF WALLSTREET FED 8-3HZ WELL PAD - CAMERA VIEW SOUTH



VIEW - OVERHEAD
AERIAL IMAGERY COURTESY OF NAIP
(2021)



LOCATION PICTURE OF WALLSTREET FED 8-3HZ WELL PAD - CAMERA VIEW EAST



LOCATION PICTURE OF WALLSTREET FED 8-3HZ WELL PAD - CAMERA VIEW WEST



LOVELAND OFFICE
6706 North Franklin Avenue
Loveland, Colorado 80538
Phone 970-776-4331

SHERIDAN OFFICE
1095 Saberton Avenue
Sheridan, Wyoming 82801
Phone 307-674-0609

CONSULTING, LLC

**Kerr-McGee Oil &
Gas Onshore LP**

**1099 18th Street
Denver, Colorado 80202**

DATE SURVEYED: 9/27/23
DATE: 11/17/23
DRAFTER: AMPZ
REVISED: 11/30/23

DATA SOURCES:
-AERIAL IMAGERY COURTESY OF NAIP.