

WELL PAD LOCATION PICTURES
5 MINUTES TO MIDNIGHT 8-34HZ
NE1/4 SE1/4 & SE1/4 NE1/4 SECTION 34, TOWNSHIP 4 NORTH, RANGE 63 WEST, 6TH P.M., WELD COUNTY, COLORADO



LOCATION PICTURE OF 5 MINUTES TO MIDNIGHT 8-34HZ WELL PAD -
CAMERA VIEW NORTH



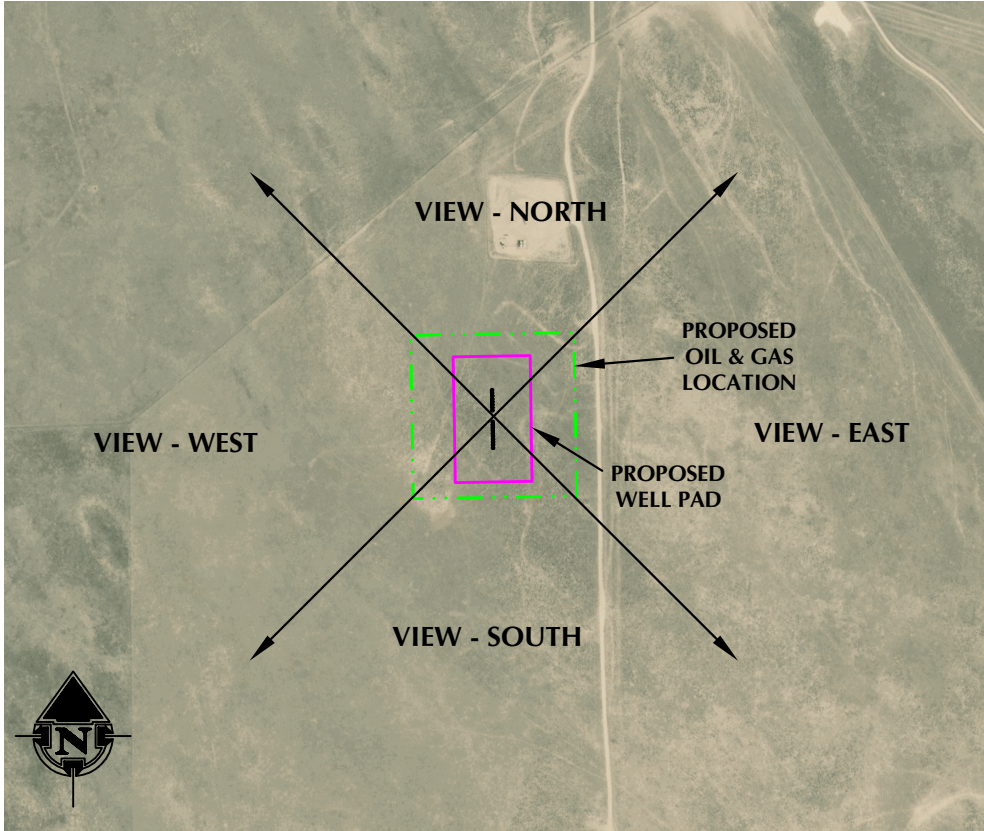
LOCATION PICTURE OF 5 MINUTES TO MIDNIGHT 8-34HZ WELL PAD -
CAMERA VIEW SOUTH



LOCATION PICTURE OF 5 MINUTES TO MIDNIGHT 8-34HZ WELL PAD -
CAMERA VIEW EAST



LOCATION PICTURE OF 5 MINUTES TO MIDNIGHT 8-34HZ WELL PAD -
CAMERA VIEW WEST



VIEW - OVERHEAD
AERIAL IMAGERY COURTESY OF NAIP
(2021)

K:\ANDAKO\2017\2017_197_CERVE_RANCH_14N_R63W\DWG\4_5 MINUTES TO MIDNIGHT\04_5 MINUTES TO MIDNIGHT.dwg, 11/19/2023 7:58:27 PM, ssundberg



LOVELAND OFFICE
6706 North Franklin Avenue
Loveland, Colorado 80538
Phone 970-776-4331

SHERIDAN OFFICE
1095 Saberton Avenue
Sheridan, Wyoming 82801
Phone 307-674-0609

**Kerr-McGee Oil &
Gas Onshore LP**
1099 18th Street
Denver, Colorado 80202

DATE SURVEYED: 9/27/23
DATE: 11/20/23
DRAFTER: AMPZ
REVISED:

DATA SOURCES:
-AERIAL IMAGERY COURTESY OF NAIP.