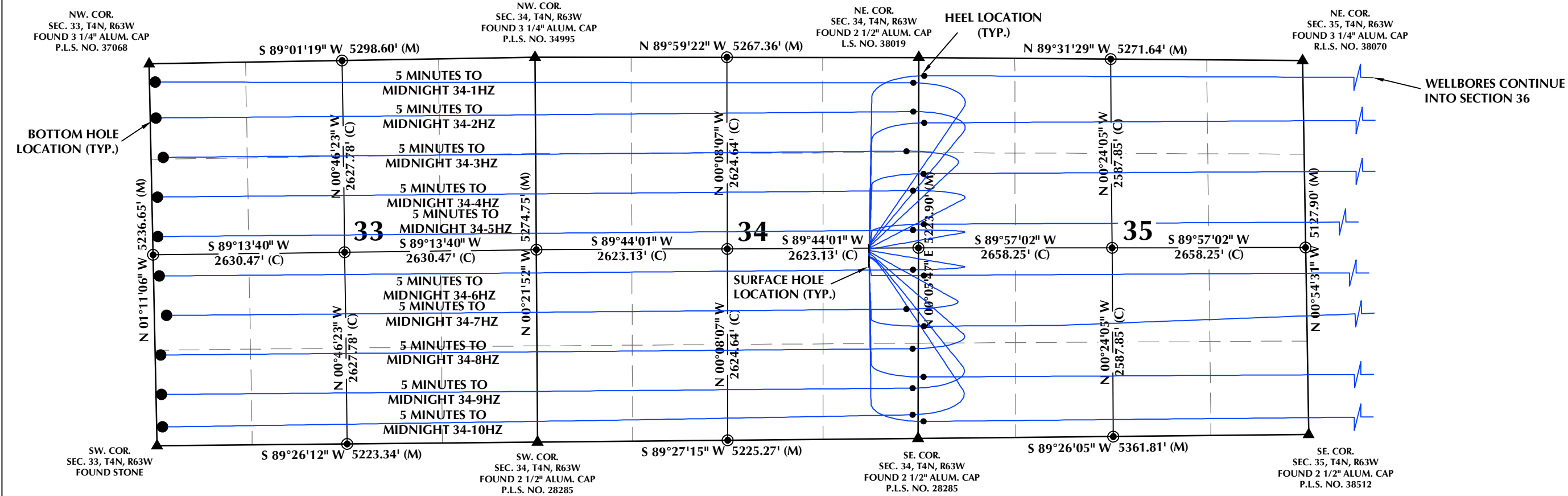
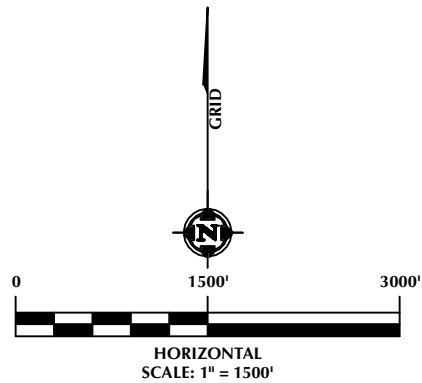


DIRECTIONAL WELL PLAT (ECMC) / MULTI-WELL PLAN (OGED)  
SECTIONS 33, 34, 35 & 36, T4N, R63W, 6TH P.M.



- NOTES:
- ▲ INDICATES SECTION CORNER.
  - INDICATES CALCULATED CORNER.
  - BASIS OF BEARINGS DERIVED FROM COLORADO COORDINATE SYSTEM OF 1983, NORTH ZONE.
  - ALL MEASURED DISTANCES ARE GRID.
  - COMBINED SCALE FACTOR: .99973095 CALCULATED FROM THE SE. CORNER OF SECTION 34, T4N, R63W.
  - WELL FOOTAGES ARE MEASURED AT RIGHT ANGLES TO THE SECTION LINES.



LOVELAND OFFICE  
6706 North Franklin Avenue  
Loveland, Colorado 80538  
Phone 970-776-4331

SHERIDAN OFFICE  
1095 Saberton Avenue  
Sheridan, Wyoming 82801  
Phone 307-674-0609

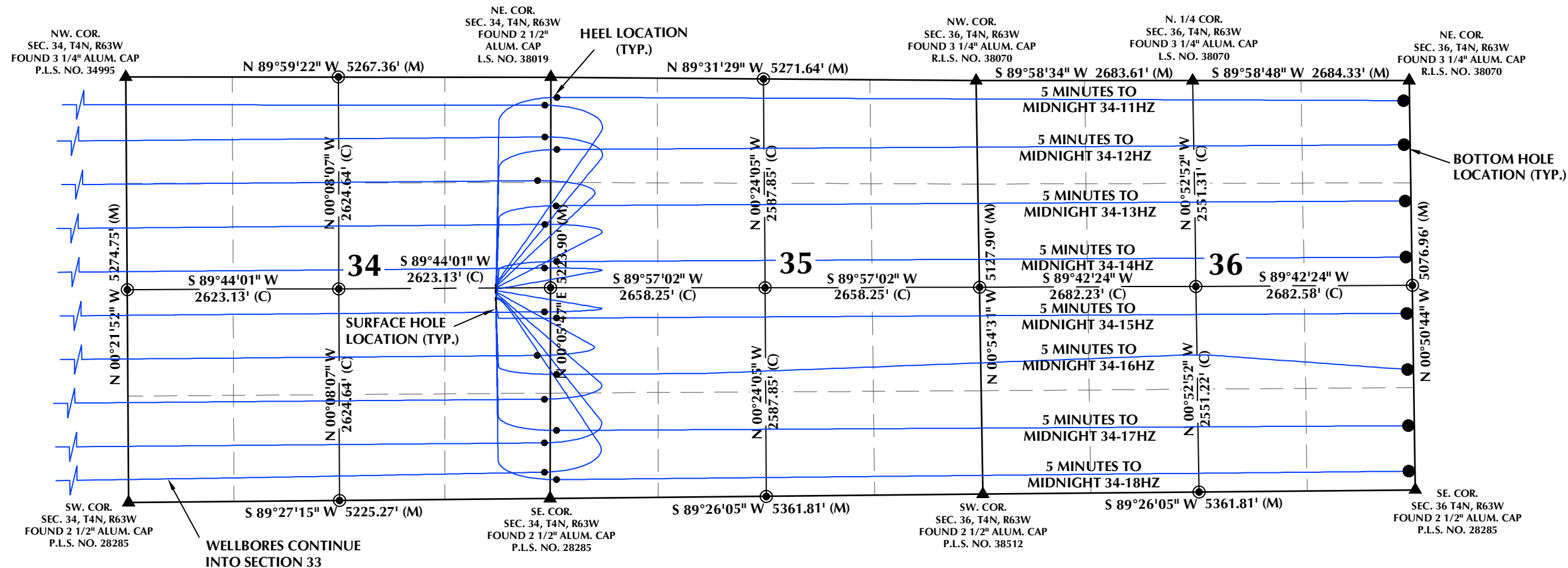
**Kerr-McGee Oil &  
Gas Onshore LP**  
1099 18th Street  
Denver, Colorado 80202

WELL PAD - 5 MINUTES TO MIDNIGHT 8-34HZ

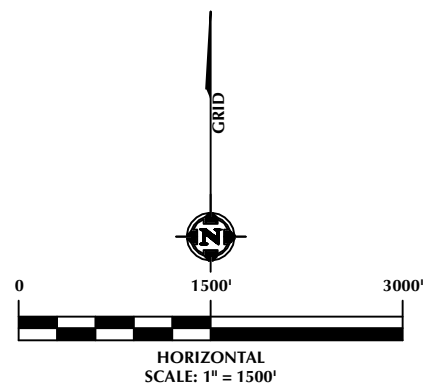
DIRECTIONAL WELL PLAT (ECMC) / MULTI-WELL PLAN (OGED)  
5 MINUTES TO MIDNIGHT 34-1HZ, 5 MINUTES TO MIDNIGHT 34-2HZ,  
5 MINUTES TO MIDNIGHT 34-3HZ, 5 MINUTES TO MIDNIGHT 34-4HZ,  
5 MINUTES TO MIDNIGHT 34-5HZ, 5 MINUTES TO MIDNIGHT 34-6HZ,  
5 MINUTES TO MIDNIGHT 34-7HZ, 5 MINUTES TO MIDNIGHT 34-8HZ,  
5 MINUTES TO MIDNIGHT 34-9HZ, 5 MINUTES TO MIDNIGHT 34-10HZ,  
5 MINUTES TO MIDNIGHT 34-11HZ, 5 MINUTES TO MIDNIGHT 34-12HZ,  
5 MINUTES TO MIDNIGHT 34-13HZ, 5 MINUTES TO MIDNIGHT 34-14HZ,  
5 MINUTES TO MIDNIGHT 34-15HZ, 5 MINUTES TO MIDNIGHT 34-16HZ,  
5 MINUTES TO MIDNIGHT 34-17HZ & 5 MINUTES TO MIDNIGHT 34-18HZ  
LOCATED IN SECTIONS 33, 34, 35 & 36, T4N, R63W, 6TH P.M.  
WELD COUNTY, COLORADO

DRAFTED BY:	SJM	CHECKED BY:	RKF	SHEET NO:
DATE DRAFTED:	11/8/23	DATE SURVEYED:	9/27/23	1A
REVISED:		FILE NAME:	17-197	1A OF 1

DIRECTIONAL WELL PLAT (ECMC) / MULTI-WELL PLAN (OGED)  
SECTIONS 33, 34, 35 & 36, T4N, R63W, 6TH P.M.



- NOTES:
- ▲ INDICATES SECTION CORNER.
  - INDICATES CALCULATED CORNER.
  - BASIS OF BEARINGS DERIVED FROM COLORADO COORDINATE SYSTEM OF 1983, NORTH ZONE.
  - ALL MEASURED DISTANCES ARE GRID.
  - COMBINED SCALE FACTOR: .99973095 CALCULATED FROM THE SE. CORNER OF SECTION 34, T4N, R63W.
  - WELL FOOTAGES ARE MEASURED AT RIGHT ANGLES TO THE SECTION LINES.



LOVELAND OFFICE  
6706 North Franklin Avenue  
Loveland, Colorado 80538  
Phone 970-776-4331

SHERIDAN OFFICE  
1095 Saberton Avenue  
Sheridan, Wyoming 82801  
Phone 307-674-0609

**Kerr-McGee Oil &  
Gas Onshore LP**  
1099 18th Street  
Denver, Colorado 80202

WELL PAD - 5 MINUTES TO MIDNIGHT 8-34HZ

DIRECTIONAL WELL PLAT (ECMC) / MULTI-WELL PLAN (OGED)  
5 MINUTES TO MIDNIGHT 34-1HZ, 5 MINUTES TO MIDNIGHT 34-2HZ,  
5 MINUTES TO MIDNIGHT 34-3HZ, 5 MINUTES TO MIDNIGHT 34-4HZ,  
5 MINUTES TO MIDNIGHT 34-5HZ, 5 MINUTES TO MIDNIGHT 34-6HZ,  
5 MINUTES TO MIDNIGHT 34-7HZ, 5 MINUTES TO MIDNIGHT 34-8HZ,  
5 MINUTES TO MIDNIGHT 34-9HZ, 5 MINUTES TO MIDNIGHT 34-10HZ,  
5 MINUTES TO MIDNIGHT 34-11HZ, 5 MINUTES TO MIDNIGHT 34-12HZ,  
5 MINUTES TO MIDNIGHT 34-13HZ, 5 MINUTES TO MIDNIGHT 34-14HZ,  
5 MINUTES TO MIDNIGHT 34-15HZ, 5 MINUTES TO MIDNIGHT 34-16HZ,  
5 MINUTES TO MIDNIGHT 34-17HZ & 5 MINUTES TO MIDNIGHT 34-18HZ  
LOCATED IN SECTIONS 33, 34, 35 & 36, T4N, R63W, 6TH P.M.  
WELD COUNTY, COLORADO

DRAFTED BY:	SJM	CHECKED BY:	RKF	SHEET NO:
DATE DRAFTED:	11/8/23	DATE SURVEYED:	9/27/23	1B
REVISED:		FILE NAME:	17-197	1B OF 1

DIRECTIONAL WELL PLAT (ECMC) / MULTI-WELL PLAN (OGED)  
SECTIONS 33, 34, 35 & 36, T4N, R63W, 6TH P.M.

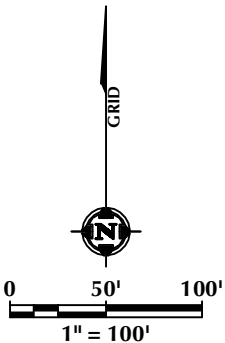
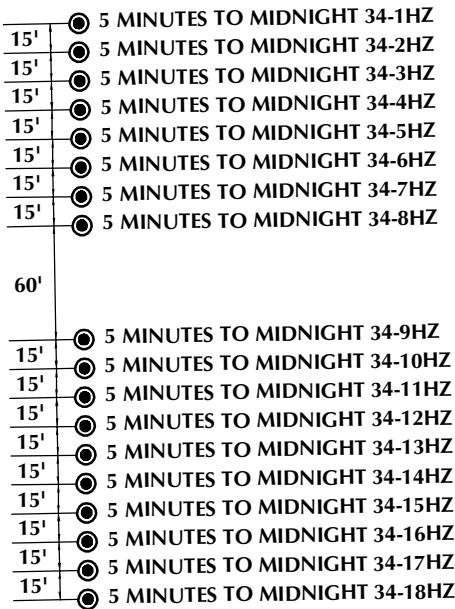
WELL NOTES:

5 MINUTES TO MIDNIGHT 34-1HZ  
SURFACE HOLE LOCATION: 2573' FNL, 682' FEL (SEC. 34, T4N, R63W)  
HEEL LOCATION: 348' FNL, 73' FEL (SEC. 34, T4N, R63W)  
BOTTOM HOLE LOCATION: 250' FNL, 75' FWL (SEC. 33, T4N, R63W)  
5 MINUTES TO MIDNIGHT 34-2HZ  
SURFACE HOLE LOCATION: 2588' FNL, 682' FEL (SEC. 34, T4N, R63W)  
HEEL LOCATION: 743' FNL, 75' FEL (SEC. 34, T4N, R63W)  
BOTTOM HOLE LOCATION: 742' FNL, 75' FWL (SEC. 33, T4N, R63W)  
5 MINUTES TO MIDNIGHT 34-3HZ  
SURFACE HOLE LOCATION: 2603' FNL, 682' FEL (SEC. 34, T4N, R63W)  
HEEL LOCATION: 1285' FNL, 165' FEL (SEC. 34, T4N, R63W)  
BOTTOM HOLE LOCATION: 1285' FNL, 165' FWL (SEC. 33, T4N, R63W)  
5 MINUTES TO MIDNIGHT 34-4HZ  
SURFACE HOLE LOCATION: 2613' FSL, 682' FEL (SEC. 34, T4N, R63W)  
HEEL LOCATION: 1827' FNL, 75' FEL (SEC. 34, T4N, R63W)  
BOTTOM HOLE LOCATION: 1827' FNL, 75' FWL (SEC. 33, T4N, R63W)  
5 MINUTES TO MIDNIGHT 34-5HZ  
SURFACE HOLE LOCATION: 2598' FSL, 681' FEL (SEC. 34, T4N, R63W)  
HEEL LOCATION: 2369' FNL, 75' FEL (SEC. 34, T4N, R63W)  
BOTTOM HOLE LOCATION: 2369' FNL, 75' FWL (SEC. 33, T4N, R63W)  
5 MINUTES TO MIDNIGHT 34-6HZ  
SURFACE HOLE LOCATION: 2583' FSL, 681' FEL (SEC. 34, T4N, R63W)  
HEEL LOCATION: 2313' FSL, 75' FEL (SEC. 34, T4N, R63W)  
BOTTOM HOLE LOCATION: 2326' FSL, 75' FWL (SEC. 33, T4N, R63W)

5 MINUTES TO MIDNIGHT 34-7HZ  
SURFACE HOLE LOCATION: 2568' FSL, 681' FEL (SEC. 34, T4N, R63W)  
HEEL LOCATION: 1772' FSL, 165' FEL (SEC. 34, T4N, R63W)  
BOTTOM HOLE LOCATION: 1784' FSL, 165' FWL (SEC. 33, T4N, R63W)  
5 MINUTES TO MIDNIGHT 34-8HZ  
SURFACE HOLE LOCATION: 2553' FSL, 680' FEL (SEC. 34, T4N, R63W)  
HEEL LOCATION: 1229' FSL, 75' FEL (SEC. 34, T4N, R63W)  
BOTTOM HOLE LOCATION: 1242' FSL, 75' FWL (SEC. 33, T4N, R63W)  
5 MINUTES TO MIDNIGHT 34-9HZ  
SURFACE HOLE LOCATION: 2493' FSL, 679' FEL (SEC. 34, T4N, R63W)  
HEEL LOCATION: 687' FSL, 75' FEL (SEC. 34, T4N, R63W)  
BOTTOM HOLE LOCATION: 700' FSL, 75' FWL (SEC. 33, T4N, R63W)  
5 MINUTES TO MIDNIGHT 34-10HZ  
SURFACE HOLE LOCATION: 2478' FSL, 679' FEL (SEC. 34, T4N, R63W)  
HEEL LOCATION: 323' FSL, 75' FEL (SEC. 34, T4N, R63W)  
BOTTOM HOLE LOCATION: 255' FSL, 76' FWL (SEC. 33, T4N, R63W)  
5 MINUTES TO MIDNIGHT 34-11HZ  
SURFACE HOLE LOCATION: 2463' FSL, 679' FEL (SEC. 34, T4N, R63W)  
HEEL LOCATION: 250' FNL, 76' FWL (SEC. 35, T4N, R63W)  
BOTTOM HOLE LOCATION: 250' FNL, 75' FEL (SEC. 36, T4N, R63W)  
5 MINUTES TO MIDNIGHT 34-12HZ  
SURFACE HOLE LOCATION: 2448' FSL, 679' FEL (SEC. 34, T4N, R63W)  
HEEL LOCATION: 897' FNL, 75' FWL (SEC. 35, T4N, R63W)  
BOTTOM HOLE LOCATION: 797' FNL, 75' FEL (SEC. 36, T4N, R63W)

5 MINUTES TO MIDNIGHT 34-13HZ  
SURFACE HOLE LOCATION: 2433' FSL, 678' FEL (SEC. 34, T4N, R63W)  
HEEL LOCATION: 1595' FNL, 76' FWL (SEC. 35, T4N, R63W)  
BOTTOM HOLE LOCATION: 1494' FNL, 74' FEL (SEC. 36, T4N, R63W)  
5 MINUTES TO MIDNIGHT 34-14HZ  
SURFACE HOLE LOCATION: 2418' FSL, 678' FEL (SEC. 34, T4N, R63W)  
HEEL LOCATION: 2287' FNL, 75' FWL (SEC. 35, T4N, R63W)  
BOTTOM HOLE LOCATION: 2191' FNL, 75' FEL (SEC. 36, T4N, R63W)  
5 MINUTES TO MIDNIGHT 34-15HZ  
SURFACE HOLE LOCATION: 2403' FSL, 678' FEL (SEC. 34, T4N, R63W)  
HEEL LOCATION: 2233' FSL, 74' FWL (SEC. 35, T4N, R63W)  
BOTTOM HOLE LOCATION: 2189' FSL, 75' FEL (SEC. 36, T4N, R63W)  
5 MINUTES TO MIDNIGHT 34-16HZ  
SURFACE HOLE LOCATION: 2388' FSL, 677' FEL (SEC. 34, T4N, R63W)  
HEEL LOCATION: 1536' FSL, 75' FWL (SEC. 35, T4N, R63W)  
BOTTOM HOLE LOCATION: 1491' FSL, 75' FEL (SEC. 36, T4N, R63W)  
5 MINUTES TO MIDNIGHT 34-17HZ  
SURFACE HOLE LOCATION: 2373' FSL, 677' FEL (SEC. 34, T4N, R63W)  
HEEL LOCATION: 839' FSL, 75' FWL (SEC. 35, T4N, R63W)  
BOTTOM HOLE LOCATION: 794' FSL, 75' FEL (SEC. 36, T4N, R63W)  
5 MINUTES TO MIDNIGHT 34-18HZ  
SURFACE HOLE LOCATION: 2358' FSL, 677' FEL (SEC. 34, T4N, R63W)  
HEEL LOCATION: 230' FSL, 75' FWL (SEC. 35, T4N, R63W)  
BOTTOM HOLE LOCATION: 230' FSL, 75' FEL (SEC. 36, T4N, R63W)

WELL HEAD SPACING DETAIL



WELL PAD - 5 MINUTES TO MIDNIGHT 8-34HZ

DIRECTIONAL WELL PLAT (ECMC) / MULTI-WELL PLAN (OGED)  
5 MINUTES TO MIDNIGHT 34-1HZ, 5 MINUTES TO MIDNIGHT 34-2HZ,  
5 MINUTES TO MIDNIGHT 34-3HZ, 5 MINUTES TO MIDNIGHT 34-4HZ,  
5 MINUTES TO MIDNIGHT 34-5HZ, 5 MINUTES TO MIDNIGHT 34-6HZ,  
5 MINUTES TO MIDNIGHT 34-7HZ, 5 MINUTES TO MIDNIGHT 34-8HZ,  
5 MINUTES TO MIDNIGHT 34-9HZ, 5 MINUTES TO MIDNIGHT 34-10HZ,  
5 MINUTES TO MIDNIGHT 34-11HZ, 5 MINUTES TO MIDNIGHT 34-12HZ,  
5 MINUTES TO MIDNIGHT 34-13HZ, 5 MINUTES TO MIDNIGHT 34-14HZ,  
5 MINUTES TO MIDNIGHT 34-15HZ, 5 MINUTES TO MIDNIGHT 34-16HZ,  
5 MINUTES TO MIDNIGHT 34-17HZ & 5 MINUTES TO MIDNIGHT 34-18HZ  
LOCATED IN SECTIONS 33, 34, 35 & 36, T4N, R63W, 6TH P.M.  
WELD COUNTY, COLORADO

DRAFTED BY:	SJM	CHECKED BY:	RKF	SHEET NO:
DATE DRAFTED:	11/8/23	DATE SURVEYED:	9/27/23	1C
REVISED:		FILE NAME:	17-197	1C OF 1

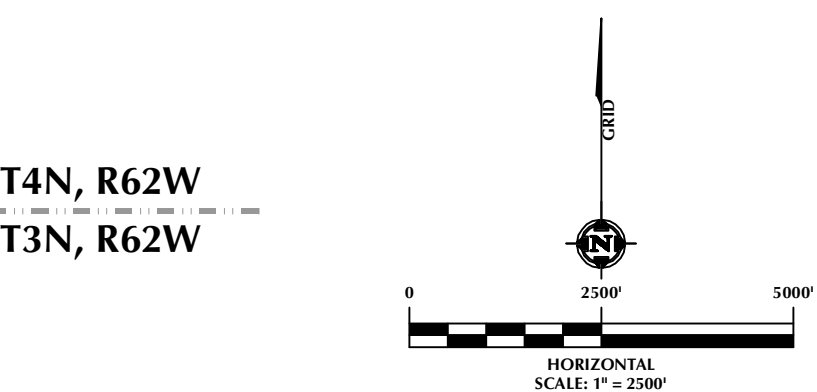
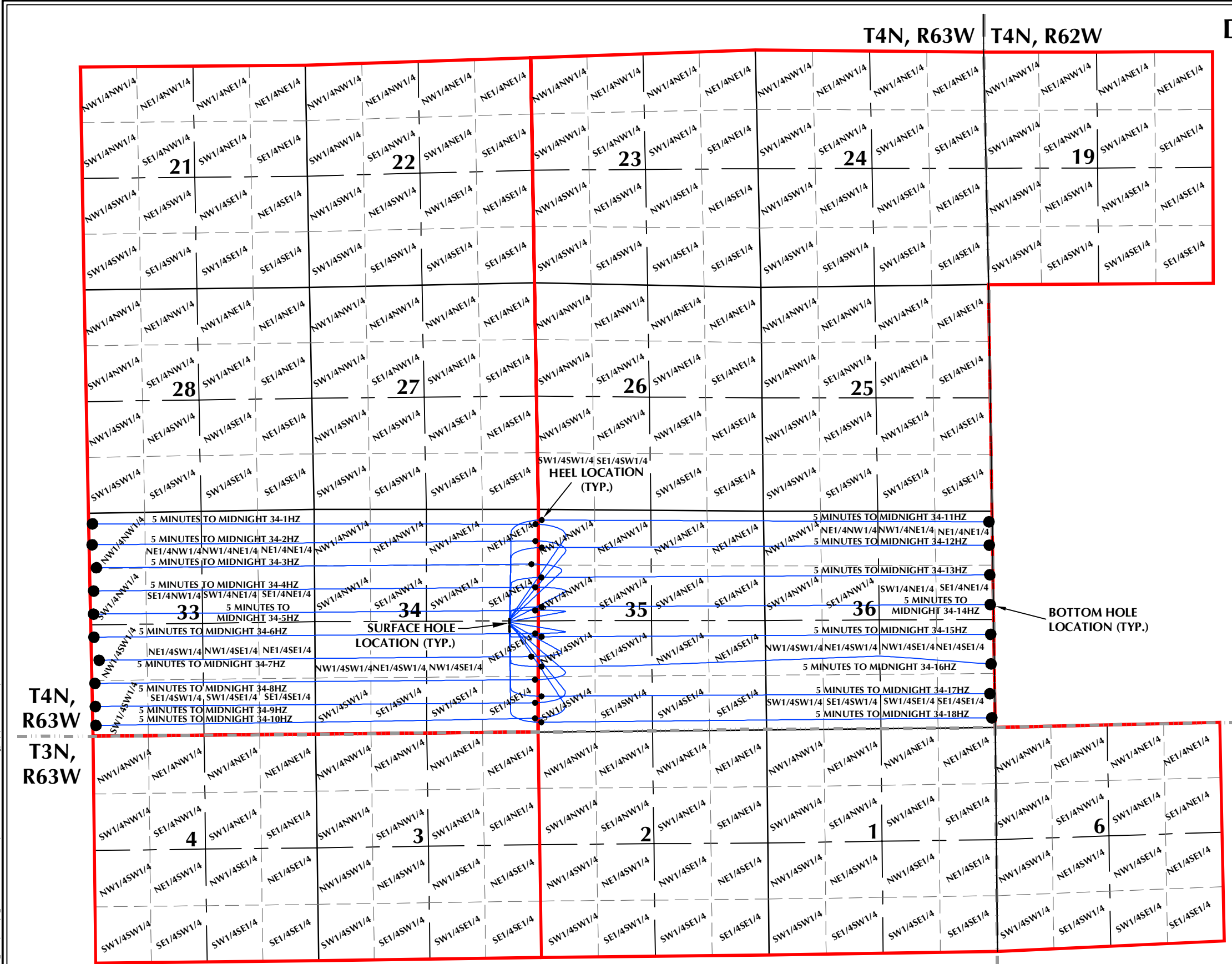


LOVELAND OFFICE  
6706 North Franklin Avenue  
Loveland, Colorado 80538  
Phone 970-776-4331  
  
SHERIDAN OFFICE  
1095 Saberton Avenue  
Sheridan, Wyoming 82801  
Phone 307-674-0609

Kerr-McGee Oil &  
Gas Onshore LP  
1099 18th Street  
Denver, Colorado 80202



DIRECTIONAL WELL PLAT (ECMC) /  
MULTI-WELL PLAN (OGED)  
SECTIONS 33, 34, 35 & 36  
T4N, R63W, 6TH P.M.



- LEGEND:
- DSU BOUNDARY
  - TOWNSHIP/RANGE LINE
  - WELLBORE TRAJECTORY
  - HEEL LOCATION
  - BOTTOM HOLE LOCATION



LOVELAND OFFICE  
6706 North Franklin Avenue  
Loveland, Colorado 80538  
Phone 970-776-4331

SHERIDAN OFFICE  
1095 Saberton Avenue  
Sheridan, Wyoming 82801  
Phone 307-674-0609

**Kerr-McGee Oil &  
Gas Onshore LP**  
1099 18th Street  
Denver, Colorado 80202

WELL PAD - 5 MINUTES TO MIDNIGHT 8-34HZ			
DIRECTIONAL WELL PLAT (ECMC) / MULTI-WELL PLAN (OGED) 5 MINUTES TO MIDNIGHT 34-1HZ, 5 MINUTES TO MIDNIGHT 34-2HZ, 5 MINUTES TO MIDNIGHT 34-3HZ, 5 MINUTES TO MIDNIGHT 34-4HZ, 5 MINUTES TO MIDNIGHT 34-5HZ, 5 MINUTES TO MIDNIGHT 34-6HZ, 5 MINUTES TO MIDNIGHT 34-7HZ, 5 MINUTES TO MIDNIGHT 34-8HZ, 5 MINUTES TO MIDNIGHT 34-9HZ, 5 MINUTES TO MIDNIGHT 34-10HZ, 5 MINUTES TO MIDNIGHT 34-11HZ, 5 MINUTES TO MIDNIGHT 34-12HZ, 5 MINUTES TO MIDNIGHT 34-13HZ, 5 MINUTES TO MIDNIGHT 34-14HZ, 5 MINUTES TO MIDNIGHT 34-15HZ, 5 MINUTES TO MIDNIGHT 34-16HZ, 5 MINUTES TO MIDNIGHT 34-17HZ & 5 MINUTES TO MIDNIGHT 34-18HZ LOCATED IN SECTIONS 33, 34, 35 & 36, T4N, R63W, 6TH P.M. WELD COUNTY, COLORADO			
DRAFTED BY:	SJM	CHECKED BY:	RKF
DATE DRAFTED:	11/8/23	DATE SURVEYED:	9/27/23
REVISED:		FILE NAME:	17-197
			SHEET NO: <b>1D</b> 1D OF 1