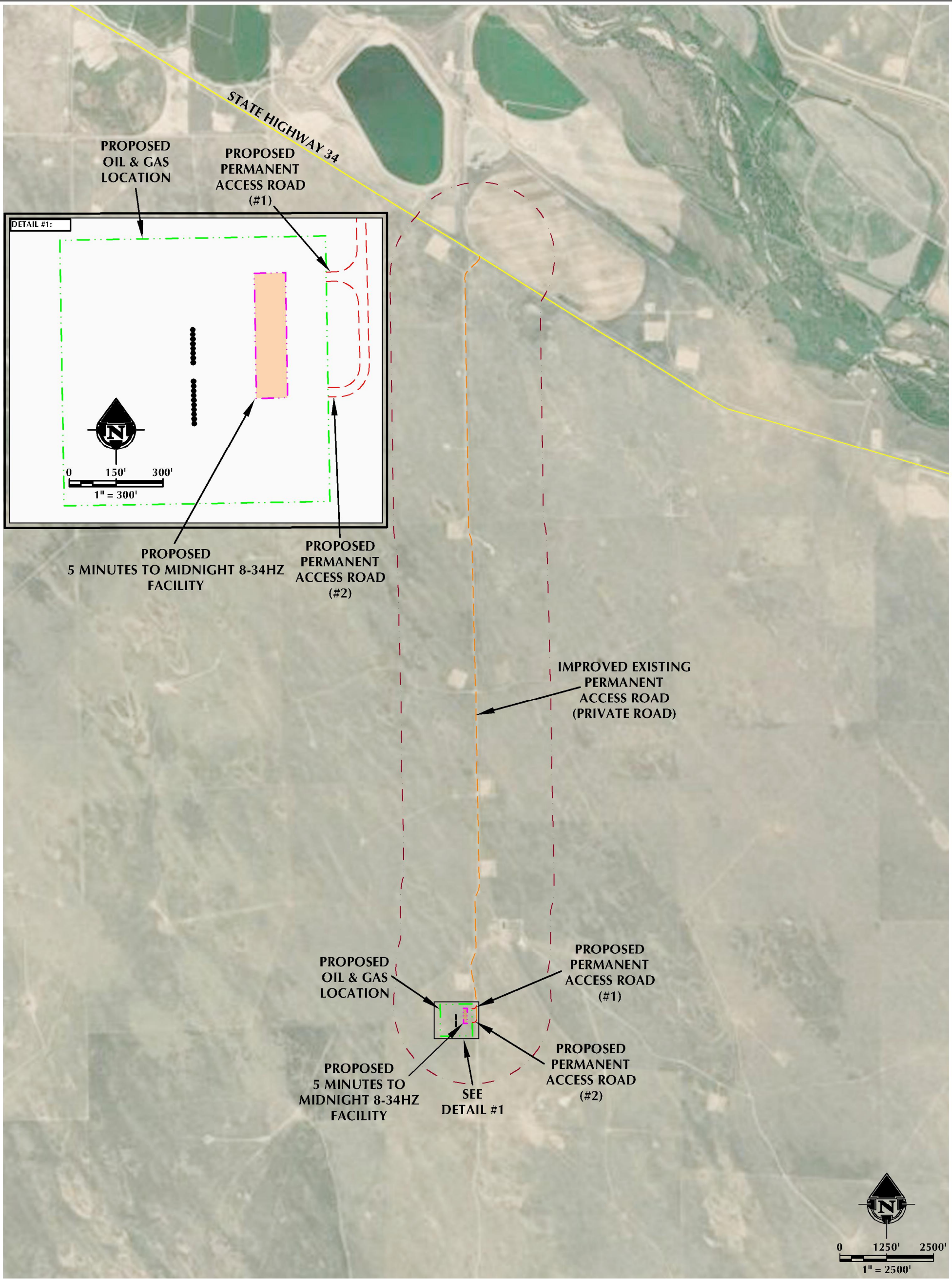


ACCESS MAP

5 MINUTES TO MIDNIGHT 8-34HZ

NE1/4 SE1/4 & SE1/4 NE1/4 SECTION 34, TOWNSHIP 4 NORTH, RANGE 63 WEST, 6TH P.M., WELD COUNTY, COLORADO



LEGEND			INTERSECTION OF IMPROVED ACCESS ROAD AND STATE HIGHWAY 34		INTERSECTION OF PERMANENT ACCESS ROAD (#1) AND IMPROVED ACCESS ROAD	INTERSECTION OF PERMANENT ACCESS ROAD (#2) AND IMPROVED ACCESS ROAD
●	PROPOSED WELL	---	2000' ACCESS BUFFER	LATITUDE: 40.324586°	LATITUDE: 40.269560°	LATITUDE: 40.268545°
---	PROPOSED PERMANENT ACCESS ROAD	---	RESIDENTIAL BUILDING UNIT	LONGITUDE: -104.413859°	LONGITUDE: -104.415088°	LONGITUDE: -104.415064°
---	IMPROVED PERMANENT ACCESS ROAD	---	NON-RESIDENTIAL BUILDING UNIT			
---	PROPOSED TEMPORARY ACCESS ROAD	---	PROPOSED FACILITY PAD			
---	PUBLIC ROAD					
---	PROPOSED OIL & GAS LOCATION					

609 CONSULTING, LLC
LOVELAND OFFICE: 6706 South Franklin Avenue, Loveland, Colorado 80538, Phone: 970.776-1331
SHERIDAN OFFICE: 1095 Saberton Avenue, Sheridan, Wyoming 82801, Phone: 307.674-0609

DATE SURVEYED: 9/27/23
DATE: 11/20/23
DRAFTER: AMPZ
REVISED:

DATA SOURCES & NOTES:
- AERIAL COURTESY OF NAIP.

PREPARED FOR:
Kerr-McGee Oil & Gas Onshore LP