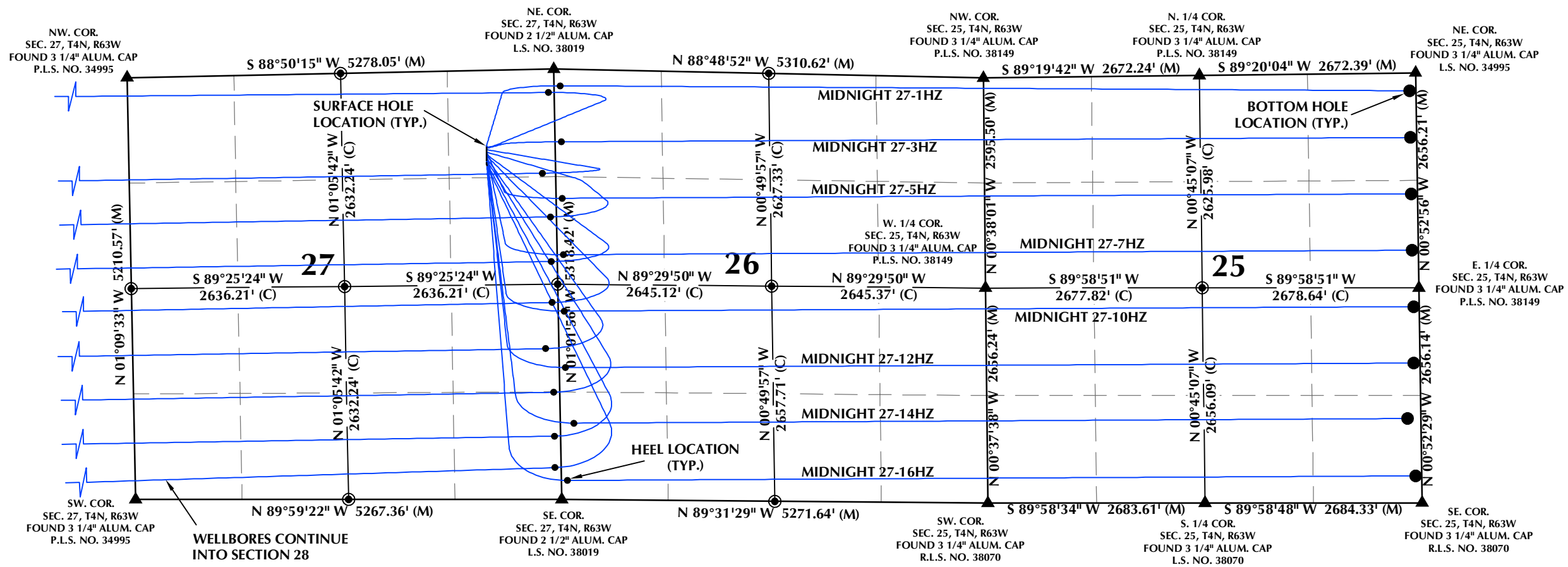
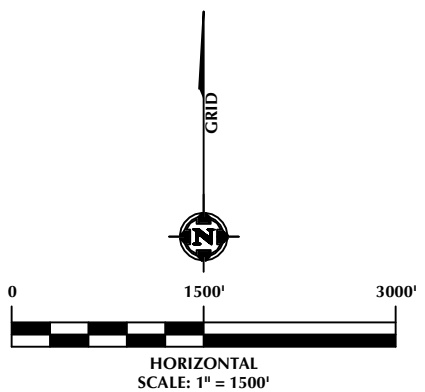


DIRECTIONAL WELL PLAT (ECMC) / MULTI-WELL PLAN (OGED)
SECTIONS 25, 26, 27 & 28, T4N, R63W, 6TH P.M.



- NOTES:
- 1. ▲ INDICATES SECTION CORNER.
 - 2. ● INDICATES CALCULATED CORNER.
 - 3. BASIS OF BEARINGS DERIVED FROM COLORADO COORDINATE SYSTEM OF 1983, NORTH ZONE.
 - 4. ALL MEASURED DISTANCES ARE GRID.
 - 5. COMBINED SCALE FACTOR: .99973176 CALCULATED FROM THE NW. CORNER OF SECTION 26, T4N, R63W.
 - 6. WELL FOOTAGES ARE MEASURED AT RIGHT ANGLES TO THE SECTION LINES.



LOVELAND OFFICE
6706 North Franklin Avenue
Loveland, Colorado 80538
Phone 970-776-4331

SHERIDAN OFFICE
1095 Saberton Avenue
Sheridan, Wyoming 82801
Phone 307-674-0609

**Kerr-McGee Oil &
Gas Onshore LP**

1099 18th Street
Denver, Colorado 80202

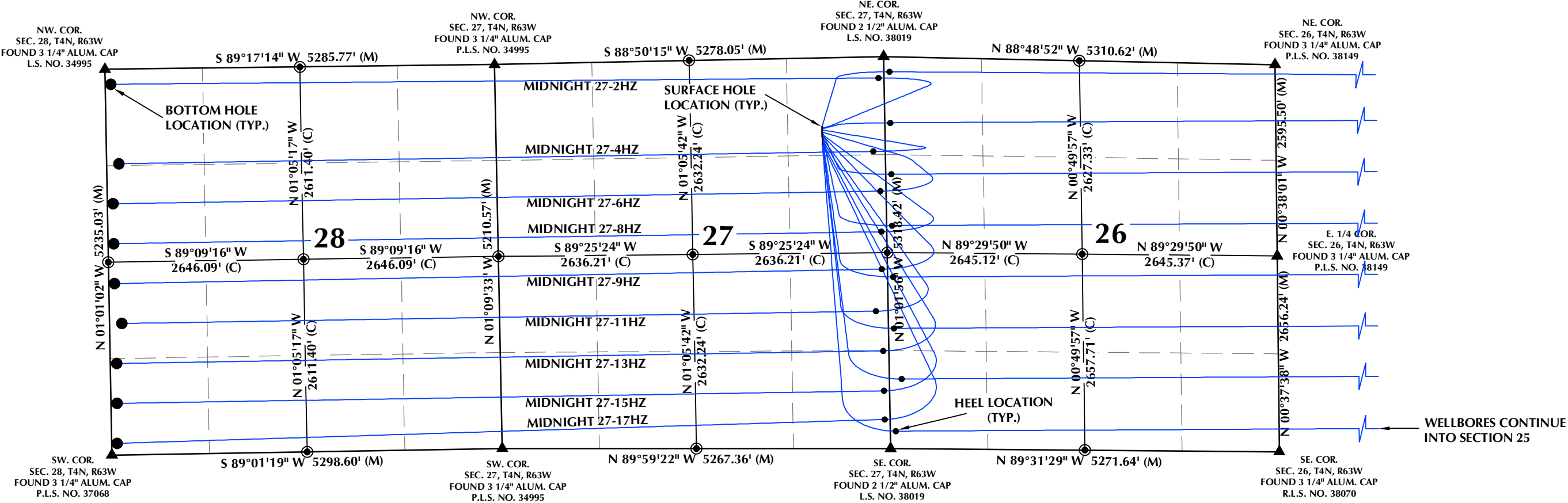
WELL PAD - MIDNIGHT 1-27HZ

DIRECTIONAL WELL PLAT (ECMC) / MULTI-WELL PLAN (OGED)
MIDNIGHT 27-1HZ, MIDNIGHT 27-2HZ,
MIDNIGHT 27-3HZ, MIDNIGHT 27-4HZ, MIDNIGHT 27-5HZ,
MIDNIGHT 27-6HZ, MIDNIGHT 27-7HZ, MIDNIGHT 27-8HZ,
MIDNIGHT 27-9HZ, MIDNIGHT 27-10HZ, MIDNIGHT 27-11HZ,
MIDNIGHT 27-12HZ, MIDNIGHT 27-13HZ, MIDNIGHT 27-14HZ,
MIDNIGHT 27-15HZ, MIDNIGHT 27-16HZ & MIDNIGHT 27-17HZ
LOCATED IN SECTIONS 25, 26, 27 & 28
T4N, R63W, 6TH P.M.
WELD COUNTY, COLORADO

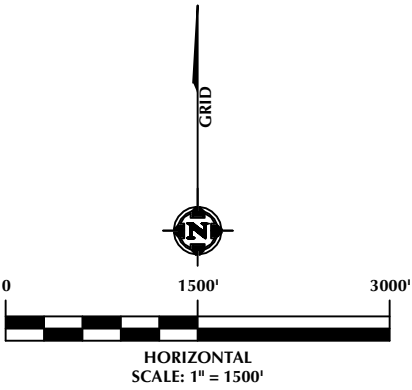
DRAFTED BY:	SJM	CHECKED BY:	RKF	SHEET NO: 1A 1A OF 1
DATE DRAFTED:	11/10/23	DATE SURVEYED:	9/27/23	
REVISED:		FILE NAME:	17-197	

K:\ANADARKO\2017\197_CERT_RANCH_T4N_R63W\PLANS\03_MIDNIGHT\MIDNIGHT.dwg, 11/7/2023 1:55:07 PM, smiller

DIRECTIONAL WELL PLAT (ECMC) / MULTI-WELL PLAN (OGED)
SECTIONS 25, 26, 27 & 28, T4N, R63W, 6TH P.M.



- NOTES:
- ▲ INDICATES SECTION CORNER.
 - INDICATES CALCULATED CORNER.
 - BASIS OF BEARINGS DERIVED FROM COLORADO COORDINATE SYSTEM OF 1983, NORTH ZONE.
 - ALL MEASURED DISTANCES ARE GRID.
 - COMBINED SCALE FACTOR: .99973176 CALCULATED FROM THE NW. CORNER OF SECTION 26, T4N, R63W.
 - WELL FOOTAGES ARE MEASURED AT RIGHT ANGLES TO THE SECTION LINES.



LOVELAND OFFICE
6706 North Franklin Avenue
Loveland, Colorado 80538
Phone 970-776-4331

SHERIDAN OFFICE
1095 Saberton Avenue
Sheridan, Wyoming 82801
Phone 307-674-0609

**Kerr-McGee Oil &
Gas Onshore LP**
1099 18th Street
Denver, Colorado 80202

WELL PAD - MIDNIGHT 1-27HZ			
DIRECTIONAL WELL PLAT (ECMC) / MULTI-WELL PLAN (OGED) MIDNIGHT 27-1HZ, MIDNIGHT 27-2HZ, MIDNIGHT 27-3HZ, MIDNIGHT 27-4HZ, MIDNIGHT 27-5HZ, MIDNIGHT 27-6HZ, MIDNIGHT 27-7HZ, MIDNIGHT 27-8HZ, MIDNIGHT 27-9HZ, MIDNIGHT 27-10HZ, MIDNIGHT 27-11HZ, MIDNIGHT 27-12HZ, MIDNIGHT 27-13HZ, MIDNIGHT 27-14HZ, MIDNIGHT 27-15HZ, MIDNIGHT 27-16HZ & MIDNIGHT 27-17HZ LOCATED IN SECTIONS 25, 26, 27 & 28 T4N, R63W, 6TH P.M. WELD COUNTY, COLORADO			
DRAFTED BY:	SJM	CHECKED BY:	RKF
DATE DRAFTED:	11/10/23	DATE SURVEYED:	9/27/23
REVISED:		FILE NAME:	17-197
			SHEET NO: 1B 1B OF 1

DIRECTIONAL WELL PLAT (ECMC) / MULTI-WELL PLAN (OGED)
SECTIONS 25, 26, 27 & 28, T4N, R63W, 6TH P.M.

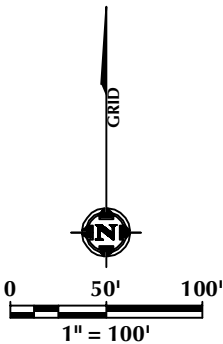
WELL NOTES:
MIDNIGHT 27-1HZ
SURFACE HOLE LOCATION: 934' FNL, 852' FEL (SEC. 27, T4N, R63W)
HEEL LOCATION: 205' FNL, 75' FWL (SEC. 26, T4N, R63W)
BOTTOM HOLE LOCATION: 220' FNL, 75' FEL (SEC. 25, T4N, R63W)
MIDNIGHT 27-2HZ
SURFACE HOLE LOCATION: 949' FNL, 852' FEL (SEC. 27, T4N, R63W)
HEEL LOCATION: 288' FNL, 75' FEL (SEC. 27, T4N, R63W)
BOTTOM HOLE LOCATION: 205' FNL, 75' FWL (SEC. 28, T4N, R63W)
MIDNIGHT 27-3HZ
SURFACE HOLE LOCATION: 964' FNL, 852' FEL (SEC. 27, T4N, R63W)
HEEL LOCATION: 897' FNL, 76' FWL (SEC. 26, T4N, R63W)
BOTTOM HOLE LOCATION: 798' FNL, 75' FEL (SEC. 25, T4N, R63W)
MIDNIGHT 27-4HZ
SURFACE HOLE LOCATION: 979' FNL, 852' FEL (SEC. 27, T4N, R63W)
HEEL LOCATION: 1284' FNL, 165' FEL (SEC. 27, T4N, R63W)
BOTTOM HOLE LOCATION: 1285' FNL, 165' FWL (SEC. 28, T4N, R63W)
MIDNIGHT 27-5HZ
SURFACE HOLE LOCATION: 994' FNL, 852' FEL (SEC. 27, T4N, R63W)
HEEL LOCATION: 1595' FNL, 75' FWL (SEC. 26, T4N, R63W)
BOTTOM HOLE LOCATION: 1494' FNL, 75' FEL (SEC. 25, T4N, R63W)
MIDNIGHT 27-6HZ
SURFACE HOLE LOCATION: 1009' FNL, 852' FEL (SEC. 27, T4N, R63W)
HEEL LOCATION: 1826' FNL, 75' FEL (SEC. 27, T4N, R63W)
BOTTOM HOLE LOCATION: 1826' FNL, 75' FWL (SEC. 28, T4N, R63W)

MIDNIGHT 27-7HZ
SURFACE HOLE LOCATION: 1024' FNL, 852' FEL (SEC. 27, T4N, R63W)
HEEL LOCATION: 2292' FNL, 75' FWL (SEC. 26, T4N, R63W)
BOTTOM HOLE LOCATION: 2191' FNL, 75' FEL (SEC. 25, T4N, R63W)
MIDNIGHT 27-8HZ
SURFACE HOLE LOCATION: 1039' FNL, 852' FEL (SEC. 27, T4N, R63W)
HEEL LOCATION: 2378' FNL, 75' FEL (SEC. 27, T4N, R63W)
BOTTOM HOLE LOCATION: 2368' FNL, 76' FWL (SEC. 28, T4N, R63W)
MIDNIGHT 27-9HZ
SURFACE HOLE LOCATION: 1054' FNL, 852' FEL (SEC. 27, T4N, R63W)
HEEL LOCATION: 2432' FSL, 75' FEL (SEC. 27, T4N, R63W)
BOTTOM HOLE LOCATION: 2324' FSL, 75' FWL (SEC. 28, T4N, R63W)
MIDNIGHT 27-10HZ
SURFACE HOLE LOCATION: 1069' FNL, 852' FEL (SEC. 27, T4N, R63W)
HEEL LOCATION: 2326' FSL, 75' FWL (SEC. 26, T4N, R63W)
BOTTOM HOLE LOCATION: 2423' FSL, 75' FEL (SEC. 25, T4N, R63W)
MIDNIGHT 27-11HZ
SURFACE HOLE LOCATION: 1084' FNL, 852' FEL (SEC. 27, T4N, R63W)
HEEL LOCATION: 1861' FSL, 165' FEL (SEC. 27, T4N, R63W)
BOTTOM HOLE LOCATION: 1781' FSL, 165' FWL (SEC. 28, T4N, R63W)
MIDNIGHT 27-12HZ
SURFACE HOLE LOCATION: 1099' FNL, 852' FEL (SEC. 27, T4N, R63W)
HEEL LOCATION: 1628' FSL, 75' FWL (SEC. 26, T4N, R63W)
BOTTOM HOLE LOCATION: 1726' FSL, 75' FEL (SEC. 25, T4N, R63W)

MIDNIGHT 27-13HZ
SURFACE HOLE LOCATION: 1114' FNL, 852' FEL (SEC. 27, T4N, R63W)
HEEL LOCATION: 1322' FSL, 75' FEL (SEC. 27, T4N, R63W)
BOTTOM HOLE LOCATION: 1240' FSL, 75' FWL (SEC. 28, T4N, R63W)
MIDNIGHT 27-14HZ
SURFACE HOLE LOCATION: 1129' FNL, 852' FEL (SEC. 27, T4N, R63W)
HEEL LOCATION: 942' FSL, 165' FWL (SEC. 26, T4N, R63W)
BOTTOM HOLE LOCATION: 1040' FSL, 165' FEL (SEC. 25, T4N, R63W)
MIDNIGHT 27-15HZ
SURFACE HOLE LOCATION: 1144' FNL, 852' FEL (SEC. 27, T4N, R63W)
HEEL LOCATION: 780' FSL, 75' FEL (SEC. 27, T4N, R63W)
BOTTOM HOLE LOCATION: 697' FSL, 75' FWL (SEC. 28, T4N, R63W)
MIDNIGHT 27-16HZ
SURFACE HOLE LOCATION: 1159' FNL, 852' FEL (SEC. 27, T4N, R63W)
HEEL LOCATION: 233' FSL, 74' FWL (SEC. 26, T4N, R63W)
BOTTOM HOLE LOCATION: 331' FSL, 75' FEL (SEC. 25, T4N, R63W)
MIDNIGHT 27-17HZ
SURFACE HOLE LOCATION: 1174' FNL, 852' FEL (SEC. 27, T4N, R63W)
HEEL LOCATION: 391' FSL, 75' FEL (SEC. 27, T4N, R63W)
BOTTOM HOLE LOCATION: 155' FSL, 75' FWL (SEC. 28, T4N, R63W)

WELL HEAD SPACING DETAIL

- 15' ● MIDNIGHT 27-1HZ
- 15' ● MIDNIGHT 27-2HZ
- 15' ● MIDNIGHT 27-3HZ
- 15' ● MIDNIGHT 27-4HZ
- 15' ● MIDNIGHT 27-5HZ
- 15' ● MIDNIGHT 27-6HZ
- 15' ● MIDNIGHT 27-7HZ
- 15' ● MIDNIGHT 27-8HZ
- 15' ● MIDNIGHT 27-9HZ
- 15' ● MIDNIGHT 27-10HZ
- 15' ● MIDNIGHT 27-11HZ
- 15' ● MIDNIGHT 27-12HZ
- 15' ● MIDNIGHT 27-13HZ
- 15' ● MIDNIGHT 27-14HZ
- 15' ● MIDNIGHT 27-15HZ
- 15' ● MIDNIGHT 27-16HZ
- 15' ● MIDNIGHT 27-17HZ



LOVELAND OFFICE
6706 North Franklin Avenue
Loveland, Colorado 80538
Phone 970-776-4331

SHERIDAN OFFICE
1095 Saberton Avenue
Sheridan, Wyoming 82801
Phone 307-674-0609

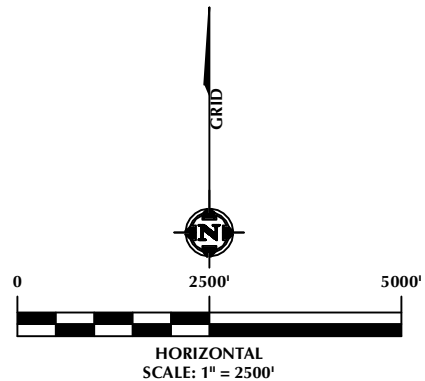
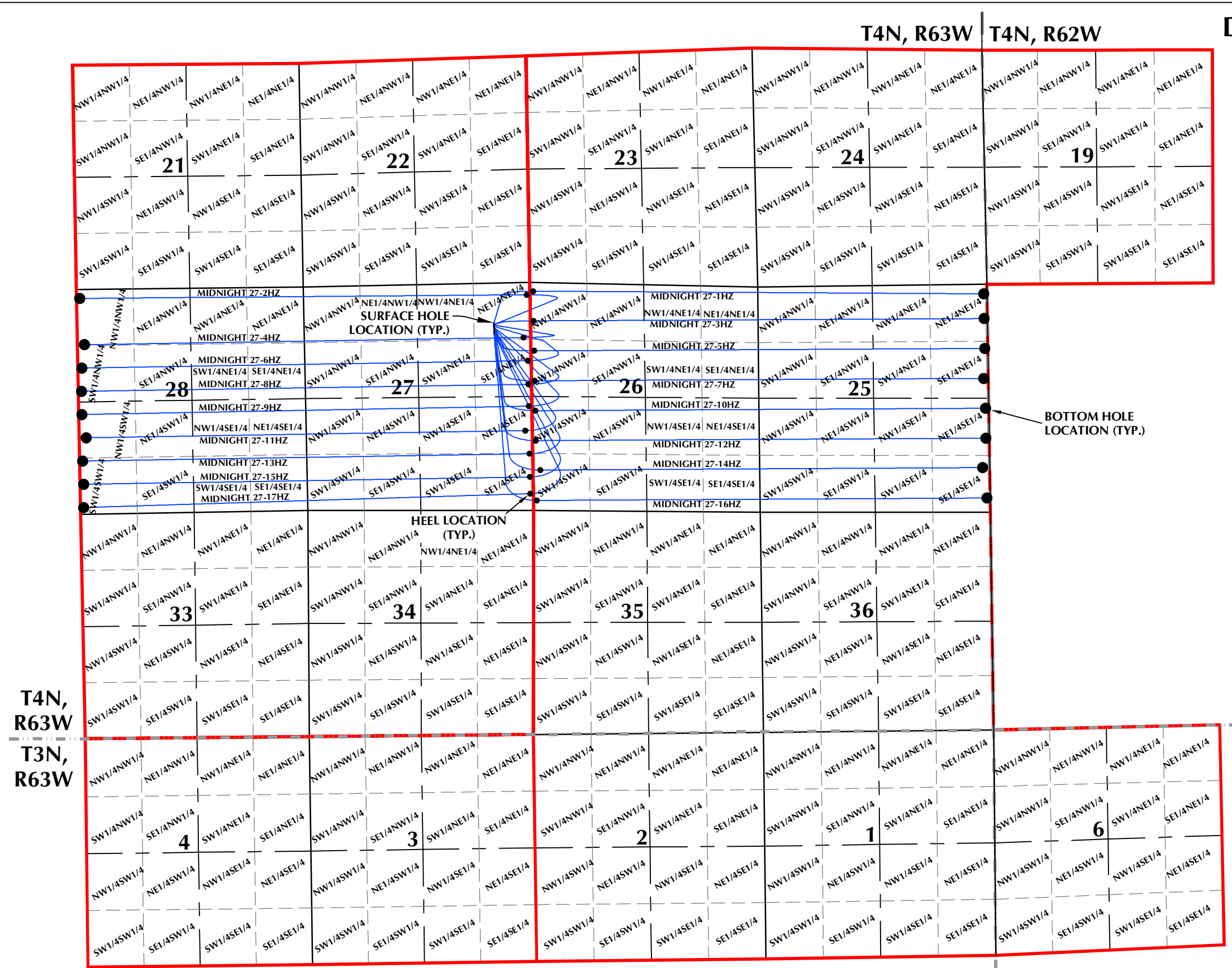
**Kerr-McGee Oil &
Gas Onshore LP**
1099 18th Street
Denver, Colorado 80202

WELL PAD - MIDNIGHT 1-27HZ

DIRECTIONAL WELL PLAT (ECMC) / MULTI-WELL PLAN (OGED)
MIDNIGHT 27-1HZ, MIDNIGHT 27-2HZ,
MIDNIGHT 27-3HZ, MIDNIGHT 27-4HZ, MIDNIGHT 27-5HZ,
MIDNIGHT 27-6HZ, MIDNIGHT 27-7HZ, MIDNIGHT 27-8HZ,
MIDNIGHT 27-9HZ, MIDNIGHT 27-10HZ, MIDNIGHT 27-11HZ,
MIDNIGHT 27-12HZ, MIDNIGHT 27-13HZ, MIDNIGHT 27-14HZ,
MIDNIGHT 27-15HZ, MIDNIGHT 27-16HZ & MIDNIGHT 27-17HZ
LOCATED IN SECTIONS 25, 26, 27 & 28
T4N, R63W, 6TH P.M.
WELD COUNTY, COLORADO

DRAFTED BY:	SJM	CHECKED BY:	RKF	SHEET NO:
DATE DRAFTED:	11/10/23	DATE SURVEYED:	9/27/23	1C
REVISED:		FILE NAME:	17-197	1C OF 1

DIRECTIONAL WELL PLAT (ECMC) /
MULTI-WELL PLAN (OGED)
SECTIONS 25, 26, 27 & 28
T4N, R63W, 6TH P.M.



WELL PAD - MIDNIGHT 1-27HZ

DIRECTIONAL WELL PLAT (ECMC) / MULTI-WELL PLAN (OGED)
MIDNIGHT 27-1HZ, MIDNIGHT 27-2HZ,
MIDNIGHT 27-3HZ, MIDNIGHT 27-4HZ, MIDNIGHT 27-5HZ,
MIDNIGHT 27-6HZ, MIDNIGHT 27-7HZ, MIDNIGHT 27-8HZ,
MIDNIGHT 27-9HZ, MIDNIGHT 27-10HZ, MIDNIGHT 27-11HZ,
MIDNIGHT 27-12HZ, MIDNIGHT 27-13HZ, MIDNIGHT 27-14HZ,
MIDNIGHT 27-15HZ, MIDNIGHT 27-16HZ & MIDNIGHT 27-17HZ
LOCATED IN SECTIONS 25, 26, 27 & 28
T4N, R63W, 6TH P.M.
WELD COUNTY, COLORADO

- LEGEND:**
- DSU BOUNDARY
 - TOWNSHIP/RANGE LINE
 - WELLBORE TRAJECTORY
 - HEEL LOCATION
 - BOTTOM HOLE LOCATION



LOVELAND OFFICE
6706 North Franklin Avenue
Loveland, Colorado 80538
Phone 970-776-4331

SHERIDAN OFFICE
1095 Saberton Avenue
Sheridan, Wyoming 82801
Phone 307-674-0609

**Kerr-McGee Oil &
Gas Onshore LP**
1099 18th Street
Denver, Colorado 80202

DRAFTED BY:	SJM	CHECKED BY:	RKF	SHEET NO:
DATE DRAFTED:	11/10/23	DATE SURVEYED:	9/27/23	1D
REVISED:		FILE NAME:	17-197	1D OF 1