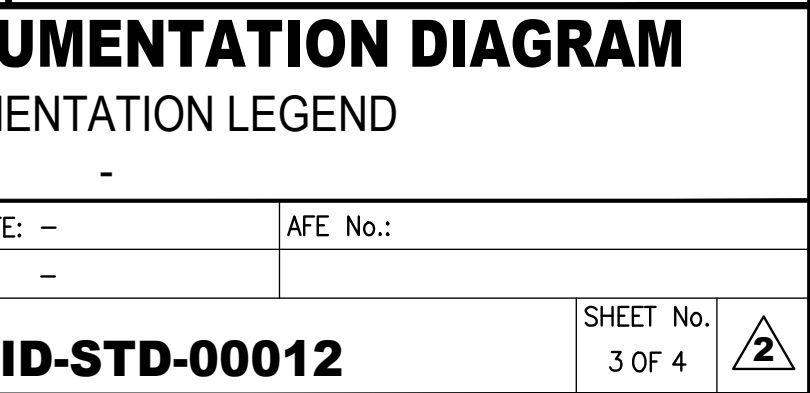
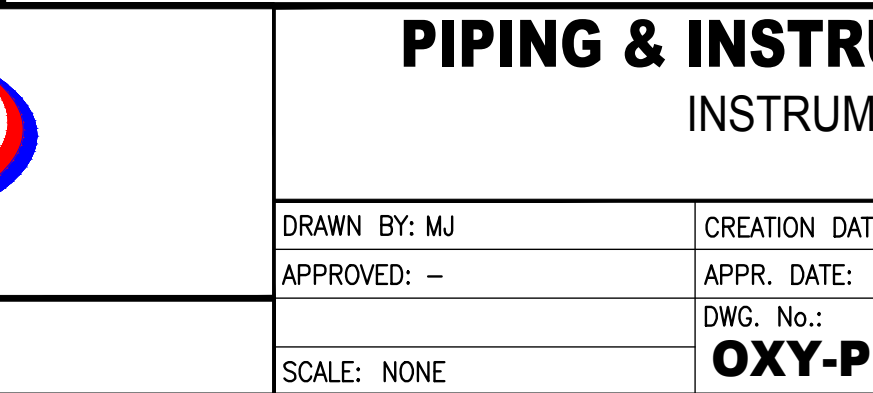
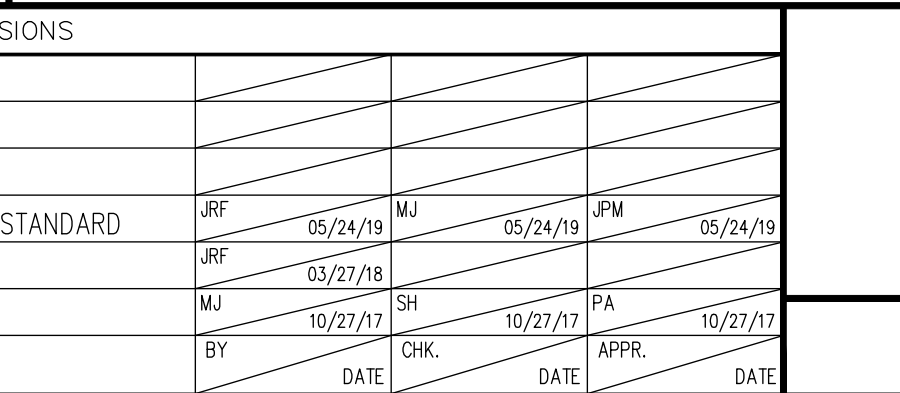
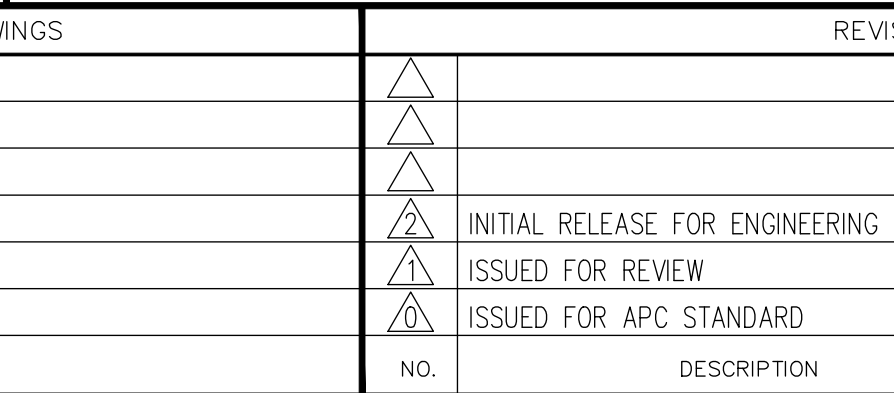
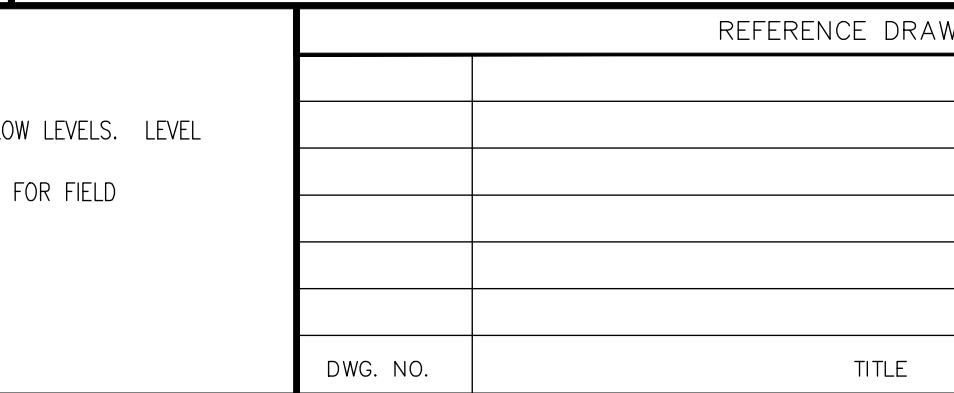
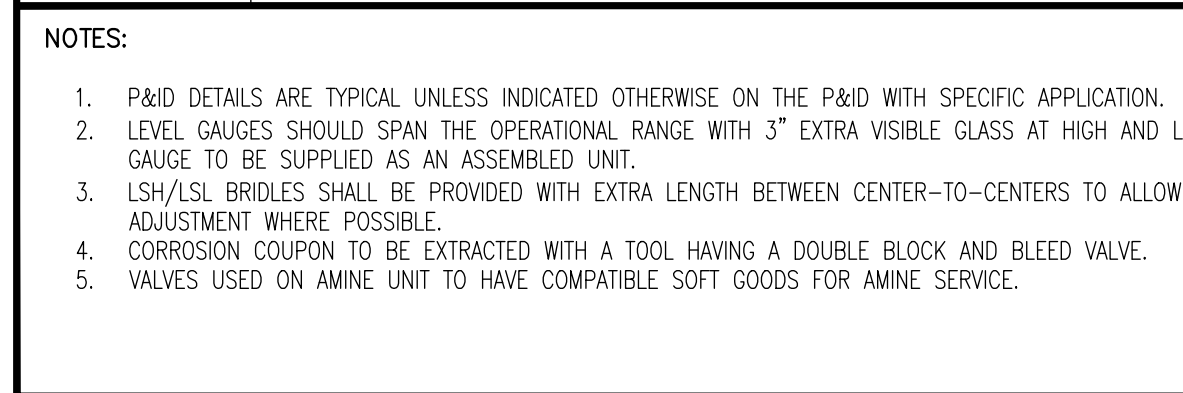
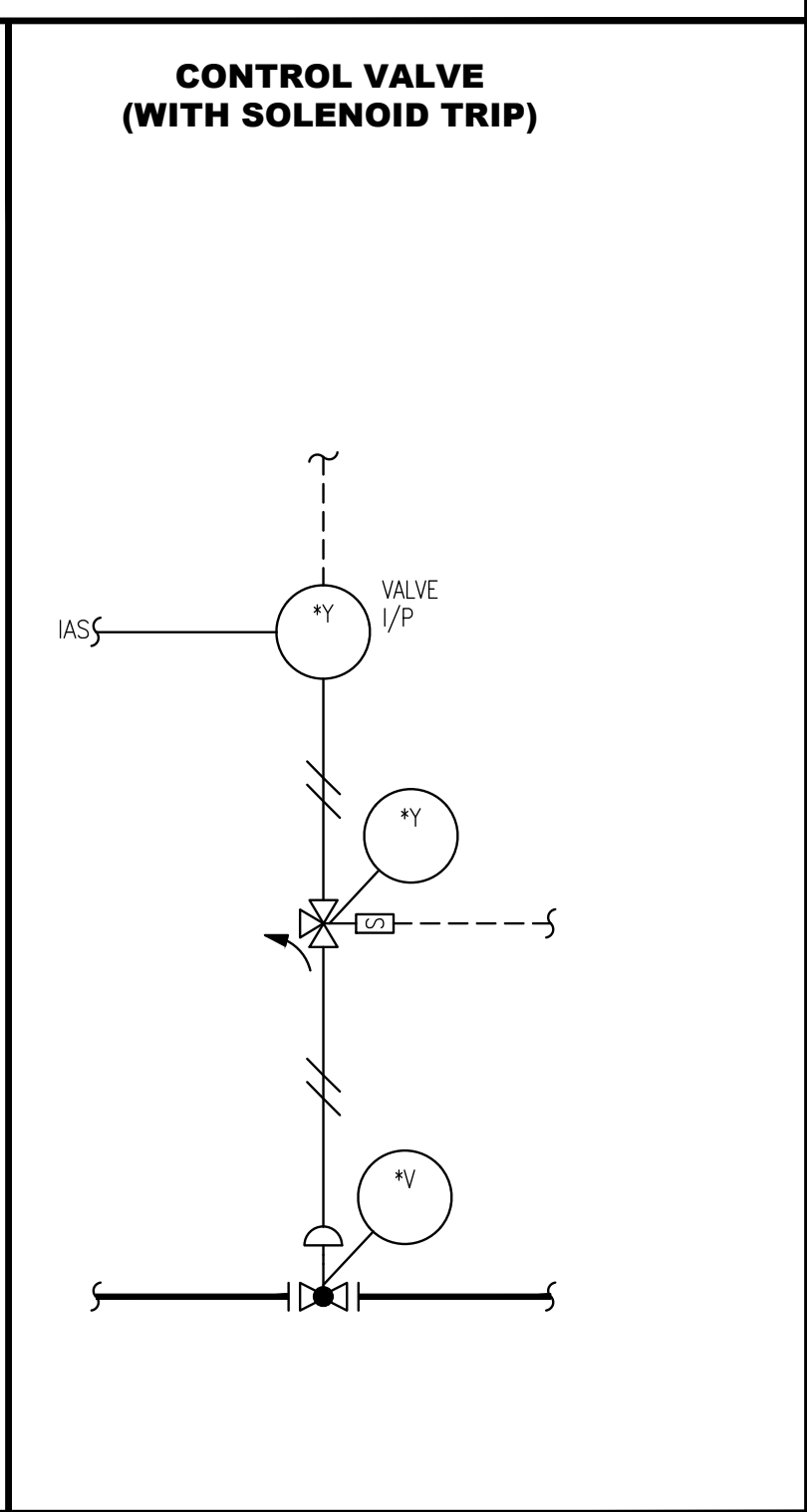
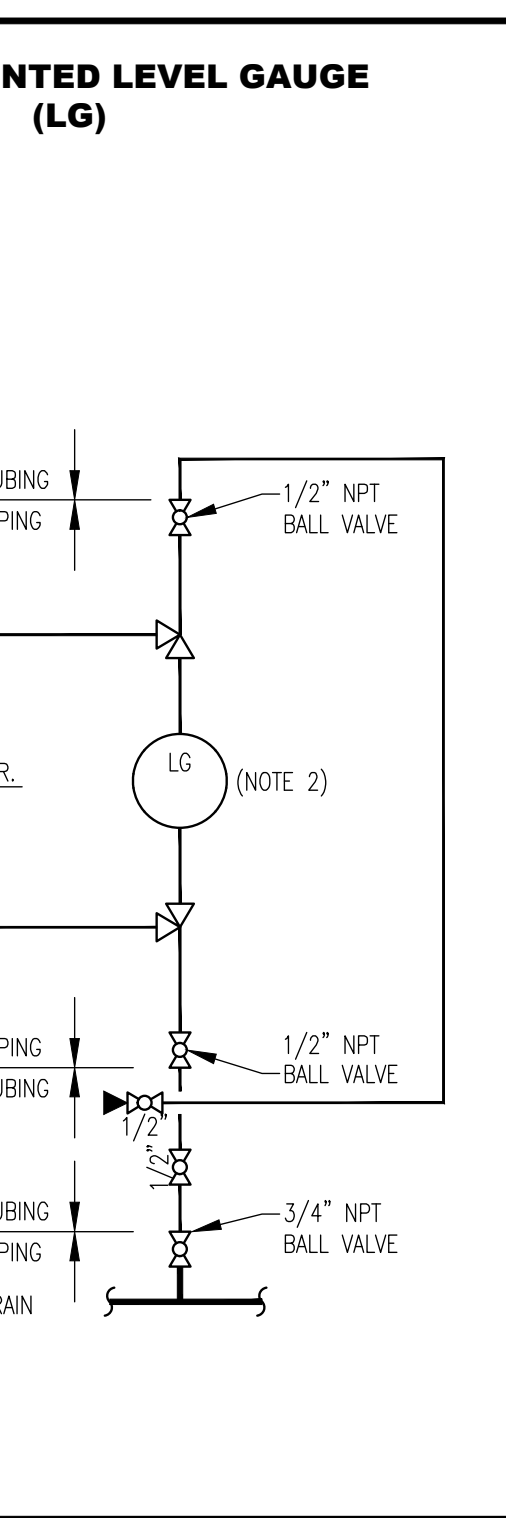
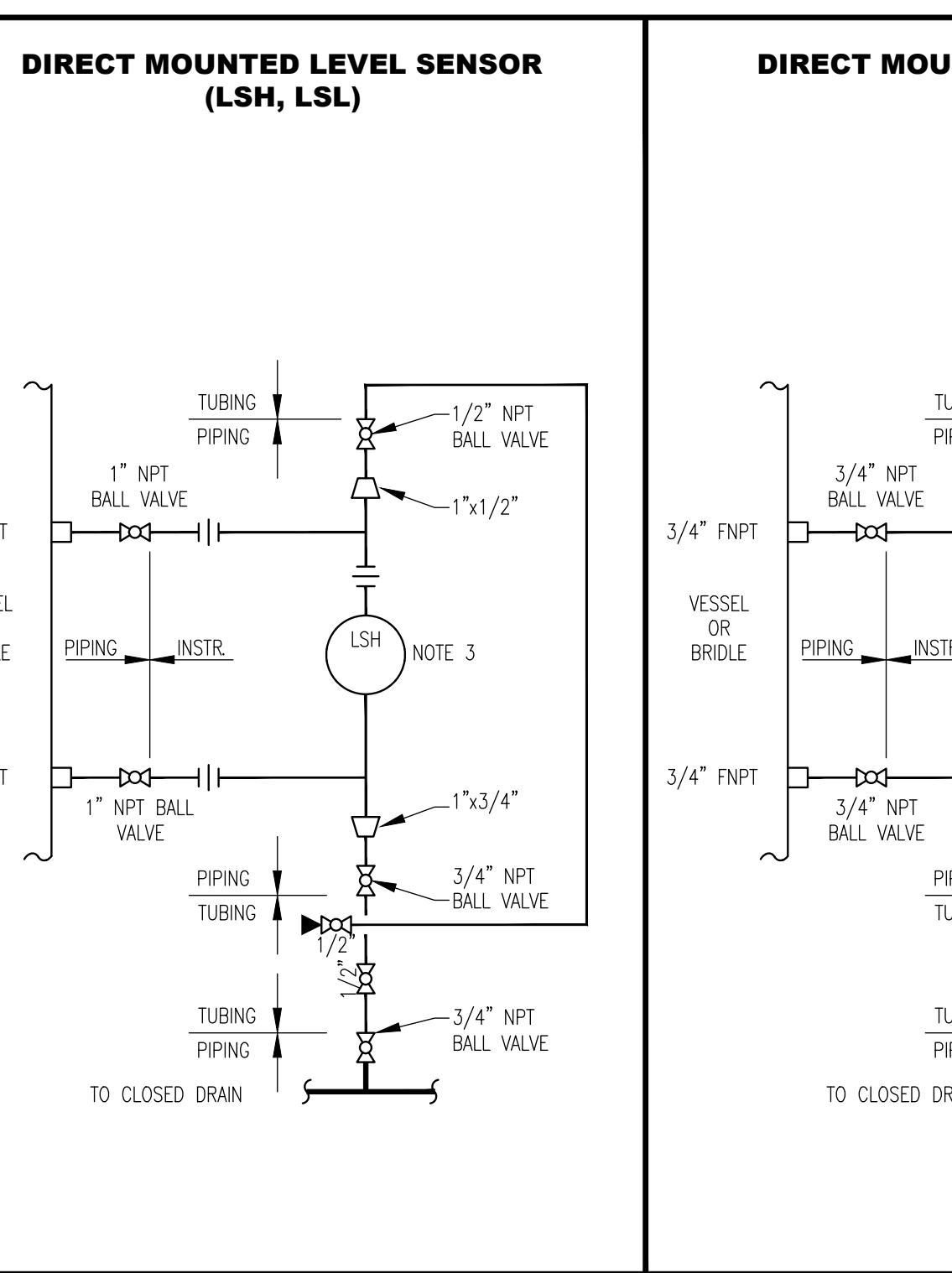
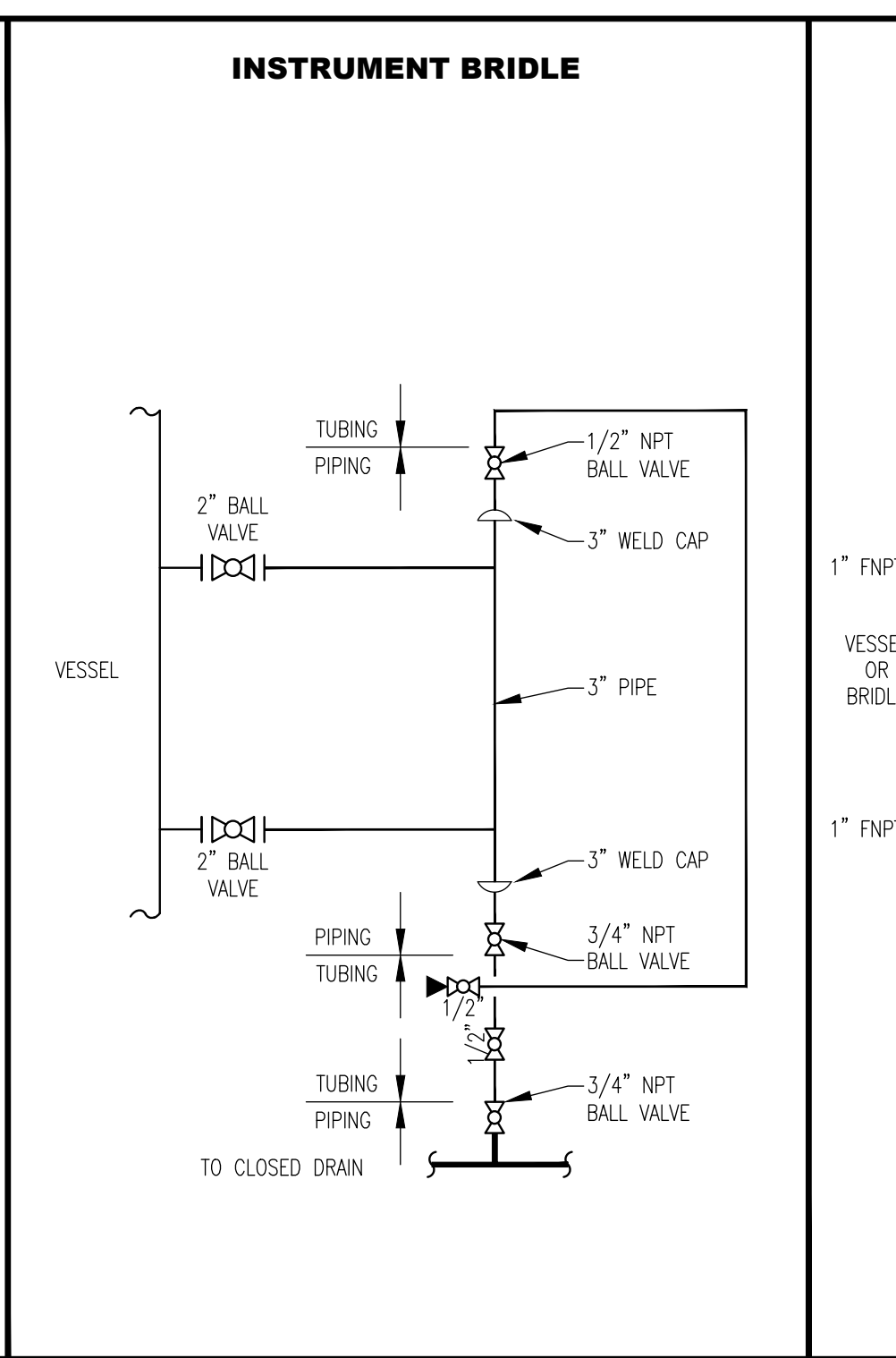
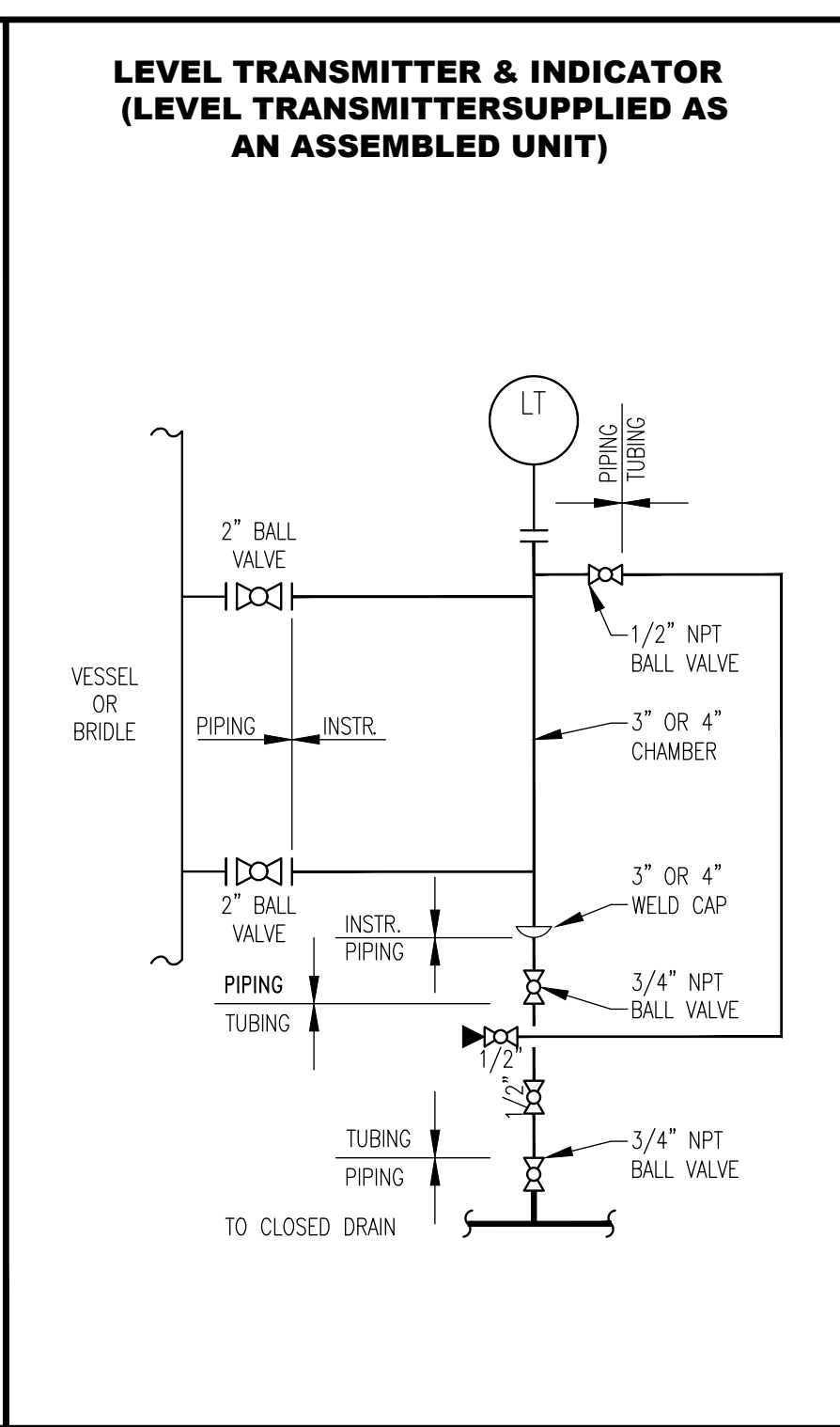
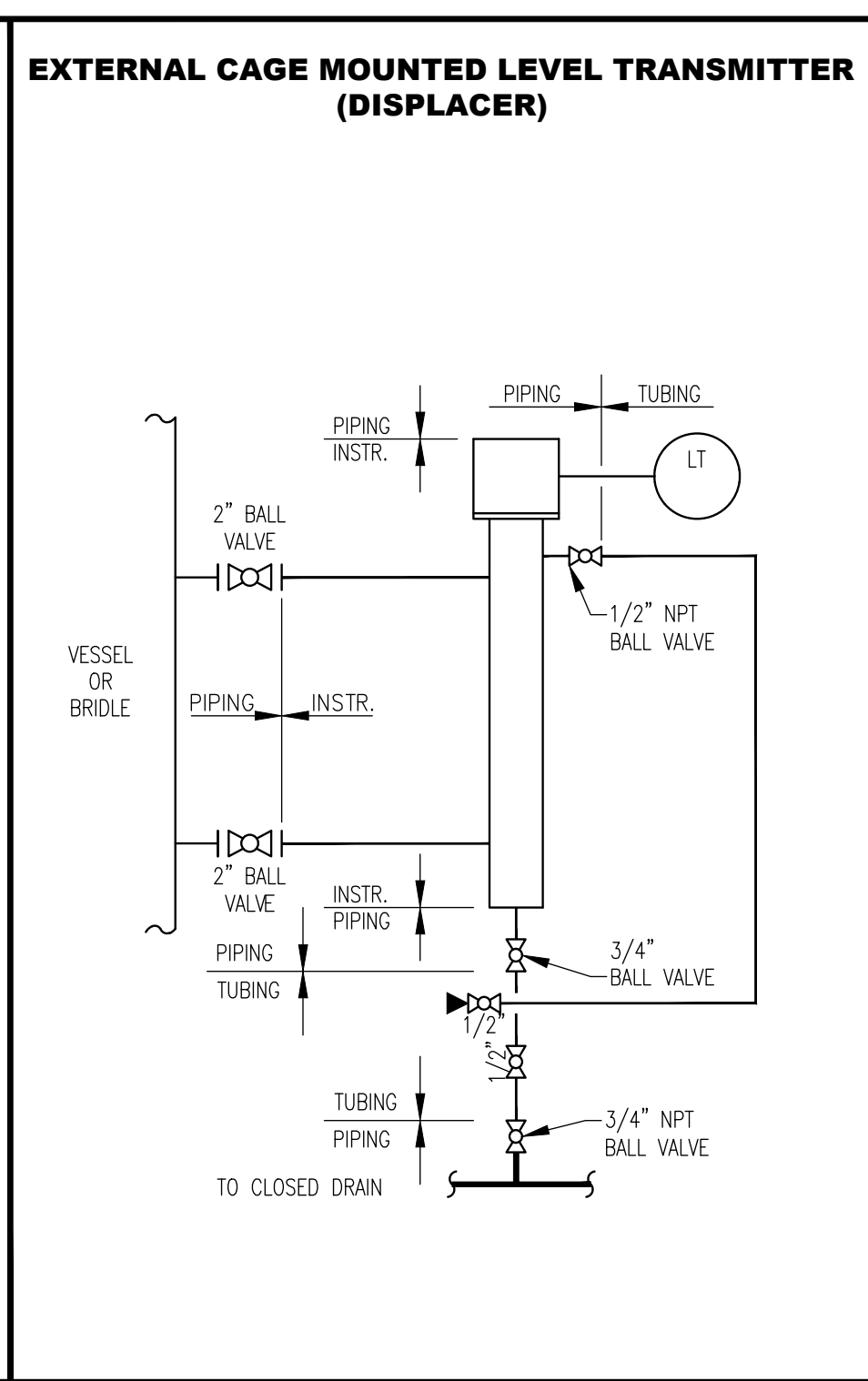
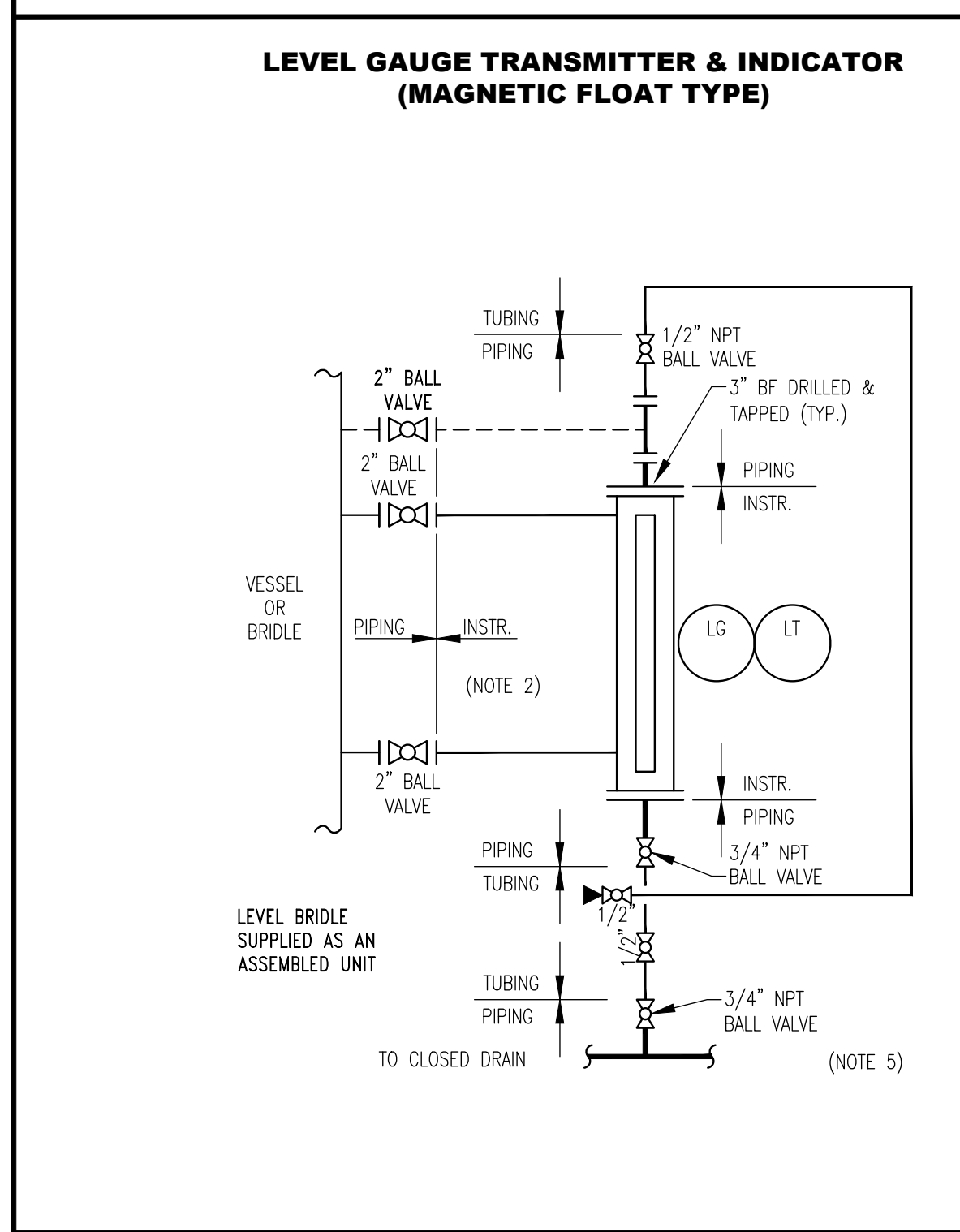


THIS DRAWING AND THE DESIGN IT COVERS ARE CONFIDENTIAL AND REMAIN THE PROPERTY OF ANADARKO PETROLEUM CORPORATION AND SHALL NOT BE DISCLOSED TO OTHERS OR REPRODUCED IN ANY MANNER OR USED FOR ANY PURPOSE WHATSOEVER EXCEPT BY WRITTEN PERMISSION BY THE OWNER.

EQUIPMENT NUMBERING STANDARD		PIPE LINE NUMBERING STANDARD		PIPING SYMBOLS																																																																																																																											
<div><div><div><div></div><div></div><div></div><div></div></div><div><div></div><div></div><div></div><div></div></div><div><div></div><div></div><div></div><div></div></div></div><div>EQUIPMENT IDENTIFICATION CODE</div><div>AREA NUMBER</div><div>TRAIN NUMBER(*)</div><div>EQUIPMENT ID</div></div> <div>*TRAIN NUMBER (USE 0 FOR COMMON EQUIPMENT)(OR COMPRESSOR UNIT NUMBER – CTF SITES ONLY) INSTRUMENTATION NUMBERS – MATCH EQUIPMENT ID AND INCREMENT NUMERICALLY ONLY. ELECTRICAL NUMBERS – MATCH EQUIPMENT ID AND INCREMENT NUMERICALLY ONLY. ALPHAS ONLY AS APPROVED BY APC ENGINEERING.</div>		<div><div><div><div></div><div></div><div></div><div></div></div><div><div></div><div></div><div></div><div></div></div><div><div></div><div></div><div></div><div></div></div></div><div>PIPE SIZE</div><div>SERVICE IDENTIFICATION</div><div>SEQUENTIAL NUMBER</div></div> <div>INSULATION THICKNESS</div> <div>TRACING TYPE</div> <div>INSULATION TYPE</div> <div>PIPE SPECIFICATION</div>		<div>FLOW SHEET LINE TYPES</div> <div>MAJOR</div> <div>MAJOR SECONDARY</div> <div>MINOR</div> <div>MINOR SECONDARY</div> <div>SKID LIMITS</div>		<div>VALVES</div> <div>BALL VALVE</div> <div>GATE VALVE</div> <div>GLOBE VALVE</div> <div>PLUG VALVE</div> <div>CHECK VALVE</div> <div>CHECK VALVE – PISTON</div> <div>NEEDLE VALVE</div> <div>BUTTERFLY VALVE</div> <div>INLINE CHOKE VALVE</div> <div>ANGLE CHOKE</div> <div>DIAPHRAGM VALVE</div> <div>GAUGE VALVE</div> <div>BLOCK & BLEED VALVE</div> <div>EXCESS FLOW VALVE</div> <div>ANGLE VALVE</div> <div>CONVENTIONAL PRESSURE RELIEF VALVE</div> <div>PILOT RELIEF VALVE</div> <div>ANGLE VALVE w/ HANDLE</div> <div>DIAPHRAGM GATE VALVE</div> <div>DIAPHRAGM BALL VALVE</div> <div>PRESSURE REGULATOR GATE VALVE</div> <div>PRESSURE REGULATOR BALL VALVE</div> <div>PISTON OPERATED GATE VALVE</div> <div>PISTON OPERATED BALL VALVE</div> <div>SOLENOID GATE VALVE</div> <div>SOLENOID BALL VALVE</div> <div>ANGLE DIAPHRAGM VALVE</div> <div>3-WAY DIAPHRAGM VALVE</div> <div>3-WAY SOLENOID VALVE</div> <div>3-WAY SPRING OPPOSED VALVE</div> <div>3-WAY THERMOSTATIC VALVE</div> <div>3-WAY VALVE</div> <div>3-WAY VALVE w/ HANDLE</div> <div>3-WAY RELIEF VALVE</div>		<div>FLANGES</div> <div>BLIND FLANGE OR LINE TERMINATION</div> <div>UNION</div> <div>SENIOR/JUNIOR ORIFICE METER</div> <div>ORIFICE</div> <div>ORIFICE CLOSED</div> <div>ORIFICE PADDLE</div> <div>FLOW TRANSMITTER WITH GATE VALVE</div> <div>FLOW TRANSMITTER WITH BALL VALVE</div> <div>FLOW TRANSMITTER WITH NEEDLE VALVE</div> <div>BLEED RING WITH GATE VALVE</div> <div>BLEED RING WITH BALL VALVE</div> <div>SPECTACLE BLIND OPEN POSITION</div> <div>SPECTACLE BLIND CLOSED POSITION</div> <div>PADDLE BLIND CLOSED POSITION</div> <div>PADDLE BLIND OPEN POSITION</div> <div>NOZZLES</div> <div>COUPLING</div> <div>FRONT VIEW CONNECTION</div> <div>NOZZLE BLUNDED</div> <div>NOZZLE FLANGED</div> <div>MANWAY SINGLE LINE (SIDE VIEW)</div> <div>MANWAY (SIDE VIEW)</div> <div>MANWAY (FRONT VIEW)</div> <div>TANK CLEANOUT</div> <div>EQUIPMENT NOZZLE CALLOUT</div>		<div>INLINES</div> <div>Y" TYPE STRAINER</div> <div>Y" TYPE STRAINER WITH GATE VALVE</div> <div>Y" TYPE STRAINER WITH BALL VALVE</div> <div>INSULATION (SEE TABLE)</div> <div>INSULATION WITH HEAT TRACE (SEE TABLE)</div> <div>INSULATION WITH GLYCOL HEAT TRACE</div> <div>EQUIPMENT INSULATION</div> <div>TURBINE METER</div> <div>POSITIVE DISPLACEMENT METER</div> <div>MAGNETIC FLOW METER</div> <div>ULTRASONIC METER</div> <div>INLINE MIXER</div> <div>BASKET STRAINER</div> <div>FILTER</div> <div>INLINE STRAINER</div> <div>CONE STRAINER</div> <div>START UP STRAINER (WITCH HAT)</div> <div>EXPANSION JOINT</div> <div>ROTAMETER FLOW INDICATOR</div> <div>V-CONE METER</div> <div>VENTURI TUBE OR FLOW NOZZLE</div> <div>VENTURI TUBE WITH TAPS</div> <div>STRAIGHTENING VANES</div> <div>FLOW CONDITIONER</div> <div>VORTEX SENSOR</div> <div>ANNUBAR</div> <div>MASS FLOW CORIOLIS METER</div> <div>CORIOLIS METER</div> <div>RUPTURE DISK</div> <div>RUPTURE DISK (PRESSURE)</div> <div>RUPTURE DISK (VACUUM)</div> <div>EXCESS FLOW PREVENTER/MIXER</div> <div>DIAPHRAGM SEAL</div> <div>CHEMICAL SEAL</div> <div>PITOT TUBE OR PITOT VENTURI TUBE</div> <div>FLOW CONDITIONER</div>		<div>MISCELLANEOUS</div> <div>DRESSER COUPLING</div> <div>MATERIAL, AG/BG, INSULATION, PIPING SPEC OR SOW CHANGE</div> <div>FLEXIBLE HOSE FLANGED</div> <div>FLEXIBLE HOSE</div> <div>TRUCK CONNECTION/ BOW & CAP</div> <div>AGITATOR</div> <div>TRUCK (BACK VIEW)</div> <div>TRUCK (SIDE VIEW)</div> <div>RAILCAR</div> <div>Y-TRAP OPEN DRAIN</div> <div>LIQUID SEAL X"=HEIGHT</div> <div>VENT</div> <div>TIE IN TO EXISTING PIPING OR PIPING BY OTHERS</div> <div>SPECIALITY ITEM</div> <div>INSULATING FLANGE KIT</div> <div>CORROSION COUPON</div> <div>PROCESS STREAM FLOW</div> <div>FLAME ARRESTOR</div> <div>MIST PAD OR MIST ELIMINATOR</div> <div>VORTEX BREAKER</div> <div>EJECTOR OR EDUCTOR</div> <div>SLOPE POINTED IN DOWNHILL SIDE</div> <div>PLUG</div> <div>BULL PLUG</div> <div>CAP WELDED/PIPE/ LINE OR TERMINATION</div> <div>CAP THREADED</div> <div>INSTRUMENT BREAK</div> <div>VENT TO ATMOS</div> <div>VENT WITH BUG SCREEN</div> <div>PIG PASSAGE INDICATOR (PIG SIG)</div>																																																																																																																			
<div>EQUIPMENT IDENTIFICATION CODE</div> <div>AC-#### AIR COOLED FIN FAN</div> <div>C-#### COMPRESSOR</div> <div>E-#### EXCHANGER</div> <div>F-#### FILTER</div> <div>H-#### FIRED HEATERS</div> <div>M-#### MOTOR</div> <div>P-#### PUMP</div> <div>R-#### REACTOR</div> <div>T-#### TOWER</div> <div>TK-#### TANK ATMOSPHERE</div> <div>V-#### VESSEL, PROCESS</div> <div>VS-#### VESSEL, STORAGE</div> <div>FL-#### SPECIALTY I.E., VENT STACK, FLARE, INCINERATOR, ECD</div> <div>TO-#### THERMAL OXIDIZER</div> <div>X-#### MISC. EQUIPMENT</div> <div>EQUIPMENT NUMBERING SYSTEM</div> <div>COMPRESSOR STATIONS & OIL PUMPING FACILITIES</div> <table><tr><th>AREA NUMBERS</th><th>AREA REFERENCED</th><th>TYPICAL EQUIPMENT</th></tr><tr><td>10000</td><td>INLET GAS AREA</td><td>SLUG CATCHERS & SEPARATORS</td></tr><tr><td>20000</td><td>CRUDE OIL TRANSFER EQUIPMENT</td><td>LINE HEATERS, PUMPS & SURGE VESSELS</td></tr><tr><td>30000</td><td>CONDENSATE HANDLING</td><td>PUMPS, WATER SEPARATION & SURGE/STORAGE</td></tr><tr><td>40000</td><td>COMPRESSION</td><td>ENGINE/COMP. SKID EQUIP., COOLERS, ON-SKID SEPARATORS</td></tr><tr><td>50000</td><td>DISCHARGE SEPARATION, DEHYDRATION</td><td>DISCHARGE SEPARATORS, FILTERS & DEHYDRATION EQUIP.</td></tr><tr><td>60000</td><td>AMINE SYSTEM</td><td>CONTACTOR, REGEN SYSTEM & FILTERS</td></tr><tr><td>70000</td><td>OUTLET AREA</td><td>GAS METERS, LACTS, PUMPS & STORAGE</td></tr><tr><td>80000</td><td>SWD</td><td>TANKS & PUMPS</td></tr><tr><td>90000</td><td>FLARE & UTILITIES</td><td></td></tr></table> <div>OIL STABILIZATION FACILITIES</div> <table><tr><th>AREA NUMBERS</th><th>AREA REFERENCED</th><th>TYPICAL EQUIPMENT</th></tr><tr><td>10000</td><td>INLET AREA</td><td>SLUG CATCHERS, SURGE/SEPARATOR VESSELS, LACTS & INLET HEATERS</td></tr><tr><td>20000</td><td>-</td><td>-</td></tr><tr><td>30000</td><td>PROCESS EQUIPMENT</td><td>VESSELS, TOWERS, EXCHANGERS, REFLUX SYSTEM</td></tr><tr><td>40000</td><td>COMPRESSION</td><td>COMPRESSORS, AFTERCOOLERS, COMPRESSOR ASSOCIATED VESSELS</td></tr><tr><td>50000</td><td>NGL STORAGE AND LACT</td><td>STORAGE VESSELS, PUMPS, METERS, LP GAS METERS</td></tr><tr><td>60000</td><td>PRODUCT COOLING</td><td>HEAT EXCHANGERS, CHILLERS, PUMPS, REFRIGERANT COMPRESSORS</td></tr><tr><td>70000</td><td>OUTLET AREA</td><td>OIL BOOSTER PUMPS, OIL PIPELINE PUMPS, OIL LACT</td></tr><tr><td>80000</td><td>HEAT MEDIUM SYSTEM</td><td>HEATERS, HM PUMPS, FILTERS</td></tr><tr><td>90000</td><td>FLARE & UTILITIES</td><td>FLARE, KNOCKOUTS, ECD'S, T.O., AIR COMPRESSORS, DRAINS, FUEL GAS</td></tr></table> <div>GAS PLANTS</div> <table><tr><th>AREA NUMBERS</th><th>AREA REFERENCED</th><th>TYPICAL EQUIPMENT</th></tr><tr><td>10000</td><td>INLET GAS AREA</td><td>SLUG CATCHERS & SEPARATORS</td></tr><tr><td>20000</td><td>CRUDE OIL TRANSFER EQUIPMENT</td><td>LINE HEATERS, PUMPS & SURGE VESSELS</td></tr><tr><td>30000</td><td>CONDENSATE HANDLING</td><td>PUMPS, WATER SEPARATION & SURGE/STORAGE</td></tr><tr><td>40000</td><td>COMPRESSION</td><td>ENGINE/COMP. SKID EQUIP., COOLERS, ON-SKID SEPARATORS</td></tr><tr><td>50000</td><td>DISCHARGE SEPARATION, DEHYDRATION</td><td>DISCHARGE SEPARATORS, FILTERS & DEHYDRATION EQUIP.</td></tr><tr><td>60000</td><td>AMINE SYSTEM</td><td>CONTACTOR, REGEN SYSTEM & FILTERS</td></tr><tr><td>70000</td><td>OUTLET AREA</td><td>GAS METERS, LACTS, PUMPS & STORAGE</td></tr><tr><td>80000</td><td>SWD</td><td>TANKS & PUMPS</td></tr><tr><td>90000</td><td>FLARE & UTILITIES</td><td></td></tr></table> <div>PRODUCTION FACILITIES</div> <table><tr><th>AREA NUMBERS</th><th>AREA REFERENCED</th><th>TYPICAL EQUIPMENT</th></tr><tr><td>10000</td><td>WELL HEADS</td><td>WELL HEADS & METHANOL TANKS</td></tr><tr><td>20000</td><td>INLET AREA</td><td>SEPARATORS, BURNER UNITS, BURNER MANAGEMENT, FUEL SCRUBBERS</td></tr><tr><td>30000</td><td>OIL SYSTEM</td><td>BULK SEPARATORS, VAPOR RECOVERY TOWERS & LACTS</td></tr><tr><td>40000</td><td>GAS SYSTEM</td><td>GAS SCRUBBERS, DEHYs, AMINE & GAS METERS</td></tr><tr><td>50000</td><td>FLARE SYSTEMS</td><td>FLARES, VENT & PURGE SYSTEMS, ECDs</td></tr><tr><td>60000</td><td>STORAGE AREA</td><td>OIL TANKS, WATER TANKS, RECIRC PUMPS</td></tr><tr><td>70000</td><td>UTILITIES</td><td>AIR COMPRESSORS, GENERATORS</td></tr><tr><td>80000</td><td>GAS COMPRESSORS</td><td>VRUS & GAS COMPRESSORS</td></tr><tr><td>90000</td><td>WATER TRAIN</td><td>SWD PUMPS & WATER METERS</td></tr></table> <div>P&ID NUMBERING STANDARD</div> <div><div><div><div></div><div></div><div></div><div></div></div><div><div></div><div></div><div></div><div></div></div><div><div></div><div></div><div></div><div></div></div></div><div>FUNCTIONAL LOCATION NUMBER</div><div>DRAWING TYPE</div><div>P&ID DRAWING NUMBERS(*)</div></div> <div>*P&ID DRAWING NUMBERS ARE BASED OFF OF THE SITE/EQUIPMENT AREA NUMBERS. (SEE EQUIPMENT IDENTIFICATION CODE AND NUMBERING SYSTEM)</div>		AREA NUMBERS	AREA REFERENCED	TYPICAL EQUIPMENT	10000	INLET GAS AREA	SLUG CATCHERS & SEPARATORS	20000	CRUDE OIL TRANSFER EQUIPMENT	LINE HEATERS, PUMPS & SURGE VESSELS	30000	CONDENSATE HANDLING	PUMPS, WATER SEPARATION & SURGE/STORAGE	40000	COMPRESSION	ENGINE/COMP. SKID EQUIP., COOLERS, ON-SKID SEPARATORS	50000	DISCHARGE SEPARATION, DEHYDRATION	DISCHARGE SEPARATORS, FILTERS & DEHYDRATION EQUIP.	60000	AMINE SYSTEM	CONTACTOR, REGEN SYSTEM & FILTERS	70000	OUTLET AREA	GAS METERS, LACTS, PUMPS & STORAGE	80000	SWD	TANKS & PUMPS	90000	FLARE & UTILITIES		AREA NUMBERS	AREA REFERENCED	TYPICAL EQUIPMENT	10000	INLET AREA	SLUG CATCHERS, SURGE/SEPARATOR VESSELS, LACTS & INLET HEATERS	20000	-	-	30000	PROCESS EQUIPMENT	VESSELS, TOWERS, EXCHANGERS, REFLUX SYSTEM	40000	COMPRESSION	COMPRESSORS, AFTERCOOLERS, COMPRESSOR ASSOCIATED VESSELS	50000	NGL STORAGE AND LACT	STORAGE VESSELS, PUMPS, METERS, LP GAS METERS	60000	PRODUCT COOLING	HEAT EXCHANGERS, CHILLERS, PUMPS, REFRIGERANT COMPRESSORS	70000	OUTLET AREA	OIL BOOSTER PUMPS, OIL PIPELINE PUMPS, OIL LACT	80000	HEAT MEDIUM SYSTEM	HEATERS, HM PUMPS, FILTERS	90000	FLARE & UTILITIES	FLARE, KNOCKOUTS, ECD'S, T.O., AIR COMPRESSORS, DRAINS, FUEL GAS	AREA NUMBERS	AREA REFERENCED	TYPICAL EQUIPMENT	10000	INLET GAS AREA	SLUG CATCHERS & SEPARATORS	20000	CRUDE OIL TRANSFER EQUIPMENT	LINE HEATERS, PUMPS & SURGE VESSELS	30000	CONDENSATE HANDLING	PUMPS, WATER SEPARATION & SURGE/STORAGE	40000	COMPRESSION	ENGINE/COMP. SKID EQUIP., COOLERS, ON-SKID SEPARATORS	50000	DISCHARGE SEPARATION, DEHYDRATION	DISCHARGE SEPARATORS, FILTERS & DEHYDRATION EQUIP.	60000	AMINE SYSTEM	CONTACTOR, REGEN SYSTEM & FILTERS	70000	OUTLET AREA	GAS METERS, LACTS, PUMPS & STORAGE	80000	SWD	TANKS & PUMPS	90000	FLARE & UTILITIES		AREA NUMBERS	AREA REFERENCED	TYPICAL EQUIPMENT	10000	WELL HEADS	WELL HEADS & METHANOL TANKS	20000	INLET AREA	SEPARATORS, BURNER UNITS, BURNER MANAGEMENT, FUEL SCRUBBERS	30000	OIL SYSTEM	BULK SEPARATORS, VAPOR RECOVERY TOWERS & LACTS	40000	GAS SYSTEM	GAS SCRUBBERS, DEHYs, AMINE & GAS METERS	50000	FLARE SYSTEMS	FLARES, VENT & PURGE SYSTEMS, ECDs	60000	STORAGE AREA	OIL TANKS, WATER TANKS, RECIRC PUMPS	70000	UTILITIES	AIR COMPRESSORS, GENERATORS	80000	GAS COMPRESSORS	VRUS & GAS COMPRESSORS	90000	WATER TRAIN	SWD PUMPS & WATER METERS	<div>PIPE SPECIFICATIONS NAMING CONVENTION</div> <div>FLANGE CLASS</div> <div>MATERIAL</div> <div>SERVICE</div> <div>GOVERNING CODE</div>		<div>VALVE CONNECTIONS</div> <div>THREADED/SOCKET WELD VALVE</div> <div>FLANGED VALVE</div> <div>REDUCERS</div> <div>CONCENTRIC</div> <div>ECCENTRIC (FOB) OR (FSD)</div> <div>ECCENTRIC (FOT) OR (FSU)</div> <div>SWAGE</div> <div>CONTROL ACTUATORS</div> <div>DIAPHRAGM OPERATOR</div> <div>COUNTERWEIGHT ACTUATOR VALVE</div> <div>PRESSURE REGULATOR SELF-CONTAINED</div> <div>DIAPHRAGM w/ HANDWHEEL</div> <div>PISTON OPERATOR</div> <div>PRESSURE REGULATOR w/ EXTERNAL PRESSURE TAP</div> <div>PRESSURE REGULATOR SELF-CONTAINED w/ ADJUSTING KNOB</div> <div>VALVE ACTUATOR AND POSITIONER</div> <div>MISCELLANEOUS ACTUATORS</div> <div>HANDWHEEL ACTUATOR</div> <div>ELECTROHYDRAULIC ACTUATOR</div> <div>ELECTRIC MOTOR ACTUATOR</div> <div>SOLENOID NON-LATCHING</div> <div>SOLENOID LATCHING</div>		<div>LINKS AND FLOW ARROWS</div> <div>INDICATES PROCESS INPUT/OUTPUT & FLOW DIRECTION FROM OR TO OTHER AREAS</div> <div>P&ID TO/FROM EQUIPMENT</div> <div>DUAL FLOW</div> <div>P&ID TO/FROM EQUIPMENT</div> <div>CONTINUATION ARROW FROM/TO OUTSIDE SCOPE</div> <div>CONTINUATION OF INSTRUMENT SYMBOL</div> <div>INSTRUMENT P&ID TO/FROM</div> <div>FLOW DIRECTION ARROW</div>	
AREA NUMBERS	AREA REFERENCED	TYPICAL EQUIPMENT																																																																																																																													
10000	INLET GAS AREA	SLUG CATCHERS & SEPARATORS																																																																																																																													
20000	CRUDE OIL TRANSFER EQUIPMENT	LINE HEATERS, PUMPS & SURGE VESSELS																																																																																																																													
30000	CONDENSATE HANDLING	PUMPS, WATER SEPARATION & SURGE/STORAGE																																																																																																																													
40000	COMPRESSION	ENGINE/COMP. SKID EQUIP., COOLERS, ON-SKID SEPARATORS																																																																																																																													
50000	DISCHARGE SEPARATION, DEHYDRATION	DISCHARGE SEPARATORS, FILTERS & DEHYDRATION EQUIP.																																																																																																																													
60000	AMINE SYSTEM	CONTACTOR, REGEN SYSTEM & FILTERS																																																																																																																													
70000	OUTLET AREA	GAS METERS, LACTS, PUMPS & STORAGE																																																																																																																													
80000	SWD	TANKS & PUMPS																																																																																																																													
90000	FLARE & UTILITIES																																																																																																																														
AREA NUMBERS	AREA REFERENCED	TYPICAL EQUIPMENT																																																																																																																													
10000	INLET AREA	SLUG CATCHERS, SURGE/SEPARATOR VESSELS, LACTS & INLET HEATERS																																																																																																																													
20000	-	-																																																																																																																													
30000	PROCESS EQUIPMENT	VESSELS, TOWERS, EXCHANGERS, REFLUX SYSTEM																																																																																																																													
40000	COMPRESSION	COMPRESSORS, AFTERCOOLERS, COMPRESSOR ASSOCIATED VESSELS																																																																																																																													
50000	NGL STORAGE AND LACT	STORAGE VESSELS, PUMPS, METERS, LP GAS METERS																																																																																																																													
60000	PRODUCT COOLING	HEAT EXCHANGERS, CHILLERS, PUMPS, REFRIGERANT COMPRESSORS																																																																																																																													
70000	OUTLET AREA	OIL BOOSTER PUMPS, OIL PIPELINE PUMPS, OIL LACT																																																																																																																													
80000	HEAT MEDIUM SYSTEM	HEATERS, HM PUMPS, FILTERS																																																																																																																													
90000	FLARE & UTILITIES	FLARE, KNOCKOUTS, ECD'S, T.O., AIR COMPRESSORS, DRAINS, FUEL GAS																																																																																																																													
AREA NUMBERS	AREA REFERENCED	TYPICAL EQUIPMENT																																																																																																																													
10000	INLET GAS AREA	SLUG CATCHERS & SEPARATORS																																																																																																																													
20000	CRUDE OIL TRANSFER EQUIPMENT	LINE HEATERS, PUMPS & SURGE VESSELS																																																																																																																													
30000	CONDENSATE HANDLING	PUMPS, WATER SEPARATION & SURGE/STORAGE																																																																																																																													
40000	COMPRESSION	ENGINE/COMP. SKID EQUIP., COOLERS, ON-SKID SEPARATORS																																																																																																																													
50000	DISCHARGE SEPARATION, DEHYDRATION	DISCHARGE SEPARATORS, FILTERS & DEHYDRATION EQUIP.																																																																																																																													
60000	AMINE SYSTEM	CONTACTOR, REGEN SYSTEM & FILTERS																																																																																																																													
70000	OUTLET AREA	GAS METERS, LACTS, PUMPS & STORAGE																																																																																																																													
80000	SWD	TANKS & PUMPS																																																																																																																													
90000	FLARE & UTILITIES																																																																																																																														
AREA NUMBERS	AREA REFERENCED	TYPICAL EQUIPMENT																																																																																																																													
10000	WELL HEADS	WELL HEADS & METHANOL TANKS																																																																																																																													
20000	INLET AREA	SEPARATORS, BURNER UNITS, BURNER MANAGEMENT, FUEL SCRUBBERS																																																																																																																													
30000	OIL SYSTEM	BULK SEPARATORS, VAPOR RECOVERY TOWERS & LACTS																																																																																																																													
40000	GAS SYSTEM	GAS SCRUBBERS, DEHYs, AMINE & GAS METERS																																																																																																																													
50000	FLARE SYSTEMS	FLARES, VENT & PURGE SYSTEMS, ECDs																																																																																																																													
60000	STORAGE AREA	OIL TANKS, WATER TANKS, RECIRC PUMPS																																																																																																																													
70000	UTILITIES	AIR COMPRESSORS, GENERATORS																																																																																																																													
80000	GAS COMPRESSORS	VRUS & GAS COMPRESSORS																																																																																																																													
90000	WATER TRAIN	SWD PUMPS & WATER METERS																																																																																																																													
NOTES:		REFERENCE DRAWINGS		REVISIONS		OXY Rockies		PIPING & INSTRUMENTATION DIAGRAM MECHANICAL LEGEND																																																																																																																							
								DRAWN BY: MJ																																																																																																																							
								CREATION DATE: --																																																																																																																							
								AFE No.:																																																																																																																							
								APPROVED: --																																																																																																																							
								APPR. DATE: --																																																																																																																							
								SCALE: NONE																																																																																																																							
								OXY-PID-STD-00010																																																																																																																							
								SHEET No. 10F 4																																																																																																																							

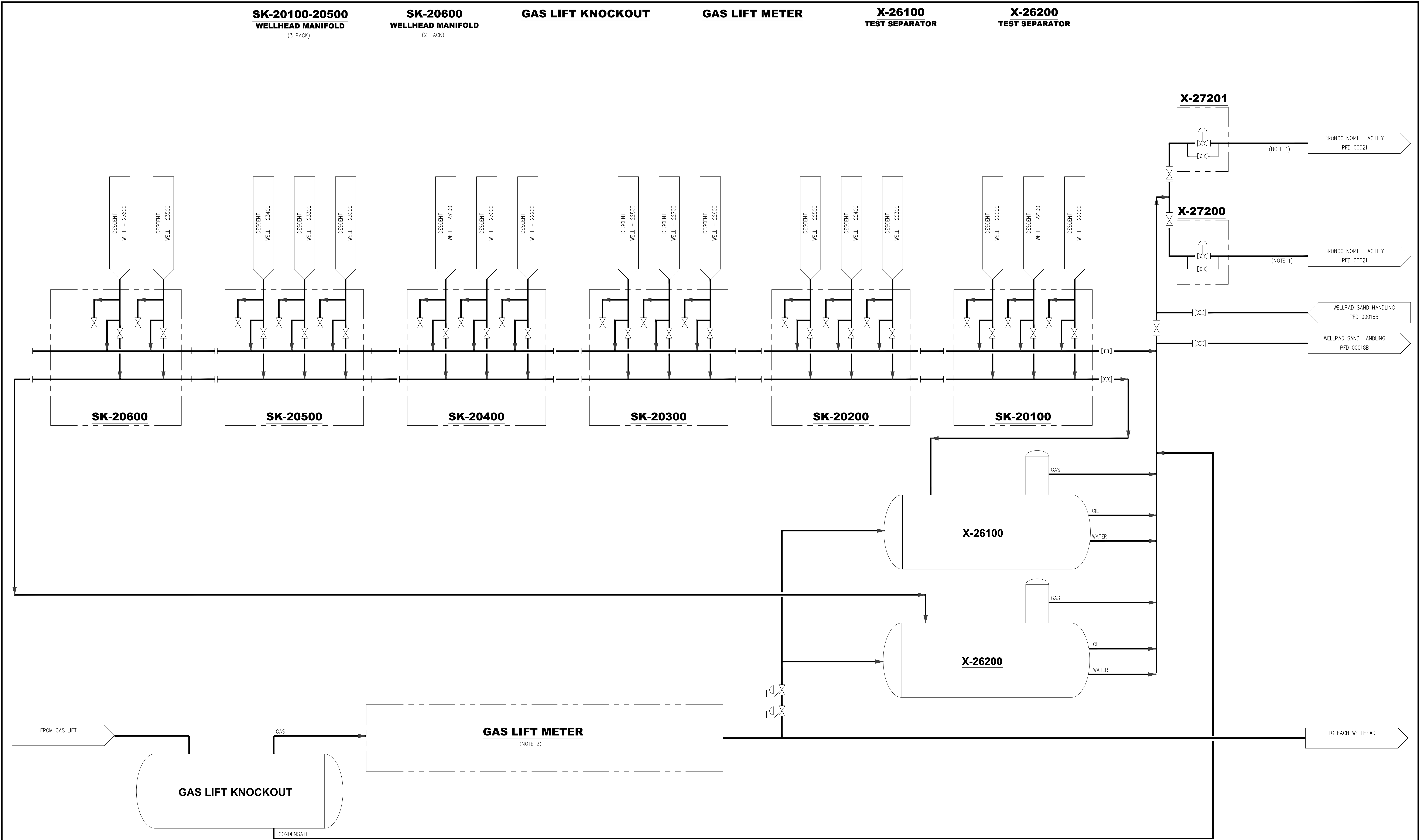
THIS DRAWING AND THE DESIGN IT COVERS ARE CONFIDENTIAL AND REMAIN THE PROPERTY OF ANADARKO PETROLEUM CORPORATION AND SHALL NOT BE DISCLOSED TO OTHERS OR REPRODUCED IN ANY MANNER OR USED FOR ANY PURPOSE WHATSOEVER EXCEPT BY WRITTEN PERMISSION BY THE OWNER.

TANKS	VESSELS			EXCHANGERS		PUMPS				
FLAT ROOF	VERTICAL VESSEL	VERTICAL VESSEL WITH SKIRT	EXCHANGER - DOUBLE END		PUMP - VERTICAL (Y AXIS)					
			EXCHANGER - SINGLE END		PUMP - HORIZONTAL (Y AXIS)					
					PUMP - CENTRIFUGAL (Y AXIS)		PUMP - DUAL			
SLOPING ROOF	VERTICAL VESSEL WITH CONE	VERTICAL VESSEL WITH SKIRT & CONE	EXCHANGER - DOUBLE END KETTLE		PUMP - SUMP (Y AXIS)		PUMP - INLINE (Y AXIS)			
			EXCHANGER - SINGLE END KETTLE		PUMP - ROTARY		PUMP - VACUUM			
					EXCHANGER - SUPER		EXCHANGER - PROCESS FLOW		PUMP - WITH STEAM TURBINE	
FLOATING ROOF	VERTICAL FLAT BOTTOM VESSEL	HORIZONTAL VESSEL	LEAN/RICH AMINE EXCHANGER		FUEL GAS HEATER		PUMP - DIAPHRAM		PULSATION DAMPENER	
			CENTRIFUGAL COMPRESSOR		AFTER COOLER WITH MOTOR		MOTOR		EQUIPMENT TAG	
NOTES:	REFERENCE DRAWINGS	REVISIONS	OXY Rockies		OXY STANDARD		PIPING & INSTRUMENTATION DIAGRAM			
							EQUIPMENT LEGEND			
							DRAWN BY: MJ		CREATION DATE: --	
APPROVED: --		APPR. DATE: --								
SCALE: NONE		DWG. No.:		OXY-PID-STD-00011		SHEET No.		2 OF 4		



REFERENCE DRAWINGS		REVISIONS							
		△							
		△							
		△							
		△	INITIAL RELEASE FOR ENGINEERING STANDARD	JRF	05/24/19	MJ	05/24/19	RFM	05/24/19
		△	ISSUED FOR REVIEW	JRF	03/27/18				
		△	ISSUED FOR APC STANDARD	MJ	10/27/17	SH	10/27/17	PA	10/27/17
DWG. NO.	TITLE	NO.	DESCRIPTION	BY	DATE	CHK.	DATE	APPR.	DATE

FILE LOCATION: L:\SharedData\Denver\RockiesFC\DWGS\LEGENDS\OXY-PID-STD-00013.dwg
LAST SAVED: 1/8/2020 BY: Max Pshchensko



THIS | NOTES:

1. AFTER PEAK PRODUCTION 2ND FLOWLINE WILL BE ISOLATED AND REMOVED FORM SERVICE; 3-5 YEARS AFTER PEAK.
2. GAS LIFT HEADER PRESSURE - 1250 PSIG.


REFERENCE DRAWINGS		REVISIONS					
DWG. NO.	TITLE	NO.	DESCRIPTION	SAB BY	DATE	NMB CHK.	JUB APPR.
					11/29/23	11/29/23	11/29/23

Kerr-McGee Oil & Gas Onshore LP

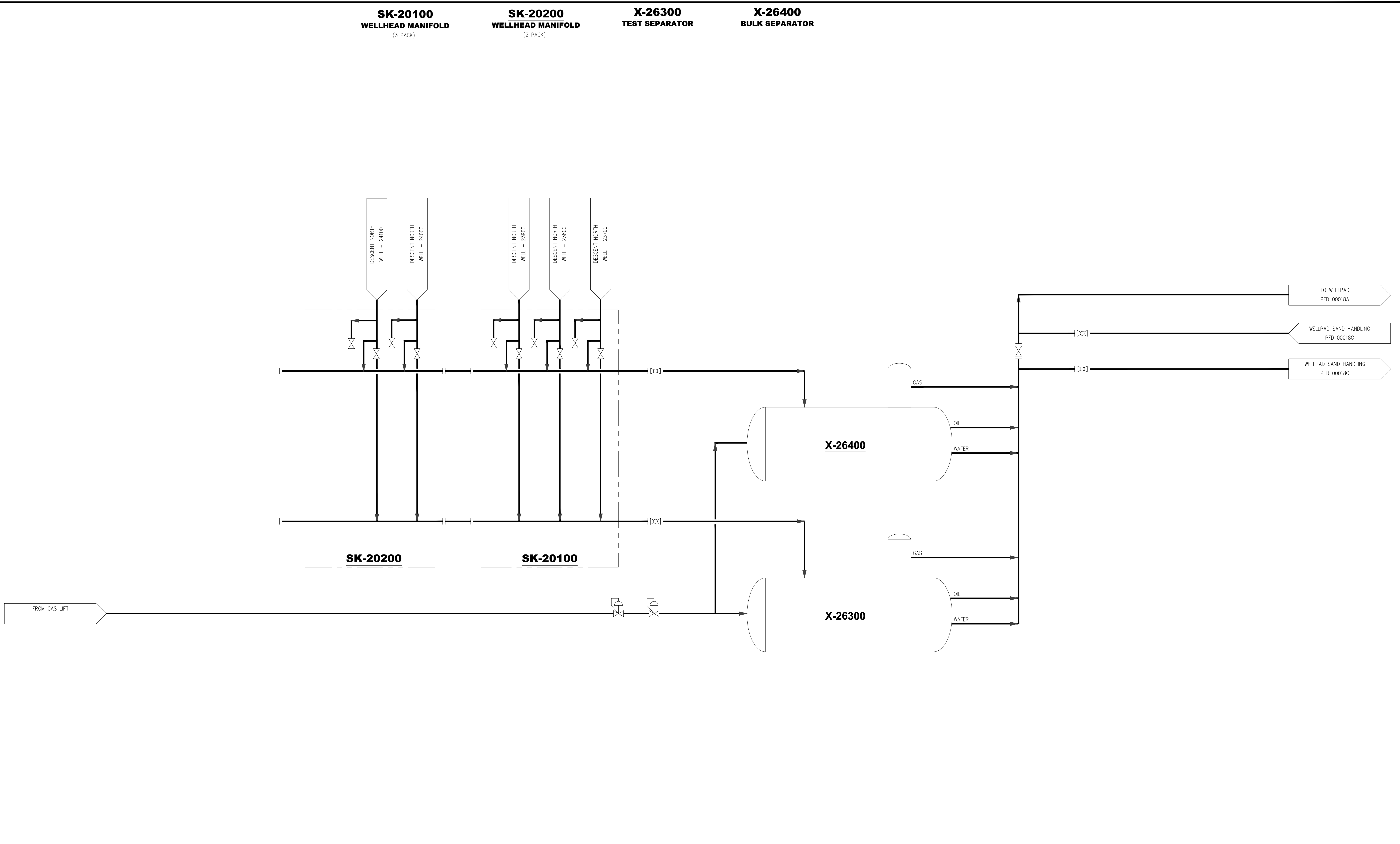
BRONCO NORTH FACILITY

PROCESS FLOW DIAGRAM

DESCENT WELLPAD PFD

DRAWN BY:	CREATION DATE:	AFE No.: -	
APPROVED:	APPR. DATE:		
	DWG. No.:	SHEET No.	
SCALE: NONE	PFD-00018A	- OF -	

THIS DRAWING AND THE DESIGN IT COVERS ARE CONFIDENTIAL AND REMAIN THE PROPERTY OF ANADARKO PETROLEUM CORPORATION AND SHALL NOT BE DISCLOSED TO OTHERS OR REPRODUCED IN ANY MANNER OR USED FOR ANY PURPOSE WHATSOEVER EXCEPT BY WRITTEN PERMISSION BY THE OWNER.



2. AFTER PEAK PRODUCTION 2ND FLOWLINE WILL BE ISOLATED AND REMOVED FROM SERVICE; 3-5 YEARS AFTER PEAK.
GAS LEFT HEADER PRESSURE ~1250 PSIG.


REFERENCE DRAWINGS		REVISIONS					
DWG. NO.	TITLE	NO.	ISSUED FOR APPROVAL	SAB BY	11/29/23 DATE	NMB CHK.	11/29/23 DATE
				JUB APPR.	11/29/23 DATE		

Kerr-McGee Oil & Gas Onshore LP

BRONCO NORTH FACILITY

PROCESS FLOW DIAGRAM

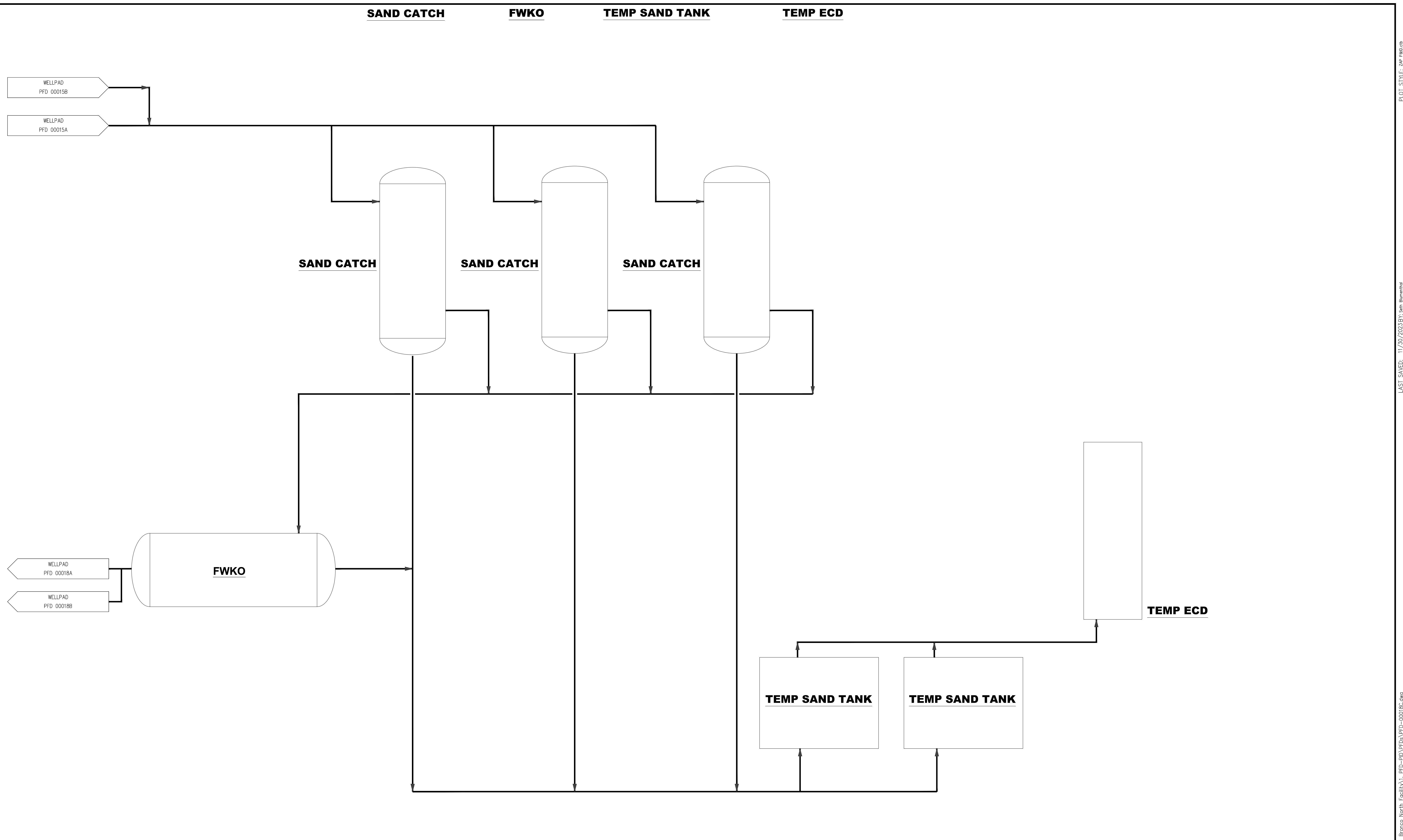
DESCENT NORTH FEDERAL WELLPAD PFD

DRAWN BY:	CREATION DATE:	AFE No.: -	
APPROVED:	APPR. DATE:		
	DWG. No.:	SHEET No.	
SCALE: NONE	PFD-00018B	- OF -	

FILE LOCATION: O:\604109 - Bronco North Facility\1. PFD-PID\PFDs\PFD-000188.dwg

LAST SAVED: 11/30/2023 BY: Seth Blumenthal

PLOT STYLE: ZAP P&ID.ctb



NOTES:

REFERENCE DRAWINGS		REVISIONS					
DWG. NO.	TITLE	NO.	DESCRIPTION	SAB BY	11/29/23 DATE	NMB CHK	JUB APPR

Kerr-McGee Oil & Gas Onshore LP

BRONCO NORTH FACILITY

<h1 style="text-align: center;">PROCESS FLOW DIAGRAM</h1> <h2 style="text-align: center;">DESCENT WELLPAD SAND HANDLING</h2>			
DRAWN BY:		CREATION DATE:	AFE No.: —
APPROVED:		APPR. DATE:	
SCALE: NONE		DWG. No.: PFD-00018C	SHEET No. — OF —
		