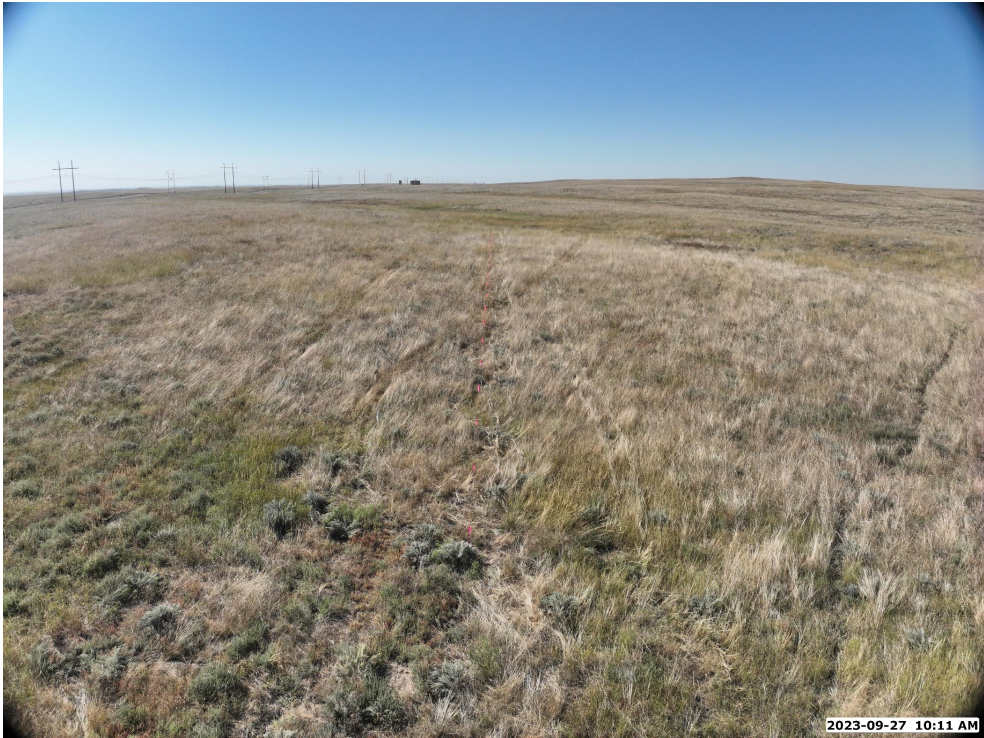


WELL PAD LOCATION PICTURES  
DESCENT FED 8-22HZ

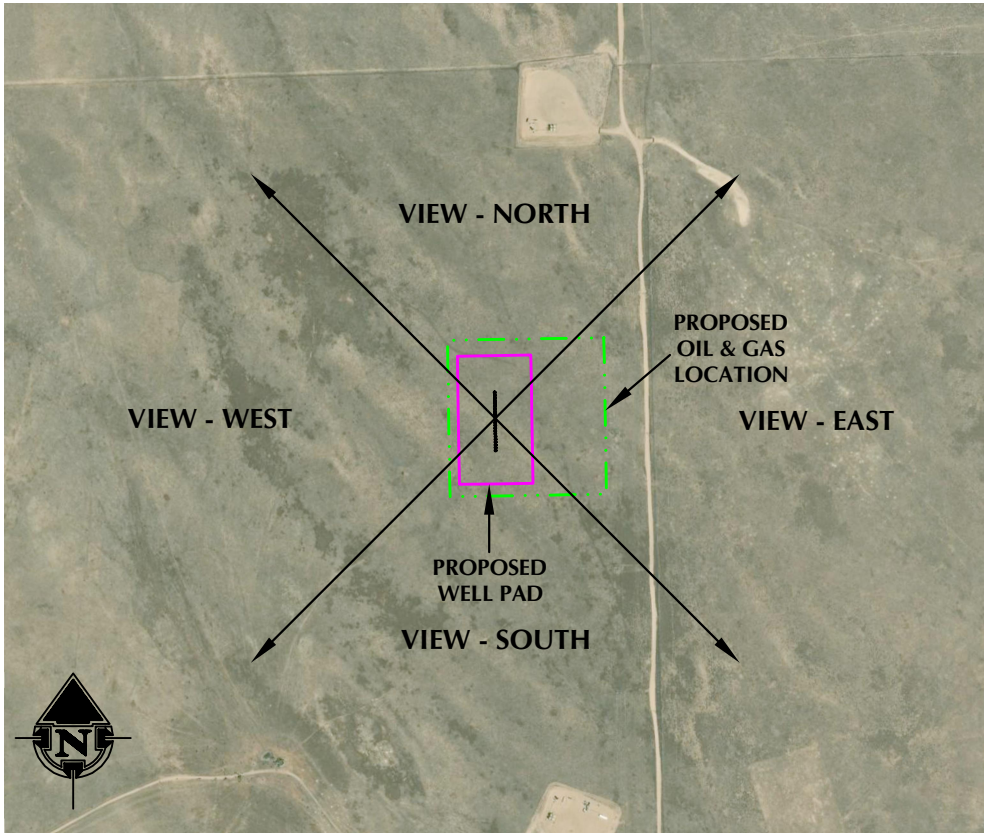
SE1/4 NE1/4 SECTION 22, TOWNSHIP 4 NORTH, RANGE 63 WEST, 6TH P.M., WELD COUNTY, COLORADO



LOCATION PICTURE OF DESCENT FED 8-22HZ WELL PAD - CAMERA VIEW NORTH



LOCATION PICTURE OF DESCENT FED 8-22HZ WELL PAD - CAMERA VIEW SOUTH



VIEW - OVERHEAD  
AERIAL IMAGERY COURTESY OF NAIP  
(2021)



LOCATION PICTURE OF DESCENT FED 8-22HZ WELL PAD - CAMERA VIEW EAST



LOCATION PICTURE OF DESCENT FED 8-22HZ WELL PAD - CAMERA VIEW WEST



LOVELAND OFFICE  
6706 North Franklin Avenue  
Loveland, Colorado 80538  
Phone 970-776-4331

SHERIDAN OFFICE  
1095 Saberton Avenue  
Sheridan, Wyoming 82801  
Phone 307-674-0609

**Kerr-McGee Oil &  
Gas Onshore LP**

**1099 18th Street  
Denver, Colorado 80202**

DATE SURVEYED: 9/27/23  
DATE: 11/22/23  
DRAFTER: AMPZ  
REVISED: 11/30/23

DATA SOURCES:  
-AERIAL IMAGERY COURTESY OF NAIP.