

## Wellhead Closure Checklist

### COGCC Rule 911.a.(4) Environmental Site Closure Assessment Field Form

Additional attachments (optional):		Pit Closure <u>        </u>		Tank Battery Closure <u>        </u>		Flowline Closure 07/24/23 - 07/25/23	Partially Buried Vault Closure <u>        </u>
Site Name & COGCC Facility Number: State #36-614		Date: 06/19/23				Remediation Project #: 28208	
Associated Wells: 05-123-17797		Age of Site: Years				Number of Photos Attached: 1	
Location: (GPS coordinates of wellhead or southeastern most wellhead for multiple)						Estimated Facility Size (acres):	
40.271320 / -104.501620							
General Condition of Site: (General observations regarding housekeeping, corrosion, waste management, etc.)							
Good Condition							
USCS Soil Type: Silty SAND				Estimated Depth to Groundwater: Approx. 20-30'			
Hydrocarbon Impacted Soils / Spills: (Note estimated size and if impact appears to be surficial or extends to an unknown depth)							
Slight hydrocarbon odor observed in excavation, no staining.							
Salt Crusted Soils or Impacted Vegetation: (Note estimated size and if impact appears to be surficial or extends to an unknown depth)							
None observed.							
Wellhead(s)							
Well API	05-123-17797						
Age	Years						
Condition of surface around wellhead	Good Condition						
PID Readings	WH-N: 4.0	WH-E: 3.2	WH-S: 1.2	WH-W: 5.1			
Condition of subsurface (staining present)	Slight HC odor observed.						
PID Readings	35.9	4410	122.5	67.2	415.6		
Sample taken? Location/Sample ID#	WH-SS-01	WH-SS-02	WH-SS-03	WH-SS-04	WH-FS-01		
Photo Number(s)	See photolog						
Other observations regarding wellheads:							
Well casing cut/capped following assessment.							
Summary							
Was impacted soil identified?							
No		<input checked="" type="checkbox"/> - less than 10 cubic yards			Yes - more than 10 cubic yards		
Total number of samples field screened: 9				Total number of samples collected: 9			
Highest PID Reading: 4410				Total number of samples submitted to lab for analysis: 5			
If more than 10 cubic yards of impacted soil were observed:							
Vertical extent:				Estimated spill volume:			
N/A							
Lateral extent:				Volume of soil removed:			
Is additional investigation required?							
Was groundwater encountered during the investigation?							
<input checked="" type="checkbox"/> No		Yes - not impacted or in contact with impacted soils			Yes - groundwater impacted and/or in contact with impacted soils		
Measured depth to groundwater:				Was remedial groundwater removal conducted? Yes No			
Date Groundwater was encountered:				Commencement date of removal:			
Sheen on groundwater? Yes No				Volume of groundwater removed prior to sampling:			
Free product observed? Yes No				Volume of groundwater removed post sampling:			
Total number of samples collected:				Total Volume of groundwater removed:			
Total number of samples submitted to lab for analysis:							

## Flowline Closure Checklist

### COGCC Rule 911.a.(4) Environmental Site Closure Assessment Field Form

Additional Attachments:	Tank Battery Closure <input type="checkbox"/>	Wellhead Closure 06/19/23	Pit Closure <input type="checkbox"/>	Partially Buried Vault Closure <input type="checkbox"/>				
Site Name & COGCC Facility Number: State #36-614		Date: 07/24/23 - 07/25/23		Remediation Project #: 28208				
Associated Wells: 05-123-17797		Age of Site: Years		Number of Photos Attached:				
Starting point: (GPS coordinates and descriptions) 40.271300 / -104.501611 at well								
End point: (GPS coordinates and descriptions) 40.268556 / -104.501537 at separator								
USCS Soil Type: Silty SAND			Estimated Depth to Groundwater: Approx. 20-30'					
Hydrocarbon Impacted Soils / Spills: (Note estimated size and if impact appears to be surficial or extends to an unknown depth) None observed.								
Salt Crusted Soils or Impacted Vegetation: (Note estimated size and if impact appears to be surficial or extends to an unknown depth) None observed.								
Flowlines								
Flowline type	O, G, W							
Depth	Approx. 3'							
Age	Years							
Length	Approx. 1007'							
Construction Material	Steel							
Were flowlines pulled?	Yes - Flowline Removed							
Visual Integrity of lines	Good							
Visual impacts if trenched	None observed.							
PID Readings if trenched	1.2	1.1	0.9	1.7	1.5	1.8		
Sample taken? Location/Sample ID#	FL-SS-01	FL-SS-02	FL-SS-03	FL-SS-04	FL-SS-05	FL-SS-06		
Photo Number(s)	See photolog							
Other observations regarding on location flowlines:								
Summary								
Was impacted soil identified? <input checked="" type="checkbox"/> No      Yes - less than 10 cubic yards      Yes - more than 10 cubic yards								
Total number of samples field screened: 6				Total number of samples collected: 6				
Highest PID Reading: 1.8				Total number of samples submitted to lab for analysis: 2				
If more than 10 cubic yards of impacted soil were observed:								
Vertical extent:				Estimated spill volume:				
Lateral extent: N/A				Volume of soil removed:				
Is additional investigation required?								
Was groundwater encountered during the investigation? <input checked="" type="checkbox"/> No      Yes - not impacted or in contact with impacted soils      Yes - groundwater impacted and/or in contact with impacted soils								
Measured depth to groundwater:				Was remedial groundwater removal conducted? Yes      No				
Date Groundwater was encountered:				Commencement date of removal:				
Sheen on groundwater? Yes      No				Volume of groundwater removed prior to sampling:				
Free product observed? Yes      No      N/A				Volume of groundwater removed post sampling:				
Total number of samples collected:				Total Volume of groundwater removed:				
Total number of samples submitted to lab for analysis:								



## **FIGURES**

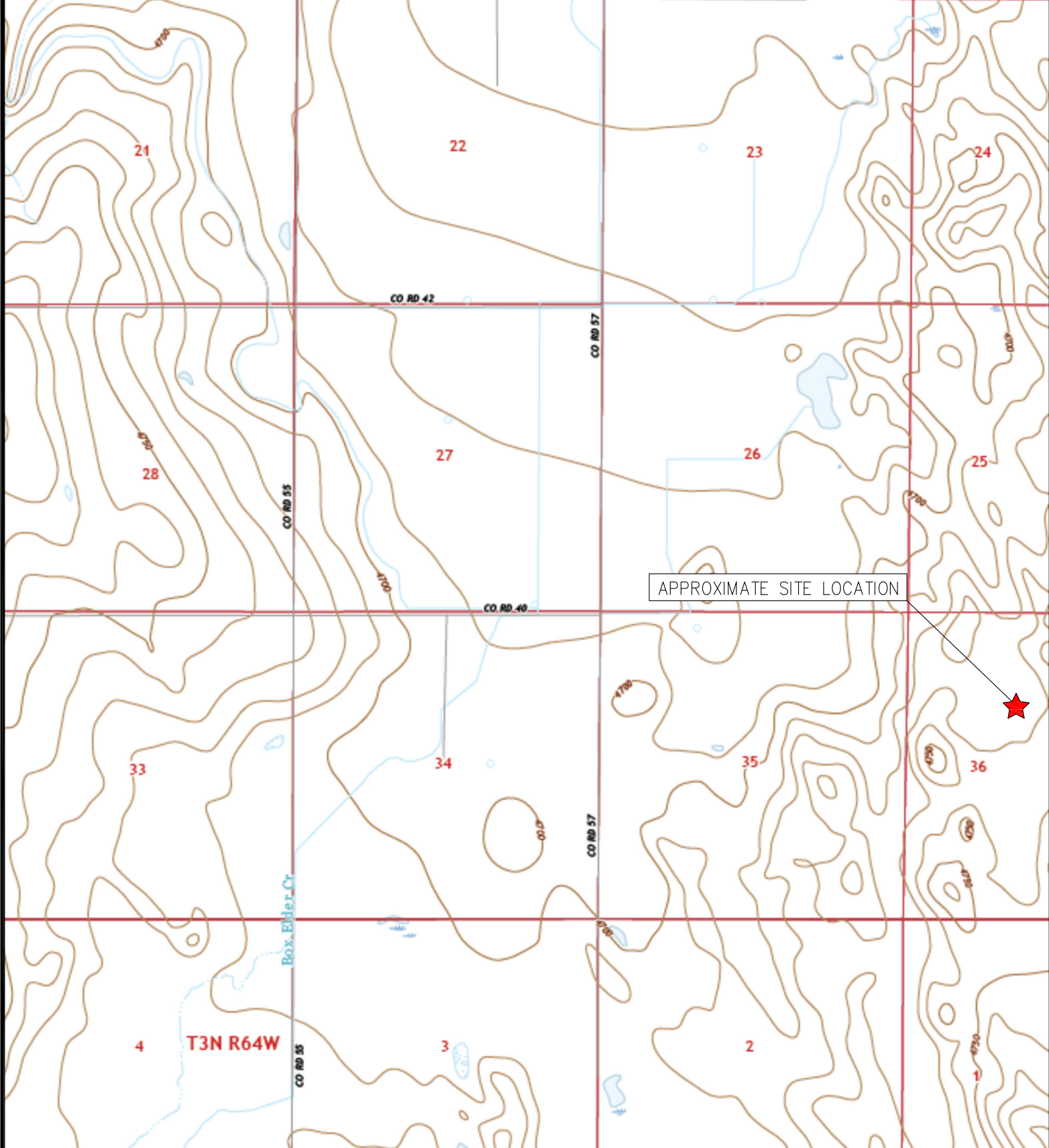
**Figure 1: Topographic Site Location Map**

**Figure 2: Aerial Site Location Map**

**Figure 3: Soil Analytical Map**

**Figure 4: Polycyclic Aromatic Hydrocarbons Map**

**Figure 5: Metals in Soil Map**



TOPOGRAPHIC SITE LOCATION MAP  
 STATE #36-614  
 CLOSURE ASSESSMENT  
 40.271320 / -104.501620  
 SE 1/4 NW 1/4 SEC.36 T4N R64W 6PM  
 WELD COUNTY, COLORADO  
 API # 05-123-17797  
 REMEDIATION # 28208



**EAGLE**  
 ENVIRONMENTAL  
 CONSULTING, LLC  
 8000 W 44th Ave, Wheat Ridge, CO 80033  
 Ph: 303-433-0479 • F: 303-325-5449



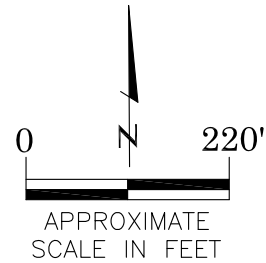
SOURCE: USGS 7.5 MINUTE TOPOGRAPHIC MAP,  
 VALLEY VIEW SCHOOL, CO QUADRANGLE 2022

FIGURE NO. 1



LEGEND

- FORMER STATE #36-614 WELLHEAD (PLUGGED AND ABANDONED)
- ASSOCIATED SEPARATOR
- APPROXIMATE FLOWLINE LOCATION (REMOVED)
- APPROXIMATE FLOWLINE SAMPLE LOCATIONS - FIELD SCREENED
- APPROXIMATE FLOWLINE SAMPLE LOCATIONS - LAB SUBMITTED



AERIAL SITE LOCATION MAP  
 STATE #36-614  
 CLOSURE ASSESSMENT  
 40.271320 / -104.501620  
 SE¼ NW¼ SEC.36 T4N R64W 6PM  
 WELD COUNTY, COLORADO  
 API # 05-123-17797  
 REMEDIATION # 28208

FIGURE NO.  
2

DRAWN BY:  
GK



**EAGLE**  
 ENVIRONMENTAL  
 CONSULTING, LLC

8000 W 44th Ave, Wheat Ridge, CO 80033  
 Ph: 303-433-0479 • F: 303-325-5449

WH-FS-01@6'  
06/19/23  
6'  
pH = **8.40**  
ALL OTHERS = BRL

WH-SS-04@5'  
06/19/23  
5'  
pH = **8.38**  
ALL OTHERS = BRL

WH-SS-03@5'  
06/19/23  
5'  
pH = **8.35**  
ALL OTHERS = BRL

FL-SS-01@3'  
07/24/23  
3'  
BRL

FL-SS-06@3'  
07/25/23  
3'  
pH = **8.41** (8.30/8.29)  
ALL OTHERS = BRL

WH-SS-01@5'  
06/19/23  
5'  
BRL

WH-SS-02@5'  
06/19/23  
5'  
G = **88.0**  
D = **631**  
R = **149**  
1,2,4-TMB = **0.0139\***  
1,3,5-TMB = **0.198\***

BACKGROUND-01@3'  
06/19/23  
3'  
pH = 7.96

BACKGROUND-02@3'  
07/24/23  
3'  
pH = 7.94

**LEGEND**

- WELLHEAD ASSESSMENT BOUNDARIES
- APPROXIMATE FLOWLINE LOCATION (REMOVED)
- SS-02 APPROXIMATE LOCATION OF SOIL SAMPLES FIELD SCREENED, ONLY, WITH PHOTOIONIZATION DETECTOR
- SS-02 APPROXIMATE LOCATION OF SOIL SAMPLES SUBMITTED FOR LABORATORY ANALYSIS

**PARAMETERS**

SAMPLE LOCATION	
DATE	DEPTH (FEET)
B = BENZENE (mg/kg)	
T = TOLUENE (mg/kg)	
E = ETHYLBENZENE (mg/kg)	
X = TOTAL XYLENES (mg/kg)	
N = NAPHTHALENE (mg/kg)	
G = TPH-GRO (mg/kg)	
D = TPH-DRO (mg/kg)	
R = TPH-RRO (mg/kg)	
1,2,4-TMB = 1,2,4 TRIMETHYLBENZENE (mg/kg)	
1,3,5-TMB = 1,3,5 TRIMETHYLBENZENE (mg/kg)	
Brn= BORON (mg/L)	
EC = SPECIFIC CONDUCTANCE (mmhos/cm)	
SAR= SODIUM ADSORPTION RATIO	
pH = pH (pH UNITS)	

mg/kg = MILLIGRAMS PER KILOGRAM  
mg/L = MILLIGRAMS PER LITER  
mmhos/cm = MILLIMHOS PER CENTIMETER

BRL = BELOW REGULATORY LIMITS

TPH-GRO = TOTAL PETROLEUM HYDROCARBONS - GASOLINE RANGE ORGANICS  
TPH-DRO = TOTAL PETROLEUM HYDROCARBONS - DIESEL RANGE ORGANICS  
TPH-RRO = TOTAL PETROLEUM HYDROCARBONS - RESIDUAL RANGE ORGANICS

NOTES:  
VALUES/CONCENTRATIONS EXCEEDING REGULATORY LIMITS, ONLY, SHOWN.

VALUES PRESENTED IN **BOLD** EXCEED ECMC TABLE 915-1 REGULATORY LIMITS.

VALUES PRESENTED WITH ASTERISK (\*) EXCEED ECMC TABLE 915-1 PROTECTION OF GROUNDWATER SOIL SCREENING LEVELS, ONLY.

ECMC = ENERGY & CARBON MANAGEMENT COMMISSION

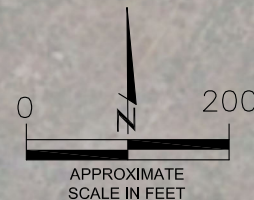
SOIL ANALYTICAL MAP  
STATE #36-614  
CLOSURE ASSESSMENT  
40.271320 / -104.501620  
SE 1/4 NW 1/4 SEC.36 T4N R64W 6PM  
WELD COUNTY, COLORADO  
API # 05-123-17797  
REMEDIAION # 28208

FIGURE NO.  
3

DRAWN BY:  
GK



**EAGLE**  
ENVIRONMENTAL  
CONSULTING, LLC  
8000 W 44th Ave, Wheat Ridge, CO 80033  
Ph: 303-433-0479 • F: 303-325-5449



WH-FS-01@6'  
06/19/23  
6'  
1-Methylnaphthalene = **0.0475\***  
2-Methylnaphthalene = **0.0517\***

WH-SS-01@5'  
06/19/23  
5'  
BRL

WH-SS-04@5'  
06/19/23  
5'  
BRL

WH-SS-01  
WH-FS-01  
WH-SS-02  
WH-SS-03  
WH-SS-04

WH-SS-02@5'  
06/19/23  
5'  
1-Methylnaphthalene = **0.577\***  
2-Methylnaphthalene = **0.979\***

WH-SS-03@5'  
06/19/23  
5'  
BRL

FL-SS-01@3'  
07/24/23  
3'  
BRL

FL-SS-01

FL-SS-02

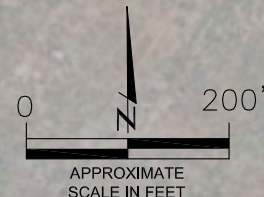
FL-SS-04

FL-SS-03

FL-SS-05

FL-SS-06@3'  
07/25/23  
3'  
BRL

FL-SS-06



**LEGEND**

- WELLHEAD ASSESSMENT BOUNDARIES
- APPROXIMATE FLOWLINE LOCATION (REMOVED)
- SS-02 APPROXIMATE LOCATION OF SOIL SAMPLES FIELD SCREENED, ONLY, WITH PHOTOIONIZATION DETECTOR
- SS-02 APPROXIMATE LOCATION OF SOIL SAMPLES SUBMITTED FOR LABORATORY ANALYSIS

**PARAMETERS**

SAMPLE LOCATION  
DATE SAMPLE COLLECTED  
APPROXIMATE DEPTH  
POLYCYCLIC AROMATIC HYDROCARBONS (PAHs) (mg/kg)

mg/kg = MILLIGRAMS PER KILOGRAM

BRL = BELOW REGULATORY LIMITS

NOTES:  
VALUES/CONCENTRATIONS EXCEEDING REGULATORY LIMITS, ONLY, SHOWN.

VALUES PRESENTED IN **BOLD** EXCEED EMC TABLE 915-1 REGULATORY LIMITS.

VALUES PRESENTED WITH AN ASTERISK (\*) EXCEED EMC TABLE 915-1 GROUNDWATER SOIL SCREENING LEVELS, ONLY.

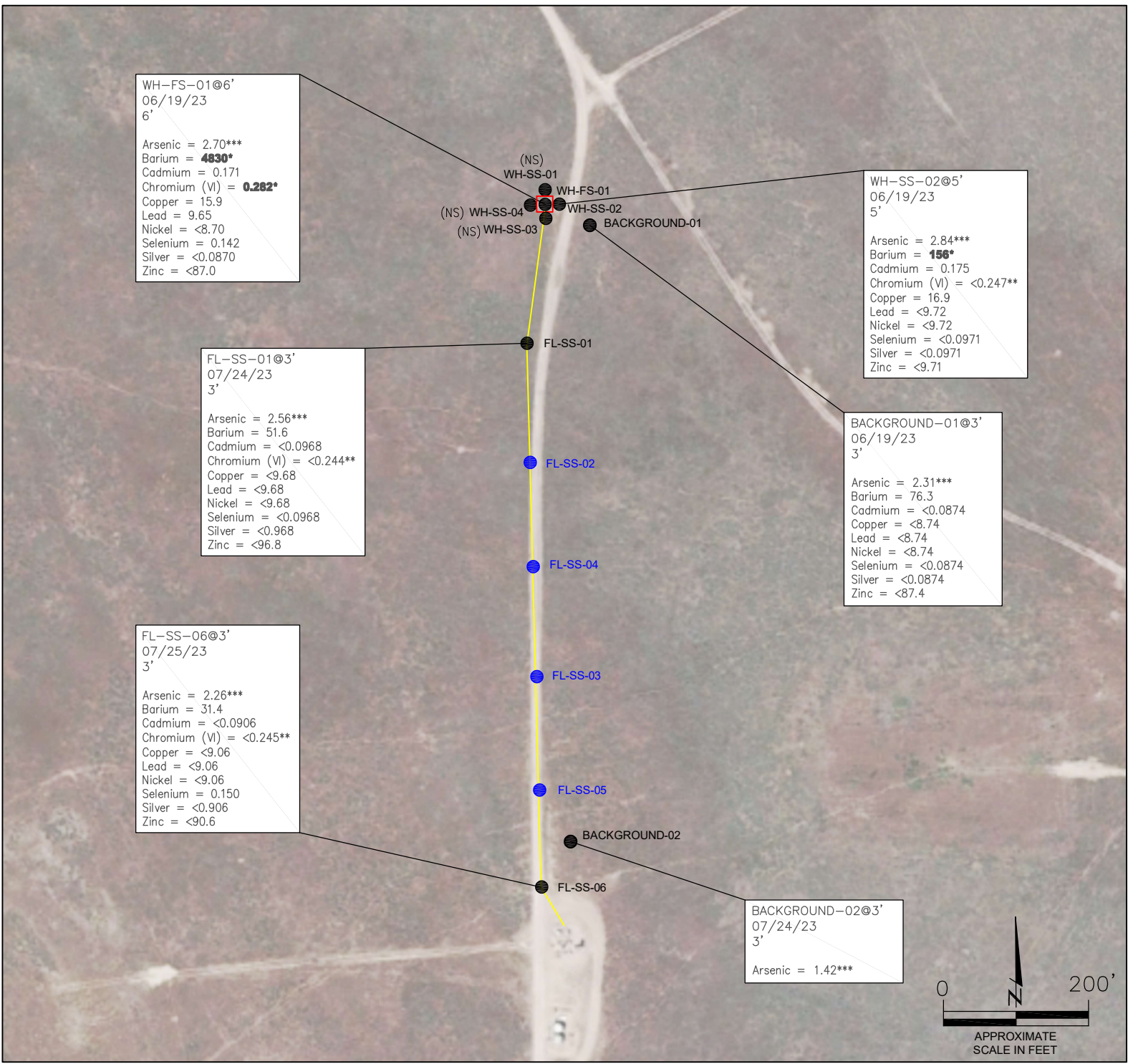
EMCM = ENERGY & CARBON MANAGEMENT COMMISSION

POLYCYCLIC AROMATIC HYDROCARBONS MAP  
STATE #36-614  
CLOSURE ASSESSMENT  
40.271320 / -104.501620  
SE¼ NW¼ SEC.36 T4N R64W 6PM  
WELD COUNTY, COLORADO  
API # 05-123-17797  
REMEDIAION # 28208

FIGURE NO.  
4

DRAWN BY:  
GK

**EAGLE ENVIRONMENTAL CONSULTING, LLC**  
8000 W 44th Ave, Wheat Ridge, CO 80033  
Ph: 303-433-0479 • F: 303-325-5449



**LEGEND**

- WELLHEAD ASSESSMENT BOUNDARIES
- APPROXIMATE FLOWLINE LOCATION (REMOVED)
- APPROXIMATE LOCATION OF SOIL SAMPLES FIELD SCREENED, ONLY, WITH PHOTOIONIZATION DETECTOR
- APPROXIMATE LOCATION OF SOIL SAMPLES SUBMITTED FOR LABORATORY ANALYSIS

**PARAMETERS**

SAMPLE LOCATION	DATE SAMPLE COLLECTED	APPROXIMATE DEPTH
Arsenic = (mg/kg)		
Barium = (mg/kg)		
Cadmium = (mg/kg)		
Chromium (VI) = (mg/kg)		
Copper = (mg/kg)		
Lead = (mg/kg)		
Nickel = (mg/kg)		
Selenium = (mg/kg)		
Silver = (mg/kg)		
Zinc = (mg/kg)		

mg/kg = MILLIGRAMS PER KILOGRAM

(NS) - NOT SAMPLED

**NOTES:**

VALUES PRESENTED WITH A LESS THAN SYMBOL (<) DID NOT CONTAIN CONCENTRATIONS AT/OR ABOVE LABORATORY REPORTING LIMITS AND/OR MINIMUM DETECTION LIMITS.

VALUES PRESENTED IN **BOLD** EXCEED ECMC TABLE 915-1 REGULATORY LIMITS.

\*VALUES EXCEED ECMC TABLE 915-1 PROTECTION OF GROUNDWATER SOIL SCREENING LEVELS, ONLY.

\*\*ACHIEVABLE PRACTICAL QUANTITATIVE LIMITS FOR HEXAVALENT CHROMIUM (Cr VI) IN SOILS IS IN THE RANGE OF 0.1 TO 1 mg/kg.

\*\*\*ARSENIC IS NATURALLY OCCURRING IN COLORADO. LOCAL CLEAN-UP LEVEL (2.88 mg/kg) IS 1.25\*BACKGROUND HIGH (2.31 mg/kg).

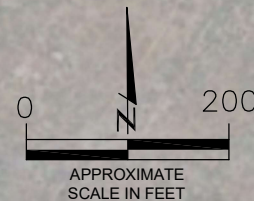
ECMC = ENERGY & CARBON MANAGEMENT COMMISSION

METALS IN SOIL MAP  
STATE #36-614  
CLOSURE ASSESSMENT  
40.271320 / -104.501620  
SE¼ NW¼ SEC.36 T4N R64W 6PM  
WELD COUNTY, COLORADO  
API # 05-123-17797  
REMEDIAION # 28208

FIGURE NO.  
5

DRAWN BY:  
GK

**EAGLE ENVIRONMENTAL CONSULTING, LLC**  
8000 W 44th Ave, Wheat Ridge, CO 80033  
Ph: 303-433-0479 • F: 303-325-5449





## **TABLES**

**Table 1: Photoionization Detector Reading Summary**

**Table 2: Soil Analytical Results Summary**

**TABLE 1**  
**PHOTOIONIZATION DETECTOR READING SUMMARY**  
**STATE #36-614**  
**CLOSURE ASSESSMENT**  
**40.271320 / -104.501620**  
**SE¼ NW¼ SEC.36 T4N R64W 6PM**  
**WELD COUNTY, COLORADO**  
**API # 05-123-17797**  
**REMEDIATION # 28208**

Sample Location (Latitude/Longitude)	Date	Approximate Depth (feet)	PID Reading (ppm-v)	Lab Submission (Y/N)
WH-SS-01 @ 5' (40.271321 / -104.501632)	06/19/23	5	35.9	Y
WH-SS-02 @ 5' (40.271310 / -104.501610)	06/19/23	5	4410	Y
WH-SS-03 @ 5' (40.271294 / -104.501631)	06/19/23	5	122.5	Y
WH-SS-04 @ 5' (40.271308 / -104.501649)	06/19/23	5	67.2	Y
WH-FS-01 @ 6' (40.271308 / -104.501631)	06/19/23	6	415.6	Y
Background-01 @ 3' (40.271288 / -104.501602)	06/19/23	3	1.0	Y
FL-SS-01 @3' (40.270824 / -104.501711)	07/24/23	3	1.2	Y
FL-SS-02 @3' (40.270365 / -104.501713)	07/24/23	3	1.1	N
FL-SS-03 @3' (40.269506 / -104.501664)	07/24/23	3	0.9	N
FL-SS-04 @3' (40.269952 / -104.501684)	07/24/23	3	1.7	N
FL-SS-05 @3' (40.269057 / -104.501648)	07/24/23	3	1.5	N
FL-SS-06 @ 3' (40.268794 / -104.501650)	07/25/23	3	1.8	N
Background-02 @ 3' (40.268902 / -104.501538)	07/24/23	3	1.9	Y
(Y/N) = Yes or No ppm-v = parts per million by volume PID = Photoionization Detector				



TABLE 2  
SOIL ANALYTICAL RESULTS SUMMARY  
STATE #36-614  
CLOSURE ASSESSMENT  
40.271320 / -104.501620  
SE¼ NW¼ SEC.36 T4N R64W 6PM  
WELD COUNTY, COLORADO  
API # 05-123-17797  
REMEDATION # 28208

Sample Location (Latitude / Longitude)		WH-SS-01 @ 5' (40.271321 / -104.501632)	WH-SS-02 @ 5' (40.271310 / -104.501610)	WH-SS-03 @ 5' (40.271294 / -104.501631)	WH-SS-04 @ 5' (40.271308 / -104.501649)	WH-FS-01 @ 6' (40.271288 / -104.501602)	Background-01 @ 3'	
Sample Date		6/19/2023	6/19/2023	6/19/2023	6/19/2023	6/19/2023	6/19/2023	
Sample Depth		5'	5'	5'	5'	6'	3'	
PID Reading (ppm-v)		35.9	4410	122.5	67.2	415.6	1.0	
Regulatory Limits								
Chemical of Concern	Units	ECMC Table 915-1 RSSLs	ECMC Table 915-1 GSSLs	Local Clean-Up Level				
VOCs								
Benzene	mg/kg	1.2	0.0026	--	<0.00200	<0.00200	<0.00200	NA
Toluene	mg/kg	490	0.69	--	<0.00200	<0.00200	<0.00200	NA
Ethylbenzene	mg/kg	5.8	0.78	--	<0.00200	<0.00200	<0.00200	NA
Total Xylenes	mg/kg	58	9.9	--	<0.00200	0.0639	<0.00200	NA
Naphthalene	mg/kg	2	0.0038	--	<0.00380	<0.00380	<0.00380	NA
1,2,4-Trimethylbenzene	mg/kg	30	0.0081	--	<0.00200	<b>0.0139*</b>	<0.00200	NA
1,3,5-Trimethylbenzene	mg/kg	27	0.0087	--	<0.00200	<b>0.198*</b>	<0.00200	0.00620
TOTAL PETROLEUM HYDROCARBONS								
TPH-GRO	mg/kg	500	--	--	<0.200	<b>88.0</b>	<0.200	0.991
TPH-DRO	mg/kg	500	--	--	<25.0	<b>631</b>	<25.0	128
TPH-RRO	mg/kg	500	--	--	<100	<b>149</b>	<100	<100
POLYCYCLIC AROMATIC HYDROCARBONS								
1-Methyl-naphthalene	mg/kg	18	0.006	--	<0.00201	<b>0.577*</b>	0.00509	0.00155
2-Methyl-naphthalene	mg/kg	24	0.019	--	<0.00201	<b>0.979*</b>	0.00835	<b>0.517*</b>
Acenaphthene	mg/kg	360	0.55	--	<0.00067	0.0775	0.00123	<0.00067
Anthracene	mg/kg	1800	5.8	--	<0.00067	<0.00335	<0.00067	<0.00067
Benzo(a)-anthracene	mg/kg	1.1	0.011	--	<0.00067	<0.00335	<0.00067	0.00304
Benzo(a)-pyrene	mg/kg	0.11	0.24	--	<0.00067	<0.00335	<0.00067	<0.00067
Benzo(b)-fluoranthene	mg/kg	1.1	0.3	--	<0.00067	<0.00335	<0.00067	<0.00067
Benzo(k)-fluoranthene	mg/kg	11	2.9	--	<0.00067	<0.00335	<0.00067	<0.00067
Chrysene	mg/kg	110	9	--	<0.00067	0.0251	<0.00067	0.00581
Dibenzo(a,h)-anthracene	mg/kg	0.11	0.096	--	<0.00067	<0.00335	<0.00067	<0.00067
Fluoranthene	mg/kg	240	8.9	--	<0.00067	<0.00335	<0.00067	0.00067
Fluorene	mg/kg	240	0.54	--	<0.00067	0.125	0.00224	0.000659
Indeno(1,2,3-cd)-pyrene	mg/kg	1.1	0.98	--	<0.00067	<0.00335	<0.00067	<0.00067
Pyrene	mg/kg	180	1.3	--	<0.00067	0.00822	<0.00067	0.00287
SOIL SUITABILITY (Inorganics)								
Boron	mg/L	2	--	--	0.104	0.114	0.112	<0.0991
pH	standard unit	6-8.3	--	--	8.28	7.72	<b>8.35</b>	<b>8.40</b>
Sodium Adsorption Ratio (SAR)	--	<6	--	--	0.327	0.554	0.356	0.360
Specific Conductance (EC)	mmhos/cm	<4	--	--	0.275	0.256	0.258	0.212
METALS								
Arsenic	mg/kg	0.68***	0.29***	2.88***	NA	2.84***	NA	NA
Barium	mg/kg	15000	82	--	NA	<b>156*</b>	NA	<b>4830*</b>
Cadmium	mg/kg	71	0.38	--	NA	0.175	NA	0.171
Copper	mg/kg	3100	46	--	NA	16.9	NA	15.9
Lead	mg/kg	400	14	--	NA	<9.71	NA	9.65
Nickel	mg/kg	1500	26	--	NA	<9.71	NA	<8.70
Selenium	mg/kg	390	0.26	--	NA	<0.0971	NA	0.142
Silver	mg/kg	390	0.8	--	NA	<0.0971	NA	<0.0870
Zinc	mg/kg	23000	370	--	NA	<97.1	NA	<87.0
Hexavalent Chromium	mg/kg	0.3**	0.00067**	0.1 to 1.0**	NA	<0.247**	NA	<b>0.282*</b>

ECMC = Energy & Carbon Management Commission    NA - Not Analyzed    VOCs - Volatile Organic Compounds  
mg/kg = milligrams per kilogram  
mmhos/cm = millimhos per centimeter    RSSLs = Residential Soil Screening Levels  
PID = Photoionization Detector    GSSLs = Protection of Groundwater Soil Screening Levels  
ppm-v = parts per million by volume    TPH-GRO = Total Petroleum Hydrocarbons - Gasoline Range Organics  
mg/L = milligrams per liter    TPH-DRO = Total Petroleum Hydrocarbons - Diesel Range Organics  
SAR = Sodium Adsorption Ratio    TPH-RRO = Total Petroleum Hydrocarbons - Residual Range Organics

Notes:  
Values presented with a less than symbol (<) did not contain concentrations at or above the laboratory reporting limit and/or minimum detection limit.  
Values presented in **BOLD** exceed ECMC Table 915-1 Regulatory Limits. Values presented with asterisk (\*) exceed ECMC Table 915-1 GSSLs  
Laboratory reruns were completed as applicable on samples with pH values outside ECMC Table 915-1 range. Results of the reruns are presented in parentheses.  
\*\*Achievable practical quantitative limits for Hexavalent Chromium in soils is in the range of 0.1 to 1 mg/kg.  
\*\*\*Arsenic is naturally occurring in Colorado. Local clean-up level (2.88 mg/kg) is 1.25\*background high (2.34 mg/kg).

TABLE 2  
SOIL ANALYTICAL RESULTS SUMMARY  
STATE #36-614  
CLOSURE ASSESSMENT  
40.271320 / -104.501620  
SE¼ NW¼ SEC.36 T4N R64W 6PM  
WELD COUNTY, COLORADO  
API # 05-123-17797  
REMEDATION # 28208

Sample Location		FL-SS-01 @ 3'	FL-SS-06 @ 3'	Background-02 @ 3'			
(Latitude / Longitude)		(40.270824 / -104.501711)	(40.268794 / -104.501650)	(40.268902 / -104.501538)			
Sample Date		6/24/2023	6/25/2023	6/24/2023			
Sample Depth		3	3	3			
PID Reading (ppm-v)		1.2	1.8	1.9			
Regulatory Limits							
Chemical of Concern	Units	ECMC Table 915-1 RSSLs	ECMC Table 915-1 GSSLs	Local Clean-Up Level			
VOCs							
Benzene	mg/kg	1.2	0.0026	--	<0.00200	<0.00200	NA
Toluene	mg/kg	490	0.69	--	<0.00200	<0.00200	NA
Ethylbenzene	mg/kg	5.8	0.78	--	<0.00200	<0.00200	NA
Total Xylenes	mg/kg	58	9.9	--	<0.00200	<0.00200	NA
Naphthalene	mg/kg	2	0.0038	--	<0.00380	<0.00380	NA
1,2,4-Trimethylbenzene	mg/kg	30	0.0081	--	<0.00200	<0.00200	NA
1,3,5-Trimethylbenzene	mg/kg	27	0.0087	--	<0.00200	<0.00200	NA
TOTAL PETROLEUM HYDROCARBONS							
TPH-GRO	mg/kg	500	--	--	<0.200	<0.200	NA
TPH-DRO	mg/kg	500	--	--	<25.0	<25.0	NA
TPH-RRO	mg/kg	500	--	--	<100	<100	NA
POLYCYCLIC AROMATIC HYDROCARBONS							
1-Methyl-naphthalene	mg/kg	18	0.006	--	<0.00201	<0.00201	NA
2-Methyl-naphthalene	mg/kg	24	0.019	--	<0.00201	<0.00201	NA
Acenaphthene	mg/kg	360	0.55	--	<0.00067	<0.00067	NA
Anthracene	mg/kg	1800	5.8	--	<0.00067	0.000501	NA
Benzo(a)-anthracene	mg/kg	1.1	0.011	--	<0.00067	0.000687	NA
Benzo(a)-pyrene	mg/kg	0.11	0.24	--	<0.00067	0.000837	NA
Benzo(b)-fluoranthene	mg/kg	1.1	0.3	--	<0.00067	0.000772	NA
Benzo(k)-fluoranthene	mg/kg	11	2.9	--	<0.00067	<0.00067	NA
Chrysene	mg/kg	110	9	--	<0.00067	0.000923	NA
Dibenzo(a,h)-anthracene	mg/kg	0.11	0.096	--	<0.00067	<0.00067	NA
Fluoranthene	mg/kg	240	8.9	--	<0.00067	0.00229	NA
Fluorene	mg/kg	240	0.54	--	<0.00067	<0.00067	NA
Indeno(1,2,3-cd)-pyrene	mg/kg	1.1	0.98	--	<0.00067	<0.00067	NA
Pyrene	mg/kg	180	1.3	--	<0.00067	0.00163	NA
SOIL SUITABILITY (Inorganics)							
Boron	mg/L	2	--	--	<0.0998	<0.0981	NA
pH	standard unit	6-8.3	--	--	8.04	8.41 (8.30/8.29)	7.94
Sodium Adsorption Ratio (SAR)	--	<6	--	--	0.169	1.31	NA
Specific Conductance (EC)	mmhos/cm	<4	--	--	0.316	0.472	NA
METALS							
Arsenic	mg/kg	0.68***	0.29***	2.88***	2.56***	2.26***	1.42***
Barium	mg/kg	15000	82	--	51.6	31.4	NA
Cadmium	mg/kg	71	0.38	--	<0.0968	<0.0906	NA
Copper	mg/kg	3100	46	--	<9.68	<9.06	NA
Lead	mg/kg	400	14	--	<9.68	<9.06	NA
Nickel	mg/kg	1500	26	--	<9.68	<9.06	NA
Selenium	mg/kg	390	0.26	--	<0.0968	0.150	NA
Silver	mg/kg	390	0.8	--	<0.0968	<0.0906	NA
Zinc	mg/kg	23000	370	--	<96.8	<90.6	NA
Hexavalent Chromium	mg/kg	0.3**	0.00067**	0.1 to 1.0**	<0.244**	<0.245**	NA
ECMC = Energy & Carbon Management Commission mg/kg = milligrams per kilogram mmhos/cm = millimhos per centimeter PID = Photoionization Detector ppm-v = parts per million by volume mg/L = milligrams per liter SAR = Sodium Adsorption Ratio Notes: Values presented with a less than symbol (<) did not contain concentrations at or above the laboratory reporting limit and/or minimum detection limit. Values presented in <b>BOLD</b> exceed ECMC Table 915-1 Regulatory Limits. Values presented with asterisk (*) exceed ECMC Table 915-1 GSSLs Laboratory reruns were completed as applicable on samples with pH values outside ECMC Table 915-1 range. Results of the reruns are presented in parentheses. **Achievable practical quantitative limits for Hexavalent Chromium in soils is in the range of 0.1 to 1 mg/kg. ***Arsenic is naturally occurring in Colorado. Local clean-up level (2.88 mg/kg) is 1.25*background high (2.34 mg/kg).							



## **ATTACHMENT A**

### **Photo Log**

State #36-614  
API # 05-123-17797  
Remediation # 28208

Closure Assessment

June - July 2023



# Wellhead Excavation – 06/19/23



Looking northeast

Slight petroleum hydrocarbon odor observed throughout excavation; no staining observed

# Flowline Removal – 07/24/23



Looking north at flowline directional change

No petroleum hydrocarbon staining or odor observed



Looking north at bellhole/cut point for removal

No petroleum hydrocarbon staining or odor observed

# Flowline Removal – 07/24/23



FL-SS-03  
PID = 0.9 ppm

Looking north at bellhole/cut point for removal

No petroleum hydrocarbon staining or odor observed



FL-SS-04  
PID = 1.7 ppm

Looking north at bellhole/cut point for removal

No petroleum hydrocarbon staining or odor observed

# Flowline Removal – 07/25/23



Looking east at bellhole/cut point for removal

No petroleum hydrocarbon staining or odor observed



Looking north flowline directional change

No petroleum hydrocarbon staining or odor observed



## **ATTACHMENT B**

### **Laboratory Analytical Reports**



July 11, 2023

Eagle Environmental Consulting, LLC

Martin C Eckert III

8000 W 44th Ave

Wheat Ridge CO 80033

Project Name - Noble - State #36-614

Project Number - [none]

Attached are your analytical results for Noble - State #36-614 received by Origins Laboratory, Inc. June 19, 2023. This project is associated with Origins project number Y306487-01.

The analytical results in the following report were analyzed under the guidelines of EPA Methods. These methods are identified as follows; "SW" are defined in SW-846, "EPA" are defined in 40CFR part 136 and "SM" are defined in the most current revision of Standard Methods For the Examination of Water and Wastewater.

The analytical results apply specifically to the samples and analyses specified per the attached Chain of Custody. As such, this report shall not be reproduced except in full, without the written approval of Origin's laboratory.

Unless otherwise noted, the analytical results for all soil samples are reported on a wet weight basis. All analytical analyses were performed under NELAP guidelines unless noted by a data qualifier.

Any holding time exceedances, deviations from the method specifications or deviations from Origins Laboratory's Standard Operating Procedures are outlined in the case narrative.

Thank you for selecting Origins for your analytical needs. Please contact us with any questions concerning this report, or if we can help with anything at all.

Origins Laboratory, Inc.  
303.433.1322  
o-squad@oelabinc.com



Eagle Environmental Consulting, LLC  
8000 W 44th Ave  
Wheat Ridge CO 80033

Martin C Eckert III  
Project Number: [none]  
Project: Noble - State #36-614

CROSS REFERENCE REPORT

Sample ID	Laboratory ID	Matrix	Date Sampled	Date Received
WH-SS-01@5'	Y306487-01	Soil	June 19, 2023 12:25	06/19/2023 16:25
WH-SS-02@5'	Y306487-02	Soil	June 19, 2023 12:27	06/19/2023 16:25
WH-SS-03@5'	Y306487-03	Soil	June 19, 2023 12:29	06/19/2023 16:25
WH-SS-04@5'	Y306487-04	Soil	June 19, 2023 12:31	06/19/2023 16:25
WH-FS-01@6'	Y306487-05	Soil	June 19, 2023 12:33	06/19/2023 16:25

Chain of Custody Modification Request

On 7/3/2023, Grace Congdon from Eagle Environmental contacted Jennifer Pellegrini via email regarding Y306487 requesting that 915 metals be added to samples WH-SS-02@5' and WH-FS-01@6'.

Requested modifications to the chain of custody were made by Jennifer Pellegrini on 7/3/2023.

Origins Laboratory, Inc.



Jen Pellegrini, Project Manager

*The results in this report apply to the samples analyzed in accordance with the chain of custody document. This analytical report must be reproduced in its entirety.*



Eagle Environmental Consulting, LLC  
 8000 W 44th Ave  
 Wheat Ridge CO 80033

Martin C Eckert III  
 Project Number: [none]  
 Project: Noble - State #36-614

Origins Laboratory

F-012207-01-R1  
 Effective Date: 01/09/12

**Sample Receipt Checklist**

Origins Work Order: B06497

Client: Eagle  
 Client Project ID: State #36-614

Checklist Completed by: EAS

Shipped Via: HD  
(UPS, FedEx, Hand Delivered, Pick-up, etc.)

Date/time completed: 6/20/23

Airbill #: N/A

Matrix(s) Received: (Check all that apply):  Soil/Solid  Water  Other: \_\_\_\_\_

Cooler Number/Temperature: 113 °C / \_\_\_\_\_ °C / \_\_\_\_\_ °C (Describe) \_\_\_\_\_ °C

Thermometer ID: 1004

Requirement Description	Yes	No	N/A	Comments (if any)
If samples require cooling, was the temperature between 0°C to ≤ 6°C <sup>(1)</sup> ?	<input checked="" type="checkbox"/>	<input type="checkbox"/>	<input type="checkbox"/>	
Is there ice present (document if blue ice is used)	<input checked="" type="checkbox"/>	<input type="checkbox"/>	<input type="checkbox"/>	
Are custody seals present on cooler? (if so, document in comments if they are signed and dated, broken or intact)	<input type="checkbox"/>	<input checked="" type="checkbox"/>	<input type="checkbox"/>	
Are custody seals present on each sample container? (if so, document in comments if they are signed and dated, broken or intact)	<input type="checkbox"/>	<input checked="" type="checkbox"/>	<input type="checkbox"/>	
Were all samples received intact <sup>(1)</sup> ?	<input checked="" type="checkbox"/>	<input type="checkbox"/>	<input type="checkbox"/>	
Was adequate sample volume provided <sup>(1)</sup> ?	<input checked="" type="checkbox"/>	<input type="checkbox"/>	<input type="checkbox"/>	
Are short holding time analytes or samples with HTs due within 48 hours present <sup>(1)</sup> ?	<input type="checkbox"/>	<input checked="" type="checkbox"/>	<input type="checkbox"/>	
Is a chain-of-custody (COC) present and filled out completely <sup>(1)</sup> ?	<input checked="" type="checkbox"/>	<input type="checkbox"/>	<input type="checkbox"/>	
Does the COC agree with the number and type of sample bottles received <sup>(1)</sup> ?	<input checked="" type="checkbox"/>	<input type="checkbox"/>	<input type="checkbox"/>	
Do the sample IDs on the bottle labels match the COC <sup>(1)</sup> ?	<input checked="" type="checkbox"/>	<input type="checkbox"/>	<input type="checkbox"/>	
Is the COC properly relinquished by the client with date and time recorded <sup>(1)</sup> ?	<input checked="" type="checkbox"/>	<input type="checkbox"/>	<input type="checkbox"/>	
For volatiles in water – is there headspace (> ¼ inch bubble) present? <b>If yes, contact client and note in narrative.</b>	<input type="checkbox"/>	<input type="checkbox"/>	<input checked="" type="checkbox"/>	
Are samples preserved that require preservation and was it checked <sup>(1)</sup> ? (note ID of confirmation instrument used in comments) / (preservation is not confirmed for subcontracted analyses in order to insure sample integrity)/(pH <2 for samples preserved with HNO3, HCL, H2SO4) / (pH >10 for samples preserved with NaAsO2+NaOH, ZnAc+NaOH)	<input type="checkbox"/>	<input type="checkbox"/>	<input checked="" type="checkbox"/>	
Additional Comments (if any):				

<sup>(1)</sup>If NO, then contact the client before proceeding with analysis and note date, time and person contacted as well as the corrective action to in the additional comments (above) and the case narrative.

Reviewed by (Project Manager) [Signature] Date/Time Reviewed 6/21/23

Origins Laboratory, Inc.

Jefe Pellegrini

Jen Pellegrini, Project Manager

The results in this report apply to the samples analyzed in accordance with the chain of custody document. This analytical report must be reproduced in its entirety.

Eagle Environmental Consulting, LLC  
 8000 W 44th Ave  
 Wheat Ridge CO 80033

Martin C Eckert III  
 Project Number: [none]  
 Project: Noble - State #36-614

**WH-SS-01@5'**  
**6/19/2023 12:25:00PM**

Analyte	Result	Min Detection Limit	Reporting Limit	Units	Dilution	Batch	Prepared	Analyzed	Notes
---------	--------	---------------------	-----------------	-------	----------	-------	----------	----------	-------

**Origins Laboratory, Inc.**  
**Y306487-01 (Soil)**

**Boron (DTPA Sorbitol)**

Boron	0.104		0.0982	mg/L	1	B3F2113	06/21/2023	06/22/2023	
-------	-------	--	--------	------	---	---------	------------	------------	--

**DRO/ORO by EPA 8015D**

Diesel (C10-C28)	ND		25.0	mg/kg	1	B3F2017	06/20/2023	06/23/2023	U
Residual Range Organics (C28-C40)	ND		100	"	"	"	"	"	U

Surrogate: o-Terphenyl	94.1 %		50-150			"	"	"	
------------------------	--------	--	--------	--	--	---	---	---	--

**GBTEX+TMBs by 8260D**

1,2,4-Trimethylbenzene	ND		0.00200	mg/kg	1	B3F2129	06/21/2023	06/23/2023	U
1,3,5-Trimethylbenzene	ND		0.00200	"	"	"	"	"	U
Benzene	ND		0.00200	"	"	"	"	"	U
Ethylbenzene	ND		0.00200	"	"	"	"	"	U
Naphthalene	ND		0.00380	"	"	"	"	"	U
Toluene	ND		0.00200	"	"	"	"	"	U
Xylenes, total	ND		0.00200	"	"	"	"	"	U
Gasoline Range Hydrocarbons	ND		0.200	"	"	"	"	"	U

Origins Laboratory, Inc.



Jen Pellegrini, Project Manager

*The results in this report apply to the samples analyzed in accordance with the chain of custody document. This analytical report must be reproduced in its entirety.*

Eagle Environmental Consulting, LLC  
 8000 W 44th Ave  
 Wheat Ridge CO 80033

Martin C Eckert III  
 Project Number: [none]  
 Project: Noble - State #36-614

**WH-SS-01@5'**

**6/19/2023 12:25:00PM**

Analyte	Result	Min Detection Limit	Reporting Limit	Units	Dilution	Batch	Prepared	Analyzed	Notes
---------	--------	---------------------	-----------------	-------	----------	-------	----------	----------	-------

**Origins Laboratory, Inc.**  
**Y306487-01 (Soil)**

**GBTEX+TMBs by 8260D**

Surrogate: 1,2-Dichloroethane-d4	90.4 %		70-130			B3F21 29	06/21/2023	06/23/2023	
Surrogate: Toluene-d8	94.0 %		70-130			"	"	"	
Surrogate: 4-Bromofluorobenzene	83.3 %		70-130			"	"	"	

**Metals by Saturated Paste by EPA 6010**

Calcium	1.63		0.499	meq/L	10	[CALC]	06/21/2023	06/22/2023	
Magnesium	ND		0.823	"	"	"	"	"	
Sodium	ND		0.435	"	"	"	"	"	

**PAH by 8270D SIM**

1-Methylnaphthalene	ND	0.00109	0.00201	mg/Kg	1	L689081	06/22/2023	06/22/2023	
2-Methylnaphthalene	ND	0.00194	0.00201	"	"	"	"	"	
Acenaphthene	ND	0.000304	0.00067	"	"	"	"	"	
Anthracene	ND	0.000334	0.00067	"	"	"	"	"	
Benzo(a)anthracene	ND	0.000493	0.00067	"	"	"	"	"	
Benzo(a)pyrene	ND	0.000468	0.00067	"	"	"	"	"	
Benzo(b)fluoranthene	ND	0.000585	0.00067	"	"	"	"	"	
Benzo(k)fluoranthene	ND	0.000437	0.00067	"	"	"	"	"	
Chrysene	ND	0.000624	0.00067	"	"	"	"	"	
Dibenz(a,h)anthracene	ND	0.000614	0.00067	"	"	"	"	"	

Origins Laboratory, Inc.



Jen Pellegrini, Project Manager

The results in this report apply to the samples analyzed in accordance with the chain of custody document. This analytical report must be reproduced in its entirety.

Eagle Environmental Consulting, LLC  
 8000 W 44th Ave  
 Wheat Ridge CO 80033

Martin C Eckert III  
 Project Number: [none]  
 Project: Noble - State #36-614

**WH-SS-01@5'**

**6/19/2023 12:25:00PM**

Analyte	Result	Min Detection Limit	Reporting Limit	Units	Dilution	Batch	Prepared	Analyzed	Notes
---------	--------	---------------------	-----------------	-------	----------	-------	----------	----------	-------

**Waypoint Analytical, LLC.**  
**Y306487-01 (Soil)**

**PAH by 8270D SIM**

Fluoranthene	ND	0.000394	0.00067	mg/Kg	1	L689081	06/22/2023	06/22/2023	
Fluorene	ND	0.000286	0.00067	"	"	"	"	"	
Indeno(1,2,3-cd)pyrene	ND	0.000627	0.00067	"	"	"	"	"	
Pyrene	ND	0.000643	0.00067	"	"	"	"	"	

Surrogate: 2-Fluorobiphenyl	51.2 %		33-115			"	"	"	
Surrogate: 4-Terphenyl-d14	45.1 %		33-122			"	"	"	
Surrogate: Nitrobenzene-d5	46 %		29-110			"	"	"	

**pH in Soil by 9045D**

pH	8.28			pH Units	1	B3F2123	06/21/2023	06/22/2023	
----	------	--	--	----------	---	---------	------------	------------	--

**SAR by 20B Saturated Paste**

SAR	0.327			SAR	1	B3F2118	06/21/2023	06/22/2023	
-----	-------	--	--	-----	---	---------	------------	------------	--

**Specific Conductance Mod. 9050A**

Specific Conductance (EC)	0.275		0.00500	mmhos/cm	1	B3F2123	06/21/2023	06/22/2023	
---------------------------	-------	--	---------	----------	---	---------	------------	------------	--

Origins Laboratory, Inc.



Jen Pellegrini, Project Manager

*The results in this report apply to the samples analyzed in accordance with the chain of custody document. This analytical report must be reproduced in its entirety.*

Eagle Environmental Consulting, LLC  
 8000 W 44th Ave  
 Wheat Ridge CO 80033

Martin C Eckert III  
 Project Number: [none]  
 Project: Noble - State #36-614

**WH-SS-02@5'**

**6/19/2023 12:27:00PM**

Analyte	Result	Min Detection Limit	Reporting Limit	Units	Dilution	Batch	Prepared	Analyzed	Notes
---------	--------	---------------------	-----------------	-------	----------	-------	----------	----------	-------

**Origins Laboratory, Inc.**  
**Y306487-02 (Soil)**

**Boron (DTPA Sorbitol)**

Boron	0.114		0.101	mg/L	1	B3F2113	06/21/2023	06/22/2023	
-------	-------	--	-------	------	---	---------	------------	------------	--

**DRO/ORO by EPA 8015D**

Diesel (C10-C28)	631		25.0	mg/kg	1	B3F2017	06/20/2023	06/23/2023	
Residual Range Organics (C28-C40)	149		100	"	"	"	"	"	

Surrogate: o-Terphenyl	133 %		50-150			"	"	"	
------------------------	-------	--	--------	--	--	---	---	---	--

**GBTEX+TMBs by 8260D**

1,2,4-Trimethylbenzene	0.0139		0.00200	mg/kg	1	B3F2129	06/21/2023	06/23/2023	
1,3,5-Trimethylbenzene	0.198		0.00200	"	"	"	"	"	
Benzene	ND		0.00200	"	"	"	"	"	U
Ethylbenzene	ND		0.00200	"	"	"	"	"	U
Naphthalene	ND		0.00380	"	"	"	"	"	U
Toluene	ND		0.00200	"	"	"	"	"	U
Xylenes, total	0.0639		0.00200	"	"	"	"	"	
Gasoline Range Hydrocarbons	88.0		5.00	"	25	"	"	06/23/2023	

Surrogate: 1,2-Dichloroethane-d4	82.5 %		70-130			"	"	"	
----------------------------------	--------	--	--------	--	--	---	---	---	--

Origins Laboratory, Inc.



Jen Pellegrini, Project Manager

The results in this report apply to the samples analyzed in accordance with the chain of custody document. This analytical report must be reproduced in its entirety.

Eagle Environmental Consulting, LLC  
 8000 W 44th Ave  
 Wheat Ridge CO 80033

Martin C Eckert III  
 Project Number: [none]  
 Project: Noble - State #36-614

**WH-SS-02@5'**

**6/19/2023 12:27:00PM**

Analyte	Result	Min Detection Limit	Reporting Limit	Units	Dilution	Batch	Prepared	Analyzed	Notes
---------	--------	---------------------	-----------------	-------	----------	-------	----------	----------	-------

**Origins Laboratory, Inc.**  
**Y306487-02 (Soil)**

**GBTEX+TMBs by 8260D**

Surrogate: Toluene-d8	93.4 %		70-130			B3F21 29	06/21/2023	06/23/2023	
Surrogate: 4-Bromofluorobenzene	84.0 %		70-130			"	"	"	

**Metals by Saturated Paste by EPA 6010**

Calcium	1.45		0.499	meq/L	10	[CALC]	06/21/2023	06/22/2023	
Magnesium	ND		0.823	"	"	"	"	"	
Sodium	0.509		0.435	"	"	"	"	"	

**PAH by 8270D SIM**

1-Methylnaphthalene	0.577	0.00549	0.0101	mg/Kg	5	L689081	06/22/2023	06/22/2023	
2-Methylnaphthalene	0.979	0.00972	0.0101	"	"	"	"	"	
Acenaphthene	0.0775	0.00152	0.00335	"	"	"	"	"	
Anthracene	ND	0.00167	0.00335	"	"	"	"	"	
Benzo(a)anthracene	ND	0.00247	0.00335	"	"	"	"	"	
Benzo(a)pyrene	ND	0.00234	0.00335	"	"	"	"	"	
Benzo(b)fluoranthene	ND	0.00293	0.00335	"	"	"	"	"	
Benzo(k)fluoranthene	ND	0.00219	0.00335	"	"	"	"	"	
Chrysene	0.0251	0.00312	0.00335	"	"	"	"	"	
Dibenz(a,h)anthracene	ND	0.00307	0.00335	"	"	"	"	"	
Fluoranthene	ND	0.00197	0.00335	"	"	"	"	"	
Fluorene	0.125	0.00143	0.00335	"	"	"	"	"	

Origins Laboratory, Inc.



Jen Pellegrini, Project Manager

The results in this report apply to the samples analyzed in accordance with the chain of custody document. This analytical report must be reproduced in its entirety.

Eagle Environmental Consulting, LLC  
 8000 W 44th Ave  
 Wheat Ridge CO 80033

Martin C Eckert III  
 Project Number: [none]  
 Project: Noble - State #36-614

**WH-SS-02@5'**  
**6/19/2023 12:27:00PM**

Analyte	Result	Min Detection Limit	Reporting Limit	Units	Dilution	Batch	Prepared	Analyzed	Notes
---------	--------	---------------------	-----------------	-------	----------	-------	----------	----------	-------

**Waypoint Analytical, LLC.**  
**Y306487-02 (Soil)**

**PAH by 8270D SIM**

Indeno(1,2,3-cd)pyrene	ND	0.00314	0.00335	mg/Kg	5	L689081	06/22/2023	06/22/2023	
Pyrene	<b>0.00822</b>	<b>0.00322</b>	0.00335	"	"	"	"	"	

Surrogate: 2-Fluorobiphenyl	72.8 %		33-115			"	"	"	
Surrogate: 4-Terphenyl-d14	74.3 %		33-122			"	"	"	
Surrogate: Nitrobenzene-d5	58.3 %		29-110			"	"	"	

**pH in Soil by 9045D**

pH	7.72			pH Units	1	B3F2123	06/21/2023	06/22/2023	
----	------	--	--	----------	---	---------	------------	------------	--

**SAR by 20B Saturated Paste**

SAR	0.554			SAR	1	B3F2118	06/21/2023	06/22/2023	
-----	-------	--	--	-----	---	---------	------------	------------	--

**Specific Conductance Mod. 9050A**

Specific Conductance (EC)	0.256		0.00500	mmhos/cm	1	B3F2123	06/21/2023	06/22/2023	
---------------------------	-------	--	---------	----------	---	---------	------------	------------	--

**Table 915 metals by EPA 6020B**

Arsenic	2.84		0.0971	mg/kg	10	B3G0518	07/05/2023	07/06/2023	
Barium	156		9.71	"	"	"	"	"	
Cadmium	0.175		0.0971	"	"	"	"	"	

Origins Laboratory, Inc.



Jen Pellegrini, Project Manager

The results in this report apply to the samples analyzed in accordance with the chain of custody document. This analytical report must be reproduced in its entirety.

Eagle Environmental Consulting, LLC  
 8000 W 44th Ave  
 Wheat Ridge CO 80033

Martin C Eckert III  
 Project Number: [none]  
 Project: Noble - State #36-614

**WH-SS-02@5'**

**6/19/2023 12:27:00PM**

Analyte	Result	Min Detection Limit	Reporting Limit	Units	Dilution	Batch	Prepared	Analyzed	Notes
---------	--------	---------------------	-----------------	-------	----------	-------	----------	----------	-------

**Origins Laboratory, Inc.**  
**Y306487-02 (Soil)**

**Table 915 metals by EPA 6020B**

Copper	16.9		9.71	mg/kg	10	B3G0518	07/05/2023	07/06/2023	
Lead	ND		9.71	"	"	"	"	"	U
Nickel	ND		9.71	"	"	"	"	"	U
Selenium	ND		0.0971	"	"	"	"	"	U
Silver	ND		0.0971	"	"	"	"	"	U
Zinc	ND		97.1	"	"	"	"	"	U

**Total Metals by 7196A**

Chromium, Hexavalent	ND	0.247	0.507	mg/Kg	1	L691406	06/19/2023	07/07/2023	
----------------------	----	-------	-------	-------	---	---------	------------	------------	--

Origins Laboratory, Inc.



Jen Pellegrini, Project Manager

*The results in this report apply to the samples analyzed in accordance with the chain of custody document. This analytical report must be reproduced in its entirety.*

Eagle Environmental Consulting, LLC  
 8000 W 44th Ave  
 Wheat Ridge CO 80033

Martin C Eckert III  
 Project Number: [none]  
 Project: Noble - State #36-614

**WH-SS-03@5'**

**6/19/2023 12:29:00PM**

Analyte	Result	Min Detection Limit	Reporting Limit	Units	Dilution	Batch	Prepared	Analyzed	Notes
---------	--------	---------------------	-----------------	-------	----------	-------	----------	----------	-------

**Origins Laboratory, Inc.**  
**Y306487-03 (Soil)**

**Boron (DTPA Sorbitol)**

Boron	0.112		0.0984	mg/L	1	B3F2113	06/21/2023	06/22/2023	
-------	-------	--	--------	------	---	---------	------------	------------	--

**DRO/ORO by EPA 8015D**

Diesel (C10-C28)	ND		25.0	mg/kg	1	B3F2017	06/20/2023	06/23/2023	U
Residual Range Organics (C28-C40)	ND		100	"	"	"	"	"	U

Surrogate: o-Terphenyl	94.6 %		50-150			"	"	"	
------------------------	--------	--	--------	--	--	---	---	---	--

**GBTEX+TMBs by 8260D**

1,2,4-Trimethylbenzene	ND		0.00200	mg/kg	1	B3F2129	06/21/2023	06/23/2023	U
1,3,5-Trimethylbenzene	ND		0.00200	"	"	"	"	"	U
Benzene	ND		0.00200	"	"	"	"	"	U
Ethylbenzene	ND		0.00200	"	"	"	"	"	U
Naphthalene	ND		0.00380	"	"	"	"	"	U
Toluene	ND		0.00200	"	"	"	"	"	U
Xylenes, total	ND		0.00200	"	"	"	"	"	U
Gasoline Range Hydrocarbons	ND		0.200	"	"	"	"	"	U

Origins Laboratory, Inc.



Jen Pellegrini, Project Manager

*The results in this report apply to the samples analyzed in accordance with the chain of custody document. This analytical report must be reproduced in its entirety.*

Eagle Environmental Consulting, LLC  
 8000 W 44th Ave  
 Wheat Ridge CO 80033

Martin C Eckert III  
 Project Number: [none]  
 Project: Noble - State #36-614

**WH-SS-03@5'**

**6/19/2023 12:29:00PM**

Analyte	Result	Min Detection Limit	Reporting Limit	Units	Dilution	Batch	Prepared	Analyzed	Notes
---------	--------	---------------------	-----------------	-------	----------	-------	----------	----------	-------

**Origins Laboratory, Inc.**  
**Y306487-03 (Soil)**

**GBTEX+TMBs by 8260D**

Surrogate: 1,2-Dichloroethane-d4	91.4 %		70-130			B3F21 29	06/21/2023	06/23/2023	
Surrogate: Toluene-d8	95.9 %		70-130			"	"	"	
Surrogate: 4-Bromofluorobenzene	82.5 %		70-130			"	"	"	

**Metals by Saturated Paste by EPA 6010**

Calcium	1.47		0.499	meq/L	10	[CALC]	06/21/2023	06/22/2023	
Magnesium	ND		0.823	"	"	"	"	"	
Sodium	ND		0.435	"	"	"	"	"	

**PAH by 8270D SIM**

1-Methylnaphthalene	0.00509	0.00109	0.00201	mg/Kg	1	L689081	06/22/2023	06/22/2023	
2-Methylnaphthalene	0.00835	0.00194	0.00201	"	"	"	"	"	
Acenaphthene	0.00123	0.000304	0.00067	"	"	"	"	"	
Anthracene	ND	0.000334	0.00067	"	"	"	"	"	
Benzo(a)anthracene	ND	0.000493	0.00067	"	"	"	"	"	
Benzo(a)pyrene	ND	0.000468	0.00067	"	"	"	"	"	
Benzo(b)fluoranthene	ND	0.000585	0.00067	"	"	"	"	"	
Benzo(k)fluoranthene	ND	0.000437	0.00067	"	"	"	"	"	
Chrysene	ND	0.000624	0.00067	"	"	"	"	"	
Dibenz(a,h)anthracene	ND	0.000614	0.00067	"	"	"	"	"	
Fluoranthene	ND	0.000394	0.00067	"	"	"	"	"	

Origins Laboratory, Inc.



Jen Pellegrini, Project Manager

The results in this report apply to the samples analyzed in accordance with the chain of custody document. This analytical report must be reproduced in its entirety.

Eagle Environmental Consulting, LLC  
 8000 W 44th Ave  
 Wheat Ridge CO 80033

Martin C Eckert III  
 Project Number: [none]  
 Project: Noble - State #36-614

**WH-SS-03@5'**  
**6/19/2023 12:29:00PM**

Analyte	Result	Min Detection Limit	Reporting Limit	Units	Dilution	Batch	Prepared	Analyzed	Notes
---------	--------	---------------------	-----------------	-------	----------	-------	----------	----------	-------

**Waypoint Analytical, LLC.**  
**Y306487-03 (Soil)**

**PAH by 8270D SIM**

Fluorene	0.00224	0.000286	0.00067	mg/Kg	1	L689081	06/22/2023	06/22/2023	
Indeno(1,2,3-cd)pyrene	ND	0.000627	0.00067	"	"	"	"	"	
Pyrene	ND	0.000643	0.00067	"	"	"	"	"	

Surrogate: 2-Fluorobiphenyl	58.6 %		33-115			"	"	"	
Surrogate: 4-Terphenyl-d14	52 %		33-122			"	"	"	
Surrogate: Nitrobenzene-d5	55.3 %		29-110			"	"	"	

**pH in Soil by 9045D**

pH	8.35			pH Units	1	B3F2123	06/21/2023	06/22/2023	
----	------	--	--	----------	---	---------	------------	------------	--

**SAR by 20B Saturated Paste**

SAR	0.356			SAR	1	B3F2118	06/21/2023	06/22/2023	
-----	-------	--	--	-----	---	---------	------------	------------	--

**Specific Conductance Mod. 9050A**

Specific Conductance (EC)	0.258		0.00500	mmhos/cm	1	B3F2123	06/21/2023	06/22/2023	
---------------------------	-------	--	---------	----------	---	---------	------------	------------	--

Origins Laboratory, Inc.



Jen Pellegrini, Project Manager

*The results in this report apply to the samples analyzed in accordance with the chain of custody document. This analytical report must be reproduced in its entirety.*

Eagle Environmental Consulting, LLC  
 8000 W 44th Ave  
 Wheat Ridge CO 80033

Martin C Eckert III  
 Project Number: [none]  
 Project: Noble - State #36-614

**WH-SS-04@5'**

**6/19/2023 12:31:00PM**

Analyte	Result	Min Detection Limit	Reporting Limit	Units	Dilution	Batch	Prepared	Analyzed	Notes
---------	--------	---------------------	-----------------	-------	----------	-------	----------	----------	-------

**Origins Laboratory, Inc.**  
**Y306487-04 (Soil)**

**Boron (DTPA Sorbitol)**

Boron	ND		0.0991	mg/L	1	B3F2113	06/21/2023	06/22/2023	U
-------	----	--	--------	------	---	---------	------------	------------	---

**DRO/ORO by EPA 8015D**

Diesel (C10-C28)	ND		25.0	mg/kg	1	B3F2017	06/20/2023	06/23/2023	U
Residual Range Organics (C28-C40)	ND		100	"	"	"	"	"	U

Surrogate: <i>o</i> -Terphenyl	96.4 %		50-150			"	"	"	
--------------------------------	--------	--	--------	--	--	---	---	---	--

**GBTEX+TMBs by 8260D**

1,2,4-Trimethylbenzene	ND		0.00200	mg/kg	1	B3F2129	06/21/2023	06/23/2023	U
1,3,5-Trimethylbenzene	ND		0.00200	"	"	"	"	"	U
Benzene	ND		0.00200	"	"	"	"	"	U
Ethylbenzene	ND		0.00200	"	"	"	"	"	U
Naphthalene	ND		0.00380	"	"	"	"	"	U
Toluene	ND		0.00200	"	"	"	"	"	U
Xylenes, total	ND		0.00200	"	"	"	"	"	U
Gasoline Range Hydrocarbons	<b>0.991</b>		0.200	"	"	"	"	"	

Origins Laboratory, Inc.



Jen Pellegrini, Project Manager

*The results in this report apply to the samples analyzed in accordance with the chain of custody document. This analytical report must be reproduced in its entirety.*

Eagle Environmental Consulting, LLC  
 8000 W 44th Ave  
 Wheat Ridge CO 80033

Martin C Eckert III  
 Project Number: [none]  
 Project: Noble - State #36-614

**WH-SS-04@5'**

**6/19/2023 12:31:00PM**

Analyte	Result	Min Detection Limit	Reporting Limit	Units	Dilution	Batch	Prepared	Analyzed	Notes
---------	--------	---------------------	-----------------	-------	----------	-------	----------	----------	-------

**Origins Laboratory, Inc.**  
**Y306487-04 (Soil)**

**GBTEX+TMBs by 8260D**

Surrogate: 1,2-Dichloroethane-d4	90.5 %		70-130			B3F21 29	06/21/2023	06/23/2023	
Surrogate: Toluene-d8	94.5 %		70-130			"	"	"	
Surrogate: 4-Bromofluorobenzene	83.4 %		70-130			"	"	"	

**Metals by Saturated Paste by EPA 6010**

Calcium	1.12		0.499	meq/L	10	[CALC]	06/21/2023	06/22/2023	
Magnesium	ND		0.823	"	"	"	"	"	
Sodium	ND		0.435	"	"	"	"	"	

**PAH by 8270D SIM**

1-Methylnaphthalene	0.00155	0.00109	0.00201	mg/Kg	1	L689081	06/22/2023	06/22/2023	J
2-Methylnaphthalene	0.00297	0.00194	0.00201	"	"	"	"	"	
Acenaphthene	ND	0.000304	0.00067	"	"	"	"	"	
Anthracene	ND	0.000334	0.00067	"	"	"	"	"	
Benzo(a)anthracene	ND	0.000493	0.00067	"	"	"	"	"	
Benzo(a)pyrene	ND	0.000468	0.00067	"	"	"	"	"	
Benzo(b)fluoranthene	ND	0.000585	0.00067	"	"	"	"	"	
Benzo(k)fluoranthene	ND	0.000437	0.00067	"	"	"	"	"	
Chrysene	ND	0.000624	0.00067	"	"	"	"	"	
Dibenz(a,h)anthracene	ND	0.000614	0.00067	"	"	"	"	"	

Origins Laboratory, Inc.



Jen Pellegrini, Project Manager

The results in this report apply to the samples analyzed in accordance with the chain of custody document. This analytical report must be reproduced in its entirety.

Eagle Environmental Consulting, LLC  
 8000 W 44th Ave  
 Wheat Ridge CO 80033

Martin C Eckert III  
 Project Number: [none]  
 Project: Noble - State #36-614

**WH-SS-04@5'**  
**6/19/2023 12:31:00PM**

Analyte	Result	Min Detection Limit	Reporting Limit	Units	Dilution	Batch	Prepared	Analyzed	Notes
---------	--------	---------------------	-----------------	-------	----------	-------	----------	----------	-------

**Waypoint Analytical, LLC.**  
**Y306487-04 (Soil)**

**PAH by 8270D SIM**

Fluoranthene	ND	0.000394	0.00067	mg/Kg	1	L689081	06/22/2023	06/22/2023	
Fluorene	<b>0.000659</b>	<b>0.000286</b>	0.00067	"	"	"	"	"	J
Indeno(1,2,3-cd)pyrene	ND	0.000627	0.00067	"	"	"	"	"	
Pyrene	ND	0.000643	0.00067	"	"	"	"	"	

Surrogate: 2-Fluorobiphenyl	59.5 %		33-115			"	"	"	
Surrogate: 4-Terphenyl-d14	62.8 %		33-122			"	"	"	
Surrogate: Nitrobenzene-d5	54.1 %		29-110			"	"	"	

**pH in Soil by 9045D**

pH	<b>8.38</b>			pH Units	1	B3F2123	06/21/2023	06/22/2023	
----	-------------	--	--	----------	---	---------	------------	------------	--

**SAR by 20B Saturated Paste**

SAR	<b>0.360</b>			SAR	1	B3F2118	06/21/2023	06/22/2023	
-----	--------------	--	--	-----	---	---------	------------	------------	--

**Specific Conductance Mod. 9050A**

Specific Conductance (EC)	<b>0.212</b>		0.00500	mmhos/cm	1	B3F2123	06/21/2023	06/22/2023	
---------------------------	--------------	--	---------	----------	---	---------	------------	------------	--

Origins Laboratory, Inc.



Jen Pellegrini, Project Manager

*The results in this report apply to the samples analyzed in accordance with the chain of custody document. This analytical report must be reproduced in its entirety.*

Eagle Environmental Consulting, LLC  
 8000 W 44th Ave  
 Wheat Ridge CO 80033

Martin C Eckert III  
 Project Number: [none]  
 Project: Noble - State #36-614

**WH-FS-01@6'**

**6/19/2023 12:33:00PM**

Analyte	Result	Min Detection Limit	Reporting Limit	Units	Dilution	Batch	Prepared	Analyzed	Notes
---------	--------	---------------------	-----------------	-------	----------	-------	----------	----------	-------

**Origins Laboratory, Inc.**  
**Y306487-05 (Soil)**

**Boron (DTPA Sorbitol)**

Boron	0.139		0.0994	mg/L	1	B3F2113	06/21/2023	06/22/2023	
-------	-------	--	--------	------	---	---------	------------	------------	--

**DRO/ORO by EPA 8015D**

Diesel (C10-C28)	128		25.0	mg/kg	1	B3F2017	06/20/2023	06/23/2023	
Residual Range Organics (C28-C40)	ND		100	"	"	"	"	"	U

Surrogate: o-Terphenyl	100 %		50-150			"	"	"	
------------------------	-------	--	--------	--	--	---	---	---	--

**GBTEX+TMBs by 8260D**

1,2,4-Trimethylbenzene	ND		0.00200	mg/kg	1	B3F2129	06/21/2023	06/23/2023	U
1,3,5-Trimethylbenzene	0.00620		0.00200	"	"	"	"	"	
Benzene	ND		0.00200	"	"	"	"	"	U
Ethylbenzene	ND		0.00200	"	"	"	"	"	U
Naphthalene	ND		0.00380	"	"	"	"	"	U
Toluene	ND		0.00200	"	"	"	"	"	U
Xylenes, total	ND		0.00200	"	"	"	"	"	U
Gasoline Range Hydrocarbons	4.76		0.200	"	"	"	"	"	

Surrogate: 1,2-Dichloroethane-d4	94.4 %		70-130			"	"	"	
----------------------------------	--------	--	--------	--	--	---	---	---	--

Origins Laboratory, Inc.



The results in this report apply to the samples analyzed in accordance with the chain of custody document. This analytical report must be reproduced in its entirety.

Jen Pellegrini, Project Manager

Eagle Environmental Consulting, LLC  
 8000 W 44th Ave  
 Wheat Ridge CO 80033

Martin C Eckert III  
 Project Number: [none]  
 Project: Noble - State #36-614

**WH-FS-01@6'**

**6/19/2023 12:33:00PM**

Analyte	Result	Min Detection Limit	Reporting Limit	Units	Dilution	Batch	Prepared	Analyzed	Notes
---------	--------	---------------------	-----------------	-------	----------	-------	----------	----------	-------

**Origins Laboratory, Inc.**  
**Y306487-05 (Soil)**

**GBTEX+TMBs by 8260D**

Surrogate: Toluene-d8	94.5 %		70-130			B3F21 29	06/21/2023	06/23/2023	
Surrogate: 4-Bromofluorobenzene	87.6 %		70-130			"	"	"	

**Metals by Saturated Paste by EPA 6010**

Calcium	1.21		0.499	meq/L	10	[CALC]	06/21/2023	06/22/2023	
Magnesium	ND		0.823	"	"	"	"	"	
Sodium	1.25		0.435	"	"	"	"	"	

**PAH by 8270D SIM**

1-Methylnaphthalene	0.0475	0.00109	0.00201	mg/Kg	1	L689081	06/22/2023	06/22/2023	
2-Methylnaphthalene	0.0517	0.00194	0.00201	"	"	"	"	"	
Acenaphthene	0.017	0.000304	0.00067	"	"	"	"	"	
Anthracene	ND	0.000334	0.00067	"	"	"	"	"	
Benzo(a)anthracene	0.00304	0.000493	0.00067	"	"	"	"	"	
Benzo(a)pyrene	ND	0.000468	0.00067	"	"	"	"	"	
Benzo(b)fluoranthene	ND	0.000585	0.00067	"	"	"	"	"	
Benzo(k)fluoranthene	ND	0.000437	0.00067	"	"	"	"	"	
Chrysene	0.00581	0.000624	0.00067	"	"	"	"	"	
Dibenz(a,h)anthracene	ND	0.000614	0.00067	"	"	"	"	"	
Fluoranthene	0.00067	0.000394	0.00067	"	"	"	"	"	
Fluorene	0.029	0.000286	0.00067	"	"	"	"	"	

Origins Laboratory, Inc.



Jen Pellegrini, Project Manager

The results in this report apply to the samples analyzed in accordance with the chain of custody document. This analytical report must be reproduced in its entirety.

Eagle Environmental Consulting, LLC  
 8000 W 44th Ave  
 Wheat Ridge CO 80033

Martin C Eckert III  
 Project Number: [none]  
 Project: Noble - State #36-614

**WH-FS-01@6'**

**6/19/2023 12:33:00PM**

Analyte	Result	Min Detection Limit	Reporting Limit	Units	Dilution	Batch	Prepared	Analyzed	Notes
---------	--------	---------------------	-----------------	-------	----------	-------	----------	----------	-------

**Waypoint Analytical, LLC.**  
**Y306487-05 (Soil)**

**PAH by 8270D SIM**

Indeno(1,2,3-cd)pyrene	ND	0.000627	0.00067	mg/Kg	1	L689081	06/22/2023	06/22/2023	
Pyrene	<b>0.00287</b>	<b>0.000643</b>	0.00067	"	"	"	"	"	

Surrogate: 2-Fluorobiphenyl	60 %		33-115			"	"	"	
Surrogate: 4-Terphenyl-d14	52.3 %		33-122			"	"	"	
Surrogate: Nitrobenzene-d5	60.3 %		29-110			"	"	"	

**pH in Soil by 9045D**

pH	<b>8.40</b>			pH Units	1	B3F2123	06/21/2023	06/22/2023	
----	-------------	--	--	----------	---	---------	------------	------------	--

**SAR by 20B Saturated Paste**

SAR	<b>1.45</b>			SAR	1	B3F2118	06/21/2023	06/22/2023	
-----	-------------	--	--	-----	---	---------	------------	------------	--

**Specific Conductance Mod. 9050A**

Specific Conductance (EC)	<b>0.292</b>		0.00500	mmhos/cm	1	B3F2123	06/21/2023	06/22/2023	
---------------------------	--------------	--	---------	----------	---	---------	------------	------------	--

**Table 915 metals by EPA 6020B**

Arsenic	<b>2.70</b>		0.0870	mg/kg	10	B3G0518	07/05/2023	07/06/2023	
Barium	<b>4830</b>		8.70	"	"	"	"	"	
Cadmium	<b>0.171</b>		0.0870	"	"	"	"	"	

Origins Laboratory, Inc.



Jen Pellegrini, Project Manager

The results in this report apply to the samples analyzed in accordance with the chain of custody document. This analytical report must be reproduced in its entirety.

Eagle Environmental Consulting, LLC  
 8000 W 44th Ave  
 Wheat Ridge CO 80033

Martin C Eckert III  
 Project Number: [none]  
 Project: Noble - State #36-614

**WH-FS-01@6'**

**6/19/2023 12:33:00PM**

Analyte	Result	Min Detection Limit	Reporting Limit	Units	Dilution	Batch	Prepared	Analyzed	Notes
---------	--------	---------------------	-----------------	-------	----------	-------	----------	----------	-------

**Origins Laboratory, Inc.**  
**Y306487-05 (Soil)**

**Table 915 metals by EPA 6020B**

Copper	15.9		8.70	mg/kg	10	B3G0518	07/05/2023	07/06/2023	
Lead	9.65		8.70	"	"	"	"	"	
Nickel	ND		8.70	"	"	"	"	"	U
Selenium	0.142		0.0870	"	"	"	"	"	
Silver	ND		0.0870	"	"	"	"	"	U
Zinc	ND		87.0	"	"	"	"	"	U

**Total Metals by 7196A**

Chromium, Hexavalent	0.282	0.244	0.5	mg/Kg	1	L691406	06/19/2023	07/07/2023	J
----------------------	-------	-------	-----	-------	---	---------	------------	------------	---

Origins Laboratory, Inc.



Jen Pellegrini, Project Manager

*The results in this report apply to the samples analyzed in accordance with the chain of custody document. This analytical report must be reproduced in its entirety.*

Eagle Environmental Consulting, LLC  
 8000 W 44th Ave  
 Wheat Ridge CO 80033

Martin C Eckert III  
 Project Number: [none]  
 Project: Noble - State #36-614

**Extractable Petroleum Hydrocarbons by 8015D - Quality Control**  
**Origins Laboratory, Inc.**

Analyte	Result	Reporting Limit	Units	Spike Level	Source Result	%REC	%REC Limits	RPD	RPD Limit	Notes
<b>Batch B3F2017 - EPA 3550B</b>										
<b>Blank (B3F2017-BLK1)</b>										
					Prepared: 06/20/2023 Analyzed: 06/23/2023					
Diesel (C10-C28)	ND	25.0	mg/kg							U
Residual Range Organics (C28-C40)	ND	100	"							U
Surrogate: o-Terphenyl	24		"	24.9		96.3	50-150			

Origins Laboratory, Inc.



Jen Pellegrini, Project Manager

*The results in this report apply to the samples analyzed in accordance with the chain of custody document. This analytical report must be reproduced in its entirety.*

Eagle Environmental Consulting, LLC  
 8000 W 44th Ave  
 Wheat Ridge CO 80033

Martin C Eckert III  
 Project Number: [none]  
 Project: Noble - State #36-614

**Extractable Petroleum Hydrocarbons by 8015D - Quality Control**  
**Origins Laboratory, Inc.**

Analyte	Result	Reporting Limit	Units	Spike Level	Source Result	%REC	%REC Limits	RPD	RPD Limit	Notes
---------	--------	-----------------	-------	-------------	---------------	------	-------------	-----	-----------	-------

**Batch B3F2017 - EPA 3550B**

**LCS (B3F2017-BS1)**

Prepared: 06/20/2023 Analyzed: 06/23/2023

Diesel (C10-C28)	851	50.0	mg/kg	1000		85.1	70-130			
Residual Range Organics (C28-C40)	1020	200	"	1000		102	70-130			
Surrogate: o-Terphenyl	47		"	49.8		94.7	50-150			

Origins Laboratory, Inc.



Jen Pellegrini, Project Manager

*The results in this report apply to the samples analyzed in accordance with the chain of custody document. This analytical report must be reproduced in its entirety.*

Eagle Environmental Consulting, LLC  
 8000 W 44th Ave  
 Wheat Ridge CO 80033

Martin C Eckert III  
 Project Number: [none]  
 Project: Noble - State #36-614

**Extractable Petroleum Hydrocarbons by 8015D - Quality Control**  
**Origins Laboratory, Inc.**

Analyte	Result	Reporting Limit	Units	Spike Level	Source Result	%REC	%REC Limits	RPD	RPD Limit	Notes
---------	--------	-----------------	-------	-------------	---------------	------	-------------	-----	-----------	-------

**Batch B3F2017 - EPA 3550B**

<b>Matrix Spike (B3F2017-MS1)</b>	<b>Source: Y306479-01</b>			Prepared: 06/20/2023 Analyzed: 06/23/2023						
Diesel (C10-C28)	874	50.0	mg/kg	1000	ND	87.4	70-130			
Residual Range Organics (C28-C40)	1050	200	"	1000	ND	105	70-130			
Surrogate: o-Terphenyl	47		"	49.8		94.5	50-150			

Origins Laboratory, Inc.



Jen Pellegrini, Project Manager

*The results in this report apply to the samples analyzed in accordance with the chain of custody document. This analytical report must be reproduced in its entirety.*

Eagle Environmental Consulting, LLC  
 8000 W 44th Ave  
 Wheat Ridge CO 80033

Martin C Eckert III  
 Project Number: [none]  
 Project: Noble - State #36-614

**Extractable Petroleum Hydrocarbons by 8015D - Quality Control**  
**Origins Laboratory, Inc.**

Analyte	Result	Reporting Limit	Units	Spike Level	Source Result	%REC	%REC Limits	RPD	RPD Limit	Notes
---------	--------	-----------------	-------	-------------	---------------	------	-------------	-----	-----------	-------

**Batch B3F2017 - EPA 3550B**

<b>Matrix Spike Dup (B3F2017-MSD1)</b>	<b>Source: Y306479-01</b>			<b>Prepared: 06/20/2023 Analyzed: 06/23/2023</b>						
Diesel (C10-C28)	891	50.0	mg/kg	1000	ND	89.1	70-130	1.90	35	
Residual Range Organics (C28-C40)	1050	200	"	1000	ND	105	70-130	0.489	35	
<i>Surrogate: o-Terphenyl</i>	46		"	49.8		92.6	50-150			

Origins Laboratory, Inc.



Jen Pellegrini, Project Manager

*The results in this report apply to the samples analyzed in accordance with the chain of custody document. This analytical report must be reproduced in its entirety.*

Eagle Environmental Consulting, LLC  
 8000 W 44th Ave  
 Wheat Ridge CO 80033

Martin C Eckert III  
 Project Number: [none]  
 Project: Noble - State #36-614

**Extractable Petroleum Hydrocarbons by 8015D - Quality Control**  
**Origins Laboratory, Inc.**

Analyte	Result	Reporting Limit	Units	Spike Level	Source Result	%REC	%REC Limits	RPD	RPD Limit	Notes
---------	--------	-----------------	-------	-------------	---------------	------	-------------	-----	-----------	-------

**Batch B3F2129 - EPA 5030 (soil)**

**Blank (B3F2129-BLK1)**

Prepared: 06/21/2023 Analyzed: 06/23/2023

1,2,4-Trimethylbenzene	ND	0.00200	mg/kg							U
1,3,5-Trimethylbenzene	ND	0.00200	"							U
Benzene	ND	0.00200	"							U
Ethylbenzene	ND	0.00200	"							U
Naphthalene	ND	0.00380	"							U
Toluene	ND	0.00200	"							U
Xylenes, total	ND	0.00200	"							U
Gasoline Range Hydrocarbons	ND	0.200	"							U
Surrogate: 1,2-Dichloroethane-d4	0.10		"	0.125	81.9		70-130			
Surrogate: Toluene-d8	0.12		"	0.125	96.6		70-130			
Surrogate: 4-Bromofluorobenzene	0.10		"	0.125	81.6		70-130			

Origins Laboratory, Inc.



Jen Pellegrini, Project Manager

*The results in this report apply to the samples analyzed in accordance with the chain of custody document. This analytical report must be reproduced in its entirety.*

Eagle Environmental Consulting, LLC  
 8000 W 44th Ave  
 Wheat Ridge CO 80033

Martin C Eckert III  
 Project Number: [none]  
 Project: Noble - State #36-614

**Volatile Organic Compounds by GC/MS SW846 8260D - Quality Control**  
**Origins Laboratory, Inc.**

Analyte	Result	Reporting Limit	Units	Spike Level	Source Result	%REC	%REC Limits	RPD	RPD Limit	Notes
---------	--------	-----------------	-------	-------------	---------------	------	-------------	-----	-----------	-------

Batch B3F2129 - EPA 5030 (soil)

**LCS (B3F2129-BS1)**

Prepared: 06/21/2023 Analyzed: 06/23/2023

1,2,4-Trimethylbenzene	0.114	0.00200	mg/kg	0.100		114	70-130			
1,3,5-Trimethylbenzene	0.117	0.00200	"	0.100		117	70-130			
Benzene	0.119	0.00200	"	0.100		119	70-130			
Ethylbenzene	0.109	0.00200	"	0.100		109	70-130			
Naphthalene	0.0941	0.00380	"	0.100		94.1	70-130			
Toluene	0.108	0.00200	"	0.100		108	70-130			
o-Xylene	0.107	0.00200	"	0.100		107	70-130			
m,p-Xylene	0.228	0.00400	"	0.200		114	70-130			
Surrogate: 1,2-Dichloroethane-d4	0.10		"	0.125		80.5	70-130			
Surrogate: Toluene-d8	0.12		"	0.125		97.5	70-130			
Surrogate: 4-Bromofluorobenzene	0.11		"	0.125		87.3	70-130			

Origins Laboratory, Inc.



Jen Pellegrini, Project Manager

*The results in this report apply to the samples analyzed in accordance with the chain of custody document. This analytical report must be reproduced in its entirety.*

Eagle Environmental Consulting, LLC  
 8000 W 44th Ave  
 Wheat Ridge CO 80033

Martin C Eckert III  
 Project Number: [none]  
 Project: Noble - State #36-614

**Volatile Organic Compounds by GC/MS SW846 8260D - Quality Control**  
**Origins Laboratory, Inc.**

Analyte	Result	Reporting Limit	Units	Spike Level	Source Result	%REC	%REC Limits	RPD	RPD Limit	Notes
---------	--------	-----------------	-------	-------------	---------------	------	-------------	-----	-----------	-------

Batch B3F2129 - EPA 5030 (soil)

Matrix Spike (B3F2129-MS1)	Source: Y306479-01			Prepared: 06/21/2023 Analyzed: 06/28/2023						
1,2,4-Trimethylbenzene	0.0732	0.00200	mg/kg	0.100	ND	73.2	70-130			
1,3,5-Trimethylbenzene	0.0740	0.00200	"	0.100	ND	74.0	70-130			
Benzene	0.0494	0.00200	"	0.100	ND	49.4	70-130			QM-07
Ethylbenzene	0.0758	0.00200	"	0.100	ND	75.8	70-130			
Naphthalene	0.0672	0.00380	"	0.100	ND	67.2	70-130			QM-07
Toluene	0.0645	0.00200	"	0.100	ND	64.5	70-130			QM-07
o-Xylene	0.0800	0.00200	"	0.100	ND	80.0	70-130			
m,p-Xylene	0.148	0.00400	"	0.200	ND	73.8	70-130			
Surrogate: 1,2-Dichloroethane-d4	0.11		"	0.125		86.6	70-130			
Surrogate: Toluene-d8	0.12		"	0.125		96.1	70-130			
Surrogate: 4-Bromofluorobenzene	0.11		"	0.125		91.0	70-130			

Origins Laboratory, Inc.



Jen Pellegrini, Project Manager

*The results in this report apply to the samples analyzed in accordance with the chain of custody document. This analytical report must be reproduced in its entirety.*

Eagle Environmental Consulting, LLC  
 8000 W 44th Ave  
 Wheat Ridge CO 80033

Martin C Eckert III  
 Project Number: [none]  
 Project: Noble - State #36-614

**Volatile Organic Compounds by GC/MS SW846 8260D - Quality Control**  
**Origins Laboratory, Inc.**

Analyte	Result	Reporting Limit	Units	Spike Level	Source Result	%REC	%REC Limits	RPD	RPD Limit	Notes
---------	--------	-----------------	-------	-------------	---------------	------	-------------	-----	-----------	-------

Batch B3F2129 - EPA 5030 (soil)

Matrix Spike Dup (B3F2129-MSD1)	Source: Y306479-01			Prepared: 06/21/2023 Analyzed: 06/27/2023						
1,2,4-Trimethylbenzene	0.0450	0.00200	mg/kg	0.100	ND	45.0	70-130	47.8	20	QM-07
1,3,5-Trimethylbenzene	0.0459	0.00200	"	0.100	ND	45.9	70-130	46.8	20	QM-07
Benzene	0.0735	0.00200	"	0.100	ND	73.5	70-130	39.3	20	QM-07
Ethylbenzene	0.0576	0.00200	"	0.100	ND	57.6	70-130	27.3	20	QM-07
Naphthalene	0.0708	0.00380	"	0.100	ND	70.8	70-130	5.27	20	
Toluene	0.0699	0.00200	"	0.100	ND	69.9	70-130	8.06	20	QM-07
o-Xylene	0.0601	0.00200	"	0.100	ND	60.1	70-130	28.5	20	QM-07
m,p-Xylene	0.110	0.00400	"	0.200	ND	54.8	70-130	29.6	20	QM-07
Surrogate: 1,2-Dichloroethane-d4	0.12		"	0.125		93.4	70-130			
Surrogate: Toluene-d8	0.13		"	0.125		103	70-130			
Surrogate: 4-Bromofluorobenzene	0.13		"	0.125		102	70-130			

Origins Laboratory, Inc.



Jen Pellegrini, Project Manager

The results in this report apply to the samples analyzed in accordance with the chain of custody document. This analytical report must be reproduced in its entirety.

Eagle Environmental Consulting, LLC  
 8000 W 44th Ave  
 Wheat Ridge CO 80033

Martin C Eckert III  
 Project Number: [none]  
 Project: Noble - State #36-614

**Volatile Organic Compounds by GC/MS SW846 8260D - Quality Control**  
**Origins Laboratory, Inc.**

Analyte	Result	Reporting Limit	Units	Spike Level	Source Result	%REC	%REC Limits	RPD	RPD Limit	Notes
---------	--------	-----------------	-------	-------------	---------------	------	-------------	-----	-----------	-------

**Metals by EPA 6000/7000 Series Methods - Quality Control**  
**Origins Laboratory, Inc.**

Analyte	Result	Reporting Limit	Units	Spike Level	Source Result	%REC	%REC Limits	RPD	RPD Limit	Notes
---------	--------	-----------------	-------	-------------	---------------	------	-------------	-----	-----------	-------

**Batch B3G0518 - EPA 3050B**

**Blank (B3G0518-BLK1)**

Prepared: 07/05/2023 Analyzed: 07/06/2023

Arsenic	ND	0.000100	mg/kg							U
Barium	ND	0.0100	"							U
Cadmium	ND	0.000100	"							U
Copper	ND	0.0100	"							U
Lead	ND	0.0100	"							U
Nickel	ND	0.0100	"							U
Selenium	ND	0.000100	"							U
Silver	ND	0.000100	"							U
Zinc	ND	0.100	"							U

**LCS (B3G0518-BS1)**

Prepared: 07/05/2023 Analyzed: 07/06/2023

Arsenic	0.0529	0.000100	mg/kg	0.0500		106	80-120			
Barium	5.36	0.0100	"	5.00		107	80-120			
Cadmium	0.0523	0.000100	"	0.0500		105	80-120			
Copper	0.501	0.0100	"	0.500		100	80-120			
Lead	0.0520	0.0100	"	0.0500		104	80-120			
Nickel	0.0496	0.0100	"	0.0500		99.3	80-120			
Selenium	0.0508	0.000100	"	0.0500		102	80-120			
Silver	0.0477	0.000100	"	0.0500		95.3	80-120			
Zinc	0.557	0.100	"	0.500		111	80-120			

**Matrix Spike (B3G0518-MS1)**

Source: Y306487-02

Prepared: 07/05/2023 Analyzed: 07/06/2023

Origins Laboratory, Inc.



Jen Pellegrini, Project Manager

*The results in this report apply to the samples analyzed in accordance with the chain of custody document. This analytical report must be reproduced in its entirety.*

Eagle Environmental Consulting, LLC  
 8000 W 44th Ave  
 Wheat Ridge CO 80033

Martin C Eckert III  
 Project Number: [none]  
 Project: Noble - State #36-614

**Metals by EPA 6000/7000 Series Methods - Quality Control**  
**Origins Laboratory, Inc.**

Analyte	Result	Reporting Limit	Units	Spike Level	Source Result	%REC	%REC Limits	RPD	RPD Limit	Notes
---------	--------	-----------------	-------	-------------	---------------	------	-------------	-----	-----------	-------

**Batch B3G0518 - EPA 3050B**

<b>Matrix Spike (B3G0518-MS1)</b>		<b>Source: Y306487-02</b>			Prepared: 07/05/2023 Analyzed: 07/06/2023					
Arsenic	6.76	0.0873	mg/kg	4.37	2.84	89.8	75-125			
Barium	684	8.73	"	437	156	121	75-125			
Cadmium	4.96	0.0873	"	4.37	0.175	110	75-125			
Copper	57.9	8.73	"	43.7	16.9	93.9	75-125			
Lead	13.7	8.73	"	4.37	5.44	189	75-125			QM-07
Nickel	7.98	8.73	"	4.37	4.46	80.8	75-125			U
Selenium	4.37	0.0873	"	4.37	0.0660	98.5	75-125			
Silver	4.14	0.0873	"	4.37	0.0252	94.2	75-125			
Zinc	76.9	87.3	"	43.7	26.0	117	75-125			U

<b>Matrix Spike Dup (B3G0518-MSD1)</b>		<b>Source: Y306487-02</b>			Prepared: 07/05/2023 Analyzed: 07/06/2023					
Arsenic	6.51	0.0966	mg/kg	4.83	2.84	75.8	75-125	3.88	20	
Barium	623	9.66	"	483	156	96.9	75-125	9.26	20	
Cadmium	4.80	0.0966	"	4.83	0.175	95.9	75-125	3.19	20	
Copper	58.9	9.66	"	48.3	16.9	87.0	75-125	1.71	20	
Lead	10.7	9.66	"	4.83	5.44	108	75-125	25.0	20	QM-07
Nickel	7.54	9.66	"	4.83	4.46	63.9	75-125	5.64	20	U
Selenium	4.42	0.0966	"	4.83	0.0660	90.1	75-125	1.19	20	
Silver	4.30	0.0966	"	4.83	0.0252	88.6	75-125	3.89	20	
Zinc	70.8	96.6	"	48.3	26.0	92.8	75-125	8.21	20	U

Origins Laboratory, Inc.



Jen Pellegrini, Project Manager

*The results in this report apply to the samples analyzed in accordance with the chain of custody document. This analytical report must be reproduced in its entirety.*

Eagle Environmental Consulting, LLC  
 8000 W 44th Ave  
 Wheat Ridge CO 80033

Martin C Eckert III  
 Project Number: [none]  
 Project: Noble - State #36-614

**Classical Chemistry Parameters - Quality Control**  
**Origins Laboratory, Inc.**

Analyte	Result	Reporting Limit	Units	Spike Level	Source Result	%REC	%REC Limits	RPD	RPD Limit	Notes
<b>Batch B3F2113 - DTPA Sorbitol Preparation</b>										
<b>Blank (B3F2113-BLK1)</b>					Prepared: 06/21/2023 Analyzed: 06/22/2023					
Boron	ND	0.100	mg/L							U
<b>Duplicate (B3F2113-DUP1)</b>		<b>Source: Y306475-01</b>			Prepared: 06/21/2023 Analyzed: 06/22/2023					
Boron	ND	0.988	mg/L		ND			50		U
<b>Batch B3F2118 - Saturated Paste Metals</b>										
<b>Blank (B3F2118-BLK1)</b>					Prepared: 06/21/2023 Analyzed: 06/22/2023					
SAR	0.00		SAR							U
Calcium PPM	ND	10.0	mg/L							U
Magnesium PPM	ND	10.0	"							U
Sodium PPM	ND	10.0	"							U
<b>Duplicate (B3F2118-DUP1)</b>		<b>Source: Y306475-01</b>			Prepared: 06/21/2023 Analyzed: 06/22/2023					
SAR	0.00		SAR		0.236			200	200	U
Calcium PPM	65.7	10.0	mg/L		66.4			0.924	50	
Magnesium PPM	20.0	10.0	"		20.2			1.29	50	
Sodium PPM	8.53	10.0	"		8.55			0.234	50	U

Origins Laboratory, Inc.



Jen Pellegrini, Project Manager

*The results in this report apply to the samples analyzed in accordance with the chain of custody document. This analytical report must be reproduced in its entirety.*

Eagle Environmental Consulting, LLC  
 8000 W 44th Ave  
 Wheat Ridge CO 80033

Martin C Eckert III  
 Project Number: [none]  
 Project: Noble - State #36-614

**Saturated Paste - Quality Control**  
**Origins Laboratory, Inc.**

Analyte	Result	Reporting Limit	Units	Spike Level	Source Result	%REC	%REC Limits	RPD	RPD Limit	Notes
<b>Batch B3F2123 - Saturated Paste pH/EC</b>										
<b>Blank (B3F2123-BLK1)</b>					Prepared: 06/21/2023 Analyzed: 06/22/2023					
Specific Conductance (EC)	ND	0.00500	mmhos/cm							U
<b>Duplicate (B3F2123-DUP1)</b>					<b>Source: Y306475-01</b> Prepared: 06/21/2023 Analyzed: 06/22/2023					
Specific Conductance (EC)	0.492	0.00500	mmhos/cm		0.496			0.871	25	
pH	8.22		pH Units		8.31			1.09	25	

Origins Laboratory, Inc.



Jen Pellegrini, Project Manager

*The results in this report apply to the samples analyzed in accordance with the chain of custody document. This analytical report must be reproduced in its entirety.*

Eagle Environmental Consulting, LLC  
 8000 W 44th Ave  
 Wheat Ridge CO 80033

Martin C Eckert III  
 Project Number: [none]  
 Project: Noble - State #36-614

**Total Metals by 7196A - Quality Control**  
**Waypoint Analytical, LLC.**

Analyte	Result	Reporting Limit	Units	Spike Level	Source Result	%REC	%REC Limits	RPD	RPD Limit	Notes
<b>Batch L691406 -</b>										
<b>DUP (L 89318-DUP)</b>		<b>Source: Y306487-02</b>			Prepared: Analyzed: 07/07/2023					
Chromium, Hexavalent	ND	0.501	mg/Kg		<0.501		-	0	20	
<b>MS (L 89318-MS)</b>		<b>Source: Y306487-02</b>			Prepared: Analyzed: 07/07/2023					
Chromium, Hexavalent	36.6	2.5	mg/Kg	39.1	<1.22	94	75-125			
<b>LCS (LCS)</b>		Prepared: Analyzed: 07/07/2023								
Chromium, Hexavalent	6.16	0.5	mg/Kg	8		77	75-125			
<b>LRB (LRB)</b>		Prepared: Analyzed: 07/07/2023								
Chromium, Hexavalent	ND	0.5	mg/Kg				-			

Origins Laboratory, Inc.



Jen Pellegrini, Project Manager

*The results in this report apply to the samples analyzed in accordance with the chain of custody document. This analytical report must be reproduced in its entirety.*

Eagle Environmental Consulting, LLC  
 8000 W 44th Ave  
 Wheat Ridge CO 80033

Martin C Eckert III  
 Project Number: [none]  
 Project: Noble - State #36-614

**PAH by 8270D SIM - Quality Control**  
**Waypoint Analytical, LLC.**

Analyte	Result	Reporting Limit	Units	Spike Level	Source Result	%REC	%REC Limits	RPD	RPD Limit	Notes
---------	--------	-----------------	-------	-------------	---------------	------	-------------	-----	-----------	-------

**Batch L689081 - 3550B**

<b>MSD (L 89318-MSD-L689081)</b>		<b>Source: Y306487-02</b>			<b>Prepared: 06/22/2023 Analyzed: 06/22/2023</b>					
Dibenz(a,h)anthracene	0.118	0.00335	mg/Kg	0.166	<0.00307	71	30-130	8.1	30	
Benzo(b)fluoranthene	0.105	0.00335	"	0.166	<0.00293	63.2	30-130	2.8	30	
1-Methylnaphthalene	0.486	0.0101	"	0.166	0.577	0	30-130	50.2	30	*
2-Methylnaphthalene	0.749	0.0101	"	0.166	0.979	0	30-130	50.8	30	*
Acenaphthene	0.157	0.00335	"	0.166	0.0775	47.8	30-130	19	30	
Anthracene	0.0963	0.00335	"	0.166	<0.00167	58	30-130	14.8	30	
Fluorene	0.172	0.00335	"	0.166	0.125	28.3	30-130	35.4	30	*
Benzo(a)pyrene	0.108	0.00335	"	0.166	<0.00234	65	30-130	6.2	30	
Pyrene	0.119	0.00335	"	0.166	0.00822	66.7	30-130	11.5	30	
Benzo(k)fluoranthene	0.105	0.00335	"	0.166	<0.00219	63.2	30-130	19.7	30	
Chrysene	0.119	0.00335	"	0.166	0.0251	56.5	30-130	4.9	30	
Fluoranthene	0.115	0.00335	"	0.166	<0.00197	69.2	30-130	13.9	30	
Indeno(1,2,3-cd)pyrene	0.11	0.00335	"	0.166	<0.00314	66.2	30-130	4.4	30	
Benzo(a)anthracene	0.119	0.00335	"	0.166	<0.00247	71.6	30-130	6.5	30	
Surrogate: 2-Fluorobiphenyl	73.1		"	0.332	241	73.1	33-115			
Surrogate: 4-Terphenyl-d14	73.1		"	0.332	246	73.1	33-122			
Surrogate: Nitrobenzene-d5	58.7		"	0.332	193	58.7	29-110			

<b>MS (L 89318-MS-L689081)</b>		<b>Source: Y306487-02</b>			<b>Prepared: 06/22/2023 Analyzed: 06/22/2023</b>					
2-Methylnaphthalene	1.26	0.0101	mg/Kg	0.163	0.979	172	30-130			*
Benzo(k)fluoranthene	0.0861	0.00335	"	0.163	<0.00219	52.8	30-130			
1-Methylnaphthalene	0.812	0.0101	"	0.163	0.577	144	30-130			*
Anthracene	0.083	0.00335	"	0.163	<0.00167	50.9	30-130			
Benzo(a)anthracene	0.127	0.00335	"	0.163	<0.00247	77.9	30-130			
Acenaphthene	0.19	0.00335	"	0.163	0.0775	69	30-130			
Benzo(b)fluoranthene	0.108	0.00335	"	0.163	<0.00293	66.2	30-130			
Pyrene	0.106	0.00335	"	0.163	0.00822	59.9	30-130			

Origins Laboratory, Inc.



Jen Pellegrini, Project Manager

*The results in this report apply to the samples analyzed in accordance with the chain of custody document. This analytical report must be reproduced in its entirety.*

Eagle Environmental Consulting, LLC  
 8000 W 44th Ave  
 Wheat Ridge CO 80033

Martin C Eckert III  
 Project Number: [none]  
 Project: Noble - State #36-614

**PAH by 8270D SIM - Quality Control**  
**Waypoint Analytical, LLC.**

Analyte	Result	Reporting Limit	Units	Spike Level	Source Result	%REC	%REC Limits	RPD	RPD Limit	Notes
---------	--------	-----------------	-------	-------------	---------------	------	-------------	-----	-----------	-------

**Batch L689081 - 3550B**

<b>MS (L 89318-MS-L689081)</b>		<b>Source: Y306487-02</b>			<b>Prepared: 06/22/2023 Analyzed: 06/22/2023</b>					
Chrysene	0.125	0.00335	mg/Kg	0.163	0.0251	61.2	30-130			
Dibenz(a,h)anthracene	0.128	0.00335	"	0.163	<0.00307	78.5	30-130			
Fluoranthene	0.1	0.00335	"	0.163	<0.00197	61.3	30-130			
Fluorene	0.246	0.00335	"	0.163	0.125	74.2	30-130			
Indeno(1,2,3-cd)pyrene	0.115	0.00335	"	0.163	<0.00314	70.5	30-130			
Benzo(a)pyrene	0.115	0.00335	"	0.163	<0.00234	70.5	30-130			
Surrogate: 2-Fluorobiphenyl	77.6		"	0.326	241	77.6	33-115			
Surrogate: 4-Terphenyl-d14	62.5		"	0.326	246	62.5	33-122			
Surrogate: Nitrobenzene-d5	65.9		"	0.326	193	65.9	29-110			

<b>LCS (LCS-L689081)</b>		<b>Prepared: 06/22/2023 Analyzed: 06/22/2023</b>								
2-Methylnaphthalene	0.099	0.00201	mg/Kg	0.167		59.2	30-130			
Dibenz(a,h)anthracene	0.133	0.00067	"	0.167		79.6	30-130			
Acenaphthene	0.103	0.00067	"	0.167		61.6	30-130			
Benzo(b)fluoranthene	0.0804	0.00067	"	0.167		48.1	30-130			
Benzo(a)pyrene	0.119	0.00067	"	0.167		71.2	30-130			
Benzo(a)anthracene	0.115	0.00067	"	0.167		68.8	30-130			
Anthracene	0.118	0.00067	"	0.167		70.6	30-130			
Chrysene	0.11	0.00067	"	0.167		65.8	30-130			
Fluoranthene	0.107	0.00067	"	0.167		64	30-130			
Fluorene	0.113	0.00067	"	0.167		67.6	30-130			
Indeno(1,2,3-cd)pyrene	0.094	0.00067	"	0.167		56.2	30-130			
Pyrene	0.105	0.00067	"	0.167		62.8	30-130			
1-Methylnaphthalene	0.0981	0.00201	"	0.167		58.7	30-130			
Benzo(k)fluoranthene	0.1	0.00067	"	0.167		59.8	30-130			
Surrogate: 4-Terphenyl-d14	67.8		"	0.333		67.8	33-122			
Surrogate: Nitrobenzene-d5	51.6		"	0.333		51.6	29-110			

Origins Laboratory, Inc.



Jen Pellegrini, Project Manager

The results in this report apply to the samples analyzed in accordance with the chain of custody document. This analytical report must be reproduced in its entirety.

Eagle Environmental Consulting, LLC  
 8000 W 44th Ave  
 Wheat Ridge CO 80033

Martin C Eckert III  
 Project Number: [none]  
 Project: Noble - State #36-614

**PAH by 8270D SIM - Quality Control**  
**Waypoint Analytical, LLC.**

Analyte	Result	Reporting Limit	Units	Spike Level	Source Result	%REC	%REC Limits	RPD	RPD Limit	Notes
<b>Batch L689081 - 3550B</b>										
<b>LCS (LCS-L689081)</b>					Prepared: 06/22/2023 Analyzed: 06/22/2023					
Surrogate: 2-Fluorobiphenyl	63.6		mg/Kg	0.333		63.6	33-115			
<b>LRB (LRB-L689081)</b>					Prepared: 06/22/2023 Analyzed: 06/22/2023					
Benzo(a)pyrene	ND	0.00067	mg/Kg				-			
Fluorene	ND	0.00067	"				-			
Pyrene	ND	0.00067	"				-			
Indeno(1,2,3-cd)pyrene	ND	0.00067	"				-			
Fluoranthene	ND	0.00067	"				-			
Dibenz(a,h)anthracene	ND	0.00067	"				-			
Chrysene	ND	0.00067	"				-			
Benzo(b)fluoranthene	ND	0.00067	"				-			
Benzo(a)anthracene	ND	0.00067	"				-			
Anthracene	ND	0.00067	"				-			
Acenaphthene	ND	0.00067	"				-			
1-Methylnaphthalene	ND	0.00201	"				-			
2-Methylnaphthalene	ND	0.00201	"				-			
Benzo(k)fluoranthene	ND	0.00067	"				-			
Surrogate: Nitrobenzene-d5	58.8		"	0.333		58.8	29-110			
Surrogate: 4-Terphenyl-d14	67.5		"	0.333		67.5	33-122			
Surrogate: 2-Fluorobiphenyl	59.4		"	0.333		59.4	33-115			

Origins Laboratory, Inc.



Jen Pellegrini, Project Manager

The results in this report apply to the samples analyzed in accordance with the chain of custody document. This analytical report must be reproduced in its entirety.

Eagle Environmental Consulting, LLC  
8000 W 44th Ave  
Wheat Ridge CO 80033

Martin C Eckert III  
Project Number: [none]  
Project: Noble - State #36-614

---

**Notes and Definitions**

U Sample is Non-Detect.

QM-07 The spike recovery was outside acceptance limits for the MS and/or MSD. The batch was accepted based on acceptable LCS recovery.

J Estimated Value. Analyte below reported quantitation limit.

\* QC Failure

ND Analyte NOT DETECTED at or above the reporting limit

RPD Relative Percent Difference

All soil results are reported on a wet weight basis.

Calculated results may use J-flag data (instead of reported "ND") as part of calculation to provide a more accurate result.

Origins Laboratory, Inc.



Jen Pellegrini, Project Manager

*The results in this report apply to the samples analyzed in accordance with the chain of custody document. This analytical report must be reproduced in its entirety.*



July 18, 2023

Eagle Environmental Consulting, LLC

Martin C Eckert III

8000 W 44th Ave

Wheat Ridge CO 80033

Project Name - Noble - State #36-614

Project Number - [none]

Attached are your analytical results for Noble - State #36-614 received by Origins Laboratory, Inc. July 10, 2023. This project is associated with Origins project number Y307156-01.

The analytical results in the following report were analyzed under the guidelines of EPA Methods. These methods are identified as follows; "SW" are defined in SW-846, "EPA" are defined in 40CFR part 136 and "SM" are defined in the most current revision of Standard Methods For the Examination of Water and Wastewater.

The analytical results apply specifically to the samples and analyses specified per the attached Chain of Custody. As such, this report shall not be reproduced except in full, without the written approval of Origin's laboratory.

Unless otherwise noted, the analytical results for all soil samples are reported on a wet weight basis. All analytical analyses were performed under NELAP guidelines unless noted by a data qualifier.

Any holding time exceedances, deviations from the method specifications or deviations from Origins Laboratory's Standard Operating Procedures are outlined in the case narrative.

Thank you for selecting Origins for your analytical needs. Please contact us with any questions concerning this report, or if we can help with anything at all.

Origins Laboratory, Inc.  
303.433.1322  
o-squad@oelabinc.com



1725 Elk Place, Denver, CO 80211 | Phone: 303.433.1322 | Fax: 303.265.9645

Eagle Environmental Consulting, LLC  
8000 W 44th Ave  
Wheat Ridge CO 80033

Martin C Eckert III  
Project Number: [none]  
Project: Noble - State #36-614

CROSS REFERENCE REPORT

Sample ID	Laboratory ID	Matrix	Date Sampled	Date Received
Background-01@3'	Y307156-01	Soil	June 19, 2023 12:35	07/10/2023 14:45

Origins Laboratory, Inc.



*The results in this report apply to the samples analyzed in accordance with the chain of custody document. This analytical report must be reproduced in its entirety.*



Eagle Environmental Consulting, LLC  
 8000 W 44th Ave  
 Wheat Ridge CO 80033

Martin C Eckert III  
 Project Number: [none]  
 Project: Noble - State #36-614

Origins Laboratory

F-012207-01-R1  
 Effective Date: 01/09/12

**Sample Receipt Checklist**

Origins Work Order: 4307156 Client: Eagle  
 Client Project ID: State #36-614  
 Checklist Completed by: EHS Shipped Via: HO  
 Date/time completed: 7/10/23 (UPS, FedEx, Hand Delivered, Pick-up, etc.)  
 Airbill #: N/A  
 Matrix(s) Received: (Check all that apply):  Soil/Solid  Water  Other: \_\_\_\_\_  
 Cooler Number/Temperature: 116 °c / \_\_\_\_\_ °c / \_\_\_\_\_ °c (Describe) \_\_\_\_\_ °c  
 Thermometer ID: T004

Requirement Description	Yes	No	N/A	Comments (if any)
If samples require cooling, was the temperature between 0°C to ≤ 6°C <sup>(1)</sup> ?	/			
Is there ice present (document if blue ice is used)	/			
Are custody seals present on cooler? (if so, document in comments if they are signed and dated, broken or intact)		/		
Are custody seals present on each sample container? (if so, document in comments if they are signed and dated, broken or intact)		/		
Were all samples received intact <sup>(1)</sup> ?	/			
Was adequate sample volume provided <sup>(1)</sup> ?	/			
Are short holding time analytes or samples with HTs due within 48 hours present <sup>(1)</sup> ?		/		
Is a chain-of-custody (COC) present and filled out completely <sup>(1)</sup> ?	/			
Does the COC agree with the number and type of sample bottles received <sup>(1)</sup> ?	/			
Do the sample IDs on the bottle labels match the COC <sup>(1)</sup> ?	/			
Is the COC properly relinquished by the client with date and time recorded <sup>(1)</sup> ?	/			
For volatiles in water – Is there headspace (> ¼ inch bubble) present? <b>If yes, contact client and note in narrative.</b>			/	
Are samples preserved that require preservation and was it checked <sup>(1)</sup> ? (note ID of confirmation instrument used in comments) / (preservation is not confirmed for subcontracted analyses in order to insure sample integrity)/(pH <2 for samples preserved with HNO3, HCL, H2SO4) / (pH >10 for samples preserved with NaAsO2+NaOH, ZnAc+NaOH)			/	
Additional Comments (if any):				

<sup>(1)</sup> If NO, then contact the client before proceeding with analysis and note date/time and person contacted as well as the corrective action to in the additional comments (above) and the case narrative.

Reviewed by (Project Manager) [Signature] Date/Time Reviewed 7/12/23

Origins Laboratory, Inc.

[Signature]

The results in this report apply to the samples analyzed in accordance with the chain of custody document. This analytical report must be reproduced in its entirety.

Eagle Environmental Consulting, LLC  
 8000 W 44th Ave  
 Wheat Ridge CO 80033

Martin C Eckert III  
 Project Number: [none]  
 Project: Noble - State #36-614

**Background-01@3'**  
**6/19/2023 12:35:00PM**

Analyte	Result	Reporting Limit	Units	Dilution	Batch	Analyst	Prepared	Analyzed	Notes
---------	--------	-----------------	-------	----------	-------	---------	----------	----------	-------

**Origins Laboratory, Inc.**  
**Y307156-01 (Soil)**

**pH in Soil by 9045D**

pH	7.96		pH Units	1	B3G1117	HJD	07/11/2023	07/12/2023	
----	------	--	----------	---	---------	-----	------------	------------	--

**Table 915 metals by EPA 6020B**

Arsenic	2.31	0.0874	mg/kg	10	B3G1127	CIH	07/11/2023	07/12/2023	
Barium	76.3	8.74	"	"	"	CIH	"	"	
Cadmium	ND	0.0874	"	"	"	CIH	"	"	
Copper	ND	8.74	"	"	"	CIH	"	"	
Lead	ND	8.74	"	"	"	CIH	"	"	
Nickel	ND	8.74	"	"	"	CIH	"	"	
Selenium	ND	0.0874	"	"	"	CIH	"	"	
Silver	ND	0.0874	"	"	"	CIH	"	"	
Zinc	ND	87.4	"	"	"	CIH	"	"	

Origins Laboratory, Inc.



*The results in this report apply to the samples analyzed in accordance with the chain of custody document. This analytical report must be reproduced in its entirety.*

Eagle Environmental Consulting, LLC  
 8000 W 44th Ave  
 Wheat Ridge CO 80033

Martin C Eckert III  
 Project Number: [none]  
 Project: Noble - State #36-614

**Metals by EPA 6000/7000 Series Methods - Quality Control**  
**Origins Laboratory, Inc.**

Analyte	Result	Reporting Limit	Units	Spike Level	Source Result	%REC	%REC Limits	RPD	RPD Limit	Notes
---------	--------	-----------------	-------	-------------	---------------	------	-------------	-----	-----------	-------

**Batch B3G1127 - EPA 3050B**

**Blank (B3G1127-BLK1)**

Prepared: 07/11/2023 Analyzed: 07/12/2023

Arsenic	ND	0.000100	mg/kg
Barium	ND	0.0100	"
Cadmium	ND	0.000100	"
Copper	ND	0.0100	"
Lead	ND	0.0100	"
Nickel	ND	0.0100	"
Selenium	ND	0.000100	"
Silver	ND	0.000100	"
Zinc	ND	0.100	"

**LCS (B3G1127-BS1)**

Prepared: 07/11/2023 Analyzed: 07/12/2023

Arsenic	0.0500	0.000100	mg/kg	0.0500	100	80-120
Barium	5.14	0.0100	"	5.00	103	80-120
Cadmium	0.0510	0.000100	"	0.0500	102	80-120
Copper	0.520	0.0100	"	0.500	104	80-120
Lead	0.0496	0.0100	"	0.0500	99.1	80-120
Nickel	0.0515	0.0100	"	0.0500	103	80-120
Selenium	0.0477	0.000100	"	0.0500	95.4	80-120
Silver	0.0514	0.000100	"	0.0500	103	80-120
Zinc	0.515	0.100	"	0.500	103	80-120

**Matrix Spike (B3G1127-MS1)**

**Source: Y307145-01**

Prepared: 07/11/2023 Analyzed: 07/12/2023

Arsenic	5.80	0.0906	mg/kg	4.53	3.02	61.3	75-125	QM-07
Barium	531	9.06	"	453	45.6	107	75-125	
Cadmium	4.91	0.0906	"	4.53	0.139	105	75-125	
Copper	51.3	9.06	"	45.3	5.72	101	75-125	
Lead	19.6	9.06	"	4.53	15.4	92.0	75-125	

Origins Laboratory, Inc.



*The results in this report apply to the samples analyzed in accordance with the chain of custody document. This analytical report must be reproduced in its entirety.*

Eagle Environmental Consulting, LLC  
 8000 W 44th Ave  
 Wheat Ridge CO 80033

Martin C Eckert III  
 Project Number: [none]  
 Project: Noble - State #36-614

**Metals by EPA 6000/7000 Series Methods - Quality Control**  
**Origins Laboratory, Inc.**

Analyte	Result	Reporting Limit	Units	Spike Level	Source Result	%REC	%REC Limits	RPD	RPD Limit	Notes
<b>Batch B3G1127 - EPA 3050B</b>										
<b>Matrix Spike (B3G1127-MS1)</b>			<b>Source: Y307145-01</b>			Prepared: 07/11/2023 Analyzed: 07/12/2023				
Nickel	7.71	9.06	mg/kg	4.53	4.18	77.9	75-125			
Selenium	4.51	0.0906	"	4.53	0.146	96.4	75-125			
Silver	5.00	0.0906	"	4.53	0.0150	110	75-125			
Zinc	87.2	90.6	"	45.3	18.4	152	75-125			QM-07
<b>Matrix Spike Dup (B3G1127-MSD1)</b>			<b>Source: Y307145-01</b>			Prepared: 07/11/2023 Analyzed: 07/12/2023				
Arsenic	6.57	0.0943	mg/kg	4.72	3.02	75.2	75-125	12.4	20	
Barium	579	9.43	"	472	45.6	113	75-125	8.52	20	
Cadmium	5.41	0.0943	"	4.72	0.139	112	75-125	9.70	20	
Copper	57.2	9.43	"	47.2	5.72	109	75-125	11.0	20	
Lead	16.4	9.43	"	4.72	15.4	20.9	75-125	17.7	20	QM-07
Nickel	8.59	9.43	"	4.72	4.18	93.5	75-125	10.8	20	
Selenium	4.67	0.0943	"	4.72	0.146	96.0	75-125	3.49	20	
Silver	5.52	0.0943	"	4.72	0.0150	117	75-125	9.81	20	
Zinc	91.9	94.3	"	47.2	18.4	156	75-125	5.28	20	QM-07

Origins Laboratory, Inc.



*The results in this report apply to the samples analyzed in accordance with the chain of custody document. This analytical report must be reproduced in its entirety.*

Eagle Environmental Consulting, LLC  
 8000 W 44th Ave  
 Wheat Ridge CO 80033

Martin C Eckert III  
 Project Number: [none]  
 Project: Noble - State #36-614

**Saturated Paste - Quality Control**  
**Origins Laboratory, Inc.**

Analyte	Result	Reporting Limit	Units	Spike Level	Source Result	%REC	%REC Limits	RPD	RPD Limit	Notes
---------	--------	-----------------	-------	-------------	---------------	------	-------------	-----	-----------	-------

**Batch B3G1117 - Saturated Paste pH/EC**

**Duplicate (B3G1117-DUP1)**

**Source: Y307149-01**

Prepared: 07/11/2023 Analyzed: 07/12/2023

pH	8.14		pH Units		8.13			0.123	25	
----	------	--	----------	--	------	--	--	-------	----	--

Origins Laboratory, Inc.



*The results in this report apply to the samples analyzed in accordance with the chain of custody document. This analytical report must be reproduced in its entirety.*

Eagle Environmental Consulting, LLC  
8000 W 44th Ave  
Wheat Ridge CO 80033

Martin C Eckert III  
Project Number: [none]  
Project: Noble - State #36-614

---

### Notes and Definitions

QM-07 The spike recovery was outside acceptance limits for the MS and/or MSD. The batch was accepted based on acceptable LCS recovery.

ND Analyte NOT DETECTED at or above the reporting limit

RPD Relative Percent Difference

All soil results are reported at a wet weight basis.

Origins Laboratory, Inc.



*The results in this report apply to the samples analyzed in accordance with the chain of custody document. This analytical report must be reproduced in its entirety.*



July 31, 2023

Eagle Environmental Consulting, LLC

Martin C Eckert III

8000 W 44th Ave

Wheat Ridge CO 80033

Project Name - Noble - State #36-614

Project Number - [none]

Attached are your analytical results for Noble - State #36-614 received by Origins Laboratory, Inc. July 24, 2023. This project is associated with Origins project number Y307515-01.

The analytical results in the following report were analyzed under the guidelines of EPA Methods. These methods are identified as follows; "SW" are defined in SW-846, "EPA" are defined in 40CFR part 136 and "SM" are defined in the most current revision of Standard Methods For the Examination of Water and Wastewater.

The analytical results apply specifically to the samples and analyses specified per the attached Chain of Custody. As such, this report shall not be reproduced except in full, without the written approval of Origin's laboratory.

Unless otherwise noted, the analytical results for all soil samples are reported on a wet weight basis. All analytical analyses were performed under NELAP guidelines unless noted by a data qualifier.

Any holding time exceedances, deviations from the method specifications or deviations from Origins Laboratory's Standard Operating Procedures are outlined in the case narrative.

Thank you for selecting Origins for your analytical needs. Please contact us with any questions concerning this report, or if we can help with anything at all.

Origins Laboratory, Inc.  
303.433.1322  
o-squad@oelabinc.com



Eagle Environmental Consulting, LLC  
8000 W 44th Ave  
Wheat Ridge CO 80033

Martin C Eckert III  
Project Number: [none]  
Project: Noble - State #36-614

CROSS REFERENCE REPORT

Sample ID	Laboratory ID	Matrix	Date Sampled	Date Received
FL-SS-01@3'	Y307515-01	Soil	July 24, 2023 12:35	07/24/2023 15:57

Origins Laboratory, Inc.



*The results in this report apply to the samples analyzed in accordance with the chain of custody document. This analytical report must be reproduced in its entirety.*



Eagle Environmental Consulting, LLC  
 8000 W 44th Ave  
 Wheat Ridge CO 80033

Martin C Eckert III  
 Project Number: [none]  
 Project: Noble - State #36-614

Origins Laboratory

F-012207-01-R1  
 Effective Date: 01/09/12

**Sample Receipt Checklist**

Origins Work Order: 4307515

Client: Eagle

Client Project ID: State #36614

Checklist Completed by: EHS

Shipped Via: HIO

Date/time completed: 7/24/23

(UPS, FedEx, Hand Delivered, Pick-up, etc.)

Airbill #: N/A

Matrix(s) Received: (Check all that apply):  Soil/Solid  Water  Other: \_\_\_\_\_

Cooler Number/Temperature: 1 15.5 °C / \_\_\_\_\_ °C / \_\_\_\_\_ °C (Describe) \_\_\_\_\_ °C

Thermometer ID: 1004

Requirement Description	Yes	No	N/A	Comments (if any)
If samples require cooling, was the temperature between 0°C to ≤ 6°C <sup>(1)</sup> ?	<input checked="" type="checkbox"/>			
Is there ice present (document if blue ice is used)	<input checked="" type="checkbox"/>			
Are custody seals present on cooler? (if so, document in comments if they are signed and dated, broken or intact)		<input checked="" type="checkbox"/>		
Are custody seals present on each sample container? (if so, document in comments if they are signed and dated, broken or intact)		<input checked="" type="checkbox"/>		
Were all samples received intact <sup>(1)</sup> ?	<input checked="" type="checkbox"/>			
Was adequate sample volume provided <sup>(1)</sup> ?	<input checked="" type="checkbox"/>			
Are short holding time analytes or samples with HTs due within 48 hours present <sup>(1)</sup> ?		<input checked="" type="checkbox"/>		
Is a chain-of-custody (COC) present and filled out completely <sup>(1)</sup> ?	<input checked="" type="checkbox"/>			
Does the COC agree with the number and type of sample bottles received <sup>(1)</sup> ?	<input checked="" type="checkbox"/>			
Do the sample IDs on the bottle labels match the COC <sup>(1)</sup> ?	<input checked="" type="checkbox"/>			
Is the COC properly relinquished by the client with date and time recorded <sup>(1)</sup> ?	<input checked="" type="checkbox"/>			
For volatiles in water – is there headspace (> ¼ inch bubble) present? <b>If yes, contact client and note in narrative.</b>			<input checked="" type="checkbox"/>	
Are samples preserved that require preservation and was it checked <sup>(1)</sup> ? (note ID of confirmation instrument used in comments) / (preservation is not confirmed for subcontracted analyses in order to insure sample integrity)/(pH <2 for samples preserved with HNO <sub>3</sub> , HCL, H <sub>2</sub> SO <sub>4</sub> ) / (pH >10 for samples preserved with NaAsO <sub>2</sub> +NaOH, ZnAc+NaOH)			<input checked="" type="checkbox"/>	
Additional Comments (if any):				

<sup>(1)</sup>If NO, then contact the client before proceeding with analysis and note date/time and person contacted as well as the corrective action to in the additional comments (above) and the case narrative.

Reviewed by (Project Manager) [Signature] Date/Time Reviewed 7/26/23

Origins Laboratory, Inc.

[Signature]

The results in this report apply to the samples analyzed in accordance with the chain of custody document. This analytical report must be reproduced in its entirety.

Eagle Environmental Consulting, LLC  
 8000 W 44th Ave  
 Wheat Ridge CO 80033

Martin C Eckert III  
 Project Number: [none]  
 Project: Noble - State #36-614

**FL-SS-01@3'**

**7/24/2023 12:35:00PM**

Analyte	Result	Min Detection Limit	Reporting Limit	Units	Dilution	Batch	Prepared	Analyzed	Notes
---------	--------	---------------------	-----------------	-------	----------	-------	----------	----------	-------

**Origins Laboratory, Inc.**  
**Y307515-01 (Soil)**

**Boron (DTPA Sorbitol)**

Boron	ND		0.0998	mg/L	1	B3G2506	07/25/2023	07/26/2023	
-------	----	--	--------	------	---	---------	------------	------------	--

**DRO/ORO by EPA 8015D**

Diesel (C10-C28)	ND		25.0	mg/kg	1	B3G2520	07/25/2023	07/27/2023	U
Residual Range Organics (C28-C40)	ND		100	"	"	"	"	"	U

Surrogate: o-Terphenyl	117 %		50-150			"	"	"	
------------------------	-------	--	--------	--	--	---	---	---	--

**GBTEX+TMBs by 8260D**

1,2,4-Trimethylbenzene	ND		0.00200	mg/kg	1	B3G2517	07/25/2023	07/29/2023	U
1,3,5-Trimethylbenzene	ND		0.00200	"	"	"	"	"	U
Benzene	ND		0.00200	"	"	"	"	"	U
Ethylbenzene	ND		0.00200	"	"	"	"	"	U
Naphthalene	ND		0.00380	"	"	"	"	"	U
Toluene	ND		0.00200	"	"	"	"	"	U
Xylenes, total	ND		0.00200	"	"	"	"	"	U
Gasoline Range Hydrocarbons	ND		0.200	"	"	"	"	"	U

Origins Laboratory, Inc.



*The results in this report apply to the samples analyzed in accordance with the chain of custody document. This analytical report must be reproduced in its entirety.*

Eagle Environmental Consulting, LLC  
 8000 W 44th Ave  
 Wheat Ridge CO 80033

Martin C Eckert III  
 Project Number: [none]  
 Project: Noble - State #36-614

**FL-SS-01@3'**

**7/24/2023 12:35:00PM**

Analyte	Result	Min Detection Limit	Reporting Limit	Units	Dilution	Batch	Prepared	Analyzed	Notes
---------	--------	---------------------	-----------------	-------	----------	-------	----------	----------	-------

**Origins Laboratory, Inc.**  
**Y307515-01 (Soil)**

**GBTEX+TMBs by 8260D**

Surrogate: 1,2-Dichloroethane-d4	109 %		70-130			B3G25 17	07/25/2023	07/29/2023	
Surrogate: Toluene-d8	104 %		70-130			"	"	"	
Surrogate: 4-Bromofluorobenzene	101 %		70-130			"	"	"	

**Metals by Saturated Paste by EPA 6010**

Calcium	2.45		0.499	meq/L	10	[CALC]	07/25/2023	07/26/2023	
Magnesium	ND		0.823	"	"	"	"	"	
Sodium	ND		0.435	"	"	"	"	"	

**PAH by 8270D SIM**

1-Methylnaphthalene	ND	0.00109	0.00201	mg/Kg	1	L695170	07/27/2023	07/27/2023	
2-Methylnaphthalene	ND	0.00194	0.00201	"	"	"	"	"	
Acenaphthene	ND	0.000304	0.00067	"	"	"	"	"	
Anthracene	ND	0.000334	0.00067	"	"	"	"	"	
Benzo(a)anthracene	ND	0.000493	0.00067	"	"	"	"	"	
Benzo(a)pyrene	ND	0.000468	0.00067	"	"	"	"	"	
Benzo(b)fluoranthene	ND	0.000585	0.00067	"	"	"	"	"	
Benzo(k)fluoranthene	ND	0.000437	0.00067	"	"	"	"	"	
Chrysene	ND	0.000624	0.00067	"	"	"	"	"	
Dibenz(a,h)anthracene	ND	0.000614	0.00067	"	"	"	"	"	

Origins Laboratory, Inc.



The results in this report apply to the samples analyzed in accordance with the chain of custody document. This analytical report must be reproduced in its entirety.

Eagle Environmental Consulting, LLC  
 8000 W 44th Ave  
 Wheat Ridge CO 80033

Martin C Eckert III  
 Project Number: [none]  
 Project: Noble - State #36-614

**FL-SS-01@3'**

**7/24/2023 12:35:00PM**

Analyte	Result	Min Detection Limit	Reporting Limit	Units	Dilution	Batch	Prepared	Analyzed	Notes
---------	--------	---------------------	-----------------	-------	----------	-------	----------	----------	-------

**Waypoint Analytical, LLC.**  
**Y307515-01 (Soil)**

**PAH by 8270D SIM**

Fluoranthene	ND	0.000394	0.00067	mg/Kg	1	L695170	07/27/2023	07/27/2023	
Fluorene	ND	0.000286	0.00067	"	"	"	"	"	
Indeno(1,2,3-cd)pyrene	ND	0.000627	0.00067	"	"	"	"	"	
Pyrene	ND	0.000643	0.00067	"	"	"	"	"	

Surrogate: 2-Fluorobiphenyl	60.2 %		33-115			"	"	"	
Surrogate: 4-Terphenyl-d14	78 %		33-122			"	"	"	
Surrogate: Nitrobenzene-d5	57.2 %		29-110			"	"	"	

**pH in Soil by 9045D**

pH	8.04			pH Units	1	B3G2510	07/25/2023	07/26/2023	
----	------	--	--	----------	---	---------	------------	------------	--

**SAR by 20B Saturated Paste**

SAR	0.169			SAR	1	B3G2503	07/25/2023	07/26/2023	
-----	-------	--	--	-----	---	---------	------------	------------	--

**Specific Conductance Mod. 9050A**

Specific Conductance (EC)	0.316		0.00500	mmhos/cm	1	B3G2510	07/25/2023	07/26/2023	
---------------------------	-------	--	---------	----------	---	---------	------------	------------	--

**Table 915 metals by EPA 6020B**

Arsenic	2.56		0.0968	mg/kg	10	B3G2514	07/25/2023	07/25/2023	
---------	------	--	--------	-------	----	---------	------------	------------	--

Origins Laboratory, Inc.



The results in this report apply to the samples analyzed in accordance with the chain of custody document. This analytical report must be reproduced in its entirety.

Eagle Environmental Consulting, LLC  
 8000 W 44th Ave  
 Wheat Ridge CO 80033

Martin C Eckert III  
 Project Number: [none]  
 Project: Noble - State #36-614

FL-SS-01@3'

7/24/2023 12:35:00PM

Analyte	Result	Min Detection Limit	Reporting Limit	Units	Dilution	Batch	Prepared	Analyzed	Notes
---------	--------	---------------------	-----------------	-------	----------	-------	----------	----------	-------

**Origins Laboratory, Inc.**  
 Y307515-01 (Soil)

**Table 915 metals by EPA 6020B**

Barium	51.6		9.68	mg/kg	10	B3G2514	07/25/2023	07/25/2023	
Cadmium	ND		0.0968	"	"	"	"	"	
Copper	ND		9.68	"	"	"	"	"	
Lead	ND		9.68	"	"	"	"	"	
Nickel	ND		9.68	"	"	"	"	"	
Selenium	ND		0.0968	"	"	"	"	"	
Silver	ND		0.0968	"	"	"	"	"	
Zinc	ND		96.8	"	"	"	"	"	

**Total Metals by 7196A**

Chromium, Hexavalent	ND	0.244	0.5	mg/Kg	1	L695476	07/24/2023	07/28/2023	
----------------------	----	-------	-----	-------	---	---------	------------	------------	--

Origins Laboratory, Inc.



*The results in this report apply to the samples analyzed in accordance with the chain of custody document. This analytical report must be reproduced in its entirety.*

Eagle Environmental Consulting, LLC  
 8000 W 44th Ave  
 Wheat Ridge CO 80033

Martin C Eckert III  
 Project Number: [none]  
 Project: Noble - State #36-614

**Volatile Organic Compounds by GC/MS SW846 8260D - Quality Control**  
**Origins Laboratory, Inc.**

Analyte	Result	Reporting Limit	Units	Spike Level	Source Result	%REC	%REC Limits	RPD	RPD Limit	Notes
---------	--------	-----------------	-------	-------------	---------------	------	-------------	-----	-----------	-------

**Batch B3G2517 - EPA 5030 (soil)**

**Blank (B3G2517-BLK1)**

Prepared: 07/25/2023 Analyzed: 07/27/2023

1,2,4-Trimethylbenzene	ND	0.00200	mg/kg							U
1,3,5-Trimethylbenzene	ND	0.00200	"							U
Benzene	ND	0.00200	"							U
Ethylbenzene	ND	0.00200	"							U
Naphthalene	ND	0.00380	"							U
Toluene	ND	0.00200	"							U
Xylenes, total	ND	0.00200	"							U
Gasoline Range Hydrocarbons	ND	0.200	"							U
Surrogate: 1,2-Dichloroethane-d4	0.12		"	0.125	99.9		70-130			
Surrogate: Toluene-d8	0.13		"	0.125	100		70-130			
Surrogate: 4-Bromofluorobenzene	0.13		"	0.125	100		70-130			

Origins Laboratory, Inc.



*The results in this report apply to the samples analyzed in accordance with the chain of custody document. This analytical report must be reproduced in its entirety.*

Eagle Environmental Consulting, LLC  
 8000 W 44th Ave  
 Wheat Ridge CO 80033

Martin C Eckert III  
 Project Number: [none]  
 Project: Noble - State #36-614

**Volatile Organic Compounds by GC/MS SW846 8260D - Quality Control**  
**Origins Laboratory, Inc.**

Analyte	Result	Reporting Limit	Units	Spike Level	Source Result	%REC	%REC Limits	RPD	RPD Limit	Notes
---------	--------	-----------------	-------	-------------	---------------	------	-------------	-----	-----------	-------

**Batch B3G2517 - EPA 5030 (soil)**

**LCS (B3G2517-BS1)**

Prepared: 07/25/2023 Analyzed: 07/27/2023

1,2,4-Trimethylbenzene	0.0939	0.00200	mg/kg	0.100		93.9	70-130			
1,3,5-Trimethylbenzene	0.0943	0.00200	"	0.100		94.3	70-130			
Benzene	0.0834	0.00200	"	0.100		83.4	70-130			
Ethylbenzene	0.0889	0.00200	"	0.100		88.9	70-130			
Naphthalene	0.0859	0.00380	"	0.100		85.9	70-130			
Toluene	0.0822	0.00200	"	0.100		82.2	70-130			
o-Xylene	0.0822	0.00200	"	0.100		82.2	70-130			
m,p-Xylene	0.189	0.00400	"	0.200		94.3	70-130			
Surrogate: 1,2-Dichloroethane-d4	0.12		"	0.125		95.7	70-130			
Surrogate: Toluene-d8	0.12		"	0.125		99.6	70-130			
Surrogate: 4-Bromofluorobenzene	0.13		"	0.125		102	70-130			

Origins Laboratory, Inc.



*The results in this report apply to the samples analyzed in accordance with the chain of custody document. This analytical report must be reproduced in its entirety.*

Eagle Environmental Consulting, LLC  
 8000 W 44th Ave  
 Wheat Ridge CO 80033

Martin C Eckert III  
 Project Number: [none]  
 Project: Noble - State #36-614

**Volatile Organic Compounds by GC/MS SW846 8260D - Quality Control**  
**Origins Laboratory, Inc.**

Analyte	Result	Reporting Limit	Units	Spike Level	Source Result	%REC	%REC Limits	RPD	RPD Limit	Notes
---------	--------	-----------------	-------	-------------	---------------	------	-------------	-----	-----------	-------

Batch B3G2517 - EPA 5030 (soil)

Matrix Spike (B3G2517-MS1)	Source: Y307485-01			Prepared: 07/25/2023 Analyzed: 07/27/2023						
1,2,4-Trimethylbenzene	0.0866	0.00200	mg/kg	0.100	ND	86.6	70-130			
1,3,5-Trimethylbenzene	0.0877	0.00200	"	0.100	ND	87.7	70-130			
Benzene	0.0759	0.00200	"	0.100	ND	75.9	70-130			
Ethylbenzene	0.0833	0.00200	"	0.100	ND	83.3	70-130			
Naphthalene	0.0797	0.00380	"	0.100	ND	79.7	70-130			
Toluene	0.0749	0.00200	"	0.100	ND	74.9	70-130			
o-Xylene	0.0779	0.00200	"	0.100	ND	77.9	70-130			
m,p-Xylene	0.176	0.00400	"	0.200	ND	88.0	70-130			
Surrogate: 1,2-Dichloroethane-d4	0.12		"	0.125		98.9	70-130			
Surrogate: Toluene-d8	0.12		"	0.125		99.6	70-130			
Surrogate: 4-Bromofluorobenzene	0.13		"	0.125		104	70-130			

Origins Laboratory, Inc.



The results in this report apply to the samples analyzed in accordance with the chain of custody document. This analytical report must be reproduced in its entirety.

Eagle Environmental Consulting, LLC  
 8000 W 44th Ave  
 Wheat Ridge CO 80033

Martin C Eckert III  
 Project Number: [none]  
 Project: Noble - State #36-614

**Volatile Organic Compounds by GC/MS SW846 8260D - Quality Control**  
**Origins Laboratory, Inc.**

Analyte	Result	Reporting Limit	Units	Spike Level	Source Result	%REC	%REC Limits	RPD	RPD Limit	Notes
---------	--------	-----------------	-------	-------------	---------------	------	-------------	-----	-----------	-------

Batch B3G2517 - EPA 5030 (soil)

Matrix Spike Dup (B3G2517-MSD1)	Source: Y307485-01		Prepared: 07/25/2023 Analyzed: 07/27/2023							
1,2,4-Trimethylbenzene	0.0813	0.00200	mg/kg	0.100	ND	81.3	70-130	6.36	20	
1,3,5-Trimethylbenzene	0.0830	0.00200	"	0.100	ND	83.0	70-130	5.41	20	
Benzene	0.0728	0.00200	"	0.100	ND	72.8	70-130	4.20	20	
Ethylbenzene	0.0789	0.00200	"	0.100	ND	78.9	70-130	5.43	20	
Naphthalene	0.0809	0.00380	"	0.100	ND	80.9	70-130	1.49	20	
Toluene	0.0734	0.00200	"	0.100	ND	73.4	70-130	1.92	20	
o-Xylene	0.0745	0.00200	"	0.100	ND	74.5	70-130	4.36	20	
m,p-Xylene	0.166	0.00400	"	0.200	ND	83.0	70-130	5.92	20	
Surrogate: 1,2-Dichloroethane-d4	0.13		"	0.125		101	70-130			
Surrogate: Toluene-d8	0.13		"	0.125		102	70-130			
Surrogate: 4-Bromofluorobenzene	0.13		"	0.125		102	70-130			

Origins Laboratory, Inc.



*The results in this report apply to the samples analyzed in accordance with the chain of custody document. This analytical report must be reproduced in its entirety.*

Eagle Environmental Consulting, LLC  
 8000 W 44th Ave  
 Wheat Ridge CO 80033

Martin C Eckert III  
 Project Number: [none]  
 Project: Noble - State #36-614

**Volatile Organic Compounds by GC/MS SW846 8260D - Quality Control**  
**Origins Laboratory, Inc.**

Analyte	Result	Reporting Limit	Units	Spike Level	Source Result	%REC	%REC Limits	RPD	RPD Limit	Notes
<b>Batch B3G2520 - EPA 3550B</b>										
<b>Blank (B3G2520-BLK1)</b>										
					Prepared: 07/25/2023 Analyzed: 07/27/2023					
Diesel (C10-C28)	ND	25.0	mg/kg							U
Residual Range Organics (C28-C40)	ND	100	"							U
Surrogate: o-Terphenyl	30		"	24.9		119	50-150			

Origins Laboratory, Inc.



*The results in this report apply to the samples analyzed in accordance with the chain of custody document. This analytical report must be reproduced in its entirety.*

Eagle Environmental Consulting, LLC  
 8000 W 44th Ave  
 Wheat Ridge CO 80033

Martin C Eckert III  
 Project Number: [none]  
 Project: Noble - State #36-614

**Extractable Petroleum Hydrocarbons by 8015D - Quality Control**  
**Origins Laboratory, Inc.**

Analyte	Result	Reporting Limit	Units	Spike Level	Source Result	%REC	%REC Limits	RPD	RPD Limit	Notes
---------	--------	-----------------	-------	-------------	---------------	------	-------------	-----	-----------	-------

**Batch B3G2520 - EPA 3550B**

**LCS (B3G2520-BS1)**

Prepared: 07/25/2023 Analyzed: 07/27/2023

Diesel (C10-C28)	819	50.0	mg/kg	1000		81.9	70-130			
Residual Range Organics (C28-C40)	967	200	"	1000		96.7	70-130			
Surrogate: o-Terphenyl	66		"	49.8		133	50-150			

Origins Laboratory, Inc.



*The results in this report apply to the samples analyzed in accordance with the chain of custody document. This analytical report must be reproduced in its entirety.*

Eagle Environmental Consulting, LLC  
 8000 W 44th Ave  
 Wheat Ridge CO 80033

Martin C Eckert III  
 Project Number: [none]  
 Project: Noble - State #36-614

**Extractable Petroleum Hydrocarbons by 8015D - Quality Control**  
**Origins Laboratory, Inc.**

Analyte	Result	Reporting Limit	Units	Spike Level	Source Result	%REC	%REC Limits	RPD	RPD Limit	Notes
---------	--------	-----------------	-------	-------------	---------------	------	-------------	-----	-----------	-------

**Batch B3G2520 - EPA 3550B**

<b>Matrix Spike (B3G2520-MS1)</b>	<b>Source: Y307494-01</b>			<b>Prepared: 07/25/2023 Analyzed: 07/27/2023</b>						
Diesel (C10-C28)	825	50.0	mg/kg	1000	ND	82.5	70-130			
Residual Range Organics (C28-C40)	974	200	"	1000	ND	97.4	70-130			
Surrogate: o-Terphenyl	58		"	49.8		117	50-150			

Origins Laboratory, Inc.



*The results in this report apply to the samples analyzed in accordance with the chain of custody document. This analytical report must be reproduced in its entirety.*

Eagle Environmental Consulting, LLC  
 8000 W 44th Ave  
 Wheat Ridge CO 80033

Martin C Eckert III  
 Project Number: [none]  
 Project: Noble - State #36-614

**Extractable Petroleum Hydrocarbons by 8015D - Quality Control**  
**Origins Laboratory, Inc.**

Analyte	Result	Reporting Limit	Units	Spike Level	Source Result	%REC	%REC Limits	RPD	RPD Limit	Notes
---------	--------	-----------------	-------	-------------	---------------	------	-------------	-----	-----------	-------

**Batch B3G2520 - EPA 3550B**

<b>Matrix Spike Dup (B3G2520-MSD1)</b>	<b>Source: Y307494-01</b>			<b>Prepared: 07/25/2023 Analyzed: 07/27/2023</b>						
Diesel (C10-C28)	869	50.0	mg/kg	1000	ND	86.9	70-130	5.23	35	
Residual Range Organics (C28-C40)	1020	200	"	1000	ND	102	70-130	4.17	35	
Surrogate: o-Terphenyl	60		"	49.8		120	50-150			

Origins Laboratory, Inc.



*The results in this report apply to the samples analyzed in accordance with the chain of custody document. This analytical report must be reproduced in its entirety.*

Eagle Environmental Consulting, LLC  
 8000 W 44th Ave  
 Wheat Ridge CO 80033

Martin C Eckert III  
 Project Number: [none]  
 Project: Noble - State #36-614

**Extractable Petroleum Hydrocarbons by 8015D - Quality Control**  
**Origins Laboratory, Inc.**

Analyte	Result	Reporting Limit	Units	Spike Level	Source Result	%REC	%REC Limits	RPD	RPD Limit	Notes
---------	--------	-----------------	-------	-------------	---------------	------	-------------	-----	-----------	-------

**Metals by EPA 6000/7000 Series Methods - Quality Control**  
**Origins Laboratory, Inc.**

Analyte	Result	Reporting Limit	Units	Spike Level	Source Result	%REC	%REC Limits	RPD	RPD Limit	Notes
---------	--------	-----------------	-------	-------------	---------------	------	-------------	-----	-----------	-------

**Batch B3G2514 - EPA 3050B**

**Blank (B3G2514-BLK1)**

Prepared: 07/25/2023 Analyzed: 07/25/2023

Arsenic	ND	0.000100	mg/kg							
Barium	ND	0.0100	"							
Cadmium	ND	0.000100	"							
Copper	ND	0.0100	"							
Lead	ND	0.0100	"							
Nickel	ND	0.0100	"							
Selenium	ND	0.000100	"							
Silver	ND	0.000100	"							
Zinc	ND	0.100	"							

**LCS (B3G2514-BS1)**

Prepared: 07/25/2023 Analyzed: 07/25/2023

Arsenic	0.0507	0.000100	mg/kg	0.0500		101	80-120			
Barium	5.41	0.0100	"	5.00		108	80-120			
Cadmium	0.0539	0.000100	"	0.0500		108	80-120			
Copper	0.556	0.0100	"	0.500		111	80-120			
Lead	0.0540	0.0100	"	0.0500		108	80-120			
Nickel	0.0517	0.0100	"	0.0500		103	80-120			
Selenium	0.0502	0.000100	"	0.0500		100	80-120			
Silver	0.0530	0.000100	"	0.0500		106	80-120			
Zinc	0.508	0.100	"	0.500		102	80-120			

**Matrix Spike (B3G2514-MS1)**

Source: Y307513-01

Prepared: 07/25/2023 Analyzed: 07/25/2023

Origins Laboratory, Inc.



*The results in this report apply to the samples analyzed in accordance with the chain of custody document. This analytical report must be reproduced in its entirety.*

Eagle Environmental Consulting, LLC  
 8000 W 44th Ave  
 Wheat Ridge CO 80033

Martin C Eckert III  
 Project Number: [none]  
 Project: Noble - State #36-614

**Metals by EPA 6000/7000 Series Methods - Quality Control**  
**Origins Laboratory, Inc.**

Analyte	Result	Reporting Limit	Units	Spike Level	Source Result	%REC	%REC Limits	RPD	RPD Limit	Notes
---------	--------	-----------------	-------	-------------	---------------	------	-------------	-----	-----------	-------

**Batch B3G2514 - EPA 3050B**

<b>Matrix Spike (B3G2514-MS1)</b>		<b>Source: Y307513-01</b>			Prepared: 07/25/2023 Analyzed: 07/25/2023					
Arsenic	5.95	0.0890	mg/kg	4.45	1.44	101	75-125			
Barium	495	8.90	"	445	27.9	105	75-125			
Cadmium	4.76	0.0890	"	4.45	0.0785	105	75-125			
Copper	52.5	8.90	"	44.5	3.35	110	75-125			
Lead	17.3	8.90	"	4.45	6.52	243	75-125			QM-07
Nickel	8.94	8.90	"	4.45	3.38	125	75-125			
Selenium	4.34	0.0890	"	4.45	0.0426	96.5	75-125			
Silver	4.55	0.0890	"	4.45	0.0145	102	75-125			
Zinc	69.2	89.0	"	44.5	13.8	124	75-125			

<b>Matrix Spike Dup (B3G2514-MSD1)</b>		<b>Source: Y307513-01</b>			Prepared: 07/25/2023 Analyzed: 07/25/2023					
Arsenic	6.26	0.0954	mg/kg	4.77	1.44	101	75-125	5.15	20	
Barium	521	9.54	"	477	27.9	103	75-125	5.12	20	
Cadmium	5.02	0.0954	"	4.77	0.0785	104	75-125	5.27	20	
Copper	57.2	9.54	"	47.7	3.35	113	75-125	8.67	20	
Lead	12.9	9.54	"	4.77	6.52	135	75-125	29.0	20	QM-07
Nickel	11.3	9.54	"	4.77	3.38	166	75-125	23.3	20	QM-07
Selenium	4.65	0.0954	"	4.77	0.0426	96.6	75-125	6.93	20	
Silver	4.85	0.0954	"	4.77	0.0145	101	75-125	6.52	20	
Zinc	62.8	95.4	"	47.7	13.8	103	75-125	9.64	20	

Origins Laboratory, Inc.



*The results in this report apply to the samples analyzed in accordance with the chain of custody document. This analytical report must be reproduced in its entirety.*

Eagle Environmental Consulting, LLC  
 8000 W 44th Ave  
 Wheat Ridge CO 80033

Martin C Eckert III  
 Project Number: [none]  
 Project: Noble - State #36-614

**Classical Chemistry Parameters - Quality Control**  
**Origins Laboratory, Inc.**

Analyte	Result	Reporting Limit	Units	Spike Level	Source Result	%REC	%REC Limits	RPD	RPD Limit	Notes
---------	--------	-----------------	-------	-------------	---------------	------	-------------	-----	-----------	-------

**Batch B3G2503 - Saturated Paste Metals**

**Blank (B3G2503-BLK1)**

Prepared: 07/25/2023 Analyzed: 07/26/2023

Calcium PPM	ND	10.0	mg/L							
SAR	0.00		SAR							
Magnesium PPM	ND	10.0	mg/L							
Sodium PPM	ND	10.0	"							

**Duplicate (B3G2503-DUP1)**

Source: Y307485-01

Prepared: 07/25/2023 Analyzed: 07/26/2023

SAR	0.00		SAR		2.08			200	200	
Calcium PPM	66.3	10.0	mg/L		94.9			35.5	50	
Magnesium PPM	31.8	10.0	"		41.5			26.3	50	
Sodium PPM	81.5	10.0	"		96.4			16.7	50	

**Batch B3G2506 - DTPA Sorbitol Preparation**

**Blank (B3G2506-BLK1)**

Prepared: 07/25/2023 Analyzed: 07/26/2023

Boron	ND	0.100	mg/L							
-------	----	-------	------	--	--	--	--	--	--	--

**Duplicate (B3G2506-DUP1)**

Source: Y307506-23

Prepared: 07/25/2023 Analyzed: 07/26/2023

Boron	0.759	0.0995	mg/L		0.737			2.94	50	
-------	-------	--------	------	--	-------	--	--	------	----	--

Origins Laboratory, Inc.



*The results in this report apply to the samples analyzed in accordance with the chain of custody document. This analytical report must be reproduced in its entirety.*

Eagle Environmental Consulting, LLC  
 8000 W 44th Ave  
 Wheat Ridge CO 80033

Martin C Eckert III  
 Project Number: [none]  
 Project: Noble - State #36-614

**Saturated Paste - Quality Control**  
**Origins Laboratory, Inc.**

Analyte	Result	Reporting Limit	Units	Spike Level	Source Result	%REC	%REC Limits	RPD	RPD Limit	Notes
---------	--------	-----------------	-------	-------------	---------------	------	-------------	-----	-----------	-------

**Batch B3G2510 - Saturated Paste pH/EC**

**Blank (B3G2510-BLK1)**

Prepared: 07/25/2023 Analyzed: 07/26/2023

Specific Conductance (EC) ND 0.00500 mmhos/cm

**Duplicate (B3G2510-DUP1)**

**Source: Y307485-01**

Prepared: 07/25/2023 Analyzed: 07/26/2023

Specific Conductance (EC)	0.973	0.00500	mmhos/cm		1.18		19.4	25	
pH	8.01		pH Units		7.96		0.626	25	

Origins Laboratory, Inc.



*The results in this report apply to the samples analyzed in accordance with the chain of custody document. This analytical report must be reproduced in its entirety.*

Eagle Environmental Consulting, LLC  
 8000 W 44th Ave  
 Wheat Ridge CO 80033

Martin C Eckert III  
 Project Number: [none]  
 Project: Noble - State #36-614

**PAH by 8270D SIM - Quality Control**  
**Waypoint Analytical, LLC.**

Analyte	Result	Reporting Limit	Units	Spike Level	Source Result	%REC	%REC Limits	RPD	RPD Limit	Notes
---------	--------	-----------------	-------	-------------	---------------	------	-------------	-----	-----------	-------

**Batch L695170 - 3550B**

<b>MSD (L 85668-MSD-L695170)</b>		<b>Source: 85668</b>			<b>Prepared: 07/27/2023 Analyzed: 07/27/2023</b>					
Fluoranthene	0.134	0.00067	mg/Kg	0.162	<0.000394	82.7	30-130	7.7	30	
2-Methylnaphthalene	0.115	0.00201	"	0.162	<0.00194	70.9	30-130	11	30	
Pyrene	0.133	0.00067	"	0.162	<0.000643	82	30-130	3.8	30	
Indeno(1,2,3-cd)pyrene	0.0992	0.00067	"	0.162	<0.000627	61.2	30-130	2.8	30	
Fluorene	0.135	0.00067	"	0.162	<0.000286	83.3	30-130	11.7	30	
Dibenz(a,h)anthracene	0.126	0.00067	"	0.162	<0.000614	77.7	30-130	5.4	30	
Chrysene	0.127	0.00067	"	0.162	<0.000624	78.3	30-130	8.1	30	
Benzo(k)fluoranthene	0.118	0.00067	"	0.162	<0.000437	72.8	30-130	1.6	30	
Benzo(b)fluoranthene	0.099	0.00067	"	0.162	<0.000585	61.1	30-130	1.5	30	
Benzo(a)pyrene	0.133	0.00067	"	0.162	<0.000468	82	30-130	8.6	30	
Benzo(a)anthracene	0.125	0.00067	"	0.162	<0.000493	77.1	30-130	8.3	30	
Anthracene	0.14	0.00067	"	0.162	<0.000334	86.4	30-130	7.4	30	
1-Methylnaphthalene	0.116	0.00201	"	0.162	<0.00109	71.6	30-130	10.9	30	
Acenaphthene	0.123	0.00067	"	0.162	<0.000304	75.9	30-130	8.4	30	
Surrogate: Nitrobenzene-d5	57.8		"	0.325	164	57.8	29-110			
Surrogate: 4-Terphenyl-d14	75.3		"	0.325	216	75.3	33-122			
Surrogate: 2-Fluorobiphenyl	64.6		"	0.325	171	64.6	33-115			

<b>MS (L 85668-MS-L695170)</b>		<b>Source: 85668</b>			<b>Prepared: 07/27/2023 Analyzed: 07/27/2023</b>					
Indeno(1,2,3-cd)pyrene	0.0964	0.00067	mg/Kg	0.165	<0.000627	58.4	30-130			
1-Methylnaphthalene	0.104	0.00201	"	0.165	<0.00109	63	30-130			
Benzo(b)fluoranthene	0.0975	0.00067	"	0.165	<0.000585	59	30-130			
Benzo(a)pyrene	0.122	0.00067	"	0.165	<0.000468	73.9	30-130			
Benzo(a)anthracene	0.115	0.00067	"	0.165	<0.000493	69.6	30-130			
Anthracene	0.13	0.00067	"	0.165	<0.000334	78.7	30-130			
Acenaphthene	0.113	0.00067	"	0.165	<0.000304	68.4	30-130			
Pyrene	0.128	0.00067	"	0.165	<0.000643	77.5	30-130			

Origins Laboratory, Inc.



The results in this report apply to the samples analyzed in accordance with the chain of custody document. This analytical report must be reproduced in its entirety.

Eagle Environmental Consulting, LLC  
 8000 W 44th Ave  
 Wheat Ridge CO 80033

Martin C Eckert III  
 Project Number: [none]  
 Project: Noble - State #36-614

**PAH by 8270D SIM - Quality Control**  
**Waypoint Analytical, LLC.**

Analyte	Result	Reporting Limit	Units	Spike Level	Source Result	%REC	%REC Limits	RPD	RPD Limit	Notes
---------	--------	-----------------	-------	-------------	---------------	------	-------------	-----	-----------	-------

**Batch L695170 - 3550B**

<b>MS (L 85668-MS-L695170)</b>		<b>Source: 85668</b>			Prepared: 07/27/2023 Analyzed: 07/27/2023					
Benzo(k)fluoranthene	0.12	0.00067	mg/Kg	0.165	<0.000437	72.7	30-130			
Chrysene	0.117	0.00067	"	0.165	<0.000624	70.9	30-130			
Dibenz(a,h)anthracene	0.133	0.00067	"	0.165	<0.000614	80.6	30-130			
Fluoranthene	0.124	0.00067	"	0.165	<0.000394	75.1	30-130			
Fluorene	0.12	0.00067	"	0.165	<0.000286	72.7	30-130			
2-Methylnaphthalene	0.103	0.00201	"	0.165	<0.00194	62.4	30-130			
Surrogate: 4-Terphenyl-d14	70.6		"	0.33	216	70.6	33-122			
Surrogate: 2-Fluorobiphenyl	60.3		"	0.33	171	60.3	33-115			
Surrogate: Nitrobenzene-d5	51.8		"	0.33	164	51.8	29-110			

<b>LCS (LCS-L695170)</b>					Prepared: 07/27/2023 Analyzed: 07/27/2023					
Indeno(1,2,3-cd)pyrene	0.113	0.00067	mg/Kg	0.167		67.6	30-130			
1-Methylnaphthalene	0.112	0.00201	"	0.167		67	30-130			
2-Methylnaphthalene	0.11	0.00201	"	0.167		65.8	30-130			
Acenaphthene	0.122	0.00067	"	0.167		73	30-130			
Anthracene	0.131	0.00067	"	0.167		78.4	30-130			
Benzo(a)anthracene	0.129	0.00067	"	0.167		77.2	30-130			
Benzo(a)pyrene	0.139	0.00067	"	0.167		83.2	30-130			
Benzo(b)fluoranthene	0.144	0.00067	"	0.167		86.2	30-130			
Benzo(k)fluoranthene	0.146	0.00067	"	0.167		87.4	30-130			
Chrysene	0.128	0.00067	"	0.167		76.6	30-130			
Dibenz(a,h)anthracene	0.152	0.00067	"	0.167		91	30-130			
Fluorene	0.133	0.00067	"	0.167		79.6	30-130			
Pyrene	0.141	0.00067	"	0.167		84.4	30-130			
Fluoranthene	0.133	0.00067	"	0.167		79.6	30-130			
Surrogate: Nitrobenzene-d5	63.3		"	0.333		63.3	29-110			
Surrogate: 2-Fluorobiphenyl	66.3		"	0.333		66.3	33-115			

Origins Laboratory, Inc.



The results in this report apply to the samples analyzed in accordance with the chain of custody document. This analytical report must be reproduced in its entirety.

Eagle Environmental Consulting, LLC  
 8000 W 44th Ave  
 Wheat Ridge CO 80033

Martin C Eckert III  
 Project Number: [none]  
 Project: Noble - State #36-614

**PAH by 8270D SIM - Quality Control**  
**Waypoint Analytical, LLC.**

Analyte	Result	Reporting Limit	Units	Spike Level	Source Result	%REC	%REC Limits	RPD	RPD Limit	Notes
<b>Batch L695170 - 3550B</b>										
<b>LCS (LCS-L695170)</b>					Prepared: 07/27/2023 Analyzed: 07/27/2023					
Surrogate: 4-Terphenyl-d14	82.5		mg/Kg	0.333		82.5	33-122			
<b>LRB (LRB-L695170)</b>					Prepared: 07/27/2023 Analyzed: 07/27/2023					
Benzo(b)fluoranthene	ND	0.00067	mg/Kg				-			
Pyrene	ND	0.00067	"				-			
Indeno(1,2,3-cd)pyrene	ND	0.00067	"				-			
Fluorene	ND	0.00067	"				-			
Fluoranthene	ND	0.00067	"				-			
Dibenz(a,h)anthracene	ND	0.00067	"				-			
Benzo(k)fluoranthene	ND	0.00067	"				-			
1-Methylnaphthalene	ND	0.00201	"				-			
Benzo(a)pyrene	ND	0.00067	"				-			
Benzo(a)anthracene	ND	0.00067	"				-			
Anthracene	ND	0.00067	"				-			
Acenaphthene	ND	0.00067	"				-			
2-Methylnaphthalene	ND	0.00201	"				-			
Chrysene	ND	0.00067	"				-			
Surrogate: 4-Terphenyl-d14	81.9		"	0.333		81.9	33-122			
Surrogate: Nitrobenzene-d5	57.9		"	0.333		57.9	29-110			
Surrogate: 2-Fluorobiphenyl	61.8		"	0.333		61.8	33-115			

Origins Laboratory, Inc.



The results in this report apply to the samples analyzed in accordance with the chain of custody document. This analytical report must be reproduced in its entirety.

Eagle Environmental Consulting, LLC  
 8000 W 44th Ave  
 Wheat Ridge CO 80033

Martin C Eckert III  
 Project Number: [none]  
 Project: Noble - State #36-614

**Total Metals by 7196A - Quality Control**  
**Waypoint Analytical, LLC.**

Analyte	Result	Reporting Limit	Units	Spike Level	Source Result	%REC	%REC Limits	RPD	RPD Limit	Notes
<b>Batch L695476 -</b>										
<b>DUP (L 85664-DUP)</b>		<b>Source: Y307515-01</b>			Prepared: Analyzed: 07/28/2023					
Chromium, Hexavalent	ND	0.5	mg/Kg		<0.500		-	0	20	
<b>MS (L 85664-MS)</b>		<b>Source: Y307515-01</b>			Prepared: Analyzed: 07/28/2023					
Chromium, Hexavalent	33	2.5	mg/Kg	39.1	<1.22	84	75-125			
<b>LCS (LCS)</b>		Prepared: Analyzed: 07/28/2023								
Chromium, Hexavalent	7.29	0.5	mg/Kg	8		91	75-125			
<b>LRB (LRB)</b>		Prepared: Analyzed: 07/28/2023								
Chromium, Hexavalent	ND	0.5	mg/Kg				-			

Origins Laboratory, Inc.



*The results in this report apply to the samples analyzed in accordance with the chain of custody document. This analytical report must be reproduced in its entirety.*

Eagle Environmental Consulting, LLC  
8000 W 44th Ave  
Wheat Ridge CO 80033

Martin C Eckert III  
Project Number: [none]  
Project: Noble - State #36-614

---

### Notes and Definitions

U Sample is Non-Detect.

QM-07 The spike recovery was outside acceptance limits for the MS and/or MSD. The batch was accepted based on acceptable LCS recovery.

ND Analyte NOT DETECTED at or above the reporting limit

RPD Relative Percent Difference

All soil results are reported on a wet weight basis.

Calculated results may use J-flag data (instead of reported "ND") as part of calculation to provide a more accurate result.

Origins Laboratory, Inc.



*The results in this report apply to the samples analyzed in accordance with the chain of custody document. This analytical report must be reproduced in its entirety.*



August 07, 2023

Eagle Environmental Consulting, LLC

Martin C Eckert III

8000 W 44th Ave

Wheat Ridge CO 80033

Project Name - Noble - State 36-614

Project Number - -

Attached are your analytical results for Noble - State 36-614 received by Origins Laboratory, Inc. July 25, 2023. This project is associated with Origins project number Y307551-01.

The analytical results in the following report were analyzed under the guidelines of EPA Methods. These methods are identified as follows; "SW" are defined in SW-846, "EPA" are defined in 40CFR part 136 and "SM" are defined in the most current revision of Standard Methods For the Examination of Water and Wastewater.

The analytical results apply specifically to the samples and analyses specified per the attached Chain of Custody. As such, this report shall not be reproduced except in full, without the written approval of Origin's laboratory.

Unless otherwise noted, the analytical results for all soil samples are reported on a wet weight basis. All analytical analyses were performed under NELAP guidelines unless noted by a data qualifier.

Any holding time exceedances, deviations from the method specifications or deviations from Origins Laboratory's Standard Operating Procedures are outlined in the case narrative.

Thank you for selecting Origins for your analytical needs. Please contact us with any questions concerning this report, or if we can help with anything at all.

Origins Laboratory, Inc.  
303.433.1322  
o-squad@oelabinc.com



Eagle Environmental Consulting, LLC  
8000 W 44th Ave  
Wheat Ridge CO 80033

Martin C Eckert III  
Project Number: -  
Project: Noble - State 36-614

CROSS REFERENCE REPORT

Sample ID	Laboratory ID	Matrix	Date Sampled	Date Received
FL-SS-06@3'	Y307551-01	Soil	July 25, 2023 10:41	07/25/2023 13:50

A pH rerun was requested per Grace's email on 08/02/2023. No errors were found in the original data, all three results are reported. JAB

Origins Laboratory, Inc.



*The results in this report apply to the samples analyzed in accordance with the chain of custody document. This analytical report must be reproduced in its entirety.*



Eagle Environmental Consulting, LLC  
 8000 W 44th Ave  
 Wheat Ridge CO 80033

Martin C Eckert III  
 Project Number: -  
 Project: Noble - State 36-614

Origins Laboratory

F-012207-01-R1  
 Effective Date: 01/09/12

**Sample Receipt Checklist**

Origins Work Order: 307551

Client: Eagle  
 Client Project ID: State 36-6

Checklist Completed by: TSH/KAS  
 Date/time completed: 7/25/23

Shipped Via: HD  
 (UPS, FedEx, Hand Delivered, Pick-up, etc.)  
 Airbill #: N/A

Matrix(s) Received: (Check all that apply):  Soil/Solid  Water  Other: \_\_\_\_\_

Cooler Number/Temperature: 1/6 °C / \_\_\_\_\_ °C / \_\_\_\_\_ °C (Describe)

Thermometer ID: T004

Requirement Description	Yes	No	N/A	Comments (if any)
If samples require cooling, was the temperature between 0°C to ≤ 6°C <sup>(1)</sup> ?	<input checked="" type="checkbox"/>			
Is there ice present (document if blue ice is used)	<input checked="" type="checkbox"/>			
Are custody seals present on cooler? (if so, document in comments if they are signed and dated, broken or intact)		<input checked="" type="checkbox"/>		
Are custody seals present on each sample container? (if so, document in comments if they are signed and dated, broken or intact)		<input checked="" type="checkbox"/>		
Were all samples received intact <sup>(1)</sup> ?	<input checked="" type="checkbox"/>			
Was adequate sample volume provided <sup>(1)</sup> ?	<input checked="" type="checkbox"/>			
Are short holding time analytes or samples with HTs due within 48 hours present <sup>(1)</sup> ?		<input checked="" type="checkbox"/>		
Is a chain-of-custody (COC) present and filled out completely <sup>(1)</sup> ?	<input checked="" type="checkbox"/>			
Does the COC agree with the number and type of sample bottles received <sup>(1)</sup> ?	<input checked="" type="checkbox"/>			
Do the sample IDs on the bottle labels match the COC <sup>(1)</sup> ?	<input checked="" type="checkbox"/>			
Is the COC properly relinquished by the client with date and time recorded <sup>(1)</sup> ?	<input checked="" type="checkbox"/>			
For volatiles in water – Is there headspace (> ¼ inch bubble) present? <b>If yes, contact client and note in narrative.</b>			<input checked="" type="checkbox"/>	
Are samples preserved that require preservation and was it checked <sup>(1)</sup> ? (note ID of confirmation instrument used in comments) / (preservation is not confirmed for subcontracted analyses in order to insure sample integrity)/(pH <2 for samples preserved with HNO <sub>3</sub> , HCL, H <sub>2</sub> SO <sub>4</sub> ) / (pH >10 for samples preserved with NaAsO <sub>2</sub> +NaOH, ZnAc+NaOH)			<input checked="" type="checkbox"/>	
Additional Comments (if any):				

<sup>(1)</sup> If NO, then contact the client before proceeding with analysis and note date/time and person contacted as well as the corrective action to in the additional comments (above) and the case narrative.

Reviewed by (Project Manager) [Signature] Date/Time Reviewed 7/27/23

Origins Laboratory, Inc.

[Signature]

The results in this report apply to the samples analyzed in accordance with the chain of custody document. This analytical report must be reproduced in its entirety.

Eagle Environmental Consulting, LLC  
 8000 W 44th Ave  
 Wheat Ridge CO 80033

Martin C Eckert III  
 Project Number: -  
 Project: Noble - State 36-614

**FL-SS-06@3'**

**7/25/2023 10:41:00AM**

Analyte	Result	Min Detection Limit	Reporting Limit	Units	Dilution	Batch	Prepared	Analyzed	Notes
---------	--------	---------------------	-----------------	-------	----------	-------	----------	----------	-------

**Origins Laboratory, Inc.**  
**Y307551-01 (Soil)**

**Boron (DTPA Sorbitol)**

Boron	ND		0.0981	mg/L	1	B3G2714	07/27/2023	07/28/2023	
-------	----	--	--------	------	---	---------	------------	------------	--

**DRO/ORO by EPA 8015D**

Diesel (C10-C28)	ND		25.0	mg/kg	1	B3G2721	07/27/2023	07/28/2023	U
Residual Range Organics (C28-C40)	ND		100	"	"	"	"	"	U

Surrogate: o-Terphenyl	118 %		50-150			"	"	"	
------------------------	-------	--	--------	--	--	---	---	---	--

**GBTEX+TMBs by 8260D**

1,2,4-Trimethylbenzene	ND		0.00200	mg/kg	1	B3G2620	07/26/2023	07/27/2023	U
1,3,5-Trimethylbenzene	ND		0.00200	"	"	"	"	"	U
Benzene	ND		0.00200	"	"	"	"	"	U
Ethylbenzene	ND		0.00200	"	"	"	"	"	U
Naphthalene	ND		0.00380	"	"	"	"	"	U
Toluene	ND		0.00200	"	"	"	"	"	U
Xylenes, total	ND		0.00200	"	"	"	"	"	U
Gasoline Range Hydrocarbons	ND		0.200	"	"	"	"	"	U

Origins Laboratory, Inc.



The results in this report apply to the samples analyzed in accordance with the chain of custody document. This analytical report must be reproduced in its entirety.

Eagle Environmental Consulting, LLC  
 8000 W 44th Ave  
 Wheat Ridge CO 80033

Martin C Eckert III  
 Project Number: -  
 Project: Noble - State 36-614

FL-SS-06@3'

7/25/2023 10:41:00AM

Analyte	Result	Min Detection Limit	Reporting Limit	Units	Dilution	Batch	Prepared	Analyzed	Notes
---------	--------	---------------------	-----------------	-------	----------	-------	----------	----------	-------

**Origins Laboratory, Inc.**  
 Y307551-01 (Soil)

**GBTEX+TMBs by 8260D**

Surrogate: 1,2-Dichloroethane-d4	109 %		70-130			B3G26 20	07/26/2023	07/27/2023	
Surrogate: Toluene-d8	97.8 %		70-130			"	"	"	
Surrogate: 4-Bromofluorobenzene	104 %		70-130			"	"	"	

**Metals by Saturated Paste by EPA 6010**

Calcium	2.25		0.499	meq/L	10	[CALC]	07/27/2023	07/28/2023	
Magnesium	1.29		0.823	"	"	"	"	"	
Sodium	1.74		0.435	"	"	"	"	"	

**PAH by 8270D SIM**

1-Methylnaphthalene	ND	0.00109	0.00201	mg/Kg	1	L695430	07/28/2023	07/28/2023	
2-Methylnaphthalene	ND	0.00194	0.00201	"	"	"	"	"	
Acenaphthene	ND	0.000304	0.00067	"	"	"	"	"	
Anthracene	0.000501	0.000334	0.00067	"	"	"	"	"	J
Benzo(a)anthracene	0.000687	0.000493	0.00067	"	"	"	"	"	
Benzo(a)pyrene	0.000837	0.000468	0.00067	"	"	"	"	"	
Benzo(b)fluoranthene	0.000772	0.000585	0.00067	"	"	"	"	"	
Benzo(k)fluoranthene	ND	0.000437	0.00067	"	"	"	"	"	
Chrysene	0.000923	0.000624	0.00067	"	"	"	"	"	
Dibenz(a,h)anthracene	ND	0.000614	0.00067	"	"	"	"	"	
Fluoranthene	0.00229	0.000394	0.00067	"	"	"	"	"	

Origins Laboratory, Inc.



The results in this report apply to the samples analyzed in accordance with the chain of custody document. This analytical report must be reproduced in its entirety.

Eagle Environmental Consulting, LLC  
 8000 W 44th Ave  
 Wheat Ridge CO 80033

Martin C Eckert III  
 Project Number: -  
 Project: Noble - State 36-614

**FL-SS-06@3'**

**7/25/2023 10:41:00AM**

Analyte	Result	Min Detection Limit	Reporting Limit	Units	Dilution	Batch	Prepared	Analyzed	Notes
---------	--------	---------------------	-----------------	-------	----------	-------	----------	----------	-------

**Waypoint Analytical, LLC.**  
**Y307551-01 (Soil)**

**PAH by 8270D SIM**

Fluorene	ND	0.000286	0.00067	mg/Kg	1	L695430	07/28/2023	07/28/2023	
Indeno(1,2,3-cd)pyrene	ND	0.000627	0.00067	"	"	"	"	"	
Pyrene	<b>0.00163</b>	<b>0.000643</b>	0.00067	"	"	"	"	"	

Surrogate: 2-Fluorobiphenyl	57.1 %		33-115			"	"	"	
Surrogate: 4-Terphenyl-d14	71.5 %		33-122			"	"	"	
Surrogate: Nitrobenzene-d5	53.4 %		29-110			"	"	"	

**pH in Soil by 9045D**

pH	<b>8.41</b>			pH Units	1	B3G2716	07/27/2023	07/29/2023	
----	-------------	--	--	----------	---	---------	------------	------------	--

**SAR by 20B Saturated Paste**

SAR	<b>1.31</b>			SAR	1	B3G2711	07/27/2023	07/28/2023	
-----	-------------	--	--	-----	---	---------	------------	------------	--

**Specific Conductance Mod. 9050A**

Specific Conductance (EC)	<b>0.472</b>		0.00500	mmhos/cm	1	B3G2716	07/27/2023	07/29/2023	
---------------------------	--------------	--	---------	----------	---	---------	------------	------------	--

**Table 915 metals by EPA 6020B**

Arsenic	<b>2.26</b>		0.0906	mg/kg	10	B3G2602	07/26/2023	07/26/2023	
Barium	<b>31.4</b>		9.06	"	"	"	"	"	

Origins Laboratory, Inc.



*The results in this report apply to the samples analyzed in accordance with the chain of custody document. This analytical report must be reproduced in its entirety.*

Eagle Environmental Consulting, LLC  
 8000 W 44th Ave  
 Wheat Ridge CO 80033

Martin C Eckert III  
 Project Number: -  
 Project: Noble - State 36-614

**FL-SS-06@3'**

**7/25/2023 10:41:00AM**

Analyte	Result	Min Detection Limit	Reporting Limit	Units	Dilution	Batch	Prepared	Analyzed	Notes
---------	--------	---------------------	-----------------	-------	----------	-------	----------	----------	-------

**Origins Laboratory, Inc.**  
**Y307551-01 (Soil)**

**Table 915 metals by EPA 6020B**

Cadmium	ND		0.0906	mg/kg	10	B3G2602	07/26/2023	07/26/2023	
Copper	ND		9.06	"	"	"	"	"	
Lead	ND		9.06	"	"	"	"	"	
Nickel	ND		9.06	"	"	"	"	"	
Selenium	<b>0.150</b>		0.0906	"	"	"	"	07/27/2023	
Silver	ND		0.0906	"	"	"	"	07/26/2023	
Zinc	ND		90.6	"	"	"	"	"	

**Total Metals by 7196A**

Chromium, Hexavalent	ND	0.245	0.503	mg/Kg	1	L695796	07/25/2023	07/31/2023	
----------------------	----	-------	-------	-------	---	---------	------------	------------	--

Origins Laboratory, Inc.



*The results in this report apply to the samples analyzed in accordance with the chain of custody document. This analytical report must be reproduced in its entirety.*

Eagle Environmental Consulting, LLC  
8000 W 44th Ave  
Wheat Ridge CO 80033

Martin C Eckert III  
Project Number: -  
Project: Noble - State 36-614

**FL-SS-06@3'**

**7/25/2023 10:41:00AM**

Analyte	Result	Min Detection Limit	Reporting Limit	Units	Dilution	Batch	Prepared	Analyzed	Notes
---------	--------	---------------------	-----------------	-------	----------	-------	----------	----------	-------

**Origins Laboratory, Inc.**  
**Y307551-01RE1 (Soil)**

**pH in Soil by 9045D**

pH	8.30			pH Units	1	B3H0316	07/27/2023	08/04/2023	
----	------	--	--	----------	---	---------	------------	------------	--

Origins Laboratory, Inc.



*The results in this report apply to the samples analyzed in accordance with the chain of custody document. This analytical report must be reproduced in its entirety.*

Eagle Environmental Consulting, LLC  
 8000 W 44th Ave  
 Wheat Ridge CO 80033

Martin C Eckert III  
 Project Number: -  
 Project: Noble - State 36-614

**FL-SS-06@3'**

**7/25/2023 10:41:00AM**

Analyte	Result	Min Detection Limit	Reporting Limit	Units	Dilution	Batch	Prepared	Analyzed	Notes
---------	--------	---------------------	-----------------	-------	----------	-------	----------	----------	-------

**Origins Laboratory, Inc.**  
**Y307551-01RE2 (Soil)**

**pH in Soil by 9045D**

pH	8.29			pH Units	1	B3H0316	07/27/2023	08/04/2023	
----	------	--	--	----------	---	---------	------------	------------	--

Origins Laboratory, Inc.



*The results in this report apply to the samples analyzed in accordance with the chain of custody document. This analytical report must be reproduced in its entirety.*

Eagle Environmental Consulting, LLC  
 8000 W 44th Ave  
 Wheat Ridge CO 80033

Martin C Eckert III  
 Project Number: -  
 Project: Noble - State 36-614

**Volatile Organic Compounds by GC/MS SW846 8260D - Quality Control**  
**Origins Laboratory, Inc.**

Analyte	Result	Reporting Limit	Units	Spike Level	Source Result	%REC	%REC Limits	RPD	RPD Limit	Notes
---------	--------	-----------------	-------	-------------	---------------	------	-------------	-----	-----------	-------

**Batch B3G2620 - EPA 5030 (soil)**

**Blank (B3G2620-BLK1)**

Prepared: 07/26/2023 Analyzed: 07/26/2023

1,2,4-Trimethylbenzene	ND	0.00200	mg/kg							U
1,3,5-Trimethylbenzene	ND	0.00200	"							U
Benzene	ND	0.00200	"							U
Ethylbenzene	ND	0.00200	"							U
Naphthalene	ND	0.00380	"							U
Toluene	ND	0.00200	"							U
Xylenes, total	ND	0.00200	"							U
Gasoline Range Hydrocarbons	ND	0.200	"							U
Surrogate: 1,2-Dichloroethane-d4	0.14		"	0.125	110		70-130			
Surrogate: Toluene-d8	0.12		"	0.125	95.6		70-130			
Surrogate: 4-Bromofluorobenzene	0.13		"	0.125	102		70-130			

Origins Laboratory, Inc.



*The results in this report apply to the samples analyzed in accordance with the chain of custody document. This analytical report must be reproduced in its entirety.*

Eagle Environmental Consulting, LLC  
 8000 W 44th Ave  
 Wheat Ridge CO 80033

Martin C Eckert III  
 Project Number: -  
 Project: Noble - State 36-614

**Volatile Organic Compounds by GC/MS SW846 8260D - Quality Control**  
**Origins Laboratory, Inc.**

Analyte	Result	Reporting Limit	Units	Spike Level	Source Result	%REC	%REC Limits	RPD	RPD Limit	Notes
---------	--------	-----------------	-------	-------------	---------------	------	-------------	-----	-----------	-------

Batch B3G2620 - EPA 5030 (soil)

**LCS (B3G2620-BS1)**

Prepared: 07/26/2023 Analyzed: 07/26/2023

1,2,4-Trimethylbenzene	0.0962	0.00200	mg/kg	0.100		96.2	70-130			
1,3,5-Trimethylbenzene	0.0969	0.00200	"	0.100		96.9	70-130			
Benzene	0.0864	0.00200	"	0.100		86.4	70-130			
Ethylbenzene	0.0908	0.00200	"	0.100		90.8	70-130			
Naphthalene	0.0997	0.00380	"	0.100		99.7	70-130			
Toluene	0.0862	0.00200	"	0.100		86.2	70-130			
o-Xylene	0.0859	0.00200	"	0.100		85.9	70-130			
m,p-Xylene	0.192	0.00400	"	0.200		95.9	70-130			
Surrogate: 1,2-Dichloroethane-d4	0.13		"	0.125		105	70-130			
Surrogate: Toluene-d8	0.13		"	0.125		101	70-130			
Surrogate: 4-Bromofluorobenzene	0.13		"	0.125		103	70-130			

Origins Laboratory, Inc.



The results in this report apply to the samples analyzed in accordance with the chain of custody document. This analytical report must be reproduced in its entirety.

Eagle Environmental Consulting, LLC  
 8000 W 44th Ave  
 Wheat Ridge CO 80033

Martin C Eckert III  
 Project Number: -  
 Project: Noble - State 36-614

**Volatile Organic Compounds by GC/MS SW846 8260D - Quality Control**  
**Origins Laboratory, Inc.**

Analyte	Result	Reporting Limit	Units	Spike Level	Source Result	%REC	%REC Limits	RPD	RPD Limit	Notes
---------	--------	-----------------	-------	-------------	---------------	------	-------------	-----	-----------	-------

Batch B3G2620 - EPA 5030 (soil)

Matrix Spike (B3G2620-MS1)	Source: Y307512-01			Prepared: 07/26/2023 Analyzed: 07/26/2023						
1,2,4-Trimethylbenzene	0.0972	0.00200	mg/kg	0.100	ND	97.2	70-130			
1,3,5-Trimethylbenzene	0.0999	0.00200	"	0.100	ND	99.9	70-130			
Benzene	0.0802	0.00200	"	0.100	ND	80.2	70-130			
Ethylbenzene	0.0957	0.00200	"	0.100	ND	95.7	70-130			
Naphthalene	0.0820	0.00380	"	0.100	ND	82.0	70-130			
Toluene	0.0827	0.00200	"	0.100	ND	82.7	70-130			
o-Xylene	0.0869	0.00200	"	0.100	ND	86.9	70-130			
m,p-Xylene	0.202	0.00400	"	0.200	ND	101	70-130			
Surrogate: 1,2-Dichloroethane-d4	0.12		"	0.125		93.5	70-130			
Surrogate: Toluene-d8	0.13		"	0.125		103	70-130			
Surrogate: 4-Bromofluorobenzene	0.13		"	0.125		106	70-130			

Origins Laboratory, Inc.



*The results in this report apply to the samples analyzed in accordance with the chain of custody document. This analytical report must be reproduced in its entirety.*

Eagle Environmental Consulting, LLC  
 8000 W 44th Ave  
 Wheat Ridge CO 80033

Martin C Eckert III  
 Project Number: -  
 Project: Noble - State 36-614

**Volatile Organic Compounds by GC/MS SW846 8260D - Quality Control**  
**Origins Laboratory, Inc.**

Analyte	Result	Reporting Limit	Units	Spike Level	Source Result	%REC	%REC Limits	RPD	RPD Limit	Notes
---------	--------	-----------------	-------	-------------	---------------	------	-------------	-----	-----------	-------

Batch B3G2620 - EPA 5030 (soil)

Matrix Spike Dup (B3G2620-MSD1)	Source: Y307512-01			Prepared: 07/26/2023 Analyzed: 07/26/2023						
1,2,4-Trimethylbenzene	0.0898	0.00200	mg/kg	0.100	ND	89.8	70-130	7.87	20	
1,3,5-Trimethylbenzene	0.0911	0.00200	"	0.100	ND	91.1	70-130	9.21	20	
Benzene	0.0799	0.00200	"	0.100	ND	79.9	70-130	0.450	20	
Ethylbenzene	0.0860	0.00200	"	0.100	ND	86.0	70-130	10.7	20	
Naphthalene	0.0895	0.00380	"	0.100	ND	89.5	70-130	8.70	20	
Toluene	0.0813	0.00200	"	0.100	ND	81.3	70-130	1.76	20	
o-Xylene	0.0809	0.00200	"	0.100	ND	80.9	70-130	7.08	20	
m,p-Xylene	0.183	0.00400	"	0.200	ND	91.6	70-130	9.68	20	
Surrogate: 1,2-Dichloroethane-d4	0.13		"	0.125		101	70-130			
Surrogate: Toluene-d8	0.13		"	0.125		101	70-130			
Surrogate: 4-Bromofluorobenzene	0.13		"	0.125		103	70-130			

Origins Laboratory, Inc.



*The results in this report apply to the samples analyzed in accordance with the chain of custody document. This analytical report must be reproduced in its entirety.*

Eagle Environmental Consulting, LLC  
 8000 W 44th Ave  
 Wheat Ridge CO 80033

Martin C Eckert III  
 Project Number: -  
 Project: Noble - State 36-614

**Volatile Organic Compounds by GC/MS SW846 8260D - Quality Control**  
**Origins Laboratory, Inc.**

Analyte	Result	Reporting Limit	Units	Spike Level	Source Result	%REC	%REC Limits	RPD	RPD Limit	Notes
<b>Batch B3G2721 - EPA 3550B</b>										
<b>Blank (B3G2721-BLK1)</b>										
					Prepared: 07/27/2023 Analyzed: 07/27/2023					
Diesel (C10-C28)	ND	25.0	mg/kg							U
Residual Range Organics (C28-C40)	ND	100	"							U
Surrogate: o-Terphenyl	30		"	24.9		122	50-150			

Origins Laboratory, Inc.



*The results in this report apply to the samples analyzed in accordance with the chain of custody document. This analytical report must be reproduced in its entirety.*

Eagle Environmental Consulting, LLC  
 8000 W 44th Ave  
 Wheat Ridge CO 80033

Martin C Eckert III  
 Project Number: -  
 Project: Noble - State 36-614

**Extractable Petroleum Hydrocarbons by 8015D - Quality Control**  
**Origins Laboratory, Inc.**

Analyte	Result	Reporting Limit	Units	Spike Level	Source Result	%REC	%REC Limits	RPD	RPD Limit	Notes
---------	--------	-----------------	-------	-------------	---------------	------	-------------	-----	-----------	-------

**Batch B3G2721 - EPA 3550B**

**LCS (B3G2721-BS1)**

Prepared: 07/27/2023 Analyzed: 07/28/2023

Diesel (C10-C28)	836	50.0	mg/kg	1000		83.6	70-130			
Residual Range Organics (C28-C40)	980	200	"	1000		98.0	70-130			
Surrogate: o-Terphenyl	60		"	49.8		120	50-150			

Origins Laboratory, Inc.



*The results in this report apply to the samples analyzed in accordance with the chain of custody document. This analytical report must be reproduced in its entirety.*

Eagle Environmental Consulting, LLC  
 8000 W 44th Ave  
 Wheat Ridge CO 80033

Martin C Eckert III  
 Project Number: -  
 Project: Noble - State 36-614

**Extractable Petroleum Hydrocarbons by 8015D - Quality Control**  
**Origins Laboratory, Inc.**

Analyte	Result	Reporting Limit	Units	Spike Level	Source Result	%REC	%REC Limits	RPD	RPD Limit	Notes
---------	--------	-----------------	-------	-------------	---------------	------	-------------	-----	-----------	-------

**Batch B3G2721 - EPA 3550B**

<b>Matrix Spike (B3G2721-MS1)</b>	<b>Source: Y307550-01</b>			<b>Prepared: 07/27/2023 Analyzed: 07/28/2023</b>						
Diesel (C10-C28)	836	50.0	mg/kg	1000	ND	83.6	70-130			
Residual Range Organics (C28-C40)	1050	200	"	1000	ND	105	70-130			
Surrogate: o-Terphenyl	57		"	49.8		115	50-150			

Origins Laboratory, Inc.



*The results in this report apply to the samples analyzed in accordance with the chain of custody document. This analytical report must be reproduced in its entirety.*

Eagle Environmental Consulting, LLC  
 8000 W 44th Ave  
 Wheat Ridge CO 80033

Martin C Eckert III  
 Project Number: -  
 Project: Noble - State 36-614

**Extractable Petroleum Hydrocarbons by 8015D - Quality Control**  
**Origins Laboratory, Inc.**

Analyte	Result	Reporting Limit	Units	Spike Level	Source Result	%REC	%REC Limits	RPD	RPD Limit	Notes
---------	--------	-----------------	-------	-------------	---------------	------	-------------	-----	-----------	-------

**Batch B3G2721 - EPA 3550B**

<b>Matrix Spike Dup (B3G2721-MSD1)</b>	<b>Source: Y307550-01</b>		<b>Prepared: 07/27/2023 Analyzed: 07/28/2023</b>							
Diesel (C10-C28)	843	50.0	mg/kg	1000	ND	84.3	70-130	0.771	35	
Residual Range Organics (C28-C40)	1020	200	"	1000	ND	102	70-130	2.68	35	
<i>Surrogate: o-Terphenyl</i>	58		"	49.8		116	50-150			

Origins Laboratory, Inc.



*The results in this report apply to the samples analyzed in accordance with the chain of custody document. This analytical report must be reproduced in its entirety.*

Eagle Environmental Consulting, LLC  
 8000 W 44th Ave  
 Wheat Ridge CO 80033

Martin C Eckert III  
 Project Number: -  
 Project: Noble - State 36-614

**Extractable Petroleum Hydrocarbons by 8015D - Quality Control**  
**Origins Laboratory, Inc.**

Analyte	Result	Reporting Limit	Units	Spike Level	Source Result	%REC	%REC Limits	RPD	RPD Limit	Notes
---------	--------	-----------------	-------	-------------	---------------	------	-------------	-----	-----------	-------

**Metals by EPA 6000/7000 Series Methods - Quality Control**  
**Origins Laboratory, Inc.**

Analyte	Result	Reporting Limit	Units	Spike Level	Source Result	%REC	%REC Limits	RPD	RPD Limit	Notes
---------	--------	-----------------	-------	-------------	---------------	------	-------------	-----	-----------	-------

**Batch B3G2602 - EPA 3050B**

**LCS (B3G2602-BS1)**

Prepared: 07/26/2023 Analyzed: 07/26/2023

Arsenic	0.0534	0.000100	mg/kg	0.0500		107	80-120			
Barium	5.13	0.0100	"	5.00		103	80-120			
Cadmium	0.0529	0.000100	"	0.0500		106	80-120			
Copper	0.533	0.0100	"	0.500		107	80-120			
Lead	0.0524	0.0100	"	0.0500		105	80-120			
Nickel	0.0532	0.0100	"	0.0500		106	80-120			
Selenium	0.0525	0.000100	"	0.0500		105	80-120			
Silver	0.0516	0.000100	"	0.0500		103	80-120			
Zinc	0.526	0.100	"	0.500		105	80-120			

**Matrix Spike (B3G2602-MS1)**

**Source: Y307551-01**

Prepared: 07/26/2023 Analyzed: 07/26/2023

Arsenic	6.43	0.0943	mg/kg	4.71	2.26	88.3	75-125			
Barium	524	9.43	"	471	31.4	105	75-125			
Cadmium	5.23	0.0943	"	4.71	0.0761	109	75-125			
Copper	54.4	9.43	"	47.1	4.10	107	75-125			
Lead	8.18	9.43	"	4.71	3.57	97.8	75-125			
Nickel	7.50	9.43	"	4.71	2.68	102	75-125			
Selenium	4.59	0.0943	"	4.71	0.150	94.3	75-125			
Silver	5.09	0.0943	"	4.71	0.0109	108	75-125			
Zinc	63.8	94.3	"	47.1	12.1	110	75-125			

**Matrix Spike Dup (B3G2602-MSD1)**

**Source: Y307551-01**

Prepared: 07/26/2023 Analyzed: 07/26/2023

Origins Laboratory, Inc.



*The results in this report apply to the samples analyzed in accordance with the chain of custody document. This analytical report must be reproduced in its entirety.*

Eagle Environmental Consulting, LLC  
 8000 W 44th Ave  
 Wheat Ridge CO 80033

Martin C Eckert III  
 Project Number: -  
 Project: Noble - State 36-614

**Metals by EPA 6000/7000 Series Methods - Quality Control**  
**Origins Laboratory, Inc.**

Analyte	Result	Reporting Limit	Units	Spike Level	Source Result	%REC	%REC Limits	RPD	RPD Limit	Notes
---------	--------	-----------------	-------	-------------	---------------	------	-------------	-----	-----------	-------

Batch B3G2602 - EPA 3050B

Matrix Spike Dup (B3G2602-MSD1)	Source: Y307551-01			Prepared: 07/26/2023 Analyzed: 07/26/2023						
Arsenic	6.38	0.0924	mg/kg	4.62	2.26	89.1	75-125	0.667	20	
Barium	492	9.24	"	462	31.4	99.6	75-125	6.38	20	
Cadmium	4.81	0.0924	"	4.62	0.0761	102	75-125	8.50	20	
Copper	51.3	9.24	"	46.2	4.10	102	75-125	6.00	20	
Lead	7.97	9.24	"	4.62	3.57	95.1	75-125	2.64	20	
Nickel	7.65	9.24	"	4.62	2.68	108	75-125	1.92	20	
Selenium	4.67	0.0924	"	4.62	0.150	97.7	75-125	1.53	20	
Silver	4.66	0.0924	"	4.62	0.0109	101	75-125	8.76	20	
Zinc	59.9	92.4	"	46.2	12.1	103	75-125	6.26	20	

Origins Laboratory, Inc.



*The results in this report apply to the samples analyzed in accordance with the chain of custody document. This analytical report must be reproduced in its entirety.*

Eagle Environmental Consulting, LLC  
 8000 W 44th Ave  
 Wheat Ridge CO 80033

Martin C Eckert III  
 Project Number: -  
 Project: Noble - State 36-614

**Classical Chemistry Parameters - Quality Control**  
**Origins Laboratory, Inc.**

Analyte	Result	Reporting Limit	Units	Spike Level	Source Result	%REC	%REC Limits	RPD	RPD Limit	Notes
---------	--------	-----------------	-------	-------------	---------------	------	-------------	-----	-----------	-------

**Batch B3G2711 - Saturated Paste Metals**

**Blank (B3G2711-BLK1)**

Prepared: 07/27/2023 Analyzed: 07/28/2023

Calcium PPM	ND	10.0	mg/L							
SAR	0.00		SAR							
Magnesium PPM	ND	10.0	mg/L							
Sodium PPM	ND	10.0	"							

**Duplicate (B3G2711-DUP1)**

Source: Y307510-02

Prepared: 07/27/2023 Analyzed: 07/28/2023

SAR	0.00		SAR		0.105			200	200	
Calcium PPM	9.91	10.0	mg/L		11.2			12.2	50	
Magnesium PPM	2.09	10.0	"		2.33			10.9	50	
Sodium PPM	1.74	10.0	"		1.48			16.1	50	

**Batch B3G2714 - DTPA Sorbitol Preparation**

**Blank (B3G2714-BLK1)**

Prepared: 07/27/2023 Analyzed: 07/28/2023

Boron	ND	0.100	mg/L							
-------	----	-------	------	--	--	--	--	--	--	--

**Duplicate (B3G2714-DUP1)**

Source: Y307512-05

Prepared: 07/27/2023 Analyzed: 07/28/2023

Boron	ND	0.0987	mg/L		ND				50	
-------	----	--------	------	--	----	--	--	--	----	--

Origins Laboratory, Inc.



*The results in this report apply to the samples analyzed in accordance with the chain of custody document. This analytical report must be reproduced in its entirety.*

Eagle Environmental Consulting, LLC  
 8000 W 44th Ave  
 Wheat Ridge CO 80033

Martin C Eckert III  
 Project Number: -  
 Project: Noble - State 36-614

**Saturated Paste - Quality Control**  
**Origins Laboratory, Inc.**

Analyte	Result	Reporting Limit	Units	Spike Level	Source Result	%REC	%REC Limits	RPD	RPD Limit	Notes
<b>Batch B3G2716 - Saturated Paste pH/EC</b>										
<b>Blank (B3G2716-BLK1)</b>					Prepared: 07/27/2023 Analyzed: 07/29/2023					
Specific Conductance (EC)	ND	0.00500	mmhos/cm							
<b>Duplicate (B3G2716-DUP1)</b>					Source: Y307510-02 Prepared: 07/27/2023 Analyzed: 07/29/2023					
pH	7.33		pH Units		7.50		2.29	25		
Specific Conductance (EC)	0.0920	0.00500	mmhos/cm		0.101		9.33	25		
<b>Batch B3H0316 - Saturated Paste pH/EC</b>										
<b>Duplicate (B3H0316-DUP1)</b>					Source: Y308062-01 Prepared: 08/03/2023 Analyzed: 08/04/2023					
pH	8.34		pH Units		8.35		0.120	25		

Origins Laboratory, Inc.



*The results in this report apply to the samples analyzed in accordance with the chain of custody document. This analytical report must be reproduced in its entirety.*

Eagle Environmental Consulting, LLC  
 8000 W 44th Ave  
 Wheat Ridge CO 80033

Martin C Eckert III  
 Project Number: -  
 Project: Noble - State 36-614

**PAH by 8270D SIM - Quality Control**  
**Waypoint Analytical, LLC.**

Analyte	Result	Reporting Limit	Units	Spike Level	Source Result	%REC	%REC Limits	RPD	RPD Limit	Notes
---------	--------	-----------------	-------	-------------	---------------	------	-------------	-----	-----------	-------

**Batch L695430 - 3550B**

<b>MSD (L 86230-MSD-L695430)</b>	<b>Source: 86230</b>		<b>Prepared: 07/28/2023 Analyzed: 07/28/2023</b>							
Fluoranthene	0.116	0.00067	mg/Kg	0.162	<0.000394	71.6	30-130	4.2	30	
Acenaphthene	0.106	0.00067	"	0.162	<0.000304	65.4	30-130	3.7	30	
Benzo(a)anthracene	0.108	0.00067	"	0.162	<0.000493	66.6	30-130	3.6	30	
Benzo(a)pyrene	0.113	0.00067	"	0.162	<0.000468	69.7	30-130	2.6	30	
Benzo(b)fluoranthene	0.0827	0.00067	"	0.162	<0.000585	51	30-130	23.7	30	
Benzo(k)fluoranthene	0.0984	0.00067	"	0.162	<0.000437	60.7	30-130	12	30	
Dibenz(a,h)anthracene	0.102	0.00067	"	0.162	<0.000614	62.9	30-130	38	30	*
Fluorene	0.118	0.00067	"	0.162	<0.000286	72.8	30-130	0.8	30	
Indeno(1,2,3-cd)pyrene	0.0765	0.00067	"	0.162	<0.000627	47.2	30-130	42.6	30	*
Pyrene	0.118	0.00067	"	0.162	<0.000643	72.8	30-130	4.9	30	
Chrysene	0.107	0.00067	"	0.162	<0.000624	66	30-130	4.5	30	
1-Methylnaphthalene	0.097	0.00201	"	0.162	<0.00109	59.8	30-130	2.7	30	
2-Methylnaphthalene	0.0957	0.00201	"	0.162	<0.00194	59	30-130	3.2	30	
Anthracene	0.121	0.00067	"	0.162	<0.000334	74.6	30-130	7.1	30	
Surrogate: 4-Terphenyl-d14	68.3		"	0.325	211	68.3	33-122			
Surrogate: Nitrobenzene-d5	52.6		"	0.325	166	52.6	29-110			
Surrogate: 2-Fluorobiphenyl	54.7		"	0.325	178	54.7	33-115			

<b>MS (L 86230-MS-L695430)</b>	<b>Source: 86230</b>		<b>Prepared: 07/28/2023 Analyzed: 07/28/2023</b>							
Chrysene	0.112	0.00067	mg/Kg	0.166	<0.000624	67.4	30-130			
Benzo(a)anthracene	0.112	0.00067	"	0.166	<0.000493	67.4	30-130			
Anthracene	0.13	0.00067	"	0.166	<0.000334	78.3	30-130			
Acenaphthene	0.11	0.00067	"	0.166	<0.000304	66.2	30-130			
2-Methylnaphthalene	0.0989	0.00201	"	0.166	<0.00194	59.5	30-130			
1-Methylnaphthalene	0.0997	0.00201	"	0.166	<0.00109	60	30-130			
Benzo(b)fluoranthene	0.105	0.00067	"	0.166	<0.000585	63.2	30-130			
Dibenz(a,h)anthracene	0.15	0.00067	"	0.166	<0.000614	90.3	30-130			

Origins Laboratory, Inc.



*The results in this report apply to the samples analyzed in accordance with the chain of custody document. This analytical report must be reproduced in its entirety.*

Eagle Environmental Consulting, LLC  
 8000 W 44th Ave  
 Wheat Ridge CO 80033

Martin C Eckert III  
 Project Number: -  
 Project: Noble - State 36-614

**PAH by 8270D SIM - Quality Control**  
**Waypoint Analytical, LLC.**

Analyte	Result	Reporting Limit	Units	Spike Level	Source Result	%REC	%REC Limits	RPD	RPD Limit	Notes
---------	--------	-----------------	-------	-------------	---------------	------	-------------	-----	-----------	-------

**Batch L695430 - 3550B**

<b>MS (L 86230-MS-L695430)</b>		<b>Source: 86230</b>			Prepared: 07/28/2023 Analyzed: 07/28/2023					
Fluoranthene	0.121	0.00067	mg/Kg	0.166	<0.000394	72.8	30-130			
Fluorene	0.119	0.00067	"	0.166	<0.000286	71.6	30-130			
Indeno(1,2,3-cd)pyrene	0.118	0.00067	"	0.166	<0.000627	71	30-130			
Pyrene	0.124	0.00067	"	0.166	<0.000643	74.6	30-130			
Benzo(a)pyrene	0.116	0.00067	"	0.166	<0.000468	69.8	30-130			
Benzo(k)fluoranthene	0.111	0.00067	"	0.166	<0.000437	66.8	30-130			
Surrogate: 4-Terphenyl-d14	70.9		"	0.331	211	70.9	33-122			
Surrogate: 2-Fluorobiphenyl	55.2		"	0.331	178	55.2	33-115			
Surrogate: Nitrobenzene-d5	53.4		"	0.331	166	53.4	29-110			

<b>LCS (LCS-L695430)</b>					Prepared: 07/28/2023 Analyzed: 07/28/2023					
1-Methylnaphthalene	0.0955	0.00201	mg/Kg	0.167		57.1	30-130			
Pyrene	0.132	0.00067	"	0.167		79	30-130			
2-Methylnaphthalene	0.0945	0.00201	"	0.167		56.5	30-130			
Acenaphthene	0.105	0.00067	"	0.167		62.8	30-130			
Anthracene	0.129	0.00067	"	0.167		77.2	30-130			
Benzo(a)anthracene	0.117	0.00067	"	0.167		70	30-130			
Benzo(a)pyrene	0.13	0.00067	"	0.167		77.8	30-130			
Benzo(b)fluoranthene	0.11	0.00067	"	0.167		65.8	30-130			
Benzo(k)fluoranthene	0.113	0.00067	"	0.167		67.6	30-130			
Chrysene	0.128	0.00067	"	0.167		76.6	30-130			
Dibenz(a,h)anthracene	0.107	0.00067	"	0.167		64	30-130			
Fluoranthene	0.131	0.00067	"	0.167		78.4	30-130			
Fluorene	0.116	0.00067	"	0.167		69.4	30-130			
Indeno(1,2,3-cd)pyrene	0.0736	0.00067	"	0.167		44	30-130			
Surrogate: 2-Fluorobiphenyl	57.9		"	0.333		57.9	33-115			
Surrogate: 4-Terphenyl-d14	82.8		"	0.333		82.8	33-122			

Origins Laboratory, Inc.



The results in this report apply to the samples analyzed in accordance with the chain of custody document. This analytical report must be reproduced in its entirety.

Eagle Environmental Consulting, LLC  
 8000 W 44th Ave  
 Wheat Ridge CO 80033

Martin C Eckert III  
 Project Number: -  
 Project: Noble - State 36-614

**PAH by 8270D SIM - Quality Control**  
**Waypoint Analytical, LLC.**

Analyte	Result	Reporting Limit	Units	Spike Level	Source Result	%REC	%REC Limits	RPD	RPD Limit	Notes
<b>Batch L695430 - 3550B</b>										
<b>LCS (LCS-L695430)</b>					Prepared: 07/28/2023 Analyzed: 07/28/2023					
Surrogate: Nitrobenzene-d5	54.6		mg/Kg	0.333		54.6	29-110			
<b>LRB (LRB-L695430)</b>					Prepared: 07/28/2023 Analyzed: 07/28/2023					
Indeno(1,2,3-cd)pyrene	ND	0.00067	mg/Kg				-			
Pyrene	ND	0.00067	"				-			
Benzo(a)pyrene	ND	0.00067	"				-			
Benzo(b)fluoranthene	ND	0.00067	"				-			
Benzo(k)fluoranthene	ND	0.00067	"				-			
Chrysene	ND	0.00067	"				-			
Dibenz(a,h)anthracene	ND	0.00067	"				-			
Fluorene	ND	0.00067	"				-			
1-Methylnaphthalene	ND	0.00201	"				-			
Anthracene	ND	0.00067	"				-			
Acenaphthene	ND	0.00067	"				-			
2-Methylnaphthalene	ND	0.00201	"				-			
Benzo(a)anthracene	ND	0.00067	"				-			
Fluoranthene	ND	0.00067	"				-			
Surrogate: Nitrobenzene-d5	58.8		"	0.333		58.8	29-110			
Surrogate: 4-Terphenyl-d14	75.6		"	0.333		75.6	33-122			
Surrogate: 2-Fluorobiphenyl	65.7		"	0.333		65.7	33-115			

Origins Laboratory, Inc.



The results in this report apply to the samples analyzed in accordance with the chain of custody document. This analytical report must be reproduced in its entirety.

Eagle Environmental Consulting, LLC  
 8000 W 44th Ave  
 Wheat Ridge CO 80033

Martin C Eckert III  
 Project Number: -  
 Project: Noble - State 36-614

**Total Metals by 7196A - Quality Control**  
**Waypoint Analytical, LLC.**

Analyte	Result	Reporting Limit	Units	Spike Level	Source Result	%REC	%REC Limits	RPD	RPD Limit	Notes
<b>Batch L695796 -</b>										
<b>DUP (L 86238-DUP)</b>		<b>Source: 86238</b>			Prepared: Analyzed: 07/31/2023					
Chromium, Hexavalent	ND	0.507	mg/Kg		<0.507		-	0	20	
<b>MS (L 86238-MS)</b>		<b>Source: 86238</b>			Prepared: Analyzed: 07/31/2023					
Chromium, Hexavalent	32	2.56	mg/Kg	40.9	<1.25	78	75-125			
<b>LCS (LCS)</b>		Prepared: Analyzed: 07/31/2023								
Chromium, Hexavalent	6.76	0.5	mg/Kg	8		85	75-125			
<b>LRB (LRB)</b>		Prepared: Analyzed: 07/31/2023								
Chromium, Hexavalent	ND	0.5	mg/Kg				-			

Origins Laboratory, Inc.



*The results in this report apply to the samples analyzed in accordance with the chain of custody document. This analytical report must be reproduced in its entirety.*

Eagle Environmental Consulting, LLC  
8000 W 44th Ave  
Wheat Ridge CO 80033

Martin C Eckert III  
Project Number: -  
Project: Noble - State 36-614

---

**Notes and Definitions**

U Sample is Non-Detect.

J Estimated Value. Analyte below reported quantitation limit.

\* QC Failure

ND Analyte NOT DETECTED at or above the reporting limit

RPD Relative Percent Difference

All soil results are reported on a wet weight basis.

Calculated results may use J-flag data (instead of reported "ND") as part of calculation to provide a more accurate result.

Origins Laboratory, Inc.



*The results in this report apply to the samples analyzed in accordance with the chain of custody document. This analytical report must be reproduced in its entirety.*



August 14, 2023

Eagle Environmental Consulting, LLC

Martin C Eckert III

8000 W 44th Ave

Wheat Ridge CO 80033

Project Name - Noble - State #36-614

Project Number - [none]

Attached are your analytical results for Noble - State #36-614 received by Origins Laboratory, Inc. August 03, 2023. This project is associated with Origins project number Y308110-01.

The analytical results in the following report were analyzed under the guidelines of EPA Methods. These methods are identified as follows; "SW" are defined in SW-846, "EPA" are defined in 40CFR part 136 and "SM" are defined in the most current revision of Standard Methods For the Examination of Water and Wastewater.

The analytical results apply specifically to the samples and analyses specified per the attached Chain of Custody. As such, this report shall not be reproduced except in full, without the written approval of Origin's laboratory.

Unless otherwise noted, the analytical results for all soil samples are reported on a wet weight basis. All analytical analyses were performed under NELAP guidelines unless noted by a data qualifier.

Any holding time exceedances, deviations from the method specifications or deviations from Origins Laboratory's Standard Operating Procedures are outlined in the case narrative.

Thank you for selecting Origins for your analytical needs. Please contact us with any questions concerning this report, or if we can help with anything at all.

Origins Laboratory, Inc.  
303.433.1322  
o-squad@oelabinc.com



1725 Elk Place, Denver, CO 80211 | Phone: 303.433.1322 | Fax: 303.265.9645

Eagle Environmental Consulting, LLC  
8000 W 44th Ave  
Wheat Ridge CO 80033

Martin C Eckert III  
Project Number: [none]  
Project: Noble - State #36-614

CROSS REFERENCE REPORT

Sample ID	Laboratory ID	Matrix	Date Sampled	Date Received
Background-02@3'	Y308110-01	Soil	July 24, 2023 14:33	08/03/2023 15:50

Origins Laboratory, Inc.



*The results in this report apply to the samples analyzed in accordance with the chain of custody document. This analytical report must be reproduced in its entirety.*

Eagle Environmental Consulting, LLC  
 8000 W 44th Ave  
 Wheat Ridge CO 80033

Martin C Eckert III  
 Project Number: [none]  
 Project: Noble - State #36-614

www.originslaboratory.com page 1 of 1

**ORIGINS** LABORATORY, INC **4308110**

Client: Eagle Env. Consulting Project Manager: Martin Eckert III  
 Address: 8000 W 44th Ave State: #36-614  
Wheat Ridge, CO 80033  
 Telephone Number: 303-433-0479 Project Number: ---  
 Email Address: MLK3@eagle-enviro.com Samples Collected By: SJEL

Fax: 303.265.9645 | Phone: 303.433.1322 | Denver, CO 80211

Sample ID Description	Date Sampled	Time Sampled	# of Containers	Preservative				Matrix			Analysis	Sample Instructions	
				Unpreserved	HCl	HNO <sub>3</sub>	Other	Groundwater	Soil	Air Summa			Other Center #
Background - 02.05'	7/24/23	1433	2	X				X					1 pH = saturated
													2 part prep
													3
													4
													5
													6
													7
													8
													9
													10

Relinquished By: <u>Ken J...</u>	Date: <u>08/08/23</u>	Time: <u>1550</u>	Received By: <u>UJ</u>	Date: <u>8/12/23</u>	Time: <u>1550</u>	Turnaround Time: <input type="checkbox"/> 24 Hr <input type="checkbox"/> 48 Hr <input checked="" type="checkbox"/> Standard
Relinquished By:	Date:	Time:	Received By:	Date:	Time:	

Temp Received: 4 Date Results Needed: Noble

Relinquished By: Bill to Jeff

Origins Laboratory, Inc.  
*J. Bynon*

The results in this report apply to the samples analyzed in accordance with the chain of custody document. This analytical report must be reproduced in its entirety.

Eagle Environmental Consulting, LLC  
 8000 W 44th Ave  
 Wheat Ridge CO 80033

Martin C Eckert III  
 Project Number: [none]  
 Project: Noble - State #36-614

Origins Laboratory

F-012207-01-R1  
 Effective Date: 01/09/12

Sample Receipt Checklist

Origins Work Order: V308110

Client: Eagle  
 Client Project ID: State 36-614

Checklist Completed by: JG/CHS

Shipped Via: HS  
 (UPS, FedEx, Hand Delivered, Pick-up, etc.)  
 Airbill #: N/A

Date/time completed: 8/1/23

Matrix(s) Received: (Check all that apply):  Soil/Solid  Water  Other: \_\_\_\_\_

Cooler Number/Temperature: 1 / 4.0 °C / \_\_\_\_\_ °C / \_\_\_\_\_ °C (Describe) \_\_\_\_\_ °C

Thermometer ID: T004

Requirement Description	Yes	No	N/A	Comments (if any)
If samples require cooling, was the temperature between 0°C to ≤ 6°C <sup>(1)</sup> ?	/			
Is there ice present (document if blue ice is used)	/			
Are custody seals present on cooler? (if so, document in comments if they are signed and dated, broken or intact)		/		
Are custody seals present on each sample container? (if so, document in comments if they are signed and dated, broken or intact)		/		
Were all samples received intact <sup>(1)</sup> ?	/			
Was adequate sample volume provided <sup>(1)</sup> ?	/			
Are short holding time analytes or samples with HTs due within 48 hours present <sup>(1)</sup> ?		/		
Is a chain-of-custody (COC) present and filled out completely <sup>(1)</sup> ?	/			
Does the COC agree with the number and type of sample bottles received <sup>(1)</sup> ?	/	/		
Do the sample IDs on the bottle labels match the COC <sup>(1)</sup> ?	/	/		
Is the COC properly relinquished by the client with date and time recorded <sup>(1)</sup> ?	/			
For volatiles in water – is there headspace (> ¼ inch bubble) present? If yes, contact client and note in narrative.			/	
Are samples preserved that require preservation and was it checked <sup>(1)</sup> ? (note ID of confirmation instrument used in comments) / (preservation is not confirmed for subcontracted analyses in order to insure sample integrity)/(pH <2 for samples preserved with HNO <sub>3</sub> , HCL, H <sub>2</sub> SO <sub>4</sub> ) / (pH >10 for samples preserved with NaAsO <sub>2</sub> +NaOH, ZnAc+NaOH)			/	
Additional Comments (if any):	<u>Only one jar provided</u>			

<sup>(1)</sup>if NO, then contact the client before proceeding with analysis and note date/time and person contacted as well as the corrective action to in the additional comments (above) and the case narrative.

Reviewed by (Project Manager) [Signature]

8/7/23  
 Date/Time Reviewed

Origins Laboratory, Inc.

[Signature]

The results in this report apply to the samples analyzed in accordance with the chain of custody document. This analytical report must be reproduced in its entirety.

Eagle Environmental Consulting, LLC  
 8000 W 44th Ave  
 Wheat Ridge CO 80033

Martin C Eckert III  
 Project Number: [none]  
 Project: Noble - State #36-614

**Background-02@3'**  
**7/24/2023 2:33:00PM**

Analyte	Result	Reporting Limit	Units	Dilution	Batch	Analyst	Prepared	Analyzed	Notes
---------	--------	-----------------	-------	----------	-------	---------	----------	----------	-------

**Origins Laboratory, Inc.**  
**Y308110-01 (Soil)**

**pH in Soil by 9045D**

pH	7.94		pH Units	1	B3H0507	ACN	08/05/2023	08/06/2023	
----	------	--	----------	---	---------	-----	------------	------------	--

**Table 915 metals by EPA 6020B**

Arsenic	1.42	0.0921	mg/kg	10	B3H0733	CIH	08/07/2023	08/08/2023	
---------	------	--------	-------	----	---------	-----	------------	------------	--

Origins Laboratory, Inc.



*The results in this report apply to the samples analyzed in accordance with the chain of custody document. This analytical report must be reproduced in its entirety.*

Eagle Environmental Consulting, LLC  
 8000 W 44th Ave  
 Wheat Ridge CO 80033

Martin C Eckert III  
 Project Number: [none]  
 Project: Noble - State #36-614

**Metals by EPA 6000/7000 Series Methods - Quality Control**  
**Origins Laboratory, Inc.**

Analyte	Result	Reporting Limit	Units	Spike Level	Source Result	%REC	%REC Limits	RPD	RPD Limit	Notes
---------	--------	-----------------	-------	-------------	---------------	------	-------------	-----	-----------	-------

**Batch B3H0733 - EPA 3050B**

**Blank (B3H0733-BLK1)**

Prepared: 08/07/2023 Analyzed: 08/08/2023

Arsenic	ND	0.000100	mg/kg
Barium	ND	0.0100	"
Cadmium	ND	0.000100	"
Copper	ND	0.0100	"
Lead	ND	0.0100	"
Nickel	ND	0.0100	"
Selenium	ND	0.000100	"
Silver	ND	0.000100	"
Zinc	ND	0.100	"

**LCS (B3H0733-BS1)**

Prepared: 08/07/2023 Analyzed: 08/08/2023

Arsenic	0.0529	0.000100	mg/kg	0.0500	106	80-120
Barium	5.09	0.0100	"	5.00	102	80-120
Cadmium	0.0505	0.000100	"	0.0500	101	80-120
Copper	0.541	0.0100	"	0.500	108	80-120
Lead	0.0497	0.0100	"	0.0500	99.4	80-120
Nickel	0.0538	0.0100	"	0.0500	108	80-120
Selenium	0.0463	0.000100	"	0.0500	92.5	80-120
Silver	0.0502	0.000100	"	0.0500	100	80-120
Zinc	0.516	0.100	"	0.500	103	80-120

**Matrix Spike (B3H0733-MS1)**

**Source: Y308110-01**

Prepared: 08/07/2023 Analyzed: 08/08/2023

Arsenic	6.37	0.0904	mg/kg	4.52	1.42	110	75-125
Barium	513	9.04	"	452	33.4	106	75-125
Cadmium	4.86	0.0904	"	4.52	0.0543	106	75-125
Copper	52.5	9.04	"	45.2	2.56	110	75-125
Lead	8.30	9.04	"	4.52	3.31	111	75-125

Origins Laboratory, Inc.



*The results in this report apply to the samples analyzed in accordance with the chain of custody document. This analytical report must be reproduced in its entirety.*

Eagle Environmental Consulting, LLC  
 8000 W 44th Ave  
 Wheat Ridge CO 80033

Martin C Eckert III  
 Project Number: [none]  
 Project: Noble - State #36-614

**Metals by EPA 6000/7000 Series Methods - Quality Control**  
**Origins Laboratory, Inc.**

Analyte	Result	Reporting Limit	Units	Spike Level	Source Result	%REC	%REC Limits	RPD	RPD Limit	Notes
---------	--------	-----------------	-------	-------------	---------------	------	-------------	-----	-----------	-------

**Batch B3H0733 - EPA 3050B**

**Matrix Spike (B3H0733-MS1)**

**Source: Y308110-01**

Prepared: 08/07/2023 Analyzed: 08/08/2023

Nickel	8.51	9.04	mg/kg	4.52	3.42	113	75-125			
Selenium	4.64	0.0904	"	4.52	0.0589	101	75-125			
Silver	4.74	0.0904	"	4.52	0.0138	105	75-125			
Zinc	60.6	90.4	"	45.2	12.1	107	75-125			

**Matrix Spike Dup (B3H0733-MSD1)**

**Source: Y308110-01**

Prepared: 08/07/2023 Analyzed: 08/08/2023

Arsenic	6.56	0.0937	mg/kg	4.68	1.42	110	75-125	2.85	20	
Barium	523	9.37	"	468	33.4	105	75-125	1.91	20	
Cadmium	5.00	0.0937	"	4.68	0.0543	106	75-125	2.97	20	
Copper	54.4	9.37	"	46.8	2.56	111	75-125	3.53	20	
Lead	8.24	9.37	"	4.68	3.31	105	75-125	0.782	20	
Nickel	8.60	9.37	"	4.68	3.42	110	75-125	0.995	20	
Selenium	4.35	0.0937	"	4.68	0.0589	91.7	75-125	6.41	20	
Silver	5.01	0.0937	"	4.68	0.0138	107	75-125	5.46	20	
Zinc	62.6	93.7	"	46.8	12.1	108	75-125	3.38	20	

Origins Laboratory, Inc.



*The results in this report apply to the samples analyzed in accordance with the chain of custody document. This analytical report must be reproduced in its entirety.*

Eagle Environmental Consulting, LLC  
 8000 W 44th Ave  
 Wheat Ridge CO 80033

Martin C Eckert III  
 Project Number: [none]  
 Project: Noble - State #36-614

**Saturated Paste - Quality Control**  
**Origins Laboratory, Inc.**

Analyte	Result	Reporting Limit	Units	Spike Level	Source Result	%REC	%REC Limits	RPD	RPD Limit	Notes
---------	--------	-----------------	-------	-------------	---------------	------	-------------	-----	-----------	-------

**Batch B3H0507 - Saturated Paste pH/EC**

**Duplicate (B3H0507-DUP1)**

**Source: Y308092-01**

Prepared: 08/05/2023 Analyzed: 08/06/2023

pH	7.31		pH Units		7.57			3.49	25	
----	------	--	----------	--	------	--	--	------	----	--

Origins Laboratory, Inc.



*The results in this report apply to the samples analyzed in accordance with the chain of custody document. This analytical report must be reproduced in its entirety.*

Eagle Environmental Consulting, LLC  
8000 W 44th Ave  
Wheat Ridge CO 80033

Martin C Eckert III  
Project Number: [none]  
Project: Noble - State #36-614

---

### Notes and Definitions

ND Analyte NOT DETECTED at or above the reporting limit

RPD Relative Percent Difference

All soil results are reported at a wet weight basis.

Origins Laboratory, Inc.



*The results in this report apply to the samples analyzed in accordance with the chain of custody document. This analytical report must be reproduced in its entirety.*