

2,000 0 2,000  
SCALE: 1 INCH = 4,000 FEET



WASATCH SURVEYING ASSOCIATES  
906 MAIN STREET, EVANSTON, WY 82930  
(307) 789-4545

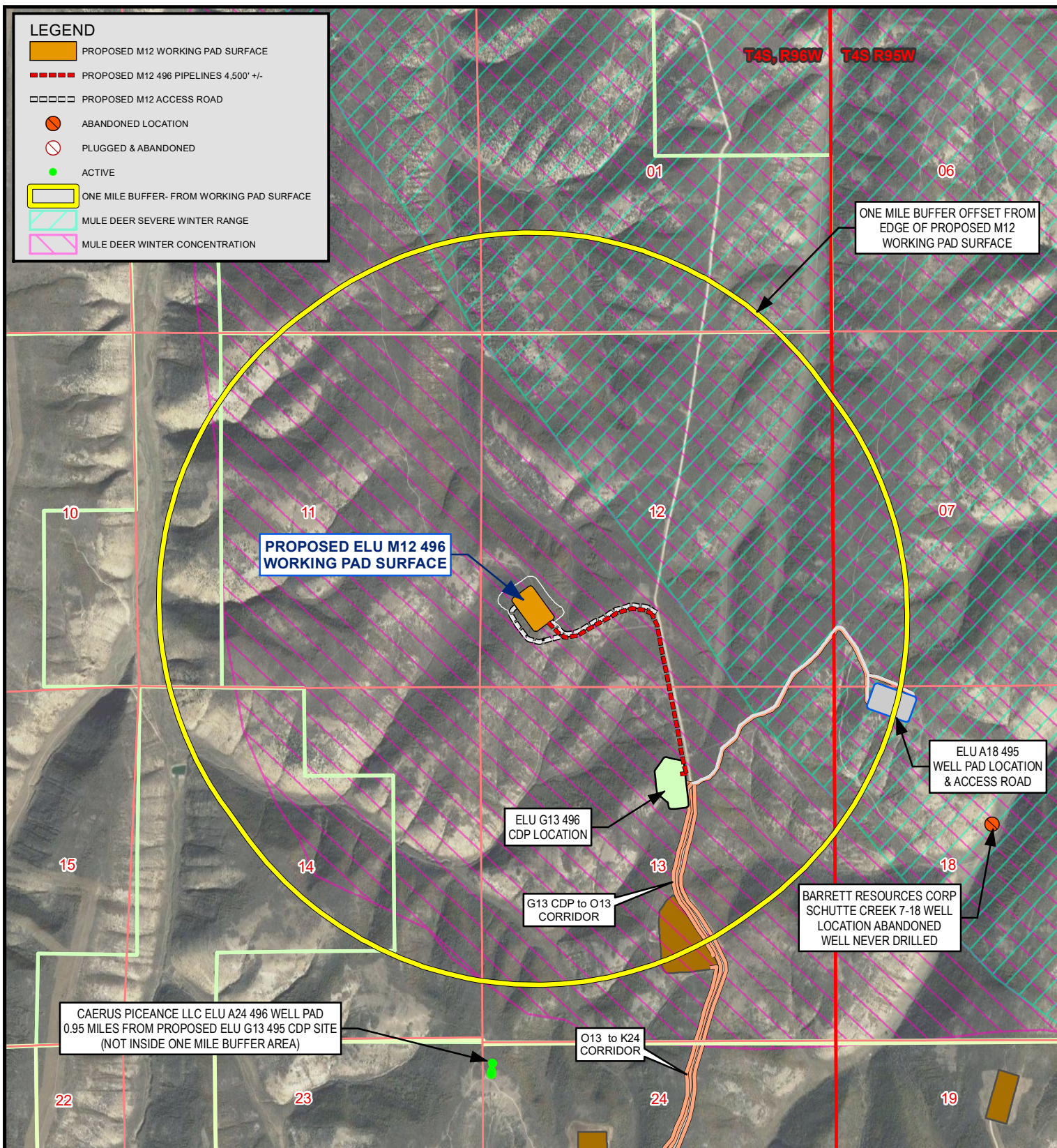
## CAERUS OIL & GAS LLC

ELU M12 496 WELL PAD  
W1/2 SW1/4,  
SECTION 12, T4S, R96W, 6TH P.M.  
RIO BLANCO COUNTY, COLORADO

## WILDLIFE HABITAT MAP

SURVEYED BY: JT/BT	DATE: 5/18/2020	ELK HPH
DRAWN BY: SMM	DATE: 2/11/2024	PROJECT NO: 20-13-03





## CAERUS OIL & GAS LLC

ELU M12 496 WELL PAD  
W1/2 SW1/4,  
SECTION 12, T4S, R96W, 6TH P.M.  
RIO BLANCO COUNTY, COLORADO

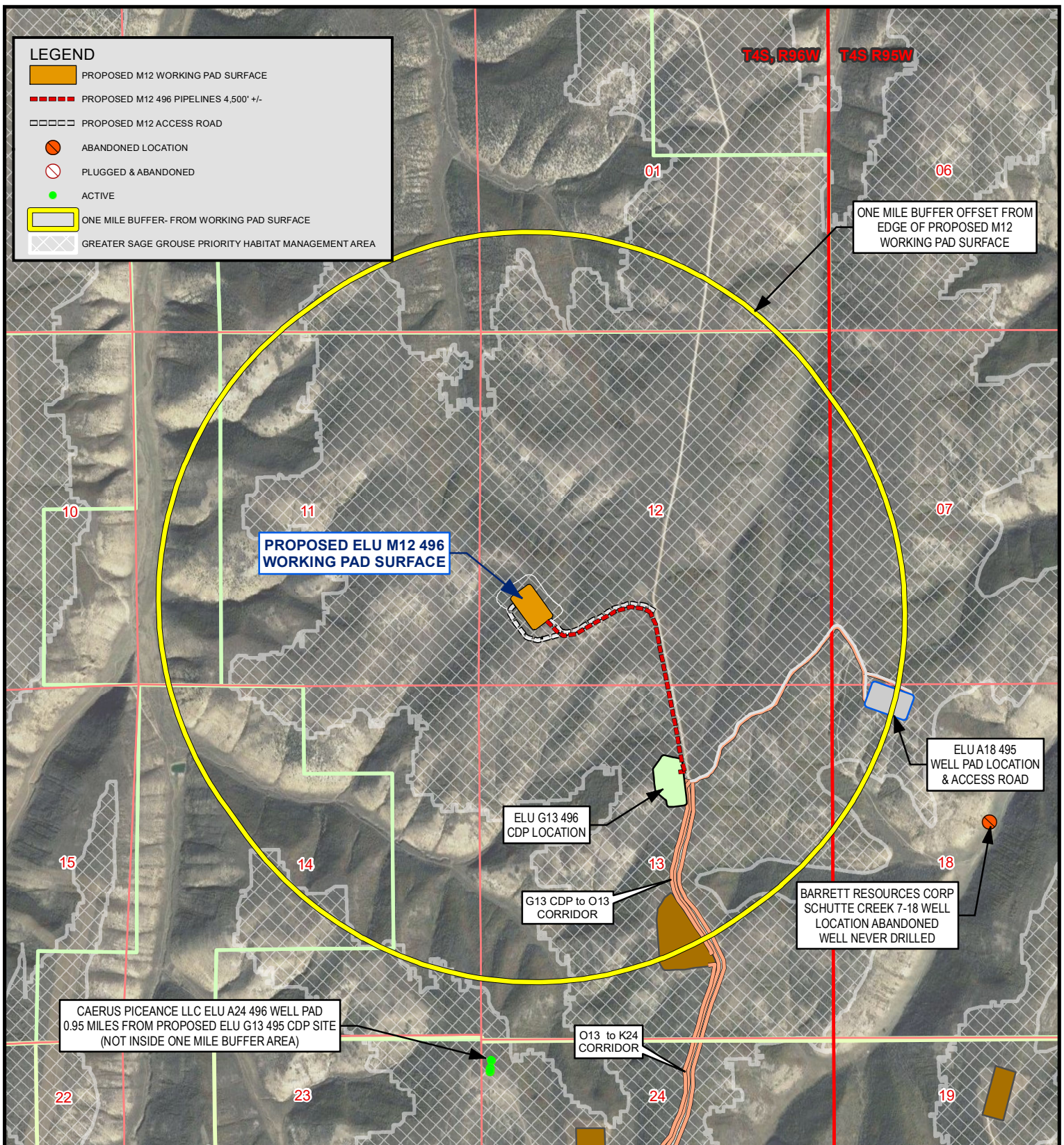
## WILDLIFE HABITAT MAP

SURVEYED BY: JT/BT	DATE: 5/18/2020	<b>MULE DEER HPH</b>
DRAWN BY: SMM	DATE: 2/11/2024	PROJECT NO: 20-13-03



WASATCH SURVEYING ASSOCIATES  
906 MAIN STREET, EVANSTON, WY 82930  
(307) 789-4545





## CAERUS OIL & GAS LLC

ELU M12 496 WELL PAD  
W1/2 SW1/4,  
SECTION 12, T4S, R96W, 6TH P.M.  
RIO BLANCO COUNTY, COLORADO

## WILDLIFE HABITAT MAP

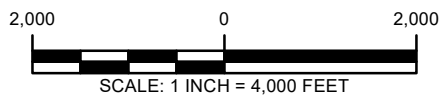
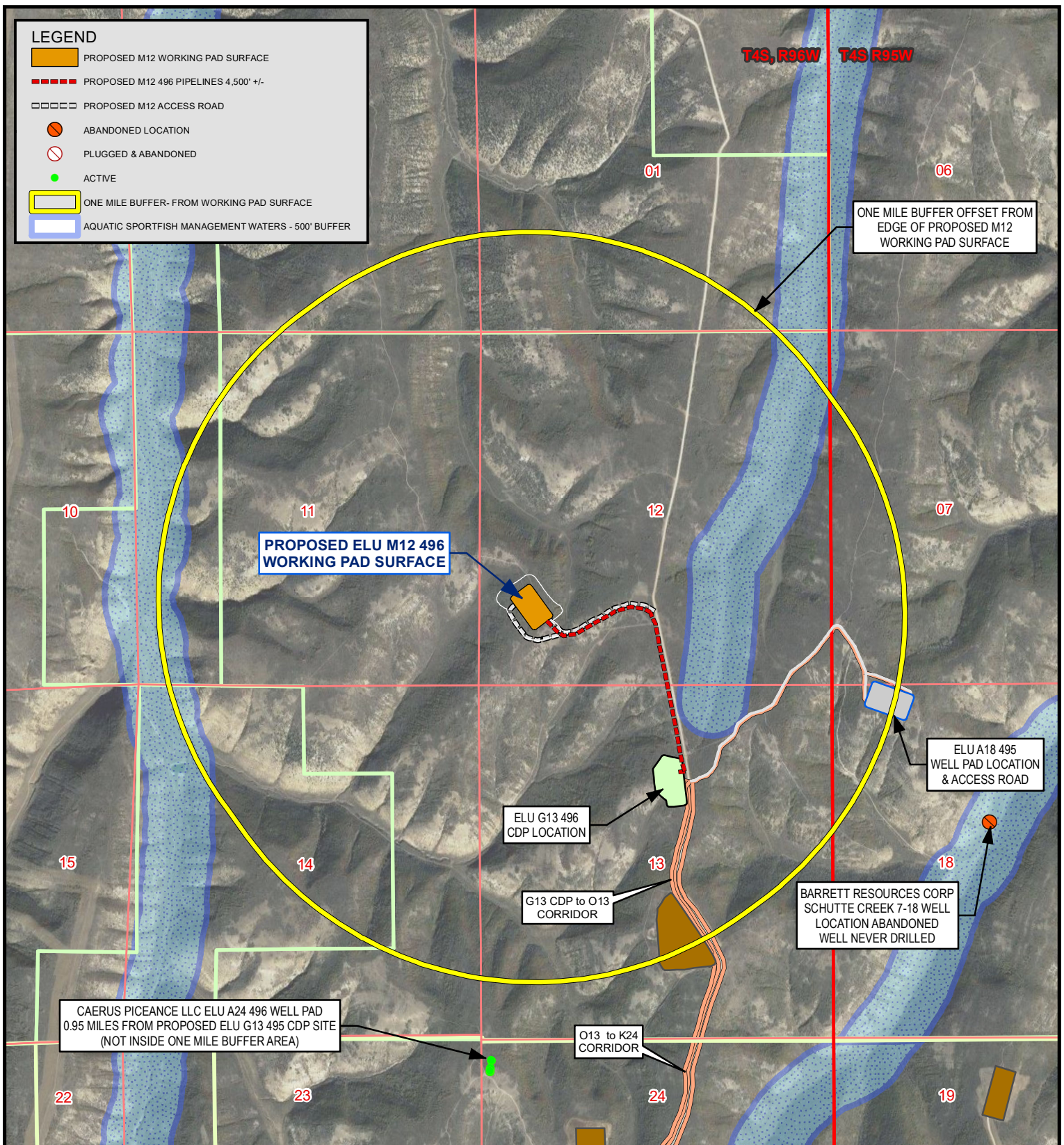
SURVEYED BY: JT/BT	DATE: 5/18/2020	<b>SAGE GROUSE HPH</b>
DRAWN BY: SMM	DATE: 2/11/2024	PROJECT NO: 20-13-03



WASATCH SURVEYING ASSOCIATES  
906 MAIN STREET, EVANSTON, WY 82930  
(307) 789-4545







WASATCH SURVEYING ASSOCIATES  
906 MAIN STREET, EVANSTON, WY 82930  
(307) 789-4545

## CAERUS OIL & GAS LLC

ELU M12 496 WELL PAD  
W1/2 SW1/4,  
SECTION 12, T4S, R96W, 6TH P.M.  
RIO BLANCO COUNTY, COLORADO

## WILDLIFE HABITAT MAP

SURVEYED BY: JT/BT	DATE: 5/18/2020	SPORTFISH HPH
DRAWN BY: SMM	DATE: 2/11/2024	PROJECT NO: 20-13-03