

WASATCH SURVEYING ASSOCIATES
906 MAIN STREET, EVANSTON, WY 82930
(307) 789-4545

CAERUS OIL & GAS LLC

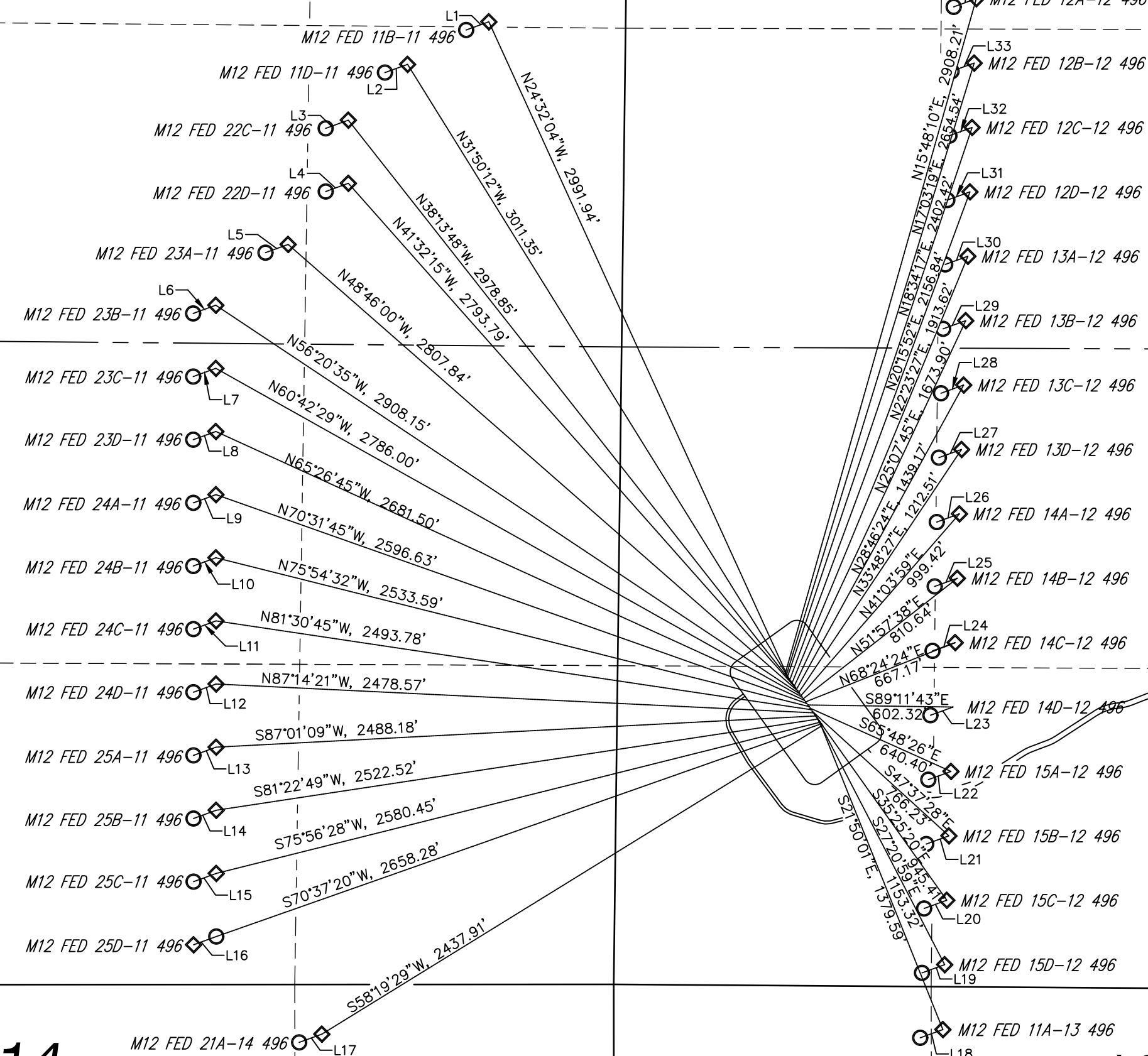
ELU M12 496 WELL PAD
W1/2 SW1/4,
SECTION 12, T4S, R96W, 6TH P.M.
RIO BLANCO COUNTY, COLORADO

MULTI-WELL PLAN

SURVEYED BY: TTT	DATE: 9/18/23	FIGURE #5
DRAWN BY: SMM	DATE: 10/28/23	PROJECT NO: 20-13-03

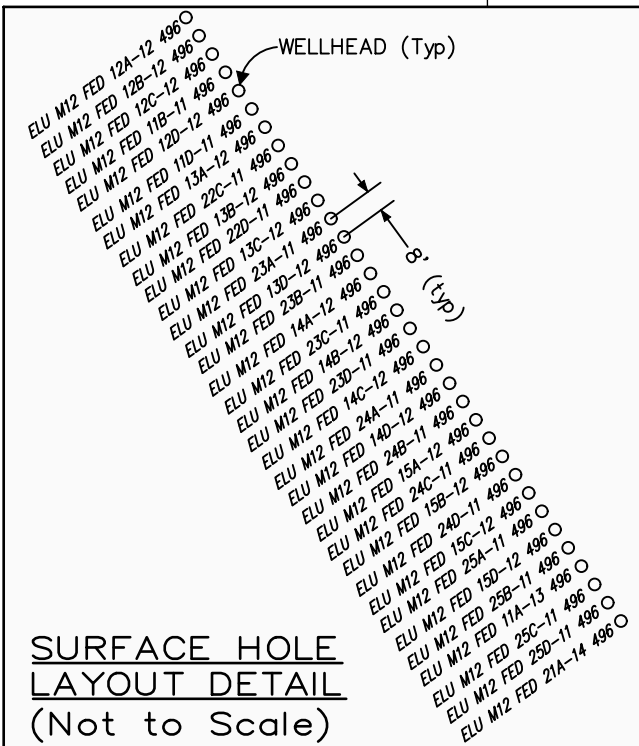
11

12



14

13



Line Table			Line Table		
Line #	Direction	Length	Line #	Direction	Length
L1	S70°02'30"W	100'	L18	S70°02'30"W	100'
L2	S70°02'30"W	100'	L19	S70°02'30"W	100'
L3	S70°02'30"W	100'	L20	S70°02'30"W	100'
L4	S70°02'30"W	100'	L21	S70°02'30"W	100'
L5	S70°02'30"W	100'	L22	S70°02'30"W	100'
L6	S70°02'30"W	100'	L23	S70°02'30"W	100'
L7	S70°02'30"W	100'	L24	S70°02'30"W	100'
L8	S70°02'30"W	100'	L25	S70°02'30"W	100'
L9	S70°02'30"W	100'	L26	S70°02'30"W	100'
L10	S70°02'30"W	100'	L27	S70°02'30"W	100'
L11	S70°02'30"W	100'	L28	S70°02'30"W	100'
L12	S70°02'30"W	100'	L29	S70°02'30"W	100'
L13	S70°02'30"W	100'	L30	S70°02'30"W	100'
L14	S70°02'30"W	100'	L31	S70°02'30"W	100'
L15	S70°02'30"W	100'	L32	S70°02'30"W	100'
L16	S70°02'30"W	100'	L33	S70°02'30"W	100'
L17	S70°02'30"W	100'	L34	S70°02'30"W	100'

CAERUS OIL & GAS LLC

ELU M12 496 WELL PAD

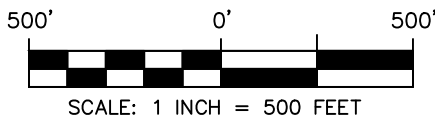
W1/2 SW1/4,

SECTION 12, T4S, R96W, 6TH P.M.

RIO BLANCO COUNTY, COLORADO

TARGET BOTTOM HOLE DRAWING

SURVEYED BY: TTT	DATE: 9/18/23	FIGURE #5A
DRAWN BY: SMM	DATE: 10/28/23	PROJECT NO: 20-13-03



LEGEND

- BOTTOM HOLE LOCATION
- ◇ TOP OF GAS INTERVAL



WASATCH SURVEYING ASSOCIATES
906 MAIN STREET, EVANSTON, WY 82930
(307) 789-4545