

PHOTO TAKEN  
FACING NORTH

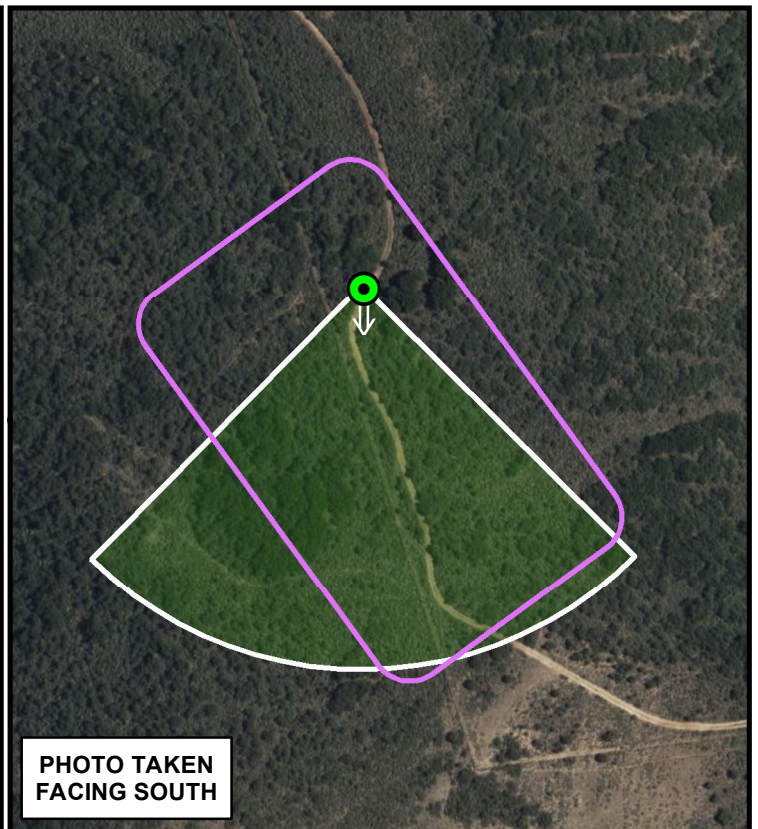


PHOTO TAKEN  
FACING SOUTH

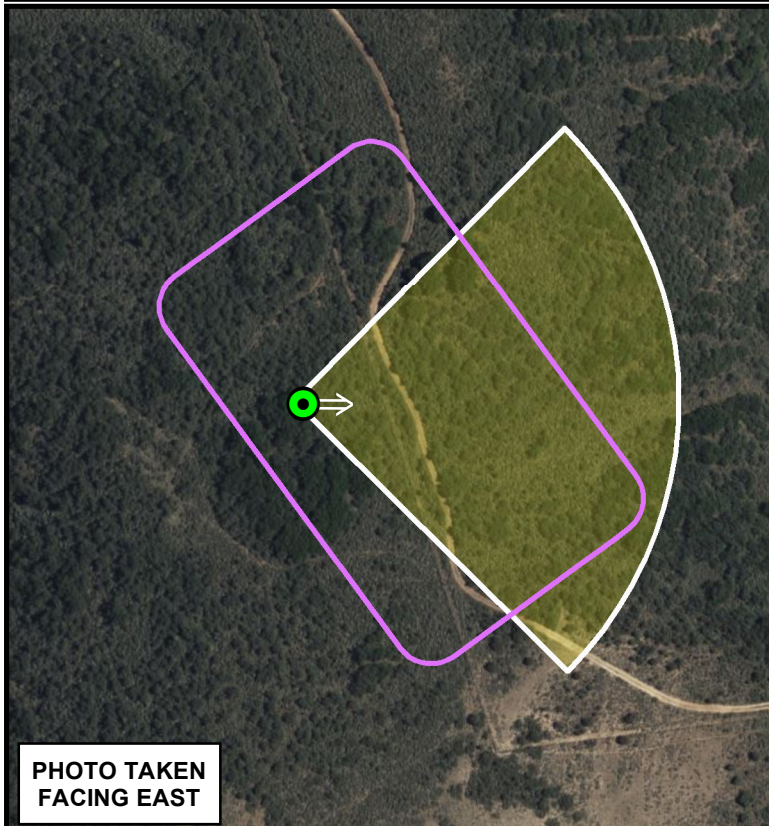


PHOTO TAKEN  
FACING EAST

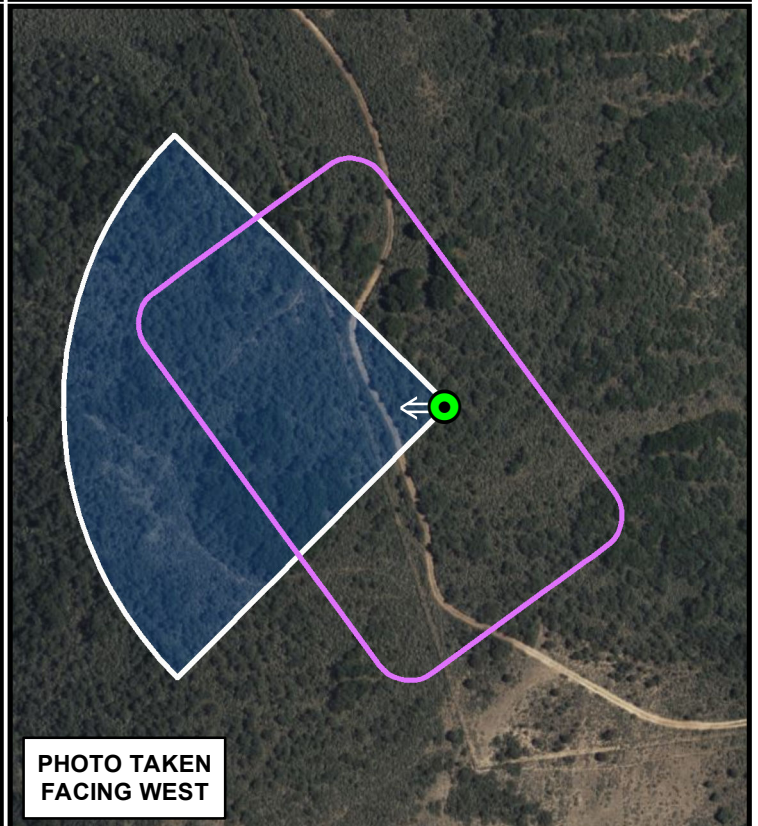
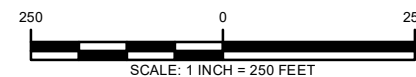


PHOTO TAKEN  
FACING WEST

### Legend

- █ LOOKING EAST
- █ LOOKING NORTH
- █ LOOKING SOUTH
- █ LOOKING WEST



WASATCH SURVEYING ASSOCIATES  
906 MAIN STREET, EVANSTON, WY 82930  
(307) 789-4545



### CAERUS OIL & GAS LLC

ELU M12 496 WELL PAD  
W1/2 SW1/4,  
SECTION 12, T4S, R96W, 6TH P.M.  
RIO BLANCO COUNTY, COLORADO

### PHOTO FIELD OF VIEW MAP

SURVEYED BY: JT/BT	DATE: 5/18/2020	<b>AERIAL MAP</b>
DRAWN BY: SMM	DATE: 10/18/2023	PROJECT NO: 20-13-03





**PHOTO: ELU M12 496 - FACING SOUTH**



**PHOTO: ELU M12 496 - FACING WEST**

## **CAERUS OIL & GAS LLC**

ELU M12 496 WELL PAD  
W1/2 SW1/4, SECTION 12, T4S, R96W, 6TH P.M.  
RIO BLANCO COUNTY, COLORADO

## **LOCATION PHOTOGRAPHS**

DATE TAKEN: 09/18/2023

PROJECT NO: 20-13-03

**PHOTO 2**



**WASATCH SURVEYING ASSOCIATES**  
906 MAIN STREET, EVANSTON, WY 82930  
(307) 789-4545





**PHOTO: ELU M12 496 - FACING NORTH**



**PHOTO: ELU M12 496 - FACING EAST**

## **CAERUS OIL & GAS LLC**

ELU M12 496 WELL PAD  
W1/2 SW1/4, SECTION 12, T4S, R96W, 6TH P.M.  
RIO BLANCO COUNTY, COLORADO

## **LOCATION PHOTOGRAPHS**

DATE TAKEN: 09/18/2023

PROJECT NO: 20-13-03

**PHOTO 1**



**WASATCH SURVEYING ASSOCIATES**  
906 MAIN STREET, EVANSTON, WY 82930  
(307) 789-4545