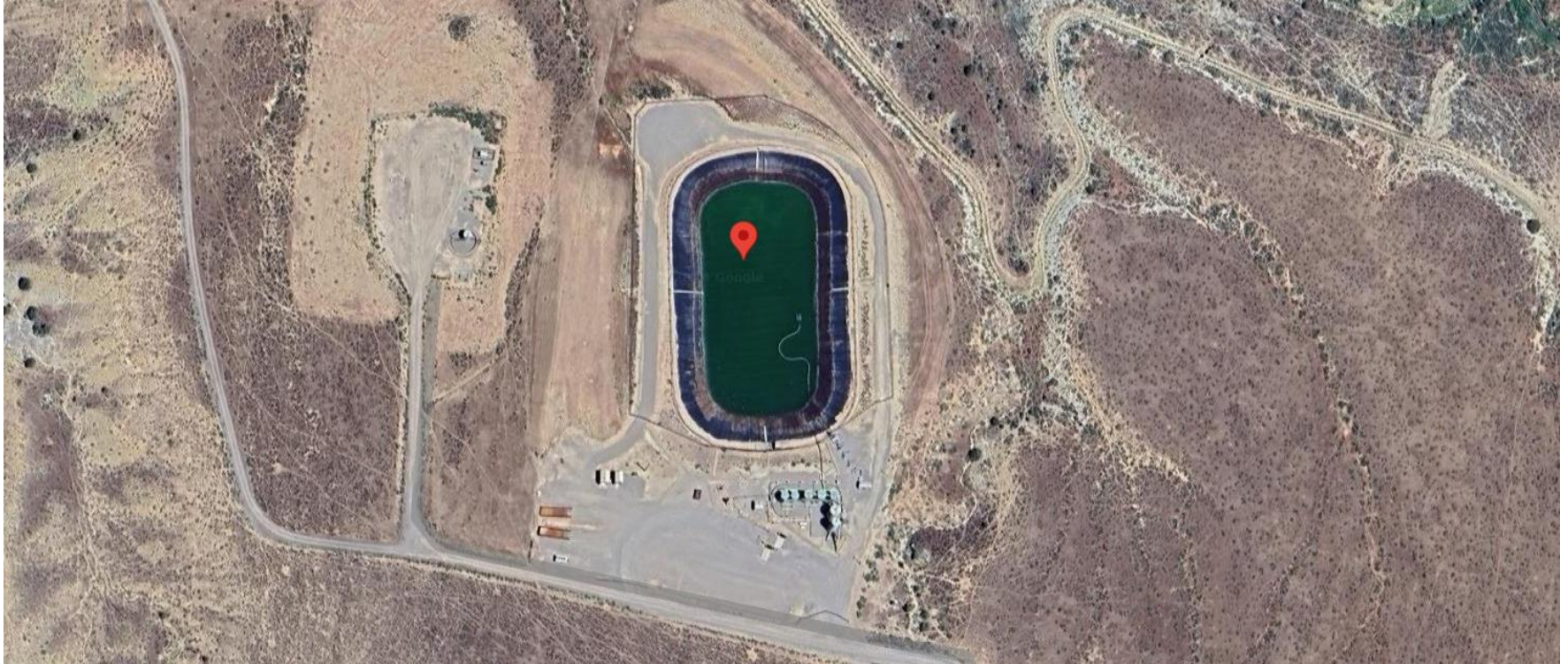


## **Storm Water Management and Erosion control**

**Location Name: TEP ROCKY MOUNTAIN LLC WASATCH BENCH WATER MGMT FACILITY**

**Location ID: 414907**



**Location Overview: Location is within High Priority/Density/Black Bear Habitat areas & in close proximity to NSO Habitat area. Location is within Rule 411a Surface Water Internal & Intermediate Buffers. Location is approximately 222 yards from Mamm Creek.**

**Section/Township/Range: 20 6S92W**



**Storm water Management and Erosion control**  
**Location Name: TEP ROCKY MOUNTAIN LLC WASATCH BENCH WATER MGMT FACILITY**  
**Location ID: 414907**



**North West corner of location.**



**North East corner of location.**



**South West corner of location.**



**South East corner of location.**



## Storm water Management and Erosion control

**Location Name: TEP ROCKY MOUNTAIN LLC WASATCH BENCH WATER MGMT FACILITY**

**Location ID: 414907**



**Photo # 8202 Stockpiled soils with no BMP's**



**Photo # 8203 Stockpiled soils with no BMP's**



## Storm water Management and Erosion control

**Location Name: TEP ROCKY MOUNTAIN LLC WASATCH BENCH WATER MGMT FACILITY**

**Location ID: 414907**



**Photo # 8204 Stockpiled soils with no BMP's (S/SW corner)**



**Photo # 8205 Stockpiled soils with no BMP's (S/SW corner)**



## Storm water Management and Erosion control

**Location Name: TEP ROCKY MOUNTAIN LLC WASATCH BENCH WATER MGMT FACILITY**

**Location ID: 414907**



**Photo # 8206 Lack of stabilization/compaction**



**Photo # 8207 Lack of stabilization/compaction**



## Storm water Management and Erosion control

**Location Name: TEP ROCKY MOUNTAIN LLC WASATCH BENCH WATER MGMT FACILITY**

**Location ID: 414907**



**Photo # 8208 Lack of stabilization/compaction**



**Photo # 8209 Lack of stabilization/compaction**



## Storm water Management and Erosion control

**Location Name: TEP ROCKY MOUNTAIN LLC WASATCH BENCH WATER MGMT FACILITY**

**Location ID: 414907**



**Photo # 8210 Erosion & transport of sediment (East side of location)**



**Photo # 8211 Erosion & transport of sediment into a vegetated area (East side of location)**



## Storm water Management and Erosion control

**Location Name: TEP ROCKY MOUNTAIN LLC WASATCH BENCH WATER MGMT FACILITY**

**Location ID: 414907**



**Photo # 8212 Erosion & transport of sediment into a vegetated area (East side of location)**



**Photo # 8213 Erosion & transport of sediment into a vegetated area (E/SE area of location)**



## Storm water Management and Erosion control

**Location Name: TEP ROCKY MOUNTAIN LLC WASATCH BENCH WATER MGMT FACILITY**

**Location ID: 414907**



**Photo # 8214 Erosion & transport of sediment into a vegetated area (E/SE area of location)**