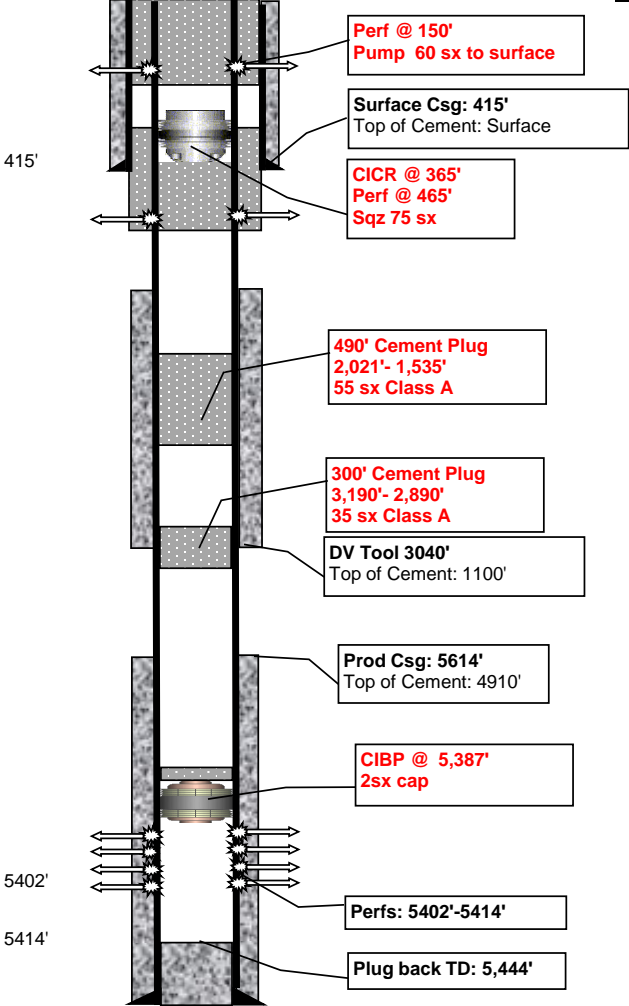


Dolfi 1-35

Proposed P&A

Today - 5/23/2024

API #	Lease ID	Permit #	County	KB	GL	Current production		Sec N/S	Sec E/W	Sec
05-017-07507		95-996	Cheyenne	4356'	4344'			880' S	960'W	35-15S-45W
Pumping Unit		Motor	State	TD	PBTD	Initial production		Lease N/S	Lease E/W	Blk
KB = 12'		JEN 160	CO	5610'	5444'	43 BOPD	TSTM 0 BWPD			



Perforations

Top	Bottom	SPF	Stimulation	OPEN?
5402'	5414'		750gal, MCA 15% acid	YES

Casing

Depth	Size	Wgt (#)	Grade	Description
415'	8-5/8"	24		
5614'	5-1/2"	15.5		DV tool 3040'

Cement

Casing	Sacks	TOC	Description
8-5/8"	250	Surface	150 sx lite, 100 sx H
5-1/2"	275	2800; 4910	lower: 75 sx; upper: 200 sx lite (CBL 1996)

Aquifers

Description	Top	Bot
Cheyenne Sandstone	1611'	1846'
Dakota Sandstone	1921'	1971'

28'

5444' PBTD

5610' TD