

Wellhead Closure Checklist

COGCC Rule 911.a.(4) Environmental Site Closure Assessment Field Form

Additional attachments (optional):		Pit Closure <u> </u>		Tank Battery Closure <u> </u>		Flowline Closure <u> </u>		Partially Buried Vault Closure <u> </u>	
Site Name & COGCC Facility Number: Shelton R G #26-8		Date: 06/30/23					Remediation Project #: 29038		
Associated Wells: 05-123-12791		Age of Site: Years					Number of Photos Attached: 2		
Location: (GPS coordinates of wellhead or southeastern most wellhead for multiple)						40.285020 / -104.623510			
General Condition of Site: (General observations regarding housekeeping, corrosion, waste management, etc.)									
Good Condition									
USCS Soil Type: Clayey SILT					Estimated Depth to Groundwater: Approx. 6'				
Hydrocarbon Impacted Soils / Spills: (Note estimated size and if impact appears to be surficial or extends to an unknown depth)									
None observed.									
Salt Crusted Soils or Impacted Vegetation: (Note estimated size and if impact appears to be surficial or extends to an unknown depth)									
None observed.									
Wellhead(s)									
Well API	05-123-12791								
Age	Years								
Condition of surface around wellhead	Good Condition								
PID Readings	WH-N: 8.9	WH-E: 9.1	WH-S: 6.9	WH-W: 8.0					
Condition of subsurface (staining present)	Good - No Odor/Staining								
PID Readings	57.8	23.8	9.1	151.5					
Sample taken? Location/Sample ID#	WH-SS-01	WH-SS-02	WH-SS-03	WH-SS-04					
Photo Number(s)	See photolog								
Other observations regarding wellheads:									
Well casing cut/capped prior to assessment.									
Summary									
Was impacted soil identified?									
No		Yes - less than 10 cubic yards			Yes - more than 10 cubic yards				
Total number of samples field screened: 4					Total number of samples collected: 4				
Highest PID Reading: 151.5					Total number of samples submitted to lab for analysis: 4				
If more than 10 cubic yards of impacted soil were observed:									
Vertical extent:					Estimated spill volume:				
N/A									
Lateral extent:					Volume of soil removed:				
Is additional investigation required?									
Was groundwater encountered during the investigation?									
No		Yes - not impacted or in contact with impacted soils			Yes - groundwater impacted and/or in contact with impacted soils				
Measured depth to groundwater: Approx. 6'					Was remedial groundwater removal conducted? Yes No				
Date Groundwater was encountered: 06/30/23					Commencement date of removal:				
Sheen on groundwater? Yes No					Volume of groundwater removed prior to sampling:				
Free product observed? Yes No					Volume of groundwater removed post sampling: N/A				
Total number of samples collected: 1					Total Volume of groundwater removed:				
Total number of samples submitted to lab for analysis: 1									



FIGURES

Figure 1: Topographic Site Location Map

Figure 2: Aerial Site Location Map

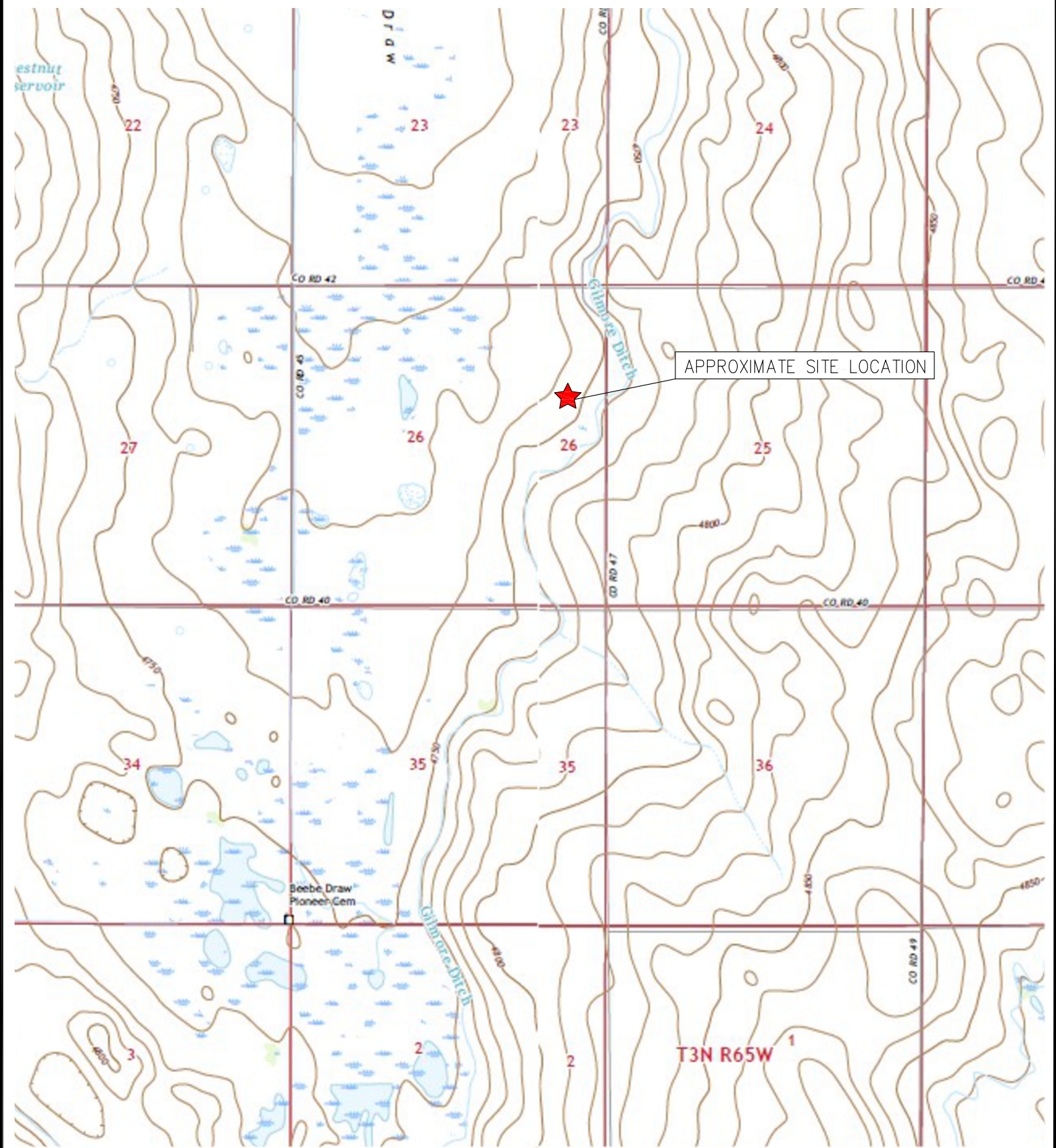
Figure 3: Soil Sample Location Map

Figure 4: Soil Analytical Map

Figure 5: Polycyclic Aromatic Hydrocarbons Map

Figure 6: Grab Groundwater Analytical Map

Figure 7: Metals in Soil Map



APPROXIMATE SITE LOCATION



TOPOGRAPHIC SITE LOCATION MAP
 SHELTON R G #26-8
 CLOSURE ASSESSMENT
 40.285020 / -104.623510
 SE¼ NE¼ SEC.26 T4N R65W 6PM
 WELD COUNTY, COLORADO
 API # 05-123-12791
 REMEDIATION # 29038



EAGLE
 ENVIRONMENTAL
 CONSULTING, LLC




8000 W 44th Ave, Wheat Ridge, CO 80033
 Ph: 303-433-0479 • F: 303-325-5449

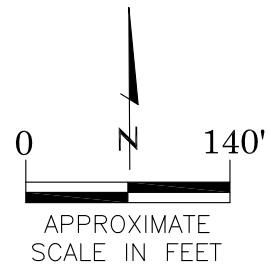
SOURCE: USGS 7.5 MINUTE TOPOGRAPHIC MAP,
 VALLEY VIEW SCHOOL AND LA SALLE, CO
 QUADRANGLES 2022

FIGURE NO. 1



LEGEND

-  FORMER SHELTON R G #26-8 WELLHEAD (PLUGGED AND ABANDONED)
-  ASSOCIATED SEPARATOR
-  APPROXIMATE FLOWLINE LOCATION



AERIAL SITE LOCATION MAP
SHELTON R G #26-8
CLOSURE ASSESSMENT
40.285020 / -104.623510
SE¼ NE¼ SEC.26 T4N R65W 6PM
WELD COUNTY, COLORADO
API # 05-123-12791
REMEDATION # 29038

FIGURE NO.

2

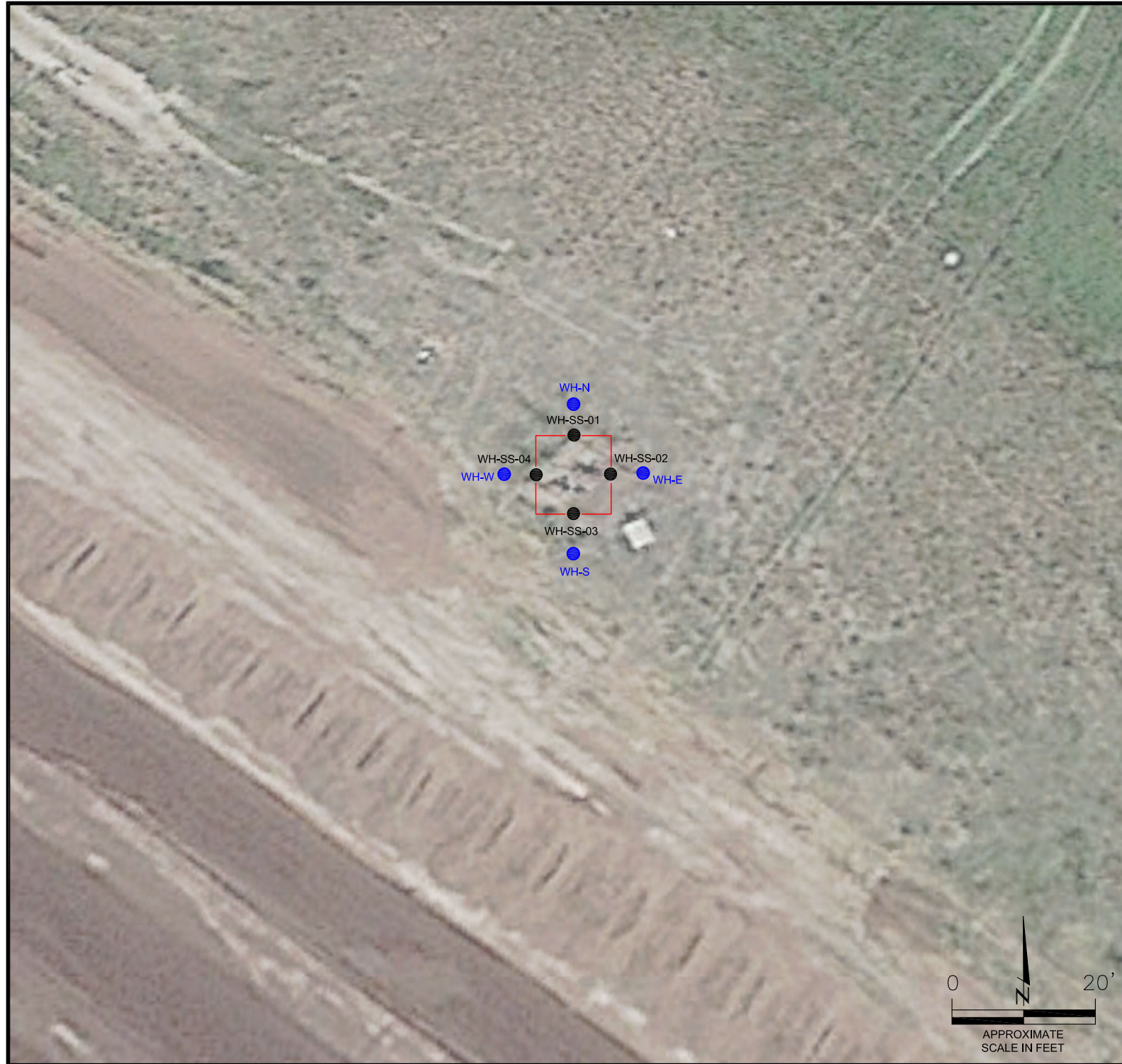
DRAWN BY:

JF



EAGLE
ENVIRONMENTAL
CONSULTING, LLC

8000 W 44th Ave, Wheat Ridge, CO 80033
Ph: 303-433-0479 • F: 303-325-5449



LEGEND

- — WELLHEAD ASSESSMENT BOUNDARIES
- SS-02 APPROXIMATE LOCATION OF SOIL SAMPLES SUBMITTED FOR LABORATORY ANALYSIS
- SS-02 APPROXIMATE LOCATION OF SOIL SAMPLES FIELD SCREENED, ONLY, WITH PHOTOIONIZATION DETECTOR

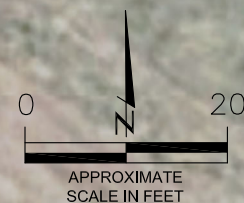
SOIL SAMPLE LOCATION MAP
 SHELTON R G #26-8
 CLOSURE ASSESSMENT
 40.285020 / -104.623510
 SE¼ NE¼ SEC.26 T4N R65W 6PM
 WELD COUNTY, COLORADO
 API # 05-123-12791
 REMEDIATION # 29038

FIGURE NO.
3

DRAWN BY:
JF



EAGLE
 ENVIRONMENTAL
 CONSULTING, LLC
 8000 W 44th Ave, Wheat Ridge, CO 80033
 Ph: 303-433-0479 • F: 303-325-5449



LEGEND

- WELLHEAD ASSESSMENT BOUNDARIES
- APPROXIMATE LOCATION OF SOIL SAMPLES SUBMITTED FOR LABORATORY ANALYSIS

PARAMETERS

SAMPLE LOCATION	
DATE	
DEPTH (FEET)	
B	= BENZENE (mg/kg)
T	= TOLUENE (mg/kg)
E	= ETHYLBENZENE (mg/kg)
X	= TOTAL XYLENES (mg/kg)
N	= NAPHTHALENE (mg/kg)
G	= TPH-GRO (mg/kg)
D	= TPH-DRO (mg/kg)
R	= TPH-RRO (mg/kg)
1,2,4-TMB	= 1,2,4 TRIMETHYLBENZENE (mg/kg)
1,3,5-TMB	= 1,3,5 TRIMETHYLBENZENE (mg/kg)
Brn	= BORON (mg/L)
EC	= SPECIFIC CONDUCTANCE (mmhos/cm)
SAR	= SODIUM ADSORPTION RATIO
pH	= pH (pH UNITS)

mg/kg = MILLIGRAMS PER KILOGRAM
 mg/L = MILLIGRAMS PER LITER
 mmhos/cm = MILLIMHOS PER CENTIMETER

TPH-GRO = TOTAL PETROLEUM HYDROCARBONS - GASOLINE RANGE ORGANICS
 TPH-DRO = TOTAL PETROLEUM HYDROCARBONS - DIESEL RANGE ORGANICS
 TPH-RRO = TOTAL PETROLEUM HYDROCARBONS - RESIDUAL RANGE ORGANICS

NOTES:
 LABORATORY RERUNS WERE COMPLETED AS APPLICABLE ON SAMPLES WITH SOIL SUITABILITY VALUES OUTSIDE OF ECMC TABLE 915-1 REGULATORY RANGE. RESULTS OF THE RERUNS ARE PRESENTED IN PARENTHESES.

VALUES PRESENTED WITH A LESS THAN SYMBOL (<) DID NOT CONTAIN CONCENTRATIONS AT OR ABOVE LABORATORY DETECTION LIMITS.

VALUES PRESENTED IN **BOLD** EXCEED ECMC TABLE 915-1 REGULATORY LIMITS.

ECMC = ENERGY & CARBON MANAGEMENT COMMISSION

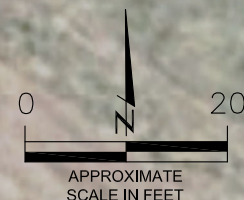
SOIL ANALYTICAL MAP
 SHELTON R G #26-8
 CLOSURE ASSESSMENT
 40.285020 / -104.623510
 SE¼ NE¼ SEC.26 T4N R65W 6PM
 WELD COUNTY, COLORADO
 API # 05-123-12791
 REMEDIATION # 29038

FIGURE NO.
4

DRAWN BY:
JF



EAGLE
 ENVIRONMENTAL
 CONSULTING, LLC
 8000 W 44th Ave, Wheat Ridge, CO 80033
 Ph: 303-433-0479 • F: 303-325-5449



WH-SS-04@5'
 06/30/23
 5'
 B = <0.00200
 T = <0.00200
 E = <0.00200
 X = <0.00200
 N = <0.00380
 G = <0.200
 D = <25.0
 R = <100
 1,2,4-TMB = <0.00200
 1,3,5-TMB = 0.00238
 Brn= 0.649
 EC = 0.972
 SAR= **9.78**
 pH = **8.51** (8.30/8.30)

BACKGROUND-01@2'
 06/30/23
 2'
 SAR= **9.98**
 pH = **8.52**

WH-SS-01@5'
 06/30/23
 5'
 B = <0.00200
 T = <0.00200
 E = <0.00200
 X = <0.00200
 N = <0.00380
 G = 1.33
 D = 32.7
 R = <100
 1,2,4-TMB = <0.00200
 1,3,5-TMB = 0.00660
 Brn= 1.66
 EC = 1.29
 SAR= 5.47
 pH = 8.29



WH-SS-03@5'
 06/30/23
 5'
 B = <0.00200
 T = <0.00200
 E = <0.00200
 X = <0.00200
 N = <0.00380
 G = <0.200
 D = <25.0
 R = <100
 1,2,4-TMB = <0.00200
 1,3,5-TMB = <0.00200
 Brn= 1.09
 EC = 0.689
 SAR= 1.90
 pH = 8.21

WH-SS-02@5'
 06/30/23
 5'
 B = <0.00200
 T = <0.00200
 E = <0.00200
 X = <0.00200
 N = <0.00380
 G = <0.200
 D = 99.1
 R = 275
 1,2,4-TMB = <0.00200
 1,3,5-TMB = <0.00200
 Brn= 1.99
 EC = 1.06
 SAR= 4.81
 pH = **8.46** (8.15/8.18)

LEGEND

- WELLHEAD ASSESSMENT BOUNDARIES
- APPROXIMATE LOCATION OF SOIL SAMPLES SUBMITTED FOR LABORATORY ANALYSIS

PARAMETERS

SAMPLE LOCATION
DATE SAMPLE COLLECTED
APPROXIMATE DEPTH

POLYCYCLIC AROMATIC HYDROCARBONS (PAHs) (mg/kg)

mg/kg = MILLIGRAMS PER KILOGRAM

NOTES:

VALUES PRESENTED WITH A LESS THAN SYMBOL (<) DID NOT CONTAIN CONCENTRATIONS AT OR ABOVE LABORATORY DETECTION LIMITS.

VALUES PRESENTED IN **BOLD** EXCEED ECMC TABLE 915-1 REGULATORY LIMITS.

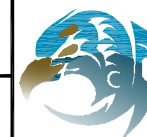
ECMC = ENERGY & CARBON MANAGEMENT COMMISSION

POLYCYCLIC AROMATIC HYDROCARBONS MAP

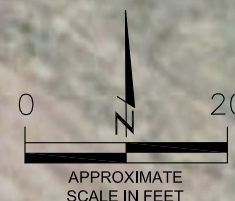
SHELTON R G #26-8
CLOSURE ASSESSMENT
40.285020 / -104.623510
SE¼ NE¼ SEC.26 T4N R65W 6PM
WELD COUNTY, COLORADO
API # 05-123-12791
REMEDIAION # 29038

FIGURE NO.
5

DRAWN BY:
JF



EAGLE
ENVIRONMENTAL
CONSULTING, LLC
8000 W 44th Ave, Wheat Ridge, CO 80033
Ph: 303-433-0479 • F: 303-325-5449



WH-SS-04@5'
06/30/23
5'

1-Methylnaphthalene = <0.00201
2-Methylnaphthalene = <0.00201
Acenaphthene = <0.00067
Anthracene = <0.00067
Benzo(a)anthracene = <0.00067
Benzo(a)pyrene = <0.00067
Benzo(b)fluoranthene = <0.00067
Benzo(k)fluoranthene = <0.00067
Chrysene = <0.00067
Dibenzo(a,h)anthracene = <0.00067
Fluoranthene = <0.00067
Fluorene = <0.00067
Indeno(1,2,3-CD)pyrene = <0.00067
Pyrene = <0.00067

WH-SS-01@5'
06/30/23
5'

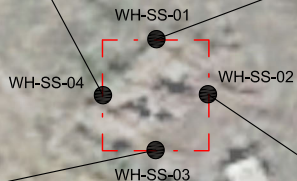
1-Methylnaphthalene = 0.00383
2-Methylnaphthalene = 0.00634
Acenaphthene = 0.000693
Anthracene = <0.00067
Benzo(a)anthracene = <0.00067
Benzo(a)pyrene = <0.00067
Benzo(b)fluoranthene = <0.00067
Benzo(k)fluoranthene = <0.00067
Chrysene = 0.00122
Dibenzo(a,h)anthracene = <0.00067
Fluoranthene = <0.00067
Fluorene = 0.00126
Indeno(1,2,3-CD)pyrene = <0.00067
Pyrene = <0.00067

WH-SS-03@5'
06/30/23
5'

1-Methylnaphthalene = <0.00201
2-Methylnaphthalene = <0.00201
Acenaphthene = <0.00067
Anthracene = <0.00067
Benzo(a)anthracene = <0.00067
Benzo(a)pyrene = <0.00067
Benzo(b)fluoranthene = <0.00067
Benzo(k)fluoranthene = <0.00067
Chrysene = <0.00067
Dibenzo(a,h)anthracene = <0.00067
Fluoranthene = <0.00067
Fluorene = <0.00067
Indeno(1,2,3-CD)pyrene = <0.00067
Pyrene = <0.00067

WH-SS-02@5'
06/30/23
5'

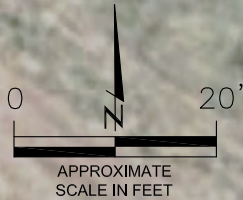
1-Methylnaphthalene = 0.00121
2-Methylnaphthalene = 0.00195
Acenaphthene = <0.00067
Anthracene = <0.00067
Benzo(a)anthracene = <0.00067
Benzo(a)pyrene = <0.00067
Benzo(b)fluoranthene = 0.000842
Benzo(k)fluoranthene = <0.00067
Chrysene = 0.000853
Dibenzo(a,h)anthracene = 0.000798
Fluoranthene = <0.00067
Fluorene = <0.00067
Indeno(1,2,3-CD)pyrene = 0.000733
Pyrene = <0.00067





GW-01

GW-01
 06/30/23
 B = **21.9**
 T = 102
 E = 23.1
 X = 316
 N = <2.00
 1,2,4-TMB = 36.3
 1,3,5-TMB = 22.8



LEGEND

--- WELLHEAD ASSESSMENT BOUNDARIES

● APPROXIMATE LOCATION OF GRAB GROUNDWATER SAMPLE SUBMITTED FOR LABORATORY ANALYSIS

PARAMETERS

GROUNDWATER SAMPLE LOCATION
 DATE
 B = BENZENE (µg/L)
 T = TOLUENE (µg/L)
 E = ETHYLBENZENE (µg/L)
 X = TOTAL XYLENES (µg/L)
 N = NAPHTHALENE (µg/L)
 1,2,4-TMB = 1,2,4-TRIMETHYLBENZENE (µg/L)
 1,3,5-TMB = 1,3,5-TRIMETHYLBENZENE (µg/L)

µg/L = MICROGRAMS PER LITER

NOTES:
 VALUES PRESENTED WITH A LESS THAN SYMBOL (<) DID NOT CONTAIN CONCENTRATIONS AT OR ABOVE THE LABORATORY REPORTING LIMIT.

VALUES PRESENTED IN **BOLD** EXCEED THE ECMC TABLE 915-1 REGULATORY LIMITS FOR THAT COMPOUND.

ECMC = ENERGY & CARBON MANAGEMENT COMMISSION

GRAB GROUNDWATER ANALYTICAL MAP
 SHELTON R G #26-8
 CLOSURE ASSESSMENT
 40.285020 / -104.623510
 SE¼ NE¼ SEC.26 T4N R65W 6PM
 WELD COUNTY, COLORADO
 API # 05-123-12791
 REMEDIATION # 29038

FIGURE NO.
6

DRAWN BY:
JF

EAGLE
 ENVIRONMENTAL
 CONSULTING, LLC
 8000 W 44th Ave, Wheat Ridge, CO 80033
 Ph: 303-433-0479 • F: 303-325-5449



BACKGROUND-01@2'
06/30/22
2'

Arsenic = 2.28***
Barium = 45.6
Cadmium = <0.0931
Copper = <9.31
Lead = <9.31
Nickel = <9.31
Selenium = 0.135
Silver = <0.0931
Zinc = <93.1

BACKGROUND-01

(NS)
WH-SS-01

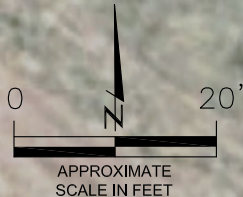
WH-SS-04 (NS)

WH-SS-02

WH-SS-03 (NS)

WH-SS-02@5'
06/30/23
5'

Arsenic = 2.04***
Barium = 58.1
Cadmium = 0.237
Chromium (VI) = <0.252**
Copper = 21.8
Lead = **52.8***
Nickel = <8.61
Selenium = 0.170
Silver = <0.0861
Zinc = <86.1



LEGEND

- WELLHEAD ASSESSMENT BOUNDARIES
- APPROXIMATE LOCATION OF SOIL SAMPLES SUBMITTED FOR LABORATORY ANALYSIS

PARAMETERS

SAMPLE LOCATION
DATE SAMPLE COLLECTED
APPROXIMATE DEPTH
Arsenic = (mg/kg)
Barium = (mg/kg)
Cadmium = (mg/kg)
Chromium (VI) = (mg/kg)
Copper = (mg/kg)
Lead = (mg/kg)
Nickel = (mg/kg)
Selenium = (mg/kg)
Silver = (mg/kg)
Zinc = (mg/kg)

mg/kg = MILLIGRAMS PER KILOGRAM

(NS) – NOT SAMPLED

NOTES:
VALUES PRESENTED WITH A LESS THAN SYMBOL (<) DID NOT CONTAIN CONCENTRATIONS AT/OR ABOVE LABORATORY REPORTING LIMITS AND/OR MINIMUM DETECTION LIMITS.

VALUES PRESENTED IN **BOLD** EXCEED ECMC TABLE 915-1 REGULATORY LIMITS.

*VALUES EXCEED ECMC TABLE 915-1 PROTECTION OF GROUNDWATER SOIL SCREENING LEVELS, ONLY.

**ACHIEVABLE PRACTICAL QUANTITATIVE LIMITS FOR HEXAVALENT CHROMIUM (Cr VI) IN SOILS IS IN THE RANGE OF 0.1 TO 1 mg/kg.

***ARSENIC IS NATURALLY OCCURRING IN COLORADO. LOCAL CLEAN-UP LEVEL (2.85 mg/kg) is 1.25*BACKGROUND (2.28 mg/kg).

ECMC = ENERGY & CARBON MANAGEMENT COMMISSION

METALS IN SOIL MAP
SHELTON R G #26-8
CLOSURE ASSESSMENT
40.285020 / -104.623510
SE¼ NE¼ SEC.26 T4N R65W 6PM
WELD COUNTY, COLORADO
API # 05-123-12791
REMEDATION # 29038

FIGURE NO.
7

DRAWN BY:
JF



EAGLE
ENVIRONMENTAL
CONSULTING, LLC
8000 W 44th Ave, Wheat Ridge, CO 80033
Ph: 303-433-0479 • F: 303-325-5449



TABLES

Table 1: Photoionization Detector Reading Summary

Table 2: Soil Analytical Results Summary

Table 3: Groundwater Analytical Results Summary

TABLE 1
PHOTOIONIZATION DETECTOR READING SUMMARY
SHELTON R G #26-8
CLOSURE ASSESSMENT
40.285020 / -104.623510
SE¼ NE¼ SEC.26 T4N R65W 6PM
WELD COUNTY, COLORADO
API # 05-123-12791
REMEDIATION # 29038

Sample Location (Latitude/Longitude)	Date	Approximate Depth (feet)	PID Reading (ppm-v)	Lab Submission (Y/N)
WH-SS-01 @ 5' (40.285035 / -104.623544)	06/30/23	5	57.8	Y
WH-SS-02 @ 5' (40.285021 / -104.623526)	06/30/23	5	23.8	Y
WH-SS-03 @ 5' (40.285009 / -104.623542)	06/30/23	5	9.1	Y
WH-SS-04 @ 5' (40.285021 / -104.623563)	06/30/23	5	151.5	Y
Background-01 @ 2' (40.285083 / -104.623462)	06/30/23	2	9.2	Y
WH-N @ 0.5' (40.285052 / -104.623546)	06/30/23	0.5	8.9	N
WHE @ 0.5' (40.285021 / -104.623505)	06/30/23	0.5	9.1	N
WH-S @ 0.5' (40.284993 / -104.623540)	06/30/23	0.5	6.9	N
WH-W @ 0.5' (40.285022 / -104.623579)	06/30/23	0.5	8.0	N
(Y/N) = Yes or No ppm-v = parts per million by volume PID = Photoionization Detector				



TABLE 2
SOIL ANALYTICAL RESULTS SUMMARY
SHELTON R G #26-8
CLOSURE ASSESSMENT
40.285020 / -104.623510
SE¼ NE¼ SEC.26 T4N R65W 6PM
WELD COUNTY, COLORADO
API # 05-123-12791
REMEDIATION # 29038

Sample Location		WH-SS-01 @ 5'	WH-SS-02 @ 5'	WH-SS-03 @ 5'	WH-SS-04 @ 5'	Background-01 @ 2'			
(Latitude / Longitude)		(40.285035 / -104.623544)	(40.285021 / -104.623526)	(40.285009 / -104.623542)	(40.285021 / -104.623563)	(40.285083 / -104.623462)			
Sample Date		6/30/2023	6/30/2023	6/30/2023	6/30/2023	6/30/2023			
Sample Depth		5'	5'	5'	5'	2'			
PID Reading (ppm-v)		57.8	23.8	9.1	151.5	9.2			
Regulatory Limits									
Chemical of Concern	Units	ECMC Table 915-1 RSSLs	ECMC Table 915-1 GSSLs	Local Clean-Up Level					
VOCs									
Benzene	mg/kg	1.2	0.0026	--	<0.00200	<0.00200	<0.00200	<0.00200	NA
Toluene	mg/kg	490	0.69	--	<0.00200	<0.00200	<0.00200	<0.00200	NA
Ethylbenzene	mg/kg	5.8	0.78	--	<0.00200	<0.00200	<0.00200	<0.00200	NA
Total Xylenes	mg/kg	58	9.9	--	<0.00200	<0.00200	<0.00200	<0.00200	NA
Naphthalene	mg/kg	2	0.0038	--	<0.00380	<0.00380	<0.00380	<0.00380	NA
1,2,4-Trimethylbenzene	mg/kg	30	0.0081	--	<0.00200	<0.00200	<0.00200	<0.00200	NA
1,3,5-Trimethylbenzene	mg/kg	27	0.0087	--	0.00660	<0.00200	<0.00200	0.00238	NA
TOTAL PETROLEUM HYDROCARBONS									
TPH-GRO	mg/kg	500	--	--	1.33	<0.200	<0.200	<0.200	NA
TPH-DRO	mg/kg		--	--	32.7	99.1	<25.0	<25.0	NA
TPH-RRO	mg/kg		--	--	<100	275	<100	<100	NA
POLYCYCLIC AROMATIC HYDROCARBONS									
1-Methyl-naphthalene	mg/kg	18	0.006	--	0.00383	0.00121	<0.00201	<0.00201	NA
2-Methyl-naphthalene	mg/kg	24	0.019	--	0.00634	0.00195	<0.00201	<0.00201	NA
Acenaphthene	mg/kg	360	0.55	--	0.000693	<0.00067	<0.00067	<0.00067	NA
Anthracene	mg/kg	1800	5.8	--	<0.00067	<0.00067	<0.00067	<0.00067	NA
Benzo(a)-anthracene	mg/kg	1.1	0.011	--	<0.00067	<0.00067	<0.00067	<0.00067	NA
Benzo(a)-pyrene	mg/kg	0.11	0.24	--	<0.00067	<0.00067	<0.00067	<0.00067	NA
Benzo(b)-fluoranthene	mg/kg	1.1	0.3	--	<0.00067	0.000842	<0.00067	<0.00067	NA
Benzo(k)-fluoranthene	mg/kg	11	2.9	--	<0.00067	<0.00067	<0.00067	<0.00067	NA
Chrysene	mg/kg	110	9	--	0.00122	0.000853	<0.00067	<0.00067	NA
Dibenzo(a,h)-anthracene	mg/kg	0.11	0.096	--	<0.00067	0.000798	<0.00067	<0.00067	NA
Fluoranthene	mg/kg	240	8.9	--	<0.00067	<0.00067	<0.00067	<0.00067	NA
Fluorene	mg/kg	240	0.54	--	0.00126	<0.00067	<0.00067	<0.00067	NA
Indeno(1,2,3-cd)-pyrene	mg/kg	1.1	0.98	--	<0.00067	0.000733	<0.00067	<0.00067	NA
Pyrene	mg/kg	180	1.3	--	<0.00067	<0.00067	<0.00067	<0.00067	NA
SOIL SUITABILITY (Inorganics)									
Boron	mg/L	2	--	--	1.66	1.99	1.09	0.649	NA
pH	standard unit	6-8.3	--	--	8.29	8.46 (8.15 / 8.18)	8.21	8.51 (8.30 / 8.30)	8.52
Sodium Adsorption Ratio (SAR)	--	<6	--	--	5.47	4.81	1.90	9.78	9.98
Specific Conductance (EC)	mmhos/cm	<4	--	--	1.29	1.06	0.689	0.972	NA
METALS									
Arsenic	mg/kg	0.68***	0.29***	2.85***	NA	2.04***	NA	NA	2.28***
Barium	mg/kg	15000	82	--	NA	58.1	NA	NA	45.6
Cadmium	mg/kg	71	0.38	--	NA	0.237	NA	NA	<0.0931
Copper	mg/kg	3100	46	--	NA	21.8	NA	NA	<9.31
Lead	mg/kg	400	14	--	NA	52.3*	NA	NA	<9.31
Nickel	mg/kg	1500	26	--	NA	<8.61	NA	NA	<9.31
Selenium	mg/kg	390	0.26	--	NA	0.170	NA	NA	0.135
Silver	mg/kg	390	0.8	--	NA	<0.0861	NA	NA	<0.0931
Zinc	mg/kg	23000	370	--	NA	<86.1	NA	NA	<93.1
Hexavalent Chromium	mg/kg	0.3**	0.00067**	0.1 to 1.0**	NA	<0.252**	NA	NA	NA
ECMC = Energy & Carbon Management Commission		NA - Not Analyzed		VOCs - Volatile Organic Compounds					
mg/kg = milligrams per kilogram		RSSLs = Residential Soil Screening Levels							
mmhos/cm = millimhos per centimeter		GSSLs = Protection of Groundwater Soil Screening Levels							
PID = Photoionization Detector		TPH-GRO = Total Petroleum Hydrocarbons - Gasoline Range Organics							
ppm-v = parts per million by volume		TPH-DRO = Total Petroleum Hydrocarbons - Diesel Range Organics							
mg/L = milligrams per liter		TPH-RRO = Total Petroleum Hydrocarbons - Residual Range Organics							
SAR = Sodium Adsorption Ratio									
Notes:									
Values presented with a less than symbol (<) did not contain concentrations at or above the laboratory reporting limit and/or minimum detection limit.									
Values presented in BOLD exceed ECMC Table 915-1 Regulatory Limits. Values presented with asterisk (*) exceed ECMC Table 915-1 GSSLs, only.									
Laboratory reruns were completed on samples with pH values outside ECMC Table 915-1 Regulatory Range. Results of the reruns are presented in parentheses.									
**Achievable practical quantitative limits for Hexavalent Chromium in soils is in the range of 0.1 to 1 mg/kg.									
***Arsenic is naturally occurring in Colorado. The Local Clean-up Level (2.85 mg/kg) is 1.25*Background (2.28 mg/kg).									

TABLE 3
GROUNDWATER ANALYTICAL RESULTS SUMMARY
SHELTON R G #26-8
CLOSURE ASSESSMENT
40.285020 / -104.623510
SE1/4 NE 1/4 SEC.26 T4N R65W 6PM
WELD COUNTY, COLORADO
API # 05-123-12791
REMIEDIATION # 29038

Sample Location (Latitude/Longitude)	Date	Benzene (µg/L)	Toluene (µg/L)	Ethylbenzene (µg/L)	Total Xylenes (µg/L)	Naphthalene (µg/L)	1,2,4- Trimethylbenzene (µg/L)	1,3,5 - Trimethylbenzene (µg/L)
<i>ECMC Table 915-1 Regulatory Limits (µg/L)</i>		5	560	700	1,400	140	67	67
GW-01 (40.285021 / -104.623544)	06/30/23	21.9	102	23.1	316	<2.00	36.3	22.8

ECMC = Energy & Carbon Management Commission

µg/L - micrograms per liter

Notes: Values presented with a less than symbol (<) indicate concentrations were not observed at or above the laboratory reporting limit.

Values presented in **bold** typeface exceed ECMC Table 915-1 regulatory limits for that compound.



ATTACHMENT A

Photo Log

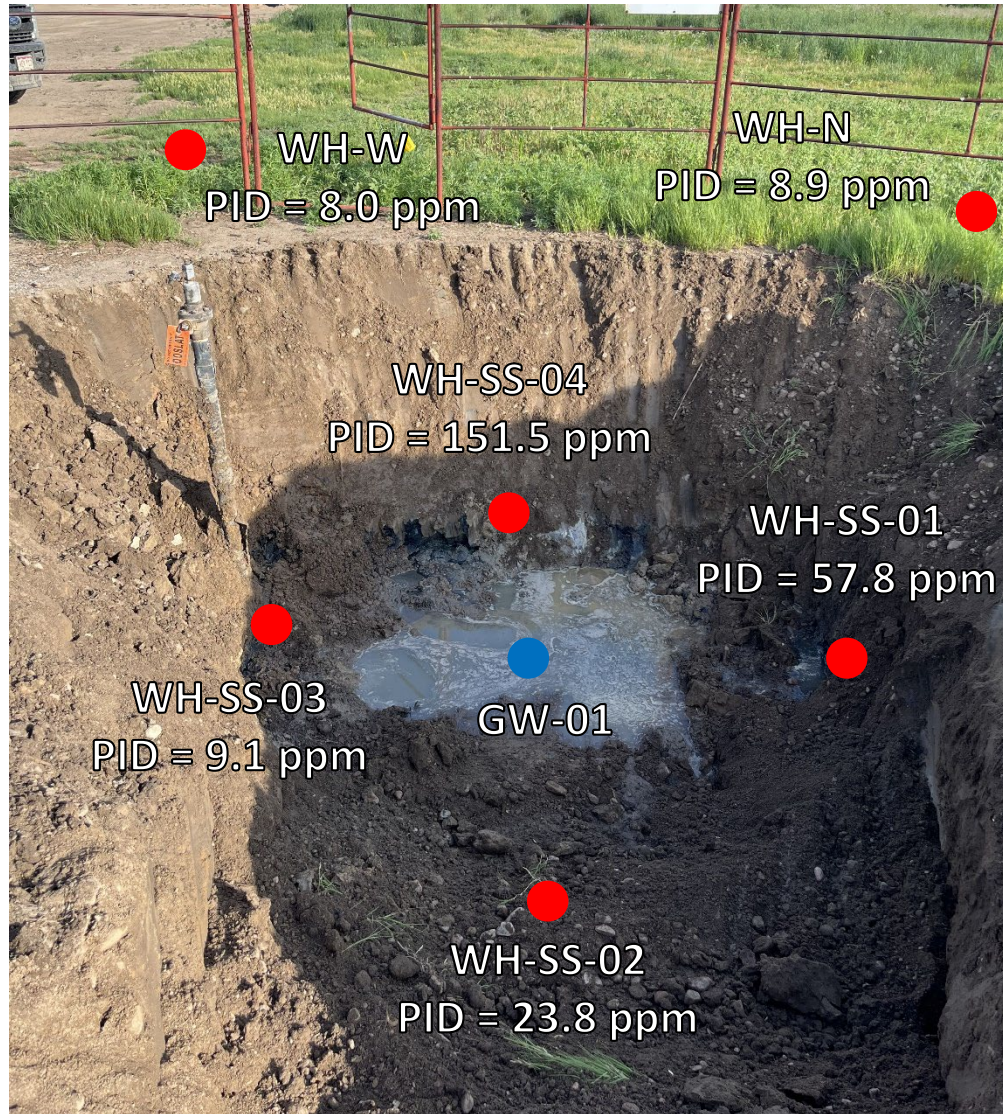
Shelton R G #26-8
API # 05-123-12791
Remediation # 29038

Closure Assessment

June 2023



Wellhead Excavation – 06/30/23



Looking west-northwest

No petroleum hydrocarbon staining or odor observed



Looking east

No petroleum hydrocarbon staining or odor observed



ATTACHMENT B

Laboratory Analytical Reports



July 19, 2023

Eagle Environmental Consulting, LLC

Martin C Eckert III

8000 W 44th Ave

Wheat Ridge CO 80033

Project Name - Noble - Shelton RG #26-8

Project Number - [none]

Attached are your analytical results for Noble - Shelton RG #26-8 received by Origins Laboratory, Inc. June 30, 2023. This project is associated with Origins project number Y306883-01.

The analytical results in the following report were analyzed under the guidelines of EPA Methods. These methods are identified as follows; "SW" are defined in SW-846, "EPA" are defined in 40CFR part 136 and "SM" are defined in the most current revision of Standard Methods For the Examination of Water and Wastewater.

The analytical results apply specifically to the samples and analyses specified per the attached Chain of Custody. As such, this report shall not be reproduced except in full, without the written approval of Origin's laboratory.

Unless otherwise noted, the analytical results for all soil samples are reported on a wet weight basis. All analytical analyses were performed under NELAP guidelines unless noted by a data qualifier.

Any holding time exceedances, deviations from the method specifications or deviations from Origins Laboratory's Standard Operating Procedures are outlined in the case narrative.

Thank you for selecting Origins for your analytical needs. Please contact us with any questions concerning this report, or if we can help with anything at all.

Origins Laboratory, Inc.
303.433.1322
o-squad@oelabinc.com



Eagle Environmental Consulting, LLC
8000 W 44th Ave
Wheat Ridge CO 80033

Martin C Eckert III
Project Number: [none]
Project: Noble - Shelton RG #26-8

CROSS REFERENCE REPORT

Sample ID	Laboratory ID	Matrix	Date Sampled	Date Received
WH-SS-01@5'	Y306883-01	Soil	June 30, 2023 7:50	06/30/2023 14:50
WH-SS-02@5'	Y306883-02	Soil	June 30, 2023 7:52	06/30/2023 14:50
WH-SS-03@5'	Y306883-03	Soil	June 30, 2023 7:54	06/30/2023 14:50
WH-SS-04@5'	Y306883-04	Soil	June 30, 2023 7:56	06/30/2023 14:50
WH-SS-04@5' SAR Rerun 1	Y306883-05	Soil	June 30, 2023 7:56	06/30/2023 14:50
WH-SS-04@5' SAR Rerun 2	Y306883-06	Soil	June 30, 2023 7:56	06/30/2023 14:50

A pH rerun was requested for WH-SS-02@5' and a pH and SAR rerun were requested for WH-SS-04@5' per Kendra's email on 07/12/2023. No errors were found in the original data, all three results are reported. JAB

Chain of Custody Modification Request

On 7/13/2023, Grace Congdon from Eagle Environmental contacted Jordan Bynon via email regarding Y306883 requesting that Table 915 Metals be added to WH-SS-02@5'.

Requested modifications to the chain of custody were made by Jordan Bynon on 7/13/2023.

Origins Laboratory, Inc.



The results in this report apply to the samples analyzed in accordance with the chain of custody document. This analytical report must be reproduced in its entirety.

Eagle Environmental Consulting, LLC
 8000 W 44th Ave
 Wheat Ridge CO 80033

Martin C Eckert III
 Project Number: [none]
 Project: Noble - Shelton RG #26-8

Origins Laboratory

F-012207-01-R1
 Effective Date: 01/09/12

Sample Receipt Checklist

Origins Work Order: 4306823

Client: Eagle

Client Project ID: Shelton RG 26-8

Checklist Completed by: JH/MS

Shipped Via: HD

(UPS, FedEx, Hand Delivered, Pick-up, etc.)

Date/time completed: 7/3/23

Airbill #: N/A

Matrix(s) Received: (Check all that apply): Soil/Solid Water Other: _____

Cooler Number/Temperature: 1, 4 °C / _____ °C / _____ °C (Describe) _____ °C

Thermometer ID: 7004

Requirement Description	Yes	No	N/A	Comments (if any)
If samples require cooling, was the temperature between 0°C to ≤ 6°C ⁽¹⁾ ?	<input checked="" type="checkbox"/>	<input type="checkbox"/>	<input type="checkbox"/>	
Is there ice present (document if blue ice is used)	<input checked="" type="checkbox"/>	<input type="checkbox"/>	<input type="checkbox"/>	
Are custody seals present on cooler? (if so, document in comments if they are signed and dated, broken or intact)	<input type="checkbox"/>	<input checked="" type="checkbox"/>	<input type="checkbox"/>	
Are custody seals present on each sample container? (if so, document in comments if they are signed and dated, broken or intact)	<input type="checkbox"/>	<input checked="" type="checkbox"/>	<input type="checkbox"/>	
Were all samples received intact ⁽¹⁾ ?	<input checked="" type="checkbox"/>	<input type="checkbox"/>	<input type="checkbox"/>	
Was adequate sample volume provided ⁽¹⁾ ?	<input checked="" type="checkbox"/>	<input type="checkbox"/>	<input type="checkbox"/>	
Are short holding time analytes or samples with HTs due within 48 hours present ⁽¹⁾ ?	<input type="checkbox"/>	<input checked="" type="checkbox"/>	<input type="checkbox"/>	
Is a chain-of-custody (COC) present and filled out completely ⁽¹⁾ ?	<input checked="" type="checkbox"/>	<input type="checkbox"/>	<input type="checkbox"/>	
Does the COC agree with the number and type of sample bottles received ⁽¹⁾ ?	<input checked="" type="checkbox"/>	<input type="checkbox"/>	<input type="checkbox"/>	
Do the sample IDs on the bottle labels match the COC ⁽¹⁾ ?	<input checked="" type="checkbox"/>	<input type="checkbox"/>	<input type="checkbox"/>	
Is the COC properly relinquished by the client with date and time recorded ⁽¹⁾ ?	<input checked="" type="checkbox"/>	<input type="checkbox"/>	<input type="checkbox"/>	
For volatiles in water – is there headspace (> ¼ inch bubble) present? If yes, contact client and note in narrative.	<input type="checkbox"/>	<input type="checkbox"/>	<input checked="" type="checkbox"/>	
Are samples preserved that require preservation and was it checked ⁽¹⁾ ? (note ID of confirmation instrument used in comments) / (preservation is not confirmed for subcontracted analyses in order to insure sample integrity)/(pH <2 for samples preserved with HNO ₃ , HCL, H ₂ SO ₄) / (pH >10 for samples preserved with NaAsO ₂ +NaOH, ZnAc+NaOH)	<input type="checkbox"/>	<input type="checkbox"/>	<input checked="" type="checkbox"/>	
Additional Comments (if any):				

⁽¹⁾If NO, then contact the client before proceeding with analysis and note date/time and person contacted as well as the corrective action to in the additional comments (above) and the case narrative.

Reviewed by (Project Manager) JH

Date/Time Reviewed 7-11-23

Origins Laboratory, Inc.



The results in this report apply to the samples analyzed in accordance with the chain of custody document. This analytical report must be reproduced in its entirety.

Eagle Environmental Consulting, LLC
 8000 W 44th Ave
 Wheat Ridge CO 80033

Martin C Eckert III
 Project Number: [none]
 Project: Noble - Shelton RG #26-8

WH-SS-01@5'
6/30/2023 7:50:00AM

Analyte	Result	Min Detection Limit	Reporting Limit	Units	Dilution	Batch	Prepared	Analyzed	Notes
---------	--------	---------------------	-----------------	-------	----------	-------	----------	----------	-------

Origins Laboratory, Inc.
Y306883-01 (Soil)

Boron (DTPA Sorbitol)

Boron	1.66		0.101	mg/L	1	B3G0611	07/06/2023	07/07/2023	
-------	------	--	-------	------	---	---------	------------	------------	--

DRO/ORO by EPA 8015D

Diesel (C10-C28)	32.7		25.0	mg/kg	1	B3G0501	07/05/2023	07/07/2023	
Residual Range Organics (C28-C40)	ND		100	"	"	"	"	"	U

Surrogate: o-Terphenyl	105 %		50-150			"	"	"	
------------------------	-------	--	--------	--	--	---	---	---	--

GBTEX+TMBs by 8260D

1,2,4-Trimethylbenzene	ND		0.00200	mg/kg	1	B3G0718	07/07/2023	07/07/2023	U
1,3,5-Trimethylbenzene	0.00660		0.00200	"	"	"	"	"	
Benzene	ND		0.00200	"	"	"	"	"	U
Ethylbenzene	ND		0.00200	"	"	"	"	"	U
Naphthalene	ND		0.00380	"	"	"	"	"	U
Toluene	ND		0.00200	"	"	"	"	"	U
Xylenes, total	ND		0.00200	"	"	"	"	"	U
Gasoline Range Hydrocarbons	1.33		0.200	"	"	"	"	"	

Surrogate: 1,2-Dichloroethane-d4	105 %		70-130			"	"	"	
----------------------------------	-------	--	--------	--	--	---	---	---	--

Origins Laboratory, Inc.



The results in this report apply to the samples analyzed in accordance with the chain of custody document. This analytical report must be reproduced in its entirety.

Eagle Environmental Consulting, LLC
 8000 W 44th Ave
 Wheat Ridge CO 80033

Martin C Eckert III
 Project Number: [none]
 Project: Noble - Shelton RG #26-8

WH-SS-01@5'
6/30/2023 7:50:00AM

Analyte	Result	Min Detection Limit	Reporting Limit	Units	Dilution	Batch	Prepared	Analyzed	Notes
---------	--------	---------------------	-----------------	-------	----------	-------	----------	----------	-------

Origins Laboratory, Inc.
Y306883-01 (Soil)

GBTEX+TMBs by 8260D

Surrogate: Toluene-d8	102 %		70-130			B3G07 18	07/07/2023	07/07/2023	
Surrogate: 4-Bromofluorobenzene	99.7 %		70-130			"	"	"	

Metals by Saturated Paste by EPA 6010

Calcium	1.98		0.499	meq/L	10	[CALC]	07/05/2023	07/06/2023	
Magnesium	2.57		0.823	"	"	"	"	"	
Sodium	8.25		0.435	"	"	"	"	"	

PAH by 8270D SIM

1-Methylnaphthalene	0.00383	0.00109	0.00201	mg/Kg	1	L691488	07/07/2023	07/10/2023	
2-Methylnaphthalene	0.00634	0.00194	0.00201	"	"	"	"	"	
Acenaphthene	0.000693	0.000304	0.00067	"	"	"	"	"	
Anthracene	ND	0.000334	0.00067	"	"	"	"	"	
Benzo(a)anthracene	ND	0.000493	0.00067	"	"	"	"	"	
Benzo(a)pyrene	ND	0.000468	0.00067	"	"	"	"	"	
Benzo(b)fluoranthene	ND	0.000585	0.00067	"	"	"	"	"	
Benzo(k)fluoranthene	ND	0.000437	0.00067	"	"	"	"	"	
Chrysene	0.00122	0.000624	0.00067	"	"	"	"	"	
Dibenz(a,h)anthracene	ND	0.000614	0.00067	"	"	"	"	"	
Fluoranthene	ND	0.000394	0.00067	"	"	"	"	"	
Fluorene	0.00126	0.000286	0.00067	"	"	"	"	"	

Origins Laboratory, Inc.



The results in this report apply to the samples analyzed in accordance with the chain of custody document. This analytical report must be reproduced in its entirety.

Eagle Environmental Consulting, LLC
 8000 W 44th Ave
 Wheat Ridge CO 80033

Martin C Eckert III
 Project Number: [none]
 Project: Noble - Shelton RG #26-8

WH-SS-01@5'
6/30/2023 7:50:00AM

Analyte	Result	Min Detection Limit	Reporting Limit	Units	Dilution	Batch	Prepared	Analyzed	Notes
---------	--------	---------------------	-----------------	-------	----------	-------	----------	----------	-------

Waypoint Analytical, LLC.
Y306883-01 (Soil)

PAH by 8270D SIM

Indeno(1,2,3-cd)pyrene	ND	0.000627	0.00067	mg/Kg	1	L691488	07/07/2023	07/10/2023	
Pyrene	ND	0.000643	0.00067	"	"	"	"	"	

Surrogate: 2-Fluorobiphenyl	49.1 %		33-115			"	"	"	
Surrogate: 4-Terphenyl-d14	45.2 %		33-122			"	"	"	
Surrogate: Nitrobenzene-d5	45.8 %		29-110			"	"	"	

pH in Soil by 9045D

pH	8.29			pH Units	1	B3G0513	07/05/2023	07/06/2023	
----	------	--	--	----------	---	---------	------------	------------	--

SAR by 20B Saturated Paste

SAR	5.47			SAR	1	B3G0505	07/05/2023	07/06/2023	
-----	------	--	--	-----	---	---------	------------	------------	--

Specific Conductance Mod. 9050A

Specific Conductance (EC)	1.29		0.00500	mmhos/cm	1	B3G0513	07/05/2023	07/06/2023	
---------------------------	------	--	---------	----------	---	---------	------------	------------	--

Origins Laboratory, Inc.



The results in this report apply to the samples analyzed in accordance with the chain of custody document. This analytical report must be reproduced in its entirety.

Eagle Environmental Consulting, LLC
 8000 W 44th Ave
 Wheat Ridge CO 80033

Martin C Eckert III
 Project Number: [none]
 Project: Noble - Shelton RG #26-8

WH-SS-02@5'
6/30/2023 7:52:00AM

Analyte	Result	Min Detection Limit	Reporting Limit	Units	Dilution	Batch	Prepared	Analyzed	Notes
---------	--------	---------------------	-----------------	-------	----------	-------	----------	----------	-------

Origins Laboratory, Inc.
Y306883-02 (Soil)

Boron (DTPA Sorbitol)

Boron	1.99		0.0993	mg/L	1	B3G0611	07/06/2023	07/07/2023	
-------	------	--	--------	------	---	---------	------------	------------	--

DRO/ORO by EPA 8015D

Diesel (C10-C28)	99.1		25.0	mg/kg	1	B3G0501	07/05/2023	07/07/2023	
Residual Range Organics (C28-C40)	275		100	"	"	"	"	"	

Surrogate: o-Terphenyl	97.5 %		50-150			"	"	"	
------------------------	--------	--	--------	--	--	---	---	---	--

GBTEX+TMBs by 8260D

1,2,4-Trimethylbenzene	ND		0.00200	mg/kg	1	B3G0718	07/07/2023	07/07/2023	U
1,3,5-Trimethylbenzene	ND		0.00200	"	"	"	"	"	U
Benzene	ND		0.00200	"	"	"	"	"	U
Ethylbenzene	ND		0.00200	"	"	"	"	"	U
Naphthalene	ND		0.00380	"	"	"	"	"	U
Toluene	ND		0.00200	"	"	"	"	"	U
Xylenes, total	ND		0.00200	"	"	"	"	"	U
Gasoline Range Hydrocarbons	ND		0.200	"	"	"	"	"	U

Origins Laboratory, Inc.



The results in this report apply to the samples analyzed in accordance with the chain of custody document. This analytical report must be reproduced in its entirety.

Eagle Environmental Consulting, LLC
 8000 W 44th Ave
 Wheat Ridge CO 80033

Martin C Eckert III
 Project Number: [none]
 Project: Noble - Shelton RG #26-8

WH-SS-02@5'
6/30/2023 7:52:00AM

Analyte	Result	Min Detection Limit	Reporting Limit	Units	Dilution	Batch	Prepared	Analyzed	Notes
---------	--------	---------------------	-----------------	-------	----------	-------	----------	----------	-------

Origins Laboratory, Inc.
Y306883-02 (Soil)

GBTEX+TMBs by 8260D

Surrogate: 1,2-Dichloroethane-d4	107 %		70-130			B3G07 18	07/07/2023	07/07/2023	
Surrogate: Toluene-d8	99.4 %		70-130			"	"	"	
Surrogate: 4-Bromofluorobenzene	101 %		70-130			"	"	"	

Metals by Saturated Paste by EPA 6010

Calcium	1.63		0.499	meq/L	10	[CALC]	07/05/2023	07/06/2023	
Magnesium	2.19		0.823	"	"	"	"	"	
Sodium	6.65		0.435	"	"	"	"	"	

PAH by 8270D SIM

1-Methylnaphthalene	0.00121	0.00109	0.00201	mg/Kg	1	L691600	07/08/2023	07/10/2023	J
2-Methylnaphthalene	0.00195	0.00194	0.00201	"	"	"	"	"	J
Acenaphthene	ND	0.000304	0.00067	"	"	"	"	"	
Anthracene	ND	0.000334	0.00067	"	"	"	"	"	
Benzo(a)anthracene	ND	0.000493	0.00067	"	"	"	"	"	
Benzo(a)pyrene	ND	0.000468	0.00067	"	"	"	"	"	
Benzo(b)fluoranthene	0.000842	0.000585	0.00067	"	"	"	"	"	
Benzo(k)fluoranthene	ND	0.000437	0.00067	"	"	"	"	"	
Chrysene	0.000853	0.000624	0.00067	"	"	"	"	"	
Dibenz(a,h)anthracene	0.000798	0.000614	0.00067	"	"	"	"	"	
Fluoranthene	ND	0.000394	0.00067	"	"	"	"	"	

Origins Laboratory, Inc.



The results in this report apply to the samples analyzed in accordance with the chain of custody document. This analytical report must be reproduced in its entirety.

Eagle Environmental Consulting, LLC
 8000 W 44th Ave
 Wheat Ridge CO 80033

Martin C Eckert III
 Project Number: [none]
 Project: Noble - Shelton RG #26-8

WH-SS-02@5'
6/30/2023 7:52:00AM

Analyte	Result	Min Detection Limit	Reporting Limit	Units	Dilution	Batch	Prepared	Analyzed	Notes
---------	--------	---------------------	-----------------	-------	----------	-------	----------	----------	-------

Waypoint Analytical, LLC.
Y306883-02 (Soil)

PAH by 8270D SIM

Fluorene	ND	0.000286	0.00067	mg/Kg	1	L691600	07/08/2023	07/10/2023	
Indeno(1,2,3-cd)pyrene	0.000733	0.000627	0.00067	"	"	"	"	"	
Pyrene	ND	0.000643	0.00067	"	"	"	"	"	

Surrogate: 2-Fluorobiphenyl	53.2 %		33-115			"	"	"	
Surrogate: 4-Terphenyl-d14	45.6 %		33-122			"	"	"	
Surrogate: Nitrobenzene-d5	49.5 %		29-110			"	"	"	

pH in Soil by 9045D

pH	8.46			pH Units	1	B3G0513	07/05/2023	07/06/2023	
----	-------------	--	--	----------	---	---------	------------	------------	--

SAR by 20B Saturated Paste

SAR	4.81			SAR	1	B3G0505	07/05/2023	07/06/2023	
-----	-------------	--	--	-----	---	---------	------------	------------	--

Specific Conductance Mod. 9050A

Specific Conductance (EC)	1.06		0.00500	mmhos/cm	1	B3G0513	07/05/2023	07/06/2023	
---------------------------	-------------	--	---------	----------	---	---------	------------	------------	--

Table 915 metals by EPA 6020B

Arsenic	2.04		0.0861	mg/kg	10	B3G1323	07/13/2023	07/14/2023	
Barium	58.1		8.61	"	"	"	"	"	

Origins Laboratory, Inc.



The results in this report apply to the samples analyzed in accordance with the chain of custody document. This analytical report must be reproduced in its entirety.

Eagle Environmental Consulting, LLC
 8000 W 44th Ave
 Wheat Ridge CO 80033

Martin C Eckert III
 Project Number: [none]
 Project: Noble - Shelton RG #26-8

WH-SS-02@5'
6/30/2023 7:52:00AM

Analyte	Result	Min Detection Limit	Reporting Limit	Units	Dilution	Batch	Prepared	Analyzed	Notes
---------	--------	---------------------	-----------------	-------	----------	-------	----------	----------	-------

Origins Laboratory, Inc.
Y306883-02 (Soil)

Table 915 metals by EPA 6020B

Cadmium	0.237		0.0861	mg/kg	10	B3G1323	07/13/2023	07/14/2023	
Copper	21.8		8.61	"	"	"	"	"	
Lead	52.3		8.61	"	"	"	"	"	
Nickel	ND		8.61	"	"	"	"	"	
Selenium	0.170		0.0861	"	"	"	"	"	
Silver	ND		0.0861	"	"	"	"	"	
Zinc	ND		86.1	"	"	"	"	"	

Total Metals by 7196A

Chromium, Hexavalent	ND	0.252	0.518	mg/Kg	1	L693395	06/30/2023	07/18/2023	
----------------------	----	-------	-------	-------	---	---------	------------	------------	--

Origins Laboratory, Inc.



The results in this report apply to the samples analyzed in accordance with the chain of custody document. This analytical report must be reproduced in its entirety.

Eagle Environmental Consulting, LLC
 8000 W 44th Ave
 Wheat Ridge CO 80033

Martin C Eckert III
 Project Number: [none]
 Project: Noble - Shelton RG #26-8

WH-SS-02@5'

6/30/2023 7:52:00AM

Analyte	Result	Min Detection Limit	Reporting Limit	Units	Dilution	Batch	Prepared	Analyzed	Notes
---------	--------	---------------------	-----------------	-------	----------	-------	----------	----------	-------

Origins Laboratory, Inc.
Y306883-02RE1 (Soil)

pH in Soil by 9045D

pH	8.15			pH Units	1	B3G1215	07/05/2023	07/13/2023	
----	------	--	--	----------	---	---------	------------	------------	--

Origins Laboratory, Inc.



The results in this report apply to the samples analyzed in accordance with the chain of custody document. This analytical report must be reproduced in its entirety.

Eagle Environmental Consulting, LLC
8000 W 44th Ave
Wheat Ridge CO 80033

Martin C Eckert III
Project Number: [none]
Project: Noble - Shelton RG #26-8

WH-SS-02@5'

6/30/2023 7:52:00AM

Analyte	Result	Min Detection Limit	Reporting Limit	Units	Dilution	Batch	Prepared	Analyzed	Notes
---------	--------	---------------------	-----------------	-------	----------	-------	----------	----------	-------

Origins Laboratory, Inc.
Y306883-02RE2 (Soil)

pH in Soil by 9045D

pH	8.18			pH Units	1	B3G1215	07/05/2023	07/13/2023	
----	------	--	--	----------	---	---------	------------	------------	--

Origins Laboratory, Inc.



The results in this report apply to the samples analyzed in accordance with the chain of custody document. This analytical report must be reproduced in its entirety.

Eagle Environmental Consulting, LLC
 8000 W 44th Ave
 Wheat Ridge CO 80033

Martin C Eckert III
 Project Number: [none]
 Project: Noble - Shelton RG #26-8

WH-SS-03@5'
6/30/2023 7:54:00AM

Analyte	Result	Min Detection Limit	Reporting Limit	Units	Dilution	Batch	Prepared	Analyzed	Notes
---------	--------	---------------------	-----------------	-------	----------	-------	----------	----------	-------

Origins Laboratory, Inc.
Y306883-03 (Soil)

Boron (DTPA Sorbitol)

Boron	1.09		0.100	mg/L	1	B3G0611	07/06/2023	07/07/2023	
-------	------	--	-------	------	---	---------	------------	------------	--

DRO/ORO by EPA 8015D

Diesel (C10-C28)	ND		25.0	mg/kg	1	B3G0501	07/05/2023	07/07/2023	U
Residual Range Organics (C28-C40)	ND		100	"	"	"	"	"	U

Surrogate: o-Terphenyl	91.0 %		50-150			"	"	"	
------------------------	--------	--	--------	--	--	---	---	---	--

GBTEX+TMBs by 8260D

1,2,4-Trimethylbenzene	ND		0.00200	mg/kg	1	B3G0718	07/07/2023	07/07/2023	U
1,3,5-Trimethylbenzene	ND		0.00200	"	"	"	"	"	U
Benzene	ND		0.00200	"	"	"	"	"	U
Ethylbenzene	ND		0.00200	"	"	"	"	"	U
Naphthalene	ND		0.00380	"	"	"	"	"	U
Toluene	ND		0.00200	"	"	"	"	"	U
Xylenes, total	ND		0.00200	"	"	"	"	"	U
Gasoline Range Hydrocarbons	ND		0.200	"	"	"	"	"	U

Origins Laboratory, Inc.



The results in this report apply to the samples analyzed in accordance with the chain of custody document. This analytical report must be reproduced in its entirety.

Eagle Environmental Consulting, LLC
 8000 W 44th Ave
 Wheat Ridge CO 80033

Martin C Eckert III
 Project Number: [none]
 Project: Noble - Shelton RG #26-8

WH-SS-03@5'
6/30/2023 7:54:00AM

Analyte	Result	Min Detection Limit	Reporting Limit	Units	Dilution	Batch	Prepared	Analyzed	Notes
---------	--------	---------------------	-----------------	-------	----------	-------	----------	----------	-------

Origins Laboratory, Inc.
Y306883-03 (Soil)

GBTEX+TMBs by 8260D

Surrogate: 1,2-Dichloroethane-d4	108 %		70-130			B3G07 18	07/07/2023	07/07/2023	
Surrogate: Toluene-d8	99.5 %		70-130			"	"	"	
Surrogate: 4-Bromofluorobenzene	98.0 %		70-130			"	"	"	

Metals by Saturated Paste by EPA 6010

Calcium	1.88		0.499	meq/L	10	[CALC]	07/05/2023	07/06/2023	
Magnesium	2.15		0.823	"	"	"	"	"	
Sodium	2.69		0.435	"	"	"	"	"	

PAH by 8270D SIM

1-Methylnaphthalene	ND	0.00109	0.00201	mg/Kg	1	L691600	07/08/2023	07/10/2023	
2-Methylnaphthalene	ND	0.00194	0.00201	"	"	"	"	"	
Acenaphthene	ND	0.000304	0.00067	"	"	"	"	"	
Anthracene	ND	0.000334	0.00067	"	"	"	"	"	
Benzo(a)anthracene	ND	0.000493	0.00067	"	"	"	"	"	
Benzo(a)pyrene	ND	0.000468	0.00067	"	"	"	"	"	
Benzo(b)fluoranthene	ND	0.000585	0.00067	"	"	"	"	"	
Benzo(k)fluoranthene	ND	0.000437	0.00067	"	"	"	"	"	
Chrysene	ND	0.000624	0.00067	"	"	"	"	"	
Dibenz(a,h)anthracene	ND	0.000614	0.00067	"	"	"	"	"	

Origins Laboratory, Inc.



The results in this report apply to the samples analyzed in accordance with the chain of custody document. This analytical report must be reproduced in its entirety.

Eagle Environmental Consulting, LLC
 8000 W 44th Ave
 Wheat Ridge CO 80033

Martin C Eckert III
 Project Number: [none]
 Project: Noble - Shelton RG #26-8

WH-SS-03@5'
6/30/2023 7:54:00AM

Analyte	Result	Min Detection Limit	Reporting Limit	Units	Dilution	Batch	Prepared	Analyzed	Notes
---------	--------	---------------------	-----------------	-------	----------	-------	----------	----------	-------

Waypoint Analytical, LLC.
Y306883-03 (Soil)

PAH by 8270D SIM

Fluoranthene	ND	0.000394	0.00067	mg/Kg	1	L691600	07/08/2023	07/10/2023	
Fluorene	ND	0.000286	0.00067	"	"	"	"	"	
Indeno(1,2,3-cd)pyrene	ND	0.000627	0.00067	"	"	"	"	"	
Pyrene	ND	0.000643	0.00067	"	"	"	"	"	

Surrogate: 2-Fluorobiphenyl	53 %		33-115			"	"	"	
Surrogate: 4-Terphenyl-d14	59.5 %		33-122			"	"	"	
Surrogate: Nitrobenzene-d5	53 %		29-110			"	"	"	

pH in Soil by 9045D

pH	8.21			pH Units	1	B3G0513	07/05/2023	07/06/2023	
----	------	--	--	----------	---	---------	------------	------------	--

SAR by 20B Saturated Paste

SAR	1.90			SAR	1	B3G0505	07/05/2023	07/06/2023	
-----	------	--	--	-----	---	---------	------------	------------	--

Specific Conductance Mod. 9050A

Specific Conductance (EC)	0.689		0.00500	mmhos/cm	1	B3G0513	07/05/2023	07/06/2023	
---------------------------	-------	--	---------	----------	---	---------	------------	------------	--

Origins Laboratory, Inc.



The results in this report apply to the samples analyzed in accordance with the chain of custody document. This analytical report must be reproduced in its entirety.

Eagle Environmental Consulting, LLC
 8000 W 44th Ave
 Wheat Ridge CO 80033

Martin C Eckert III
 Project Number: [none]
 Project: Noble - Shelton RG #26-8

WH-SS-04@5'
6/30/2023 7:56:00AM

Analyte	Result	Min Detection Limit	Reporting Limit	Units	Dilution	Batch	Prepared	Analyzed	Notes
---------	--------	---------------------	-----------------	-------	----------	-------	----------	----------	-------

Origins Laboratory, Inc.
Y306883-04 (Soil)

Boron (DTPA Sorbitol)

Boron	0.649		0.0984	mg/L	1	B3G0611	07/06/2023	07/07/2023	
-------	-------	--	--------	------	---	---------	------------	------------	--

DRO/ORO by EPA 8015D

Diesel (C10-C28)	ND		25.0	mg/kg	1	B3G0501	07/05/2023	07/07/2023	U
Residual Range Organics (C28-C40)	ND		100	"	"	"	"	"	U

Surrogate: o-Terphenyl	97.6 %		50-150			"	"	"	
------------------------	--------	--	--------	--	--	---	---	---	--

GBTEX+TMBs by 8260D

1,2,4-Trimethylbenzene	ND		0.00200	mg/kg	1	B3G0718	07/07/2023	07/07/2023	U
1,3,5-Trimethylbenzene	0.00238		0.00200	"	"	"	"	"	
Benzene	ND		0.00200	"	"	"	"	"	U
Ethylbenzene	ND		0.00200	"	"	"	"	"	U
Naphthalene	ND		0.00380	"	"	"	"	"	U
Toluene	ND		0.00200	"	"	"	"	"	U
Xylenes, total	ND		0.00200	"	"	"	"	"	U
Gasoline Range Hydrocarbons	ND		0.200	"	"	"	"	"	U

Origins Laboratory, Inc.



The results in this report apply to the samples analyzed in accordance with the chain of custody document. This analytical report must be reproduced in its entirety.

Eagle Environmental Consulting, LLC
 8000 W 44th Ave
 Wheat Ridge CO 80033

Martin C Eckert III
 Project Number: [none]
 Project: Noble - Shelton RG #26-8

WH-SS-04@5'
6/30/2023 7:56:00AM

Analyte	Result	Min Detection Limit	Reporting Limit	Units	Dilution	Batch	Prepared	Analyzed	Notes
---------	--------	---------------------	-----------------	-------	----------	-------	----------	----------	-------

Origins Laboratory, Inc.
Y306883-04 (Soil)

GBTEX+TMBs by 8260D

Surrogate: 1,2-Dichloroethane-d4	105 %		70-130			B3G07 18	07/07/2023	07/07/2023	
Surrogate: Toluene-d8	97.4 %		70-130			"	"	"	
Surrogate: 4-Bromofluorobenzene	102 %		70-130			"	"	"	

Metals by Saturated Paste by EPA 6010

Calcium	0.758		0.499	meq/L	10	[CALC]	07/05/2023	07/06/2023	
Magnesium	1.04		0.823	"	"	"	"	"	
Sodium	9.27		0.435	"	"	"	"	"	

PAH by 8270D SIM

1-Methylnaphthalene	ND	0.00109	0.00201	mg/Kg	1	L691600	07/08/2023	07/10/2023	
2-Methylnaphthalene	ND	0.00194	0.00201	"	"	"	"	"	
Acenaphthene	ND	0.000304	0.00067	"	"	"	"	"	
Anthracene	ND	0.000334	0.00067	"	"	"	"	"	
Benzo(a)anthracene	ND	0.000493	0.00067	"	"	"	"	"	
Benzo(a)pyrene	ND	0.000468	0.00067	"	"	"	"	"	
Benzo(b)fluoranthene	ND	0.000585	0.00067	"	"	"	"	"	
Benzo(k)fluoranthene	ND	0.000437	0.00067	"	"	"	"	"	
Chrysene	ND	0.000624	0.00067	"	"	"	"	"	
Dibenz(a,h)anthracene	ND	0.000614	0.00067	"	"	"	"	"	

Origins Laboratory, Inc.



The results in this report apply to the samples analyzed in accordance with the chain of custody document. This analytical report must be reproduced in its entirety.

Eagle Environmental Consulting, LLC
 8000 W 44th Ave
 Wheat Ridge CO 80033

Martin C Eckert III
 Project Number: [none]
 Project: Noble - Shelton RG #26-8

WH-SS-04@5'
6/30/2023 7:56:00AM

Analyte	Result	Min Detection Limit	Reporting Limit	Units	Dilution	Batch	Prepared	Analyzed	Notes
---------	--------	---------------------	-----------------	-------	----------	-------	----------	----------	-------

Waypoint Analytical, LLC.
Y306883-04 (Soil)

PAH by 8270D SIM

Fluoranthene	ND	0.000394	0.00067	mg/Kg	1	L691600	07/08/2023	07/10/2023	
Fluorene	ND	0.000286	0.00067	"	"	"	"	"	
Indeno(1,2,3-cd)pyrene	ND	0.000627	0.00067	"	"	"	"	"	
Pyrene	ND	0.000643	0.00067	"	"	"	"	"	

Surrogate: 2-Fluorobiphenyl	51.2 %		33-115			"	"	"	
Surrogate: 4-Terphenyl-d14	62 %		33-122			"	"	"	
Surrogate: Nitrobenzene-d5	51.8 %		29-110			"	"	"	

pH in Soil by 9045D

pH	8.51			pH Units	1	B3G0513	07/05/2023	07/06/2023	
----	------	--	--	----------	---	---------	------------	------------	--

SAR by 20B Saturated Paste

SAR	9.78			SAR	1	B3G0505	07/05/2023	07/06/2023	
-----	------	--	--	-----	---	---------	------------	------------	--

Specific Conductance Mod. 9050A

Specific Conductance (EC)	0.972		0.00500	mmhos/cm	1	B3G0513	07/05/2023	07/06/2023	
---------------------------	-------	--	---------	----------	---	---------	------------	------------	--

Origins Laboratory, Inc.



The results in this report apply to the samples analyzed in accordance with the chain of custody document. This analytical report must be reproduced in its entirety.

Eagle Environmental Consulting, LLC
8000 W 44th Ave
Wheat Ridge CO 80033

Martin C Eckert III
Project Number: [none]
Project: Noble - Shelton RG #26-8

WH-SS-04@5'

6/30/2023 7:56:00AM

Analyte	Result	Min Detection Limit	Reporting Limit	Units	Dilution	Batch	Prepared	Analyzed	Notes
---------	--------	---------------------	-----------------	-------	----------	-------	----------	----------	-------

Origins Laboratory, Inc.
Y306883-04RE1 (Soil)

pH in Soil by 9045D

pH	8.30			pH Units	1	B3G1316	07/05/2023	07/14/2023	
----	------	--	--	----------	---	---------	------------	------------	--

Origins Laboratory, Inc.



The results in this report apply to the samples analyzed in accordance with the chain of custody document. This analytical report must be reproduced in its entirety.

Eagle Environmental Consulting, LLC
8000 W 44th Ave
Wheat Ridge CO 80033

Martin C Eckert III
Project Number: [none]
Project: Noble - Shelton RG #26-8

WH-SS-04@5'

6/30/2023 7:56:00AM

Analyte	Result	Min Detection Limit	Reporting Limit	Units	Dilution	Batch	Prepared	Analyzed	Notes
---------	--------	---------------------	-----------------	-------	----------	-------	----------	----------	-------

Origins Laboratory, Inc.
Y306883-04RE2 (Soil)

pH in Soil by 9045D

pH	8.30			pH Units	1	B3G1316	07/05/2023	07/14/2023	
----	------	--	--	----------	---	---------	------------	------------	--

Origins Laboratory, Inc.



The results in this report apply to the samples analyzed in accordance with the chain of custody document. This analytical report must be reproduced in its entirety.

Eagle Environmental Consulting, LLC
8000 W 44th Ave
Wheat Ridge CO 80033

Martin C Eckert III
Project Number: [none]
Project: Noble - Shelton RG #26-8

WH-SS-04@5' SAR Rerun 1
6/30/2023 7:56:00AM

Analyte	Result	Min Detection Limit	Reporting Limit	Units	Dilution	Batch	Prepared	Analyzed	Notes
---------	--------	---------------------	-----------------	-------	----------	-------	----------	----------	-------

Origins Laboratory, Inc.
Y306883-05 (Soil)

Metals by Saturated Paste by EPA 6010

Calcium	0.916	0.499	meq/L	10	[CALC]	07/13/2023	07/14/2023		
Magnesium	1.23	0.823	"	"	"	"	"	"	"
Sodium	7.91	0.435	"	"	"	"	"	"	"

SAR by 20B Saturated Paste

SAR	7.65		SAR	1	B3G1310	"	"		
-----	------	--	-----	---	---------	---	---	--	--

Origins Laboratory, Inc.



The results in this report apply to the samples analyzed in accordance with the chain of custody document. This analytical report must be reproduced in its entirety.

Eagle Environmental Consulting, LLC
8000 W 44th Ave
Wheat Ridge CO 80033

Martin C Eckert III
Project Number: [none]
Project: Noble - Shelton RG #26-8

WH-SS-04@5' SAR Rerun 2
6/30/2023 7:56:00AM

Analyte	Result	Min Detection Limit	Reporting Limit	Units	Dilution	Batch	Prepared	Analyzed	Notes
---------	--------	---------------------	-----------------	-------	----------	-------	----------	----------	-------

Origins Laboratory, Inc.
Y306883-06 (Soil)

Metals by Saturated Paste by EPA 6010

Calcium	0.936	0.499	meq/L	10	[CALC]	07/13/2023	07/14/2023		
Magnesium	1.27	0.823	"	"	"	"	"	"	"
Sodium	7.96	0.435	"	"	"	"	"	"	"

SAR by 20B Saturated Paste

SAR	7.58		SAR	1	B3G1310	"	"		
-----	------	--	-----	---	---------	---	---	--	--

Origins Laboratory, Inc.



The results in this report apply to the samples analyzed in accordance with the chain of custody document. This analytical report must be reproduced in its entirety.

Eagle Environmental Consulting, LLC
 8000 W 44th Ave
 Wheat Ridge CO 80033

Martin C Eckert III
 Project Number: [none]
 Project: Noble - Shelton RG #26-8

Extractable Petroleum Hydrocarbons by 8015D - Quality Control
Origins Laboratory, Inc.

Analyte	Result	Reporting Limit	Units	Spike Level	Source Result	%REC	%REC Limits	RPD	RPD Limit	Notes
Batch B3G0501 - EPA 3550B										
Blank (B3G0501-BLK1)										
					Prepared: 07/05/2023 Analyzed: 07/07/2023					
Diesel (C10-C28)	ND	25.0	mg/kg							U
Residual Range Organics (C28-C40)	ND	100	"							U
Surrogate: o-Terphenyl	26		"	24.9		106	50-150			

Origins Laboratory, Inc.



The results in this report apply to the samples analyzed in accordance with the chain of custody document. This analytical report must be reproduced in its entirety.

Eagle Environmental Consulting, LLC
 8000 W 44th Ave
 Wheat Ridge CO 80033

Martin C Eckert III
 Project Number: [none]
 Project: Noble - Shelton RG #26-8

Extractable Petroleum Hydrocarbons by 8015D - Quality Control
Origins Laboratory, Inc.

Analyte	Result	Reporting Limit	Units	Spike Level	Source Result	%REC	%REC Limits	RPD	RPD Limit	Notes
---------	--------	-----------------	-------	-------------	---------------	------	-------------	-----	-----------	-------

Batch B3G0501 - EPA 3550B

LCS (B3G0501-BS1)

Prepared: 07/05/2023 Analyzed: 07/07/2023

Diesel (C10-C28)	896	50.0	mg/kg	1000		89.6	70-130			
Residual Range Organics (C28-C40)	1130	200	"	1000		113	70-130			
Surrogate: o-Terphenyl	48		"	49.8		95.9	50-150			

Origins Laboratory, Inc.



The results in this report apply to the samples analyzed in accordance with the chain of custody document. This analytical report must be reproduced in its entirety.

Eagle Environmental Consulting, LLC
 8000 W 44th Ave
 Wheat Ridge CO 80033

Martin C Eckert III
 Project Number: [none]
 Project: Noble - Shelton RG #26-8

Extractable Petroleum Hydrocarbons by 8015D - Quality Control
Origins Laboratory, Inc.

Analyte	Result	Reporting Limit	Units	Spike Level	Source Result	%REC	%REC Limits	RPD	RPD Limit	Notes
---------	--------	-----------------	-------	-------------	---------------	------	-------------	-----	-----------	-------

Batch B3G0501 - EPA 3550B

Matrix Spike (B3G0501-MS1)	Source: Y306881-01			Prepared: 07/05/2023 Analyzed: 07/07/2023						
Diesel (C10-C28)	2160	50.0	mg/kg	1000	1480	67.6	70-130			QM-07
Residual Range Organics (C28-C40)	1170	200	"	1000	223	94.7	70-130			
Surrogate: o-Terphenyl	69		"	49.8		139	50-150			

Origins Laboratory, Inc.



The results in this report apply to the samples analyzed in accordance with the chain of custody document. This analytical report must be reproduced in its entirety.

Eagle Environmental Consulting, LLC
 8000 W 44th Ave
 Wheat Ridge CO 80033

Martin C Eckert III
 Project Number: [none]
 Project: Noble - Shelton RG #26-8

Extractable Petroleum Hydrocarbons by 8015D - Quality Control
Origins Laboratory, Inc.

Analyte	Result	Reporting Limit	Units	Spike Level	Source Result	%REC	%REC Limits	RPD	RPD Limit	Notes
Batch B3G0501 - EPA 3550B										
Matrix Spike Dup (B3G0501-MSD1)		Source: Y306881-01			Prepared: 07/05/2023 Analyzed: 07/07/2023					
Diesel (C10-C28)	2290	50.0	mg/kg	1000	1480	80.6	70-130	5.86	35	
Residual Range Organics (C28-C40)	1200	200	"	1000	223	97.4	70-130	2.26	35	
Surrogate: o-Terphenyl	51		"	49.8		102	50-150			

Origins Laboratory, Inc.



The results in this report apply to the samples analyzed in accordance with the chain of custody document. This analytical report must be reproduced in its entirety.

Eagle Environmental Consulting, LLC
 8000 W 44th Ave
 Wheat Ridge CO 80033

Martin C Eckert III
 Project Number: [none]
 Project: Noble - Shelton RG #26-8

Extractable Petroleum Hydrocarbons by 8015D - Quality Control
Origins Laboratory, Inc.

Analyte	Result	Reporting Limit	Units	Spike Level	Source Result	%REC	%REC Limits	RPD	RPD Limit	Notes
---------	--------	-----------------	-------	-------------	---------------	------	-------------	-----	-----------	-------

Batch B3G0718 - EPA 5030 (soil)

Blank (B3G0718-BLK1)

Prepared: 07/07/2023 Analyzed: 07/07/2023

1,2,4-Trimethylbenzene	ND	0.00200	mg/kg							U
1,3,5-Trimethylbenzene	ND	0.00200	"							U
Benzene	ND	0.00200	"							U
Ethylbenzene	ND	0.00200	"							U
Naphthalene	ND	0.00380	"							U
Toluene	ND	0.00200	"							U
Xylenes, total	ND	0.00200	"							U
Gasoline Range Hydrocarbons	ND	0.200	"							U
Surrogate: 1,2-Dichloroethane-d4	0.12		"	0.125	97.1		70-130			
Surrogate: Toluene-d8	0.12		"	0.125	97.3		70-130			
Surrogate: 4-Bromofluorobenzene	0.12		"	0.125	93.4		70-130			

Origins Laboratory, Inc.



The results in this report apply to the samples analyzed in accordance with the chain of custody document. This analytical report must be reproduced in its entirety.

Eagle Environmental Consulting, LLC
 8000 W 44th Ave
 Wheat Ridge CO 80033

Martin C Eckert III
 Project Number: [none]
 Project: Noble - Shelton RG #26-8

Volatile Organic Compounds by GC/MS SW846 8260D - Quality Control
Origins Laboratory, Inc.

Analyte	Result	Reporting Limit	Units	Spike Level	Source Result	%REC	%REC Limits	RPD	RPD Limit	Notes
---------	--------	-----------------	-------	-------------	---------------	------	-------------	-----	-----------	-------

Batch B3G0718 - EPA 5030 (soil)

LCS (B3G0718-BS1)

Prepared: 07/07/2023 Analyzed: 07/07/2023

1,2,4-Trimethylbenzene	0.101	0.00200	mg/kg	0.100		101	70-130			
1,3,5-Trimethylbenzene	0.104	0.00200	"	0.100		104	70-130			
Benzene	0.0925	0.00200	"	0.100		92.5	70-130			
Ethylbenzene	0.105	0.00200	"	0.100		105	70-130			
Naphthalene	0.101	0.00380	"	0.100		101	70-130			
Toluene	0.100	0.00200	"	0.100		100	70-130			
o-Xylene	0.105	0.00200	"	0.100		105	70-130			
m,p-Xylene	0.207	0.00400	"	0.200		103	70-130			
Surrogate: 1,2-Dichloroethane-d4	0.12		"	0.125		92.8	70-130			
Surrogate: Toluene-d8	0.13		"	0.125		105	70-130			
Surrogate: 4-Bromofluorobenzene	0.12		"	0.125		99.1	70-130			

Origins Laboratory, Inc.



The results in this report apply to the samples analyzed in accordance with the chain of custody document. This analytical report must be reproduced in its entirety.

Eagle Environmental Consulting, LLC
 8000 W 44th Ave
 Wheat Ridge CO 80033

Martin C Eckert III
 Project Number: [none]
 Project: Noble - Shelton RG #26-8

Volatile Organic Compounds by GC/MS SW846 8260D - Quality Control
Origins Laboratory, Inc.

Analyte	Result	Reporting Limit	Units	Spike Level	Source Result	%REC	%REC Limits	RPD	RPD Limit	Notes
---------	--------	-----------------	-------	-------------	---------------	------	-------------	-----	-----------	-------

Batch B3G0718 - EPA 5030 (soil)

Matrix Spike (B3G0718-MS1)	Source: Y306881-02			Prepared: 07/07/2023 Analyzed: 07/07/2023						
1,2,4-Trimethylbenzene	0.0898	0.00200	mg/kg	0.100	ND	89.8	70-130			
1,3,5-Trimethylbenzene	0.0976	0.00200	"	0.100	ND	97.6	70-130			
Benzene	0.0843	0.00200	"	0.100	ND	84.3	70-130			
Ethylbenzene	0.101	0.00200	"	0.100	ND	101	70-130			
Naphthalene	0.0920	0.00380	"	0.100	ND	92.0	70-130			
Toluene	0.0939	0.00200	"	0.100	ND	93.9	70-130			
o-Xylene	0.100	0.00200	"	0.100	ND	100	70-130			
m,p-Xylene	0.198	0.00400	"	0.200	ND	99.1	70-130			
Surrogate: 1,2-Dichloroethane-d4	0.12		"	0.125		92.6	70-130			
Surrogate: Toluene-d8	0.13		"	0.125		101	70-130			
Surrogate: 4-Bromofluorobenzene	0.13		"	0.125		101	70-130			

Origins Laboratory, Inc.



The results in this report apply to the samples analyzed in accordance with the chain of custody document. This analytical report must be reproduced in its entirety.

Eagle Environmental Consulting, LLC
 8000 W 44th Ave
 Wheat Ridge CO 80033

Martin C Eckert III
 Project Number: [none]
 Project: Noble - Shelton RG #26-8

Volatile Organic Compounds by GC/MS SW846 8260D - Quality Control
Origins Laboratory, Inc.

Analyte	Result	Reporting Limit	Units	Spike Level	Source Result	%REC	%REC Limits	RPD	RPD Limit	Notes
---------	--------	-----------------	-------	-------------	---------------	------	-------------	-----	-----------	-------

Batch B3G0718 - EPA 5030 (soil)

Matrix Spike Dup (B3G0718-MSD1)	Source: Y306881-02		Prepared: 07/07/2023 Analyzed: 07/07/2023							
1,2,4-Trimethylbenzene	0.0508	0.00200	mg/kg	0.100	ND	50.8	70-130	55.4	20	QM-07
1,3,5-Trimethylbenzene	0.0629	0.00200	"	0.100	ND	62.9	70-130	43.2	20	QM-07
Benzene	0.0653	0.00200	"	0.100	ND	65.3	70-130	25.4	20	QM-07
Ethylbenzene	0.0683	0.00200	"	0.100	ND	68.3	70-130	39.0	20	QM-07
Naphthalene	0.0634	0.00380	"	0.100	ND	63.4	70-130	36.8	20	QM-07
Toluene	0.0663	0.00200	"	0.100	ND	66.3	70-130	34.4	20	QM-07
o-Xylene	0.0688	0.00200	"	0.100	ND	68.8	70-130	37.4	20	QM-07
m,p-Xylene	0.127	0.00400	"	0.200	ND	63.4	70-130	43.9	20	QM-07
Surrogate: 1,2-Dichloroethane-d4	0.13		"	0.125		103	70-130			
Surrogate: Toluene-d8	0.12		"	0.125		96.4	70-130			
Surrogate: 4-Bromofluorobenzene	0.13		"	0.125		102	70-130			

Origins Laboratory, Inc.



The results in this report apply to the samples analyzed in accordance with the chain of custody document. This analytical report must be reproduced in its entirety.

Eagle Environmental Consulting, LLC
 8000 W 44th Ave
 Wheat Ridge CO 80033

Martin C Eckert III
 Project Number: [none]
 Project: Noble - Shelton RG #26-8

Volatile Organic Compounds by GC/MS SW846 8260D - Quality Control
Origins Laboratory, Inc.

Analyte	Result	Reporting Limit	Units	Spike Level	Source Result	%REC	%REC Limits	RPD	RPD Limit	Notes
---------	--------	-----------------	-------	-------------	---------------	------	-------------	-----	-----------	-------

Metals by EPA 6000/7000 Series Methods - Quality Control
Origins Laboratory, Inc.

Analyte	Result	Reporting Limit	Units	Spike Level	Source Result	%REC	%REC Limits	RPD	RPD Limit	Notes
---------	--------	-----------------	-------	-------------	---------------	------	-------------	-----	-----------	-------

Batch B3G1323 - EPA 3050B

Blank (B3G1323-BLK1)

Prepared: 07/13/2023 Analyzed: 07/14/2023

Arsenic	ND	0.000100	mg/kg							
Barium	ND	0.0100	"							
Cadmium	ND	0.000100	"							
Copper	ND	0.0100	"							
Lead	ND	0.0100	"							
Nickel	ND	0.0100	"							
Selenium	ND	0.000100	"							
Silver	ND	0.000100	"							
Zinc	ND	0.100	"							

LCS (B3G1323-BS1)

Prepared: 07/13/2023 Analyzed: 07/14/2023

Arsenic	0.0477	0.000100	mg/kg	0.0500		95.3	80-120			
Barium	5.08	0.0100	"	5.00		102	80-120			
Cadmium	0.0525	0.000100	"	0.0500		105	80-120			
Copper	0.471	0.0100	"	0.500		94.2	80-120			
Lead	0.0496	0.0100	"	0.0500		99.3	80-120			
Nickel	0.0470	0.0100	"	0.0500		93.9	80-120			
Selenium	0.0476	0.000100	"	0.0500		95.2	80-120			
Silver	0.0481	0.000100	"	0.0500		96.3	80-120			
Zinc	0.460	0.100	"	0.500		92.0	80-120			

Matrix Spike (B3G1323-MS1)

Source: Y307248-01

Prepared: 07/13/2023 Analyzed: 07/14/2023

Origins Laboratory, Inc.



The results in this report apply to the samples analyzed in accordance with the chain of custody document. This analytical report must be reproduced in its entirety.

Eagle Environmental Consulting, LLC
 8000 W 44th Ave
 Wheat Ridge CO 80033

Martin C Eckert III
 Project Number: [none]
 Project: Noble - Shelton RG #26-8

Metals by EPA 6000/7000 Series Methods - Quality Control
Origins Laboratory, Inc.

Analyte	Result	Reporting Limit	Units	Spike Level	Source Result	%REC	%REC Limits	RPD	RPD Limit	Notes
---------	--------	-----------------	-------	-------------	---------------	------	-------------	-----	-----------	-------

Batch B3G1323 - EPA 3050B

Matrix Spike (B3G1323-MS1)		Source: Y307248-01			Prepared: 07/13/2023 Analyzed: 07/14/2023					
Arsenic	7.95	0.0848	mg/kg	4.24	4.46	82.3	75-125			
Barium	524	8.48	"	424	109	97.9	75-125			
Cadmium	4.57	0.0848	"	4.24	0.133	105	75-125			
Copper	52.2	8.48	"	42.4	13.7	90.7	75-125			
Lead	12.0	8.48	"	4.24	8.07	92.9	75-125			
Nickel	13.3	8.48	"	4.24	9.21	95.8	75-125			
Selenium	3.86	0.0848	"	4.24	0.177	86.9	75-125			
Silver	4.09	0.0848	"	4.24	0.0277	95.7	75-125			
Zinc	70.9	84.8	"	42.4	32.9	89.5	75-125			

Matrix Spike Dup (B3G1323-MSD1)		Source: Y307248-01			Prepared: 07/13/2023 Analyzed: 07/14/2023					
Arsenic	8.05	0.0891	mg/kg	4.46	4.46	80.5	75-125	1.24	20	
Barium	533	8.91	"	446	109	95.1	75-125	1.65	20	
Cadmium	4.72	0.0891	"	4.46	0.133	103	75-125	3.29	20	
Copper	53.2	8.91	"	44.6	13.7	88.5	75-125	1.87	20	
Lead	12.2	8.91	"	4.46	8.07	92.2	75-125	1.40	20	
Nickel	13.1	8.91	"	4.46	9.21	86.6	75-125	1.55	20	
Selenium	4.21	0.0891	"	4.46	0.177	90.5	75-125	8.68	20	
Silver	4.24	0.0891	"	4.46	0.0277	94.6	75-125	3.72	20	
Zinc	71.3	89.1	"	44.6	32.9	86.1	75-125	0.587	20	

Origins Laboratory, Inc.



The results in this report apply to the samples analyzed in accordance with the chain of custody document. This analytical report must be reproduced in its entirety.

Eagle Environmental Consulting, LLC
 8000 W 44th Ave
 Wheat Ridge CO 80033

Martin C Eckert III
 Project Number: [none]
 Project: Noble - Shelton RG #26-8

Classical Chemistry Parameters - Quality Control
Origins Laboratory, Inc.

Analyte	Result	Reporting Limit	Units	Spike Level	Source Result	%REC	%REC Limits	RPD	RPD Limit	Notes
---------	--------	-----------------	-------	-------------	---------------	------	-------------	-----	-----------	-------

Batch B3G0505 - Saturated Paste Metals

Blank (B3G0505-BLK1)

Prepared: 07/05/2023 Analyzed: 07/06/2023

Calcium PPM	ND	10.0	mg/L							
SAR	0.00		SAR							
Magnesium PPM	ND	10.0	mg/L							
Sodium PPM	ND	10.0	"							

Duplicate (B3G0505-DUP1)

Source: Y306882-04

Prepared: 07/05/2023 Analyzed: 07/06/2023

SAR	0.00		SAR		0.383			200	200	
Calcium PPM	24.4	10.0	mg/L		23.1			5.48	50	
Magnesium PPM	2.51	10.0	"		2.45			2.42	50	
Sodium PPM	7.97	10.0	"		7.24			9.60	50	

Batch B3G0611 - DTPA Sorbitol Preparation

Blank (B3G0611-BLK1)

Prepared: 07/06/2023 Analyzed: 07/07/2023

Boron	ND	0.100	mg/L							
-------	----	-------	------	--	--	--	--	--	--	--

Duplicate (B3G0611-DUP1)

Source: Y306883-01

Prepared: 07/06/2023 Analyzed: 07/07/2023

Boron	1.76	0.0985	mg/L		1.66			5.62	50	
-------	------	--------	------	--	------	--	--	------	----	--

Batch B3G1310 - Saturated Paste Metals

Blank (B3G1310-BLK1)

Prepared: 07/13/2023 Analyzed: 07/14/2023

SAR	0.00		SAR							
Calcium PPM	ND	10.0	mg/L							
Magnesium PPM	ND	10.0	"							
Sodium PPM	ND	10.0	"							

Origins Laboratory, Inc.



The results in this report apply to the samples analyzed in accordance with the chain of custody document. This analytical report must be reproduced in its entirety.

Eagle Environmental Consulting, LLC
 8000 W 44th Ave
 Wheat Ridge CO 80033

Martin C Eckert III
 Project Number: [none]
 Project: Noble - Shelton RG #26-8

Classical Chemistry Parameters - Quality Control
Origins Laboratory, Inc.

Analyte	Result	Reporting Limit	Units	Spike Level	Source Result	%REC	%REC Limits	RPD	RPD Limit	Notes
---------	--------	-----------------	-------	-------------	---------------	------	-------------	-----	-----------	-------

Batch B3G1310 - Saturated Paste Metals

Duplicate (B3G1310-DUP1)	Source: Y307231-01			Prepared: 07/13/2023 Analyzed: 07/14/2023						
Calcium PPM	4.63	10.0	mg/L		6.02			26.1	50	
SAR	0.00		SAR		0.0806			200	200	
Magnesium PPM	1.75	10.0	mg/L		1.96			11.3	50	
Sodium PPM	1.39	10.0	"		0.890			43.9	50	

Origins Laboratory, Inc.



The results in this report apply to the samples analyzed in accordance with the chain of custody document. This analytical report must be reproduced in its entirety.

Eagle Environmental Consulting, LLC
 8000 W 44th Ave
 Wheat Ridge CO 80033

Martin C Eckert III
 Project Number: [none]
 Project: Noble - Shelton RG #26-8

Saturated Paste - Quality Control
Origins Laboratory, Inc.

Analyte	Result	Reporting Limit	Units	Spike Level	Source Result	%REC	%REC Limits	RPD	RPD Limit	Notes
Batch B3G0513 - Saturated Paste pH/EC										
Blank (B3G0513-BLK1)					Prepared: 07/05/2023 Analyzed: 07/06/2023					
Specific Conductance (EC)	ND	0.00500	mmhos/cm							
Duplicate (B3G0513-DUP1)					Source: Y306882-04 Prepared: 07/05/2023 Analyzed: 07/06/2023					
pH	8.26		pH Units		8.30			0.483	25	
Specific Conductance (EC)	0.226	0.00500	mmhos/cm		0.211			6.92	25	
Batch B3G1215 - Saturated Paste pH/EC										
Duplicate (B3G1215-DUP1)					Source: Y306807-03RE1 Prepared: 07/12/2023 Analyzed: 07/13/2023					
pH	8.02		pH Units		7.46			7.24	25	
Batch B3G1316 - Saturated Paste pH/EC										
Duplicate (B3G1316-DUP1)					Source: Y307231-01 Prepared: 07/13/2023 Analyzed: 07/14/2023					
pH	7.62		pH Units		7.54			1.06	25	

Origins Laboratory, Inc.



The results in this report apply to the samples analyzed in accordance with the chain of custody document. This analytical report must be reproduced in its entirety.

Eagle Environmental Consulting, LLC
 8000 W 44th Ave
 Wheat Ridge CO 80033

Martin C Eckert III
 Project Number: [none]
 Project: Noble - Shelton RG #26-8

Total Metals by 7196A - Quality Control
Waypoint Analytical, LLC.

Analyte	Result	Reporting Limit	Units	Spike Level	Source Result	%REC	%REC Limits	RPD	RPD Limit	Notes
Batch L693395 -										
DUP (L 99815-DUP)		Source: 99815			Prepared: Analyzed: 07/18/2023					
Chromium, Hexavalent	ND	0.503	mg/Kg		<0.503		-	0	20	
MS (L 99815-MS)		Source: 99815			Prepared: Analyzed: 07/18/2023					
Chromium, Hexavalent	33.2	2.54	mg/Kg	40.6	<1.24	82	75-125			
LCS (LCS)		Prepared: Analyzed: 07/18/2023								
Chromium, Hexavalent	6.91	0.5	mg/Kg	8		86	75-125			
LRB (LRB)		Prepared: Analyzed: 07/18/2023								
Chromium, Hexavalent	ND	0.5	mg/Kg				-			

Origins Laboratory, Inc.



The results in this report apply to the samples analyzed in accordance with the chain of custody document. This analytical report must be reproduced in its entirety.

Eagle Environmental Consulting, LLC
 8000 W 44th Ave
 Wheat Ridge CO 80033

Martin C Eckert III
 Project Number: [none]
 Project: Noble - Shelton RG #26-8

PAH by 8270D SIM - Quality Control
Waypoint Analytical, LLC.

Analyte	Result	Reporting Limit	Units	Spike Level	Source Result	%REC	%REC Limits	RPD	RPD Limit	Notes
---------	--------	-----------------	-------	-------------	---------------	------	-------------	-----	-----------	-------

Batch L691600 - 3550B

MSD (L 96722-MSD-L691600)		Source: 96722			Prepared: 07/08/2023 Analyzed: 07/10/2023					
Benzo(b)fluoranthene	0.0743	0.00067	mg/Kg	0.164	<0.000585	45.3	30-130	34.2	30	*
Dibenz(a,h)anthracene	0.172	0.00067	"	0.164	<0.000614	105	30-130	12	30	
Pyrene	0.116	0.00067	"	0.164	<0.000643	70.7	30-130	0	30	
Indeno(1,2,3-cd)pyrene	0.121	0.00067	"	0.164	<0.000627	73.7	30-130	19.4	30	
Fluoranthene	0.116	0.00067	"	0.164	<0.000394	70.7	30-130	0.8	30	
Chrysene	0.129	0.00067	"	0.164	<0.000624	78.6	30-130	2.3	30	
Benzo(k)fluoranthene	0.0877	0.00067	"	0.164	<0.000437	53.4	30-130	24.3	30	
1-Methylnaphthalene	0.108	0.00201	"	0.164	<0.00109	65.8	30-130	4.5	30	
2-Methylnaphthalene	0.11	0.00201	"	0.164	<0.00194	67	30-130	1.8	30	
Fluorene	0.122	0.00067	"	0.164	<0.000286	74.3	30-130	5.9	30	
Benzo(a)pyrene	0.133	0.00067	"	0.164	<0.000468	81	30-130	3	30	
Acenaphthene	0.118	0.00067	"	0.164	<0.000304	71.9	30-130	1.6	30	
Anthracene	0.118	0.00067	"	0.164	<0.000334	71.9	30-130	9.6	30	
Benzo(a)anthracene	0.107	0.00067	"	0.164	<0.000493	65.2	30-130	7.2	30	
Surrogate: Nitrobenzene-d5	51.9		"	0.329	175	51.9	29-110			
Surrogate: 2-Fluorobiphenyl	54.7		"	0.329	185	54.7	33-115			
Surrogate: 4-Terphenyl-d14	56.2		"	0.329	201	56.2	33-122			

MS (L 96722-MS-L691600)		Source: 96722			Prepared: 07/08/2023 Analyzed: 07/10/2023					
Benzo(b)fluoranthene	0.105	0.00067	mg/Kg	0.164	<0.000585	64	30-130			
Indeno(1,2,3-cd)pyrene	0.147	0.00067	"	0.164	<0.000627	89.6	30-130			
Fluorene	0.115	0.00067	"	0.164	<0.000286	70.1	30-130			
Fluoranthene	0.117	0.00067	"	0.164	<0.000394	71.3	30-130			
Dibenz(a,h)anthracene	0.194	0.00067	"	0.164	<0.000614	118	30-130			
Chrysene	0.126	0.00067	"	0.164	<0.000624	76.8	30-130			
Benzo(k)fluoranthene	0.112	0.00067	"	0.164	<0.000437	68.2	30-130			
1-Methylnaphthalene	0.113	0.00201	"	0.164	<0.00109	68.9	30-130			

Origins Laboratory, Inc.



The results in this report apply to the samples analyzed in accordance with the chain of custody document. This analytical report must be reproduced in its entirety.

Eagle Environmental Consulting, LLC
 8000 W 44th Ave
 Wheat Ridge CO 80033

Martin C Eckert III
 Project Number: [none]
 Project: Noble - Shelton RG #26-8

PAH by 8270D SIM - Quality Control
Waypoint Analytical, LLC.

Analyte	Result	Reporting Limit	Units	Spike Level	Source Result	%REC	%REC Limits	RPD	RPD Limit	Notes
---------	--------	-----------------	-------	-------------	---------------	------	-------------	-----	-----------	-------

Batch L691600 - 3550B

MS (L 96722-MS-L691600)		Source: 96722			Prepared: 07/08/2023 Analyzed: 07/10/2023					
Benzo(a)anthracene	0.115	0.00067	mg/Kg	0.164	<0.000493	70.1	30-130			
Acenaphthene	0.12	0.00067	"	0.164	<0.000304	73.1	30-130			
Pyrene	0.116	0.00067	"	0.164	<0.000643	70.7	30-130			
2-Methylnaphthalene	0.112	0.00201	"	0.164	<0.00194	68.2	30-130			
Benzo(a)pyrene	0.129	0.00067	"	0.164	<0.000468	78.6	30-130			
Anthracene	0.13	0.00067	"	0.164	<0.000334	79.2	30-130			
Surrogate: 4-Terphenyl-d14	56.4		"	0.328	201	56.4	33-122			
Surrogate: Nitrobenzene-d5	52.7		"	0.328	175	52.7	29-110			
Surrogate: 2-Fluorobiphenyl	57		"	0.328	185	57	33-115			

LCS (LCS-L691600)		Prepared: 07/08/2023 Analyzed: 07/10/2023								
Benzo(k)fluoranthene	0.115	0.00067	mg/Kg	0.167		68.8	30-130			
Chrysene	0.126	0.00067	"	0.167		75.4	30-130			
Dibenz(a,h)anthracene	0.109	0.00067	"	0.167		65.2	30-130			
Fluoranthene	0.133	0.00067	"	0.167		79.6	30-130			
Fluorene	0.13	0.00067	"	0.167		77.8	30-130			
Pyrene	0.135	0.00067	"	0.167		80.8	30-130			
Benzo(b)fluoranthene	0.114	0.00067	"	0.167		68.2	30-130			
Indeno(1,2,3-cd)pyrene	0.0774	0.00067	"	0.167		46.3	30-130			
Benzo(a)anthracene	0.116	0.00067	"	0.167		69.4	30-130			
Anthracene	0.123	0.00067	"	0.167		73.6	30-130			
Acenaphthene	0.117	0.00067	"	0.167		70	30-130			
2-Methylnaphthalene	0.11	0.00201	"	0.167		65.8	30-130			
1-Methylnaphthalene	0.113	0.00201	"	0.167		67.6	30-130			
Benzo(a)pyrene	0.134	0.00067	"	0.167		80.2	30-130			
Surrogate: Nitrobenzene-d5	63		"	0.333		63	29-110			
Surrogate: 4-Terphenyl-d14	76.8		"	0.333		76.8	33-122			

Origins Laboratory, Inc.



The results in this report apply to the samples analyzed in accordance with the chain of custody document. This analytical report must be reproduced in its entirety.

Eagle Environmental Consulting, LLC
 8000 W 44th Ave
 Wheat Ridge CO 80033

Martin C Eckert III
 Project Number: [none]
 Project: Noble - Shelton RG #26-8

PAH by 8270D SIM - Quality Control
Waypoint Analytical, LLC.

Analyte	Result	Reporting Limit	Units	Spike Level	Source Result	%REC	%REC Limits	RPD	RPD Limit	Notes
Batch L691600 - 3550B										
LCS (LCS-L691600)										
					Prepared: 07/08/2023 Analyzed: 07/10/2023					
Surrogate: 2-Fluorobiphenyl	62.7		mg/Kg	0.333		62.7	33-115			
LRB (LRB-L691600)										
					Prepared: 07/08/2023 Analyzed: 07/10/2023					
Benzo(k)fluoranthene	ND	0.00067	mg/Kg				-			
Chrysene	ND	0.00067	"				-			
Dibenz(a,h)anthracene	ND	0.00067	"				-			
Fluoranthene	ND	0.00067	"				-			
Benzo(b)fluoranthene	ND	0.00067	"				-			
Indeno(1,2,3-cd)pyrene	ND	0.00067	"				-			
Fluorene	ND	0.00067	"				-			
Benzo(a)pyrene	ND	0.00067	"				-			
Benzo(a)anthracene	ND	0.00067	"				-			
Acenaphthene	ND	0.00067	"				-			
2-Methylnaphthalene	ND	0.00201	"				-			
1-Methylnaphthalene	ND	0.00201	"				-			
Pyrene	ND	0.00067	"				-			
Anthracene	ND	0.00067	"				-			
Surrogate: Nitrobenzene-d5	55.2		"	0.333		55.2	29-110			
Surrogate: 4-Terphenyl-d14	68.4		"	0.333		68.4	33-122			
Surrogate: 2-Fluorobiphenyl	66		"	0.333		66	33-115			

Origins Laboratory, Inc.



The results in this report apply to the samples analyzed in accordance with the chain of custody document. This analytical report must be reproduced in its entirety.

Eagle Environmental Consulting, LLC
 8000 W 44th Ave
 Wheat Ridge CO 80033

Martin C Eckert III
 Project Number: [none]
 Project: Noble - Shelton RG #26-8

PAH by 8270D SIM - Quality Control
Waypoint Analytical, LLC.

Analyte	Result	Reporting Limit	Units	Spike Level	Source Result	%REC	%REC Limits	RPD	RPD Limit	Notes
---------	--------	-----------------	-------	-------------	---------------	------	-------------	-----	-----------	-------

Batch L691488 - 3550B

MSD (L 96424-MSD-L691488)		Source: 96424			Prepared: 07/07/2023 Analyzed: 07/10/2023					
Benzo(k)fluoranthene	0.0755	0.00067	mg/Kg	0.164	<0.000437	46	30-130	12.1	30	
Fluorene	0.122	0.00067	"	0.164	0.00079	73.9	30-130	2.4	30	
1-Methylnaphthalene	0.103	0.00201	"	0.164	<0.00109	62.8	30-130	0.9	30	
Benzo(a)pyrene	0.122	0.00067	"	0.164	<0.000468	74.3	30-130	4.1	30	
Pyrene	0.118	0.00067	"	0.164	<0.000643	71.9	30-130	8.1	30	
Indeno(1,2,3-cd)pyrene	0.101	0.00067	"	0.164	<0.000627	61.5	30-130	10.6	30	
Fluoranthene	0.119	0.00067	"	0.164	<0.000394	72.5	30-130	7.2	30	
Dibenz(a,h)anthracene	0.132	0.00067	"	0.164	<0.000614	80.4	30-130	0.7	30	
Chrysene	0.115	0.00067	"	0.164	<0.000624	70.1	30-130	0	30	
2-Methylnaphthalene	0.103	0.00201	"	0.164	<0.00194	62.8	30-130	0	30	
Benzo(b)fluoranthene	0.0797	0.00067	"	0.164	<0.000585	48.5	30-130	16.1	30	
Acenaphthene	0.114	0.00067	"	0.164	<0.000304	69.5	30-130	1.7	30	
Anthracene	0.119	0.00067	"	0.164	<0.000334	72.5	30-130	6	30	
Benzo(a)anthracene	0.116	0.00067	"	0.164	<0.000493	70.7	30-130	5.3	30	
Surrogate: Nitrobenzene-d5	47.4		"	0.329	162	47.4	29-110			
Surrogate: 2-Fluorobiphenyl	55.6		"	0.329	166	55.6	33-115			
Surrogate: 4-Terphenyl-d14	56.5		"	0.329	179	56.5	33-122			

MS (L 96424-MS-L691488)		Source: 96424			Prepared: 07/07/2023 Analyzed: 07/10/2023					
Chrysene	0.115	0.00067	mg/Kg	0.164	<0.000624	70.1	30-130			
Acenaphthene	0.112	0.00067	"	0.164	<0.000304	68.2	30-130			
Indeno(1,2,3-cd)pyrene	0.0908	0.00067	"	0.164	<0.000627	55.3	30-130			
Fluorene	0.125	0.00067	"	0.164	0.00079	75.7	30-130			
Fluoranthene	0.128	0.00067	"	0.164	<0.000394	78	30-130			
Dibenz(a,h)anthracene	0.131	0.00067	"	0.164	<0.000614	79.8	30-130			
Pyrene	0.128	0.00067	"	0.164	<0.000643	78	30-130			
2-Methylnaphthalene	0.103	0.00201	"	0.164	<0.00194	62.8	30-130			

Origins Laboratory, Inc.



The results in this report apply to the samples analyzed in accordance with the chain of custody document. This analytical report must be reproduced in its entirety.

Eagle Environmental Consulting, LLC
 8000 W 44th Ave
 Wheat Ridge CO 80033

Martin C Eckert III
 Project Number: [none]
 Project: Noble - Shelton RG #26-8

PAH by 8270D SIM - Quality Control
Waypoint Analytical, LLC.

Analyte	Result	Reporting Limit	Units	Spike Level	Source Result	%REC	%REC Limits	RPD	RPD Limit	Notes
---------	--------	-----------------	-------	-------------	---------------	------	-------------	-----	-----------	-------

Batch L691488 - 3550B

MS (L 96424-MS-L691488)	Source: 96424			Prepared: 07/07/2023 Analyzed: 07/10/2023						
1-Methylnaphthalene	0.104	0.00201	mg/Kg	0.164	<0.00109	63.4	30-130			
Benzo(a)anthracene	0.11	0.00067	"	0.164	<0.000493	67	30-130			
Benzo(k)fluoranthene	0.0853	0.00067	"	0.164	<0.000437	52	30-130			
Anthracene	0.112	0.00067	"	0.164	<0.000334	68.2	30-130			
Benzo(a)pyrene	0.117	0.00067	"	0.164	<0.000468	71.3	30-130			
Benzo(b)fluoranthene	0.0678	0.00067	"	0.164	<0.000585	41.3	30-130			
<i>Surrogate: Nitrobenzene-d5</i>	47.2		"	0.328	162	47.2	29-110			
<i>Surrogate: 2-Fluorobiphenyl</i>	52.1		"	0.328	166	52.1	33-115			
<i>Surrogate: 4-Terphenyl-d14</i>	62.5		"	0.328	179	62.5	33-122			

LCS (LCS-L691488)				Prepared: 07/07/2023 Analyzed: 07/10/2023						
1-Methylnaphthalene	0.0852	0.00201	mg/Kg	0.167		51	30-130			
Chrysene	0.112	0.00067	"	0.167		67	30-130			
Indeno(1,2,3-cd)pyrene	0.0985	0.00067	"	0.167		58.9	30-130			
Fluorene	0.105	0.00067	"	0.167		62.8	30-130			
Fluoranthene	0.125	0.00067	"	0.167		74.8	30-130			
Dibenz(a,h)anthracene	0.138	0.00067	"	0.167		82.6	30-130			
Pyrene	0.126	0.00067	"	0.167		75.4	30-130			
Benzo(b)fluoranthene	0.0689	0.00067	"	0.167		41.2	30-130			
Benzo(a)pyrene	0.116	0.00067	"	0.167		69.4	30-130			
Benzo(a)anthracene	0.102	0.00067	"	0.167		61	30-130			
Anthracene	0.122	0.00067	"	0.167		73	30-130			
Acenaphthene	0.1	0.00067	"	0.167		59.8	30-130			
2-Methylnaphthalene	0.0899	0.00201	"	0.167		53.8	30-130			
Benzo(k)fluoranthene	0.0829	0.00067	"	0.167		49.6	30-130			
<i>Surrogate: Nitrobenzene-d5</i>	46.8		"	0.333		46.8	29-110			
<i>Surrogate: 2-Fluorobiphenyl</i>	46.8		"	0.333		46.8	33-115			

Origins Laboratory, Inc.



The results in this report apply to the samples analyzed in accordance with the chain of custody document. This analytical report must be reproduced in its entirety.

Eagle Environmental Consulting, LLC
 8000 W 44th Ave
 Wheat Ridge CO 80033

Martin C Eckert III
 Project Number: [none]
 Project: Noble - Shelton RG #26-8

PAH by 8270D SIM - Quality Control
Waypoint Analytical, LLC.

Analyte	Result	Reporting Limit	Units	Spike Level	Source Result	%REC	%REC Limits	RPD	RPD Limit	Notes
Batch L691488 - 3550B										
LCS (LCS-L691488)										
					Prepared: 07/07/2023 Analyzed: 07/10/2023					
Surrogate: 4-Terphenyl-d14	66.6		mg/Kg	0.333		66.6	33-122			
LRB (LRB-L691488)										
					Prepared: 07/07/2023 Analyzed: 07/10/2023					
Dibenz(a,h)anthracene	ND	0.00067	mg/Kg				-			
Fluoranthene	ND	0.00067	"				-			
Fluorene	ND	0.00067	"				-			
Indeno(1,2,3-cd)pyrene	ND	0.00067	"				-			
Chrysene	ND	0.00067	"				-			
Pyrene	ND	0.00067	"				-			
Acenaphthene	ND	0.00067	"				-			
Benzo(k)fluoranthene	ND	0.00067	"				-			
Benzo(b)fluoranthene	ND	0.00067	"				-			
Benzo(a)pyrene	ND	0.00067	"				-			
Anthracene	ND	0.00067	"				-			
2-Methylnaphthalene	ND	0.00201	"				-			
1-Methylnaphthalene	ND	0.00201	"				-			
Benzo(a)anthracene	ND	0.00067	"				-			
Surrogate: Nitrobenzene-d5	46.2		"	0.333		46.2	29-110			
Surrogate: 4-Terphenyl-d14	70.8		"	0.333		70.8	33-122			
Surrogate: 2-Fluorobiphenyl	51		"	0.333		51	33-115			

Origins Laboratory, Inc.



The results in this report apply to the samples analyzed in accordance with the chain of custody document. This analytical report must be reproduced in its entirety.

Eagle Environmental Consulting, LLC
8000 W 44th Ave
Wheat Ridge CO 80033

Martin C Eckert III
Project Number: [none]
Project: Noble - Shelton RG #26-8

Notes and Definitions

U Sample is Non-Detect.

QM-07 The spike recovery was outside acceptance limits for the MS and/or MSD. The batch was accepted based on acceptable LCS recovery.

J Estimated Value. Analyte below reported quantitation limit.

* QC Failure

ND Analyte NOT DETECTED at or above the reporting limit

RPD Relative Percent Difference

All soil results are reported on a wet weight basis.

Calculated results may use J-flag data (instead of reported "ND") as part of calculation to provide a more accurate result.

Origins Laboratory, Inc.



The results in this report apply to the samples analyzed in accordance with the chain of custody document. This analytical report must be reproduced in its entirety.

Jordan A. Bynon, Project Manager



July 13, 2023

Eagle Environmental Consulting, LLC

Martin C Eckert III

8000 W 44th Ave

Wheat Ridge CO 80033

Project Name - Noble - Shelton RG #26-8

Project Number - [none]

Attached are your analytical results for Noble - Shelton RG #26-8 received by Origins Laboratory, Inc. June 30, 2023. This project is associated with Origins project number Y306890-01.

The analytical results in the following report were analyzed under the guidelines of EPA Methods. These methods are identified as follows; "SW" are defined in SW-846, "EPA" are defined in 40CFR part 136 and "SM" are defined in the most current revision of Standard Methods For the Examination of Water and Wastewater.

The analytical results apply specifically to the samples and analyses specified per the attached Chain of Custody. As such, this report shall not be reproduced except in full, without the written approval of Origin's laboratory.

Unless otherwise noted, the analytical results for all soil samples are reported on a wet weight basis. All analytical analyses were performed under NELAP guidelines unless noted by a data qualifier.

Any holding time exceedances, deviations from the method specifications or deviations from Origins Laboratory's Standard Operating Procedures are outlined in the case narrative.

Thank you for selecting Origins for your analytical needs. Please contact us with any questions concerning this report, or if we can help with anything at all.

Origins Laboratory, Inc.
303.433.1322
o-squad@oelabinc.com



1725 Elk Place, Denver, CO 80211 | Phone: 303.433.1322 | Fax: 303.265.9645

Eagle Environmental Consulting, LLC
8000 W 44th Ave
Wheat Ridge CO 80033

Martin C Eckert III
Project Number: [none]
Project: Noble - Shelton RG #26-8

CROSS REFERENCE REPORT

Sample ID	Laboratory ID	Matrix	Date Sampled	Date Received
GW-01	Y306890-01	Water	June 30, 2023 7:58	06/30/2023 14:50

Origins Laboratory, Inc.



The results in this report apply to the samples analyzed in accordance with the chain of custody document. This analytical report must be reproduced in its entirety.

Eagle Environmental Consulting, LLC
 8000 W 44th Ave
 Wheat Ridge CO 80033

Martin C Eckert III
 Project Number: [none]
 Project: Noble - Shelton RG #26-8

Origins Laboratory

F-012207-01-R1
 Effective Date: 01/09/12

Sample Receipt Checklist

Origins Work Order: YB06890

Client: Eagle

Client Project ID: Shelton RG 26-8

Checklist Completed by: TJM

Shipped Via: HD

(UPS, FedEx, Hand Delivered, Pick-up, etc.)

Date/time completed: 7/13/23

Airbill #: N/A

Matrix(s) Received: (Check all that apply): Soil/Solid Water Other: _____

Cooler Number/Temperature: 1, 4 °C / _____ °C / _____ °C (Describe) _____ °C

Thermometer ID: T004

Requirement Description	Yes	No	N/A	Comments (if any)
If samples require cooling, was the temperature between 0°C to ≤ 6°C ⁽¹⁾ ?	/			
Is there ice present (document if blue ice is used)	/			
Are custody seals present on cooler? (if so, document in comments if they are signed and dated, broken or intact)		/		
Are custody seals present on each sample container? (if so, document in comments if they are signed and dated, broken or intact)		/		
Were all samples received intact ⁽¹⁾ ?	/			
Was adequate sample volume provided ⁽¹⁾ ?	/			
Are short holding time analytes or samples with HTs due within 48 hours present ⁽¹⁾ ?		/		
Is a chain-of-custody (COC) present and filled out completely ⁽¹⁾ ?	/			
Does the COC agree with the number and type of sample bottles received ⁽¹⁾ ?	/			
Do the sample IDs on the bottle labels match the COC ⁽¹⁾ ?	/			
Is the COC properly relinquished by the client with date and time recorded ⁽¹⁾ ?	/			
For volatiles in water – is there headspace (> ¼ inch bubble) present? If yes, contact client and note in narrative.		/		
Are samples preserved that require preservation and was it checked ⁽¹⁾ ? (note ID of confirmation instrument used in comments) / (preservation is not confirmed for subcontracted analyses in order to insure sample integrity)/(pH <2 for samples preserved with HNO ₃ , HCL, H ₂ SO ₄) / (pH >10 for samples preserved with NaAsO ₂ +NaOH, ZnAc+NaOH)	/			NY
Additional Comments (if any):				

⁽¹⁾If NO, then contact the client before proceeding with analysis and note date/time and person contacted as well as the corrective action to in the additional comments (above) and the case narrative.

TJM
 Reviewed by (Project Manager)

7-13-23
 Date/Time Reviewed

Origins Laboratory, Inc.

J. Bynon

The results in this report apply to the samples analyzed in accordance with the chain of custody document. This analytical report must be reproduced in its entirety.

Eagle Environmental Consulting, LLC
 8000 W 44th Ave
 Wheat Ridge CO 80033

Martin C Eckert III
 Project Number: [none]
 Project: Noble - Shelton RG #26-8

GW-01
6/30/2023 7:58:00AM

Analyte	Result	Reporting Limit	Units	Dilution	Batch	Analyst	Prepared	Analyzed	Notes
---------	--------	-----------------	-------	----------	-------	---------	----------	----------	-------

Origins Laboratory, Inc.
Y306890-01 (Water)

BTEX+N+TMBs by 8260D

1,2,4-Trimethylbenzene	36.3	2.00	ug/L	1	B3F3039	JSM	06/30/2023	07/06/2023	
1,3,5-Trimethylbenzene	22.8	2.00	"	"	"	JSM	"	"	
Benzene	21.9	1.00	"	"	"	JSM	"	"	
Ethylbenzene	23.1	1.00	"	"	"	JSM	"	"	
Naphthalene	ND	2.00	"	"	"	JSM	"	"	U
Toluene	102	1.00	"	"	"	JSM	"	"	
Xylenes, total	316	1.00	"	"	"	JSM	"	"	

Surrogate: 1,2-Dichloroethane-d4	102 %	70-130			"	"	"	"	
Surrogate: Toluene-d8	102 %	70-130			"	"	"	"	
Surrogate: 4-Bromofluorobenzene	108 %	70-130			"	"	"	"	

Origins Laboratory, Inc.



The results in this report apply to the samples analyzed in accordance with the chain of custody document. This analytical report must be reproduced in its entirety.

Eagle Environmental Consulting, LLC
 8000 W 44th Ave
 Wheat Ridge CO 80033

Martin C Eckert III
 Project Number: [none]
 Project: Noble - Shelton RG #26-8

Volatile Organic Compounds by GC/MS SW846 8260D - Quality Control
Origins Laboratory, Inc.

Analyte	Result	Reporting Limit	Units	Spike Level	Source Result	%REC	%REC Limits	RPD	RPD Limit	Notes
---------	--------	-----------------	-------	-------------	---------------	------	-------------	-----	-----------	-------

Batch B3F3039 - EPA 5030B (Water)

Blank (B3F3039-BLK1)

Prepared: 06/30/2023 Analyzed: 07/06/2023

1,2,4-Trimethylbenzene	ND	2.00	ug/L							U
1,3,5-Trimethylbenzene	ND	2.00	"							U
Benzene	ND	1.00	"							U
Ethylbenzene	ND	1.00	"							U
Naphthalene	ND	2.00	"							U
Toluene	ND	1.00	"							U
Xylenes, total	ND	1.00	"							U
Surrogate: 1,2-Dichloroethane-d4	65		"	62.5	105		70-130			
Surrogate: Toluene-d8	62		"	62.5	100		70-130			
Surrogate: 4-Bromofluorobenzene	61		"	62.5	97.1		70-130			

Origins Laboratory, Inc.



The results in this report apply to the samples analyzed in accordance with the chain of custody document. This analytical report must be reproduced in its entirety.

Eagle Environmental Consulting, LLC
 8000 W 44th Ave
 Wheat Ridge CO 80033

Martin C Eckert III
 Project Number: [none]
 Project: Noble - Shelton RG #26-8

Volatile Organic Compounds by GC/MS SW846 8260D - Quality Control
Origins Laboratory, Inc.

Analyte	Result	Reporting Limit	Units	Spike Level	Source Result	%REC	%REC Limits	RPD	RPD Limit	Notes
---------	--------	-----------------	-------	-------------	---------------	------	-------------	-----	-----------	-------

Batch B3F3039 - EPA 5030B (Water)

LCS (B3F3039-BS1)

Prepared: 06/30/2023 Analyzed: 07/06/2023

1,2,4-Trimethylbenzene	49.5	2.00	ug/L	50.0		99.0	70-130			
1,3,5-Trimethylbenzene	52.2	2.00	"	50.0		104	70-130			
Benzene	47.5	1.00	"	50.0		94.9	70-130			
Ethylbenzene	52.7	1.00	"	50.0		105	70-130			
m,p-Xylene	107	2.00	"	100		107	70-130			
Naphthalene	44.6	2.00	"	50.0		89.1	70-130			
o-Xylene	50.9	1.00	"	50.0		102	70-130			
Toluene	47.9	1.00	"	50.0		95.8	70-130			
Surrogate: 1,2-Dichloroethane-d4	63		"	62.5		101	70-130			
Surrogate: Toluene-d8	61		"	62.5		97.5	70-130			
Surrogate: 4-Bromofluorobenzene	64		"	62.5		102	70-130			

Origins Laboratory, Inc.



The results in this report apply to the samples analyzed in accordance with the chain of custody document. This analytical report must be reproduced in its entirety.

Eagle Environmental Consulting, LLC
 8000 W 44th Ave
 Wheat Ridge CO 80033

Martin C Eckert III
 Project Number: [none]
 Project: Noble - Shelton RG #26-8

Volatile Organic Compounds by GC/MS SW846 8260D - Quality Control
Origins Laboratory, Inc.

Analyte	Result	Reporting Limit	Units	Spike Level	Source Result	%REC	%REC Limits	RPD	RPD Limit	Notes
---------	--------	-----------------	-------	-------------	---------------	------	-------------	-----	-----------	-------

Batch B3F3039 - EPA 5030B (Water)

Matrix Spike (B3F3039-MS1)	Source: Y306870-01			Prepared: 06/30/2023 Analyzed: 07/06/2023						
1,2,4-Trimethylbenzene	48.6	2.00	ug/L	50.0	ND	97.1	70-130			
1,3,5-Trimethylbenzene	51.6	2.00	"	50.0	ND	103	70-130			
Benzene	49.8	1.00	"	50.0	ND	99.6	70-130			
Ethylbenzene	53.2	1.00	"	50.0	ND	106	70-130			
m,p-Xylene	104	2.00	"	100	ND	104	70-130			
Naphthalene	40.1	2.00	"	50.0	ND	80.1	70-130			
o-Xylene	46.8	1.00	"	50.0	ND	93.7	70-130			
Toluene	50.0	1.00	"	50.0	ND	99.9	70-130			
Surrogate: 1,2-Dichloroethane-d4	62		"	62.5		99.2	70-130			
Surrogate: Toluene-d8	60		"	62.5		96.7	70-130			
Surrogate: 4-Bromofluorobenzene	64		"	62.5		102	70-130			

Origins Laboratory, Inc.



The results in this report apply to the samples analyzed in accordance with the chain of custody document. This analytical report must be reproduced in its entirety.

Eagle Environmental Consulting, LLC
 8000 W 44th Ave
 Wheat Ridge CO 80033

Martin C Eckert III
 Project Number: [none]
 Project: Noble - Shelton RG #26-8

Volatile Organic Compounds by GC/MS SW846 8260D - Quality Control
Origins Laboratory, Inc.

Analyte	Result	Reporting Limit	Units	Spike Level	Source Result	%REC	%REC Limits	RPD	RPD Limit	Notes
---------	--------	-----------------	-------	-------------	---------------	------	-------------	-----	-----------	-------

Batch B3F3039 - EPA 5030B (Water)

Matrix Spike Dup (B3F3039-MSD1)	Source: Y306870-01			Prepared: 06/30/2023 Analyzed: 07/06/2023						
1,2,4-Trimethylbenzene	52.0	2.00	ug/L	50.0	ND	104	70-130	6.78	20	
1,3,5-Trimethylbenzene	55.6	2.00	"	50.0	ND	111	70-130	7.44	20	
Benzene	52.1	1.00	"	50.0	ND	104	70-130	4.61	20	
Ethylbenzene	57.0	1.00	"	50.0	ND	114	70-130	7.01	20	
m,p-Xylene	109	2.00	"	100	ND	109	70-130	4.66	20	
Naphthalene	42.4	2.00	"	50.0	ND	84.8	70-130	5.72	20	
o-Xylene	49.0	1.00	"	50.0	ND	97.9	70-130	4.43	20	
Toluene	53.0	1.00	"	50.0	ND	106	70-130	5.87	20	
Surrogate: 1,2-Dichloroethane-d4	62		"	62.5		99.3	70-130			
Surrogate: Toluene-d8	61		"	62.5		98.0	70-130			
Surrogate: 4-Bromofluorobenzene	65		"	62.5		105	70-130			

Origins Laboratory, Inc.



The results in this report apply to the samples analyzed in accordance with the chain of custody document. This analytical report must be reproduced in its entirety.

Eagle Environmental Consulting, LLC
8000 W 44th Ave
Wheat Ridge CO 80033

Martin C Eckert III
Project Number: [none]
Project: Noble - Shelton RG #26-8

Notes and Definitions

U Sample is Non-Detect.

ND Analyte NOT DETECTED at or above the reporting limit

RPD Relative Percent Difference

All soil results are reported at a wet weight basis.

Origins Laboratory, Inc.



The results in this report apply to the samples analyzed in accordance with the chain of custody document. This analytical report must be reproduced in its entirety.

Jordan A. Bynon, Project Manager



July 20, 2023

Eagle Environmental Consulting, LLC

Martin C Eckert III

8000 W 44th Ave

Wheat Ridge CO 80033

Project Name - Noble - Shelton RG #26-8

Project Number - [none]

Attached are your analytical results for Noble - Shelton RG #26-8 received by Origins Laboratory, Inc. July 12, 2023. This project is associated with Origins project number Y307260-01.

The analytical results in the following report were analyzed under the guidelines of EPA Methods. These methods are identified as follows; "SW" are defined in SW-846, "EPA" are defined in 40CFR part 136 and "SM" are defined in the most current revision of Standard Methods For the Examination of Water and Wastewater.

The analytical results apply specifically to the samples and analyses specified per the attached Chain of Custody. As such, this report shall not be reproduced except in full, without the written approval of Origin's laboratory.

Unless otherwise noted, the analytical results for all soil samples are reported on a wet weight basis. All analytical analyses were performed under NELAP guidelines unless noted by a data qualifier.

Any holding time exceedances, deviations from the method specifications or deviations from Origins Laboratory's Standard Operating Procedures are outlined in the case narrative.

Thank you for selecting Origins for your analytical needs. Please contact us with any questions concerning this report, or if we can help with anything at all.

Origins Laboratory, Inc.
303.433.1322
o-squad@oelabinc.com



1725 Elk Place, Denver, CO 80211 | Phone: 303.433.1322 | Fax: 303.265.9645

Eagle Environmental Consulting, LLC
8000 W 44th Ave
Wheat Ridge CO 80033

Martin C Eckert III
Project Number: [none]
Project: Noble - Shelton RG #26-8

CROSS REFERENCE REPORT

Sample ID	Laboratory ID	Matrix	Date Sampled	Date Received
Background-01@2'	Y307260-01	Soil	June 30, 2023 8:08	07/12/2023 15:47

Origins Laboratory, Inc.



The results in this report apply to the samples analyzed in accordance with the chain of custody document. This analytical report must be reproduced in its entirety.

Eagle Environmental Consulting, LLC
 8000 W 44th Ave
 Wheat Ridge CO 80033

Martin C Eckert III
 Project Number: [none]
 Project: Noble - Shelton RG #26-8

www.originslaboratory.com

U307260

page 1 of 1


ORIGINS
 LABORATORY, INC

Client: Eagle Environmental Consulting
 Project Manager: Martin Eckert III
 Address: 8000 W 44th Ave
 Project Name: Shelton RG #26-8
Wheat Ridge CO 80033
 Project Number: —
 Telephone Number: 303-433-0179
 Samples Collected By: GF
 Email Address: MCE@EAGLE-ENV.COM

1725 Elk Place | Denver, CO 80211 | Phone: 303.433.1322 | Fax: 303.265.9645

Sample ID Description	Date Sampled	Time Sampled	# of Containers	Preservative				Matrix			Analysis		Sample Instructions	
				Unpreserved	HCl	HNO ₃	Other	Groundwater	Soil	Air Summa #	Other	PH-90450		TCR-1508
Ballywood-0103	6/10/03	0808	1	X				X						1 sampled note
														2 purp
														3
														4
														5
														6
														7
														8
														9
														10
Relinquished By: <u>Garrett</u>	Date: <u>7/12/03</u>	Time: <u>1547</u>		Received By: <u>WJ</u>	Date: <u>7/12/03</u>	Time: <u>1547</u>		Received By:	Date:	Time:	Turnaround Time: Some Day <input type="checkbox"/> 24 Hr <input type="checkbox"/> 48 Hr <input type="checkbox"/> 72 Hr <input type="checkbox"/> Standard <input checked="" type="checkbox"/>			

Temp received: 4 Date Results Needed: X NOBLE

Origins Laboratory, Inc.


The results in this report apply to the samples analyzed in accordance with the chain of custody document. This analytical report must be reproduced in its entirety.

Eagle Environmental Consulting, LLC
 8000 W 44th Ave
 Wheat Ridge CO 80033

Martin C Eckert III
 Project Number: [none]
 Project: Noble - Shelton RG #26-8

Origins Laboratory

F-012207-01-R1
 Effective Date: 01/09/12

Sample Receipt Checklist

Origins Work Order: 4307250

Client: Eagle
 Client Project ID: Shelton RG #26-8

Checklist Completed by: WT/MS

Shipped Via: HD
(UPS, FedEx, Hand Delivered, Pick-up, etc.)

Date/time completed: 7/13/23

Airbill #: N/A

Matrix(s) Received: (Check all that apply): Soil/Solid Water Other: _____

Cooler Number/Temperature: 1 / 4 °C _____ °C _____ °C (Describe) _____ °C

Thermometer ID: 7004

Requirement Description	Yes	No	N/A	Comments (if any)
If samples require cooling, was the temperature between 0°C to ≤ 6°C ⁽¹⁾ ?	/			
Is there ice present (document if blue ice is used)	/			
Are custody seals present on cooler? (if so, document in comments if they are signed and dated, broken or intact)		/		
Are custody seals present on each sample container? (if so, document in comments if they are signed and dated, broken or intact)		/		
Were all samples received intact ⁽¹⁾ ?	/			
Was adequate sample volume provided ⁽¹⁾ ?	/			
Are short holding time analytes or samples with HTs due within 48 hours present ⁽¹⁾ ?		/		
Is a chain-of-custody (COC) present and filled out completely ⁽¹⁾ ?	/			
Does the COC agree with the number and type of sample bottles received ⁽¹⁾ ?	/			
Do the sample IDs on the bottle labels match the COC ⁽¹⁾ ?	/			
Is the COC properly relinquished by the client with date and time recorded ⁽¹⁾ ?	/			
For volatiles in water – is there headspace (> ¼ inch bubble) present? If yes, contact client and note in narrative.			/	
Are samples preserved that require preservation and was it checked ⁽¹⁾ ? (note ID of confirmation instrument used in comments) / (preservation is not confirmed for subcontracted analyses in order to insure sample integrity)/(pH <2 for samples preserved with HNO ₃ , HCL, H ₂ SO ₄) / (pH >10 for samples preserved with NaAsO ₂ +NaOH, ZnAc+NaOH)			/	
Additional Comments (if any):				

⁽¹⁾If NO, then contact the client before proceeding with analysis and note date/time and person contacted as well as the corrective action to in the additional comments (above) and the case narrative.

Reviewed by (Project Manager) [Signature] Date/Time Reviewed 7/13/23

Origins Laboratory, Inc.

[Signature]

The results in this report apply to the samples analyzed in accordance with the chain of custody document. This analytical report must be reproduced in its entirety.

Eagle Environmental Consulting, LLC
 8000 W 44th Ave
 Wheat Ridge CO 80033

Martin C Eckert III
 Project Number: [none]
 Project: Noble - Shelton RG #26-8

Background-01@2'
6/30/2023 8:08:00AM

Analyte	Result	Reporting Limit	Units	Dilution	Batch	Analyst	Prepared	Analyzed	Notes
---------	--------	-----------------	-------	----------	-------	---------	----------	----------	-------

Origins Laboratory, Inc.
Y307260-01 (Soil)

Metals by Saturated Paste by EPA 6010

Calcium	0.967	0.499	meq/L	10	[CALC]	KAP	07/15/2023	07/17/2023	
Magnesium	3.11	0.823	"	"	"	KAP	"	"	
Sodium	14.2	0.435	"	"	"	KAP	"	"	

pH in Soil by 9045D

pH	8.52		pH Units	1	B3G1507	ACN	07/15/2023	07/16/2023	
----	------	--	----------	---	---------	-----	------------	------------	--

SAR by 20B Saturated Paste

SAR	9.98		SAR	1	B3G1503	KAP	07/15/2023	07/17/2023	
-----	------	--	-----	---	---------	-----	------------	------------	--

Origins Laboratory, Inc.



The results in this report apply to the samples analyzed in accordance with the chain of custody document. This analytical report must be reproduced in its entirety.

Eagle Environmental Consulting, LLC
 8000 W 44th Ave
 Wheat Ridge CO 80033

Martin C Eckert III
 Project Number: [none]
 Project: Noble - Shelton RG #26-8

Classical Chemistry Parameters - Quality Control
Origins Laboratory, Inc.

Analyte	Result	Reporting Limit	Units	Spike Level	Source Result	%REC	%REC Limits	RPD	RPD Limit	Notes
---------	--------	-----------------	-------	-------------	---------------	------	-------------	-----	-----------	-------

Batch B3G1503 - Saturated Paste Metals

Blank (B3G1503-BLK1)

Prepared: 07/15/2023 Analyzed: 07/17/2023

SAR	0.00		SAR							
Calcium PPM	ND	10.0	mg/L							
Magnesium PPM	ND	10.0	"							
Sodium PPM	ND	10.0	"							

Duplicate (B3G1503-DUP1)

Source: Y307218-01

Prepared: 07/15/2023 Analyzed: 07/17/2023

SAR	0.00		SAR		0.307			200	200	
Calcium PPM	43.2	10.0	mg/L		43.2			0.0232	50	
Magnesium PPM	12.4	10.0	"		12.1			3.10	50	
Sodium PPM	8.37	10.0	"		8.85			5.57	50	

Origins Laboratory, Inc.



The results in this report apply to the samples analyzed in accordance with the chain of custody document. This analytical report must be reproduced in its entirety.

Eagle Environmental Consulting, LLC
 8000 W 44th Ave
 Wheat Ridge CO 80033

Martin C Eckert III
 Project Number: [none]
 Project: Noble - Shelton RG #26-8

Saturated Paste - Quality Control
Origins Laboratory, Inc.

Analyte	Result	Reporting Limit	Units	Spike Level	Source Result	%REC	%REC Limits	RPD	RPD Limit	Notes
---------	--------	-----------------	-------	-------------	---------------	------	-------------	-----	-----------	-------

Batch B3G1507 - Saturated Paste pH/EC

Duplicate (B3G1507-DUP1)

Source: Y307218-01

Prepared: 07/15/2023 Analyzed: 07/16/2023

pH	8.12		pH Units		8.13			0.123	25	
----	------	--	----------	--	------	--	--	-------	----	--

Origins Laboratory, Inc.



The results in this report apply to the samples analyzed in accordance with the chain of custody document. This analytical report must be reproduced in its entirety.

Eagle Environmental Consulting, LLC
8000 W 44th Ave
Wheat Ridge CO 80033

Martin C Eckert III
Project Number: [none]
Project: Noble - Shelton RG #26-8

Notes and Definitions

ND Analyte NOT DETECTED at or above the reporting limit

RPD Relative Percent Difference

All soil results are reported at a wet weight basis.

Origins Laboratory, Inc.



The results in this report apply to the samples analyzed in accordance with the chain of custody document. This analytical report must be reproduced in its entirety.

Jordan A. Bynon, Project Manager



July 24, 2023

Eagle Environmental Consulting, LLC

Martin C Eckert III

8000 W 44th Ave

Wheat Ridge CO 80033

Project Name - Noble - Shelton RG #26-8

Project Number - [none]

Attached are your analytical results for Noble - Shelton RG #26-8 received by Origins Laboratory, Inc. July 14, 2023. This project is associated with Origins project number Y307321-01.

The analytical results in the following report were analyzed under the guidelines of EPA Methods. These methods are identified as follows; "SW" are defined in SW-846, "EPA" are defined in 40CFR part 136 and "SM" are defined in the most current revision of Standard Methods For the Examination of Water and Wastewater.

The analytical results apply specifically to the samples and analyses specified per the attached Chain of Custody. As such, this report shall not be reproduced except in full, without the written approval of Origin's laboratory.

Unless otherwise noted, the analytical results for all soil samples are reported on a wet weight basis. All analytical analyses were performed under NELAP guidelines unless noted by a data qualifier.

Any holding time exceedances, deviations from the method specifications or deviations from Origins Laboratory's Standard Operating Procedures are outlined in the case narrative.

Thank you for selecting Origins for your analytical needs. Please contact us with any questions concerning this report, or if we can help with anything at all.

Origins Laboratory, Inc.
303.433.1322
o-squad@oelabinc.com



1725 Elk Place, Denver, CO 80211 | Phone: 303.433.1322 | Fax: 303.265.9645

Eagle Environmental Consulting, LLC
8000 W 44th Ave
Wheat Ridge CO 80033

Martin C Eckert III
Project Number: [none]
Project: Noble - Shelton RG #26-8

CROSS REFERENCE REPORT

Sample ID	Laboratory ID	Matrix	Date Sampled	Date Received
Background-01@2'	Y307321-01	Soil	June 30, 2023 8:08	07/14/2023 15:55

Origins Laboratory, Inc.



The results in this report apply to the samples analyzed in accordance with the chain of custody document. This analytical report must be reproduced in its entirety.

Eagle Environmental Consulting, LLC
 8000 W 44th Ave
 Wheat Ridge CO 80033

Martin C Eckert III
 Project Number: [none]
 Project: Noble - Shelton RG #26-8

Origins Laboratory

F-012207-01-R1
 Effective Date: 01/09/12

Sample Receipt Checklist

Origins Work Order: Y307321

Client: Eagle

Client Project ID: Shelton RG #26-8

Checklist Completed by: EHS

Shipped Via: HO
 (UPS, FedEx, Hand Delivered, Pick-up, etc.)

Date/time completed: 7/14/23

Airbill #: N/A

Matrix(s) Received: (Check all that apply): Soil/Solid Water Other: _____

Cooler Number/Temperature: 113 °c / _____ °c / _____ °c (Describe) _____ °c

Thermometer ID: TC01

Requirement Description	Yes	No	N/A	Comments (if any)
If samples require cooling, was the temperature between 0°C to ≤ 6°C ⁽¹⁾ ?	<input checked="" type="checkbox"/>	<input type="checkbox"/>	<input type="checkbox"/>	
Is there ice present (document if blue ice is used)	<input checked="" type="checkbox"/>	<input type="checkbox"/>	<input type="checkbox"/>	
Are custody seals present on cooler? (if so, document in comments if they are signed and dated, broken or intact)	<input type="checkbox"/>	<input checked="" type="checkbox"/>	<input type="checkbox"/>	
Are custody seals present on each sample container? (if so, document in comments if they are signed and dated, broken or intact)	<input type="checkbox"/>	<input checked="" type="checkbox"/>	<input type="checkbox"/>	
Were all samples received intact ⁽¹⁾ ?	<input checked="" type="checkbox"/>	<input type="checkbox"/>	<input type="checkbox"/>	
Was adequate sample volume provided ⁽¹⁾ ?	<input checked="" type="checkbox"/>	<input type="checkbox"/>	<input type="checkbox"/>	
Are short holding time analytes or samples with HTs due within 48 hours present ⁽¹⁾ ?	<input type="checkbox"/>	<input checked="" type="checkbox"/>	<input type="checkbox"/>	
Is a chain-of-custody (COC) present and filled out completely ⁽¹⁾ ?	<input checked="" type="checkbox"/>	<input type="checkbox"/>	<input type="checkbox"/>	
Does the COC agree with the number and type of sample bottles received ⁽¹⁾ ?	<input checked="" type="checkbox"/>	<input type="checkbox"/>	<input type="checkbox"/>	
Do the sample IDs on the bottle labels match the COC ⁽¹⁾ ?	<input checked="" type="checkbox"/>	<input type="checkbox"/>	<input type="checkbox"/>	
Is the COC properly relinquished by the client with date and time recorded ⁽¹⁾ ?	<input checked="" type="checkbox"/>	<input type="checkbox"/>	<input type="checkbox"/>	
For volatiles in water – is there headspace (> ¼ inch bubble) present? If yes, contact client and note in narrative.	<input type="checkbox"/>	<input type="checkbox"/>	<input checked="" type="checkbox"/>	
Are samples preserved that require preservation and was it checked ⁽¹⁾ ? (note ID of confirmation instrument used in comments) / (preservation is not confirmed for subcontracted analyses in order to insure sample integrity)/(pH <2 for samples preserved with HNO ₃ , HCL, H ₂ SO ₄) / (pH >10 for samples preserved with NaAsO ₂ +NaOH, ZnAc+NaOH)	<input type="checkbox"/>	<input type="checkbox"/>	<input checked="" type="checkbox"/>	
Additional Comments (if any):				

⁽¹⁾If NO, then contact the client before proceeding with analysis and note date/time and person contacted as well as the corrective action to in the additional comments (above) and the case narrative.

Reviewed by (Project Manager) [Signature]

Date/Time Reviewed 7/16/23

Origins Laboratory, Inc.

[Signature]

The results in this report apply to the samples analyzed in accordance with the chain of custody document. This analytical report must be reproduced in its entirety.

Eagle Environmental Consulting, LLC
 8000 W 44th Ave
 Wheat Ridge CO 80033

Martin C Eckert III
 Project Number: [none]
 Project: Noble - Shelton RG #26-8

Background-01@2'
6/30/2023 8:08:00AM

Analyte	Result	Reporting Limit	Units	Dilution	Batch	Analyst	Prepared	Analyzed	Notes
---------	--------	-----------------	-------	----------	-------	---------	----------	----------	-------

Origins Laboratory, Inc.
Y307321-01 (Soil)

Table 915 metals by EPA 6020B

Arsenic	2.28	0.0931	mg/kg	10	B3G1716	EDM	07/17/2023	07/18/2023	
Barium	45.6	9.31	"	"	"	EDM	"	"	
Cadmium	ND	0.0931	"	"	"	EDM	"	"	
Copper	ND	9.31	"	"	"	EDM	"	"	
Lead	ND	9.31	"	"	"	EDM	"	"	
Nickel	ND	9.31	"	"	"	EDM	"	"	
Selenium	0.135	0.0931	"	"	"	EDM	"	"	
Silver	ND	0.0931	"	"	"	EDM	"	"	
Zinc	ND	93.1	"	"	"	EDM	"	"	

Origins Laboratory, Inc.



The results in this report apply to the samples analyzed in accordance with the chain of custody document. This analytical report must be reproduced in its entirety.

Eagle Environmental Consulting, LLC
 8000 W 44th Ave
 Wheat Ridge CO 80033

Martin C Eckert III
 Project Number: [none]
 Project: Noble - Shelton RG #26-8

Metals by EPA 6000/7000 Series Methods - Quality Control
Origins Laboratory, Inc.

Analyte	Result	Reporting Limit	Units	Spike Level	Source Result	%REC	%REC Limits	RPD	RPD Limit	Notes
---------	--------	-----------------	-------	-------------	---------------	------	-------------	-----	-----------	-------

Batch B3G1716 - EPA 3050B

Blank (B3G1716-BLK1)

Prepared: 07/17/2023 Analyzed: 07/18/2023

Arsenic	ND	0.000100	mg/kg							
Barium	ND	0.0100	"							
Cadmium	ND	0.000100	"							
Copper	ND	0.0100	"							
Lead	ND	0.0100	"							
Nickel	ND	0.0100	"							
Selenium	ND	0.000100	"							
Silver	ND	0.000100	"							
Zinc	ND	0.100	"							

LCS (B3G1716-BS1)

Prepared: 07/17/2023 Analyzed: 07/18/2023

Arsenic	0.0514	0.000100	mg/kg	0.0500		103	80-120			
Barium	5.27	0.0100	"	5.00		105	80-120			
Cadmium	0.0528	0.000100	"	0.0500		106	80-120			
Copper	0.522	0.0100	"	0.500		104	80-120			
Lead	0.0527	0.0100	"	0.0500		105	80-120			
Nickel	0.0519	0.0100	"	0.0500		104	80-120			
Selenium	0.0509	0.000100	"	0.0500		102	80-120			
Silver	0.0502	0.000100	"	0.0500		100	80-120			
Zinc	0.505	0.100	"	0.500		101	80-120			

Matrix Spike (B3G1716-MS1)

Source: Y307313-01

Prepared: 07/17/2023 Analyzed: 07/18/2023

Arsenic	7.57	0.0935	mg/kg	4.68	3.18	93.9	75-125			
Barium	576	9.35	"	468	84.8	105	75-125			
Cadmium	5.22	0.0935	"	4.68	0.333	104	75-125			
Copper	63.2	9.35	"	46.8	17.2	98.2	75-125			
Lead	23.5	9.35	"	4.68	17.5	129	75-125			QM-07

Origins Laboratory, Inc.



The results in this report apply to the samples analyzed in accordance with the chain of custody document. This analytical report must be reproduced in its entirety.

Eagle Environmental Consulting, LLC
 8000 W 44th Ave
 Wheat Ridge CO 80033

Martin C Eckert III
 Project Number: [none]
 Project: Noble - Shelton RG #26-8

Metals by EPA 6000/7000 Series Methods - Quality Control
Origins Laboratory, Inc.

Analyte	Result	Reporting Limit	Units	Spike Level	Source Result	%REC	%REC Limits	RPD	RPD Limit	Notes
---------	--------	-----------------	-------	-------------	---------------	------	-------------	-----	-----------	-------

Batch B3G1716 - EPA 3050B

Matrix Spike (B3G1716-MS1)

Source: Y307313-01

Prepared: 07/17/2023 Analyzed: 07/18/2023

Nickel	23.6	9.35	mg/kg	4.68	16.9	143	75-125			QM-07
Selenium	4.66	0.0935	"	4.68	0.453	89.9	75-125			
Silver	4.63	0.0935	"	4.68	0.0414	98.1	75-125			
Zinc	124	93.5	"	46.8	67.4	120	75-125			

Matrix Spike Dup (B3G1716-MSD1)

Source: Y307313-01

Prepared: 07/17/2023 Analyzed: 07/18/2023

Arsenic	7.40	0.0969	mg/kg	4.84	3.18	87.1	75-125	2.33	20	
Barium	599	9.69	"	484	84.8	106	75-125	3.83	20	
Cadmium	5.30	0.0969	"	4.84	0.333	103	75-125	1.60	20	
Copper	64.2	9.69	"	48.4	17.2	96.8	75-125	1.57	20	
Lead	22.3	9.69	"	4.84	17.5	99.3	75-125	5.33	20	
Nickel	21.5	9.69	"	4.84	16.9	94.6	75-125	9.40	20	
Selenium	4.72	0.0969	"	4.84	0.453	88.0	75-125	1.19	20	
Silver	4.78	0.0969	"	4.84	0.0414	97.8	75-125	3.18	20	
Zinc	114	96.9	"	48.4	67.4	96.6	75-125	8.02	20	

Origins Laboratory, Inc.



The results in this report apply to the samples analyzed in accordance with the chain of custody document. This analytical report must be reproduced in its entirety.

Eagle Environmental Consulting, LLC
8000 W 44th Ave
Wheat Ridge CO 80033

Martin C Eckert III
Project Number: [none]
Project: Noble - Shelton RG #26-8

Notes and Definitions

QM-07 The spike recovery was outside acceptance limits for the MS and/or MSD. The batch was accepted based on acceptable LCS recovery.

ND Analyte NOT DETECTED at or above the reporting limit

RPD Relative Percent Difference

All soil results are reported at a wet weight basis.

Origins Laboratory, Inc.



The results in this report apply to the samples analyzed in accordance with the chain of custody document. This analytical report must be reproduced in its entirety.

Jordan A. Bynon, Project Manager