

Well Latitude / Longitude:  
40.285023/-104.609367

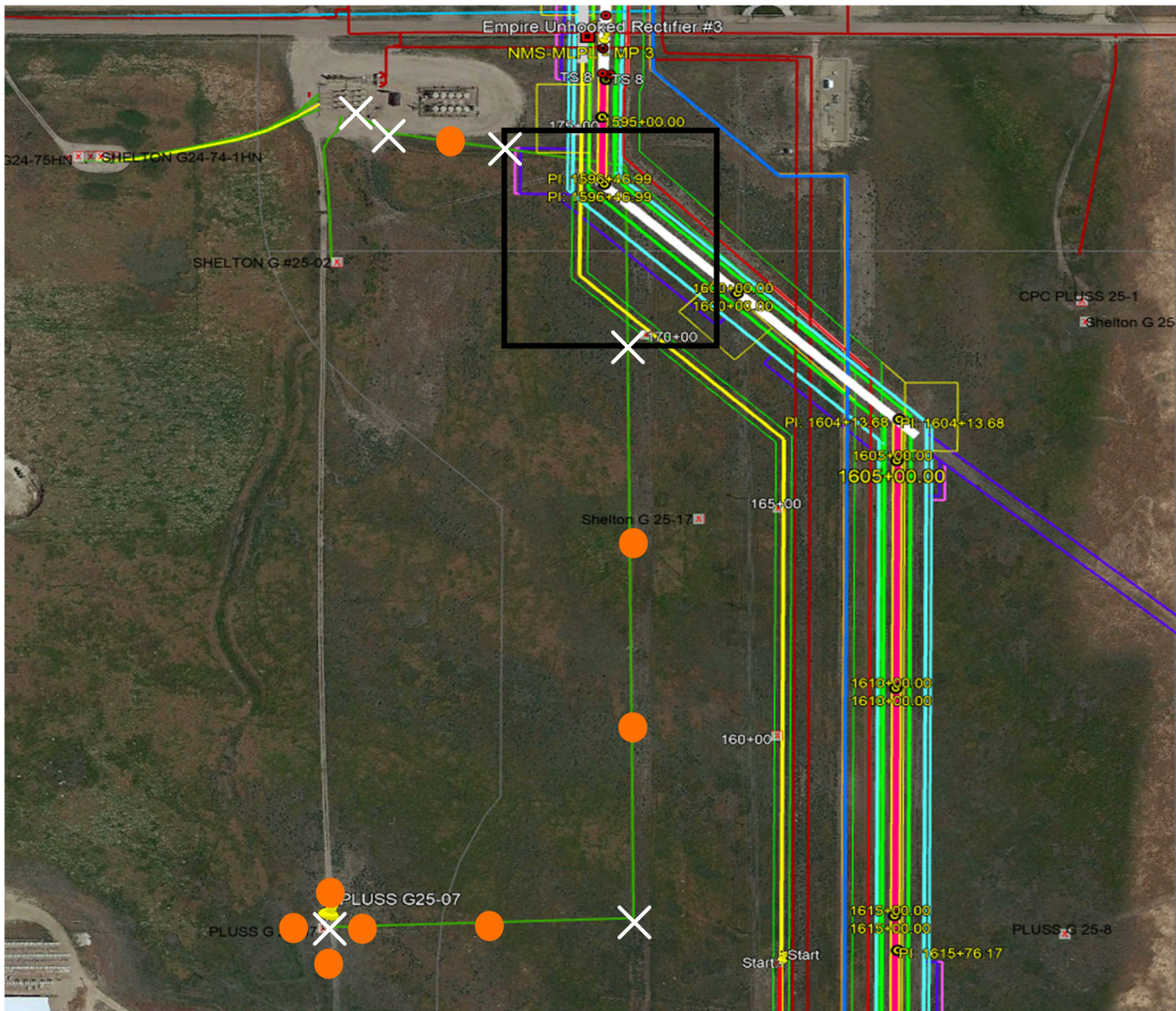
Flowline Point A (Lat / Long):  
40.285031/-104.609364

Flowline Point B (Lat / Long):  
40.289929/-104.609138

Flowline Length (ft):  
2772

Flowline Abandonment Type:  
Partial abandon-in-place due to  
conflicts with multiple pipeline corridors

Comments:  
**X** = Proposed Soil Sample Location  
**□** = Area of Conflict, Proposed  
Flowline Abandon-in-Place Area  
**●** = Field Screening Location



Map Created Date:  
3-29-2023

Well Name:  
PLUS G25-07 (25-2)

Map Created By:  
Jeff White

Well API:  
05-123-12588

