

Wellhead Closure Checklist

COGCC Rule 911.a.(4) Environmental Site Closure Assessment Field Form

Additional attachments (optional):		Pit Closure <input type="checkbox"/>		Tank Battery Closure <input type="checkbox"/>		Flowline Closure <input type="checkbox"/>		Partially Buried Vault Closure <input type="checkbox"/>	
Site Name & COGCC Facility Number: Pluss G #25-07		Date: 06/30/23					Remediation Project #: 28764		
Associated Wells: 05-123-12588		Age of Site: Years					Number of Photos Attached: 1		
Location: (GPS coordinates of wellhead or southeastern most wellhead for multiple)						Estimated Facility Size (acres):			
40.285030 / -104.609370									
General Condition of Site: (General observations regarding housekeeping, corrosion, waste management, etc.)									
Good Condition									
USCS Soil Type: Silty SAND				Estimated Depth to Groundwater: Approx. 10-20'					
Hydrocarbon Impacted Soils / Spills: (Note estimated size and if impact appears to be surficial or extends to an unknown depth)									
Strong hydrocarbon odor observed in excavation, no staining.									
Salt Crusted Soils or Impacted Vegetation: (Note estimated size and if impact appears to be surficial or extends to an unknown depth)									
None observed.									
Wellhead(s)									
Well API	05-123-12588								
Age	Years								
Condition of surface around wellhead	Good - No Odor/Staining								
PID Readings	WH-N: 1.9	WH-E: 1.8	WH-S: 2.4	WH-W: 2.1					
Condition of subsurface (staining present)	Strong HC odor observed.								
PID Readings	169.8	1748	20.0	62.1	2434				
Sample taken? Location/Sample ID#	WH-SS-01	WH-SS-02	WH-SS-03	WH-SS-04	WH-FS-01				
Photo Number(s)	See photolog								
Other observations regarding wellheads:									
Well casing cut/capped following assessment.									
Summary									
Was impacted soil identified?									
No		Yes - less than 10 cubic yards			Yes - more than 10 cubic yards				
Total number of samples field screened: 9				Total number of samples collected: 9					
Highest PID Reading: 2434				Total number of samples submitted to lab for analysis: 5					
If more than 10 cubic yards of impacted soil were observed:									
Vertical extent:				Estimated spill volume:					
N/A									
Lateral extent:				Volume of soil removed:					
Is additional investigation required?									
Was groundwater encountered during the investigation?									
<input checked="" type="checkbox"/> No		Yes - not impacted or in contact with impacted soils			Yes - groundwater impacted and/or in contact with impacted soils				
Measured depth to groundwater:				Was remedial groundwater removal conducted? Yes No					
Date Groundwater was encountered:				Commencement date of removal:					
Sheen on groundwater? Yes No				Volume of groundwater removed prior to sampling:					
Free product observed? Yes No				Volume of groundwater removed post sampling:					
Total number of samples collected:				Total Volume of groundwater removed:					
Total number of samples submitted to lab for analysis:									



FIGURES

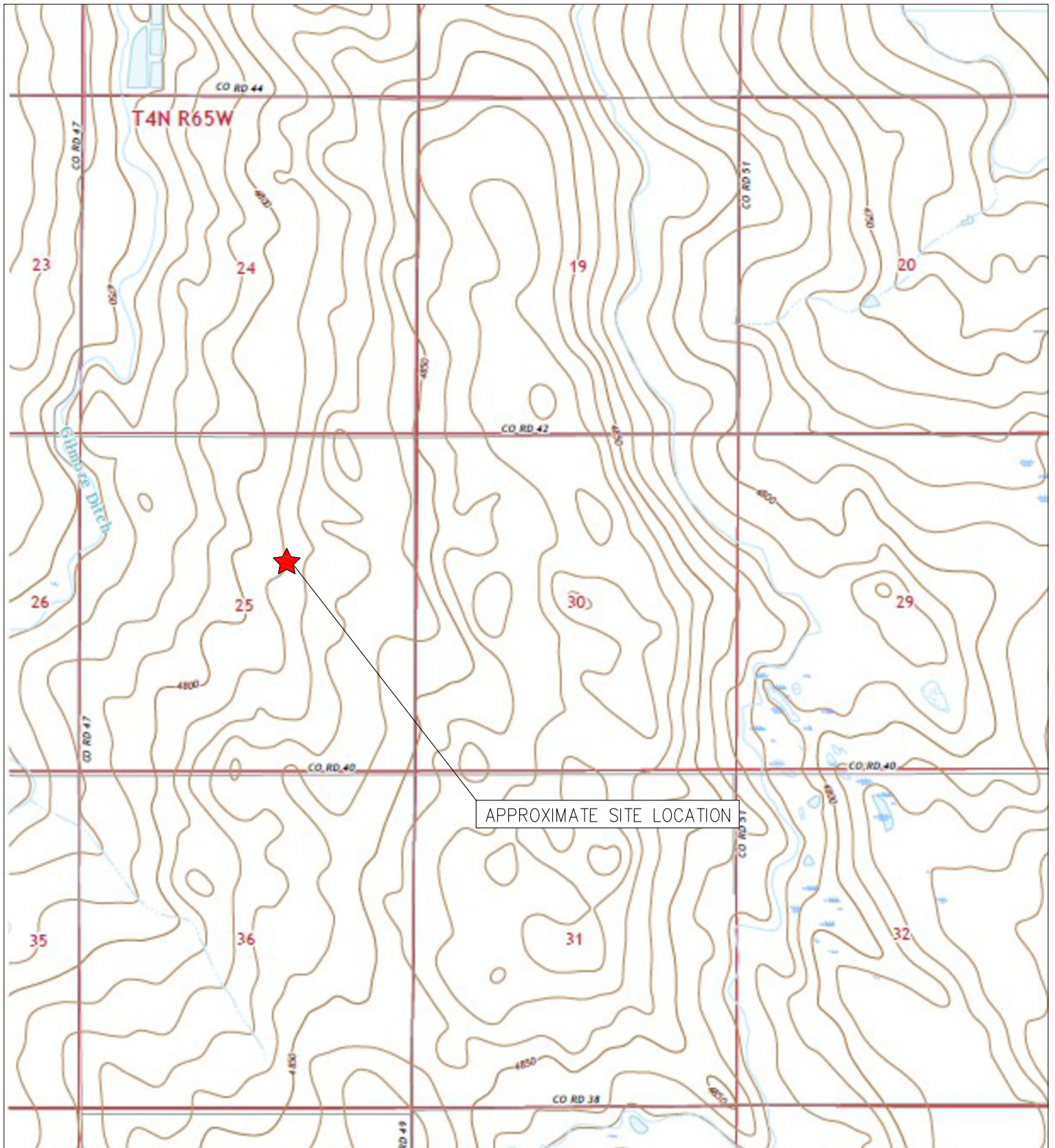
Figure 1: Topographic Site Location Map

Figure 2: Aerial Site Location Map

Figure 3: Soil Analytical Map

Figure 4: Polycyclic Aromatic Hydrocarbons Map

Figure 5: Metals in Soil Map



TOPOGRAPHIC SITE LOCATION MAP
 PLUS G #25-07
 CLOSURE ASSESSMENT
 40.285030 / -104.609370
 SW¼ NE¼ SEC.25 T4N R65W 6PM
 WELD COUNTY, COLORADO
 API # 05-123-12588
 REMEDIATION # 28764



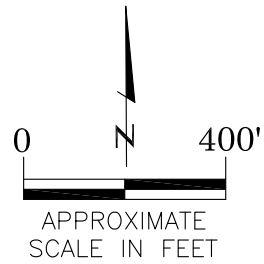
EAGLE
 ENVIRONMENTAL
 CONSULTING, LLC

8000 W 44th Ave, Wheat Ridge, CO 80033
 Ph: 303-433-0479 • F: 303-325-5449



LEGEND

- FORMER PLUSS G #25-07 WELLHEAD (PLUGGED AND ABANDONED)
- ASSOCIATED SEPARATOR
- APPROXIMATE FLOWLINE LOCATION



AERIAL SITE LOCATION MAP
 PLUSS G #25-07
 CLOSURE ASSESSMENT
 40.285030 / -104.609370
 SW¼ NE¼ SEC.25 T4N R65W 6PM
 WELD COUNTY, COLORADO
 API # 05-123-12588
 REMEDIATION # 28764

FIGURE NO.
2

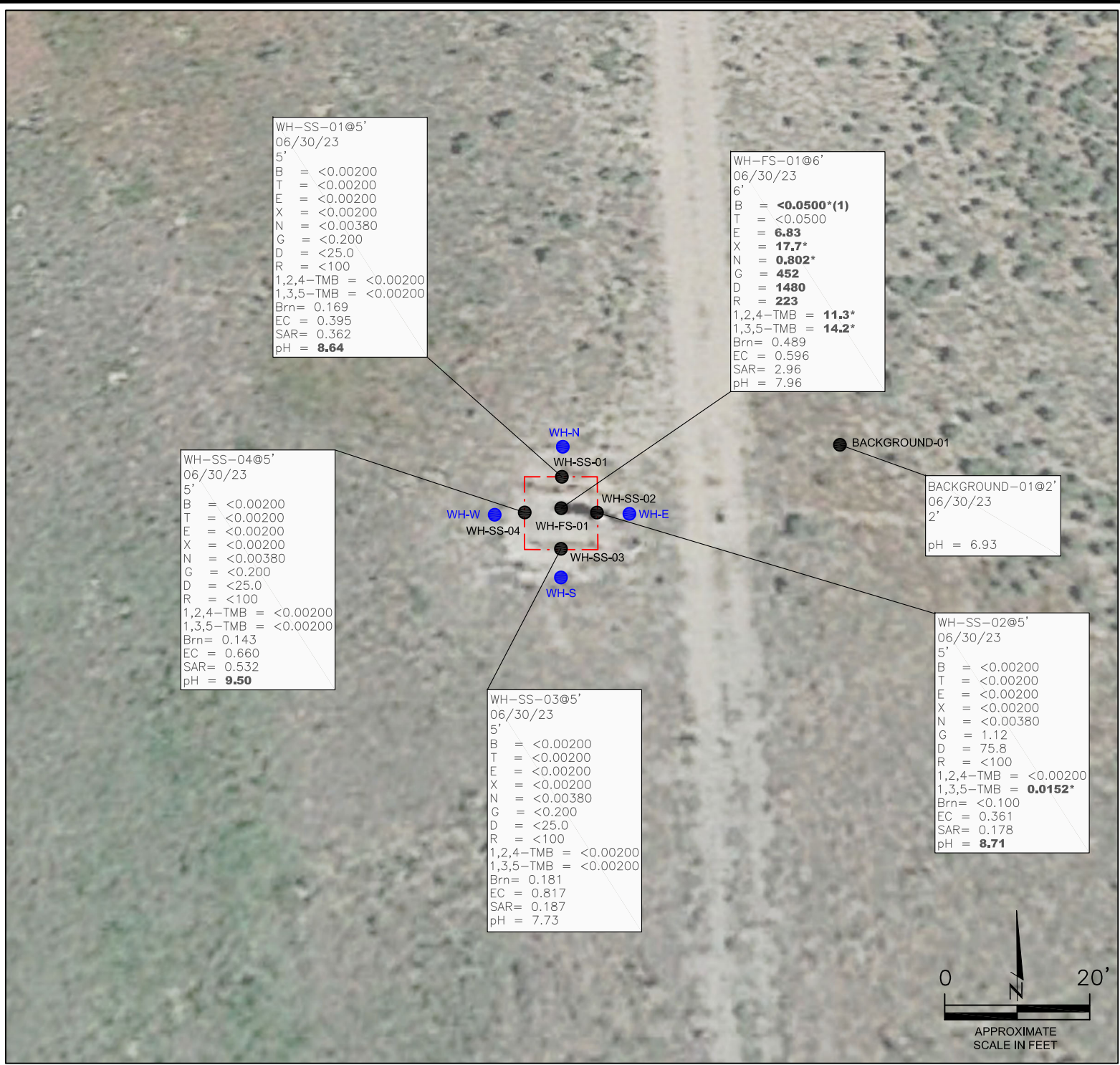
DRAWN BY:
JF



EAGLE

ENVIRONMENTAL
CONSULTING, LLC

8000 W 44th Ave, Wheat Ridge, CO 80033
Ph: 303-433-0479 • F: 303-325-5449



WH-SS-01@5'
06/30/23
5'
B = <0.00200
T = <0.00200
E = <0.00200
X = <0.00200
N = <0.00380
G = <0.200
D = <25.0
R = <100
1,2,4-TMB = <0.00200
1,3,5-TMB = <0.00200
Brn= 0.169
EC = 0.395
SAR= 0.362
pH = **8.64**

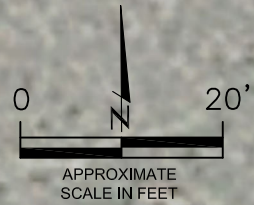
WH-FS-01@6'
06/30/23
6'
B = **<0.0500*(1)**
T = <0.0500
E = **6.83**
X = **17.7***
N = **0.802***
G = **452**
D = **1480**
R = **223**
1,2,4-TMB = **11.3***
1,3,5-TMB = **14.2***
Brn= 0.489
EC = 0.596
SAR= 2.96
pH = 7.96

WH-SS-04@5'
06/30/23
5'
B = <0.00200
T = <0.00200
E = <0.00200
X = <0.00200
N = <0.00380
G = <0.200
D = <25.0
R = <100
1,2,4-TMB = <0.00200
1,3,5-TMB = <0.00200
Brn= 0.143
EC = 0.660
SAR= 0.532
pH = **9.50**

BACKGROUND-01@2'
06/30/23
2'
pH = 6.93

WH-SS-02@5'
06/30/23
5'
B = <0.00200
T = <0.00200
E = <0.00200
X = <0.00200
N = <0.00380
G = 1.12
D = 75.8
R = <100
1,2,4-TMB = <0.00200
1,3,5-TMB = **0.0152***
Brn= <0.100
EC = 0.361
SAR= 0.178
pH = **8.71**

WH-SS-03@5'
06/30/23
5'
B = <0.00200
T = <0.00200
E = <0.00200
X = <0.00200
N = <0.00380
G = <0.200
D = <25.0
R = <100
1,2,4-TMB = <0.00200
1,3,5-TMB = <0.00200
Brn= 0.181
EC = 0.817
SAR= 0.187
pH = 7.73



LEGEND

- WELLHEAD ASSESSMENT BOUNDARIES
- APPROXIMATE LOCATION OF SOIL SAMPLES FIELD SCREENED, ONLY, WITH PHOTOIONIZATION DETECTOR
- APPROXIMATE LOCATION OF SOIL SAMPLES SUBMITTED FOR LABORATORY ANALYSIS

PARAMETERS

SAMPLE LOCATION
DATE
DEPTH (FEET)
B = BENZENE (mg/kg)
T = TOLUENE (mg/kg)
E = ETHYLBENZENE (mg/kg)
X = TOTAL XYLENES (mg/kg)
N = NAPHTHALENE (mg/kg)
G = TPH-GRO (mg/kg)
D = TPH-DRO (mg/kg)
R = TPH-RRO (mg/kg)
1,2,4-TMB = 1,2,4 TRIMETHYLBENZENE (mg/kg)
1,3,5-TMB = 1,3,5 TRIMETHYLBENZENE (mg/kg)
Brn= BORON (mg/L)
EC = SPECIFIC CONDUCTANCE (mmhos/cm)
SAR= SODIUM ADSORPTION RATIO
pH = pH (pH UNITS)

mg/kg = MILLIGRAMS PER KILOGRAM
mg/L = MILLIGRAMS PER LITER
mmhos/cm = MILLIMHOS PER CENTIMETER

TPH-GRO = TOTAL PETROLEUM HYDROCARBONS - GASOLINE RANGE ORGANICS
TPH-DRO = TOTAL PETROLEUM HYDROCARBONS - DIESEL RANGE ORGANICS
TPH-RRO = TOTAL PETROLEUM HYDROCARBONS - RESIDUAL RANGE ORGANICS

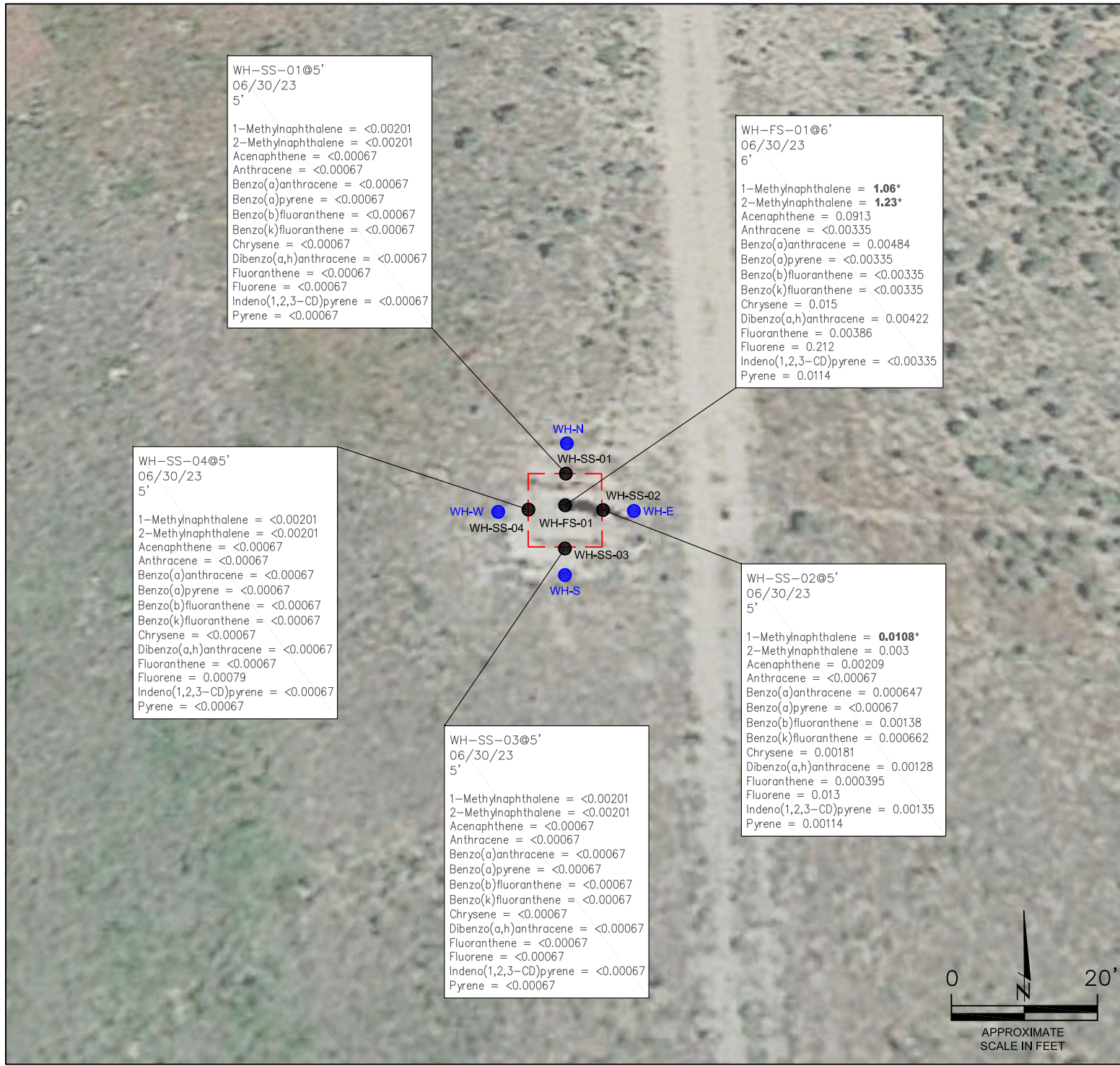
NOTES:
VALUES PRESENTED WITH A LESS THAN SYMBOL (<) DID NOT CONTAIN CONCENTRATIONS AT OR ABOVE LABORATORY DETECTION LIMITS.
VALUES PRESENTED IN **BOLD** EXCEED ECMC TABLE 915-1 REGULATORY LIMITS.
VALUES PRESENTED WITH ASTERISK (*) EXCEED ECMC TABLE 915-1 PROTECTION OF GROUNDWATER SOIL SCREENING LEVELS, ONLY.
(1) SAMPLE WAS DILUTED, RAISING LABORATORY DETECTION LIMIT. SAMPLE IS NON-DETECT.
ECMC = ENERGY & CARBON MANAGEMENT COMMISSION

SOIL ANALYTICAL MAP
PLUS G #25-07
CLOSURE ASSESSMENT
40.285030 / -104.609370
SW¼ NE¼ SEC.25 T4N R65W 6PM
WELD COUNTY, COLORADO
API # 05-123-12588
REMEDIAION # 28764

FIGURE NO.
3

DRAWN BY:
JF

EAGLE
ENVIRONMENTAL
CONSULTING, LLC
8000 W 44th Ave, Wheat Ridge, CO 80033
Ph: 303-433-0479 • F: 303-325-5449



WH-SS-01@5'
06/30/23
5'

1-Methylnaphthalene = <0.00201
2-Methylnaphthalene = <0.00201
Acenaphthene = <0.00067
Anthracene = <0.00067
Benzo(a)anthracene = <0.00067
Benzo(a)pyrene = <0.00067
Benzo(b)fluoranthene = <0.00067
Benzo(k)fluoranthene = <0.00067
Chrysene = <0.00067
Dibenzo(a,h)anthracene = <0.00067
Fluoranthene = <0.00067
Fluorene = <0.00067
Indeno(1,2,3-CD)pyrene = <0.00067
Pyrene = <0.00067

WH-FS-01@6'
06/30/23
6'

1-Methylnaphthalene = **1.06***
2-Methylnaphthalene = **1.23***
Acenaphthene = 0.0913
Anthracene = <0.00335
Benzo(a)anthracene = 0.00484
Benzo(a)pyrene = <0.00335
Benzo(b)fluoranthene = <0.00335
Benzo(k)fluoranthene = <0.00335
Chrysene = 0.015
Dibenzo(a,h)anthracene = 0.00422
Fluoranthene = 0.00386
Fluorene = 0.212
Indeno(1,2,3-CD)pyrene = <0.00335
Pyrene = 0.0114

WH-SS-04@5'
06/30/23
5'

1-Methylnaphthalene = <0.00201
2-Methylnaphthalene = <0.00201
Acenaphthene = <0.00067
Anthracene = <0.00067
Benzo(a)anthracene = <0.00067
Benzo(a)pyrene = <0.00067
Benzo(b)fluoranthene = <0.00067
Benzo(k)fluoranthene = <0.00067
Chrysene = <0.00067
Dibenzo(a,h)anthracene = <0.00067
Fluoranthene = <0.00067
Fluorene = 0.00079
Indeno(1,2,3-CD)pyrene = <0.00067
Pyrene = <0.00067

WH-SS-03@5'
06/30/23
5'

1-Methylnaphthalene = <0.00201
2-Methylnaphthalene = <0.00201
Acenaphthene = <0.00067
Anthracene = <0.00067
Benzo(a)anthracene = <0.00067
Benzo(a)pyrene = <0.00067
Benzo(b)fluoranthene = <0.00067
Benzo(k)fluoranthene = <0.00067
Chrysene = <0.00067
Dibenzo(a,h)anthracene = <0.00067
Fluoranthene = <0.00067
Fluorene = <0.00067
Indeno(1,2,3-CD)pyrene = <0.00067
Pyrene = <0.00067

WH-SS-02@5'
06/30/23
5'

1-Methylnaphthalene = **0.0108***
2-Methylnaphthalene = 0.003
Acenaphthene = 0.00209
Anthracene = <0.00067
Benzo(a)anthracene = 0.000647
Benzo(a)pyrene = <0.00067
Benzo(b)fluoranthene = 0.00138
Benzo(k)fluoranthene = 0.000662
Chrysene = 0.00181
Dibenzo(a,h)anthracene = 0.00128
Fluoranthene = 0.000395
Fluorene = 0.013
Indeno(1,2,3-CD)pyrene = 0.00135
Pyrene = 0.00114

LEGEND

- WELLHEAD ASSESSMENT BOUNDARIES
- SS-02 APPROXIMATE LOCATION OF SOIL SAMPLES FIELD SCREENED, ONLY, WITH PHOTOIONIZATION DETECTOR
- SS-02 APPROXIMATE LOCATION OF SOIL SAMPLES SUBMITTED FOR LABORATORY ANALYSIS

PARAMETERS

SAMPLE LOCATION
DATE SAMPLE COLLECTED
APPROXIMATE DEPTH
POLYCYCLIC AROMATIC HYDROCARBONS (PAHs) (mg/kg)

mg/kg = MILLIGRAMS PER KILOGRAM

NOTES:
VALUES PRESENTED WITH A LESS THAN SYMBOL (<) DID NOT CONTAIN CONCENTRATIONS AT OR ABOVE LABORATORY DETECTION LIMITS.

VALUES PRESENTED IN **BOLD** EXCEED ECMC TABLE 915-1 REGULATORY LIMITS.

VALUES PRESENTED WITH AN ASTERISK (*) EXCEED ECMC TABLE 915-1 GROUNDWATER SOIL SCREENING LEVELS, ONLY.

ECMC = ENERGY & CARBON MANAGEMENT COMMISSION

POLYCYCLIC AROMATIC HYDROCARBONS MAP
PLUSS G #25-07
CLOSURE ASSESSMENT
40.285030 / -104.609370
SW¼ NE¼ SEC.25 T4N R65W 6PM
WELD COUNTY, COLORADO
API # 05-123-12588
REMEDATION # 28764

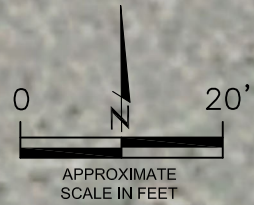
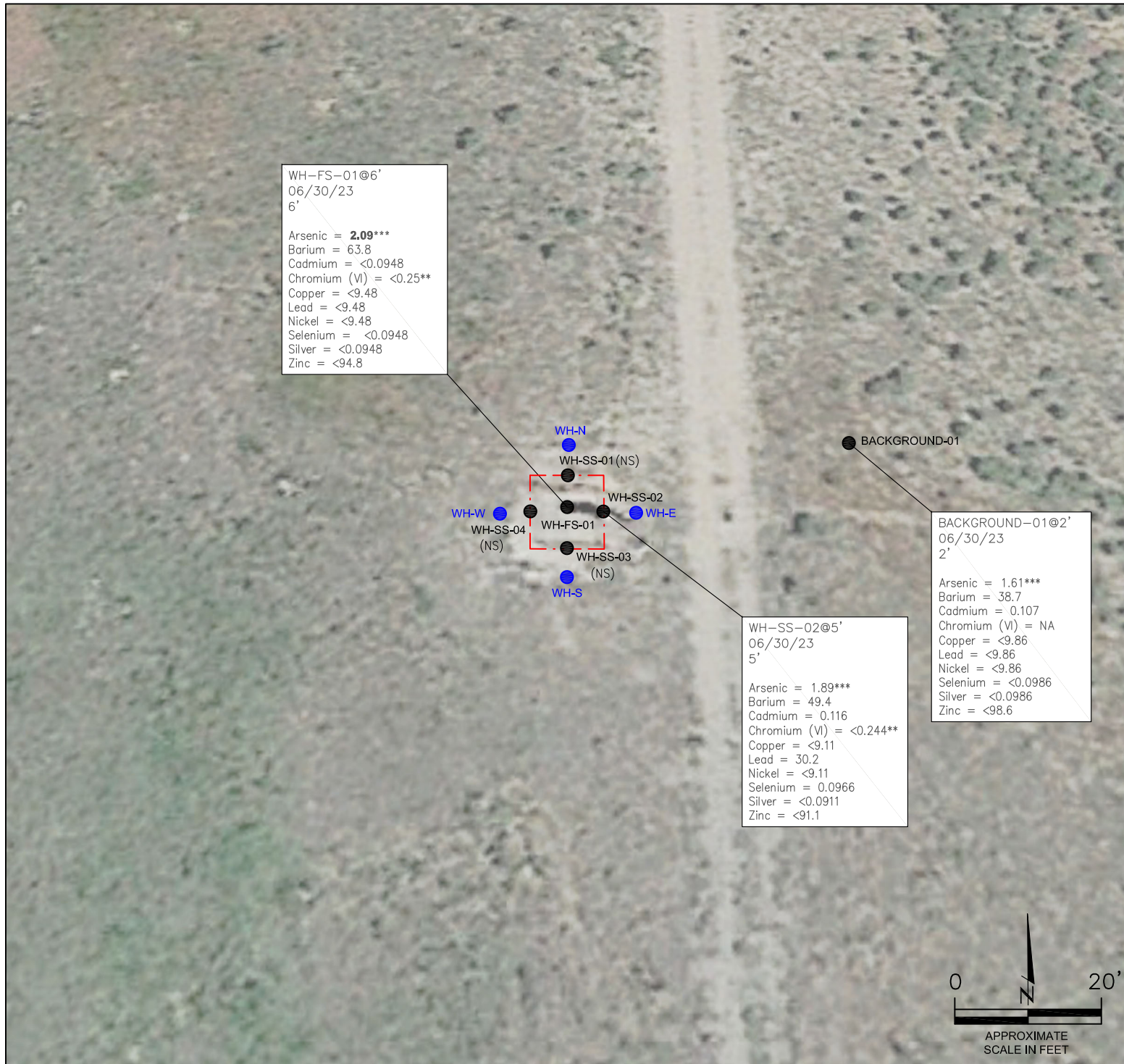


FIGURE NO.
4
DRAWN BY:
JF

EAGLE
ENVIRONMENTAL
CONSULTING, LLC
8000 W 44th Ave, Wheat Ridge, CO 80033
Ph: 303-433-0479 • F: 303-325-5449



WH-FS-01@6'
06/30/23
6'

Arsenic = **2.09*****
Barium = 63.8
Cadmium = <0.0948
Chromium (VI) = <0.25**
Copper = <9.48
Lead = <9.48
Nickel = <9.48
Selenium = <0.0948
Silver = <0.0948
Zinc = <94.8

WH-SS-02@5'
06/30/23
5'

Arsenic = 1.89***
Barium = 49.4
Cadmium = 0.116
Chromium (VI) = <0.244**
Copper = <9.11
Lead = 30.2
Nickel = <9.11
Selenium = 0.0966
Silver = <0.0911
Zinc = <91.1

BACKGROUND-01@2'
06/30/23
2'

Arsenic = 1.61***
Barium = 38.7
Cadmium = 0.107
Chromium (VI) = NA
Copper = <9.86
Lead = <9.86
Nickel = <9.86
Selenium = <0.0986
Silver = <0.0986
Zinc = <98.6

LEGEND

- WELLHEAD ASSESSMENT BOUNDARIES
- APPROXIMATE LOCATION OF SOIL SAMPLES FIELD SCREENED, ONLY, WITH PHOTOIONIZATION DETECTOR
- APPROXIMATE LOCATION OF SOIL SAMPLES SUBMITTED FOR LABORATORY ANALYSIS

PARAMETERS

SAMPLE LOCATION
DATE SAMPLE COLLECTED
APPROXIMATE DEPTH
Arsenic = (mg/kg)
Barium = (mg/kg)
Cadmium = (mg/kg)
Chromium (VI) = (mg/kg)
Copper = (mg/kg)
Lead = (mg/kg)
Nickel = (mg/kg)
Selenium = (mg/kg)
Silver = (mg/kg)
Zinc = (mg/kg)

mg/kg = MILLIGRAMS PER KILOGRAM

NA - NOT ANALYZED

(NS) - NOT SAMPLED

NOTES:

VALUES PRESENTED WITH A LESS THAN SYMBOL (<) DID NOT CONTAIN CONCENTRATIONS AT/OR ABOVE LABORATORY REPORTING LIMITS AND/OR MINIMUM DETECTION LIMITS.

VALUES PRESENTED IN **BOLD** EXCEED ECMC TABLE 915-1 REGULATORY LIMITS.

*VALUES EXCEED ECMC TABLE 915-1 PROTECTION OF GROUNDWATER SOIL SCREENING LEVELS, ONLY.

**ACHIEVABLE PRACTICAL QUANTITATIVE LIMITS FOR HEXAVALENT CHROMIUM (Cr VI) IN SOILS IS IN THE RANGE OF 0.1 TO 1 mg/kg.

***ARSENIC IS NATURALLY OCCURRING IN COLORADO. LOCAL CLEAN-UP LEVEL (2.01 mg/kg) IS 1.25*BACKGROUND (1.61 mg/kg).

ECMC = ENERGY & CARBON MANAGEMENT COMMISSION

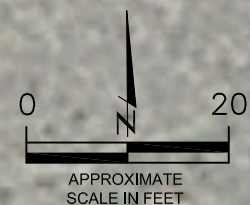
METALS IN SOIL MAP
PLUSS G #25-07
CLOSURE ASSESSMENT
40.285030 / -104.609370
SW¼ NE¼ SEC.25 T4N R65W 6PM
WELD COUNTY, COLORADO
API # 05-123-12588
REMEDIAION # 28764

FIGURE NO.
5

DRAWN BY:
JF

EAGLE
ENVIRONMENTAL
CONSULTING, LLC

8000 W 44th Ave, Wheat Ridge, CO 80033
Ph: 303-433-0479 • F: 303-325-5449





TABLES

Table 1: Photoionization Detector Reading Summary

Table 2: Soil Analytical Results Summary

TABLE 1
PHOTOIONIZATION DETECTOR READING SUMMARY
PLUSS G #25-07
CLOSURE ASSESSMENT
40.285030 / -104.609370
SW¼ NE¼ SEC.25 T4N R65W 6PM
WELD COUNTY, COLORADO
API # 05-123-12588
REMIEDIATION # 28764

Sample Location (Latitude/Longitude)	Date	Approximate Depth (feet)	PID Reading (ppm-v)	Lab Submission (Y/N)
WH-SS-01 @ 5' (40.285045 / -104.609372)	06/30/23	5	169.8	Y
WH-SS-02 @ 5' (40.285031 / -104.609352)	06/30/23	5	1748	Y
WH-SS-03 @ 5' (40.285017 / -104.609369)	06/30/23	5	20.0	Y
WH-SS-04 @ 5' (40.285031 / -104.609389)	06/30/23	5	62.1	Y
WH-FS-01 @ 6' (40.285030 / -104.609370)	06/30/23	6	2434	Y
Background-01 @ 2' (40.285063 / -104.609228)	06/30/23	2	12.1	Y
WH-N @ 0.5' (40.285052 / -104.609392)	06/30/23	0.5	18.9	N
WH-E @ 0.5' (40.285034 / -104.609367)	06/30/23	0.5	16.8	N
WH-S @ 0.5' (40.285014 / -104.609392)	06/30/23	0.5	20.4	N
WH-W @ 0.5' (40.285034 / -104.609420)	06/30/23	0.5	20.1	N
(Y/N) = Yes or No ppm-v = parts per million by volume PID = Photoionization Detector				



TABLE 2
SOIL ANALYTICAL RESULTS SUMMARY
PLUSS G #25-07
CLOSURE ASSESSMENT
40.285030 / -104.609370
NW¼ NE¼ SEC.12 T3N R64W 6PM
WELD COUNTY, COLORADO
API # 05-123-12588
REMEDATION # 28764

Sample Location		WH-FS-01 @ 6'	WH-SS-01 @ 5'	WH-SS-02 @ 5'	WH-SS-03 @ 5'	WH-SS-04 @ 5'	Background-01 @ 2'
(Latitude / Longitude)		(40.285030 / -104.609370)	(40.285045 / -104.609372)	(40.285031 / -104.609352)	(40.285017 / -104.609369)	(40.285031 / -104.609389)	(40.285063 / -104.609228)
Sample Date		6/30/2023	6/30/2023	6/30/2023	6/30/2023	6/30/2023	6/23/2023
Sample Depth		6	5	5	5	5	2
PID Reading (ppm-v)		2434	169.8	1748	20	62.1	12.1
Regulatory Limits							
Chemical of Concern	Units	ECMC Table 915-1 RSSLs	ECMC Table 915-1 GSSLs	Local Clean-Up Level			
VOCs							
Benzene	mg/kg	1.2	0.0026	--	<0.0500*(1)	<0.00200	<0.00200
Toluene	mg/kg	490	0.69	--	<0.0500	<0.00200	<0.00200
Ethylbenzene	mg/kg	5.8	0.78	--	6.83*	<0.00200	<0.00200
Total Xylenes	mg/kg	58	9.9	--	17.7*	<0.00200	<0.00200
Naphthalene	mg/kg	2	0.0038	--	0.802*	<0.00380	<0.00380
1,2,4-Trimethylbenzene	mg/kg	30	0.0081	--	11.3*	<0.00200	<0.00200
1,3,5-Trimethylbenzene	mg/kg	27	0.0087	--	14.2*	<0.00200	<0.00200
TOTAL PETROLEUM HYDROCARBONS							
TPH-GRO	mg/kg	500	--	--	452	<0.200	1.12
TPH-DRO	mg/kg		--	--	1480	<25.0	75.8
TPH-RRO	mg/kg		--	--	223	<100	<100
POLYCYCLIC AROMATIC HYDROCARBONS							
1-Methyl-naphthalene	mg/kg	18	0.006	--	1.06*	<0.00201	0.0108*
2-Methyl-naphthalene	mg/kg	24	0.019	--	1.23*	<0.00201	0.003
Acenaphthene	mg/kg	360	0.55	--	0.0913	<0.00067	0.00209
Anthracene	mg/kg	1800	5.8	--	<0.00335	<0.00067	<0.00067
Benzo(a)-anthracene	mg/kg	1.1	0.011	--	0.00484	<0.00067	0.000647
Benzo(a)-pyrene	mg/kg	0.11	0.24	--	<0.00335	<0.00067	<0.00067
Benzo(b)-fluoranthene	mg/kg	1.1	0.3	--	<0.00335	<0.00067	0.00138
Benzo(k)-fluoranthene	mg/kg	11	2.9	--	<0.00335	<0.00067	0.000662
Chrysene	mg/kg	110	9	--	0.015	<0.00067	0.00181
Dibenzo(a,h)-anthracene	mg/kg	0.11	0.096	--	0.00422	<0.00067	0.00128
Fluoranthene	mg/kg	240	8.9	--	0.00386	<0.00067	0.000395
Fluorene	mg/kg	240	0.54	--	0.212	<0.00067	0.013
Indeno(1,2,3-cd)-pyrene	mg/kg	1.1	0.98	--	<0.00335	<0.00067	0.00135
Pyrene	mg/kg	180	1.3	--	0.0114	<0.00067	0.00114
SOIL SUITABILITY (Inorganics)							
Boron	mg/L	2	--	--	0.489	0.169	<0.100
pH	standard unit	6-8.3	--	--	7.96	8.64	7.73
Sodium Adsorption Ratio (SAR)	--	<6	--	--	2.96	0.362	0.178
Specific Conductance (EC)	mmhos/cm	<4	--	--	0.596	0.395	0.361
METALS							
Arsenic	mg/kg	0.68***	0.29***	2.01***	2.09***	NA	1.89***
Barium	mg/kg	15000	82	--	63.8	NA	49.4
Cadmium	mg/kg	71	0.38	--	<0.0948	NA	0.116
Copper	mg/kg	3100	46	--	<9.48	NA	<9.11
Lead	mg/kg	400	14	--	<9.48	NA	30.2*
Nickel	mg/kg	1500	26	--	<9.48	NA	<9.11
Selenium	mg/kg	390	0.26	--	<0.0948	NA	0.0966
Silver	mg/kg	390	0.8	--	<0.0948	NA	<0.0911
Zinc	mg/kg	23000	370	--	<94.8	NA	<91.1
Hexavalent Chromium	mg/kg	0.3**	0.00067**	0.1 to 1.0**	<0.25**	NA	<0.244**
ECMC = Energy & Carbon Management Commission NA - Not Analyzed VOCs - Volatile Organic Compounds							
mg/kg = milligrams per kilogram							
mmhos/cm = millimhos per centimeter							
PID = Photoionization Detector							
ppm-v = parts per million by volume							
mg/L = milligrams per liter							
SAR = Sodium Adsorption Ratio							
Notes:							
Values presented with a less than symbol (<) did not contain concentrations at or above the laboratory reporting limit and/or minimum detection limit.							
Values presented in BOLD exceed ECMC Table 915-1 Regulatory Limits. Values presented with asterisk (*) exceed ECMC Table 915-1 GSSLs, only. (1) Sample was diluted, raising laboratory detection limit. Sample is non-detect.							
**Achievable practical quantitative limits for Hexavalent Chromium in soils is in the range of 0.1 to 1 mg/kg.							
***Arsenic is naturally occurring in Colorado.							



ATTACHMENT A

Photo Log

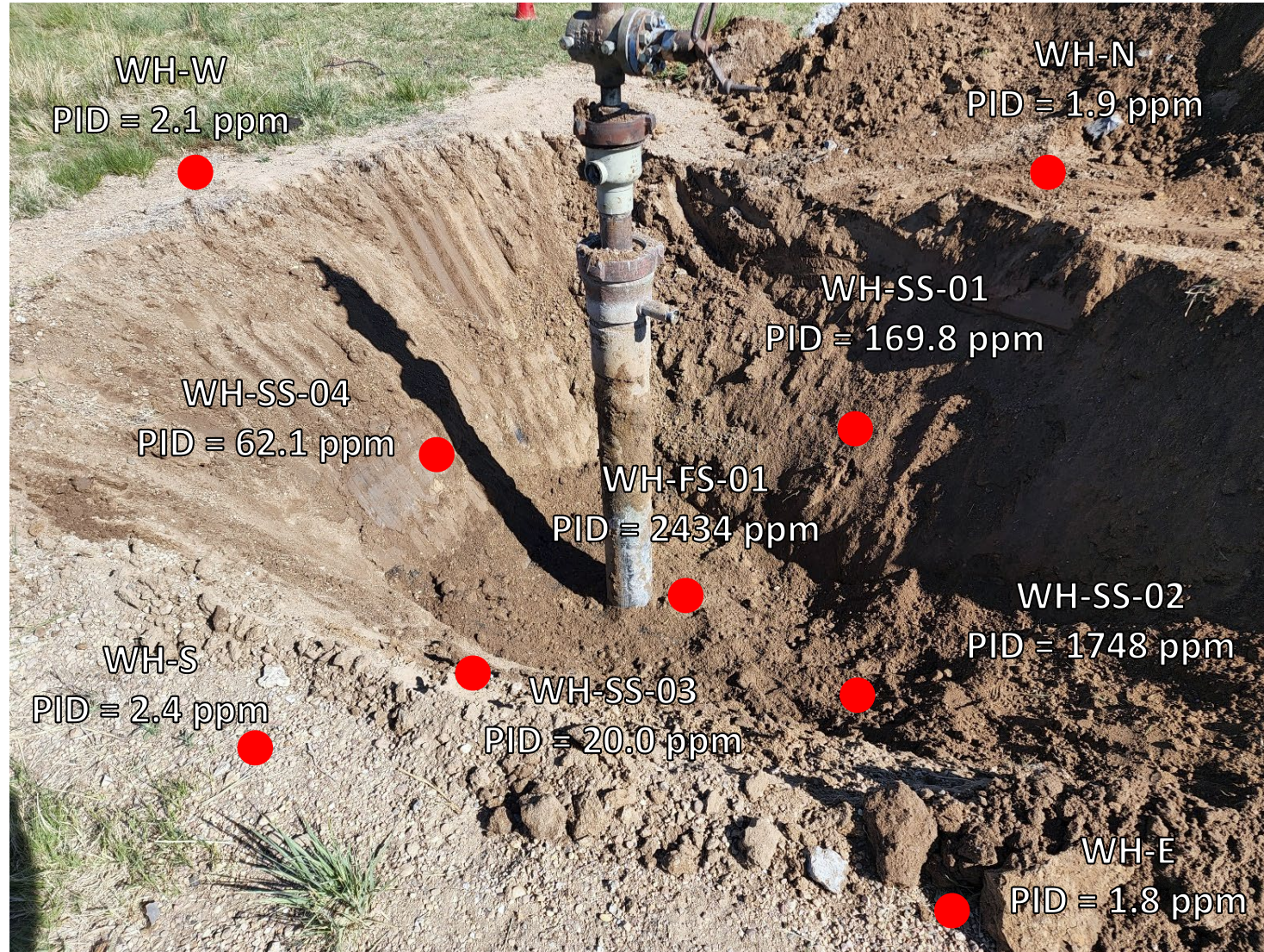
Pluss G #25-07
API # 05-123-12588
Remediation # 28764

Closure Assessment

June 2023



Wellhead Excavation – 06/30/23



Looking northwest

Strong petroleum hydrocarbon odor observed on east sidewall and base of excavation; no staining observed.



ATTACHMENT B

Laboratory Analytical Reports



July 19, 2023

Eagle Environmental Consulting, LLC

Martin C Eckert III

8000 W 44th Ave

Wheat Ridge CO 80033

Project Name - Noble - Pluss G #25-7

Project Number - [none]

Attached are your analytical results for Noble - Pluss G #25-7 received by Origins Laboratory, Inc. June 30, 2023. This project is associated with Origins project number Y306881-01.

The analytical results in the following report were analyzed under the guidelines of EPA Methods. These methods are identified as follows; "SW" are defined in SW-846, "EPA" are defined in 40CFR part 136 and "SM" are defined in the most current revision of Standard Methods For the Examination of Water and Wastewater.

The analytical results apply specifically to the samples and analyses specified per the attached Chain of Custody. As such, this report shall not be reproduced except in full, without the written approval of Origin's laboratory.

Unless otherwise noted, the analytical results for all soil samples are reported on a wet weight basis. All analytical analyses were performed under NELAP guidelines unless noted by a data qualifier.

Any holding time exceedances, deviations from the method specifications or deviations from Origins Laboratory's Standard Operating Procedures are outlined in the case narrative.

Thank you for selecting Origins for your analytical needs. Please contact us with any questions concerning this report, or if we can help with anything at all.

Origins Laboratory, Inc.
303.433.1322
o-squad@oelabinc.com



1725 Elk Place, Denver, CO 80211 | Phone: 303.433.1322 | Fax: 303.265.9645

Eagle Environmental Consulting, LLC
8000 W 44th Ave
Wheat Ridge CO 80033

Martin C Eckert III
Project Number: [none]
Project: Noble - Pluss G #25-7

CROSS REFERENCE REPORT

Sample ID	Laboratory ID	Matrix	Date Sampled	Date Received
WH-FS-01@6'	Y306881-01	Soil	June 30, 2023 0:00	06/30/2023 14:50
WH-SS-01@5'	Y306881-02	Soil	June 30, 2023 0:00	06/30/2023 14:50
WH-SS-02@5'	Y306881-03	Soil	June 30, 2023 0:00	06/30/2023 14:50
WH-SS-03@5'	Y306881-04	Soil	June 30, 2023 0:00	06/30/2023 14:50
WH-SS-04@5'	Y306881-05	Soil	June 30, 2023 0:00	06/30/2023 14:50

Origins Laboratory, Inc.



The results in this report apply to the samples analyzed in accordance with the chain of custody document. This analytical report must be reproduced in its entirety.

Eagle Environmental Consulting, LLC
 8000 W 44th Ave
 Wheat Ridge CO 80033

Martin C Eckert III
 Project Number: [none]
 Project: Noble - Pluss G #25-7

Origins Laboratory

F-012207-01-R1
 Effective Date: 01/09/12

Sample Receipt Checklist

Origins Work Order: YB-002881

Client: Eagle

Client Project ID: PLUSS G 25-07

Checklist Completed by: DH/KAS

Shipped Via: _____
 (UPS, FedEx, Hand Delivered, Pick-up, etc.)

Date/time completed: 1/30/23

Airbill #: N/A

Matrix(s) Received: (Check all that apply): Soil/Solid Water Other: _____

Cooler Number/Temperature: 1, 4 °C / _____ °C / _____ °C (Describe) _____ °C

Thermometer ID: 1004

Requirement Description	Yes	No	N/A	Comments (if any)
If samples require cooling, was the temperature between 0°C to ≤ 6°C ⁽¹⁾ ?	/			
Is there ice present (document if blue ice is used)	/			
Are custody seals present on cooler? (if so, document in comments if they are signed and dated, broken or intact)		/		
Are custody seals present on each sample container? (if so, document in comments if they are signed and dated, broken or intact)		/		
Were all samples received intact ⁽¹⁾ ?	/			
Was adequate sample volume provided ⁽¹⁾ ?	/			
Are short holding time analytes or samples with HTs due within 48 hours present ⁽¹⁾ ?		/		
Is a chain-of-custody (COC) present and filled out completely ⁽¹⁾ ?		/		Missing Sample + times on cell samples
Does the COC agree with the number and type of sample bottles received ⁽¹⁾ ?	/			
Do the sample IDs on the bottle labels match the COC ⁽¹⁾ ?	/			
Is the COC properly relinquished by the client with date and time recorded ⁽¹⁾ ?	/			
For volatiles in water – is there headspace (> ¼ inch bubble) present? If yes, contact client and note in narrative.			/	
Are samples preserved that require preservation and was it checked ⁽¹⁾ ? (note ID of confirmation instrument used in comments) / (preservation is not confirmed for subcontracted analyses in order to insure sample integrity)/(pH <2 for samples preserved with HNO ₃ , HCL, H ₂ SO ₄) / (pH >10 for samples preserved with NaAsO ₂ +NaOH, ZnAc+NaOH)			/	
Additional Comments (if any):				

⁽¹⁾If NO, then contact the client before proceeding with analysis and note date/time and person contacted as well as the corrective action to in the additional comments (above) and the case narrative.

Reviewed By: JB (Project Manager)

Date/Time Reviewed: 7-13-23

Origins Laboratory, Inc.



The results in this report apply to the samples analyzed in accordance with the chain of custody document. This analytical report must be reproduced in its entirety.

Eagle Environmental Consulting, LLC
 8000 W 44th Ave
 Wheat Ridge CO 80033

Martin C Eckert III
 Project Number: [none]
 Project: Noble - Pluss G #25-7

WH-FS-01@6'
6/30/2023 12:00:00AM

Analyte	Result	Min Detection Limit	Reporting Limit	Units	Dilution	Batch	Prepared	Analyzed	Notes
---------	--------	---------------------	-----------------	-------	----------	-------	----------	----------	-------

Origins Laboratory, Inc.
Y306881-01 (Soil)

Boron (DTPA Sorbitol)

Boron	0.489		0.0982	mg/L	1	B3G0307	07/03/2023	07/06/2023	
-------	-------	--	--------	------	---	---------	------------	------------	--

DRO/ORO by EPA 8015D

Diesel (C10-C28)	1480		25.0	mg/kg	1	B3G0501	07/05/2023	07/07/2023	
Residual Range Organics (C28-C40)	223		100	"	"	"	"	"	

Surrogate: o-Terphenyl	105 %		50-150			"	"	"	
------------------------	-------	--	--------	--	--	---	---	---	--

GBTEX+TMBs by 8260D

1,2,4-Trimethylbenzene	11.3		0.500	mg/kg	250	B3G0718	07/07/2023	07/12/2023	
1,3,5-Trimethylbenzene	14.2		0.500	"	"	"	"	"	
Benzene	ND		0.0500	"	25	"	"	07/07/2023	R-05, U
Ethylbenzene	6.83		0.0500	"	"	"	"	"	
Naphthalene	0.802		0.0950	"	"	"	"	"	R-05
Toluene	ND		0.0500	"	"	"	"	"	U
Xylenes, total	17.7		0.0500	"	"	"	"	"	
Gasoline Range Hydrocarbons	452		5.00	"	"	"	"	"	

Surrogate: 1,2-Dichloroethane-d4	98.1 %		70-130			"	"	"	
Surrogate: Toluene-d8	147 %		70-130			"	"	"	S-GC

Origins Laboratory, Inc.



The results in this report apply to the samples analyzed in accordance with the chain of custody document. This analytical report must be reproduced in its entirety.

Eagle Environmental Consulting, LLC
 8000 W 44th Ave
 Wheat Ridge CO 80033

Martin C Eckert III
 Project Number: [none]
 Project: Noble - Pluss G #25-7

WH-FS-01@6'

6/30/2023 12:00:00AM

Analyte	Result	Min Detection Limit	Reporting Limit	Units	Dilution	Batch	Prepared	Analyzed	Notes
---------	--------	---------------------	-----------------	-------	----------	-------	----------	----------	-------

Origins Laboratory, Inc.
Y306881-01 (Soil)

GBTEX+TMBs by 8260D

Surrogate: 4-Bromofluorobenzene	92.8 %		70-130			B3G07 18	07/07/2023	07/07/2023	
---------------------------------	--------	--	--------	--	--	-------------	------------	------------	--

Metals by Saturated Paste by EPA 6010

Calcium	0.571		0.499	meq/L	10	[CALC]	07/05/2023	07/06/2023	
Magnesium	ND		0.823	"	"	"	"	"	
Sodium	1.86		0.435	"	"	"	"	"	

PAH by 8270D SIM

1-Methylnaphthalene	1.06	0.00549	0.0101	mg/Kg	5	L691488	07/07/2023	07/10/2023	
2-Methylnaphthalene	1.23	0.00972	0.0101	"	"	"	"	"	
Acenaphthene	0.0913	0.00152	0.00335	"	"	"	"	"	
Anthracene	ND	0.00167	0.00335	"	"	"	"	"	
Benzo(a)anthracene	0.00484	0.00247	0.00335	"	"	"	"	"	
Benzo(a)pyrene	ND	0.00234	0.00335	"	"	"	"	"	
Benzo(b)fluoranthene	ND	0.00293	0.00335	"	"	"	"	"	
Benzo(k)fluoranthene	ND	0.00219	0.00335	"	"	"	"	"	
Chrysene	0.015	0.00312	0.00335	"	"	"	"	"	
Dibenz(a,h)anthracene	0.00422	0.00307	0.00335	"	"	"	"	"	
Fluoranthene	0.00386	0.00197	0.00335	"	"	"	"	"	
Fluorene	0.212	0.00143	0.00335	"	"	"	"	"	
Indeno(1,2,3-cd)pyrene	ND	0.00314	0.00335	"	"	"	"	"	

Origins Laboratory, Inc.



The results in this report apply to the samples analyzed in accordance with the chain of custody document. This analytical report must be reproduced in its entirety.

Eagle Environmental Consulting, LLC
 8000 W 44th Ave
 Wheat Ridge CO 80033

Martin C Eckert III
 Project Number: [none]
 Project: Noble - Pluss G #25-7

WH-FS-01@6'

6/30/2023 12:00:00AM

Analyte	Result	Min Detection Limit	Reporting Limit	Units	Dilution	Batch	Prepared	Analyzed	Notes
---------	--------	---------------------	-----------------	-------	----------	-------	----------	----------	-------

Waypoint Analytical, LLC.
Y306881-01 (Soil)

PAH by 8270D SIM

Pyrene	0.0114	0.00322	0.00335	mg/Kg	5	L691488	07/07/2023	07/10/2023	
--------	--------	---------	---------	-------	---	---------	------------	------------	--

Surrogate: 2-Fluorobiphenyl	60.4 %		33-115			"	"	"	
Surrogate: 4-Terphenyl-d14	54.4 %		33-122			"	"	"	
Surrogate: Nitrobenzene-d5	60.7 %		29-110			"	"	"	

pH in Soil by 9045D

pH	7.96			pH Units	1	B3G0512	07/05/2023	07/06/2023	
----	------	--	--	----------	---	---------	------------	------------	--

SAR by 20B Saturated Paste

SAR	2.96			SAR	1	B3G0504	07/05/2023	07/06/2023	
-----	------	--	--	-----	---	---------	------------	------------	--

Specific Conductance Mod. 9050A

Specific Conductance (EC)	0.596		0.00500	mmhos/cm	1	B3G0512	07/05/2023	07/06/2023	
---------------------------	-------	--	---------	----------	---	---------	------------	------------	--

Table 915 metals by EPA 6020B

Arsenic	2.09		0.0948	mg/kg	10	B3G1428	07/14/2023	07/17/2023	
Barium	63.8		9.48	"	"	"	"	"	
Cadmium	ND		0.0948	"	"	"	"	"	
Copper	ND		9.48	"	"	"	"	"	

Origins Laboratory, Inc.



The results in this report apply to the samples analyzed in accordance with the chain of custody document. This analytical report must be reproduced in its entirety.

Eagle Environmental Consulting, LLC
 8000 W 44th Ave
 Wheat Ridge CO 80033

Martin C Eckert III
 Project Number: [none]
 Project: Noble - Pluss G #25-7

WH-FS-01@6'

6/30/2023 12:00:00AM

Analyte	Result	Min Detection Limit	Reporting Limit	Units	Dilution	Batch	Prepared	Analyzed	Notes
---------	--------	---------------------	-----------------	-------	----------	-------	----------	----------	-------

Origins Laboratory, Inc.
Y306881-01 (Soil)

Table 915 metals by EPA 6020B

Lead	ND		9.48	mg/kg	10	B3G1428	07/14/2023	07/17/2023	
Nickel	ND		9.48	"	"	"	"	"	
Selenium	ND		0.0948	"	"	"	"	"	
Silver	ND		0.0948	"	"	"	"	"	
Zinc	ND		94.8	"	"	"	"	"	

Total Metals by 7196A

Chromium, Hexavalent	ND	0.25	0.513	mg/Kg	1	L693395	06/30/2023	07/18/2023	
----------------------	----	------	-------	-------	---	---------	------------	------------	--

Origins Laboratory, Inc.



The results in this report apply to the samples analyzed in accordance with the chain of custody document. This analytical report must be reproduced in its entirety.

Eagle Environmental Consulting, LLC
 8000 W 44th Ave
 Wheat Ridge CO 80033

Martin C Eckert III
 Project Number: [none]
 Project: Noble - Pluss G #25-7

WH-SS-01@5'
6/30/2023 12:00:00AM

Analyte	Result	Min Detection Limit	Reporting Limit	Units	Dilution	Batch	Prepared	Analyzed	Notes
---------	--------	---------------------	-----------------	-------	----------	-------	----------	----------	-------

Origins Laboratory, Inc.
Y306881-02 (Soil)

Boron (DTPA Sorbitol)

Boron	0.169		0.0984	mg/L	1	B3G0307	07/03/2023	07/06/2023	
-------	-------	--	--------	------	---	---------	------------	------------	--

DRO/ORO by EPA 8015D

Diesel (C10-C28)	ND		25.0	mg/kg	1	B3G0501	07/05/2023	07/07/2023	U
Residual Range Organics (C28-C40)	ND		100	"	"	"	"	"	U

Surrogate: o-Terphenyl	96.7 %		50-150			"	"	"	
------------------------	--------	--	--------	--	--	---	---	---	--

GBTEX+TMBs by 8260D

1,2,4-Trimethylbenzene	ND		0.00200	mg/kg	1	B3G0718	07/07/2023	07/07/2023	U
1,3,5-Trimethylbenzene	ND		0.00200	"	"	"	"	"	U
Benzene	ND		0.00200	"	"	"	"	"	U
Ethylbenzene	ND		0.00200	"	"	"	"	"	U
Naphthalene	ND		0.00380	"	"	"	"	"	U
Toluene	ND		0.00200	"	"	"	"	"	U
Xylenes, total	ND		0.00200	"	"	"	"	"	U
Gasoline Range Hydrocarbons	ND		0.200	"	"	"	"	"	U

Origins Laboratory, Inc.



The results in this report apply to the samples analyzed in accordance with the chain of custody document. This analytical report must be reproduced in its entirety.

Eagle Environmental Consulting, LLC
 8000 W 44th Ave
 Wheat Ridge CO 80033

Martin C Eckert III
 Project Number: [none]
 Project: Noble - Pluss G #25-7

WH-SS-01@5'

6/30/2023 12:00:00AM

Analyte	Result	Min Detection Limit	Reporting Limit	Units	Dilution	Batch	Prepared	Analyzed	Notes
---------	--------	---------------------	-----------------	-------	----------	-------	----------	----------	-------

Origins Laboratory, Inc.
Y306881-02 (Soil)

GBTEX+TMBs by 8260D

Surrogate: 1,2-Dichloroethane-d4	102 %		70-130			B3G07 18	07/07/2023	07/07/2023	
Surrogate: Toluene-d8	96.9 %		70-130			"	"	"	
Surrogate: 4-Bromofluorobenzene	96.1 %		70-130			"	"	"	

Metals by Saturated Paste by EPA 6010

Calcium	2.04		0.499	meq/L	10	[CALC]	07/05/2023	07/06/2023	
Magnesium	ND		0.823	"	"	"	"	"	
Sodium	ND		0.435	"	"	"	"	"	

PAH by 8270D SIM

1-Methylnaphthalene	ND	0.00109	0.00201	mg/Kg	1	L691488	07/07/2023	07/10/2023	
2-Methylnaphthalene	ND	0.00194	0.00201	"	"	"	"	"	
Acenaphthene	ND	0.000304	0.00067	"	"	"	"	"	
Anthracene	ND	0.000334	0.00067	"	"	"	"	"	
Benzo(a)anthracene	ND	0.000493	0.00067	"	"	"	"	"	
Benzo(a)pyrene	ND	0.000468	0.00067	"	"	"	"	"	
Benzo(b)fluoranthene	ND	0.000585	0.00067	"	"	"	"	"	
Benzo(k)fluoranthene	ND	0.000437	0.00067	"	"	"	"	"	
Chrysene	ND	0.000624	0.00067	"	"	"	"	"	
Dibenz(a,h)anthracene	ND	0.000614	0.00067	"	"	"	"	"	

Origins Laboratory, Inc.



The results in this report apply to the samples analyzed in accordance with the chain of custody document. This analytical report must be reproduced in its entirety.

Eagle Environmental Consulting, LLC
 8000 W 44th Ave
 Wheat Ridge CO 80033

Martin C Eckert III
 Project Number: [none]
 Project: Noble - Pluss G #25-7

WH-SS-01@5'
6/30/2023 12:00:00AM

Analyte	Result	Min Detection Limit	Reporting Limit	Units	Dilution	Batch	Prepared	Analyzed	Notes
---------	--------	---------------------	-----------------	-------	----------	-------	----------	----------	-------

Waypoint Analytical, LLC.
Y306881-02 (Soil)

PAH by 8270D SIM

Fluoranthene	ND	0.000394	0.00067	mg/Kg	1	L691488	07/07/2023	07/10/2023	
Fluorene	ND	0.000286	0.00067	"	"	"	"	"	
Indeno(1,2,3-cd)pyrene	ND	0.000627	0.00067	"	"	"	"	"	
Pyrene	ND	0.000643	0.00067	"	"	"	"	"	

Surrogate: 2-Fluorobiphenyl	49.5 %		33-115			"	"	"	
Surrogate: 4-Terphenyl-d14	52.6 %		33-122			"	"	"	
Surrogate: Nitrobenzene-d5	45.3 %		29-110			"	"	"	

pH in Soil by 9045D

pH	8.64			pH Units	1	B3G0512	07/05/2023	07/06/2023	
----	------	--	--	----------	---	---------	------------	------------	--

SAR by 20B Saturated Paste

SAR	0.362			SAR	1	B3G0504	07/05/2023	07/06/2023	
-----	-------	--	--	-----	---	---------	------------	------------	--

Specific Conductance Mod. 9050A

Specific Conductance (EC)	0.395		0.00500	mmhos/cm	1	B3G0512	07/05/2023	07/06/2023	
---------------------------	-------	--	---------	----------	---	---------	------------	------------	--

Origins Laboratory, Inc.



The results in this report apply to the samples analyzed in accordance with the chain of custody document. This analytical report must be reproduced in its entirety.

Eagle Environmental Consulting, LLC
 8000 W 44th Ave
 Wheat Ridge CO 80033

Martin C Eckert III
 Project Number: [none]
 Project: Noble - Pluss G #25-7

WH-SS-02@5'
6/30/2023 12:00:00AM

Analyte	Result	Min Detection Limit	Reporting Limit	Units	Dilution	Batch	Prepared	Analyzed	Notes
---------	--------	---------------------	-----------------	-------	----------	-------	----------	----------	-------

Origins Laboratory, Inc.
Y306881-03 (Soil)

Boron (DTPA Sorbitol)

Boron	ND		0.100	mg/L	1	B3G0307	07/03/2023	07/06/2023	
-------	----	--	-------	------	---	---------	------------	------------	--

DRO/ORO by EPA 8015D

Diesel (C10-C28)	75.8		25.0	mg/kg	1	B3G0501	07/05/2023	07/07/2023	
Residual Range Organics (C28-C40)	ND		100	"	"	"	"	"	U

Surrogate: o-Terphenyl	98.1 %		50-150			"	"	"	
------------------------	--------	--	--------	--	--	---	---	---	--

GBTEX+TMBs by 8260D

1,2,4-Trimethylbenzene	ND		0.00200	mg/kg	1	B3G0718	07/07/2023	07/07/2023	U
1,3,5-Trimethylbenzene	0.0152		0.00200	"	"	"	"	"	
Benzene	ND		0.00200	"	"	"	"	"	U
Ethylbenzene	ND		0.00200	"	"	"	"	"	U
Naphthalene	ND		0.00380	"	"	"	"	"	U
Toluene	ND		0.00200	"	"	"	"	"	U
Xylenes, total	ND		0.00200	"	"	"	"	"	U
Gasoline Range Hydrocarbons	1.12		0.200	"	"	"	"	"	

Origins Laboratory, Inc.



The results in this report apply to the samples analyzed in accordance with the chain of custody document. This analytical report must be reproduced in its entirety.

Eagle Environmental Consulting, LLC
 8000 W 44th Ave
 Wheat Ridge CO 80033

Martin C Eckert III
 Project Number: [none]
 Project: Noble - Pluss G #25-7

WH-SS-02@5'
6/30/2023 12:00:00AM

Analyte	Result	Min Detection Limit	Reporting Limit	Units	Dilution	Batch	Prepared	Analyzed	Notes
---------	--------	---------------------	-----------------	-------	----------	-------	----------	----------	-------

Origins Laboratory, Inc.
Y306881-03 (Soil)

GBTEX+TMBs by 8260D

Surrogate: 1,2-Dichloroethane-d4	102 %		70-130			B3G07 18	07/07/2023	07/07/2023	
Surrogate: Toluene-d8	97.1 %		70-130			"	"	"	
Surrogate: 4-Bromofluorobenzene	103 %		70-130			"	"	"	

Metals by Saturated Paste by EPA 6010

Calcium	2.59		0.499	meq/L	10	[CALC]	07/05/2023	07/06/2023	
Magnesium	ND		0.823	"	"	"	"	"	
Sodium	ND		0.435	"	"	"	"	"	

PAH by 8270D SIM

1-Methylnaphthalene	0.0108	0.00109	0.00201	mg/Kg	1	L691488	07/07/2023	07/10/2023	
2-Methylnaphthalene	0.003	0.00194	0.00201	"	"	"	"	"	
Acenaphthene	0.00209	0.000304	0.00067	"	"	"	"	"	
Anthracene	ND	0.000334	0.00067	"	"	"	"	"	
Benzo(a)anthracene	0.000647	0.000493	0.00067	"	"	"	"	"	J
Benzo(a)pyrene	ND	0.000468	0.00067	"	"	"	"	"	
Benzo(b)fluoranthene	0.00138	0.000585	0.00067	"	"	"	"	"	
Benzo(k)fluoranthene	0.000662	0.000437	0.00067	"	"	"	"	"	J
Chrysene	0.00181	0.000624	0.00067	"	"	"	"	"	
Dibenz(a,h)anthracene	0.00128	0.000614	0.00067	"	"	"	"	"	
Fluoranthene	0.000395	0.000394	0.00067	"	"	"	"	"	J

Origins Laboratory, Inc.



The results in this report apply to the samples analyzed in accordance with the chain of custody document. This analytical report must be reproduced in its entirety.

Eagle Environmental Consulting, LLC
 8000 W 44th Ave
 Wheat Ridge CO 80033

Martin C Eckert III
 Project Number: [none]
 Project: Noble - Pluss G #25-7

WH-SS-02@5'
6/30/2023 12:00:00AM

Analyte	Result	Min Detection Limit	Reporting Limit	Units	Dilution	Batch	Prepared	Analyzed	Notes
---------	--------	---------------------	-----------------	-------	----------	-------	----------	----------	-------

Waypoint Analytical, LLC.
Y306881-03 (Soil)

PAH by 8270D SIM

Fluorene	0.013	0.000286	0.00067	mg/Kg	1	L691488	07/07/2023	07/10/2023	
Indeno(1,2,3-cd)pyrene	0.00135	0.000627	0.00067	"	"	"	"	"	
Pyrene	0.00114	0.000643	0.00067	"	"	"	"	"	

Surrogate: 2-Fluorobiphenyl	48.6 %		33-115			"	"	"	
Surrogate: 4-Terphenyl-d14	53.2 %		33-122			"	"	"	
Surrogate: Nitrobenzene-d5	46.2 %		29-110			"	"	"	

pH in Soil by 9045D

pH	8.71			pH Units	1	B3G0512	07/05/2023	07/06/2023	
----	------	--	--	----------	---	---------	------------	------------	--

SAR by 20B Saturated Paste

SAR	0.178			SAR	1	B3G0504	07/05/2023	07/06/2023	
-----	-------	--	--	-----	---	---------	------------	------------	--

Specific Conductance Mod. 9050A

Specific Conductance (EC)	0.361		0.00500	mmhos/cm	1	B3G0512	07/05/2023	07/06/2023	
---------------------------	-------	--	---------	----------	---	---------	------------	------------	--

Table 915 metals by EPA 6020B

Arsenic	1.89		0.0911	mg/kg	10	B3G1428	07/14/2023	07/17/2023	
Barium	49.4		9.11	"	"	"	"	"	

Origins Laboratory, Inc.



The results in this report apply to the samples analyzed in accordance with the chain of custody document. This analytical report must be reproduced in its entirety.

Eagle Environmental Consulting, LLC
 8000 W 44th Ave
 Wheat Ridge CO 80033

Martin C Eckert III
 Project Number: [none]
 Project: Noble - Pluss G #25-7

WH-SS-02@5'

6/30/2023 12:00:00AM

Analyte	Result	Min Detection Limit	Reporting Limit	Units	Dilution	Batch	Prepared	Analyzed	Notes
---------	--------	---------------------	-----------------	-------	----------	-------	----------	----------	-------

Origins Laboratory, Inc.
Y306881-03 (Soil)

Table 915 metals by EPA 6020B

Cadmium	0.116		0.0911	mg/kg	10	B3G1428	07/14/2023	07/17/2023	
Copper	ND		9.11	"	"	"	"	"	
Lead	30.2		9.11	"	"	"	"	"	
Nickel	ND		9.11	"	"	"	"	"	
Selenium	0.0966		0.0911	"	"	"	"	"	
Silver	ND		0.0911	"	"	"	"	"	
Zinc	ND		91.1	"	"	"	"	"	

Total Metals by 7196A

Chromium, Hexavalent	ND	0.244	0.5	mg/Kg	1	L693395	06/30/2023	07/18/2023	
----------------------	----	-------	-----	-------	---	---------	------------	------------	--

Origins Laboratory, Inc.



The results in this report apply to the samples analyzed in accordance with the chain of custody document. This analytical report must be reproduced in its entirety.

Eagle Environmental Consulting, LLC
 8000 W 44th Ave
 Wheat Ridge CO 80033

Martin C Eckert III
 Project Number: [none]
 Project: Noble - Pluss G #25-7

WH-SS-03@5'
6/30/2023 12:00:00AM

Analyte	Result	Min Detection Limit	Reporting Limit	Units	Dilution	Batch	Prepared	Analyzed	Notes
---------	--------	---------------------	-----------------	-------	----------	-------	----------	----------	-------

Origins Laboratory, Inc.
Y306881-04 (Soil)

Boron (DTPA Sorbitol)

Boron	0.181		0.100	mg/L	1	B3G0307	07/03/2023	07/06/2023	
-------	-------	--	-------	------	---	---------	------------	------------	--

DRO/ORO by EPA 8015D

Diesel (C10-C28)	ND		25.0	mg/kg	1	B3G0501	07/05/2023	07/07/2023	U
Residual Range Organics (C28-C40)	ND		100	"	"	"	"	"	U

Surrogate: o-Terphenyl	101 %		50-150			"	"	"	
------------------------	-------	--	--------	--	--	---	---	---	--

GBTEX+TMBs by 8260D

1,2,4-Trimethylbenzene	ND		0.00200	mg/kg	1	B3G0718	07/07/2023	07/07/2023	U
1,3,5-Trimethylbenzene	ND		0.00200	"	"	"	"	"	U
Benzene	ND		0.00200	"	"	"	"	"	U
Ethylbenzene	ND		0.00200	"	"	"	"	"	U
Naphthalene	ND		0.00380	"	"	"	"	"	U
Toluene	ND		0.00200	"	"	"	"	"	U
Xylenes, total	ND		0.00200	"	"	"	"	"	U
Gasoline Range Hydrocarbons	ND		0.200	"	"	"	"	"	U

Origins Laboratory, Inc.



The results in this report apply to the samples analyzed in accordance with the chain of custody document. This analytical report must be reproduced in its entirety.

Eagle Environmental Consulting, LLC
 8000 W 44th Ave
 Wheat Ridge CO 80033

Martin C Eckert III
 Project Number: [none]
 Project: Noble - Pluss G #25-7

WH-SS-03@5'

6/30/2023 12:00:00AM

Analyte	Result	Min Detection Limit	Reporting Limit	Units	Dilution	Batch	Prepared	Analyzed	Notes
---------	--------	---------------------	-----------------	-------	----------	-------	----------	----------	-------

Origins Laboratory, Inc.
Y306881-04 (Soil)

GBTEX+TMBs by 8260D

Surrogate: 1,2-Dichloroethane-d4	104 %		70-130			B3G07 18	07/07/2023	07/07/2023	
Surrogate: Toluene-d8	92.3 %		70-130			"	"	"	
Surrogate: 4-Bromofluorobenzene	97.2 %		70-130			"	"	"	

Metals by Saturated Paste by EPA 6010

Calcium	5.18		0.499	meq/L	10	[CALC]	07/05/2023	07/06/2023	
Magnesium	1.28		0.823	"	"	"	"	"	
Sodium	ND		0.435	"	"	"	"	"	

PAH by 8270D SIM

1-Methylnaphthalene	ND	0.00109	0.00201	mg/Kg	1	L691488	07/07/2023	07/10/2023	
2-Methylnaphthalene	ND	0.00194	0.00201	"	"	"	"	"	
Acenaphthene	ND	0.000304	0.00067	"	"	"	"	"	
Anthracene	ND	0.000334	0.00067	"	"	"	"	"	
Benzo(a)anthracene	ND	0.000493	0.00067	"	"	"	"	"	
Benzo(a)pyrene	ND	0.000468	0.00067	"	"	"	"	"	
Benzo(b)fluoranthene	ND	0.000585	0.00067	"	"	"	"	"	
Benzo(k)fluoranthene	ND	0.000437	0.00067	"	"	"	"	"	
Chrysene	ND	0.000624	0.00067	"	"	"	"	"	
Dibenz(a,h)anthracene	ND	0.000614	0.00067	"	"	"	"	"	

Origins Laboratory, Inc.



The results in this report apply to the samples analyzed in accordance with the chain of custody document. This analytical report must be reproduced in its entirety.

Eagle Environmental Consulting, LLC
 8000 W 44th Ave
 Wheat Ridge CO 80033

Martin C Eckert III
 Project Number: [none]
 Project: Noble - Pluss G #25-7

WH-SS-03@5'
6/30/2023 12:00:00AM

Analyte	Result	Min Detection Limit	Reporting Limit	Units	Dilution	Batch	Prepared	Analyzed	Notes
---------	--------	---------------------	-----------------	-------	----------	-------	----------	----------	-------

Waypoint Analytical, LLC.
Y306881-04 (Soil)

PAH by 8270D SIM

Fluoranthene	ND	0.000394	0.00067	mg/Kg	1	L691488	07/07/2023	07/10/2023	
Fluorene	ND	0.000286	0.00067	"	"	"	"	"	
Indeno(1,2,3-cd)pyrene	ND	0.000627	0.00067	"	"	"	"	"	
Pyrene	ND	0.000643	0.00067	"	"	"	"	"	

Surrogate: 2-Fluorobiphenyl	51.1 %		33-115			"	"	"	
Surrogate: 4-Terphenyl-d14	62.2 %		33-122			"	"	"	
Surrogate: Nitrobenzene-d5	49.5 %		29-110			"	"	"	

pH in Soil by 9045D

pH	7.73			pH Units	1	B3G0512	07/05/2023	07/06/2023	
----	------	--	--	----------	---	---------	------------	------------	--

SAR by 20B Saturated Paste

SAR	0.187			SAR	1	B3G0504	07/05/2023	07/06/2023	
-----	-------	--	--	-----	---	---------	------------	------------	--

Specific Conductance Mod. 9050A

Specific Conductance (EC)	0.817		0.00500	mmhos/cm	1	B3G0512	07/05/2023	07/06/2023	
---------------------------	-------	--	---------	----------	---	---------	------------	------------	--

Origins Laboratory, Inc.



The results in this report apply to the samples analyzed in accordance with the chain of custody document. This analytical report must be reproduced in its entirety.

Eagle Environmental Consulting, LLC
 8000 W 44th Ave
 Wheat Ridge CO 80033

Martin C Eckert III
 Project Number: [none]
 Project: Noble - Pluss G #25-7

WH-SS-04@5'
6/30/2023 12:00:00AM

Analyte	Result	Min Detection Limit	Reporting Limit	Units	Dilution	Batch	Prepared	Analyzed	Notes
---------	--------	---------------------	-----------------	-------	----------	-------	----------	----------	-------

Origins Laboratory, Inc.
Y306881-05 (Soil)

Boron (DTPA Sorbitol)

Boron	0.143		0.0995	mg/L	1	B3G0307	07/03/2023	07/06/2023	
-------	-------	--	--------	------	---	---------	------------	------------	--

DRO/ORO by EPA 8015D

Diesel (C10-C28)	ND		25.0	mg/kg	1	B3G0501	07/05/2023	07/07/2023	U
Residual Range Organics (C28-C40)	ND		100	"	"	"	"	"	U

Surrogate: o-Terphenyl	96.2 %		50-150			"	"	"	
------------------------	--------	--	--------	--	--	---	---	---	--

GBTEX+TMBs by 8260D

1,2,4-Trimethylbenzene	ND		0.00200	mg/kg	1	B3G0718	07/07/2023	07/07/2023	U
1,3,5-Trimethylbenzene	ND		0.00200	"	"	"	"	"	U
Benzene	ND		0.00200	"	"	"	"	"	U
Ethylbenzene	ND		0.00200	"	"	"	"	"	U
Naphthalene	ND		0.00380	"	"	"	"	"	U
Toluene	ND		0.00200	"	"	"	"	"	U
Xylenes, total	ND		0.00200	"	"	"	"	"	U
Gasoline Range Hydrocarbons	ND		0.200	"	"	"	"	"	U

Origins Laboratory, Inc.



The results in this report apply to the samples analyzed in accordance with the chain of custody document. This analytical report must be reproduced in its entirety.

Eagle Environmental Consulting, LLC
 8000 W 44th Ave
 Wheat Ridge CO 80033

Martin C Eckert III
 Project Number: [none]
 Project: Noble - Pluss G #25-7

WH-SS-04@5'
6/30/2023 12:00:00AM

Analyte	Result	Min Detection Limit	Reporting Limit	Units	Dilution	Batch	Prepared	Analyzed	Notes
---------	--------	---------------------	-----------------	-------	----------	-------	----------	----------	-------

Origins Laboratory, Inc.
Y306881-05 (Soil)

GBTEX+TMBs by 8260D

Surrogate: 1,2-Dichloroethane-d4	103 %		70-130			B3G07 18	07/07/2023	07/07/2023	
Surrogate: Toluene-d8	93.2 %		70-130			"	"	"	
Surrogate: 4-Bromofluorobenzene	98.9 %		70-130			"	"	"	

Metals by Saturated Paste by EPA 6010

Calcium	2.48		0.499	meq/L	10	[CALC]	07/05/2023	07/06/2023	
Magnesium	ND		0.823	"	"	"	"	"	
Sodium	0.650		0.435	"	"	"	"	"	

PAH by 8270D SIM

1-Methylnaphthalene	ND	0.00109	0.00201	mg/Kg	1	L691488	07/07/2023	07/10/2023	
2-Methylnaphthalene	ND	0.00194	0.00201	"	"	"	"	"	
Acenaphthene	ND	0.000304	0.00067	"	"	"	"	"	
Anthracene	ND	0.000334	0.00067	"	"	"	"	"	
Benzo(a)anthracene	ND	0.000493	0.00067	"	"	"	"	"	
Benzo(a)pyrene	ND	0.000468	0.00067	"	"	"	"	"	
Benzo(b)fluoranthene	ND	0.000585	0.00067	"	"	"	"	"	
Benzo(k)fluoranthene	ND	0.000437	0.00067	"	"	"	"	"	
Chrysene	ND	0.000624	0.00067	"	"	"	"	"	
Dibenz(a,h)anthracene	ND	0.000614	0.00067	"	"	"	"	"	

Origins Laboratory, Inc.



The results in this report apply to the samples analyzed in accordance with the chain of custody document. This analytical report must be reproduced in its entirety.

Eagle Environmental Consulting, LLC
 8000 W 44th Ave
 Wheat Ridge CO 80033

Martin C Eckert III
 Project Number: [none]
 Project: Noble - Pluss G #25-7

WH-SS-04@5'
6/30/2023 12:00:00AM

Analyte	Result	Min Detection Limit	Reporting Limit	Units	Dilution	Batch	Prepared	Analyzed	Notes
---------	--------	---------------------	-----------------	-------	----------	-------	----------	----------	-------

Waypoint Analytical, LLC.
Y306881-05 (Soil)

PAH by 8270D SIM

Fluoranthene	ND	0.000394	0.00067	mg/Kg	1	L691488	07/07/2023	07/10/2023	
Fluorene	0.00079	0.000286	0.00067	"	"	"	"	"	
Indeno(1,2,3-cd)pyrene	ND	0.000627	0.00067	"	"	"	"	"	
Pyrene	ND	0.000643	0.00067	"	"	"	"	"	

Surrogate: 2-Fluorobiphenyl	50.5 %		33-115			"	"	"	
Surrogate: 4-Terphenyl-d14	54.4 %		33-122			"	"	"	
Surrogate: Nitrobenzene-d5	49.2 %		29-110			"	"	"	

pH in Soil by 9045D

pH	9.50			pH Units	1	B3G0512	07/05/2023	07/06/2023	
----	-------------	--	--	----------	---	---------	------------	------------	--

SAR by 20B Saturated Paste

SAR	0.532			SAR	1	B3G0504	07/05/2023	07/06/2023	
-----	--------------	--	--	-----	---	---------	------------	------------	--

Specific Conductance Mod. 9050A

Specific Conductance (EC)	0.660		0.00500	mmhos/cm	1	B3G0512	07/05/2023	07/06/2023	
---------------------------	--------------	--	---------	----------	---	---------	------------	------------	--

Origins Laboratory, Inc.



The results in this report apply to the samples analyzed in accordance with the chain of custody document. This analytical report must be reproduced in its entirety.

Eagle Environmental Consulting, LLC
 8000 W 44th Ave
 Wheat Ridge CO 80033

Martin C Eckert III
 Project Number: [none]
 Project: Noble - Pluss G #25-7

Extractable Petroleum Hydrocarbons by 8015D - Quality Control
Origins Laboratory, Inc.

Analyte	Result	Reporting Limit	Units	Spike Level	Source Result	%REC	%REC Limits	RPD	RPD Limit	Notes
Batch B3G0501 - EPA 3550B										
Blank (B3G0501-BLK1)										
					Prepared: 07/05/2023 Analyzed: 07/07/2023					
Diesel (C10-C28)	ND	25.0	mg/kg							U
Residual Range Organics (C28-C40)	ND	100	"							U
Surrogate: o-Terphenyl	26		"	24.9		106	50-150			

Origins Laboratory, Inc.



The results in this report apply to the samples analyzed in accordance with the chain of custody document. This analytical report must be reproduced in its entirety.

Eagle Environmental Consulting, LLC
 8000 W 44th Ave
 Wheat Ridge CO 80033

Martin C Eckert III
 Project Number: [none]
 Project: Noble - Pluss G #25-7

Extractable Petroleum Hydrocarbons by 8015D - Quality Control
Origins Laboratory, Inc.

Analyte	Result	Reporting Limit	Units	Spike Level	Source Result	%REC	%REC Limits	RPD	RPD Limit	Notes
---------	--------	-----------------	-------	-------------	---------------	------	-------------	-----	-----------	-------

Batch B3G0501 - EPA 3550B

LCS (B3G0501-BS1)

Prepared: 07/05/2023 Analyzed: 07/07/2023

Diesel (C10-C28)	896	50.0	mg/kg	1000		89.6	70-130			
Residual Range Organics (C28-C40)	1130	200	"	1000		113	70-130			
Surrogate: o-Terphenyl	48		"	49.8		95.9	50-150			

Origins Laboratory, Inc.



The results in this report apply to the samples analyzed in accordance with the chain of custody document. This analytical report must be reproduced in its entirety.

Eagle Environmental Consulting, LLC
 8000 W 44th Ave
 Wheat Ridge CO 80033

Martin C Eckert III
 Project Number: [none]
 Project: Noble - Pluss G #25-7

Extractable Petroleum Hydrocarbons by 8015D - Quality Control
Origins Laboratory, Inc.

Analyte	Result	Reporting Limit	Units	Spike Level	Source Result	%REC	%REC Limits	RPD	RPD Limit	Notes
---------	--------	-----------------	-------	-------------	---------------	------	-------------	-----	-----------	-------

Batch B3G0501 - EPA 3550B

Matrix Spike (B3G0501-MS1)	Source: Y306881-01			Prepared: 07/05/2023 Analyzed: 07/07/2023						
Diesel (C10-C28)	2160	50.0	mg/kg	1000	1480	67.6	70-130			QM-07
Residual Range Organics (C28-C40)	1170	200	"	1000	223	94.7	70-130			
Surrogate: o-Terphenyl	69		"	49.8		139	50-150			

Origins Laboratory, Inc.



The results in this report apply to the samples analyzed in accordance with the chain of custody document. This analytical report must be reproduced in its entirety.

Eagle Environmental Consulting, LLC
 8000 W 44th Ave
 Wheat Ridge CO 80033

Martin C Eckert III
 Project Number: [none]
 Project: Noble - Pluss G #25-7

Extractable Petroleum Hydrocarbons by 8015D - Quality Control
Origins Laboratory, Inc.

Analyte	Result	Reporting Limit	Units	Spike Level	Source Result	%REC	%REC Limits	RPD	RPD Limit	Notes
---------	--------	-----------------	-------	-------------	---------------	------	-------------	-----	-----------	-------

Batch B3G0501 - EPA 3550B

Matrix Spike Dup (B3G0501-MSD1)	Source: Y306881-01			Prepared: 07/05/2023 Analyzed: 07/07/2023						
Diesel (C10-C28)	2290	50.0	mg/kg	1000	1480	80.6	70-130	5.86	35	
Residual Range Organics (C28-C40)	1200	200	"	1000	223	97.4	70-130	2.26	35	
Surrogate: o-Terphenyl	51		"	49.8		102	50-150			

Origins Laboratory, Inc.



The results in this report apply to the samples analyzed in accordance with the chain of custody document. This analytical report must be reproduced in its entirety.

Eagle Environmental Consulting, LLC
 8000 W 44th Ave
 Wheat Ridge CO 80033

Martin C Eckert III
 Project Number: [none]
 Project: Noble - Pluss G #25-7

Extractable Petroleum Hydrocarbons by 8015D - Quality Control
Origins Laboratory, Inc.

Analyte	Result	Reporting Limit	Units	Spike Level	Source Result	%REC	%REC Limits	RPD	RPD Limit	Notes
---------	--------	-----------------	-------	-------------	---------------	------	-------------	-----	-----------	-------

Batch B3G0718 - EPA 5030 (soil)

Blank (B3G0718-BLK1)

Prepared: 07/07/2023 Analyzed: 07/07/2023

1,2,4-Trimethylbenzene	ND	0.00200	mg/kg							U
1,3,5-Trimethylbenzene	ND	0.00200	"							U
Benzene	ND	0.00200	"							U
Ethylbenzene	ND	0.00200	"							U
Naphthalene	ND	0.00380	"							U
Toluene	ND	0.00200	"							U
Xylenes, total	ND	0.00200	"							U
Gasoline Range Hydrocarbons	ND	0.200	"							U
Surrogate: 1,2-Dichloroethane-d4	0.12		"	0.125		97.1	70-130			
Surrogate: Toluene-d8	0.12		"	0.125		97.3	70-130			
Surrogate: 4-Bromofluorobenzene	0.12		"	0.125		93.4	70-130			

Origins Laboratory, Inc.



The results in this report apply to the samples analyzed in accordance with the chain of custody document. This analytical report must be reproduced in its entirety.

Eagle Environmental Consulting, LLC
 8000 W 44th Ave
 Wheat Ridge CO 80033

Martin C Eckert III
 Project Number: [none]
 Project: Noble - Pluss G #25-7

Volatile Organic Compounds by GC/MS SW846 8260D - Quality Control
Origins Laboratory, Inc.

Analyte	Result	Reporting Limit	Units	Spike Level	Source Result	%REC	%REC Limits	RPD	RPD Limit	Notes
---------	--------	-----------------	-------	-------------	---------------	------	-------------	-----	-----------	-------

Batch B3G0718 - EPA 5030 (soil)

LCS (B3G0718-BS1)

Prepared: 07/07/2023 Analyzed: 07/07/2023

1,2,4-Trimethylbenzene	0.101	0.00200	mg/kg	0.100		101	70-130			
1,3,5-Trimethylbenzene	0.104	0.00200	"	0.100		104	70-130			
Benzene	0.0925	0.00200	"	0.100		92.5	70-130			
Ethylbenzene	0.105	0.00200	"	0.100		105	70-130			
Naphthalene	0.101	0.00380	"	0.100		101	70-130			
Toluene	0.100	0.00200	"	0.100		100	70-130			
o-Xylene	0.105	0.00200	"	0.100		105	70-130			
m,p-Xylene	0.207	0.00400	"	0.200		103	70-130			
Surrogate: 1,2-Dichloroethane-d4	0.12		"	0.125		92.8	70-130			
Surrogate: Toluene-d8	0.13		"	0.125		105	70-130			
Surrogate: 4-Bromofluorobenzene	0.12		"	0.125		99.1	70-130			

Origins Laboratory, Inc.



The results in this report apply to the samples analyzed in accordance with the chain of custody document. This analytical report must be reproduced in its entirety.

Eagle Environmental Consulting, LLC
 8000 W 44th Ave
 Wheat Ridge CO 80033

Martin C Eckert III
 Project Number: [none]
 Project: Noble - Pluss G #25-7

Volatile Organic Compounds by GC/MS SW846 8260D - Quality Control
Origins Laboratory, Inc.

Analyte	Result	Reporting Limit	Units	Spike Level	Source Result	%REC	%REC Limits	RPD	RPD Limit	Notes
---------	--------	-----------------	-------	-------------	---------------	------	-------------	-----	-----------	-------

Batch B3G0718 - EPA 5030 (soil)

Matrix Spike (B3G0718-MS1)	Source: Y306881-02		Prepared: 07/07/2023 Analyzed: 07/07/2023							
1,2,4-Trimethylbenzene	0.0898	0.00200	mg/kg	0.100	ND	89.8	70-130			
1,3,5-Trimethylbenzene	0.0976	0.00200	"	0.100	ND	97.6	70-130			
Benzene	0.0843	0.00200	"	0.100	ND	84.3	70-130			
Ethylbenzene	0.101	0.00200	"	0.100	ND	101	70-130			
Naphthalene	0.0920	0.00380	"	0.100	ND	92.0	70-130			
Toluene	0.0939	0.00200	"	0.100	ND	93.9	70-130			
o-Xylene	0.100	0.00200	"	0.100	ND	100	70-130			
m,p-Xylene	0.198	0.00400	"	0.200	ND	99.1	70-130			
Surrogate: 1,2-Dichloroethane-d4	0.12		"	0.125		92.6	70-130			
Surrogate: Toluene-d8	0.13		"	0.125		101	70-130			
Surrogate: 4-Bromofluorobenzene	0.13		"	0.125		101	70-130			

Origins Laboratory, Inc.



The results in this report apply to the samples analyzed in accordance with the chain of custody document. This analytical report must be reproduced in its entirety.

Eagle Environmental Consulting, LLC
 8000 W 44th Ave
 Wheat Ridge CO 80033

Martin C Eckert III
 Project Number: [none]
 Project: Noble - Pluss G #25-7

Volatile Organic Compounds by GC/MS SW846 8260D - Quality Control
Origins Laboratory, Inc.

Analyte	Result	Reporting Limit	Units	Spike Level	Source Result	%REC	%REC Limits	RPD	RPD Limit	Notes
---------	--------	-----------------	-------	-------------	---------------	------	-------------	-----	-----------	-------

Batch B3G0718 - EPA 5030 (soil)

Matrix Spike Dup (B3G0718-MSD1)	Source: Y306881-02		Prepared: 07/07/2023 Analyzed: 07/07/2023							
1,2,4-Trimethylbenzene	0.0508	0.00200	mg/kg	0.100	ND	50.8	70-130	55.4	20	QM-07
1,3,5-Trimethylbenzene	0.0629	0.00200	"	0.100	ND	62.9	70-130	43.2	20	QM-07
Benzene	0.0653	0.00200	"	0.100	ND	65.3	70-130	25.4	20	QM-07
Ethylbenzene	0.0683	0.00200	"	0.100	ND	68.3	70-130	39.0	20	QM-07
Naphthalene	0.0634	0.00380	"	0.100	ND	63.4	70-130	36.8	20	QM-07
Toluene	0.0663	0.00200	"	0.100	ND	66.3	70-130	34.4	20	QM-07
o-Xylene	0.0688	0.00200	"	0.100	ND	68.8	70-130	37.4	20	QM-07
m,p-Xylene	0.127	0.00400	"	0.200	ND	63.4	70-130	43.9	20	QM-07
Surrogate: 1,2-Dichloroethane-d4	0.13		"	0.125		103	70-130			
Surrogate: Toluene-d8	0.12		"	0.125		96.4	70-130			
Surrogate: 4-Bromofluorobenzene	0.13		"	0.125		102	70-130			

Origins Laboratory, Inc.



The results in this report apply to the samples analyzed in accordance with the chain of custody document. This analytical report must be reproduced in its entirety.

Eagle Environmental Consulting, LLC
 8000 W 44th Ave
 Wheat Ridge CO 80033

Martin C Eckert III
 Project Number: [none]
 Project: Noble - Pluss G #25-7

Volatile Organic Compounds by GC/MS SW846 8260D - Quality Control
Origins Laboratory, Inc.

Analyte	Result	Reporting Limit	Units	Spike Level	Source Result	%REC	%REC Limits	RPD	RPD Limit	Notes
---------	--------	-----------------	-------	-------------	---------------	------	-------------	-----	-----------	-------

Metals by EPA 6000/7000 Series Methods - Quality Control
Origins Laboratory, Inc.

Analyte	Result	Reporting Limit	Units	Spike Level	Source Result	%REC	%REC Limits	RPD	RPD Limit	Notes
---------	--------	-----------------	-------	-------------	---------------	------	-------------	-----	-----------	-------

Batch B3G1428 - EPA 3050B

Blank (B3G1428-BLK1)

Prepared: 07/14/2023 Analyzed: 07/17/2023

Arsenic	ND	0.000100	mg/kg						
Barium	ND	0.0100	"						
Cadmium	ND	0.000100	"						
Copper	ND	0.0100	"						
Lead	ND	0.0100	"						
Nickel	ND	0.0100	"						
Selenium	ND	0.000100	"						
Silver	ND	0.000100	"						
Zinc	ND	0.100	"						

LCS (B3G1428-BS1)

Prepared: 07/14/2023 Analyzed: 07/17/2023

Arsenic	0.0534	0.000100	mg/kg	0.0500		107	80-120		
Barium	5.48	0.0100	"	5.00		110	80-120		
Cadmium	0.0515	0.000100	"	0.0500		103	80-120		
Copper	0.558	0.0100	"	0.500		112	80-120		
Lead	0.0528	0.0100	"	0.0500		106	80-120		
Nickel	0.0545	0.0100	"	0.0500		109	80-120		
Selenium	0.0550	0.000100	"	0.0500		110	80-120		
Silver	0.0518	0.000100	"	0.0500		104	80-120		
Zinc	0.527	0.100	"	0.500		105	80-120		

Matrix Spike (B3G1428-MS1)

Source: Y307283-01

Prepared: 07/14/2023 Analyzed: 07/17/2023

Origins Laboratory, Inc.



The results in this report apply to the samples analyzed in accordance with the chain of custody document. This analytical report must be reproduced in its entirety.

Eagle Environmental Consulting, LLC
 8000 W 44th Ave
 Wheat Ridge CO 80033

Martin C Eckert III
 Project Number: [none]
 Project: Noble - Pluss G #25-7

Metals by EPA 6000/7000 Series Methods - Quality Control
Origins Laboratory, Inc.

Analyte	Result	Reporting Limit	Units	Spike Level	Source Result	%REC	%REC Limits	RPD	RPD Limit	Notes
---------	--------	-----------------	-------	-------------	---------------	------	-------------	-----	-----------	-------

Batch B3G1428 - EPA 3050B

Matrix Spike (B3G1428-MS1)		Source: Y307283-01			Prepared: 07/14/2023 Analyzed: 07/17/2023					
Arsenic	6.21	0.0978	mg/kg	4.89	1.10	105	75-125			
Barium	574	9.78	"	489	32.8	111	75-125			
Cadmium	5.09	0.0978	"	4.89	0.0786	102	75-125			
Copper	57.5	9.78	"	48.9	3.76	110	75-125			
Lead	14.3	9.78	"	4.89	7.49	139	75-125			QM-07
Nickel	8.32	9.78	"	4.89	2.59	117	75-125			
Selenium	5.13	0.0978	"	4.89	0.0479	104	75-125			
Silver	5.18	0.0978	"	4.89	0.00723	106	75-125			
Zinc	66.3	97.8	"	48.9	14.4	106	75-125			

Matrix Spike Dup (B3G1428-MSD1)		Source: Y307283-01			Prepared: 07/14/2023 Analyzed: 07/17/2023					
Arsenic	6.31	0.0937	mg/kg	4.69	1.10	111	75-125	1.68	20	
Barium	546	9.37	"	469	32.8	110	75-125	5.06	20	
Cadmium	4.91	0.0937	"	4.69	0.0786	103	75-125	3.54	20	
Copper	55.0	9.37	"	46.9	3.76	109	75-125	4.51	20	
Lead	12.9	9.37	"	4.69	7.49	116	75-125	10.0	20	
Nickel	8.86	9.37	"	4.69	2.59	134	75-125	6.32	20	QM-07
Selenium	4.81	0.0937	"	4.69	0.0479	102	75-125	6.52	20	
Silver	4.94	0.0937	"	4.69	0.00723	105	75-125	4.57	20	
Zinc	65.0	93.7	"	46.9	14.4	108	75-125	2.07	20	

Origins Laboratory, Inc.



The results in this report apply to the samples analyzed in accordance with the chain of custody document. This analytical report must be reproduced in its entirety.

Eagle Environmental Consulting, LLC
 8000 W 44th Ave
 Wheat Ridge CO 80033

Martin C Eckert III
 Project Number: [none]
 Project: Noble - Pluss G #25-7

Classical Chemistry Parameters - Quality Control
Origins Laboratory, Inc.

Analyte	Result	Reporting Limit	Units	Spike Level	Source Result	%REC	%REC Limits	RPD	RPD Limit	Notes
---------	--------	-----------------	-------	-------------	---------------	------	-------------	-----	-----------	-------

Batch B3G0307 - DTPA Sorbitol Preparation

Blank (B3G0307-BLK1)

Prepared: 07/03/2023 Analyzed: 07/06/2023

Boron ND 0.100 mg/L

Duplicate (B3G0307-DUP1)

Source: Y306844-01

Prepared: 07/03/2023 Analyzed: 07/06/2023

Boron 0.390 0.100 mg/L 0.452 14.8 50

Batch B3G0504 - Saturated Paste Metals

Blank (B3G0504-BLK1)

Prepared: 07/05/2023 Analyzed: 07/06/2023

SAR 0.00 SAR

Calcium PPM ND 10.0 mg/L

Magnesium PPM ND 10.0 "

Sodium PPM ND 10.0 "

Duplicate (B3G0504-DUP1)

Source: Y306881-01

Prepared: 07/05/2023 Analyzed: 07/06/2023

Calcium PPM 10.3 10.0 mg/L 11.4 11.0 50

SAR 0.00 SAR 2.96 200 200

Magnesium PPM 2.36 10.0 mg/L 2.68 12.7 50

Sodium PPM 40.4 10.0 " 42.8 5.70 50

Origins Laboratory, Inc.



The results in this report apply to the samples analyzed in accordance with the chain of custody document. This analytical report must be reproduced in its entirety.

Eagle Environmental Consulting, LLC
 8000 W 44th Ave
 Wheat Ridge CO 80033

Martin C Eckert III
 Project Number: [none]
 Project: Noble - Pluss G #25-7

Saturated Paste - Quality Control
Origins Laboratory, Inc.

Analyte	Result	Reporting Limit	Units	Spike Level	Source Result	%REC	%REC Limits	RPD	RPD Limit	Notes
Batch B3G0512 - Saturated Paste pH/EC										
Blank (B3G0512-BLK1)					Prepared: 07/05/2023 Analyzed: 07/06/2023					
Specific Conductance (EC)	ND	0.00500	mmhos/cm							
Duplicate (B3G0512-DUP1)					Source: Y306881-01 Prepared: 07/05/2023 Analyzed: 07/06/2023					
pH	8.34		pH Units		7.96			4.66	25	
Specific Conductance (EC)	0.571	0.00500	mmhos/cm		0.596			4.27	25	

Origins Laboratory, Inc.



The results in this report apply to the samples analyzed in accordance with the chain of custody document. This analytical report must be reproduced in its entirety.

Eagle Environmental Consulting, LLC
 8000 W 44th Ave
 Wheat Ridge CO 80033

Martin C Eckert III
 Project Number: [none]
 Project: Noble - Pluss G #25-7

Total Metals by 7196A - Quality Control
Waypoint Analytical, LLC.

Analyte	Result	Reporting Limit	Units	Spike Level	Source Result	%REC	%REC Limits	RPD	RPD Limit	Notes
Batch L693395 -										
DUP (L 99815-DUP)		Source: 99815			Prepared: Analyzed: 07/18/2023					
Chromium, Hexavalent	ND	0.503	mg/Kg		<0.503		-	0	20	
MS (L 99815-MS)		Source: 99815			Prepared: Analyzed: 07/18/2023					
Chromium, Hexavalent	33.2	2.54	mg/Kg	40.6	<1.24	82	75-125			
LCS (LCS)		Prepared: Analyzed: 07/18/2023								
Chromium, Hexavalent	6.91	0.5	mg/Kg	8		86	75-125			
LRB (LRB)		Prepared: Analyzed: 07/18/2023								
Chromium, Hexavalent	ND	0.5	mg/Kg				-			

Origins Laboratory, Inc.



The results in this report apply to the samples analyzed in accordance with the chain of custody document. This analytical report must be reproduced in its entirety.

Eagle Environmental Consulting, LLC
 8000 W 44th Ave
 Wheat Ridge CO 80033

Martin C Eckert III
 Project Number: [none]
 Project: Noble - Pluss G #25-7

PAH by 8270D SIM - Quality Control
Waypoint Analytical, LLC.

Analyte	Result	Reporting Limit	Units	Spike Level	Source Result	%REC	%REC Limits	RPD	RPD Limit	Notes
---------	--------	-----------------	-------	-------------	---------------	------	-------------	-----	-----------	-------

Batch L691488 - 3550B

MSD (L 96424-MSD-L691488)		Source: Y306881-05			Prepared: 07/07/2023 Analyzed: 07/10/2023					
Pyrene	0.118	0.00067	mg/Kg	0.164	<0.000643	71.9	30-130	8.1	30	
Benzo(a)pyrene	0.122	0.00067	"	0.164	<0.000468	74.3	30-130	4.1	30	
Benzo(a)anthracene	0.116	0.00067	"	0.164	<0.000493	70.7	30-130	5.3	30	
1-Methylnaphthalene	0.103	0.00201	"	0.164	<0.00109	62.8	30-130	0.9	30	
2-Methylnaphthalene	0.103	0.00201	"	0.164	<0.00194	62.8	30-130	0	30	
Acenaphthene	0.114	0.00067	"	0.164	<0.000304	69.5	30-130	1.7	30	
Benzo(k)fluoranthene	0.0755	0.00067	"	0.164	<0.000437	46	30-130	12.1	30	
Anthracene	0.119	0.00067	"	0.164	<0.000334	72.5	30-130	6	30	
Benzo(b)fluoranthene	0.0797	0.00067	"	0.164	<0.000585	48.5	30-130	16.1	30	
Chrysene	0.115	0.00067	"	0.164	<0.000624	70.1	30-130	0	30	
Dibenz(a,h)anthracene	0.132	0.00067	"	0.164	<0.000614	80.4	30-130	0.7	30	
Fluoranthene	0.119	0.00067	"	0.164	<0.000394	72.5	30-130	7.2	30	
Fluorene	0.122	0.00067	"	0.164	0.00079	73.9	30-130	2.4	30	
Indeno(1,2,3-cd)pyrene	0.101	0.00067	"	0.164	<0.000627	61.5	30-130	10.6	30	
Surrogate: 2-Fluorobiphenyl	55.6		"	0.329	166	55.6	33-115			
Surrogate: 4-Terphenyl-d14	56.5		"	0.329	179	56.5	33-122			
Surrogate: Nitrobenzene-d5	47.4		"	0.329	162	47.4	29-110			

MS (L 96424-MS-L691488)		Source: Y306881-05			Prepared: 07/07/2023 Analyzed: 07/10/2023					
Pyrene	0.128	0.00067	mg/Kg	0.164	<0.000643	78	30-130			
Indeno(1,2,3-cd)pyrene	0.0908	0.00067	"	0.164	<0.000627	55.3	30-130			
Anthracene	0.112	0.00067	"	0.164	<0.000334	68.2	30-130			
Benzo(a)anthracene	0.11	0.00067	"	0.164	<0.000493	67	30-130			
Benzo(a)pyrene	0.117	0.00067	"	0.164	<0.000468	71.3	30-130			
Benzo(b)fluoranthene	0.0678	0.00067	"	0.164	<0.000585	41.3	30-130			
Benzo(k)fluoranthene	0.0853	0.00067	"	0.164	<0.000437	52	30-130			
Chrysene	0.115	0.00067	"	0.164	<0.000624	70.1	30-130			

Origins Laboratory, Inc.



The results in this report apply to the samples analyzed in accordance with the chain of custody document. This analytical report must be reproduced in its entirety.

Eagle Environmental Consulting, LLC
 8000 W 44th Ave
 Wheat Ridge CO 80033

Martin C Eckert III
 Project Number: [none]
 Project: Noble - Pluss G #25-7

PAH by 8270D SIM - Quality Control
Waypoint Analytical, LLC.

Analyte	Result	Reporting Limit	Units	Spike Level	Source Result	%REC	%REC Limits	RPD	RPD Limit	Notes
---------	--------	-----------------	-------	-------------	---------------	------	-------------	-----	-----------	-------

Batch L691488 - 3550B

MS (L 96424-MS-L691488)		Source: Y306881-05			Prepared: 07/07/2023 Analyzed: 07/10/2023					
Dibenz(a,h)anthracene	0.131	0.00067	mg/Kg	0.164	<0.000614	79.8	30-130			
Acenaphthene	0.112	0.00067	"	0.164	<0.000304	68.2	30-130			
2-Methylnaphthalene	0.103	0.00201	"	0.164	<0.00194	62.8	30-130			
1-Methylnaphthalene	0.104	0.00201	"	0.164	<0.00109	63.4	30-130			
Fluoranthene	0.128	0.00067	"	0.164	<0.000394	78	30-130			
Fluorene	0.125	0.00067	"	0.164	0.00079	75.7	30-130			
Surrogate: Nitrobenzene-d5	47.2		"	0.328	162	47.2	29-110			
Surrogate: 4-Terphenyl-d14	62.5		"	0.328	179	62.5	33-122			
Surrogate: 2-Fluorobiphenyl	52.1		"	0.328	166	52.1	33-115			

LCS (LCS-L691488)		Prepared: 07/07/2023 Analyzed: 07/10/2023								
1-Methylnaphthalene	0.0852	0.00201	mg/Kg	0.167		51	30-130			
Fluorene	0.105	0.00067	"	0.167		62.8	30-130			
Indeno(1,2,3-cd)pyrene	0.0985	0.00067	"	0.167		58.9	30-130			
Pyrene	0.126	0.00067	"	0.167		75.4	30-130			
Dibenz(a,h)anthracene	0.138	0.00067	"	0.167		82.6	30-130			
2-Methylnaphthalene	0.0899	0.00201	"	0.167		53.8	30-130			
Benzo(k)fluoranthene	0.0829	0.00067	"	0.167		49.6	30-130			
Benzo(b)fluoranthene	0.0689	0.00067	"	0.167		41.2	30-130			
Benzo(a)pyrene	0.116	0.00067	"	0.167		69.4	30-130			
Benzo(a)anthracene	0.102	0.00067	"	0.167		61	30-130			
Anthracene	0.122	0.00067	"	0.167		73	30-130			
Acenaphthene	0.1	0.00067	"	0.167		59.8	30-130			
Fluoranthene	0.125	0.00067	"	0.167		74.8	30-130			
Chrysene	0.112	0.00067	"	0.167		67	30-130			
Surrogate: Nitrobenzene-d5	46.8		"	0.333		46.8	29-110			
Surrogate: 4-Terphenyl-d14	66.6		"	0.333		66.6	33-122			

Origins Laboratory, Inc.



The results in this report apply to the samples analyzed in accordance with the chain of custody document. This analytical report must be reproduced in its entirety.

Eagle Environmental Consulting, LLC
 8000 W 44th Ave
 Wheat Ridge CO 80033

Martin C Eckert III
 Project Number: [none]
 Project: Noble - Pluss G #25-7

PAH by 8270D SIM - Quality Control
Waypoint Analytical, LLC.

Analyte	Result	Reporting Limit	Units	Spike Level	Source Result	%REC	%REC Limits	RPD	RPD Limit	Notes
Batch L691488 - 3550B										
LCS (LCS-L691488)					Prepared: 07/07/2023 Analyzed: 07/10/2023					
Surrogate: 2-Fluorobiphenyl	46.8		mg/Kg	0.333		46.8	33-115			
LRB (LRB-L691488)					Prepared: 07/07/2023 Analyzed: 07/10/2023					
Chrysene	ND	0.00067	mg/Kg				-			
Dibenz(a,h)anthracene	ND	0.00067	"				-			
Fluoranthene	ND	0.00067	"				-			
Fluorene	ND	0.00067	"				-			
Benzo(k)fluoranthene	ND	0.00067	"				-			
Pyrene	ND	0.00067	"				-			
Indeno(1,2,3-cd)pyrene	ND	0.00067	"				-			
Benzo(b)fluoranthene	ND	0.00067	"				-			
Benzo(a)pyrene	ND	0.00067	"				-			
Benzo(a)anthracene	ND	0.00067	"				-			
Anthracene	ND	0.00067	"				-			
2-Methylnaphthalene	ND	0.00201	"				-			
1-Methylnaphthalene	ND	0.00201	"				-			
Acenaphthene	ND	0.00067	"				-			
Surrogate: Nitrobenzene-d5	46.2		"	0.333		46.2	29-110			
Surrogate: 4-Terphenyl-d14	70.8		"	0.333		70.8	33-122			
Surrogate: 2-Fluorobiphenyl	51		"	0.333		51	33-115			

Origins Laboratory, Inc.



The results in this report apply to the samples analyzed in accordance with the chain of custody document. This analytical report must be reproduced in its entirety.

Eagle Environmental Consulting, LLC
8000 W 44th Ave
Wheat Ridge CO 80033

Martin C Eckert III
Project Number: [none]
Project: Noble - Pluss G #25-7

Notes and Definitions

- U Sample is Non-Detect.
- S-GC Surrogate recovery outside of control limits. The data was accepted based on valid recovery of the remaining surrogate.
- R-05 The sample was diluted due to the presence of high levels of non-target analytes resulting in elevated reporting limits.
- QM-07 The spike recovery was outside acceptance limits for the MS and/or MSD. The batch was accepted based on acceptable LCS recovery.
- J Estimated Value. Analyte below reported quantitation limit.
- ND Analyte NOT DETECTED at or above the reporting limit
- RPD Relative Percent Difference

All soil results are reported on a wet weight basis.

Calculated results may use J-flag data (instead of reported "ND") as part of calculation to provide a more accurate result.

Origins Laboratory, Inc.



The results in this report apply to the samples analyzed in accordance with the chain of custody document. This analytical report must be reproduced in its entirety.



July 24, 2023

Eagle Environmental Consulting, LLC

Martin C Eckert III

8000 W 44th Ave

Wheat Ridge CO 80033

Project Name - Noble - Pluss G #25-7

Project Number - [none]

Attached are your analytical results for Noble - Pluss G #25-7 received by Origins Laboratory, Inc. July 14, 2023. This project is associated with Origins project number Y307322-01.

The analytical results in the following report were analyzed under the guidelines of EPA Methods. These methods are identified as follows; "SW" are defined in SW-846, "EPA" are defined in 40CFR part 136 and "SM" are defined in the most current revision of Standard Methods For the Examination of Water and Wastewater.

The analytical results apply specifically to the samples and analyses specified per the attached Chain of Custody. As such, this report shall not be reproduced except in full, without the written approval of Origin's laboratory.

Unless otherwise noted, the analytical results for all soil samples are reported on a wet weight basis. All analytical analyses were performed under NELAP guidelines unless noted by a data qualifier.

Any holding time exceedances, deviations from the method specifications or deviations from Origins Laboratory's Standard Operating Procedures are outlined in the case narrative.

Thank you for selecting Origins for your analytical needs. Please contact us with any questions concerning this report, or if we can help with anything at all.

Origins Laboratory, Inc.
303.433.1322
o-squad@oelabinc.com



1725 Elk Place, Denver, CO 80211 | Phone: 303.433.1322 | Fax: 303.265.9645

Eagle Environmental Consulting, LLC
8000 W 44th Ave
Wheat Ridge CO 80033

Martin C Eckert III
Project Number: [none]
Project: Noble - Pluss G #25-7

CROSS REFERENCE REPORT

Sample ID	Laboratory ID	Matrix	Date Sampled	Date Received
Background-01@2'	Y307322-01	Soil	June 30, 2023 13:40	07/14/2023 15:55

Origins Laboratory, Inc.



The results in this report apply to the samples analyzed in accordance with the chain of custody document. This analytical report must be reproduced in its entirety.

Eagle Environmental Consulting, LLC
 8000 W 44th Ave
 Wheat Ridge CO 80033

Martin C Eckert III
 Project Number: [none]
 Project: Noble - Pluss G #25-7

Origins Laboratory

F-012207-01-R1
 Effective Date: 01/09/12

Sample Receipt Checklist

Origins Work Order: 4307322

Client: Eagle
 Client Project ID: Pluss G #25-07

Checklist Completed by: EHS
 Date/time completed: 7/14/23

Shipped Via: HO
 (UPS, FedEx, Hand Delivered, Pick-up, etc.)
 Airbill #: N/A

Matrix(s) Received: (Check all that apply): Soil/Solid Water Other: _____

Cooler Number/Temperature: 1 / 3 °c 1 °c 1 °c (Describe) _____ °c

Thermometer ID: TO04

Requirement Description	Yes	No	N/A	Comments (if any)
If samples require cooling, was the temperature between 0°C to ≤ 6°C ⁽¹⁾ ?	<input checked="" type="checkbox"/>			
Is there ice present (document if blue ice is used)	<input checked="" type="checkbox"/>			
Are custody seals present on cooler? (if so, document in comments if they are signed and dated, broken or intact)	<input checked="" type="checkbox"/>			
Are custody seals present on each sample container? (if so, document in comments if they are signed and dated, broken or intact)	<input checked="" type="checkbox"/>			
Were all samples received intact ⁽¹⁾ ?	<input checked="" type="checkbox"/>			
Was adequate sample volume provided ⁽¹⁾ ?	<input checked="" type="checkbox"/>			
Are short holding time analytes or samples with HTs due within 48 hours present ⁽¹⁾ ?	<input checked="" type="checkbox"/>			
Is a chain-of-custody (COC) present and filled out completely ⁽¹⁾ ?	<input checked="" type="checkbox"/>			
Does the COC agree with the number and type of sample bottles received ⁽¹⁾ ?	<input checked="" type="checkbox"/>			
Do the sample IDs on the bottle labels match the COC ⁽¹⁾ ?	<input checked="" type="checkbox"/>			
Is the COC properly relinquished by the client with date and time recorded ⁽¹⁾ ?	<input checked="" type="checkbox"/>			
For volatiles in water – is there headspace (> ¼ inch bubble) present? If yes, contact client and note in narrative.	<input checked="" type="checkbox"/>			
Are samples preserved that require preservation and was it checked ⁽¹⁾ ? (note ID of confirmation instrument used in comments) / (preservation is not confirmed for subcontracted analyses in order to insure sample integrity)/(pH <2 for samples preserved with HNO3, HCL, H2SO4) / (pH >10 for samples preserved with NaAsO2+NaOH, ZnAc+NaOH)	<input checked="" type="checkbox"/>			
Additional Comments (if any):				

⁽¹⁾ If NO, then contact the client before proceeding with analysis and note date/time and person contacted as well as the corrective action to in the additional comments (above) and the case narrative.

Reviewed by (Project Manager) [Signature] Date/Time Reviewed 7/16/23

Origins Laboratory, Inc.
[Signature]

The results in this report apply to the samples analyzed in accordance with the chain of custody document. This analytical report must be reproduced in its entirety.

Eagle Environmental Consulting, LLC
 8000 W 44th Ave
 Wheat Ridge CO 80033

Martin C Eckert III
 Project Number: [none]
 Project: Noble - Pluss G #25-7

Background-01@2'
6/30/2023 1:40:00PM

Analyte	Result	Reporting Limit	Units	Dilution	Batch	Analyst	Prepared	Analyzed	Notes
---------	--------	-----------------	-------	----------	-------	---------	----------	----------	-------

Origins Laboratory, Inc.
Y307322-01 (Soil)

pH in Soil by 9045D

pH	6.93		pH Units	1	B3G1719	HJD	07/17/2023	07/18/2023	
----	------	--	----------	---	---------	-----	------------	------------	--

Table 915 metals by EPA 6020B

Arsenic	1.61	0.0986	mg/kg	10	B3G1716	EDM	07/17/2023	07/18/2023	
Barium	38.7	9.86	"	"	"	EDM	"	"	
Cadmium	0.107	0.0986	"	"	"	EDM	"	"	
Copper	ND	9.86	"	"	"	EDM	"	"	
Lead	ND	9.86	"	"	"	EDM	"	"	
Nickel	ND	9.86	"	"	"	EDM	"	"	
Selenium	ND	0.0986	"	"	"	EDM	"	"	
Silver	ND	0.0986	"	"	"	EDM	"	"	
Zinc	ND	98.6	"	"	"	EDM	"	"	

Origins Laboratory, Inc.



The results in this report apply to the samples analyzed in accordance with the chain of custody document. This analytical report must be reproduced in its entirety.

Eagle Environmental Consulting, LLC
 8000 W 44th Ave
 Wheat Ridge CO 80033

Martin C Eckert III
 Project Number: [none]
 Project: Noble - Pluss G #25-7

Metals by EPA 6000/7000 Series Methods - Quality Control
Origins Laboratory, Inc.

Analyte	Result	Reporting Limit	Units	Spike Level	Source Result	%REC	%REC Limits	RPD	RPD Limit	Notes
---------	--------	-----------------	-------	-------------	---------------	------	-------------	-----	-----------	-------

Batch B3G1716 - EPA 3050B

Blank (B3G1716-BLK1)

Prepared: 07/17/2023 Analyzed: 07/18/2023

Arsenic	ND	0.000100	mg/kg							
Barium	ND	0.0100	"							
Cadmium	ND	0.000100	"							
Copper	ND	0.0100	"							
Lead	ND	0.0100	"							
Nickel	ND	0.0100	"							
Selenium	ND	0.000100	"							
Silver	ND	0.000100	"							
Zinc	ND	0.100	"							

LCS (B3G1716-BS1)

Prepared: 07/17/2023 Analyzed: 07/18/2023

Arsenic	0.0514	0.000100	mg/kg	0.0500		103	80-120			
Barium	5.27	0.0100	"	5.00		105	80-120			
Cadmium	0.0528	0.000100	"	0.0500		106	80-120			
Copper	0.522	0.0100	"	0.500		104	80-120			
Lead	0.0527	0.0100	"	0.0500		105	80-120			
Nickel	0.0519	0.0100	"	0.0500		104	80-120			
Selenium	0.0509	0.000100	"	0.0500		102	80-120			
Silver	0.0502	0.000100	"	0.0500		100	80-120			
Zinc	0.505	0.100	"	0.500		101	80-120			

Matrix Spike (B3G1716-MS1)

Source: Y307313-01

Prepared: 07/17/2023 Analyzed: 07/18/2023

Arsenic	7.57	0.0935	mg/kg	4.68	3.18	93.9	75-125			
Barium	576	9.35	"	468	84.8	105	75-125			
Cadmium	5.22	0.0935	"	4.68	0.333	104	75-125			
Copper	63.2	9.35	"	46.8	17.2	98.2	75-125			
Lead	23.5	9.35	"	4.68	17.5	129	75-125			QM-07

Origins Laboratory, Inc.



The results in this report apply to the samples analyzed in accordance with the chain of custody document. This analytical report must be reproduced in its entirety.

Eagle Environmental Consulting, LLC
 8000 W 44th Ave
 Wheat Ridge CO 80033

Martin C Eckert III
 Project Number: [none]
 Project: Noble - Pluss G #25-7

Metals by EPA 6000/7000 Series Methods - Quality Control
Origins Laboratory, Inc.

Analyte	Result	Reporting Limit	Units	Spike Level	Source Result	%REC	%REC Limits	RPD	RPD Limit	Notes
Batch B3G1716 - EPA 3050B										
Matrix Spike (B3G1716-MS1)			Source: Y307313-01			Prepared: 07/17/2023 Analyzed: 07/18/2023				
Nickel	23.6	9.35	mg/kg	4.68	16.9	143	75-125			QM-07
Selenium	4.66	0.0935	"	4.68	0.453	89.9	75-125			
Silver	4.63	0.0935	"	4.68	0.0414	98.1	75-125			
Zinc	124	93.5	"	46.8	67.4	120	75-125			
Matrix Spike Dup (B3G1716-MSD1)			Source: Y307313-01			Prepared: 07/17/2023 Analyzed: 07/18/2023				
Arsenic	7.40	0.0969	mg/kg	4.84	3.18	87.1	75-125	2.33	20	
Barium	599	9.69	"	484	84.8	106	75-125	3.83	20	
Cadmium	5.30	0.0969	"	4.84	0.333	103	75-125	1.60	20	
Copper	64.2	9.69	"	48.4	17.2	96.8	75-125	1.57	20	
Lead	22.3	9.69	"	4.84	17.5	99.3	75-125	5.33	20	
Nickel	21.5	9.69	"	4.84	16.9	94.6	75-125	9.40	20	
Selenium	4.72	0.0969	"	4.84	0.453	88.0	75-125	1.19	20	
Silver	4.78	0.0969	"	4.84	0.0414	97.8	75-125	3.18	20	
Zinc	114	96.9	"	48.4	67.4	96.6	75-125	8.02	20	

Origins Laboratory, Inc.



The results in this report apply to the samples analyzed in accordance with the chain of custody document. This analytical report must be reproduced in its entirety.

Eagle Environmental Consulting, LLC
 8000 W 44th Ave
 Wheat Ridge CO 80033

Martin C Eckert III
 Project Number: [none]
 Project: Noble - Pluss G #25-7

Saturated Paste - Quality Control
Origins Laboratory, Inc.

Analyte	Result	Reporting Limit	Units	Spike Level	Source Result	%REC	%REC Limits	RPD	RPD Limit	Notes
---------	--------	-----------------	-------	-------------	---------------	------	-------------	-----	-----------	-------

Batch B3G1719 - Saturated Paste pH/EC

Duplicate (B3G1719-DUP1)		Source: Y307317-01			Prepared: 07/17/2023 Analyzed: 07/18/2023	
pH	7.10		pH Units	7.02		1.13 25

Origins Laboratory, Inc.



The results in this report apply to the samples analyzed in accordance with the chain of custody document. This analytical report must be reproduced in its entirety.

Eagle Environmental Consulting, LLC
8000 W 44th Ave
Wheat Ridge CO 80033

Martin C Eckert III
Project Number: [none]
Project: Noble - Pluss G #25-7

Notes and Definitions

QM-07 The spike recovery was outside acceptance limits for the MS and/or MSD. The batch was accepted based on acceptable LCS recovery.

ND Analyte NOT DETECTED at or above the reporting limit

RPD Relative Percent Difference

All soil results are reported at a wet weight basis.

Origins Laboratory, Inc.



The results in this report apply to the samples analyzed in accordance with the chain of custody document. This analytical report must be reproduced in its entirety.