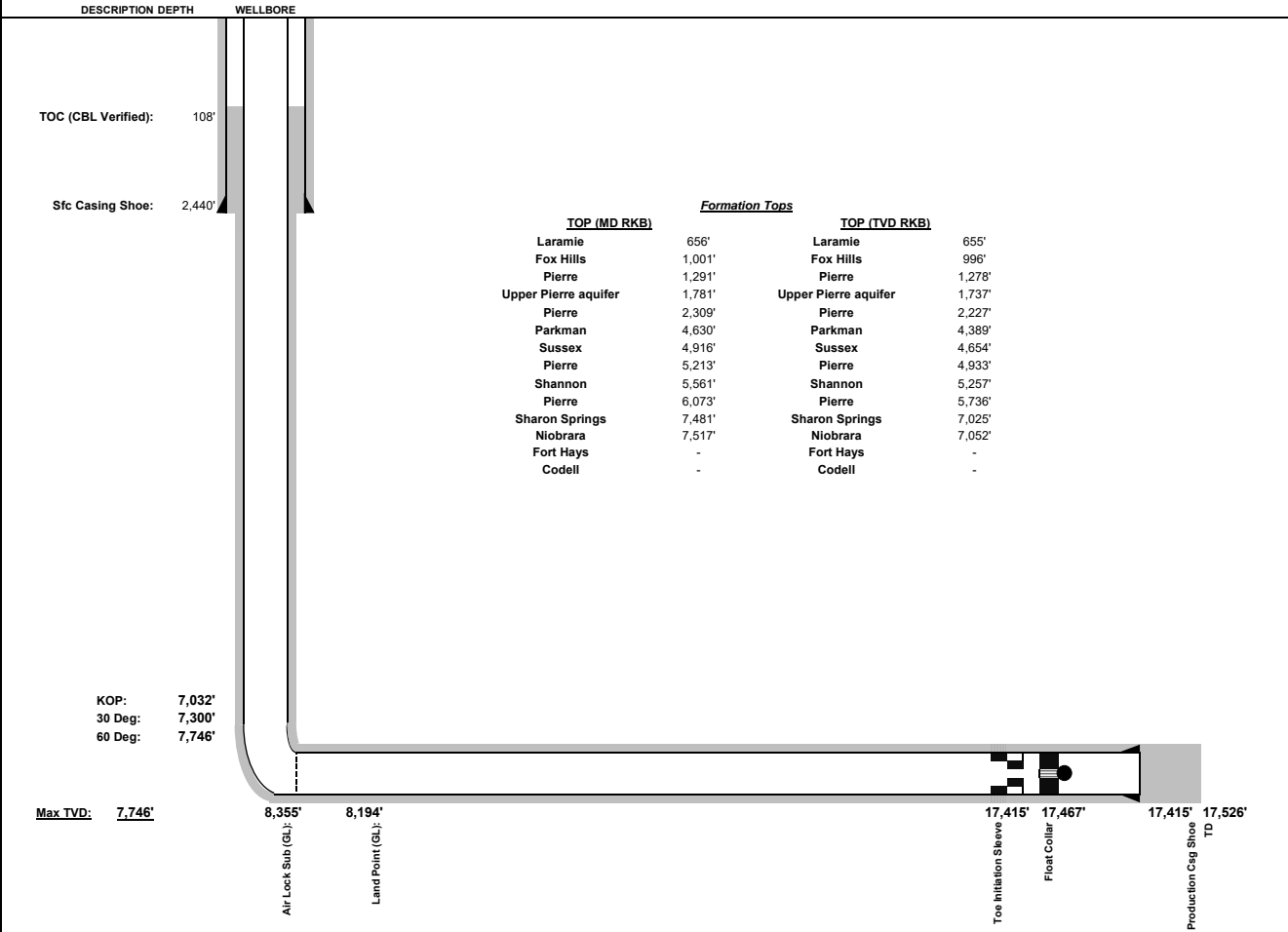


County Line 0508-13H



			Date		5/23/2024	
WELL:	County Line 0508-13H		Pre-Frac WBD			
LOCATION:	SWSE Sec 31 01N635W					
	1913' FEL; 339' FSL					
FORMATION:	C Chalk					
API #:	05-123-51638					
Field:	DJ Horizontal Niobrara					
Spud:	03/19/24					
Current Status:	Awaiting Completions					
Well Type	Horizontal					
Well Length	XRL					
Casing and Tubular Data						
Type	Size	Weight	Top	Bottom	Hole Size	Cement Type
Surface	9 5/8	36.0 ppf	0'	2,440'	13.5"	15.8ppg Class G Neat
Production	5 1/2	20.0 ppf	0'	17,511'	8.5"	
Tubing	2 3/8	4.6 ppf	0'	n/a	n/a	13.2 Lead, 13.2 Tail
Elevation Data						
GL	5037	feet				
KB	5056	feet				
Difference	19	feet				
*All depths from GL unless otherwise noted						
TPZ/ Heal Setback Depth (MD GL):	8,138'					
BPZ/ Toe Setback Depth (MD GL):	17,432'					
Production Casing Info:	5.5" 20# US Steel P110HP Freedom HTQ					
Cement to Surface during 5.5" Job:	40		bbls			