



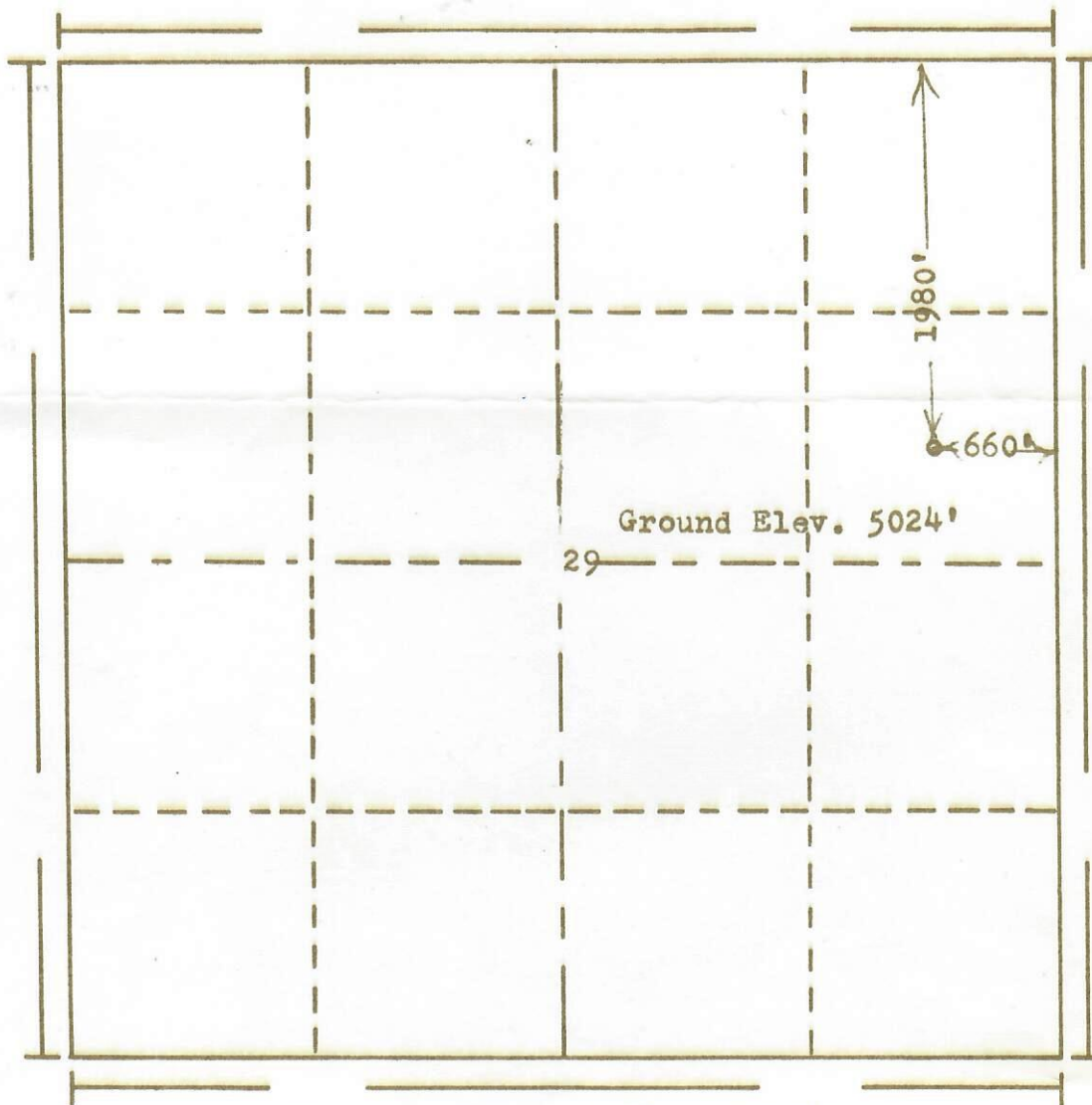
FORM F-106

RECEIVED

JAN 4 1974

COLO. OIL & GAS CONS. COMM.

R. 67W



Scale... 1" = 1000'

Powers Elevation Company, Inc. of Denver, Colorado
has in accordance with a request from Mr. Scott
for Champlin Petroleum Co.

determined the location of No. 1 Zarlengo
to be CS&NE Section 29 Township 1N
Range 67W of the 6th Principal Meridian
Weld County, Colorado



50000118

I hereby certify that this plat is an
accurate representation of a correct
survey showing the location of

Date: 12-20-73

Eric H. Haller
Licensed Land Surveyor No. 2853
State of Colorado

73-1046

1