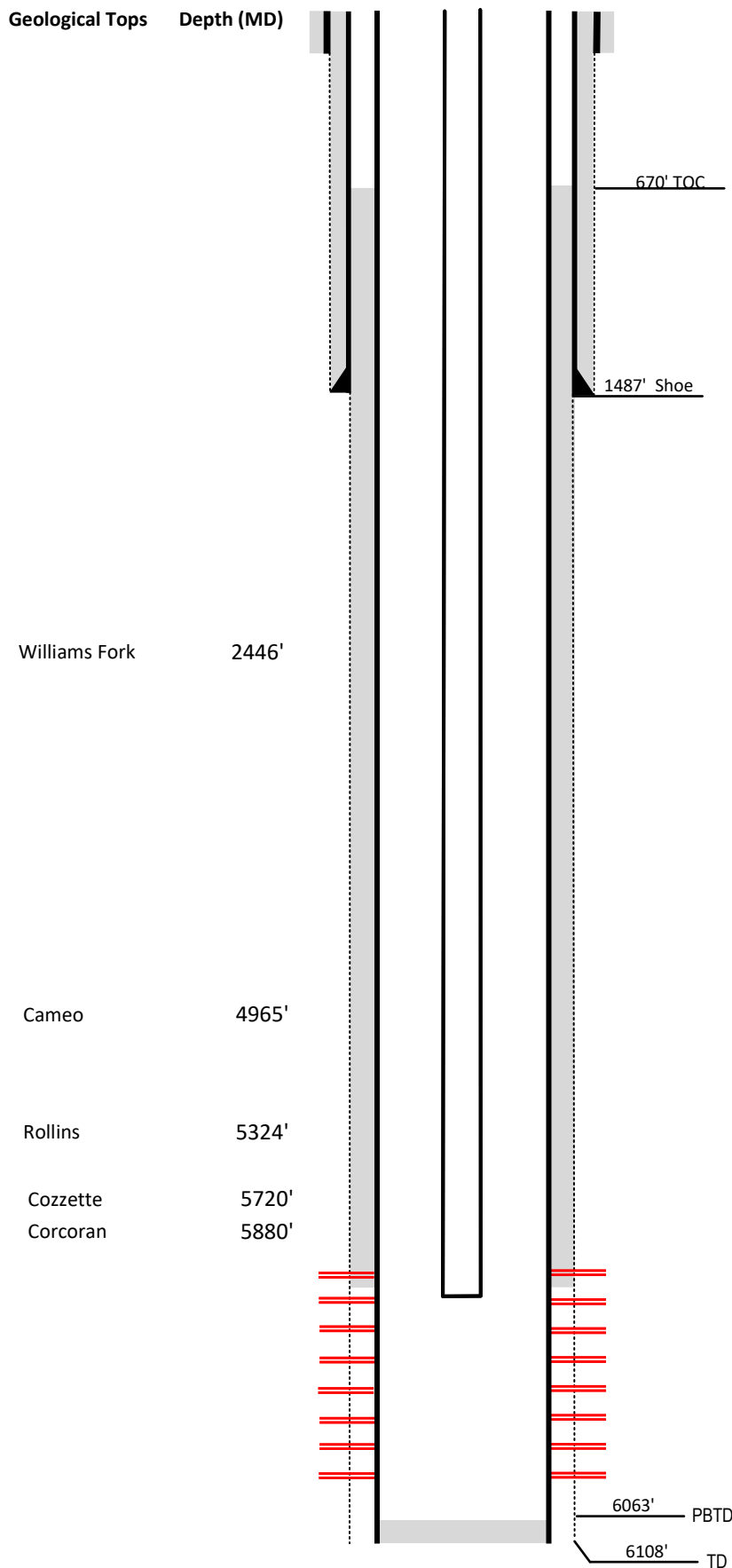


Laramie Energy

Current Wellbore Diagram

Not to scale

FEDERAL WELL: YES NO



Well Name	LL & CC # 36-15
API	05-077-09208-00
Surface Location	NWSE Sec 36 T9S R95W
GPS Coordinates	39.232850, -107.939410
County, State	Mesa County, Co
Diagram Date	2/22/2024

Hole	24" @ 40'
Conductor	16" @ 40'
Cement	Surface

Surface Hole	12.25" @ 1545'
Casing	8 5/8" 32# J-55 @ 1545'
Cement	340 sks
TOC	Surface

Production Hole	7.785" @ 6108'
Casing	4 1/2" 11.6# I-80 @ 6108'
Cement	945 sks
TOC	670'

Tubing	2 3/8" J-55 EUE @ 6043'
---------------	-------------------------

Perforations	Top	Bottom
	4488'	5978'