

Project: Rio Blanco County, CO  
Site: ELU O13 496 Pad  
Well: ELU O13 FED 24C-13 496  
Wellbore: Wellbore #1  
Design: Design #5  
Latitude: 39.698701  
Longitude: -108.114953  
Ground Level: 8118.0  
RKB=26° @ 8144.0usft (Nabors B4)

PROJECT DETAILS: Rio Blanco County, CO  
Geodetic System: Universal Transverse Mercator (US Survey Feet)  
Datum: NAD 1927 - Western US  
Ellipsoid: Clarke 1866  
Zone: Zone 12N (114 W to 108 W)  
System Datum: Mean Sea Level

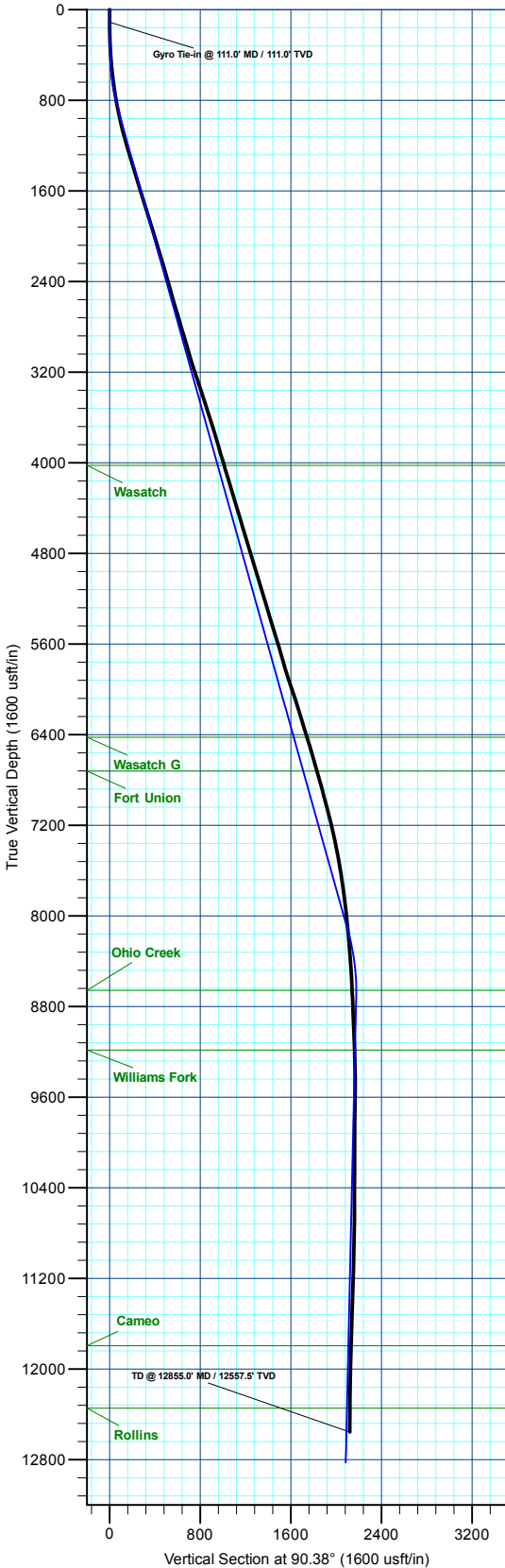
REFERENCE INFORMATION  
Vertical (TVD) Reference: RKB=26° @ 8144.0usft (Nabors B4)  
Section (VS) Reference: Slot - (0.0N, 0.0E)  
Measured Depth Reference: RKB=26° @ 8144.0usft (Nabors B4)  
Calculation Method: Minimum Curvature

FORMATION TOP DETAILS		
TVDPath	MDPath	Formation
4023.0	4150.2	Wasatch
6423.0	6642.4	Wasatch G
6723.0	6953.9	Fort Union
8658.0	8950.0	Ohio Creek
9185.0	9477.1	Williams Fork
11796.0	12088.8	Cameo
12346.0	12639.0	Rollins

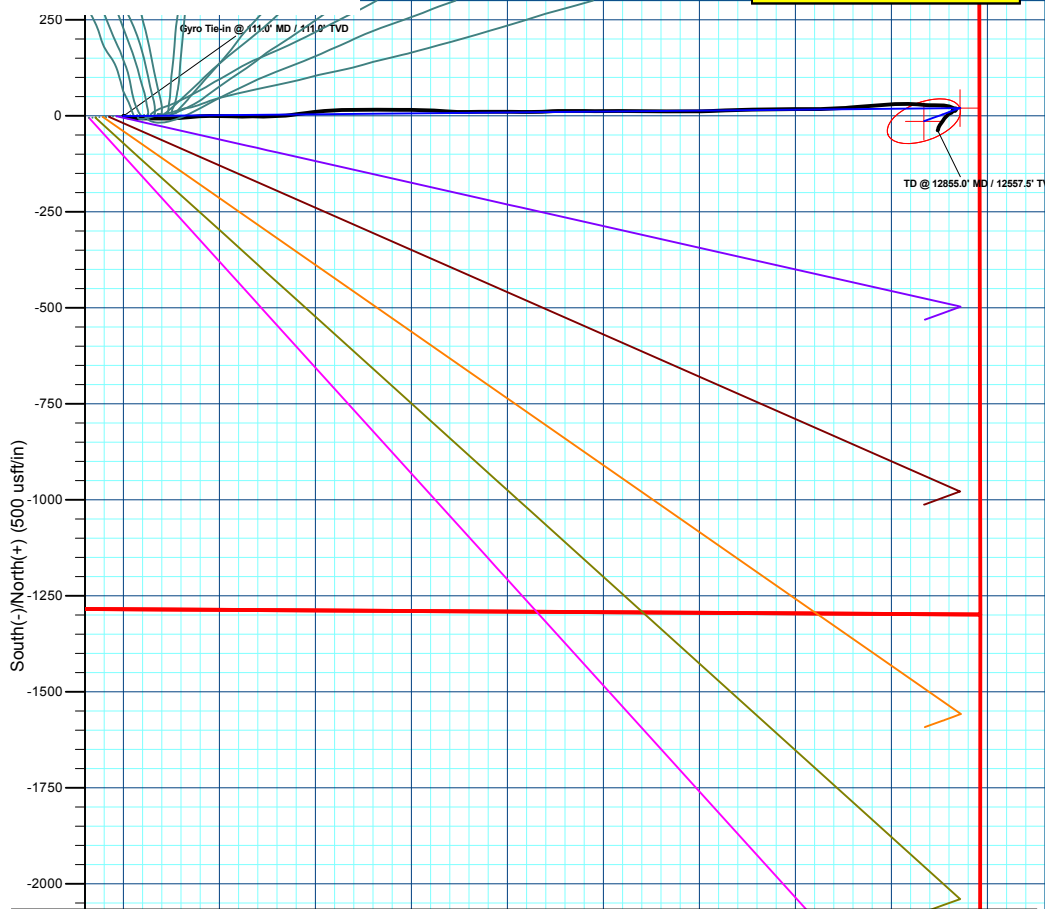
SECTION DETAILS										
MD	Inc	Azi	TVD	+N/-S	+E/-W	Dleg	TFace	VSect	Annotation	
111.0	1.13	138.49	111.0	-0.6	0.5	0.00	0.00	0.5	Conductor Tie in	
140.7	1.00	89.45	140.7	-0.8	0.9	3.00	-122.14	0.9	EOB @ 1.00° Inc. / 89.49° Azm	
400.0	1.00	89.45	400.0	-0.8	5.4	0.00	0.00	5.5	Build 3° / 100'	
887.8	15.63	89.45	881.3	-0.1	75.8	3.00	0.00	75.8	EOB @ 15.63° Inc.	
8428.8	15.63	89.45	8143.3	19.5	2108.0	0.00	0.00	2107.9	Drop 3° / 100'	
8950.0	0.00	0.00	8658.0	20.2	2178.7	3.00	180.00	2178.5	EOD @ Vertical / Build 1.5° / 100'	
9042.0	1.38	250.00	8750.0	19.8	2177.7	1.50	250.00	2177.5	EOB @ 1.38° Inc. / 250.00° Azm	
13119.5	1.38	250.00	12826.4	-13.8	2085.4	0.00	0.00	2085.4	TD @ 13119.5' MD / 12826.4' TVD	

DESIGN TARGET DETAILS						
Name	TVD	+N/-S	+E/-W	Northing	Easting	Latitude
24C-13 v2 - OHCR	8658.0	20.2	2178.7	14429482.17	2454178.52	39.698756
24C-13 v2 - PBHL	12846.0	-14.0	2084.8	14429444.99	2454085.77	39.698663

WELL DETAILS: ELU O13 FED 24C-13 496						
Ground Level : 8118.0						
+N/-S	+E/-W	Northing	Easting	Latitude	Longitude	
0.0	0.0	14429391.90	2452001.60	39.698701	-108.114953	



**TM**  
Azimuths to True North  
Magnetic North: 9.08°  
Magnetic Field  
Strength: 50848.8nT  
Dip Angle: 65.57°  
Date: 3/11/2024  
Model: HDGM2024



ANNOTATIONS									
MD	Inc	Azi	TVD	+N/-S	+E/-W	VSect	Departure	Annotation	
111.0	1.13	138.49	111.0	-0.6	0.5	0.5	0.8	Gyro Tie-in @ 111.0' MD / 111.0' TVD	
12855.0	1.30	206.30	12557.5	-37.8	2120.8	2121.0	2261.4	TD @ 12855.0' MD / 12557.5' TVD	



## **Caerus Oil & Gas**

**Rio Blanco County, CO**

**ELU O13 496 Pad**

**ELU O13 FED 24C-13 496**

**Wellbore #1**

**Design: Wellbore #1**

## **KLX Survey Report**

**19 March, 2024**



<b>Company:</b>	Caerus Oil & Gas	<b>Local Co-ordinate Reference:</b>	Well ELU O13 FED 24C-13 496
<b>Project:</b>	Rio Blanco County, CO	<b>TVD Reference:</b>	RKB=26' @ 8144.0usft (Nabors B4)
<b>Site:</b>	ELU O13 496 Pad	<b>MD Reference:</b>	RKB=26' @ 8144.0usft (Nabors B4)
<b>Well:</b>	ELU O13 FED 24C-13 496	<b>North Reference:</b>	True
<b>Wellbore:</b>	Wellbore #1	<b>Survey Calculation Method:</b>	Minimum Curvature
<b>Design:</b>	Wellbore #1	<b>Database:</b>	EDM 5000.1 Single User Db

<b>Project</b>	Rio Blanco County, CO		
<b>Map System:</b>	Universal Transverse Mercator (US Survey Feet)	<b>System Datum:</b>	Mean Sea Level
<b>Geo Datum:</b>	NAD 1927 - Western US		
<b>Map Zone:</b>	Zone 12N (114 W to 108 W)		

Site		ELU O13 496 Pad							
Site Position:		Northing:	14,429,398.00	usft	Latitude:	39.698712			
From:	Map	Easting:	2,452,071.40	usft	Longitude:	-108.114705			
Position Uncertainty:		0.0	usft	Slot Radius:	13-3/16	"	Grid Convergence:	1.84	°

Well	ELU O13 FED 24C-13 496					
Well Position	+N/-S	0.0 usft	Northing:	14,429,391.90 usft	Latitude:	39.698701
	+E/-W	0.0 usft	Easting:	2,452,001.60 usft	Longitude:	-108.114953
Position Uncertainty		0.0 usft	Wellhead Elevation:	usft	Ground Level:	8,118.0 usft

<b>Wellbore</b>	Wellbore #1				
<b>Magnetics</b>	<b>Model Name</b>	<b>Sample Date</b>	<b>Declination (°)</b>	<b>Dip Angle (°)</b>	<b>Field Strength (nT)</b>
	HDGM2024	3/11/2024	9.08	65.67	50,848.80000000

<b>Design</b>	Wellbore #1				
<b>Audit Notes:</b>					
<b>Version:</b>	1.0	<b>Phase:</b>	ACTUAL	<b>Tie On Depth:</b>	0.0
<b>Vertical Section:</b>	<b>Depth From (TVD) (usft)</b>	<b>+N/-S (usft)</b>	<b>+E/-W (usft)</b>	<b>Direction (°)</b>	
	0.0	0.0	0.0	90.38	

<b>Survey Program</b>	<b>Date</b>	3/19/2024			
<b>From (usft)</b>	<b>To (usft)</b>	<b>Survey (Wellbore)</b>	<b>Tool Name</b>	<b>Description</b>	
26.0	111.0	Sfc Gyro (Wellbore #1)	GYRO-NS	OWSG Gyrocompass Gyro	
151.0	12,855.0	KLX MWD (Wellbore #1)	MWD	OWSG MWD - Standard	

<b>Survey</b>										
<b>Measured Depth (usft)</b>	<b>Inclination (°)</b>	<b>Azimuth (°)</b>	<b>Vertical Depth (usft)</b>	<b>+N/-S (usft)</b>	<b>+E/-W (usft)</b>	<b>Vertical Section (usft)</b>	<b>Dogleg Rate (°/100usft)</b>	<b>Build Rate (°/100usft)</b>	<b>Turn Rate (°/100usft)</b>	
0.0	0.00	0.00	0.0	0.0	0.0	0.0	0.00	0.00	0.00	
26.0	0.00	0.00	26.0	0.0	0.0	0.0	0.00	0.00	0.00	
56.0	0.42	174.81	56.0	-0.1	0.0	0.0	1.40	1.40	0.00	
86.0	0.70	121.08	86.0	-0.3	0.2	0.2	1.88	0.93	-179.10	
<b>Gyro Tie-in @ 111.0' MD / 111.0' TVD</b>										
111.0	1.13	138.49	111.0	-0.6	0.5	0.5	2.03	1.72	69.64	
151.0	1.20	118.80	151.0	-1.1	1.1	1.1	1.01	0.18	-49.23	
242.0	1.80	112.50	242.0	-2.1	3.3	3.3	0.68	0.66	-6.92	
331.0	2.30	104.90	330.9	-3.1	6.3	6.3	0.64	0.56	-8.54	
420.0	4.10	90.50	419.8	-3.6	11.2	11.2	2.20	2.02	-16.18	

<b>Company:</b>	Caerus Oil & Gas	<b>Local Co-ordinate Reference:</b>	Well ELU O13 FED 24C-13 496
<b>Project:</b>	Rio Blanco County, CO	<b>TVD Reference:</b>	RKB=26' @ 8144.0usft (Nabors B4)
<b>Site:</b>	ELU O13 496 Pad	<b>MD Reference:</b>	RKB=26' @ 8144.0usft (Nabors B4)
<b>Well:</b>	ELU O13 FED 24C-13 496	<b>North Reference:</b>	True
<b>Wellbore:</b>	Wellbore #1	<b>Survey Calculation Method:</b>	Minimum Curvature
<b>Design:</b>	Wellbore #1	<b>Database:</b>	EDM 5000.1 Single User Db

Survey										
Measured Depth (usft)	Inclination (°)	Azimuth (°)	Vertical Depth (usft)	+N/-S (usft)	+E/-W (usft)	Vertical Section (usft)	Dogleg Rate (°/100usft)	Build Rate (°/100usft)	Turn Rate (°/100usft)	
510.0	5.70	96.70	509.4	-4.1	18.8	18.9	1.87	1.78	6.89	
606.0	7.40	99.90	604.8	-5.7	29.7	29.7	1.81	1.77	3.33	
702.0	8.10	91.50	699.9	-7.0	42.5	42.6	1.39	0.73	-8.75	
798.0	9.80	87.40	794.8	-6.8	57.4	57.5	1.89	1.77	-4.27	
894.0	12.00	89.90	889.0	-6.4	75.6	75.6	2.34	2.29	2.60	
989.0	12.30	90.80	981.9	-6.5	95.6	95.6	0.37	0.32	0.95	
1,085.0	15.00	89.70	1,075.2	-6.6	118.2	118.3	2.83	2.81	-1.15	
1,181.0	15.90	86.50	1,167.7	-5.7	143.8	143.8	1.29	0.94	-3.33	
1,276.0	16.80	85.40	1,258.9	-3.8	170.5	170.5	1.00	0.95	-1.16	
1,372.0	16.50	84.60	1,350.8	-1.4	197.9	197.9	0.39	-0.31	-0.83	
1,468.0	16.90	91.10	1,442.8	-0.4	225.4	225.4	1.99	0.42	6.77	
1,564.0	17.60	91.20	1,534.5	-1.0	253.8	253.8	0.73	0.73	0.10	
1,659.0	17.30	90.80	1,625.1	-1.5	282.3	282.3	0.34	-0.32	-0.42	
1,755.0	16.10	89.30	1,717.0	-1.5	309.9	309.9	1.33	-1.25	-1.56	
1,851.0	16.30	90.40	1,809.2	-1.5	336.7	336.7	0.38	0.21	1.15	
1,947.0	17.80	90.20	1,901.0	-1.6	364.8	364.8	1.56	1.56	-0.21	
2,042.0	17.50	87.20	1,991.5	-1.0	393.6	393.6	1.01	-0.32	-3.16	
2,138.0	17.80	85.30	2,083.0	1.0	422.7	422.6	0.68	0.31	-1.98	
2,234.0	16.90	81.80	2,174.7	4.1	451.1	451.1	1.44	-0.94	-3.65	
2,330.0	16.60	82.40	2,266.6	8.0	478.5	478.4	0.36	-0.31	0.63	
2,425.0	16.00	84.00	2,357.8	11.1	505.0	504.9	0.79	-0.63	1.68	
2,521.0	15.40	87.30	2,450.2	13.1	530.9	530.8	1.12	-0.63	3.44	
2,617.0	15.50	87.60	2,542.7	14.2	556.4	556.3	0.13	0.10	0.31	
2,713.0	16.70	87.20	2,635.0	15.4	583.0	582.9	1.26	1.25	-0.42	
2,808.0	16.30	90.00	2,726.0	16.1	610.0	609.9	0.94	-0.42	2.95	
2,904.0	16.90	90.30	2,818.0	16.0	637.4	637.3	0.63	0.63	0.31	
3,000.0	16.70	90.20	2,909.9	15.9	665.1	665.0	0.21	-0.21	-0.10	
3,095.0	16.00	90.80	3,001.1	15.7	691.9	691.8	0.76	-0.74	0.63	
3,191.0	17.20	89.70	3,093.1	15.6	719.3	719.2	1.29	1.25	-1.15	
3,287.0	18.30	90.30	3,184.5	15.6	748.6	748.5	1.16	1.15	0.63	
3,383.0	18.20	92.10	3,275.7	14.9	778.6	778.5	0.60	-0.10	1.88	
3,479.0	18.10	92.90	3,366.9	13.6	808.5	808.4	0.28	-0.10	0.83	
3,578.0	18.10	94.40	3,461.0	11.7	839.2	839.1	0.47	0.00	1.52	
3,674.0	18.30	90.70	3,552.2	10.4	869.1	869.1	1.22	0.21	-3.85	
3,770.0	17.80	89.40	3,643.5	10.3	898.9	898.8	0.67	-0.52	-1.35	
3,866.0	16.00	89.90	3,735.3	10.5	926.8	926.7	1.88	-1.88	0.52	
3,961.0	16.40	89.70	3,826.6	10.6	953.3	953.2	0.43	0.42	-0.21	
4,057.0	16.50	89.60	3,918.6	10.8	980.5	980.4	0.11	0.10	-0.10	
4,153.0	17.20	90.80	4,010.5	10.7	1,008.3	1,008.2	0.81	0.73	1.25	
4,249.0	16.10	91.50	4,102.5	10.1	1,035.8	1,035.7	1.16	-1.15	0.73	
4,345.0	17.00	88.60	4,194.5	10.1	1,063.1	1,063.1	1.27	0.94	-3.02	
4,440.0	17.00	87.90	4,285.4	11.0	1,090.9	1,090.8	0.22	0.00	-0.74	
4,536.0	15.80	87.20	4,377.5	12.1	1,118.0	1,117.9	1.27	-1.25	-0.73	

<b>Company:</b>	Caerus Oil & Gas	<b>Local Co-ordinate Reference:</b>	Well ELU O13 FED 24C-13 496
<b>Project:</b>	Rio Blanco County, CO	<b>TVD Reference:</b>	RKB=26' @ 8144.0usft (Nabors B4)
<b>Site:</b>	ELU O13 496 Pad	<b>MD Reference:</b>	RKB=26' @ 8144.0usft (Nabors B4)
<b>Well:</b>	ELU O13 FED 24C-13 496	<b>North Reference:</b>	True
<b>Wellbore:</b>	Wellbore #1	<b>Survey Calculation Method:</b>	Minimum Curvature
<b>Design:</b>	Wellbore #1	<b>Database:</b>	EDM 5000.1 Single User Db

Survey										
Measured Depth (usft)	Inclination (°)	Azimuth (°)	Vertical Depth (usft)	+N/-S (usft)	+E/-W (usft)	Vertical Section (usft)	Dogleg Rate (°/100usft)	Build Rate (°/100usft)	Turn Rate (°/100usft)	
4,631.0	17.00	90.20	4,468.6	12.7	1,144.8	1,144.7	1.55	1.26	3.16	
4,727.0	17.10	90.30	4,560.4	12.6	1,172.9	1,172.8	0.11	0.10	0.10	
4,823.0	16.30	89.90	4,652.3	12.5	1,200.5	1,200.4	0.84	-0.83	-0.42	
4,919.0	17.50	90.50	4,744.2	12.4	1,228.4	1,228.3	1.26	1.25	0.63	
5,014.0	17.40	89.90	4,834.8	12.3	1,256.9	1,256.8	0.22	-0.11	-0.63	
5,110.0	16.20	88.70	4,926.7	12.6	1,284.7	1,284.5	1.30	-1.25	-1.25	
5,206.0	16.90	90.80	5,018.7	12.8	1,312.0	1,311.9	0.96	0.73	2.19	
5,301.0	16.50	90.50	5,109.7	12.4	1,339.3	1,339.2	0.43	-0.42	-0.32	
5,397.0	17.10	90.80	5,201.6	12.1	1,367.0	1,366.9	0.63	0.63	0.31	
5,493.0	16.70	90.50	5,293.5	11.8	1,394.9	1,394.8	0.43	-0.42	-0.31	
5,589.0	16.10	90.20	5,385.6	11.6	1,422.1	1,421.9	0.63	-0.63	-0.31	
5,684.0	17.30	90.50	5,476.6	11.5	1,449.4	1,449.2	1.27	1.26	0.32	
5,780.0	17.10	89.20	5,568.3	11.5	1,477.7	1,477.6	0.45	-0.21	-1.35	
5,876.0	16.00	89.10	5,660.3	12.0	1,505.1	1,505.0	1.15	-1.15	-0.10	
5,971.0	16.90	88.10	5,751.4	12.6	1,532.0	1,531.9	0.99	0.95	-1.05	
6,067.0	16.70	86.90	5,843.3	13.8	1,559.7	1,559.6	0.42	-0.21	-1.25	
6,163.0	18.40	88.30	5,934.8	15.0	1,588.6	1,588.5	1.82	1.77	1.46	
6,259.0	18.70	88.80	6,025.9	15.8	1,619.1	1,619.0	0.35	0.31	0.52	
6,354.0	17.90	88.70	6,116.0	16.4	1,649.0	1,648.8	0.84	-0.84	-0.11	
6,450.0	17.10	89.30	6,207.6	16.9	1,677.8	1,677.7	0.85	-0.83	0.63	
6,546.0	16.60	89.30	6,299.5	17.3	1,705.7	1,705.5	0.52	-0.52	0.00	
6,642.0	17.50	89.50	6,391.3	17.6	1,733.8	1,733.6	0.94	0.94	0.21	
6,737.0	17.00	90.10	6,482.0	17.7	1,762.0	1,761.8	0.56	-0.53	0.63	
6,833.0	15.90	90.90	6,574.1	17.4	1,789.2	1,789.0	1.17	-1.15	0.83	
6,929.0	16.40	88.30	6,666.3	17.6	1,815.8	1,815.7	0.92	0.52	-2.71	
7,025.0	15.80	86.40	6,758.5	18.9	1,842.4	1,842.3	0.83	-0.63	-1.98	
7,120.0	15.60	87.20	6,850.0	20.3	1,868.1	1,867.9	0.31	-0.21	0.84	
7,216.0	14.50	85.80	6,942.7	21.8	1,893.0	1,892.8	1.21	-1.15	-1.46	
7,312.0	14.90	86.00	7,035.5	23.6	1,917.3	1,917.1	0.42	0.42	0.21	
7,408.0	13.80	85.20	7,128.5	25.4	1,941.0	1,940.8	1.16	-1.15	-0.83	
7,504.0	13.30	84.50	7,221.9	27.4	1,963.4	1,963.2	0.55	-0.52	-0.73	
7,599.0	12.50	85.10	7,314.5	29.3	1,984.5	1,984.3	0.85	-0.84	0.63	
7,695.0	11.80	86.70	7,408.3	30.8	2,004.7	2,004.4	0.81	-0.73	1.67	
7,791.0	10.20	91.50	7,502.5	31.1	2,023.0	2,022.7	1.92	-1.67	5.00	
7,887.0	9.60	90.10	7,597.1	30.9	2,039.5	2,039.2	0.67	-0.63	-1.46	
7,982.0	7.90	93.10	7,691.0	30.5	2,053.9	2,053.7	1.85	-1.79	3.16	
8,078.0	7.70	94.20	7,786.1	29.7	2,066.9	2,066.7	0.26	-0.21	1.15	
8,173.0	7.10	94.80	7,880.3	28.7	2,079.1	2,078.9	0.64	-0.63	0.63	
8,269.0	5.80	92.00	7,975.7	28.1	2,089.9	2,089.6	1.39	-1.35	-2.92	
8,365.0	5.30	90.50	8,071.3	27.8	2,099.2	2,098.9	0.54	-0.52	-1.56	
8,461.0	5.10	91.80	8,166.9	27.7	2,107.9	2,107.6	0.24	-0.21	1.35	
8,557.0	4.80	89.30	8,262.5	27.6	2,116.1	2,115.9	0.38	-0.31	-2.60	
8,653.0	4.00	91.90	8,358.2	27.5	2,123.5	2,123.3	0.86	-0.83	2.71	

<b>Company:</b>	Caerus Oil & Gas	<b>Local Co-ordinate Reference:</b>	Well ELU O13 FED 24C-13 496
<b>Project:</b>	Rio Blanco County, CO	<b>TVD Reference:</b>	RKB=26' @ 8144.0usft (Nabors B4)
<b>Site:</b>	ELU O13 496 Pad	<b>MD Reference:</b>	RKB=26' @ 8144.0usft (Nabors B4)
<b>Well:</b>	ELU O13 FED 24C-13 496	<b>North Reference:</b>	True
<b>Wellbore:</b>	Wellbore #1	<b>Survey Calculation Method:</b>	Minimum Curvature
<b>Design:</b>	Wellbore #1	<b>Database:</b>	EDM 5000.1 Single User Db

Survey										
Measured Depth (usft)	Inclination (°)	Azimuth (°)	Vertical Depth (usft)	+N/-S (usft)	+E/-W (usft)	Vertical Section (usft)	Dogleg Rate (°/100usft)	Build Rate (°/100usft)	Turn Rate (°/100usft)	
8,749.0	3.90	94.20	8,454.0	27.2	2,130.1	2,129.9	0.20	-0.10	2.40	
8,845.0	3.60	95.60	8,549.8	26.6	2,136.4	2,136.1	0.33	-0.31	1.46	
8,941.0	2.90	92.60	8,645.6	26.2	2,141.8	2,141.6	0.75	-0.73	-3.13	
8,953.4	2.84	93.89	8,658.0	26.2	2,142.4	2,142.2	0.71	-0.48	10.42	
9,036.0	2.50	103.90	8,740.5	25.6	2,146.2	2,146.0	0.70	-0.41	12.12	
9,132.0	2.60	106.00	8,836.4	24.5	2,150.3	2,150.1	0.14	0.10	2.19	
9,228.0	2.20	109.60	8,932.4	23.3	2,154.2	2,153.9	0.45	-0.42	3.75	
9,324.0	2.50	110.30	9,028.3	22.0	2,157.9	2,157.7	0.31	0.31	0.73	
9,420.0	2.50	120.10	9,124.2	20.2	2,161.6	2,161.4	0.44	0.00	10.21	
9,517.0	1.90	92.20	9,221.1	19.1	2,165.1	2,164.9	1.25	-0.62	-28.76	
9,613.0	1.10	88.80	9,317.1	19.0	2,167.6	2,167.4	0.84	-0.83	-3.54	
9,709.0	0.40	158.90	9,413.1	18.7	2,168.6	2,168.4	1.08	-0.73	73.02	
9,805.0	0.80	168.10	9,509.1	17.8	2,168.9	2,168.7	0.43	0.42	9.58	
9,901.0	1.10	191.80	9,605.1	16.2	2,168.8	2,168.7	0.51	0.31	24.69	
9,997.0	1.10	225.20	9,701.0	14.7	2,168.0	2,167.8	0.66	0.00	34.79	
10,093.0	1.70	225.90	9,797.0	13.0	2,166.3	2,166.2	0.63	0.63	0.73	
10,189.0	0.80	341.00	9,893.0	12.7	2,165.1	2,164.9	2.25	-0.94	119.90	
10,285.0	1.20	349.50	9,989.0	14.3	2,164.7	2,164.5	0.44	0.42	8.85	
10,381.0	1.10	352.30	10,085.0	16.2	2,164.4	2,164.2	0.12	-0.10	2.92	
10,477.0	0.60	336.50	10,180.9	17.6	2,164.0	2,163.9	0.57	-0.52	-16.46	
10,573.0	0.40	296.80	10,276.9	18.2	2,163.5	2,163.4	0.40	-0.21	-41.35	
10,669.0	0.40	270.10	10,372.9	18.3	2,162.9	2,162.7	0.19	0.00	-27.81	
10,765.0	0.30	212.90	10,468.9	18.1	2,162.4	2,162.3	0.36	-0.10	-59.58	
10,860.0	0.80	199.50	10,563.9	17.3	2,162.1	2,161.9	0.54	0.53	-14.11	
10,956.0	1.00	219.30	10,659.9	16.0	2,161.3	2,161.2	0.38	0.21	20.63	
11,052.0	1.30	205.90	10,755.9	14.4	2,160.3	2,160.2	0.42	0.31	-13.96	
11,148.0	1.40	208.80	10,851.9	12.4	2,159.3	2,159.1	0.13	0.10	3.02	
11,243.0	1.50	202.00	10,946.8	10.2	2,158.2	2,158.1	0.21	0.11	-7.16	
11,339.0	1.70	240.00	11,042.8	8.3	2,156.5	2,156.4	1.10	0.21	39.58	
11,435.0	1.80	251.40	11,138.8	7.1	2,153.9	2,153.8	0.38	0.10	11.88	
11,531.0	2.00	240.80	11,234.7	5.8	2,151.0	2,150.9	0.42	0.21	-11.04	
11,626.0	2.10	222.70	11,329.7	3.7	2,148.4	2,148.3	0.69	0.11	-19.05	
11,722.0	3.10	225.80	11,425.6	0.6	2,145.3	2,145.3	1.05	1.04	3.23	
11,818.0	2.90	224.50	11,521.4	-2.9	2,141.7	2,141.7	0.22	-0.21	-1.35	
11,914.0	3.30	216.30	11,617.3	-6.9	2,138.4	2,138.4	0.62	0.42	-8.54	
12,009.0	3.30	214.50	11,712.1	-11.3	2,135.2	2,135.3	0.11	0.00	-1.89	
12,105.0	3.20	213.50	11,808.0	-15.8	2,132.2	2,132.3	0.12	-0.10	-1.04	
12,201.0	2.50	218.30	11,903.9	-19.7	2,129.4	2,129.5	0.77	-0.73	5.00	
12,297.0	2.30	213.50	11,999.8	-23.0	2,127.1	2,127.2	0.30	-0.21	-5.00	
12,393.0	2.00	215.30	12,095.7	-25.9	2,125.0	2,125.2	0.32	-0.31	1.88	
12,489.0	1.50	205.00	12,191.7	-28.4	2,123.5	2,123.7	0.61	-0.52	-10.73	
12,585.0	1.80	187.30	12,287.6	-31.1	2,122.8	2,123.0	0.61	0.31	-18.44	
12,681.0	1.60	193.50	12,383.6	-33.9	2,122.3	2,122.5	0.28	-0.21	6.46	
12,795.0	1.30	206.30	12,497.5	-36.6	2,121.4	2,121.6	0.39	-0.26	11.23	

<b>Company:</b>	Caerus Oil & Gas	<b>Local Co-ordinate Reference:</b>	Well ELU O13 FED 24C-13 496
<b>Project:</b>	Rio Blanco County, CO	<b>TVD Reference:</b>	RKB=26' @ 8144.0usft (Nabors B4)
<b>Site:</b>	ELU O13 496 Pad	<b>MD Reference:</b>	RKB=26' @ 8144.0usft (Nabors B4)
<b>Well:</b>	ELU O13 FED 24C-13 496	<b>North Reference:</b>	True
<b>Wellbore:</b>	Wellbore #1	<b>Survey Calculation Method:</b>	Minimum Curvature
<b>Design:</b>	Wellbore #1	<b>Database:</b>	EDM 5000.1 Single User Db

Survey									
Measured Depth (usft)	Inclination (°)	Azimuth (°)	Vertical Depth (usft)	+N/-S (usft)	+E/-W (usft)	Vertical Section (usft)	Dogleg Rate (°/100usft)	Build Rate (°/100usft)	Turn Rate (°/100usft)
TD @ 12855.0' MD / 12557.5' TVD									
12,855.0	1.30	206.30	12,557.5	-37.8	2,120.8	2,121.0	0.00	0.00	0.00

Design Annotations				
Measured Depth (usft)	Vertical Depth (usft)	Local Coordinates		Comment
		+N/-S (usft)	+E/-W (usft)	
111.0	111.0	-0.6	0.5	Gyro Tie-in @ 111.0' MD / 111.0' TVD
12,855.0	12,557.5	-37.8	2,120.8	TD @ 12855.0' MD / 12557.5' TVD