



Comp. ANADARKO PETROLEUM CORP
 Well SAWDEY 6-30
 Field WATTENBERG
 Co. WELD
 State CO

Company ANADARKO PETROLEUM CORP
 Well SAWDEY 6-30
 Field WATTENBERG
 County WELD State CO

Location: API #: 05-123-30352
 SEC 30 TWP 2N RGE 68W
 SE/NW
 PERM
 Permanent Datum GL
 Log Measured From KB 15' Elevation 4993'
 Drilling Measured From KB Above Perm. Datum
 K.B. 5008'
 D.F. 5007'
 G.L. 4993'

Date of Service	MAR 8TH, 2024			
Run Number	ONE			
Depth Driller or P8TD	7799'			
Depth Logger	4503			
Bottom Log Interval	4500			
Top Log Interval	SURFACE			
Open Hole Size	7.875"			
Type Fluid	WATER			
Fluid Level	SURFACE			
Fluid Density	8.3#			
Max. Recorded Temperature	126° F			
Max. Wellhead Pressure	ZERO			
Wellhead Connection	7 1/16" 5K			
Estimated Cement Top	SEE LOG			
Unit Number	5074			
Wireline Size	9/32"			
Location	PLATTEVILLE, CO			
Recorded By	GREG JACKSON			
Witnessed By	VICTOR IDELFONSO			
Tubing Record	Size	WV/Ft	Top	Bottom
Surface Casing	8-5/8		24#	879'
Production Casing	4 1/2		11.6#	7783'
Liner Record				

<<< Fold Here >>>

All interpretations are opinions based on inferences from electrical or other measurements and Pioneer Wireline Services, LLC cannot and does not guarantee the accuracy or correctness of any interpretation, and Pioneer Wireline Services, LLC will not be liable or responsible for any loss, costs, damages, or expenses incurred or sustained by anyone resulting from any interpretation made by any of our officers, agents or employees.

Comments

N/A DENOTES NOT AVAILABLE OR NON-APPLICABLE.
 LOG CORRELATED TO EXISTING BOND LOG PULLED OFF STATE WEB SITE DATED SEP 9TH 2009

THANK YOU FOR USING PIONEER ENERGY SERVICES!

Your Pioneer Energy Services Crew Engineer: G. JACKSON Operator: C. LEEPER Operator: S. PEREZ Operator:	Tool Data - Services BOND GAMMA RAY/CCL	Serial Number
---	---	---------------

Sensor	Offset (ft)	Schematic	Description	Length (ft)	O.D. (in)	Weight (lb)
			Cable Head-Titan_144 1 7/16" Titan Cable Head	1.03	1.44	2.00
			Centralizer-275 Probe 2 3/4" Probe Adjustable Spring Centralizer	2.88	2.75	15.00
WVFS8	12.09		PROBE-RBT-DIGITAL-RBL-DC (FW1304-34) Probe 2 3/4" Radii Bond-Corrosion Package	8.75	2.75	100.00
WVFS7	12.09					
WVFS6	12.09					
WVFS5	12.09					
WVFS4	12.09					
WVFS3	12.09					
WVFS2	12.09					
WVFS1	12.09					
WVFCAL	12.09					
WVF3FT	12.09					
WVF5FT	11.09					
HEADVOLT	7.90					
			Centralizer-275 Probe 2 3/4" Probe Adjustable Spring Centralizer	2.88	2.75	15.00
CCL	4.20					
GCT_TEMP	3.41					
GR	2.83		PROBE-GR/CCL-DIGITAL-275 Probe GCT (140181) Probe 2 3/4" Gamma Ray/Temp/CCL	4.69	2.75	60.00
			Bullnose-PROBE Probe Go Pin Pressure Cap	0.33	1.38	1.00

Dataset: oxy_sawdey 6-30_rcbl_3-8-24.db: field/well/run1/pass2
 Total length: 20.56 ft
 Total weight: 193.00 lb
 O.D.: 2.75 in

Log Variables

DatabaseC:\ProgramData\Warrior\Data\oxy_sawdey 6-30_rcbl_3-8-24.db
 Dataset field/well/run1/pass2/_vars_

Top - Bottom

BOREID in 7.875	BOTTEMP degF 100	CASEOD in 4.5	CASETHCK in 0	CASEWGHT lb/ft 11.6	MAXAMPL mV 81.2	MINAMPL mV 1
MINATTN db/ft 0.08	PERFS No	PPT usec 0	SRFTEMP degF 0	TDEPTH ft 0		

Variable Description

BOREID : Borehole I.D.
 BOTTEMP : Bottom Hole Temperature
 CASEOD : Casing O.D.
 CASETHCK : Casing Thickness
 CASEWGHT : Casing Weight
 MAXAMPL : Maximum Amplitude

MINAMPL : Minimum Amplitude
 MINATTN : Minimum Attenuation
 PERFS : Perforation Flag
 PPT : Predicted Pipe Time
 SRFTEMP : Surface Temperature
 TDEPTH : Total Depth

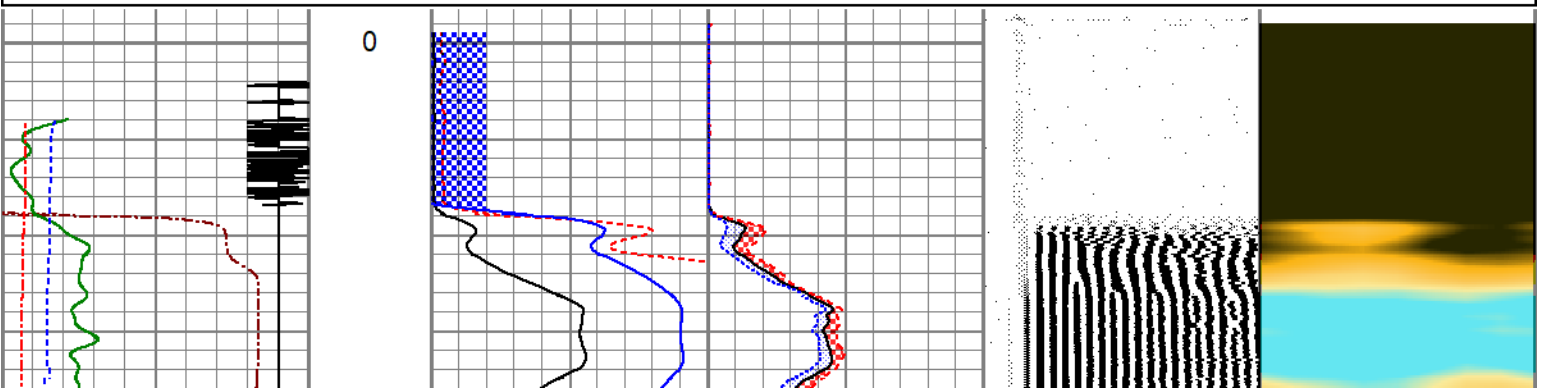


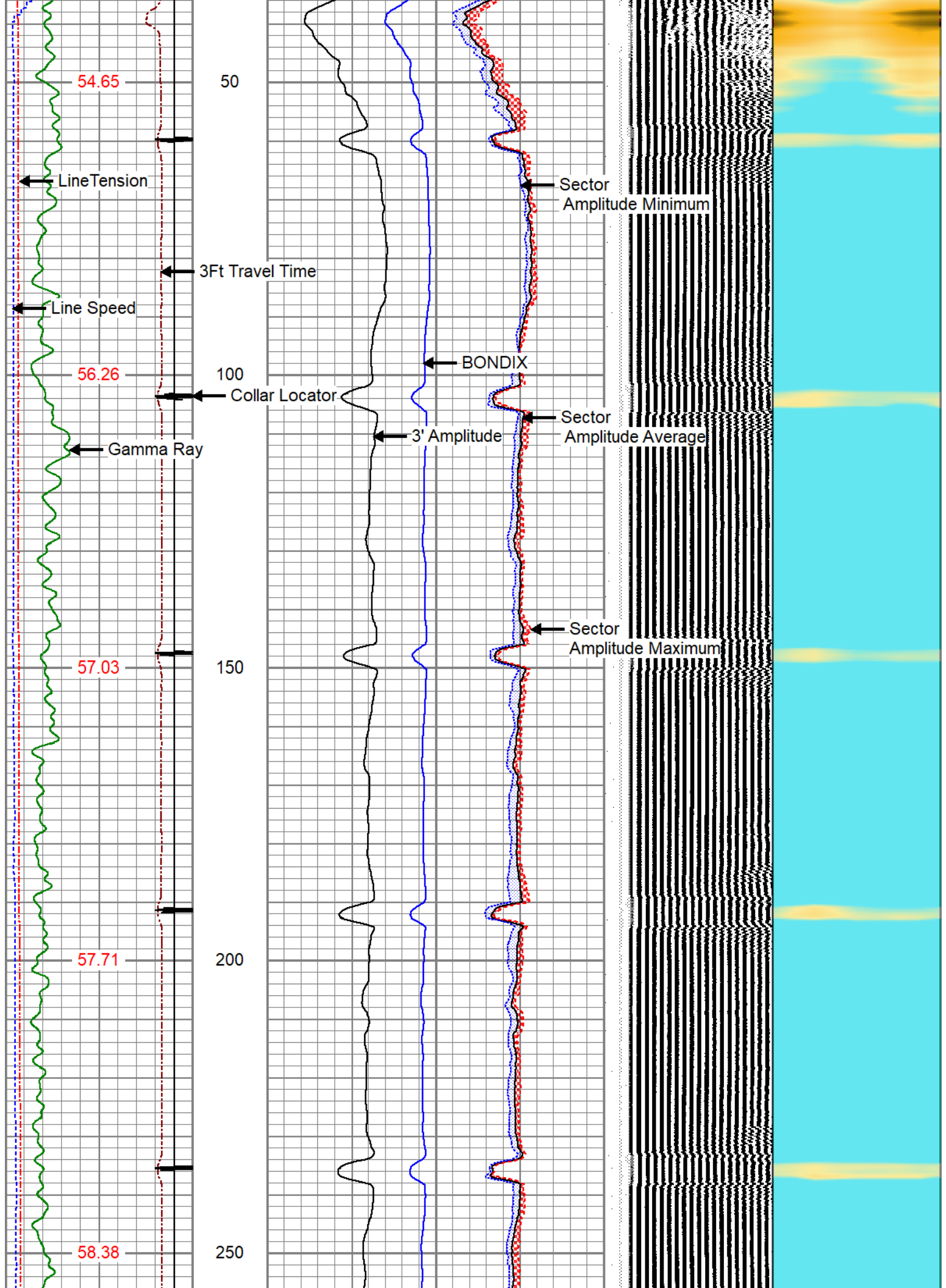
MAIN LOG

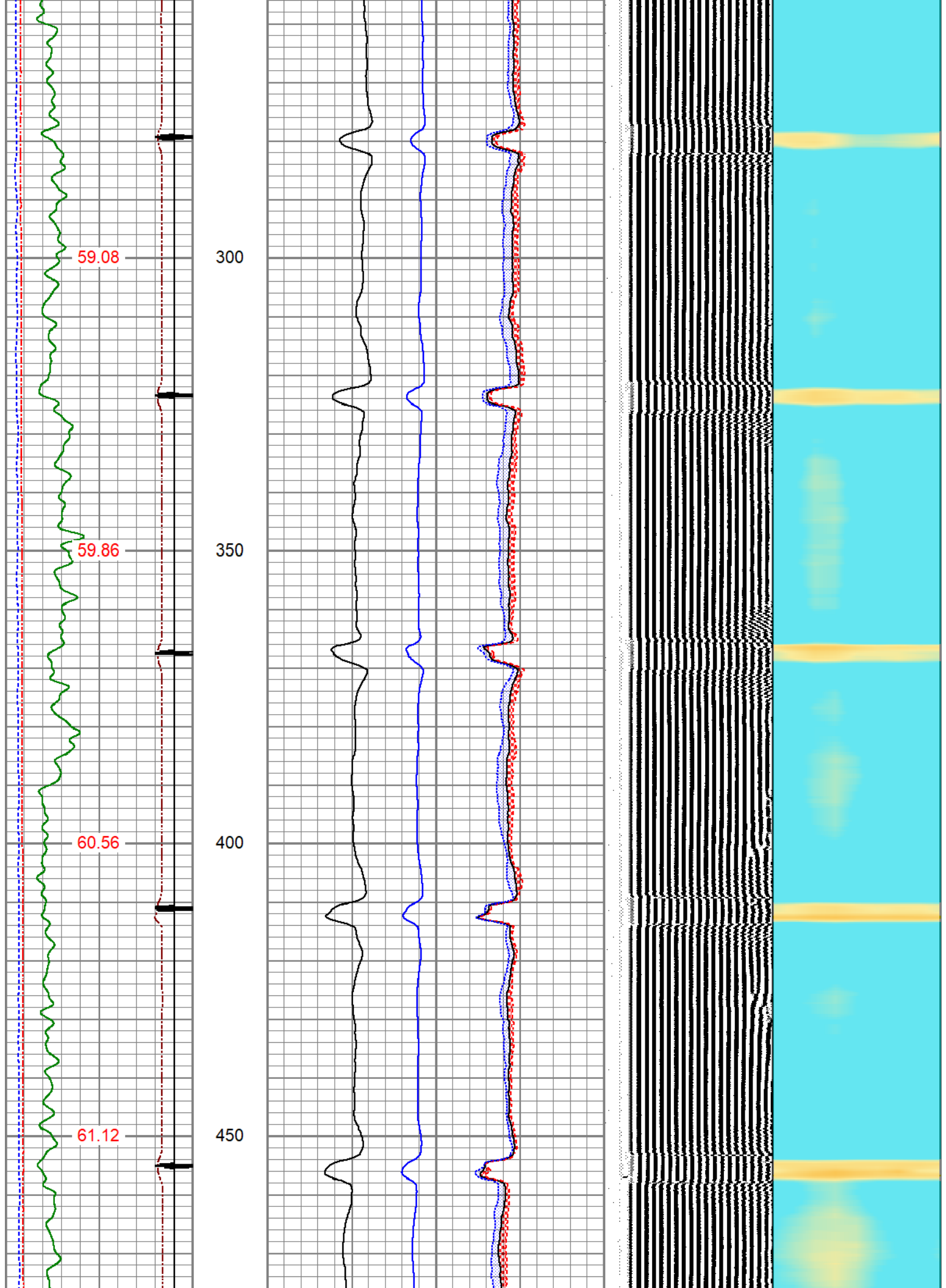
ZERO PSI APPLIED AT SURFACE

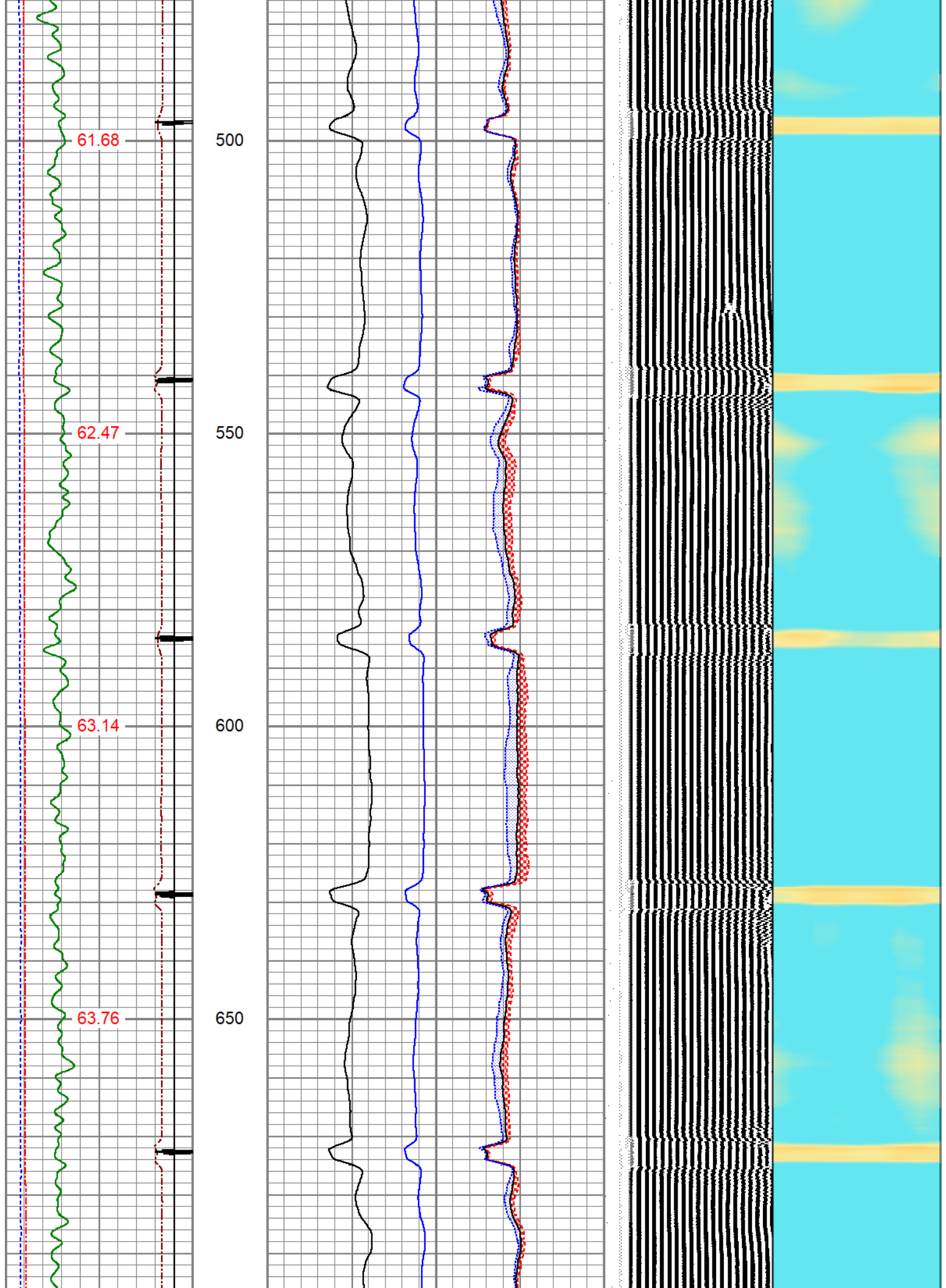
Database File oxy_sawdey 6-30_rcbl_3-8-24.db
 Dataset Pathname pass2
 Presentation Format pinr_scbl
 Dataset Creation Fri Mar 08 15:31:29 2024
 Charted by Depth in Feet scaled 1:240

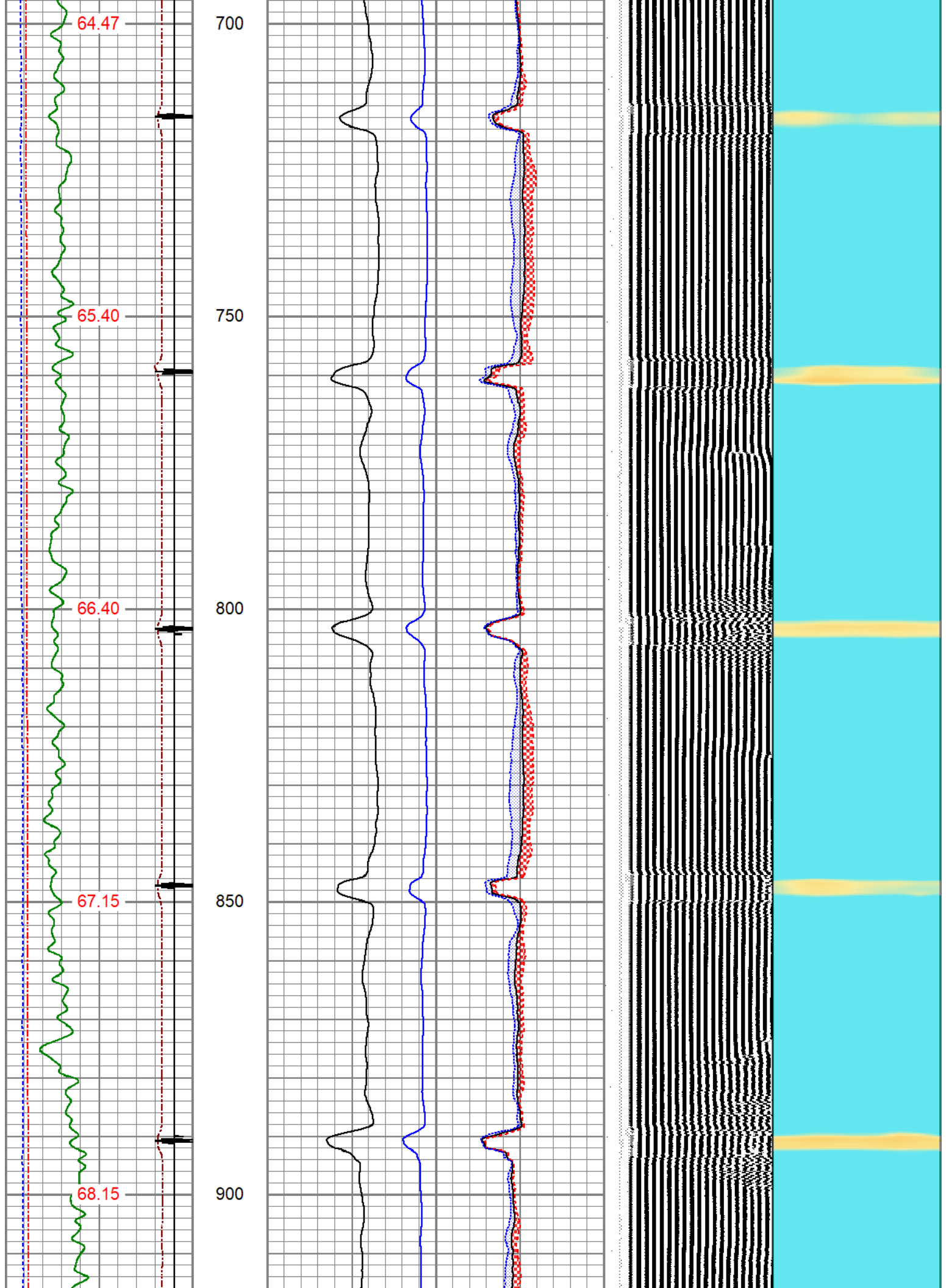
3Ft Travel Time 575 (usec) 175	3' Amplitude 0 (mV) 100	Sector Amplitude Average	VDL (usec) 1200	1 Sector Map 8
-9 Collar Locator 1	3' Amplified Amplitude X 5	0 150		
Gamma Ray 0 (GAPI) 150	0 (mV) 20	Sector Amplitude Maximum		
LineTension 0 (lb) 2000	1 BONDIX 0	0 150		
Line Speed -100 (ft/min) 100		Sector Amplitude Minimum		
TEMP (degF)		0 150		

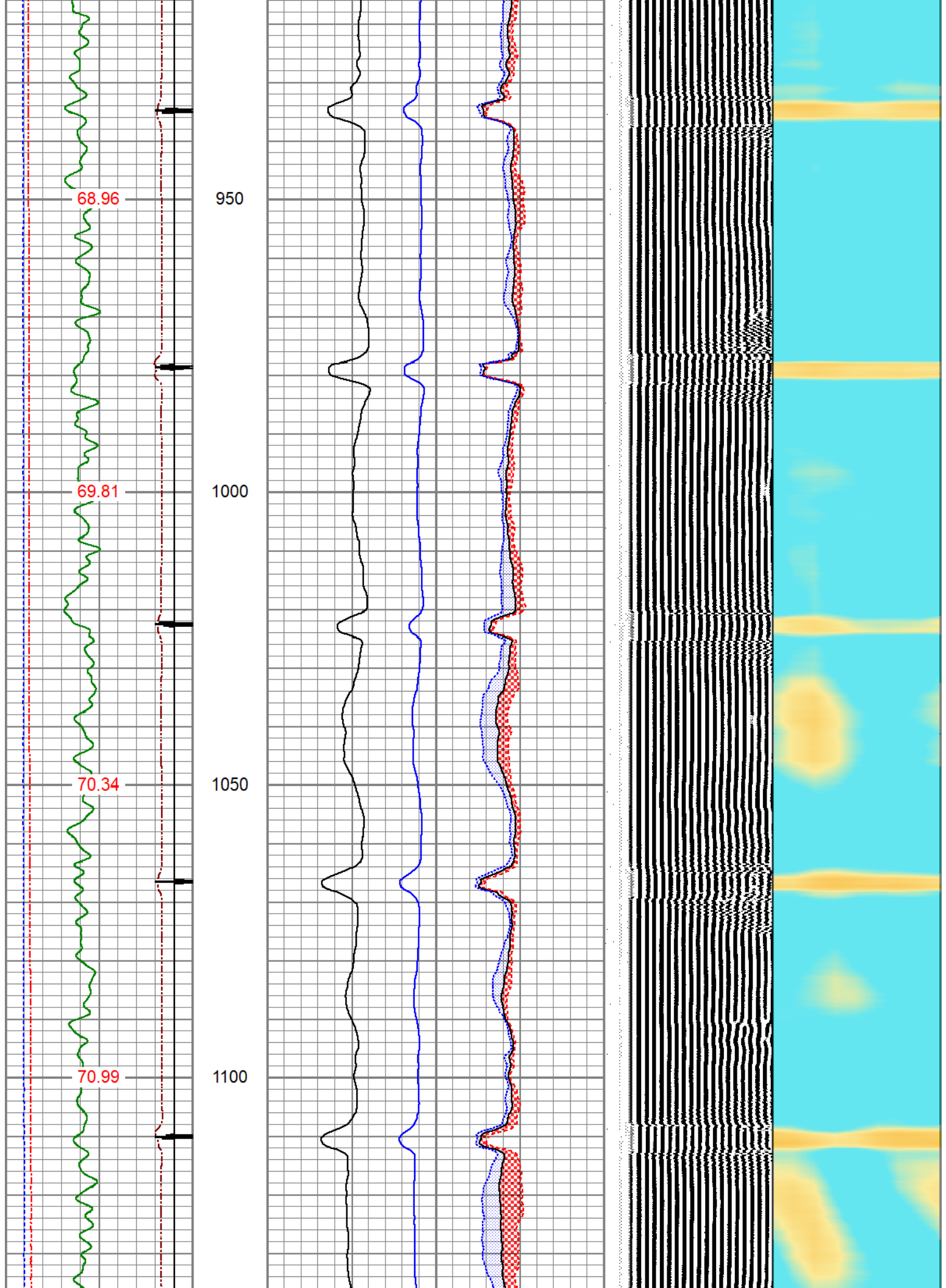


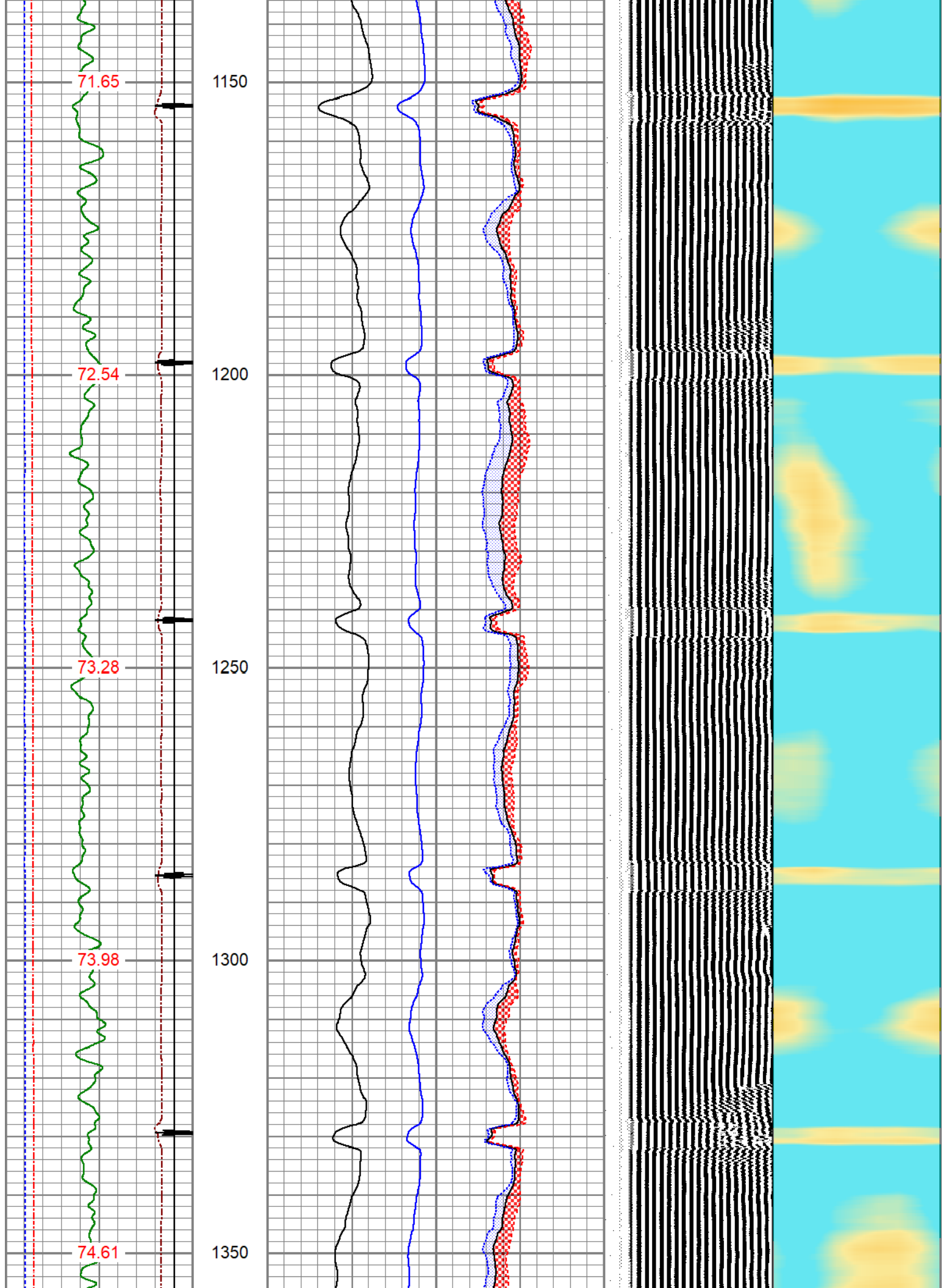


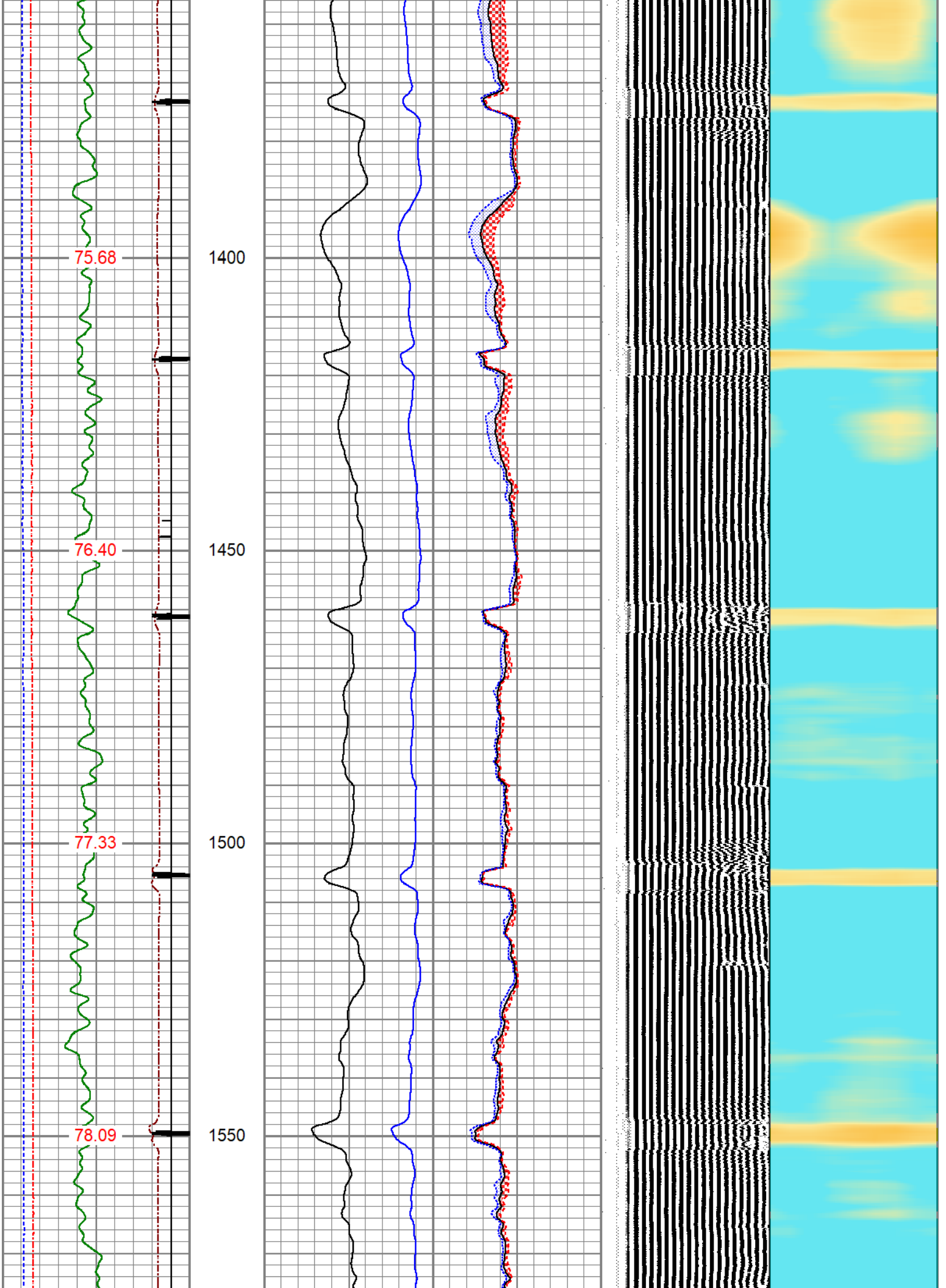


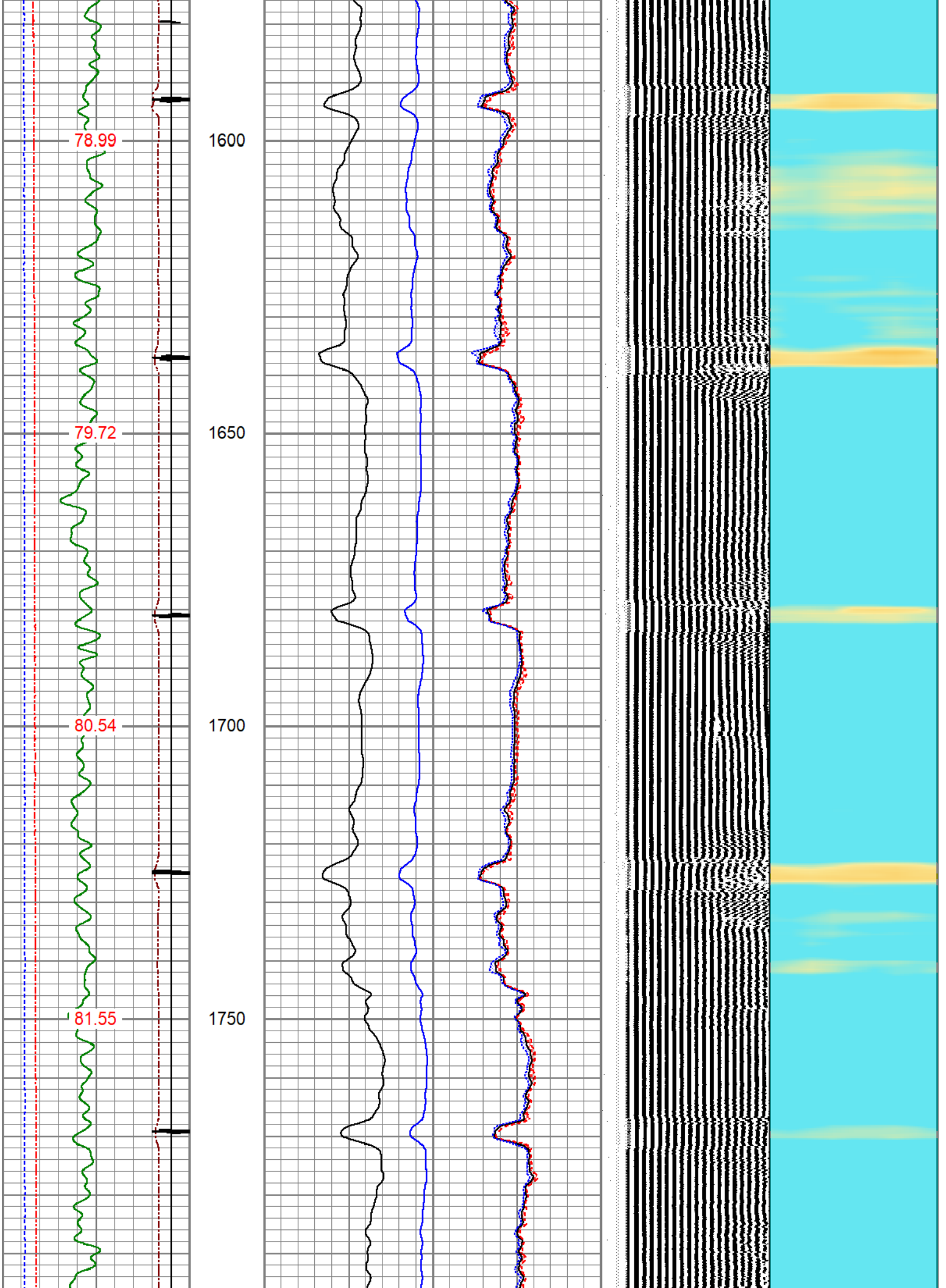


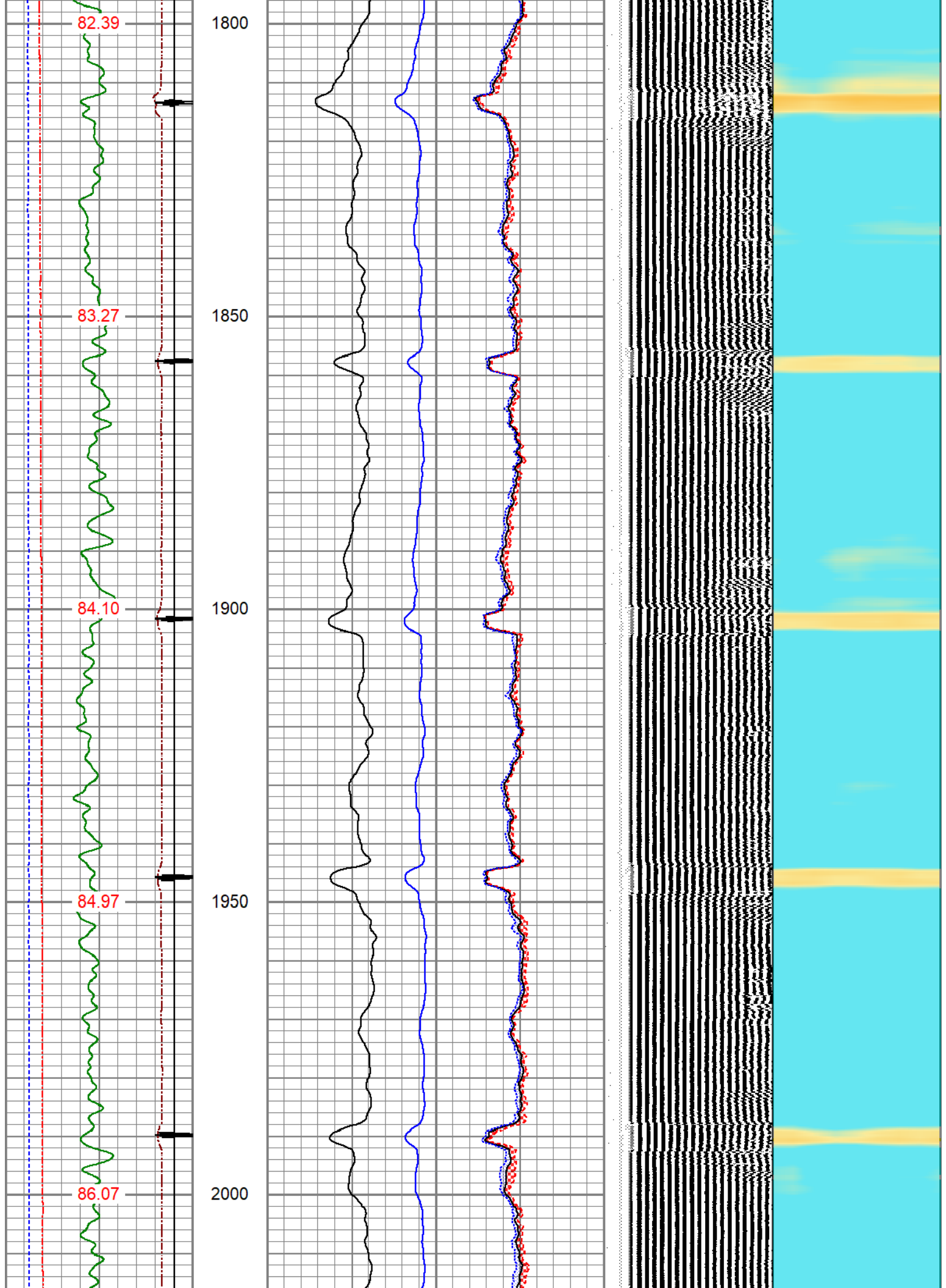


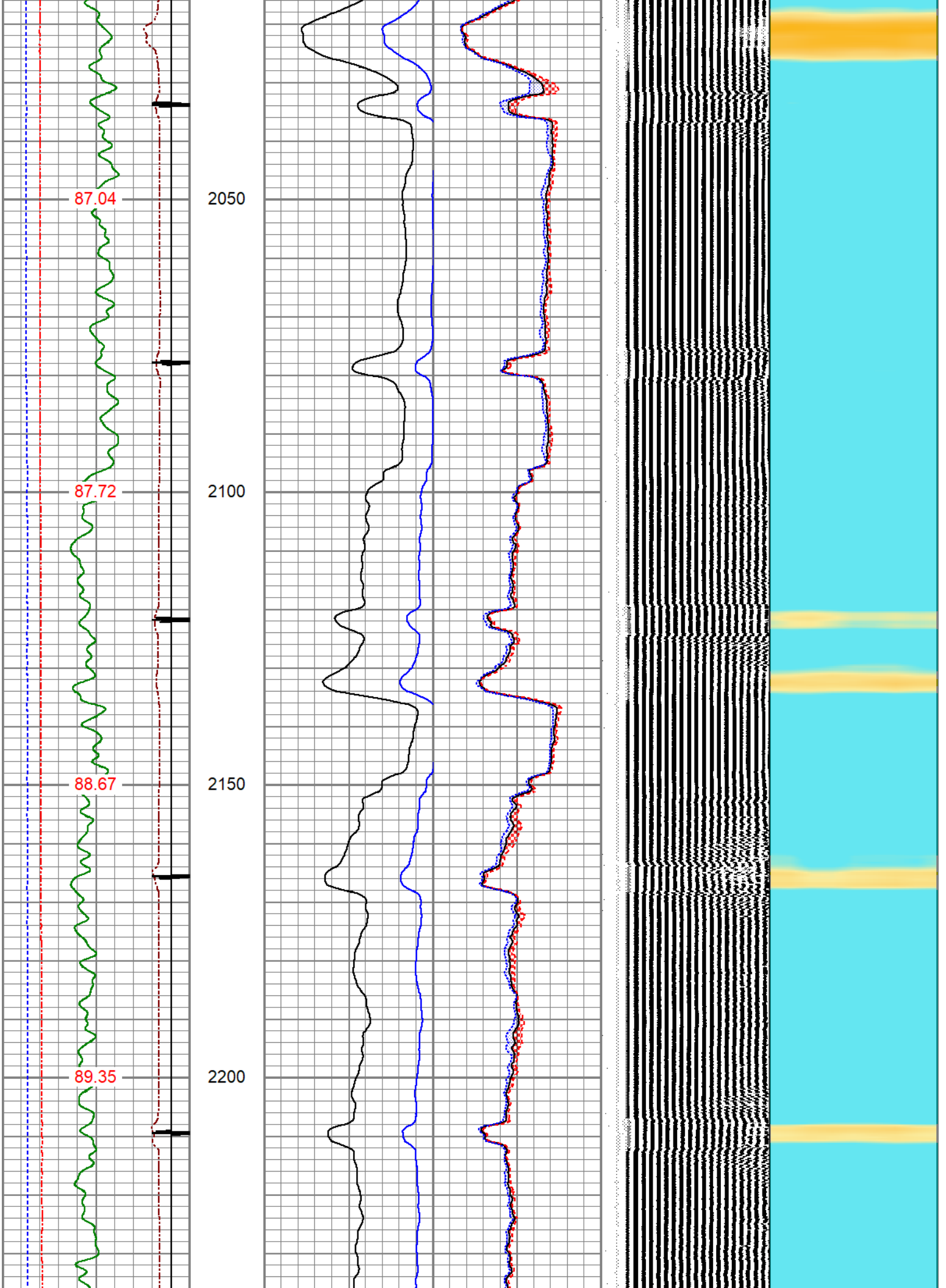


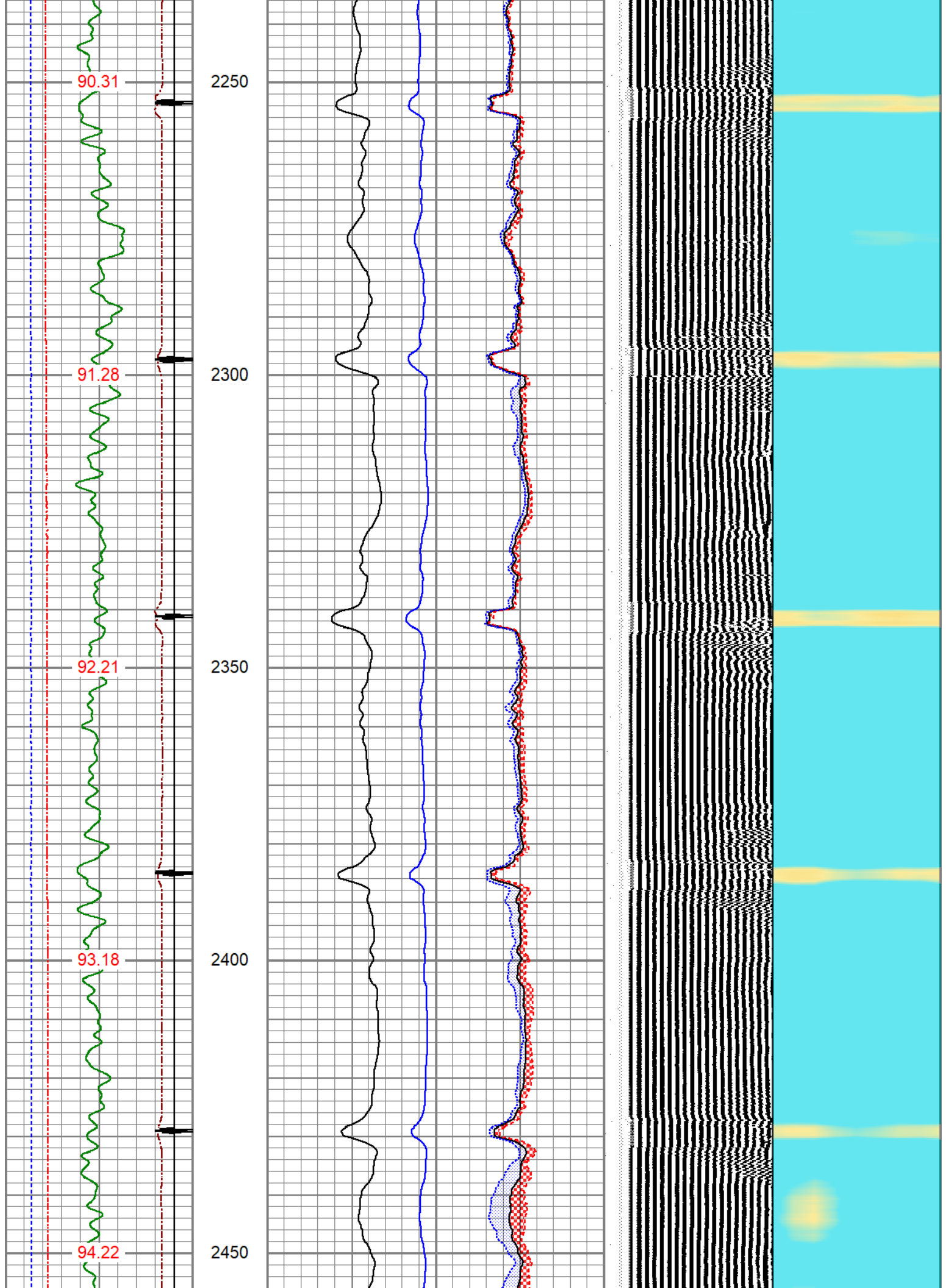


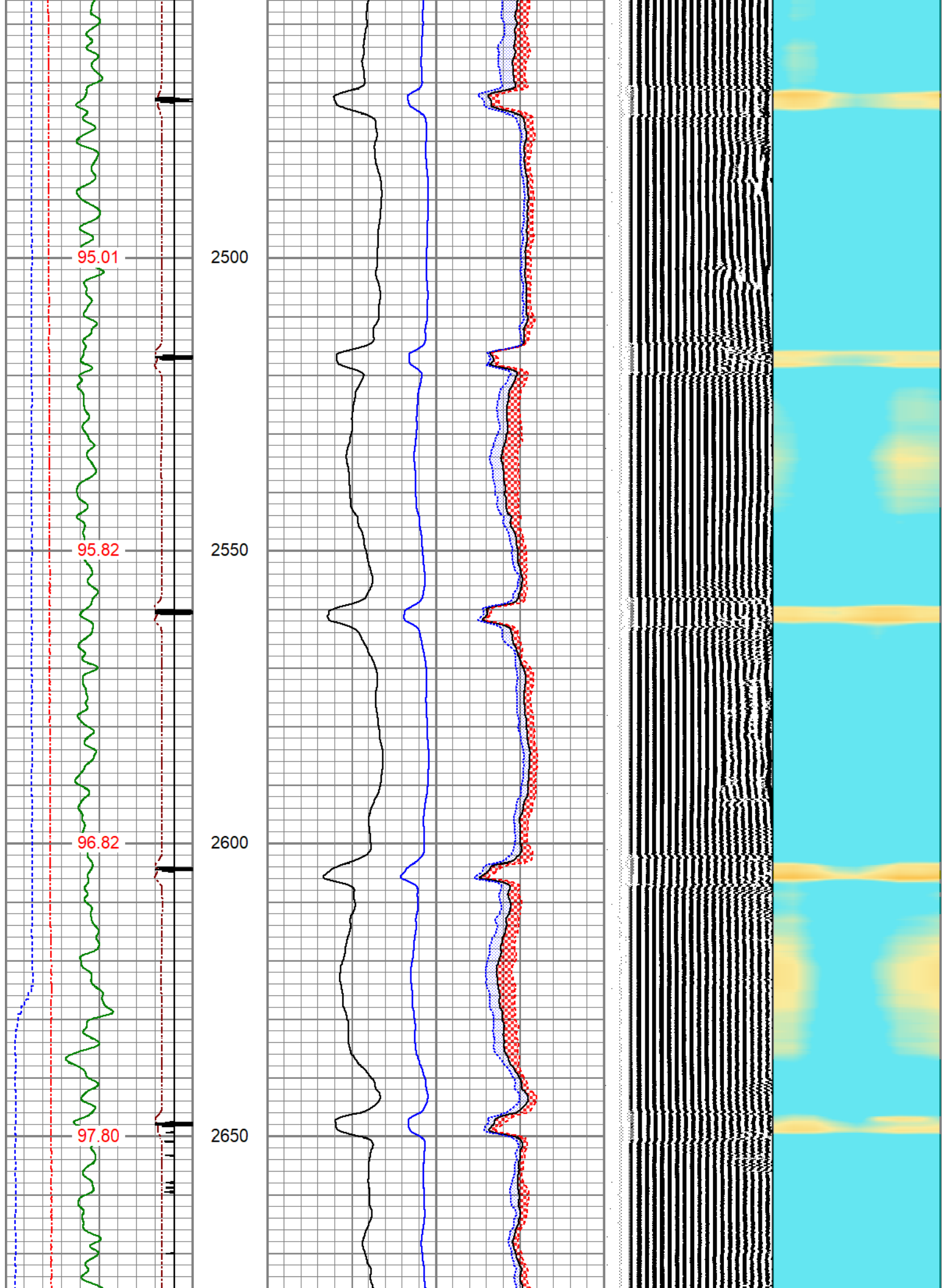


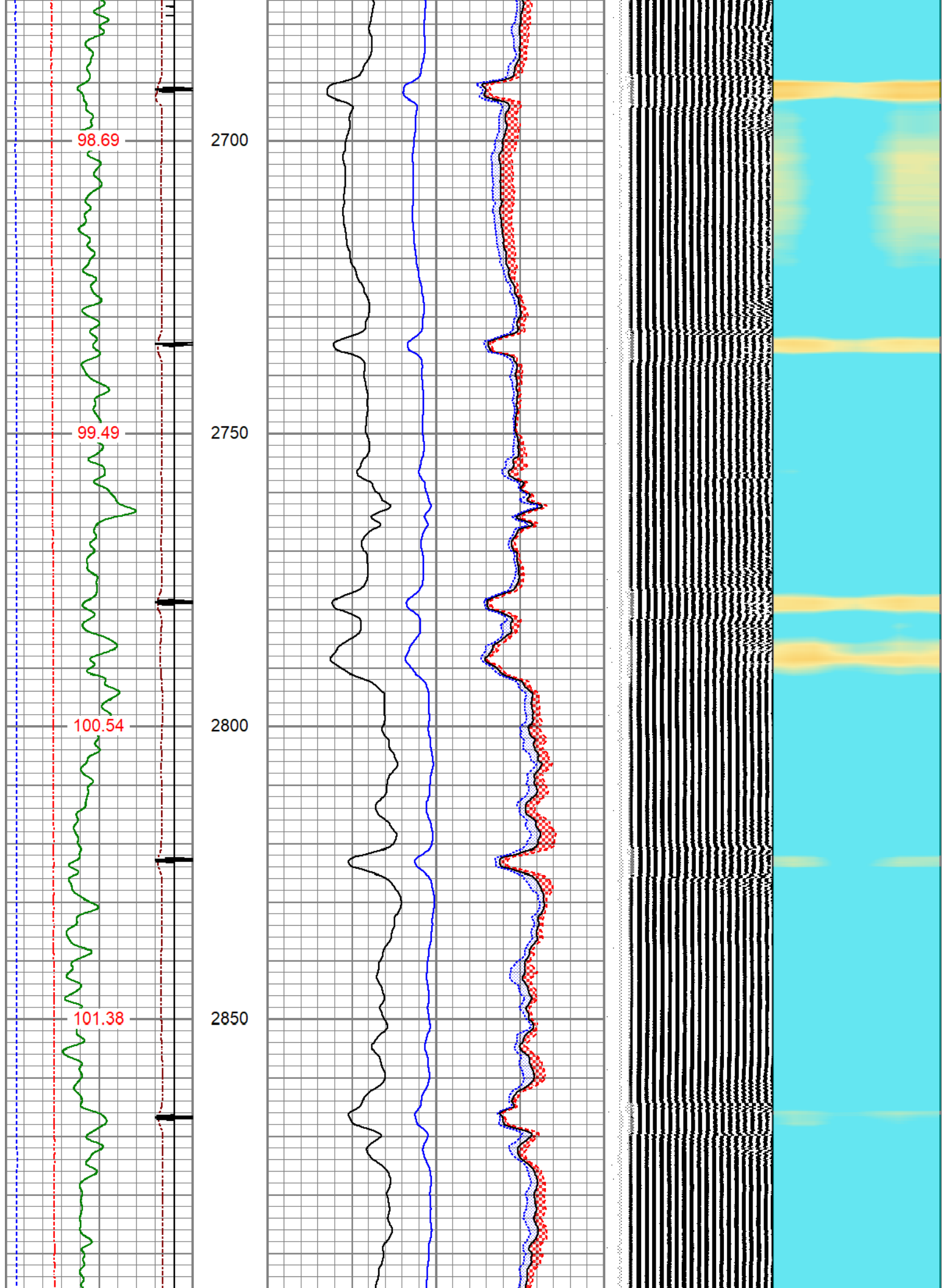


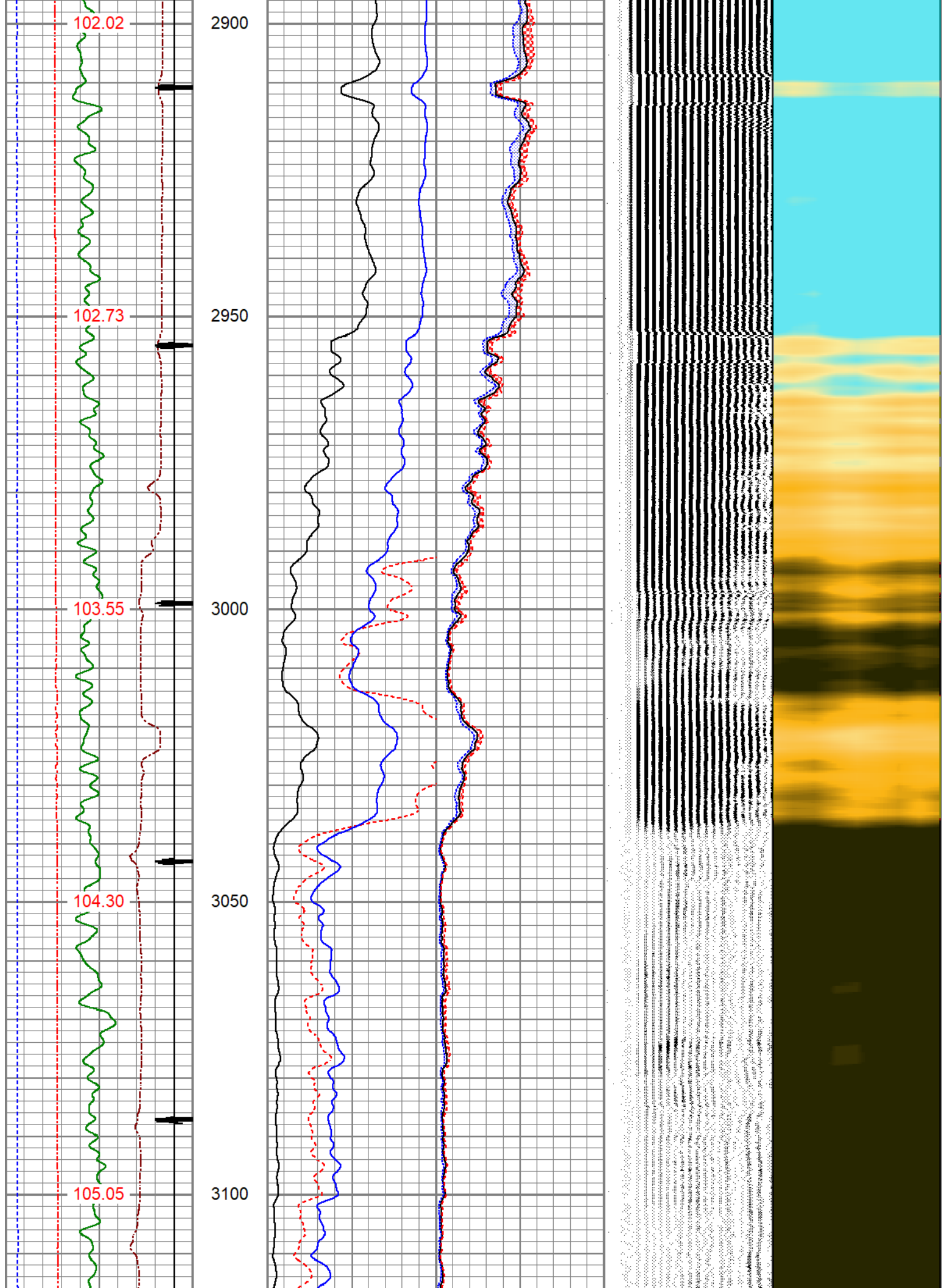


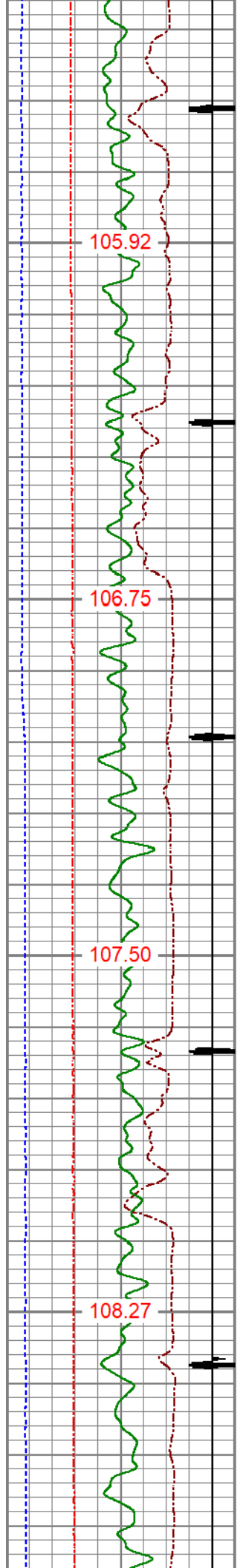










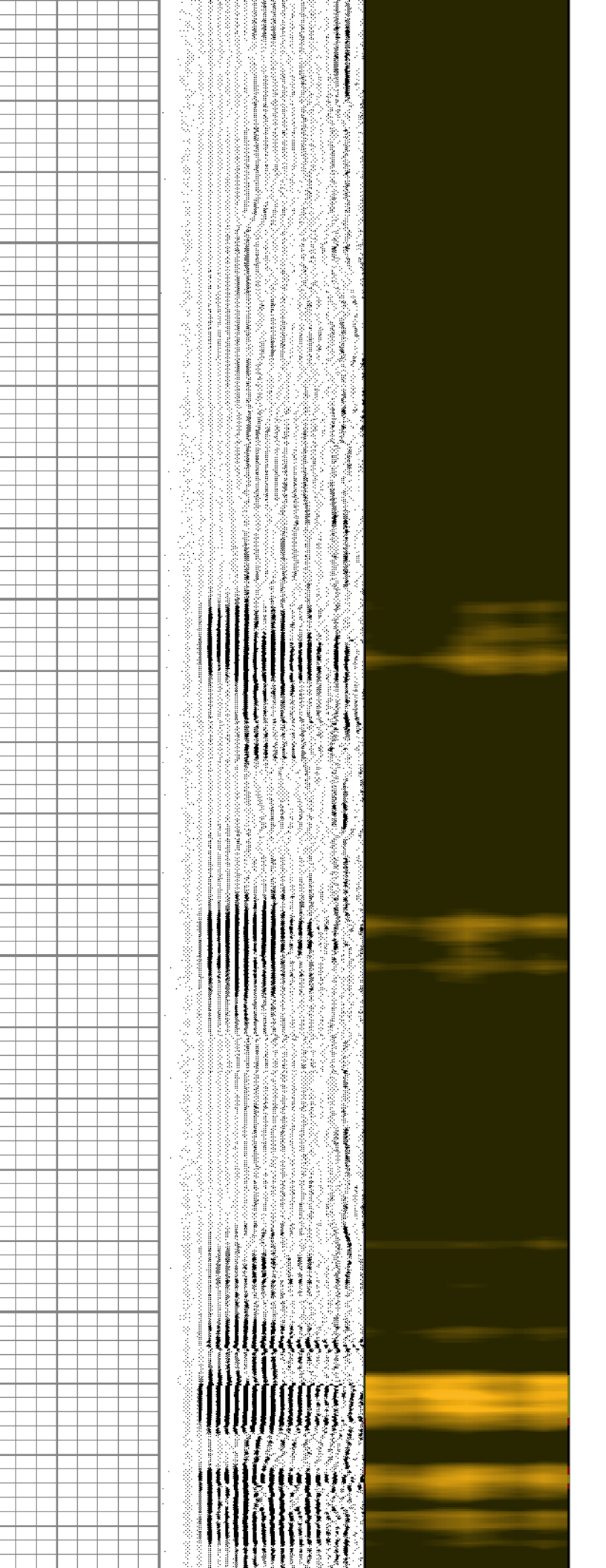
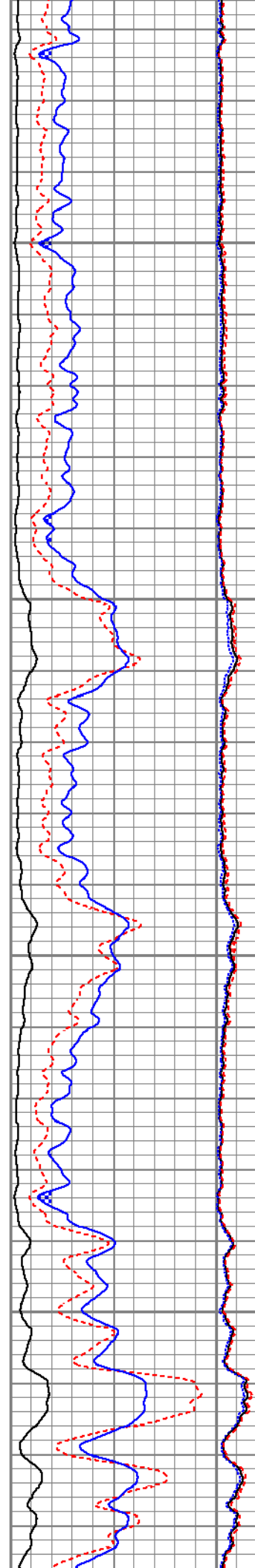


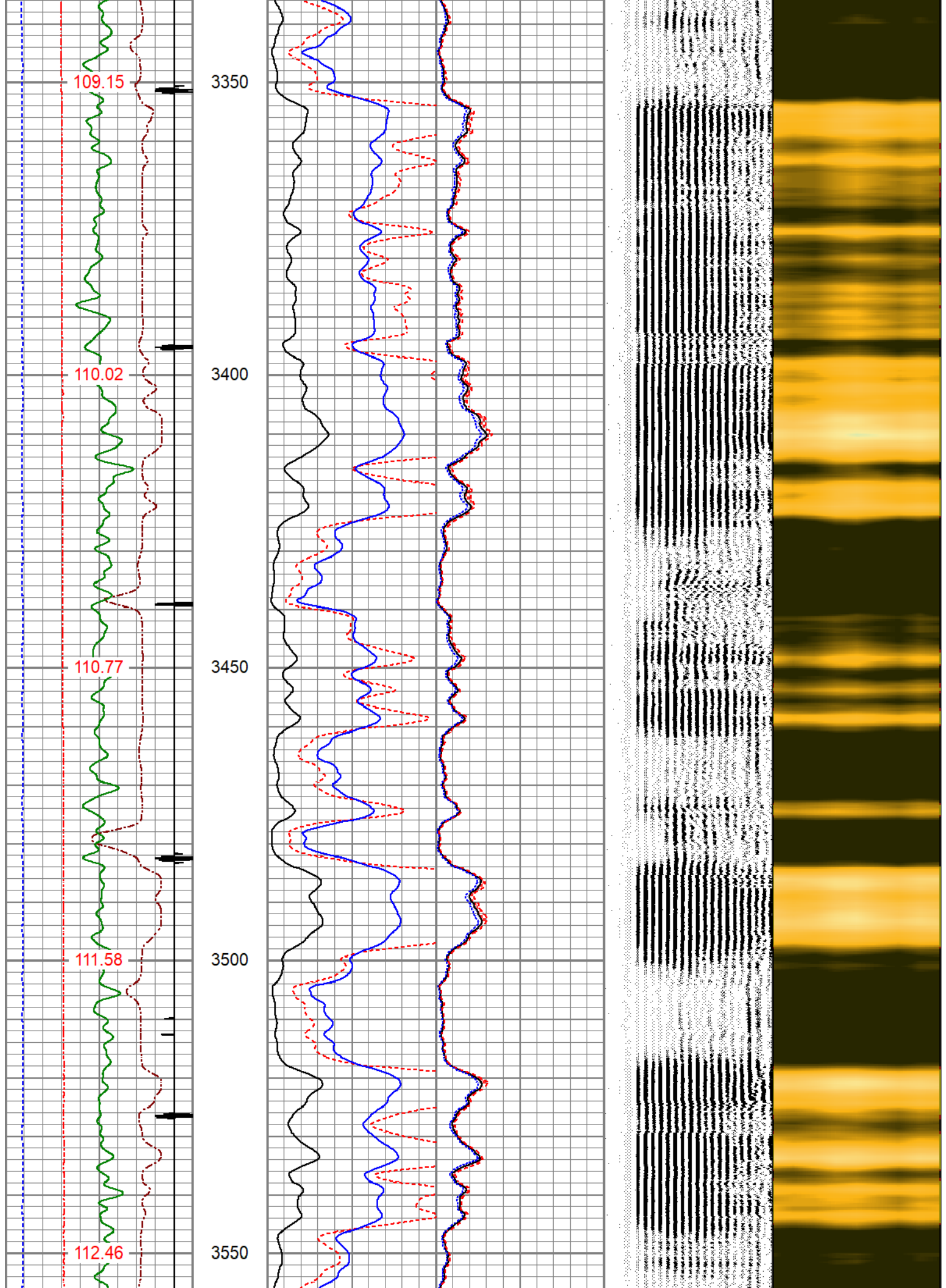
3150

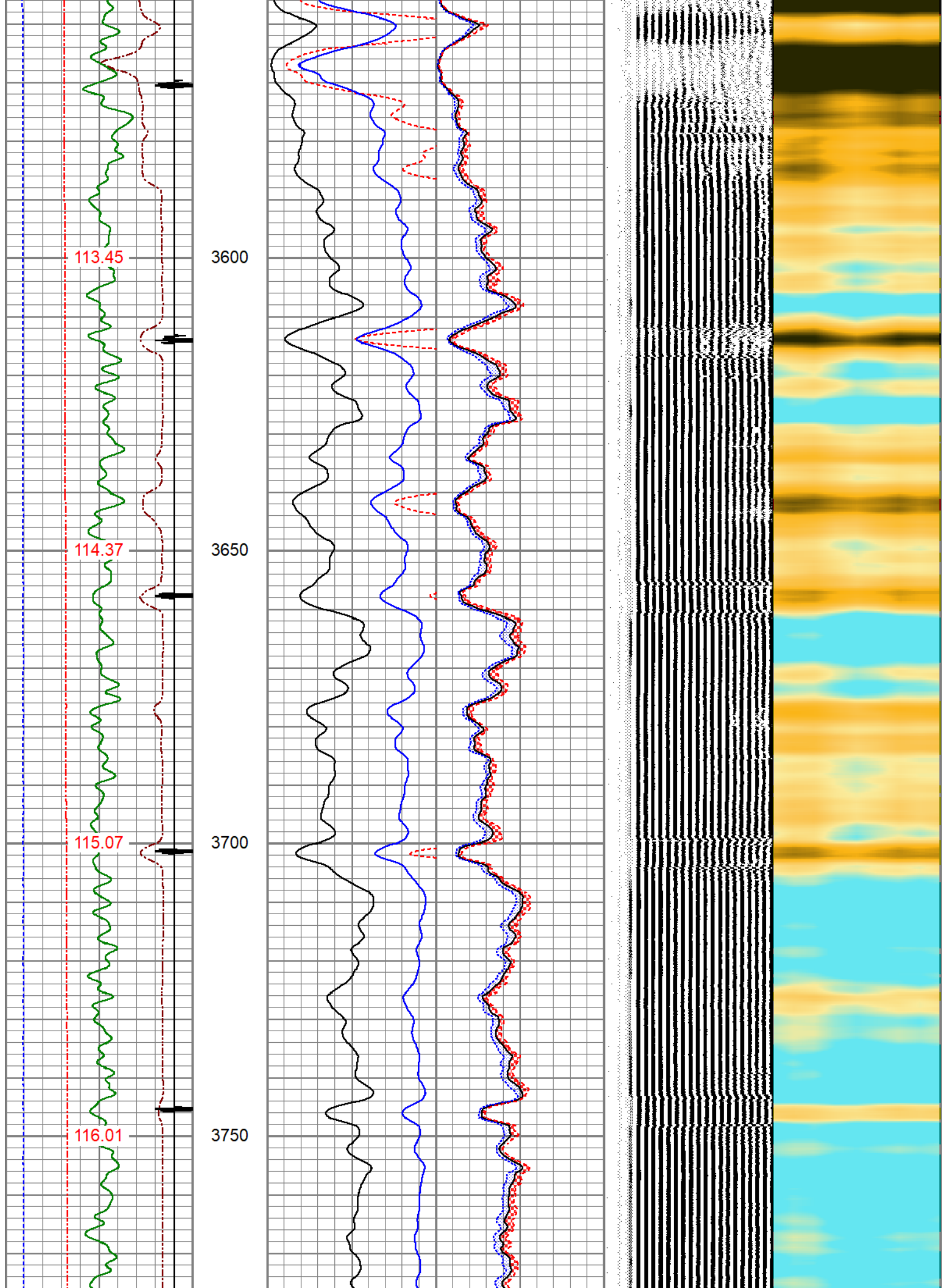
3200

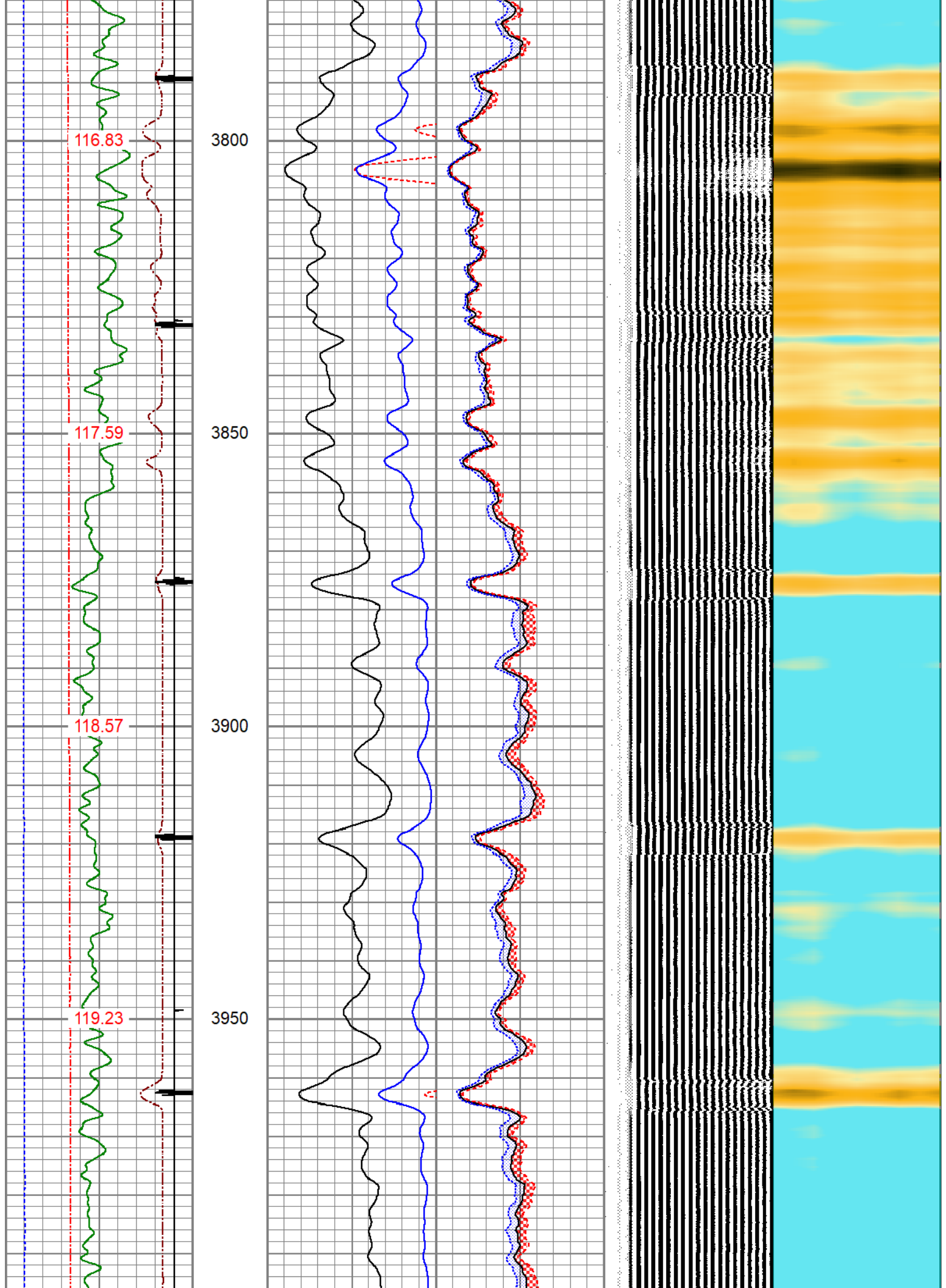
3250

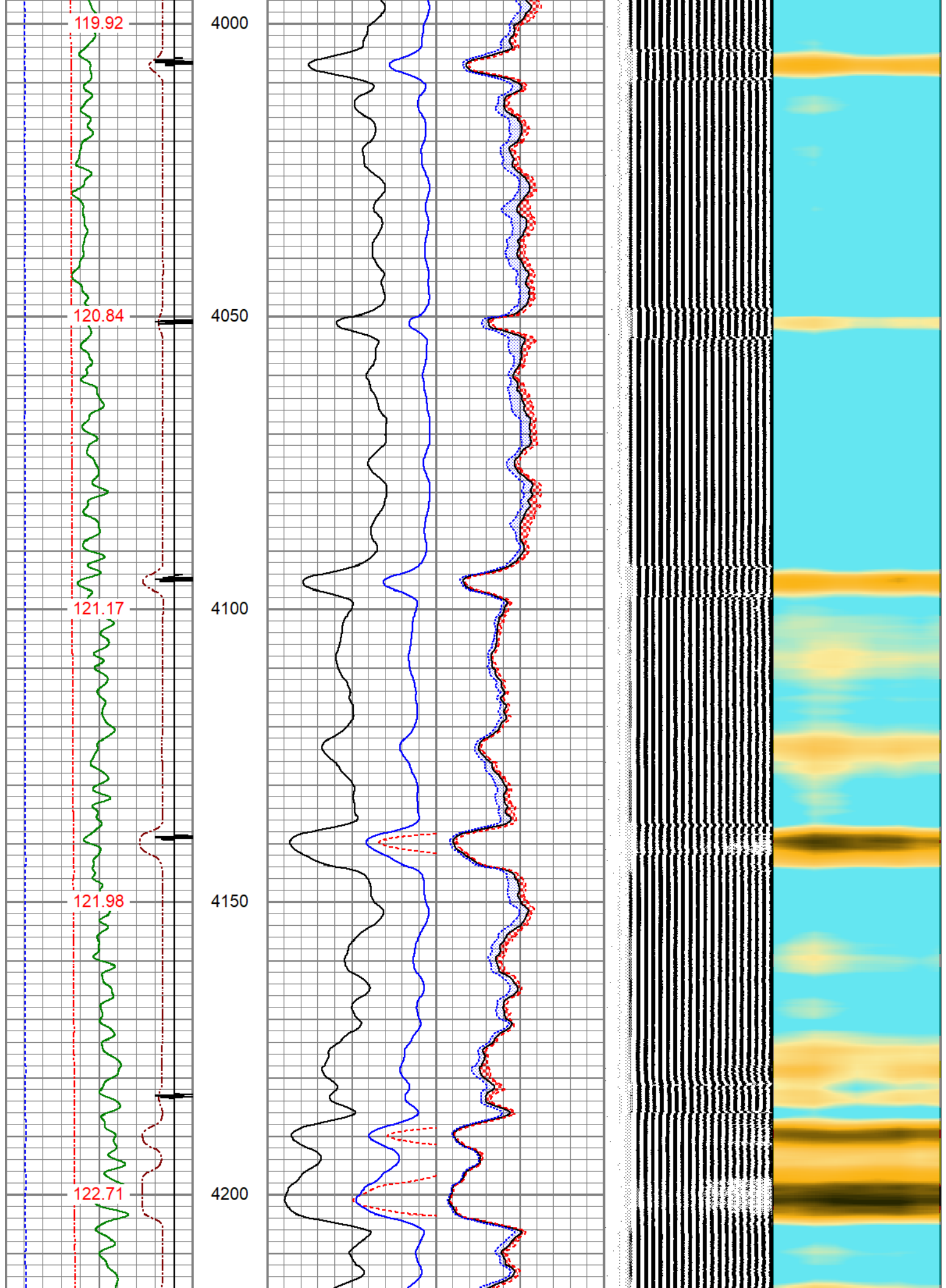
3300

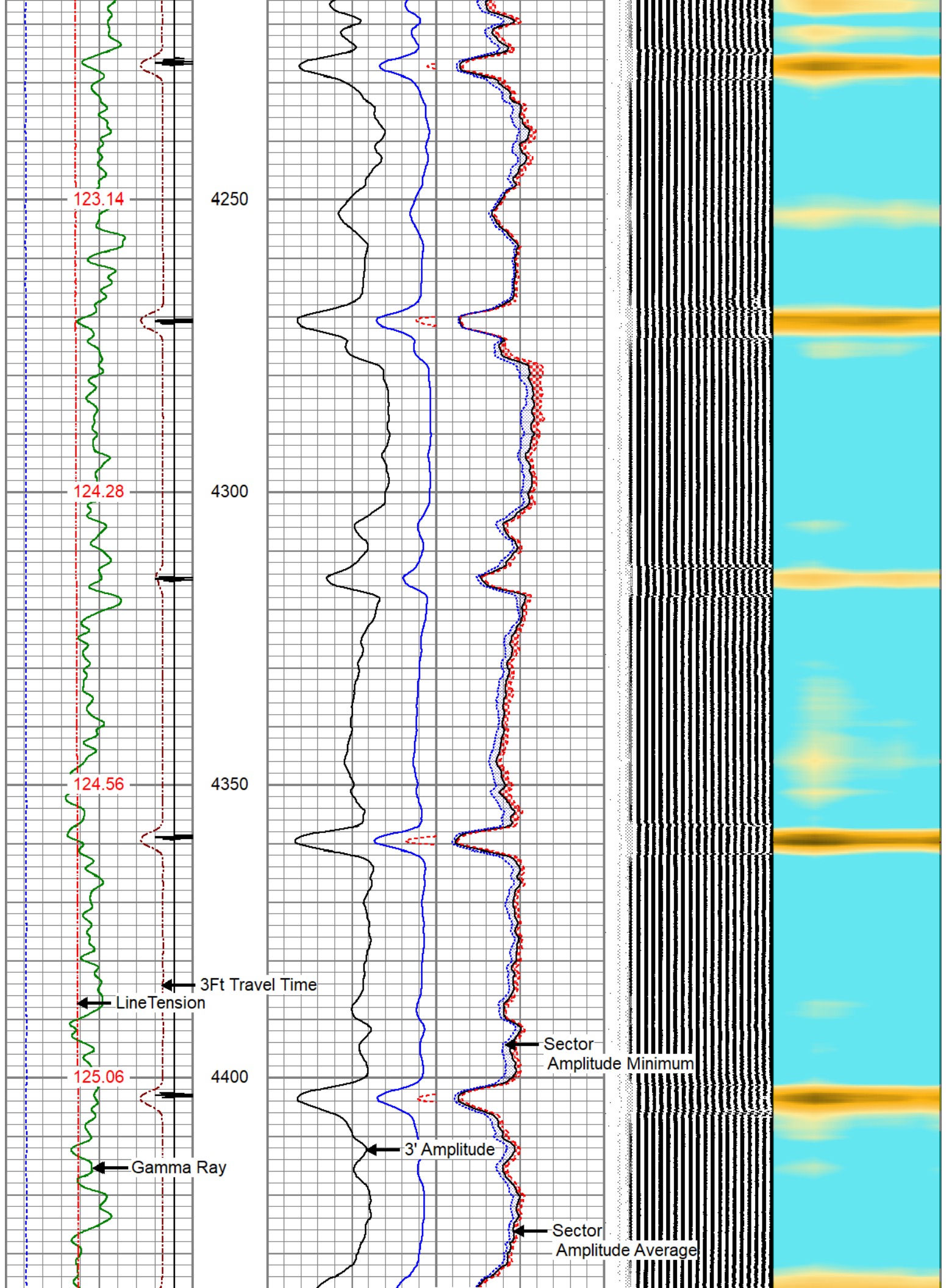




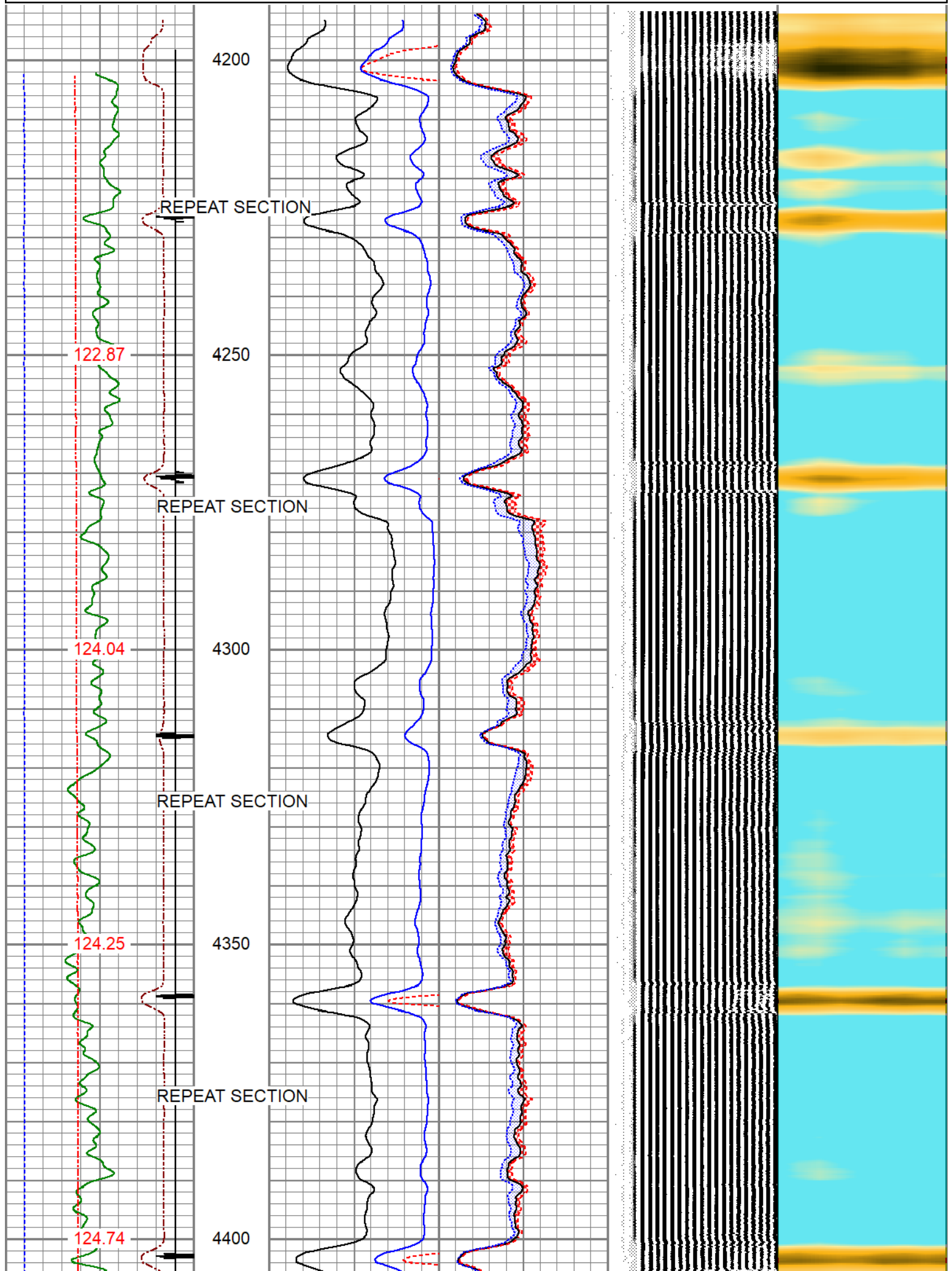


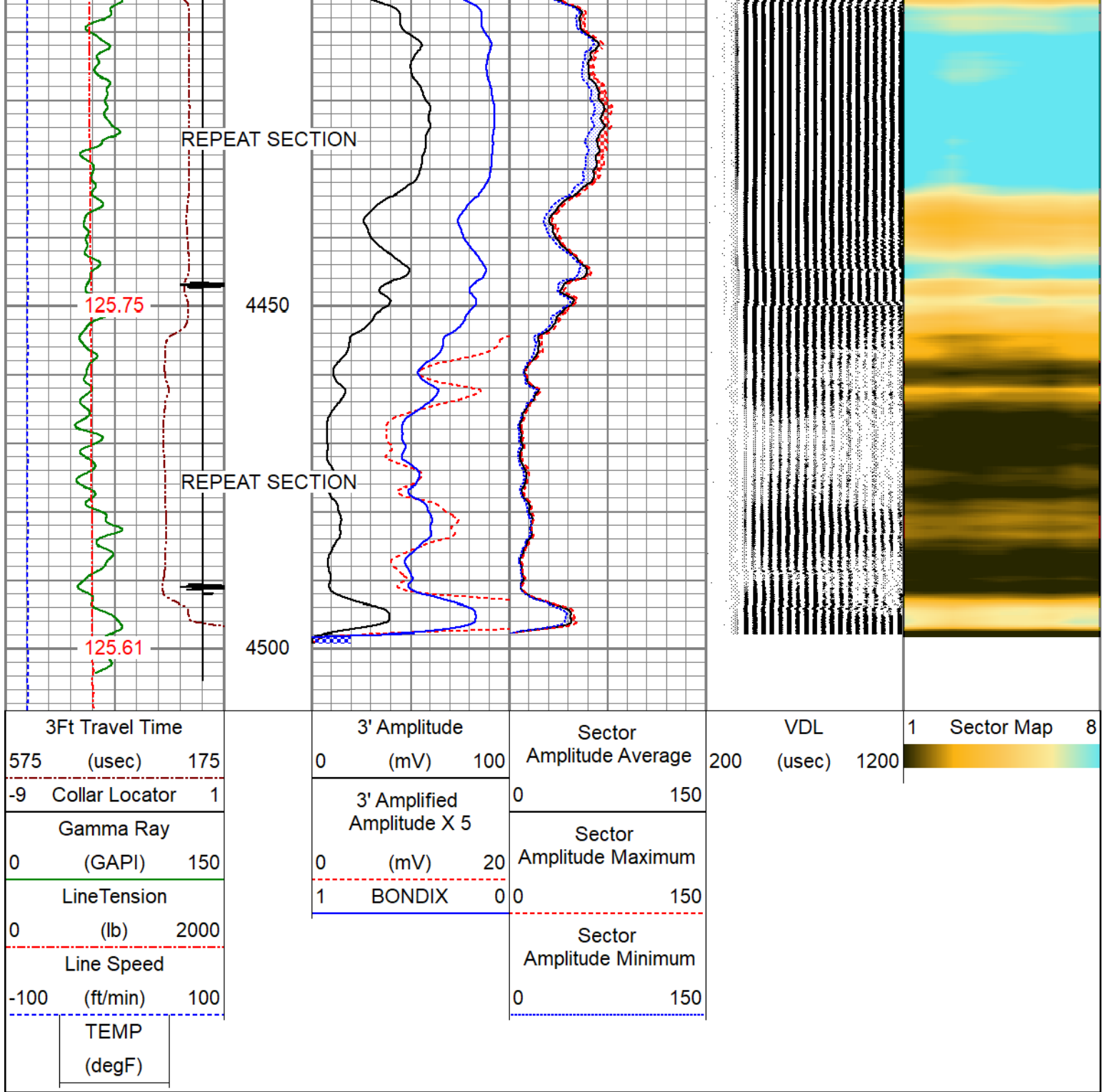






(deg)





Calibration Report

Database File oxy_sawdey 6-30_rcbl_3-8-24.db
 Dataset Pathname pass2
 Dataset Creation Fri Mar 08 15:31:29 2024

Gamma Ray Calibration Report

Serial Number: 140181
 Tool Model: 275 Probe GCT
 Performed: Tue Apr 11 10:14:32 2023

Calibrator Value: 1.0 GAPI

Background Reading: 0.0 cps
 Calibrator Reading: 1.0 cps

Sensitivity:

0.5500

GAPI/cps

Segmented Cement Bond Log Calibration Report

Serial Number: FW1304-34
 Tool Model: RBL-DC
 Calibration Casing Diameter: 4.500 in
 Calibration Depth: 2142.543 ft

Master Calibration, performed Fri Mar 08 15:16:54 2024:

	Raw (v)		Calibrated (mv)		Results	
	Zero	Cal	Zero	Cal	Gain	Offset
3'	0.010	1.382	0.800	81.196	58.598	0.193
CAL	1.533	1.534				
5'	0.034	1.547	0.800	81.196	53.116	-0.984
SUM						
S1	0.006	1.401	0.000	100.000	71.683	-0.461
S2	0.018	1.638	0.000	100.000	61.724	-1.129
S3	0.016	1.703	0.000	100.000	59.298	-0.971
S4	0.016	1.624	0.000	100.000	62.201	-0.992
S5	0.016	1.454	0.000	100.000	69.526	-1.115
S6	0.018	1.376	0.000	100.000	73.627	-1.325
S7	0.017	1.315	0.000	100.000	77.061	-1.328
S8	0.017	1.349	0.000	100.000	75.068	-1.295

Air Zero Calibration, performed Fri Mar 08 15:00:28 2024:

	Raw (v)		Calibrated (v)		Results	
	Zero		Zero		Offset	
3'	0.000		0.000			0.000
5'	0.000		0.000			0.000
SUM						
S1	0.000		0.000			0.000
S2	0.000		0.000			0.000
S3	0.000		0.000			0.000
S4	0.000		0.000			0.000
S5	0.000		0.000			0.000
S6	0.000		0.000			0.000
S7	0.000		0.000			0.000
S8	0.000		0.000			0.000



Company ANADARKO PETROLEUM CORP
 Well SAWDEY 6-30
 Field WATTENBERG
 County WELD
 State CO