



Comp. ANADARKO PETROLEUM CORP
 Well GLADYS SAWDEY 1
 Field WATTENBERG
 Co. WELD
 State CO

Company **ANADARKO PETROLEUM CORP**
 Well **GLADYS SAWDEY 1**
 Field **WATTENBERG**
 County **WELD** State **CO**

Location: **SEC 30 TWP 2N RGE 68W**
 API #: 05-123-12476
 SE/NW
 Other Services
 PERFORMED
 Permanent Datum **GL** Elevation **4990'**
 Log Measured From **KB** **10'** Above Perm. Datum
 Drilling Measured From **KB**
 Elevation
 K.B. 5000'
 D.F. 4999'
 G.L. 4990'

Date of Service	MAR 1ST, 2024
Run Number	ONE
Depth Driller or P8TD	8200'
Depth Logger	3003'
Bottom Log Interval	3000'
Top Log Interval	SURFACE
Open Hole Size	7.875"
Type Fluid	WATER
Fluid Level	SURFACE
Fluid Density	8.3#
Max. Recorded Temperature	92° F
Max. Wellhead Pressure	ZERO
Wellhead Connection	7 1/16" 5K
Estimated Cement Top	SEE LOG
Unit Number	5074
Wireline Size	9/32"
Location	PLATTEVILLE, CO
Recorded By	GREG JACKSON
Witnessed By	VICTOR IDELFONSO

Size	WV/Ft	Top	Bottom
Tubing Record			
Surface Casing	8-5/8	24#	712'
Production Casing	5-1/2	17#	8197'
Liner Record			

<<< Fold Here >>>

All interpretations are opinions based on inferences from electrical or other measurements and Pioneer Wireline Services, LLC cannot and does not guarantee the accuracy or correctness of any interpretation, and Pioneer Wireline Services, LLC will not be liable or responsible for any loss, costs, damages, or expenses incurred or sustained by anyone resulting from any interpretation made by any of our officers, agents or employees.

Comments

N/A DENOTES NOT AVAILABLE OR NON-APPLICABLE.
LOG CORRELATED TO RCBL DATED NOV 13TH, 2015

THANK YOU FOR USING PIONEER ENERGY SERVICES!

Your Pioneer Energy Services Crew Engineer: G. JACKSON Operator: M. LLAMAS Operator: S. PEREZ Operator:	Tool Data - Services BOND GAMMA RAY/CCL	Serial Number
---	---	---------------

Sensor	Offset (ft)	Schematic	Description	Length (ft)	O.D. (in)	Weight (lb)
			Cable Head-Titan_144 1 7/16" Titan Cable Head	1.03	1.44	2.00
			Centralizer-275 Probe 2 3/4" Probe Adjustable Spring Centralizer	2.88	2.75	15.00
WVFS8	12.09		PROBE-RBT-DIGITAL-RBL-DC (FW1304-34) Probe 2 3/4" Radii Bond-Corrosion Package	8.75	2.75	100.00
WVFS7	12.09					
WVFS6	12.09					
WVFS5	12.09					
WVFS4	12.09					
WVFS3	12.09					
WVFS2	12.09					
WVFS1	12.09					
WVFCAL	12.09					
WVF3FT	12.09					
WVF5FT	11.09					
HEADVOLT	7.90					
			Centralizer-275 Probe 2 3/4" Probe Adjustable Spring Centralizer	2.88	2.75	15.00
CCL	4.20					
GCT_TEMP	3.41					
GR	2.83		PROBE-GR/CCL-DIGITAL-275 Probe GCT (140181) Probe 2 3/4" Gamma Ray/Temp/CCL	4.69	2.75	60.00
			Bullnose-PROBE Probe Go Pin Pressure Cap	0.33	1.38	1.00

Dataset: oxy_gladys sawdey 1_rcbl_3-1-24.db: field/well/run1/pass3
 Total length: 20.56 ft
 Total weight: 193.00 lb
 O.D.: 2.75 in

Log Variables

DatabaseC:\ProgramData\Warrior\Data\oxy_gladys sawdey 1_rcbl_3-1-24.db
 Dataset field/well/run1/pass3/_vars_

Top - Bottom

BOREID in 7.875	BOTTEMP degF 100	CASEOD in 5.5	CASETHCK in 0	CASEWGHT lb/ft 17	MAXAMPL mV 71.9	MINAMPL mV 1
MINATTN db/ft 0.08	PERFS No	PPT usec 0	SRFTEMP degF 0	TDEPTH ft 0		

Variable Description

BOREID : Borehole I.D.
 BOTTEMP : Bottom Hole Temperature
 CASEOD : Casing O.D.
 CASETHCK : Casing Thickness
 CASEWGHT : Casing Weight
 MAXAMPL : Maximum Amplitude

MINAMPL : Minimum Amplitude
 MINATTN : Minimum Attenuation
 PERFS : Perforation Flag
 PPT : Predicted Pipe Time
 SRFTEMP : Surface Temperature
 TDEPTH : Total Depth



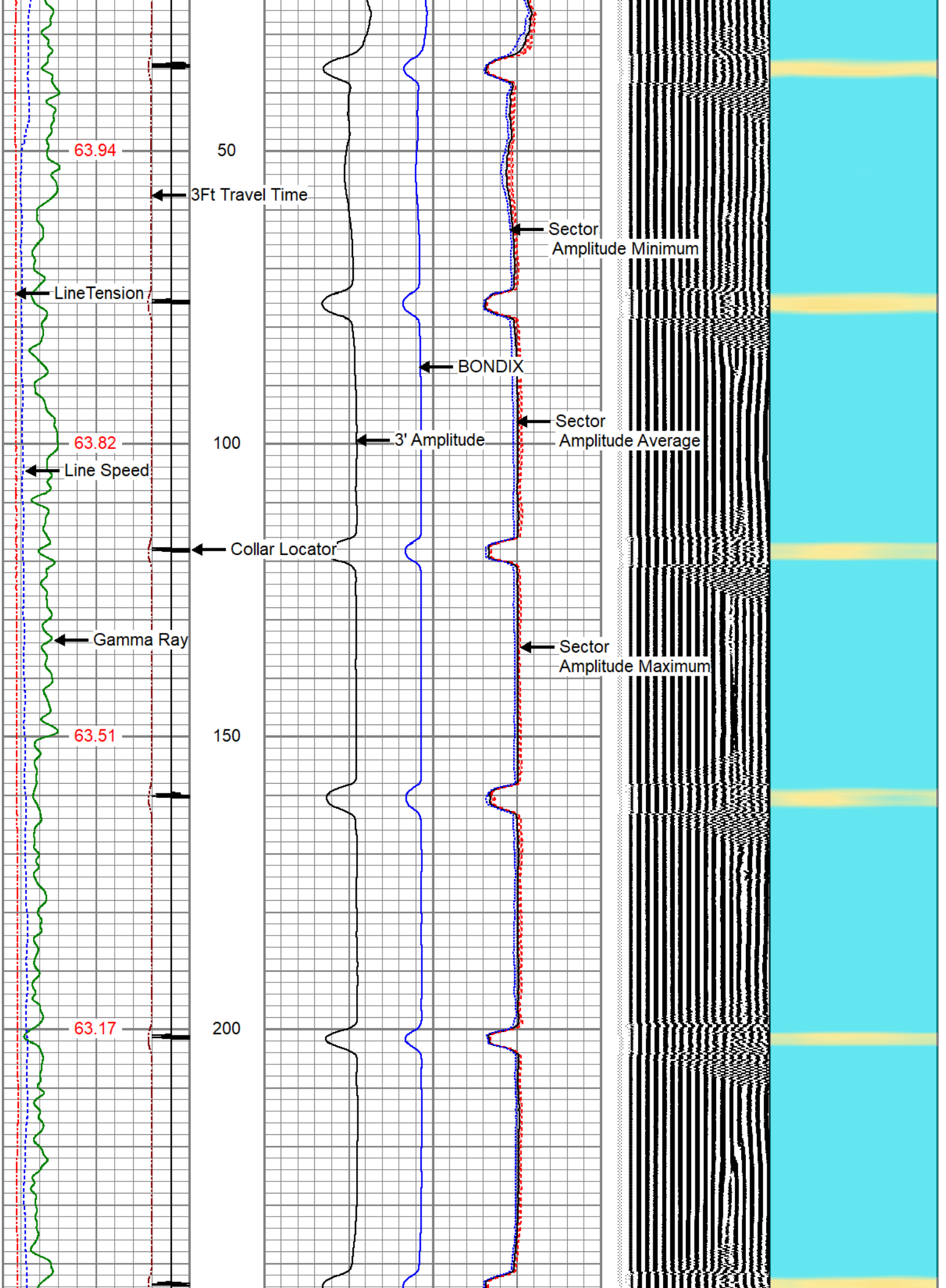
MAIN LOG

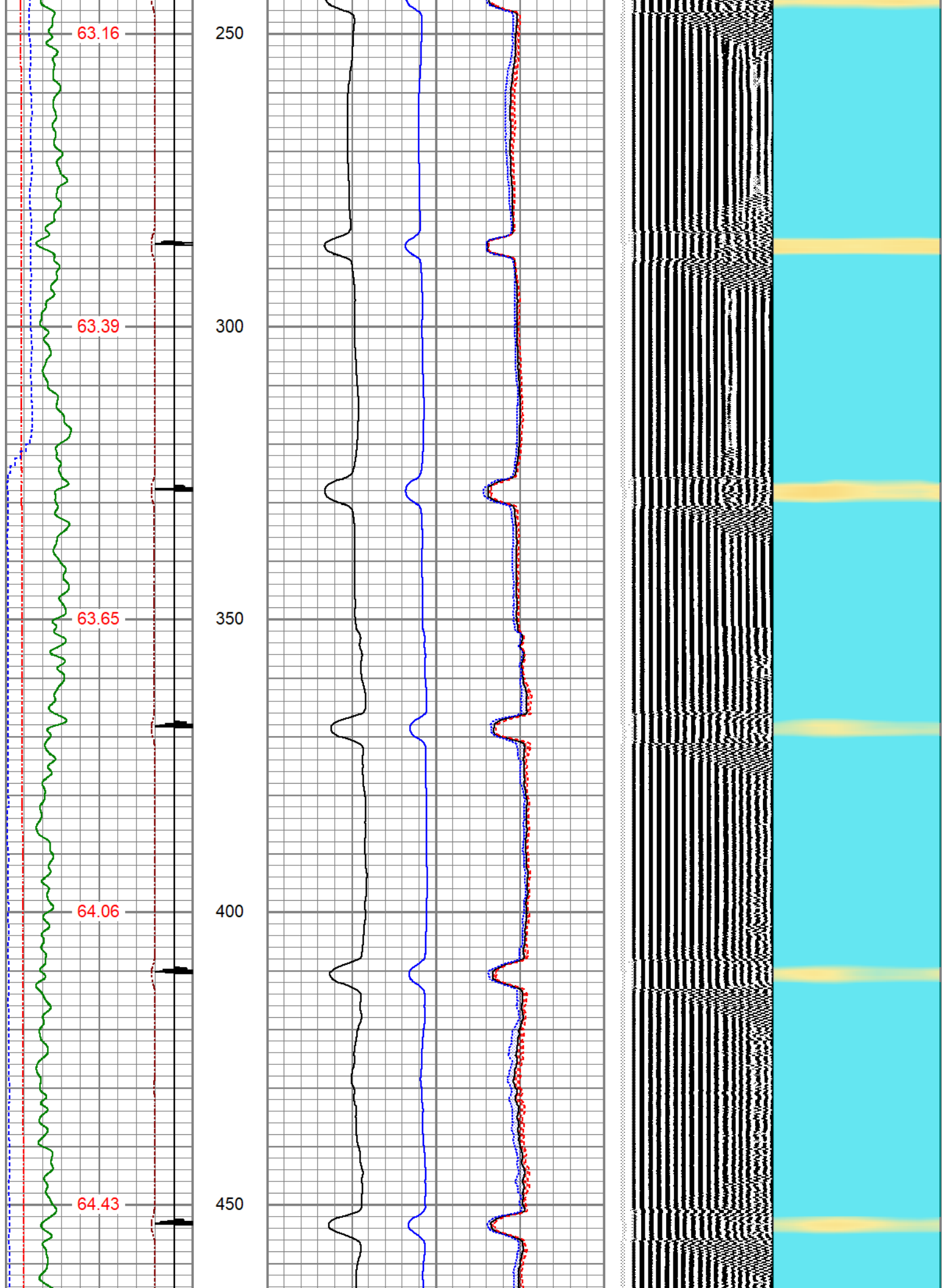
ZERO PSI APPLIED AT SURFACE

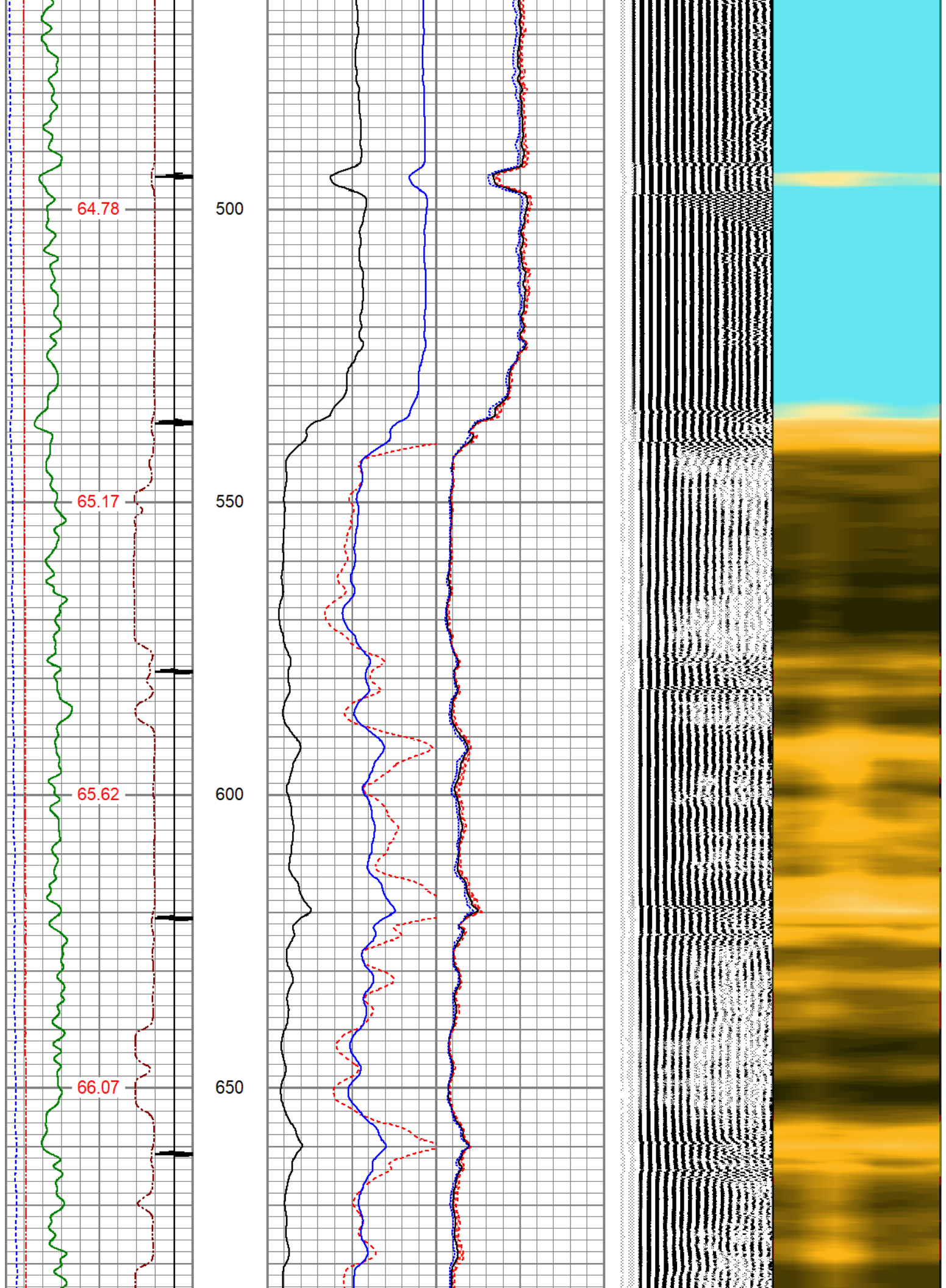
Database File oxy_gladys sawdey 1_rcbl_3-1-24.db
 Dataset Pathname pass3
 Presentation Format pinr_scbl
 Dataset Creation Fri Mar 01 15:46:06 2024
 Charted by Depth in Feet scaled 1:240

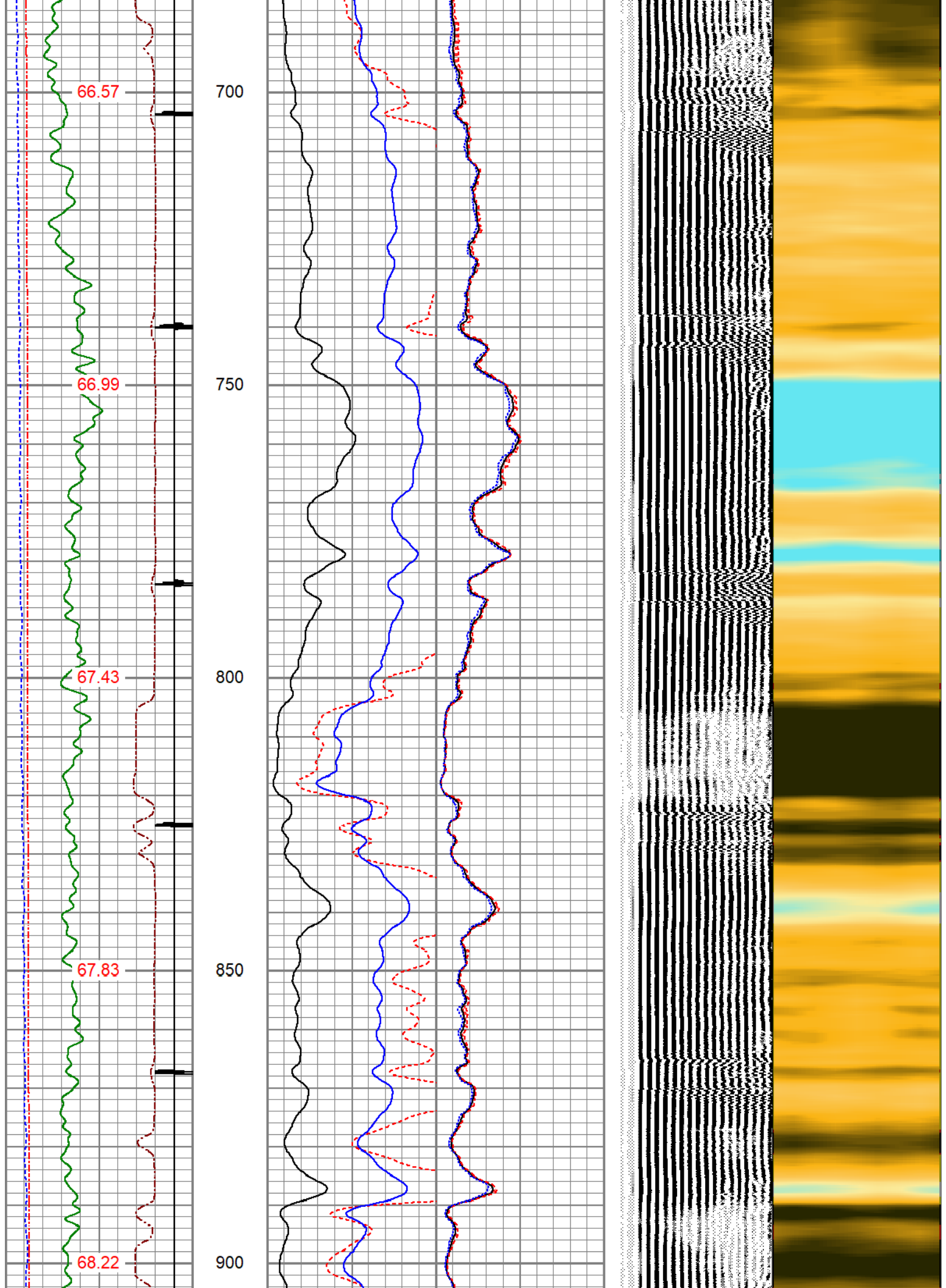
3Ft Travel Time 575 (usec) 175	3' Amplitude 0 (mV) 100	Sector Amplitude Average 0 150	VDL (usec) 1200	1 Sector Map 8
-9 Collar Locator 1	3' Amplified Amplitude X 5 0 (mV) 20	Sector Amplitude Maximum 0 150		
Gamma Ray 0 (GAPI) 150	1 BONDIX 0	Sector Amplitude Minimum 0 150		
LineTension 0 (lb) 2000				
Line Speed -100 (ft/min) 100				
TEMP (degF)				

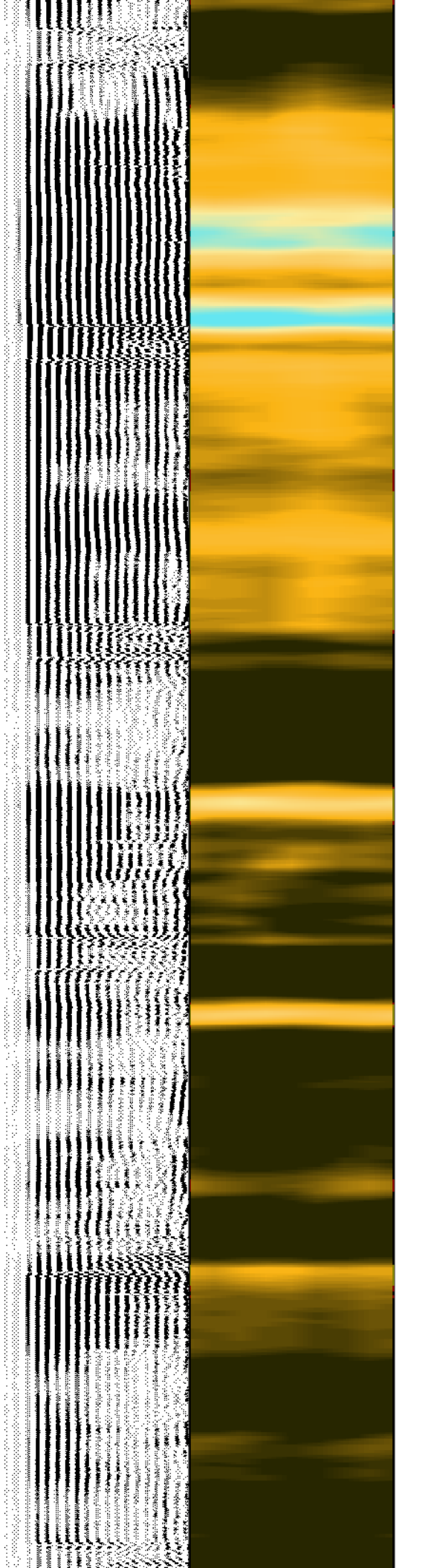
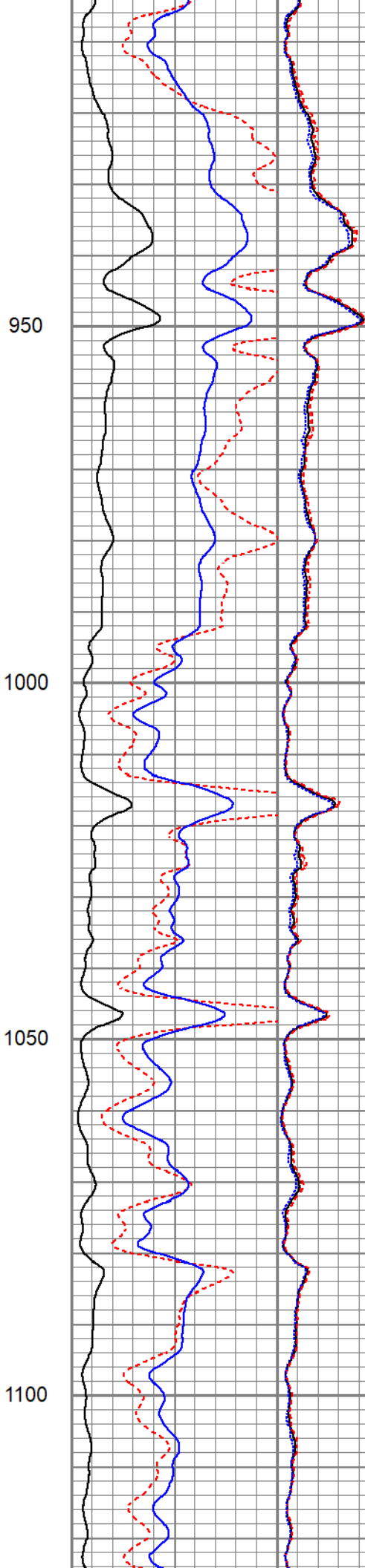
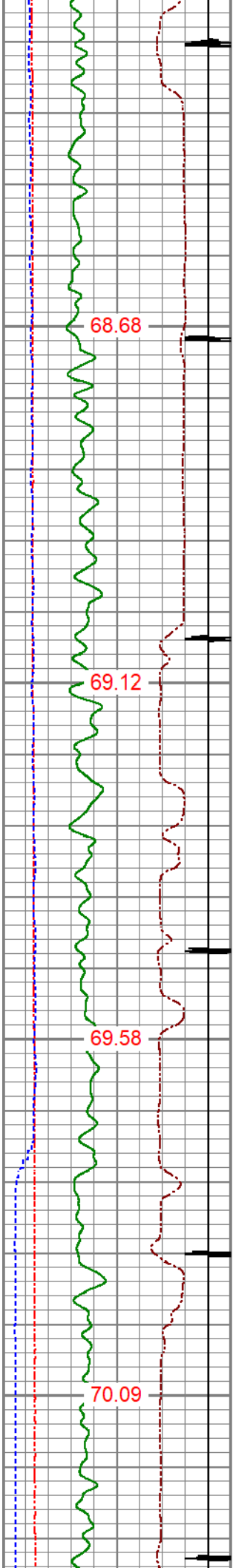


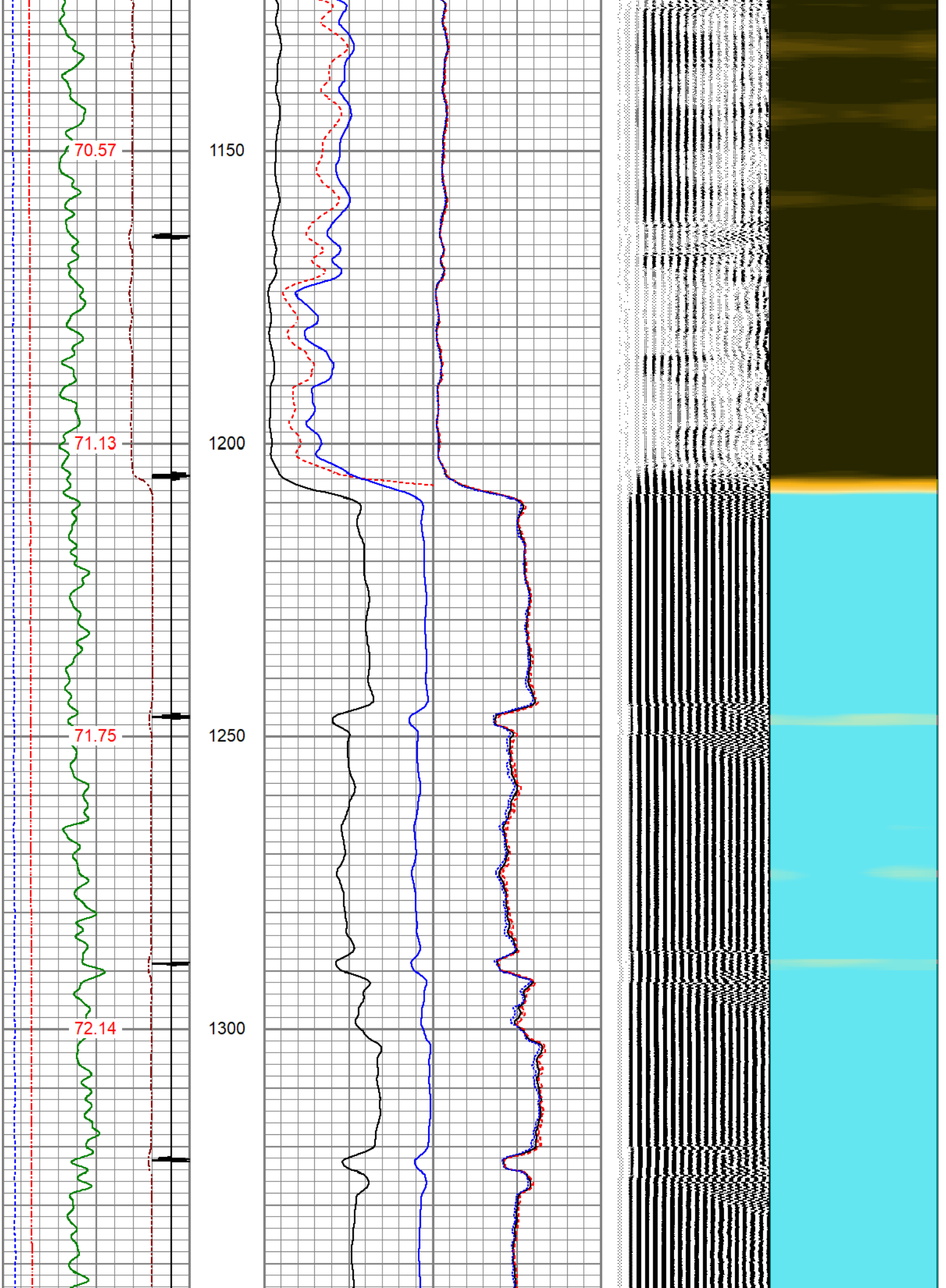


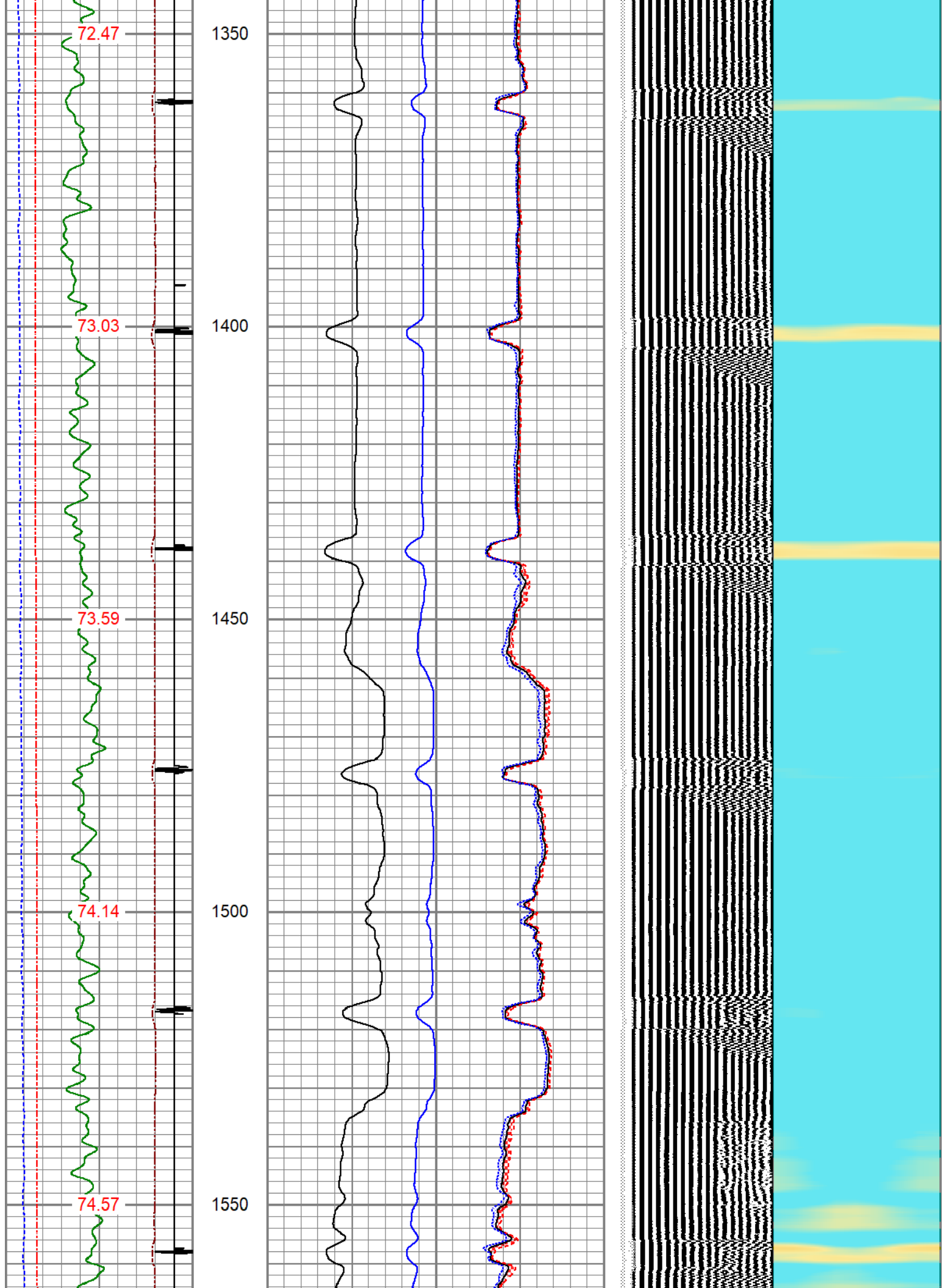


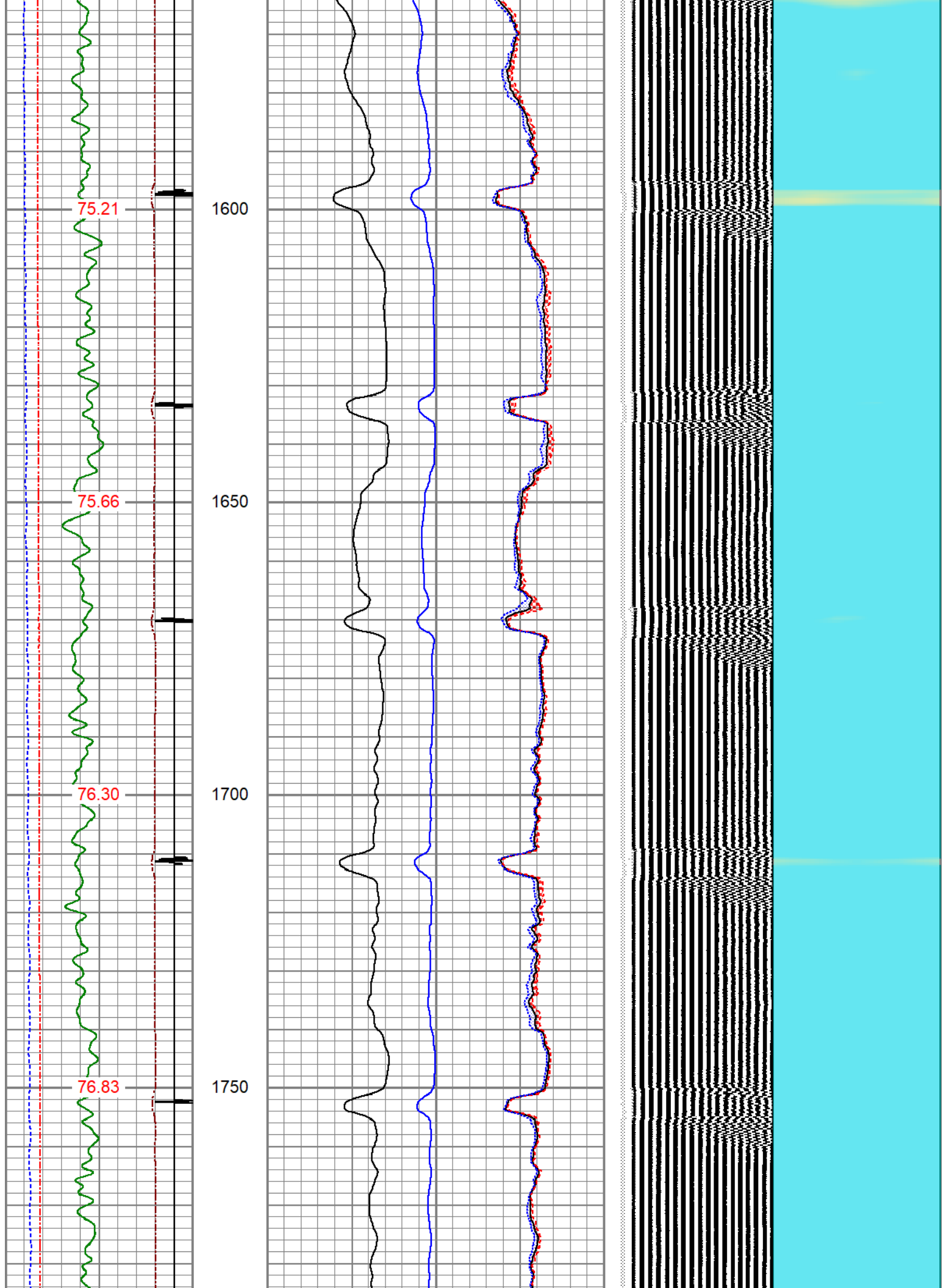


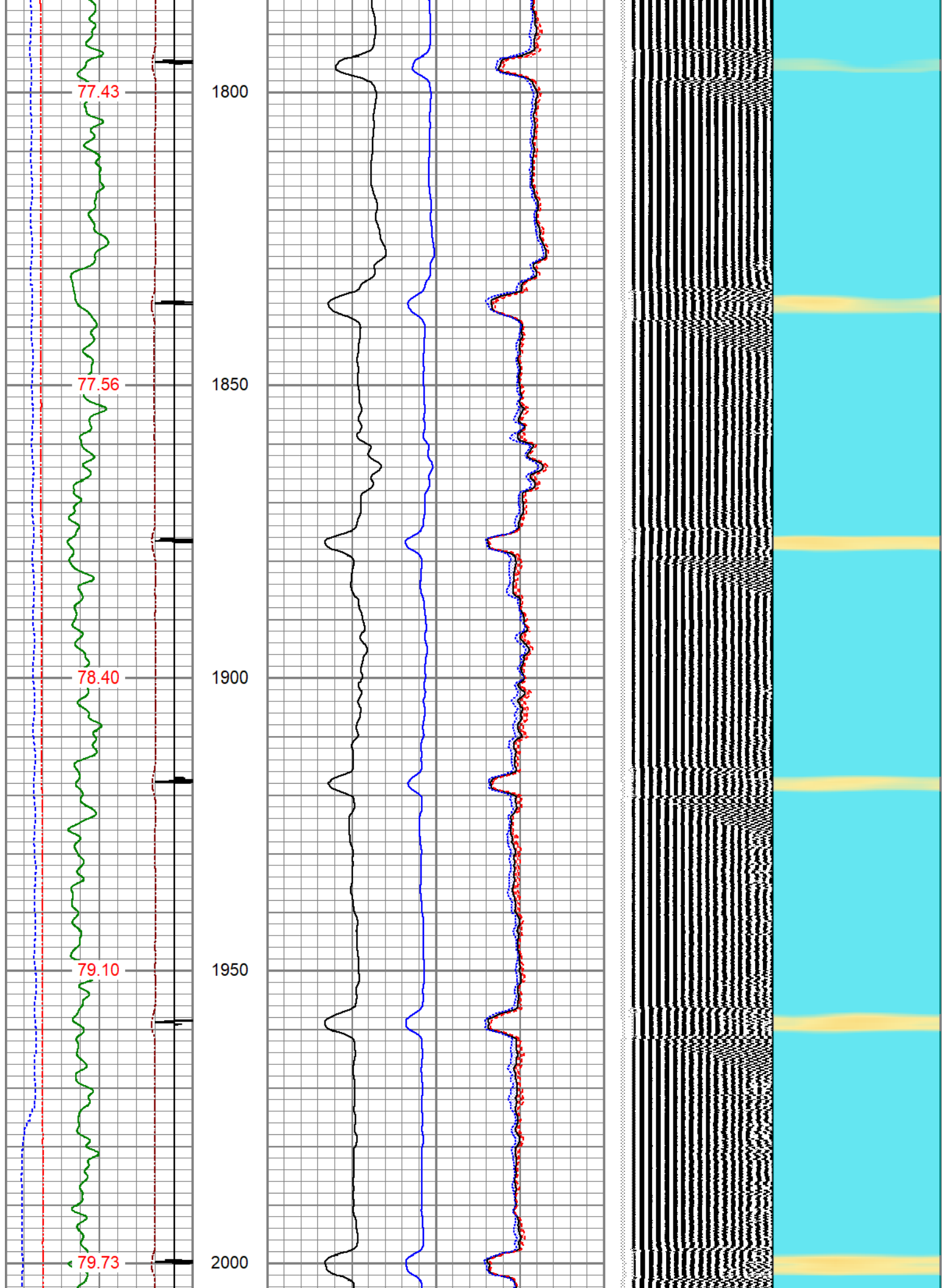


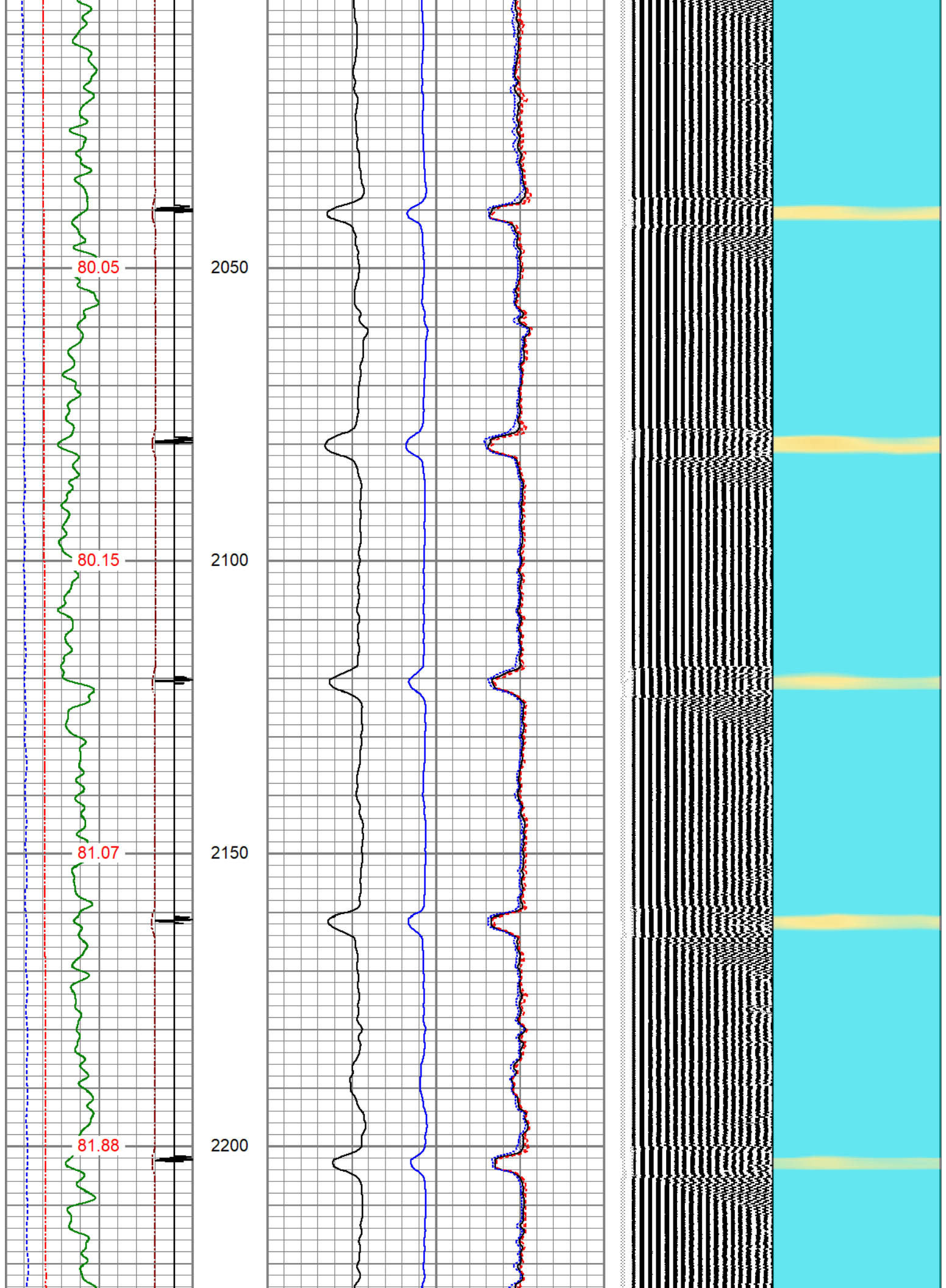


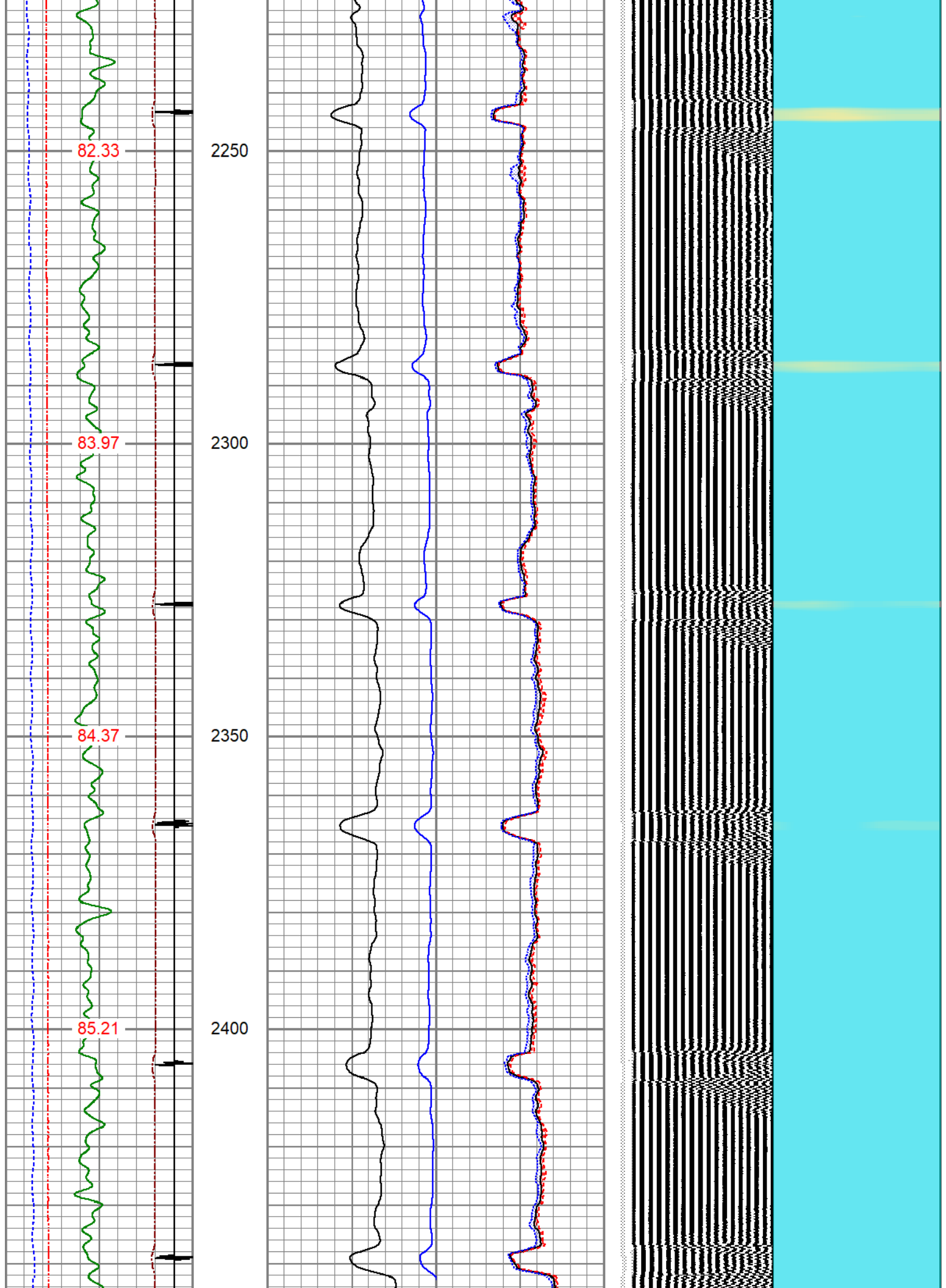


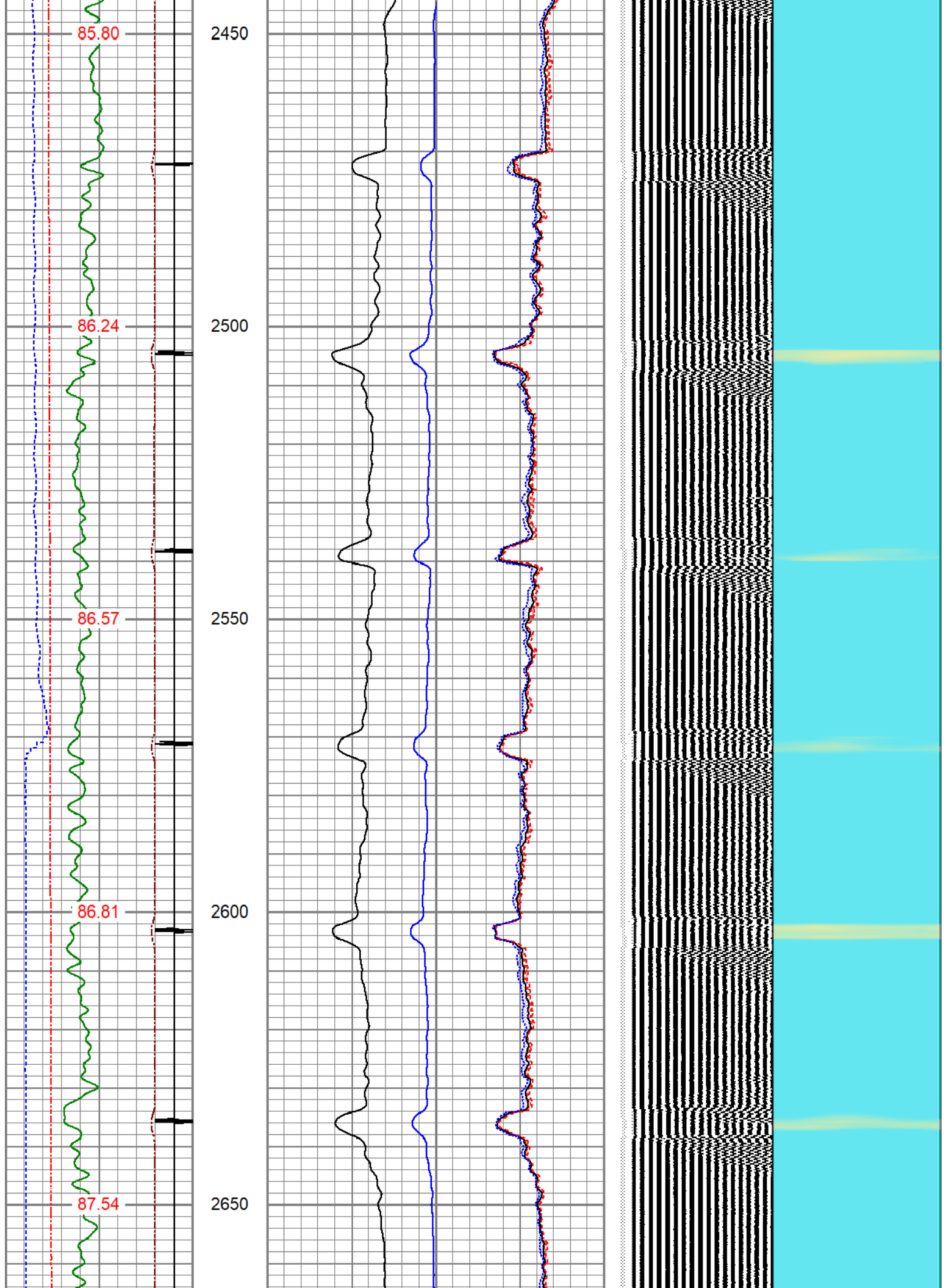


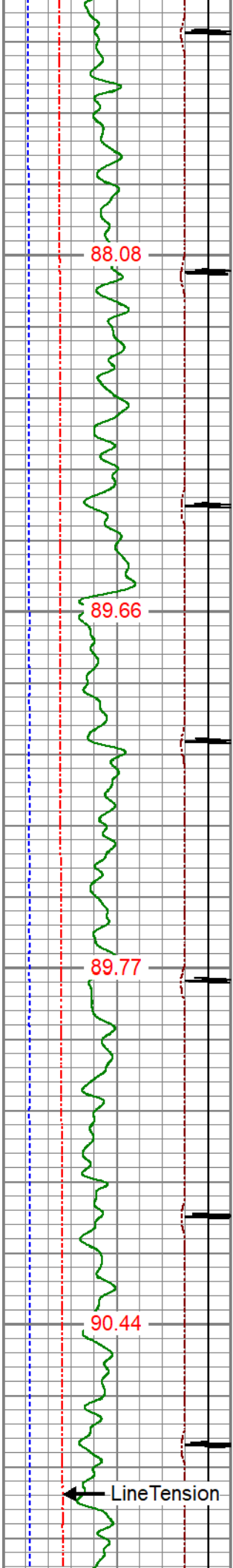










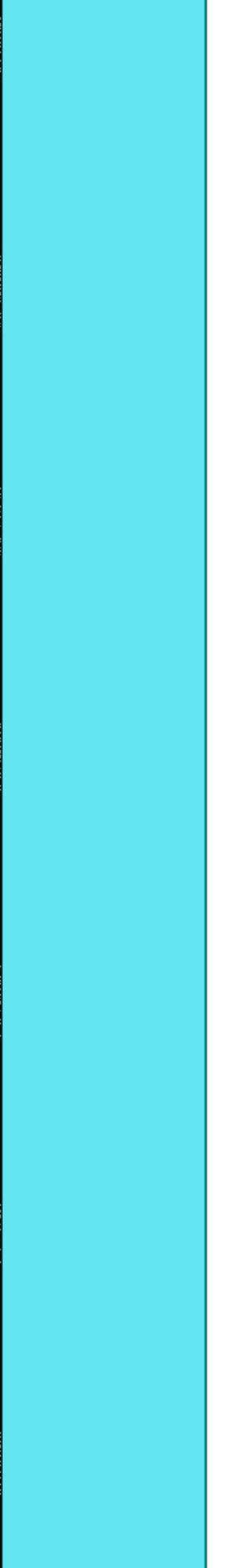
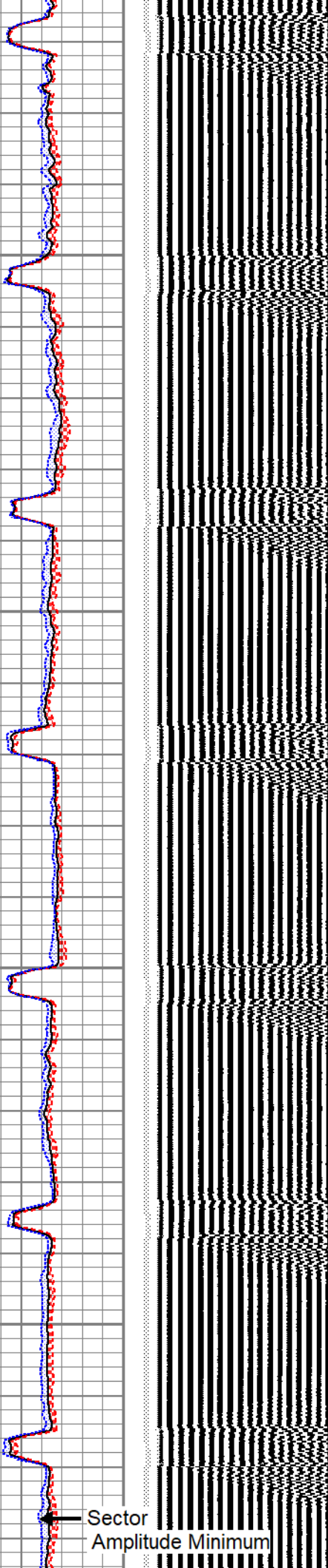
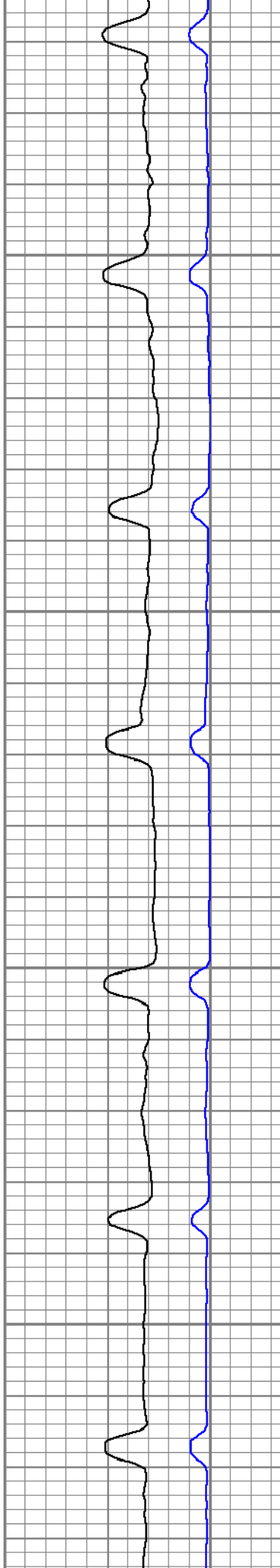


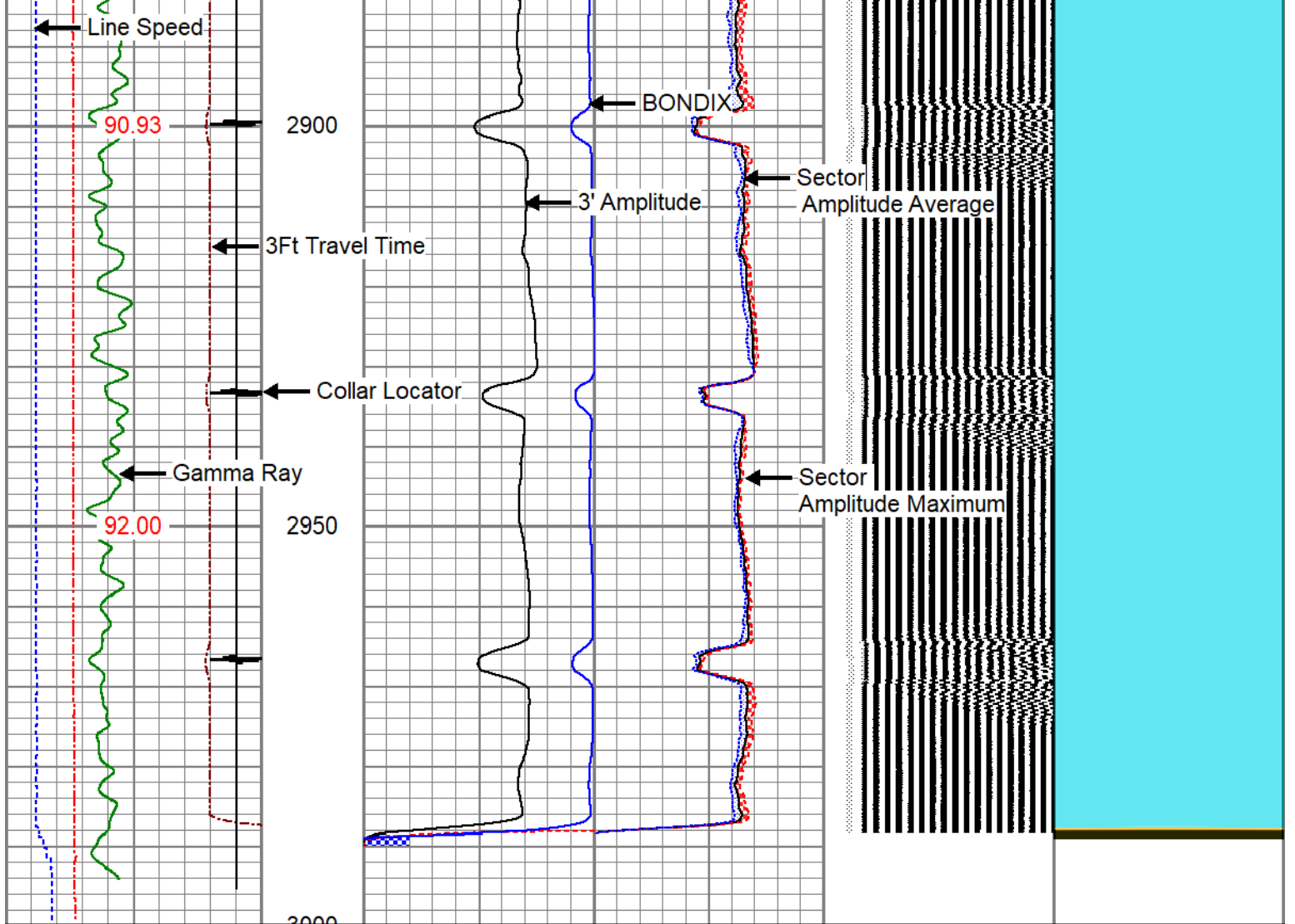
2700

2750

2800

2850





3Ft Travel Time 575 (usec) 175	3' Amplitude 0 (mV) 100	Sector Amplitude Average 0 150	VDL 200 (usec) 1200	1 Sector Map 8
-9 Collar Locator 1	3' Amplified Amplitude X 5 0 (mV) 20	Sector Amplitude Maximum 0 150		
Gamma Ray 0 (GAPI) 150	BONDIX 1 0	Sector Amplitude Minimum 0 150		
LineTension 0 (lb) 2000				
Line Speed -100 (ft/min) 100				
TEMP (degF)				

AXIS ENERGY SERVICES

REPEAT SECTION

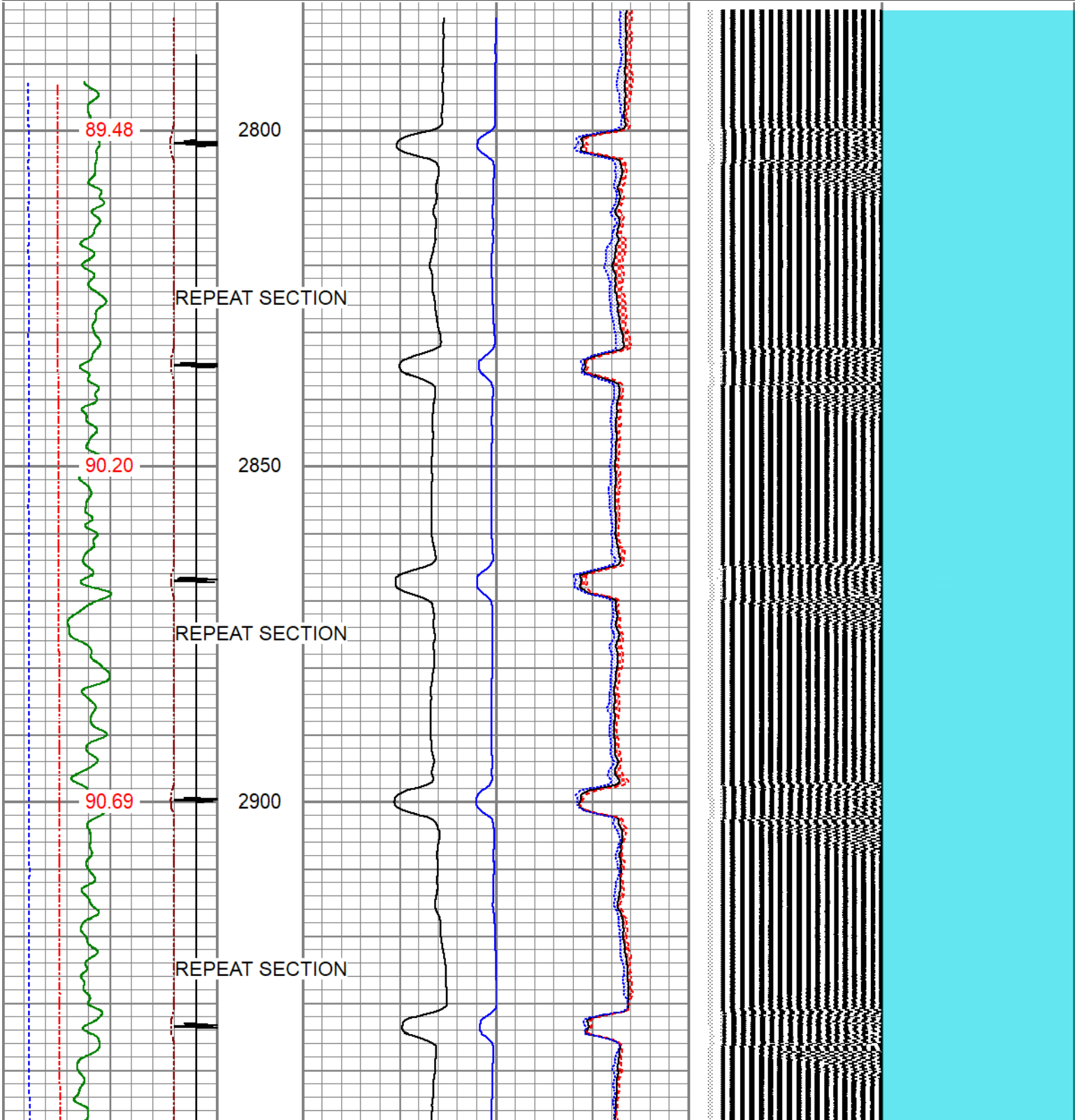
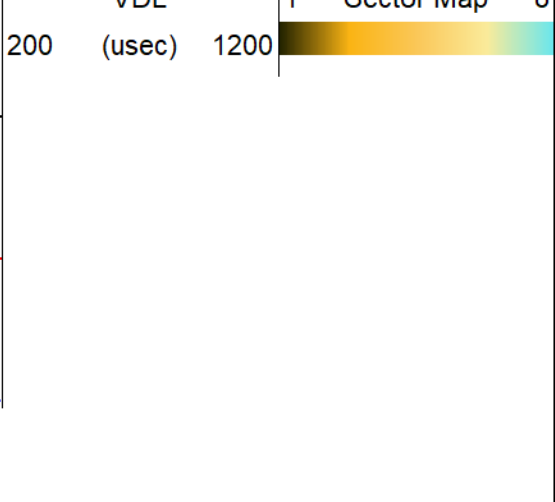
ZERO PSI APPLIED AT SURFACE

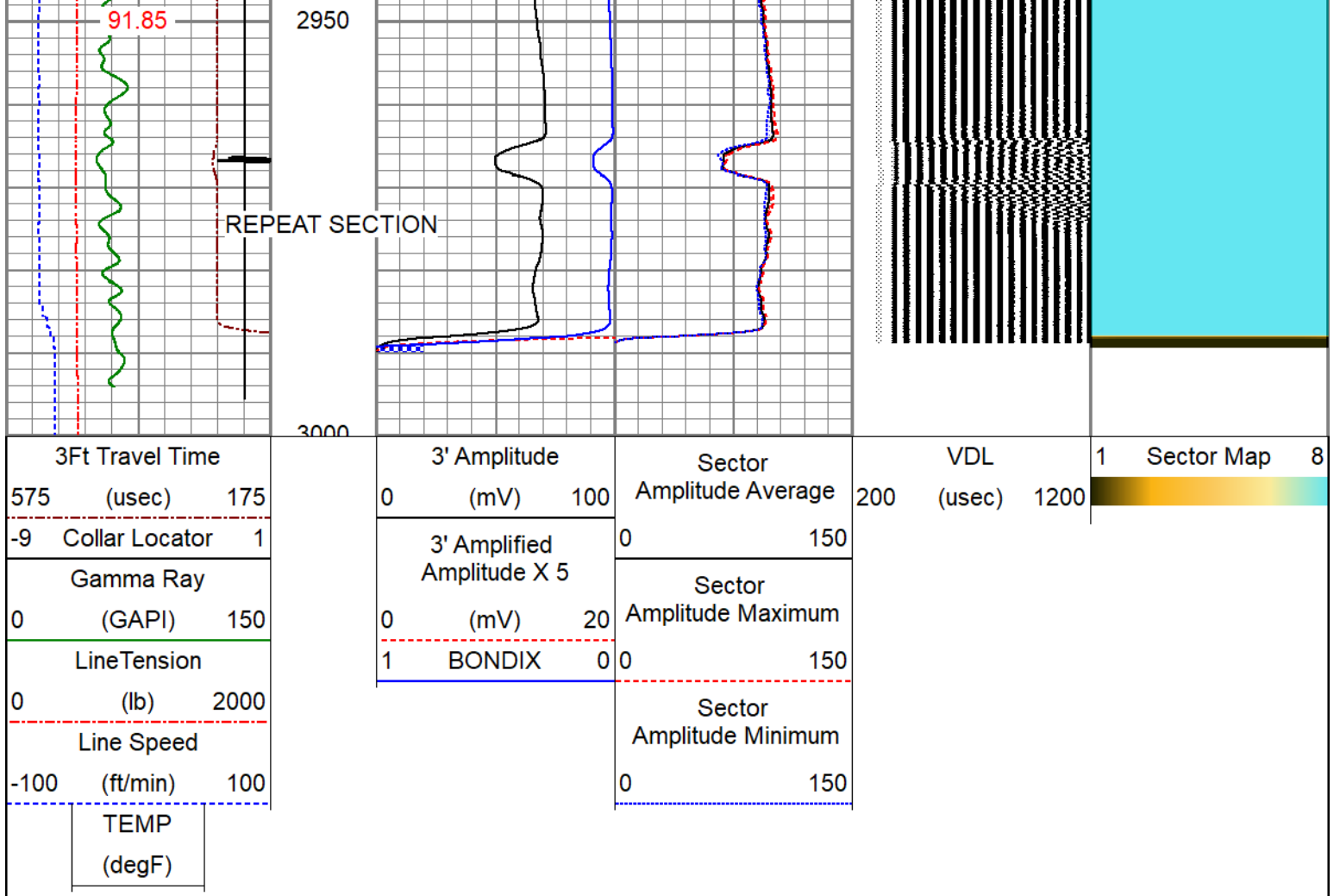
Database File oxy_gladys sawdey 1_rcbl_3-1-24.db
 Dataset Pathname pass2
 Presentation Format pinr_scbl
 Dataset Creation Fri Mar 01 15:41:47 2024
 Charted by Depth in Feet scaled 1:240

3Ft Travel Time		3' Amplitude		VDL	1 Sector Map 8
-----------------	--	--------------	--	-----	----------------

575	(usec)	175
-9	Collar Locator	1
Gamma Ray		
0	(GAPI)	150
LineTension		
0	(lb)	2000
Line Speed		
-100	(ft/min)	100
TEMP		
(degF)		

0	3' Amplitude	100
3' Amplitude X 5		
0	(mV)	20
1	BONDIX	0
Sector Amplitude Average		
0		150
Sector Amplitude Maximum		
0		150
Sector Amplitude Minimum		
0		150





Calibration Report	
Database File	oxy_gladys sawdey 1_rcbl_3-1-24.db
Dataset Pathname	pass3
Dataset Creation	Fri Mar 01 15:46:06 2024

Gamma Ray Calibration Report		
Serial Number:	140181	
Tool Model:	275 Probe GCT	
Performed:	Tue Apr 11 10:14:32 2023	
Calibrator Value:	1.0	GAPI
Background Reading:	0.0	cps
Calibrator Reading:	1.0	cps
Sensitivity:	0.5500	GAPI/cps

Segmented Cement Bond Log Calibration Report		
Serial Number:	FW1304-34	
Tool Model:	RBL-DC	
Calibration Casing Diameter:	5.500	in
Calibration Depth:	2736.808	ft

Master Calibration, performed Fri Mar 01 15:40:13 2024:

Raw (v)	Calibrated (mv)	Results
---------	-----------------	---------

	Zero	Cal	Zero	Cal	Gain	Offset
3'	0.019	1.678	0.800	71.921	42.861	-0.015
CAL	1.537	1.504				
5'	0.024	1.716	0.800	71.921	42.040	-0.208
SUM						
S1	0.004	1.606	0.000	100.000	62.419	-0.257
S2	0.016	1.751	0.000	100.000	57.618	-0.900
S3	0.015	1.782	0.000	100.000	56.587	-0.856
S4	0.015	1.854	0.000	100.000	54.368	-0.816
S5	0.015	1.775	0.000	100.000	56.817	-0.845
S6	0.016	1.677	0.000	100.000	60.198	-0.958
S7	0.014	1.547	0.000	100.000	65.235	-0.936
S8	0.016	1.572	0.000	100.000	64.235	-0.997

Air Zero Calibration, performed Fri Mar 01 14:57:57 2024:

	Raw (v)		Calibrated (v)		Results
	Zero		Zero		Offset
3'	0.000		0.000		0.000
5'	0.000		0.000		0.000
SUM					
S1	0.000		0.000		0.000
S2	0.000		0.000		0.000
S3	0.000		0.000		0.000
S4	0.000		0.000		0.000
S5	0.000		0.000		0.000
S6	0.000		0.000		0.000
S7	0.000		0.000		0.000
S8	0.000		0.000		0.000



Company ANADARKO PETROLEUM CORP
 Well GLADYS SAWDEY 1
 Field WATTENBERG
 County WELD
 State CO