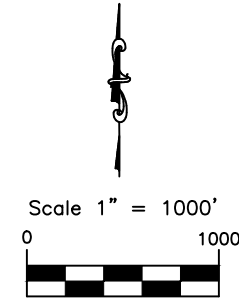


Farnsworth GROUP

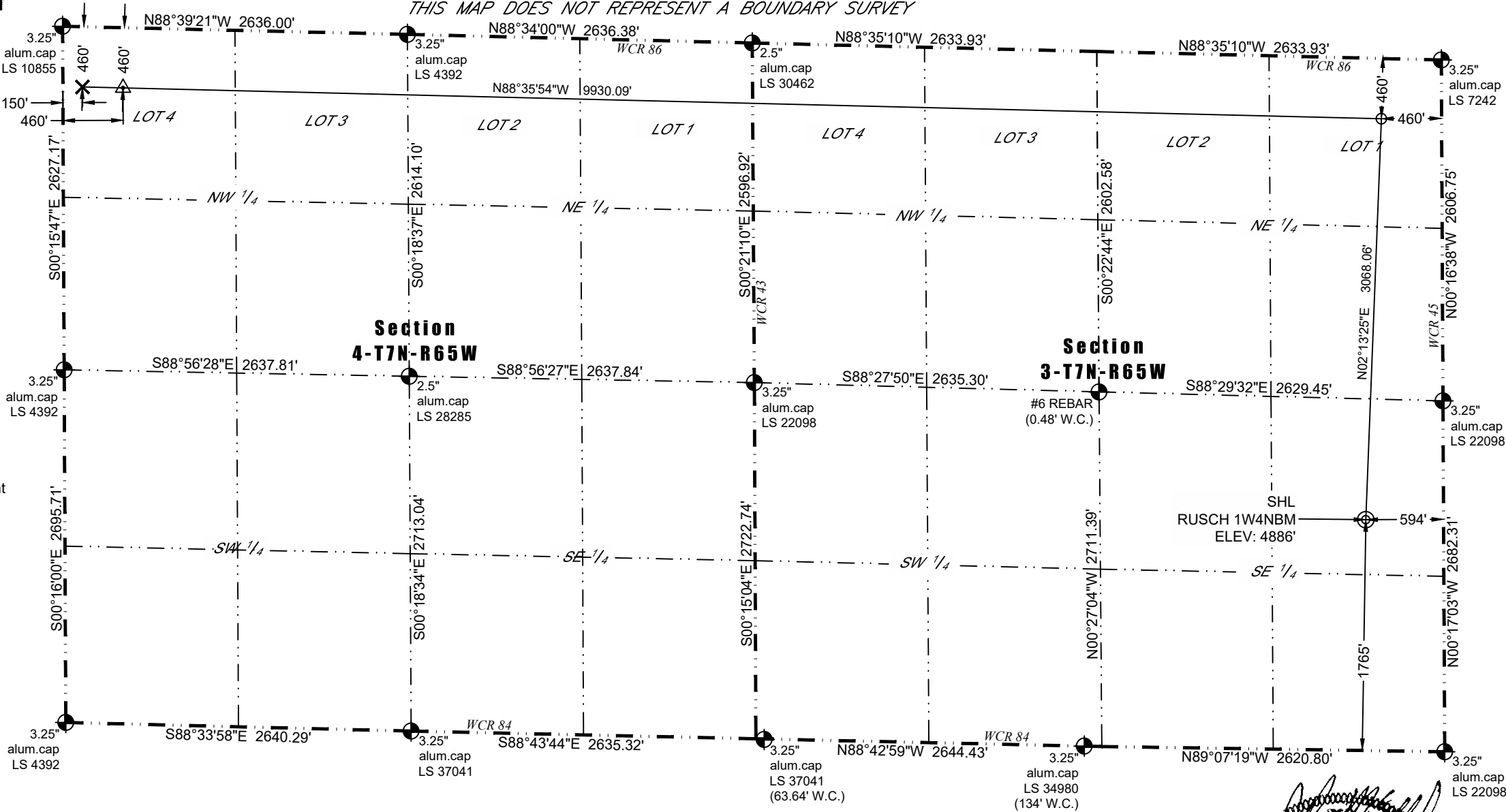
223 WILLOW STREET  
FORT COLLINS, COLORADO 80524  
(970) 484-7477 / info@f-w.com

WELL LOCATION CERTIFICATE

THIS MAP DOES NOT REPRESENT A BOUNDARY SURVEY



- LEGEND
- Found Survey Monument
  - Calculated Position
  - SHL
  - TPZ
  - BPZ
  - BHL



- Notes:
- Bearings and distances based on NAD 83 Colorado North State Plane Coordinate. using RTK GPS observations taken 11/7/2017 by operator Jason Dahlman.
  - Conversion factor to ground (1.0002549504).
  - Elevations based on NAVD 88 GPS heights and Geoid 2009 corrections.
  - See Location Drawing for visible improvements within 500 feet of Pad Site.
  - The surface use is a cultivated field.

NOTICE: According to Colorado law you must commence any legal action based upon any defect in this W.L.C. within three years after you first discover such defect. In no event may any action based upon any defect in this W.L.C. be commenced more than ten years from this said date of the certification shown hereon.

In accordance with a request from Kit Tinchler of Nickel Road Operating LLC, Farnsworth Group Inc. has determined the location of the **RUSCH 1W4NBM** well site to be SHL: 1765' FSL and 594' FEL, (TPZ: 460' FNL and 460' FEL), (BPZ: 460' FNL and 460' FWL), (BHL: 460' FNL and 150' FWL), as measured at ninety (90) degrees from the section lines of Sections 3 and 4, Township 7 North, Range 65 West of the 6th Principal Meridian, Weld County Colorado.

SHL Data:	TPZ Data:	BPZ Data:	BHL Data:
Latitude: N 40.600383°	Latitude: N 40.608795°	Latitude: N 40.609691°	Latitude: N 40.609720°
Longitude: W 104.641461°	Longitude: W 104.640926°	Longitude: W 104.675553°	Longitude: W 104.640926°
PDOP: 1.4			

I hereby certify that this Well Location Certificate was prepared by me or under my direct supervision on 11/20/2017 and on behalf of Farnsworth Group Inc. Nickel Road Operating LLC. This is not a Land Survey or an Improvement Survey Plat and that it is not to be relied upon for establishment of fences, buildings, or other future improvement lines.

PROFESSIONAL LAND SURVEYOR  
John Robert Farnsworth  
11-20219