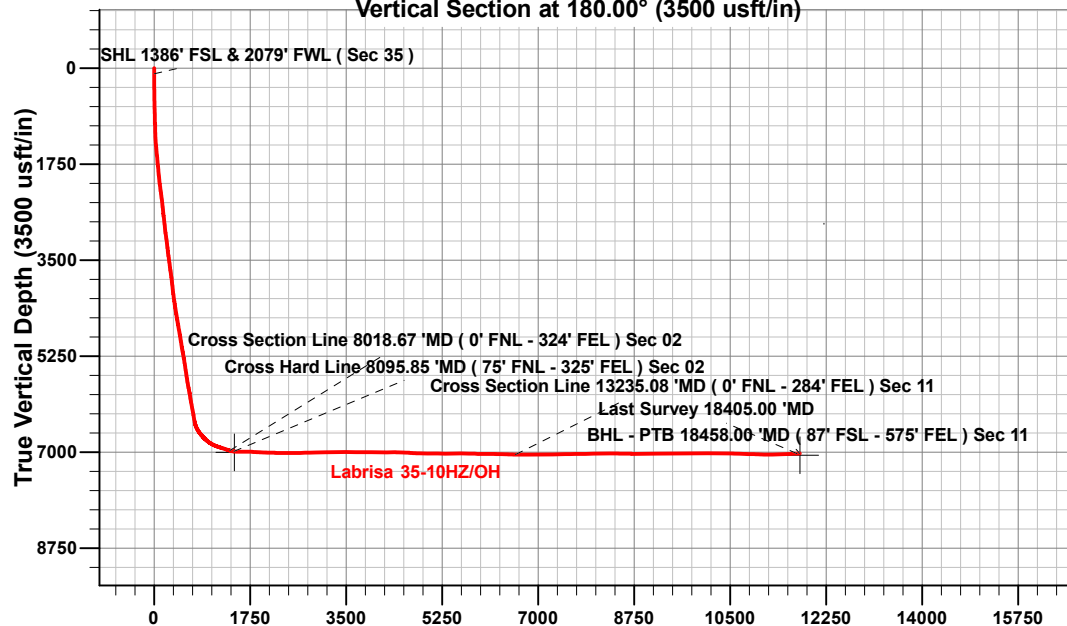


Vertical Section at 180.00° (3500 usft/in)



ANNOTATIONS

MD	Inc	Azi	TVD	+N/-S	+E/-W	VSECT	Departure	Annotation
100.00	0.23	108.07	100.00	-0.09	0.24	0.09	0.25	SHL 1386' FSL & 2079' FWL (Sec 35)
8018.67	74.44	183.56	6969.70	-1377.06	2892.50	1377.06	3504.16	Cross Section Line 8018.67 'MD (0' FNL - 324' FEL) Sec 02
8095.85	81.48	180.12	6986.49	-1452.30	2890.40	1452.30	3579.44	Cross Hard Line 8095.85 'MD (75' FNL - 325' FEL) Sec 02
13235.08	89.13	182.28	7044.00	-6585.84	2888.26	6585.84	8716.47	Cross Section Line 13235.08 'MD (0' FNL - 284' FEL) Sec 11
18405.00	91.32	198.65	7026.09	-11720.70	2634.82	11720.70	13884.82	Last Survey 18405.00 'MD
18458.00	91.32	198.65	7024.87	-11770.90	2617.88	11770.90	13937.81	BHL - PTB 18458.00 'MD (87' FSL - 575' FEL) Sec 11

Project: Weld County, CO (UTM-NAD83)
 Site: 2N-65W-35 (Labrisa Pad)
 Well: Labrisa 35-10HZ
 Wellbore: OH
 Design: OH

FORMATION TOP DETAILS

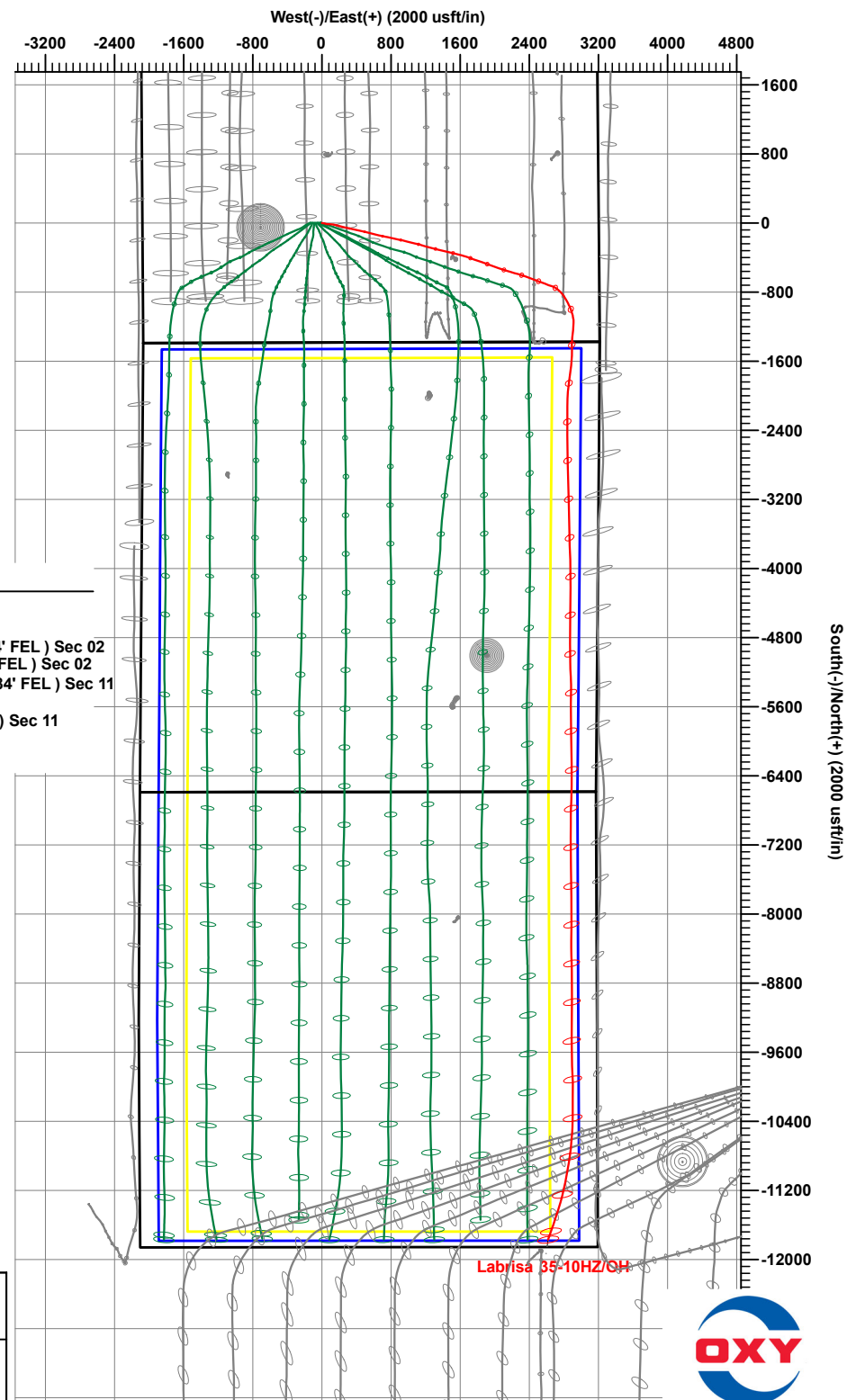
CASING DETAILS

TVD	MD	Name	Size
2036.00	2112.33	9 5/8"	9-5/8
7055.96	18467.09	Prod Csg	5-1/2

TVDPath	MDPath	Formation
1488.00	1513.02	Fox Hills
4103.00	4446.06	Parkman
4453.00	4841.24	Sussex
6896.00	7704.77	Sharon Springs
6921.00	7758.81	Niobrara
7030.00	13523.37	Nio B

DESIGN TARGET DETAILS

Name	TVD	+N/-S	+E/-W	Northing	Easting	Latitude	Longitude
Labrisa 35-10HZ Landing	7001.70	-1462.99	2913.33	14558740.91	1745987.88	40.0872830	-104.6225480
Labrisa 35-10HZ TD	7055.60	-11772.06	2912.84	14548431.92	1746029.92	40.0589730	-104.6225540



Occidental Petroleum

Weld County, CO (UTM-NAD83)

2N-65W-35 (Labrisa Pad)

Labrisa 35-10HZ

OH

OH



Standard Survey Report

19 March, 2024

Total Report Version 1.60

COMPASS 5000.16 Build 97

Survey Report

Company:	Occidental Petroleum	Local Co-ordinate Reference:	Well Labrisa 35-10HZ
Project:	Weld County, CO (UTM-NAD83)	TVD Reference:	4970' GL + 26' KB @ 4996.00usft
Site:	2N-65W-35 (Labrisa Pad)	MD Reference:	4970' GL + 26' KB @ 4996.00usft
Well:	Labrisa 35-10HZ	North Reference:	True
Wellbore:	OH	Survey Calculation Method:	Minimum Curvature
Design:	OH	Database:	.Total Directional Production DB

Project	Weld County, CO (UTM-NAD83)		
Map System:	Universal Transverse Mercator (US Survey Feet)	System Datum:	Ground Level
Geo Datum:	North American Datum 1983		
Map Zone:	Zone 13N (108 W to 102 W)		

Site	2N-65W-35 (Labrisa Pad)		
Site Position:		Northing:	14,560,192.78 usft
From:	Map	Easting:	1,742,933.63 usft
Position Uncertainty:	0.00 usft	Slot Radius:	13-3/16 "
		Latitude:	40.0913051
		Longitude:	-104.6334463

Well	Labrisa 35-10HZ		
Well Position	+N/-S	0.00 usft	Northing:
	+E/-W	0.00 usft	Easting:
Position Uncertainty	3.28 usft	Wellhead Elevation:	usft
Grid Convergence:	0.24 °	Ground Level:	4,970.00 usft
		Latitude:	40.0913010
		Longitude:	-104.6329640

Wellbore	OH		
Magnetics	Model Name	Sample Date	Declination
	HDGM2024	3/11/2024	(°)
			7.73
		Dip Angle	(°)
		66.23	
		Field Strength	(nT)
			51,462.50000000

Design	OH		
Audit Notes:			
Version:	1.0	Phase:	ACTUAL
Vertical Section:	Depth From (TVD)	+N/-S	+E/-W
	(usft)	(usft)	(usft)
	0.00	0.00	0.00
		Direction	(°)
			180.00
		Tie On Depth:	0.00

Survey Program	Date	3/19/2024		
From	To	Survey (Wellbore)	Tool Name	Description
(usft)	(usft)			
89.00	2,156.00	OH (OH)	APC_ISCWSA REV 2 MWD+ Fixed:v2:crustal field declination	
2,210.00	18,458.00	Survey #2 (OH)	MWD+IFR1+SAG+MS_Rev ! ISCWSA MWD + IFR1 + Sag Correction + Multi-Station	

Survey													
Measured Depth	INC	AZI	Vertical Depth	Local Coordinates		Map Coordinates		Geo Coordinates		Vertical Section	Dogleg Rate	Build Rate	Turn Rate
(usft)	(°)	(°)	(usft)	+N/-S	+E/-W	Northing	Easting	Latitude	Longitude	(usft)	(°/100usft)	(°/100usft)	(°/100usft)
				(usft)	(usft)	(usft)	(usft)	(°)	(°)				
0.00	0.00	0.00	0.00	0.00	0.00	14,560,191.87	1,743,068.54	40.0913010	-104.6329640	0.00	0.00	0.00	0.00
89.00	0.27	110.15	89.00	-0.07	0.20	14,560,191.80	1,743,068.74	40.0913008	-104.6329633	0.07	0.30	0.30	0.00
100.00	0.23	108.07	100.00	-0.09	0.24	14,560,191.78	1,743,068.78	40.0913008	-104.6329631	0.09	0.41	-0.40	-18.87
SHL 1386' FSL & 2079' FWL (Sec 35)													
181.00	0.12	324.94	181.00	-0.07	0.35	14,560,191.80	1,743,068.88	40.0913008	-104.6329627	0.07	0.41	-0.13	-176.71
272.00	0.64	96.54	272.00	-0.05	0.80	14,560,191.82	1,743,069.33	40.0913009	-104.6329611	0.05	0.80	0.57	144.62

Survey Report

Company:	Occidental Petroleum	Local Co-ordinate Reference:	Well Labrisa 35-10HZ
Project:	Weld County, CO (UTM-NAD83)	TVD Reference:	4970' GL + 26' KB @ 4996.00usft
Site:	2N-65W-35 (Labrisa Pad)	MD Reference:	4970' GL + 26' KB @ 4996.00usft
Well:	Labrisa 35-10HZ	North Reference:	True
Wellbore:	OH	Survey Calculation Method:	Minimum Curvature
Design:	OH	Database:	.Total Directional Production DB

Survey													
Measured Depth (usft)	INC (°)	AZI (°)	Vertical Depth (usft)	Local Coordinates +N/-S (usft)	+E/-W (usft)	Map Coordinates Northing (usft)	Easting (usft)	Geo Coordinates Latitude (°)	Longituge (°)	Vertical Section (usft)	Dogleg Rate (°/100usft)	Build Rate (°/100usft)	Turn Rate (°/100usft)
363.00	1.81	116.28	362.98	-0.74	2.59	14,560,191.14	1,743,071.13	40.0912990	-104.6329547	0.74	1.35	1.29	21.69
452.00	2.76	106.06	451.90	-1.96	5.91	14,560,189.94	1,743,074.45	40.0912957	-104.6329429	1.96	1.16	1.07	-11.48
542.00	5.82	100.25	541.64	-3.37	12.48	14,560,188.55	1,743,081.03	40.0912918	-104.6329193	3.37	3.43	3.40	-6.46
631.00	6.70	100.77	630.11	-5.14	22.02	14,560,186.82	1,743,090.58	40.0912869	-104.6328852	5.14	0.99	0.99	0.58
721.00	6.86	104.23	719.48	-7.44	32.39	14,560,184.56	1,743,100.96	40.0912806	-104.6328482	7.44	0.49	0.18	3.84
810.00	8.83	106.44	807.64	-10.68	44.10	14,560,181.37	1,743,112.68	40.0912717	-104.6328063	10.68	2.24	2.21	2.48
900.00	12.82	93.54	896.04	-13.26	60.70	14,560,178.86	1,743,129.29	40.0912646	-104.6327470	13.26	5.16	4.43	-14.33
989.00	13.23	93.28	982.75	-14.45	80.72	14,560,177.75	1,743,149.32	40.0912613	-104.6326754	14.45	0.47	0.46	-0.29
1,079.00	13.50	97.34	1,070.31	-16.38	101.42	14,560,175.91	1,743,170.03	40.0912560	-104.6326013	16.38	1.08	0.30	4.51
1,168.00	12.52	93.02	1,157.03	-18.22	121.36	14,560,174.15	1,743,189.97	40.0912510	-104.6325301	18.22	1.55	-1.10	-4.85
1,258.00	14.72	102.38	1,244.50	-21.18	142.27	14,560,171.27	1,743,210.90	40.0912429	-104.6324553	21.18	3.45	2.44	10.40
1,347.00	16.50	104.16	1,330.22	-26.70	165.57	14,560,165.85	1,743,234.22	40.0912277	-104.6323720	26.70	2.07	2.00	2.00
1,437.00	17.89	105.51	1,416.19	-33.52	191.29	14,560,159.13	1,743,259.96	40.0912090	-104.6322800	33.52	1.61	1.54	1.50
1,526.00	20.86	104.85	1,500.14	-41.24	219.78	14,560,151.53	1,743,288.49	40.0911878	-104.6321781	41.24	3.35	3.34	-0.74
1,616.00	22.00	103.89	1,583.92	-49.39	251.64	14,560,143.51	1,743,320.38	40.0911654	-104.6320642	49.39	1.33	1.27	-1.07
1,705.00	22.79	103.52	1,666.21	-57.43	284.58	14,560,135.62	1,743,353.35	40.0911433	-104.6319465	57.43	0.90	0.89	-0.42
1,795.00	24.13	102.55	1,748.77	-65.50	319.49	14,560,127.69	1,743,388.29	40.0911212	-104.6318217	65.50	1.55	1.49	-1.08
1,884.00	25.28	101.71	1,829.62	-73.31	355.85	14,560,120.03	1,743,424.69	40.0910997	-104.6316916	73.31	1.35	1.29	-0.94
1,974.00	24.92	101.14	1,911.12	-80.87	393.27	14,560,112.62	1,743,462.14	40.0910789	-104.6315578	80.87	0.48	-0.40	-0.63
2,063.00	25.60	101.84	1,991.61	-88.44	430.49	14,560,105.20	1,743,499.39	40.0910582	-104.6314248	88.44	0.83	0.76	0.79
2,156.00	26.61	102.66	2,075.12	-97.13	470.48	14,560,096.68	1,743,539.41	40.0910343	-104.6312818	97.13	1.15	1.09	0.88
2,210.00	28.13	104.96	2,123.08	-103.07	494.58	14,560,090.84	1,743,563.54	40.0910180	-104.6311956	103.07	3.43	2.81	4.26
2,300.00	26.93	104.00	2,202.88	-113.47	534.85	14,560,080.60	1,743,603.85	40.0909894	-104.6310516	113.47	1.42	-1.33	-1.07
2,389.00	29.70	104.57	2,281.23	-123.90	575.75	14,560,070.35	1,743,644.80	40.0909608	-104.6309054	123.90	3.13	3.11	0.64
2,479.00	28.72	103.78	2,359.78	-134.66	618.34	14,560,059.76	1,743,687.42	40.0909312	-104.6307531	134.66	1.17	-1.09	-0.88
2,568.00	28.02	102.82	2,438.09	-144.39	659.49	14,560,050.20	1,743,728.62	40.0909045	-104.6306060	144.39	0.94	-0.79	-1.08
2,658.00	27.21	101.56	2,517.84	-153.20	700.26	14,560,041.55	1,743,769.43	40.0908803	-104.6304602	153.20	1.11	-0.90	-1.40
2,747.00	26.27	101.25	2,597.32	-161.12	739.51	14,560,033.80	1,743,808.71	40.0908585	-104.6303199	161.12	1.07	-1.06	-0.35
2,837.00	29.31	102.84	2,676.93	-169.91	780.54	14,560,025.18	1,743,849.77	40.0908344	-104.6301732	169.91	3.48	3.38	1.77
2,926.00	28.47	102.20	2,754.86	-179.23	822.51	14,560,016.03	1,743,891.78	40.0908088	-104.6300231	179.23	1.01	-0.94	-0.72
3,037.00	27.15	101.95	2,853.03	-190.07	873.15	14,560,005.40	1,743,942.47	40.0907790	-104.6298420	190.07	1.19	-1.19	-0.23
3,127.00	26.07	101.54	2,933.50	-198.28	912.62	14,559,997.36	1,743,981.97	40.0907565	-104.6297009	198.28	1.22	-1.20	-0.46
3,216.00	30.42	105.25	3,011.89	-208.12	953.54	14,559,987.68	1,744,022.93	40.0907295	-104.6295546	208.12	5.27	4.89	4.17
3,306.00	29.31	104.28	3,089.94	-219.55	996.87	14,559,976.44	1,744,066.31	40.0906981	-104.6293997	219.55	1.35	-1.23	-1.08
3,396.00	28.13	103.61	3,168.86	-229.97	1,038.84	14,559,966.18	1,744,108.32	40.0906694	-104.6292496	229.97	1.36	-1.31	-0.74
3,485.00	26.75	102.96	3,247.85	-239.40	1,078.76	14,559,956.92	1,744,148.27	40.0906435	-104.6291069	239.40	1.59	-1.55	-0.73
3,574.00	25.12	102.48	3,327.88	-247.98	1,116.72	14,559,948.50	1,744,186.27	40.0906200	-104.6289712	247.98	1.85	-1.83	-0.54
3,664.00	29.07	106.19	3,408.00	-258.21	1,156.39	14,559,938.43	1,744,225.98	40.0905919	-104.6288293	258.21	4.77	4.39	4.12

Survey Report

Company:	Occidental Petroleum	Local Co-ordinate Reference:	Well Labrisa 35-10HZ
Project:	Weld County, CO (UTM-NAD83)	TVD Reference:	4970' GL + 26' KB @ 4996.00usft
Site:	2N-65W-35 (Labrisa Pad)	MD Reference:	4970' GL + 26' KB @ 4996.00usft
Well:	Labrisa 35-10HZ	North Reference:	True
Wellbore:	OH	Survey Calculation Method:	Minimum Curvature
Design:	OH	Database:	.Total Directional Production DB

Survey													
Measured Depth (usft)	INC (°)	AZI (°)	Vertical Depth (usft)	Local Coordinates +N/-S (usft)	Local Coordinates +E/-W (usft)	Map Coordinates Northing (usft)	Map Coordinates Easting (usft)	Geo Coordinates Latitude (°)	Geo Coordinates Longitude (°)	Vertical Section (usft)	Dogleg Rate (°/100usft)	Build Rate (°/100usft)	Turn Rate (°/100usft)
3,754.00	27.24	105.55	3,487.34	-269.83	1,197.23	14,559,926.98	1,744,266.88	40.0905600	-104.6286833	269.83	2.06	-2.03	-0.71
3,843.00	25.32	104.68	3,567.14	-280.11	1,235.27	14,559,916.86	1,744,304.95	40.0905317	-104.6285473	280.11	2.20	-2.16	-0.98
3,933.00	26.70	105.58	3,648.03	-290.42	1,273.37	14,559,906.70	1,744,343.09	40.0905034	-104.6284111	290.42	1.59	1.53	1.00
4,023.00	29.42	105.44	3,727.44	-301.74	1,314.16	14,559,895.56	1,744,383.93	40.0904723	-104.6282653	301.74	3.02	3.02	-0.16
4,112.00	27.15	105.08	3,805.81	-312.84	1,354.84	14,559,884.62	1,744,424.66	40.0904418	-104.6281198	312.84	2.56	-2.55	-0.40
4,202.00	25.09	104.51	3,886.61	-322.97	1,393.14	14,559,874.65	1,744,463.00	40.0904140	-104.6279829	322.97	2.31	-2.29	-0.63
4,291.00	27.32	101.26	3,966.46	-331.68	1,431.45	14,559,866.09	1,744,501.34	40.0903901	-104.6278459	331.68	2.98	2.51	-3.65
4,381.00	29.65	100.59	4,045.56	-339.81	1,473.59	14,559,858.14	1,744,543.52	40.0903678	-104.6276952	339.81	2.61	2.59	-0.74
4,470.00	29.47	104.39	4,122.99	-349.29	1,516.44	14,559,848.83	1,744,586.41	40.0903417	-104.6275420	349.29	2.12	-0.20	4.27
4,560.00	28.89	103.41	4,201.56	-359.84	1,559.04	14,559,838.46	1,744,629.04	40.0903127	-104.6273897	359.84	0.83	-0.64	-1.09
4,649.00	28.40	107.19	4,279.68	-371.08	1,600.17	14,559,827.39	1,744,670.23	40.0902819	-104.6272426	371.08	2.11	-0.55	4.25
4,739.00	26.06	106.11	4,359.70	-382.89	1,639.62	14,559,815.74	1,744,709.72	40.0902494	-104.6271016	382.89	2.66	-2.60	-1.20
4,829.00	27.45	108.69	4,440.06	-395.03	1,678.26	14,559,803.77	1,744,748.42	40.0902161	-104.6269634	395.03	2.01	1.54	2.87
4,918.00	28.79	109.47	4,518.56	-408.75	1,717.90	14,559,790.21	1,744,788.11	40.0901784	-104.6268217	408.75	1.56	1.51	0.88
5,008.00	27.12	107.81	4,598.05	-422.24	1,757.87	14,559,776.88	1,744,828.13	40.0901413	-104.6266788	422.24	2.05	-1.86	-1.84
5,097.00	28.29	109.61	4,676.85	-435.53	1,797.05	14,559,763.76	1,744,867.37	40.0901048	-104.6265387	435.53	1.62	1.31	2.02
5,187.00	27.34	109.21	4,756.45	-449.49	1,836.66	14,559,749.96	1,744,907.04	40.0900665	-104.6263971	449.49	1.08	-1.06	-0.44
5,276.00	28.00	110.97	4,835.27	-463.69	1,875.47	14,559,735.92	1,744,945.90	40.0900275	-104.6262584	463.69	1.18	0.74	1.98
5,366.00	24.86	109.26	4,915.86	-477.49	1,913.06	14,559,722.27	1,744,983.56	40.0899896	-104.6261239	477.49	3.59	-3.49	-1.90
5,456.00	26.08	108.46	4,997.11	-490.00	1,949.69	14,559,709.92	1,745,020.23	40.0899552	-104.6259930	490.00	1.41	1.36	-0.89
5,545.00	26.89	109.59	5,076.77	-502.94	1,987.21	14,559,697.13	1,745,057.80	40.0899197	-104.6258589	502.94	1.07	0.91	1.27
5,635.00	29.14	110.21	5,156.22	-517.34	2,026.95	14,559,682.90	1,745,097.61	40.0898801	-104.6257168	517.34	2.52	2.50	0.69
5,725.00	26.90	108.69	5,235.66	-531.43	2,066.81	14,559,668.97	1,745,137.52	40.0898414	-104.6255743	531.43	2.61	-2.49	-1.69
5,814.00	28.38	108.64	5,314.50	-544.65	2,105.92	14,559,655.92	1,745,176.69	40.0898051	-104.6254344	544.65	1.66	1.66	-0.06
5,904.00	27.78	107.12	5,393.91	-557.66	2,146.23	14,559,643.07	1,745,217.06	40.0897694	-104.6252903	557.66	1.04	-0.67	-1.69
5,993.00	27.96	105.50	5,472.59	-569.34	2,186.16	14,559,631.56	1,745,257.03	40.0897373	-104.6251475	569.34	0.87	0.20	-1.82
6,083.00	28.71	106.25	5,551.81	-581.02	2,227.25	14,559,620.04	1,745,298.16	40.0897052	-104.6250006	581.02	0.92	0.83	0.83
6,173.00	29.74	105.39	5,630.35	-593.00	2,269.52	14,559,608.24	1,745,340.49	40.0896723	-104.6248495	593.00	1.24	1.14	-0.96
6,262.00	28.08	107.38	5,708.26	-605.11	2,310.80	14,559,596.29	1,745,381.82	40.0896390	-104.6247019	605.11	2.16	-1.87	2.24
6,352.00	29.76	108.90	5,787.03	-618.68	2,352.15	14,559,582.90	1,745,423.22	40.0896018	-104.6245541	618.68	2.04	1.87	1.69
6,442.00	28.43	113.08	5,865.68	-634.31	2,393.00	14,559,567.43	1,745,464.13	40.0895588	-104.6244080	634.31	2.70	-1.48	4.64
6,531.00	25.28	109.23	5,945.08	-648.88	2,430.44	14,559,553.02	1,745,501.64	40.0895188	-104.6242741	648.88	4.04	-3.54	-4.33
6,621.00	27.19	108.01	6,025.81	-661.57	2,468.15	14,559,540.49	1,745,539.39	40.0894839	-104.6241393	661.57	2.21	2.12	-1.36
6,710.00	27.57	111.26	6,104.84	-675.33	2,506.68	14,559,526.89	1,745,577.99	40.0894462	-104.6240016	675.33	1.73	0.43	3.65
6,800.00	27.99	110.67	6,184.47	-690.33	2,545.85	14,559,512.04	1,745,617.22	40.0894049	-104.6238615	690.33	0.56	0.47	-0.66
6,890.00	27.44	112.26	6,264.14	-705.64	2,584.80	14,559,496.89	1,745,656.23	40.0893629	-104.6237223	705.64	1.02	-0.61	1.77
6,979.00	26.54	108.62	6,343.45	-719.76	2,622.63	14,559,482.93	1,745,694.11	40.0893241	-104.6235870	719.76	2.11	-1.01	-4.09

Survey Report

Company:	Occidental Petroleum	Local Co-ordinate Reference:	Well Labrisa 35-10HZ
Project:	Weld County, CO (UTM-NAD83)	TVD Reference:	4970' GL + 26' KB @ 4996.00usft
Site:	2N-65W-35 (Labrisa Pad)	MD Reference:	4970' GL + 26' KB @ 4996.00usft
Well:	Labrisa 35-10HZ	North Reference:	True
Wellbore:	OH	Survey Calculation Method:	Minimum Curvature
Design:	OH	Database:	.Total Directional Production DB

Survey													
Measured Depth (usft)	INC (°)	AZI (°)	Vertical Depth (usft)	Local Coordinates +N/-S (usft)	+E/-W (usft)	Map Coordinates Northing (usft)	Easting (usft)	Geo Coordinates Latitude (°)	Longitude (°)	Vertical Section (usft)	Dogleg Rate (°/100usft)	Build Rate (°/100usft)	Turn Rate (°/100usft)
7,070.00	26.98	109.34	6,424.71	-733.09	2,661.37	14,559,469.76	1,745,732.91	40.0892875	-104.6234485	733.09	0.60	0.48	0.79
7,160.00	31.55	120.61	6,503.26	-751.86	2,700.95	14,559,451.15	1,745,772.57	40.0892359	-104.6233070	751.86	7.93	5.08	12.52
7,249.00	39.12	131.88	6,575.89	-782.54	2,742.00	14,559,420.65	1,745,813.74	40.0891517	-104.6231603	782.54	11.19	8.51	12.66
7,338.00	42.65	140.86	6,643.22	-824.72	2,781.98	14,559,378.63	1,745,853.90	40.0890358	-104.6230173	824.72	7.70	3.97	10.09
7,428.00	45.86	149.89	6,707.74	-876.37	2,817.47	14,559,327.13	1,745,889.60	40.0888940	-104.6228904	876.37	7.85	3.57	10.03
7,517.00	50.93	151.68	6,766.82	-934.45	2,849.91	14,559,269.19	1,745,922.28	40.0887345	-104.6227745	934.45	5.89	5.70	2.01
7,607.00	55.81	159.34	6,820.55	-1,000.14	2,879.66	14,559,203.62	1,745,952.30	40.0885541	-104.6226682	1,000.14	8.72	5.42	8.51
7,696.00	65.11	166.76	6,864.43	-1,074.11	2,901.97	14,559,129.74	1,745,974.91	40.0883509	-104.6225884	1,074.11	12.71	10.45	8.34
7,786.00	71.13	178.96	6,898.07	-1,156.77	2,912.13	14,559,047.13	1,745,985.42	40.0881240	-104.6225521	1,156.77	14.24	6.69	13.56
7,876.00	72.58	187.32	6,926.14	-1,242.07	2,907.42	14,558,961.81	1,745,981.06	40.0878897	-104.6225690	1,242.07	8.97	1.61	9.29
7,965.00	71.16	186.73	6,953.83	-1,326.01	2,897.08	14,558,877.82	1,745,971.06	40.0876592	-104.6226060	1,326.01	1.72	-1.60	-0.66
8,018.67	74.44	183.56	6,969.70	-1,377.06	2,892.50	14,558,826.75	1,745,966.69	40.0875190	-104.6226224	1,377.06	8.32	6.12	-5.91
Cross Section Line 8018.67 'MD (0' FNL - 324' FEL) Sec 02													
8,055.00	76.69	181.47	6,978.76	-1,412.21	2,890.96	14,558,791.60	1,745,965.30	40.0874225	-104.6226279	1,412.21	8.32	6.19	-5.75
8,095.85	81.48	180.12	6,986.49	-1,452.30	2,890.40	14,558,751.50	1,745,964.91	40.0873124	-104.6226299	1,452.30	12.18	11.74	-3.31
Cross Hard Line 8095.85 'MD (75' FNL - 325' FEL) Sec 02													
8,144.00	87.14	178.57	6,991.26	-1,500.19	2,890.95	14,558,703.62	1,745,965.66	40.0871809	-104.6226280	1,500.19	12.18	11.75	-3.22
8,234.00	90.79	182.87	6,992.89	-1,590.13	2,889.82	14,558,613.67	1,745,964.90	40.0869339	-104.6226321	1,590.13	6.27	4.06	4.78
8,323.00	90.70	187.39	6,991.73	-1,678.75	2,881.87	14,558,525.03	1,745,957.31	40.0866905	-104.6226606	1,678.75	5.08	-0.10	5.08
8,412.00	87.82	187.86	6,992.88	-1,766.94	2,870.06	14,558,436.78	1,745,945.86	40.0864484	-104.6227028	1,766.94	3.28	-3.24	0.53
8,502.00	86.72	187.98	6,997.17	-1,855.98	2,857.67	14,558,347.69	1,745,933.84	40.0862038	-104.6227471	1,855.98	1.23	-1.22	0.13
8,591.00	86.27	185.04	7,002.61	-1,944.23	2,847.60	14,558,259.40	1,745,924.14	40.0859615	-104.6227832	1,944.23	3.34	-0.51	-3.30
8,681.00	87.57	182.25	7,007.44	-2,033.91	2,841.89	14,558,169.70	1,745,918.80	40.0857152	-104.6228036	2,033.91	3.42	1.44	-3.10
8,771.00	89.35	180.29	7,009.86	-2,123.85	2,839.90	14,558,079.76	1,745,917.17	40.0854683	-104.6228108	2,123.85	2.94	1.98	-2.18
8,860.00	88.31	180.52	7,011.68	-2,212.82	2,839.27	14,557,990.78	1,745,916.91	40.0852239	-104.6228131	2,212.82	1.20	-1.17	0.26
8,950.00	90.04	179.19	7,012.98	-2,302.81	2,839.50	14,557,900.79	1,745,917.51	40.0849768	-104.6228123	2,302.81	2.42	1.92	-1.48
9,039.00	89.88	179.17	7,013.04	-2,391.80	2,840.77	14,557,811.81	1,745,919.15	40.0847324	-104.6228078	2,391.80	0.18	-0.18	-0.02
9,129.00	90.13	180.06	7,013.03	-2,481.80	2,841.37	14,557,721.81	1,745,920.13	40.0844853	-104.6228056	2,481.80	1.03	0.28	0.99
9,219.00	89.77	180.03	7,013.11	-2,571.80	2,841.30	14,557,631.82	1,745,920.43	40.0842381	-104.6228059	2,571.80	0.40	-0.40	-0.03
9,308.00	91.04	179.21	7,012.48	-2,660.79	2,841.89	14,557,542.83	1,745,921.39	40.0839937	-104.6228039	2,660.79	1.70	1.43	-0.92
9,398.00	91.22	179.01	7,010.71	-2,750.76	2,843.29	14,557,452.86	1,745,923.15	40.0837467	-104.6227989	2,750.76	0.30	0.20	-0.22
9,488.00	91.33	178.99	7,008.70	-2,840.73	2,844.86	14,557,362.90	1,745,925.10	40.0834996	-104.6227933	2,840.73	0.12	0.12	-0.02
9,577.00	91.39	178.43	7,006.59	-2,929.68	2,846.86	14,557,273.96	1,745,927.47	40.0832553	-104.6227862	2,929.68	0.63	0.07	-0.63
9,667.00	91.42	178.62	7,004.38	-3,019.62	2,849.18	14,557,184.03	1,745,930.15	40.0830084	-104.6227780	3,019.62	0.21	0.03	0.21
9,756.00	91.36	178.47	7,002.22	-3,108.57	2,851.44	14,557,095.09	1,745,932.78	40.0827641	-104.6227699	3,108.57	0.18	-0.07	-0.17
9,846.00	91.26	178.10	7,000.17	-3,198.50	2,854.13	14,557,005.17	1,745,935.84	40.0825171	-104.6227603	3,198.50	0.43	-0.11	-0.41
9,935.00	91.46	177.83	6,998.05	-3,287.42	2,857.29	14,556,916.26	1,745,939.37	40.0822729	-104.6227491	3,287.42	0.38	0.22	-0.30
10,025.00	91.72	177.70	6,995.56	-3,377.32	2,860.80	14,556,826.38	1,745,943.25	40.0820261	-104.6227366	3,377.32	0.32	0.29	-0.14

Survey Report

Company:	Occidental Petroleum	Local Co-ordinate Reference:	Well Labrisa 35-10HZ
Project:	Weld County, CO (UTM-NAD83)	TVD Reference:	4970' GL + 26' KB @ 4996.00usft
Site:	2N-65W-35 (Labrisa Pad)	MD Reference:	4970' GL + 26' KB @ 4996.00usft
Well:	Labrisa 35-10HZ	North Reference:	True
Wellbore:	OH	Survey Calculation Method:	Minimum Curvature
Design:	OH	Database:	.Total Directional Production DB

Survey													
Measured Depth (usft)	INC (°)	AZI (°)	Vertical Depth (usft)	Local Coordinates +N/-S (usft)	+E/-W (usft)	Map Coordinates Northing (usft)	Easting (usft)	Geo Coordinates Latitude (°)	Longituge (°)	Vertical Section (usft)	Dogleg Rate (°/100usft)	Build Rate (°/100usft)	Turn Rate (°/100usft)
10,114.00	89.05	179.58	6,994.96	-3,466.28	2,862.91	14,556,737.43	1,745,945.73	40.0817818	-104.6227290	3,466.28	3.67	-3.00	2.11
10,204.00	88.68	178.97	6,996.74	-3,556.25	2,864.05	14,556,647.46	1,745,947.24	40.0815347	-104.6227250	3,556.25	0.79	-0.41	-0.68
10,293.00	87.94	178.42	6,999.37	-3,645.19	2,866.08	14,556,558.53	1,745,949.63	40.0812905	-104.6227178	3,645.19	1.04	-0.83	-0.62
10,383.00	90.76	179.03	7,000.39	-3,735.15	2,868.08	14,556,468.58	1,745,952.00	40.0810434	-104.6227107	3,735.15	3.21	3.13	0.68
10,473.00	90.25	177.36	6,999.59	-3,825.10	2,870.91	14,556,378.64	1,745,955.21	40.0807964	-104.6227006	3,825.10	1.94	-0.57	-1.86
10,562.00	89.52	177.44	6,999.77	-3,914.01	2,874.95	14,556,289.75	1,745,959.61	40.0805522	-104.6226862	3,914.01	0.83	-0.82	0.09
10,652.00	89.45	180.54	7,000.58	-4,003.98	2,876.54	14,556,199.79	1,745,961.57	40.0803052	-104.6226806	4,003.98	3.45	-0.08	3.44
10,742.00	89.16	179.73	7,001.67	-4,093.97	2,876.33	14,556,109.80	1,745,961.73	40.0800580	-104.6226814	4,093.97	0.96	-0.32	-0.90
10,831.00	90.30	180.42	7,002.09	-4,182.97	2,876.21	14,556,020.80	1,745,961.98	40.0798137	-104.6226818	4,182.97	1.50	1.28	0.78
10,921.00	90.94	180.51	7,001.12	-4,272.96	2,875.48	14,555,930.81	1,745,961.62	40.0795665	-104.6226845	4,272.96	0.72	0.71	0.10
11,010.00	89.95	180.06	7,000.43	-4,361.96	2,875.04	14,555,841.81	1,745,961.55	40.0793221	-104.6226861	4,361.96	1.22	-1.11	-0.51
11,100.00	87.48	180.75	7,002.45	-4,451.92	2,874.40	14,555,751.84	1,745,961.28	40.0790751	-104.6226884	4,451.92	2.85	-2.74	0.77
11,190.00	87.58	180.23	7,006.33	-4,541.84	2,873.63	14,555,661.93	1,745,960.88	40.0788282	-104.6226912	4,541.84	0.59	0.11	-0.58
11,279.00	87.26	180.32	7,010.33	-4,630.74	2,873.20	14,555,573.02	1,745,960.82	40.0785840	-104.6226927	4,630.74	0.37	-0.36	0.10
11,369.00	86.15	180.54	7,015.50	-4,720.59	2,872.53	14,555,483.17	1,745,960.52	40.0783373	-104.6226952	4,720.59	1.26	-1.23	0.24
11,458.00	87.90	180.09	7,020.12	-4,809.47	2,872.04	14,555,394.29	1,745,960.40	40.0780932	-104.6226970	4,809.47	2.03	1.97	-0.51
11,548.00	89.36	180.29	7,022.28	-4,899.44	2,871.74	14,555,304.32	1,745,960.47	40.0778461	-104.6226981	4,899.44	1.64	1.62	0.22
11,638.00	89.43	179.63	7,023.23	-4,989.43	2,871.81	14,555,214.33	1,745,960.90	40.0775990	-104.6226979	4,989.43	0.74	0.08	-0.73
11,727.00	89.41	178.53	7,024.13	-5,078.42	2,873.23	14,555,125.35	1,745,962.70	40.0773546	-104.6226928	5,078.42	1.24	-0.02	-1.24
11,817.00	89.17	178.02	7,025.24	-5,168.37	2,875.94	14,555,035.41	1,745,965.78	40.0771076	-104.6226832	5,168.37	0.63	-0.27	-0.57
11,906.00	89.89	177.42	7,025.97	-5,257.29	2,879.48	14,554,946.50	1,745,969.69	40.0768634	-104.6226705	5,257.29	1.05	0.81	-0.67
11,996.00	90.55	178.88	7,025.63	-5,347.24	2,882.39	14,554,856.56	1,745,972.96	40.0766164	-104.6226602	5,347.24	1.78	0.73	1.62
12,086.00	91.40	180.26	7,024.09	-5,437.22	2,883.07	14,554,766.59	1,745,974.01	40.0763693	-104.6226578	5,437.22	1.80	0.94	1.53
12,175.00	89.95	180.59	7,023.05	-5,526.21	2,882.41	14,554,677.59	1,745,973.72	40.0761249	-104.6226602	5,526.21	1.67	-1.63	0.37
12,265.00	88.83	180.78	7,024.00	-5,616.20	2,881.33	14,554,587.60	1,745,973.01	40.0758778	-104.6226641	5,616.20	1.26	-1.24	0.21
12,354.00	89.05	180.28	7,025.65	-5,705.18	2,880.51	14,554,498.62	1,745,972.56	40.0756335	-104.6226671	5,705.18	0.61	0.25	-0.56
12,444.00	88.65	179.91	7,027.46	-5,795.16	2,880.36	14,554,408.64	1,745,972.78	40.0753864	-104.6226676	5,795.16	0.61	-0.44	-0.41
12,533.00	88.81	179.18	7,029.43	-5,884.14	2,881.06	14,554,319.67	1,745,973.85	40.0751420	-104.6226651	5,884.14	0.84	0.18	-0.82
12,623.00	89.33	178.22	7,030.89	-5,974.10	2,883.11	14,554,229.71	1,745,976.27	40.0748950	-104.6226579	5,974.10	1.21	0.58	-1.07
12,713.00	89.41	177.83	7,031.88	-6,064.04	2,886.21	14,554,139.79	1,745,979.74	40.0746480	-104.6226468	6,064.04	0.44	0.09	-0.43
12,803.00	90.31	179.21	7,032.10	-6,154.01	2,888.53	14,554,049.83	1,745,982.43	40.0744009	-104.6226386	6,154.01	1.83	1.00	1.53
12,892.00	88.74	180.51	7,032.84	-6,243.00	2,888.75	14,553,960.84	1,745,983.02	40.0741566	-104.6226378	6,243.00	2.29	-1.76	1.46
12,982.00	88.27	179.43	7,035.19	-6,332.97	2,888.80	14,553,870.87	1,745,983.44	40.0739095	-104.6226377	6,332.97	1.31	-0.52	-1.20
13,072.00	87.59	178.70	7,038.44	-6,422.90	2,890.26	14,553,780.95	1,745,985.28	40.0736625	-104.6226325	6,422.90	1.11	-0.76	-0.81
13,161.00	87.80	181.08	7,042.02	-6,511.82	2,890.43	14,553,692.03	1,745,985.81	40.0734183	-104.6226319	6,511.82	2.68	0.24	2.67
13,235.08	89.13	182.28	7,044.00	-6,585.84	2,888.26	14,553,618.01	1,745,983.95	40.0732151	-104.6226397	6,585.84	2.42	1.80	1.62
Cross Section Line 13235.08 'MD (0' FNL - 284' FEL) Sec 11													
13,251.00	89.42	182.54	7,044.20	-6,601.74	2,887.59	14,553,602.10	1,745,983.34	40.0731714	-104.6226421	6,601.74	2.42	1.80	1.62

Survey Report

Company:	Occidental Petroleum	Local Co-ordinate Reference:	Well Labrisa 35-10HZ
Project:	Weld County, CO (UTM-NAD83)	TVD Reference:	4970' GL + 26' KB @ 4996.00usft
Site:	2N-65W-35 (Labrisa Pad)	MD Reference:	4970' GL + 26' KB @ 4996.00usft
Well:	Labrisa 35-10HZ	North Reference:	True
Wellbore:	OH	Survey Calculation Method:	Minimum Curvature
Design:	OH	Database:	.Total Directional Production DB

Survey													
Measured Depth (usft)	INC (°)	AZI (°)	Vertical Depth (usft)	Local Coordinates +N/-S (usft)	Local Coordinates +E/-W (usft)	Map Coordinates Northing (usft)	Map Coordinates Easting (usft)	Geo Coordinates Latitude (°)	Geo Coordinates Longitude (°)	Vertical Section (usft)	Dogleg Rate (°/100usft)	Build Rate (°/100usft)	Turn Rate (°/100usft)
13,340.00	89.15	181.99	7,045.31	-6,690.66	2,884.07	14,553,513.16	1,745,980.19	40.0729272	-104.6226547	6,690.66	0.69	-0.30	-0.62
13,430.00	90.56	181.35	7,045.54	-6,780.62	2,881.45	14,553,423.19	1,745,977.94	40.0726802	-104.6226641	6,780.62	1.72	1.57	-0.71
13,520.00	90.45	180.82	7,044.75	-6,870.60	2,879.75	14,553,333.21	1,745,976.61	40.0724331	-104.6226703	6,870.60	0.60	-0.12	-0.59
13,609.00	90.00	179.97	7,044.40	-6,959.60	2,879.13	14,553,244.21	1,745,976.36	40.0721887	-104.6226725	6,959.60	1.08	-0.51	-0.96
13,699.00	89.50	179.29	7,044.79	-7,049.59	2,879.72	14,553,154.21	1,745,977.31	40.0719415	-104.6226704	7,049.59	0.94	-0.56	-0.76
13,788.00	91.41	180.91	7,044.08	-7,138.58	2,879.56	14,553,065.22	1,745,977.53	40.0716972	-104.6226710	7,138.58	2.81	2.15	1.82
13,877.00	91.45	179.98	7,041.86	-7,227.55	2,878.87	14,552,976.25	1,745,977.20	40.0714529	-104.6226735	7,227.55	1.05	0.04	-1.04
13,967.00	91.57	179.41	7,039.49	-7,317.52	2,879.35	14,552,886.29	1,745,978.05	40.0712058	-104.6226719	7,317.52	0.65	0.13	-0.63
14,057.00	92.20	178.45	7,036.53	-7,407.45	2,881.03	14,552,796.36	1,745,980.10	40.0709588	-104.6226659	7,407.45	1.28	0.70	-1.07
14,147.00	90.50	180.20	7,034.41	-7,497.42	2,882.09	14,552,706.41	1,745,981.53	40.0707118	-104.6226621	7,497.42	2.71	-1.89	1.94
14,236.00	90.93	179.70	7,033.30	-7,586.41	2,882.16	14,552,617.42	1,745,981.98	40.0704674	-104.6226619	7,586.41	0.74	0.48	-0.56
14,326.00	90.92	179.27	7,031.84	-7,676.39	2,882.97	14,552,527.43	1,745,983.16	40.0702203	-104.6226590	7,676.39	0.48	-0.01	-0.48
14,415.00	90.25	178.38	7,030.94	-7,765.37	2,884.80	14,552,438.47	1,745,985.35	40.0699759	-104.6226526	7,765.37	1.25	-0.75	-1.00
14,505.00	90.26	177.77	7,030.54	-7,855.32	2,887.82	14,552,348.53	1,745,988.74	40.0697289	-104.6226418	7,855.32	0.68	0.01	-0.68
14,595.00	90.45	180.79	7,029.98	-7,945.30	2,888.95	14,552,258.56	1,745,990.25	40.0694818	-104.6226378	7,945.30	3.36	0.21	3.36
14,685.00	92.41	180.34	7,027.73	-8,035.26	2,888.07	14,552,168.59	1,745,989.73	40.0692348	-104.6226410	8,035.26	2.23	2.18	-0.50
14,774.00	93.41	180.62	7,023.21	-8,124.14	2,887.32	14,552,079.71	1,745,989.35	40.0689907	-104.6226437	8,124.14	1.17	1.12	0.31
14,864.00	89.39	180.73	7,021.01	-8,214.09	2,886.26	14,551,989.76	1,745,988.66	40.0687437	-104.6226475	8,214.09	4.47	-4.47	0.12
14,954.00	89.31	180.05	7,022.04	-8,304.08	2,885.65	14,551,899.76	1,745,988.42	40.0684966	-104.6226497	8,304.08	0.76	-0.09	-0.76
15,043.00	88.06	179.53	7,024.08	-8,393.05	2,885.97	14,551,810.79	1,745,989.12	40.0682522	-104.6226486	8,393.05	1.52	-1.40	-0.58
15,133.00	90.11	179.09	7,025.52	-8,483.03	2,887.06	14,551,720.82	1,745,990.57	40.0680051	-104.6226448	8,483.03	2.33	2.28	-0.49
15,223.00	89.53	178.59	7,025.80	-8,573.01	2,888.88	14,551,630.85	1,745,992.76	40.0677580	-104.6226383	8,573.01	0.85	-0.64	-0.56
15,313.00	87.89	178.51	7,027.82	-8,662.96	2,891.16	14,551,540.91	1,745,995.41	40.0675110	-104.6226302	8,662.96	1.82	-1.82	-0.09
15,402.00	89.90	179.80	7,029.54	-8,751.92	2,892.47	14,551,451.95	1,745,997.09	40.0672667	-104.6226255	8,751.92	2.68	2.26	1.45
15,492.00	88.64	179.00	7,030.69	-8,841.91	2,893.41	14,551,361.97	1,745,998.40	40.0670196	-104.6226222	8,841.91	1.66	-1.40	-0.89
15,581.00	91.03	180.68	7,030.94	-8,930.90	2,893.66	14,551,272.98	1,745,999.02	40.0667752	-104.6226214	8,930.90	3.28	2.69	1.89
15,671.00	89.89	180.80	7,030.22	-9,020.89	2,892.50	14,551,182.99	1,745,998.23	40.0665281	-104.6226256	9,020.89	1.27	-1.27	0.13
15,761.00	91.64	181.07	7,029.02	-9,110.86	2,891.03	14,551,093.01	1,745,997.13	40.0662810	-104.6226308	9,110.86	1.97	1.94	0.30
15,850.00	91.56	180.42	7,026.53	-9,199.82	2,889.87	14,551,004.05	1,745,996.34	40.0660368	-104.6226350	9,199.82	0.74	-0.09	-0.73
15,940.00	91.90	180.25	7,023.82	-9,289.78	2,889.35	14,550,914.09	1,745,996.19	40.0657897	-104.6226369	9,289.78	0.42	0.38	-0.19
16,029.00	91.48	180.17	7,021.19	-9,378.74	2,889.02	14,550,825.13	1,745,996.23	40.0655454	-104.6226381	9,378.74	0.48	-0.47	-0.09
16,119.00	90.85	178.65	7,019.36	-9,468.71	2,889.95	14,550,735.16	1,745,997.53	40.0652983	-104.6226349	9,468.71	1.83	-0.70	-1.69
16,208.00	91.27	178.79	7,017.72	-9,557.68	2,891.93	14,550,646.21	1,745,999.88	40.0650540	-104.6226278	9,557.68	0.50	0.47	0.16
16,298.00	89.13	179.04	7,017.40	-9,647.65	2,893.64	14,550,556.24	1,746,001.96	40.0648069	-104.6226217	9,647.65	2.39	-2.38	0.28
16,388.00	89.31	178.57	7,018.63	-9,737.62	2,895.52	14,550,466.27	1,746,004.20	40.0645599	-104.6226151	9,737.62	0.56	0.20	-0.52
16,477.00	88.72	178.26	7,020.16	-9,826.58	2,897.98	14,550,377.33	1,746,007.03	40.0643156	-104.6226063	9,826.58	0.75	-0.66	-0.35
16,567.00	88.24	177.34	7,022.54	-9,916.48	2,901.43	14,550,287.45	1,746,010.86	40.0640687	-104.6225940	9,916.48	1.15	-0.53	-1.02

Survey Report

Company:	Occidental Petroleum	Local Co-ordinate Reference:	Well Labrisa 35-10HZ
Project:	Weld County, CO (UTM-NAD83)	TVD Reference:	4970' GL + 26' KB @ 4996.00usft
Site:	2N-65W-35 (Labrisa Pad)	MD Reference:	4970' GL + 26' KB @ 4996.00usft
Well:	Labrisa 35-10HZ	North Reference:	True
Wellbore:	OH	Survey Calculation Method:	Minimum Curvature
Design:	OH	Database:	.Total Directional Production DB

Survey													
Measured Depth (usft)	INC (°)	AZI (°)	Vertical Depth (usft)	Local Coordinates +N/-S (usft)	+E/-W (usft)	Map Coordinates Northing (usft)	Easting (usft)	Geo Coordinates Latitude (°)	Longituge (°)	Vertical Section (usft)	Dogleg Rate (°/100usft)	Build Rate (°/100usft)	Turn Rate (°/100usft)
16,656.00	90.45	180.37	7,023.56	-10,005.44	2,903.21	14,550,198.49	1,746,013.00	40.0638244	-104.6225877	10,005.44	4.21	2.48	3.40
16,746.00	90.78	180.07	7,022.60	-10,095.43	2,902.86	14,550,108.50	1,746,013.03	40.0635773	-104.6225889	10,095.43	0.50	0.37	-0.33
16,836.00	91.12	180.93	7,021.10	-10,185.42	2,902.08	14,550,018.51	1,746,012.61	40.0633302	-104.6225918	10,185.42	1.03	0.38	0.96
16,925.00	90.38	179.75	7,019.94	-10,274.40	2,901.55	14,549,929.52	1,746,012.45	40.0630858	-104.6225937	10,274.40	1.56	-0.83	-1.33
17,015.00	89.08	181.29	7,020.36	-10,364.39	2,900.73	14,549,839.53	1,746,012.01	40.0628387	-104.6225967	10,364.39	2.24	-1.44	1.71
17,104.00	88.51	181.00	7,022.23	-10,453.36	2,898.95	14,549,750.56	1,746,010.60	40.0625944	-104.6226031	10,453.36	0.72	-0.64	-0.33
17,194.00	88.07	183.97	7,024.92	-10,543.22	2,895.05	14,549,660.68	1,746,007.07	40.0623476	-104.6226170	10,543.22	3.33	-0.49	3.30
17,284.00	88.57	185.78	7,027.56	-10,632.85	2,887.41	14,549,571.02	1,745,999.79	40.0621015	-104.6226444	10,632.85	2.09	0.56	2.01
17,373.00	87.94	185.80	7,030.27	-10,721.36	2,878.43	14,549,482.48	1,745,991.18	40.0618584	-104.6226765	10,721.36	0.71	-0.71	0.02
17,463.00	89.01	187.72	7,032.67	-10,810.70	2,867.84	14,549,393.10	1,745,980.96	40.0616131	-104.6227144	10,810.70	2.44	1.19	2.13
17,553.00	88.69	190.18	7,034.47	-10,899.57	2,853.85	14,549,304.16	1,745,967.33	40.0613690	-104.6227644	10,899.57	2.76	-0.36	2.73
17,642.00	87.12	189.37	7,037.73	-10,987.22	2,838.75	14,549,216.45	1,745,952.59	40.0611283	-104.6228185	10,987.22	1.98	-1.76	-0.91
17,732.00	87.26	191.16	7,042.14	-11,075.67	2,822.73	14,549,127.94	1,745,936.94	40.0608855	-104.6228757	11,075.67	1.99	0.16	1.99
17,822.00	89.01	193.18	7,045.07	-11,163.59	2,803.77	14,549,039.94	1,745,918.34	40.0606440	-104.6229435	11,163.59	2.97	1.94	2.24
17,911.00	91.61	193.46	7,044.59	-11,250.19	2,783.26	14,548,953.26	1,745,898.19	40.0604062	-104.6230168	11,250.19	2.94	2.92	0.31
18,001.00	92.36	195.21	7,041.47	-11,337.33	2,761.00	14,548,866.02	1,745,876.29	40.0601669	-104.6230965	11,337.33	2.11	0.83	1.94
18,090.00	92.75	198.14	7,037.50	-11,422.49	2,735.49	14,548,780.76	1,745,851.13	40.0599331	-104.6231877	11,422.49	3.32	0.44	3.29
18,180.00	93.30	197.48	7,032.75	-11,508.06	2,708.00	14,548,695.08	1,745,823.99	40.0596981	-104.6232859	11,508.06	0.95	0.61	-0.73
18,269.00	91.28	199.79	7,029.19	-11,592.32	2,679.58	14,548,610.71	1,745,795.93	40.0594667	-104.6233875	11,592.32	3.45	-2.27	2.60
18,359.00	91.32	199.04	7,027.15	-11,677.18	2,649.67	14,548,525.72	1,745,766.37	40.0592337	-104.6234944	11,677.18	0.83	0.04	-0.83
18,405.00	91.32	198.65	7,026.09	-11,720.70	2,634.82	14,548,482.14	1,745,751.69	40.0591142	-104.6235475	11,720.70	0.85	0.00	-0.85
Last Survey 18405.00 'MD													
18,458.00	91.32	198.65	7,024.87	-11,770.90	2,617.88	14,548,431.87	1,745,734.96	40.0589763	-104.6236081	11,770.90	0.00	0.00	0.00
BHL - PTB 18458.00 'MD (87' FSL - 575' FEL) Sec 11													

Design Annotations					
Measured Depth (usft)	Vertical Depth (usft)	Local Coordinates +N/-S (usft)	+E/-W (usft)	Comment	
100.00	100.00	-0.09	0.24	SHL 1386' FSL & 2079' FWL (Sec 35)	
8,018.67	6,969.70	-1,377.06	2,892.50	Cross Section Line 8018.67 'MD (0' FNL - 324' FEL) Sec 02	
8,095.85	6,986.49	-1,452.30	2,890.40	Cross Hard Line 8095.85 'MD (75' FNL - 325' FEL) Sec 02	
13,235.08	7,044.00	-6,585.84	2,888.26	Cross Section Line 13235.08 'MD (0' FNL - 284' FEL) Sec 11	
18,405.00	7,026.09	-11,720.70	2,634.82	Last Survey 18405.00 'MD	
18,458.00	7,024.87	-11,770.90	2,617.88	BHL - PTB 18458.00 'MD (87' FSL - 575' FEL) Sec 11	

Checked By: _____ Approved By: _____ Date: _____