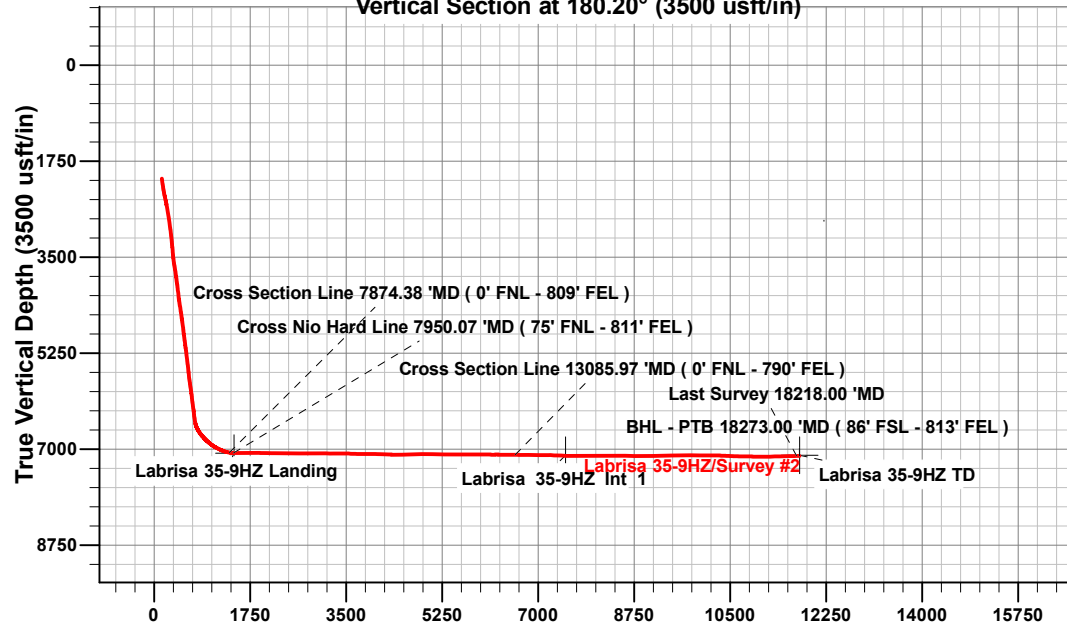


Vertical Section at 180.20° (3500 usft/in)



ANNOTATIONS

MD	Inc	Azi	TVD	+N/-S	+E/-W	Vsect	Departure	Annotation
7874.38	80.46	180.13	7061.93	-1378.63	2422.76	1370.17	2571.10	Cross Section Line 7874.38 'MD (0' FNL - 809' FEL)
7950.07	88.47	183.12	7069.22	-1453.87	2420.59	1445.41	2646.41	Cross Nio Hard Line 7950.07 'MD (75' FNL - 811' FEL)
13085.97	89.67	180.35	7101.82	-6587.43	2396.89	6579.03	7781.43	Cross Section Line 13085.97 'MD (0' FNL - 790' FEL)
18218.00	92.33	179.88	7122.93	-11717.58	2394.13	11709.15	12912.19	Last Survey 18218.00 'MD
18273.00	92.33	179.88	7120.69	-11772.53	2394.24	11764.11	12967.14	BHL - PTB 18273.00 'MD (86' FSL - 813' FEL)

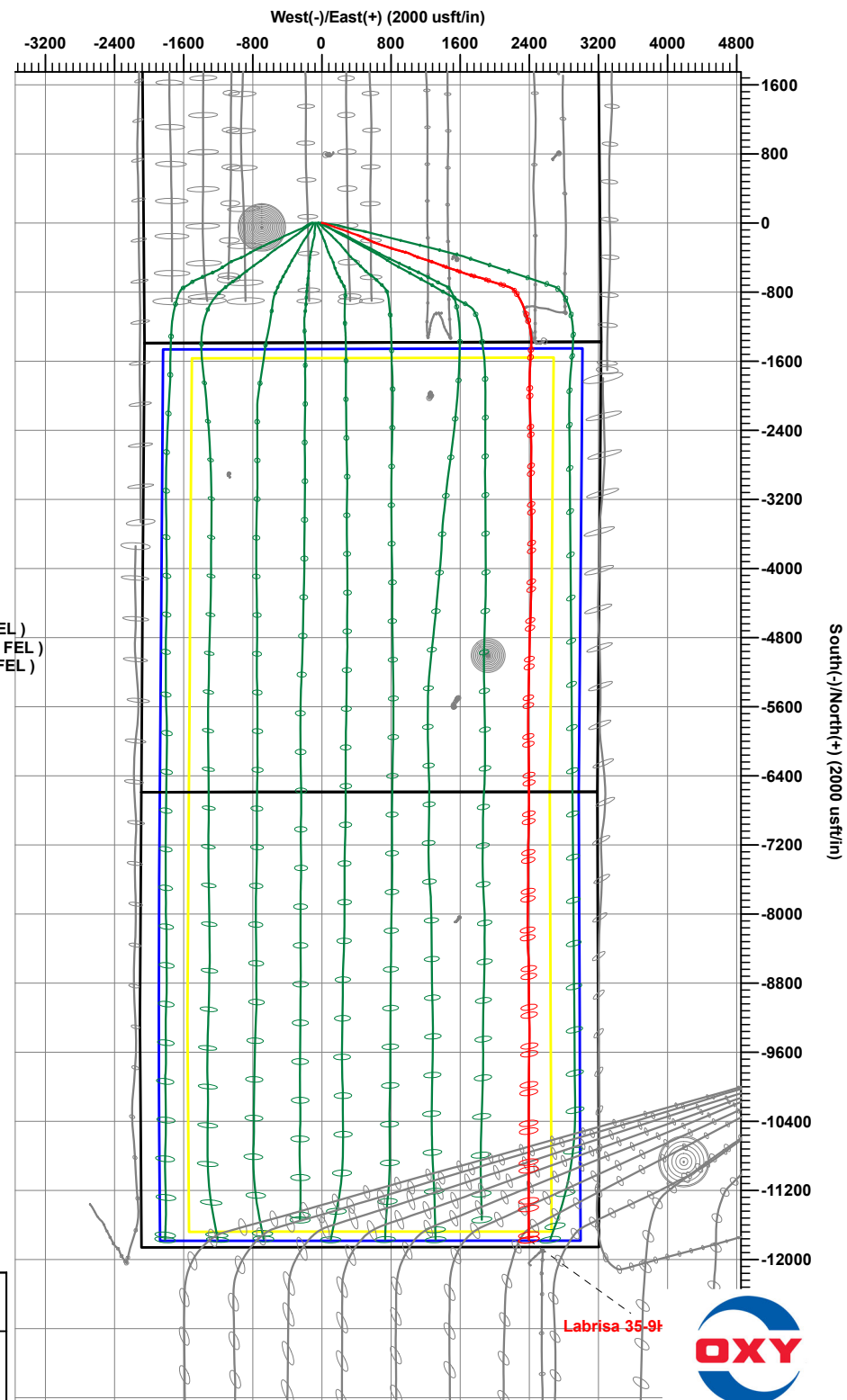
Project: Weld County, CO (UTM-NAD83)
 Site: 2N-65W-35 (Labrisa Pad)
 Well: Labrisa 35-9HZ
 Wellbore: OH
 Design: OH

FORMATION TOP DETAILS

CASING DETAILS				VDPPath	MDPath	Formation
TVD	MD	Name	Size	4032.00	4269.64	PKMN
2036.00	2099.54	9 5/8"	9-5/8	4389.00	4657.64	SSSX
7111.00	18283.81	Prod Csg	5-1/2	6895.00	7441.03	SSPG
				6929.00	7497.13	NBRR
				7017.00	7680.63	N470_B_CK
				7090.00	10611.82	N700_C_CK

DESIGN TARGET DETAILS

Name	TVD	+N/-S	+E/-W	Northing	Easting	Latitude	Longitude
Labrisa 35-9HZ Int 1	7110.80	-7508.42	2398.82	14552693.71	1745483.48	40.0706827	-104.6244426
Labrisa 35-9HZ Landing	7073.90	-1464.13	2420.22	14558738.03	1745479.95	40.0872810	-104.6243640
Labrisa 35-9HZ TD	7111.00	-11773.21	2383.71	14548428.89	1745485.97	40.0589710	-104.6244980



Occidental Petroleum

Weld County, CO (UTM-NAD83)

2N-65W-35 (Labrisa Pad)

Labrisa 35-9HZ

OH

OH



Standard Survey Report

10 March, 2024

Total Report Version 1.60

COMPASS 5000.16 Build 97

Survey Report

Company:	Occidental Petroleum	Local Co-ordinate Reference:	Well Labrisa 35-9HZ
Project:	Weld County, CO (UTM-NAD83)	TVD Reference:	4970' GL + 26' KB @ 4996.00usft
Site:	2N-65W-35 (Labrisa Pad)	MD Reference:	4970' GL + 26' KB @ 4996.00usft
Well:	Labrisa 35-9HZ	North Reference:	True
Wellbore:	OH	Survey Calculation Method:	Minimum Curvature
Design:	OH	Database:	.Total Directional Production DB

Project	Weld County, CO (UTM-NAD83)		
Map System:	Universal Transverse Mercator (US Survey Feet)	System Datum:	Ground Level
Geo Datum:	North American Datum 1983		
Map Zone:	Zone 13N (108 W to 102 W)		

Site	2N-65W-35 (Labrisa Pad)		
Site Position:		Northing:	14,560,192.78 usft
From:	Map	Easting:	1,742,933.63 usft
Position Uncertainty:	0.00 usft	Slot Radius:	13-3/16 "
		Latitude:	40.0913051
		Longitude:	-104.6334463

Well	Labrisa 35-9HZ		
Well Position	+N/-S	0.00 usft	Northing:
	+E/-W	0.00 usft	Easting:
Position Uncertainty	3.28 usft	Wellhead Elevation:	usft
Grid Convergence:	0.24 °		
		Latitude:	40.0913020
		Longitude:	-104.6330170
		Ground Level:	4,970.00 usft

Wellbore	OH		
Magnetics	Model Name	Sample Date	Declination
	HDGM2024	3/5/2024	(°)
			7.73
		Dip Angle	(°)
		66.23	
		Field Strength	(nT)
			51,464.90000000

Design	OH		
Audit Notes:			
Version:	1.0	Phase:	ACTUAL
Vertical Section:	Depth From (TVD)	+N/-S	+E/-W
	(usft)	(usft)	(usft)
	0.00	0.00	0.00
		Direction	(°)
			180.20
		Tie On Depth:	0.00

Survey Program	Date	3/10/2024		
From	To	Survey (Wellbore)	Tool Name	Description
(usft)	(usft)			
89.00	2,135.00	OH (OH)	APC_ISCWSA REV 2 MWD+ Fixed:v2:crustal field declination	
2,210.00	18,273.00	Survey #2 (OH)	MWD+IFR1+SAG+MS_Rev ! ISCWSA MWD + IFR1 + Sag Correction + Multi-Station	

Survey													
Measured Depth	INC	AZI	Vertical Depth	Local Coordinates		Map Coordinates		Geo Coordinates		Vertical Section	Dogleg Rate	Build Rate	Turn Rate
(usft)	(°)	(°)	(usft)	+N/-S	+E/-W	Northing	Easting	Latitude	Longitude	(usft)	(°/100usft)	(°/100usft)	(°/100usft)
				(usft)	(usft)	(usft)	(usft)	(°)	(°)				
0.00	0.00	0.00	0.00	0.00	0.00	14,560,192.17	1,743,053.71	40.0913020	-104.6330170	0.00	0.00	0.00	0.00
89.00	0.51	291.41	89.00	0.14	-0.37	14,560,192.31	1,743,053.34	40.0913024	-104.6330183	-0.14	0.57	0.57	0.00
100.00	0.49	293.17	100.00	0.18	-0.46	14,560,192.35	1,743,053.26	40.0913025	-104.6330186	-0.18	0.26	-0.22	16.02
SHL 1386' FSL & 2064' FWL Sec 35													
181.00	0.33	313.65	181.00	0.48	-0.94	14,560,192.64	1,743,052.77	40.0913033	-104.6330203	-0.47	0.26	-0.19	25.28
272.00	0.22	299.72	272.00	0.74	-1.28	14,560,192.91	1,743,052.43	40.0913041	-104.6330216	-0.74	0.14	-0.12	-15.31

Survey Report

Company:	Occidental Petroleum	Local Co-ordinate Reference:	Well Labrisa 35-9HZ
Project:	Weld County, CO (UTM-NAD83)	TVD Reference:	4970' GL + 26' KB @ 4996.00usft
Site:	2N-65W-35 (Labrisa Pad)	MD Reference:	4970' GL + 26' KB @ 4996.00usft
Well:	Labrisa 35-9HZ	North Reference:	True
Wellbore:	OH	Survey Calculation Method:	Minimum Curvature
Design:	OH	Database:	.Total Directional Production DB

Survey													
Measured Depth (usft)	INC (°)	AZI (°)	Vertical Depth (usft)	Local Coordinates		Map Coordinates		Geo Coordinates		Vertical Section (usft)	Dogleg Rate (°/100usft)	Build Rate (°/100usft)	Turn Rate (°/100usft)
				+N/-S (usft)	+E/-W (usft)	Northing (usft)	Easting (usft)	Latitude (°)	Longitude (°)				
363.00	0.93	130.52	362.99	0.35	-0.87	14,560,192.52	1,743,052.84	40.0913030	-104.6330201	-0.35	1.26	0.78	-185.93
452.00	2.80	103.25	451.94	-0.62	1.79	14,560,191.56	1,743,055.51	40.0913003	-104.6330106	0.61	2.27	2.10	-30.64
542.00	4.62	95.89	541.75	-1.49	7.54	14,560,190.71	1,743,061.26	40.0912979	-104.6329900	1.47	2.09	2.02	-8.18
631.00	6.65	104.82	630.32	-3.18	16.09	14,560,189.06	1,743,069.81	40.0912933	-104.6329595	3.12	2.48	2.28	10.03
721.00	7.92	103.93	719.59	-6.00	27.14	14,560,186.28	1,743,080.88	40.0912855	-104.6329199	5.91	1.42	1.41	-0.99
810.00	8.48	107.74	807.68	-9.48	39.34	14,560,182.85	1,743,093.10	40.0912760	-104.6328763	9.34	0.88	0.63	4.28
900.00	9.37	108.56	896.59	-13.83	52.61	14,560,178.55	1,743,106.38	40.0912640	-104.6328289	13.65	1.00	0.99	0.91
989.00	11.22	110.56	984.15	-19.18	67.59	14,560,173.27	1,743,121.38	40.0912494	-104.6327753	18.95	2.12	2.08	2.25
1,079.00	12.28	110.88	1,072.27	-25.67	84.73	14,560,166.85	1,743,138.55	40.0912315	-104.6327140	25.37	1.18	1.18	0.36
1,168.00	13.28	108.85	1,159.06	-32.34	103.25	14,560,160.25	1,743,157.09	40.0912132	-104.6326478	31.98	1.23	1.12	-2.28
1,258.00	14.73	109.98	1,246.38	-39.59	123.78	14,560,153.09	1,743,177.66	40.0911933	-104.6325744	39.16	1.64	1.61	1.26
1,347.00	15.71	111.20	1,332.26	-47.82	145.65	14,560,144.95	1,743,199.56	40.0911707	-104.6324962	47.31	1.16	1.10	1.37
1,437.00	16.57	110.19	1,418.71	-56.65	169.06	14,560,136.22	1,743,223.00	40.0911465	-104.6324125	56.06	1.01	0.96	-1.12
1,526.00	18.79	108.94	1,503.50	-65.69	194.53	14,560,127.29	1,743,248.51	40.0911216	-104.6323214	65.01	2.53	2.49	-1.40
1,616.00	20.62	107.65	1,588.23	-75.20	223.34	14,560,117.90	1,743,277.36	40.0910955	-104.6322184	74.42	2.09	2.03	-1.43
1,705.00	22.45	108.51	1,671.01	-85.34	254.39	14,560,107.88	1,743,308.46	40.0910677	-104.6321074	84.46	2.09	2.06	0.97
1,795.00	22.88	110.29	1,754.06	-96.87	287.10	14,560,096.49	1,743,341.21	40.0910360	-104.6319905	95.86	0.90	0.48	1.98
1,884.00	22.10	110.39	1,836.29	-108.70	319.02	14,560,084.79	1,743,373.18	40.0910035	-104.6318763	107.59	0.88	-0.88	0.11
1,974.00	22.63	109.79	1,919.52	-120.46	351.18	14,560,073.16	1,743,405.39	40.0909712	-104.6317613	119.23	0.64	0.59	-0.67
2,063.00	21.16	109.17	2,002.10	-131.53	382.47	14,560,062.22	1,743,436.72	40.0909408	-104.6316495	130.20	1.67	-1.65	-0.70
2,135.00	24.11	109.12	2,068.55	-140.62	408.64	14,560,053.24	1,743,462.93	40.0909159	-104.6315559	139.19	4.10	4.10	-0.07
2,210.00	23.14	110.86	2,137.26	-150.89	436.89	14,560,043.09	1,743,491.22	40.0908877	-104.6314549	149.36	1.59	-1.29	2.32
2,300.00	22.21	110.94	2,220.31	-163.26	469.30	14,560,030.85	1,743,523.68	40.0908537	-104.6313390	161.62	1.03	-1.03	0.09
2,389.00	22.83	115.55	2,302.53	-176.72	500.59	14,560,017.52	1,743,555.03	40.0908167	-104.6312271	174.97	2.10	0.70	5.18
2,479.00	24.70	118.37	2,384.89	-193.19	532.89	14,560,001.18	1,743,587.40	40.0907715	-104.6311116	191.33	2.43	2.08	3.13
2,568.00	26.84	116.23	2,465.04	-210.91	567.28	14,559,983.61	1,743,621.86	40.0907228	-104.6309887	208.93	2.62	2.40	-2.40
2,658.00	28.33	110.06	2,544.82	-227.22	605.58	14,559,967.45	1,743,660.22	40.0906780	-104.6308518	225.10	3.58	1.66	-6.86
2,747.00	27.80	110.10	2,623.36	-241.59	644.90	14,559,953.24	1,743,699.61	40.0906386	-104.6307111	239.34	0.60	-0.60	0.04
2,837.00	27.10	108.72	2,703.22	-255.38	684.03	14,559,939.61	1,743,738.79	40.0906007	-104.6305713	252.99	1.05	-0.78	-1.53
2,926.00	26.33	108.28	2,782.72	-268.08	721.97	14,559,927.07	1,743,776.78	40.0905658	-104.6304356	265.56	0.89	-0.87	-0.49
3,039.00	25.34	107.44	2,884.43	-283.19	768.84	14,559,912.16	1,743,823.71	40.0905243	-104.6302680	280.50	0.93	-0.88	-0.74
3,128.00	24.40	107.57	2,965.17	-294.45	804.53	14,559,901.05	1,743,859.45	40.0904934	-104.6301404	291.64	1.06	-1.06	0.15
3,218.00	23.57	106.56	3,047.40	-305.19	839.50	14,559,890.45	1,743,894.47	40.0904639	-104.6300154	302.26	1.03	-0.92	-1.12
3,307.00	22.63	105.44	3,129.27	-314.82	873.07	14,559,880.96	1,743,928.07	40.0904375	-104.6298954	311.77	1.17	-1.06	-1.26
3,397.00	21.51	105.01	3,212.67	-323.70	905.69	14,559,872.21	1,743,960.74	40.0904131	-104.6297787	320.54	1.26	-1.24	-0.48
3,486.00	20.23	105.42	3,295.83	-332.02	936.29	14,559,864.02	1,743,991.36	40.0903902	-104.6296693	328.75	1.45	-1.44	0.46
3,576.00	19.00	105.27	3,380.61	-340.02	965.42	14,559,856.14	1,744,020.53	40.0903683	-104.6295652	336.64	1.37	-1.37	-0.17
3,665.00	17.45	105.23	3,465.14	-347.34	992.28	14,559,848.93	1,744,047.42	40.0903482	-104.6294691	343.87	1.74	-1.74	-0.04

Survey Report

Company:	Occidental Petroleum	Local Co-ordinate Reference:	Well Labrisa 35-9HZ
Project:	Weld County, CO (UTM-NAD83)	TVD Reference:	4970' GL + 26' KB @ 4996.00usft
Site:	2N-65W-35 (Labrisa Pad)	MD Reference:	4970' GL + 26' KB @ 4996.00usft
Well:	Labrisa 35-9HZ	North Reference:	True
Wellbore:	OH	Survey Calculation Method:	Minimum Curvature
Design:	OH	Database:	.Total Directional Production DB

Survey													
Measured Depth (usft)	INC (°)	AZI (°)	Vertical Depth (usft)	Local Coordinates +N/-S (usft)	Local Coordinates +E/-W (usft)	Map Coordinates Northing (usft)	Map Coordinates Easting (usft)	Geo Coordinates Latitude (°)	Geo Coordinates Longitude (°)	Vertical Section (usft)	Dogleg Rate (°/100usft)	Build Rate (°/100usft)	Turn Rate (°/100usft)
3,755.00	17.59	114.23	3,550.98	-356.46	1,017.70	14,559,839.91	1,744,072.88	40.0903231	-104.6293782	352.91	3.01	0.16	10.00
3,845.00	20.01	116.51	3,636.17	-368.92	1,043.89	14,559,827.56	1,744,099.11	40.0902889	-104.6292846	365.27	2.81	2.69	2.53
3,934.00	22.98	113.89	3,718.98	-382.76	1,073.41	14,559,813.85	1,744,128.69	40.0902509	-104.6291791	379.01	3.51	3.34	-2.94
4,024.00	23.72	109.17	3,801.61	-395.82	1,106.57	14,559,800.92	1,744,161.91	40.0902150	-104.6290605	391.95	2.23	0.82	-5.24
4,114.00	22.42	108.52	3,884.41	-407.21	1,139.94	14,559,789.66	1,744,195.33	40.0901837	-104.6289412	403.23	1.47	-1.44	-0.72
4,203.00	23.75	108.76	3,966.28	-418.37	1,173.01	14,559,778.64	1,744,228.44	40.0901531	-104.6288229	414.27	1.50	1.49	0.27
4,292.00	22.52	107.89	4,048.12	-429.37	1,206.20	14,559,767.78	1,744,261.68	40.0901229	-104.6287043	425.16	1.43	-1.38	-0.98
4,382.00	21.95	107.38	4,131.43	-439.69	1,238.66	14,559,757.60	1,744,294.17	40.0900945	-104.6285882	435.36	0.67	-0.63	-0.57
4,472.00	20.93	106.74	4,215.20	-449.34	1,270.10	14,559,748.07	1,744,325.66	40.0900680	-104.6284758	444.91	1.16	-1.13	-0.71
4,561.00	22.83	109.83	4,297.79	-459.78	1,301.57	14,559,737.76	1,744,357.17	40.0900393	-104.6283633	455.23	2.50	2.13	3.47
4,651.00	24.66	111.51	4,380.17	-472.59	1,335.47	14,559,725.10	1,744,391.12	40.0900042	-104.6282421	467.92	2.17	2.03	1.87
4,740.00	24.11	110.73	4,461.23	-485.83	1,369.74	14,559,711.99	1,744,425.45	40.0899678	-104.6281196	481.05	0.72	-0.62	-0.88
4,830.00	22.85	110.20	4,543.78	-498.37	1,403.34	14,559,699.59	1,744,459.09	40.0899333	-104.6279994	493.47	1.42	-1.40	-0.59
4,919.00	21.72	109.76	4,626.13	-509.91	1,435.05	14,559,688.19	1,744,490.86	40.0899017	-104.6278860	504.89	1.28	-1.27	-0.49
5,009.00	23.62	108.94	4,709.17	-521.39	1,467.78	14,559,676.84	1,744,523.63	40.0898701	-104.6277690	516.26	2.14	2.11	-0.91
5,099.00	22.95	107.72	4,791.84	-532.58	1,501.55	14,559,665.79	1,744,557.45	40.0898394	-104.6276483	527.34	0.92	-0.74	-1.36
5,188.00	20.99	106.10	4,874.37	-542.29	1,533.40	14,559,656.22	1,744,589.34	40.0898127	-104.6275344	536.93	2.30	-2.20	-1.82
5,278.00	21.72	111.80	4,958.20	-552.94	1,564.35	14,559,645.69	1,744,620.33	40.0897835	-104.6274238	547.48	2.44	0.81	6.33
5,367.00	19.74	108.86	5,041.44	-563.92	1,593.87	14,559,634.83	1,744,649.89	40.0897533	-104.6273182	558.35	2.51	-2.22	-3.30
5,457.00	22.18	110.43	5,125.48	-574.76	1,624.18	14,559,624.11	1,744,680.25	40.0897235	-104.6272099	569.09	2.78	2.71	1.74
5,546.00	25.34	107.51	5,206.93	-586.36	1,658.09	14,559,612.66	1,744,714.21	40.0896917	-104.6270886	580.57	3.79	3.55	-3.28
5,636.00	23.15	106.48	5,288.98	-597.17	1,693.43	14,559,601.99	1,744,749.59	40.0896620	-104.6269623	591.26	2.48	-2.43	-1.14
5,726.00	23.10	106.08	5,371.75	-607.08	1,727.36	14,559,592.22	1,744,783.56	40.0896347	-104.6268410	601.05	0.18	-0.06	-0.44
5,816.00	24.07	106.24	5,454.23	-617.11	1,761.94	14,559,582.34	1,744,818.19	40.0896072	-104.6267173	610.95	1.08	1.08	0.18
5,905.00	24.86	104.37	5,535.24	-626.83	1,797.49	14,559,572.77	1,744,853.78	40.0895805	-104.6265902	620.55	1.24	0.89	-2.10
5,995.00	22.48	102.43	5,617.67	-635.23	1,832.63	14,559,564.51	1,744,888.95	40.0895574	-104.6264646	628.82	2.78	-2.64	-2.16
6,084.00	22.48	108.85	5,699.92	-644.39	1,865.35	14,559,555.48	1,744,921.71	40.0895323	-104.6263476	637.87	2.76	0.00	7.21
6,174.00	21.85	111.02	5,783.27	-655.95	1,897.27	14,559,544.05	1,744,953.67	40.0895005	-104.6262335	649.33	1.15	-0.70	2.41
6,263.00	23.66	109.25	5,865.34	-667.78	1,929.59	14,559,532.35	1,744,986.04	40.0894680	-104.6261179	661.04	2.17	2.03	-1.99
6,353.00	25.01	109.14	5,947.34	-679.98	1,964.61	14,559,520.31	1,745,021.12	40.0894345	-104.6259927	673.11	1.50	1.50	-0.12
6,443.00	22.33	106.29	6,029.76	-691.01	1,999.01	14,559,509.41	1,745,055.55	40.0894042	-104.6258697	684.03	3.24	-2.98	-3.17
6,532.00	23.71	106.26	6,111.67	-700.76	2,032.41	14,559,499.80	1,745,089.00	40.0893774	-104.6257503	693.67	1.55	1.55	-0.03
6,622.00	24.53	106.59	6,193.82	-711.17	2,067.69	14,559,489.54	1,745,124.32	40.0893489	-104.6256242	703.94	0.92	0.91	0.37
6,712.00	25.14	108.26	6,275.49	-722.49	2,103.75	14,559,478.37	1,745,160.43	40.0893177	-104.6254952	715.14	1.03	0.68	1.86
6,801.00	20.71	106.93	6,357.44	-733.00	2,136.78	14,559,467.99	1,745,193.50	40.0892889	-104.6253772	725.54	5.01	-4.98	-1.49
6,891.00	21.09	111.58	6,441.53	-743.59	2,167.06	14,559,457.53	1,745,223.82	40.0892598	-104.6252689	736.02	1.89	0.42	5.17
6,980.00	21.89	118.44	6,524.35	-757.38	2,196.54	14,559,443.85	1,745,253.36	40.0892219	-104.6251635	749.71	2.96	0.90	7.71

Survey Report

Company:	Occidental Petroleum	Local Co-ordinate Reference:	Well Labrisa 35-9HZ
Project:	Weld County, CO (UTM-NAD83)	TVD Reference:	4970' GL + 26' KB @ 4996.00usft
Site:	2N-65W-35 (Labrisa Pad)	MD Reference:	4970' GL + 26' KB @ 4996.00usft
Well:	Labrisa 35-9HZ	North Reference:	True
Wellbore:	OH	Survey Calculation Method:	Minimum Curvature
Design:	OH	Database:	.Total Directional Production DB

Survey													
Measured Depth (usft)	INC (°)	AZI (°)	Vertical Depth (usft)	Local Coordinates +N/-S (usft)	+E/-W (usft)	Map Coordinates Northing (usft)	Easting (usft)	Geo Coordinates Latitude (°)	Longitude (°)	Vertical Section (usft)	Dogleg Rate (°/100usft)	Build Rate (°/100usft)	Turn Rate (°/100usft)
7,070.00	30.77	138.77	6,605.10	-782.79	2,226.59	14,559,418.57	1,745,283.51	40.0891521	-104.6250561	775.01	13.94	9.87	22.59
7,159.00	36.96	148.37	6,679.02	-822.76	2,255.68	14,559,378.72	1,745,312.76	40.0890424	-104.6249521	814.88	9.17	6.96	10.79
7,248.00	43.25	150.85	6,747.06	-872.22	2,284.59	14,559,329.38	1,745,341.88	40.0889065	-104.6248487	864.24	7.29	7.07	2.79
7,338.00	47.40	154.29	6,810.33	-929.03	2,314.00	14,559,272.69	1,745,371.52	40.0887505	-104.6247436	920.95	5.35	4.61	3.82
7,428.00	51.14	159.42	6,869.07	-991.73	2,340.70	14,559,210.11	1,745,398.49	40.0885783	-104.6246481	983.55	5.99	4.16	5.70
7,517.00	55.58	161.33	6,922.17	-1,058.98	2,364.65	14,559,142.95	1,745,422.71	40.0883936	-104.6245625	1,050.72	5.28	4.99	2.15
7,607.00	62.09	165.06	6,968.74	-1,132.67	2,386.81	14,559,069.36	1,745,445.18	40.0881913	-104.6244833	1,124.33	8.05	7.23	4.14
7,696.00	65.87	167.73	7,007.78	-1,210.39	2,405.59	14,558,991.72	1,745,464.28	40.0879779	-104.6244162	1,201.98	5.03	4.25	3.00
7,786.00	71.49	174.23	7,040.52	-1,293.12	2,418.63	14,558,909.04	1,745,477.66	40.0877507	-104.6243696	1,284.67	9.18	6.24	7.22
7,874.38	80.46	180.13	7,061.93	-1,378.63	2,422.76	14,558,823.54	1,745,482.14	40.0875158	-104.6243549	1,370.17	12.04	10.15	6.67
Cross Section Line 7874.38 'MD (0' FNL - 809' FEL)													
7,876.00	80.63	180.23	7,062.19	-1,380.23	2,422.76	14,558,821.95	1,745,482.14	40.0875114	-104.6243549	1,371.77	12.04	10.23	6.44
7,950.07	88.47	183.12	7,069.22	-1,453.87	2,420.59	14,558,748.30	1,745,480.28	40.0873092	-104.6243627	1,445.41	11.27	10.58	3.91
Cross Nio Hard Line 7950.07 'MD (75' FNL - 811' FEL)													
7,965.00	90.05	183.70	7,069.42	-1,468.77	2,419.70	14,558,733.39	1,745,479.45	40.0872683	-104.6243658	1,460.31	11.27	10.59	3.87
8,054.00	91.02	183.75	7,068.59	-1,557.58	2,413.92	14,558,644.56	1,745,474.04	40.0870244	-104.6243865	1,549.14	1.09	1.09	0.06
8,144.00	90.26	183.42	7,067.58	-1,647.39	2,408.29	14,558,554.72	1,745,468.78	40.0867778	-104.6244067	1,638.98	0.92	-0.84	-0.37
8,233.00	90.32	181.11	7,067.13	-1,736.32	2,404.77	14,558,465.79	1,745,465.63	40.0865336	-104.6244193	1,727.91	2.60	0.07	-2.60
8,323.00	89.69	180.39	7,067.12	-1,826.31	2,403.60	14,558,375.79	1,745,464.82	40.0862865	-104.6244235	1,817.91	1.06	-0.70	-0.80
8,412.00	89.95	178.95	7,067.40	-1,915.30	2,404.11	14,558,286.80	1,745,465.70	40.0860421	-104.6244217	1,906.90	1.64	0.29	-1.62
8,502.00	88.22	179.47	7,068.84	-2,005.28	2,405.35	14,558,196.83	1,745,467.31	40.0857950	-104.6244173	1,996.87	2.01	-1.92	0.58
8,592.00	88.68	179.24	7,071.27	-2,095.24	2,406.36	14,558,106.87	1,745,468.70	40.0855479	-104.6244137	2,086.83	0.57	0.51	-0.26
8,681.00	89.05	178.66	7,073.04	-2,184.21	2,407.99	14,558,017.91	1,745,470.70	40.0853036	-104.6244080	2,175.79	0.77	0.42	-0.65
8,771.00	88.73	178.30	7,074.78	-2,274.16	2,410.38	14,557,927.97	1,745,473.45	40.0850566	-104.6243994	2,265.73	0.54	-0.36	-0.40
8,860.00	89.25	177.92	7,076.35	-2,363.10	2,413.31	14,557,839.05	1,745,476.75	40.0848124	-104.6243890	2,354.66	0.72	0.58	-0.43
8,950.00	90.77	177.63	7,076.33	-2,453.03	2,416.81	14,557,749.13	1,745,480.62	40.0845654	-104.6243765	2,444.58	1.72	1.69	-0.32
9,039.00	89.45	179.11	7,076.16	-2,541.99	2,419.34	14,557,660.19	1,745,483.52	40.0843211	-104.6243675	2,533.53	2.23	-1.48	1.66
9,129.00	91.36	179.50	7,075.53	-2,631.97	2,420.43	14,557,570.20	1,745,484.98	40.0840740	-104.6243636	2,623.51	2.17	2.12	0.43
9,219.00	89.29	180.48	7,075.02	-2,721.97	2,420.45	14,557,480.21	1,745,485.37	40.0838269	-104.6243636	2,713.50	2.54	-2.30	1.09
9,309.00	89.75	180.67	7,075.77	-2,811.96	2,419.54	14,557,390.22	1,745,484.84	40.0835797	-104.6243669	2,803.50	0.55	0.51	0.21
9,398.00	90.84	180.81	7,075.31	-2,900.95	2,418.39	14,557,301.22	1,745,484.05	40.0833354	-104.6243710	2,892.49	1.23	1.22	0.16
9,487.00	88.78	179.99	7,075.61	-2,989.94	2,417.77	14,557,212.23	1,745,483.80	40.0830910	-104.6243733	2,981.48	2.49	-2.31	-0.92
9,577.00	89.45	180.39	7,077.00	-3,079.93	2,417.47	14,557,122.24	1,745,483.87	40.0828439	-104.6243744	3,071.47	0.87	0.74	0.44
9,666.00	89.04	178.46	7,078.17	-3,168.91	2,418.37	14,557,033.26	1,745,485.13	40.0825995	-104.6243712	3,160.45	2.22	-0.46	-2.17
9,756.00	89.33	178.70	7,079.45	-3,258.87	2,420.60	14,556,943.31	1,745,487.73	40.0823525	-104.6243633	3,250.41	0.42	0.32	0.27
9,845.00	89.86	177.74	7,080.08	-3,347.83	2,423.36	14,556,854.37	1,745,490.86	40.0821082	-104.6243534	3,339.35	1.23	0.60	-1.08
9,935.00	90.75	178.09	7,079.60	-3,437.77	2,426.64	14,556,764.44	1,745,494.51	40.0818612	-104.6243417	3,429.27	1.06	0.99	0.39
10,025.00	88.54	181.16	7,080.16	-3,527.75	2,427.23	14,556,674.47	1,745,495.47	40.0816141	-104.6243397	3,519.25	4.20	-2.46	3.41

Survey Report

Company:	Occidental Petroleum	Local Co-ordinate Reference:	Well Labrisa 35-9HZ
Project:	Weld County, CO (UTM-NAD83)	TVD Reference:	4970' GL + 26' KB @ 4996.00usft
Site:	2N-65W-35 (Labrisa Pad)	MD Reference:	4970' GL + 26' KB @ 4996.00usft
Well:	Labrisa 35-9HZ	North Reference:	True
Wellbore:	OH	Survey Calculation Method:	Minimum Curvature
Design:	OH	Database:	.Total Directional Production DB

Survey													
Measured Depth (usft)	INC (°)	AZI (°)	Vertical Depth (usft)	Local Coordinates +N/-S (usft)	Local Coordinates +E/-W (usft)	Map Coordinates Northing (usft)	Map Coordinates Easting (usft)	Geo Coordinates Latitude (°)	Geo Coordinates Longitude (°)	Vertical Section (usft)	Dogleg Rate (°/100usft)	Build Rate (°/100usft)	Turn Rate (°/100usft)
10,114.00	88.44	180.38	7,082.50	-3,616.71	2,426.03	14,556,585.50	1,745,494.64	40.0813698	-104.6243440	3,608.22	0.88	-0.11	-0.88
10,204.00	88.24	180.51	7,085.11	-3,706.67	2,425.33	14,556,495.54	1,745,494.31	40.0811228	-104.6243465	3,698.18	0.27	-0.22	0.14
10,294.00	89.12	179.97	7,087.18	-3,796.64	2,424.95	14,556,405.57	1,745,494.31	40.0808757	-104.6243479	3,788.15	1.15	0.98	-0.60
10,383.00	89.90	179.89	7,087.95	-3,885.64	2,425.06	14,556,316.57	1,745,494.78	40.0806313	-104.6243475	3,877.15	0.88	0.88	-0.09
10,473.00	90.36	180.27	7,087.74	-3,975.64	2,424.94	14,556,226.57	1,745,495.03	40.0803841	-104.6243480	3,967.15	0.66	0.51	0.42
10,562.00	88.80	180.98	7,088.39	-4,064.62	2,423.97	14,556,137.58	1,745,494.43	40.0801398	-104.6243515	4,056.14	1.93	-1.75	0.80
10,652.00	87.49	180.67	7,091.31	-4,154.57	2,422.67	14,556,047.63	1,745,493.50	40.0798928	-104.6243561	4,146.08	1.50	-1.46	-0.34
10,742.00	87.67	180.85	7,095.11	-4,244.48	2,421.48	14,555,957.72	1,745,492.68	40.0796459	-104.6243604	4,236.00	0.28	0.20	0.20
10,831.00	87.43	180.05	7,098.91	-4,333.39	2,420.78	14,555,868.80	1,745,492.35	40.0794017	-104.6243630	4,324.92	0.94	-0.27	-0.90
10,921.00	89.51	182.13	7,101.31	-4,423.33	2,419.07	14,555,778.85	1,745,491.01	40.0791547	-104.6243691	4,414.86	3.27	2.31	2.31
11,011.00	90.92	182.86	7,100.98	-4,513.25	2,415.15	14,555,688.93	1,745,487.46	40.0789078	-104.6243832	4,504.79	1.76	1.57	0.81
11,100.00	91.72	182.30	7,098.93	-4,602.13	2,411.14	14,555,600.03	1,745,483.82	40.0786637	-104.6243975	4,593.69	1.10	0.90	-0.63
11,190.00	93.12	181.89	7,095.13	-4,691.99	2,407.86	14,555,510.16	1,745,480.91	40.0784170	-104.6244093	4,683.55	1.62	1.56	-0.46
11,279.00	90.77	181.41	7,092.11	-4,780.89	2,405.30	14,555,421.24	1,745,478.71	40.0781728	-104.6244185	4,772.47	2.69	-2.64	-0.54
11,369.00	89.57	181.52	7,091.84	-4,870.86	2,403.00	14,555,331.26	1,745,476.78	40.0779258	-104.6244267	4,862.44	1.34	-1.33	0.12
11,459.00	90.66	180.73	7,091.66	-4,960.84	2,401.23	14,555,241.28	1,745,475.39	40.0776787	-104.6244331	4,952.43	1.50	1.21	-0.88
11,548.00	89.72	181.02	7,091.36	-5,049.83	2,399.87	14,555,152.28	1,745,474.39	40.0774343	-104.6244380	5,041.42	1.11	-1.06	0.33
11,638.00	88.68	181.62	7,092.62	-5,139.80	2,397.80	14,555,062.31	1,745,472.69	40.0771872	-104.6244454	5,131.39	1.33	-1.16	0.67
11,727.00	88.96	181.36	7,094.45	-5,228.75	2,395.48	14,554,973.35	1,745,470.75	40.0769430	-104.6244537	5,220.35	0.43	0.31	-0.29
11,817.00	89.31	181.65	7,095.81	-5,318.71	2,393.12	14,554,883.38	1,745,468.75	40.0766959	-104.6244622	5,310.32	0.51	0.39	0.32
11,907.00	90.75	181.95	7,095.76	-5,408.66	2,390.29	14,554,793.42	1,745,466.30	40.0764489	-104.6244723	5,400.28	1.63	1.60	0.33
11,996.00	89.08	180.38	7,095.90	-5,497.63	2,388.48	14,554,704.44	1,745,464.86	40.0762046	-104.6244788	5,489.26	2.58	-1.88	-1.76
12,086.00	90.12	180.08	7,096.52	-5,587.63	2,388.12	14,554,614.44	1,745,464.87	40.0759574	-104.6244801	5,579.26	1.20	1.16	-0.33
12,175.00	89.05	181.01	7,097.17	-5,676.62	2,387.28	14,554,525.45	1,745,464.39	40.0757130	-104.6244832	5,668.25	1.59	-1.20	1.04
12,265.00	90.02	180.11	7,097.90	-5,766.61	2,386.40	14,554,435.45	1,745,463.88	40.0754659	-104.6244864	5,758.25	1.47	1.08	-1.00
12,355.00	91.27	179.83	7,096.89	-5,856.60	2,386.44	14,554,345.46	1,745,464.30	40.0752188	-104.6244862	5,848.24	1.42	1.39	-0.31
12,444.00	89.19	178.91	7,096.53	-5,945.59	2,387.42	14,554,256.48	1,745,465.64	40.0749744	-104.6244828	5,937.22	2.56	-2.34	-1.03
12,534.00	89.90	178.75	7,097.24	-6,035.57	2,389.26	14,554,166.51	1,745,467.85	40.0747273	-104.6244762	6,027.19	0.81	0.79	-0.18
12,624.00	88.45	179.51	7,098.54	-6,125.55	2,390.63	14,554,076.54	1,745,469.59	40.0744802	-104.6244714	6,117.16	1.82	-1.61	0.84
12,713.00	90.82	178.67	7,099.11	-6,214.53	2,392.04	14,553,987.56	1,745,471.37	40.0742359	-104.6244664	6,206.14	2.83	2.66	-0.94
12,803.00	88.97	179.17	7,099.27	-6,304.51	2,393.74	14,553,897.59	1,745,473.44	40.0739888	-104.6244603	6,296.11	2.13	-2.06	0.56
12,892.00	90.17	178.80	7,099.94	-6,393.49	2,395.31	14,553,808.62	1,745,475.38	40.0737444	-104.6244547	6,385.09	1.41	1.35	-0.42
12,982.00	88.83	179.38	7,100.72	-6,483.47	2,396.74	14,553,718.64	1,745,477.18	40.0734973	-104.6244496	6,475.07	1.62	-1.49	0.64
13,072.00	89.85	180.33	7,101.76	-6,573.46	2,396.97	14,553,628.65	1,745,477.78	40.0732502	-104.6244489	6,565.06	1.55	1.13	1.06
13,085.97	89.67	180.35	7,101.82	-6,587.43	2,396.89	14,553,614.68	1,745,477.75	40.0732118	-104.6244492	6,579.03	1.32	-1.31	0.13
Cross Section Line 13085.97 'MD (0' FNL - 790' FEL)													
13,161.00	88.68	180.45	7,102.90	-6,662.45	2,396.36	14,553,539.66	1,745,477.54	40.0730058	-104.6244510	6,654.05	1.32	-1.31	0.13
13,251.00	90.69	180.49	7,103.40	-6,752.44	2,395.63	14,553,449.67	1,745,477.17	40.0727587	-104.6244537	6,744.04	2.23	2.23	0.04

Survey Report

Company:	Occidental Petroleum	Local Co-ordinate Reference:	Well Labrisa 35-9HZ
Project:	Weld County, CO (UTM-NAD83)	TVD Reference:	4970' GL + 26' KB @ 4996.00usft
Site:	2N-65W-35 (Labrisa Pad)	MD Reference:	4970' GL + 26' KB @ 4996.00usft
Well:	Labrisa 35-9HZ	North Reference:	True
Wellbore:	OH	Survey Calculation Method:	Minimum Curvature
Design:	OH	Database:	.Total Directional Production DB

Survey													
Measured Depth (usft)	INC (°)	AZI (°)	Vertical Depth (usft)	Local Coordinates +N/-S (usft)	+E/-W (usft)	Map Coordinates Northing (usft)	Easting (usft)	Geo Coordinates Latitude (°)	Longituge (°)	Vertical Section (usft)	Dogleg Rate (°/100usft)	Build Rate (°/100usft)	Turn Rate (°/100usft)
13,340.00	88.41	181.41	7,104.10	-6,841.42	2,394.15	14,553,360.68	1,745,476.07	40.0725144	-104.6244590	6,833.02	2.76	-2.56	1.03
13,430.00	89.55	180.97	7,105.70	-6,931.39	2,392.28	14,553,270.71	1,745,474.57	40.0722673	-104.6244657	6,922.99	1.36	1.27	-0.49
13,519.00	88.95	180.90	7,106.86	-7,020.37	2,390.83	14,553,181.73	1,745,473.48	40.0720230	-104.6244709	7,011.98	0.68	-0.67	-0.08
13,609.00	90.63	181.13	7,107.19	-7,110.35	2,389.23	14,553,091.74	1,745,472.26	40.0717759	-104.6244767	7,101.96	1.88	1.87	0.26
13,698.00	87.34	180.20	7,108.77	-7,199.31	2,388.20	14,553,002.77	1,745,471.59	40.0715315	-104.6244804	7,190.93	3.84	-3.70	-1.04
13,788.00	87.29	179.81	7,112.99	-7,289.22	2,388.19	14,552,912.87	1,745,471.96	40.0712847	-104.6244805	7,280.83	0.44	-0.06	-0.43
13,878.00	88.38	180.64	7,116.39	-7,379.15	2,387.84	14,552,822.94	1,745,471.97	40.0710377	-104.6244818	7,370.77	1.52	1.21	0.92
13,967.00	88.34	180.06	7,118.93	-7,468.11	2,387.30	14,552,733.97	1,745,471.80	40.0707934	-104.6244837	7,459.73	0.65	-0.04	-0.65
14,057.00	89.01	180.02	7,121.01	-7,558.09	2,387.23	14,552,644.00	1,745,472.11	40.0705463	-104.6244840	7,549.71	0.75	0.74	-0.04
14,147.00	89.66	180.11	7,122.06	-7,648.08	2,387.13	14,552,554.00	1,745,472.38	40.0702992	-104.6244844	7,639.70	0.73	0.72	0.10
14,237.00	89.88	180.87	7,122.42	-7,738.07	2,386.36	14,552,464.01	1,745,471.98	40.0700520	-104.6244872	7,729.70	0.88	0.24	0.84
14,326.00	91.12	181.50	7,121.64	-7,827.05	2,384.52	14,552,375.02	1,745,470.50	40.0698077	-104.6244938	7,818.68	1.56	1.39	0.71
14,416.00	90.03	181.45	7,120.74	-7,917.01	2,382.21	14,552,285.05	1,745,468.56	40.0695606	-104.6245021	7,908.65	1.21	-1.21	-0.06
14,506.00	90.69	180.64	7,120.18	-8,007.00	2,380.56	14,552,195.06	1,745,467.29	40.0693135	-104.6245080	7,998.64	1.16	0.73	-0.90
14,595.00	91.54	180.54	7,118.44	-8,095.97	2,379.65	14,552,106.08	1,745,466.74	40.0690692	-104.6245113	8,087.62	0.96	0.96	-0.11
14,685.00	89.55	179.08	7,117.59	-8,185.96	2,379.95	14,552,016.10	1,745,467.41	40.0688221	-104.6245102	8,177.60	2.74	-2.21	-1.62
14,775.00	90.24	179.40	7,117.75	-8,275.95	2,381.14	14,551,926.11	1,745,468.97	40.0685750	-104.6245060	8,267.59	0.85	0.77	0.36
14,864.00	89.76	178.21	7,117.75	-8,364.93	2,383.00	14,551,837.14	1,745,471.20	40.0683306	-104.6244994	8,356.56	1.44	-0.54	-1.34
14,954.00	89.05	177.15	7,118.69	-8,454.85	2,386.64	14,551,747.24	1,745,475.21	40.0680837	-104.6244864	8,446.47	1.42	-0.79	-1.18
15,044.00	90.54	176.72	7,119.01	-8,544.72	2,391.45	14,551,657.39	1,745,480.39	40.0678369	-104.6244692	8,536.32	1.72	1.66	-0.48
15,133.00	88.64	180.27	7,119.65	-8,633.67	2,393.79	14,551,568.45	1,745,483.10	40.0675926	-104.6244609	8,625.26	4.52	-2.13	3.99
15,223.00	88.66	179.91	7,121.77	-8,723.64	2,393.65	14,551,478.48	1,745,483.33	40.0673455	-104.6244614	8,715.23	0.40	0.02	-0.40
15,313.00	88.75	179.20	7,123.80	-8,813.62	2,394.35	14,551,388.51	1,745,484.40	40.0670985	-104.6244590	8,805.20	0.80	0.10	-0.79
15,402.00	88.97	179.24	7,125.57	-8,902.59	2,395.56	14,551,299.54	1,745,485.98	40.0668541	-104.6244547	8,894.17	0.25	0.25	0.04
15,492.00	90.52	180.14	7,125.97	-8,992.58	2,396.04	14,551,209.55	1,745,486.83	40.0666070	-104.6244530	8,984.17	1.99	1.72	1.00
15,581.00	91.19	179.38	7,124.64	-9,081.57	2,396.42	14,551,120.56	1,745,487.57	40.0663626	-104.6244517	9,073.15	1.14	0.75	-0.85
15,671.00	91.94	178.99	7,122.19	-9,171.53	2,397.70	14,551,030.61	1,745,489.22	40.0661156	-104.6244471	9,163.10	0.94	0.83	-0.43
15,760.00	92.63	178.37	7,118.64	-9,260.43	2,399.75	14,550,941.72	1,745,491.64	40.0658714	-104.6244398	9,252.00	1.04	0.78	-0.70
15,850.00	90.10	180.01	7,116.49	-9,350.39	2,401.02	14,550,851.77	1,745,493.28	40.0656244	-104.6244353	9,341.95	3.35	-2.81	1.82
15,940.00	90.79	180.22	7,115.79	-9,440.39	2,400.84	14,550,761.77	1,745,493.47	40.0653773	-104.6244360	9,431.95	0.80	0.77	0.23
16,029.00	92.72	180.69	7,113.07	-9,529.34	2,400.13	14,550,672.82	1,745,493.13	40.0651330	-104.6244385	9,520.90	2.23	2.17	0.53
16,119.00	89.31	181.48	7,111.47	-9,619.29	2,398.43	14,550,582.85	1,745,491.80	40.0648860	-104.6244447	9,610.86	3.89	-3.79	0.88
16,208.00	89.52	181.07	7,112.38	-9,708.27	2,396.45	14,550,493.87	1,745,490.19	40.0646416	-104.6244518	9,699.84	0.52	0.24	-0.46
16,298.00	89.54	179.94	7,113.12	-9,798.26	2,395.65	14,550,403.88	1,745,489.76	40.0643945	-104.6244546	9,789.84	1.26	0.02	-1.26
16,388.00	90.08	179.94	7,113.42	-9,888.26	2,395.75	14,550,313.88	1,745,490.23	40.0641474	-104.6244543	9,879.83	0.60	0.60	0.00
16,477.00	89.53	181.11	7,113.72	-9,977.25	2,394.93	14,550,224.89	1,745,489.78	40.0639030	-104.6244573	9,968.83	1.45	-0.62	1.31
16,567.00	89.81	180.24	7,114.24	-10,067.24	2,393.87	14,550,134.89	1,745,489.09	40.0636558	-104.6244611	10,058.82	1.02	0.31	-0.97

Survey Report

Company:	Occidental Petroleum	Local Co-ordinate Reference:	Well Labrisa 35-9HZ
Project:	Weld County, CO (UTM-NAD83)	TVD Reference:	4970' GL + 26' KB @ 4996.00usft
Site:	2N-65W-35 (Labrisa Pad)	MD Reference:	4970' GL + 26' KB @ 4996.00usft
Well:	Labrisa 35-9HZ	North Reference:	True
Wellbore:	OH	Survey Calculation Method:	Minimum Curvature
Design:	OH	Database:	.Total Directional Production DB

Survey													
Measured Depth (usft)	INC (°)	AZI (°)	Vertical Depth (usft)	+N/-S (usft)	+E/-W (usft)	Northing (usft)	Easting (usft)	Latitude (°)	Longitude (°)	Vertical Section (usft)	Dogleg Rate (°/100usft)	Build Rate (°/100usft)	Turn Rate (°/100usft)
16,656.00	90.66	180.44	7,113.88	-10,156.24	2,393.34	14,550,045.89	1,745,488.93	40.0634114	-104.6244630	10,147.82	0.98	0.96	0.22
16,746.00	88.68	180.64	7,114.39	-10,246.23	2,392.49	14,549,955.90	1,745,488.45	40.0631643	-104.6244661	10,237.81	2.21	-2.20	0.22
16,836.00	88.45	179.68	7,116.65	-10,336.20	2,392.24	14,549,865.93	1,745,488.57	40.0629173	-104.6244670	10,327.79	1.10	-0.26	-1.07
16,925.00	87.67	179.88	7,119.66	-10,425.15	2,392.58	14,549,776.98	1,745,489.28	40.0626730	-104.6244658	10,416.73	0.90	-0.88	0.22
17,015.00	86.08	180.26	7,124.57	-10,515.01	2,392.47	14,549,687.12	1,745,489.54	40.0624262	-104.6244662	10,506.59	1.82	-1.77	0.42
17,105.00	88.02	180.95	7,129.20	-10,604.88	2,391.53	14,549,597.25	1,745,488.97	40.0621794	-104.6244697	10,596.47	2.29	2.16	0.77
17,194.00	89.95	180.34	7,130.78	-10,693.86	2,390.52	14,549,508.27	1,745,488.33	40.0619351	-104.6244733	10,685.45	2.27	2.17	-0.69
17,284.00	89.47	179.36	7,131.23	-10,783.85	2,390.76	14,549,418.27	1,745,488.94	40.0616879	-104.6244725	10,775.44	1.21	-0.53	-1.09
17,374.00	88.39	179.09	7,132.91	-10,873.83	2,391.98	14,549,328.30	1,745,490.53	40.0614409	-104.6244681	10,865.41	1.24	-1.20	-0.30
17,463.00	88.75	180.17	7,135.13	-10,962.80	2,392.55	14,549,239.34	1,745,491.47	40.0611965	-104.6244661	10,954.38	1.28	0.40	1.21
17,553.00	90.69	180.34	7,135.57	-11,052.79	2,392.15	14,549,149.34	1,745,491.44	40.0609494	-104.6244676	11,044.37	2.16	2.16	0.19
17,642.00	90.34	180.26	7,134.77	-11,141.79	2,391.68	14,549,060.35	1,745,491.34	40.0607050	-104.6244693	11,133.37	0.40	-0.39	-0.09
17,732.00	89.90	179.61	7,134.58	-11,231.78	2,391.79	14,548,970.35	1,745,491.81	40.0604579	-104.6244689	11,223.37	0.87	-0.49	-0.72
17,822.00	90.87	180.92	7,133.98	-11,321.78	2,391.37	14,548,880.35	1,745,491.77	40.0602107	-104.6244705	11,313.36	1.81	1.08	1.46
17,911.00	91.79	179.82	7,131.91	-11,410.75	2,390.80	14,548,791.38	1,745,491.56	40.0599664	-104.6244725	11,402.34	1.61	1.03	-1.24
18,001.00	92.70	179.02	7,128.39	-11,500.68	2,391.71	14,548,701.46	1,745,492.84	40.0597195	-104.6244693	11,492.26	1.35	1.01	-0.89
18,090.00	90.45	179.37	7,125.94	-11,589.63	2,392.96	14,548,612.51	1,745,494.46	40.0594752	-104.6244649	11,581.20	2.56	-2.53	0.39
18,180.00	91.69	179.43	7,124.26	-11,679.60	2,393.90	14,548,522.54	1,745,495.77	40.0592281	-104.6244615	11,671.18	1.38	1.38	0.07
18,218.00	92.33	179.88	7,122.93	-11,717.58	2,394.13	14,548,484.57	1,745,496.16	40.0591238	-104.6244607	11,709.15	2.06	1.68	1.18
Last Survey 18218.00 'MD													
18,273.00	92.33	179.88	7,120.69	-11,772.53	2,394.24	14,548,429.61	1,745,496.50	40.0589729	-104.6244603	11,764.11	0.00	0.00	0.00
BHL - PTB 18273.00 'MD (86' FSL - 813' FEL)													

Design Annotations					
Measured Depth (usft)	Vertical Depth (usft)	+N/-S (usft)	+E/-W (usft)	Comment	
100.00	100.00	0.18	-0.46	SHL 1386' FSL & 2064' FWL Sec 35	
7,874.38	7,061.93	-1,378.63	2,422.76	Cross Section Line 7874.38 'MD (0' FNL - 809' FEL)	
7,950.07	7,069.22	-1,453.87	2,420.59	Cross Nio Hard Line 7950.07 'MD (75' FNL - 811' FEL)	
13,085.97	7,101.82	-6,587.43	2,396.89	Cross Section Line 13085.97 'MD (0' FNL - 790' FEL)	
18,218.00	7,122.93	-11,717.58	2,394.13	Last Survey 18218.00 'MD	
18,273.00	7,120.69	-11,772.53	2,394.24	BHL - PTB 18273.00 'MD (86' FSL - 813' FEL)	

Checked By: _____ Approved By: _____ Date: _____