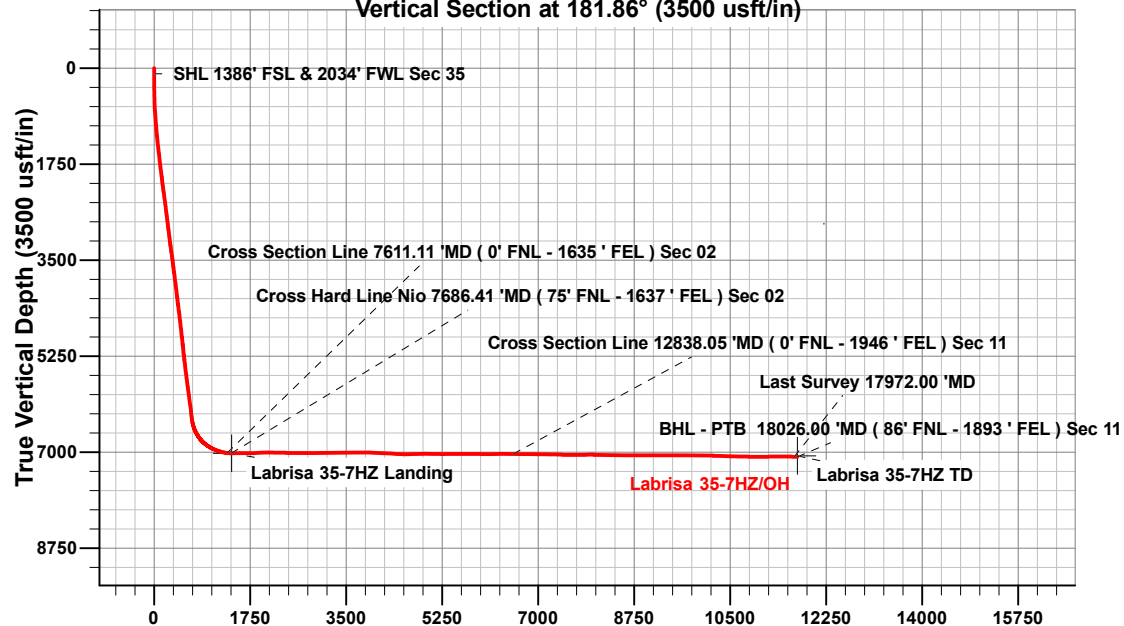


Vertical Section at 181.86° (3500 usft/in)



ANNOTATIONS

MD	Inc	Azi	TVD	+N/-S	+E/-W	VSECT	Departure	Annotation
100.00	0.06	260.00	100.00	0.01	-0.03	-0.01	0.06	SHL 1386' FSL & 2034' FWL Sec 35
7611.11	83.33	181.14	7014.44	-1381.59	1627.24	1328.04	2331.79	Cross Section Line 7611.11 'MD (0' FNL - 1635' FEL) Sec 02
7686.41	89.53	182.82	7019.13	-1456.66	1624.64	1403.16	2406.90	Cross Hard Line Nio 7686.41 'MD (75' FNL - 1637' FEL) Sec 02
12838.05	89.54	180.38	7031.63	-6588.10	1270.88	6543.38	7557.13	Cross Section Line 12838.05 'MD (0' FNL - 1946' FEL) Sec 11
17972.00	89.52	178.11	7082.04	-11718.89	1343.16	11669.12	12690.07	Last Survey 17972.00 'MD
18026.00	89.52	178.11	7082.49	-11772.85	1344.94	11723.00	12744.07	BHL - PTB 18026.00 'MD (86' FNL - 1893' FEL) Sec 11

Project: Weld County, CO (UTM-NAD83)
 Site: 2N-65W-35 (Labrisa Pad)
 Well: Labrisa 35-7HZ
 Wellbore: OH
 Design: OH

FORMATION TOP DETAILS

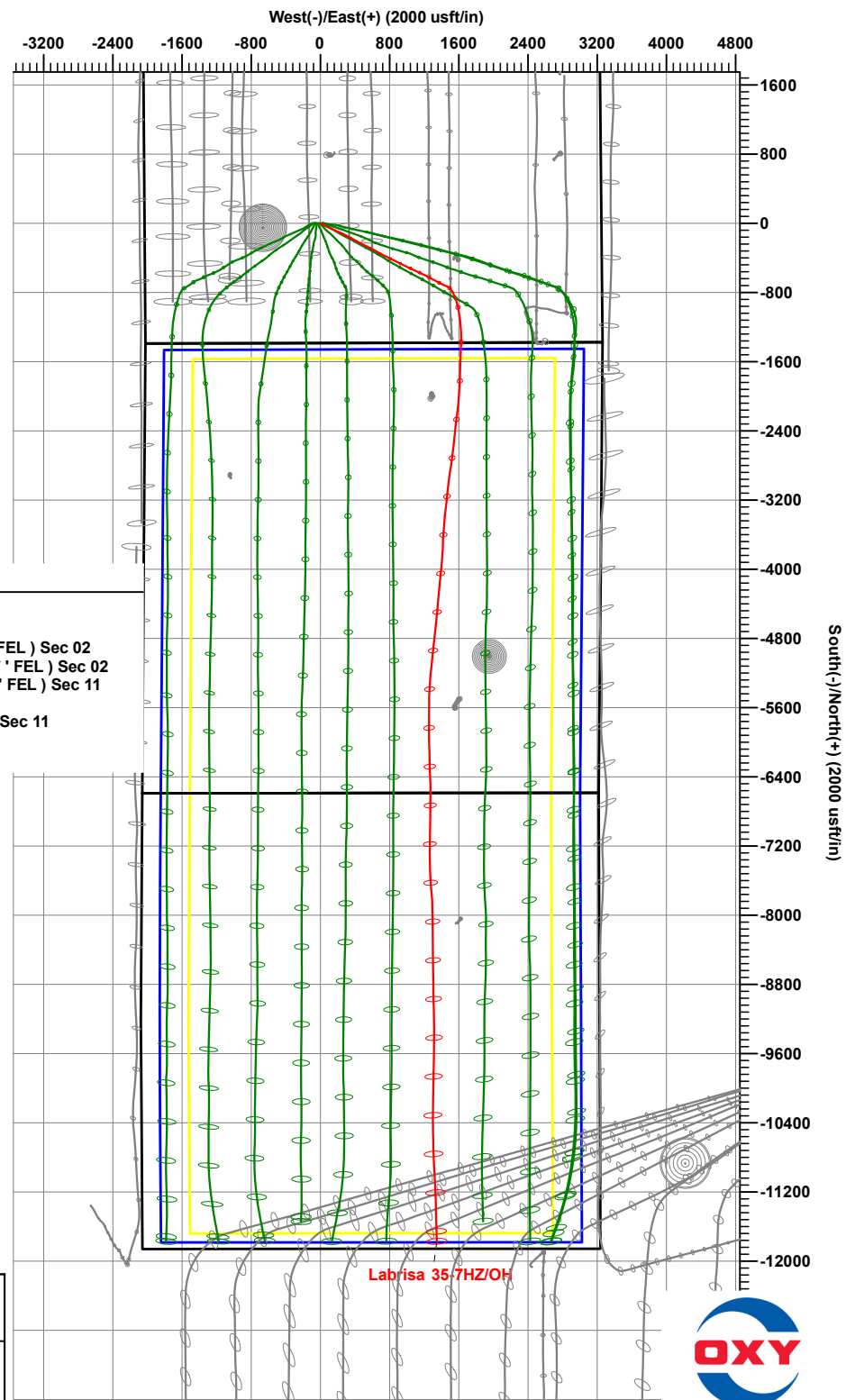
CASING DETAILS

TVD	MD	Name	Size
2036.00	2080.61	9 5/8" Prod Csg	9-5/8
	18021.53		5-1/2

TVDPath	MDPath	Formation
4025.00	4155.21	PKMN
4377.00	4522.41	SSSX
6877.00	7214.20	SSPG
6902.00	7258.48	NBRR
6997.00	7497.27	N470_B_CK

DESIGN TARGET DETAILS

Name	TVD	+N/-S	+E/-W	Northing	Easting	Latitude	Longitude
Labrisa 35-7HZ Landing	7020.20	-1464.92	1620.06	14558734.18	1744649.59	40.0872800	-104.6273328
Labrisa 35-7HZ TD	7065.20	-11774.01	1350.08	14548424.06	1744422.13	40.0589700	-104.6283000



Occidental Petroleum

Weld County, CO (UTM-NAD83)

2N-65W-35 (Labrisa Pad)

Labrisa 35-7HZ

OH

OH



Standard Survey Report

09 May, 2024

Total Report Version 1.70

COMPASS 5000.16 Build 97

Survey Report

Company:	Occidental Petroleum	Local Co-ordinate Reference:	Well Labrisa 35-7HZ
Project:	Weld County, CO (UTM-NAD83)	TVD Reference:	4970' GL + 26' KB @ 4996.00usft
Site:	2N-65W-35 (Labrisa Pad)	MD Reference:	4970' GL + 26' KB @ 4996.00usft
Well:	Labrisa 35-7HZ	North Reference:	True
Wellbore:	OH	Survey Calculation Method:	Minimum Curvature
Design:	OH	Database:	.Total Directional Production DB

Project	Weld County, CO (UTM-NAD83)		
Map System:	Universal Transverse Mercator (US Survey Feet)	System Datum:	Ground Level
Geo Datum:	North American Datum 1983		
Map Zone:	Zone 13N (108 W to 102 W)		

Site	2N-65W-35 (Labrisa Pad)		
Site Position:		Northing:	14,560,192.78 usft
From:	Map	Easting:	1,742,933.63 usft
Position Uncertainty:	0.00 usft	Slot Radius:	13-3/16 "
		Latitude:	40.0913051
		Longitude:	-104.6334463

Well	Labrisa 35-7HZ		
Well Position	+N/-S	0.00 usft	Northing:
	+E/-W	0.00 usft	Easting:
Position Uncertainty	3.28 usft	Wellhead Elevation:	usft
Grid Convergence:	0.24 °		
		Latitude:	40.0913030
		Longitude:	-104.6331250
		Ground Level:	4,970.00 usft

Wellbore	OH		
Magnetics	Model Name	Sample Date	Declination
	HDGM2024	2/25/2024	(°)
			7.73
		Dip Angle	(°)
		66.23	
		Field Strength	(nT)
			51,468.10000000

Design	OH		
Audit Notes:			
Version:	1.0	Phase:	ACTUAL
Vertical Section:	Depth From (TVD)	+N/-S	+E/-W
	(usft)	(usft)	(usft)
	0.00	0.00	0.00
		Direction	(°)
			181.86
		Tie On Depth:	0.00

Survey Program	Date	5/9/2024		
From	To	Survey (Wellbore)	Tool Name	Description
(usft)	(usft)			
89.00	2,143.00	OH (OH)	APC_ISCWSA REV 2 MWD+ Fixed:v2:crustal field declination	
2,210.00	18,026.00	Survey #2 (OH)	MWD+IFR1+SAG+MS_Rev ! ISCWSA MWD + IFR1 + Sag Correction + Multi-Station	

Survey													
Measured Depth	INC	AZI	Vertical Depth	Local Coordinates		Map Coordinates		Geo Coordinates		Vertical Section	Dogleg Rate	Build Rate	Turn Rate
(usft)	(°)	(°)	(usft)	+N/-S	+E/-W	Northing	Easting	Latitude	Longitude	(usft)	(°/100usft)	(°/100usft)	(°/100usft)
				(usft)	(usft)	(usft)	(usft)	(°)	(°)				
0.00	0.00	0.00	0.00	0.00	0.00	14,560,192.41	1,743,023.51	40.0913030	-104.6331250	0.00	0.00	0.00	0.00
89.00	0.03	295.45	89.00	0.01	-0.02	14,560,192.42	1,743,023.49	40.0913031	-104.6331251	-0.01	0.03	0.03	0.00
100.00	0.06	260.00	100.00	0.01	-0.03	14,560,192.42	1,743,023.48	40.0913031	-104.6331251	-0.01	0.40	0.31	-322.30
SHL 1386' FSL & 2034' FWL Sec 35													
181.00	0.38	240.29	181.00	-0.13	-0.31	14,560,192.28	1,743,023.20	40.0913027	-104.6331261	0.14	0.40	0.39	-24.33
272.00	0.17	269.42	272.00	-0.28	-0.70	14,560,192.13	1,743,022.80	40.0913023	-104.6331275	0.30	0.27	-0.23	32.01

Survey Report

Company:	Occidental Petroleum	Local Co-ordinate Reference:	Well Labrisa 35-7HZ
Project:	Weld County, CO (UTM-NAD83)	TVD Reference:	4970' GL + 26' KB @ 4996.00usft
Site:	2N-65W-35 (Labrisa Pad)	MD Reference:	4970' GL + 26' KB @ 4996.00usft
Well:	Labrisa 35-7HZ	North Reference:	True
Wellbore:	OH	Survey Calculation Method:	Minimum Curvature
Design:	OH	Database:	.Total Directional Production DB

Survey													
Measured Depth (usft)	INC (°)	AZI (°)	Vertical Depth (usft)	Local Coordinates +N/-S (usft)	Local Coordinates +E/-W (usft)	Map Coordinates Northing (usft)	Map Coordinates Easting (usft)	Geo Coordinates Latitude (°)	Geo Coordinates Longitude (°)	Vertical Section (usft)	Dogleg Rate (°/100usft)	Build Rate (°/100usft)	Turn Rate (°/100usft)
363.00	0.38	191.29	363.00	-0.58	-0.90	14,560,191.83	1,743,022.61	40.0913014	-104.6331282	0.61	0.42	0.23	-85.86
452.00	2.49	110.75	451.97	-1.55	0.85	14,560,190.86	1,743,024.36	40.0912988	-104.6331219	1.53	2.76	2.37	-90.49
542.00	4.71	117.92	541.79	-3.98	5.95	14,560,188.46	1,743,029.47	40.0912921	-104.6331037	3.78	2.51	2.47	7.97
631.00	5.05	113.55	630.46	-7.25	12.76	14,560,185.21	1,743,036.30	40.0912831	-104.6330793	6.83	0.57	0.38	-4.91
721.00	6.48	119.17	720.01	-11.31	20.83	14,560,181.19	1,743,044.38	40.0912720	-104.6330505	10.63	1.71	1.59	6.24
810.00	8.61	121.84	808.23	-17.27	30.88	14,560,175.26	1,743,054.45	40.0912556	-104.6330146	16.26	2.42	2.39	3.00
900.00	9.42	120.95	897.12	-24.62	42.92	14,560,167.97	1,743,066.52	40.0912354	-104.6329715	23.21	0.91	0.90	-0.99
989.00	9.45	116.45	984.92	-31.62	55.70	14,560,161.02	1,743,079.34	40.0912162	-104.6329258	29.79	0.83	0.03	-5.06
1,079.00	10.79	114.89	1,073.51	-38.45	69.96	14,560,154.25	1,743,093.63	40.0911974	-104.6328748	36.16	1.52	1.49	-1.73
1,168.00	12.60	116.21	1,160.66	-46.25	86.23	14,560,146.52	1,743,109.93	40.0911760	-104.6328167	43.42	2.06	2.03	1.48
1,258.00	14.02	115.60	1,248.24	-55.29	104.87	14,560,137.55	1,743,128.60	40.0911512	-104.6327500	51.86	1.59	1.58	-0.68
1,347.00	16.01	114.49	1,334.20	-65.04	125.76	14,560,127.89	1,743,149.54	40.0911244	-104.6326753	60.92	2.26	2.24	-1.25
1,437.00	16.20	113.21	1,420.67	-75.13	148.60	14,560,117.89	1,743,172.41	40.0910967	-104.6325937	70.27	0.45	0.21	-1.42
1,526.00	17.97	113.85	1,505.74	-85.58	172.57	14,560,107.54	1,743,196.42	40.0910680	-104.6325080	79.93	2.00	1.99	0.72
1,616.00	17.09	112.84	1,591.56	-96.33	197.45	14,560,096.90	1,743,221.35	40.0910385	-104.6324190	89.87	1.03	-0.98	-1.12
1,705.00	17.17	112.81	1,676.61	-106.49	221.61	14,560,086.83	1,743,245.56	40.0910106	-104.6323326	99.25	0.09	0.09	-0.03
1,795.00	18.00	113.60	1,762.40	-117.21	246.60	14,560,076.22	1,743,270.59	40.0909812	-104.6322433	109.15	0.96	0.92	0.88
1,884.00	17.20	117.27	1,847.24	-128.75	270.90	14,560,064.78	1,743,294.94	40.0909495	-104.6321564	119.89	1.54	-0.90	4.12
1,974.00	16.56	117.82	1,933.36	-140.83	294.07	14,560,052.79	1,743,318.16	40.0909163	-104.6320735	131.21	0.73	-0.71	0.61
2,063.00	15.00	115.58	2,019.00	-151.72	315.68	14,560,041.99	1,743,339.81	40.0908864	-104.6319963	141.40	1.88	-1.75	-2.52
2,143.00	16.29	118.01	2,096.04	-161.46	334.92	14,560,032.33	1,743,359.09	40.0908596	-104.6319275	150.51	1.81	1.61	3.04
2,210.00	15.64	119.60	2,160.46	-170.34	351.07	14,560,023.52	1,743,375.28	40.0908353	-104.6318697	158.85	1.17	-0.97	2.37
2,300.00	17.92	119.00	2,246.62	-183.04	373.73	14,560,010.91	1,743,397.99	40.0908004	-104.6317887	170.82	2.54	2.53	-0.67
2,389.00	17.16	118.15	2,331.48	-195.88	397.29	14,559,998.17	1,743,421.60	40.0907651	-104.6317045	182.88	0.90	-0.85	-0.96
2,479.00	16.53	118.22	2,417.62	-208.19	420.27	14,559,985.95	1,743,444.64	40.0907313	-104.6316223	194.44	0.70	-0.70	0.08
2,568.00	15.86	117.81	2,503.08	-219.85	442.19	14,559,974.38	1,743,466.60	40.0906993	-104.6315439	205.39	0.76	-0.75	-0.46
2,658.00	15.50	117.89	2,589.74	-231.22	463.69	14,559,963.11	1,743,488.15	40.0906681	-104.6314671	216.05	0.40	-0.40	0.09
2,747.00	17.18	117.11	2,675.14	-242.77	485.91	14,559,951.65	1,743,510.41	40.0906363	-104.6313876	226.87	1.90	1.89	-0.88
2,837.00	16.01	116.94	2,761.39	-254.45	508.80	14,559,940.06	1,743,533.36	40.0906043	-104.6313058	237.80	1.30	-1.30	-0.19
2,926.00	14.92	118.07	2,847.16	-265.40	529.86	14,559,929.19	1,743,554.45	40.0905742	-104.6312305	248.07	1.27	-1.22	1.27
3,038.00	17.86	115.94	2,954.60	-279.70	558.03	14,559,915.01	1,743,582.68	40.0905349	-104.6311298	261.44	2.68	2.63	-1.90
3,128.00	17.09	115.75	3,040.45	-291.49	582.35	14,559,903.33	1,743,607.05	40.0905026	-104.6310428	272.43	0.86	-0.86	-0.21
3,217.00	15.71	115.77	3,125.82	-302.41	604.98	14,559,892.50	1,743,629.73	40.0904726	-104.6309619	282.61	1.55	-1.55	0.02
3,307.00	17.12	119.43	3,212.16	-314.21	627.49	14,559,880.79	1,743,652.29	40.0904401	-104.6308814	293.68	1.94	1.57	4.07
3,396.00	15.87	121.25	3,297.49	-326.96	649.31	14,559,868.13	1,743,674.16	40.0904051	-104.6308034	305.72	1.52	-1.40	2.04
3,486.00	17.36	121.47	3,383.73	-340.36	671.28	14,559,854.82	1,743,696.18	40.0903683	-104.6307248	318.39	1.66	1.66	0.24
3,575.00	15.53	120.37	3,469.09	-353.31	692.89	14,559,841.96	1,743,717.84	40.0903328	-104.6306476	330.64	2.09	-2.06	-1.24
3,665.00	17.22	115.24	3,555.44	-365.09	715.33	14,559,830.28	1,743,740.34	40.0903004	-104.6305673	341.68	2.47	1.88	-5.70

Survey Report

Company:	Occidental Petroleum	Local Co-ordinate Reference:	Well Labrisa 35-7HZ
Project:	Weld County, CO (UTM-NAD83)	TVD Reference:	4970' GL + 26' KB @ 4996.00usft
Site:	2N-65W-35 (Labrisa Pad)	MD Reference:	4970' GL + 26' KB @ 4996.00usft
Well:	Labrisa 35-7HZ	North Reference:	True
Wellbore:	OH	Survey Calculation Method:	Minimum Curvature
Design:	OH	Database:	.Total Directional Production DB

Survey													
Measured Depth (usft)	INC (°)	AZI (°)	Vertical Depth (usft)	Local Coordinates +N/-S (usft)	+E/-W (usft)	Map Coordinates Northing (usft)	Easting (usft)	Geo Coordinates Latitude (°)	Longituge (°)	Vertical Section (usft)	Dogleg Rate (°/100usft)	Build Rate (°/100usft)	Turn Rate (°/100usft)
3,755.00	14.98	115.54	3,641.90	-375.79	737.88	14,559,819.67	1,743,762.93	40.0902711	-104.6304867	351.64	2.49	-2.49	0.33
3,844.00	17.91	116.19	3,727.25	-386.79	760.55	14,559,808.76	1,743,785.64	40.0902408	-104.6304057	361.90	3.30	3.29	0.73
3,934.00	17.79	117.01	3,812.92	-399.14	785.21	14,559,796.51	1,743,810.36	40.0902069	-104.6303175	373.44	0.31	-0.13	0.91
4,023.00	18.01	116.19	3,897.61	-411.39	809.67	14,559,784.37	1,743,834.87	40.0901733	-104.6302300	384.89	0.38	0.25	-0.92
4,113.00	16.24	115.42	3,983.62	-422.93	833.52	14,559,772.92	1,743,858.77	40.0901416	-104.6301448	395.65	1.98	-1.97	-0.86
4,203.00	17.17	116.14	4,069.82	-434.18	856.82	14,559,761.76	1,743,882.11	40.0901107	-104.6300615	406.14	1.06	1.03	0.80
4,292.00	16.70	115.51	4,154.96	-445.48	880.15	14,559,750.57	1,743,905.49	40.0900797	-104.6299780	416.68	0.57	-0.53	-0.71
4,381.00	15.17	116.03	4,240.54	-456.10	902.16	14,559,740.04	1,743,927.54	40.0900505	-104.6298994	426.57	1.73	-1.72	0.58
4,471.00	16.48	118.43	4,327.13	-467.34	923.97	14,559,728.88	1,743,949.39	40.0900196	-104.6298214	437.11	1.63	1.46	2.67
4,560.00	17.23	116.45	4,412.30	-479.22	946.87	14,559,717.10	1,743,972.34	40.0899870	-104.6297395	448.24	1.06	0.84	-2.22
4,650.00	15.78	116.63	4,498.59	-490.65	969.74	14,559,705.77	1,743,995.27	40.0899556	-104.6296577	458.91	1.61	-1.61	0.20
4,740.00	17.54	114.05	4,584.81	-501.66	993.07	14,559,694.85	1,744,018.64	40.0899254	-104.6295743	469.16	2.12	1.96	-2.87
4,829.00	16.86	114.01	4,669.83	-512.38	1,017.11	14,559,684.23	1,744,042.72	40.0898959	-104.6294884	479.09	0.76	-0.76	-0.04
4,919.00	16.15	114.13	4,756.12	-522.80	1,040.45	14,559,673.90	1,744,066.11	40.0898673	-104.6294049	488.76	0.79	-0.79	0.13
5,008.00	14.21	115.07	4,842.01	-532.49	1,061.65	14,559,664.30	1,744,087.34	40.0898407	-104.6293291	497.76	2.20	-2.18	1.06
5,098.00	15.82	117.51	4,928.94	-542.84	1,082.53	14,559,654.04	1,744,108.27	40.0898123	-104.6292545	507.42	1.92	1.79	2.71
5,188.00	16.49	115.43	5,015.38	-553.99	1,104.95	14,559,642.98	1,744,130.73	40.0897816	-104.6291743	517.84	0.98	0.74	-2.31
5,277.00	13.52	113.49	5,101.34	-563.57	1,125.90	14,559,633.49	1,744,151.73	40.0897553	-104.6290994	526.73	3.38	-3.34	-2.18
5,367.00	15.73	113.77	5,188.42	-572.68	1,146.72	14,559,624.47	1,744,172.58	40.0897303	-104.6290250	535.16	2.46	2.46	0.31
5,456.00	17.94	117.00	5,273.60	-583.77	1,169.98	14,559,613.47	1,744,195.88	40.0896999	-104.6289418	545.48	2.70	2.48	3.63
5,546.00	14.86	114.42	5,359.93	-594.83	1,192.84	14,559,602.50	1,744,218.79	40.0896695	-104.6288601	555.80	3.52	-3.42	-2.87
5,636.00	16.31	116.61	5,446.62	-605.26	1,214.65	14,559,592.16	1,744,240.64	40.0896408	-104.6287821	565.52	1.74	1.61	2.43
5,725.00	15.93	118.08	5,532.12	-616.61	1,236.60	14,559,580.90	1,744,262.64	40.0896097	-104.6287036	576.15	0.63	-0.43	1.65
5,815.00	15.43	118.41	5,618.77	-628.12	1,258.03	14,559,569.48	1,744,284.11	40.0895781	-104.6286270	586.96	0.56	-0.56	0.37
5,905.00	16.08	117.53	5,705.39	-639.58	1,279.61	14,559,558.11	1,744,305.74	40.0895466	-104.6285498	597.71	0.77	0.72	-0.98
5,994.00	16.45	118.90	5,790.83	-651.37	1,301.57	14,559,546.42	1,744,327.75	40.0895142	-104.6284713	608.78	0.60	0.42	1.54
6,084.00	17.94	118.35	5,876.80	-664.11	1,324.93	14,559,533.77	1,744,351.16	40.0894792	-104.6283878	620.75	1.67	1.66	-0.61
6,173.00	17.34	117.48	5,961.62	-676.74	1,348.76	14,559,521.24	1,744,375.04	40.0894445	-104.6283026	632.60	0.74	-0.67	-0.98
6,263.00	17.42	117.60	6,047.51	-689.17	1,372.60	14,559,508.91	1,744,398.93	40.0894104	-104.6282174	644.25	0.10	0.09	0.13
6,353.00	17.49	116.74	6,133.37	-701.49	1,396.61	14,559,496.68	1,744,423.00	40.0893765	-104.6281315	655.79	0.30	0.08	-0.96
6,442.00	17.38	113.63	6,218.28	-712.84	1,420.73	14,559,485.44	1,744,447.17	40.0893454	-104.6280453	666.35	1.05	-0.12	-3.49
6,532.00	17.43	112.20	6,304.16	-723.32	1,445.53	14,559,475.06	1,744,472.01	40.0893166	-104.6279566	676.02	0.48	0.06	-1.59
6,621.00	16.89	116.29	6,389.20	-734.08	1,469.46	14,559,464.39	1,744,495.99	40.0892870	-104.6278711	686.00	1.49	-0.61	4.60
6,711.00	20.19	130.60	6,474.56	-749.99	1,493.00	14,559,448.58	1,744,519.58	40.0892433	-104.6277869	701.14	6.22	3.67	15.90
6,801.00	23.89	146.35	6,558.04	-775.30	1,514.91	14,559,423.36	1,744,541.61	40.0891738	-104.6277086	725.72	7.71	4.11	17.50
6,890.00	29.50	153.87	6,637.55	-810.02	1,534.57	14,559,388.73	1,744,561.41	40.0890785	-104.6276383	759.78	7.35	6.30	8.45
6,980.00	35.76	158.44	6,713.32	-854.42	1,554.02	14,559,344.41	1,744,581.03	40.0889566	-104.6275688	803.53	7.47	6.96	5.08

Survey Report

Company:	Occidental Petroleum	Local Co-ordinate Reference:	Well Labrisa 35-7HZ
Project:	Weld County, CO (UTM-NAD83)	TVD Reference:	4970' GL + 26' KB @ 4996.00usft
Site:	2N-65W-35 (Labrisa Pad)	MD Reference:	4970' GL + 26' KB @ 4996.00usft
Well:	Labrisa 35-7HZ	North Reference:	True
Wellbore:	OH	Survey Calculation Method:	Minimum Curvature
Design:	OH	Database:	.Total Directional Production DB

Survey													
Measured Depth (usft)	INC (°)	AZI (°)	Vertical Depth (usft)	Local Coordinates +N/-S (usft)	+E/-W (usft)	Map Coordinates Northing (usft)	Easting (usft)	Geo Coordinates Latitude (°)	Longituge (°)	Vertical Section (usft)	Dogleg Rate (°/100usft)	Build Rate (°/100usft)	Turn Rate (°/100usft)
7,069.00	43.44	163.08	6,781.86	-907.97	1,572.51	14,559,290.93	1,744,599.75	40.0888095	-104.6275027	856.45	9.24	8.63	5.21
7,159.00	51.18	167.17	6,842.85	-971.87	1,589.33	14,559,227.10	1,744,616.83	40.0886340	-104.6274425	919.77	9.22	8.60	4.54
7,248.00	57.95	171.34	6,894.43	-1,043.07	1,602.73	14,559,155.96	1,744,630.52	40.0884385	-104.6273947	990.50	8.51	7.61	4.69
7,338.00	64.94	172.75	6,937.43	-1,121.31	1,613.63	14,559,077.76	1,744,641.75	40.0882236	-104.6273557	1,068.34	7.89	7.77	1.57
7,427.00	70.52	175.36	6,971.15	-1,203.19	1,622.12	14,558,995.92	1,744,650.57	40.0879988	-104.6273254	1,149.91	6.83	6.27	2.93
7,517.00	75.68	178.30	6,997.31	-1,289.13	1,626.85	14,558,910.00	1,744,655.66	40.0877628	-104.6273085	1,235.65	6.53	5.73	3.27
7,606.00	82.91	181.03	7,013.83	-1,376.52	1,627.33	14,558,822.62	1,744,656.50	40.0875228	-104.6273068	1,322.97	8.66	8.12	3.07
7,611.11	83.33	181.14	7,014.44	-1,381.59	1,627.24	14,558,817.54	1,744,656.43	40.0875089	-104.6273071	1,328.04	8.53	8.23	2.24
Cross Section Line 7611.11 'MD (0' FNL - 1635 ' FEL) Sec 02													
7,686.41	89.53	182.82	7,019.13	-1,456.66	1,624.64	14,558,742.46	1,744,654.14	40.0873027	-104.6273164	1,403.16	8.53	8.23	2.22
Cross Hard Line Nio 7686.41 'MD (75' FNL - 1637 ' FEL) Sec 02													
7,696.00	90.32	183.03	7,019.14	-1,466.24	1,624.15	14,558,732.89	1,744,653.69	40.0872764	-104.6273182	1,412.75	8.53	8.23	2.21
7,785.00	90.61	182.32	7,018.42	-1,555.14	1,619.99	14,558,643.97	1,744,649.90	40.0870323	-104.6273330	1,501.73	0.86	0.33	-0.80
7,875.00	90.48	181.72	7,017.56	-1,645.07	1,616.82	14,558,554.02	1,744,647.10	40.0867853	-104.6273444	1,591.73	0.68	-0.14	-0.67
7,964.00	89.75	181.93	7,017.38	-1,734.03	1,613.99	14,558,465.05	1,744,644.63	40.0865410	-104.6273546	1,680.73	0.85	-0.82	0.24
8,054.00	91.06	181.72	7,016.75	-1,823.98	1,611.12	14,558,375.09	1,744,642.14	40.0862940	-104.6273648	1,770.72	1.47	1.46	-0.23
8,143.00	91.63	184.13	7,014.66	-1,912.83	1,606.58	14,558,286.22	1,744,637.96	40.0860500	-104.6273811	1,859.68	2.78	0.64	2.71
8,233.00	93.35	183.95	7,010.75	-2,002.52	1,600.25	14,558,196.51	1,744,632.00	40.0858037	-104.6274037	1,949.52	1.92	1.91	-0.20
8,322.00	91.47	185.63	7,007.01	-2,091.12	1,592.82	14,558,107.87	1,744,624.94	40.0855604	-104.6274303	2,038.32	2.83	-2.11	1.89
8,412.00	88.75	187.06	7,006.83	-2,180.56	1,582.88	14,558,018.40	1,744,615.36	40.0853148	-104.6274659	2,128.04	3.41	-3.02	1.59
8,501.00	88.91	186.81	7,008.65	-2,268.89	1,572.13	14,557,930.02	1,744,604.98	40.0850723	-104.6275043	2,216.67	0.33	0.18	-0.28
8,591.00	89.21	186.65	7,010.13	-2,358.26	1,561.59	14,557,840.61	1,744,594.81	40.0848268	-104.6275420	2,306.33	0.38	0.33	-0.18
8,681.00	89.25	185.96	7,011.34	-2,447.71	1,551.70	14,557,751.12	1,744,585.29	40.0845812	-104.6275774	2,396.05	0.77	0.04	-0.77
8,770.00	88.96	185.00	7,012.73	-2,536.29	1,543.21	14,557,662.51	1,744,577.16	40.0843380	-104.6276078	2,484.86	1.13	-0.33	-1.08
8,860.00	89.73	187.84	7,013.76	-2,625.71	1,533.14	14,557,573.05	1,744,567.47	40.0840924	-104.6276438	2,574.56	3.27	0.86	3.16
8,950.00	89.29	187.00	7,014.53	-2,714.95	1,521.52	14,557,483.76	1,744,556.21	40.0838473	-104.6276854	2,664.13	1.05	-0.49	-0.93
9,039.00	90.39	188.50	7,014.77	-2,803.13	1,509.52	14,557,395.53	1,744,544.57	40.0836052	-104.6277283	2,752.66	2.09	1.24	1.69
9,129.00	91.89	188.59	7,012.98	-2,892.11	1,496.15	14,557,306.49	1,744,531.57	40.0833608	-104.6277761	2,842.03	1.67	1.67	0.10
9,218.00	89.60	187.25	7,011.83	-2,980.25	1,483.89	14,557,218.31	1,744,519.67	40.0831188	-104.6278200	2,930.52	2.98	-2.57	-1.51
9,308.00	89.51	186.24	7,012.53	-3,069.62	1,473.32	14,557,128.89	1,744,509.47	40.0828734	-104.6278578	3,020.18	1.13	-0.10	-1.12
9,398.00	89.95	186.02	7,012.95	-3,159.11	1,463.71	14,557,039.37	1,744,500.23	40.0826276	-104.6278921	3,109.93	0.55	0.49	-0.24
9,487.00	91.16	185.73	7,012.09	-3,247.63	1,454.60	14,556,950.80	1,744,491.49	40.0823845	-104.6279247	3,198.71	1.40	1.36	-0.33
9,576.00	89.71	186.69	7,011.41	-3,336.10	1,444.97	14,556,862.29	1,744,482.23	40.0821416	-104.6279592	3,287.45	1.95	-1.63	1.08
9,666.00	90.59	186.80	7,011.18	-3,425.48	1,434.40	14,556,772.87	1,744,472.02	40.0818961	-104.6279970	3,377.12	0.99	0.98	0.12
9,756.00	90.49	184.43	7,010.33	-3,515.04	1,425.60	14,556,683.28	1,744,463.59	40.0816502	-104.6280285	3,466.91	2.64	-0.11	-2.63
9,845.00	90.99	182.02	7,009.18	-3,603.88	1,420.59	14,556,594.42	1,744,458.95	40.0814062	-104.6280464	3,555.88	2.77	0.56	-2.71
9,934.00	91.47	181.27	7,007.27	-3,692.82	1,418.04	14,556,505.46	1,744,456.76	40.0811620	-104.6280555	3,644.85	1.00	0.54	-0.84
10,024.00	90.75	183.64	7,005.52	-3,782.72	1,414.18	14,556,415.56	1,744,453.28	40.0809151	-104.6280693	3,734.82	2.75	-0.80	2.63

Survey Report

Company:	Occidental Petroleum	Local Co-ordinate Reference:	Well Labrisa 35-7HZ
Project:	Weld County, CO (UTM-NAD83)	TVD Reference:	4970' GL + 26' KB @ 4996.00usft
Site:	2N-65W-35 (Labrisa Pad)	MD Reference:	4970' GL + 26' KB @ 4996.00usft
Well:	Labrisa 35-7HZ	North Reference:	True
Wellbore:	OH	Survey Calculation Method:	Minimum Curvature
Design:	OH	Database:	.Total Directional Production DB

Survey													
Measured Depth (usft)	INC (°)	AZI (°)	Vertical Depth (usft)	Local Coordinates +N/-S (usft)	Local Coordinates +E/-W (usft)	Map Coordinates Northing (usft)	Map Coordinates Easting (usft)	Geo Coordinates Latitude (°)	Geo Coordinates Longitude (°)	Vertical Section (usft)	Dogleg Rate (°/100usft)	Build Rate (°/100usft)	Turn Rate (°/100usft)
10,114.00	89.58	185.24	7,005.26	-3,872.44	1,407.22	14,556,325.80	1,744,446.68	40.0806687	-104.6280942	3,824.73	2.20	-1.30	1.78
10,203.00	88.34	185.46	7,006.88	-3,961.04	1,398.92	14,556,237.17	1,744,438.75	40.0804254	-104.6281239	3,913.55	1.42	-1.39	0.25
10,293.00	87.11	186.02	7,010.45	-4,050.52	1,389.93	14,556,147.66	1,744,430.12	40.0801797	-104.6281561	4,003.27	1.50	-1.37	0.62
10,383.00	87.18	185.48	7,014.94	-4,139.95	1,380.92	14,556,058.19	1,744,421.49	40.0799341	-104.6281883	4,092.95	0.60	0.08	-0.60
10,472.00	87.37	185.11	7,019.17	-4,228.47	1,372.72	14,555,969.64	1,744,413.65	40.0796910	-104.6282177	4,181.69	0.47	0.21	-0.42
10,562.00	87.92	184.94	7,022.87	-4,318.05	1,364.84	14,555,880.03	1,744,406.14	40.0794451	-104.6282458	4,271.47	0.64	0.61	-0.19
10,651.00	86.59	185.20	7,027.13	-4,406.60	1,356.98	14,555,791.45	1,744,398.65	40.0792019	-104.6282739	4,360.23	1.52	-1.49	0.29
10,741.00	86.53	185.26	7,032.53	-4,496.06	1,348.79	14,555,701.95	1,744,390.83	40.0789562	-104.6283032	4,449.91	0.09	-0.07	0.07
10,831.00	89.21	186.33	7,035.87	-4,585.53	1,339.71	14,555,612.45	1,744,382.12	40.0787105	-104.6283357	4,539.63	3.21	2.98	1.19
10,920.00	90.11	185.75	7,036.40	-4,674.03	1,330.35	14,555,523.90	1,744,373.12	40.0784675	-104.6283692	4,628.39	1.20	1.01	-0.65
11,010.00	93.70	185.78	7,033.41	-4,763.51	1,321.32	14,555,434.39	1,744,364.46	40.0782218	-104.6284015	4,718.12	3.99	3.99	0.03
11,100.00	91.59	186.74	7,029.26	-4,852.88	1,311.51	14,555,344.99	1,744,355.02	40.0779764	-104.6284366	4,807.75	2.58	-2.34	1.07
11,189.00	89.14	185.86	7,028.69	-4,941.33	1,301.75	14,555,256.49	1,744,345.62	40.0777335	-104.6284715	4,896.47	2.92	-2.75	-0.99
11,279.00	89.10	186.11	7,030.07	-5,030.83	1,292.36	14,555,166.96	1,744,336.61	40.0774877	-104.6285050	4,986.23	0.28	-0.04	0.28
11,368.00	89.30	186.41	7,031.31	-5,119.29	1,282.66	14,555,078.46	1,744,327.27	40.0772448	-104.6285398	5,074.96	0.41	0.22	0.34
11,458.00	89.54	183.97	7,032.23	-5,208.91	1,274.52	14,554,988.80	1,744,319.50	40.0769987	-104.6285689	5,164.80	2.72	0.27	-2.71
11,548.00	89.99	184.23	7,032.59	-5,298.68	1,268.09	14,554,899.01	1,744,313.43	40.0767521	-104.6285919	5,254.73	0.58	0.50	0.29
11,637.00	90.63	183.70	7,032.11	-5,387.46	1,261.93	14,554,810.20	1,744,307.65	40.0765083	-104.6286139	5,343.66	0.93	0.72	-0.60
11,727.00	89.58	181.07	7,031.95	-5,477.37	1,258.19	14,554,720.27	1,744,304.27	40.0762614	-104.6286273	5,433.65	3.15	-1.17	-2.92
11,816.00	90.11	180.51	7,032.19	-5,566.36	1,256.96	14,554,631.28	1,744,303.41	40.0760170	-104.6286317	5,522.63	0.87	0.60	-0.63
11,906.00	91.32	180.18	7,031.07	-5,656.35	1,256.42	14,554,541.29	1,744,303.24	40.0757699	-104.6286337	5,612.59	1.39	1.34	-0.37
11,996.00	89.77	180.49	7,030.21	-5,746.35	1,255.89	14,554,451.29	1,744,303.09	40.0755228	-104.6286356	5,702.55	1.76	-1.72	0.34
12,085.00	90.84	180.03	7,029.74	-5,835.34	1,255.49	14,554,362.30	1,744,303.05	40.0752784	-104.6286370	5,791.52	1.31	1.20	-0.52
12,175.00	88.09	179.63	7,030.58	-5,925.33	1,255.75	14,554,272.31	1,744,303.69	40.0750313	-104.6286361	5,881.45	3.09	-3.06	-0.44
12,264.00	89.03	178.95	7,032.81	-6,014.29	1,256.86	14,554,183.35	1,744,305.16	40.0747870	-104.6286321	5,970.33	1.30	1.06	-0.76
12,354.00	89.56	178.82	7,033.92	-6,104.27	1,258.61	14,554,093.39	1,744,307.28	40.0745399	-104.6286259	6,060.20	0.61	0.59	-0.14
12,444.00	90.33	178.13	7,034.01	-6,194.23	1,261.00	14,554,003.43	1,744,310.04	40.0742928	-104.6286174	6,150.04	1.15	0.86	-0.77
12,533.00	91.37	177.70	7,032.69	-6,283.16	1,264.24	14,553,914.51	1,744,313.65	40.0740486	-104.6286058	6,238.82	1.26	1.17	-0.48
12,623.00	89.44	178.61	7,032.05	-6,373.11	1,267.14	14,553,824.58	1,744,316.92	40.0738016	-104.6285955	6,328.62	2.37	-2.14	1.01
12,713.00	90.59	178.04	7,032.03	-6,463.07	1,269.77	14,553,734.63	1,744,319.92	40.0735546	-104.6285861	6,418.45	1.43	1.28	-0.63
12,802.00	90.08	180.27	7,031.51	-6,552.05	1,271.08	14,553,645.66	1,744,321.60	40.0733102	-104.6285814	6,507.34	2.57	-0.57	2.51
12,838.05	89.54	180.38	7,031.63	-6,588.10	1,270.88	14,553,609.61	1,744,321.54	40.0732112	-104.6285821	6,543.38	1.53	-1.50	0.30
Cross Section Line 12838.05 'MD (0' FNL - 1946' FEL) Sec 11													
12,892.00	88.73	180.54	7,032.44	-6,642.04	1,270.45	14,553,555.66	1,744,321.33	40.0730631	-104.6285837	6,597.31	1.53	-1.50	0.30
12,982.00	89.67	180.42	7,033.70	-6,732.03	1,269.69	14,553,465.67	1,744,320.95	40.0728160	-104.6285864	6,687.27	1.05	1.04	-0.13
13,071.00	90.78	179.90	7,033.35	-6,821.03	1,269.44	14,553,376.68	1,744,321.07	40.0725716	-104.6285873	6,776.23	1.38	1.25	-0.58
13,161.00	88.36	180.98	7,034.02	-6,911.01	1,268.75	14,553,286.69	1,744,320.75	40.0723245	-104.6285898	6,866.19	2.94	-2.69	1.20
13,251.00	88.62	181.29	7,036.39	-7,000.97	1,266.97	14,553,196.73	1,744,319.34	40.0720774	-104.6285962	6,956.15	0.45	0.29	0.34

Survey Report

Company:	Occidental Petroleum	Local Co-ordinate Reference:	Well Labrisa 35-7HZ
Project:	Weld County, CO (UTM-NAD83)	TVD Reference:	4970' GL + 26' KB @ 4996.00usft
Site:	2N-65W-35 (Labrisa Pad)	MD Reference:	4970' GL + 26' KB @ 4996.00usft
Well:	Labrisa 35-7HZ	North Reference:	True
Wellbore:	OH	Survey Calculation Method:	Minimum Curvature
Design:	OH	Database:	.Total Directional Production DB

Survey													
Measured Depth (usft)	INC (°)	AZI (°)	Vertical Depth (usft)	Local Coordinates +N/-S (usft)	+E/-W (usft)	Map Coordinates Northing (usft)	Easting (usft)	Geo Coordinates Latitude (°)	Longituge (°)	Vertical Section (usft)	Dogleg Rate (°/100usft)	Build Rate (°/100usft)	Turn Rate (°/100usft)
13,340.00	88.96	180.57	7,038.27	-7,089.93	1,265.53	14,553,107.76	1,744,318.26	40.0718331	-104.6286013	7,045.12	0.89	0.38	-0.81
13,429.00	89.95	181.07	7,039.12	-7,178.92	1,264.25	14,553,018.77	1,744,317.35	40.0715888	-104.6286059	7,134.10	1.25	1.11	0.56
13,519.00	88.34	179.29	7,040.46	-7,268.90	1,263.97	14,552,928.78	1,744,317.44	40.0713417	-104.6286069	7,224.05	2.67	-1.79	-1.98
13,608.00	88.41	179.57	7,042.99	-7,357.86	1,264.85	14,552,839.83	1,744,318.69	40.0710974	-104.6286038	7,312.93	0.32	0.08	0.31
13,698.00	88.36	178.43	7,045.52	-7,447.81	1,266.42	14,552,749.89	1,744,320.63	40.0708504	-104.6285982	7,402.78	1.27	-0.06	-1.27
13,788.00	89.17	177.89	7,047.46	-7,537.74	1,269.31	14,552,659.97	1,744,323.89	40.0706034	-104.6285879	7,492.57	1.08	0.90	-0.60
13,877.00	89.81	176.05	7,048.26	-7,626.61	1,274.02	14,552,571.12	1,744,328.97	40.0703593	-104.6285711	7,581.24	2.19	0.72	-2.07
13,967.00	90.99	175.27	7,047.63	-7,716.35	1,280.83	14,552,481.41	1,744,336.15	40.0701129	-104.6285468	7,670.71	1.57	1.31	-0.87
14,057.00	89.54	174.97	7,047.21	-7,806.02	1,288.48	14,552,391.77	1,744,344.17	40.0698667	-104.6285194	7,760.08	1.65	-1.61	-0.33
14,146.00	89.90	178.39	7,047.65	-7,894.85	1,293.64	14,552,302.96	1,744,349.69	40.0696227	-104.6285010	7,848.71	3.86	0.40	3.84
14,236.00	91.58	178.75	7,046.48	-7,984.81	1,295.88	14,552,213.01	1,744,352.31	40.0693757	-104.6284930	7,938.55	1.91	1.87	0.40
14,326.00	88.35	179.87	7,046.54	-8,074.80	1,296.97	14,552,123.03	1,744,353.76	40.0691286	-104.6284891	8,028.44	3.80	-3.59	1.24
14,415.00	88.70	179.55	7,048.83	-8,163.76	1,297.42	14,552,034.07	1,744,354.58	40.0688843	-104.6284875	8,117.35	0.53	0.39	-0.36
14,505.00	88.79	179.66	7,050.80	-8,253.74	1,298.04	14,551,944.09	1,744,355.57	40.0686372	-104.6284853	8,207.26	0.16	0.10	0.12
14,595.00	90.01	179.36	7,051.74	-8,343.73	1,298.81	14,551,854.11	1,744,356.71	40.0683900	-104.6284826	8,297.18	1.40	1.36	-0.33
14,684.00	90.08	178.98	7,051.67	-8,432.72	1,300.10	14,551,765.12	1,744,358.37	40.0681457	-104.6284780	8,386.08	0.43	0.08	-0.43
14,774.00	91.52	179.15	7,050.42	-8,522.70	1,301.56	14,551,675.15	1,744,360.21	40.0678986	-104.6284728	8,475.96	1.61	1.60	0.19
14,864.00	88.40	179.69	7,050.48	-8,612.68	1,302.48	14,551,585.17	1,744,361.49	40.0676515	-104.6284695	8,565.87	3.52	-3.47	0.60
14,954.00	88.68	179.41	7,052.77	-8,702.65	1,303.18	14,551,495.21	1,744,362.57	40.0674044	-104.6284670	8,655.77	0.44	0.31	-0.31
15,043.00	88.76	179.11	7,054.76	-8,791.62	1,304.33	14,551,406.24	1,744,364.08	40.0671601	-104.6284629	8,744.65	0.35	0.09	-0.34
15,133.00	88.83	178.64	7,056.65	-8,881.58	1,306.10	14,551,316.29	1,744,366.22	40.0669130	-104.6284566	8,834.51	0.53	0.08	-0.52
15,222.00	89.31	179.01	7,058.10	-8,970.55	1,307.92	14,551,227.33	1,744,368.41	40.0666687	-104.6284501	8,923.37	0.68	0.54	0.42
15,312.00	90.05	179.07	7,058.60	-9,060.54	1,309.43	14,551,137.35	1,744,370.29	40.0664216	-104.6284448	9,013.26	0.82	0.82	0.07
15,402.00	91.39	178.92	7,057.47	-9,150.51	1,311.01	14,551,047.38	1,744,372.24	40.0661745	-104.6284391	9,103.14	1.50	1.49	-0.17
15,491.00	89.00	179.54	7,057.17	-9,239.50	1,312.20	14,550,958.40	1,744,373.80	40.0659301	-104.6284349	9,192.04	2.77	-2.69	0.70
15,581.00	90.49	179.46	7,057.57	-9,329.49	1,312.99	14,550,868.41	1,744,374.96	40.0656830	-104.6284321	9,281.96	1.66	1.66	-0.09
15,670.00	91.70	179.33	7,055.87	-9,418.47	1,313.93	14,550,779.44	1,744,376.27	40.0654387	-104.6284288	9,370.86	1.37	1.36	-0.15
15,760.00	88.70	180.41	7,055.55	-9,508.46	1,314.13	14,550,689.45	1,744,376.84	40.0651916	-104.6284280	9,460.79	3.54	-3.33	1.20
15,849.00	89.41	180.67	7,057.02	-9,597.44	1,313.30	14,550,600.47	1,744,376.37	40.0649472	-104.6284311	9,549.76	0.85	0.80	0.29
15,939.00	90.22	180.76	7,057.31	-9,687.43	1,312.17	14,550,510.47	1,744,375.62	40.0647001	-104.6284351	9,639.74	0.91	0.90	0.10
16,029.00	91.82	181.41	7,055.71	-9,777.40	1,310.47	14,550,420.50	1,744,374.29	40.0644530	-104.6284412	9,729.71	1.92	1.78	0.72
16,118.00	88.54	181.63	7,055.43	-9,866.35	1,308.11	14,550,331.54	1,744,372.29	40.0642087	-104.6284496	9,818.70	3.69	-3.69	0.25
16,208.00	88.99	181.33	7,057.37	-9,956.30	1,305.78	14,550,241.58	1,744,370.34	40.0639617	-104.6284580	9,908.67	0.60	0.50	-0.33
16,298.00	88.96	181.04	7,058.98	-10,046.27	1,303.92	14,550,151.61	1,744,368.85	40.0637147	-104.6284646	9,998.65	0.32	-0.03	-0.32
16,387.00	88.81	181.49	7,060.71	-10,135.23	1,301.96	14,550,062.64	1,744,367.25	40.0634704	-104.6284717	10,087.63	0.53	-0.17	0.51
16,477.00	87.92	181.47	7,063.28	-10,225.16	1,299.63	14,549,972.70	1,744,365.30	40.0632234	-104.6284800	10,177.59	0.99	-0.99	-0.02
16,566.00	88.61	178.63	7,065.97	-10,314.11	1,299.56	14,549,883.75	1,744,365.59	40.0629791	-104.6284803	10,266.50	3.28	0.78	-3.19

Survey Report

Company:	Occidental Petroleum	Local Co-ordinate Reference:	Well Labrisa 35-7HZ
Project:	Weld County, CO (UTM-NAD83)	TVD Reference:	4970' GL + 26' KB @ 4996.00usft
Site:	2N-65W-35 (Labrisa Pad)	MD Reference:	4970' GL + 26' KB @ 4996.00usft
Well:	Labrisa 35-7HZ	North Reference:	True
Wellbore:	OH	Survey Calculation Method:	Minimum Curvature
Design:	OH	Database:	.Total Directional Production DB

Survey

Measured Depth (usft)	INC (°)	AZI (°)	Vertical Depth (usft)	Local Coordinates +N/-S (usft)	+E/-W (usft)	Map Coordinates Northing (usft)	Easting (usft)	Geo Coordinates Latitude (°)	Longituge (°)	Vertical Section (usft)	Dogleg Rate (°/100usft)	Build Rate (°/100usft)	Turn Rate (°/100usft)
16,656.00	87.88	179.32	7,068.73	-10,404.05	1,301.17	14,549,793.81	1,744,367.57	40.0627321	-104.6284745	10,356.34	1.12	-0.81	0.77
16,746.00	87.16	179.85	7,072.63	-10,493.97	1,301.82	14,549,703.90	1,744,368.59	40.0624852	-104.6284722	10,446.18	0.99	-0.80	0.59
16,835.00	88.81	178.60	7,075.75	-10,582.90	1,303.02	14,549,614.98	1,744,370.16	40.0622410	-104.6284679	10,535.03	2.33	1.85	-1.40
16,925.00	87.95	178.89	7,078.30	-10,672.84	1,304.99	14,549,525.04	1,744,372.50	40.0619940	-104.6284609	10,624.86	1.01	-0.96	0.32
17,014.00	89.76	177.43	7,080.08	-10,761.77	1,307.85	14,549,436.13	1,744,375.73	40.0617498	-104.6284507	10,713.65	2.61	2.03	-1.64
17,104.00	88.99	177.47	7,081.06	-10,851.67	1,311.85	14,549,346.24	1,744,380.10	40.0615029	-104.6284364	10,803.38	0.86	-0.86	0.04
17,194.00	88.22	176.85	7,083.25	-10,941.54	1,316.31	14,549,256.40	1,744,384.93	40.0612561	-104.6284205	10,893.05	1.10	-0.86	-0.69
17,283.00	90.55	177.84	7,084.21	-11,030.43	1,320.43	14,549,167.52	1,744,389.42	40.0610120	-104.6284058	10,981.76	2.84	2.62	1.11
17,373.00	89.45	175.93	7,084.21	-11,120.29	1,325.32	14,549,077.68	1,744,394.68	40.0607652	-104.6283883	11,071.41	2.45	-1.22	-2.12
17,463.00	91.22	178.36	7,083.68	-11,210.17	1,329.81	14,548,987.82	1,744,399.53	40.0605184	-104.6283723	11,161.10	3.34	1.97	2.70
17,552.00	92.20	177.92	7,081.02	-11,299.08	1,332.69	14,548,898.92	1,744,402.79	40.0602743	-104.6283620	11,249.87	1.21	1.10	-0.49
17,642.00	89.79	178.54	7,079.46	-11,389.02	1,335.47	14,548,809.00	1,744,405.94	40.0600273	-104.6283521	11,339.67	2.76	-2.68	0.69
17,731.00	90.94	178.80	7,078.89	-11,477.99	1,337.54	14,548,720.04	1,744,408.37	40.0597830	-104.6283447	11,428.53	1.32	1.29	0.29
17,821.00	88.57	178.88	7,079.28	-11,567.96	1,339.36	14,548,630.07	1,744,410.56	40.0595359	-104.6283383	11,518.40	2.63	-2.63	0.09
17,911.00	88.95	178.55	7,081.23	-11,657.92	1,341.38	14,548,540.12	1,744,412.95	40.0592888	-104.6283311	11,608.24	0.56	0.42	-0.37
17,972.00	89.52	178.11	7,082.04	-11,718.89	1,343.16	14,548,479.16	1,744,414.98	40.0591214	-104.6283247	11,669.12	1.18	0.93	-0.72
Last Survey 17972.00 'MD													
18,026.00	89.52	178.11	7,082.49	-11,772.86	1,344.94	14,548,425.20	1,744,416.98	40.0589732	-104.6283184	11,723.00	0.00	0.00	0.00
BHL - PTB 18026.00 'MD (86' FNL - 1893 ' FEL) Sec 11													

Design Annotations

Measured Depth (usft)	Vertical Depth (usft)	Local Coordinates +N/-S (usft)	+E/-W (usft)	Comment
100.00	100.00	0.01	-0.03	SHL 1386' FSL & 2034' FWL Sec 35
7,611.11	7,014.44	-1,381.59	1,627.24	Cross Section Line 7611.11 'MD (0' FNL - 1635 ' FEL) Sec 02
7,686.41	7,019.13	-1,456.66	1,624.64	Cross Hard Line Nio 7686.41 'MD (75' FNL - 1637 ' FEL) Sec 02
12,838.05	7,031.63	-6,588.10	1,270.88	Cross Section Line 12838.05 'MD (0' FNL - 1946 ' FEL) Sec 11
17,972.00	7,082.04	-11,718.89	1,343.16	Last Survey 17972.00 'MD
18,026.00	7,082.49	-11,772.86	1,344.94	BHL - PTB 18026.00 'MD (86' FNL - 1893 ' FEL) Sec 11

Checked By: _____ Approved By: _____ Date: _____