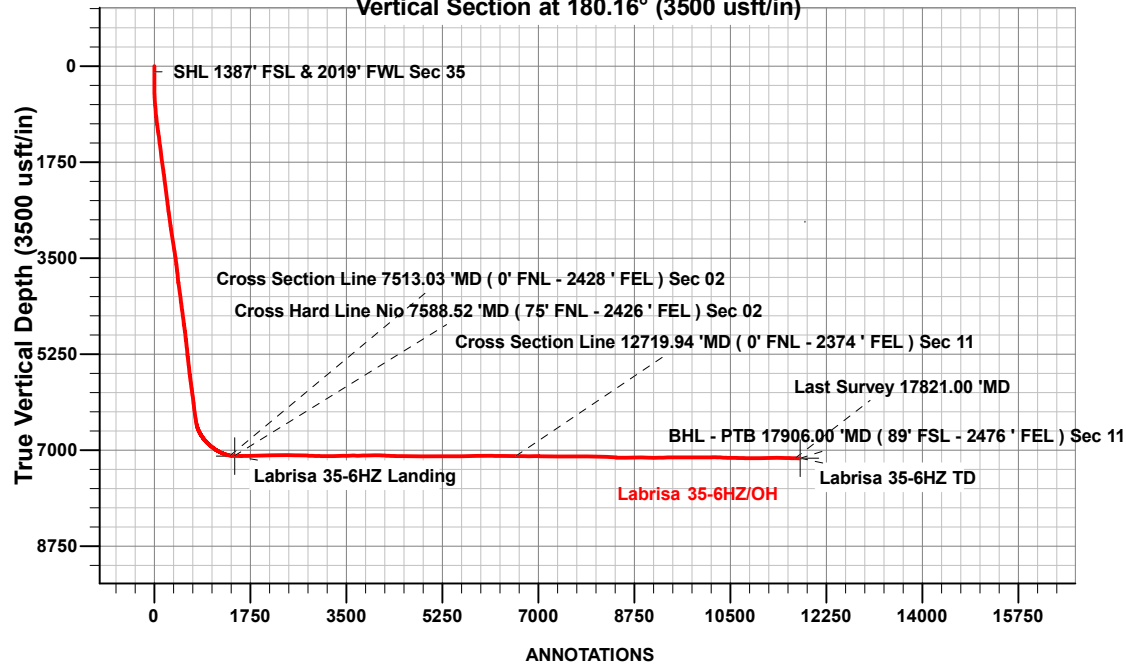


Vertical Section at 180.16° (3500 usft/in)



ANNOTATIONS

MD	Inc	Azi	TVD	+N/-S	+E/-W	VSECT	Departure	Annotation
100.00	0.69	99.89	100.00	-0.18	0.66	0.18	0.69	SHL 1387' FSL & 2019' FWL Sec 35
7513.03	80.46	178.31	7097.71	-1384.04	849.01	1381.66	1725.62	Cross Section Line 7513.03 'MD (0' FNL - 2428 ' FEL) Sec 02
7588.52	87.78	179.24	7105.42	-1459.06	850.63	1456.68	1800.68	Cross Hard Line Nio 7588.52 'MD (75' FNL - 2426 ' FEL) Sec 02
12719.94	90.24	180.53	7106.22	-6588.50	857.28	6586.08	6930.89	Cross Section Line 12719.94 'MD (0' FNL - 2374 ' FEL) Sec 11
17821.00	88.31	181.64	7147.37	-11685.82	778.86	11683.60	12030.51	Last Survey 17821.00 'MD
17906.00	88.31	181.64	7149.88	-11770.75	776.42	11768.53	12115.47	BHL - PTB 17906.00 'MD (89' FSL - 2476 ' FEL) Sec 11

Project: Weld County, CO (UTM-NAD83)
 Site: 2N-65W-35 (Labrisa Pad)
 Well: Labrisa 35-6HZ
 Wellbore: OH
 Design: OH

FORMATION TOP DETAILS

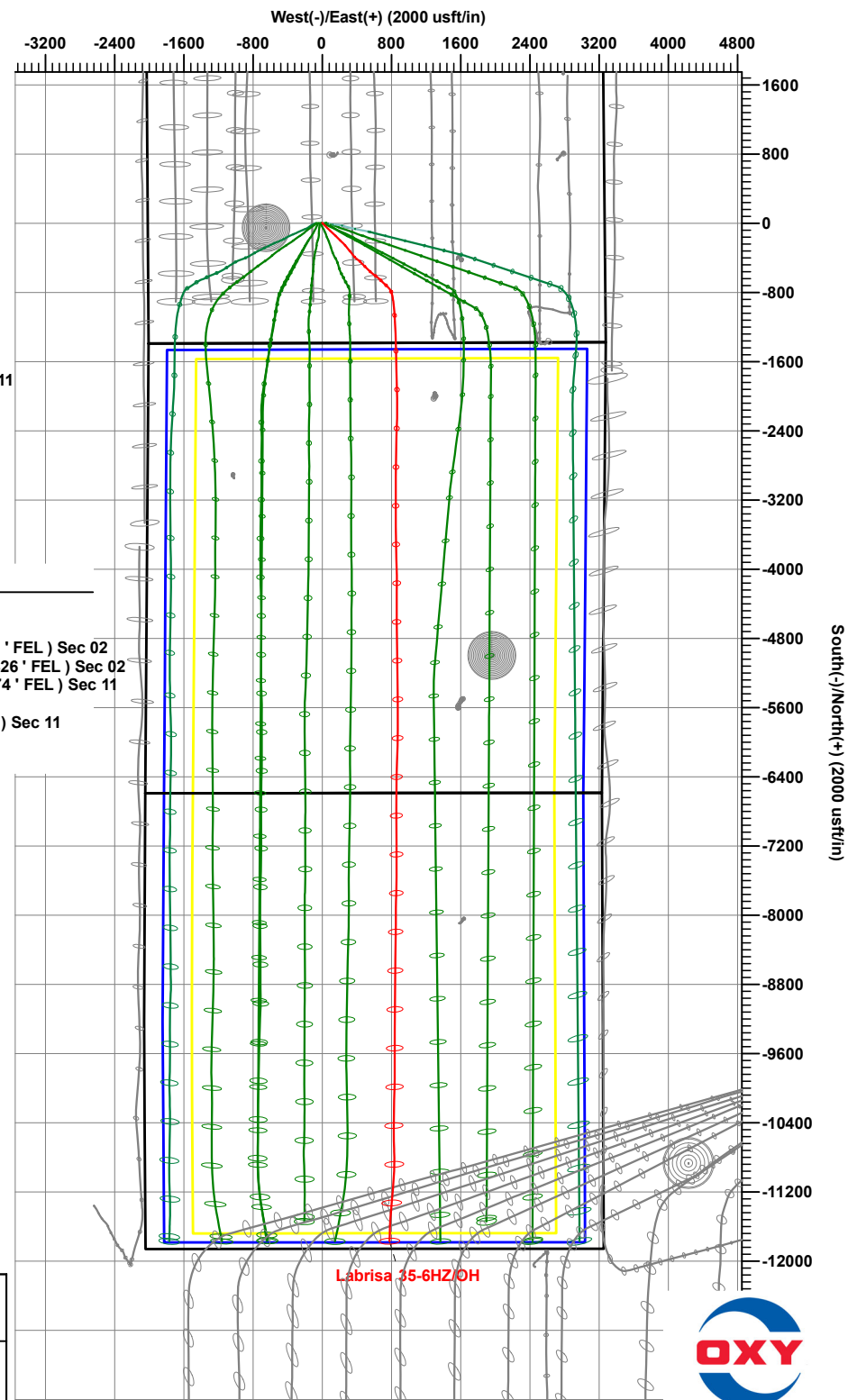
TVDPATH	MDPATH	FORMATION
4027.00	4084.40	PKMN
4387.00	4450.69	SSSX
6886.00	7039.86	SSPG
6913.00	7078.28	NBRR
7011.00	7242.74	N470_B_CK
7073.00	7394.36	N700_C_CK

CASING DETAILS

TVD	MD	Name	Size
2036.00	2058.71	9 5/8"	9-5/8
7145.08	17927.56	Prod Csg	5-1/2

DESIGN TARGET DETAILS

Name	TVD	+N/-S	+E/-W	Northing	Easting	Latitude	Longitude
Labrisa 35-6HZ Landing	7109.10	-1468.97	871.26	14558726.99	1743885.99	40.0872690	-104.6300630
Labrisa 35-6HZ TD	7145.10	-11774.04	842.78	14548421.89	1743900.00	40.0589700	-104.6301660



Occidental Petroleum

Weld County, CO (UTM-NAD83)

2N-65W-35 (Labrisa Pad)

Labrisa 35-6HZ

OH

OH



Standard Survey Report

26 February, 2024

Total Report Version 1.60

COMPASS 5000.16 Build 97

Survey Report

Company:	Occidental Petroleum	Local Co-ordinate Reference:	Well Labrisa 35-6HZ
Project:	Weld County, CO (UTM-NAD83)	TVD Reference:	4970' GL + 26' KB @ 4996.00usft
Site:	2N-65W-35 (Labrisa Pad)	MD Reference:	4970' GL + 26' KB @ 4996.00usft
Well:	Labrisa 35-6HZ	North Reference:	True
Wellbore:	OH	Survey Calculation Method:	Minimum Curvature
Design:	OH	Database:	.Total Directional Production DB

Project	Weld County, CO (UTM-NAD83)		
Map System:	Universal Transverse Mercator (US Survey Feet)	System Datum:	Ground Level
Geo Datum:	North American Datum 1983		
Map Zone:	Zone 13N (108 W to 102 W)		

Site	2N-65W-35 (Labrisa Pad)		
Site Position:		Northing:	14,560,192.78 usft
From:	Map	Easting:	1,742,933.63 usft
Position Uncertainty:	0.00 usft	Slot Radius:	13-3/16 "
		Latitude:	40.0913051
		Longitude:	-104.6334463

Well	Labrisa 35-6HZ		
Well Position	+N/-S	0.00 usft	Northing:
	+E/-W	0.00 usft	Easting:
Position Uncertainty	3.28 usft	Wellhead Elevation:	usft
Grid Convergence:	0.24 °	Ground Level:	4,970.00 usft
		Latitude:	40.0913030
		Longitude:	-104.6331780

Wellbore	OH		
Magnetics	Model Name	Sample Date	Declination
	HDGM2024	2/20/2024	(°)
			7.73
		Dip Angle	(°)
		66.23	
		Field Strength	(nT)
			51,470.00000000

Design	OH		
Audit Notes:			
Version:	1.0	Phase:	ACTUAL
Vertical Section:	Depth From (TVD)	+N/-S	+E/-W
	(usft)	(usft)	(usft)
	0.00	0.00	0.00
		Direction	(°)
			180.16
		Tie On Depth:	0.00

Survey Program	Date	2/26/2024		
From	To	Survey (Wellbore)	Tool Name	Description
(usft)	(usft)			
89.00	2,111.00	OH (OH)	APC_ISCWSA REV 2 MWD+ Fixed:v2:crustal field declination	
2,210.00	17,906.00	Survey #2 (OH)	MWD+IFR1+SAG+MS_Rev ! ISCWSA MWD + IFR1 + Sag Correction + Multi-Station	

Survey													
Measured Depth	INC	AZI	Vertical Depth	Local Coordinates		Map Coordinates		Geo Coordinates		Vertical Section	Dogleg Rate	Build Rate	Turn Rate
(usft)	(°)	(°)	(usft)	+N/-S	+E/-W	Northing	Easting	Latitude	Longitude	(usft)	(°/100usft)	(°/100usft)	(°/100usft)
				(usft)	(usft)	(usft)	(usft)	(°)	(°)				
0.00	0.00	0.00	0.00	0.00	0.00	14,560,192.35	1,743,008.68	40.0913030	-104.6331780	0.00	0.00	0.00	0.00
89.00	0.71	106.15	89.00	-0.15	0.53	14,560,192.20	1,743,009.21	40.0913026	-104.6331761	0.15	0.80	0.80	0.00
100.00	0.69	99.89	100.00	-0.18	0.66	14,560,192.17	1,743,009.34	40.0913025	-104.6331756	0.18	0.73	-0.23	-56.89
SHL 1387' FSL & 2019' FWL Sec 35													
181.00	0.78	52.95	180.99	0.07	1.58	14,560,192.42	1,743,010.26	40.0913032	-104.6331723	-0.07	0.73	0.12	-57.95
272.00	0.23	22.96	271.99	0.61	2.14	14,560,192.96	1,743,010.82	40.0913047	-104.6331703	-0.61	0.65	-0.60	-32.96

Survey Report

Company:	Occidental Petroleum	Local Co-ordinate Reference:	Well Labrisa 35-6HZ
Project:	Weld County, CO (UTM-NAD83)	TVD Reference:	4970' GL + 26' KB @ 4996.00usft
Site:	2N-65W-35 (Labrisa Pad)	MD Reference:	4970' GL + 26' KB @ 4996.00usft
Well:	Labrisa 35-6HZ	North Reference:	True
Wellbore:	OH	Survey Calculation Method:	Minimum Curvature
Design:	OH	Database:	.Total Directional Production DB

Survey													
Measured Depth (usft)	INC (°)	AZI (°)	Vertical Depth (usft)	Local Coordinates +N/-S (usft)	+E/-W (usft)	Map Coordinates Northing (usft)	Easting (usft)	Geo Coordinates Latitude (°)	Longituge (°)	Vertical Section (usft)	Dogleg Rate (°/100usft)	Build Rate (°/100usft)	Turn Rate (°/100usft)
363.00	0.38	16.33	362.99	1.06	2.30	14,560,193.42	1,743,010.98	40.0913060	-104.6331698	-1.07	0.17	0.16	-7.29
452.00	1.16	142.33	451.98	0.63	2.93	14,560,193.00	1,743,011.61	40.0913048	-104.6331675	-0.64	1.59	0.88	141.57
542.00	3.93	144.28	541.88	-2.59	5.29	14,560,189.78	1,743,013.98	40.0912959	-104.6331591	2.58	3.08	3.08	2.17
631.00	5.68	135.21	630.57	-8.19	10.17	14,560,184.20	1,743,018.89	40.0912805	-104.6331416	8.17	2.14	1.97	-10.19
721.00	6.71	134.36	720.04	-15.03	17.07	14,560,177.39	1,743,025.82	40.0912618	-104.6331169	14.98	1.15	1.14	-0.94
810.00	7.52	133.33	808.36	-22.66	25.03	14,560,169.79	1,743,033.80	40.0912408	-104.6330885	22.59	0.92	0.91	-1.16
900.00	7.86	132.30	897.55	-30.85	33.86	14,560,161.64	1,743,042.67	40.0912183	-104.6330569	30.75	0.41	0.38	-1.14
989.00	9.22	135.49	985.56	-40.03	43.36	14,560,152.50	1,743,052.21	40.0911931	-104.6330229	39.90	1.62	1.53	3.58
1,079.00	10.94	138.16	1,074.17	-51.53	54.11	14,560,141.04	1,743,063.01	40.0911615	-104.6329845	51.38	1.98	1.91	2.97
1,168.00	10.55	139.11	1,161.60	-63.98	65.08	14,560,128.64	1,743,074.03	40.0911273	-104.6329453	63.80	0.48	-0.44	1.07
1,258.00	11.38	133.14	1,249.96	-76.28	76.95	14,560,116.38	1,743,085.95	40.0910935	-104.6329028	76.07	1.56	0.92	-6.63
1,347.00	11.37	131.90	1,337.22	-88.15	89.89	14,560,104.57	1,743,098.94	40.0910610	-104.6328566	87.89	0.28	-0.01	-1.39
1,437.00	11.26	131.20	1,425.47	-99.86	103.10	14,560,092.92	1,743,112.20	40.0910288	-104.6328093	99.57	0.20	-0.12	-0.78
1,526.00	10.79	130.12	1,512.82	-110.95	116.01	14,560,081.88	1,743,125.15	40.0909983	-104.6327632	110.63	0.58	-0.53	-1.21
1,616.00	10.73	129.33	1,601.24	-121.69	128.94	14,560,071.19	1,743,138.12	40.0909689	-104.6327170	121.33	0.18	-0.07	-0.88
1,705.00	10.92	133.56	1,688.66	-132.75	141.45	14,560,060.18	1,743,150.68	40.0909385	-104.6326722	132.35	0.92	0.21	4.75
1,795.00	11.03	136.53	1,777.01	-144.87	153.55	14,560,048.11	1,743,162.83	40.0909052	-104.6326289	144.44	0.64	0.12	3.30
1,884.00	11.60	138.09	1,864.28	-157.71	165.39	14,560,035.32	1,743,174.72	40.0908699	-104.6325866	157.25	0.73	0.64	1.75
1,974.00	10.48	135.36	1,952.62	-170.27	177.18	14,560,022.81	1,743,186.57	40.0908355	-104.6325445	169.77	1.37	-1.24	-3.03
2,063.00	9.81	137.17	2,040.23	-181.59	188.03	14,560,011.54	1,743,197.46	40.0908044	-104.6325057	181.06	0.83	-0.75	2.03
2,111.00	10.45	134.57	2,087.48	-187.64	193.91	14,560,005.51	1,743,203.36	40.0907877	-104.6324847	187.10	1.64	1.33	-5.42
2,210.00	10.87	133.05	2,184.77	-200.32	207.12	14,559,992.89	1,743,216.63	40.0907529	-104.6324374	199.74	0.51	0.42	-1.54
2,300.00	10.74	133.73	2,273.17	-211.90	219.39	14,559,981.35	1,743,228.94	40.0907211	-104.6323936	211.29	0.20	-0.14	0.76
2,390.00	10.44	132.87	2,361.64	-223.25	231.42	14,559,970.06	1,743,241.02	40.0906900	-104.6323505	222.60	0.38	-0.33	-0.96
2,479.00	9.96	135.84	2,449.23	-234.26	242.69	14,559,959.09	1,743,252.34	40.0906597	-104.6323102	233.58	0.80	-0.54	3.34
2,569.00	9.74	137.22	2,537.91	-245.43	253.29	14,559,947.97	1,743,262.98	40.0906291	-104.6322724	244.72	0.36	-0.24	1.53
2,658.00	9.36	137.17	2,625.67	-256.26	263.32	14,559,937.18	1,743,273.06	40.0905993	-104.6322365	255.53	0.43	-0.43	-0.06
2,748.00	10.64	143.21	2,714.31	-268.28	273.27	14,559,925.19	1,743,283.06	40.0905663	-104.6322009	267.52	1.84	1.42	6.71
2,837.00	10.12	141.29	2,801.85	-280.97	283.08	14,559,912.55	1,743,292.92	40.0905315	-104.6321658	280.17	0.70	-0.58	-2.16
2,927.00	9.38	140.88	2,890.55	-292.83	292.65	14,559,900.73	1,743,302.54	40.0904989	-104.6321316	292.01	0.83	-0.82	-0.46
3,038.00	12.07	138.69	2,999.60	-308.56	306.03	14,559,885.05	1,743,315.98	40.0904557	-104.6320838	307.71	2.45	2.42	-1.97
3,128.00	11.61	140.36	3,087.69	-322.61	318.01	14,559,871.06	1,743,328.03	40.0904171	-104.6320409	321.72	0.64	-0.51	1.86
3,217.00	11.24	140.37	3,174.92	-336.18	329.26	14,559,857.53	1,743,339.33	40.0903798	-104.6320007	335.26	0.42	-0.42	0.01
3,307.00	11.45	141.19	3,263.16	-349.90	340.45	14,559,843.86	1,743,350.58	40.0903422	-104.6319607	348.95	0.29	0.23	0.91
3,397.00	11.06	144.47	3,351.43	-363.89	351.07	14,559,829.91	1,743,361.25	40.0903038	-104.6319227	362.90	0.83	-0.43	3.64
3,486.00	11.80	139.03	3,438.67	-377.70	362.00	14,559,816.14	1,743,372.24	40.0902658	-104.6318837	376.69	1.47	0.83	-6.11
3,575.00	10.71	137.45	3,525.96	-390.67	373.56	14,559,803.22	1,743,383.85	40.0902302	-104.6318423	389.62	1.27	-1.22	-1.78
3,665.00	9.40	133.77	3,614.57	-401.91	384.52	14,559,792.02	1,743,394.86	40.0901993	-104.6318031	400.84	1.62	-1.46	-4.09

Survey Report

Company:	Occidental Petroleum	Local Co-ordinate Reference:	Well Labrisa 35-6HZ
Project:	Weld County, CO (UTM-NAD83)	TVD Reference:	4970' GL + 26' KB @ 4996.00usft
Site:	2N-65W-35 (Labrisa Pad)	MD Reference:	4970' GL + 26' KB @ 4996.00usft
Well:	Labrisa 35-6HZ	North Reference:	True
Wellbore:	OH	Survey Calculation Method:	Minimum Curvature
Design:	OH	Database:	.Total Directional Production DB

Survey													
Measured Depth (usft)	INC (°)	AZI (°)	Vertical Depth (usft)	Local Coordinates +N/-S (usft)	+E/-W (usft)	Map Coordinates Northing (usft)	Easting (usft)	Geo Coordinates Latitude (°)	Longituge (°)	Vertical Section (usft)	Dogleg Rate (°/100usft)	Build Rate (°/100usft)	Turn Rate (°/100usft)
3,755.00	11.22	128.09	3,703.12	-412.40	396.72	14,559,781.59	1,743,407.10	40.0901705	-104.6317595	411.29	2.31	2.02	-6.31
3,844.00	9.85	127.82	3,790.62	-422.41	409.55	14,559,771.63	1,743,419.97	40.0901430	-104.6317137	421.27	1.54	-1.54	-0.30
3,934.00	8.86	125.13	3,879.42	-431.12	421.30	14,559,762.97	1,743,431.76	40.0901191	-104.6316716	429.94	1.20	-1.10	-2.99
4,024.00	11.86	135.39	3,967.95	-441.70	433.47	14,559,752.45	1,743,443.97	40.0900901	-104.6316281	440.48	3.90	3.33	11.40
4,113.00	11.49	136.43	4,055.11	-454.63	446.00	14,559,739.56	1,743,456.55	40.0900546	-104.6315833	453.38	0.48	-0.42	1.17
4,203.00	10.83	135.54	4,143.41	-467.16	458.10	14,559,727.08	1,743,468.71	40.0900201	-104.6315401	465.88	0.76	-0.73	-0.99
4,292.00	10.10	135.85	4,230.93	-478.73	469.39	14,559,715.56	1,743,480.05	40.0899884	-104.6314997	477.41	0.82	-0.82	0.35
4,382.00	8.96	135.49	4,319.68	-489.39	479.80	14,559,704.95	1,743,490.50	40.0899591	-104.6314625	488.04	1.27	-1.27	-0.40
4,471.00	12.11	134.28	4,407.17	-500.85	491.35	14,559,693.53	1,743,502.09	40.0899276	-104.6314212	499.48	3.55	3.54	-1.36
4,561.00	11.18	134.41	4,495.32	-513.55	504.34	14,559,680.89	1,743,515.14	40.0898928	-104.6313747	512.14	1.03	-1.03	0.14
4,650.00	10.37	133.55	4,582.75	-525.10	516.31	14,559,669.38	1,743,527.15	40.0898610	-104.6313320	523.66	0.93	-0.91	-0.97
4,740.00	9.72	134.54	4,671.37	-536.01	527.59	14,559,658.52	1,743,538.48	40.0898311	-104.6312916	534.54	0.75	-0.72	1.10
4,830.00	12.18	135.05	4,759.72	-548.06	539.72	14,559,646.52	1,743,550.66	40.0897980	-104.6312483	546.55	2.74	2.73	0.57
4,919.00	10.85	131.75	4,846.93	-560.29	552.60	14,559,634.35	1,743,563.59	40.0897644	-104.6312022	558.74	1.67	-1.49	-3.71
5,009.00	9.03	129.97	4,935.58	-570.47	564.34	14,559,624.22	1,743,575.37	40.0897365	-104.6311602	568.89	2.05	-2.02	-1.98
5,098.00	11.44	129.81	5,023.15	-580.60	576.47	14,559,614.13	1,743,587.54	40.0897086	-104.6311169	578.99	2.71	2.71	-0.18
5,188.00	10.16	126.77	5,111.56	-591.07	589.69	14,559,603.72	1,743,600.80	40.0896799	-104.6310696	589.42	1.56	-1.42	-3.38
5,277.00	8.78	123.15	5,199.34	-599.48	601.66	14,559,595.35	1,743,612.81	40.0896568	-104.6310268	597.80	1.69	-1.55	-4.07
5,367.00	11.45	129.43	5,287.94	-608.92	614.31	14,559,585.97	1,743,625.50	40.0896309	-104.6309815	607.20	3.21	2.97	6.98
5,457.00	9.73	127.46	5,376.40	-619.22	627.25	14,559,575.72	1,743,638.48	40.0896026	-104.6309353	617.46	1.95	-1.91	-2.19
5,546.00	10.84	129.49	5,463.97	-629.11	639.68	14,559,565.88	1,743,650.95	40.0895754	-104.6308909	627.32	1.31	1.25	2.28
5,636.00	9.35	125.92	5,552.58	-638.78	652.13	14,559,556.26	1,743,663.45	40.0895488	-104.6308463	636.96	1.79	-1.66	-3.97
5,726.00	11.47	135.36	5,641.10	-649.44	664.34	14,559,545.65	1,743,675.70	40.0895196	-104.6308027	647.59	3.02	2.36	10.49
5,815.00	9.99	133.44	5,728.54	-661.05	676.17	14,559,534.10	1,743,687.57	40.0894877	-104.6307604	659.16	1.71	-1.66	-2.16
5,905.00	11.58	136.27	5,816.95	-672.94	688.08	14,559,522.25	1,743,699.53	40.0894550	-104.6307178	671.02	1.86	1.77	3.14
5,994.00	10.14	135.00	5,904.35	-684.94	699.80	14,559,510.30	1,743,711.30	40.0894221	-104.6306759	682.98	1.64	-1.62	-1.43
6,084.00	11.92	134.18	5,992.68	-697.02	712.07	14,559,498.27	1,743,723.62	40.0893889	-104.6306321	695.03	1.99	1.98	-0.91
6,174.00	10.69	131.44	6,080.94	-709.02	724.99	14,559,486.32	1,743,736.59	40.0893559	-104.6305858	706.99	1.49	-1.37	-3.04
6,263.00	9.10	128.21	6,168.61	-718.84	736.71	14,559,476.55	1,743,748.35	40.0893290	-104.6305440	716.78	1.89	-1.79	-3.63
6,353.00	10.42	136.66	6,257.31	-729.16	747.89	14,559,466.28	1,743,759.57	40.0893006	-104.6305040	727.07	2.16	1.47	9.39
6,443.00	10.95	139.20	6,345.75	-741.55	759.06	14,559,453.93	1,743,770.79	40.0892666	-104.6304640	739.43	0.79	0.59	2.82
6,532.00	11.54	136.56	6,433.04	-754.42	770.70	14,559,441.12	1,743,782.49	40.0892313	-104.6304224	752.26	0.88	0.66	-2.97
6,622.00	13.74	144.71	6,520.86	-769.68	783.07	14,559,425.91	1,743,794.92	40.0891894	-104.6303782	767.49	3.14	2.44	9.06
6,711.00	21.82	157.33	6,605.57	-793.62	795.58	14,559,402.02	1,743,807.53	40.0891236	-104.6303335	791.39	10.01	9.08	14.18
6,801.00	29.44	166.76	6,686.69	-830.65	807.11	14,559,365.03	1,743,819.21	40.0890219	-104.6302922	828.39	9.58	8.47	10.48
6,891.00	35.41	171.20	6,762.64	-878.00	816.18	14,559,317.72	1,743,828.47	40.0888919	-104.6302598	875.71	7.14	6.63	4.93
6,980.00	42.84	174.44	6,831.64	-933.68	823.06	14,559,262.07	1,743,835.59	40.0887390	-104.6302352	931.38	8.66	8.35	3.64

Survey Report

Company:	Occidental Petroleum	Local Co-ordinate Reference:	Well Labrisa 35-6HZ
Project:	Weld County, CO (UTM-NAD83)	TVD Reference:	4970' GL + 26' KB @ 4996.00usft
Site:	2N-65W-35 (Labrisa Pad)	MD Reference:	4970' GL + 26' KB @ 4996.00usft
Well:	Labrisa 35-6HZ	North Reference:	True
Wellbore:	OH	Survey Calculation Method:	Minimum Curvature
Design:	OH	Database:	.Total Directional Production DB

Survey													
Measured Depth (usft)	INC (°)	AZI (°)	Vertical Depth (usft)	Local Coordinates +N/-S (usft)	+E/-W (usft)	Map Coordinates Northing (usft)	Easting (usft)	Geo Coordinates Latitude (°)	Longituge (°)	Vertical Section (usft)	Dogleg Rate (°/100usft)	Build Rate (°/100usft)	Turn Rate (°/100usft)
7,069.00	48.23	174.75	6,893.96	-996.89	829.03	14,559,198.89	1,743,841.82	40.0885654	-104.6302139	994.57	6.06	6.06	0.35
7,159.00	51.25	175.58	6,952.11	-1,065.32	834.81	14,559,130.48	1,743,847.88	40.0883775	-104.6301932	1,062.98	3.43	3.36	0.92
7,248.00	59.47	176.49	7,002.66	-1,138.30	839.84	14,559,057.52	1,743,853.21	40.0881771	-104.6301753	1,135.96	9.27	9.24	1.02
7,338.00	65.49	177.99	7,044.23	-1,217.99	843.65	14,558,977.85	1,743,857.35	40.0879582	-104.6301616	1,215.63	6.85	6.69	1.67
7,427.00	71.47	178.15	7,076.86	-1,300.70	846.44	14,558,895.15	1,743,860.48	40.0877311	-104.6301517	1,298.33	6.72	6.72	0.18
7,513.03	80.46	178.31	7,097.71	-1,384.04	849.01	14,558,811.82	1,743,863.39	40.0875023	-104.6301425	1,381.66	10.45	10.44	0.19
Cross Section Line 7513.03 'MD (0' FNL - 2428' FEL) Sec 02													
7,517.00	80.87	178.32	7,098.35	-1,387.95	849.13	14,558,807.91	1,743,863.53	40.0874915	-104.6301421	1,385.58	10.45	10.44	0.18
7,588.52	87.78	179.24	7,105.42	-1,459.06	850.63	14,558,736.81	1,743,865.33	40.0872962	-104.6301367	1,456.68	9.74	9.66	1.29
Cross Hard Line Nio 7588.52 'MD (75' FNL - 2426' FEL) Sec 02													
7,607.00	89.56	179.48	7,105.85	-1,477.54	850.84	14,558,718.33	1,743,865.61	40.0872455	-104.6301360	1,475.15	9.74	9.66	1.28
7,696.00	91.13	179.59	7,105.32	-1,566.53	851.56	14,558,629.35	1,743,866.70	40.0870011	-104.6301334	1,564.14	1.77	1.76	0.12
7,786.00	90.59	177.56	7,103.97	-1,656.49	853.80	14,558,539.40	1,743,869.31	40.0867541	-104.6301254	1,654.09	2.33	-0.60	-2.26
7,875.00	90.59	176.70	7,103.05	-1,745.37	858.26	14,558,450.54	1,743,874.13	40.0865100	-104.6301095	1,742.96	0.97	0.00	-0.97
7,965.00	91.19	179.19	7,101.65	-1,835.29	861.48	14,558,360.63	1,743,877.73	40.0862631	-104.6300980	1,832.88	2.85	0.67	2.77
8,054.00	92.85	178.58	7,098.51	-1,924.22	863.21	14,558,271.71	1,743,879.82	40.0860189	-104.6300918	1,921.80	1.99	1.87	-0.69
8,143.00	91.59	179.88	7,095.07	-2,013.14	864.41	14,558,182.79	1,743,881.39	40.0857747	-104.6300875	2,010.72	2.03	-1.42	1.46
8,233.00	89.63	180.17	7,094.11	-2,103.13	864.37	14,558,092.80	1,743,881.72	40.0855276	-104.6300877	2,100.71	2.20	-2.18	0.32
8,323.00	90.96	180.76	7,093.64	-2,193.12	863.64	14,558,002.81	1,743,881.36	40.0852804	-104.6300903	2,190.70	1.62	1.48	0.66
8,412.00	89.90	181.08	7,092.98	-2,282.11	862.21	14,557,913.82	1,743,880.30	40.0850361	-104.6300954	2,279.69	1.24	-1.19	0.36
8,502.00	91.99	182.44	7,091.49	-2,372.04	859.45	14,557,823.87	1,743,877.90	40.0847891	-104.6301053	2,369.64	2.77	2.32	1.51
8,591.00	89.55	181.14	7,090.30	-2,460.98	856.67	14,557,734.92	1,743,875.49	40.0845448	-104.6301153	2,458.58	3.11	-2.74	-1.46
8,681.00	88.39	180.64	7,091.91	-2,550.96	855.27	14,557,644.94	1,743,874.46	40.0842978	-104.6301203	2,548.56	1.40	-1.29	-0.56
8,770.00	89.03	180.82	7,093.92	-2,639.93	854.14	14,557,555.97	1,743,873.70	40.0840534	-104.6301243	2,637.53	0.75	0.72	0.20
8,860.00	88.11	180.81	7,096.16	-2,729.89	852.86	14,557,466.00	1,743,872.79	40.0838064	-104.6301289	2,727.50	1.02	-1.02	-0.01
8,950.00	87.26	180.84	7,099.80	-2,819.81	851.56	14,557,376.08	1,743,871.86	40.0835595	-104.6301336	2,817.42	0.95	-0.94	0.03
9,039.00	88.51	180.90	7,103.08	-2,908.73	850.21	14,557,287.15	1,743,870.88	40.0833153	-104.6301384	2,906.35	1.41	1.40	0.07
9,129.00	88.71	180.73	7,105.27	-2,998.70	848.93	14,557,197.18	1,743,869.97	40.0830682	-104.6301430	2,996.31	0.29	0.22	-0.19
9,219.00	88.44	180.38	7,107.50	-3,088.66	848.06	14,557,107.21	1,743,869.47	40.0828212	-104.6301461	3,086.28	0.49	-0.30	-0.39
9,308.00	90.87	180.48	7,108.04	-3,177.65	847.39	14,557,018.22	1,743,869.17	40.0825768	-104.6301485	3,175.27	2.73	2.73	0.11
9,398.00	91.15	179.39	7,106.45	-3,267.64	847.49	14,556,928.23	1,743,869.64	40.0823297	-104.6301482	3,265.26	1.25	0.31	-1.21
9,487.00	92.16	178.93	7,103.88	-3,356.59	848.80	14,556,839.29	1,743,871.31	40.0820854	-104.6301435	3,354.21	1.25	1.13	-0.52
9,577.00	90.94	179.41	7,101.45	-3,446.55	850.10	14,556,749.34	1,743,872.99	40.0818384	-104.6301389	3,444.16	1.46	-1.36	0.53
9,666.00	91.76	179.56	7,099.35	-3,535.52	850.90	14,556,660.37	1,743,874.16	40.0815940	-104.6301360	3,533.13	0.94	0.92	0.17
9,756.00	89.23	180.00	7,098.57	-3,625.51	851.25	14,556,570.39	1,743,874.87	40.0813469	-104.6301348	3,623.11	2.85	-2.81	0.49
9,845.00	89.58	179.64	7,099.50	-3,714.50	851.53	14,556,481.39	1,743,875.52	40.0811025	-104.6301338	3,712.11	0.56	0.39	-0.40
9,935.00	91.68	178.87	7,098.51	-3,804.48	852.70	14,556,391.42	1,743,877.06	40.0808554	-104.6301296	3,802.08	2.49	2.33	-0.86
10,024.00	90.21	177.47	7,097.04	-3,893.42	855.54	14,556,302.49	1,743,880.27	40.0806112	-104.6301195	3,891.01	2.28	-1.65	-1.57

Survey Report

Company:	Occidental Petroleum	Local Co-ordinate Reference:	Well Labrisa 35-6HZ
Project:	Weld County, CO (UTM-NAD83)	TVD Reference:	4970' GL + 26' KB @ 4996.00usft
Site:	2N-65W-35 (Labrisa Pad)	MD Reference:	4970' GL + 26' KB @ 4996.00usft
Well:	Labrisa 35-6HZ	North Reference:	True
Wellbore:	OH	Survey Calculation Method:	Minimum Curvature
Design:	OH	Database:	.Total Directional Production DB

Survey													
Measured Depth (usft)	INC (°)	AZI (°)	Vertical Depth (usft)	Local Coordinates +N/-S (usft)	Local Coordinates +E/-W (usft)	Map Coordinates Northing (usft)	Map Coordinates Easting (usft)	Geo Coordinates Latitude (°)	Geo Coordinates Longitude (°)	Vertical Section (usft)	Dogleg Rate (°/100usft)	Build Rate (°/100usft)	Turn Rate (°/100usft)
10,114.00	92.02	178.36	7,095.29	-3,983.34	858.81	14,556,212.59	1,743,883.91	40.0803643	-104.6301078	3,980.92	2.24	2.01	0.99
10,204.00	89.38	179.35	7,094.19	-4,073.30	860.61	14,556,122.63	1,743,886.08	40.0801172	-104.6301014	4,070.88	3.13	-2.93	1.10
10,293.00	87.42	180.76	7,096.68	-4,162.26	860.52	14,556,033.67	1,743,886.36	40.0798729	-104.6301017	4,159.84	2.71	-2.20	1.58
10,383.00	87.74	180.23	7,100.48	-4,252.18	859.75	14,555,943.75	1,743,885.96	40.0796260	-104.6301045	4,249.76	0.69	0.36	-0.59
10,473.00	87.44	179.63	7,104.26	-4,342.10	859.86	14,555,853.83	1,743,886.44	40.0793791	-104.6301041	4,339.68	0.74	-0.33	-0.67
10,562.00	89.11	180.67	7,106.94	-4,431.05	859.62	14,555,764.88	1,743,886.57	40.0791348	-104.6301049	4,428.64	2.21	1.88	1.17
10,652.00	88.85	180.18	7,108.54	-4,521.04	858.96	14,555,674.89	1,743,886.27	40.0788877	-104.6301073	4,518.62	0.62	-0.29	-0.54
10,741.00	89.11	179.81	7,110.13	-4,610.02	858.96	14,555,585.91	1,743,886.65	40.0786433	-104.6301073	4,607.61	0.51	0.29	-0.42
10,831.00	89.50	178.99	7,111.22	-4,700.01	859.91	14,555,495.93	1,743,887.96	40.0783962	-104.6301039	4,697.59	1.01	0.43	-0.91
10,921.00	90.44	178.23	7,111.27	-4,789.98	862.09	14,555,405.96	1,743,890.52	40.0781491	-104.6300962	4,787.55	1.34	1.04	-0.84
11,010.00	90.61	179.71	7,110.45	-4,878.96	863.69	14,555,316.99	1,743,892.48	40.0779048	-104.6300904	4,876.53	1.67	0.19	1.66
11,100.00	89.56	179.43	7,110.32	-4,968.96	864.36	14,555,227.00	1,743,893.53	40.0776576	-104.6300880	4,966.52	1.21	-1.17	-0.31
11,189.00	89.43	178.79	7,111.10	-5,057.94	865.75	14,555,138.02	1,743,895.28	40.0774133	-104.6300831	5,055.50	0.73	-0.15	-0.72
11,279.00	89.12	179.32	7,112.24	-5,147.92	867.23	14,555,048.05	1,743,897.13	40.0771662	-104.6300778	5,145.48	0.68	-0.34	0.59
11,369.00	90.25	178.99	7,112.73	-5,237.91	868.56	14,554,958.07	1,743,898.83	40.0769191	-104.6300731	5,235.46	1.31	1.26	-0.37
11,458.00	90.38	178.47	7,112.24	-5,326.89	870.53	14,554,869.10	1,743,901.17	40.0766747	-104.6300660	5,324.43	0.60	0.15	-0.58
11,548.00	89.89	180.17	7,112.03	-5,416.88	871.60	14,554,779.11	1,743,902.61	40.0764276	-104.6300622	5,414.42	1.97	-0.54	1.89
11,637.00	90.52	179.95	7,111.71	-5,505.87	871.51	14,554,690.12	1,743,902.89	40.0761832	-104.6300626	5,503.42	0.75	0.71	-0.25
11,727.00	91.86	179.64	7,109.85	-5,595.85	871.83	14,554,600.14	1,743,903.58	40.0759361	-104.6300614	5,593.40	1.53	1.49	-0.34
11,817.00	90.77	180.20	7,107.78	-5,685.83	871.95	14,554,510.17	1,743,904.07	40.0756890	-104.6300610	5,683.37	1.36	-1.21	0.62
11,906.00	92.18	180.11	7,105.49	-5,774.79	871.71	14,554,421.20	1,743,904.20	40.0754447	-104.6300619	5,772.34	1.59	1.58	-0.10
11,996.00	90.67	180.39	7,103.25	-5,864.76	871.32	14,554,331.23	1,743,904.18	40.0751976	-104.6300633	5,862.31	1.71	-1.68	0.31
12,085.00	89.86	181.25	7,102.84	-5,953.75	870.05	14,554,242.24	1,743,903.27	40.0749533	-104.6300678	5,951.30	1.33	-0.91	0.97
12,175.00	90.86	181.03	7,102.27	-6,043.73	868.26	14,554,152.25	1,743,901.85	40.0747062	-104.6300743	6,041.28	1.14	1.11	-0.24
12,264.00	89.61	181.37	7,101.91	-6,132.71	866.39	14,554,063.27	1,743,900.36	40.0744618	-104.6300809	6,130.27	1.46	-1.40	0.38
12,354.00	88.49	182.08	7,103.40	-6,222.65	863.68	14,553,973.31	1,743,898.02	40.0742148	-104.6300906	6,220.22	1.47	-1.24	0.79
12,444.00	90.84	181.00	7,103.93	-6,312.61	861.26	14,553,883.34	1,743,895.97	40.0739678	-104.6300993	6,310.18	2.87	2.61	-1.20
12,534.00	88.64	181.14	7,104.34	-6,402.59	859.58	14,553,793.36	1,743,894.66	40.0737207	-104.6301053	6,400.16	2.45	-2.44	0.16
12,623.00	89.25	180.62	7,105.97	-6,491.56	858.22	14,553,704.38	1,743,893.66	40.0734764	-104.6301102	6,489.14	0.90	0.69	-0.58
12,713.00	90.39	180.50	7,106.26	-6,581.56	857.34	14,553,614.38	1,743,893.15	40.0732292	-104.6301133	6,579.14	1.27	1.27	-0.13
12,719.94	90.24	180.53	7,106.22	-6,588.50	857.28	14,553,607.44	1,743,893.12	40.0732102	-104.6301136	6,586.08	2.16	-2.12	0.41
Cross Section Line 12719.94 'MD (0' FNL - 2374 ' FEL) Sec 11													
12,803.00	88.48	180.87	7,107.14	-6,671.54	856.26	14,553,524.39	1,743,892.45	40.0729821	-104.6301172	6,669.12	2.16	-2.12	0.41
12,892.00	88.61	179.96	7,109.40	-6,760.51	855.62	14,553,435.43	1,743,892.17	40.0727378	-104.6301195	6,758.09	1.03	0.15	-1.02
12,982.00	90.09	179.82	7,110.43	-6,850.50	855.79	14,553,345.43	1,743,892.71	40.0724907	-104.6301189	6,848.08	1.65	1.64	-0.16
13,072.00	91.14	179.40	7,109.46	-6,940.49	856.40	14,553,255.45	1,743,893.70	40.0722436	-104.6301167	6,938.07	1.26	1.17	-0.47
13,161.00	88.08	180.32	7,110.07	-7,029.48	856.62	14,553,166.46	1,743,894.28	40.0719992	-104.6301160	7,027.06	3.59	-3.44	1.03
13,251.00	88.63	180.11	7,112.65	-7,119.44	856.28	14,553,076.50	1,743,894.32	40.0717521	-104.6301172	7,117.02	0.65	0.61	-0.23

Survey Report

Company:	Occidental Petroleum	Local Co-ordinate Reference:	Well Labrisa 35-6HZ
Project:	Weld County, CO (UTM-NAD83)	TVD Reference:	4970' GL + 26' KB @ 4996.00usft
Site:	2N-65W-35 (Labrisa Pad)	MD Reference:	4970' GL + 26' KB @ 4996.00usft
Well:	Labrisa 35-6HZ	North Reference:	True
Wellbore:	OH	Survey Calculation Method:	Minimum Curvature
Design:	OH	Database:	.Total Directional Production DB

Survey													
Measured Depth (usft)	INC (°)	AZI (°)	Vertical Depth (usft)	Local Coordinates +N/-S (usft)	+E/-W (usft)	Map Coordinates Northing (usft)	Easting (usft)	Geo Coordinates Latitude (°)	Longituge (°)	Vertical Section (usft)	Dogleg Rate (°/100usft)	Build Rate (°/100usft)	Turn Rate (°/100usft)
13,340.00	89.02	179.95	7,114.47	-7,208.42	856.24	14,552,987.52	1,743,894.64	40.0715078	-104.6301174	7,206.00	0.47	0.44	-0.18
13,430.00	89.89	179.46	7,115.33	-7,298.42	856.70	14,552,897.53	1,743,895.47	40.0712607	-104.6301157	7,295.99	1.11	0.97	-0.54
13,519.00	91.06	178.31	7,114.59	-7,387.39	858.43	14,552,808.56	1,743,897.57	40.0710163	-104.6301095	7,384.97	1.84	1.31	-1.29
13,608.00	89.66	180.64	7,114.03	-7,476.38	859.25	14,552,719.58	1,743,898.75	40.0707719	-104.6301066	7,473.95	3.05	-1.57	2.62
13,698.00	91.24	180.15	7,113.33	-7,566.37	858.63	14,552,629.58	1,743,898.50	40.0705248	-104.6301089	7,563.94	1.84	1.76	-0.54
13,788.00	88.61	181.52	7,113.44	-7,656.35	857.32	14,552,539.60	1,743,897.56	40.0702777	-104.6301136	7,653.93	3.29	-2.92	1.52
13,878.00	89.65	181.82	7,114.81	-7,746.30	854.69	14,552,449.64	1,743,895.31	40.0700307	-104.6301229	7,743.88	1.20	1.16	0.33
13,967.00	90.55	181.61	7,114.65	-7,835.26	852.03	14,552,360.67	1,743,893.01	40.0697864	-104.6301325	7,832.85	1.04	1.01	-0.24
14,057.00	91.06	180.66	7,113.39	-7,925.23	850.25	14,552,270.69	1,743,891.60	40.0695393	-104.6301389	7,922.83	1.20	0.57	-1.06
14,147.00	87.74	180.59	7,114.33	-8,015.21	849.26	14,552,180.71	1,743,890.99	40.0692923	-104.6301424	8,012.81	3.69	-3.69	-0.08
14,236.00	87.16	180.56	7,118.29	-8,104.12	848.37	14,552,091.80	1,743,890.47	40.0690481	-104.6301456	8,101.72	0.65	-0.65	-0.03
14,326.00	87.09	180.46	7,122.81	-8,194.00	847.57	14,552,001.91	1,743,890.04	40.0688013	-104.6301484	8,191.60	0.14	-0.08	-0.11
14,416.00	87.00	180.62	7,127.45	-8,283.88	846.73	14,551,912.04	1,743,889.56	40.0685545	-104.6301515	8,281.48	0.20	-0.10	0.18
14,505.00	87.14	180.36	7,132.00	-8,372.76	845.97	14,551,823.15	1,743,889.17	40.0683104	-104.6301542	8,370.36	0.33	0.16	-0.29
14,595.00	89.19	180.98	7,134.88	-8,462.70	844.91	14,551,733.21	1,743,888.48	40.0680634	-104.6301580	8,460.31	2.38	2.28	0.69
14,685.00	89.61	180.66	7,135.82	-8,552.68	843.63	14,551,643.22	1,743,887.57	40.0678163	-104.6301626	8,550.29	0.59	0.47	-0.36
14,774.00	89.76	180.44	7,136.31	-8,641.68	842.77	14,551,554.22	1,743,887.08	40.0675719	-104.6301657	8,639.29	0.30	0.17	-0.25
14,864.00	91.01	180.56	7,135.70	-8,731.67	841.99	14,551,464.22	1,743,886.67	40.0673248	-104.6301685	8,729.29	1.40	1.39	0.13
14,954.00	92.27	180.58	7,133.13	-8,821.63	841.09	14,551,374.26	1,743,886.14	40.0670777	-104.6301717	8,819.25	1.40	1.40	0.02
15,044.00	88.16	180.34	7,132.79	-8,911.61	840.37	14,551,284.29	1,743,885.79	40.0668306	-104.6301743	8,909.22	4.57	-4.57	-0.27
15,133.00	88.07	180.22	7,135.72	-9,000.56	839.93	14,551,195.33	1,743,885.72	40.0665864	-104.6301758	8,998.18	0.17	-0.10	-0.13
15,223.00	89.33	180.62	7,137.76	-9,090.53	839.27	14,551,105.36	1,743,885.43	40.0663393	-104.6301782	9,088.15	1.47	1.40	0.44
15,312.00	91.01	180.95	7,137.50	-9,179.52	838.05	14,551,016.37	1,743,884.58	40.0660949	-104.6301826	9,177.14	1.92	1.89	0.37
15,402.00	92.09	180.60	7,135.06	-9,269.47	836.84	14,550,926.41	1,743,883.74	40.0658479	-104.6301869	9,267.10	1.26	1.20	-0.39
15,492.00	90.11	180.10	7,133.33	-9,359.45	836.29	14,550,836.43	1,743,883.56	40.0656008	-104.6301889	9,357.08	2.27	-2.20	-0.56
15,581.00	90.58	179.81	7,132.80	-9,448.45	836.36	14,550,747.43	1,743,883.99	40.0653564	-104.6301887	9,446.08	0.62	0.53	-0.33
15,671.00	91.46	179.96	7,131.20	-9,538.43	836.54	14,550,657.45	1,743,884.55	40.0651093	-104.6301880	9,536.06	0.99	0.98	0.17
15,760.00	88.98	179.85	7,130.85	-9,627.43	836.69	14,550,568.46	1,743,885.06	40.0648649	-104.6301875	9,625.05	2.79	-2.79	-0.12
15,850.00	88.36	179.72	7,132.94	-9,717.40	837.02	14,550,478.48	1,743,885.77	40.0646178	-104.6301863	9,715.03	0.70	-0.69	-0.14
15,939.00	90.36	180.21	7,133.94	-9,806.39	837.08	14,550,389.49	1,743,886.19	40.0643734	-104.6301861	9,804.01	2.31	2.25	0.55
16,029.00	91.66	180.81	7,132.35	-9,896.37	836.28	14,550,299.51	1,743,885.76	40.0641263	-104.6301890	9,894.00	1.59	1.44	0.67
16,119.00	89.27	181.18	7,131.62	-9,986.35	834.71	14,550,209.53	1,743,884.57	40.0638793	-104.6301946	9,983.98	2.69	-2.66	0.41
16,208.00	90.33	181.45	7,131.93	-10,075.32	832.67	14,550,120.55	1,743,882.89	40.0636349	-104.6302019	10,072.96	1.23	1.19	0.30
16,298.00	91.48	181.86	7,130.51	-10,165.27	830.07	14,550,030.59	1,743,880.67	40.0633879	-104.6302112	10,162.91	1.36	1.28	0.46
16,387.00	88.27	180.57	7,130.70	-10,254.24	828.19	14,549,941.61	1,743,879.15	40.0631436	-104.6302180	10,251.88	3.89	-3.61	-1.45
16,477.00	87.89	180.42	7,133.72	-10,344.18	827.41	14,549,851.67	1,743,878.74	40.0628966	-104.6302207	10,341.83	0.45	-0.42	-0.17
16,567.00	87.45	180.08	7,137.38	-10,434.11	827.02	14,549,761.74	1,743,878.72	40.0626496	-104.6302222	10,431.76	0.62	-0.49	-0.38

Survey Report

Company:	Occidental Petroleum	Local Co-ordinate Reference:	Well Labrisa 35-6HZ
Project:	Weld County, CO (UTM-NAD83)	TVD Reference:	4970' GL + 26' KB @ 4996.00usft
Site:	2N-65W-35 (Labrisa Pad)	MD Reference:	4970' GL + 26' KB @ 4996.00usft
Well:	Labrisa 35-6HZ	North Reference:	True
Wellbore:	OH	Survey Calculation Method:	Minimum Curvature
Design:	OH	Database:	.Total Directional Production DB

Survey

Measured Depth (usft)	INC (°)	AZI (°)	Vertical Depth (usft)	Local Coordinates +N/-S (usft)	+E/-W (usft)	Map Coordinates Northing (usft)	Easting (usft)	Geo Coordinates Latitude (°)	Longitude (°)	Vertical Section (usft)	Dogleg Rate (°/100usft)	Build Rate (°/100usft)	Turn Rate (°/100usft)
16,656.00	89.38	180.03	7,139.84	-10,523.07	826.93	14,549,672.78	1,743,879.00	40.0624053	-104.6302225	10,520.72	2.17	2.17	-0.06
16,746.00	89.35	179.13	7,140.84	-10,613.06	827.59	14,549,582.79	1,743,880.03	40.0621582	-104.6302201	10,610.71	1.00	-0.03	-1.00
16,836.00	87.77	178.48	7,143.10	-10,703.01	829.47	14,549,492.85	1,743,882.28	40.0619112	-104.6302134	10,700.65	1.90	-1.76	-0.72
16,925.00	90.09	179.81	7,144.76	-10,791.98	830.79	14,549,403.89	1,743,883.97	40.0616669	-104.6302087	10,789.61	3.00	2.61	1.49
17,015.00	89.65	180.02	7,144.97	-10,881.98	830.93	14,549,313.89	1,743,884.48	40.0614197	-104.6302082	10,879.61	0.54	-0.49	0.23
17,104.00	90.03	181.67	7,145.21	-10,970.96	829.62	14,549,224.90	1,743,883.53	40.0611754	-104.6302129	10,968.60	1.90	0.43	1.85
17,194.00	90.68	184.53	7,144.66	-11,060.82	824.75	14,549,135.03	1,743,879.03	40.0609286	-104.6302303	11,058.47	3.26	0.72	3.18
17,284.00	91.87	184.84	7,142.65	-11,150.49	817.40	14,549,045.32	1,743,872.05	40.0606824	-104.6302566	11,148.17	1.37	1.32	0.34
17,373.00	90.78	184.90	7,140.60	-11,239.15	809.85	14,548,956.64	1,743,864.87	40.0604389	-104.6302836	11,236.84	1.23	-1.22	0.07
17,463.00	91.68	184.84	7,138.66	-11,328.80	802.21	14,548,866.95	1,743,857.60	40.0601927	-104.6303109	11,326.52	1.00	1.00	-0.07
17,553.00	88.24	184.73	7,138.73	-11,418.47	794.70	14,548,777.25	1,743,850.46	40.0599465	-104.6303378	11,416.21	3.82	-3.82	-0.12
17,642.00	88.17	184.37	7,141.51	-11,507.15	787.64	14,548,688.55	1,743,843.77	40.0597029	-104.6303630	11,504.91	0.41	-0.08	-0.40
17,732.00	88.01	182.62	7,144.51	-11,596.93	782.16	14,548,598.74	1,743,838.66	40.0594564	-104.6303826	11,594.70	1.95	-0.18	-1.94
17,821.00	88.31	181.64	7,147.37	-11,685.82	778.86	14,548,509.84	1,743,835.72	40.0592123	-104.6303944	11,683.60	1.15	0.34	-1.10
Last Survey 17821.00 'MD													
17,906.00	88.31	181.64	7,149.88	-11,770.75	776.42	14,548,424.90	1,743,833.64	40.0589791	-104.6304031	11,768.53	0.00	0.00	0.00
BHL - PTB 17906.00 'MD (89' FSL - 2476 ' FEL) Sec 11													

Design Annotations

Measured Depth (usft)	Vertical Depth (usft)	Local Coordinates +N/-S (usft)	+E/-W (usft)	Comment
100.00	100.00	-0.18	0.66	SHL 1387' FSL & 2019' FWL Sec 35
7,513.03	7,097.71	-1,384.04	849.01	Cross Section Line 7513.03 'MD (0' FNL - 2428 ' FEL) Sec 02
7,588.52	7,105.42	-1,459.06	850.63	Cross Hard Line Nio 7588.52 'MD (75' FNL - 2426 ' FEL) Sec 02
12,719.94	7,106.22	-6,588.50	857.28	Cross Section Line 12719.94 'MD (0' FNL - 2374 ' FEL) Sec 11
17,821.00	7,147.37	-11,685.82	778.86	Last Survey 17821.00 'MD
17,906.00	7,149.88	-11,770.75	776.42	BHL - PTB 17906.00 'MD (89' FSL - 2476 ' FEL) Sec 11

Checked By: _____ Approved By: _____ Date: _____