

Post Job Report



Service with Integrity

Customer: Occidental Petroleum Corporation

Job Type: Surface Casing

Job Date: 12/02/2023

Well Name: [Labrisa 35-5HZ](#)

API #: 05-123-52240

Service Station: Cheyenne

Client Representative: Ben Petty

Sales Representative: Steve Moore

Author: Yithanlily Silvester

Disclaimer

The information provided in this report is confidential and intended solely for the use of the individual or entity to whom they are addressed. Magnum Cementing Services Technical Team give a based-on facts interpretation. If you are not the named addressee you should not disseminate, distribute, or copy this information. Please notify the sender immediately by e-mail if you have received this report by mistake and delete it from your system. If you are not the intended recipient you are notified that disclosing, copying, distributing, or taking any action in reliance on the contents of this information is strictly prohibited. Any use of this information for the decision-making process is exclusively Customer responsibility.

Table of Contents

1. Well Properties & Cement Blend Data	1
2. Job Sequence / Procedure 1 of 2	2
Job Sequence / Procedure 2 of 2	3
3. Job Graph	4
4. Lab Testing Results.....	5

1. Well Properties


Well Properties	
Hole Size (in)	13.5
Casing Size (in)	9.625
Grade / Weight (lb/ft)	L80/36
TVD/TMD (ft)	2096/2122
BHCT / BHST (F)	88/107

Cement Blend Data

This is the blend data of the Cement ordered for the job.

Blend Description -	Cement Properties
Base Cement Blend : MAG S 14.1	
Mix Water (gal/sk)	6.06
Yield (ft ³ /sk)	1.31
Lab Results	
Density (ppg)	14.1
Working Time (hr:min)	3:12
Thickening Time (hr:min)	3:50
Compressive Strength (psi/12h)	691
Compressive Strength (psi/24h)	1283

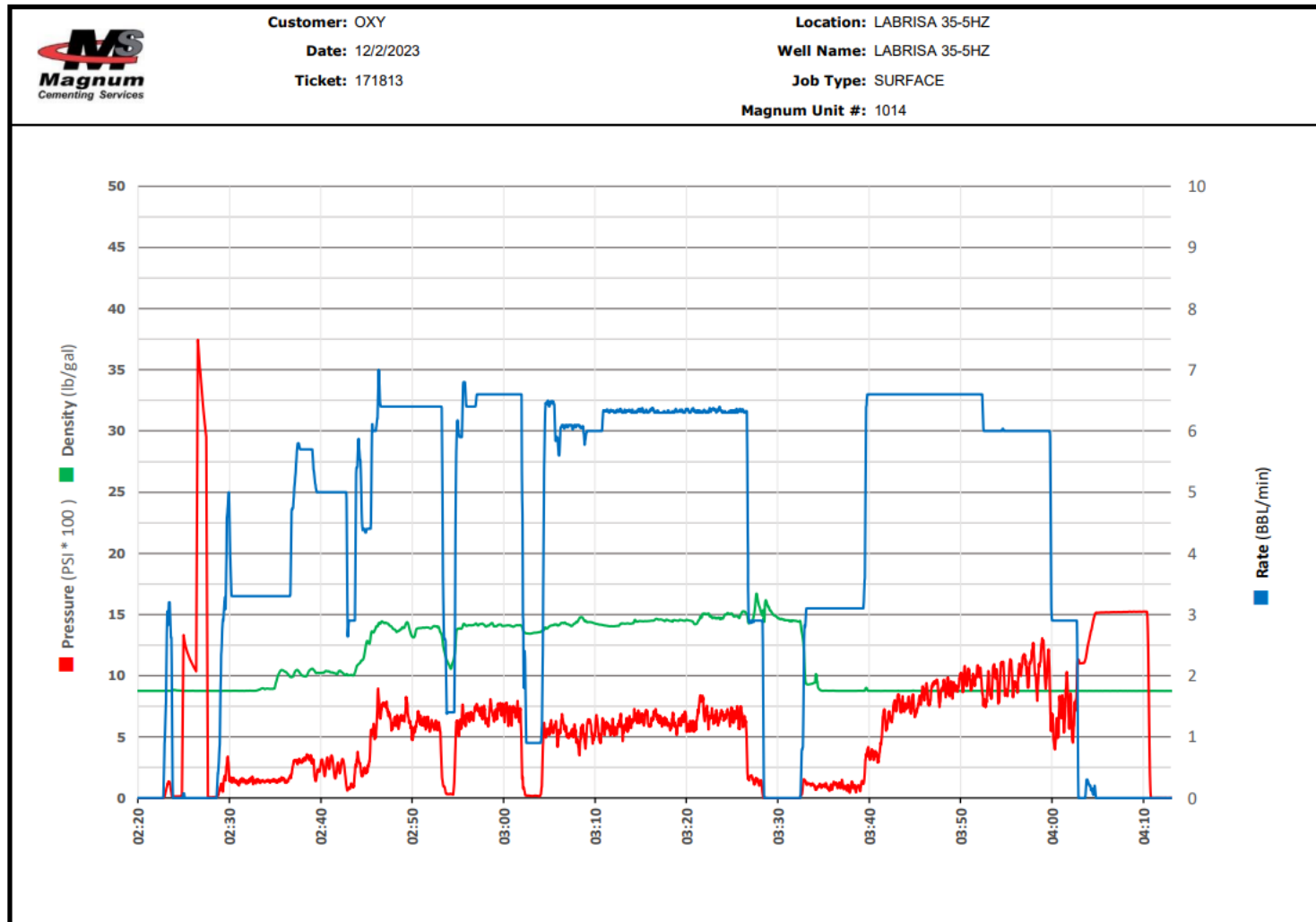
2. Job Sequence / Procedure 1 of 2

US Treatment Report						
						
Customer: OCCIDENTAL PETROLEUM CORP. Rep: David Cornett Supervisor: VITALIJS NEVERDASOV			Job #: JOB00171813 Job Date: 12/2/2023 Time Requested: 10:30			
Job Type: US Primary Casing-Surface			UWI: Labrisa 35-5HZ Surface: T1N, R65W, SEC2			
Time Arrived: 8:30 Time Released: 16:00						
928 sk MAG S 14.1 + 0.25% MCA-1 + 0.10% MCDP-P						
Yield: 1.31 ft ³ /sk = 0bbls Mix Water: 6.06 gal/sk = 0gal						
BHCT (F)	88	BHST (F)	107	Surface Casing Size (in)	9.625	
Surface Casing Grade	L80	Surface Casing Weight (lb/ft)	36	Float Depth (ft)	2072	
Max Pressure (psi)	1500	Mud Density (lb/gal)	8.5	Mud Type	WATER	
Plug Size (in)	9 5/8	Plug Type		Rig TMD (ft)	2122	
TVD (ft)	2096			Supplied		
Treatment Info: Sacks Used: 928 Sacks Not Used: 0						
Preflush: 40bbls MAG Sweep & 10bbls MAG Mark & 10 BBLs WATER						
Circulation Time: 0.5						
Slurry Temp: 60 Bulk Sample: Yes						
Water Temp: 52 Water Sample: Yes						
Bulk Temp: 40 Slurry Sample: Yes						
Air Temp: 37 Air Pressure						
Slurry Returns: 30 Plug Bumped: Yes Pump Out Lines: Yes Float Held: Yes						
Cement Class: Type III Humidity: 25 Precipitation:						
Displace: 161bbls Fresh Water						
Further Blend Details:						
Prehydrated:						
Additional Details (General Notes):						
Time	Pressure psi	Annular Pressure psi	Volume Per Stage bbls	Total Stage Volume bbls	Rate bbls/mi n	Treatment Detail
08:30	0.00					Arrive on Location - ARRIVED ON LOCATION. CUSTOMER REQUESTED CREW AT 10:30. RIG IS GETTING READY TO RUN CASING
09:00	0.00					TEST WATER : TEMP 52/ CHLORIDES 110/ PH 8
12:18	0.00					Safety Meeting - PRE JOB SAFETY MEETING WITH ALL PERSONEL
12:40	0.00					Drop Plug - DROP BOTTOM PLUG
12:52	3,510.00		2		3.0	Start Pressure Test - FILL LINES AND PRESSURE TEST
12:55	110.00		10		3.0	PUMP FRESH WATER
12:57	240.00		10		3.0	PUMP DYE
13:01	270.00		40		5.7	Pump Preflush - PUMP SPACER @ 10.0 PPG
13:09	720.00		216.5		6.5	Pump Slurry - BATCH/ WEIGHT/ PUMP 929 SKS/ 216.7 BBLs 14.1 PPG SLURRY.
13:55	0.00			0		Stop Pumping - SHUTDOWN/ DROP TOP PLUG

Job Sequence / Procedure 2 of 2

13:59	965.00		140		6.5	Displace - FRESH WATER DISPLACEMENT.
14:25	780.00		21.5		3.0	Slow Rate Pumping - SLOW RATE
14:30	1,521.00			161.5		Bump Plug - BUMP PLUG/ 30 BBLs CEMENT TO SURFACE.
14:37	0.00					CHECK FLOATS/ 1 BBL BACK
14:55	0.00					Wash Up Truck
15:15	0.00					Rig Out

3. Job Graph



4. Lab Testing Results

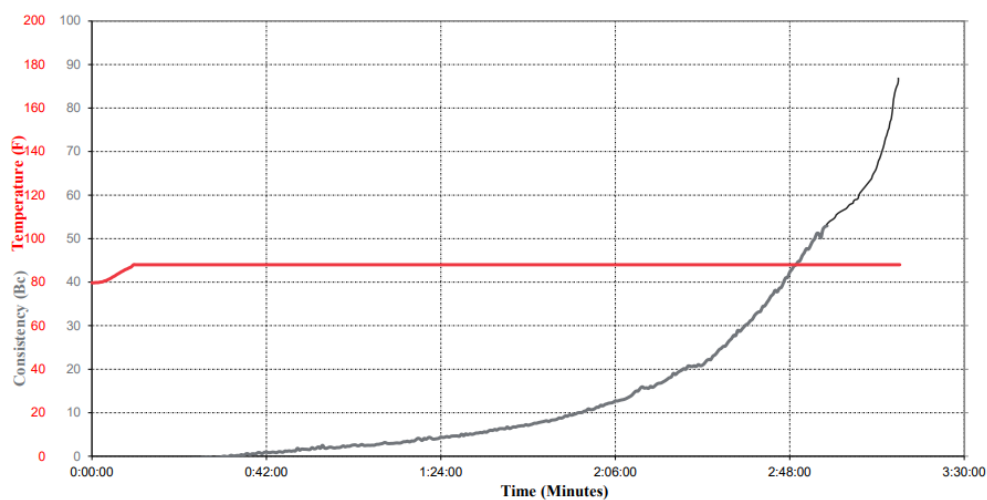
SECTION III: REQUIRED TEST							
TEST REQUESTED:	TT	FL	FW	RH	SGSA	UCA	WATER
	✓	<input type="checkbox"/>	<input type="checkbox"/>	✓	<input type="checkbox"/>	✓	<input type="checkbox"/>

SECTION IV: WELL INFORMATION			
CEMENT TYPE:	Surface Casing		
TMD (ft):	2122.91	BHCT °F:	88
TVD (ft):	2075	BHST °F:	107
MUD Type:			

SECTION V: BLEND INFORMATION					
Blend Name:	MAG S 14.1				
Additives	(%)	Pre-hydrated additive	Specific Condition	Density:	14.1 lbs/gal
MCA-1	0.25	<input type="checkbox"/>		Mix water:	6.06 gal/sk
MCDF-P	0.10	<input type="checkbox"/>		Yield:	1.31 ft³/sk
				Lab Cement:	<input type="checkbox"/>
				Lab Water:	✓
				Field Cement:	✓ Load: 79-1123-CY
			Wet-sieved	Field Water:	<input type="checkbox"/>

SECTION VI: TEST RESULTS							
Load Ticket #	Working Time (40Bc)			Thickening Time (70Bc)			
79-1123-CY	2:46			3:14			
Compressive Strength (psi)	8hr	12hr	24hr	48hr	Time to 500 psi		
				--			
Rheology (D.R.)	300	200	100	6	3	@10sec	@10min

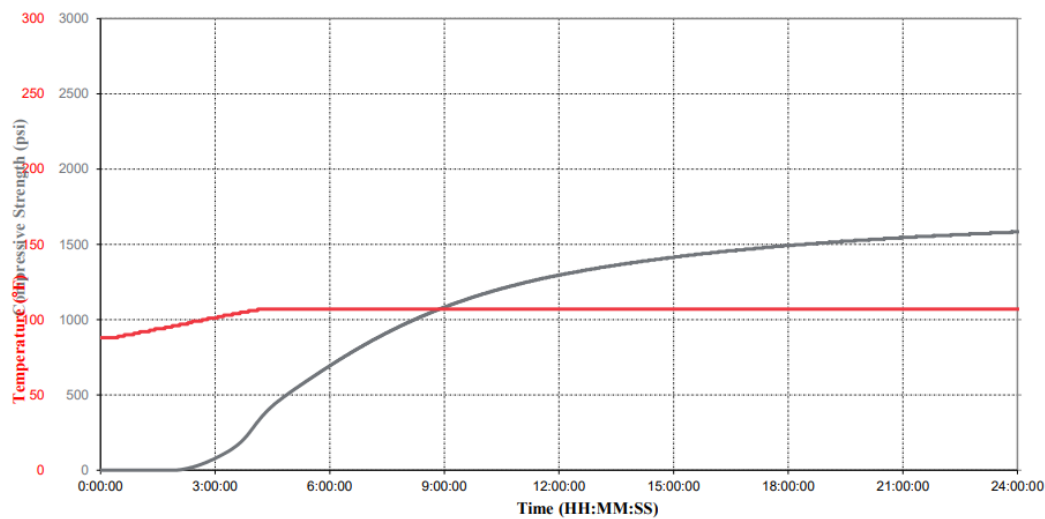
THICKENING TIME TEST RESULTS



TESTED CEMENT INFORMATION

BLEND NAME: MAG S 14.1
 BHCT °F: 88
 WORKING TIME (40Bc): 2:46
 THICKENING TIME (70Bc): 3:14

COMPRESSIVE STRENGTH (UCA) TEST RESULTS



BLEND NAME: MAG S 14.1

BHST °F: 107

STRENGTH @8hr (psi)	STRENGTH @12hr (psi)	STRENGTH @24hr (psi)	STRENGTH @ 48hr (psi)	TIME TO 500 psi (HH:MM)
	1296	1584	--	4:52