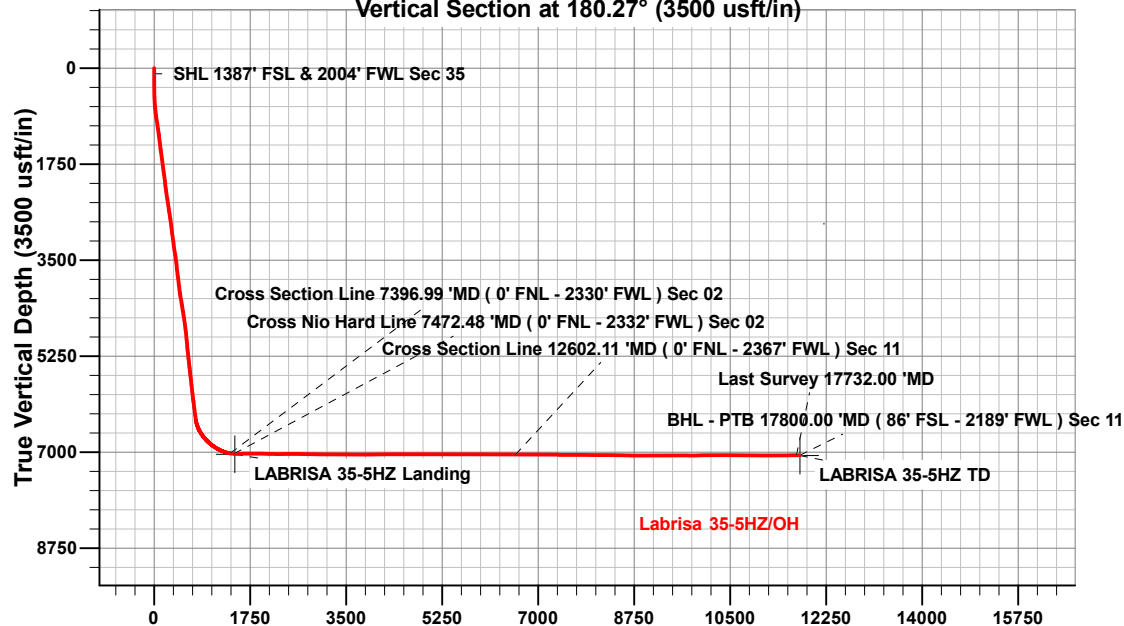


Vertical Section at 180.27° (3500 usft/in)



ANNOTATIONS

MD	Inc	Azi	TVD	+N/-S	+E/-W	Vsect	Departure	Annotation
100.00	0.27	358.50	100.00	0.31	0.01	-0.31	0.30	SHL 1387' FSL & 2004' FWL Sec 35
7396.99	80.85	178.68	7020.52	-1385.44	336.98	1383.83	1459.71	Cross Section Line 7396.99 'MD (0' FNL - 2330' FWL) Sec 02
7472.48	86.79	179.55	7028.44	-1460.47	338.02	1458.86	1534.57	Cross Nio Hard Line 7472.48 'MD (0' FNL - 2332' FWL) Sec 02
12602.11	89.34	180.27	7044.38	-6589.00	336.62	6587.34	6663.64	Cross Section Line 12602.11 'MD (0' FNL - 2367' FWL) Sec 11
17732.00	90.62	191.95	7055.24	-11707.08	174.92	11706.13	11792.98	Last Survey 17732.00 'MD
17800.00	90.62	191.95	7054.51	-11773.60	160.84	11772.72	11860.98	BHL - PTB 17800.00 'MD (86' FSL - 2189' FWL) Sec 11

Project: Weld County, CO (UTM-NAD83)
 Site: 2N-65W-35 (Labrisa Pad)
 Well: Labrisa 35-5HZ
 Wellbore: OH
 Design: OH

FORMATION TOP DETAILS

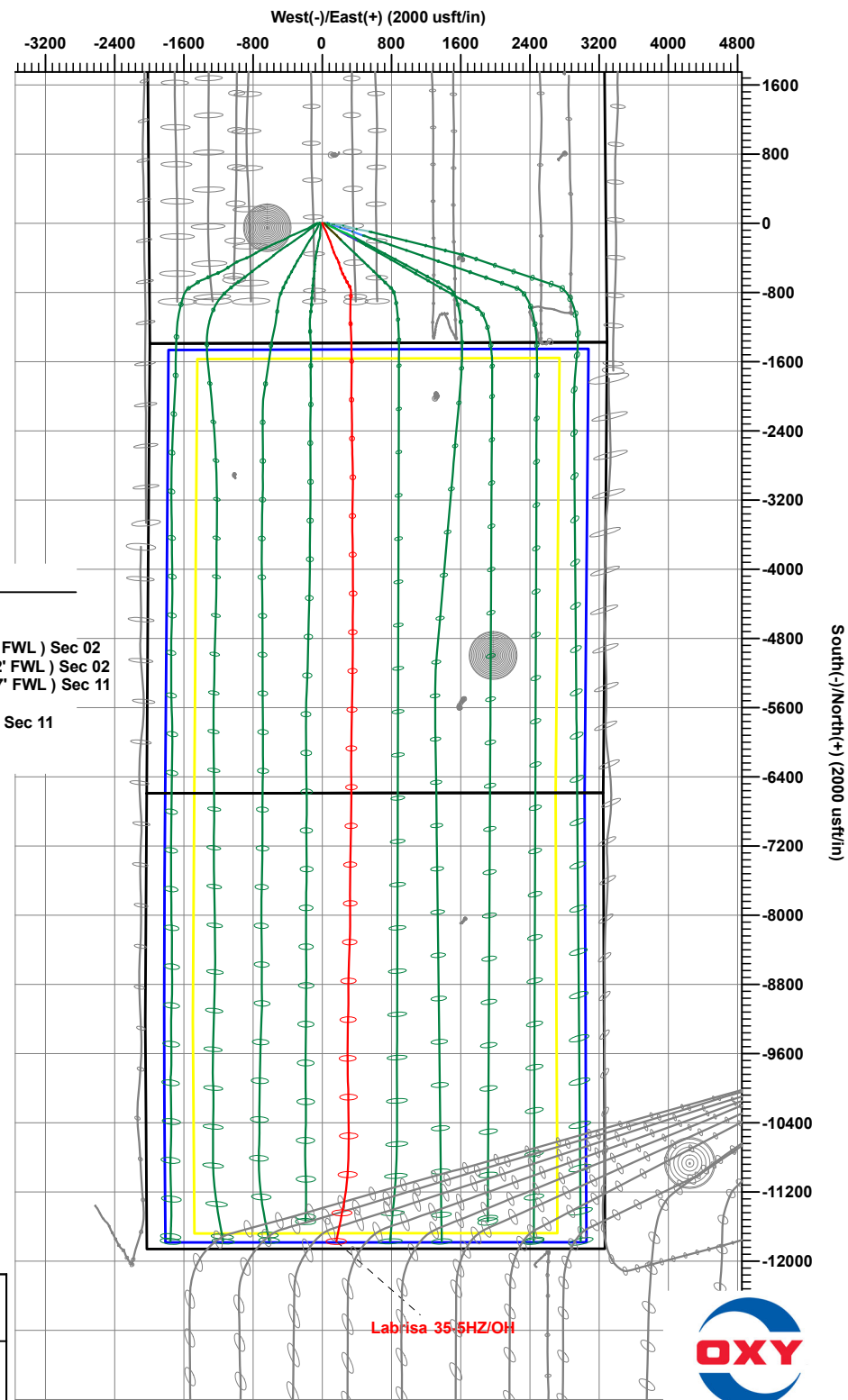
TVDPATH	MDPATH	Formation
1488.00	1496.94	Fox Hills
4103.00	4138.33	Parkman
4453.00	4491.82	Sussex
6896.00	7047.22	Sharon Springs
6921.00	7091.01	Niobrara
7030.00	7402.80	Nio B

CASING DETAILS

TVD	MD	Name	Size
2036.00	2050.79	9 5/8"	9-5/8
7060.74	17823.34	Prod Csg	5-1/2

DESIGN TARGET DETAILS

Name	TVD	+N/-S	+E/-W	Northing	Easting	Latitude	Longitude
LABRISA 35-5HZ Landing	7037.30	-1469.71	361.37	14558724.08	1743361.01	40.0872670	-104.6319400
LABRISA 35-5HZ TD	7060.70	-11774.77	312.81	14548418.90	1743354.94	40.0589680	-104.6321140



Occidental Petroleum

Weld County, CO (UTM-NAD83)

2N-65W-35 (Labrisa Pad)

Labrisa 35-5HZ

OH

OH



Standard Survey Report

21 February, 2024

Total Report Version 1.60

COMPASS 5000.16 Build 97

Survey Report

Company:	Occidental Petroleum	Local Co-ordinate Reference:	Well Labrisa 35-5HZ
Project:	Weld County, CO (UTM-NAD83)	TVD Reference:	4970' GL + 26' KB @ 4996.00usft
Site:	2N-65W-35 (Labrisa Pad)	MD Reference:	4970' GL + 26' KB @ 4996.00usft
Well:	Labrisa 35-5HZ	North Reference:	True
Wellbore:	OH	Survey Calculation Method:	Minimum Curvature
Design:	OH	Database:	.Total Directional Production DB

Project	Weld County, CO (UTM-NAD83)		
Map System:	Universal Transverse Mercator (US Survey Feet)	System Datum:	Ground Level
Geo Datum:	North American Datum 1983		
Map Zone:	Zone 13N (108 W to 102 W)		

Site	2N-65W-35 (Labrisa Pad)		
Site Position:		Northing:	14,560,192.78 usft
From:	Map	Easting:	1,742,933.63 usft
Position Uncertainty:	0.00 usft	Slot Radius:	13-3/16 "
		Latitude:	40.0913051
		Longitude:	-104.6334463

Well	Labrisa 35-5HZ		
Well Position	+N/-S	0.00 usft	Northing: 14,560,192.28 usft
	+E/-W	0.00 usft	Easting: 1,742,993.58 usft
Position Uncertainty	3.28 usft	Wellhead Elevation:	usft
Grid Convergence:	0.24 °	Ground Level:	4,970.00 usft

Wellbore	OH		
Magnetics	Model Name	Sample Date	Declination
	HDGM2024	2/15/2024	(°) 7.75
			Dip Angle (°) 66.23
			Field Strength (nT) 51,471.90000000

Design	OH		
Audit Notes:			
Version:	1.0	Phase:	ACTUAL
Vertical Section:	Depth From (TVD)	+N/-S	Tie On Depth:
	(usft)	(usft)	
	0.00	0.00	0.00
			Direction (°) 180.27

Survey Program	Date	2/21/2024		
From	To	Survey (Wellbore)	Tool Name	Description
(usft)	(usft)			
89.00	2,088.00	OH (OH)	APC_ISCWSA REV 2 MWD+ Fixed:v2:crustal field declination	
2,211.00	17,800.00	Survey #2 (OH)	MWD+IFR1+SAG+MS_Rev ! ISCWSA MWD + IFR1 + Sag Correction + Multi-Station	

Survey													
Measured Depth (usft)	INC (°)	AZI (°)	Vertical Depth (usft)	Local Coordinates +N/-S (usft)	+E/-W (usft)	Map Coordinates Northing (usft)	Easting (usft)	Geo Coordinates Latitude (°)	Longitude (°)	Vertical Section (usft)	Dogleg Rate (°/100usft)	Build Rate (°/100usft)	Turn Rate (°/100usft)
0.00	0.00	0.00	0.00	0.00	0.00	14,560,192.29	1,742,993.58	40.0913030	-104.6332320	0.00	0.00	0.00	0.00
89.00	0.32	2.00	89.00	0.25	0.01	14,560,192.54	1,742,993.59	40.0913037	-104.6332319	-0.25	0.36	0.36	0.00
100.00	0.27	358.50	100.00	0.31	0.01	14,560,192.59	1,742,993.59	40.0913039	-104.6332319	-0.31	0.48	-0.45	-31.81
SHL 1387' FSL & 2004' FWL Sec 35													
181.00	0.17	236.28	181.00	0.43	-0.10	14,560,192.72	1,742,993.48	40.0913042	-104.6332323	-0.43	0.48	-0.12	-150.89
272.00	0.18	298.19	272.00	0.42	-0.33	14,560,192.71	1,742,993.25	40.0913042	-104.6332332	-0.42	0.20	0.01	68.03

Survey Report

Company:	Occidental Petroleum	Local Co-ordinate Reference:	Well Labrisa 35-5HZ
Project:	Weld County, CO (UTM-NAD83)	TVD Reference:	4970' GL + 26' KB @ 4996.00usft
Site:	2N-65W-35 (Labrisa Pad)	MD Reference:	4970' GL + 26' KB @ 4996.00usft
Well:	Labrisa 35-5HZ	North Reference:	True
Wellbore:	OH	Survey Calculation Method:	Minimum Curvature
Design:	OH	Database:	.Total Directional Production DB

Survey													
Measured Depth (usft)	INC (°)	AZI (°)	Vertical Depth (usft)	Local Coordinates +N/-S (usft)	+E/-W (usft)	Map Coordinates Northing (usft)	Easting (usft)	Geo Coordinates Latitude (°)	Longitude (°)	Vertical Section (usft)	Dogleg Rate (°/100usft)	Build Rate (°/100usft)	Turn Rate (°/100usft)
363.00	1.55	135.42	362.99	-0.39	0.40	14,560,191.90	1,742,993.99	40.0913020	-104.6332305	0.39	1.89	1.51	-178.87
452.00	1.11	168.49	451.97	-2.09	1.42	14,560,190.20	1,742,995.01	40.0912973	-104.6332269	2.08	0.97	-0.49	37.16
542.00	3.48	155.29	541.89	-5.43	2.74	14,560,186.87	1,742,996.34	40.0912881	-104.6332222	5.41	2.68	2.63	-14.67
631.00	3.05	170.76	630.74	-10.22	4.25	14,560,182.09	1,742,997.87	40.0912750	-104.6332168	10.20	1.10	-0.48	17.38
721.00	4.88	170.20	720.53	-16.35	5.28	14,560,175.96	1,742,998.93	40.0912581	-104.6332131	16.33	2.03	2.03	-0.62
810.00	7.56	163.87	808.99	-25.71	7.55	14,560,166.61	1,743,001.24	40.0912324	-104.6332050	25.67	3.10	3.01	-7.11
900.00	9.76	153.16	897.97	-38.21	12.64	14,560,154.13	1,743,006.38	40.0911981	-104.6331868	38.15	3.02	2.44	-11.90
989.00	9.89	153.69	985.66	-51.79	19.44	14,560,140.58	1,743,013.23	40.0911608	-104.6331625	51.70	0.18	0.15	0.60
1,079.00	9.86	150.56	1,074.33	-65.43	26.65	14,560,126.97	1,743,020.50	40.0911234	-104.6331367	65.30	0.60	-0.03	-3.48
1,168.00	9.32	148.07	1,162.09	-78.18	34.21	14,560,114.25	1,743,028.11	40.0910883	-104.6331097	78.02	0.76	-0.61	-2.80
1,258.00	7.47	161.87	1,251.13	-89.93	39.88	14,560,102.53	1,743,033.83	40.0910561	-104.6330894	89.74	3.03	-2.06	15.33
1,347.00	7.23	159.09	1,339.40	-100.66	43.68	14,560,091.81	1,743,037.68	40.0910266	-104.6330758	100.45	0.48	-0.27	-3.12
1,437.00	7.75	150.63	1,428.63	-111.24	48.68	14,560,081.25	1,743,042.72	40.0909976	-104.6330579	111.00	1.35	0.58	-9.40
1,526.00	8.38	159.67	1,516.75	-122.55	53.88	14,560,069.96	1,743,047.96	40.0909665	-104.6330393	122.29	1.59	0.71	10.16
1,616.00	8.07	161.45	1,605.83	-134.69	58.16	14,560,057.84	1,743,052.30	40.0909332	-104.6330240	134.41	0.45	-0.34	1.98
1,705.00	8.32	160.70	1,693.92	-146.69	62.28	14,560,045.86	1,743,056.47	40.0909002	-104.6330093	146.39	0.31	0.28	-0.84
1,795.00	8.84	160.39	1,782.91	-159.35	66.75	14,560,033.22	1,743,060.99	40.0908654	-104.6329933	159.03	0.58	0.58	-0.34
1,884.00	8.31	153.05	1,870.92	-171.52	71.96	14,560,021.06	1,743,066.25	40.0908320	-104.6329747	171.18	1.37	-0.60	-8.25
1,974.00	8.25	152.21	1,959.98	-183.03	77.92	14,560,009.58	1,743,072.26	40.0908004	-104.6329534	182.66	0.15	-0.07	-0.93
2,063.00	8.04	157.42	2,048.08	-194.43	83.29	14,559,998.21	1,743,077.67	40.0907691	-104.6329342	194.03	0.86	-0.24	5.85
2,088.00	7.63	157.61	2,072.85	-197.58	84.59	14,559,995.06	1,743,078.99	40.0907605	-104.6329295	197.17	1.64	-1.64	0.76
2,211.00	7.37	156.96	2,194.80	-212.39	90.79	14,559,980.28	1,743,085.25	40.0907198	-104.6329074	211.96	0.22	-0.21	-0.53
2,300.00	9.28	160.22	2,282.86	-224.39	95.45	14,559,968.29	1,743,089.96	40.0906868	-104.6328907	223.94	2.21	2.15	3.66
2,390.00	9.25	161.01	2,371.68	-238.06	100.26	14,559,954.64	1,743,094.82	40.0906493	-104.6328735	237.59	0.15	-0.03	0.88
2,479.00	8.61	163.31	2,459.60	-251.21	104.50	14,559,941.51	1,743,099.12	40.0906132	-104.6328583	250.71	0.82	-0.72	2.58
2,569.00	8.13	163.53	2,548.65	-263.76	108.24	14,559,928.97	1,743,102.91	40.0905787	-104.6328450	263.25	0.53	-0.53	0.24
2,658.00	9.87	162.53	2,636.55	-277.07	112.32	14,559,915.68	1,743,107.04	40.0905422	-104.6328304	276.54	1.96	1.96	-1.12
2,748.00	9.07	162.96	2,725.32	-291.21	116.71	14,559,901.56	1,743,111.49	40.0905033	-104.6328147	290.66	0.89	-0.89	0.48
2,837.00	8.00	162.57	2,813.33	-303.83	120.62	14,559,888.96	1,743,115.46	40.0904687	-104.6328007	303.26	1.20	-1.20	-0.44
2,927.00	7.07	161.19	2,902.55	-315.05	124.28	14,559,877.75	1,743,119.16	40.0904379	-104.6327876	314.46	1.05	-1.03	-1.53
3,038.00	8.53	155.83	3,012.53	-329.03	129.86	14,559,863.80	1,743,124.79	40.0903995	-104.6327677	328.41	1.47	1.32	-4.83
3,128.00	7.95	158.61	3,101.60	-340.91	134.86	14,559,851.93	1,743,129.85	40.0903668	-104.6327498	340.27	0.78	-0.64	3.09
3,218.00	7.37	158.07	3,190.79	-352.06	139.29	14,559,840.80	1,743,134.32	40.0903362	-104.6327340	351.40	0.65	-0.64	-0.60
3,307.00	10.22	156.60	3,278.74	-364.61	144.56	14,559,828.28	1,743,139.64	40.0903018	-104.6327151	363.92	3.21	3.20	-1.65
3,397.00	10.20	153.03	3,367.31	-379.04	151.34	14,559,813.88	1,743,146.48	40.0902622	-104.6326909	378.32	0.70	-0.02	-3.97
3,486.00	9.26	150.81	3,455.03	-392.31	158.41	14,559,800.63	1,743,153.60	40.0902257	-104.6326656	391.56	1.14	-1.06	-2.49
3,576.00	7.85	149.51	3,544.03	-403.93	165.06	14,559,789.04	1,743,160.30	40.0901938	-104.6326418	403.15	1.58	-1.57	-1.44
3,665.00	6.46	147.05	3,632.33	-413.37	170.86	14,559,779.63	1,743,166.15	40.0901679	-104.6326211	412.56	1.60	-1.56	-2.76

Survey Report

Company:	Occidental Petroleum	Local Co-ordinate Reference:	Well Labrisa 35-5HZ
Project:	Weld County, CO (UTM-NAD83)	TVD Reference:	4970' GL + 26' KB @ 4996.00usft
Site:	2N-65W-35 (Labrisa Pad)	MD Reference:	4970' GL + 26' KB @ 4996.00usft
Well:	Labrisa 35-5HZ	North Reference:	True
Wellbore:	OH	Survey Calculation Method:	Minimum Curvature
Design:	OH	Database:	.Total Directional Production DB

Survey													
Measured Depth (usft)	INC (°)	AZI (°)	Vertical Depth (usft)	Local Coordinates +N/-S (usft)	+E/-W (usft)	Map Coordinates Northing (usft)	Easting (usft)	Geo Coordinates Latitude (°)	Longitude (°)	Vertical Section (usft)	Dogleg Rate (°/100usft)	Build Rate (°/100usft)	Turn Rate (°/100usft)
3,755.00	7.25	149.64	3,721.69	-422.52	176.49	14,559,770.50	1,743,171.81	40.0901427	-104.6326010	421.68	0.94	0.88	2.88
3,845.00	8.82	162.94	3,810.81	-434.02	181.38	14,559,759.02	1,743,176.75	40.0901112	-104.6325834	433.16	2.69	1.74	14.78
3,934.00	7.74	157.92	3,898.88	-446.09	185.64	14,559,746.96	1,743,181.06	40.0900780	-104.6325682	445.21	1.46	-1.21	-5.64
4,024.00	6.51	154.88	3,988.19	-456.33	190.08	14,559,736.75	1,743,185.54	40.0900499	-104.6325523	455.43	1.43	-1.37	-3.38
4,114.00	7.72	165.40	4,077.50	-466.80	193.77	14,559,726.29	1,743,189.28	40.0900211	-104.6325392	465.88	1.97	1.34	11.69
4,203.00	10.37	167.44	4,165.38	-480.40	197.02	14,559,712.70	1,743,192.58	40.0899838	-104.6325275	479.47	3.00	2.98	2.29
4,292.00	10.45	162.23	4,252.92	-495.91	201.23	14,559,697.21	1,743,196.85	40.0899412	-104.6325125	494.96	1.06	0.09	-5.85
4,382.00	9.03	164.09	4,341.62	-510.47	205.66	14,559,682.66	1,743,201.34	40.0899012	-104.6324967	509.50	1.62	-1.58	2.07
4,471.00	10.66	156.32	4,429.31	-524.73	210.88	14,559,668.43	1,743,206.62	40.0898621	-104.6324780	523.73	2.36	1.83	-8.73
4,561.00	9.23	157.06	4,517.96	-539.00	217.03	14,559,654.18	1,743,212.83	40.0898229	-104.6324560	537.97	1.60	-1.59	0.82
4,650.00	8.55	157.48	4,605.89	-551.69	222.35	14,559,641.52	1,743,218.20	40.0897880	-104.6324370	550.63	0.77	-0.76	0.47
4,740.00	8.20	159.86	4,694.93	-563.89	227.12	14,559,629.33	1,743,223.03	40.0897545	-104.6324199	562.82	0.55	-0.39	2.64
4,830.00	7.41	159.43	4,784.09	-575.35	231.37	14,559,617.89	1,743,227.32	40.0897230	-104.6324047	574.26	0.88	-0.88	-0.48
4,919.00	6.19	159.02	4,872.46	-585.21	235.11	14,559,608.05	1,743,231.10	40.0896960	-104.6323914	584.09	1.37	-1.37	-0.46
5,009.00	6.66	148.92	4,961.90	-594.21	239.54	14,559,599.07	1,743,235.57	40.0896713	-104.6323755	593.07	1.36	0.52	-11.22
5,098.00	5.68	148.00	5,050.38	-602.36	244.54	14,559,590.94	1,743,240.60	40.0896489	-104.6323577	601.20	1.11	-1.10	-1.03
5,188.00	7.01	151.25	5,139.83	-610.95	249.54	14,559,582.37	1,743,245.63	40.0896253	-104.6323398	609.77	1.53	1.48	3.61
5,278.00	6.36	151.85	5,229.22	-620.17	254.53	14,559,573.18	1,743,250.67	40.0896000	-104.6323219	618.96	0.73	-0.72	0.67
5,367.00	7.62	153.69	5,317.56	-629.80	259.47	14,559,563.56	1,743,255.65	40.0895735	-104.6323043	628.57	1.44	1.42	2.07
5,457.00	6.28	155.86	5,406.89	-639.64	264.13	14,559,553.74	1,743,260.35	40.0895465	-104.6322876	638.39	1.52	-1.49	2.41
5,546.00	8.12	155.70	5,495.19	-649.81	268.71	14,559,543.59	1,743,264.97	40.0895186	-104.6322712	648.54	2.07	2.07	-0.18
5,636.00	6.59	151.35	5,584.45	-660.14	273.80	14,559,533.28	1,743,270.10	40.0894902	-104.6322530	658.84	1.81	-1.70	-4.83
5,726.00	8.08	152.45	5,673.71	-670.28	279.20	14,559,523.16	1,743,275.54	40.0894624	-104.6322337	668.96	1.66	1.66	1.22
5,815.00	6.74	149.91	5,761.96	-680.35	284.71	14,559,513.12	1,743,281.10	40.0894347	-104.6322140	679.00	1.55	-1.51	-2.85
5,905.00	7.85	148.72	5,851.23	-690.17	290.55	14,559,503.32	1,743,286.98	40.0894077	-104.6321931	688.79	1.24	1.23	-1.32
5,995.00	6.95	148.72	5,940.48	-700.07	296.57	14,559,493.44	1,743,293.04	40.0893805	-104.6321716	698.67	1.00	-1.00	0.00
6,084.00	9.73	148.27	6,028.53	-711.08	303.32	14,559,482.47	1,743,299.83	40.0893503	-104.6321475	709.64	3.12	3.12	-0.51
6,174.00	7.68	146.95	6,117.49	-722.59	310.60	14,559,470.99	1,743,307.16	40.0893187	-104.6321214	721.11	2.29	-2.28	-1.47
6,263.00	8.08	159.64	6,205.66	-733.44	316.02	14,559,460.16	1,743,312.63	40.0892889	-104.6321021	731.94	2.00	0.45	14.26
6,353.00	7.68	159.04	6,294.81	-744.98	320.38	14,559,448.63	1,743,317.03	40.0892572	-104.6320865	743.46	0.45	-0.44	-0.67
6,443.00	7.53	155.53	6,384.01	-755.96	324.97	14,559,437.67	1,743,321.66	40.0892271	-104.6320701	754.42	0.54	-0.17	-3.90
6,532.00	15.73	169.79	6,471.13	-773.18	329.53	14,559,420.47	1,743,326.30	40.0891798	-104.6320538	771.62	9.70	9.21	16.02
6,622.00	22.53	180.20	6,556.13	-802.47	331.64	14,559,391.19	1,743,328.52	40.0890993	-104.6320462	800.90	8.43	7.56	11.57
6,711.00	31.25	183.44	6,635.44	-842.64	330.19	14,559,351.01	1,743,327.24	40.0889890	-104.6320514	841.08	9.93	9.80	3.64
6,801.00	37.41	183.46	6,709.72	-893.28	327.14	14,559,300.36	1,743,324.40	40.0888500	-104.6320623	891.73	6.84	6.84	0.02
6,891.00	43.06	181.80	6,778.40	-951.33	324.52	14,559,242.30	1,743,322.02	40.0886906	-104.6320717	949.79	6.39	6.28	-1.84
6,980.00	49.88	180.44	6,839.67	-1,015.80	323.30	14,559,177.82	1,743,321.07	40.0885135	-104.6320761	1,014.27	7.74	7.66	-1.53

Survey Report

Company:	Occidental Petroleum	Local Co-ordinate Reference:	Well Labrisa 35-5HZ
Project:	Weld County, CO (UTM-NAD83)	TVD Reference:	4970' GL + 26' KB @ 4996.00usft
Site:	2N-65W-35 (Labrisa Pad)	MD Reference:	4970' GL + 26' KB @ 4996.00usft
Well:	Labrisa 35-5HZ	North Reference:	True
Wellbore:	OH	Survey Calculation Method:	Minimum Curvature
Design:	OH	Database:	.Total Directional Production DB

Survey

Measured Depth (usft)	INC (°)	AZI (°)	Vertical Depth (usft)	Local Coordinates +N/-S (usft)	+E/-W (usft)	Map Coordinates Northing (usft)	Easting (usft)	Geo Coordinates Latitude (°)	Longitude (°)	Vertical Section (usft)	Dogleg Rate (°/100usft)	Build Rate (°/100usft)	Turn Rate (°/100usft)
7,070.00	55.19	179.28	6,894.39	-1,087.21	323.50	14,559,106.42	1,743,321.56	40.0883174	-104.6320753	1,085.67	5.99	5.90	-1.29
7,159.00	60.41	176.91	6,941.81	-1,162.44	326.05	14,559,031.20	1,743,324.42	40.0881108	-104.6320662	1,160.90	6.28	5.87	-2.66
7,248.00	68.05	176.41	6,980.47	-1,242.40	330.73	14,558,951.26	1,743,329.43	40.0878913	-104.6320495	1,240.82	8.60	8.58	-0.56
7,338.00	75.63	177.65	7,008.50	-1,327.74	335.13	14,558,865.94	1,743,334.19	40.0876569	-104.6320338	1,326.14	8.52	8.42	1.38
7,396.99	80.85	178.68	7,020.52	-1,385.44	336.98	14,558,808.25	1,743,336.27	40.0874984	-104.6320272	1,383.83	9.02	8.85	1.75
Cross Section Line 7396.99 'MD (0' FNL - 2330' FWL) Sec 02													
7,428.00	83.60	179.21	7,024.72	-1,416.15	337.54	14,558,777.54	1,743,336.96	40.0874141	-104.6320252	1,414.55	9.02	8.86	1.71
7,472.48	86.79	179.55	7,028.44	-1,460.47	338.02	14,558,733.22	1,743,337.62	40.0872924	-104.6320235	1,458.86	7.21	7.17	0.77
Cross Nio Hard Line 7472.48 'MD (0' FNL - 2332' FWL) Sec 02													
7,517.00	89.98	179.89	7,029.70	-1,504.97	338.24	14,558,688.73	1,743,338.02	40.0871702	-104.6320227	1,503.36	7.21	7.17	0.76
7,607.00	91.08	179.49	7,028.86	-1,594.96	338.72	14,558,598.74	1,743,338.88	40.0869231	-104.6320209	1,593.35	1.30	1.22	-0.44
7,696.00	91.18	180.76	7,027.11	-1,683.94	338.53	14,558,509.76	1,743,339.05	40.0866787	-104.6320216	1,682.33	1.43	0.11	1.43
7,786.00	89.39	180.52	7,026.66	-1,773.93	337.53	14,558,419.76	1,743,338.42	40.0864316	-104.6320252	1,772.32	2.01	-1.99	-0.27
7,876.00	90.43	180.26	7,026.80	-1,863.93	336.91	14,558,329.77	1,743,338.18	40.0861845	-104.6320274	1,862.32	1.19	1.16	-0.29
7,965.00	88.92	179.65	7,027.31	-1,952.92	336.98	14,558,240.77	1,743,338.61	40.0859401	-104.6320272	1,951.31	1.83	-1.70	-0.69
8,054.00	88.76	179.68	7,029.11	-2,041.90	337.50	14,558,151.79	1,743,339.50	40.0856957	-104.6320253	2,040.29	0.18	-0.18	0.03
8,144.00	88.98	178.91	7,030.88	-2,131.88	338.61	14,558,061.82	1,743,340.98	40.0854486	-104.6320214	2,130.26	0.89	0.24	-0.86
8,233.00	88.79	177.94	7,032.62	-2,220.83	341.06	14,557,972.89	1,743,343.79	40.0852044	-104.6320126	2,219.19	1.11	-0.21	-1.09
8,323.00	90.08	180.38	7,033.50	-2,310.80	342.37	14,557,882.92	1,743,345.48	40.0849573	-104.6320079	2,309.16	3.07	1.43	2.71
8,412.00	91.37	180.00	7,032.38	-2,399.79	342.08	14,557,793.93	1,743,345.55	40.0847129	-104.6320090	2,398.15	1.51	1.45	-0.43
8,502.00	90.52	178.99	7,030.89	-2,489.77	342.87	14,557,703.95	1,743,346.72	40.0844658	-104.6320062	2,488.13	1.47	-0.94	-1.12
8,591.00	90.21	177.62	7,030.33	-2,578.73	345.51	14,557,615.00	1,743,349.71	40.0842215	-104.6319967	2,577.08	1.58	-0.35	-1.54
8,681.00	89.25	179.18	7,030.75	-2,668.69	348.02	14,557,525.05	1,743,352.60	40.0839745	-104.6319878	2,667.02	2.04	-1.07	1.73
8,771.00	88.97	179.05	7,032.15	-2,758.67	349.41	14,557,435.08	1,743,354.36	40.0837274	-104.6319828	2,756.99	0.34	-0.31	-0.14
8,860.00	88.45	179.20	7,034.15	-2,847.64	350.77	14,557,346.12	1,743,356.09	40.0834831	-104.6319779	2,845.95	0.61	-0.58	0.17
8,950.00	88.51	178.74	7,036.54	-2,937.59	352.38	14,557,256.17	1,743,358.07	40.0832361	-104.6319722	2,935.90	0.52	0.07	-0.51
9,039.00	89.15	181.00	7,038.36	-3,026.57	352.59	14,557,167.20	1,743,358.64	40.0829917	-104.6319715	3,024.87	2.64	0.72	2.54
9,129.00	89.25	180.95	7,039.61	-3,116.54	351.05	14,557,077.22	1,743,357.48	40.0827446	-104.6319769	3,114.85	0.12	0.11	-0.06
9,219.00	89.24	180.89	7,040.80	-3,206.52	349.61	14,556,987.23	1,743,356.41	40.0824975	-104.6319821	3,204.84	0.07	-0.01	-0.07
9,308.00	88.94	180.66	7,042.21	-3,295.50	348.41	14,556,898.25	1,743,355.57	40.0822532	-104.6319864	3,293.83	0.42	-0.34	-0.26
9,398.00	89.28	180.29	7,043.61	-3,385.49	347.66	14,556,808.26	1,743,355.20	40.0820061	-104.6319891	3,383.81	0.56	0.38	-0.41
9,487.00	89.82	180.03	7,044.31	-3,474.49	347.41	14,556,719.26	1,743,355.31	40.0817617	-104.6319900	3,472.81	0.67	0.61	-0.29
9,577.00	90.42	179.46	7,044.12	-3,564.49	347.81	14,556,629.27	1,743,356.09	40.0815145	-104.6319885	3,562.81	0.92	0.67	-0.63
9,666.00	91.99	179.66	7,042.25	-3,653.46	348.50	14,556,540.29	1,743,357.14	40.0812702	-104.6319861	3,651.78	1.78	1.76	0.22
9,756.00	90.22	179.27	7,040.51	-3,743.44	349.34	14,556,450.32	1,743,358.35	40.0810231	-104.6319831	3,741.75	2.01	-1.97	-0.43
9,845.00	90.25	179.19	7,040.15	-3,832.43	350.53	14,556,361.34	1,743,359.91	40.0807787	-104.6319788	3,830.73	0.10	0.03	-0.09
9,935.00	90.46	178.39	7,039.59	-3,922.40	352.43	14,556,271.37	1,743,362.18	40.0805316	-104.6319720	3,920.70	0.92	0.23	-0.89
10,025.00	89.98	179.98	7,039.25	-4,012.39	353.71	14,556,181.39	1,743,363.83	40.0802845	-104.6319675	4,010.68	1.85	-0.53	1.77

Survey Report

Company:	Occidental Petroleum	Local Co-ordinate Reference:	Well Labrisa 35-5HZ
Project:	Weld County, CO (UTM-NAD83)	TVD Reference:	4970' GL + 26' KB @ 4996.00usft
Site:	2N-65W-35 (Labrisa Pad)	MD Reference:	4970' GL + 26' KB @ 4996.00usft
Well:	Labrisa 35-5HZ	North Reference:	True
Wellbore:	OH	Survey Calculation Method:	Minimum Curvature
Design:	OH	Database:	.Total Directional Production DB

Survey														
Measured Depth (usft)	INC (°)	AZI (°)	Vertical Depth (usft)	Local Coordinates +N/-S (usft)	Local Coordinates +E/-W (usft)	Map Coordinates Northing (usft)	Map Coordinates Easting (usft)	Geo Coordinates Latitude (°)	Geo Coordinates Longitude (°)	Vertical Section (usft)	Dogleg Rate (°/100usft)	Build Rate (°/100usft)	Turn Rate (°/100usft)	
10,114.00	90.09	180.05	7,039.19	-4,101.39	353.69	14,556,092.39	1,743,364.18	40.0800401	-104.6319676	4,099.68	0.15	0.12	0.08	
10,204.00	90.23	179.29	7,038.94	-4,191.39	354.21	14,556,002.39	1,743,365.07	40.0797930	-104.6319657	4,189.67	0.86	0.16	-0.84	
10,294.00	90.63	179.18	7,038.26	-4,281.38	355.41	14,555,912.41	1,743,366.64	40.0795458	-104.6319614	4,279.66	0.46	0.44	-0.12	
10,383.00	89.72	181.15	7,037.99	-4,370.37	355.15	14,555,823.42	1,743,366.75	40.0793015	-104.6319623	4,368.65	2.44	-1.02	2.21	
10,473.00	89.58	181.31	7,038.54	-4,460.35	353.22	14,555,733.43	1,743,365.19	40.0790544	-104.6319693	4,458.64	0.24	-0.16	0.18	
10,562.00	90.02	180.69	7,038.85	-4,549.33	351.67	14,555,644.44	1,743,364.00	40.0788100	-104.6319748	4,547.63	0.85	0.49	-0.70	
10,652.00	90.17	180.20	7,038.70	-4,639.33	350.97	14,555,554.44	1,743,363.67	40.0785629	-104.6319773	4,637.63	0.57	0.17	-0.54	
10,741.00	90.28	178.70	7,038.35	-4,728.32	351.82	14,555,465.45	1,743,364.89	40.0783185	-104.6319743	4,726.61	1.69	0.12	-1.69	
10,831.00	90.11	178.07	7,038.05	-4,818.29	354.36	14,555,375.50	1,743,367.80	40.0780714	-104.6319652	4,816.56	0.73	-0.19	-0.70	
10,921.00	89.57	181.50	7,038.30	-4,908.27	354.70	14,555,285.52	1,743,368.51	40.0778243	-104.6319640	4,906.55	3.86	-0.60	3.81	
11,010.00	89.61	181.57	7,038.94	-4,997.24	352.31	14,555,196.54	1,743,366.49	40.0775800	-104.6319725	4,995.52	0.09	0.04	0.08	
11,100.00	89.59	181.24	7,039.57	-5,087.21	350.11	14,555,106.56	1,743,364.66	40.0773329	-104.6319804	5,085.50	0.37	-0.02	-0.37	
11,190.00	90.04	180.97	7,039.86	-5,177.19	348.37	14,555,016.58	1,743,363.29	40.0770858	-104.6319866	5,175.49	0.58	0.50	-0.30	
11,279.00	90.52	180.55	7,039.42	-5,266.18	347.19	14,554,927.58	1,743,362.48	40.0768415	-104.6319908	5,264.49	0.72	0.54	-0.47	
11,369.00	91.22	180.39	7,038.05	-5,356.17	346.45	14,554,837.59	1,743,362.11	40.0765943	-104.6319935	5,354.48	0.80	0.78	-0.18	
11,458.00	90.45	180.75	7,036.76	-5,445.15	345.57	14,554,748.60	1,743,361.59	40.0763500	-104.6319967	5,443.46	0.96	-0.87	0.40	
11,548.00	89.08	181.25	7,037.13	-5,535.14	344.00	14,554,658.62	1,743,360.39	40.0761029	-104.6320023	5,533.45	1.62	-1.52	0.56	
11,638.00	90.19	180.75	7,037.70	-5,625.12	342.42	14,554,568.63	1,743,359.19	40.0758558	-104.6320079	5,623.44	1.35	1.23	-0.56	
11,727.00	91.18	180.32	7,036.64	-5,714.11	341.59	14,554,479.64	1,743,358.73	40.0756114	-104.6320109	5,712.43	1.21	1.11	-0.48	
11,817.00	88.89	181.50	7,036.58	-5,804.09	340.16	14,554,389.65	1,743,357.67	40.0753643	-104.6320160	5,802.42	2.86	-2.54	1.31	
11,907.00	90.27	181.07	7,037.24	-5,894.06	338.15	14,554,299.67	1,743,356.02	40.0751172	-104.6320232	5,892.40	1.61	1.53	-0.48	
11,996.00	87.79	180.95	7,038.75	-5,983.03	336.58	14,554,210.70	1,743,354.82	40.0748729	-104.6320288	5,981.38	2.79	-2.79	-0.13	
12,086.00	88.68	180.62	7,041.52	-6,072.98	335.35	14,554,120.75	1,743,353.96	40.0746259	-104.6320332	6,071.33	1.05	0.99	-0.37	
12,175.00	88.77	180.37	7,043.50	-6,161.95	334.58	14,554,031.77	1,743,353.56	40.0743816	-104.6320360	6,160.31	0.30	0.10	-0.28	
12,265.00	89.19	180.33	7,045.10	-6,251.93	334.03	14,553,941.78	1,743,353.38	40.0741345	-104.6320379	6,250.29	0.47	0.47	-0.04	
12,355.00	89.68	179.96	7,045.99	-6,341.93	333.80	14,553,851.79	1,743,353.52	40.0738873	-104.6320388	6,340.29	0.68	0.54	-0.41	
12,444.00	90.28	179.26	7,046.02	-6,430.93	334.41	14,553,762.79	1,743,354.50	40.0736429	-104.6320366	6,429.28	1.04	0.67	-0.79	
12,534.00	91.31	178.70	7,044.77	-6,520.90	336.01	14,553,672.83	1,743,356.47	40.0733958	-104.6320309	6,519.25	1.30	1.14	-0.62	
12,602.11	89.34	180.27	7,044.38	-6,589.00	336.62	14,553,604.73	1,743,357.36	40.0732088	-104.6320287	6,587.34	3.70	-2.89	2.31	
Cross Section Line 12602.11 'MD (0' FNL - 2367' FWL) Sec 11														
12,624.00	88.71	180.78	7,044.76	-6,610.89	336.42	14,553,582.84	1,743,357.25	40.0731487	-104.6320294	6,609.23	3.70	-2.89	2.31	
12,713.00	89.86	180.64	7,045.87	-6,699.87	335.31	14,553,493.85	1,743,356.51	40.0729044	-104.6320334	6,698.22	1.30	1.29	-0.16	
12,803.00	91.06	180.12	7,045.14	-6,789.87	334.72	14,553,403.86	1,743,356.29	40.0726572	-104.6320355	6,788.21	1.45	1.33	-0.58	
12,892.00	89.89	180.99	7,044.41	-6,878.86	333.85	14,553,314.87	1,743,355.79	40.0724129	-104.6320386	6,877.21	1.64	-1.31	0.98	
12,982.00	90.85	180.81	7,043.82	-6,968.84	332.44	14,553,224.87	1,743,354.75	40.0721657	-104.6320436	6,967.20	1.09	1.07	-0.20	
13,072.00	89.28	181.92	7,043.72	-7,058.81	330.30	14,553,134.90	1,743,352.98	40.0719187	-104.6320513	7,057.18	2.14	-1.74	1.23	
13,161.00	89.87	181.95	7,044.38	-7,147.76	327.29	14,553,045.94	1,743,350.34	40.0716744	-104.6320621	7,146.14	0.66	0.66	0.03	
13,251.00	90.53	181.35	7,044.07	-7,237.72	324.70	14,552,955.97	1,743,348.12	40.0714274	-104.6320713	7,236.11	0.99	0.73	-0.67	

Survey Report

Company:	Occidental Petroleum	Local Co-ordinate Reference:	Well Labrisa 35-5HZ
Project:	Weld County, CO (UTM-NAD83)	TVD Reference:	4970' GL + 26' KB @ 4996.00usft
Site:	2N-65W-35 (Labrisa Pad)	MD Reference:	4970' GL + 26' KB @ 4996.00usft
Well:	Labrisa 35-5HZ	North Reference:	True
Wellbore:	OH	Survey Calculation Method:	Minimum Curvature
Design:	OH	Database:	.Total Directional Production DB

Survey													
Measured Depth (usft)	INC (°)	AZI (°)	Vertical Depth (usft)	Local Coordinates +N/-S (usft)	+E/-W (usft)	Map Coordinates Northing (usft)	Easting (usft)	Geo Coordinates Latitude (°)	Longituge (°)	Vertical Section (usft)	Dogleg Rate (°/100usft)	Build Rate (°/100usft)	Turn Rate (°/100usft)
13,340.00	88.25	180.83	7,045.02	-7,326.69	323.01	14,552,866.99	1,743,346.79	40.0711830	-104.6320774	7,325.09	2.63	-2.56	-0.58
13,430.00	88.88	180.45	7,047.27	-7,416.66	322.00	14,552,777.02	1,743,346.16	40.0709360	-104.6320810	7,415.06	0.82	0.70	-0.42
13,519.00	89.42	180.28	7,048.59	-7,505.65	321.44	14,552,688.03	1,743,345.96	40.0706916	-104.6320830	7,504.05	0.64	0.61	-0.19
13,609.00	89.87	180.16	7,049.15	-7,595.64	321.09	14,552,598.03	1,743,345.98	40.0704445	-104.6320842	7,594.05	0.52	0.50	-0.13
13,698.00	90.42	179.63	7,048.92	-7,684.64	321.25	14,552,509.03	1,743,346.51	40.0702001	-104.6320837	7,683.04	0.86	0.62	-0.60
13,788.00	90.92	179.07	7,047.87	-7,774.63	322.27	14,552,419.05	1,743,347.91	40.0699529	-104.6320800	7,773.03	0.83	0.56	-0.62
13,878.00	88.61	180.80	7,048.24	-7,864.62	322.38	14,552,329.06	1,743,348.38	40.0697058	-104.6320797	7,863.01	3.21	-2.57	1.92
13,967.00	88.65	180.50	7,050.37	-7,953.59	321.37	14,552,240.09	1,743,347.74	40.0694615	-104.6320833	7,951.99	0.34	0.04	-0.34
14,057.00	89.08	180.21	7,052.15	-8,043.57	320.81	14,552,150.11	1,743,347.55	40.0692144	-104.6320853	8,041.97	0.58	0.48	-0.32
14,147.00	90.01	180.26	7,052.86	-8,133.56	320.44	14,552,060.11	1,743,347.55	40.0689673	-104.6320866	8,131.96	1.03	1.03	0.06
14,237.00	90.97	181.29	7,052.09	-8,223.55	319.22	14,551,970.12	1,743,346.70	40.0687202	-104.6320909	8,221.95	1.56	1.07	1.14
14,326.00	88.88	182.13	7,052.21	-8,312.51	316.57	14,551,881.16	1,743,344.42	40.0684759	-104.6321004	8,310.92	2.53	-2.35	0.94
14,416.00	89.13	182.27	7,053.77	-8,402.43	313.11	14,551,791.22	1,743,341.33	40.0682289	-104.6321128	8,400.86	0.32	0.28	0.16
14,506.00	88.71	182.00	7,055.47	-8,492.35	309.76	14,551,701.29	1,743,338.35	40.0679820	-104.6321248	8,490.79	0.55	-0.47	-0.30
14,595.00	88.47	181.82	7,057.66	-8,581.27	306.79	14,551,612.36	1,743,335.75	40.0677378	-104.6321354	8,579.73	0.34	-0.27	-0.20
14,685.00	88.20	181.83	7,060.28	-8,671.19	303.93	14,551,522.43	1,743,333.26	40.0674909	-104.6321456	8,669.66	0.30	-0.30	0.01
14,775.00	89.38	180.38	7,062.18	-8,761.15	302.19	14,551,432.46	1,743,331.89	40.0672438	-104.6321518	8,759.62	2.08	1.31	-1.61
14,864.00	89.05	180.85	7,063.40	-8,850.13	301.24	14,551,343.47	1,743,331.31	40.0669995	-104.6321552	8,848.61	0.65	-0.37	0.53
14,954.00	90.99	180.05	7,063.36	-8,940.12	300.53	14,551,253.48	1,743,330.97	40.0667524	-104.6321578	8,938.61	2.33	2.16	-0.89
15,044.00	90.28	179.97	7,062.37	-9,030.12	300.52	14,551,163.49	1,743,331.32	40.0665052	-104.6321578	9,028.60	0.79	-0.79	-0.09
15,133.00	90.62	181.24	7,061.67	-9,119.11	299.58	14,551,074.49	1,743,330.75	40.0662608	-104.6321612	9,117.59	1.48	0.38	1.43
15,223.00	90.60	181.47	7,060.71	-9,209.08	297.45	14,550,984.51	1,743,328.99	40.0660138	-104.6321688	9,207.57	0.26	-0.02	0.26
15,313.00	90.36	181.44	7,059.96	-9,299.05	295.16	14,550,894.54	1,743,327.08	40.0657667	-104.6321770	9,297.55	0.27	-0.27	-0.03
15,402.00	89.59	181.76	7,059.99	-9,388.01	292.68	14,550,805.56	1,743,324.96	40.0655224	-104.6321859	9,386.53	0.94	-0.87	0.36
15,492.00	90.91	179.57	7,059.60	-9,478.00	291.63	14,550,715.57	1,743,324.29	40.0652753	-104.6321896	9,476.52	2.84	1.47	-2.43
15,581.00	90.31	179.69	7,058.65	-9,566.99	292.21	14,550,626.59	1,743,325.23	40.0650309	-104.6321875	9,565.50	0.69	-0.67	0.13
15,671.00	89.21	179.90	7,059.03	-9,656.99	292.53	14,550,536.59	1,743,325.92	40.0647838	-104.6321864	9,655.50	1.24	-1.22	0.23
15,760.00	88.66	179.58	7,060.69	-9,745.97	292.94	14,550,447.61	1,743,326.69	40.0645394	-104.6321849	9,744.48	0.71	-0.62	-0.36
15,850.00	91.41	179.00	7,060.63	-9,835.95	294.05	14,550,357.63	1,743,328.18	40.0642923	-104.6321810	9,834.46	3.12	3.06	-0.64
15,940.00	91.22	178.29	7,058.56	-9,925.90	296.18	14,550,267.69	1,743,330.68	40.0640453	-104.6321734	9,924.40	0.82	-0.21	-0.79
16,029.00	91.96	177.29	7,056.10	-10,014.80	299.61	14,550,178.81	1,743,334.48	40.0638011	-104.6321611	10,013.28	1.40	0.83	-1.12
16,119.00	90.28	179.36	7,054.34	-10,104.74	302.24	14,550,088.88	1,743,337.48	40.0635542	-104.6321517	10,103.20	2.96	-1.87	2.30
16,208.00	91.34	179.32	7,053.08	-10,193.72	303.26	14,549,999.90	1,743,338.87	40.0633098	-104.6321481	10,192.18	1.19	1.19	-0.04
16,298.00	88.67	180.18	7,053.07	-10,283.71	303.66	14,549,909.92	1,743,339.63	40.0630627	-104.6321467	10,282.17	3.12	-2.97	0.96
16,388.00	89.57	180.01	7,054.45	-10,373.70	303.51	14,549,819.93	1,743,339.85	40.0628156	-104.6321472	10,372.15	1.02	1.00	-0.19
16,477.00	89.78	179.85	7,054.96	-10,462.70	303.62	14,549,730.93	1,743,340.33	40.0625712	-104.6321468	10,461.15	0.30	0.24	-0.18
16,567.00	90.50	179.68	7,054.74	-10,552.70	303.98	14,549,640.93	1,743,341.07	40.0623240	-104.6321455	10,551.15	0.82	0.80	-0.19

Survey Report

Company:	Occidental Petroleum	Local Co-ordinate Reference:	Well Labrisa 35-5HZ
Project:	Weld County, CO (UTM-NAD83)	TVD Reference:	4970' GL + 26' KB @ 4996.00usft
Site:	2N-65W-35 (Labrisa Pad)	MD Reference:	4970' GL + 26' KB @ 4996.00usft
Well:	Labrisa 35-5HZ	North Reference:	True
Wellbore:	OH	Survey Calculation Method:	Minimum Curvature
Design:	OH	Database:	.Total Directional Production DB

Survey

Measured Depth (usft)	INC (°)	AZI (°)	Vertical Depth (usft)	Local Coordinates +N/-S (usft)	+E/-W (usft)	Map Coordinates Northing (usft)	Easting (usft)	Geo Coordinates Latitude (°)	Longitude (°)	Vertical Section (usft)	Dogleg Rate (°/100usft)	Build Rate (°/100usft)	Turn Rate (°/100usft)
16,656.00	88.81	181.06	7,055.27	-10,641.69	303.41	14,549,551.94	1,743,340.86	40.0620796	-104.6321475	10,640.14	2.45	-1.90	1.55
16,746.00	89.52	180.63	7,056.58	-10,731.67	302.08	14,549,461.96	1,743,339.91	40.0618325	-104.6321523	10,730.12	0.92	0.79	-0.48
16,836.00	89.95	180.16	7,057.00	-10,821.66	301.46	14,549,371.96	1,743,339.66	40.0615854	-104.6321545	10,820.12	0.71	0.48	-0.52
16,925.00	89.66	183.11	7,057.30	-10,910.62	298.92	14,549,283.00	1,743,337.48	40.0613411	-104.6321636	10,909.09	3.33	-0.33	3.31
17,015.00	89.98	184.70	7,057.59	-11,000.40	292.79	14,549,193.18	1,743,331.73	40.0610946	-104.6321855	10,998.90	1.80	0.36	1.77
17,104.00	89.57	186.30	7,057.94	-11,088.99	284.26	14,549,104.56	1,743,323.56	40.0608513	-104.6322160	11,087.53	1.86	-0.46	1.80
17,194.00	88.67	188.73	7,059.32	-11,178.20	272.50	14,549,015.31	1,743,312.16	40.0606063	-104.6322580	11,176.79	2.88	-1.00	2.70
17,284.00	89.32	188.65	7,060.90	-11,267.15	258.90	14,548,926.30	1,743,298.93	40.0603620	-104.6323066	11,265.81	0.73	0.72	-0.09
17,374.00	90.31	191.19	7,061.19	-11,355.80	243.40	14,548,837.59	1,743,283.79	40.0601186	-104.6323620	11,354.53	3.03	1.10	2.82
17,463.00	91.12	190.30	7,060.08	-11,443.23	226.81	14,548,750.09	1,743,267.56	40.0598785	-104.6324213	11,442.03	1.35	0.91	-1.00
17,553.00	91.80	189.78	7,057.78	-11,531.82	211.12	14,548,661.43	1,743,252.24	40.0596352	-104.6324774	11,530.70	0.95	0.76	-0.58
17,642.00	90.42	192.47	7,056.06	-11,619.12	193.95	14,548,574.06	1,743,235.44	40.0593955	-104.6325388	11,618.08	3.40	-1.55	3.02
17,732.00	90.62	191.95	7,055.24	-11,707.08	174.92	14,548,486.03	1,743,216.76	40.0591539	-104.6326068	11,706.13	0.62	0.22	-0.58
Last Survey 17732.00 'MD													
17,800.00	90.62	191.95	7,054.51	-11,773.61	160.84	14,548,419.45	1,743,202.96	40.0589712	-104.6326571	11,772.72	0.00	0.00	0.00
BHL - PTB 17800.00 'MD (86' FSL - 2189' FWL) Sec 11													

Design Annotations

Measured Depth (usft)	Vertical Depth (usft)	Local Coordinates +N/-S (usft)	+E/-W (usft)	Comment
100.00	100.00	0.31	0.01	SHL 1387' FSL & 2004' FWL Sec 35
7,396.99	7,020.52	-1,385.44	336.98	Cross Section Line 7396.99 'MD (0' FNL - 2330' FWL) Sec 02
7,472.48	7,028.44	-1,460.47	338.02	Cross Nio Hard Line 7472.48 'MD (0' FNL - 2332' FWL) Sec 02
12,602.11	7,044.38	-6,589.00	336.62	Cross Section Line 12602.11 'MD (0' FNL - 2367' FWL) Sec 11
17,732.00	7,055.24	-11,707.08	174.92	Last Survey 17732.00 'MD
17,800.00	7,054.51	-11,773.61	160.84	BHL - PTB 17800.00 'MD (86' FSL - 2189' FWL) Sec 11

Checked By: _____ Approved By: _____ Date: _____