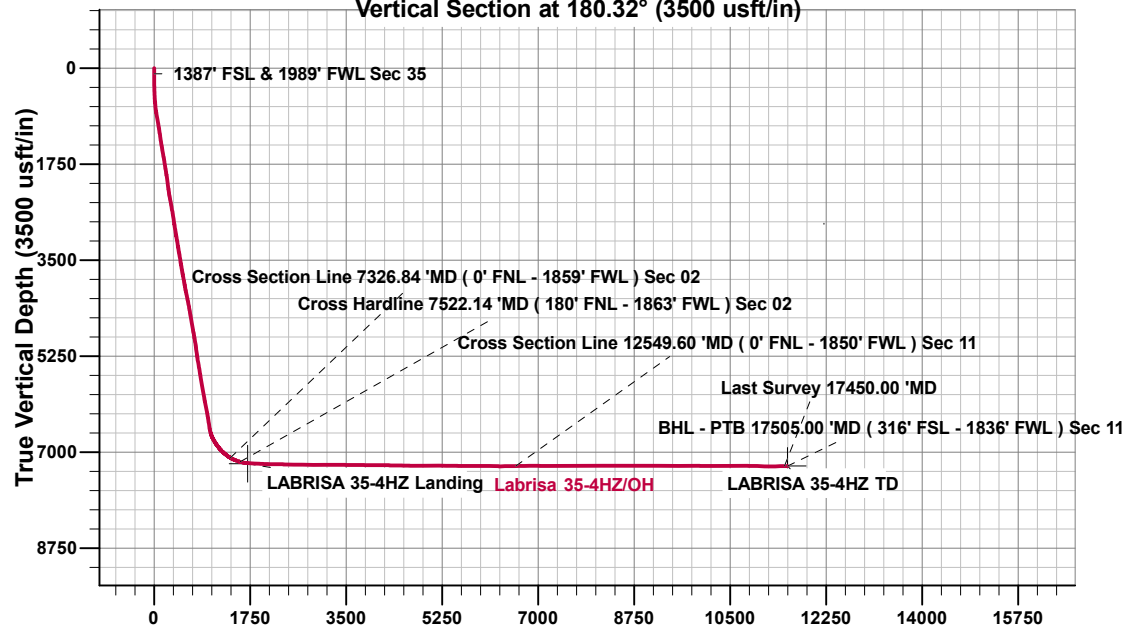


Vertical Section at 180.32° (3500 usft/in)



ANNOTATIONS

MD	Inc	Azi	TVD	+N/-S	+E/-W	Vsect	Departure	Annotation
100.00	0.08	334.27	100.00	0.07	0.03	-0.07	0.12	1387' FSL & 1989' FWL Sec 35
7326.84	59.07	176.72	7101.82	-1386.86	-119.61	1387.51	1399.37	Cross Section Line 7326.84' MD (0' FNL - 1859' FWL) Sec 02
7522.14	74.17	181.81	7175.70	-1566.92	-116.43	1567.55	1579.30	Cross Hardline 7522.14' MD (180' FNL - 1863' FWL) Sec 02
12549.60	90.93	178.50	7253.97	-6590.08	-166.03	6590.91	6603.46	Cross Section Line 12549.60' MD (0' FNL - 1850' FWL) Sec 11
17450.00	90.64	181.43	7255.92	-11489.27	-177.63	11490.08	11503.37	Last Survey 17450.00' MD
17505.00	90.64	181.43	7255.31	-11544.25	-179.01	11545.07	11558.36	BHL - PTB 17505.00' MD (316' FSL - 1836' FWL) Sec 11

Project: Weld County, CO (UTM-NAD83)
 Site: 2N-65W-35 (Labrisa Pad)
 Well: Labrisa 35-4HZ
 Wellbore: OH
 Design: OH

FORMATION TOP DETAILS

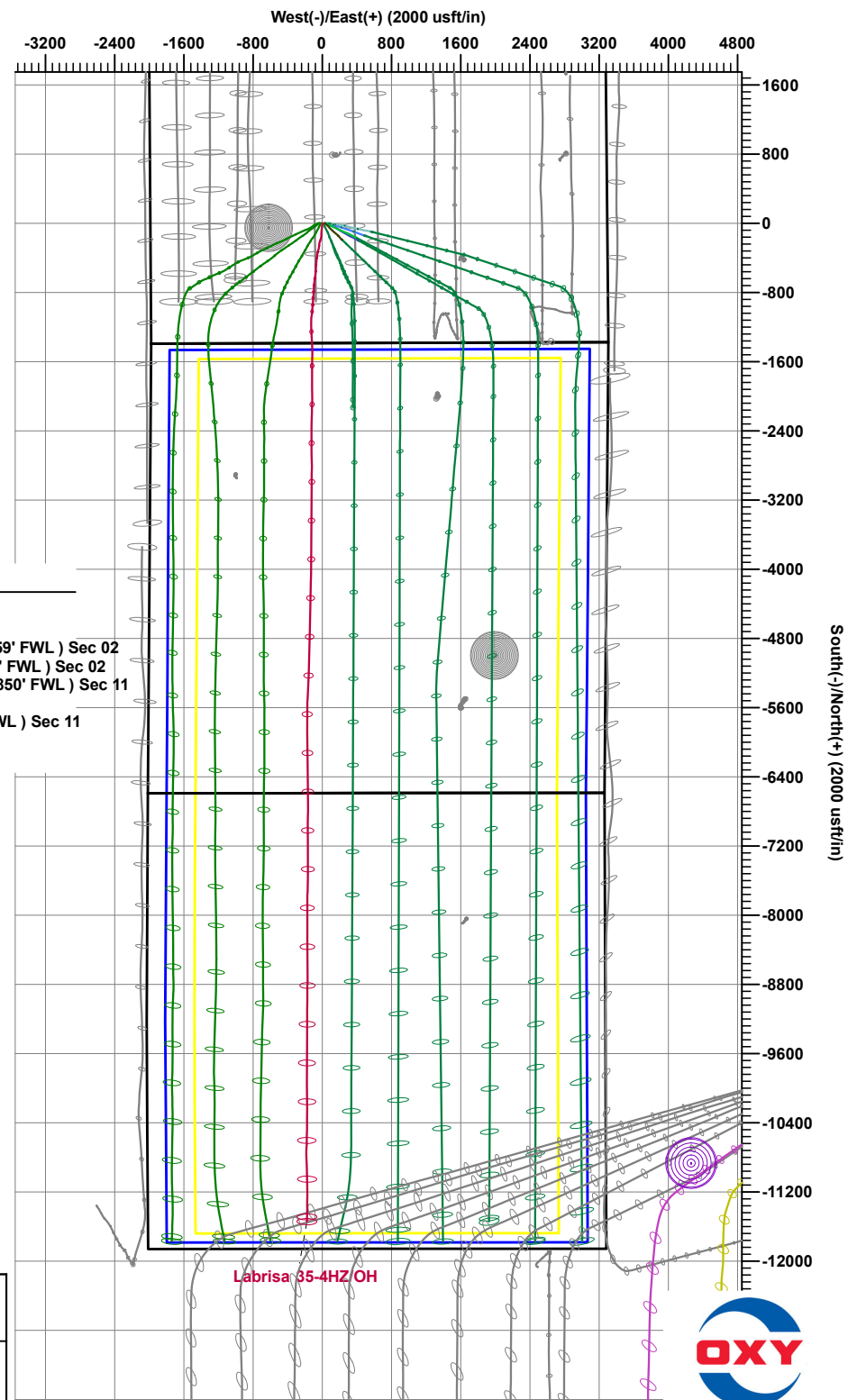
TVDPath	MDPath	Formation
4032.00	4079.01	PKMN
4389.00	4441.22	SSSX
6897.00	7006.50	SSPG
6921.00	7036.00	NBRR
7013.00	7159.34	N470_B_CK
7082.00	7269.09	N700_C_CK
7226.00	8483.04	FRHS

CASING DETAILS

TVD	MD	Name	Size
2036.00	2054.63	9 5/8" Prod Csg	9-5/8
	17584.95		5-1/2

DESIGN TARGET DETAILS

Name	TVD	+N/-S	+E/-W	Northing	Easting	Latitude	Longitude
LABRISA 35-4HZ Landing	7208.60	-1702.04	-141.81	14558489.98	1742843.97	40.0866300	-104.6337920
LABRISA 35-4HZ TD	7252.20	-11545.00	-196.45	14548646.88	1742829.90	40.0596000	-104.6339870



Occidental Petroleum

Weld County, CO (UTM-NAD83)

2N-65W-35 (Labrisa Pad)

Labrisa 35-4HZ

OH

OH



Standard Survey Report

19 February, 2024

Total Report Version 1.60

COMPASS 5000.16 Build 97

Survey Report

Company:	Occidental Petroleum	Local Co-ordinate Reference:	Well Labrisa 35-4HZ
Project:	Weld County, CO (UTM-NAD83)	TVD Reference:	4970' GL + 26' KB @ 4996.00usft
Site:	2N-65W-35 (Labrisa Pad)	MD Reference:	4970' GL + 26' KB @ 4996.00usft
Well:	Labrisa 35-4HZ	North Reference:	True
Wellbore:	OH	Survey Calculation Method:	Minimum Curvature
Design:	OH	Database:	.Total Directional Production DB

Project	Weld County, CO (UTM-NAD83)		
Map System:	Universal Transverse Mercator (US Survey Feet)	System Datum:	Ground Level
Geo Datum:	North American Datum 1983		
Map Zone:	Zone 13N (108 W to 102 W)		

Site	2N-65W-35 (Labrisa Pad)		
Site Position:		Northing:	14,560,192.78 usft
From:	Map	Easting:	1,742,933.63 usft
Position Uncertainty:	0.00 usft	Slot Radius:	13-3/16 "
		Latitude:	40.0913051
		Longitude:	-104.6334463

Well	Labrisa 35-4HZ		
Well Position	+N/-S	0.00 usft	Northing:
	+E/-W	0.00 usft	Easting:
Position Uncertainty	3.28 usft	Wellhead Elevation:	usft
Grid Convergence:	0.24 °		
		Latitude:	40.0913040
		Longitude:	-104.6332850
		Ground Level:	4,970.00 usft

Wellbore	OH		
Magnetics	Model Name	Sample Date	Declination
	HDGM2024	2/10/2024	(°)
			7.75
			Dip Angle
			(°)
			66.23
			Field Strength
			(nT)
			51,473.70000000

Design	OH		
Audit Notes:			
Version:	1.0	Phase:	ACTUAL
Vertical Section:	Depth From (TVD)	+N/-S	+E/-W
	(usft)	(usft)	(usft)
	0.00	0.00	0.00
			Direction
			(°)
			180.32
			Tie On Depth:
			0.00

Survey Program	Date	2/19/2024		
From	To	Survey (Wellbore)	Tool Name	Description
(usft)	(usft)			
89.00	2,102.00	OH (OH)	APC_ISCWSA REV 2 MWD+ Fixed:v2:crustal field declination	
2,210.00	17,505.00	Survey #2 (OH)	MWD+IFR1+SAG+MS_Rev ! ISCWSA MWD + IFR1 + Sag Correction + Multi-Station	

Survey													
Measured Depth	INC	AZI	Vertical Depth	Local Coordinates		Map Coordinates		Geo Coordinates		Vertical Section	Dogleg Rate	Build Rate	Turn Rate
(usft)	(°)	(°)	(usft)	+N/-S	+E/-W	Northing	Easting	Latitude	Longitude	(usft)	(°/100usft)	(°/100usft)	(°/100usft)
				(usft)	(usft)	(usft)	(usft)	(°)	(°)				
0.00	0.00	0.00	0.00	0.00	0.00	14,560,192.59	1,742,978.76	40.0913040	-104.6332850	0.00	0.00	0.00	0.00
89.00	0.08	25.10	89.00	0.06	0.03	14,560,192.65	1,742,978.78	40.0913042	-104.6332849	-0.06	0.09	0.09	0.00
100.00	0.08	334.27	100.00	0.07	0.03	14,560,192.66	1,742,978.78	40.0913042	-104.6332849	-0.07	0.61	-0.03	-462.13
1387' FSL & 1989' FWL Sec 35													
181.00	0.53	274.75	181.00	0.15	-0.37	14,560,192.74	1,742,978.39	40.0913044	-104.6332863	-0.15	0.61	0.56	-73.48
272.00	0.44	178.12	272.00	-0.16	-0.78	14,560,192.42	1,742,977.98	40.0913036	-104.6332878	0.17	0.80	-0.10	-106.19

Survey Report

Company:	Occidental Petroleum	Local Co-ordinate Reference:	Well Labrisa 35-4HZ
Project:	Weld County, CO (UTM-NAD83)	TVD Reference:	4970' GL + 26' KB @ 4996.00usft
Site:	2N-65W-35 (Labrisa Pad)	MD Reference:	4970' GL + 26' KB @ 4996.00usft
Well:	Labrisa 35-4HZ	North Reference:	True
Wellbore:	OH	Survey Calculation Method:	Minimum Curvature
Design:	OH	Database:	.Total Directional Production DB

Survey													
Measured Depth (usft)	INC (°)	AZI (°)	Vertical Depth (usft)	Local Coordinates		Map Coordinates		Geo Coordinates		Vertical Section (usft)	Dogleg Rate (°/100usft)	Build Rate (°/100usft)	Turn Rate (°/100usft)
				+N/-S (usft)	+E/-W (usft)	Northing (usft)	Easting (usft)	Latitude (°)	Longitude (°)				
363.00	1.81	169.48	362.98	-1.93	-0.50	14,560,190.66	1,742,978.26	40.0912987	-104.6332868	1.93	1.51	1.51	-9.49
452.00	3.26	184.81	451.89	-5.83	-0.46	14,560,186.76	1,742,978.32	40.0912880	-104.6332866	5.83	1.78	1.63	17.22
542.00	2.58	186.83	541.77	-10.39	-0.92	14,560,182.19	1,742,977.88	40.0912755	-104.6332883	10.40	0.76	-0.76	2.24
631.00	4.58	179.58	630.59	-15.93	-1.13	14,560,176.65	1,742,977.69	40.0912603	-104.6332890	15.94	2.30	2.25	-8.15
721.00	6.25	187.12	720.19	-24.39	-1.71	14,560,168.19	1,742,977.15	40.0912371	-104.6332911	24.40	2.01	1.86	8.38
810.00	9.59	183.94	808.33	-36.60	-2.82	14,560,155.98	1,742,976.09	40.0912035	-104.6332951	36.61	3.78	3.75	-3.57
900.00	10.37	186.93	896.97	-52.12	-4.31	14,560,140.46	1,742,974.66	40.0911609	-104.6333004	52.14	1.04	0.87	3.32
989.00	10.49	187.76	984.50	-68.10	-6.37	14,560,124.47	1,742,972.67	40.0911170	-104.6333078	68.13	0.22	0.13	0.93
1,079.00	9.29	189.94	1,073.16	-83.37	-8.73	14,560,109.18	1,742,970.37	40.0910751	-104.6333162	83.42	1.40	-1.33	2.42
1,168.00	8.44	184.05	1,161.10	-96.96	-10.43	14,560,095.59	1,742,968.72	40.0910378	-104.6333223	97.02	1.40	-0.96	-6.62
1,258.00	8.28	179.53	1,250.14	-110.03	-10.85	14,560,082.52	1,742,968.36	40.0910019	-104.6333238	110.09	0.75	-0.18	-5.02
1,347.00	8.80	176.94	1,338.15	-123.24	-10.43	14,560,069.31	1,742,968.83	40.0909656	-104.6333223	123.29	0.73	0.58	-2.91
1,437.00	9.80	180.70	1,426.97	-137.77	-10.16	14,560,054.78	1,742,969.17	40.0909257	-104.6333213	137.83	1.30	1.11	4.18
1,526.00	10.16	191.52	1,514.63	-153.04	-11.82	14,560,039.50	1,742,967.57	40.0908838	-104.6333272	153.10	2.14	0.40	12.16
1,616.00	10.37	190.96	1,603.19	-168.77	-14.94	14,560,023.76	1,742,964.51	40.0908406	-104.6333384	168.85	0.26	0.23	-0.62
1,705.00	9.51	198.71	1,690.86	-183.60	-18.82	14,560,008.92	1,742,960.69	40.0907999	-104.6333523	183.70	1.78	-0.97	8.71
1,795.00	9.21	196.46	1,779.66	-197.55	-23.25	14,559,994.95	1,742,956.32	40.0907615	-104.6333681	197.67	0.53	-0.33	-2.50
1,884.00	9.96	200.53	1,867.42	-211.59	-27.97	14,559,980.89	1,742,951.66	40.0907230	-104.6333850	211.74	1.14	0.84	4.57
1,974.00	8.74	189.95	1,956.23	-225.61	-31.88	14,559,966.85	1,742,947.81	40.0906845	-104.6333990	225.79	2.34	-1.36	-11.76
2,063.00	7.90	188.56	2,044.29	-238.32	-33.96	14,559,954.13	1,742,945.78	40.0906496	-104.6334064	238.51	0.97	-0.94	-1.56
2,102.00	7.97	185.83	2,082.92	-243.66	-34.63	14,559,948.79	1,742,945.13	40.0906349	-104.6334088	243.85	0.98	0.18	-7.00
2,210.00	7.41	184.40	2,189.94	-258.05	-35.93	14,559,934.39	1,742,943.89	40.0905954	-104.6334134	258.25	0.55	-0.52	-1.32
2,300.00	8.88	192.91	2,279.04	-270.61	-37.92	14,559,921.83	1,742,941.95	40.0905609	-104.6334206	270.82	2.11	1.63	9.46
2,389.00	11.27	192.01	2,366.66	-285.81	-41.27	14,559,906.61	1,742,938.67	40.0905192	-104.6334325	286.04	2.69	2.69	-1.01
2,479.00	10.66	192.64	2,455.01	-302.54	-44.92	14,559,889.87	1,742,935.08	40.0904732	-104.6334456	302.79	0.69	-0.68	0.70
2,568.00	10.33	192.65	2,542.53	-318.36	-48.47	14,559,874.04	1,742,931.60	40.0904298	-104.6334583	318.62	0.37	-0.37	0.01
2,658.00	9.94	192.39	2,631.12	-333.82	-51.90	14,559,858.56	1,742,928.23	40.0903873	-104.6334706	334.10	0.44	-0.43	-0.29
2,748.00	9.12	192.10	2,719.88	-348.38	-55.06	14,559,843.99	1,742,925.13	40.0903473	-104.6334819	348.68	0.91	-0.91	-0.32
2,837.00	8.17	195.03	2,807.87	-361.38	-58.18	14,559,830.97	1,742,922.06	40.0903116	-104.6334930	361.70	1.18	-1.07	3.29
2,926.00	9.39	186.14	2,895.83	-374.71	-60.60	14,559,817.63	1,742,919.70	40.0902750	-104.6335016	375.04	2.05	1.37	-9.99
3,016.00	8.72	186.39	2,984.70	-388.79	-62.14	14,559,803.55	1,742,918.22	40.0902364	-104.6335072	389.13	0.75	-0.74	0.28
3,105.00	10.72	183.67	3,072.42	-403.76	-63.43	14,559,788.57	1,742,917.00	40.0901953	-104.6335117	404.11	2.31	2.25	-3.06
3,195.00	9.72	184.88	3,160.99	-419.68	-64.61	14,559,772.65	1,742,915.88	40.0901515	-104.6335160	420.04	1.14	-1.11	1.34
3,285.00	8.62	187.66	3,249.84	-433.94	-66.15	14,559,758.39	1,742,914.39	40.0901124	-104.6335215	434.30	1.32	-1.22	3.09
3,374.00	10.50	186.77	3,337.60	-448.60	-68.00	14,559,743.71	1,742,912.61	40.0900721	-104.6335281	448.97	2.12	2.11	-1.00
3,464.00	9.19	188.14	3,426.28	-463.86	-69.98	14,559,728.45	1,742,910.69	40.0900302	-104.6335352	464.24	1.48	-1.46	1.52
3,553.00	8.87	187.99	3,514.17	-477.69	-71.94	14,559,714.61	1,742,908.78	40.0899922	-104.6335422	478.08	0.36	-0.36	-0.17
3,643.00	10.62	179.75	3,602.87	-492.86	-72.87	14,559,699.44	1,742,907.92	40.0899506	-104.6335455	493.25	2.48	1.94	-9.16

Survey Report

Company:	Occidental Petroleum	Local Co-ordinate Reference:	Well Labrisa 35-4HZ
Project:	Weld County, CO (UTM-NAD83)	TVD Reference:	4970' GL + 26' KB @ 4996.00usft
Site:	2N-65W-35 (Labrisa Pad)	MD Reference:	4970' GL + 26' KB @ 4996.00usft
Well:	Labrisa 35-4HZ	North Reference:	True
Wellbore:	OH	Survey Calculation Method:	Minimum Curvature
Design:	OH	Database:	.Total Directional Production DB

Survey													
Measured Depth (usft)	INC (°)	AZI (°)	Vertical Depth (usft)	Local Coordinates +N/-S (usft)	+E/-W (usft)	Map Coordinates Northing (usft)	Easting (usft)	Geo Coordinates Latitude (°)	Longituge (°)	Vertical Section (usft)	Dogleg Rate (°/100usft)	Build Rate (°/100usft)	Turn Rate (°/100usft)
3,732.00	9.07	179.63	3,690.56	-508.07	-72.79	14,559,684.22	1,742,908.06	40.0899088	-104.6335452	508.47	1.74	-1.74	-0.13
3,822.00	10.92	187.52	3,779.20	-523.62	-73.86	14,559,668.67	1,742,907.06	40.0898661	-104.6335491	524.02	2.55	2.06	8.77
3,911.00	11.06	184.27	3,866.56	-540.49	-75.60	14,559,651.79	1,742,905.39	40.0898198	-104.6335553	540.90	0.71	0.16	-3.65
4,001.00	9.15	184.75	3,955.16	-556.23	-76.83	14,559,636.05	1,742,904.22	40.0897766	-104.6335597	556.65	2.12	-2.12	0.53
4,091.00	10.97	187.09	4,043.78	-571.86	-78.48	14,559,620.41	1,742,902.63	40.0897336	-104.6335656	572.29	2.07	2.02	2.60
4,180.00	12.46	185.61	4,130.92	-589.82	-80.47	14,559,602.44	1,742,900.72	40.0896843	-104.6335727	590.26	1.71	1.67	-1.66
4,270.00	11.87	187.09	4,218.90	-608.67	-82.56	14,559,583.58	1,742,898.71	40.0896326	-104.6335802	609.12	0.74	-0.66	1.64
4,359.00	10.68	188.07	4,306.18	-625.92	-84.85	14,559,566.33	1,742,896.49	40.0895852	-104.6335883	626.38	1.35	-1.34	1.10
4,449.00	10.10	189.06	4,394.70	-641.97	-87.26	14,559,550.27	1,742,894.14	40.0895411	-104.6335970	642.45	0.67	-0.64	1.10
4,538.00	9.49	190.02	4,482.41	-656.90	-89.77	14,559,535.32	1,742,891.70	40.0895001	-104.6336059	657.39	0.71	-0.69	1.08
4,628.00	10.52	182.82	4,571.04	-672.41	-91.46	14,559,519.80	1,742,890.07	40.0894575	-104.6336120	672.91	1.80	1.14	-8.00
4,718.00	9.78	184.51	4,659.63	-688.24	-92.47	14,559,503.97	1,742,889.13	40.0894140	-104.6336156	688.75	0.89	-0.82	1.88
4,807.00	9.49	185.08	4,747.38	-703.08	-93.71	14,559,489.12	1,742,887.95	40.0893733	-104.6336200	703.60	0.34	-0.33	0.64
4,897.00	11.14	183.79	4,835.92	-719.15	-94.94	14,559,473.05	1,742,886.78	40.0893292	-104.6336244	719.67	1.85	1.83	-1.43
5,008.00	8.96	184.28	4,945.21	-738.47	-96.30	14,559,453.73	1,742,885.51	40.0892761	-104.6336293	739.00	1.97	-1.96	0.44
5,098.00	9.80	181.89	5,034.00	-753.12	-97.07	14,559,439.08	1,742,884.79	40.0892359	-104.6336320	753.65	1.03	0.93	-2.66
5,188.00	7.19	180.38	5,123.01	-766.41	-97.36	14,559,425.79	1,742,884.56	40.0891994	-104.6336331	766.94	2.91	-2.90	-1.68
5,277.00	7.22	187.86	5,211.31	-777.52	-98.16	14,559,414.67	1,742,883.80	40.0891689	-104.6336359	778.05	1.05	0.03	8.40
5,366.00	9.69	186.46	5,299.34	-790.50	-99.77	14,559,401.68	1,742,882.24	40.0891332	-104.6336417	791.05	2.78	2.78	-1.57
5,456.00	9.58	186.71	5,388.07	-805.47	-101.50	14,559,386.71	1,742,880.58	40.0890921	-104.6336479	806.02	0.13	-0.12	0.28
5,546.00	9.20	190.37	5,476.86	-819.98	-103.67	14,559,372.19	1,742,878.47	40.0890523	-104.6336556	820.55	0.79	-0.42	4.07
5,635.00	9.28	185.60	5,564.71	-834.12	-105.65	14,559,358.04	1,742,876.55	40.0890134	-104.6336627	834.70	0.87	0.09	-5.36
5,725.00	9.83	180.80	5,653.46	-849.03	-106.46	14,559,343.13	1,742,875.79	40.0889725	-104.6336656	849.61	1.08	0.61	-5.33
5,815.00	9.84	179.32	5,742.14	-864.40	-106.48	14,559,327.76	1,742,875.84	40.0889303	-104.6336657	864.98	0.28	0.01	-1.64
5,905.00	9.74	184.00	5,830.83	-879.68	-106.92	14,559,312.47	1,742,875.46	40.0888883	-104.6336673	880.27	0.89	-0.11	5.20
5,994.00	10.13	185.64	5,918.49	-894.98	-108.22	14,559,297.17	1,742,874.23	40.0888463	-104.6336719	895.57	0.54	0.44	1.84
6,084.00	10.18	182.03	6,007.08	-910.81	-109.27	14,559,281.34	1,742,873.24	40.0888028	-104.6336757	911.40	0.71	0.06	-4.01
6,173.00	11.16	179.28	6,094.54	-927.28	-109.45	14,559,264.87	1,742,873.14	40.0887576	-104.6336763	927.88	1.24	1.10	-3.09
6,263.00	11.08	185.08	6,182.86	-944.60	-110.10	14,559,247.54	1,742,872.55	40.0887100	-104.6336786	945.20	1.25	-0.09	6.44
6,353.00	11.06	190.20	6,271.19	-961.71	-112.40	14,559,230.42	1,742,870.33	40.0886631	-104.6336868	962.33	1.09	-0.02	5.69
6,442.00	9.93	184.47	6,358.70	-977.77	-114.51	14,559,214.36	1,742,868.28	40.0886190	-104.6336944	978.39	1.73	-1.27	-6.44
6,532.00	8.62	183.45	6,447.52	-992.24	-115.52	14,559,199.89	1,742,867.33	40.0885792	-104.6336980	992.87	1.47	-1.46	-1.13
6,621.00	7.97	186.20	6,535.59	-1,005.03	-116.58	14,559,187.09	1,742,866.32	40.0885441	-104.6337018	1,005.66	0.86	-0.73	3.09
6,711.00	13.54	185.55	6,623.97	-1,021.73	-118.28	14,559,170.38	1,742,864.69	40.0884982	-104.6337079	1,022.38	6.19	6.19	-0.72
6,800.00	23.16	186.64	6,708.35	-1,049.55	-121.32	14,559,142.55	1,742,861.77	40.0884218	-104.6337187	1,050.21	10.82	10.81	1.22
6,890.00	29.36	187.32	6,789.02	-1,089.05	-126.18	14,559,103.03	1,742,857.07	40.0883134	-104.6337361	1,089.74	6.90	6.89	0.76
6,980.00	35.72	180.86	6,864.88	-1,137.27	-129.39	14,559,054.80	1,742,854.06	40.0881810	-104.6337476	1,137.97	8.04	7.07	-7.18

Survey Report

Company:	Occidental Petroleum	Local Co-ordinate Reference:	Well Labrisa 35-4HZ
Project:	Weld County, CO (UTM-NAD83)	TVD Reference:	4970' GL + 26' KB @ 4996.00usft
Site:	2N-65W-35 (Labrisa Pad)	MD Reference:	4970' GL + 26' KB @ 4996.00usft
Well:	Labrisa 35-4HZ	North Reference:	True
Wellbore:	OH	Survey Calculation Method:	Minimum Curvature
Design:	OH	Database:	.Total Directional Production DB

Survey													
Measured Depth (usft)	INC (°)	AZI (°)	Vertical Depth (usft)	Local Coordinates +N/-S (usft)	+E/-W (usft)	Map Coordinates Northing (usft)	Easting (usft)	Geo Coordinates Latitude (°)	Longituge (°)	Vertical Section (usft)	Dogleg Rate (°/100usft)	Build Rate (°/100usft)	Turn Rate (°/100usft)
7,069.00	39.66	177.57	6,935.30	-1,191.65	-128.57	14,559,000.42	1,742,855.10	40.0880316	-104.6337447	1,192.35	4.97	4.43	-3.70
7,158.00	47.52	178.04	6,999.71	-1,252.92	-126.24	14,558,939.16	1,742,857.68	40.0878634	-104.6337363	1,253.61	8.84	8.83	0.53
7,248.00	52.52	176.96	7,057.52	-1,321.79	-123.21	14,558,870.30	1,742,860.99	40.0876742	-104.6337255	1,322.46	5.63	5.56	-1.20
7,326.84	59.07	176.72	7,101.82	-1,386.86	-119.61	14,558,805.25	1,742,864.86	40.0874955	-104.6337126	1,387.51	8.31	8.30	-0.31
Cross Section Line 7326.84 'MD (0' FNL - 1859' FWL) Sec 02													
7,337.00	59.91	176.69	7,106.97	-1,395.60	-119.11	14,558,796.51	1,742,865.40	40.0874715	-104.6337108	1,396.24	8.31	8.30	-0.28
7,427.00	69.19	178.64	7,145.61	-1,476.71	-115.86	14,558,715.42	1,742,868.99	40.0872488	-104.6336992	1,477.33	10.49	10.31	2.17
7,517.00	73.67	181.87	7,174.27	-1,561.98	-116.27	14,558,630.14	1,742,868.93	40.0870146	-104.6337007	1,562.61	6.03	4.98	3.59
7,522.14	74.17	181.81	7,175.70	-1,566.92	-116.43	14,558,625.20	1,742,868.79	40.0870011	-104.6337012	1,567.55	9.76	9.69	-1.15
Cross Hardline 7522.14 'MD (180' FNL - 1863' FWL) Sec 02													
7,606.00	82.30	180.88	7,192.78	-1,648.93	-118.34	14,558,543.19	1,742,867.21	40.0867759	-104.6337081	1,649.56	9.76	9.70	-1.11
7,696.00	86.96	180.08	7,201.20	-1,738.50	-119.09	14,558,453.61	1,742,866.83	40.0865299	-104.6337108	1,739.14	5.25	5.18	-0.89
7,785.00	87.03	179.50	7,205.87	-1,827.38	-118.77	14,558,364.74	1,742,867.52	40.0862858	-104.6337096	1,828.01	0.66	0.08	-0.65
7,875.00	87.10	179.87	7,210.48	-1,917.26	-118.27	14,558,274.86	1,742,868.39	40.0860390	-104.6337078	1,917.89	0.42	0.08	0.41
7,964.00	86.63	178.72	7,215.34	-2,006.12	-117.18	14,558,186.01	1,742,869.85	40.0857950	-104.6337039	2,006.74	1.39	-0.53	-1.29
8,054.00	89.68	182.57	7,218.24	-2,096.04	-118.19	14,558,096.08	1,742,869.20	40.0855481	-104.6337075	2,096.67	5.46	3.39	4.28
8,143.00	89.42	181.22	7,218.94	-2,184.99	-121.14	14,558,007.12	1,742,866.63	40.0853038	-104.6337181	2,185.63	1.54	-0.29	-1.52
8,233.00	89.16	181.23	7,220.06	-2,274.96	-123.06	14,557,917.14	1,742,865.08	40.0850567	-104.6337249	2,275.61	0.29	-0.29	0.01
8,322.00	88.48	180.42	7,221.89	-2,363.93	-124.34	14,557,828.17	1,742,864.16	40.0848124	-104.6337295	2,364.59	1.19	-0.76	-0.91
8,412.00	88.83	179.97	7,224.00	-2,453.90	-124.65	14,557,738.19	1,742,864.23	40.0845653	-104.6337306	2,454.56	0.63	0.39	-0.50
8,501.00	89.04	180.38	7,225.66	-2,542.89	-124.92	14,557,649.21	1,742,864.32	40.0843210	-104.6337316	2,543.54	0.52	0.24	0.46
8,591.00	89.19	179.16	7,227.05	-2,632.87	-124.56	14,557,559.23	1,742,865.05	40.0840738	-104.6337303	2,633.53	1.37	0.17	-1.36
8,680.00	88.68	178.05	7,228.70	-2,721.83	-122.39	14,557,470.28	1,742,867.59	40.0838296	-104.6337225	2,722.47	1.37	-0.57	-1.25
8,770.00	89.57	180.75	7,230.08	-2,811.81	-121.45	14,557,380.31	1,742,868.90	40.0835825	-104.6337192	2,812.44	3.16	0.99	3.00
8,860.00	89.55	179.99	7,230.77	-2,901.80	-122.03	14,557,290.31	1,742,868.69	40.0833353	-104.6337212	2,902.44	0.84	-0.02	-0.84
8,949.00	89.99	179.71	7,231.12	-2,990.80	-121.80	14,557,201.31	1,742,869.29	40.0830909	-104.6337204	2,991.43	0.59	0.49	-0.31
9,039.00	89.78	181.13	7,231.30	-3,080.79	-122.46	14,557,111.32	1,742,869.00	40.0828438	-104.6337228	3,081.43	1.59	-0.23	1.58
9,128.00	90.13	180.43	7,231.37	-3,169.79	-123.67	14,557,022.32	1,742,868.15	40.0825994	-104.6337271	3,170.43	0.88	0.39	-0.79
9,218.00	90.86	179.77	7,230.60	-3,259.78	-123.83	14,556,932.33	1,742,868.37	40.0823523	-104.6337277	3,260.42	1.09	0.81	-0.73
9,308.00	91.15	181.33	7,229.02	-3,349.76	-124.69	14,556,842.35	1,742,867.88	40.0821052	-104.6337307	3,350.40	1.76	0.32	1.73
9,397.00	87.33	180.40	7,230.20	-3,438.72	-126.03	14,556,753.38	1,742,866.90	40.0818609	-104.6337355	3,439.37	4.42	-4.29	-1.04
9,487.00	88.80	180.41	7,233.24	-3,528.67	-126.67	14,556,663.43	1,742,866.63	40.0816139	-104.6337378	3,529.32	1.63	1.63	0.01
9,576.00	90.25	180.92	7,233.97	-3,617.66	-127.70	14,556,574.44	1,742,865.97	40.0813695	-104.6337415	3,618.31	1.73	1.63	0.57
9,666.00	89.50	180.62	7,234.17	-3,707.65	-128.91	14,556,484.44	1,742,865.13	40.0811224	-104.6337458	3,708.31	0.90	-0.83	-0.33
9,755.00	89.41	179.90	7,235.02	-3,796.64	-129.32	14,556,395.45	1,742,865.09	40.0808780	-104.6337473	3,797.30	0.82	-0.10	-0.81
9,845.00	88.74	178.72	7,236.47	-3,886.62	-128.23	14,556,305.47	1,742,866.55	40.0806309	-104.6337434	3,887.28	1.51	-0.74	-1.31
9,934.00	89.27	181.33	7,238.02	-3,975.60	-128.27	14,556,216.50	1,742,866.87	40.0803866	-104.6337435	3,976.25	2.99	0.60	2.93
10,024.00	90.76	181.66	7,237.99	-4,065.57	-130.62	14,556,126.52	1,742,864.90	40.0801395	-104.6337519	4,066.23	1.70	1.66	0.37

Survey Report

Company:	Occidental Petroleum	Local Co-ordinate Reference:	Well Labrisa 35-4HZ
Project:	Weld County, CO (UTM-NAD83)	TVD Reference:	4970' GL + 26' KB @ 4996.00usft
Site:	2N-65W-35 (Labrisa Pad)	MD Reference:	4970' GL + 26' KB @ 4996.00usft
Well:	Labrisa 35-4HZ	North Reference:	True
Wellbore:	OH	Survey Calculation Method:	Minimum Curvature
Design:	OH	Database:	.Total Directional Production DB

Survey													
Measured Depth (usft)	INC (°)	AZI (°)	Vertical Depth (usft)	Local Coordinates +N/-S (usft)	Local Coordinates +E/-W (usft)	Map Coordinates Northing (usft)	Map Coordinates Easting (usft)	Geo Coordinates Latitude (°)	Geo Coordinates Longitude (°)	Vertical Section (usft)	Dogleg Rate (°/100usft)	Build Rate (°/100usft)	Turn Rate (°/100usft)
10,114.00	90.33	181.02	7,237.14	-4,155.54	-132.72	14,556,036.54	1,742,863.16	40.0798924	-104.6337594	4,156.21	0.86	-0.48	-0.71
10,203.00	88.41	180.83	7,238.12	-4,244.52	-134.16	14,555,947.56	1,742,862.09	40.0796481	-104.6337646	4,245.20	2.17	-2.16	-0.21
10,293.00	89.81	181.37	7,239.51	-4,334.49	-135.89	14,555,857.58	1,742,860.74	40.0794010	-104.6337707	4,335.18	1.67	1.56	0.60
10,383.00	89.82	182.27	7,239.80	-4,424.44	-138.75	14,555,767.62	1,742,858.25	40.0791540	-104.6337810	4,425.15	1.00	0.01	1.00
10,472.00	87.35	181.50	7,242.00	-4,513.36	-141.67	14,555,678.69	1,742,855.69	40.0789098	-104.6337914	4,514.08	2.91	-2.78	-0.87
10,562.00	88.62	180.94	7,245.17	-4,603.28	-143.59	14,555,588.76	1,742,854.15	40.0786629	-104.6337983	4,604.01	1.54	1.41	-0.62
10,651.00	90.23	180.85	7,246.06	-4,692.26	-144.98	14,555,499.77	1,742,853.12	40.0784185	-104.6338032	4,693.00	1.81	1.81	-0.10
10,741.00	89.18	181.22	7,246.52	-4,782.24	-146.60	14,555,409.78	1,742,851.87	40.0781714	-104.6338090	4,782.99	1.24	-1.17	0.41
10,831.00	89.79	180.79	7,247.33	-4,872.22	-148.18	14,555,319.80	1,742,850.66	40.0779243	-104.6338147	4,872.98	0.83	0.68	-0.48
10,920.00	90.94	180.68	7,246.76	-4,961.21	-149.32	14,555,230.80	1,742,849.89	40.0776799	-104.6338188	4,961.97	1.30	1.29	-0.12
11,010.00	90.54	182.10	7,245.60	-5,051.18	-151.51	14,555,140.83	1,742,848.07	40.0774329	-104.6338266	5,051.94	1.64	-0.44	1.58
11,099.00	90.35	182.93	7,244.91	-5,140.09	-155.41	14,555,051.91	1,742,844.53	40.0771887	-104.6338405	5,140.88	0.96	-0.21	0.93
11,189.00	88.88	182.61	7,245.52	-5,229.98	-159.76	14,554,962.00	1,742,840.56	40.0769419	-104.6338561	5,230.79	1.67	-1.63	-0.36
11,279.00	89.27	182.29	7,246.97	-5,319.88	-163.61	14,554,872.08	1,742,837.08	40.0766950	-104.6338698	5,320.71	0.56	0.43	-0.36
11,368.00	89.92	181.93	7,247.60	-5,408.82	-166.88	14,554,783.13	1,742,834.17	40.0764508	-104.6338815	5,409.67	0.83	0.73	-0.40
11,458.00	88.62	182.36	7,248.74	-5,498.75	-170.25	14,554,693.19	1,742,831.17	40.0762038	-104.6338936	5,499.61	1.52	-1.44	0.48
11,547.00	89.45	181.30	7,250.24	-5,587.69	-173.09	14,554,604.24	1,742,828.70	40.0759596	-104.6339037	5,588.57	1.51	0.93	-1.19
11,637.00	89.25	180.90	7,251.26	-5,677.67	-174.82	14,554,514.25	1,742,827.34	40.0757125	-104.6339099	5,678.55	0.50	-0.22	-0.44
11,727.00	89.74	179.94	7,252.06	-5,767.66	-175.48	14,554,424.26	1,742,827.05	40.0754653	-104.6339122	5,768.55	1.20	0.54	-1.07
11,816.00	90.81	178.77	7,251.63	-5,856.65	-174.48	14,554,335.27	1,742,828.42	40.0752210	-104.6339087	5,857.53	1.78	1.20	-1.31
11,906.00	89.61	179.39	7,251.30	-5,946.63	-173.03	14,554,245.29	1,742,830.24	40.0749739	-104.6339035	5,947.51	1.50	-1.33	0.69
11,995.00	90.28	179.08	7,251.39	-6,035.63	-171.85	14,554,156.31	1,742,831.79	40.0747295	-104.6338992	6,036.49	0.83	0.75	-0.35
12,085.00	88.28	180.54	7,252.52	-6,125.61	-171.55	14,554,066.32	1,742,832.46	40.0744824	-104.6338982	6,126.47	2.75	-2.22	1.62
12,175.00	88.29	179.41	7,255.21	-6,215.57	-171.51	14,553,976.37	1,742,832.87	40.0742353	-104.6338980	6,216.43	1.26	0.01	-1.26
12,264.00	89.91	179.86	7,256.61	-6,304.55	-170.94	14,553,887.39	1,742,833.80	40.0739910	-104.6338960	6,305.41	1.89	1.82	0.51
12,354.00	90.55	179.57	7,256.25	-6,394.55	-170.49	14,553,797.39	1,742,834.62	40.0737438	-104.6338944	6,395.40	0.78	0.71	-0.32
12,444.00	90.56	178.61	7,255.38	-6,484.53	-169.07	14,553,707.41	1,742,836.42	40.0734967	-104.6338893	6,485.38	1.07	0.01	-1.07
12,533.00	90.91	178.11	7,254.23	-6,573.49	-166.52	14,553,618.47	1,742,839.34	40.0732524	-104.6338802	6,574.32	0.69	0.39	-0.56
12,549.60	90.93	178.50	7,253.97	-6,590.08	-166.03	14,553,601.88	1,742,839.90	40.0732069	-104.6338784	6,590.91	2.35	0.12	2.34
Cross Section Line 12549.60 'MD (0' FNL - 1850' FWL) Sec 11													
12,623.00	91.02	180.22	7,252.72	-6,663.46	-165.21	14,553,528.50	1,742,841.02	40.0730054	-104.6338755	6,664.28	2.35	0.12	2.34
12,713.00	91.44	179.60	7,250.79	-6,753.44	-165.07	14,553,438.53	1,742,841.53	40.0727583	-104.6338750	6,754.26	0.83	0.47	-0.69
12,802.00	90.39	181.61	7,249.36	-6,842.42	-166.01	14,553,349.54	1,742,840.96	40.0725139	-104.6338783	6,843.24	2.55	-1.18	2.26
12,892.00	90.54	181.44	7,248.63	-6,932.38	-168.40	14,553,259.57	1,742,838.93	40.0722669	-104.6338869	6,933.22	0.25	0.17	-0.19
12,981.00	88.32	180.29	7,249.52	-7,021.36	-169.74	14,553,170.59	1,742,837.96	40.0720225	-104.6338917	7,022.20	2.81	-2.49	-1.29
13,071.00	89.71	179.18	7,251.07	-7,111.35	-169.33	14,553,080.61	1,742,838.74	40.0717754	-104.6338902	7,112.18	1.98	1.54	-1.23
13,161.00	89.25	178.28	7,251.88	-7,201.32	-167.33	14,552,990.64	1,742,841.11	40.0715283	-104.6338831	7,202.14	1.12	-0.51	-1.00
13,251.00	90.39	180.66	7,252.17	-7,291.31	-166.50	14,552,900.66	1,742,842.31	40.0712812	-104.6338801	7,292.12	2.93	1.27	2.64

Survey Report

Company:	Occidental Petroleum	Local Co-ordinate Reference:	Well Labrisa 35-4HZ
Project:	Weld County, CO (UTM-NAD83)	TVD Reference:	4970' GL + 26' KB @ 4996.00usft
Site:	2N-65W-35 (Labrisa Pad)	MD Reference:	4970' GL + 26' KB @ 4996.00usft
Well:	Labrisa 35-4HZ	North Reference:	True
Wellbore:	OH	Survey Calculation Method:	Minimum Curvature
Design:	OH	Database:	.Total Directional Production DB

Survey													
Measured Depth (usft)	INC (°)	AZI (°)	Vertical Depth (usft)	Local Coordinates +N/-S (usft)	Local Coordinates +E/-W (usft)	Map Coordinates Northing (usft)	Map Coordinates Easting (usft)	Geo Coordinates Latitude (°)	Geo Coordinates Longitude (°)	Vertical Section (usft)	Dogleg Rate (°/100usft)	Build Rate (°/100usft)	Turn Rate (°/100usft)
13,340.00	90.64	180.07	7,251.37	-7,380.30	-167.07	14,552,811.66	1,742,842.11	40.0710368	-104.6338821	7,381.12	0.72	0.28	-0.66
13,429.00	91.28	179.26	7,249.87	-7,469.28	-166.55	14,552,722.68	1,742,843.00	40.0707925	-104.6338803	7,470.10	1.16	0.72	-0.91
13,519.00	90.45	181.56	7,248.52	-7,559.27	-167.19	14,552,632.70	1,742,842.73	40.0705454	-104.6338826	7,560.08	2.72	-0.92	2.56
13,608.00	91.37	180.97	7,247.10	-7,648.23	-169.16	14,552,543.73	1,742,841.13	40.0703011	-104.6338896	7,649.06	1.23	1.03	-0.66
13,698.00	89.59	181.99	7,246.35	-7,738.19	-171.48	14,552,453.76	1,742,839.18	40.0700540	-104.6338979	7,739.03	2.28	-1.98	1.13
13,787.00	88.93	179.57	7,247.50	-7,827.17	-172.69	14,552,364.77	1,742,838.33	40.0698097	-104.6339022	7,828.01	2.82	-0.74	-2.72
13,877.00	89.84	180.55	7,248.46	-7,917.16	-172.79	14,552,274.78	1,742,838.61	40.0695625	-104.6339025	7,918.00	1.49	1.01	1.09
13,967.00	90.04	180.18	7,248.56	-8,007.16	-173.36	14,552,184.78	1,742,838.41	40.0693154	-104.6339046	8,008.00	0.47	0.22	-0.41
14,056.00	90.24	179.40	7,248.34	-8,096.16	-173.03	14,552,095.79	1,742,839.10	40.0690710	-104.6339034	8,097.00	0.90	0.22	-0.88
14,146.00	89.95	180.50	7,248.19	-8,186.16	-172.95	14,552,005.79	1,742,839.55	40.0688238	-104.6339031	8,187.00	1.26	-0.32	1.22
14,236.00	90.42	179.24	7,247.90	-8,276.16	-172.75	14,551,915.79	1,742,840.12	40.0685767	-104.6339024	8,276.99	1.49	0.52	-1.40
14,326.00	90.18	180.46	7,247.43	-8,366.15	-172.52	14,551,825.80	1,742,840.73	40.0683296	-104.6339016	8,366.98	1.38	-0.27	1.36
14,415.00	90.76	179.60	7,246.70	-8,455.15	-172.56	14,551,736.80	1,742,841.05	40.0680852	-104.6339017	8,455.98	1.17	0.65	-0.97
14,505.00	88.90	179.31	7,246.97	-8,545.14	-171.71	14,551,646.82	1,742,842.28	40.0678380	-104.6338987	8,545.96	2.09	-2.07	-0.32
14,595.00	89.86	178.68	7,247.94	-8,635.12	-170.13	14,551,556.84	1,742,844.23	40.0675909	-104.6338930	8,635.93	1.28	1.07	-0.70
14,684.00	90.39	181.79	7,247.75	-8,724.11	-170.49	14,551,467.86	1,742,844.23	40.0673466	-104.6338943	8,724.92	3.54	0.60	3.49
14,774.00	89.82	180.26	7,247.58	-8,814.09	-172.10	14,551,377.87	1,742,842.99	40.0670995	-104.6339001	8,814.91	1.81	-0.63	-1.70
14,864.00	89.89	180.32	7,247.81	-8,904.09	-172.56	14,551,287.87	1,742,842.90	40.0668523	-104.6339017	8,904.91	0.10	0.08	0.07
14,953.00	92.33	180.56	7,246.09	-8,993.06	-173.24	14,551,198.89	1,742,842.59	40.0666080	-104.6339041	8,993.89	2.75	2.74	0.27
15,043.00	87.64	180.73	7,246.11	-9,083.03	-174.25	14,551,108.92	1,742,841.95	40.0663609	-104.6339078	9,083.86	5.21	-5.21	0.19
15,133.00	88.99	180.16	7,248.76	-9,172.99	-174.95	14,551,018.96	1,742,841.62	40.0661139	-104.6339102	9,173.82	1.63	1.50	-0.63
15,222.00	89.67	180.02	7,249.80	-9,261.98	-175.09	14,550,929.97	1,742,841.85	40.0658695	-104.6339107	9,262.81	0.78	0.76	-0.16
15,312.00	91.03	180.19	7,249.25	-9,351.98	-175.26	14,550,839.97	1,742,842.05	40.0656224	-104.6339113	9,352.81	1.52	1.51	0.19
15,402.00	89.01	180.59	7,249.21	-9,441.97	-175.87	14,550,749.98	1,742,841.81	40.0653752	-104.6339135	9,442.80	2.29	-2.24	0.44
15,491.00	90.05	180.98	7,249.94	-9,530.96	-177.09	14,550,660.99	1,742,840.96	40.0651309	-104.6339179	9,531.80	1.25	1.17	0.44
15,581.00	90.35	180.27	7,249.63	-9,620.95	-178.07	14,550,570.99	1,742,840.35	40.0648837	-104.6339214	9,621.79	0.86	0.33	-0.79
15,670.00	90.32	179.72	7,249.11	-9,709.95	-178.06	14,550,481.99	1,742,840.72	40.0646393	-104.6339213	9,710.79	0.62	-0.03	-0.62
15,760.00	91.01	179.34	7,248.07	-9,799.94	-177.32	14,550,392.01	1,742,841.83	40.0643922	-104.6339187	9,800.78	0.88	0.77	-0.42
15,849.00	88.54	180.86	7,248.42	-9,888.93	-177.48	14,550,303.02	1,742,842.04	40.0641478	-104.6339193	9,889.76	3.26	-2.78	1.71
15,939.00	89.69	181.17	7,249.81	-9,978.90	-179.07	14,550,213.04	1,742,840.82	40.0639007	-104.6339249	9,979.75	1.32	1.28	0.34
16,029.00	89.23	179.26	7,250.65	-10,068.89	-179.41	14,550,123.04	1,742,840.85	40.0636536	-104.6339262	10,069.74	2.18	-0.51	-2.12
16,118.00	89.11	177.42	7,251.94	-10,157.84	-176.83	14,550,034.11	1,742,843.80	40.0634093	-104.6339169	10,158.67	2.07	-0.13	-2.07
16,208.00	89.89	180.58	7,252.73	-10,247.81	-175.26	14,549,944.14	1,742,845.74	40.0631623	-104.6339113	10,248.63	3.62	0.87	3.51
16,297.00	90.40	180.34	7,252.50	-10,336.81	-175.98	14,549,855.14	1,742,845.39	40.0629179	-104.6339139	10,337.63	0.63	0.57	-0.27
16,387.00	91.29	180.31	7,251.18	-10,426.80	-176.49	14,549,765.16	1,742,845.25	40.0626708	-104.6339157	10,427.62	0.99	0.99	-0.03
16,477.00	90.18	181.54	7,250.02	-10,516.77	-177.94	14,549,675.17	1,742,844.17	40.0624237	-104.6339209	10,517.60	1.84	-1.23	1.37
16,566.00	91.16	181.27	7,248.98	-10,605.74	-180.12	14,549,586.20	1,742,842.35	40.0621794	-104.6339287	10,606.58	1.14	1.10	-0.30

Survey Report

Company:	Occidental Petroleum	Local Co-ordinate Reference:	Well Labrisa 35-4HZ
Project:	Weld County, CO (UTM-NAD83)	TVD Reference:	4970' GL + 26' KB @ 4996.00usft
Site:	2N-65W-35 (Labrisa Pad)	MD Reference:	4970' GL + 26' KB @ 4996.00usft
Well:	Labrisa 35-4HZ	North Reference:	True
Wellbore:	OH	Survey Calculation Method:	Minimum Curvature
Design:	OH	Database:	.Total Directional Production DB

Survey

Measured Depth (usft)	INC (°)	AZI (°)	Vertical Depth (usft)	Local Coordinates		Map Coordinates		Geo Coordinates		Vertical Section (usft)	Dogleg Rate (°/100usft)	Build Rate (°/100usft)	Turn Rate (°/100usft)
				+N/-S (usft)	+E/-W (usft)	Northing (usft)	Easting (usft)	Latitude (°)	Longitude (°)				
16,656.00	89.71	182.39	7,248.30	-10,695.69	-183.00	14,549,496.24	1,742,839.85	40.0619323	-104.6339389	10,696.54	2.04	-1.61	1.24
16,746.00	89.42	179.47	7,248.98	-10,785.66	-184.46	14,549,406.26	1,742,838.76	40.0616853	-104.6339442	10,786.53	3.26	-0.32	-3.24
16,835.00	88.83	176.74	7,250.34	-10,874.60	-181.52	14,549,317.34	1,742,842.07	40.0614410	-104.6339336	10,875.44	3.14	-0.66	-3.07
16,925.00	88.40	179.17	7,252.52	-10,964.51	-178.31	14,549,227.44	1,742,845.65	40.0611941	-104.6339222	10,965.33	2.74	-0.48	2.70
17,014.00	88.31	177.81	7,255.07	-11,053.44	-175.96	14,549,138.52	1,742,848.36	40.0609499	-104.6339138	11,054.25	1.53	-0.10	-1.53
17,104.00	88.25	179.01	7,257.77	-11,143.36	-173.46	14,549,048.61	1,742,851.23	40.0607030	-104.6339049	11,144.15	1.33	-0.07	1.33
17,194.00	90.49	180.54	7,258.76	-11,233.34	-173.11	14,548,958.63	1,742,851.95	40.0604559	-104.6339036	11,234.14	3.01	2.49	1.70
17,283.00	91.44	180.37	7,257.26	-11,322.33	-173.82	14,548,869.64	1,742,851.61	40.0602115	-104.6339061	11,323.12	1.08	1.07	-0.19
17,373.00	89.85	181.76	7,256.25	-11,412.30	-175.49	14,548,779.66	1,742,850.31	40.0599644	-104.6339121	11,413.10	2.35	-1.77	1.54
17,450.00	90.64	181.43	7,255.92	-11,489.27	-177.63	14,548,702.69	1,742,848.48	40.0597531	-104.6339198	11,490.08	1.11	1.03	-0.43
Last Survey 17450.00 'MD													
17,505.00	90.64	181.43	7,255.31	-11,544.25	-179.01	14,548,647.70	1,742,847.34	40.0596021	-104.6339247	11,545.07	0.00	0.00	0.00
BHL - PTB 17505.00 'MD (316' FSL - 1836' FWL) Sec 11													

Design Annotations

Measured Depth (usft)	Vertical Depth (usft)	Local Coordinates		Comment
		+N/-S (usft)	+E/-W (usft)	
100.00	100.00	0.07	0.03	1387' FSL & 1989' FWL Sec 35
7,326.84	7,101.82	-1,386.86	-119.61	Cross Section Line 7326.84 'MD (0' FNL - 1859' FWL) Sec 02
7,522.14	7,175.70	-1,566.92	-116.43	Cross Hardline 7522.14 'MD (180' FNL - 1863' FWL) Sec 02
12,549.60	7,253.97	-6,590.08	-166.03	Cross Section Line 12549.60 'MD (0' FNL - 1850' FWL) Sec 11
17,450.00	7,255.92	-11,489.27	-177.63	Last Survey 17450.00 'MD
17,505.00	7,255.31	-11,544.25	-179.01	BHL - PTB 17505.00 'MD (316' FSL - 1836' FWL) Sec 11

Checked By: _____ Approved By: _____ Date: _____