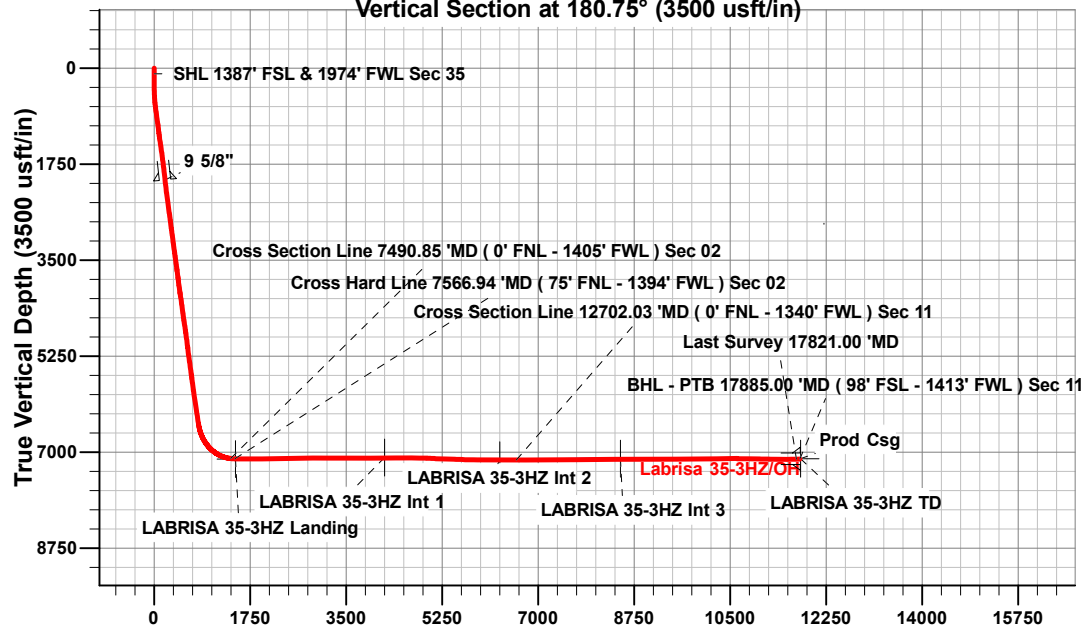


Vertical Section at 180.75° (3500 usft/in)



ANNOTATIONS

MD	Inc	Azi	TVD	+N/-S	+E/-W	V	Sect	Departure	Annotation
100.00	0.09	120.07	100.00	-0.08	0.07	0.08	0.12		SHL 1387' FSL & 1974' FWL Sec 35
7490.85	84.07	189.70	7115.20	-1388.58	-558.24	1395.77	1520.81		Cross Section Line 7490.85 'MD (0' FNL - 1405' FWL) Sec 02
7566.94	87.83	187.78	7119.87	-1463.63	-569.75	1470.96	1596.61		Cross Hard Line 7566.94 'MD (75' FNL - 1394' FWL) Sec 02
12702.03	89.46	180.76	7143.56	-6590.73	-660.93	6598.82	6730.52		Cross Section Line 12702.03 'MD (0' FNL - 1340' FWL) Sec 11
17821.00	91.86	168.58	7127.10	-11699.89	-597.94	11706.72	11848.76		Last Survey 17821.00 'MD
17885.00	91.86	168.58	7125.03	-11762.59	-585.28	11769.25	11912.73		BHL - PTB 17885.00 'MD (98' FSL - 1413' FWL) Sec 11

Project: Weld County, CO (UTM-NAD83)
 Site: 2N-65W-35 (Labrisa Pad)
 Well: Labrisa 35-3HZ
 Wellbore: OH
 Design: OH

FORMATION TOP DETAILS

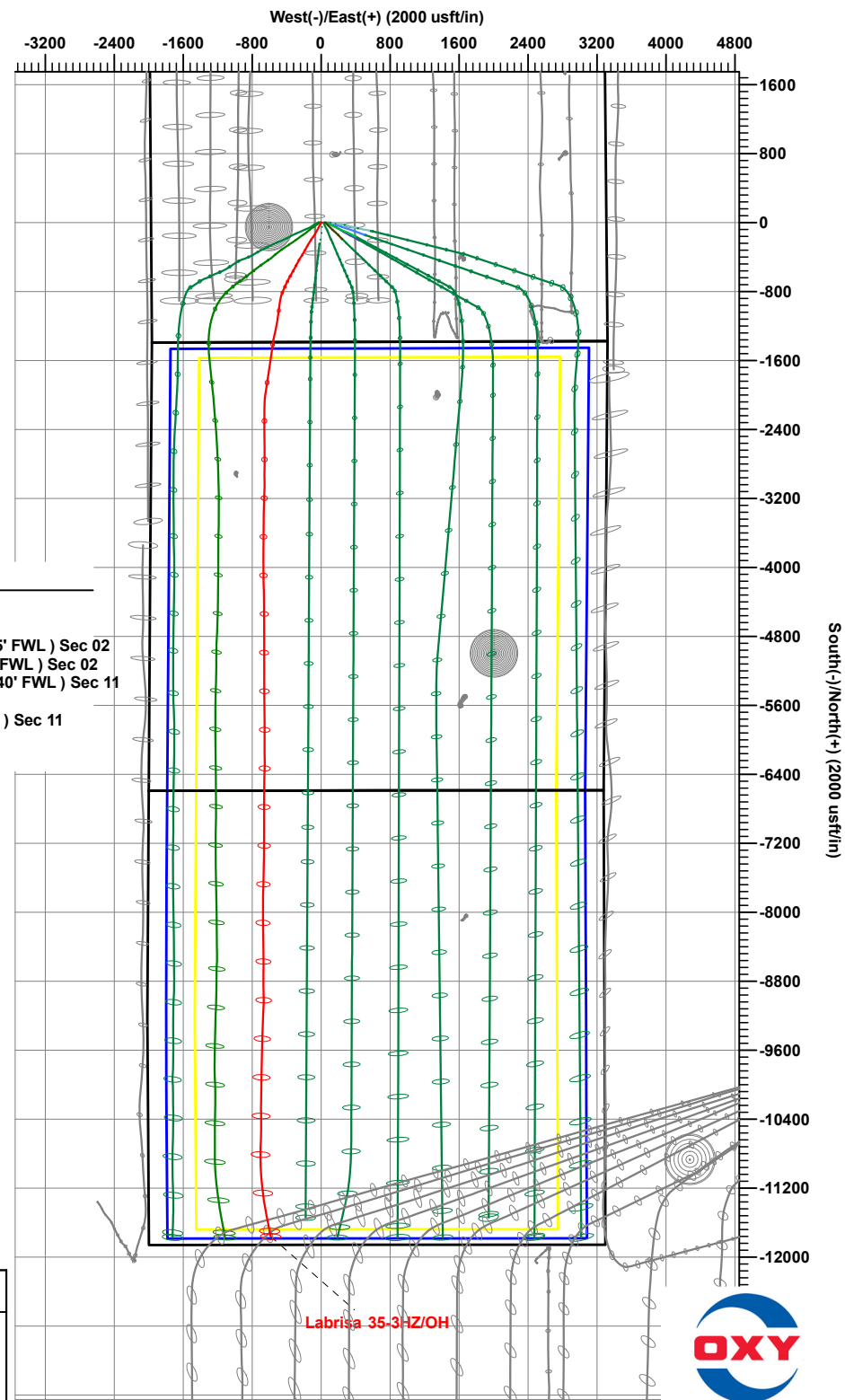
CASING DETAILS

TVD	MD	Name	Size
2036.00	2052.43	9 5/8"	9-5/8
7119.02	17888.53	Prod Csg	5-1/2

TVDPATH	MDPATH	Formation
4032.00	4071.51	PKMN
4389.00	4432.71	SSSX
6897.00	7014.36	SSPG
6921.00	7047.86	NBRR
7013.00	7195.88	N470_B_CK
7082.00	7351.40	N700_C_CK

DESIGN TARGET DETAILS

Name	TVD	+N/-S	+E/-W	Northing	Easting	Latitude	Longitude
LABRISA 35-3HZ Int 1	7098.00	-4191.76	-657.09	14555998.09	1742323.85	40.0797929	-104.6356880
LABRISA 35-3HZ Int 2	7147.00	-6291.75	-671.38	14553898.06	1742318.21	40.0740261	-104.6357389
LABRISA 35-3HZ Int 3	7119.00	-8491.74	-686.36	14551698.03	1742312.30	40.0679846	-104.6357922
LABRISA 35-3HZ Landing	7126.00	-1475.17	-573.38	14558715.01	1742396.36	40.0872530	-104.6353890
LABRISA 35-3HZ TD	7119.00	-11775.86	-708.23	14548413.85	1742303.97	40.0589660	-104.6358700



Occidental Petroleum

Weld County, CO (UTM-NAD83)

2N-65W-35 (Labrisa Pad)

Labrisa 35-3HZ

OH

OH



Standard Survey Report

16 February, 2024

Total Report Version 1.60

COMPASS 5000.16 Build 97

Survey Report

Company:	Occidental Petroleum	Local Co-ordinate Reference:	Well Labrisa 35-3HZ
Project:	Weld County, CO (UTM-NAD83)	TVD Reference:	4970' GL + 26' KB @ 4996.00usft
Site:	2N-65W-35 (Labrisa Pad)	MD Reference:	4970' GL + 26' KB @ 4996.00usft
Well:	Labrisa 35-3HZ	North Reference:	True
Wellbore:	OH	Survey Calculation Method:	Minimum Curvature
Design:	OH	Database:	.Total Directional Production DB

Project	Weld County, CO (UTM-NAD83)		
Map System:	Universal Transverse Mercator (US Survey Feet)	System Datum:	Ground Level
Geo Datum:	North American Datum 1983		
Map Zone:	Zone 13N (108 W to 102 W)		

Site	2N-65W-35 (Labrisa Pad)		
Site Position:		Northing:	14,560,192.78 usft
From:	Map	Easting:	1,742,933.63 usft
Position Uncertainty:	0.00 usft	Slot Radius:	13-3/16 "
		Latitude:	40.0913051
		Longitude:	-104.6334463

Well	Labrisa 35-3HZ		
Well Position	+N/-S	0.00 usft	Northing:
	+E/-W	0.00 usft	Easting:
Position Uncertainty	3.28 usft	Wellhead Elevation:	usft
Grid Convergence:	0.24 °		
		Latitude:	40.0913040
		Longitude:	-104.6333390
		Ground Level:	4,970.00 usft

Wellbore	OH		
Magnetics	Model Name	Sample Date	Declination
	HDGM2024	12/5/2024	(°)
			7.68
			Dip Angle (°)
			66.20
			Field Strength (nT)
			51,362.50000000

Design	OH		
Audit Notes:			
Version:	1.0	Phase:	ACTUAL
Vertical Section:	Depth From (TVD)	+N/-S	+E/-W
	(usft)	(usft)	(usft)
	0.00	0.00	0.00
			Direction
			(°)
			180.75

Survey Program	Date	2/16/2024		
From	To	Survey (Wellbore)	Tool Name	Description
(usft)	(usft)			
89.00	2,078.00	OH (OH)	APC_ISCWSA REV 2 MWD+ Fixed:v2:crustal field declination	
2,121.00	17,885.00	Survey #2 (OH)	MWD+IFR1+SAG+MS_Rev ! ISCWSA MWD + IFR1 + Sag Correction + Multi-Station	

Survey													
Measured Depth (usft)	INC (°)	AZI (°)	Vertical Depth (usft)	Local Coordinates +N/-S (usft)	+E/-W (usft)	Map Coordinates Northing (usft)	Easting (usft)	Geo Coordinates Latitude (°)	Longitude (°)	Vertical Section (usft)	Dogleg Rate (°/100usft)	Build Rate (°/100usft)	Turn Rate (°/100usft)
0.00	0.00	0.00	0.00	0.00	0.00	14,560,192.53	1,742,963.65	40.0913040	-104.6333390	0.00	0.00	0.00	0.00
89.00	0.11	141.01	89.00	-0.07	0.05	14,560,192.46	1,742,963.71	40.0913038	-104.6333388	0.07	0.12	0.12	0.00
100.00	0.09	120.07	100.00	-0.08	0.07	14,560,192.45	1,742,963.72	40.0913038	-104.6333387	0.08	0.38	-0.20	-190.35
SHL 1387' FSL & 1974' FWL Sec 35													
181.00	0.29	26.61	181.00	0.07	0.21	14,560,192.60	1,742,963.87	40.0913042	-104.6333382	-0.08	0.38	0.25	-115.38
272.00	0.58	340.72	272.00	0.71	0.16	14,560,193.24	1,742,963.82	40.0913060	-104.6333384	-0.72	0.47	0.32	-50.43

Survey Report

Company:	Occidental Petroleum	Local Co-ordinate Reference:	Well Labrisa 35-3HZ
Project:	Weld County, CO (UTM-NAD83)	TVD Reference:	4970' GL + 26' KB @ 4996.00usft
Site:	2N-65W-35 (Labrisa Pad)	MD Reference:	4970' GL + 26' KB @ 4996.00usft
Well:	Labrisa 35-3HZ	North Reference:	True
Wellbore:	OH	Survey Calculation Method:	Minimum Curvature
Design:	OH	Database:	.Total Directional Production DB

Survey													
Measured Depth (usft)	INC (°)	AZI (°)	Vertical Depth (usft)	Local Coordinates +N/-S (usft)	+E/-W (usft)	Map Coordinates Northing (usft)	Easting (usft)	Geo Coordinates Latitude (°)	Longituge (°)	Vertical Section (usft)	Dogleg Rate (°/100usft)	Build Rate (°/100usft)	Turn Rate (°/100usft)
363.00	1.53	213.78	362.99	0.14	-0.66	14,560,192.66	1,742,962.99	40.0913044	-104.6333413	-0.13	2.13	1.04	-139.49
452.00	3.43	222.73	451.90	-2.80	-3.13	14,560,189.71	1,742,960.54	40.0912963	-104.6333502	2.85	2.17	2.13	10.06
542.00	3.84	217.12	541.72	-7.19	-6.78	14,560,185.31	1,742,956.91	40.0912843	-104.6333632	7.27	0.60	0.46	-6.23
631.00	5.93	200.75	630.40	-13.86	-10.20	14,560,178.62	1,742,953.51	40.0912660	-104.6333755	13.99	2.80	2.35	-18.39
721.00	7.97	201.87	719.73	-24.00	-14.18	14,560,168.47	1,742,949.58	40.0912381	-104.6333897	24.18	2.27	2.27	1.24
810.00	8.83	207.16	807.77	-35.81	-19.59	14,560,156.64	1,742,944.21	40.0912057	-104.6334090	36.06	1.30	0.97	5.94
900.00	8.84	204.69	896.71	-48.23	-25.63	14,560,144.19	1,742,938.22	40.0911716	-104.6334306	48.57	0.42	0.01	-2.74
989.00	9.01	203.48	984.63	-60.84	-31.27	14,560,131.56	1,742,932.64	40.0911370	-104.6334508	61.24	0.28	0.19	-1.36
1,079.00	8.21	210.88	1,073.62	-72.82	-37.37	14,560,119.56	1,742,926.58	40.0911041	-104.6334726	73.30	1.52	-0.89	8.22
1,168.00	7.32	210.87	1,161.80	-83.14	-43.54	14,560,109.21	1,742,920.45	40.0910757	-104.6334947	83.70	1.00	-1.00	-0.01
1,258.00	9.77	205.99	1,250.80	-94.93	-49.83	14,560,097.40	1,742,914.21	40.0910434	-104.6335172	95.57	2.84	2.72	-5.42
1,347.00	9.67	207.98	1,338.52	-108.32	-56.65	14,560,083.98	1,742,907.45	40.0910066	-104.6335415	109.05	0.39	-0.11	2.24
1,437.00	9.02	213.12	1,427.33	-120.90	-64.05	14,560,071.36	1,742,900.10	40.0909720	-104.6335680	121.73	1.17	-0.72	5.71
1,526.00	9.34	209.28	1,515.19	-133.04	-71.40	14,560,059.19	1,742,892.81	40.0909387	-104.6335942	133.97	0.78	0.36	-4.31
1,616.00	8.47	211.55	1,604.10	-145.06	-78.44	14,560,047.14	1,742,885.82	40.0909057	-104.6336194	146.08	1.04	-0.97	2.52
1,705.00	8.83	212.52	1,692.09	-156.41	-85.54	14,560,035.77	1,742,878.76	40.0908745	-104.6336448	157.51	0.44	0.40	1.09
1,795.00	8.53	216.69	1,781.06	-167.58	-93.24	14,560,024.56	1,742,871.11	40.0908438	-104.6336724	168.79	0.77	-0.33	4.63
1,884.00	7.78	216.84	1,869.16	-177.70	-100.79	14,560,014.42	1,742,863.59	40.0908161	-104.6336994	179.00	0.84	-0.84	0.17
1,974.00	8.07	215.56	1,958.30	-187.71	-108.12	14,560,004.37	1,742,856.31	40.0907885	-104.6337256	189.11	0.38	0.32	-1.42
2,063.00	7.44	212.96	2,046.48	-197.63	-114.89	14,559,994.43	1,742,849.58	40.0907613	-104.6337498	199.12	0.81	-0.71	-2.92
2,078.00	7.43	212.08	2,061.36	-199.27	-115.93	14,559,992.79	1,742,848.54	40.0907568	-104.6337535	200.77	0.76	-0.07	-5.87
2,121.00	7.88	213.52	2,103.97	-204.08	-119.04	14,559,987.96	1,742,845.46	40.0907436	-104.6337646	205.62	1.14	1.05	3.35
2,210.00	7.44	212.01	2,192.18	-214.05	-125.46	14,559,977.96	1,742,839.08	40.0907162	-104.6337876	215.68	0.54	-0.49	-1.70
2,300.00	8.53	213.03	2,281.31	-224.59	-132.19	14,559,967.40	1,742,832.39	40.0906873	-104.6338116	226.30	1.22	1.21	1.13
2,390.00	9.48	210.39	2,370.20	-236.58	-139.58	14,559,955.38	1,742,825.06	40.0906544	-104.6338380	238.39	1.15	1.06	-2.93
2,479.00	8.71	211.14	2,458.08	-248.67	-146.77	14,559,943.26	1,742,817.91	40.0906212	-104.6338637	250.57	0.88	-0.87	0.84
2,569.00	8.51	210.72	2,547.06	-260.23	-153.69	14,559,931.67	1,742,811.03	40.0905894	-104.6338885	262.22	0.23	-0.22	-0.47
2,658.00	9.73	209.01	2,634.94	-272.47	-160.71	14,559,919.40	1,742,804.07	40.0905558	-104.6339136	274.55	1.40	1.37	-1.92
2,748.00	8.49	207.42	2,723.80	-285.01	-167.45	14,559,906.83	1,742,797.38	40.0905213	-104.6339377	287.18	1.41	-1.38	-1.77
2,837.00	7.52	208.23	2,811.93	-295.98	-173.23	14,559,895.84	1,742,791.64	40.0904912	-104.6339584	298.22	1.10	-1.09	0.91
2,927.00	8.64	210.45	2,901.04	-306.99	-179.45	14,559,884.80	1,742,785.48	40.0904610	-104.6339806	309.32	1.29	1.24	2.47
3,016.00	9.82	210.89	2,988.88	-319.27	-186.73	14,559,872.49	1,742,778.24	40.0904273	-104.6340066	321.69	1.33	1.33	0.49
3,105.00	8.88	210.21	3,076.70	-331.72	-194.08	14,559,860.01	1,742,770.94	40.0903931	-104.6340329	334.23	1.06	-1.06	-0.76
3,195.00	7.71	211.73	3,165.76	-342.86	-200.75	14,559,848.84	1,742,764.32	40.0903625	-104.6340568	345.46	1.32	-1.30	1.69
3,285.00	8.92	208.01	3,254.81	-354.15	-207.21	14,559,837.52	1,742,757.91	40.0903315	-104.6340798	356.84	1.47	1.34	-4.13
3,374.00	9.65	210.30	3,342.64	-366.69	-214.21	14,559,824.96	1,742,750.96	40.0902971	-104.6341049	369.46	0.92	0.82	2.57
3,464.00	8.23	209.24	3,431.55	-378.82	-221.16	14,559,812.80	1,742,744.05	40.0902637	-104.6341297	381.68	1.59	-1.58	-1.18
3,553.00	8.96	212.66	3,519.55	-390.21	-228.01	14,559,801.38	1,742,737.25	40.0902325	-104.6341542	393.17	1.00	0.82	3.84

Survey Report

Company:	Occidental Petroleum	Local Co-ordinate Reference:	Well Labrisa 35-3HZ
Project:	Weld County, CO (UTM-NAD83)	TVD Reference:	4970' GL + 26' KB @ 4996.00usft
Site:	2N-65W-35 (Labrisa Pad)	MD Reference:	4970' GL + 26' KB @ 4996.00usft
Well:	Labrisa 35-3HZ	North Reference:	True
Wellbore:	OH	Survey Calculation Method:	Minimum Curvature
Design:	OH	Database:	.Total Directional Production DB

Survey													
Measured Depth (usft)	INC (°)	AZI (°)	Vertical Depth (usft)	Local Coordinates +N/-S (usft)	+E/-W (usft)	Map Coordinates Northing (usft)	Easting (usft)	Geo Coordinates Latitude (°)	Longituge (°)	Vertical Section (usft)	Dogleg Rate (°/100usft)	Build Rate (°/100usft)	Turn Rate (°/100usft)
3,643.00	10.30	213.35	3,608.28	-402.84	-236.22	14,559,788.72	1,742,729.10	40.0901978	-104.6341836	405.89	1.49	1.49	0.77
3,733.00	8.56	216.23	3,697.06	-414.96	-244.60	14,559,776.56	1,742,720.76	40.0901645	-104.6342135	418.13	2.00	-1.93	3.20
3,822.00	9.16	209.77	3,785.00	-426.45	-252.04	14,559,765.04	1,742,713.38	40.0901329	-104.6342401	429.72	1.30	0.67	-7.26
3,912.00	7.03	211.18	3,874.10	-437.39	-258.44	14,559,754.08	1,742,707.01	40.0901029	-104.6342630	440.73	2.38	-2.37	1.57
4,001.00	9.26	204.68	3,962.19	-448.55	-264.25	14,559,742.89	1,742,701.25	40.0900722	-104.6342838	451.97	2.71	2.51	-7.30
4,091.00	8.19	206.02	4,051.15	-460.89	-270.09	14,559,730.52	1,742,695.47	40.0900384	-104.6343047	464.39	1.21	-1.19	1.49
4,181.00	10.27	208.87	4,139.98	-473.68	-276.78	14,559,717.71	1,742,688.83	40.0900032	-104.6343286	477.26	2.37	2.31	3.17
4,270.00	9.87	209.27	4,227.61	-487.28	-284.34	14,559,704.08	1,742,681.33	40.0899659	-104.6343556	490.96	0.46	-0.45	0.45
4,359.00	8.82	210.53	4,315.43	-499.82	-291.53	14,559,691.52	1,742,674.18	40.0899315	-104.6343813	503.59	1.20	-1.18	1.42
4,449.00	8.27	210.64	4,404.43	-511.33	-298.34	14,559,679.97	1,742,667.43	40.0898999	-104.6344057	515.19	0.61	-0.61	0.12
4,538.00	9.33	206.99	4,492.38	-523.26	-304.87	14,559,668.01	1,742,660.94	40.0898671	-104.6344290	527.21	1.35	1.19	-4.10
4,628.00	8.72	208.46	4,581.27	-535.76	-311.44	14,559,655.49	1,742,654.43	40.0898328	-104.6344525	539.79	0.72	-0.68	1.63
4,718.00	10.17	207.78	4,670.04	-548.79	-318.39	14,559,642.43	1,742,647.53	40.0897970	-104.6344774	552.91	1.62	1.61	-0.76
4,807.00	9.60	208.63	4,757.72	-562.26	-325.61	14,559,628.93	1,742,640.37	40.0897600	-104.6345032	566.47	0.66	-0.64	0.96
4,897.00	8.25	209.14	4,846.63	-574.48	-332.35	14,559,616.68	1,742,633.68	40.0897264	-104.6345273	578.79	1.50	-1.50	0.57
5,008.00	8.39	211.94	4,956.46	-588.31	-340.51	14,559,602.82	1,742,625.57	40.0896885	-104.6345564	592.72	0.39	0.13	2.52
5,098.00	9.17	209.68	5,045.41	-600.11	-347.54	14,559,590.99	1,742,618.59	40.0896560	-104.6345816	604.61	0.95	0.87	-2.51
5,188.00	7.89	209.04	5,134.41	-611.75	-354.09	14,559,579.33	1,742,612.09	40.0896241	-104.6346050	616.33	1.43	-1.42	-0.71
5,277.00	8.05	210.14	5,222.55	-622.48	-360.18	14,559,568.57	1,742,606.04	40.0895946	-104.6346268	627.14	0.25	0.18	1.24
5,367.00	9.45	208.42	5,311.50	-634.42	-366.86	14,559,556.60	1,742,599.41	40.0895618	-104.6346507	639.17	1.58	1.56	-1.91
5,456.00	8.58	206.28	5,399.40	-646.80	-373.28	14,559,544.19	1,742,593.05	40.0895278	-104.6346736	651.63	1.05	-0.98	-2.40
5,546.00	8.84	208.93	5,488.36	-658.88	-379.60	14,559,532.09	1,742,586.78	40.0894947	-104.6346962	663.79	0.53	0.29	2.94
5,636.00	8.24	199.62	5,577.37	-671.00	-385.11	14,559,519.94	1,742,581.32	40.0894614	-104.6347159	675.99	1.67	-0.67	-10.34
5,725.00	8.75	210.44	5,665.40	-682.85	-390.68	14,559,508.08	1,742,575.79	40.0894288	-104.6347358	687.90	1.88	0.57	12.16
5,815.00	8.44	206.41	5,754.39	-694.67	-397.08	14,559,496.23	1,742,569.44	40.0893964	-104.6347587	699.80	0.75	-0.34	-4.48
5,905.00	8.52	209.45	5,843.41	-706.39	-403.30	14,559,484.48	1,742,563.27	40.0893642	-104.6347809	711.61	0.51	0.09	3.38
5,994.00	9.13	204.13	5,931.35	-718.57	-409.43	14,559,472.27	1,742,557.19	40.0893307	-104.6348028	723.87	1.14	0.69	-5.98
6,084.00	9.39	205.78	6,020.18	-731.70	-415.54	14,559,459.12	1,742,551.13	40.0892947	-104.6348247	737.08	0.41	0.29	1.83
6,173.00	9.64	203.40	6,107.96	-745.08	-421.66	14,559,445.72	1,742,545.07	40.0892580	-104.6348466	750.53	0.52	0.28	-2.67
6,263.00	9.19	202.82	6,196.74	-758.62	-427.44	14,559,432.16	1,742,539.35	40.0892208	-104.6348672	764.15	0.51	-0.50	-0.64
6,353.00	9.06	202.23	6,285.60	-771.80	-432.91	14,559,418.95	1,742,533.93	40.0891846	-104.6348868	777.40	0.18	-0.14	-0.66
6,442.00	9.21	203.83	6,373.48	-784.80	-438.43	14,559,405.92	1,742,528.46	40.0891489	-104.6349066	790.47	0.33	0.17	1.80
6,532.00	9.52	204.51	6,462.28	-798.16	-444.43	14,559,392.54	1,742,522.52	40.0891122	-104.6349280	803.91	0.37	0.34	0.76
6,621.00	13.04	200.84	6,549.54	-814.25	-451.06	14,559,376.43	1,742,515.95	40.0890680	-104.6349517	820.08	4.03	3.96	-4.12
6,711.00	18.80	200.18	6,636.06	-837.37	-459.68	14,559,353.27	1,742,507.43	40.0890045	-104.6349825	843.31	6.40	6.40	-0.73
6,801.00	24.88	192.59	6,719.57	-869.49	-468.82	14,559,321.11	1,742,498.42	40.0889163	-104.6350152	875.56	7.44	6.76	-8.43
6,890.00	31.36	189.92	6,798.03	-910.62	-476.90	14,559,279.95	1,742,490.51	40.0888033	-104.6350441	916.79	7.42	7.28	-3.00

Survey Report

Company:	Occidental Petroleum	Local Co-ordinate Reference:	Well Labrisa 35-3HZ
Project:	Weld County, CO (UTM-NAD83)	TVD Reference:	4970' GL + 26' KB @ 4996.00usft
Site:	2N-65W-35 (Labrisa Pad)	MD Reference:	4970' GL + 26' KB @ 4996.00usft
Well:	Labrisa 35-3HZ	North Reference:	True
Wellbore:	OH	Survey Calculation Method:	Minimum Curvature
Design:	OH	Database:	.Total Directional Production DB

Survey													
Measured Depth (usft)	INC (°)	AZI (°)	Vertical Depth (usft)	Local Coordinates +N/-S (usft)	+E/-W (usft)	Map Coordinates Northing (usft)	Easting (usft)	Geo Coordinates Latitude (°)	Longitude (°)	Vertical Section (usft)	Dogleg Rate (°/100usft)	Build Rate (°/100usft)	Turn Rate (°/100usft)
6,980.00	38.52	187.82	6,871.76	-961.53	-484.76	14,559,229.01	1,742,482.86	40.0886636	-104.6350722	967.79	8.07	7.96	-2.33
7,069.00	45.69	186.39	6,937.75	-1,020.71	-492.08	14,559,169.80	1,742,475.78	40.0885010	-104.6350984	1,027.06	8.13	8.06	-1.61
7,159.00	53.52	188.63	6,996.03	-1,088.59	-501.11	14,559,101.88	1,742,467.03	40.0883146	-104.6351306	1,095.06	8.90	8.70	2.49
7,248.00	61.33	190.92	7,043.92	-1,162.42	-513.90	14,559,028.00	1,742,454.55	40.0881119	-104.6351763	1,169.05	9.04	8.78	2.57
7,338.00	69.83	191.38	7,081.09	-1,242.75	-529.74	14,558,947.61	1,742,439.04	40.0878913	-104.6352330	1,249.58	9.46	9.44	0.51
7,427.00	78.37	191.45	7,105.45	-1,326.57	-546.67	14,558,863.71	1,742,422.46	40.0876611	-104.6352935	1,333.62	9.60	9.60	0.08
7,490.85	84.07	189.70	7,115.20	-1,388.58	-558.24	14,558,801.66	1,742,411.14	40.0874908	-104.6353348	1,395.77	9.33	8.93	-2.74
Cross Section Line 7490.85 'MD (0' FNL - 1405' FWL) Sec 02													
7,517.00	86.41	189.00	7,117.36	-1,414.29	-562.47	14,558,775.93	1,742,407.02	40.0874202	-104.6353500	1,421.53	9.33	8.94	-2.69
7,566.94	87.83	187.78	7,119.87	-1,463.63	-569.75	14,558,726.56	1,742,399.95	40.0872847	-104.6353760	1,470.96	3.75	2.84	-2.45
Cross Hard Line 7566.94 'MD (75' FNL - 1394' FWL) Sec 02													
7,606.00	88.94	186.82	7,120.98	-1,502.36	-574.71	14,558,687.82	1,742,395.15	40.0871784	-104.6353937	1,509.75	3.75	2.84	-2.45
7,696.00	89.85	187.37	7,121.93	-1,591.66	-585.82	14,558,598.47	1,742,384.40	40.0869331	-104.6354334	1,599.19	1.18	1.01	0.61
7,786.00	90.13	189.08	7,121.94	-1,680.73	-598.70	14,558,509.34	1,742,371.89	40.0866885	-104.6354795	1,688.43	1.93	0.31	1.90
7,875.00	89.55	189.33	7,122.19	-1,768.59	-612.93	14,558,421.43	1,742,358.02	40.0864473	-104.6355304	1,776.46	0.71	-0.65	0.28
7,965.00	90.78	189.22	7,121.93	-1,857.41	-627.44	14,558,332.55	1,742,343.88	40.0862034	-104.6355822	1,865.46	1.37	1.37	-0.12
8,054.00	88.95	188.90	7,122.14	-1,945.29	-641.45	14,558,244.61	1,742,330.22	40.0859620	-104.6356323	1,953.52	2.09	-2.06	-0.36
8,143.00	89.96	185.50	7,122.99	-2,033.57	-652.60	14,558,156.28	1,742,319.44	40.0857196	-104.6356722	2,041.94	3.99	1.13	-3.82
8,233.00	91.43	182.45	7,121.90	-2,123.34	-658.84	14,558,066.49	1,742,313.57	40.0854731	-104.6356945	2,131.78	3.76	1.63	-3.39
8,322.00	91.51	179.64	7,119.61	-2,212.28	-660.46	14,557,977.54	1,742,312.31	40.0852288	-104.6357003	2,220.74	3.16	0.09	-3.16
8,412.00	92.14	179.19	7,116.75	-2,302.23	-659.55	14,557,887.60	1,742,313.60	40.0849818	-104.6356970	2,310.67	0.86	0.70	-0.50
8,501.00	92.96	178.97	7,112.79	-2,391.13	-658.12	14,557,798.70	1,742,315.40	40.0847377	-104.6356919	2,399.54	0.95	0.92	-0.25
8,591.00	89.69	178.98	7,110.70	-2,481.08	-656.51	14,557,708.76	1,742,317.38	40.0844907	-104.6356861	2,489.46	3.63	-3.63	0.01
8,681.00	92.83	181.25	7,108.73	-2,571.04	-656.69	14,557,618.80	1,742,317.57	40.0842436	-104.6356867	2,579.42	4.30	3.49	2.52
8,770.00	90.60	180.04	7,106.06	-2,659.99	-657.69	14,557,529.85	1,742,316.93	40.0839994	-104.6356903	2,668.37	2.85	-2.51	-1.36
8,860.00	89.50	180.41	7,105.98	-2,749.99	-658.04	14,557,439.85	1,742,316.95	40.0837522	-104.6356915	2,758.36	1.29	-1.22	0.41
8,950.00	89.98	179.82	7,106.39	-2,839.99	-658.22	14,557,349.85	1,742,317.14	40.0835051	-104.6356922	2,848.36	0.85	0.53	-0.66
9,039.00	88.88	179.71	7,107.28	-2,928.98	-657.86	14,557,260.86	1,742,317.87	40.0832607	-104.6356909	2,937.34	1.24	-1.24	-0.12
9,129.00	89.01	179.67	7,108.93	-3,018.96	-657.37	14,557,170.88	1,742,318.73	40.0830136	-104.6356891	3,027.31	0.15	0.14	-0.04
9,218.00	90.64	181.15	7,109.21	-3,107.95	-658.01	14,557,081.89	1,742,318.46	40.0827692	-104.6356914	3,116.30	2.47	1.83	1.66
9,308.00	91.12	182.29	7,107.82	-3,197.90	-660.71	14,556,991.93	1,742,316.13	40.0825222	-104.6357010	3,206.28	1.37	0.53	1.27
9,398.00	89.78	181.11	7,107.12	-3,287.86	-663.38	14,556,901.97	1,742,313.83	40.0822752	-104.6357106	3,296.26	1.98	-1.49	-1.31
9,487.00	89.83	181.54	7,107.42	-3,376.83	-665.44	14,556,812.98	1,742,312.14	40.0820308	-104.6357179	3,385.25	0.49	0.06	0.48
9,577.00	90.96	182.27	7,106.80	-3,466.78	-668.43	14,556,723.03	1,742,309.52	40.0817838	-104.6357286	3,475.23	1.49	1.26	0.81
9,666.00	88.33	179.55	7,107.35	-3,555.75	-669.84	14,556,634.05	1,742,308.47	40.0815395	-104.6357337	3,564.21	4.25	-2.96	-3.06
9,756.00	88.87	180.12	7,109.55	-3,645.72	-669.58	14,556,544.08	1,742,309.10	40.0812924	-104.6357327	3,654.17	0.87	0.60	0.63
9,845.00	89.11	180.24	7,111.12	-3,734.71	-669.86	14,556,455.09	1,742,309.19	40.0810481	-104.6357337	3,743.15	0.30	0.27	0.13
9,935.00	90.52	180.25	7,111.41	-3,824.70	-670.25	14,556,365.10	1,742,309.18	40.0808009	-104.6357351	3,833.15	1.57	1.57	0.01

Survey Report

Company:	Occidental Petroleum	Local Co-ordinate Reference:	Well Labrisa 35-3HZ
Project:	Weld County, CO (UTM-NAD83)	TVD Reference:	4970' GL + 26' KB @ 4996.00usft
Site:	2N-65W-35 (Labrisa Pad)	MD Reference:	4970' GL + 26' KB @ 4996.00usft
Well:	Labrisa 35-3HZ	North Reference:	True
Wellbore:	OH	Survey Calculation Method:	Minimum Curvature
Design:	OH	Database:	.Total Directional Production DB

Survey													
Measured Depth (usft)	INC (°)	AZI (°)	Vertical Depth (usft)	Local Coordinates +N/-S (usft)	Local Coordinates +E/-W (usft)	Map Coordinates Northing (usft)	Map Coordinates Easting (usft)	Geo Coordinates Latitude (°)	Geo Coordinates Longitude (°)	Vertical Section (usft)	Dogleg Rate (°/100usft)	Build Rate (°/100usft)	Turn Rate (°/100usft)
10,024.00	91.13	180.04	7,110.13	-3,913.69	-670.47	14,556,276.11	1,742,309.32	40.0805565	-104.6357359	3,922.13	0.72	0.69	-0.24
10,114.00	92.14	179.93	7,107.56	-4,003.65	-670.45	14,556,186.14	1,742,309.71	40.0803095	-104.6357358	4,012.09	1.13	1.12	-0.12
10,204.00	90.59	179.06	7,105.42	-4,093.62	-669.66	14,556,096.18	1,742,310.88	40.0800624	-104.6357329	4,102.04	1.97	-1.72	-0.97
10,293.00	90.70	178.49	7,104.41	-4,182.59	-667.75	14,556,007.22	1,742,313.14	40.0798181	-104.6357261	4,190.98	0.65	0.12	-0.64
10,383.00	89.63	178.80	7,104.16	-4,272.57	-665.63	14,555,917.25	1,742,315.64	40.0795710	-104.6357185	4,280.91	1.24	-1.19	0.34
10,472.00	89.04	178.58	7,105.19	-4,361.54	-663.59	14,555,828.29	1,742,318.04	40.0793267	-104.6357112	4,369.85	0.71	-0.66	-0.25
10,562.00	90.32	179.45	7,105.69	-4,451.52	-662.04	14,555,738.32	1,742,319.96	40.0790796	-104.6357057	4,459.81	1.72	1.42	0.97
10,651.00	90.97	178.95	7,104.69	-4,540.51	-660.80	14,555,649.34	1,742,321.57	40.0788352	-104.6357012	4,548.77	0.92	0.73	-0.56
10,741.00	90.22	180.48	7,103.75	-4,630.50	-660.35	14,555,559.35	1,742,322.39	40.0785881	-104.6356996	4,638.74	1.89	-0.83	1.70
10,831.00	88.57	179.90	7,104.70	-4,720.49	-660.65	14,555,469.36	1,742,322.46	40.0783410	-104.6357007	4,728.73	1.94	-1.83	-0.64
10,920.00	89.31	180.20	7,106.35	-4,809.47	-660.73	14,555,380.37	1,742,322.75	40.0780966	-104.6357010	4,817.71	0.90	0.83	0.34
11,010.00	89.01	180.67	7,107.67	-4,899.46	-661.41	14,555,290.38	1,742,322.44	40.0778495	-104.6357034	4,907.70	0.62	-0.33	0.52
11,100.00	86.92	180.27	7,110.87	-4,989.39	-662.15	14,555,200.45	1,742,322.07	40.0776025	-104.6357060	4,997.63	2.36	-2.32	-0.44
11,189.00	87.72	180.13	7,115.03	-5,078.30	-662.46	14,555,111.55	1,742,322.13	40.0773584	-104.6357071	5,086.53	0.91	0.90	-0.16
11,279.00	87.85	179.85	7,118.51	-5,168.23	-662.45	14,555,021.61	1,742,322.51	40.0771114	-104.6357070	5,176.46	0.34	0.14	-0.31
11,369.00	87.97	179.86	7,121.79	-5,258.17	-662.22	14,554,931.68	1,742,323.11	40.0768644	-104.6357062	5,266.39	0.13	0.13	0.01
11,458.00	87.98	178.44	7,124.93	-5,347.10	-660.90	14,554,842.75	1,742,324.80	40.0766202	-104.6357015	5,355.29	1.59	0.01	-1.60
11,548.00	87.39	177.61	7,128.57	-5,436.97	-657.80	14,554,752.89	1,742,328.27	40.0763734	-104.6356904	5,445.12	1.13	-0.66	-0.92
11,637.00	88.31	180.08	7,131.91	-5,525.88	-656.01	14,554,663.99	1,742,330.43	40.0761293	-104.6356840	5,534.00	2.96	1.03	2.78
11,727.00	88.58	179.79	7,134.35	-5,615.85	-655.91	14,554,574.02	1,742,330.90	40.0758822	-104.6356836	5,623.95	0.44	0.30	-0.32
11,816.00	89.11	179.92	7,136.14	-5,704.83	-655.68	14,554,485.04	1,742,331.49	40.0756379	-104.6356828	5,712.93	0.61	0.60	0.15
11,906.00	89.20	180.30	7,137.47	-5,794.82	-655.85	14,554,395.05	1,742,331.69	40.0753907	-104.6356834	5,802.91	0.43	0.10	0.42
11,996.00	88.85	180.13	7,139.00	-5,884.81	-656.19	14,554,305.07	1,742,331.72	40.0751436	-104.6356846	5,892.89	0.43	-0.39	-0.19
12,085.00	89.68	180.24	7,140.14	-5,973.80	-656.48	14,554,216.07	1,742,331.80	40.0748992	-104.6356856	5,981.88	0.94	0.93	0.12
12,175.00	89.95	179.74	7,140.44	-6,063.80	-656.46	14,554,126.08	1,742,332.19	40.0746521	-104.6356856	6,071.87	0.63	0.30	-0.56
12,264.00	89.75	179.76	7,140.67	-6,152.80	-656.07	14,554,037.08	1,742,332.94	40.0744077	-104.6356842	6,160.86	0.23	-0.22	0.02
12,354.00	90.91	179.33	7,140.15	-6,242.79	-655.36	14,553,947.09	1,742,334.03	40.0741605	-104.6356816	6,250.83	1.37	1.29	-0.48
12,444.00	89.53	180.93	7,139.80	-6,332.78	-655.56	14,553,857.10	1,742,334.20	40.0739134	-104.6356823	6,340.82	2.35	-1.53	1.78
12,533.00	88.95	181.54	7,140.98	-6,421.76	-657.48	14,553,768.12	1,742,332.65	40.0736691	-104.6356892	6,429.81	0.95	-0.65	0.69
12,623.00	89.07	181.16	7,142.54	-6,511.72	-659.60	14,553,678.15	1,742,330.90	40.0734220	-104.6356967	6,519.79	0.44	0.13	-0.42
12,702.03	89.46	180.76	7,143.56	-6,590.73	-660.93	14,553,599.13	1,742,329.89	40.0732051	-104.6357015	6,598.82	0.70	0.49	-0.50
Cross Section Line 12702.03 'MD (0' FNL - 1340' FWL) Sec 11													
12,713.00	89.51	180.71	7,143.66	-6,601.70	-661.07	14,553,588.16	1,742,329.80	40.0731749	-104.6357020	6,609.79	0.70	0.49	-0.50
12,803.00	90.11	180.51	7,143.95	-6,691.69	-662.03	14,553,498.16	1,742,329.21	40.0729278	-104.6357054	6,699.78	0.70	0.67	-0.22
12,892.00	90.72	180.37	7,143.31	-6,780.69	-662.71	14,553,409.17	1,742,328.89	40.0726834	-104.6357078	6,788.78	0.70	0.69	-0.16
12,982.00	91.97	180.02	7,141.20	-6,870.66	-663.02	14,553,319.19	1,742,328.96	40.0724363	-104.6357089	6,878.75	1.44	1.39	-0.39
13,071.00	90.09	179.35	7,139.60	-6,959.64	-662.53	14,553,230.22	1,742,329.81	40.0721920	-104.6357072	6,967.71	2.24	-2.11	-0.75
13,161.00	89.74	180.17	7,139.73	-7,049.64	-662.15	14,553,140.22	1,742,330.56	40.0719448	-104.6357058	7,057.70	0.99	-0.39	0.91

Survey Report

Company:	Occidental Petroleum	Local Co-ordinate Reference:	Well Labrisa 35-3HZ
Project:	Weld County, CO (UTM-NAD83)	TVD Reference:	4970' GL + 26' KB @ 4996.00usft
Site:	2N-65W-35 (Labrisa Pad)	MD Reference:	4970' GL + 26' KB @ 4996.00usft
Well:	Labrisa 35-3HZ	North Reference:	True
Wellbore:	OH	Survey Calculation Method:	Minimum Curvature
Design:	OH	Database:	.Total Directional Production DB

Survey													
Measured Depth (usft)	INC (°)	AZI (°)	Vertical Depth (usft)	Local Coordinates +N/-S (usft)	Local Coordinates +E/-W (usft)	Map Coordinates Northing (usft)	Map Coordinates Easting (usft)	Geo Coordinates Latitude (°)	Geo Coordinates Longitude (°)	Vertical Section (usft)	Dogleg Rate (°/100usft)	Build Rate (°/100usft)	Turn Rate (°/100usft)
13,251.00	90.45	179.82	7,139.58	-7,139.64	-662.14	14,553,050.22	1,742,330.94	40.0716977	-104.6357058	7,147.69	0.88	0.79	-0.39
13,340.00	92.23	179.53	7,137.50	-7,228.61	-661.64	14,552,961.26	1,742,331.81	40.0714534	-104.6357040	7,236.65	2.03	2.00	-0.33
13,429.00	90.92	181.73	7,135.05	-7,317.56	-662.62	14,552,872.30	1,742,331.20	40.0712091	-104.6357074	7,325.61	2.88	-1.47	2.47
13,519.00	89.46	181.15	7,134.75	-7,407.53	-664.88	14,552,782.32	1,742,329.31	40.0709620	-104.6357155	7,415.60	1.75	-1.62	-0.64
13,608.00	90.67	180.89	7,134.65	-7,496.51	-666.46	14,552,693.33	1,742,328.09	40.0707177	-104.6357212	7,504.59	1.39	1.36	-0.29
13,698.00	89.68	181.56	7,134.38	-7,586.49	-668.39	14,552,603.35	1,742,326.54	40.0704706	-104.6357280	7,594.59	1.33	-1.10	0.74
13,788.00	89.41	181.11	7,135.09	-7,676.46	-670.49	14,552,513.37	1,742,324.81	40.0702235	-104.6357355	7,684.58	0.58	-0.30	-0.50
13,877.00	90.58	180.54	7,135.10	-7,765.45	-671.77	14,552,424.37	1,742,323.90	40.0699791	-104.6357401	7,773.58	1.46	1.31	-0.64
13,967.00	91.28	180.08	7,133.64	-7,855.44	-672.25	14,552,334.39	1,742,323.78	40.0697320	-104.6357418	7,863.56	0.93	0.78	-0.51
14,057.00	89.45	180.87	7,133.07	-7,945.43	-673.00	14,552,244.39	1,742,323.41	40.0694849	-104.6357445	7,953.56	2.21	-2.03	0.88
14,146.00	90.16	181.27	7,133.37	-8,034.41	-674.66	14,552,155.40	1,742,322.11	40.0692405	-104.6357504	8,042.55	0.92	0.80	0.45
14,236.00	90.41	180.16	7,132.92	-8,124.40	-675.78	14,552,065.41	1,742,321.36	40.0689934	-104.6357544	8,132.55	1.26	0.28	-1.23
14,326.00	90.58	179.56	7,132.15	-8,214.40	-675.56	14,551,975.42	1,742,321.95	40.0687463	-104.6357536	8,222.54	0.69	0.19	-0.67
14,416.00	89.22	176.66	7,132.30	-8,304.34	-672.60	14,551,885.49	1,742,325.29	40.0684993	-104.6357430	8,312.43	3.56	-1.51	-3.22
14,505.00	89.58	179.20	7,133.23	-8,393.27	-669.38	14,551,796.57	1,742,328.87	40.0682551	-104.6357315	8,401.31	2.88	0.40	2.85
14,595.00	90.38	181.21	7,133.27	-8,483.26	-669.70	14,551,706.58	1,742,328.92	40.0680079	-104.6357327	8,491.30	2.40	0.89	2.23
14,684.00	90.16	180.20	7,132.85	-8,572.25	-670.80	14,551,617.58	1,742,328.19	40.0677636	-104.6357366	8,580.30	1.16	-0.25	-1.13
14,774.00	89.98	179.43	7,132.74	-8,662.25	-670.51	14,551,527.59	1,742,328.85	40.0675164	-104.6357355	8,670.28	0.88	-0.20	-0.86
14,864.00	90.28	179.90	7,132.53	-8,752.25	-669.98	14,551,437.59	1,742,329.75	40.0672693	-104.6357336	8,760.27	0.62	0.33	0.52
14,954.00	90.18	179.95	7,132.17	-8,842.25	-669.87	14,551,347.60	1,742,330.24	40.0670221	-104.6357332	8,850.26	0.12	-0.11	0.06
15,043.00	90.25	178.24	7,131.84	-8,931.23	-668.46	14,551,258.62	1,742,332.01	40.0667777	-104.6357282	8,939.22	1.92	0.08	-1.92
15,133.00	91.28	179.73	7,130.64	-9,021.21	-666.87	14,551,168.65	1,742,333.98	40.0665307	-104.6357225	9,029.16	2.01	1.14	1.66
15,222.00	91.33	182.69	7,128.61	-9,110.15	-668.74	14,551,079.70	1,742,332.46	40.0662864	-104.6357292	9,118.13	3.33	0.06	3.33
15,312.00	91.99	182.44	7,126.00	-9,200.02	-672.77	14,550,989.81	1,742,328.81	40.0660396	-104.6357435	9,208.04	0.78	0.73	-0.28
15,402.00	90.84	182.77	7,123.78	-9,289.90	-676.86	14,550,899.91	1,742,325.09	40.0657928	-104.6357581	9,297.97	1.33	-1.28	0.37
15,491.00	91.09	182.33	7,122.28	-9,378.80	-680.82	14,550,811.00	1,742,321.50	40.0655487	-104.6357723	9,386.91	0.57	0.28	-0.49
15,581.00	88.79	181.04	7,122.37	-9,468.75	-683.46	14,550,721.04	1,742,319.22	40.0653016	-104.6357817	9,476.89	2.93	-2.56	-1.43
15,670.00	88.30	181.13	7,124.63	-9,557.71	-685.15	14,550,632.08	1,742,317.90	40.0650574	-104.6357877	9,565.86	0.56	-0.55	0.10
15,760.00	88.50	180.76	7,127.15	-9,647.66	-686.63	14,550,542.12	1,742,316.79	40.0648103	-104.6357930	9,655.82	0.47	0.22	-0.41
15,850.00	90.18	181.41	7,128.18	-9,737.64	-688.34	14,550,452.14	1,742,315.46	40.0645633	-104.6357991	9,745.81	2.00	1.87	0.72
15,939.00	91.07	181.53	7,127.21	-9,826.60	-690.62	14,550,363.16	1,742,313.54	40.0643189	-104.6358073	9,834.80	1.01	1.00	0.13
16,029.00	91.69	181.40	7,125.04	-9,916.55	-692.92	14,550,273.21	1,742,311.61	40.0640719	-104.6358155	9,924.77	0.70	0.69	-0.14
16,118.00	92.53	181.17	7,121.77	-10,005.46	-694.92	14,550,184.29	1,742,309.98	40.0638278	-104.6358226	10,013.70	0.98	0.94	-0.26
16,208.00	91.04	180.54	7,118.96	-10,095.40	-696.26	14,550,094.34	1,742,309.01	40.0635808	-104.6358274	10,103.65	1.80	-1.66	-0.70
16,298.00	89.78	180.82	7,118.32	-10,185.39	-697.33	14,550,004.35	1,742,308.31	40.0633336	-104.6358312	10,193.65	1.43	-1.40	0.31
16,387.00	90.17	179.91	7,118.36	-10,274.39	-697.89	14,549,915.35	1,742,308.11	40.0630893	-104.6358332	10,282.65	1.11	0.44	-1.02
16,477.00	90.95	179.17	7,117.48	-10,364.38	-697.17	14,549,825.36	1,742,309.21	40.0628421	-104.6358306	10,372.62	1.19	0.87	-0.82

Survey Report

Company: Occidental Petroleum Project: Weld County, CO (UTM-NAD83) Site: 2N-65W-35 (Labrisa Pad) Well: Labrisa 35-3HZ Wellbore: OH Design: OH	Local Co-ordinate Reference: Well Labrisa 35-3HZ TVD Reference: 4970' GL + 26' KB @ 4996.00usft MD Reference: 4970' GL + 26' KB @ 4996.00usft North Reference: True Survey Calculation Method: Minimum Curvature Database: .Total Directional Production DB	
--	--	--

Survey

Measured Depth (usft)	INC (°)	AZI (°)	Vertical Depth (usft)	Local Coordinates		Map Coordinates		Geo Coordinates		Vertical Section (usft)	Dogleg Rate (°/100usft)	Build Rate (°/100usft)	Turn Rate (°/100usft)
				+N/-S (usft)	+E/-W (usft)	Northing (usft)	Easting (usft)	Latitude (°)	Longitude (°)				
16,566.00	89.98	180.32	7,116.76	-10,453.38	-696.77	14,549,736.37	1,742,309.97	40.0625977	-104.6358292	10,461.60	1.69	-1.09	1.29
16,656.00	90.91	180.45	7,116.06	-10,543.37	-697.38	14,549,646.37	1,742,309.74	40.0623506	-104.6358313	10,551.60	1.04	1.03	0.14
16,746.00	88.08	181.72	7,116.85	-10,633.34	-699.08	14,549,556.40	1,742,308.40	40.0621035	-104.6358374	10,641.58	3.45	-3.14	1.41
16,835.00	90.40	182.41	7,118.03	-10,722.27	-702.29	14,549,467.46	1,742,305.56	40.0618593	-104.6358489	10,730.54	2.72	2.61	0.78
16,925.00	88.46	179.32	7,118.93	-10,812.24	-703.65	14,549,377.48	1,742,304.58	40.0616123	-104.6358537	10,820.52	4.05	-2.16	-3.43
17,014.00	89.29	179.75	7,120.68	-10,901.22	-702.93	14,549,288.51	1,742,305.66	40.0613679	-104.6358511	10,909.48	1.05	0.93	0.48
17,104.00	88.37	177.07	7,122.51	-10,991.15	-700.43	14,549,198.58	1,742,308.53	40.0611209	-104.6358422	10,999.38	3.15	-1.02	-2.98
17,194.00	89.40	174.77	7,124.26	-11,080.90	-694.03	14,549,108.86	1,742,315.30	40.0608745	-104.6358193	11,089.04	2.80	1.14	-2.56
17,284.00	88.35	173.39	7,126.03	-11,170.40	-684.75	14,549,019.40	1,742,324.95	40.0606287	-104.6357861	11,178.41	1.93	-1.17	-1.53
17,373.00	88.80	174.74	7,128.25	-11,258.89	-675.55	14,548,930.94	1,742,334.52	40.0603857	-104.6357532	11,266.77	1.60	0.51	1.52
17,463.00	89.27	170.39	7,129.76	-11,348.10	-663.91	14,548,841.78	1,742,346.53	40.0601407	-104.6357116	11,355.82	4.86	0.52	-4.83
17,552.00	89.24	169.69	7,130.92	-11,435.75	-648.51	14,548,754.20	1,742,362.28	40.0599000	-104.6356566	11,443.26	0.79	-0.03	-0.79
17,642.00	90.17	169.30	7,131.38	-11,524.24	-632.11	14,548,665.78	1,742,379.05	40.0596570	-104.6355980	11,531.53	1.12	1.03	-0.43
17,731.00	91.72	169.05	7,129.91	-11,611.65	-615.39	14,548,578.45	1,742,396.12	40.0594170	-104.6355382	11,618.71	1.76	1.74	-0.28
17,821.00	91.86	168.58	7,127.10	-11,699.89	-597.94	14,548,490.27	1,742,413.94	40.0591746	-104.6354759	11,706.72	0.54	0.16	-0.52
Last Survey 17821.00 'MD													
17,885.00	91.86	168.58	7,125.03	-11,762.59	-585.28	14,548,427.62	1,742,426.86	40.0590025	-104.6354306	11,769.25	0.00	0.00	0.00
BHL - PTB 17885.00 'MD (98' FSL - 1413' FWL) Sec 11													

Design Annotations

Measured Depth (usft)	Vertical Depth (usft)	Local Coordinates		Comment
		+N/-S (usft)	+E/-W (usft)	
100.00	100.00	-0.08	0.07	SHL 1387' FSL & 1974' FWL Sec 35
7,490.85	7,115.20	-1,388.58	-558.24	Cross Section Line 7490.85 'MD (0' FNL - 1405' FWL) Sec 02
7,566.94	7,119.87	-1,463.63	-569.75	Cross Hard Line 7566.94 'MD (75' FNL - 1394' FWL) Sec 02
12,702.03	7,143.56	-6,590.73	-660.93	Cross Section Line 12702.03 'MD (0' FNL - 1340' FWL) Sec 11
17,821.00	7,127.10	-11,699.89	-597.94	Last Survey 17821.00 'MD
17,885.00	7,125.03	-11,762.59	-585.28	BHL - PTB 17885.00 'MD (98' FSL - 1413' FWL) Sec 11

Checked By: _____	Approved By: _____	Date: _____
-------------------	--------------------	-------------