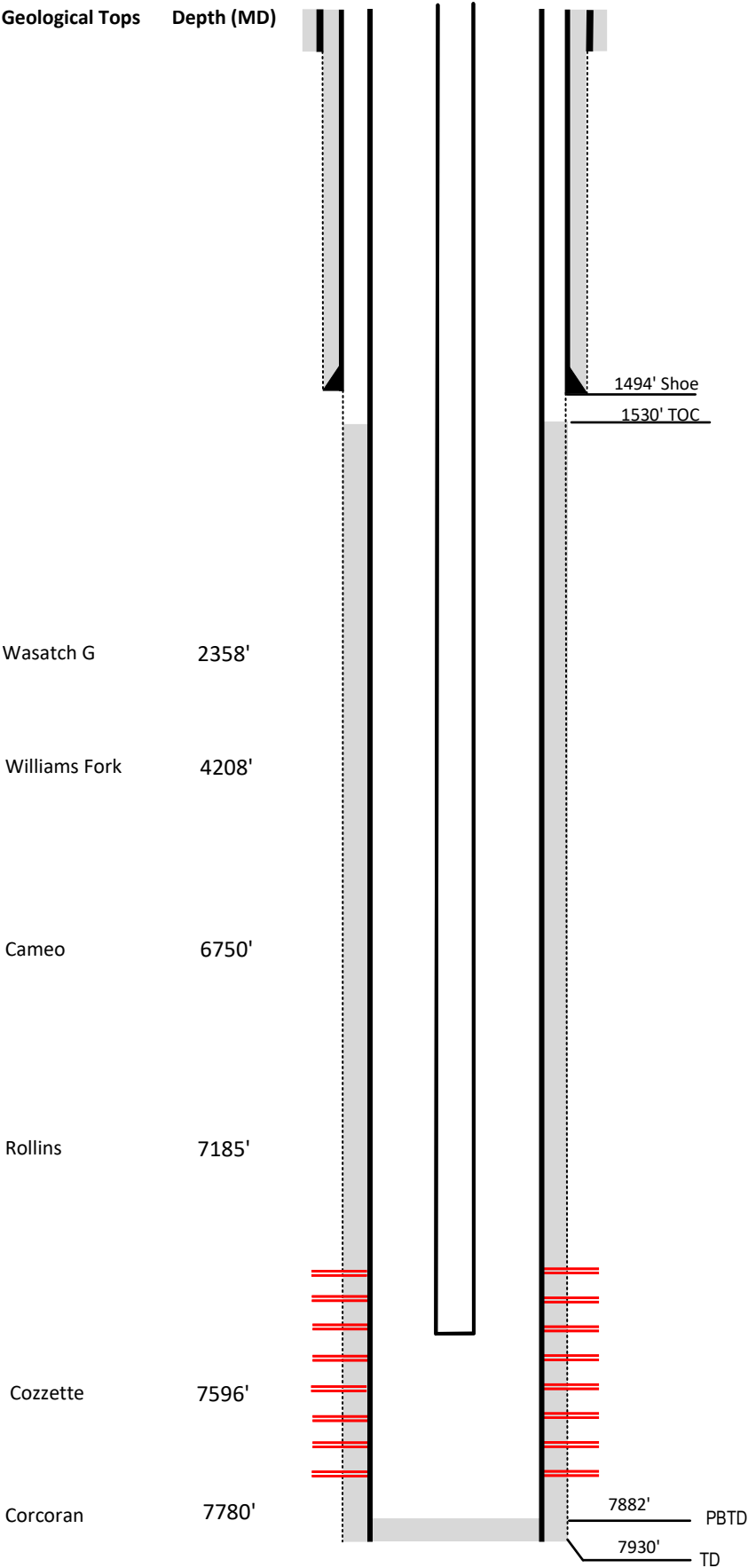


Laramie Energy

Current Wellbore Diagram

Not to scale

FEDERAL WELL: YES ☐ NO ☒



Well Name Blackman #15-9
API 05-077-09004-00
Surface Location NWSW Sec 14 T9S R97W
GPS Coordinates 39.273401, -107.855343
County, State Mesa County, CO
Diagram Date 9/14/2023

Hole 26"
Conductor 16" @ 68'
Cement Surface

Surface Hole 12.25 @ 1522'
Casing 8 5/8 32# J55 @ 1522'
Cement 440 sks
TOC Surface

Production Hole 7.875 @ 7928'
Casing 4 1/2 11.6# I-80 @ 7928'
Cement 1015 sks
TOC 1530'

Tubing 2 3/8 J55 @ 7281'

Perforations	Top	Bottom
	5498'	7866'