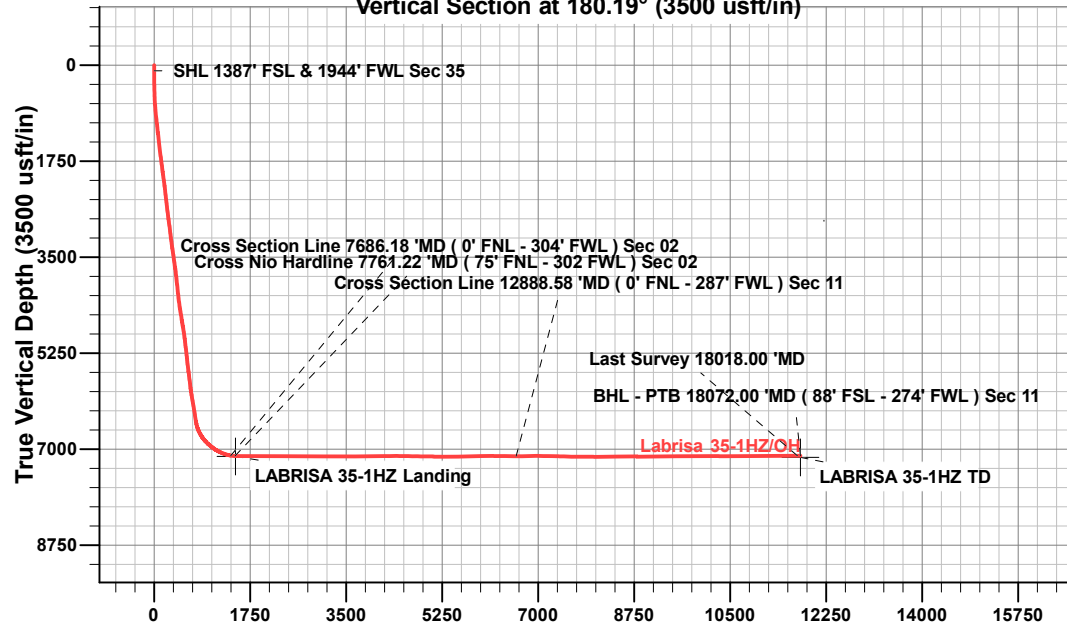


# Vertical Section at 180.19° (3500 usft/in)



## ANNOTATIONS

MD	Inc	Azi	TVD	+N/-S	+E/-W	VSect	Departure	Annotation
100.00	0.41	223.22	100.00	-0.35	-0.28	0.35	0.44	SHL 1387' FSL & 1944' FWL Sec 35
7686.18	81.69	182.43	7116.60	-1391.96	-1629.64	1397.35	2339.55	Cross Section Line 7686.18 'MD ( 0' FNL - 304' FWL ) Sec 02
7761.22	87.75	181.08	7123.25	-1466.63	-1632.01	1472.03	2414.15	Cross Nio Hardline 7761.22 'MD ( 75' FNL - 302' FWL ) Sec 02
12888.58	89.61	181.14	7128.11	-6591.62	-1684.15	6597.17	7540.88	Cross Section Line 12888.58 'MD ( 0' FNL - 287' FWL ) Sec 11
18018.00	89.41	181.56	7117.82	-11719.16	-1693.23	11724.71	12669.73	Last Survey 18018.00 'MD
18072.00	89.41	181.56	7118.38	-11773.14	-1694.70	11778.70	12723.73	BHL - PTB 18072.00 'MD ( 88' FSL - 274' FWL ) Sec 11

Project: Weld County, CO (UTM-NAD83)  
 Site: 2N-65W-35 ( Labrisa Pad )  
 Well: Labrisa 35-1HZ  
 Wellbore: OH  
 Design: OH

## FORMATION TOP DETAILS

### CASING DETAILS

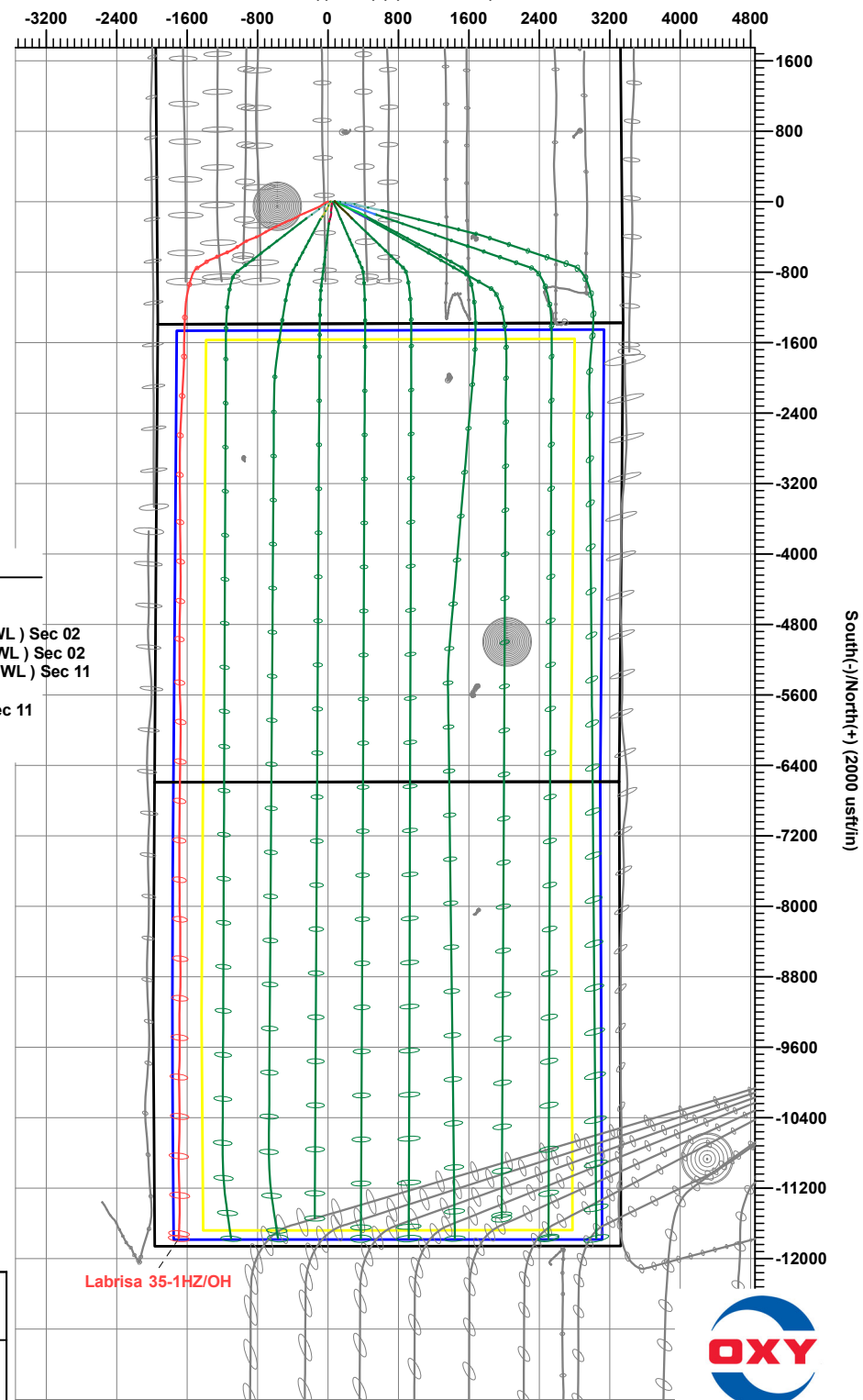
TVD	MD	Name	Size
2036.00	2083.40	9 5/8"	9-5/8
7148.00	18090.41	Prod Csg	5-1/2

TVDPATH	MDPATH	Formation
4032.00	4161.27	PKMN
4389.00	4533.07	SSSX
6930.00	7232.59	SSPG
6963.00	7282.81	NBRR
7047.00	7435.81	N470_B_CK
7119.00	7658.54	N700_C_CK

## DESIGN TARGET DETAILS

Name	TVD	+N/-S	+E/-W	Northing	Easting	Latitude	Longitude
LABRISA 35-1HZ Landing	7131.00	-1476.21	-1653.57	14558709.76	1741286.25	40.0872510	-104.6393580
LABRISA 35-1HZ TD	7148.00	-11775.81	-1688.13	14548410.11	1741294.13	40.0589670	-104.6394790

# West(-)/East(+) (2000 usft/in)



South(-)/North(+) (2000 usft/in)



# Occidental Petroleum

Weld County, CO (UTM-NAD83)

2N-65W-35 ( Labrisa Pad )

Labrisa 35-1HZ

OH

OH



## Standard Survey Report

30 January, 2024

*Total Report Version 1.60*

*COMPASS 5000.16 Build 97*

# Survey Report

<b>Company:</b>	Occidental Petroleum	<b>Local Co-ordinate Reference:</b>	Well Labrisa 35-1HZ
<b>Project:</b>	Weld County, CO (UTM-NAD83)	<b>TVD Reference:</b>	4970' GL + 26' KB @ 4996.00usft
<b>Site:</b>	2N-65W-35 ( Labrisa Pad )	<b>MD Reference:</b>	4970' GL + 26' KB @ 4996.00usft
<b>Well:</b>	Labrisa 35-1HZ	<b>North Reference:</b>	True
<b>Wellbore:</b>	OH	<b>Survey Calculation Method:</b>	Minimum Curvature
<b>Design:</b>	OH	<b>Database:</b>	.Total Directional Production DB

<b>Project</b>	Weld County, CO (UTM-NAD83)		
<b>Map System:</b>	Universal Transverse Mercator (US Survey Feet)	<b>System Datum:</b>	Ground Level
<b>Geo Datum:</b>	North American Datum 1983		
<b>Map Zone:</b>	Zone 13N (108 W to 102 W)		

<b>Site</b>	2N-65W-35 ( Labrisa Pad )		
<b>Site Position:</b>		<b>Northing:</b>	14,560,192.78 usft
<b>From:</b>	Map	<b>Easting:</b>	1,742,933.63 usft
<b>Position Uncertainty:</b>	0.00 usft	<b>Slot Radius:</b>	13-3/16 "
		<b>Latitude:</b>	40.0913051
		<b>Longitude:</b>	-104.6334463

<b>Well</b>	Labrisa 35-1HZ		
<b>Well Position</b>	<b>+N/-S</b>	0.00 usft	<b>Northing:</b>
	<b>+E/-W</b>	0.00 usft	<b>Easting:</b>
<b>Position Uncertainty</b>	3.28 usft	<b>Wellhead Elevation:</b>	usft
<b>Grid Convergence:</b>	0.24 °		
		<b>Latitude:</b>	40.0913050
		<b>Longitude:</b>	-104.6334460
		<b>Ground Level:</b>	4,970.00 usft

<b>Wellbore</b>	OH		
<b>Magnetics</b>	<b>Model Name</b>	<b>Sample Date</b>	<b>Declination</b>
	HDGM2023	11/21/2023	(°)
			7.77
		<b>Dip Angle</b>	(°)
		66.25	
		<b>Field Strength</b>	(nT)
			51,526.40000000

<b>Design</b>	OH		
<b>Audit Notes:</b>			
<b>Version:</b>	1.0	<b>Phase:</b>	ACTUAL
<b>Vertical Section:</b>	<b>Depth From (TVD)</b>	<b>+N/-S</b>	<b>+E/-W</b>
	(usft)	(usft)	(usft)
	0.00	0.00	0.00
		<b>Direction</b>	(°)
			180.19
		<b>Tie On Depth:</b>	0.00

<b>Survey Program</b>	<b>Date</b>	1/30/2024		
<b>From</b>	<b>To</b>	<b>Survey (Wellbore)</b>	<b>Tool Name</b>	<b>Description</b>
(usft)	(usft)			
89.00	2,114.00	OH (OH)	APC_ISCWSA REV 2 MWD+ Fixed:v2:crustal field declination	
2,211.00	18,072.00	Survey #2 (OH)	MWD+IFR1+SAG+MS_Rev ! ISCWSA MWD + IFR1 + Sag Correction + Multi-Station	

<b>Survey</b>													
Measured Depth	INC	AZI	Vertical Depth	Local Coordinates		Map Coordinates		Geo Coordinates		Vertical Section	Dogleg Rate	Build Rate	Turn Rate
(usft)	(°)	(°)	(usft)	+N/-S	+E/-W	Northing	Easting	Latitude	Longitude	(usft)	(°/100usft)	(°/100usft)	(°/100usft)
				(usft)	(usft)	(usft)	(usft)	(°)	(°)				
0.00	0.00	0.00	0.00	0.00	0.00	14,560,192.77	1,742,933.73	40.0913050	-104.6334460	0.00	0.00	0.00	0.00
89.00	0.47	218.13	89.00	-0.29	-0.23	14,560,192.48	1,742,933.50	40.0913042	-104.6334468	0.29	0.53	0.53	0.00
100.00	0.41	223.22	100.00	-0.35	-0.28	14,560,192.42	1,742,933.45	40.0913041	-104.6334470	0.35	0.67	-0.57	46.32
<b>SHL 1387' FSL &amp; 1944' FWL Sec 35</b>													
181.00	0.31	320.75	181.00	-0.39	-0.62	14,560,192.37	1,742,933.11	40.0913040	-104.6334482	0.39	0.67	-0.12	120.40
272.00	0.29	269.76	272.00	-0.20	-1.00	14,560,192.56	1,742,932.73	40.0913045	-104.6334496	0.20	0.28	-0.02	-56.03

# Survey Report

<b>Company:</b>	Occidental Petroleum	<b>Local Co-ordinate Reference:</b>	Well Labrisa 35-1HZ
<b>Project:</b>	Weld County, CO (UTM-NAD83)	<b>TVD Reference:</b>	4970' GL + 26' KB @ 4996.00usft
<b>Site:</b>	2N-65W-35 ( Labrisa Pad )	<b>MD Reference:</b>	4970' GL + 26' KB @ 4996.00usft
<b>Well:</b>	Labrisa 35-1HZ	<b>North Reference:</b>	True
<b>Wellbore:</b>	OH	<b>Survey Calculation Method:</b>	Minimum Curvature
<b>Design:</b>	OH	<b>Database:</b>	.Total Directional Production DB

Survey													
Measured Depth (usft)	INC (°)	AZI (°)	Vertical Depth (usft)	Local Coordinates		Map Coordinates		Geo Coordinates		Vertical Section (usft)	Dogleg Rate (°/100usft)	Build Rate (°/100usft)	Turn Rate (°/100usft)
				+N/-S (usft)	+E/-W (usft)	Northing (usft)	Easting (usft)	Latitude (°)	Longitude (°)				
363.00	2.86	243.91	362.95	-1.20	-3.27	14,560,191.55	1,742,930.46	40.0913017	-104.6334577	1.21	2.86	2.82	-28.41
452.00	4.51	243.13	451.77	-3.76	-8.39	14,560,188.97	1,742,925.36	40.0912947	-104.6334760	3.79	1.85	1.85	-0.88
542.00	4.39	246.10	541.50	-6.75	-14.69	14,560,185.95	1,742,919.06	40.0912865	-104.6334985	6.80	0.29	-0.13	3.30
631.00	6.13	242.72	630.12	-10.31	-22.03	14,560,182.37	1,742,911.74	40.0912767	-104.6335247	10.39	1.98	1.96	-3.80
721.00	8.09	245.69	719.42	-15.12	-32.07	14,560,177.51	1,742,901.72	40.0912635	-104.6335607	15.23	2.22	2.18	3.30
810.00	9.07	237.68	807.43	-21.45	-43.71	14,560,171.14	1,742,890.11	40.0912461	-104.6336023	21.60	1.73	1.10	-9.00
900.00	10.98	236.91	896.05	-29.92	-56.89	14,560,162.61	1,742,876.96	40.0912229	-104.6336494	30.11	2.13	2.12	-0.86
989.00	11.72	235.42	983.31	-39.68	-71.43	14,560,152.79	1,742,862.46	40.0911961	-104.6337014	39.92	0.89	0.83	-1.67
1,079.00	11.20	233.86	1,071.52	-50.02	-86.02	14,560,142.39	1,742,847.92	40.0911677	-104.6337535	50.31	0.67	-0.58	-1.73
1,168.00	12.38	244.23	1,158.65	-59.27	-101.59	14,560,133.08	1,742,832.38	40.0911423	-104.6338092	59.61	2.72	1.33	11.65
1,258.00	15.79	246.69	1,245.93	-68.31	-121.53	14,560,123.95	1,742,812.48	40.0911174	-104.6338805	68.72	3.85	3.79	2.73
1,347.00	16.32	247.26	1,331.46	-77.94	-144.18	14,560,114.24	1,742,789.87	40.0910910	-104.6339615	78.42	0.62	0.60	0.64
1,437.00	15.67	246.66	1,417.97	-87.64	-167.01	14,560,104.44	1,742,767.08	40.0910644	-104.6340431	88.20	0.75	-0.72	-0.67
1,526.00	16.37	246.01	1,503.52	-97.50	-189.50	14,560,094.48	1,742,744.63	40.0910373	-104.6341235	98.13	0.81	0.79	-0.73
1,616.00	16.84	244.51	1,589.76	-108.27	-212.85	14,560,083.62	1,742,721.32	40.0910077	-104.6342070	108.98	0.71	0.52	-1.67
1,705.00	17.75	246.49	1,674.74	-119.23	-236.93	14,560,072.56	1,742,697.29	40.0909776	-104.6342931	120.02	1.22	1.02	2.22
1,795.00	18.41	246.13	1,760.29	-130.46	-262.51	14,560,061.23	1,742,671.76	40.0909468	-104.6343846	131.32	0.74	0.73	-0.40
1,884.00	17.72	248.76	1,844.91	-141.05	-287.99	14,560,050.53	1,742,646.32	40.0909177	-104.6344757	142.00	1.20	-0.78	2.96
1,974.00	16.95	245.41	1,930.82	-151.47	-312.68	14,560,040.01	1,742,621.67	40.0908891	-104.6345640	152.51	1.40	-0.86	-3.72
2,063.00	15.33	238.39	2,016.32	-163.04	-334.50	14,560,028.35	1,742,599.90	40.0908573	-104.6346420	164.15	2.85	-1.82	-7.89
2,114.00	14.91	238.56	2,065.55	-169.99	-345.84	14,560,021.35	1,742,588.59	40.0908382	-104.6346825	171.14	0.83	-0.82	0.33
2,211.00	15.05	240.03	2,159.26	-182.79	-367.40	14,560,008.46	1,742,567.09	40.0908031	-104.6347596	184.01	0.42	0.14	1.52
2,301.00	16.28	247.93	2,245.92	-193.37	-389.21	14,559,997.79	1,742,545.31	40.0907740	-104.6348376	194.66	2.73	1.37	8.78
2,390.00	15.73	246.96	2,331.47	-202.78	-411.88	14,559,988.29	1,742,522.69	40.0907482	-104.6349186	204.15	0.69	-0.62	-1.09
2,480.00	16.99	247.01	2,417.83	-212.69	-435.21	14,559,978.29	1,742,499.40	40.0907209	-104.6350021	214.13	1.40	1.40	0.06
2,569.00	16.28	247.42	2,503.10	-222.56	-458.70	14,559,968.32	1,742,475.95	40.0906938	-104.6350860	224.08	0.81	-0.80	0.46
2,659.00	15.63	247.21	2,589.63	-232.10	-481.52	14,559,958.69	1,742,453.16	40.0906676	-104.6351677	233.70	0.73	-0.72	-0.23
2,748.00	16.74	243.01	2,675.11	-242.56	-504.00	14,559,948.13	1,742,430.73	40.0906389	-104.6352480	244.23	1.81	1.25	-4.72
2,838.00	15.34	244.03	2,761.60	-253.66	-526.25	14,559,936.94	1,742,408.52	40.0906084	-104.6353276	255.40	1.59	-1.56	1.13
2,927.00	17.33	243.87	2,847.01	-264.65	-548.74	14,559,925.86	1,742,386.08	40.0905782	-104.6354080	266.47	2.24	2.24	-0.18
3,017.00	16.23	244.31	2,933.17	-276.01	-572.11	14,559,914.41	1,742,362.76	40.0905471	-104.6354915	277.90	1.23	-1.22	0.49
3,106.00	16.14	244.19	3,018.64	-286.79	-594.45	14,559,903.54	1,742,340.46	40.0905175	-104.6355714	288.76	0.11	-0.10	-0.13
3,196.00	15.31	243.91	3,105.28	-297.46	-616.39	14,559,892.77	1,742,318.57	40.0904882	-104.6356498	299.50	0.93	-0.92	-0.31
3,286.00	17.64	244.14	3,191.57	-308.63	-639.33	14,559,881.50	1,742,295.67	40.0904575	-104.6357319	310.75	2.59	2.59	0.26
3,375.00	16.46	244.65	3,276.66	-319.91	-662.86	14,559,870.13	1,742,272.19	40.0904265	-104.6358160	322.11	1.34	-1.33	0.57
3,464.00	17.32	240.04	3,361.83	-331.93	-685.74	14,559,858.02	1,742,249.36	40.0903935	-104.6358978	334.20	1.79	0.97	-5.18
3,554.00	15.97	240.14	3,448.05	-344.78	-708.08	14,559,845.07	1,742,227.07	40.0903582	-104.6359777	347.13	1.50	-1.50	0.11
3,644.00	14.49	239.11	3,534.89	-356.73	-728.48	14,559,833.04	1,742,206.72	40.0903254	-104.6360506	359.14	1.67	-1.64	-1.14

# Survey Report

<b>Company:</b>	Occidental Petroleum	<b>Local Co-ordinate Reference:</b>	Well Labrisa 35-1HZ
<b>Project:</b>	Weld County, CO (UTM-NAD83)	<b>TVD Reference:</b>	4970' GL + 26' KB @ 4996.00usft
<b>Site:</b>	2N-65W-35 ( Labrisa Pad )	<b>MD Reference:</b>	4970' GL + 26' KB @ 4996.00usft
<b>Well:</b>	Labrisa 35-1HZ	<b>North Reference:</b>	True
<b>Wellbore:</b>	OH	<b>Survey Calculation Method:</b>	Minimum Curvature
<b>Design:</b>	OH	<b>Database:</b>	.Total Directional Production DB

Survey													
Measured Depth (usft)	INC (°)	AZI (°)	Vertical Depth (usft)	Local Coordinates +N/-S (usft)	+E/-W (usft)	Map Coordinates Northing (usft)	Easting (usft)	Geo Coordinates Latitude (°)	Longitude (°)	Vertical Section (usft)	Dogleg Rate (°/100usft)	Build Rate (°/100usft)	Turn Rate (°/100usft)
3,733.00	16.24	240.45	3,620.70	-368.58	-748.87	14,559,821.10	1,742,186.39	40.0902928	-104.6361235	371.07	2.01	1.97	1.51
3,823.00	14.83	237.39	3,707.42	-381.00	-769.52	14,559,808.60	1,742,165.79	40.0902587	-104.6361973	383.55	1.81	-1.57	-3.40
3,912.00	16.51	247.47	3,793.12	-391.99	-790.80	14,559,797.53	1,742,144.55	40.0902286	-104.6362734	394.61	3.59	1.89	11.33
4,002.00	14.90	247.38	3,879.76	-401.34	-813.29	14,559,788.08	1,742,122.10	40.0902029	-104.6363539	404.03	1.79	-1.79	-0.10
4,092.00	17.43	247.94	3,966.19	-410.85	-836.47	14,559,778.47	1,742,098.96	40.0901767	-104.6364367	413.62	2.82	2.81	0.62
4,181.00	16.36	248.83	4,051.35	-420.38	-860.51	14,559,768.84	1,742,074.95	40.0901506	-104.6365227	423.24	1.24	-1.20	1.00
4,271.00	15.88	248.52	4,137.81	-429.47	-883.79	14,559,759.66	1,742,051.71	40.0901256	-104.6366059	432.40	0.54	-0.53	-0.34
4,360.00	15.26	248.40	4,223.55	-438.24	-906.01	14,559,750.80	1,742,029.53	40.0901015	-104.6366854	441.24	0.70	-0.70	-0.13
4,450.00	16.09	240.15	4,310.21	-448.81	-927.84	14,559,740.14	1,742,007.74	40.0900725	-104.6367634	451.88	2.64	0.92	-9.17
4,539.00	15.10	240.42	4,395.93	-460.67	-948.62	14,559,728.19	1,741,987.01	40.0900399	-104.6368377	463.81	1.12	-1.11	0.30
4,629.00	17.19	235.63	4,482.38	-473.97	-969.80	14,559,714.81	1,741,965.89	40.0900034	-104.6369134	477.18	2.75	2.32	-5.32
4,718.00	15.98	237.02	4,567.68	-488.06	-990.93	14,559,700.63	1,741,944.82	40.0899647	-104.6369890	491.35	1.43	-1.36	1.56
4,808.00	15.31	236.02	4,654.34	-501.45	-1,011.18	14,559,687.16	1,741,924.63	40.0899279	-104.6370614	504.80	0.80	-0.74	-1.11
4,898.00	18.17	237.83	4,740.52	-515.56	-1,032.91	14,559,672.95	1,741,902.95	40.0898892	-104.6371391	518.98	3.23	3.18	2.01
5,009.00	16.40	238.21	4,846.50	-533.03	-1,060.88	14,559,655.37	1,741,875.05	40.0898412	-104.6372391	536.55	1.60	-1.59	0.34
5,099.00	14.68	237.91	4,933.21	-545.79	-1,081.35	14,559,642.53	1,741,854.64	40.0898062	-104.6373122	549.37	1.91	-1.91	-0.33
5,188.00	14.86	247.65	5,019.28	-556.12	-1,101.46	14,559,632.12	1,741,834.57	40.0897778	-104.6373842	559.77	2.79	0.20	10.94
5,278.00	16.18	243.16	5,106.00	-566.17	-1,123.32	14,559,621.98	1,741,812.75	40.0897502	-104.6374623	569.89	1.98	1.47	-4.99
5,367.00	16.30	246.81	5,191.45	-576.69	-1,145.87	14,559,611.37	1,741,790.25	40.0897213	-104.6375429	580.48	1.15	0.13	4.10
5,457.00	17.04	248.43	5,277.67	-586.51	-1,169.74	14,559,601.45	1,741,766.41	40.0896943	-104.6376283	590.38	0.97	0.82	1.80
5,547.00	14.48	247.82	5,364.28	-595.61	-1,192.43	14,559,592.26	1,741,743.76	40.0896693	-104.6377094	599.56	2.85	-2.84	-0.68
5,636.00	16.21	245.44	5,450.10	-604.97	-1,214.03	14,559,582.80	1,741,722.20	40.0896436	-104.6377866	608.99	2.07	1.94	-2.67
5,726.00	17.29	245.35	5,536.28	-615.77	-1,237.61	14,559,571.90	1,741,698.66	40.0896140	-104.6378710	619.87	1.20	1.20	-0.10
5,816.00	14.74	243.63	5,622.78	-626.44	-1,260.03	14,559,561.15	1,741,676.29	40.0895847	-104.6379511	630.61	2.88	-2.83	-1.91
5,905.00	16.63	244.10	5,708.47	-637.03	-1,281.63	14,559,550.47	1,741,654.73	40.0895556	-104.6380283	641.27	2.13	2.12	0.53
5,995.00	17.16	247.58	5,794.58	-647.72	-1,305.49	14,559,539.68	1,741,630.91	40.0895262	-104.6381136	652.04	1.27	0.59	3.87
6,084.00	18.39	251.40	5,879.34	-657.20	-1,330.94	14,559,530.09	1,741,605.51	40.0895002	-104.6382046	661.61	1.90	1.38	4.29
6,174.00	18.56	238.70	5,964.73	-669.18	-1,356.64	14,559,518.01	1,741,579.85	40.0894673	-104.6382965	673.67	4.47	0.19	-14.11
6,264.00	16.23	236.79	6,050.61	-683.51	-1,379.41	14,559,503.58	1,741,557.15	40.0894279	-104.6383779	688.08	2.67	-2.59	-2.12
6,353.00	17.00	233.27	6,135.90	-698.10	-1,400.24	14,559,488.90	1,741,536.37	40.0893878	-104.6384524	702.74	1.42	0.87	-3.96
6,443.00	16.51	236.01	6,222.08	-713.12	-1,421.39	14,559,473.80	1,741,515.29	40.0893466	-104.6385280	717.83	1.03	-0.54	3.04
6,532.00	17.14	237.55	6,307.27	-727.23	-1,442.94	14,559,459.60	1,741,493.79	40.0893079	-104.6386051	732.01	0.87	0.71	1.73
6,622.00	16.49	240.32	6,393.42	-740.67	-1,465.23	14,559,446.07	1,741,471.56	40.0892709	-104.6386848	745.52	1.15	-0.72	3.08
6,712.00	16.43	238.95	6,479.73	-753.56	-1,487.23	14,559,433.09	1,741,449.61	40.0892355	-104.6387634	758.49	0.44	-0.07	-1.52
6,801.00	18.34	220.88	6,564.73	-770.65	-1,507.20	14,559,415.91	1,741,429.72	40.0891886	-104.6388348	775.65	6.40	2.15	-20.30
6,891.00	25.03	208.17	6,648.35	-798.19	-1,525.48	14,559,388.30	1,741,411.55	40.0891130	-104.6389002	803.24	9.04	7.43	-14.12
6,980.00	31.22	200.40	6,726.83	-836.45	-1,542.43	14,559,349.97	1,741,394.75	40.0890079	-104.6389608	841.56	8.07	6.96	-8.73

# Survey Report

<b>Company:</b>	Occidental Petroleum	<b>Local Co-ordinate Reference:</b>	Well Labrisa 35-1HZ
<b>Project:</b>	Weld County, CO (UTM-NAD83)	<b>TVD Reference:</b>	4970' GL + 26' KB @ 4996.00usft
<b>Site:</b>	2N-65W-35 ( Labrisa Pad )	<b>MD Reference:</b>	4970' GL + 26' KB @ 4996.00usft
<b>Well:</b>	Labrisa 35-1HZ	<b>North Reference:</b>	True
<b>Wellbore:</b>	OH	<b>Survey Calculation Method:</b>	Minimum Curvature
<b>Design:</b>	OH	<b>Database:</b>	.Total Directional Production DB

Survey													
Measured Depth (usft)	INC (°)	AZI (°)	Vertical Depth (usft)	Local Coordinates +N/-S (usft)	+E/-W (usft)	Map Coordinates Northing (usft)	Easting (usft)	Geo Coordinates Latitude (°)	Longituge (°)	Vertical Section (usft)	Dogleg Rate (°/100usft)	Build Rate (°/100usft)	Turn Rate (°/100usft)
7,070.00	37.72	197.11	6,801.00	-884.68	-1,558.68	14,559,301.67	1,741,378.70	40.0888754	-104.6390188	889.85	7.51	7.22	-3.66
7,159.00	44.76	194.94	6,867.88	-941.05	-1,574.79	14,559,245.23	1,741,362.83	40.0887206	-104.6390764	946.27	8.07	7.91	-2.44
7,249.00	50.51	191.88	6,928.51	-1,005.72	-1,590.12	14,559,180.51	1,741,347.76	40.0885431	-104.6391312	1,010.98	6.86	6.39	-3.40
7,338.00	54.06	190.08	6,982.95	-1,074.82	-1,603.50	14,559,111.35	1,741,334.67	40.0883533	-104.6391791	1,080.13	4.30	3.99	-2.02
7,428.00	61.42	186.24	7,030.97	-1,150.10	-1,614.19	14,559,036.03	1,741,324.29	40.0881466	-104.6392173	1,155.44	8.94	8.18	-4.27
7,517.00	68.33	183.67	7,068.74	-1,230.32	-1,621.10	14,558,955.78	1,741,317.71	40.0879263	-104.6392419	1,235.69	8.19	7.76	-2.89
7,607.00	72.48	182.98	7,098.92	-1,314.95	-1,626.01	14,558,871.13	1,741,313.15	40.0876939	-104.6392595	1,320.33	4.67	4.61	-0.77
7,686.18	81.69	182.43	7,116.60	-1,391.96	-1,629.64	14,558,794.11	1,741,309.84	40.0874824	-104.6392724	1,397.35	11.65	11.63	-0.69
Cross Section Line 7686.18 'MD ( 0' FNL - 304' FWL ) Sec 02													
7,697.00	82.95	182.36	7,118.04	-1,402.67	-1,630.09	14,558,783.39	1,741,309.43	40.0874530	-104.6392740	1,408.07	11.65	11.63	-0.67
7,761.22	87.75	181.08	7,123.25	-1,466.63	-1,632.01	14,558,719.43	1,741,307.78	40.0872773	-104.6392809	1,472.03	7.73	7.47	-1.99
Cross Nio Hardline 7761.22 'MD ( 75' FNL - 302' FWL ) Sec 02													
7,786.00	89.60	180.59	7,123.82	-1,491.40	-1,632.37	14,558,694.66	1,741,307.52	40.0872093	-104.6392822	1,496.80	7.73	7.47	-1.98
7,876.00	90.33	181.11	7,123.88	-1,581.39	-1,633.70	14,558,604.66	1,741,306.55	40.0869622	-104.6392869	1,586.80	1.00	0.81	0.58
7,965.00	88.73	180.49	7,124.61	-1,670.37	-1,634.95	14,558,515.67	1,741,305.68	40.0867178	-104.6392913	1,675.79	1.93	-1.80	-0.70
8,055.00	89.27	179.86	7,126.18	-1,760.36	-1,635.22	14,558,425.69	1,741,305.77	40.0864707	-104.6392923	1,765.77	0.92	0.60	-0.70
8,144.00	89.95	183.01	7,126.78	-1,849.32	-1,637.45	14,558,336.72	1,741,303.91	40.0862264	-104.6393002	1,854.74	3.62	0.76	3.54
8,233.00	90.31	182.90	7,126.58	-1,938.20	-1,642.04	14,558,247.82	1,741,299.69	40.0859824	-104.6393166	1,943.63	0.42	0.40	-0.12
8,323.00	90.15	183.04	7,126.22	-2,028.08	-1,646.70	14,558,157.92	1,741,295.40	40.0857355	-104.6393333	2,033.53	0.24	-0.18	0.16
8,412.00	90.58	183.34	7,125.65	-2,116.94	-1,651.65	14,558,069.04	1,741,290.81	40.0854915	-104.6393510	2,122.40	0.59	0.48	0.34
8,502.00	89.12	183.15	7,125.89	-2,206.79	-1,656.75	14,557,979.17	1,741,286.09	40.0852448	-104.6393692	2,212.27	1.64	-1.62	-0.21
8,592.00	88.92	183.22	7,127.43	-2,296.64	-1,661.75	14,557,889.30	1,741,281.46	40.0849980	-104.6393870	2,302.14	0.24	-0.22	0.08
8,681.00	89.14	183.23	7,128.93	-2,385.48	-1,666.75	14,557,800.44	1,741,276.82	40.0847541	-104.6394049	2,391.00	0.25	0.25	0.01
8,771.00	89.54	183.03	7,129.97	-2,475.34	-1,671.67	14,557,710.56	1,741,272.27	40.0845073	-104.6394224	2,480.87	0.50	0.44	-0.22
8,861.00	89.20	182.74	7,130.96	-2,565.22	-1,676.20	14,557,620.66	1,741,268.11	40.0842605	-104.6394386	2,570.77	0.50	-0.38	-0.32
8,950.00	90.34	180.72	7,131.32	-2,654.18	-1,678.88	14,557,531.70	1,741,265.79	40.0840162	-104.6394482	2,659.73	2.61	1.28	-2.27
9,040.00	89.73	181.11	7,131.26	-2,744.16	-1,680.32	14,557,441.70	1,741,264.73	40.0837691	-104.6394533	2,749.72	0.80	-0.68	0.43
9,129.00	89.62	181.62	7,131.77	-2,833.14	-1,682.44	14,557,352.72	1,741,262.97	40.0835247	-104.6394609	2,838.70	0.59	-0.12	0.57
9,219.00	90.42	179.90	7,131.74	-2,923.12	-1,683.63	14,557,262.73	1,741,262.15	40.0832776	-104.6394651	2,928.69	2.11	0.89	-1.91
9,309.00	89.79	179.60	7,131.57	-3,013.12	-1,683.24	14,557,172.74	1,741,262.91	40.0830305	-104.6394637	3,018.69	0.78	-0.70	-0.33
9,398.00	89.66	180.05	7,132.00	-3,102.12	-1,682.97	14,557,083.74	1,741,263.55	40.0827861	-104.6394627	3,107.69	0.53	-0.15	0.51
9,488.00	88.85	180.14	7,133.17	-3,192.11	-1,683.12	14,556,993.75	1,741,263.77	40.0825389	-104.6394632	3,197.68	0.91	-0.90	0.10
9,577.00	90.90	179.73	7,133.36	-3,281.11	-1,683.02	14,556,904.75	1,741,264.24	40.0822946	-104.6394628	3,286.67	2.35	2.30	-0.46
9,756.00	90.35	179.01	7,131.41	-3,460.08	-1,681.05	14,556,725.79	1,741,266.95	40.0818031	-104.6394557	3,465.64	0.51	-0.31	-0.40
9,846.00	90.21	180.29	7,130.97	-3,550.08	-1,680.50	14,556,635.79	1,741,267.87	40.0815559	-104.6394537	3,555.63	1.43	-0.16	1.42
9,935.00	89.90	179.65	7,130.88	-3,639.08	-1,680.45	14,556,546.80	1,741,268.28	40.0813115	-104.6394536	3,644.63	0.80	-0.35	-0.72
10,025.00	89.29	179.58	7,131.52	-3,729.07	-1,679.85	14,556,456.80	1,741,269.26	40.0810644	-104.6394514	3,734.62	0.68	-0.68	-0.08
10,114.00	91.80	178.99	7,130.67	-3,818.06	-1,678.74	14,556,367.83	1,741,270.73	40.0808200	-104.6394474	3,823.60	2.90	2.82	-0.66

# Survey Report

<b>Company:</b>	Occidental Petroleum	<b>Local Co-ordinate Reference:</b>	Well Labrisa 35-1HZ
<b>Project:</b>	Weld County, CO (UTM-NAD83)	<b>TVD Reference:</b>	4970' GL + 26' KB @ 4996.00usft
<b>Site:</b>	2N-65W-35 ( Labrisa Pad )	<b>MD Reference:</b>	4970' GL + 26' KB @ 4996.00usft
<b>Well:</b>	Labrisa 35-1HZ	<b>North Reference:</b>	True
<b>Wellbore:</b>	OH	<b>Survey Calculation Method:</b>	Minimum Curvature
<b>Design:</b>	OH	<b>Database:</b>	.Total Directional Production DB

Survey													
Measured Depth (usft)	INC (°)	AZI (°)	Vertical Depth (usft)	Local Coordinates +N/-S (usft)	Local Coordinates +E/-W (usft)	Map Coordinates Northing (usft)	Map Coordinates Easting (usft)	Geo Coordinates Latitude (°)	Geo Coordinates Longitude (°)	Vertical Section (usft)	Dogleg Rate (°/100usft)	Build Rate (°/100usft)	Turn Rate (°/100usft)
10,204.00	92.40	178.86	7,127.38	-3,907.98	-1,677.05	14,556,277.91	1,741,272.79	40.0805731	-104.6394413	3,913.52	0.68	0.67	-0.14
10,294.00	90.71	179.54	7,124.93	-3,997.93	-1,675.80	14,556,187.96	1,741,274.42	40.0803261	-104.6394368	4,003.47	2.02	-1.88	0.76
10,383.00	90.47	179.83	7,124.02	-4,086.93	-1,675.31	14,556,098.97	1,741,275.27	40.0800817	-104.6394350	4,092.46	0.42	-0.27	0.33
10,473.00	89.62	179.73	7,123.95	-4,176.93	-1,674.96	14,556,008.98	1,741,275.99	40.0798345	-104.6394338	4,182.46	0.95	-0.94	-0.11
10,562.00	89.94	178.94	7,124.29	-4,265.92	-1,673.93	14,555,919.99	1,741,277.39	40.0795901	-104.6394301	4,271.45	0.96	0.36	-0.89
10,652.00	90.62	180.52	7,123.85	-4,355.91	-1,673.50	14,555,830.00	1,741,278.19	40.0793430	-104.6394285	4,361.44	1.91	0.76	1.76
10,742.00	89.87	181.48	7,123.46	-4,445.90	-1,675.07	14,555,740.01	1,741,276.99	40.0790959	-104.6394341	4,451.43	1.35	-0.83	1.07
10,831.00	88.81	182.10	7,124.49	-4,534.85	-1,677.85	14,555,651.05	1,741,274.57	40.0788516	-104.6394440	4,540.38	1.38	-1.19	0.70
10,921.00	88.06	182.15	7,126.95	-4,624.75	-1,681.19	14,555,561.13	1,741,271.61	40.0786048	-104.6394559	4,630.30	0.84	-0.83	0.06
11,011.00	89.49	181.38	7,128.87	-4,714.68	-1,683.96	14,555,471.19	1,741,269.21	40.0783578	-104.6394658	4,720.24	1.80	1.59	-0.86
11,100.00	88.48	181.34	7,130.45	-4,803.64	-1,686.07	14,555,382.22	1,741,267.46	40.0781135	-104.6394734	4,809.21	1.14	-1.13	-0.04
11,190.00	89.86	179.78	7,131.75	-4,893.62	-1,686.95	14,555,292.23	1,741,266.95	40.0778664	-104.6394765	4,899.19	2.31	1.53	-1.73
11,264.00	89.31	180.11	7,132.29	-4,967.62	-1,686.88	14,555,218.24	1,741,267.33	40.0776632	-104.6394762	4,973.19	0.87	-0.74	0.45
11,309.00	88.75	180.06	7,133.05	-5,012.62	-1,686.95	14,555,173.24	1,741,267.45	40.0775396	-104.6394764	5,018.18	1.25	-1.24	-0.11
11,399.00	89.96	180.03	7,134.06	-5,102.61	-1,687.02	14,555,083.25	1,741,267.75	40.0772925	-104.6394767	5,108.17	1.34	1.34	-0.03
11,578.00	88.50	180.11	7,136.47	-5,281.59	-1,687.24	14,554,904.27	1,741,268.27	40.0768010	-104.6394774	5,287.15	0.82	-0.82	0.04
11,668.00	90.49	179.02	7,137.26	-5,371.58	-1,686.55	14,554,814.29	1,741,269.32	40.0765539	-104.6394749	5,377.14	2.52	2.21	-1.21
11,757.00	89.90	179.60	7,136.96	-5,460.57	-1,685.48	14,554,725.30	1,741,270.76	40.0763095	-104.6394711	5,466.13	0.93	-0.66	0.65
11,847.00	91.65	178.67	7,135.74	-5,550.54	-1,684.12	14,554,635.33	1,741,272.49	40.0760624	-104.6394662	5,556.10	2.20	1.94	-1.03
11,937.00	91.28	177.60	7,133.44	-5,640.47	-1,681.20	14,554,545.42	1,741,275.79	40.0758155	-104.6394557	5,646.01	1.26	-0.41	-1.19
12,026.00	91.89	177.30	7,130.98	-5,729.34	-1,677.24	14,554,456.56	1,741,280.11	40.0755714	-104.6394415	5,734.87	0.76	0.69	-0.34
12,116.00	91.38	179.70	7,128.41	-5,819.27	-1,674.88	14,554,366.65	1,741,282.84	40.0753245	-104.6394331	5,824.79	2.73	-0.57	2.67
12,205.00	92.23	179.22	7,125.61	-5,908.22	-1,674.04	14,554,277.70	1,741,284.04	40.0750802	-104.6394301	5,913.74	1.10	0.96	-0.54
12,295.00	89.82	180.20	7,124.00	-5,998.20	-1,673.59	14,554,187.73	1,741,284.87	40.0748331	-104.6394284	6,003.71	2.89	-2.68	1.09
12,385.00	90.78	180.00	7,123.53	-6,088.19	-1,673.75	14,554,097.73	1,741,285.08	40.0745860	-104.6394290	6,093.71	1.09	1.07	-0.22
12,474.00	89.28	181.06	7,123.48	-6,177.19	-1,674.57	14,554,008.74	1,741,284.62	40.0743416	-104.6394319	6,182.71	2.06	-1.69	1.19
12,564.00	89.97	180.78	7,124.07	-6,267.17	-1,676.01	14,553,918.74	1,741,283.55	40.0740945	-104.6394370	6,272.70	0.83	0.77	-0.31
12,654.00	88.94	181.31	7,124.92	-6,357.15	-1,677.66	14,553,828.76	1,741,282.28	40.0738474	-104.6394429	6,362.68	1.29	-1.14	0.59
12,743.00	89.18	181.84	7,126.38	-6,446.11	-1,680.10	14,553,739.80	1,741,280.20	40.0736031	-104.6394516	6,451.64	0.65	0.27	0.60
12,833.00	89.30	181.61	7,127.58	-6,536.06	-1,682.81	14,553,649.83	1,741,277.86	40.0733561	-104.6394613	6,541.60	0.29	0.13	-0.26
12,888.58	89.61	181.14	7,128.11	-6,591.62	-1,684.15	14,553,594.27	1,741,276.76	40.0732035	-104.6394660	6,597.17	1.01	0.55	-0.84
Cross Section Line 12888.58 'MD ( 0' FNL - 287' FWL ) Sec 11													
12,922.00	89.79	180.86	7,128.28	-6,625.03	-1,684.73	14,553,560.85	1,741,276.31	40.0731117	-104.6394681	6,630.58	1.01	0.55	-0.84
13,012.00	90.39	180.20	7,128.14	-6,715.03	-1,685.56	14,553,470.85	1,741,275.85	40.0728646	-104.6394711	6,720.58	0.99	0.67	-0.73
13,102.00	91.08	179.83	7,126.99	-6,805.02	-1,685.59	14,553,380.86	1,741,276.20	40.0726175	-104.6394711	6,810.57	0.87	0.77	-0.41
13,191.00	92.16	179.00	7,124.47	-6,893.98	-1,684.68	14,553,291.91	1,741,277.47	40.0723732	-104.6394679	6,899.53	1.53	1.21	-0.93
13,281.00	89.95	180.40	7,122.82	-6,983.95	-1,684.21	14,553,201.94	1,741,278.31	40.0721261	-104.6394661	6,989.50	2.91	-2.46	1.56
13,370.00	88.92	181.16	7,123.69	-7,072.94	-1,685.42	14,553,112.95	1,741,277.47	40.0718817	-104.6394705	7,078.49	1.44	-1.16	0.85



# Survey Report

<b>Company:</b>	Occidental Petroleum	<b>Local Co-ordinate Reference:</b>	Well Labrisa 35-1HZ
<b>Project:</b>	Weld County, CO (UTM-NAD83)	<b>TVD Reference:</b>	4970' GL + 26' KB @ 4996.00usft
<b>Site:</b>	2N-65W-35 ( Labrisa Pad )	<b>MD Reference:</b>	4970' GL + 26' KB @ 4996.00usft
<b>Well:</b>	Labrisa 35-1HZ	<b>North Reference:</b>	True
<b>Wellbore:</b>	OH	<b>Survey Calculation Method:</b>	Minimum Curvature
<b>Design:</b>	OH	<b>Database:</b>	.Total Directional Production DB

Survey													
Measured Depth (usft)	INC (°)	AZI (°)	Vertical Depth (usft)	+N/-S (usft)	+E/-W (usft)	Map Coordinates Northing (usft)	Map Coordinates Easting (usft)	Geo Coordinates Latitude (°)	Geo Coordinates Longitude (°)	Vertical Section (usft)	Dogleg Rate (°/100usft)	Build Rate (°/100usft)	Turn Rate (°/100usft)
13,460.00	89.65	180.96	7,124.82	-7,162.92	-1,687.08	14,553,022.96	1,741,276.17	40.0716346	-104.6394764	7,168.47	0.84	0.81	-0.22
13,549.00	87.90	180.93	7,126.72	-7,251.88	-1,688.55	14,552,933.99	1,741,275.07	40.0713903	-104.6394816	7,257.44	1.97	-1.97	-0.03
13,639.00	88.40	180.44	7,129.62	-7,341.83	-1,689.63	14,552,844.04	1,741,274.37	40.0711433	-104.6394854	7,347.39	0.78	0.56	-0.54
13,728.00	88.61	180.16	7,131.95	-7,430.79	-1,690.09	14,552,755.07	1,741,274.27	40.0708990	-104.6394871	7,436.36	0.39	0.24	-0.31
13,818.00	88.87	179.79	7,133.93	-7,520.77	-1,690.05	14,552,665.10	1,741,274.68	40.0706519	-104.6394869	7,526.34	0.50	0.29	-0.41
13,908.00	88.67	179.33	7,135.86	-7,610.75	-1,689.36	14,552,575.12	1,741,275.74	40.0704048	-104.6394844	7,616.31	0.56	-0.22	-0.51
13,997.00	90.18	179.10	7,136.75	-7,699.73	-1,688.14	14,552,486.15	1,741,277.33	40.0701605	-104.6394800	7,705.29	1.72	1.70	-0.26
14,087.00	91.20	178.22	7,135.67	-7,789.70	-1,686.04	14,552,396.19	1,741,279.80	40.0699134	-104.6394725	7,795.25	1.50	1.13	-0.98
14,177.00	88.94	180.66	7,135.56	-7,879.68	-1,685.16	14,552,306.21	1,741,281.05	40.0696663	-104.6394693	7,885.23	3.70	-2.51	2.71
14,267.00	89.28	180.23	7,136.95	-7,969.67	-1,685.86	14,552,216.22	1,741,280.72	40.0694192	-104.6394718	7,975.22	0.61	0.38	-0.48
14,356.00	89.02	177.87	7,138.27	-8,058.64	-1,684.38	14,552,127.26	1,741,282.56	40.0691749	-104.6394665	8,064.18	2.67	-0.29	-2.65
14,446.00	90.78	178.31	7,138.43	-8,148.59	-1,681.38	14,552,037.32	1,741,285.93	40.0689279	-104.6394558	8,154.12	2.02	1.96	0.49
14,536.00	91.22	178.60	7,136.86	-8,238.54	-1,678.96	14,551,947.38	1,741,288.73	40.0686808	-104.6394471	8,244.06	0.59	0.49	0.32
14,625.00	90.59	180.81	7,135.46	-8,327.52	-1,678.50	14,551,858.40	1,741,289.56	40.0684365	-104.6394454	8,333.04	2.58	-0.71	2.48
14,715.00	91.02	180.23	7,134.19	-8,417.51	-1,679.31	14,551,768.41	1,741,289.11	40.0681894	-104.6394483	8,423.03	0.80	0.48	-0.64
14,805.00	91.29	179.00	7,132.38	-8,507.49	-1,678.71	14,551,678.44	1,741,290.09	40.0679423	-104.6394461	8,513.01	1.40	0.30	-1.37
14,894.00	89.57	180.07	7,131.71	-8,596.48	-1,677.99	14,551,589.45	1,741,291.17	40.0676979	-104.6394435	8,601.99	2.28	-1.93	1.20
14,984.00	89.40	179.15	7,132.52	-8,686.47	-1,677.38	14,551,499.46	1,741,292.16	40.0674508	-104.6394413	8,691.98	1.04	-0.19	-1.02
15,074.00	89.09	178.78	7,133.70	-8,776.45	-1,675.75	14,551,409.49	1,741,294.15	40.0672037	-104.6394355	8,781.96	0.54	-0.34	-0.41
15,163.00	89.59	181.50	7,134.73	-8,865.43	-1,675.97	14,551,320.51	1,741,294.30	40.0669593	-104.6394362	8,870.94	3.11	0.56	3.06
15,253.00	90.55	182.91	7,134.62	-8,955.36	-1,679.43	14,551,230.56	1,741,291.21	40.0667123	-104.6394486	8,960.88	1.90	1.07	1.57
15,343.00	90.01	181.37	7,134.18	-9,045.29	-1,682.79	14,551,140.62	1,741,288.22	40.0664654	-104.6394606	9,050.83	1.81	-0.60	-1.71
15,432.00	90.40	181.49	7,133.86	-9,134.27	-1,685.01	14,551,051.64	1,741,286.37	40.0662210	-104.6394685	9,139.80	0.46	0.44	0.13
15,522.00	90.97	180.97	7,132.78	-9,224.24	-1,686.94	14,550,961.66	1,741,284.81	40.0659740	-104.6394754	9,229.78	0.86	0.63	-0.58
15,611.00	90.75	180.59	7,131.45	-9,313.22	-1,688.15	14,550,872.67	1,741,283.96	40.0657296	-104.6394797	9,318.77	0.49	-0.25	-0.43
15,701.00	89.86	178.88	7,130.97	-9,403.21	-1,687.74	14,550,782.68	1,741,284.75	40.0654825	-104.6394782	9,408.76	2.14	-0.99	-1.90
15,790.00	90.93	179.78	7,130.36	-9,492.20	-1,686.70	14,550,693.70	1,741,286.16	40.0652381	-104.6394744	9,497.74	1.57	1.20	1.01
15,880.00	90.28	177.02	7,129.41	-9,582.15	-1,684.18	14,550,603.76	1,741,289.04	40.0649911	-104.6394654	9,587.69	3.15	-0.72	-3.07
15,970.00	90.49	182.14	7,128.80	-9,672.12	-1,683.53	14,550,513.79	1,741,290.07	40.0647440	-104.6394630	9,677.65	5.69	0.23	5.69
16,059.00	90.53	181.95	7,128.01	-9,761.06	-1,686.70	14,550,424.84	1,741,287.26	40.0644998	-104.6394744	9,766.60	0.22	0.04	-0.21
16,149.00	90.97	183.93	7,126.83	-9,850.93	-1,691.32	14,550,334.96	1,741,283.01	40.0642530	-104.6394908	9,856.48	2.25	0.49	2.20
16,238.00	90.34	179.41	7,125.81	-9,939.86	-1,693.91	14,550,246.01	1,741,280.79	40.0640088	-104.6395001	9,945.42	5.13	-0.71	-5.08
16,328.00	90.01	177.06	7,125.54	-10,029.81	-1,691.14	14,550,156.07	1,741,283.93	40.0637618	-104.6394902	10,035.36	2.64	-0.37	-2.61
16,418.00	89.46	179.68	7,125.95	-10,119.77	-1,688.58	14,550,066.13	1,741,286.86	40.0635147	-104.6394810	10,125.31	2.97	-0.61	2.91
16,507.00	90.06	179.60	7,126.33	-10,208.76	-1,688.02	14,549,977.14	1,741,287.79	40.0632703	-104.6394790	10,214.30	0.68	0.67	-0.09
16,597.00	88.72	178.27	7,127.28	-10,298.74	-1,686.35	14,549,887.17	1,741,289.83	40.0630233	-104.6394730	10,304.27	2.10	-1.49	-1.48
16,686.00	89.69	180.85	7,128.52	-10,387.72	-1,685.66	14,549,798.19	1,741,290.88	40.0627789	-104.6394705	10,393.25	3.10	1.09	2.90



# Survey Report

<b>Company:</b>	Occidental Petroleum	<b>Local Co-ordinate Reference:</b>	Well Labrisa 35-1HZ
<b>Project:</b>	Weld County, CO (UTM-NAD83)	<b>TVD Reference:</b>	4970' GL + 26' KB @ 4996.00usft
<b>Site:</b>	2N-65W-35 ( Labrisa Pad )	<b>MD Reference:</b>	4970' GL + 26' KB @ 4996.00usft
<b>Well:</b>	Labrisa 35-1HZ	<b>North Reference:</b>	True
<b>Wellbore:</b>	OH	<b>Survey Calculation Method:</b>	Minimum Curvature
<b>Design:</b>	OH	<b>Database:</b>	.Total Directional Production DB

Survey													
Measured Depth (usft)	INC (°)	AZI (°)	Vertical Depth (usft)	Local Coordinates		Map Coordinates		Geo Coordinates		Vertical Section (usft)	Dogleg Rate (°/100usft)	Build Rate (°/100usft)	Turn Rate (°/100usft)
				+N/-S (usft)	+E/-W (usft)	Northing (usft)	Easting (usft)	Latitude (°)	Longituge (°)				
16,776.00	89.67	180.90	7,129.02	-10,477.71	-1,687.04	14,549,708.20	1,741,289.88	40.0625318	-104.6394754	10,483.24	0.06	-0.02	0.06
16,866.00	89.46	180.92	7,129.71	-10,567.69	-1,688.47	14,549,618.21	1,741,288.82	40.0622847	-104.6394805	10,573.23	0.23	-0.23	0.02
16,955.00	91.20	181.33	7,129.19	-10,656.67	-1,690.21	14,549,529.22	1,741,287.44	40.0620403	-104.6394867	10,662.22	2.01	1.96	0.46
17,045.00	91.21	181.44	7,127.30	-10,746.62	-1,692.39	14,549,439.26	1,741,285.63	40.0617933	-104.6394944	10,752.18	0.12	0.01	0.12
17,135.00	91.19	180.81	7,125.42	-10,836.59	-1,694.16	14,549,349.29	1,741,284.24	40.0615462	-104.6395007	10,842.15	0.70	-0.02	-0.70
17,224.00	91.19	180.28	7,123.57	-10,925.56	-1,695.00	14,549,260.31	1,741,283.76	40.0613019	-104.6395037	10,931.12	0.60	0.00	-0.60
17,314.00	90.24	178.70	7,122.44	-11,015.55	-1,694.20	14,549,170.33	1,741,284.93	40.0610548	-104.6395009	11,021.11	2.05	-1.06	-1.76
17,404.00	90.62	179.47	7,121.77	-11,105.53	-1,692.76	14,549,080.35	1,741,286.74	40.0608077	-104.6394957	11,111.09	0.95	0.42	0.86
17,493.00	89.41	176.13	7,121.75	-11,194.45	-1,689.35	14,548,991.45	1,741,290.52	40.0605635	-104.6394835	11,199.99	3.99	-1.36	-3.75
17,583.00	90.35	178.56	7,121.93	-11,284.35	-1,685.18	14,548,901.57	1,741,295.06	40.0603166	-104.6394685	11,289.88	2.89	1.04	2.70
17,672.00	90.92	181.18	7,120.95	-11,373.34	-1,684.98	14,548,812.59	1,741,295.63	40.0600723	-104.6394678	11,378.86	3.01	0.64	2.94
17,762.00	91.30	181.01	7,119.20	-11,463.30	-1,686.70	14,548,722.61	1,741,294.28	40.0598252	-104.6394739	11,468.83	0.46	0.42	-0.19
17,852.00	91.56	180.94	7,116.96	-11,553.26	-1,688.23	14,548,632.65	1,741,293.12	40.0595782	-104.6394794	11,558.80	0.30	0.29	-0.08
17,941.00	88.84	182.23	7,116.65	-11,642.22	-1,690.69	14,548,543.69	1,741,291.02	40.0593339	-104.6394881	11,647.76	3.38	-3.06	1.45
18,018.00	89.41	181.56	7,117.82	-11,719.16	-1,693.23	14,548,466.73	1,741,288.79	40.0591226	-104.6394972	11,724.71	1.14	0.74	-0.87
Last Survey 18018.00 'MD													
18,072.00	89.41	181.56	7,118.38	-11,773.14	-1,694.70	14,548,412.74	1,741,287.55	40.0589743	-104.6395025	11,778.70	0.00	0.00	0.00
BHL - PTB 18072.00 'MD ( 88' FSL - 274' FWL ) Sec 11													

Design Annotations					
Measured Depth (usft)	Vertical Depth (usft)	Local Coordinates			
		+N/-S (usft)	+E/-W (usft)	Comment	
100.00	100.00	-0.35	-0.28	SHL 1387' FSL & 1944' FWL Sec 35	
7,686.18	7,116.60	-1,391.96	-1,629.64	Cross Section Line 7686.18 'MD ( 0' FNL - 304' FWL ) Sec 02	
7,761.22	7,123.25	-1,466.63	-1,632.01	Cross Nio Hardline 7761.22 'MD ( 75' FNL - 302 FWL ) Sec 02	
12,888.58	7,128.11	-6,591.62	-1,684.15	Cross Section Line 12888.58 'MD ( 0' FNL - 287' FWL ) Sec 11	
18,018.00	7,117.82	-11,719.16	-1,693.23	Last Survey 18018.00 'MD	
18,072.00	7,118.38	-11,773.14	-1,694.70	BHL - PTB 18072.00 'MD ( 88' FSL - 274' FWL ) Sec 11	

Checked By: _____	Approved By: _____	Date: _____
-------------------	--------------------	-------------