



1:1200

RWD

MD Log

Wave Propagation Resistivity

Country : United States  
Field : Wattenberg  
Location : 40.0913050  
Well : Labrisa 35-1HZ  
Company : Occidental Petroleum  
Rig : Precision Drilling 562

Company : Occidental Petroleum  
Rig : Precision Drilling 562  
Well : Labrisa 35-1HZ  
Field : Wattenberg  
County/Parish : Weld  
State/Province : Colorado  
Country : United States  
Well ID : 05-123-52236

LOCATION

Latitude : 40.0913050  
Longitude : -104.6334460  
Labrisa Pad 2N-65W-35  
Sect: 2N Twp: 65W Range: 35

Other Services:

Permanent Datum : MSL  
Log Measured From : RKB  
Elevation: 4996

Elev. KB : 26  
DF : 26  
GL/WD : 4970

Depth Logged : 2149  
Date Logged : 01/29/2024  
Total Depth MD : 18072.00  
Spud Date : 01/27/2024  
to : 6816  
to : 01/30/2024  
TVD : 7118.4

FINAL PRINT

Job Number:  
AEP-RM-240179

Run		Borehole Record (MD) Size From	To	Run		Borehole Record (MD) Size From	To
1	7.875	2149	18072				
		Size	Casing Record (MD) Weight From			To	
		9 5/8	0			2149	

DISCLAIMER

Altitude Energy Partners. does not guarantee the accuracy or correctness of interpretations in or from this log.  
Since all interpretations are opinions based on measurements Altitude Energy Partners shall under no circumstance  
be responsible for consequential damages or and other loss, cost or expense incurred or sustained in connection  
with the use of such interpretations.

LOGGING SUMMARY

Log Run	1			
Bit Run	1			
Hole Size (in)	7.88			
Sensor Suite	WPR			

Measured Depth

In Hole From	2149			
In Hole To	18072			
Log From	2149.00			
Log To	6816.00			

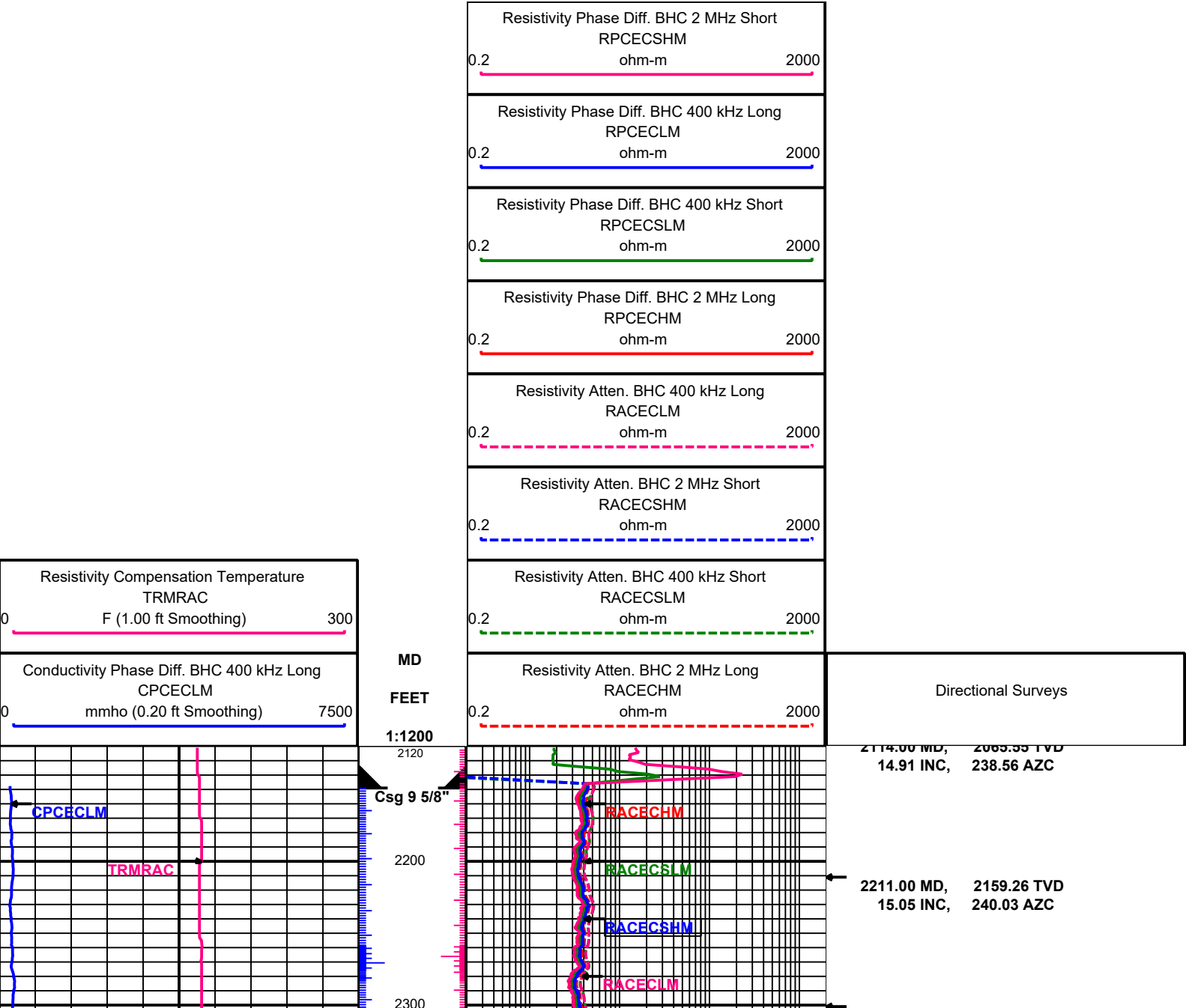
Date/Time

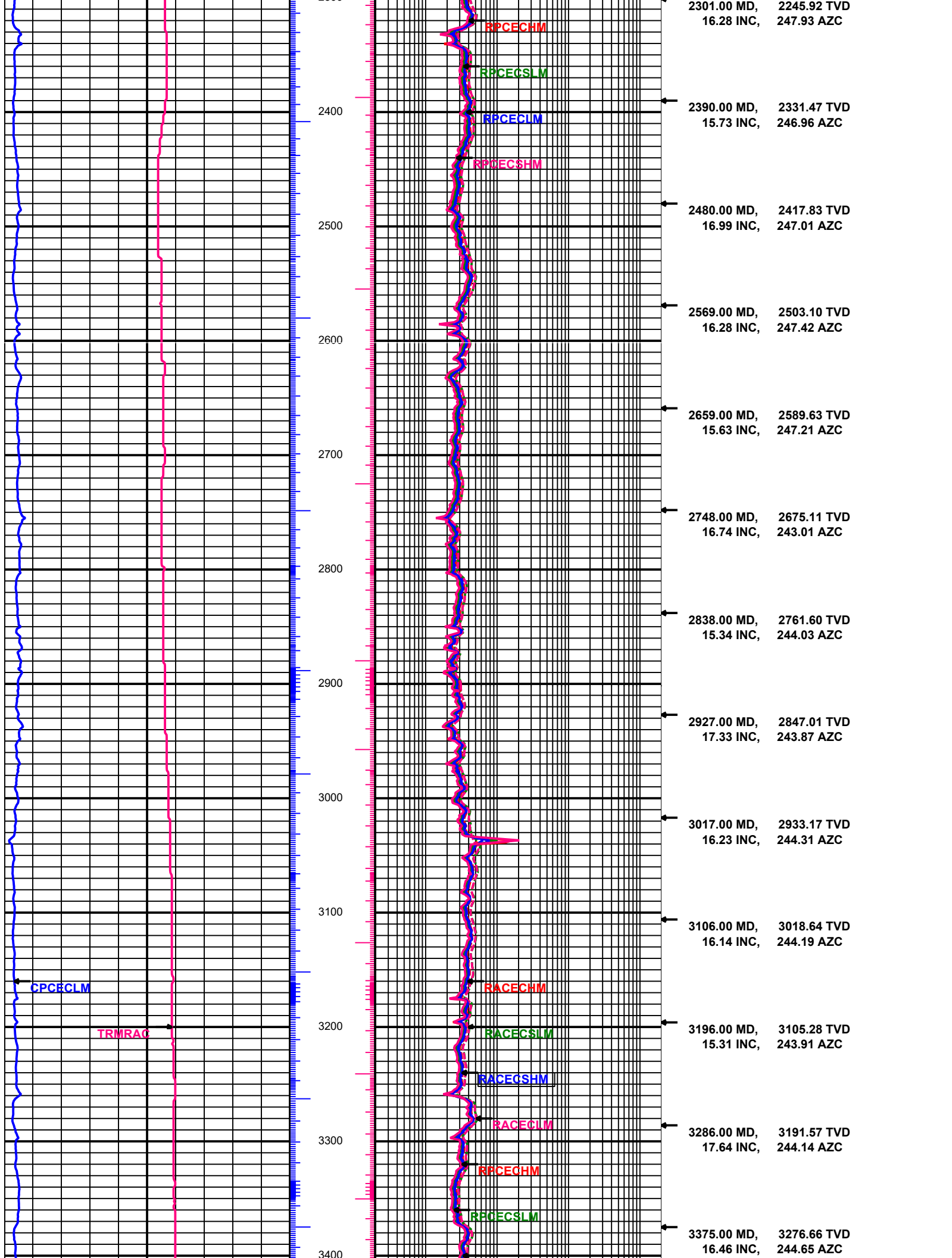
In Hole Date	2024-01-29			
In Hole Time	05:26:43			
Out Hole Date	2024-01-30			
Out Hole Time	18:30:30			
Begin Log Date	2024-01-29			
Begin Log Time	13:23:19			
End Log Date	2024-01-30			
End Log Time	07:17:54			

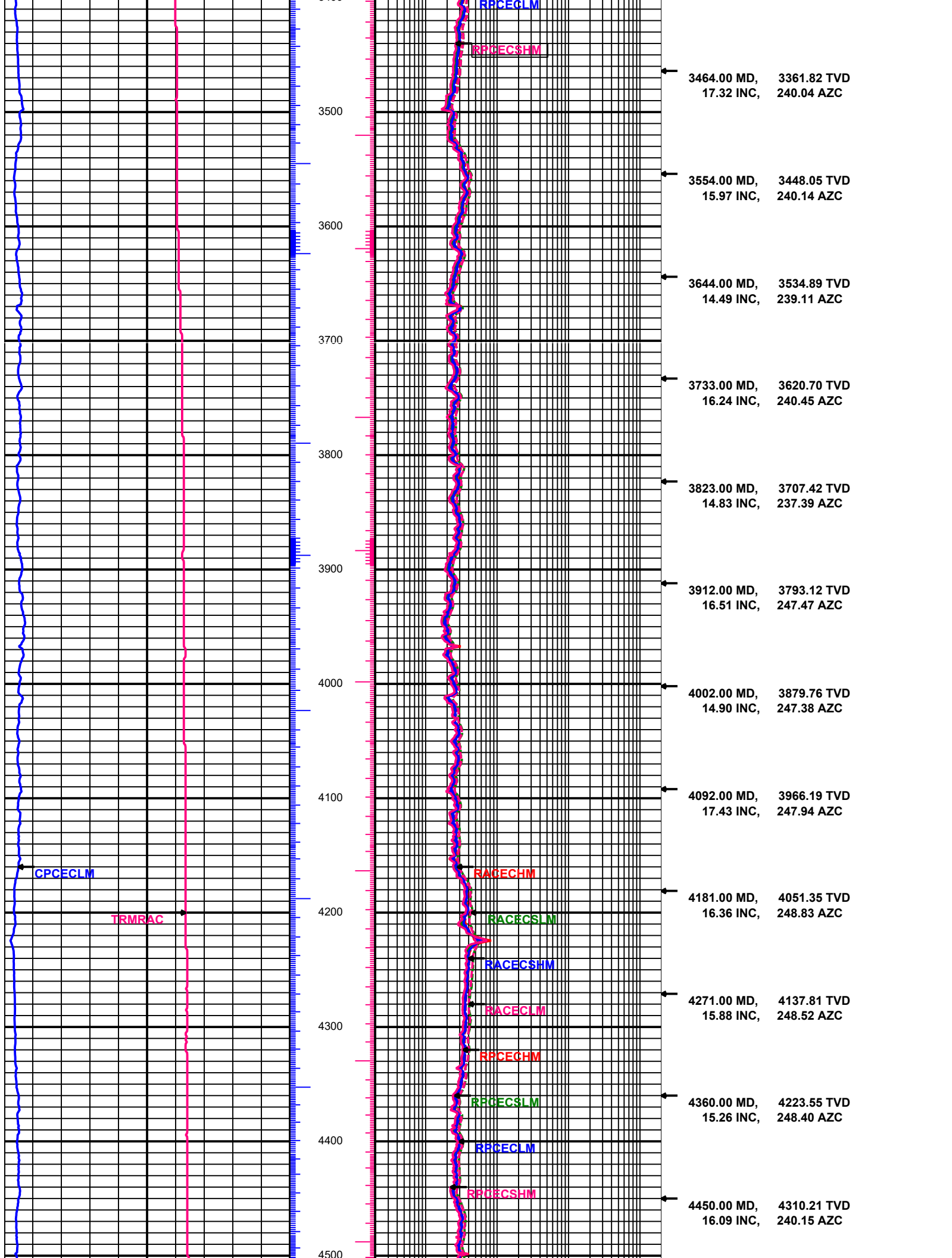
LWD Engineer	Brandon Snyder				
Oil Company Rep	James Gober				
DRILLING FLUID SUMMARY					
Mud Type	OBM				
Density (lb/gal)	9.50				
Funnel Viscosity	64				
Plastic Viscosity	18				
Chlorides	45000				
Oil/Water Ratio	69.71 / 30.29				
Maximum Circ Temp (F)	126				
CORRECTIONS					
Log Run	1				
Bit Run	1				
Start Date/Time	2024-01-29 05:26:44				
Start Depth (ft)	0				
End Date/Time	2024-01-30 18:30:29				
End Depth (ft)	18072				
Gamma Ray Corrections					
Collar Correction	2.228				
Mud Density (lb/gal)	12				
Mud Correction	1				
Calibration	1.35				
%K	0				
WPR Corrections					
Effective Hole Diam (in)	7.875				
Surface Rm (ohm-m)	1000				
Surface Mud Temp (F)	126				
Bottom Hole Circ Temp (F)	215.6				
Rm @ BHT	596.941				
EQUIPMENT					
Log Run	1				
Bit Run	1				
Start Date/Time	2024-01-29 05:26:43				
Start Depth (ft)	2149				
End Date/Time	2024-01-30 18:30:30				
End Depth (ft)	18072				
Serial Numbers					
Surface Gear					
Flow Sub					
Pulser					

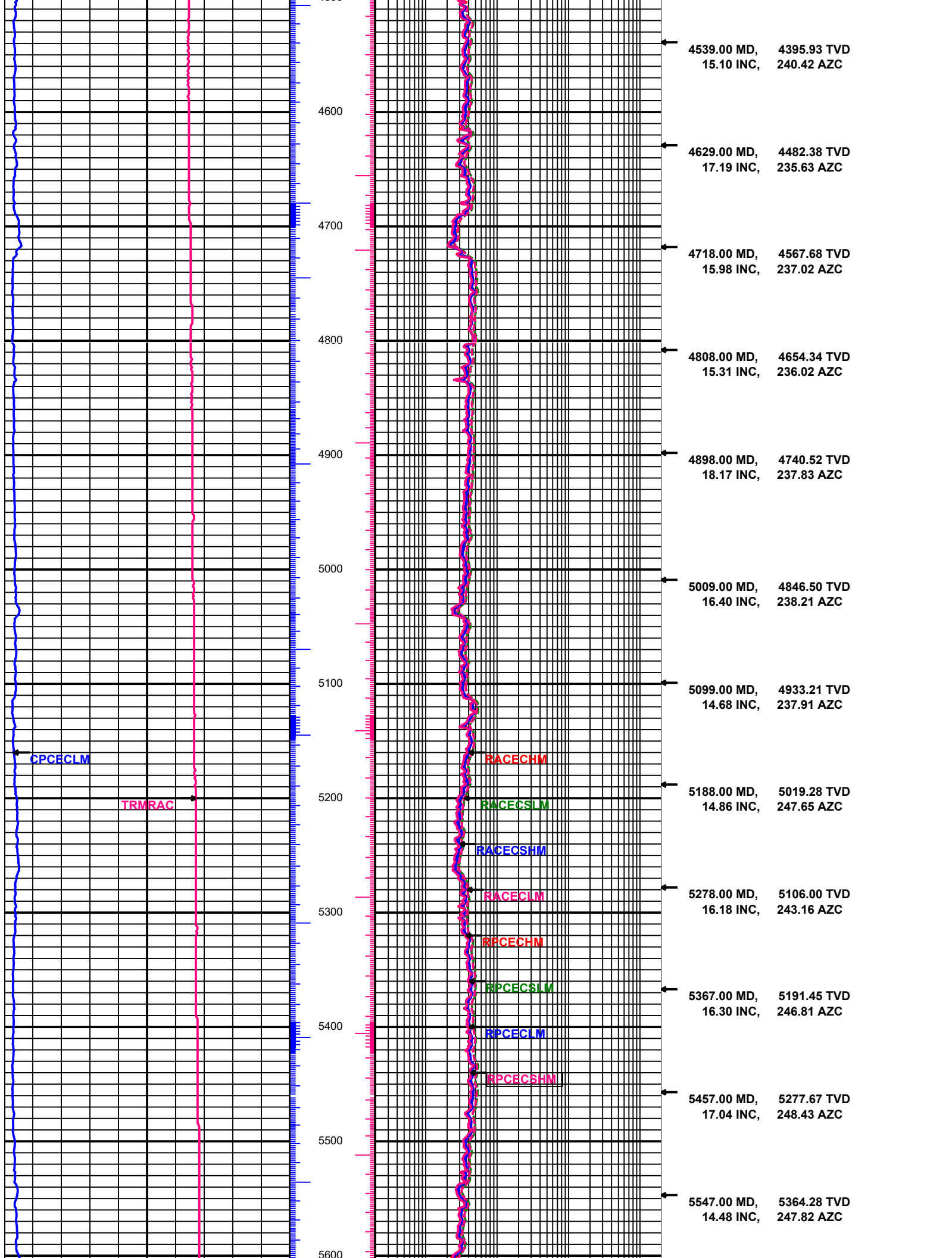
Battery 1					
Battery 2					
Turbine Alternator					
Directional Sensor					
Gamma Sensor					
WPR Sensor	18				
Vibration Sensor					

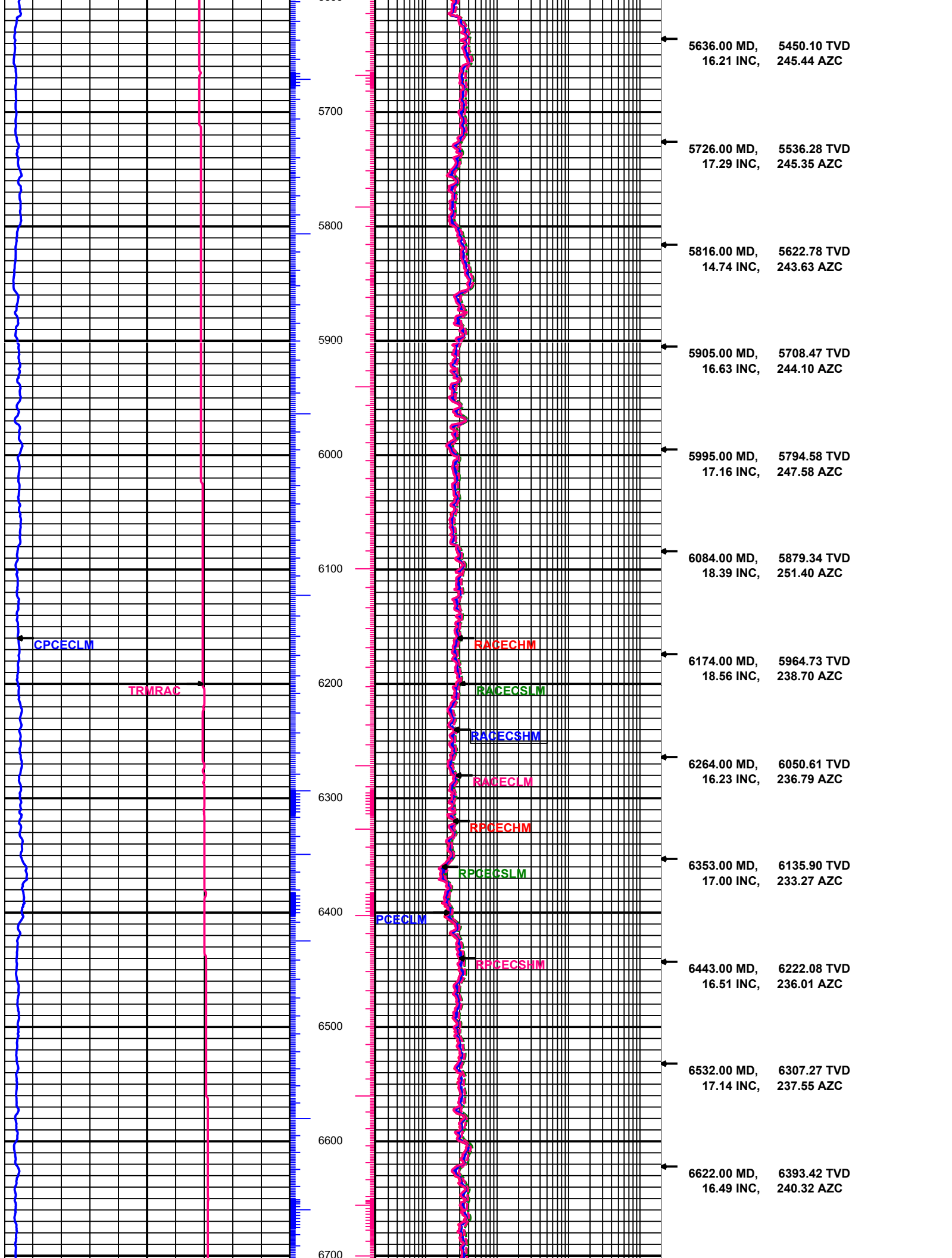
Sensor Offsets To Bit					
Directional (ft)					
Gamma Ray (ft)					
WPR (ft)	11255.22				
PWD (ft)					
Vibration (ft)					

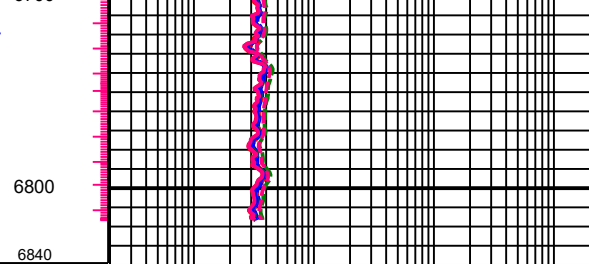
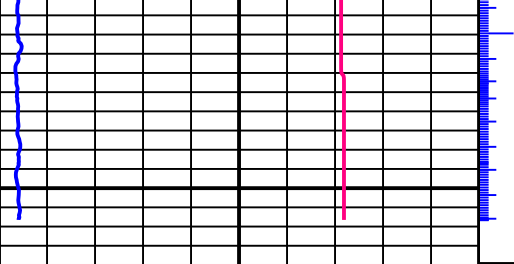






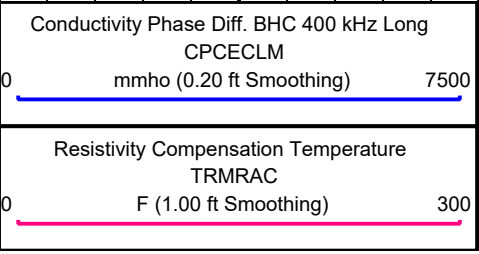




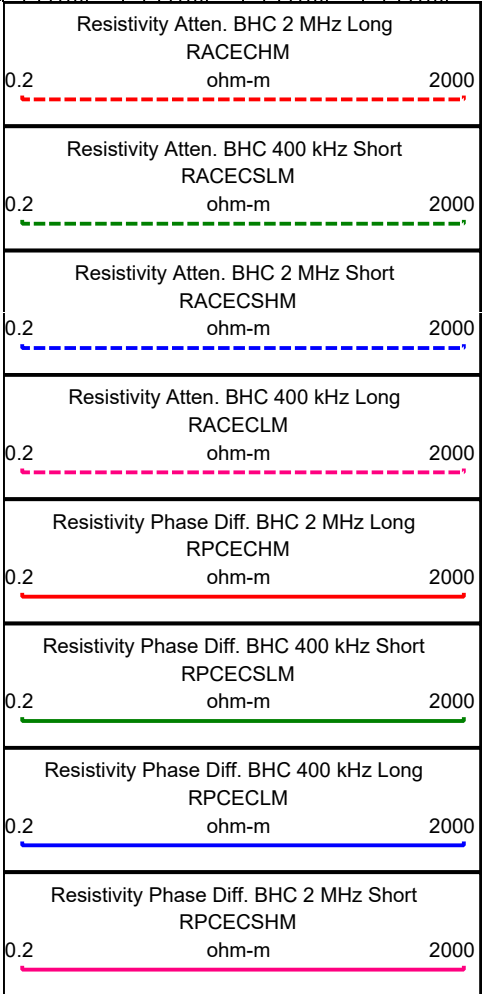


6712.00 MD, 6479.73 TVD  
16.43 INC, 238.95 AZC

6801.00 MD, 6564.73 TVD  
18.34 INC, 220.88 AZC



1:1200  
FEET  
MD



Directional Surveys