

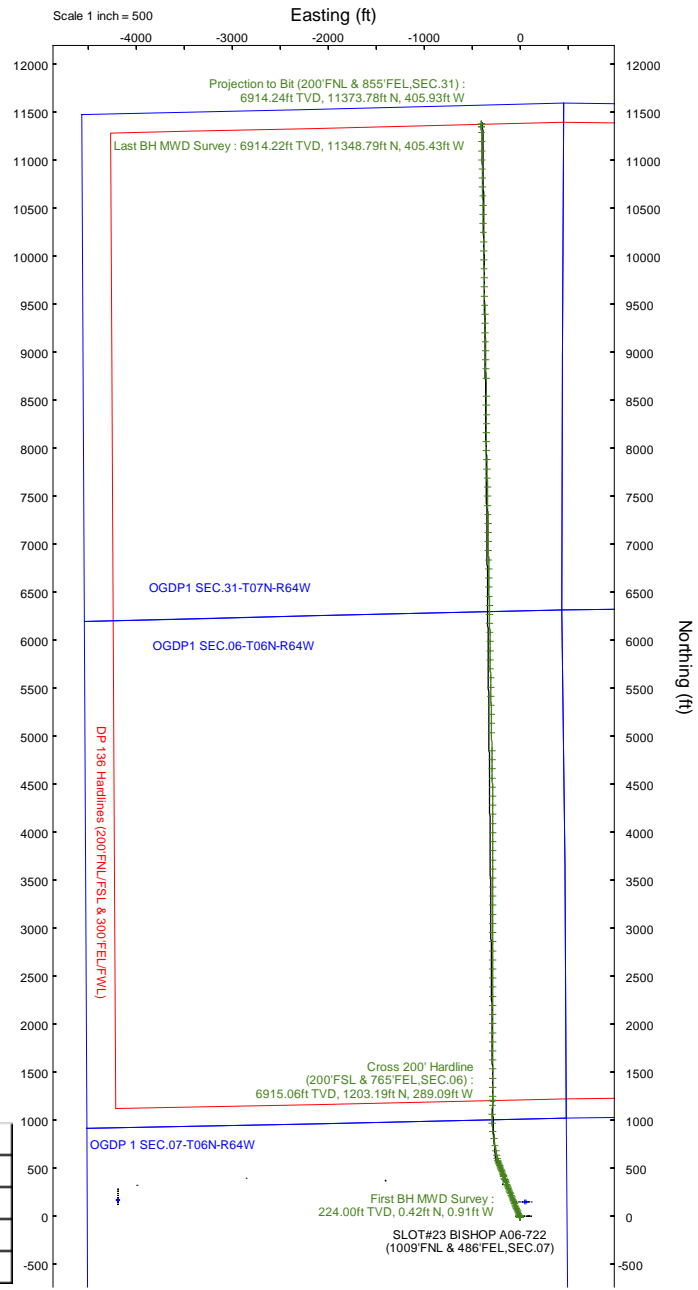
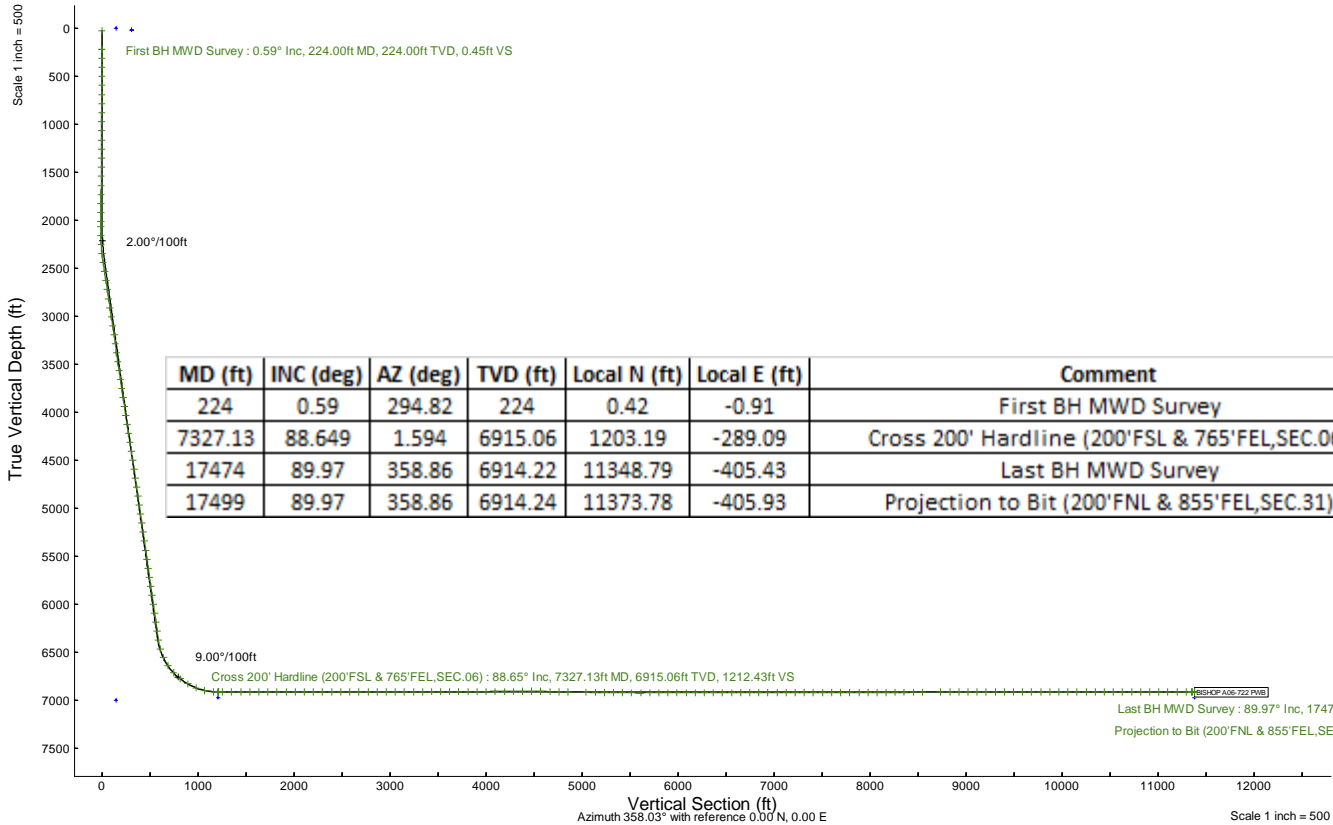
NOBLE ENERGY, INC

Location: COLORADO Slot: SLOT#23 BISHOP A06-722 (1009'FNL & 486'FEL,SEC.07)
 Field: WELD COUNTY (NOBLE NAD 83 GRID) Well: BISHOP A06-722
 Facility: SEC.07-T06N-R64W Wellbore: BISHOP A06-722 PWB

Plot reference wellpath is BISHOP A06-722 (REV-D.0) PWP
 Grid System: NAD83 / Lambert Colorado SP, Northern Zone (501), US feet
 True vertical depths are referenced to RIG (4744'GL+29'KB@4773'RKB) (RKB)
 North Reference: Grid north
 Reference wellpath measured depths are referenced to RIG (4744'GL+29'KB@4773'RKB) (RKB)
 Scale: True distance
 RIG (4744'GL+29'KB@4773'RKB) (RKB) to Mean Sea Level: 4773 feet
 Coordinates are in feet referenced to Slot
 Mean Sea Level to Ground level (At Slot: SLOT#23 BISHOP A06-722 (1009'FNL & 486'FEL,SEC.07)): 0 feet
 Depths are in feet
 Offset wellpath MDs are referenced to each path's default MD datum
 Created by: matsam01 on 2024-04-30; Database: WA_Denver

Location Information

Facility Name		Grid East (US ft)	Grid North (US ft)	Latitude	Longitude	
SEC.07-T06N-R64W		3254380.716	1428262.611	40°30'19.3680"N	104°35'6.7200"W	
Slot	Local N (ft)	Local E (ft)	Grid East (US ft)	Grid North (US ft)	Latitude	Longitude
SLOT#23 BISHOP A06-722 (1009'FNL & 486'FEL,SEC.07)	-149.64	-61.03	3254319.689	1428112.973	40°30'17.8956"N	104°35'7.5300"W
RIG (4744'GL+29'KB@4773'RKB) (RKB) to Ground level (At Slot: SLOT#23 BISHOP A06-722 (1009'FNL & 486'FEL,SEC.07))						4773ft
Mean Sea Level to Ground level (At Slot: SLOT#23 BISHOP A06-722 (1009'FNL & 486'FEL,SEC.07))						0ft
RIG (4744'GL+29'KB@4773'RKB) (RKB) to Mean Sea Level						4773ft



REFERENCE WELLPATH IDENTIFICATION

Operator	NOBLE ENERGY, INC	Well	BISHOP A06-722
Field	WELD COUNTY (NOBLE NAD 83 GRID)	API/Legal	05-123-52065
Facility	SEC.07-T06N-R64W	Wellbore	BISHOP A06-722 AWB
Slot	SLOT#23 BISHOP A06-722 (1009'FNL & 486'FEL,SEC.07)		

REPORT SETUP INFORMATION

Projection System	NAD83 / Lambert Colorado SP, Northern Zone (501), US feet	Software System	WellArchitect® 6.0
North Reference	Grid	User	Martsam01
Scale	0.999967	Report Generated	4/25/2024 at 11:24:40 PM
Convergence at slot	0.59° East	Database	WA_Denver

WELLPATH LOCATION

	Local coordinates		Grid coordinates		Geographic coordinates	
	North[ft]	East[ft]	Easting[US ft]	Northing[US ft]	Latitude	Longitude
Slot Location	-149.64	-61.03	3254319.69	1428112.97	40.5049710°	-104.5854250°
Facility Reference Pt			3254380.72	1428262.61	40.5053800°	-104.5852000°
Field Reference Pt			3000000.00	4454105.15	48.7761986°	-105.5000000°

WELLPATH DATUM

Calculation method	Minimum curvature	RIG (4744'GL+29'KB@4773'RKB) (RKB) to Facility Vertical Datum	4773.00ft
Horizontal Reference Pt	Slot	RIG (4744'GL+29'KB@4773'RKB) (RKB) to Mean Sea Level	4773.00ft
Vertical Reference Pt	RIG (4744'GL+29'KB@4773'RKB) (RKB)	RIG (4744'GL+29'KB@4773'RKB) (RKB) to Ground Level at Slot (SLOT#23 BISHOP A06-722 (1009'FNL & 486'FEL,SEC.07))	4773.00ft
MD Reference Pt	RIG (4744'GL+29'KB@4773'RKB) (RKB)	Section Origin	N 0.00, E 0.00 ft
Field Vertical Reference	Mean Sea Level	Section Azimuth	358.03°

REFERENCE WELLPATH IDENTIFICATION			
Operator	NOBLE ENERGY, INC	Well	BISHOP A06-722
Field	WELD COUNTY (NOBLE NAD 83 GRID)	API/Legal	05-123-52065
Facility	SEC.07-T06N-R64W	Wellbore	BISHOP A06-722 AWB
Slot	SLOT#23 BISHOP A06-722 (1009'FNL & 486'FEL,SEC.07)		

WELLPATH DATA (187 stations) † = interpolated, ‡ = extrapolated station

MD [ft]	Inclination [°]	Azimuth [°]	TVD [ft]	Vert Sect [ft]	North [ft]	East [ft]	Latitude	Longitude	DLS [°/100ft]	Comments
0.00†	0.000	294.820	0.00	0.00	0.00	0.00	40.5049710	-104.5854250	0.00	
29.00	0.000	294.820	29.00	0.00	0.00	0.00	40.5049710	-104.5854250	0.00	
224.00	0.590	294.820	224.00	0.45	0.42	-0.91	40.5049722	-104.5854283	0.30	First BH MWD Survey
314.00	0.570	263.430	313.99	0.63	0.56	-1.78	40.5049726	-104.5854314	0.35	
408.00	0.500	267.280	407.99	0.58	0.49	-2.65	40.5049724	-104.5854345	0.08	
503.00	0.440	274.210	502.98	0.62	0.50	-3.43	40.5049725	-104.5854373	0.09	
598.00	0.460	262.650	597.98	0.62	0.48	-4.17	40.5049724	-104.5854400	0.10	
692.00	0.770	265.620	691.98	0.56	0.38	-5.17	40.5049722	-104.5854436	0.33	
787.00	1.200	257.810	786.96	0.36	0.12	-6.78	40.5049715	-104.5854494	0.47	
882.00	0.770	196.600	881.95	-0.43	-0.70	-7.94	40.5049693	-104.5854536	1.13	
976.00	1.400	166.470	975.93	-2.15	-2.42	-7.85	40.5049646	-104.5854533	0.88	
1071.00	0.900	105.920	1070.92	-3.52	-3.76	-6.86	40.5049609	-104.5854498	1.30	
1166.00	1.240	106.830	1165.90	-4.08	-4.26	-5.16	40.5049595	-104.5854437	0.36	
1260.00	1.420	107.680	1259.88	-4.80	-4.91	-3.08	40.5049576	-104.5854362	0.19	
1355.00	0.280	103.520	1354.86	-5.25	-5.32	-1.73	40.5049565	-104.5854314	1.20	
1450.00	0.310	138.350	1449.86	-5.51	-5.56	-1.33	40.5049558	-104.5854300	0.19	
1544.00	0.250	173.570	1543.86	-5.91	-5.96	-1.14	40.5049547	-104.5854293	0.19	
1639.00	0.420	163.490	1638.86	-6.46	-6.50	-1.02	40.5049532	-104.5854289	0.19	
1733.00	0.490	177.440	1732.86	-7.19	-7.23	-0.90	40.5049512	-104.5854285	0.14	
1828.00	1.020	178.030	1827.85	-8.45	-8.48	-0.86	40.5049477	-104.5854284	0.56	
1923.00	1.030	189.730	1922.83	-10.13	-10.17	-0.97	40.5049431	-104.5854289	0.22	
2017.00	0.760	189.210	2016.82	-11.57	-11.61	-1.21	40.5049392	-104.5854298	0.29	
2067.00	0.820	188.730	2066.82	-12.24	-12.30	-1.32	40.5049373	-104.5854302	0.12	
2162.00	2.080	336.770	2161.80	-11.30	-11.38	-2.10	40.5049398	-104.5854330	2.96	
2257.00	4.030	336.510	2256.66	-6.59	-6.74	-4.11	40.5049526	-104.5854400	2.05	
2351.00	6.950	336.090	2350.22	1.76	1.49	-7.74	40.5049753	-104.5854528	3.11	
2446.00	9.060	336.920	2444.29	14.07	13.63	-13.00	40.5050088	-104.5854712	2.22	
2541.00	9.280	337.920	2538.07	28.24	27.61	-18.81	40.5050473	-104.5854916	0.29	
2635.00	9.070	337.890	2630.87	42.31	41.50	-24.45	40.5050856	-104.5855114	0.22	
2730.00	9.200	337.960	2724.67	56.48	55.47	-30.12	40.5051241	-104.5855312	0.14	
2825.00	9.150	338.140	2818.45	70.71	69.52	-35.78	40.5051628	-104.5855511	0.06	
2920.00	9.310	337.670	2912.22	85.02	83.64	-41.51	40.5052017	-104.5855712	0.19	
3014.00	9.200	338.450	3005.00	99.23	97.66	-47.16	40.5052404	-104.5855910	0.18	
3109.00	9.150	340.180	3098.78	113.58	111.83	-52.51	40.5052794	-104.5856097	0.30	
3204.00	9.170	335.830	3192.57	127.77	125.85	-58.17	40.5053181	-104.5856295	0.73	
3298.00	7.260	338.840	3285.60	140.32	138.22	-63.38	40.5053522	-104.5856478	2.08	
3393.00	8.260	338.520	3379.73	152.42	150.17	-68.05	40.5053851	-104.5856641	1.05	
3488.00	9.120	338.090	3473.64	165.93	163.50	-73.36	40.5054218	-104.5856827	0.91	
3583.00	9.000	338.040	3567.45	179.99	177.38	-78.94	40.5054601	-104.5857023	0.13	
3677.00	8.680	337.890	3660.34	193.56	190.77	-84.36	40.5054970	-104.5857213	0.34	
3772.00	9.230	337.600	3754.18	207.43	204.46	-89.97	40.5055347	-104.5857409	0.58	
3867.00	9.350	337.730	3847.93	221.81	218.64	-95.79	40.5055738	-104.5857613	0.13	
3962.00	9.390	337.610	3941.67	236.31	232.95	-101.67	40.5056133	-104.5857819	0.05	
4056.00	9.430	338.250	4034.40	250.74	247.19	-107.44	40.5056525	-104.5858022	0.12	
4151.00	9.230	338.580	4128.14	265.25	261.51	-113.11	40.5056920	-104.5858220	0.22	

REFERENCE WELLPATH IDENTIFICATION			
Operator	NOBLE ENERGY, INC	Well	BISHOP A06-722
Field	WELD COUNTY (NOBLE NAD 83 GRID)	API/Legal	05-123-52065
Facility	SEC.07-T06N-R64W	Wellbore	BISHOP A06-722 AWB
Slot	SLOT#23 BISHOP A06-722 (1009'FNL & 486'FEL,SEC.07)		

WELLPATH DATA (187 stations) † = interpolated, ‡ = extrapolated station

MD [ft]	Inclination [°]	Azimuth [°]	TVD [ft]	Vert Sect [ft]	North [ft]	East [ft]	Latitude	Longitude	DLS [°/100ft]	Comments
4246.00	9.380	338.890	4221.89	279.75	275.83	-118.68	40.5057314	-104.5858415	0.17	
4341.00	9.030	338.360	4315.67	294.08	289.98	-124.22	40.5057704	-104.5858609	0.38	
4435.00	9.110	338.190	4408.50	308.03	303.74	-129.70	40.5058084	-104.5858801	0.09	
4530.00	9.320	338.220	4502.27	322.34	317.87	-135.35	40.5058473	-104.5858999	0.22	
4625.00	9.270	338.260	4596.02	336.78	332.12	-141.04	40.5058866	-104.5859198	0.05	
4719.00	8.620	338.340	4688.88	350.54	345.70	-146.45	40.5059240	-104.5859388	0.69	
4814.00	8.800	338.750	4782.78	364.10	359.09	-151.71	40.5059609	-104.5859572	0.20	
4909.00	8.650	338.330	4876.68	377.69	372.50	-156.98	40.5059979	-104.5859757	0.17	
5004.00	8.450	338.190	4970.63	390.98	385.62	-162.21	40.5060340	-104.5859940	0.21	
5098.00	9.150	338.180	5063.52	404.51	398.97	-167.55	40.5060708	-104.5860127	0.74	
5193.00	8.100	341.330	5157.45	418.02	412.33	-172.50	40.5061076	-104.5860300	1.21	
5288.00	8.490	347.380	5251.45	431.32	425.51	-176.18	40.5061439	-104.5860427	1.01	
5382.00	8.710	338.260	5344.40	444.84	438.89	-180.33	40.5061807	-104.5860572	1.47	
5477.00	8.580	338.650	5438.32	458.30	452.17	-185.58	40.5062173	-104.5860755	0.15	
5572.00	8.510	338.550	5532.27	471.61	465.32	-190.73	40.5062536	-104.5860936	0.08	
5667.00	8.480	338.210	5626.22	484.83	478.36	-195.90	40.5062895	-104.5861117	0.06	
5762.00	8.560	338.410	5720.18	498.08	491.44	-201.10	40.5063256	-104.5861299	0.09	
5857.00	8.470	338.290	5814.13	511.32	504.52	-206.29	40.5063616	-104.5861481	0.10	
5951.00	8.430	338.520	5907.11	524.33	517.36	-211.37	40.5063970	-104.5861659	0.06	
6046.00	8.510	338.380	6001.07	537.52	530.37	-216.51	40.5064328	-104.5861839	0.09	
6141.00	8.500	338.540	6095.03	550.75	543.44	-221.67	40.5064689	-104.5862019	0.03	
6236.00	8.540	338.410	6188.98	564.02	556.54	-226.83	40.5065049	-104.5862200	0.05	
6330.00	7.820	339.130	6282.02	576.64	569.00	-231.68	40.5065393	-104.5862370	0.77	
6425.00	8.930	338.660	6376.01	589.71	581.91	-236.67	40.5065749	-104.5862544	1.17	
6520.00	16.520	348.910	6468.62	610.04	602.06	-241.96	40.5066303	-104.5862727	8.30	
6615.00	24.470	351.940	6557.54	642.99	634.85	-247.32	40.5067205	-104.5862908	8.44	
6710.00	34.030	349.550	6640.33	688.96	680.58	-254.92	40.5068462	-104.5863164	10.14	
6804.00	43.030	349.510	6713.79	746.81	738.10	-265.55	40.5070044	-104.5863525	9.57	
6899.00	51.540	351.850	6778.18	815.97	806.92	-276.75	40.5071936	-104.5863902	9.14	
6994.00	61.250	353.630	6830.70	894.67	885.32	-286.66	40.5074091	-104.5864230	10.34	
7089.00	67.780	357.800	6871.56	980.29	970.77	-292.98	40.5076438	-104.5864425	7.93	
7183.00	76.860	1.190	6900.09	1069.71	1060.22	-293.70	40.5078893	-104.5864418	10.25	
7278.00	87.170	2.360	6913.27	1163.45	1154.13	-290.78	40.5081470	-104.5864278	10.92	
7327.13†	88.649	1.594	6915.06	1212.43	1203.19	-289.09	40.5082816	-104.5864199	3.39	Cross 200' Hardline (200'FSL & 765'FEL,SEC.06)
7330.00†	88.735	1.549	6915.13	1215.30	1206.06	-289.01	40.5082895	-104.5864195	3.39	Shallowest MD for Perf
7373.00	90.030	0.880	6915.59	1258.23	1249.05	-288.10	40.5084074	-104.5864147	3.39	
7468.00	90.250	359.830	6915.36	1353.15	1344.04	-287.51	40.5086681	-104.5864090	1.13	
7562.00	90.030	0.010	6915.13	1447.10	1438.04	-287.64	40.5089261	-104.5864060	0.30	
7657.00	90.310	359.930	6914.85	1542.04	1533.04	-287.69	40.5091869	-104.5864027	0.31	
7752.00	90.060	359.790	6914.54	1636.99	1628.04	-287.92	40.5094476	-104.5864000	0.30	
7847.00	89.970	359.940	6914.52	1731.94	1723.04	-288.15	40.5097084	-104.5863973	0.18	
7941.00	90.000	359.940	6914.54	1825.89	1817.04	-288.24	40.5099664	-104.5863941	0.03	
8036.00	90.030	0.010	6914.52	1920.83	1912.04	-288.29	40.5102271	-104.5863908	0.08	
8131.00	90.280	0.250	6914.26	2015.77	2007.04	-288.07	40.5104879	-104.5863865	0.36	
8226.00	90.120	0.130	6913.93	2110.70	2102.04	-287.75	40.5107486	-104.5863818	0.21	

REFERENCE WELLPATH IDENTIFICATION			
Operator	NOBLE ENERGY, INC	Well	BISHOP A06-722
Field	WELD COUNTY (NOBLE NAD 83 GRID)	API/Legal	05-123-52065
Facility	SEC.07-T06N-R64W	Wellbore	BISHOP A06-722 AWB
Slot	SLOT#23 BISHOP A06-722 (1009'FNL & 486'FEL,SEC.07)		

WELLPATH DATA (187 stations)

MD [ft]	Inclination [°]	Azimuth [°]	TVD [ft]	Vert Sect [ft]	North [ft]	East [ft]	Latitude	Longitude	DLS [°/100ft]	Comments
8320.00	90.150	359.950	6913.71	2204.64	2196.04	-287.69	40.5110066	-104.5863781	0.19	
8415.00	89.880	359.840	6913.68	2299.59	2291.04	-287.86	40.5112674	-104.5863752	0.31	
8510.00	90.060	359.870	6913.73	2394.54	2386.04	-288.10	40.5115281	-104.5863726	0.19	
8604.00	89.970	359.950	6913.71	2488.49	2480.04	-288.25	40.5117861	-104.5863696	0.13	
8699.00	89.910	0.340	6913.80	2583.43	2575.04	-288.01	40.5120469	-104.5863652	0.42	
8794.00	90.180	359.980	6913.73	2678.36	2670.04	-287.75	40.5123076	-104.5863607	0.47	
8889.00	90.060	0.030	6913.53	2773.31	2765.04	-287.74	40.5125683	-104.5863572	0.14	
8984.00	89.970	0.090	6913.51	2868.25	2860.04	-287.64	40.5128291	-104.5863533	0.11	
9078.00	90.180	0.240	6913.38	2962.18	2954.04	-287.37	40.5130871	-104.5863489	0.27	
9173.00	90.180	0.250	6913.08	3057.11	3049.03	-286.96	40.5133478	-104.5863439	0.01	
9268.00	90.120	359.940	6912.84	3152.05	3144.03	-286.80	40.5136085	-104.5863398	0.33	
9363.00	89.910	0.260	6912.81	3246.98	3239.03	-286.64	40.5138693	-104.5863357	0.40	
9457.00	90.280	0.070	6912.66	3340.92	3333.03	-286.37	40.5141273	-104.5863312	0.44	
9552.00	89.970	359.860	6912.45	3435.86	3428.03	-286.42	40.5143880	-104.5863279	0.39	
9647.00	90.120	0.020	6912.37	3530.81	3523.03	-286.52	40.5146488	-104.5863247	0.23	
9742.00	90.120	0.070	6912.17	3625.75	3618.03	-286.45	40.5149095	-104.5863210	0.05	
9836.00	90.030	359.960	6912.05	3719.69	3712.03	-286.42	40.5151675	-104.5863174	0.15	
9931.00	90.120	0.110	6911.93	3814.64	3807.03	-286.37	40.5154283	-104.5863137	0.18	
10026.00	90.180	0.200	6911.68	3909.57	3902.03	-286.11	40.5156890	-104.5863092	0.11	
10121.00	89.970	359.550	6911.55	4004.52	3997.03	-286.32	40.5159497	-104.5863064	0.72	
10216.00	90.220	359.240	6911.40	4099.49	4092.02	-287.32	40.5162105	-104.5863065	0.42	
10310.00	90.060	359.230	6911.17	4193.47	4186.02	-288.58	40.5164685	-104.5863076	0.17	
10405.00	90.060	359.430	6911.07	4288.45	4281.01	-289.69	40.5167293	-104.5863080	0.21	
10500.00	90.710	359.970	6910.43	4383.40	4376.01	-290.18	40.5169900	-104.5863063	0.89	
10595.00	90.090	359.310	6909.77	4478.36	4471.00	-290.78	40.5172508	-104.5863049	0.95	
10689.00	89.200	359.330	6910.35	4572.33	4564.99	-291.90	40.5175088	-104.5863055	0.95	
10784.00	89.080	359.130	6911.77	4667.30	4659.97	-293.17	40.5177695	-104.5863065	0.25	
10879.00	89.200	359.060	6913.20	4762.28	4754.95	-294.67	40.5180302	-104.5863084	0.15	
10973.00	89.080	358.980	6914.61	4856.25	4848.92	-296.28	40.5182882	-104.5863107	0.15	
11163.00	89.140	358.930	6917.56	5046.20	5038.87	-299.75	40.5188097	-104.5863161	0.04	
11257.00	89.230	359.090	6918.90	5140.18	5132.85	-301.37	40.5190676	-104.5863185	0.20	
11352.00	89.170	359.040	6920.23	5235.16	5227.82	-302.92	40.5193284	-104.5863205	0.08	
11447.00	89.110	358.970	6921.65	5330.13	5322.80	-304.57	40.5195891	-104.5863229	0.10	
11541.00	89.110	358.600	6923.11	5424.11	5416.77	-306.56	40.5198471	-104.5863266	0.39	
11636.00	89.200	358.850	6924.51	5519.09	5511.73	-308.68	40.5201078	-104.5863307	0.28	
11731.00	90.370	359.090	6924.87	5614.08	5606.72	-310.38	40.5203685	-104.5863333	1.26	
11826.00	90.180	359.190	6924.41	5709.06	5701.70	-311.81	40.5206293	-104.5863349	0.23	
11920.00	89.820	359.250	6924.41	5803.04	5795.69	-313.09	40.5208873	-104.5863361	0.39	
12015.00	89.940	359.200	6924.61	5898.02	5890.69	-314.37	40.5211480	-104.5863372	0.14	
12110.00	90.150	358.980	6924.54	5993.00	5985.67	-315.88	40.5214088	-104.5863391	0.32	
12205.00	89.940	359.100	6924.46	6087.99	6080.66	-317.47	40.5216696	-104.5863413	0.25	
12299.00	89.910	358.750	6924.59	6181.97	6174.64	-319.24	40.5219276	-104.5863441	0.37	
12394.00	90.150	358.840	6924.54	6276.97	6269.62	-321.24	40.5221883	-104.5863478	0.27	
12489.00	90.090	358.900	6924.34	6371.96	6364.60	-323.11	40.5224491	-104.5863510	0.09	
12583.00	90.000	358.950	6924.26	6465.94	6458.59	-324.87	40.5227071	-104.5863539	0.11	

REFERENCE WELLPATH IDENTIFICATION			
Operator	NOBLE ENERGY, INC	Well	BISHOP A06-722
Field	WELD COUNTY (NOBLE NAD 83 GRID)	API/Legal	05-123-52065
Facility	SEC.07-T06N-R64W	Wellbore	BISHOP A06-722 AWB
Slot	SLOT#23 BISHOP A06-722 (1009'FNL & 486'FEL,SEC.07)		

WELLPATH DATA (187 stations)

MD [ft]	Inclination [°]	Azimuth [°]	TVD [ft]	Vert Sect [ft]	North [ft]	East [ft]	Latitude	Longitude	DLS [°/100ft]	Comments
12678.00	90.120	359.270	6924.16	6560.93	6553.58	-326.35	40.5229678	-104.5863557	0.36	
12773.00	90.250	359.250	6923.86	6655.90	6648.57	-327.57	40.5232286	-104.5863566	0.14	
12867.00	89.970	359.130	6923.68	6749.88	6742.56	-328.90	40.5234866	-104.5863579	0.32	
12962.00	90.220	358.650	6923.52	6844.87	6837.54	-330.74	40.5237473	-104.5863610	0.57	
13057.00	90.340	358.910	6923.05	6939.86	6932.52	-332.77	40.5240081	-104.5863647	0.30	
13151.00	90.120	359.590	6922.68	7033.84	7026.51	-334.00	40.5242661	-104.5863657	0.76	
13246.00	90.280	359.250	6922.35	7128.81	7121.50	-334.96	40.5245268	-104.5863656	0.40	
13341.00	90.340	359.120	6921.83	7223.79	7216.49	-336.31	40.5247876	-104.5863669	0.15	
13436.00	90.680	359.210	6920.99	7318.77	7311.48	-337.69	40.5250483	-104.5863684	0.37	
13530.00	90.250	358.870	6920.22	7412.75	7405.46	-339.27	40.5253063	-104.5863706	0.58	
13625.00	89.970	358.650	6920.04	7507.74	7500.44	-341.32	40.5255671	-104.5863744	0.37	
13720.00	89.910	358.950	6920.14	7602.73	7595.42	-343.31	40.5258278	-104.5863781	0.32	
13815.00	90.120	359.150	6920.12	7697.72	7690.40	-344.89	40.5260886	-104.5863802	0.31	
13909.00	89.940	358.360	6920.07	7791.71	7784.38	-346.93	40.5263466	-104.5863841	0.86	
14004.00	89.880	357.980	6920.22	7886.71	7879.33	-349.97	40.5266073	-104.5863915	0.40	
14099.00	90.030	359.080	6920.29	7981.70	7974.30	-352.40	40.5268680	-104.5863967	1.17	
14193.00	90.180	0.100	6920.12	8075.67	8068.29	-353.08	40.5271260	-104.5863957	1.10	
14288.00	90.460	0.500	6919.59	8170.59	8163.29	-352.58	40.5273867	-104.5863904	0.51	
14383.00	90.370	0.170	6918.90	8265.51	8258.29	-352.02	40.5276474	-104.5863848	0.36	
14477.00	90.220	0.080	6918.42	8359.45	8352.29	-351.82	40.5279054	-104.5863806	0.19	
14572.00	90.250	359.080	6918.03	8454.41	8447.28	-352.51	40.5281662	-104.5863796	1.05	
14667.00	90.180	359.160	6917.67	8549.39	8542.27	-353.97	40.5284269	-104.5863813	0.11	
14856.00	90.090	359.000	6917.22	8738.36	8731.24	-357.01	40.5289457	-104.5863852	0.10	
14951.00	90.250	358.920	6916.94	8833.35	8826.23	-358.73	40.5292065	-104.5863879	0.19	
15046.00	89.910	359.030	6916.81	8928.33	8921.21	-360.43	40.5294672	-104.5863905	0.38	
15140.00	89.910	358.780	6916.96	9022.32	9015.19	-362.23	40.5297252	-104.5863935	0.27	
15235.00	89.850	358.960	6917.16	9117.31	9110.18	-364.10	40.5299860	-104.5863967	0.20	
15330.00	90.090	358.950	6917.21	9212.30	9205.16	-365.83	40.5302467	-104.5863994	0.25	
15425.00	90.120	358.730	6917.03	9307.29	9300.14	-367.76	40.5305075	-104.5864028	0.23	
15519.00	90.060	358.960	6916.88	9401.28	9394.12	-369.65	40.5307655	-104.5864062	0.25	
15614.00	90.060	358.930	6916.78	9496.27	9489.11	-371.40	40.5310262	-104.5864089	0.03	
15709.00	90.120	358.970	6916.64	9591.25	9584.09	-373.14	40.5312870	-104.5864117	0.08	
15804.00	89.910	359.020	6916.61	9686.24	9679.07	-374.81	40.5315477	-104.5864141	0.23	
15898.00	90.180	359.060	6916.54	9780.23	9773.06	-376.38	40.5318057	-104.5864163	0.29	
15993.00	90.400	359.140	6916.06	9875.21	9868.05	-377.87	40.5320665	-104.5864182	0.25	
16088.00	89.910	358.950	6915.80	9970.19	9963.03	-379.46	40.5323272	-104.5864203	0.55	
16183.00	89.970	358.950	6915.90	10065.18	10058.02	-381.20	40.5325880	-104.5864231	0.06	
16277.00	90.030	358.870	6915.90	10159.17	10152.00	-382.99	40.5328460	-104.5864260	0.11	
16372.00	89.850	358.640	6916.00	10254.16	10246.98	-385.05	40.5331067	-104.5864299	0.31	
16467.00	90.400	359.060	6915.79	10349.15	10341.96	-386.96	40.5333675	-104.5864333	0.73	
16561.00	90.060	358.840	6915.41	10443.14	10435.94	-388.68	40.5336255	-104.5864360	0.43	
16656.00	90.150	359.070	6915.24	10538.12	10530.93	-390.41	40.5338862	-104.5864387	0.26	
16751.00	89.970	358.870	6915.14	10633.11	10625.91	-392.12	40.5341470	-104.5864413	0.28	
16845.00	90.150	359.060	6915.04	10727.10	10719.90	-393.82	40.5344050	-104.5864440	0.28	
16940.00	90.060	358.850	6914.87	10822.09	10814.88	-395.55	40.5346657	-104.5864467	0.24	

REFERENCE WELLPATH IDENTIFICATION

Operator	NOBLE ENERGY, INC	Well	BISHOP A06-722
Field	WELD COUNTY (NOBLE NAD 83 GRID)	API/Legal	05-123-52065
Facility	SEC.07-T06N-R64W	Wellbore	BISHOP A06-722 AWB
Slot	SLOT#23 BISHOP A06-722 (1009'FNL & 486'FEL,SEC.07)		

WELLPATH DATA (187 stations) † = interpolated, ‡ = extrapolated station

MD [ft]	Inclination [°]	Azimuth [°]	TVD [ft]	Vert Sect [ft]	North [ft]	East [ft]	Latitude	Longitude	DLS [°/100ft]	Comments
17035.00	90.090	359.020	6914.74	10917.07	10909.86	-397.32	40.5349265	-104.5864495	0.18	
17130.00	89.970	358.820	6914.69	11012.06	11004.85	-399.11	40.5351872	-104.5864524	0.25	
17224.00	90.120	359.090	6914.62	11106.05	11098.83	-400.82	40.5354452	-104.5864551	0.33	
17319.00	90.090	358.940	6914.45	11201.04	11193.82	-402.46	40.5357060	-104.5864575	0.16	
17414.00	90.120	358.890	6914.27	11296.02	11288.80	-404.25	40.5359667	-104.5864604	0.06	
17474.00	89.970	358.860	6914.22	11356.02	11348.79	-405.43	40.5361314	-104.5864624	0.25	Last BH MWD Survey
17499.00‡	89.970	358.860	6914.24	11381.01	11373.78	-405.93	40.5362000	-104.5864633	0.00	Projection to Bit (200'FNL & 855'FEL,SEC.31)

REFERENCE WELLPATH IDENTIFICATION			
Operator	NOBLE ENERGY, INC	Well	BISHOP A06-722
Field	WELD COUNTY (NOBLE NAD 83 GRID)	API/Legal	05-123-52065
Facility	SEC.07-T06N-R64W	Wellbore	BISHOP A06-722 AWB
Slot	SLOT#23 BISHOP A06-722 (1009'FNL & 486'FEL,SEC.07)		

TARGETS								
Name	TVD [ft]	North [ft]	East [ft]	Grid East [US ft]	Grid North [US ft]	Latitude	Longitude	Shape
OGDP 1 SEC.07-T06N-R64W	1.00	149.64	61.03	3254380.72	1428262.61	40.5053800	-104.5852000	polygon
	2D Polygon: dimensions not calculated							
OGDP1 SEC.05-T06N-R64W	19.00	168.08	-4191.33	3250128.51	1428281.04	40.5055500	-104.6004900	polygon
	2D Polygon: dimensions not calculated							
OGDP1 SEC.06-T06N-R64W	19.00	168.08	-4191.33	3250128.51	1428281.04	40.5055500	-104.6004900	polygon
	2D Polygon: dimensions not calculated							
OGDP1 SEC.31-T07N-R64W	19.00	168.08	-4191.33	3250128.51	1428281.04	40.5055500	-104.6004900	polygon
	2D Polygon: dimensions not calculated							
OGDP1 SEC.32-T07N-R64W	19.00	168.08	-4191.33	3250128.51	1428281.04	40.5055500	-104.6004900	polygon
	2D Polygon: dimensions not calculated							
BISHOP A06-722 BHL Rev-2 (200'FSL & 841'FEL,SEC.31)	6915.00	11374.28	-391.91	3253927.79	1439486.85	40.5362010	-104.5864128	point
BISHOP A06-722 LP Rev-2 (200'FSL & 763'FEL,SEC.06)	6915.00	1203.19	-287.54	3254032.16	1429316.12	40.5082815	-104.5864144	point
BISHOP A06-722 BHL Rev-1 (200'FSL & 841'FEL,SEC.31)	6973.00	11374.28	-391.91	3253927.79	1439486.85	40.5362010	-104.5864128	point
BISHOP A06-722 LP Rev-1 (200'FSL & 763'FEL,SEC.06)	6973.00	1203.19	-287.54	3254032.16	1429316.12	40.5082815	-104.5864144	point
DP 136 Hardlines (200'FNL/FSL & 300'FEL/FWL)	7002.00	149.84	44.90	3254364.58	1428262.81	40.5053810	-104.5852580	polygon
	2D Polygon: dimensions not calculated							

WELLPATH COMPOSITION - Ref Wellbore: BISHOP A06-722 AWB Ref Wellpath: BISHOP A06-722 AWP					
Start MD [ft]	End MD [ft]	Positional Uncertainty Model	Log Name/Comment	Wellbore	Survey Date
29.00	2017.00	OWSG MWD rev2 (MS+IFR1)	13.5" NaviTrak Surface OWSG MWD rev2 (MS + IFR1) <224'-2017>	BISHOP A06-722 AWB	2/13/2024
2017.00	17499.00	OWSG MWD rev2 (MS+IFR1)	8.5" Lucida OWSG MWD rev2 (MS+IFR1) <2067'-17474>	BISHOP A06-722 AWB	2/26/2024

REFERENCE WELLPATH IDENTIFICATION			
Operator	NOBLE ENERGY, INC	Well	BISHOP A06-722
Field	WELD COUNTY (NOBLE NAD 83 GRID)	API/Legal	05-123-52065
Facility	SEC.07-T06N-R64W	Wellbore	BISHOP A06-722 AWB
Slot	SLOT#23 BISHOP A06-722 (1009'FNL & 486'FEL,SEC.07)		

WELLPATH COMMENTS				
MD [ft]	Inclination [°]	Azimuth [°]	TVD [ft]	Comment
224.00	0.590	294.820	224.00	First BH MWD Survey
7327.13	88.649	1.594	6915.06	Cross 200' Hardline (200'FSL & 765'FEL,SEC.06)
7330.00	88.735	1.549	6915.13	Shallowest MD for Perf
17474.00	89.970	358.860	6914.22	Last BH MWD Survey
17499.00	89.970	358.860	6914.24	Projection to Bit (200'FNL & 855'FEL,SEC.31)