

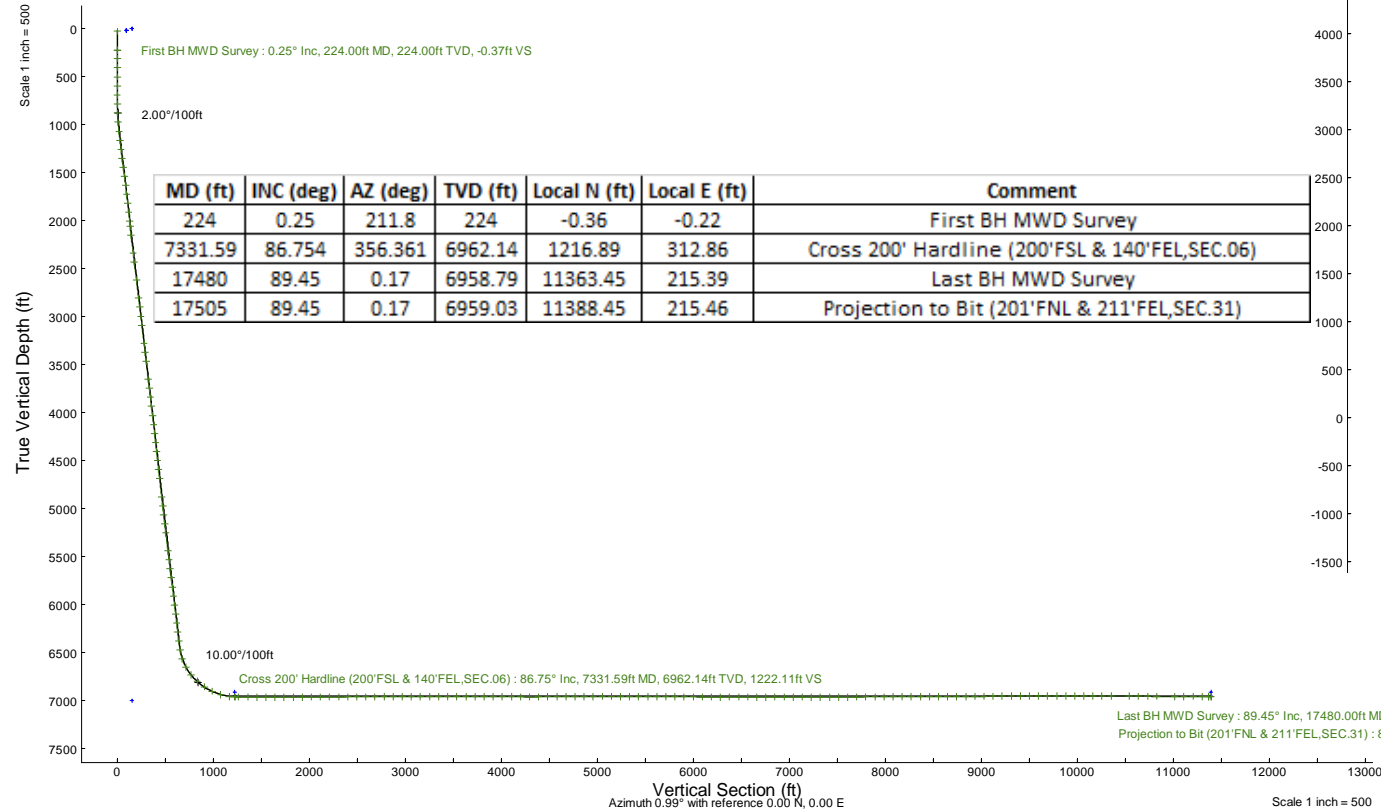
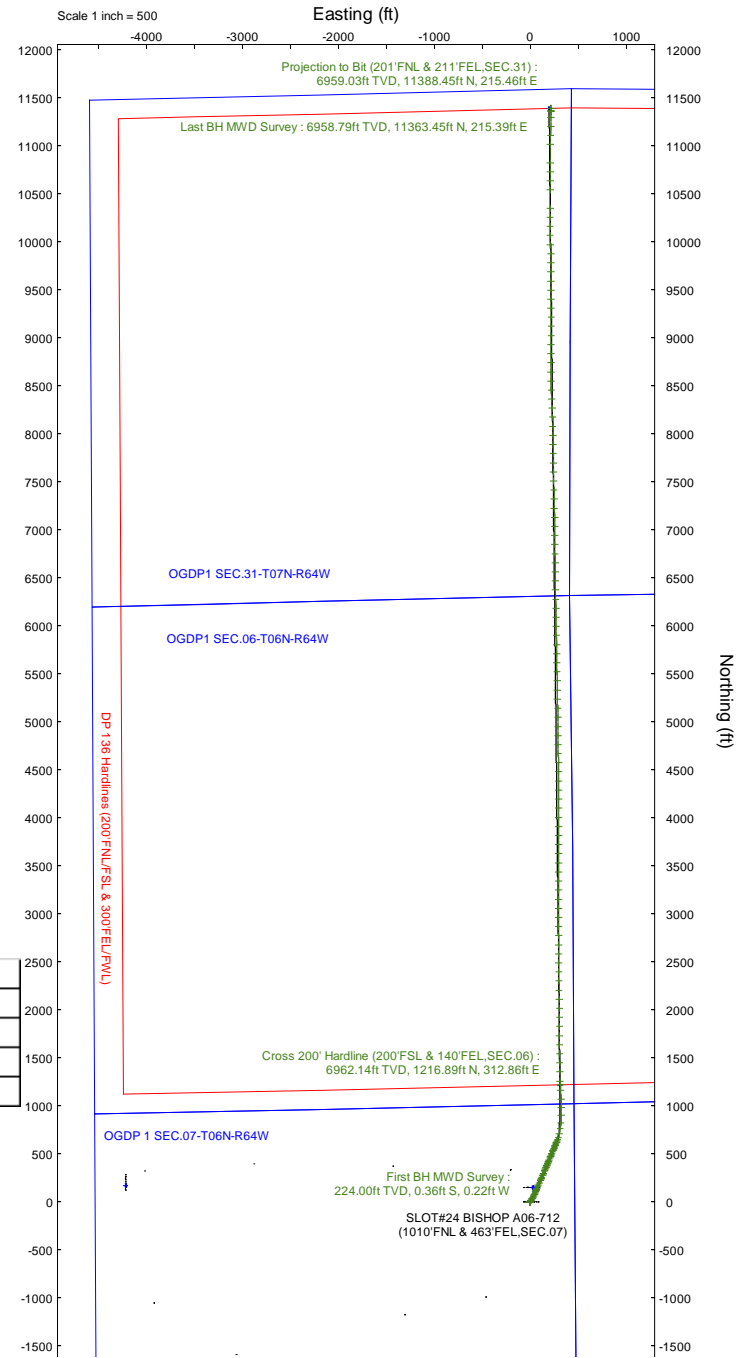
NOBLE ENERGY, INC

Location: COLORADO Slot: SLOT#24 BISHOP A06-712 (1010'FNL & 463'FEL,SEC.07)
 Field: WELD COUNTY (NOBLE NAD 83 GRID) Well: BISHOP A06-712
 Facility: SEC.07-T06N-R64W Wellbore: BISHOP A06-712 PWB

Plot reference wellpath is BISHOP A06-712 (REV-E.0) PWP	Grid System: NAD83 / Lambert Colorado SP, Northern Zone (501), US feet
True vertical depths are referenced to RIG (4744'GL+29'KB@4773'RKB) (RKB)	North Reference: Grid north
Reference wellpath measured depths are referenced to RIG (4744'GL+29'KB@4773'RKB) (RKB)	Scale: True distance
RIG (4744'GL+29'KB@4773'RKB) (RKB) to Mean Sea Level: 4773 feet	Coordinates are in feet referenced to Slot
Mean Sea Level to Ground level (At Slot: SLOT#24 BISHOP A06-712 (1010'FNL & 463'FEL,SEC.07)): 0 feet	Depths are in feet
Offset wellpath MDs are referenced to each path's default MD datum	Created by: matsam01 on 2024-04-30; Database: WA_Denver

Location Information

Facility Name		Grid East (US ft)	Grid North (US ft)	Latitude	Longitude	
SEC.07-T06N-R64W		3254380.716	1428262.611	40°30'19.3680"N	104°35'6.7200"W	
Slot	Local N (ft)	Local E (ft)	Grid East (US ft)	Grid North (US ft)	Latitude	Longitude
SLOT#24 BISHOP A06-712 (1010'FNL & 463'FEL,SEC.07)	-149.78	-38.50	3254342.216	1428112.841	40°30'17.8920"N	104°35'7.2384"W
RIG (4744'GL+29'KB@4773'RKB) (RKB) to Ground level (At Slot: SLOT#24 BISHOP A06-712 (1010'FNL & 463'FEL,SEC.07))						4773ft
Mean Sea Level to Ground level (At Slot: SLOT#24 BISHOP A06-712 (1010'FNL & 463'FEL,SEC.07))						0ft
RIG (4744'GL+29'KB@4773'RKB) (RKB) to Mean Sea Level						4773ft



REFERENCE WELLPATH IDENTIFICATION

Operator	NOBLE ENERGY, INC	Well	BISHOP A06-712
Field	WELD COUNTY (NOBLE NAD 83 GRID)	API/Legal	05-123-52066
Facility	SEC.07-T06N-R64W	Wellbore	BISHOP A06-712 AWB
Slot	SLOT#24 BISHOP A06-712 (1010'FNL & 463'FEL,SEC.07)		

REPORT SETUP INFORMATION

Projection System	NAD83 / Lambert Colorado SP, Northern Zone (501), US feet	Software System	WellArchitect® 6.0
North Reference	Grid	User	Martsam01
Scale	0.999967	Report Generated	4/25/2024 at 11:25:56 PM
Convergence at slot	0.59° East	Database	WA_Denver

WELLPATH LOCATION

	Local coordinates							Comment	Geographic coordinates		
	North[ft]	East[ft]	MD (ft)	INC (deg)	AZ (deg)	TVD (ft)	Local N (ft)		Local E (ft)	Latitude	Longitude
Slot Location	-149.78	-38.50	7331.59	86.754	356.361	6962.14	1216.89	312.86	First BH MWD Survey	40.5049700°	-104.5853440°
Facility Reference Pt			17480	89.45	0.17	6958.79	11363.45	215.39	Last BH MWD Survey	40.5053800°	-104.5852000°
Field Reference Pt			17505	89.45	0.17	6959.03	11388.45	215.46	Projection to Bit (201'FNL & 211'FEL,SEC.31)	48.7761986°	-105.5000000°

WELLPATH DATUM

Calculation method	Minimum curvature	RIG (4744'GL+29'KB@4773'RKB) (RKB) to Facility Vertical Datum	4773.00ft
Horizontal Reference Pt	Slot	RIG (4744'GL+29'KB@4773'RKB) (RKB) to Mean Sea Level	4773.00ft
Vertical Reference Pt	RIG (4744'GL+29'KB@4773'RKB) (RKB)	RIG (4744'GL+29'KB@4773'RKB) (RKB) to Ground Level at Slot (SLOT#24 BISHOP A06-712 (1010'FNL & 463'FEL,SEC.07))	4773.00ft
MD Reference Pt	RIG (4744'GL+29'KB@4773'RKB) (RKB)	Section Origin	N 0.00, E 0.00 ft
Field Vertical Reference	Mean Sea Level	Section Azimuth	0.99°

REFERENCE WELLPATH IDENTIFICATION

Operator	NOBLE ENERGY, INC	Well	BISHOP A06-712
Field	WELD COUNTY (NOBLE NAD 83 GRID)	API/Legal	05-123-52066
Facility	SEC.07-T06N-R64W	Wellbore	BISHOP A06-712 AWB
Slot	SLOT#24 BISHOP A06-712 (1010'FNL & 463'FEL,SEC.07)		

WELLPATH DATA (180 stations) † = interpolated, ‡ = extrapolated station

MD [ft]	Inclination [°]	Azimuth [°]	TVD [ft]	Vert Sect [ft]	North [ft]	East [ft]	Latitude	Longitude	DLS [°/100ft]	Comments
0.00†	0.000	211.800	0.00	0.00	0.00	0.00	40.5049700	-104.5853440	0.00	
29.00	0.000	211.800	29.00	0.00	0.00	0.00	40.5049700	-104.5853440	0.00	
224.00	0.250	211.800	224.00	-0.37	-0.36	-0.22	40.5049690	-104.5853448	0.13	First BH MWD Survey
314.00	0.400	249.240	314.00	-0.65	-0.64	-0.62	40.5049683	-104.5853463	0.28	
408.00	0.560	234.960	407.99	-1.04	-1.02	-1.30	40.5049672	-104.5853487	0.21	
503.00	0.700	239.920	502.99	-1.61	-1.58	-2.19	40.5049657	-104.5853519	0.16	
598.00	0.610	245.040	597.98	-2.14	-2.08	-3.15	40.5049644	-104.5853554	0.11	
692.00	0.270	172.710	691.98	-2.57	-2.51	-3.57	40.5049632	-104.5853569	0.62	
787.00	1.360	43.770	786.97	-1.97	-1.92	-2.76	40.5049648	-104.5853540	1.63	
882.00	3.180	26.060	881.89	1.25	1.26	-0.83	40.5049735	-104.5853469	2.03	
976.00	5.210	29.640	975.64	7.35	7.31	2.43	40.5049900	-104.5853350	2.18	
1071.00	6.920	34.190	1070.10	15.93	15.80	7.78	40.5050131	-104.5853154	1.87	
1166.00	8.100	35.640	1164.29	26.22	25.97	14.90	40.5050409	-104.5852895	1.26	
1260.00	8.300	36.760	1257.33	37.18	36.79	22.81	40.5050703	-104.5852606	0.27	
1355.00	8.490	29.340	1351.31	48.91	48.40	30.35	40.5051020	-104.5852331	1.16	
1450.00	7.940	24.010	1445.34	61.12	60.50	36.46	40.5051350	-104.5852107	0.99	
1544.00	8.590	24.130	1538.36	73.55	72.84	41.97	40.5051687	-104.5851904	0.69	
1639.00	7.290	22.330	1632.45	85.69	84.89	47.16	40.5052017	-104.5851713	1.39	
1733.00	7.190	21.190	1725.70	96.77	95.89	51.56	40.5052317	-104.5851551	0.19	
1828.00	6.400	22.630	1820.03	107.27	106.32	55.74	40.5052602	-104.5851396	0.85	
1923.00	6.570	21.600	1914.42	117.28	116.26	59.78	40.5052874	-104.5851247	0.22	
2013.00	5.760	20.470	2003.90	126.35	125.28	63.25	40.5053121	-104.5851119	0.91	
2067.00	5.680	20.590	2057.63	131.43	130.32	65.14	40.5053258	-104.5851049	0.15	
2162.00	7.610	23.580	2151.99	141.66	140.49	69.31	40.5053536	-104.5850896	2.06	
2351.00	7.390	23.540	2339.37	164.44	163.10	79.17	40.5054154	-104.5850533	0.12	
2446.00	7.560	24.730	2433.57	175.81	174.38	84.23	40.5054462	-104.5850347	0.24	
2635.00	7.510	26.120	2620.93	198.37	196.76	94.87	40.5055074	-104.5849956	0.10	
2825.00	7.540	23.860	2809.30	221.10	219.31	105.37	40.5055690	-104.5849570	0.16	
2919.00	7.650	22.190	2902.47	232.61	230.74	110.23	40.5056002	-104.5849391	0.26	
3014.00	7.190	21.450	2996.68	244.08	242.13	114.79	40.5056313	-104.5849222	0.49	
3108.00	7.430	23.010	3089.91	255.22	253.20	119.32	40.5056616	-104.5849056	0.33	
3298.00	7.250	23.400	3278.36	277.70	275.51	128.88	40.5057225	-104.5848703	0.10	
3393.00	7.280	22.060	3372.59	288.85	286.59	133.53	40.5057528	-104.5848532	0.18	
3488.00	7.070	23.550	3466.85	299.87	297.53	138.12	40.5057827	-104.5848363	0.30	
3677.00	7.260	23.770	3654.37	321.62	319.12	147.58	40.5058417	-104.5848015	0.10	
3772.00	7.360	21.700	3748.60	332.85	330.27	152.25	40.5058722	-104.5847843	0.30	
3866.00	7.560	20.960	3841.81	344.29	341.64	156.69	40.5059033	-104.5847679	0.24	
3961.00	6.960	21.830	3936.04	355.54	352.82	161.07	40.5059338	-104.5847517	0.64	
4056.00	7.320	21.760	4030.31	366.58	363.78	165.45	40.5059638	-104.5847356	0.38	
4150.00	6.760	23.730	4123.60	377.28	374.41	169.90	40.5059928	-104.5847192	0.65	
4245.00	6.430	23.160	4217.97	387.37	384.42	174.24	40.5060202	-104.5847032	0.35	
4340.00	6.540	23.440	4312.36	397.29	394.27	178.48	40.5060471	-104.5846876	0.12	
4435.00	6.410	22.550	4406.76	407.22	404.13	182.67	40.5060740	-104.5846722	0.17	
4529.00	6.700	22.770	4500.14	417.20	414.03	186.80	40.5061011	-104.5846569	0.31	
4624.00	7.190	22.920	4594.44	427.86	424.62	191.26	40.5061300	-104.5846405	0.52	

REFERENCE WELLPATH IDENTIFICATION			
Operator	NOBLE ENERGY, INC	Well	BISHOP A06-712
Field	WELD COUNTY (NOBLE NAD 83 GRID)	API/Legal	05-123-52066
Facility	SEC.07-T06N-R64W	Wellbore	BISHOP A06-712 AWB
Slot	SLOT#24 BISHOP A06-712 (1010'FNL & 463'FEL,SEC.07)		

WELLPATH DATA (180 stations) † = interpolated, ‡ = extrapolated station

MD [ft]	Inclination [°]	Azimuth [°]	TVD [ft]	Vert Sect [ft]	North [ft]	East [ft]	Latitude	Longitude	DLS ["/100ft]	Comments
4719.00	6.850	23.100	4688.73	438.62	435.31	195.80	40.5061592	-104.5846238	0.36	
4909.00	7.530	22.980	4877.24	460.66	457.19	205.11	40.5062190	-104.5845895	0.36	
5003.00	6.680	22.570	4970.51	471.46	467.91	209.61	40.5062483	-104.5845729	0.91	
5098.00	6.990	22.760	5064.84	481.96	478.34	213.97	40.5062768	-104.5845569	0.33	
5193.00	6.930	23.840	5159.14	492.61	488.91	218.52	40.5063057	-104.5845401	0.15	
5287.00	7.220	24.210	5252.42	503.27	499.49	223.24	40.5063346	-104.5845228	0.31	
5477.00	7.530	22.580	5440.85	525.82	521.87	232.91	40.5063958	-104.5844871	0.20	
5572.00	7.610	22.510	5535.02	537.46	533.43	237.71	40.5064274	-104.5844694	0.08	
5666.00	7.340	22.570	5628.22	548.83	544.73	242.40	40.5064582	-104.5844522	0.29	
5761.00	7.490	22.080	5722.43	560.25	556.07	247.05	40.5064892	-104.5844350	0.17	
5856.00	7.720	23.130	5816.59	571.94	567.67	251.89	40.5065210	-104.5844172	0.28	
5951.00	7.620	22.330	5910.74	583.71	579.37	256.79	40.5065529	-104.5843991	0.15	
6046.00	7.520	22.530	6004.92	595.36	590.94	261.56	40.5065845	-104.5843815	0.11	
6140.00	7.030	22.980	6098.16	606.42	601.91	266.17	40.5066145	-104.5843646	0.52	
6235.00	6.860	22.440	6192.46	617.09	612.51	270.60	40.5066435	-104.5843482	0.19	
6330.00	6.410	21.710	6286.83	627.33	622.68	274.73	40.5066713	-104.5843330	0.48	
6425.00	7.500	23.100	6381.12	638.03	633.31	279.12	40.5067003	-104.5843168	1.16	
6519.00	10.770	20.940	6473.92	651.98	647.16	284.67	40.5067382	-104.5842964	3.50	
6614.00	19.590	14.960	6565.52	675.82	670.88	291.97	40.5068031	-104.5842692	9.42	
6709.00	28.710	13.770	6652.11	713.61	708.51	301.53	40.5069061	-104.5842334	9.61	
6804.00	39.100	9.400	6730.87	765.65	760.38	311.88	40.5070482	-104.5841943	11.23	
6899.00	48.080	3.600	6799.63	830.75	825.37	319.01	40.5072263	-104.5841662	10.34	
6993.00	56.710	1.030	6856.94	905.12	899.70	321.92	40.5074303	-104.5841530	9.43	
7088.00	64.630	1.090	6903.44	987.88	982.44	323.45	40.5076573	-104.5841444	8.34	
7183.00	73.290	356.720	6937.53	1076.37	1070.98	321.66	40.5079004	-104.5841476	10.07	
7278.00	82.740	356.510	6957.23	1168.92	1163.64	316.18	40.5081549	-104.5841639	9.95	
7331.59†	86.754	356.361	6962.14	1222.11	1216.89	312.86	40.5083011	-104.5841738	7.49	Cross 200' Hardline (200'FSL & 140'FEL,SEC.06)
7334.00†	86.934	356.355	6962.27	1224.51	1219.29	312.71	40.5083077	-104.5841743	7.49	Shallowest MD for Perf
7372.00	89.780	356.250	6963.36	1262.36	1257.19	310.26	40.5084118	-104.5841817	7.49	
7467.00	89.910	359.620	6963.62	1357.21	1352.12	306.84	40.5086725	-104.5841905	3.55	
7562.00	89.600	359.090	6964.02	1452.17	1447.11	305.77	40.5089332	-104.5841908	0.65	
7657.00	89.850	359.780	6964.48	1547.14	1542.10	304.83	40.5091940	-104.5841906	0.77	
7751.00	89.690	0.000	6964.86	1641.12	1636.10	304.65	40.5094520	-104.5841878	0.29	
7846.00	90.150	359.910	6964.99	1736.10	1731.10	304.58	40.5097127	-104.5841845	0.49	
7941.00	90.370	0.250	6964.56	1831.09	1826.10	304.71	40.5099735	-104.5841805	0.43	
8036.00	90.490	359.850	6963.85	1926.07	1921.10	304.79	40.5102342	-104.5841767	0.44	
8130.00	90.460	0.180	6963.07	2020.06	2015.09	304.82	40.5104922	-104.5841731	0.35	
8225.00	89.630	357.020	6962.99	2114.96	2110.05	302.50	40.5107529	-104.5841779	3.44	
8320.00	90.150	359.610	6963.17	2209.85	2205.00	299.70	40.5110136	-104.5841844	2.78	
8415.00	90.030	359.300	6963.03	2304.82	2300.00	298.80	40.5112743	-104.5841842	0.35	
8509.00	90.310	359.940	6962.75	2398.79	2394.00	298.18	40.5115324	-104.5841829	0.74	
8604.00	90.000	359.410	6962.49	2493.76	2488.99	297.64	40.5117931	-104.5841813	0.65	
8699.00	90.460	359.890	6962.11	2588.73	2583.99	297.06	40.5120539	-104.5841799	0.70	
8793.00	89.660	359.940	6962.01	2682.72	2677.99	296.92	40.5123119	-104.5841769	0.85	
8888.00	90.830	0.070	6961.60	2777.70	2772.99	296.93	40.5125726	-104.5841733	1.24	

REFERENCE WELLPATH IDENTIFICATION			
Operator	NOBLE ENERGY, INC	Well	BISHOP A06-712
Field	WELD COUNTY (NOBLE NAD 83 GRID)	API/Legal	05-123-52066
Facility	SEC.07-T06N-R64W	Wellbore	BISHOP A06-712 AWB
Slot	SLOT#24 BISHOP A06-712 (1010'FNL & 463'FEL,SEC.07)		

WELLPATH DATA (180 stations)

MD [ft]	Inclination [°]	Azimuth [°]	TVD [ft]	Vert Sect [ft]	North [ft]	East [ft]	Latitude	Longitude	DLS [°/100ft]	Comments
8983.00	90.280	359.860	6960.68	2872.68	2867.98	296.87	40.5128333	-104.5841700	0.62	
9078.00	90.430	359.850	6960.09	2967.66	2962.98	296.63	40.5130941	-104.5841674	0.16	
9173.00	90.150	359.760	6959.61	3062.64	3057.98	296.30	40.5133548	-104.5841650	0.31	
9267.00	89.940	359.930	6959.54	3156.62	3151.98	296.05	40.5136128	-104.5841624	0.29	
9362.00	89.820	0.070	6959.74	3251.61	3246.98	296.05	40.5138736	-104.5841589	0.19	
9457.00	90.650	359.690	6959.35	3346.59	3341.98	295.85	40.5141343	-104.5841561	0.96	
9552.00	89.380	359.950	6959.32	3441.56	3436.97	295.55	40.5143951	-104.5841536	1.36	
9646.00	90.310	0.080	6959.58	3535.55	3530.97	295.58	40.5146531	-104.5841500	1.00	
9741.00	89.970	359.990	6959.35	3630.54	3625.97	295.64	40.5149138	-104.5841463	0.37	
9836.00	89.850	0.360	6959.50	3725.53	3720.97	295.93	40.5151746	-104.5841417	0.41	
9931.00	90.220	0.080	6959.44	3820.52	3815.97	296.29	40.5154353	-104.5841369	0.49	
10026.00	89.600	359.930	6959.59	3915.50	3910.97	296.30	40.5156960	-104.5841333	0.67	
10120.00	89.380	359.580	6960.42	4009.48	4004.96	295.90	40.5159540	-104.5841313	0.44	
10215.00	89.910	0.100	6961.01	4104.45	4099.96	295.63	40.5162148	-104.5841287	0.78	
10310.00	88.680	359.080	6962.18	4199.42	4194.95	294.95	40.5164755	-104.5841276	1.68	
10405.00	90.060	359.140	6963.23	4294.36	4289.93	293.48	40.5167363	-104.5841294	1.45	
10499.00	90.550	1.320	6962.73	4388.34	4383.92	293.85	40.5169942	-104.5841245	2.38	
10594.00	91.080	359.590	6961.37	4483.32	4478.90	294.61	40.5172549	-104.5841183	1.90	
10689.00	90.680	358.920	6959.92	4578.27	4573.88	293.37	40.5175156	-104.5841192	0.82	
10784.00	90.150	359.180	6959.23	4673.21	4668.87	291.80	40.5177764	-104.5841214	0.62	
10878.00	90.120	359.520	6959.01	4767.17	4762.86	290.73	40.5180344	-104.5841217	0.36	
10973.00	90.520	359.530	6958.48	4862.14	4857.86	289.94	40.5182951	-104.5841210	0.42	
11067.00	90.710	359.600	6957.47	4956.10	4951.85	289.23	40.5185531	-104.5841201	0.22	
11162.00	90.430	359.040	6956.52	5051.06	5046.84	288.10	40.5188139	-104.5841206	0.66	
11257.00	89.600	358.620	6956.50	5145.99	5141.82	286.16	40.5190746	-104.5841241	0.98	
11352.00	89.350	359.010	6957.37	5240.92	5236.79	284.20	40.5193354	-104.5841276	0.49	
11446.00	89.290	358.810	6958.48	5334.85	5330.77	282.41	40.5195933	-104.5841305	0.22	
11541.00	89.850	358.910	6959.20	5429.78	5425.75	280.52	40.5198541	-104.5841338	0.60	
11636.00	89.570	359.110	6959.68	5524.72	5520.73	278.88	40.5201148	-104.5841362	0.36	
11730.00	89.410	359.330	6960.51	5618.67	5614.72	277.60	40.5203728	-104.5841373	0.29	
11825.00	90.090	358.710	6960.93	5713.62	5709.70	275.97	40.5206336	-104.5841396	0.97	
11920.00	89.380	358.650	6961.37	5808.54	5804.68	273.79	40.5208943	-104.5841439	0.75	
12015.00	89.850	359.070	6962.00	5903.47	5899.65	271.90	40.5211551	-104.5841472	0.66	
12109.00	89.510	359.030	6962.53	5997.41	5993.64	270.34	40.5214131	-104.5841493	0.36	
12204.00	89.720	359.050	6963.17	6092.36	6088.62	268.75	40.5216738	-104.5841515	0.22	
12299.00	89.780	358.930	6963.58	6187.30	6183.61	267.07	40.5219346	-104.5841540	0.14	
12394.00	90.000	358.870	6963.77	6282.23	6278.59	265.25	40.5221953	-104.5841570	0.24	
12488.00	90.150	359.660	6963.64	6376.19	6372.58	264.04	40.5224533	-104.5841579	0.86	
12583.00	90.150	359.290	6963.39	6471.16	6467.58	263.17	40.5227141	-104.5841575	0.39	
12678.00	89.850	358.870	6963.39	6566.10	6562.57	261.65	40.5229748	-104.5841595	0.54	
12772.00	89.600	359.060	6963.84	6660.04	6656.55	259.95	40.5232328	-104.5841621	0.33	
12867.00	90.220	359.580	6963.99	6755.00	6751.54	258.82	40.5234936	-104.5841626	0.85	
12962.00	90.090	359.270	6963.74	6849.97	6846.54	257.87	40.5237544	-104.5841625	0.35	
13056.00	90.120	358.700	6963.56	6943.91	6940.52	256.20	40.5240124	-104.5841650	0.61	
13151.00	89.510	359.340	6963.87	7038.85	7035.51	254.58	40.5242731	-104.5841673	0.93	

REFERENCE WELLPATH IDENTIFICATION				
Operator	NOBLE ENERGY, INC		Well	BISHOP A06-712
Field	WELD COUNTY (NOBLE NAD 83 GRID)		API/Legal	05-123-52066
Facility	SEC.07-T06N-R64W		Wellbore	BISHOP A06-712 AWB
Slot	SLOT#24 BISHOP A06-712 (1010'FNL & 463'FEL,SEC.07)			

WELLPATH DATA (180 stations) † = interpolated, ‡ = extrapolated station

MD [ft]	Inclination [°]	Azimuth [°]	TVD [ft]	Vert Sect [ft]	North [ft]	East [ft]	Latitude	Longitude	DLS ["/100ft]	Comments
13246.00	90.650	359.100	6963.74	7133.80	7130.49	253.28	40.5245339	-104.5841684	1.23	
13340.00	88.980	358.240	6964.04	7227.72	7224.46	251.10	40.5247918	-104.5841728	2.00	
13435.00	89.780	358.340	6965.07	7322.61	7319.42	248.27	40.5250525	-104.5841795	0.85	
13530.00	90.620	359.010	6964.74	7417.53	7414.39	246.07	40.5253133	-104.5841838	1.13	
13625.00	90.220	358.700	6964.04	7512.46	7509.37	244.17	40.5255740	-104.5841871	0.53	
13719.00	90.060	359.180	6963.81	7606.40	7603.35	242.43	40.5258320	-104.5841899	0.54	
13814.00	90.430	359.140	6963.41	7701.35	7698.34	241.04	40.5260928	-104.5841914	0.39	
13909.00	90.340	358.630	6962.77	7796.29	7793.32	239.19	40.5263535	-104.5841945	0.55	
14003.00	90.180	358.600	6962.34	7890.20	7887.29	236.92	40.5266115	-104.5841992	0.17	
14098.00	89.880	358.480	6962.29	7985.12	7982.26	234.50	40.5268722	-104.5842044	0.34	
14193.00	91.200	359.340	6961.40	8080.05	8077.23	232.69	40.5271330	-104.5842073	1.66	
14288.00	90.180	358.980	6960.25	8174.99	8172.22	231.30	40.5273937	-104.5842088	1.14	
14382.00	89.720	356.590	6960.33	8268.84	8266.14	227.67	40.5276516	-104.5842184	2.59	
14477.00	90.280	356.650	6960.33	8363.56	8360.97	222.07	40.5279120	-104.5842350	0.59	
14572.00	89.850	359.270	6960.23	8458.42	8455.90	218.69	40.5281727	-104.5842436	2.79	
14666.00	90.590	359.590	6959.87	8552.38	8549.90	217.75	40.5284307	-104.5842435	0.86	
14761.00	90.770	359.990	6958.74	8647.36	8644.89	217.40	40.5286914	-104.5842412	0.46	
14856.00	89.910	0.040	6958.17	8742.34	8739.89	217.43	40.5289522	-104.5842376	0.91	
14951.00	90.800	359.600	6957.59	8837.32	8834.88	217.13	40.5292129	-104.5842352	1.05	
15045.00	90.180	0.750	6956.78	8931.30	8928.88	217.42	40.5294709	-104.5842306	1.39	
15140.00	90.370	0.450	6956.33	9026.30	9023.87	218.41	40.5297316	-104.5842235	0.37	
15235.00	90.490	359.760	6955.61	9121.28	9118.87	218.58	40.5299923	-104.5842194	0.74	
15329.00	90.370	0.030	6954.91	9215.26	9212.87	218.41	40.5302503	-104.5842165	0.31	
15424.00	90.180	359.250	6954.45	9310.24	9307.86	217.82	40.5305111	-104.5842151	0.85	
15519.00	90.280	359.830	6954.07	9405.20	9402.86	217.05	40.5307718	-104.5842143	0.62	
15614.00	90.280	359.760	6953.61	9500.18	9497.86	216.71	40.5310326	-104.5842120	0.07	
15708.00	90.280	359.120	6953.15	9594.15	9591.85	215.79	40.5312906	-104.5842118	0.68	
15803.00	89.690	0.440	6953.17	9689.12	9686.85	215.43	40.5315513	-104.5842096	1.52	
15898.00	89.630	0.460	6953.74	9784.12	9781.84	216.18	40.5318120	-104.5842034	0.07	
15993.00	89.540	357.300	6954.42	9879.04	9876.81	214.32	40.5320727	-104.5842066	3.33	
16087.00	89.880	356.660	6954.90	9972.81	9970.68	209.37	40.5323305	-104.5842209	0.77	
16182.00	90.090	359.540	6954.92	10067.67	10065.61	206.22	40.5325912	-104.5842287	3.04	
16277.00	90.180	359.830	6954.70	10162.65	10160.61	205.69	40.5328519	-104.5842270	0.32	
16371.00	89.690	0.500	6954.81	10256.64	10254.61	205.97	40.5331099	-104.5842226	0.88	
16466.00	89.970	0.690	6955.09	10351.64	10349.61	206.95	40.5333706	-104.5842155	0.36	
16566.00	89.970	0.610	6955.19	10541.63	10539.59	209.11	40.5338920	-104.5842007	0.04	
16750.00	89.630	0.520	6955.52	10635.63	10633.59	210.03	40.5341500	-104.5841939	0.37	
16845.00	89.750	359.880	6956.03	10730.62	10728.59	210.37	40.5344107	-104.5841891	0.69	
16940.00	89.780	0.000	6956.42	10825.60	10823.59	210.27	40.5346715	-104.5841860	0.13	
17129.00	89.540	0.140	6957.54	11014.57	11012.58	210.50	40.5351902	-104.5841781	0.15	
17224.00	90.650	1.840	6957.38	11109.57	11107.56	212.14	40.5354508	-104.5841687	2.14	
17319.00	89.720	2.490	6957.08	11204.55	11202.49	215.73	40.5357113	-104.5841522	1.19	
17414.00	89.170	358.220	6958.00	11299.51	11297.46	216.32	40.5359719	-104.5841466	4.53	
17480.00	89.450	0.170	6958.79	11365.47	11363.45	215.39	40.5361531	-104.5841475	2.98	Last BH MWD Survey
17505.00‡	89.450	0.170	6959.03	11390.47	11388.45	215.46	40.5362217	-104.5841463	0.00	Projection to Bit (201'FNL & 211'FEL,SEC.31)

REFERENCE WELLPATH IDENTIFICATION			
Operator	NOBLE ENERGY, INC	Well	BISHOP A06-712
Field	WELD COUNTY (NOBLE NAD 83 GRID)	API/Legal	05-123-52066
Facility	SEC.07-T06N-R64W	Wellbore	BISHOP A06-712 AWB
Slot	SLOT#24 BISHOP A06-712 (1010'FNL & 463'FEL,SEC.07)		

TARGETS								
Name	TVD [ft]	North [ft]	East [ft]	Grid East [US ft]	Grid North [US ft]	Latitude	Longitude	Shape
OGDP 1 SEC.07-T06N-R64W	1.00	149.78	38.50	3254380.72	1428262.61	40.5053800	-104.5852000	polygon
	2D Polygon: dimensions not calculated							
OGDP 1 SEC.08-T06N-R64W	1.00	149.78	38.50	3254380.72	1428262.61	40.5053800	-104.5852000	polygon
	2D Polygon: dimensions not calculated							
OGDP1 SEC.05-T06N-R64W	19.00	168.21	-4213.86	3250128.51	1428281.04	40.5055500	-104.6004900	polygon
	2D Polygon: dimensions not calculated							
OGDP1 SEC.06-T06N-R64W	19.00	168.21	-4213.86	3250128.51	1428281.04	40.5055500	-104.6004900	polygon
	2D Polygon: dimensions not calculated							
OGDP1 SEC.31-T07N-R64W	19.00	168.21	-4213.86	3250128.51	1428281.04	40.5055500	-104.6004900	polygon
	2D Polygon: dimensions not calculated							
OGDP1 SEC.32-T07N-R64W	19.00	168.21	-4213.86	3250128.51	1428281.04	40.5055500	-104.6004900	polygon
	2D Polygon: dimensions not calculated							
BISHOP A06-712 BHL Rev-1 (200'FSL & 230'FEL,SEC.31)	6913.00	11389.02	196.65	3254538.86	1439501.46	40.5362238	-104.5842139	point
BISHOP A06-712 LP Rev-1 (200'FSL & 143'FEL,SEC.06)	6913.00	1216.89	309.65	3254651.85	1429329.68	40.5083012	-104.5841854	point
BISHOP A06-712 BHL Rev-2 (200'FSL & 230'FEL,SEC.31)	6956.00	11389.02	196.65	3254538.86	1439501.46	40.5362238	-104.5842139	point
BISHOP A06-712 LP Rev-2 (200'FSL & 143'FEL,SEC.06)	6956.00	1216.89	309.65	3254651.85	1429329.68	40.5083012	-104.5841854	point
DP 136 Hardlines (200'FNL/FSL & 300'FEL/FWL)	7002.00	149.97	22.37	3254364.58	1428262.81	40.5053810	-104.5852580	polygon
	2D Polygon: dimensions not calculated							

WELLPATH COMPOSITION - Ref Wellbore: BISHOP A06-712 AWB Ref Wellpath: BISHOP A06-712 AWP					
Start MD [ft]	End MD [ft]	Positional Uncertainty Model	Log Name/Comment	Wellbore	Survey Date
29.00	2013.00	OWSG MWD rev2 (MS+IFR1)	13.5" NaviTrak Surface OWSG MWD rev2 (MS + IFR1) <224'-2013>	BISHOP A06-712 AWB	2/13/2024
2013.00	17505.00	OWSG MWD rev2 (MS+IFR1)	8.5" Lucida OWSG MWD rev2 (MS+IFR1) <2067'-17480>	BISHOP A06-712 AWB	2/26/2024

REFERENCE WELLPATH IDENTIFICATION			
Operator	NOBLE ENERGY, INC	Well	BISHOP A06-712
Field	WELD COUNTY (NOBLE NAD 83 GRID)	API/Legal	05-123-52066
Facility	SEC.07-T06N-R64W	Wellbore	BISHOP A06-712 AWB
Slot	SLOT#24 BISHOP A06-712 (1010'FNL & 463'FEL,SEC.07)		

WELLPATH COMMENTS				
MD [ft]	Inclination [°]	Azimuth [°]	TVD [ft]	Comment
224.00	0.250	211.800	224.00	First BH MWD Survey
7331.59	86.754	356.361	6962.14	Cross 200' Hardline (200'FSL & 140'FEL,SEC.06)
7334.00	86.934	356.355	6962.27	Shallowest MD for Perf
17480.00	89.450	0.170	6958.79	Last BH MWD Survey
17505.00	89.450	0.170	6959.03	Projection to Bit (201'FNL & 211'FEL,SEC.31)