

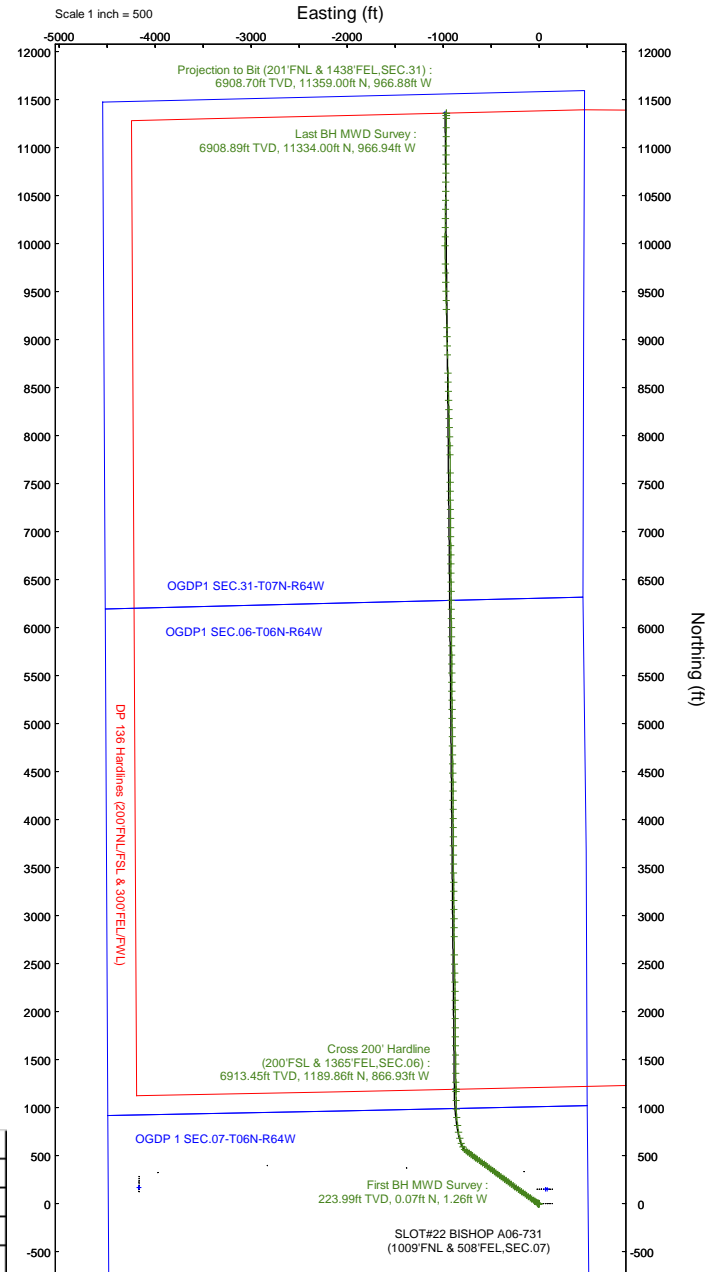
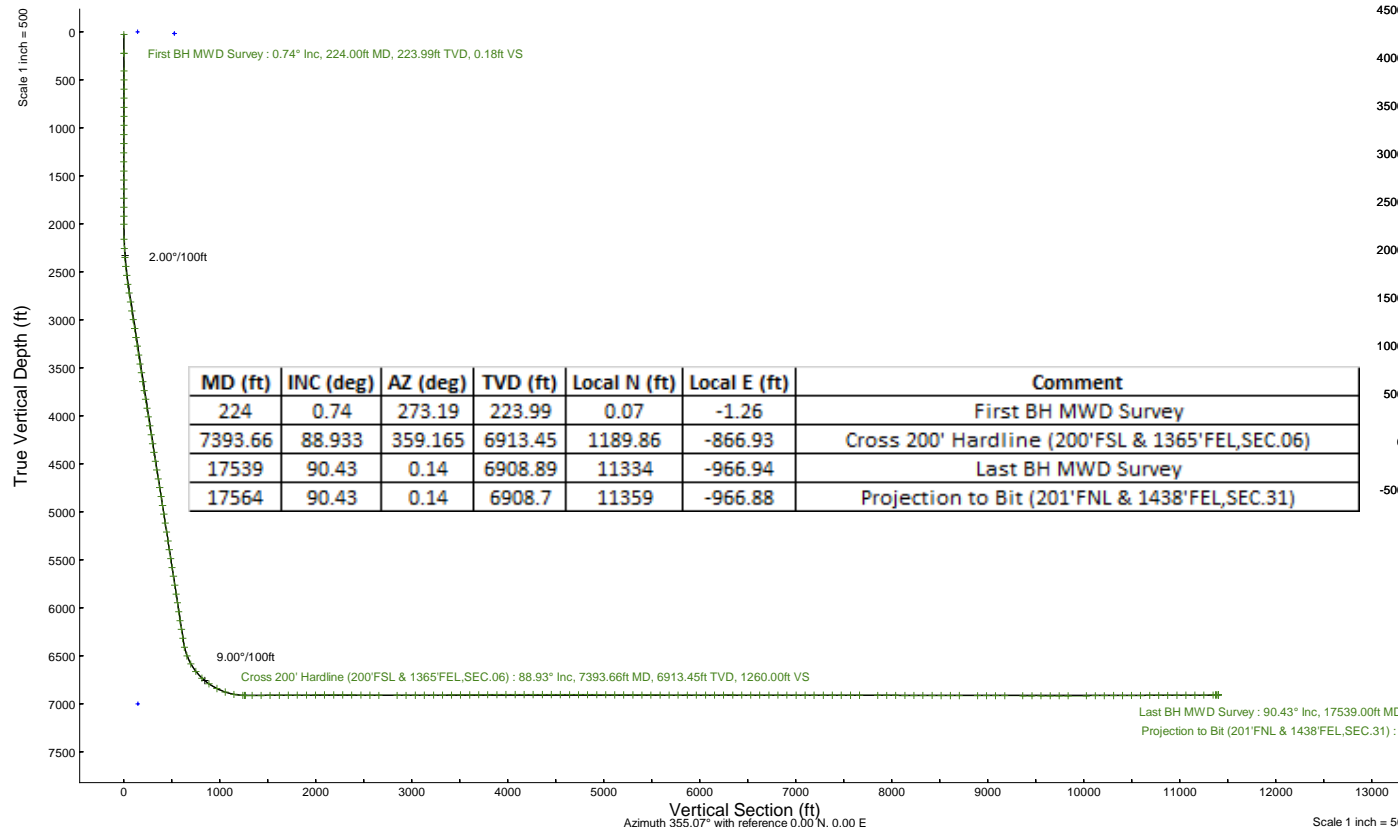
NOBLE ENERGY, INC

Location: COLORADO Slot: SLOT#22 BISHOP A06-731 (1009'FNL & 508'FEL,SEC.07)
 Field: WELD COUNTY (NOBLE NAD 83 GRID) Well: BISHOP A06-731
 Facility: SEC.07-T06N-R64W Wellbore: BISHOP A06-731 PWB

Plot reference wellpath is BISHOP A06-731 (REV-C.0) PWP
 True vertical depths are referenced to RIG (4743'GL+29'KB@4772'RKB) (RKB)
 Reference wellpath measured depths are referenced to RIG (4743'GL+29'KB@4772'RKB) (RKB)
 RIG (4743'GL+29'KB@4772'RKB) (RKB) to Mean Sea Level: 4772 feet
 Mean Sea Level to Ground level (At Slot: SLOT#22 BISHOP A06-731 (1009'FNL & 508'FEL,SEC.07)): 0 feet
 Offset wellpath MDs are referenced to each path's default MD datum

Location Information

Facility Name		Grid East (US ft)	Grid North (US ft)	Latitude	Longitude	
SEC.07-T06N-R64W		3254380.716	1428262.611	40°30'19.3680"N	104°35'6.7200"W	
Slot	Local N (ft)	Local E (ft)	Grid East (US ft)	Grid North (US ft)	Latitude	Longitude
SLOT#22 BISHOP A06-731 (1009'FNL & 508'FEL,SEC.07)	-149.88	-83.55	3254297.166	1428112.741	40°30'17.8956"N	104°35'7.8216"W
RIG (4743'GL+29'KB@4772'RKB) (RKB) to Ground level (At Slot: SLOT#22 BISHOP A06-731 (1009'FNL & 508'FEL,SEC.07))				4772h		
Mean Sea Level to Ground level (At Slot: SLOT#22 BISHOP A06-731 (1009'FNL & 508'FEL,SEC.07))				0ft		
RIG (4743'GL+29'KB@4772'RKB) (RKB) to Mean Sea Level				4772h		



Last BH MWD Survey : 90.43° Inc, 17539.00ft MD, 6908.89ft TVD, 11375.16ft VS
 Projection to Bit (201'FNL & 1438'FEL,SEC.31) : 90.43° Inc, 17564.00ft MD, 6908.70ft TVD, 11400.07ft VS

REFERENCE WELLPATH IDENTIFICATION

Operator	NOBLE ENERGY, INC	Well	BISHOP A06-731
Field	WELD COUNTY (NOBLE NAD 83 GRID)	API/Legal	05-123-52064
Facility	SEC.07-T06N-R64W	Wellbore	BISHOP A06-731 AWB
Slot	SLOT#22 BISHOP A06-731 (1009'FNL & 508'FEL,SEC.07)		

REPORT SETUP INFORMATION

Projection System	NAD83 / Lambert Colorado SP, Northern Zone (501), US feet	Software System	WellArchitect® 6.0
North Reference	Grid	User	Martsam01
Scale	0.999967	Report Generated	4/25/2024 at 11:23:05 PM
Convergence at slot	0.59° East	Database	WA_Denver

WELLPATH LOCATION

	Local coordinates		Grid coordinates		Geographic coordinates	
	North[ft]	East[ft]	Easting[US ft]	Northing[US ft]	Latitude	Longitude
Slot Location	-149.88	-83.55	3254297.17	1428112.74	40.5049710°	-104.5855060°
Facility Reference Pt			3254380.72	1428262.61	40.5053800°	-104.5852000°
Field Reference Pt			3000000.00	4454105.15	48.7761986°	-105.5000000°

WELLPATH DATUM

Calculation method	Minimum curvature	RIG (4743'GL+29'KB@4772'RKB) (RKB) to Facility Vertical Datum	4772.00ft
Horizontal Reference Pt	Slot	RIG (4743'GL+29'KB@4772'RKB) (RKB) to Mean Sea Level	4772.00ft
Vertical Reference Pt	RIG (4743'GL+29'KB@4772'RKB) (RKB)	RIG (4743'GL+29'KB@4772'RKB) (RKB) to Ground Level at Slot (SLOT#22 BISHOP A06-731 (1009'FNL & 508'FEL,SEC.07))	4772.00ft
MD Reference Pt	RIG (4743'GL+29'KB@4772'RKB) (RKB)	Section Origin	N 0.00, E 0.00 ft
Field Vertical Reference	Mean Sea Level	Section Azimuth	355.07°

REFERENCE WELLPATH IDENTIFICATION			
Operator	NOBLE ENERGY, INC	Well	BISHOP A06-731
Field	WELD COUNTY (NOBLE NAD 83 GRID)	API/Legal	05-123-52064
Facility	SEC.07-T06N-R64W	Wellbore	BISHOP A06-731 AWB
Slot	SLOT#22 BISHOP A06-731 (1009'FNL & 508'FEL,SEC.07)		

WELLPATH DATA (183 stations) † = interpolated, ‡ = extrapolated station

MD [ft]	Inclination [°]	Azimuth [°]	TVD [ft]	Vert Sect [ft]	North [ft]	East [ft]	Latitude	Longitude	DLS [°/100ft]	Comments
0.00†	0.000	273.190	0.00	0.00	0.00	0.00	40.5049710	-104.5855060	0.00	
29.00	0.000	273.190	29.00	0.00	0.00	0.00	40.5049710	-104.5855060	0.00	
224.00	0.740	273.190	223.99	0.18	0.07	-1.26	40.5049712	-104.5855105	0.38	First BH MWD Survey
409.00	0.830	271.260	408.98	0.49	0.17	-3.79	40.5049716	-104.5855196	0.05	
503.00	0.900	277.670	502.97	0.73	0.28	-5.20	40.5049719	-104.5855247	0.13	
598.00	1.170	271.320	597.95	0.99	0.40	-6.91	40.5049723	-104.5855308	0.31	
692.00	0.690	264.010	691.94	1.09	0.36	-8.43	40.5049722	-104.5855363	0.52	
787.00	1.020	257.880	786.93	0.97	0.13	-9.83	40.5049716	-104.5855413	0.36	
882.00	0.290	165.150	881.92	0.63	-0.28	-10.59	40.5049705	-104.5855441	1.13	
976.00	0.860	115.000	975.92	0.04	-0.81	-9.89	40.5049691	-104.5855416	0.76	
1071.00	1.120	123.850	1070.90	-0.89	-1.63	-8.48	40.5049668	-104.5855365	0.32	
1166.00	1.380	113.040	1165.88	-2.01	-2.59	-6.65	40.5049641	-104.5855300	0.37	
1260.00	0.220	65.030	1259.87	-2.48	-2.96	-5.45	40.5049630	-104.5855257	1.32	
1355.00	0.150	284.790	1354.87	-2.38	-2.85	-5.40	40.5049633	-104.5855255	0.37	
1450.00	0.650	305.450	1449.87	-1.99	-2.51	-5.96	40.5049643	-104.5855275	0.54	
1544.00	1.120	295.420	1543.86	-1.18	-1.80	-7.23	40.5049663	-104.5855320	0.52	
1639.00	0.250	290.560	1638.85	-0.62	-1.33	-8.26	40.5049676	-104.5855357	0.92	
1734.00	0.190	138.190	1733.85	-0.65	-1.38	-8.35	40.5049675	-104.5855361	0.45	
1828.00	0.310	90.980	1827.85	-0.81	-1.50	-7.99	40.5049671	-104.5855348	0.24	
1923.00	0.320	131.790	1922.85	-1.03	-1.68	-7.53	40.5049666	-104.5855332	0.23	
2005.00	0.140	160.430	2004.85	-1.29	-1.93	-7.33	40.5049659	-104.5855324	0.25	
2162.00	2.340	305.710	2161.80	0.61	-0.24	-9.87	40.5049706	-104.5855415	1.56	
2257.00	4.390	305.730	2256.64	4.25	3.02	-14.40	40.5049797	-104.5855577	2.16	
2351.00	6.220	307.520	2350.23	10.03	8.22	-21.36	40.5049942	-104.5855825	1.95	
2446.00	8.300	306.150	2444.46	18.01	15.40	-30.98	40.5050142	-104.5856168	2.20	
2541.00	10.210	306.090	2538.22	28.04	24.41	-43.32	40.5050392	-104.5856609	2.01	
2636.00	12.500	305.090	2631.36	40.18	35.28	-58.54	40.5050695	-104.5857152	2.42	
2730.00	13.520	304.980	2722.94	53.77	47.43	-75.86	40.5051033	-104.5857770	1.09	
2825.00	13.530	305.790	2815.31	68.15	60.29	-93.98	40.5051391	-104.5858417	0.20	
2920.00	13.590	305.110	2907.66	82.58	73.21	-112.12	40.5051751	-104.5859064	0.18	
3014.00	13.460	306.480	2999.05	96.92	86.07	-129.95	40.5052109	-104.5859701	0.37	
3109.00	13.490	305.170	3091.44	111.37	99.02	-147.90	40.5052470	-104.5860341	0.32	
3204.00	13.340	305.200	3183.84	125.58	111.72	-165.91	40.5052823	-104.5860984	0.16	
3298.00	13.050	305.290	3275.36	139.42	124.10	-183.44	40.5053168	-104.5861610	0.31	
3393.00	13.170	305.310	3367.89	153.34	136.56	-201.02	40.5053515	-104.5862238	0.13	
3488.00	13.040	306.370	3460.41	167.40	149.17	-218.48	40.5053866	-104.5862861	0.29	
3583.00	13.220	305.370	3552.93	181.50	161.81	-235.97	40.5054218	-104.5863485	0.31	
3677.00	13.040	305.830	3644.47	195.38	174.24	-253.33	40.5054564	-104.5864105	0.22	
3772.00	13.650	306.350	3736.91	209.77	187.16	-271.05	40.5054924	-104.5864737	0.65	
3867.00	13.700	307.240	3829.21	224.72	200.61	-289.04	40.5055298	-104.5865379	0.23	
3962.00	13.600	306.900	3921.53	239.72	214.12	-306.92	40.5055674	-104.5866017	0.13	
4056.00	13.490	306.360	4012.92	254.33	227.26	-324.59	40.5056039	-104.5866647	0.18	
4151.00	13.380	306.840	4105.32	268.96	240.42	-342.31	40.5056406	-104.5867280	0.16	
4246.00	13.580	306.800	4197.70	283.71	253.69	-360.04	40.5056775	-104.5867912	0.21	
4341.00	13.400	305.360	4290.08	298.25	266.74	-377.95	40.5057138	-104.5868551	0.40	

REFERENCE WELLPATH IDENTIFICATION			
Operator	NOBLE ENERGY, INC	Well	BISHOP A06-731
Field	WELD COUNTY (NOBLE NAD 83 GRID)	API/Legal	05-123-52064
Facility	SEC.07-T06N-R64W	Wellbore	BISHOP A06-731 AWB
Slot	SLOT#22 BISHOP A06-731 (1009'FNL & 508'FEL,SEC.07)		

WELLPATH DATA (183 stations) † = interpolated, ‡ = extrapolated station

MD [ft]	Inclination [°]	Azimuth [°]	TVD [ft]	Vert Sect [ft]	North [ft]	East [ft]	Latitude	Longitude	DLS [°/100ft]	Comments
4435.00	13.020	306.150	4381.59	312.26	279.29	-395.38	40.5057488	-104.5869174	0.45	
4530.00	13.940	307.360	4473.97	326.99	292.55	-413.12	40.5057856	-104.5869806	1.01	
4625.00	13.910	306.990	4566.18	342.32	306.36	-431.33	40.5058241	-104.5870456	0.10	
4720.00	13.810	306.490	4658.41	357.45	319.98	-449.57	40.5058620	-104.5871107	0.16	
4814.00	13.570	307.120	4749.74	372.26	333.30	-467.38	40.5058990	-104.5871743	0.30	
4909.00	13.510	307.240	4842.10	387.17	346.74	-485.10	40.5059364	-104.5872375	0.07	
5004.00	13.220	307.170	4934.53	401.91	360.02	-502.59	40.5059734	-104.5872999	0.31	
5098.00	12.180	306.560	5026.23	415.68	372.42	-519.12	40.5060079	-104.5873589	1.12	
5193.00	13.750	305.790	5118.81	429.69	385.00	-536.33	40.5060429	-104.5874203	1.66	
5288.00	13.480	307.500	5211.14	444.53	398.34	-554.28	40.5060800	-104.5874843	0.51	
5383.00	12.740	305.600	5303.66	458.81	411.18	-571.58	40.5061157	-104.5875461	0.90	
5477.00	13.400	305.020	5395.22	472.54	423.46	-588.93	40.5061499	-104.5876080	0.72	
5572.00	13.320	305.810	5487.65	486.75	436.18	-606.82	40.5061854	-104.5876718	0.21	
5667.00	13.300	306.090	5580.10	501.06	449.02	-624.52	40.5062211	-104.5877350	0.07	
5762.00	13.040	306.320	5672.60	515.30	461.81	-641.99	40.5062567	-104.5877974	0.28	
5857.00	12.840	306.310	5765.19	529.33	474.41	-659.13	40.5062917	-104.5878585	0.21	
5951.00	13.050	306.000	5856.80	543.17	486.83	-676.13	40.5063263	-104.5879192	0.24	
6046.00	12.820	306.000	5949.39	557.10	499.33	-693.33	40.5063611	-104.5879806	0.24	
6141.00	11.920	306.690	6042.18	570.52	511.39	-709.73	40.5063947	-104.5880391	0.96	
6236.00	13.490	306.060	6134.86	584.31	523.77	-726.55	40.5064291	-104.5880992	1.66	
6330.00	13.340	305.860	6226.29	598.59	536.58	-744.21	40.5064648	-104.5881622	0.17	
6425.00	12.990	305.980	6318.79	612.74	549.27	-761.73	40.5065001	-104.5882247	0.37	
6520.00	15.610	318.760	6410.87	630.04	565.16	-778.80	40.5065442	-104.5882855	4.30	
6615.00	21.950	332.210	6500.80	656.74	590.52	-795.53	40.5066143	-104.5883447	8.04	
6710.00	30.340	339.500	6586.03	696.29	628.78	-812.25	40.5067198	-104.5884034	9.44	
6804.00	38.740	346.200	6663.42	748.34	679.69	-827.61	40.5068599	-104.5884568	9.80	
6899.00	46.660	351.200	6733.20	812.30	742.81	-840.01	40.5070335	-104.5884990	9.06	
6994.00	54.960	352.550	6793.18	885.75	815.65	-850.35	40.5072337	-104.5885335	8.81	
7089.00	63.700	355.110	6841.60	967.35	896.80	-859.04	40.5074567	-104.5885618	9.49	
7183.00	70.670	359.020	6878.04	1053.87	983.26	-863.40	40.5076942	-104.5885743	8.35	
7278.00	79.100	358.910	6902.78	1145.29	1074.88	-865.06	40.5079457	-104.5885768	8.87	
7373.00	88.550	359.180	6912.99	1239.40	1169.21	-866.63	40.5082046	-104.5885790	9.95	
7393.66†	88.933	359.165	6913.45	1260.00	1189.86	-866.93	40.5082613	-104.5885793	1.85	Cross 200' Hardline (200'FSL & 1365'FEL,SEC.06)
7396.00†	88.976	359.163	6913.49	1262.33	1192.20	-866.96	40.5082677	-104.5885793	1.85	Shallowest MD for Perf
7468.00	90.310	359.110	6913.94	1334.15	1264.19	-868.05	40.5084654	-104.5885806	1.85	
7562.00	90.370	359.150	6913.38	1427.91	1358.18	-869.47	40.5087234	-104.5885822	0.08	
7657.00	90.310	359.500	6912.82	1522.65	1453.17	-870.59	40.5089841	-104.5885828	0.37	
7752.00	90.340	359.340	6912.28	1617.37	1548.16	-871.55	40.5092449	-104.5885827	0.17	
7847.00	90.770	359.480	6911.36	1712.10	1643.15	-872.53	40.5095056	-104.5885827	0.48	
7941.00	89.970	359.520	6910.75	1805.81	1737.15	-873.35	40.5097636	-104.5885822	0.85	
8036.00	90.280	359.430	6910.54	1900.53	1832.14	-874.22	40.5100244	-104.5885818	0.34	
8131.00	90.800	359.920	6909.65	1995.22	1927.13	-874.76	40.5102851	-104.5885802	0.75	
8226.00	90.090	359.430	6908.91	2089.91	2022.13	-875.30	40.5105459	-104.5885787	0.91	
8320.00	90.340	359.480	6908.56	2183.63	2116.12	-876.20	40.5108039	-104.5885784	0.27	
8415.00	90.120	359.710	6908.17	2278.33	2211.12	-876.87	40.5110646	-104.5885773	0.34	

REFERENCE WELLPATH IDENTIFICATION			
Operator	NOBLE ENERGY, INC	Well	BISHOP A06-731
Field	WELD COUNTY (NOBLE NAD 83 GRID)	API/Legal	05-123-52064
Facility	SEC.07-T06N-R64W	Wellbore	BISHOP A06-731 AWB
Slot	SLOT#22 BISHOP A06-731 (1009'FNL & 508'FEL,SEC.07)		

WELLPATH DATA (183 stations)

MD [ft]	Inclination [°]	Azimuth [°]	TVD [ft]	Vert Sect [ft]	North [ft]	East [ft]	Latitude	Longitude	DLS [°/100ft]	Comments
8510.00	88.890	358.590	6909.00	2373.09	2306.10	-878.28	40.5113254	-104.5885789	1.75	
8605.00	89.110	358.860	6910.65	2467.88	2401.07	-880.39	40.5115861	-104.5885829	0.37	
8699.00	89.290	359.230	6911.97	2561.64	2495.04	-881.96	40.5118441	-104.5885851	0.44	
8794.00	89.940	359.130	6912.60	2656.39	2590.03	-883.32	40.5121048	-104.5885865	0.69	
8984.00	90.030	359.410	6912.65	2845.88	2780.02	-885.74	40.5126263	-104.5885882	0.15	
9078.00	90.250	359.390	6912.42	2939.61	2874.01	-886.72	40.5128844	-104.5885882	0.24	
9173.00	90.250	359.560	6912.01	3034.33	2969.00	-887.59	40.5131451	-104.5885879	0.18	
9268.00	90.490	359.610	6911.40	3129.04	3064.00	-888.28	40.5134059	-104.5885868	0.26	
9363.00	90.580	359.520	6910.51	3223.74	3158.99	-889.00	40.5136666	-104.5885859	0.13	
9457.00	90.090	359.370	6909.96	3317.46	3252.99	-889.91	40.5139246	-104.5885857	0.55	
9552.00	90.620	359.440	6909.37	3412.19	3347.98	-890.90	40.5141854	-104.5885857	0.56	
9647.00	90.520	359.310	6908.43	3506.91	3442.97	-891.93	40.5144461	-104.5885859	0.17	
9742.00	90.250	359.770	6907.79	3601.62	3537.96	-892.70	40.5147069	-104.5885852	0.56	
9836.00	90.460	359.470	6907.21	3695.32	3631.96	-893.32	40.5149649	-104.5885839	0.39	
9931.00	90.340	359.810	6906.54	3790.02	3726.96	-893.92	40.5152256	-104.5885826	0.38	
10026.00	90.580	359.760	6905.78	3884.69	3821.95	-894.27	40.5154864	-104.5885804	0.26	
10121.00	89.660	359.410	6905.58	3979.40	3916.95	-894.96	40.5157471	-104.5885793	1.04	
10216.00	90.830	0.020	6905.17	4074.08	4011.94	-895.43	40.5160079	-104.5885775	1.39	
10310.00	89.750	359.260	6904.70	4167.78	4105.94	-896.02	40.5162659	-104.5885762	1.40	
10405.00	90.120	359.900	6904.81	4262.48	4200.94	-896.72	40.5165266	-104.5885751	0.78	
10500.00	89.970	359.280	6904.73	4357.19	4295.93	-897.40	40.5167874	-104.5885741	0.67	
10595.00	89.970	359.630	6904.78	4451.91	4390.93	-898.30	40.5170482	-104.5885738	0.37	
10689.00	89.600	358.860	6905.13	4545.66	4484.92	-899.54	40.5173062	-104.5885748	0.91	
10784.00	89.780	359.250	6905.65	4640.43	4579.90	-901.11	40.5175669	-104.5885769	0.45	
10879.00	89.780	359.260	6906.01	4735.17	4674.90	-902.34	40.5178277	-104.5885779	0.01	
10973.00	89.910	359.300	6906.27	4828.92	4768.89	-903.53	40.5180857	-104.5885786	0.14	
11068.00	89.880	359.460	6906.44	4923.65	4863.88	-904.55	40.5183465	-104.5885788	0.17	
11163.00	89.450	359.570	6907.00	5018.36	4958.88	-905.36	40.5186072	-104.5885782	0.47	
11257.00	89.820	359.200	6907.60	5112.09	5052.87	-906.37	40.5188652	-104.5885783	0.56	
11352.00	90.030	359.440	6907.72	5206.83	5147.86	-907.49	40.5191260	-104.5885789	0.34	
11447.00	89.260	359.360	6908.31	5301.56	5242.85	-908.49	40.5193867	-104.5885790	0.81	
11541.00	89.510	359.140	6909.32	5395.30	5336.84	-909.72	40.5196447	-104.5885799	0.35	
11636.00	90.060	0.330	6909.67	5489.98	5431.84	-910.16	40.5199055	-104.5885780	1.38	
11731.00	89.750	359.500	6909.83	5584.64	5526.84	-910.30	40.5201662	-104.5885750	0.93	
11826.00	89.820	359.620	6910.19	5679.35	5621.83	-911.03	40.5204270	-104.5885741	0.15	
11920.00	90.310	359.300	6910.08	5773.07	5715.83	-911.92	40.5206850	-104.5885738	0.62	
12015.00	89.970	359.570	6909.85	5867.80	5810.82	-912.85	40.5209457	-104.5885736	0.46	
12110.00	89.880	359.860	6909.97	5962.48	5905.82	-913.32	40.5212065	-104.5885718	0.32	
12205.00	90.090	359.100	6910.00	6057.20	6000.82	-914.19	40.5214673	-104.5885714	0.83	
12299.00	89.690	359.280	6910.18	6150.96	6094.81	-915.52	40.5217253	-104.5885727	0.47	
12394.00	90.550	0.050	6909.98	6245.65	6189.80	-916.07	40.5219860	-104.5885712	1.22	
12489.00	89.630	359.420	6909.83	6340.33	6284.80	-916.51	40.5222468	-104.5885693	1.17	
12583.00	89.750	359.440	6910.34	6434.06	6378.79	-917.45	40.5225048	-104.5885692	0.13	
12678.00	90.090	359.280	6910.47	6528.79	6473.79	-918.51	40.5227655	-104.5885695	0.40	
12773.00	90.250	359.740	6910.19	6623.51	6568.78	-919.32	40.5230263	-104.5885689	0.51	

REFERENCE WELLPATH IDENTIFICATION			
Operator	NOBLE ENERGY, INC	Well	BISHOP A06-731
Field	WELD COUNTY (NOBLE NAD 83 GRID)	API/Legal	05-123-52064
Facility	SEC.07-T06N-R64W	Wellbore	BISHOP A06-731 AWB
Slot	SLOT#22 BISHOP A06-731 (1009'FNL & 508'FEL,SEC.07)		

WELLPATH DATA (183 stations)

MD [ft]	Inclination [°]	Azimuth [°]	TVD [ft]	Vert Sect [ft]	North [ft]	East [ft]	Latitude	Longitude	DLS ["/100ft]	Comments
12867.00	89.690	359.430	6910.24	6717.21	6662.78	-920.00	40.5232843	-104.5885679	0.68	
12962.00	89.880	359.550	6910.60	6811.93	6757.78	-920.85	40.5235451	-104.5885674	0.24	
13057.00	89.910	359.330	6910.77	6906.65	6852.77	-921.77	40.5238058	-104.5885672	0.23	
13152.00	89.720	359.490	6911.08	7001.38	6947.77	-922.75	40.5240666	-104.5885672	0.26	
13246.00	89.690	359.590	6911.56	7095.09	7041.76	-923.51	40.5243246	-104.5885665	0.11	
13341.00	89.970	359.820	6911.84	7189.78	7136.76	-924.00	40.5245854	-104.5885647	0.38	
13436.00	90.620	359.740	6911.35	7284.46	7231.76	-924.36	40.5248461	-104.5885625	0.69	
13531.00	89.230	359.090	6911.48	7379.18	7326.75	-925.33	40.5251069	-104.5885625	1.62	
13625.00	89.910	359.750	6912.18	7472.91	7420.74	-926.28	40.5253649	-104.5885624	1.01	
13720.00	90.120	0.060	6912.16	7567.57	7515.74	-926.44	40.5256256	-104.5885595	0.39	
13815.00	90.060	0.050	6912.01	7662.21	7610.74	-926.35	40.5258864	-104.5885557	0.06	
14004.00	89.630	358.380	6912.52	7850.70	7799.71	-928.94	40.5264051	-104.5885580	0.91	
14099.00	89.880	358.780	6912.93	7945.52	7894.68	-931.29	40.5266658	-104.5885629	0.50	
14193.00	89.850	358.780	6913.15	8039.33	7988.66	-933.29	40.5269238	-104.5885667	0.03	
14288.00	89.940	358.440	6913.32	8134.15	8083.63	-935.60	40.5271846	-104.5885714	0.37	
14383.00	89.910	358.550	6913.45	8228.98	8178.60	-938.09	40.5274453	-104.5885769	0.12	
14477.00	89.820	358.450	6913.67	8322.81	8272.57	-940.55	40.5277033	-104.5885823	0.14	
14572.00	89.720	358.500	6914.05	8417.64	8367.53	-943.08	40.5279640	-104.5885879	0.12	
14667.00	89.690	358.620	6914.54	8512.46	8462.50	-945.47	40.5282247	-104.5885929	0.13	
14762.00	89.880	358.580	6914.89	8607.28	8557.47	-947.79	40.5284854	-104.5885978	0.20	
14856.00	89.820	358.550	6915.14	8701.10	8651.44	-950.14	40.5287434	-104.5886028	0.07	
15046.00	89.880	358.410	6915.64	8890.77	8841.38	-955.18	40.5292649	-104.5886139	0.08	
15140.00	89.970	358.710	6915.76	8984.59	8935.35	-957.55	40.5295229	-104.5886189	0.33	
15235.00	89.970	358.840	6915.81	9079.39	9030.33	-959.58	40.5297836	-104.5886227	0.14	
15330.00	89.880	358.490	6915.94	9174.20	9125.30	-961.79	40.5300443	-104.5886271	0.38	
15519.00	89.720	358.550	6916.60	9362.86	9314.24	-966.67	40.5305631	-104.5886377	0.09	
15614.00	90.250	358.850	6916.62	9457.67	9409.21	-968.83	40.5308238	-104.5886420	0.64	
15709.00	89.820	358.480	6916.56	9552.48	9504.18	-971.04	40.5310845	-104.5886464	0.60	
15804.00	89.970	358.710	6916.74	9647.30	9599.16	-973.37	40.5313453	-104.5886513	0.29	
15898.00	89.820	358.890	6916.91	9741.10	9693.13	-975.34	40.5316033	-104.5886549	0.25	
15993.00	89.940	358.540	6917.11	9835.91	9788.11	-977.47	40.5318640	-104.5886590	0.39	
16182.00	90.280	0.060	6916.74	10024.39	9977.09	-979.78	40.5323827	-104.5886604	0.82	
16277.00	90.280	0.720	6916.28	10118.97	10072.09	-979.13	40.5326435	-104.5886545	0.69	
16371.00	90.460	0.780	6915.67	10212.51	10166.08	-977.90	40.5329014	-104.5886466	0.20	
16466.00	90.250	0.490	6915.08	10307.06	10261.07	-976.85	40.5331621	-104.5886393	0.38	
16561.00	90.430	0.500	6914.52	10401.63	10356.06	-976.03	40.5334228	-104.5886328	0.19	
16655.00	90.310	0.640	6913.91	10495.20	10450.06	-975.09	40.5336808	-104.5886260	0.20	
16750.00	90.310	0.600	6913.40	10589.75	10545.05	-974.06	40.5339415	-104.5886188	0.04	
16845.00	90.180	0.490	6912.99	10684.32	10640.04	-973.16	40.5342022	-104.5886120	0.18	
16940.00	90.000	0.370	6912.84	10778.90	10735.04	-972.45	40.5344629	-104.5886060	0.23	
17034.00	90.310	0.520	6912.59	10872.49	10829.04	-971.72	40.5347208	-104.5885999	0.37	
17129.00	90.400	0.580	6912.00	10967.05	10924.03	-970.81	40.5349816	-104.5885931	0.11	
17224.00	90.120	0.480	6911.57	11061.62	11019.03	-969.93	40.5352423	-104.5885864	0.31	
17319.00	90.460	0.680	6911.09	11156.18	11114.02	-968.97	40.5355030	-104.5885794	0.42	
17413.00	90.400	0.400	6910.38	11249.74	11208.01	-968.08	40.5357609	-104.5885728	0.30	

REFERENCE WELLPATH IDENTIFICATION

Operator	NOBLE ENERGY, INC	Well	BISHOP A06-731
Field	WELD COUNTY (NOBLE NAD 83 GRID)	API/Legal	05-123-52064
Facility	SEC.07-T06N-R64W	Wellbore	BISHOP A06-731 AWB
Slot	SLOT#22 BISHOP A06-731 (1009'FNL & 508'FEL,SEC.07)		

WELLPATH DATA (183 stations) † = interpolated, ‡ = extrapolated station

MD [ft]	Inclination [°]	Azimuth [°]	TVD [ft]	Vert Sect [ft]	North [ft]	East [ft]	Latitude	Longitude	DLS [°/100ft]	Comments
17508.00	90.950	0.700	6909.26	11344.30	11303.00	-967.17	40.5360216	-104.5885660	0.66	
17539.00	90.430	0.140	6908.89	11375.16	11334.00	-966.94	40.5361067	-104.5885640	2.47	Last BH MWD Survey
17564.00‡	90.430	0.140	6908.70	11400.07	11359.00	-966.88	40.5361753	-104.5885629	0.00	Projection to Bit (201'FNL & 1438'FEL,SEC.31)

TARGETS

Name	TVD [ft]	North [ft]	East [ft]	Grid East [US ft]	Grid North [US ft]	Latitude	Longitude	Shape
OGDP 1 SEC.07-T06N-R64W	0.00	149.88	83.55	3254380.72	1428262.61	40.5053800	-104.5852000	polygon
	2D Polygon: dimensions not calculated							
OGDP1 SEC.06-T06N-R64W	18.00	168.31	-4168.81	3250128.51	1428281.04	40.5055500	-104.6004900	polygon
	2D Polygon: dimensions not calculated							
OGDP1 SEC.31-T07N-R64W	18.00	168.31	-4168.81	3250128.51	1428281.04	40.5055500	-104.6004900	polygon
	2D Polygon: dimensions not calculated							
BISHOP A06-731 BHL Rev-1 (200'FSL & 1452'FEL,SEC.31)	6912.00	11359.91	-980.48	3253316.72	1439472.25	40.5361782	-104.5886118	point
BISHOP A06-731 LP Rev-1 (200'FSL & 1383'FEL,SEC.06)	6912.00	1189.86	-884.73	3253412.46	1429302.55	40.5082618	-104.5886433	point
DP 136 Hardlines (200'FNL/FSL & 300'FEL/FWL)	7001.00	150.07	67.42	3254364.58	1428262.81	40.5053810	-104.5852580	polygon
	2D Polygon: dimensions not calculated							

WELLPATH COMPOSITION - Ref Wellbore: BISHOP A06-731 AWB Ref Wellpath: BISHOP A06-731 AWP

Start MD [ft]	End MD [ft]	Positional Uncertainty Model	Log Name/Comment	Wellbore	Survey Date
29.00	2005.00	OWSG MWD rev2 (MS+IFR1)	13.5" NaviTrak Surface OWSG MWD rev2 (MS + IFR1) <224'-2005'>	BISHOP A06-731 AWB	2/13/2024
2005.00	17564.00	OWSG MWD rev2 (MS+IFR1)	8.5" Lucida OWSG MWD rev2 (MS+IFR1) <2162'-17539'>	BISHOP A06-731 AWB	2/17/2024

REFERENCE WELLPATH IDENTIFICATION			
Operator	NOBLE ENERGY, INC	Well	BISHOP A06-731
Field	WELD COUNTY (NOBLE NAD 83 GRID)	API/Legal	05-123-52064
Facility	SEC.07-T06N-R64W	Wellbore	BISHOP A06-731 AWB
Slot	SLOT#22 BISHOP A06-731 (1009'FNL & 508'FEL,SEC.07)		

WELLPATH COMMENTS				
MD [ft]	Inclination [°]	Azimuth [°]	TVD [ft]	Comment
224.00	0.740	273.190	223.99	First BH MWD Survey
7393.66	88.933	359.165	6913.45	Cross 200' Hardline (200'FSL & 1365'FEL,SEC.06)
7396.00	88.976	359.163	6913.49	Shallowest MD for Perf
17539.00	90.430	0.140	6908.89	Last BH MWD Survey
17564.00	90.430	0.140	6908.70	Projection to Bit (201'FNL & 1438'FEL,SEC.31)