

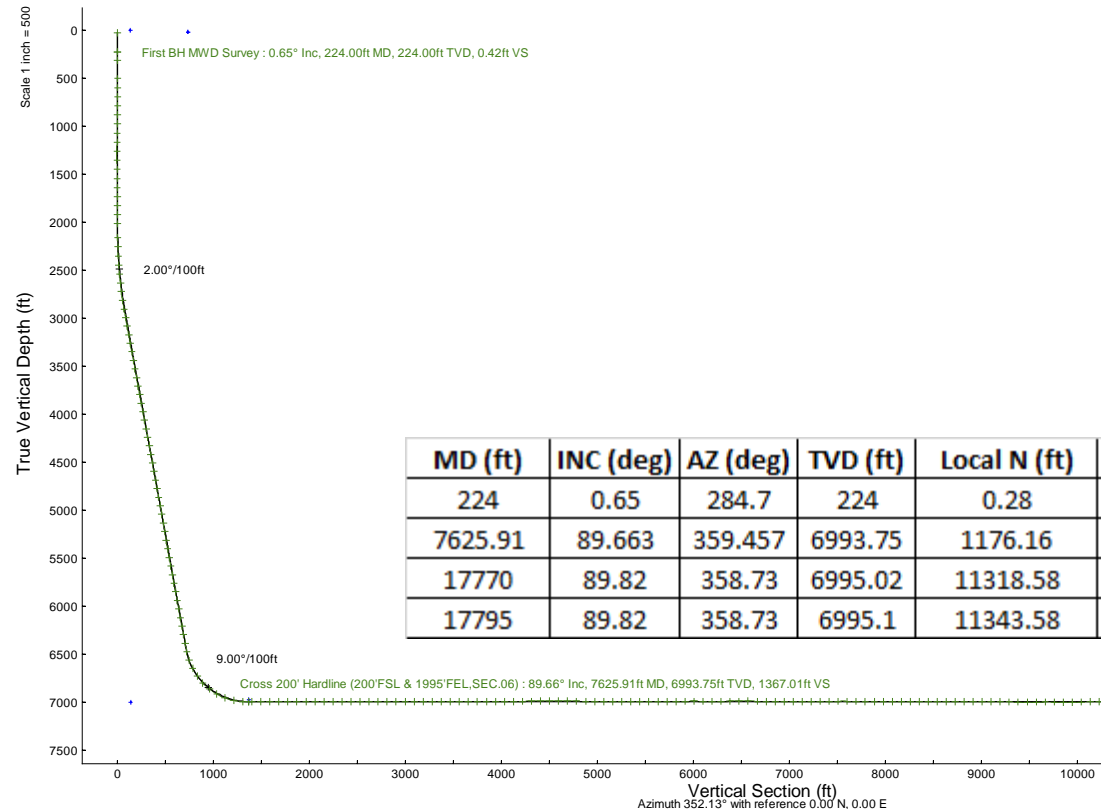
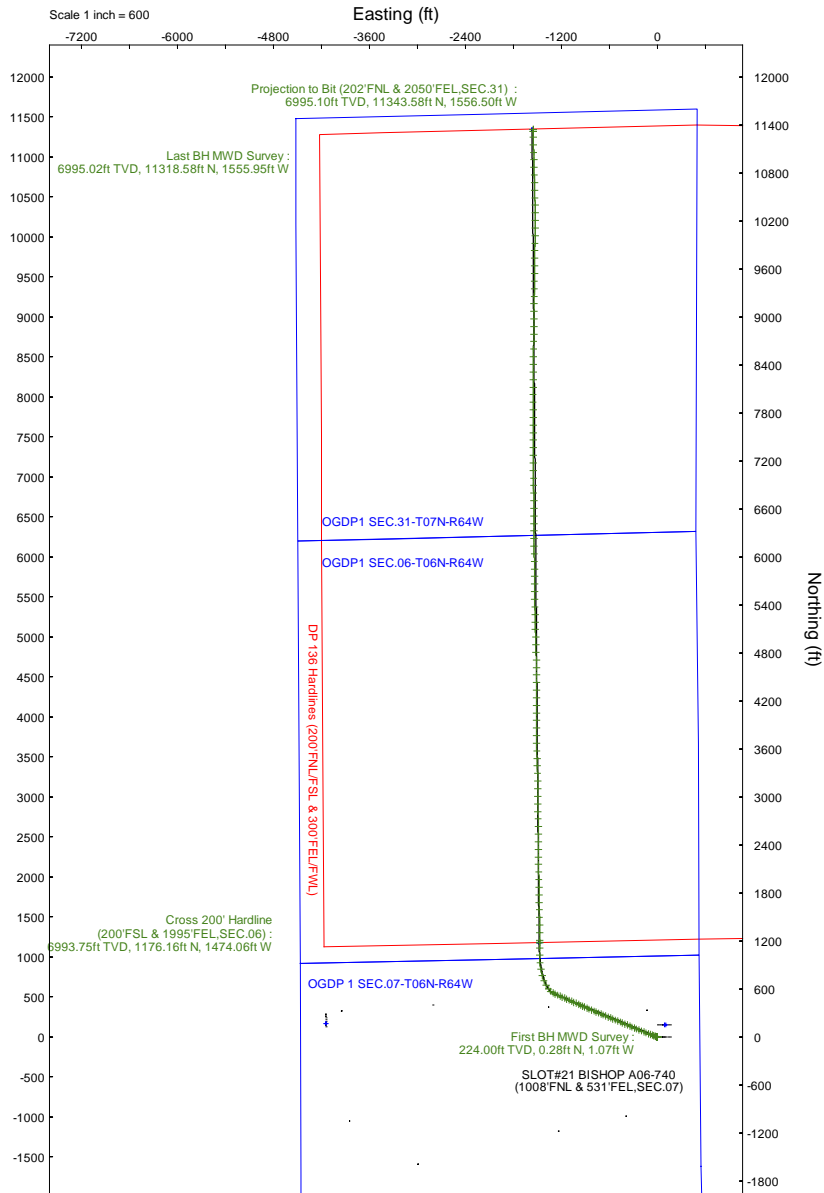
NOBLE ENERGY, INC

Location: COLORADO Slot: SLOT#21 BISHOP A06-740 (1008'FNL & 531'FEL,SEC.07)
 Field: WELD COUNTY (NOBLE NAD 83 GRID) Well: BISHOP A06-740
 Facility: SEC.07-T06N-R64W Wellbore: BISHOP A06-740 PWB

Plot reference wellpath is BISHOP A06-740 (REV-D.0) PWP	Grid System: NAD83 / Lambert Colorado SP, Northern Zone (501), US feet
True vertical depths are referenced to RIG (4743'GL+29'KB@4772'RKB) (RKB)	North Reference: Grid north
Reference wellpath measured depths are referenced to RIG (4743'GL+29'KB@4772'RKB) (RKB)	Scale: True distance
RIG (4743'GL+29'KB@4772'RKB) (RKB) to Mean Sea Level: 4772 feet	Coordinates are in feet referenced to Slot
Mean Sea Level to Ground level (At Slot: SLOT#21 BISHOP A06-740 (1008'FNL & 531'FEL,SEC.07)): 0 feet	Depths are in feet
Offset wellpath MDs are referenced to each path's default MD datum	Created by: matsam01 on 2024-04-30; Database: WA_Denver

Location Information

Facility Name	Grid East (US ft)	Grid North (US ft)	Latitude	Longitude		
SEC.07-T06N-R64W	3254380.716	1428262.611	40°30'19.3680"N	104°35'6.7200"W		
Slot	Local N (ft)	Local E (ft)	Grid East (US ft)	Grid North (US ft)	Latitude	Longitude
SLOT#21 BISHOP A06-740 (1008'FNL & 531'FEL,SEC.07)	-149.74	-106.08	3254274.639	1428112.873	40°30'17.8992"N	104°35'8.1132"W
RIG (4743'GL+29'KB@4772'RKB) (RKB) to Ground level (At Slot: SLOT#21 BISHOP A06-740 (1008'FNL & 531'FEL,SEC.07))					4772ft	
Mean Sea Level to Ground level (At Slot: SLOT#21 BISHOP A06-740 (1008'FNL & 531'FEL,SEC.07))					0ft	
RIG (4743'GL+29'KB@4772'RKB) (RKB) to Mean Sea Level					4772ft	



MD (ft)	INC (deg)	AZ (deg)	TVD (ft)	Local N (ft)	Local E (ft)	Comment
224	0.65	284.7	224	0.28	-1.07	First BH MWD Survey
7625.91	89.663	359.457	6993.75	1176.16	-1474.06	Cross 200' Hardline (200'FSL & 1995'FEL,SEC.06)
17770	89.82	358.73	6995.02	11318.58	-1555.95	Last BH MWD Survey
17795	89.82	358.73	6995.1	11343.58	-1556.5	Projection to Bit (202'FNL & 2050'FEL,SEC.31)

REFERENCE WELLPATH IDENTIFICATION

Operator	NOBLE ENERGY, INC	Well	BISHOP A06-740
Field	WELD COUNTY (NOBLE NAD 83 GRID)	API/Legal	05-123-52066
Facility	SEC.07-T06N-R64W	Wellbore	BISHOP A06-740 AWB
Slot	SLOT#21 BISHOP A06-740 (1008'FNL & 531'FEL,SEC.07)		

REPORT SETUP INFORMATION

Projection System	NAD83 / Lambert Colorado SP, Northern Zone (501), US feet	Software System	WellArchitect® 6.0
North Reference	Grid	User	Martsam01
Scale	0.999967	Report Generated	4/25/2024 at 11:20:14 PM
Convergence at slot	0.59° East	Database	WA_Denver

WELLPATH LOCATION

	Local coordinates		Grid coordinates		Geographic coordinates	
	North[ft]	East[ft]	Easting[US ft]	Northing[US ft]	Latitude	Longitude
Slot Location	-149.74	-106.08	3254274.64	1428112.87	40.5049720°	-104.5855870°
Facility Reference Pt			3254380.72	1428262.61	40.5053800°	-104.5852000°
Field Reference Pt			3000000.00	4454105.15	48.7761986°	-105.5000000°

WELLPATH DATUM

Calculation method	Minimum curvature	RIG (4743'GL+29'KB@4772'RKB) (RKB) to Facility Vertical Datum	4772.00ft
Horizontal Reference Pt	Slot	RIG (4743'GL+29'KB@4772'RKB) (RKB) to Mean Sea Level	4772.00ft
Vertical Reference Pt	RIG (4743'GL+29'KB@4772'RKB) (RKB)	RIG (4743'GL+29'KB@4772'RKB) (RKB) to Ground Level at Slot (SLOT#21 BISHOP A06-740 (1008'FNL & 531'FEL,SEC.07))	4772.00ft
MD Reference Pt	RIG (4743'GL+29'KB@4772'RKB) (RKB)	Section Origin	N 0.00, E 0.00 ft
Field Vertical Reference	Mean Sea Level	Section Azimuth	352.13°

REFERENCE WELLPATH IDENTIFICATION			
Operator	NOBLE ENERGY, INC	Well	BISHOP A06-740
Field	WELD COUNTY (NOBLE NAD 83 GRID)	API/Legal	05-123-52066
Facility	SEC.07-T06N-R64W	Wellbore	BISHOP A06-740 AWB
Slot	SLOT#21 BISHOP A06-740 (1008'FNL & 531'FEL,SEC.07)		

WELLPATH DATA (190 stations) † = interpolated, ‡ = extrapolated station

MD [ft]	Inclination [°]	Azimuth [°]	TVD [ft]	Vert Sect [ft]	North [ft]	East [ft]	Latitude	Longitude	DLS [°/100ft]	Comments
0.00†	0.000	284.700	0.00	0.00	0.00	0.00	40.5049720	-104.5855870	0.00	
29.00	0.000	284.700	29.00	0.00	0.00	0.00	40.5049720	-104.5855870	0.00	
224.00	0.650	284.700	224.00	0.42	0.28	-1.07	40.5049728	-104.5855908	0.33	First BH MWD Survey
314.00	0.620	296.500	313.99	0.90	0.63	-2.00	40.5049738	-104.5855942	0.15	
503.00	0.930	276.570	502.97	1.86	1.26	-4.44	40.5049756	-104.5856029	0.22	
598.00	1.250	264.780	597.96	2.10	1.25	-6.24	40.5049756	-104.5856094	0.41	
692.00	0.190	226.530	691.95	2.05	1.05	-7.37	40.5049751	-104.5856135	1.18	
787.00	0.470	164.780	786.95	1.57	0.57	-7.38	40.5049738	-104.5856135	0.44	
882.00	0.950	167.360	881.94	0.40	-0.58	-7.11	40.5049706	-104.5856126	0.51	
976.00	1.630	160.580	975.91	-1.68	-2.60	-6.49	40.5049651	-104.5856104	0.74	
1071.00	0.610	160.090	1070.89	-3.47	-4.30	-5.77	40.5049604	-104.5856079	1.10	
1166.00	0.680	102.820	1165.89	-4.12	-4.85	-4.94	40.5049588	-104.5856050	0.52	
1260.00	1.080	84.460	1259.88	-4.36	-4.88	-3.52	40.5049587	-104.5855998	0.52	
1355.00	0.130	10.080	1354.87	-4.29	-4.69	-2.61	40.5049592	-104.5855966	1.11	
1450.00	0.410	272.220	1449.87	-4.13	-4.57	-2.93	40.5049595	-104.5855977	0.47	
1544.00	0.720	285.630	1543.87	-3.83	-4.40	-3.83	40.5049600	-104.5856010	0.36	
1639.00	0.680	283.050	1638.86	-3.39	-4.11	-4.96	40.5049609	-104.5856050	0.05	
1734.00	0.800	283.230	1733.85	-2.95	-3.83	-6.15	40.5049617	-104.5856093	0.13	
1828.00	0.980	304.890	1827.84	-2.17	-3.22	-7.45	40.5049634	-104.5856139	0.40	
1923.00	0.740	303.720	1922.83	-1.21	-2.42	-8.63	40.5049656	-104.5856181	0.25	
2017.00	0.840	298.930	2016.82	-0.40	-1.75	-9.74	40.5049675	-104.5856221	0.13	
2162.00	2.270	293.110	2161.76	1.72	-0.11	-13.31	40.5049721	-104.5856349	0.99	
2257.00	4.390	289.200	2256.60	4.34	1.83	-18.47	40.5049775	-104.5856534	2.24	
2352.00	6.310	291.850	2351.18	8.59	4.97	-26.75	40.5049864	-104.5856830	2.04	
2447.00	7.990	292.380	2445.44	14.50	9.42	-37.70	40.5049989	-104.5857222	1.77	
2541.00	9.870	291.550	2538.29	21.75	14.87	-51.24	40.5050143	-104.5857707	2.00	
2636.00	12.230	291.340	2631.53	30.66	21.53	-68.19	40.5050330	-104.5858314	2.48	
2730.00	14.790	290.850	2722.92	41.29	29.42	-88.68	40.5050553	-104.5859048	2.73	
2825.00	17.480	290.450	2814.17	53.89	38.72	-113.38	40.5050815	-104.5859933	2.83	
2920.00	20.240	291.740	2904.06	68.78	49.80	-142.02	40.5051127	-104.5860958	2.94	
3015.00	19.890	292.400	2993.29	85.05	62.04	-172.22	40.5051472	-104.5862040	0.44	
3109.00	20.020	291.870	3081.65	101.09	74.13	-201.94	40.5051812	-104.5863104	0.24	
3204.00	20.020	291.950	3170.91	117.25	86.26	-232.11	40.5052153	-104.5864184	0.03	
3299.00	19.890	292.810	3260.20	133.58	98.61	-262.09	40.5052501	-104.5865258	0.34	
3394.00	18.890	293.420	3349.82	149.82	110.99	-291.10	40.5052849	-104.5866296	1.07	
3488.00	20.040	292.700	3438.44	165.92	123.25	-319.92	40.5053193	-104.5867328	1.25	
3583.00	19.770	292.550	3527.77	182.33	135.69	-349.78	40.5053543	-104.5868397	0.29	
3678.00	18.860	292.890	3617.42	198.32	147.83	-378.76	40.5053885	-104.5869435	0.97	
3772.00	20.420	292.740	3705.95	214.44	160.07	-407.88	40.5054229	-104.5870477	1.66	
3867.00	20.210	292.740	3795.04	231.24	172.82	-438.30	40.5054587	-104.5871566	0.22	
3962.00	20.170	292.840	3884.20	247.96	185.52	-468.53	40.5054945	-104.5872649	0.06	
4057.00	20.300	292.640	3973.34	264.70	198.23	-498.84	40.5055302	-104.5873734	0.16	
4151.00	20.190	292.610	4061.53	281.20	210.74	-528.86	40.5055654	-104.5874809	0.12	
4246.00	20.080	292.910	4150.72	297.87	223.39	-559.01	40.5056009	-104.5875888	0.16	
4341.00	20.230	292.780	4239.91	314.59	236.10	-589.18	40.5056367	-104.5876968	0.16	

REFERENCE WELLPATH IDENTIFICATION			
Operator	NOBLE ENERGY, INC	Well	BISHOP A06-740
Field	WELD COUNTY (NOBLE NAD 83 GRID)	API/Legal	05-123-52066
Facility	SEC.07-T06N-R64W	Wellbore	BISHOP A06-740 AWB
Slot	SLOT#21 BISHOP A06-740 (1008'FNL & 531'FEL,SEC.07)		

WELLPATH DATA (190 stations) † = interpolated, ‡ = extrapolated station

MD [ft]	Inclination [°]	Azimuth [°]	TVD [ft]	Vert Sect [ft]	North [ft]	East [ft]	Latitude	Longitude	DLS ["/100ft]	Comments
4436.00	20.120	292.930	4329.08	331.33	248.82	-619.37	40.5056725	-104.5878049	0.13	
4530.00	19.430	292.640	4417.53	347.55	261.14	-648.69	40.5057071	-104.5879099	0.74	
4625.00	19.640	292.640	4507.06	363.68	273.37	-678.01	40.5057415	-104.5880149	0.22	
4720.00	19.860	292.910	4596.48	380.04	285.80	-707.61	40.5057764	-104.5881208	0.25	
4814.00	19.470	292.540	4684.99	396.15	298.02	-736.79	40.5058108	-104.5882253	0.44	
4909.00	19.580	292.550	4774.53	412.22	310.19	-766.11	40.5058450	-104.5883303	0.12	
5004.00	19.690	293.020	4864.01	428.50	322.55	-795.54	40.5058798	-104.5884357	0.20	
5099.00	19.600	291.550	4953.48	444.55	334.67	-825.09	40.5059139	-104.5885415	0.53	
5193.00	19.830	293.850	5041.97	460.67	346.90	-854.34	40.5059483	-104.5886462	0.86	
5288.00	19.050	294.110	5131.55	477.36	359.75	-883.23	40.5059844	-104.5887496	0.83	
5383.00	17.050	294.350	5221.87	493.00	371.83	-910.07	40.5060183	-104.5888457	2.11	
5478.00	16.600	294.400	5312.81	507.67	383.18	-935.12	40.5060501	-104.5889353	0.47	
5572.00	18.550	293.530	5402.41	522.64	394.69	-961.06	40.5060825	-104.5890282	2.09	
5667.00	19.880	293.470	5492.12	538.91	407.16	-989.73	40.5061175	-104.5891308	1.40	
5762.00	18.750	293.490	5581.77	555.26	419.68	-1018.55	40.5061527	-104.5892340	1.19	
5857.00	19.780	293.820	5671.45	571.65	432.26	-1047.26	40.5061880	-104.5893368	1.09	
5952.00	19.930	293.510	5760.80	588.53	445.21	-1076.81	40.5062244	-104.5894425	0.19	
6046.00	19.780	294.050	5849.22	605.29	458.08	-1106.03	40.5062605	-104.5895471	0.25	
6141.00	18.840	293.980	5938.87	621.88	470.87	-1134.72	40.5062964	-104.5896498	0.99	
6236.00	19.990	293.650	6028.47	638.47	483.62	-1163.61	40.5063322	-104.5897532	1.22	
6331.00	19.630	293.830	6117.84	655.34	496.58	-1193.08	40.5063686	-104.5898587	0.38	
6425.00	18.970	293.680	6206.56	671.64	509.09	-1221.52	40.5064038	-104.5899605	0.70	
6520.00	19.510	293.690	6296.25	688.02	521.67	-1250.19	40.5064391	-104.5900632	0.57	
6615.00	19.400	293.550	6385.83	704.55	534.35	-1279.18	40.5064747	-104.5901669	0.13	
6710.00	20.710	297.010	6475.07	722.39	548.28	-1308.61	40.5065138	-104.5902722	1.86	
6805.00	23.600	314.670	6563.15	747.12	569.31	-1337.14	40.5065723	-104.5903741	7.61	
6899.00	30.580	322.250	6646.81	782.85	601.49	-1365.20	40.5066614	-104.5904738	8.27	
6994.00	37.120	329.760	6725.70	830.38	645.43	-1394.48	40.5067829	-104.5905774	8.16	
7089.00	43.160	337.670	6798.33	888.45	700.34	-1421.30	40.5069343	-104.5906719	8.31	
7184.00	52.460	345.070	6862.11	957.49	766.98	-1443.41	40.5071179	-104.5907489	11.35	
7278.00	59.780	350.200	6914.50	1035.21	843.15	-1459.96	40.5073274	-104.5908056	9.01	
7373.00	69.160	355.210	6955.42	1120.79	928.07	-1470.68	40.5075608	-104.5908410	10.96	
7468.00	78.060	0.120	6982.22	1211.38	1019.01	-1474.30	40.5078105	-104.5908507	10.60	
7563.00	88.920	0.320	6992.97	1304.68	1113.25	-1473.94	40.5080692	-104.5908459	11.43	
7625.91†	89.663	359.457	6993.75	1367.01	1176.16	-1474.06	40.5082418	-104.5908440	1.81	Cross 200' Hardline (200'FSL & 1995'FEL,SEC.06)
7628.00†	89.688	359.428	6993.76	1369.08	1178.25	-1474.08	40.5082475	-104.5908440	1.81	Shallowest MD for Perf
7657.00	90.030	359.030	6993.83	1397.86	1207.25	-1474.47	40.5083271	-104.5908444	1.81	
7752.00	90.000	359.440	6993.81	1492.13	1302.24	-1475.74	40.5085879	-104.5908454	0.43	
7847.00	90.460	359.500	6993.43	1586.35	1397.23	-1476.62	40.5088487	-104.5908451	0.49	
7942.00	90.460	359.350	6992.66	1680.58	1492.22	-1477.57	40.5091094	-104.5908450	0.16	
8036.00	90.220	359.220	6992.11	1773.84	1586.21	-1478.74	40.5093674	-104.5908458	0.29	
8131.00	90.120	359.290	6991.82	1868.11	1681.21	-1479.98	40.5096282	-104.5908467	0.13	
8226.00	89.320	358.090	6992.29	1962.48	1776.18	-1482.15	40.5098889	-104.5908510	1.52	
8321.00	90.000	359.490	6992.85	2056.83	1871.15	-1484.16	40.5101496	-104.5908547	1.64	
8415.00	89.880	359.280	6992.95	2150.08	1965.15	-1485.16	40.5104077	-104.5908549	0.26	

REFERENCE WELLPATH IDENTIFICATION			
Operator	NOBLE ENERGY, INC	Well	BISHOP A06-740
Field	WELD COUNTY (NOBLE NAD 83 GRID)	API/Legal	05-123-52066
Facility	SEC.07-T06N-R64W	Wellbore	BISHOP A06-740 AWB
Slot	SLOT#21 BISHOP A06-740 (1008'FNL & 531'FEL,SEC.07)		

WELLPATH DATA (190 stations)

MD [ft]	Inclination [°]	Azimuth [°]	TVD [ft]	Vert Sect [ft]	North [ft]	East [ft]	Latitude	Longitude	DLS ["/100ft]	Comments
8510.00	90.120	359.420	6992.95	2244.33	2060.14	-1486.24	40.5106684	-104.5908553	0.29	
8605.00	89.880	359.160	6992.95	2338.58	2155.13	-1487.42	40.5109292	-104.5908560	0.37	
8699.00	89.690	359.220	6993.30	2431.87	2249.12	-1488.75	40.5111872	-104.5908573	0.21	
8794.00	89.970	359.350	6993.59	2526.13	2344.11	-1489.93	40.5114479	-104.5908581	0.32	
8889.00	90.150	359.660	6993.49	2620.34	2439.11	-1490.75	40.5117087	-104.5908575	0.38	
8984.00	90.090	359.260	6993.29	2714.56	2534.11	-1491.65	40.5119695	-104.5908572	0.43	
9079.00	90.520	359.630	6992.78	2808.79	2629.10	-1492.57	40.5122302	-104.5908570	0.60	
9173.00	90.650	359.260	6991.82	2902.02	2723.09	-1493.48	40.5124882	-104.5908568	0.42	
9268.00	89.690	358.960	6991.54	2996.31	2818.08	-1494.96	40.5127490	-104.5908586	1.06	
9363.00	90.060	359.450	6991.75	3090.59	2913.07	-1496.27	40.5130097	-104.5908599	0.65	
9458.00	90.000	358.990	6991.70	3184.86	3008.06	-1497.57	40.5132705	-104.5908610	0.49	
9552.00	89.480	359.100	6992.12	3278.17	3102.04	-1499.13	40.5135285	-104.5908632	0.57	
9647.00	90.280	359.460	6992.32	3372.43	3197.04	-1500.33	40.5137893	-104.5908640	0.92	
9742.00	90.060	358.920	6992.04	3466.71	3292.03	-1501.67	40.5140500	-104.5908653	0.61	
9837.00	89.540	358.890	6992.37	3561.05	3387.01	-1503.49	40.5143108	-104.5908683	0.55	
9931.00	89.320	357.100	6993.31	3654.54	3480.94	-1506.77	40.5145687	-104.5908767	1.92	
10026.00	89.970	358.930	6993.90	3749.04	3575.88	-1510.06	40.5148293	-104.5908850	2.04	
10121.00	90.000	359.380	6993.92	3843.32	3670.87	-1511.47	40.5150901	-104.5908866	0.47	
10216.00	90.090	359.300	6993.85	3937.57	3765.86	-1512.56	40.5153508	-104.5908870	0.13	
10311.00	90.550	0.150	6993.32	4031.73	3860.86	-1513.02	40.5156116	-104.5908851	1.02	
10405.00	90.430	359.820	6992.51	4124.85	3954.85	-1513.04	40.5158696	-104.5908818	0.37	
10500.00	91.050	0.340	6991.29	4218.92	4049.84	-1512.91	40.5161303	-104.5908778	0.85	
10595.00	90.800	0.170	6989.75	4312.96	4144.83	-1512.49	40.5163910	-104.5908728	0.32	
10690.00	89.940	0.270	6989.14	4407.01	4239.83	-1512.12	40.5166517	-104.5908679	0.91	
10784.00	90.180	0.110	6989.04	4500.08	4333.83	-1511.81	40.5169097	-104.5908634	0.31	
10879.00	90.280	359.880	6988.66	4594.18	4428.83	-1511.82	40.5171705	-104.5908599	0.26	
10973.00	89.020	359.470	6989.23	4687.36	4522.82	-1512.35	40.5174285	-104.5908583	1.41	
11068.00	89.630	358.770	6990.35	4781.65	4617.80	-1513.81	40.5176892	-104.5908601	0.98	
11163.00	89.200	358.190	6991.32	4876.06	4712.76	-1516.33	40.5179499	-104.5908656	0.76	
11258.00	89.450	358.570	6992.44	4970.49	4807.72	-1519.01	40.5182106	-104.5908718	0.48	
11352.00	89.480	358.360	6993.32	5063.91	4901.68	-1521.53	40.5184686	-104.5908774	0.23	
11447.00	89.380	358.310	6994.26	5158.35	4996.64	-1524.29	40.5187293	-104.5908838	0.12	
11542.00	90.220	358.460	6994.60	5252.78	5091.60	-1526.97	40.5189900	-104.5908899	0.90	
11636.00	90.280	358.600	6994.19	5346.19	5185.56	-1529.38	40.5192480	-104.5908952	0.16	
11731.00	90.490	358.790	6993.55	5440.57	5280.54	-1531.54	40.5195087	-104.5908994	0.30	
11826.00	90.120	358.200	6993.04	5534.98	5375.50	-1534.04	40.5197694	-104.5909049	0.73	
11921.00	89.910	359.640	6993.02	5629.31	5470.48	-1535.83	40.5200302	-104.5909078	1.53	
12015.00	89.970	359.570	6993.11	5722.51	5564.48	-1536.48	40.5202882	-104.5909067	0.10	
12110.00	90.460	358.980	6992.76	5816.77	5659.47	-1537.68	40.5205489	-104.5909075	0.81	
12205.00	91.260	359.700	6991.33	5911.00	5754.45	-1538.77	40.5208097	-104.5909080	1.13	
12300.00	89.850	359.160	6990.41	6005.23	5849.44	-1539.72	40.5210704	-104.5909079	1.59	
12394.00	89.660	359.120	6990.81	6098.52	5943.43	-1541.13	40.5213284	-104.5909095	0.21	
12489.00	90.250	359.140	6990.89	6192.81	6038.42	-1542.57	40.5215892	-104.5909112	0.62	
12584.00	90.060	359.530	6990.63	6287.06	6133.41	-1543.68	40.5218499	-104.5909116	0.46	
12678.00	90.180	359.940	6990.43	6380.23	6227.41	-1544.11	40.5221079	-104.5909097	0.45	

REFERENCE WELLPATH IDENTIFICATION			
Operator	NOBLE ENERGY, INC	Well	BISHOP A06-740
Field	WELD COUNTY (NOBLE NAD 83 GRID)	API/Legal	05-123-52066
Facility	SEC.07-T06N-R64W	Wellbore	BISHOP A06-740 AWB
Slot	SLOT#21 BISHOP A06-740 (1008'FNL & 531'FEL,SEC.07)		

WELLPATH DATA (190 stations)

MD [ft]	Inclination [°]	Azimuth [°]	TVD [ft]	Vert Sect [ft]	North [ft]	East [ft]	Latitude	Longitude	DLS [°/100ft]	Comments
12773.00	90.340	359.900	6990.00	6474.35	6322.41	-1544.24	40.5223687	-104.5909067	0.17	
12868.00	90.280	359.820	6989.49	6568.49	6417.41	-1544.48	40.5226294	-104.5909040	0.11	
12963.00	87.910	358.350	6990.99	6662.77	6512.37	-1545.99	40.5228901	-104.5909060	2.94	
13057.00	90.060	359.730	6992.66	6756.06	6606.34	-1547.57	40.5231481	-104.5909082	2.72	
13152.00	89.850	359.330	6992.73	6850.27	6701.34	-1548.34	40.5234088	-104.5909075	0.48	
13246.00	90.120	359.220	6992.75	6943.54	6795.33	-1549.53	40.5236668	-104.5909083	0.31	
13341.00	90.180	359.670	6992.51	7037.76	6890.32	-1550.45	40.5239276	-104.5909081	0.48	
13436.00	90.400	0.000	6992.03	7131.90	6985.32	-1550.73	40.5241884	-104.5909056	0.42	
13531.00	90.220	359.700	6991.51	7226.04	7080.32	-1550.98	40.5244491	-104.5909030	0.37	
13626.00	90.180	359.860	6991.18	7320.19	7175.32	-1551.34	40.5247099	-104.5909008	0.17	
13720.00	90.090	359.660	6990.96	7413.36	7269.32	-1551.74	40.5249679	-104.5908987	0.23	
13815.00	90.340	0.700	6990.60	7507.42	7364.31	-1551.44	40.5252286	-104.5908941	1.13	
13909.00	89.690	359.300	6990.58	7600.53	7458.31	-1551.44	40.5254866	-104.5908907	1.64	
14004.00	89.820	359.640	6990.98	7694.75	7553.31	-1552.32	40.5257473	-104.5908903	0.38	
14099.00	89.230	359.020	6991.77	7789.00	7648.30	-1553.43	40.5260081	-104.5908908	0.90	
14194.00	89.570	359.200	6992.77	7883.29	7743.28	-1554.90	40.5262688	-104.5908926	0.40	
14288.00	89.720	359.540	6993.35	7976.54	7837.27	-1555.94	40.5265268	-104.5908929	0.40	
14383.00	89.910	359.240	6993.65	8070.77	7932.26	-1556.95	40.5267876	-104.5908930	0.37	
14478.00	90.030	0.690	6993.70	8164.88	8027.26	-1557.01	40.5270483	-104.5908897	1.53	
14572.00	89.600	0.630	6994.01	8257.84	8121.26	-1555.92	40.5273063	-104.5908824	0.46	
14667.00	89.880	0.670	6994.44	8351.79	8216.25	-1554.84	40.5275670	-104.5908750	0.30	
14762.00	90.090	1.270	6994.46	8445.66	8311.23	-1553.24	40.5278276	-104.5908657	0.67	
14857.00	89.540	0.460	6994.77	8539.56	8406.22	-1551.80	40.5280883	-104.5908570	1.03	
14951.00	89.720	0.260	6995.38	8632.58	8500.22	-1551.21	40.5283463	-104.5908514	0.29	
15046.00	89.940	0.730	6995.66	8726.57	8595.21	-1550.39	40.5286070	-104.5908450	0.55	
15141.00	90.060	0.530	6995.66	8820.53	8690.21	-1549.35	40.5288677	-104.5908377	0.25	
15235.00	90.090	1.200	6995.54	8913.44	8784.20	-1547.93	40.5291256	-104.5908292	0.71	
15330.00	89.850	0.550	6995.59	9007.33	8879.18	-1546.48	40.5293863	-104.5908204	0.73	
15425.00	89.910	0.640	6995.79	9101.29	8974.18	-1545.49	40.5296470	-104.5908134	0.11	
15520.00	89.720	0.700	6996.09	9195.24	9069.17	-1544.38	40.5299077	-104.5908059	0.21	
15614.00	89.420	0.330	6996.80	9288.23	9163.17	-1543.53	40.5301657	-104.5907994	0.51	
15709.00	90.030	1.400	6997.25	9382.12	9258.15	-1542.10	40.5304263	-104.5907907	1.30	
15804.00	89.660	359.590	6997.51	9476.11	9353.14	-1541.28	40.5306870	-104.5907843	1.94	
15899.00	90.120	0.830	6997.69	9570.16	9448.14	-1540.93	40.5309478	-104.5907795	1.39	
15993.00	90.580	1.470	6997.12	9663.00	9542.12	-1539.04	40.5312056	-104.5907692	0.84	
16087.00	88.610	359.930	6997.78	9755.94	9636.10	-1537.90	40.5314636	-104.5907616	2.66	
16183.00	89.780	0.680	6999.13	9850.95	9732.09	-1537.39	40.5317270	-104.5907563	1.45	
16278.00	90.890	1.160	6998.58	9944.83	9827.07	-1535.86	40.5319877	-104.5907473	1.27	
16372.00	90.680	2.110	6997.29	10037.53	9921.03	-1533.18	40.5322455	-104.5907342	1.03	
16467.00	91.170	1.070	6995.75	10131.22	10015.97	-1530.54	40.5325060	-104.5907212	1.21	
16562.00	91.320	0.570	6993.69	10225.10	10110.94	-1529.18	40.5327666	-104.5907128	0.55	
16656.00	89.630	359.050	6992.91	10318.25	10204.93	-1529.50	40.5330246	-104.5907104	2.42	
16751.00	90.920	359.680	6992.46	10412.49	10299.92	-1530.55	40.5332853	-104.5907107	1.51	
16846.00	89.880	358.610	6991.79	10506.77	10394.91	-1531.97	40.5335461	-104.5907123	1.57	
16940.00	89.850	358.590	6992.01	10600.17	10488.88	-1534.26	40.5338041	-104.5907171	0.04	

REFERENCE WELLPATH IDENTIFICATION			
Operator	NOBLE ENERGY, INC	Well	BISHOP A06-740
Field	WELD COUNTY (NOBLE NAD 83 GRID)	API/Legal	05-123-52066
Facility	SEC.07-T06N-R64W	Wellbore	BISHOP A06-740 AWB
Slot	SLOT#21 BISHOP A06-740 (1008'FNL & 531'FEL,SEC.07)		

WELLPATH DATA (190 stations) † = interpolated, ‡ = extrapolated station										
MD [ft]	Inclination [°]	Azimuth [°]	TVD [ft]	Vert Sect [ft]	North [ft]	East [ft]	Latitude	Longitude	DLS [°/100ft]	Comments
17035.00	90.060	358.320	6992.09	10694.59	10583.84	-1536.82	40.5340648	-104.5907228	0.36	
17130.00	89.850	358.570	6992.16	10789.02	10678.81	-1539.40	40.5343255	-104.5907286	0.34	
17225.00	89.970	358.420	6992.31	10883.43	10773.78	-1541.90	40.5345862	-104.5907341	0.20	
17319.00	89.720	358.430	6992.57	10976.86	10867.74	-1544.48	40.5348442	-104.5907399	0.27	
17414.00	89.690	358.320	6993.06	11071.30	10962.70	-1547.17	40.5351049	-104.5907461	0.12	
17509.00	89.880	358.990	6993.41	11165.68	11057.67	-1549.40	40.5353657	-104.5907506	0.73	
17604.00	89.350	358.090	6994.05	11260.08	11152.64	-1551.82	40.5356264	-104.5907558	1.10	
17699.00	89.780	358.790	6994.77	11354.50	11247.60	-1554.41	40.5358871	-104.5907616	0.86	
17770.00	89.820	358.730	6995.02	11425.03	11318.58	-1555.95	40.5360820	-104.5907645	0.10	Last BH MWD Survey
17795.00‡	89.820	358.730	6995.10	11449.86	11343.58	-1556.50	40.5361506	-104.5907656	0.00	Projection to Bit (202'FNL & 2050'FEL,SEC.31)

TARGETS								
Name	TVD [ft]	North [ft]	East [ft]	Grid East [US ft]	Grid North [US ft]	Latitude	Longitude	Shape
OGDP 1 SEC.07-T06N-R64W	0.00	149.74	106.08	3254380.72	1428262.61	40.5053800	-104.5852000	polygon
2D Polygon: dimensions not calculated								
OGDP1 SEC.06-T06N-R64W	18.00	168.18	-4146.28	3250128.51	1428281.04	40.5055500	-104.6004900	polygon
2D Polygon: dimensions not calculated								
OGDP1 SEC.31-T07N-R64W	18.00	168.18	-4146.28	3250128.51	1428281.04	40.5055500	-104.6004900	polygon
2D Polygon: dimensions not calculated								
BISHOP A06-740 BHL Rev-1 (200'FSL & 2063'FEL,SEC.31)	6972.00	11345.17	-1569.05	3252705.65	1439457.65	40.5361553	-104.5908107	point
BISHOP A06-740 LP Rev-1 (200'FSL & 2003'FEL,SEC.06)	6972.00	1176.16	-1481.92	3252792.77	1429288.99	40.5082420	-104.5908723	point
BISHOP A06-740 BHL Rev-2 (200'FSL & 2063'FEL,SEC.31)	6994.00	11345.17	-1569.05	3252705.65	1439457.65	40.5361553	-104.5908107	point
BISHOP A06-740 LP Rev-2 (200'FSL & 2003'FEL,SEC.06)	6994.00	1176.16	-1481.92	3252792.77	1429288.99	40.5082420	-104.5908723	point
DP 136 Hardlines (200'FNL/FSL & 300'FEL/FWL)	7001.00	149.94	89.95	3254364.58	1428262.81	40.5053810	-104.5852580	polygon
2D Polygon: dimensions not calculated								

REFERENCE WELLPATH IDENTIFICATION			
Operator	NOBLE ENERGY, INC	Well	BISHOP A06-740
Field	WELD COUNTY (NOBLE NAD 83 GRID)	API/Legal	
Facility	SEC.07-T06N-R64W	Wellbore	BISHOP A06-740 AWB
Slot	SLOT#21 BISHOP A06-740 (1008'FNL & 531'FEL,SEC.07)		

WELLPATH COMPOSITION - Ref Wellbore: BISHOP A06-740 AWB Ref Wellpath: BISHOP A06-740 AWP					
Start MD [ft]	End MD [ft]	Positional Uncertainty Model	Log Name/Comment	Wellbore	Survey Date
29.00	2017.00	OWSG MWD rev2 (MS+IFR1)	13.5" NaviTrak Surface OWSG MWD rev2 (MS + IFR1) <224'-2017'>	BISHOP A06-740 AWB	2/13/2024
2017.00	17795.00	OWSG MWD rev2 (MS+IFR1)	8.5" Lucida OWSG MWD rev2 (MS+IFR1) <2162'-17770'>	BISHOP A06-740 AWB	2/14/2024

REFERENCE WELLPATH IDENTIFICATION			
Operator	NOBLE ENERGY, INC	Well	BISHOP A06-740
Field	WELD COUNTY (NOBLE NAD 83 GRID)	API/Legal	
Facility	SEC.07-T06N-R64W	Wellbore	BISHOP A06-740 AWB
Slot	SLOT#21 BISHOP A06-740 (1008'FNL & 531'FEL,SEC.07)		

WELLPATH COMMENTS				
MD [ft]	Inclination [°]	Azimuth [°]	TVD [ft]	Comment
224.00	0.650	284.700	224.00	First BH MWD Survey
7625.91	89.663	359.457	6993.75	Cross 200' Hardline (200'FSL & 1995'FEL,SEC.06)
7628.00	89.688	359.428	6993.76	Shallowest MD for Perf
17770.00	89.820	358.730	6995.02	Last BH MWD Survey
17795.00	89.820	358.730	6995.10	Projection to Bit (202'FNL & 2050'FEL,SEC.31)