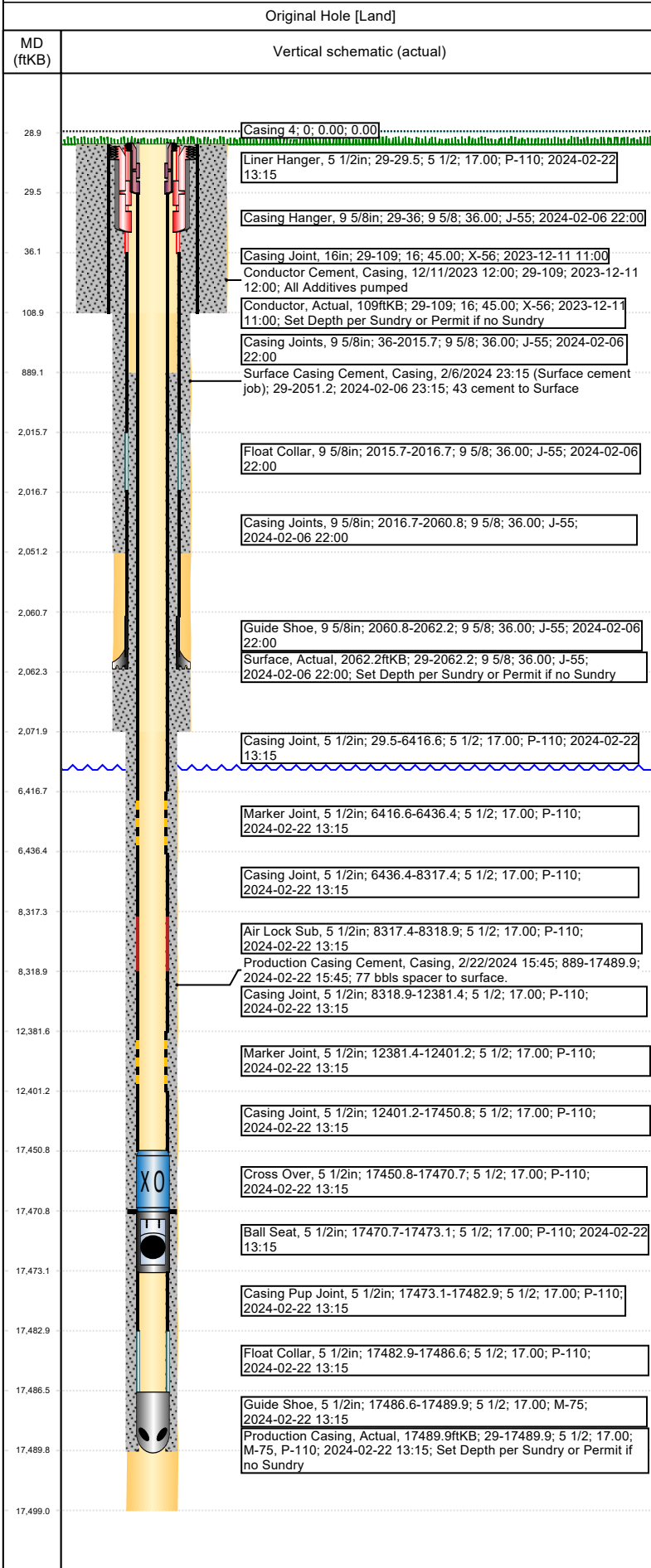




Wellbore Schematic Input Report

Well Name: BISHOP A06-722



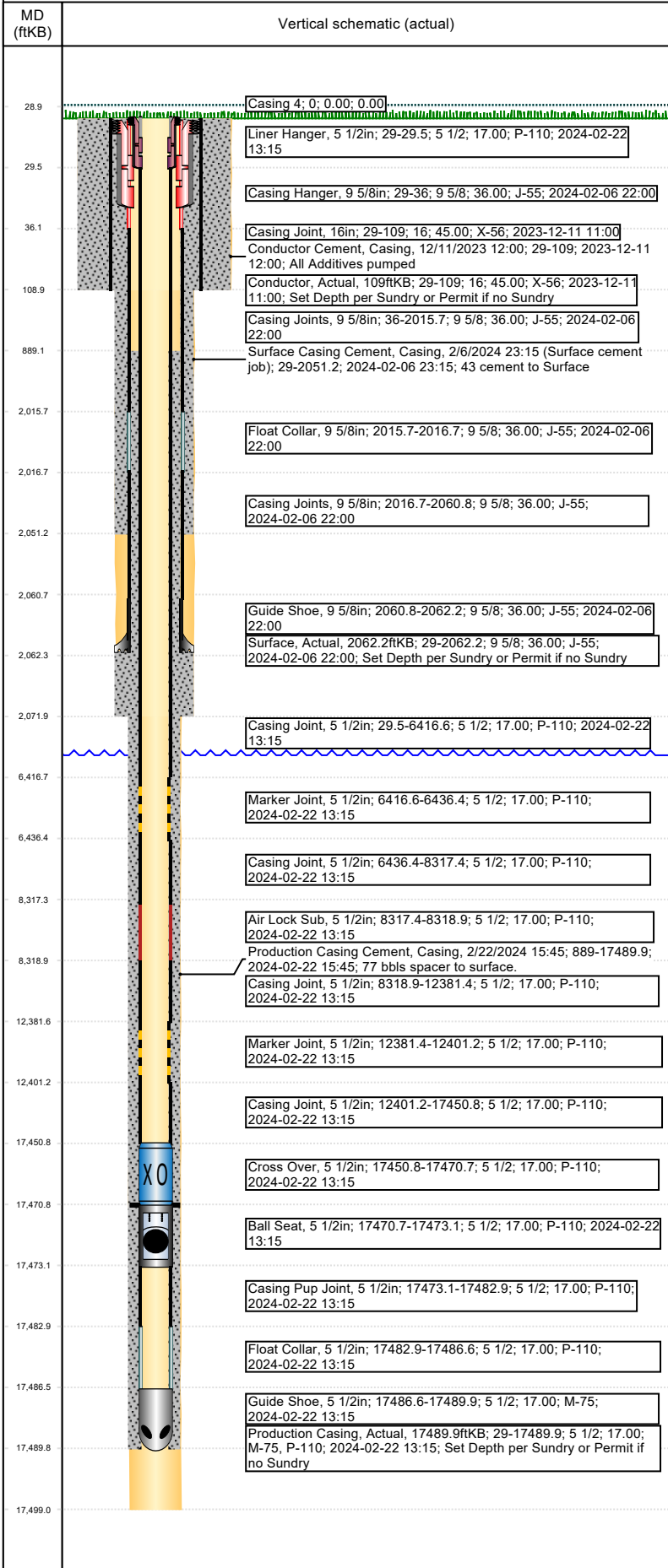
Well Header						
Surface UWI 0512352065		Asset Team		Production Tree Location Land		
Original RKB Elevation (ft) 4,773.00		Original KB to Ground (ft) 29.00		Original Spud Date 2/6/2024		Abandon Date
Range			Well Sub-Status PW		High Pressure N	
Directions To Well HWY 392 & CR 51, N 1 6/10, W ONTO ACCESS RD, 4/10 MILE AROUND FACILITY, NE INTO LOCATION				Latitude (°) 40.504976		Longitude (°) -104.585445
Comment Approved Sundry for SHL and TD changes, see Doc# 403557162. OPEN HOLE LOGGING EXCEPTION: One of the first wells drilled on the pad during the first rig occupation will be logged with cased-hole neutron log with gamma-ray log from the kick-off point into the surface casing. The horizontal portion of every well will be logged with a measured-while-drilling gamma-ray log. See Approved Permit under COAs/BMPs for details.						
Congressional Location						
Quarter 3 X	Quarter 4 X	Section	Township	Township N/S Dir N	Range 64	Range E/W Dir W
Quarter 3 NE	Quarter 4 NE	Section 7	Township 6	Township N/S Dir N	Range 64	Range E/W Dir W
Rig Operator						
Rig/Unit Supervisor Dustin Carroll						
Daily Cost Summary						
Sum of Field Est (Cost) 0						
Wellbore Plug Back Total Depths						
Date	PBTD (ftKB)	Method		Com		
2/22/2024	17,471	Casing Tally		BALL SEAT SUB		
Wellbore Sections						
Section Des		Hole Size (in)	Top Depth (ftKB)		Btm Depth (ftKB)	
Conductor		26	29.0		109.0	
Surface		13 1/2	109.0		2,072.0	
Production		8 1/2	2,072.0		17,499.0	
Zone Status						
Zone Name		Status Date		Status		
Casing Strings						
Conductor, Actual, 109ftKB						
Casing Description	Run Date	OD (in)	Wt/Len (lb/ft)	Grade	Top Depth (ftKB)	Set Depth (ftKB)
Conductor	12/11/2023	16	45.00	X-56	29	109
Surface, Actual, 2062.2ftKB						
Casing Description	Run Date	OD (in)	Wt/Len (lb/ft)	Grade	Top Depth (ftKB)	Set Depth (ftKB)
Surface	2/6/2024	9 5/8	36.00	J-55	29	2062.2
Production Casing, Actual, 17489.9ftKB						
Casing Description	Run Date	OD (in)	Wt/Len (lb/ft)	Grade	Top Depth (ftKB)	Set Depth (ftKB)
Production Casing	2/22/2024	5 1/2	17.00	P-110	29	17489.9
<des>, <proposedoractual>, <DepthBtm>ftKB						
Casing Description	Run Date	OD (in)	Wt/Len (lb/ft)	Grade	Top Depth (ftKB)	Set Depth (ftKB)
Cement						
Des		Start Date		Top (ftKB)		Btm (ftKB)
Conductor Cement		12/11/2023		29.0		109.0
Surface cement job		2/6/2024		29.0		2,051.2
Production Casing Cement		2/22/2024		889.0		17,489.9
Proposed Cement						
Des		Top (ftKB)		Btm (ftKB)		
Tubing Strings						
Tubing Description	Run Date	String Make	OD (in)	Wt (lb/ft)	Grade	Len (ft) Set Depth
Other In Hole						
Run Date	Des		Make	OD (in)	Top (ftKB)	Btm (ftKB)
Proposed Other In Hole						
Des		Make		OD (in)	Top (ftKB)	Btm (ftKB)



Wellbore Schematic Input Report

Well Name: BISHOP A06-722

Original Hole [Land]



Date		Type	Depth Top (MD) (ftKB)	Btm (ftKB)
2/20/2024		Logging While Drilling (LWD)	2,059	17,486.0
Job Supply Amounts				
Supply Item Des	Job Supply Type	Unit	Job Category	Total Req
Daily Cost Breakdown by Category				
Field Est (Cost)	Description	Note		