

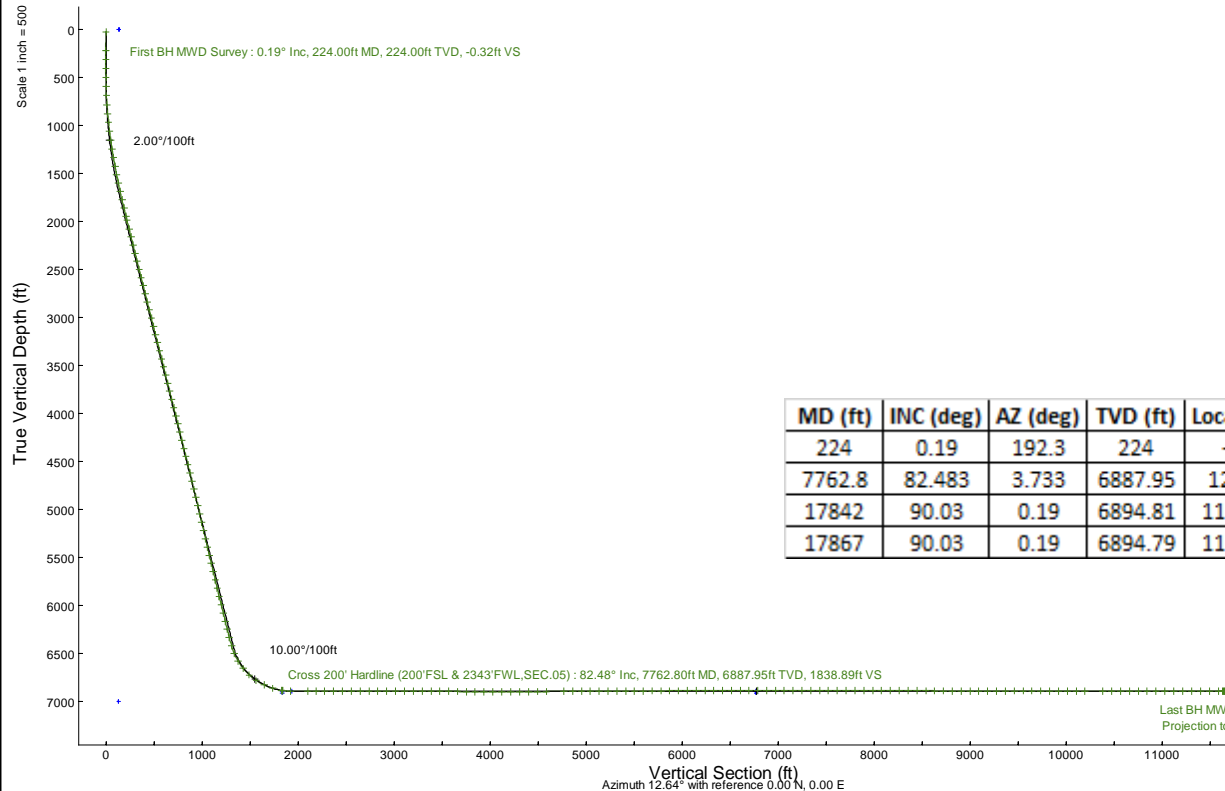
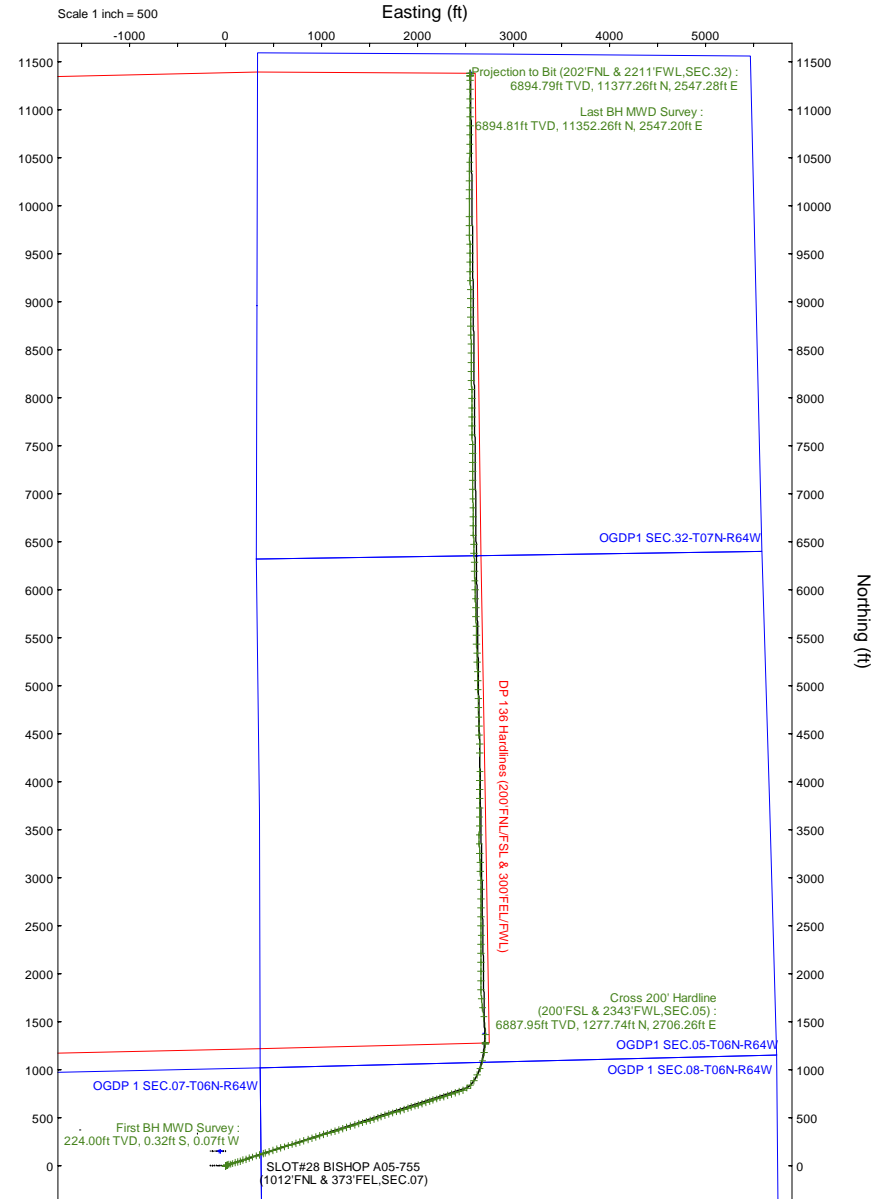
# NOBLE ENERGY, INC

Location: COLORADO Slot: SLOT#28 BISHOP A05-755 (1012'FNL & 373'FEL,SEC.07)  
 Field: WELD COUNTY (NOBLE NAD 83 GRID) Well: BISHOP A05-755  
 Facility: SEC.07-T06N-R64W Wellbore: BISHOP A05-755 PWB

Plot reference wellpath is BISHOP A05-755 (REV-D.0) PWP	Grid System: NAD83 / Lambert Colorado SP, Northern Zone (501), US feet
True vertical depths are referenced to RIG (4745'GL+29'KB@4774'RKB) (RKB)	North Reference: Grid north
Reference wellpath measured depths are referenced to RIG (4745'GL+29'KB@4774'RKB) (RKB)	Scale: True distance
RIG (4745'GL+29'KB@4774'RKB) (RKB) to Mean Sea Level: 4774 feet	Coordinates are in feet referenced to Slot
Mean Sea Level to Ground level (At Slot: SLOT#28 BISHOP A05-755 (1012'FNL & 373'FEL,SEC.07)): 0 feet	Depths are in feet
Offset wellpath MDs are referenced to each path's default MD datum	Created by: matsam01 on 2024-04-30; Database: WA_Denver

### Location Information

Facility Name	Grid East (US ft)	Grid North (US ft)	Latitude	Longitude		
SEC.07-T06N-R64W	3254380.716	1428262.611	40°30'19.3680"N	104°35'6.7200"W		
Slot	Local N (ft)	Local E (ft)	Grid East (US ft)	Grid North (US ft)	Latitude	Longitude
SLOT#28 BISHOP A05-755 (1012'FNL & 373'FEL,SEC.07)	-149.57	51.60	3254432.316	1428113.042	40°30'17.8848"N	104°35'6.0720"W
RIG (4745'GL+29'KB@4774'RKB) (RKB) to Ground level (At Slot: SLOT#28 BISHOP A05-755 (1012'FNL & 373'FEL,SEC.07))					4774ft	
Mean Sea Level to Ground level (At Slot: SLOT#28 BISHOP A05-755 (1012'FNL & 373'FEL,SEC.07))					0ft	
RIG (4745'GL+29'KB@4774'RKB) (RKB) to Mean Sea Level					4774ft	



MD (ft)	INC (deg)	AZ (deg)	TVD (ft)	Local N (ft)	Local E (ft)	Comment
224	0.19	192.3	224	-0.32	-0.07	First BH MWD Survey
7762.8	82.483	3.733	6887.95	1277.74	2706.26	Cross 200' Hardline (200'FSL & 2343'FWL,SEC.05)
17842	90.03	0.19	6894.81	11352.26	2547.2	Last BH MWD Survey
17867	90.03	0.19	6894.79	11377.26	2547.28	Projection to Bit (202'FNL & 2211'FWL,SEC.32)

Last BH MWD Survey : 90.03° Inc, 17842.00ft MD, 6894.81ft TVD, 11634.52ft VS  
 Projection to Bit (202'FNL & 2211'FWL,SEC.32) : 90.03° Inc, 17867.00ft MD, 6894.79ft TVD, 11658.93ft VS

## REFERENCE WELLPATH IDENTIFICATION

Operator	NOBLE ENERGY, INC	Well	BISHOP A05-755
Field	WELD COUNTY (NOBLE NAD 83 GRID)	API/Legal	05-123-52070
Facility	SEC.07-T06N-R64W	Wellbore	BISHOP A05-755 AWB
Slot	SLOT#28 BISHOP A05-755 (1012'FNL & 373'FEL,SEC.07)		

## REPORT SETUP INFORMATION

Projection System	NAD83 / Lambert Colorado SP, Northern Zone (501), US feet	Software System	WellArchitect® 6.0
North Reference	Grid	User	Martsam01
Scale	0.999967	Report Generated	4/25/2024 at 11:34:27 PM
Convergence at slot	0.59° East	Database	WA_Denver

## WELLPATH LOCATION

	Local coordinates		Grid coordinates		Geographic coordinates	
	North[ft]	East[ft]	Easting[US ft]	Northing[US ft]	Latitude	Longitude
Slot Location	-149.57	51.60	3254432.32	1428113.04	40.5049680°	-104.5850200°
Facility Reference Pt			3254380.72	1428262.61	40.5053800°	-104.5852000°
Field Reference Pt			3000000.00	4454105.15	48.7761986°	-105.5000000°

## WELLPATH DATUM

Calculation method	Minimum curvature	RIG (4745'GL+29'KB@4774'RKB) (RKB) to Facility Vertical Datum	4774.00ft
Horizontal Reference Pt	Slot	RIG (4745'GL+29'KB@4774'RKB) (RKB) to Mean Sea Level	4774.00ft
Vertical Reference Pt	RIG (4745'GL+29'KB@4774'RKB) (RKB)	RIG (4745'GL+29'KB@4774'RKB) (RKB) to Ground Level at Slot (SLOT#28 BISHOP A05-755 (1012'FNL & 373'FEL,SEC.07))	4774.00ft
MD Reference Pt	RIG (4745'GL+29'KB@4774'RKB) (RKB)	Section Origin	N 0.00, E 0.00 ft
Field Vertical Reference	Mean Sea Level	Section Azimuth	12.64°

REFERENCE WELLPATH IDENTIFICATION			
Operator	NOBLE ENERGY, INC	Well	BISHOP A05-755
Field	WELD COUNTY (NOBLE NAD 83 GRID)	API/Legal	05-123-52070
Facility	SEC.07-T06N-R64W	Wellbore	BISHOP A05-755 AWB
Slot	SLOT#28 BISHOP A05-755 (1012'FNL & 373'FEL,SEC.07)		

**WELLPATH DATA (190 stations)** † = interpolated, ‡ = extrapolated station

MD [ft]	Inclination [°]	Azimuth [°]	TVD [ft]	Vert Sect [ft]	North [ft]	East [ft]	Latitude	Longitude	DLS ["/100ft]	Comments
0.00†	0.000	192.300	0.00	0.00	0.00	0.00	40.5049680	-104.5850200	0.00	
29.00	0.000	192.300	29.00	0.00	0.00	0.00	40.5049680	-104.5850200	0.00	
224.00	0.190	192.300	224.00	-0.32	-0.32	-0.07	40.5049671	-104.5850203	0.10	First BH MWD Survey
314.00	0.100	43.850	314.00	-0.41	-0.41	-0.05	40.5049669	-104.5850202	0.31	
408.00	0.070	158.500	408.00	-0.38	-0.40	0.03	40.5049669	-104.5850199	0.15	
503.00	1.400	73.580	502.99	0.13	-0.13	1.17	40.5049676	-104.5850158	1.47	
598.00	3.420	71.350	597.90	2.17	1.11	4.96	40.5049709	-104.5850021	2.13	
692.00	5.630	76.770	691.60	5.64	3.06	12.11	40.5049761	-104.5849763	2.39	
787.00	7.690	74.250	785.96	10.69	5.85	22.77	40.5049834	-104.5849379	2.19	
882.00	10.280	73.190	879.78	17.88	10.03	37.00	40.5049945	-104.5848866	2.73	
976.00	12.600	73.260	971.91	27.04	15.41	54.85	40.5050087	-104.5848222	2.47	
1071.00	14.990	73.260	1064.16	38.15	21.93	76.54	40.5050260	-104.5847440	2.52	
1166.00	15.420	72.030	1155.84	50.61	29.37	100.32	40.5050458	-104.5846582	0.57	
1260.00	17.020	70.300	1246.09	64.33	37.86	125.16	40.5050684	-104.5845685	1.78	
1355.00	18.770	72.990	1336.49	79.33	47.02	152.87	40.5050927	-104.5844686	2.04	
1450.00	20.710	73.270	1425.91	95.13	56.33	183.57	40.5051174	-104.5843578	2.04	
1544.00	21.920	72.550	1513.48	112.08	66.38	216.23	40.5051441	-104.5842400	1.32	
1639.00	20.940	71.990	1601.91	129.62	76.94	249.29	40.5051721	-104.5841207	1.05	
1733.00	23.130	70.800	1689.04	147.93	88.21	282.71	40.5052021	-104.5840002	2.38	
1828.00	23.830	71.270	1776.17	167.76	100.51	318.50	40.5052348	-104.5838710	0.76	
1923.00	24.810	71.370	1862.74	188.09	113.04	355.57	40.5052682	-104.5837373	1.03	
2017.00	25.770	70.730	1947.73	209.13	126.08	393.54	40.5053029	-104.5836002	1.06	
2064.00	24.790	70.810	1990.23	219.73	132.69	412.49	40.5053205	-104.5835318	2.09	
2162.00	25.450	73.220	2078.96	240.91	145.53	452.06	40.5053546	-104.5833891	1.24	
2257.00	26.800	72.670	2164.25	261.63	157.80	492.05	40.5053872	-104.5832448	1.44	
2352.00	26.770	73.080	2249.06	282.88	170.40	532.96	40.5054206	-104.5830973	0.20	
2446.00	26.680	72.570	2333.02	303.90	182.89	573.35	40.5054537	-104.5829516	0.26	
2541.00	26.640	72.700	2417.92	325.21	195.61	614.03	40.5054875	-104.5828048	0.07	
2636.00	26.720	72.860	2502.80	346.45	208.24	654.78	40.5055210	-104.5826578	0.11	
2730.00	26.640	72.900	2586.79	367.40	220.66	695.11	40.5055539	-104.5825123	0.09	
2825.00	26.830	72.660	2671.64	388.68	233.31	735.93	40.5055875	-104.5823651	0.23	
2920.00	26.710	72.860	2756.46	409.99	246.00	776.80	40.5056211	-104.5822176	0.16	
3014.00	26.790	72.840	2840.40	431.01	258.47	817.23	40.5056542	-104.5820718	0.09	
3109.00	26.890	72.410	2925.16	452.47	271.28	858.16	40.5056882	-104.5819241	0.23	
3204.00	26.470	72.760	3010.05	473.83	284.05	898.86	40.5057221	-104.5817773	0.47	
3299.00	26.420	73.850	3095.11	494.55	296.20	939.39	40.5057543	-104.5816311	0.51	
3393.00	27.130	70.590	3179.03	516.00	309.14	979.69	40.5057887	-104.5814857	1.74	
3488.00	26.500	72.970	3263.82	537.98	322.55	1020.39	40.5058243	-104.5813389	1.31	
3583.00	26.580	72.820	3348.81	559.04	335.03	1060.96	40.5058575	-104.5811926	0.11	
3678.00	26.430	73.040	3433.82	580.05	347.48	1101.48	40.5058905	-104.5810464	0.19	
3772.00	26.230	72.900	3518.07	600.69	359.69	1141.35	40.5059228	-104.5809026	0.22	
3867.00	26.300	72.580	3603.26	621.65	372.16	1181.50	40.5059559	-104.5807577	0.17	
3962.00	26.950	72.840	3688.19	642.89	384.81	1222.15	40.5059895	-104.5806111	0.70	
4056.00	26.920	72.480	3771.99	664.16	397.50	1262.79	40.5060232	-104.5804645	0.18	
4151.00	26.900	72.690	3856.71	685.69	410.37	1303.82	40.5060573	-104.5803165	0.10	

REFERENCE WELLPATH IDENTIFICATION			
Operator	NOBLE ENERGY, INC	Well	BISHOP A05-755
Field	WELD COUNTY (NOBLE NAD 83 GRID)	API/Legal	05-123-52070
Facility	SEC.07-T06N-R64W	Wellbore	BISHOP A05-755 AWB
Slot	SLOT#28 BISHOP A05-755 (1012'FNL & 373'FEL,SEC.07)		

**WELLPATH DATA (190 stations)** † = interpolated, ‡ = extrapolated station

MD [ft]	Inclination [°]	Azimuth [°]	TVD [ft]	Vert Sect [ft]	North [ft]	East [ft]	Latitude	Longitude	DLS ["/100ft]	Comments
4246.00	26.840	72.760	3941.45	707.11	423.12	1344.82	40.5060912	-104.5801686	0.07	
4341.00	26.990	72.520	4026.16	728.61	435.95	1385.86	40.5061252	-104.5800205	0.19	
4435.00	26.620	72.750	4110.06	749.80	448.61	1426.32	40.5061588	-104.5798745	0.41	
4530.00	25.740	72.650	4195.31	770.72	461.07	1466.33	40.5061919	-104.5797302	0.93	
4625.00	26.040	72.480	4280.78	791.51	473.50	1505.91	40.5062248	-104.5795874	0.33	
4720.00	26.140	72.420	4366.10	812.51	486.10	1545.74	40.5062583	-104.5794437	0.11	
4814.00	25.410	72.350	4450.74	833.11	498.47	1584.70	40.5062911	-104.5793032	0.78	
4909.00	26.000	72.550	4536.34	853.83	510.89	1623.99	40.5063241	-104.5791614	0.63	
5004.00	25.760	72.440	4621.81	874.65	523.36	1663.54	40.5063572	-104.5790187	0.26	
5099.00	25.770	72.590	4707.37	895.37	535.77	1702.92	40.5063901	-104.5788767	0.07	
5193.00	25.900	72.470	4791.97	915.92	548.07	1742.00	40.5064228	-104.5787357	0.15	
5288.00	25.750	72.600	4877.49	936.68	560.49	1781.47	40.5064557	-104.5785933	0.17	
5383.00	24.860	72.390	4963.37	957.07	572.70	1820.20	40.5064882	-104.5784536	0.94	
5478.00	26.080	72.340	5049.14	977.66	585.08	1859.13	40.5065210	-104.5783131	1.28	
5572.00	25.170	72.360	5133.89	998.17	597.40	1897.87	40.5065537	-104.5781733	0.97	
5667.00	23.930	72.420	5220.30	1018.05	609.35	1935.49	40.5065854	-104.5780376	1.31	
5762.00	24.540	72.450	5306.93	1037.67	621.11	1972.67	40.5066167	-104.5779035	0.64	
5857.00	24.840	72.590	5393.24	1057.58	633.03	2010.52	40.5066483	-104.5777669	0.32	
5952.00	25.720	72.580	5479.14	1077.90	645.17	2049.23	40.5066805	-104.5776273	0.93	
6046.00	24.930	72.540	5564.11	1098.05	657.23	2087.59	40.5067125	-104.5774889	0.84	
6141.00	25.560	71.400	5650.04	1118.72	669.77	2126.11	40.5067458	-104.5773499	0.84	
6236.00	23.780	71.360	5736.36	1139.29	682.43	2163.69	40.5067795	-104.5772143	1.87	
6331.00	24.080	71.500	5823.20	1159.26	694.70	2200.21	40.5068122	-104.5770825	0.32	
6425.00	24.910	71.390	5908.73	1179.44	707.10	2237.16	40.5068451	-104.5769492	0.88	
6520.00	25.930	71.470	5994.54	1200.57	720.09	2275.82	40.5068797	-104.5768097	1.07	
6615.00	24.510	71.410	6080.48	1221.54	732.97	2314.19	40.5069139	-104.5766712	1.49	
6710.00	25.860	71.540	6166.45	1242.46	745.82	2352.52	40.5069481	-104.5765329	1.42	
6804.00	25.480	71.350	6251.17	1263.54	758.77	2391.12	40.5069826	-104.5763936	0.41	
6899.00	26.800	71.790	6336.45	1285.14	772.00	2430.83	40.5070177	-104.5762504	1.40	
6994.00	28.980	70.240	6420.41	1308.46	786.48	2472.84	40.5070563	-104.5760988	2.42	
7089.00	29.030	55.520	6503.60	1337.71	807.33	2513.55	40.5071123	-104.5759516	7.50	
7184.00	34.710	43.330	6584.33	1377.94	840.12	2551.18	40.5072013	-104.5758150	9.01	
7278.00	41.150	33.640	6658.50	1429.93	885.42	2586.75	40.5073246	-104.5756854	9.32	
7373.00	47.780	27.710	6726.29	1493.17	942.68	2620.47	40.5074808	-104.5755620	8.23	
7468.00	56.500	21.440	6784.58	1566.47	1010.86	2651.39	40.5076670	-104.5754483	10.55	
7563.00	65.190	14.780	6830.86	1648.93	1089.64	2676.94	40.5078825	-104.5753535	11.00	
7657.00	72.290	8.930	6864.94	1736.42	1175.29	2694.81	40.5081171	-104.5752860	9.52	
7752.00	81.530	4.440	6886.45	1828.32	1267.08	2705.50	40.5083687	-104.5752441	10.76	
7762.80†	82.483	3.733	6887.95	1838.89	1277.74	2706.26	40.5083980	-104.5752410	10.95	Cross 200' Hardline (200'FSL & 2343'FWL,SEC.05)
7765.00†	82.677	3.590	6888.23	1841.05	1279.92	2706.40	40.5084039	-104.5752404	10.95	Shallowest MD for Perf
7847.00	89.940	358.300	6893.51	1921.09	1361.66	2707.73	40.5086282	-104.5752325	10.95	
8036.00	88.920	351.220	6895.40	2100.84	1549.73	2690.48	40.5091450	-104.5752875	3.78	
8131.00	89.970	352.540	6896.32	2189.67	1643.77	2677.07	40.5094034	-104.5753322	1.78	
8226.00	90.000	355.140	6896.34	2279.59	1738.22	2666.87	40.5096630	-104.5753653	2.74	
8321.00	90.000	358.350	6896.34	2370.95	1833.05	2661.48	40.5099234	-104.5753812	3.38	

REFERENCE WELLPATH IDENTIFICATION			
Operator	NOBLE ENERGY, INC	Well	BISHOP A05-755
Field	WELD COUNTY (NOBLE NAD 83 GRID)	API/Legal	05-123-52070
Facility	SEC.07-T06N-R64W	Wellbore	BISHOP A05-755 AWB
Slot	SLOT#28 BISHOP A05-755 (1012'FNL & 373'FEL,SEC.07)		

### WELLPATH DATA (190 stations)

MD [ft]	Inclination [°]	Azimuth [°]	TVD [ft]	Vert Sect [ft]	North [ft]	East [ft]	Latitude	Longitude	DLS [°/100ft]	Comments
8415.00	89.750	0.400	6896.55	2462.44	1927.04	2660.45	40.5101814	-104.5753813	2.20	
8510.00	89.970	0.460	6896.78	2555.29	2022.04	2661.17	40.5104421	-104.5753752	0.24	
8605.00	89.940	0.310	6896.85	2648.12	2117.04	2661.81	40.5107028	-104.5753694	0.16	
8699.00	89.970	0.410	6896.93	2739.97	2211.03	2662.40	40.5109608	-104.5753637	0.11	
8794.00	90.090	0.300	6896.88	2832.80	2306.03	2662.98	40.5112215	-104.5753580	0.17	
8889.00	90.060	0.110	6896.75	2925.57	2401.03	2663.32	40.5114823	-104.5753533	0.20	
8984.00	90.120	359.350	6896.60	3018.17	2496.03	2662.88	40.5117430	-104.5753513	0.80	
9079.00	90.030	359.450	6896.48	3110.64	2591.02	2661.88	40.5120038	-104.5753513	0.14	
9173.00	90.310	359.430	6896.20	3202.16	2685.02	2660.96	40.5122618	-104.5753511	0.30	
9268.00	90.090	359.560	6895.87	3294.67	2780.02	2660.13	40.5125226	-104.5753505	0.27	
9363.00	89.940	359.260	6895.84	3387.15	2875.01	2659.15	40.5127833	-104.5753505	0.35	
9458.00	89.260	359.420	6896.51	3479.60	2970.00	2658.05	40.5130441	-104.5753509	0.74	
9552.00	90.120	358.400	6897.02	3570.91	3063.98	2656.27	40.5133021	-104.5753538	1.42	
9647.00	88.460	356.260	6898.19	3662.53	3158.86	2651.84	40.5135626	-104.5753661	2.85	
9742.00	88.180	357.220	6900.98	3753.85	3253.67	2646.44	40.5138230	-104.5753820	1.05	
9837.00	90.220	359.760	6902.30	3845.95	3348.61	2643.94	40.5140836	-104.5753874	3.43	
9931.00	90.180	0.250	6901.98	3937.67	3442.61	2643.95	40.5143416	-104.5753839	0.52	
10026.00	90.120	0.270	6901.73	4030.46	3537.61	2644.38	40.5146024	-104.5753788	0.07	
10121.00	90.280	0.430	6901.40	4123.29	3632.61	2644.96	40.5148631	-104.5753731	0.24	
10216.00	90.340	0.420	6900.88	4216.14	3727.60	2645.66	40.5151238	-104.5753670	0.06	
10311.00	90.220	0.570	6900.42	4309.01	3822.60	2646.48	40.5153845	-104.5753605	0.20	
10405.00	90.460	0.870	6899.86	4400.98	3916.59	2647.66	40.5156425	-104.5753527	0.41	
10500.00	90.250	0.660	6899.27	4493.95	4011.58	2648.93	40.5159031	-104.5753446	0.31	
10595.00	90.370	0.700	6898.76	4586.88	4106.57	2650.06	40.5161638	-104.5753370	0.13	
10784.00	90.280	358.270	6897.68	4770.91	4295.54	2648.36	40.5166826	-104.5753360	1.29	
10879.00	90.370	358.520	6897.15	4862.99	4390.51	2645.70	40.5169433	-104.5753420	0.28	
10973.00	90.250	358.400	6896.64	4954.12	4484.47	2643.17	40.5172013	-104.5753476	0.18	
11068.00	90.060	358.330	6896.38	5046.19	4579.43	2640.46	40.5174620	-104.5753538	0.21	
11163.00	90.340	358.550	6896.05	5138.29	4674.39	2637.88	40.5177227	-104.5753595	0.37	
11257.00	90.460	358.310	6895.39	5229.41	4768.36	2635.30	40.5179807	-104.5753652	0.29	
11352.00	90.490	358.630	6894.60	5321.52	4863.32	2632.77	40.5182414	-104.5753708	0.34	
11447.00	90.090	358.040	6894.12	5413.57	4958.28	2630.01	40.5185021	-104.5753772	0.75	
11542.00	90.550	358.840	6893.59	5505.66	5053.24	2627.42	40.5187628	-104.5753829	0.97	
11636.00	90.120	358.130	6893.04	5596.81	5147.21	2624.93	40.5190208	-104.5753883	0.88	
11731.00	90.120	358.260	6892.84	5688.81	5242.16	2621.94	40.5192815	-104.5753955	0.14	
11826.00	90.280	358.340	6892.51	5780.85	5337.12	2619.12	40.5195422	-104.5754021	0.19	
11921.00	90.310	358.260	6892.02	5872.89	5432.07	2616.31	40.5198029	-104.5754087	0.09	
12015.00	90.280	358.520	6891.54	5963.99	5526.03	2613.66	40.5200609	-104.5754147	0.28	
12110.00	90.310	358.780	6891.05	6056.18	5621.01	2611.43	40.5203216	-104.5754191	0.28	
12205.00	90.220	358.360	6890.61	6148.32	5715.98	2609.06	40.5205823	-104.5754241	0.45	
12300.00	90.180	358.110	6890.28	6240.34	5810.93	2606.13	40.5208430	-104.5754311	0.27	
12394.00	90.250	358.440	6889.93	6331.40	5904.89	2603.30	40.5211010	-104.5754377	0.36	
12489.00	90.180	358.390	6889.57	6423.49	5999.85	2600.67	40.5213617	-104.5754436	0.09	
12583.00	90.060	358.440	6889.37	6514.61	6093.81	2598.07	40.5216197	-104.5754494	0.14	
12678.00	89.850	358.250	6889.45	6606.66	6188.77	2595.33	40.5218804	-104.5754558	0.30	

REFERENCE WELLPATH IDENTIFICATION			
Operator	NOBLE ENERGY, INC	Well	BISHOP A05-755
Field	WELD COUNTY (NOBLE NAD 83 GRID)	API/Legal	05-123-52070
Facility	SEC.07-T06N-R64W	Wellbore	BISHOP A05-755 AWB
Slot	SLOT#28 BISHOP A05-755 (1012'FNL & 373'FEL,SEC.07)		

### WELLPATH DATA (190 stations)

MD [ft]	Inclination [°]	Azimuth [°]	TVD [ft]	Vert Sect [ft]	North [ft]	East [ft]	Latitude	Longitude	DLS [°/100ft]	Comments
12773.00	90.060	358.130	6889.52	6698.66	6283.73	2592.33	40.5221411	-104.5754630	0.25	
12868.00	90.030	358.270	6889.45	6790.66	6378.68	2589.34	40.5224018	-104.5754702	0.15	
12963.00	90.090	358.280	6889.35	6882.69	6473.64	2586.48	40.5226625	-104.5754769	0.06	
13057.00	90.150	358.350	6889.15	6973.77	6567.59	2583.72	40.5229205	-104.5754833	0.10	
13152.00	90.150	358.350	6888.90	7065.83	6662.56	2580.98	40.5231812	-104.5754896	0.00	
13246.00	90.000	359.420	6888.78	7157.13	6756.54	2579.16	40.5234392	-104.5754926	1.15	
13341.00	90.000	359.350	6888.78	7249.60	6851.53	2578.14	40.5237000	-104.5754927	0.07	
13436.00	90.060	359.400	6888.73	7342.07	6946.52	2577.10	40.5239607	-104.5754929	0.08	
13531.00	90.030	359.460	6888.66	7434.56	7041.52	2576.15	40.5242215	-104.5754927	0.07	
13625.00	90.120	359.510	6888.53	7526.09	7135.52	2575.31	40.5244795	-104.5754922	0.11	
13720.00	89.940	359.260	6888.48	7618.56	7230.51	2574.29	40.5247403	-104.5754924	0.32	
13815.00	89.940	359.210	6888.58	7710.97	7325.50	2573.02	40.5250010	-104.5754934	0.05	
13909.00	89.940	359.400	6888.68	7802.44	7419.49	2571.88	40.5252590	-104.5754939	0.20	
14004.00	90.060	359.550	6888.68	7894.94	7514.49	2571.01	40.5255198	-104.5754935	0.20	
14099.00	89.970	359.470	6888.66	7987.46	7609.49	2570.20	40.5257805	-104.5754929	0.13	
14193.00	89.750	359.260	6888.89	8078.95	7703.48	2569.16	40.5260386	-104.5754931	0.32	
14288.00	89.750	359.280	6889.30	8171.37	7798.47	2567.95	40.5262993	-104.5754939	0.02	
14383.00	89.660	359.350	6889.79	8263.81	7893.46	2566.81	40.5265601	-104.5754944	0.12	
14478.00	89.690	359.280	6890.33	8356.26	7988.46	2565.68	40.5268208	-104.5754949	0.08	
14572.00	89.660	359.210	6890.86	8447.70	8082.45	2564.44	40.5270788	-104.5754958	0.08	
14667.00	89.570	359.210	6891.50	8540.10	8177.44	2563.13	40.5273396	-104.5754970	0.09	
14762.00	89.690	359.370	6892.11	8632.53	8272.43	2561.95	40.5276003	-104.5754977	0.21	
14856.00	89.780	359.270	6892.55	8724.00	8366.42	2560.83	40.5278584	-104.5754982	0.14	
14951.00	89.570	359.000	6893.09	8816.37	8461.41	2559.40	40.5281191	-104.5754998	0.36	
15046.00	89.940	359.320	6893.49	8908.76	8556.39	2558.01	40.5283799	-104.5755012	0.51	
15141.00	90.000	359.290	6893.54	9001.20	8651.39	2556.85	40.5286406	-104.5755018	0.07	
15235.00	90.030	359.390	6893.52	9092.68	8745.38	2555.77	40.5288986	-104.5755022	0.11	
15330.00	90.180	359.350	6893.34	9185.14	8840.38	2554.73	40.5291594	-104.5755023	0.16	
15425.00	89.940	359.420	6893.24	9277.61	8935.37	2553.71	40.5294201	-104.5755025	0.26	
15519.00	90.150	359.240	6893.17	9369.09	9029.36	2552.61	40.5296782	-104.5755029	0.29	
15614.00	90.150	359.270	6892.92	9461.51	9124.35	2551.37	40.5299389	-104.5755038	0.03	
15709.00	89.820	358.930	6892.95	9553.87	9219.34	2549.88	40.5301997	-104.5755056	0.50	
15804.00	90.180	359.300	6892.95	9646.23	9314.33	2548.41	40.5304604	-104.5755073	0.54	
15899.00	89.820	359.240	6892.95	9738.66	9409.32	2547.20	40.5307212	-104.5755081	0.38	
15993.00	90.030	359.150	6893.07	9830.08	9503.31	2545.88	40.5309792	-104.5755093	0.24	
16088.00	89.910	359.210	6893.12	9922.47	9598.30	2544.52	40.5312400	-104.5755106	0.14	
16183.00	89.850	359.130	6893.32	10014.86	9693.29	2543.15	40.5315007	-104.5755120	0.11	
16278.00	90.030	359.180	6893.42	10107.24	9788.28	2541.75	40.5317615	-104.5755135	0.20	
16372.00	89.780	0.070	6893.57	10198.83	9882.28	2541.13	40.5320195	-104.5755122	0.98	
16561.00	89.940	0.340	6894.04	10383.39	10071.28	2541.81	40.5325382	-104.5755027	0.17	
16656.00	89.940	0.270	6894.14	10476.20	10166.28	2542.31	40.5327989	-104.5754973	0.07	
16751.00	89.940	0.340	6894.24	10569.01	10261.28	2542.82	40.5330596	-104.5754919	0.07	
16846.00	89.970	0.330	6894.31	10661.83	10356.27	2543.37	40.5333204	-104.5754863	0.03	
16940.00	90.120	0.240	6894.24	10753.65	10450.27	2543.84	40.5335784	-104.5754811	0.19	
17035.00	90.120	0.280	6894.04	10846.44	10545.27	2544.27	40.5338391	-104.5754760	0.04	

REFERENCE WELLPATH IDENTIFICATION			
Operator	NOBLE ENERGY, INC	Well	BISHOP A05-755
Field	WELD COUNTY (NOBLE NAD 83 GRID)	API/Legal	05-123-52070
Facility	SEC.07-T06N-R64W	Wellbore	BISHOP A05-755 AWB
Slot	SLOT#28 BISHOP A05-755 (1012'FNL & 373'FEL,SEC.07)		

WELLPATH DATA (190 stations) † = interpolated, ‡ = extrapolated station										
MD [ft]	Inclination [°]	Azimuth [°]	TVD [ft]	Vert Sect [ft]	North [ft]	East [ft]	Latitude	Longitude	DLS [°/100ft]	Comments
17130.00	90.030	0.130	6893.91	10939.21	10640.27	2544.61	40.5340998	-104.5754712	0.18	
17225.00	89.910	0.300	6893.96	11031.99	10735.27	2544.97	40.5343605	-104.5754664	0.22	
17319.00	89.970	0.200	6894.06	11123.80	10829.27	2545.38	40.5346185	-104.5754614	0.12	
17414.00	89.880	0.210	6894.19	11216.57	10924.27	2545.72	40.5348793	-104.5754566	0.10	
17509.00	90.030	0.390	6894.26	11309.38	11019.27	2546.22	40.5351400	-104.5754512	0.25	
17604.00	89.910	0.150	6894.31	11402.17	11114.27	2546.66	40.5354007	-104.5754461	0.28	
17699.00	89.850	0.130	6894.51	11494.92	11209.27	2546.90	40.5356615	-104.5754417	0.07	
17793.00	89.850	0.090	6894.75	11586.68	11303.26	2547.08	40.5359195	-104.5754375	0.04	
17842.00	90.030	0.190	6894.81	11634.52	11352.26	2547.20	40.5360539	-104.5754352	0.42	Last BH MWD Survey
17867.00‡	90.030	0.190	6894.79	11658.93	11377.26	2547.28	40.5361226	-104.5754340	0.00	Projection to Bit (202'FNL & 2211'FWL,SEC.32)

REFERENCE WELLPATH IDENTIFICATION			
Operator	NOBLE ENERGY, INC	Well	BISHOP A05-755
Field	WELD COUNTY (NOBLE NAD 83 GRID)	API/Legal	05-123-52070
Facility	SEC.07-T06N-R64W	Wellbore	BISHOP A05-755 AWB
Slot	SLOT#28 BISHOP A05-755 (1012'FNL & 373'FEL,SEC.07)		

TARGETS								
Name	TVD [ft]	North [ft]	East [ft]	Grid East [US ft]	Grid North [US ft]	Latitude	Longitude	Shape
OGDP 1 SEC.07-T06N-R64W	2.00	149.57	-51.60	3254380.72	1428262.61	40.5053800	-104.5852000	polygon
	2D Polygon: dimensions not calculated							
OGDP 1 SEC.08-T06N-R64W	2.00	149.57	-51.60	3254380.72	1428262.61	40.5053800	-104.5852000	polygon
	2D Polygon: dimensions not calculated							
OGDP1 SEC.05-T06N-R64W	20.00	168.01	-4303.96	3250128.51	1428281.04	40.5055500	-104.6004900	polygon
	2D Polygon: dimensions not calculated							
OGDP1 SEC.32-T07N-R64W	20.00	168.01	-4303.96	3250128.51	1428281.04	40.5055500	-104.6004900	polygon
	2D Polygon: dimensions not calculated							
BISHOP A05-755 BHL Rev-2 (200'FSL & 2215'FWL,SEC.32)	6896.00	11379.29	2551.50	<b>3256983.73</b>	<b>1439491.93</b>	40.5361280	-104.5754187	point
BISHOP A05-755 IP Rev-2	6896.00	6354.11	2612.40	3257044.62	1434466.93	40.5223337	-104.5753882	point
BISHOP A05-755 LP Rev-2 (200'FSL & 2335'FWL,SEC.05)	6896.00	1277.74	2698.25	<b>3257130.47</b>	<b>1429390.73</b>	40.5083982	-104.5752698	point
BISHOP A05-755 LP Rev-3 for AC (300'FSL & 2335'FWL,SEC.05)	6896.00	1377.74	2698.25	3257130.47	1429490.73	40.5086726	-104.5752660	point
BISHOP A05-755 BHL Rev-1 (200'FSL & 2215'FWL,SEC.32)	6914.00	11379.29	2551.50	<b>3256983.73</b>	<b>1439491.93</b>	40.5361280	-104.5754187	point
BISHOP A05-755 IP 1	6914.00	6354.11	2612.40	3257044.62	1434466.93	40.5223337	-104.5753882	point
BISHOP A05-755 LP Rev-1 (200'FSL & 2335'FWL,SEC.05)	6914.00	1277.74	2698.25	<b>3257130.47</b>	<b>1429390.73</b>	40.5083982	-104.5752698	point
DP 136 Hardlines (200'FNL/FSL & 300'FEL/FWL)	7003.00	149.77	-67.73	3254364.58	1428262.81	40.5053810	-104.5852580	polygon
	2D Polygon: dimensions not calculated							

REFERENCE WELLPATH IDENTIFICATION			
Operator	NOBLE ENERGY, INC	Well	BISHOP A05-755
Field	WELD COUNTY (NOBLE NAD 83 GRID)	API/Legal	05-123-52070
Facility	SEC.07-T06N-R64W	Wellbore	BISHOP A05-755 AWB
Slot	SLOT#28 BISHOP A05-755 (1012'FNL & 373'FEL,SEC.07)		

WELLPATH COMPOSITION - Ref Wellbore: BISHOP A05-755 AWB Ref Wellpath: BISHOP A05-755 AWP					
Start MD [ft]	End MD [ft]	Positional Uncertainty Model	Log Name/Comment	Wellbore	Survey Date
29.00	2064.00	OWSG MWD rev2 (MS+IFR1)	13.5" NaviTrak Surface OWSG MWD rev2 (MS + IFR1) <224'-2064'>	BISHOP A05-755 AWB	2/13/2024
2064.00	17867.00	OWSG MWD rev2 (MS+IFR1)	8.5" Lucida OWSG MWD rev2 <2162'-17842'>	BISHOP A05-755 AWB	3/14/2024

REFERENCE WELLPATH IDENTIFICATION			
Operator	NOBLE ENERGY, INC	Well	BISHOP A05-755
Field	WELD COUNTY (NOBLE NAD 83 GRID)	API/Legal	05-123-52070
Facility	SEC.07-T06N-R64W	Wellbore	BISHOP A05-755 AWB
Slot	SLOT#28 BISHOP A05-755 (1012'FNL & 373'FEL,SEC.07)		

WELLPATH COMMENTS				
MD [ft]	Inclination [°]	Azimuth [°]	TVD [ft]	Comment
224.00	0.190	192.300	224.00	First BH MWD Survey
7762.80	82.483	3.733	6887.95	Cross 200' Hardline (200'FSL & 2343'FWL,SEC.05)
7765.00	82.677	3.590	6888.23	Shallowest MD for Perf
17842.00	90.030	0.190	6894.81	Last BH MWD Survey
17867.00	90.030	0.190	6894.79	Projection to Bit (202'FNL & 2211'FWL,SEC.32)