

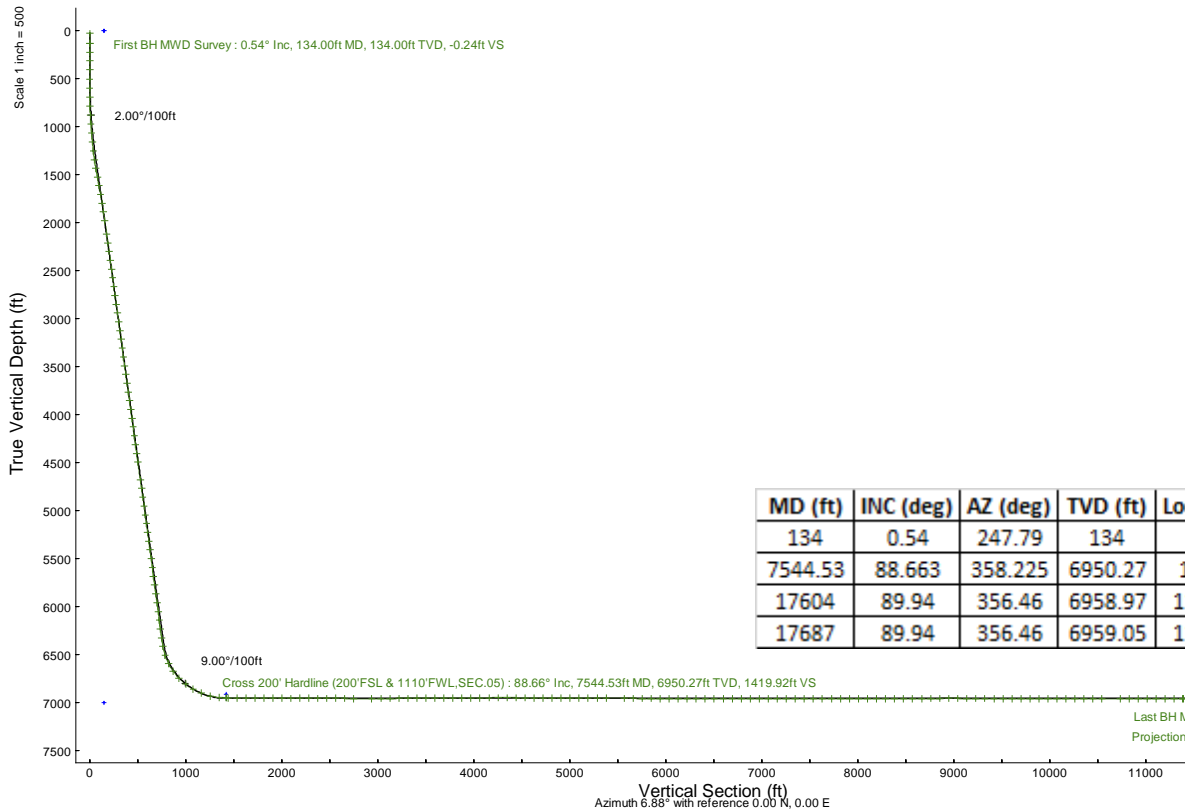
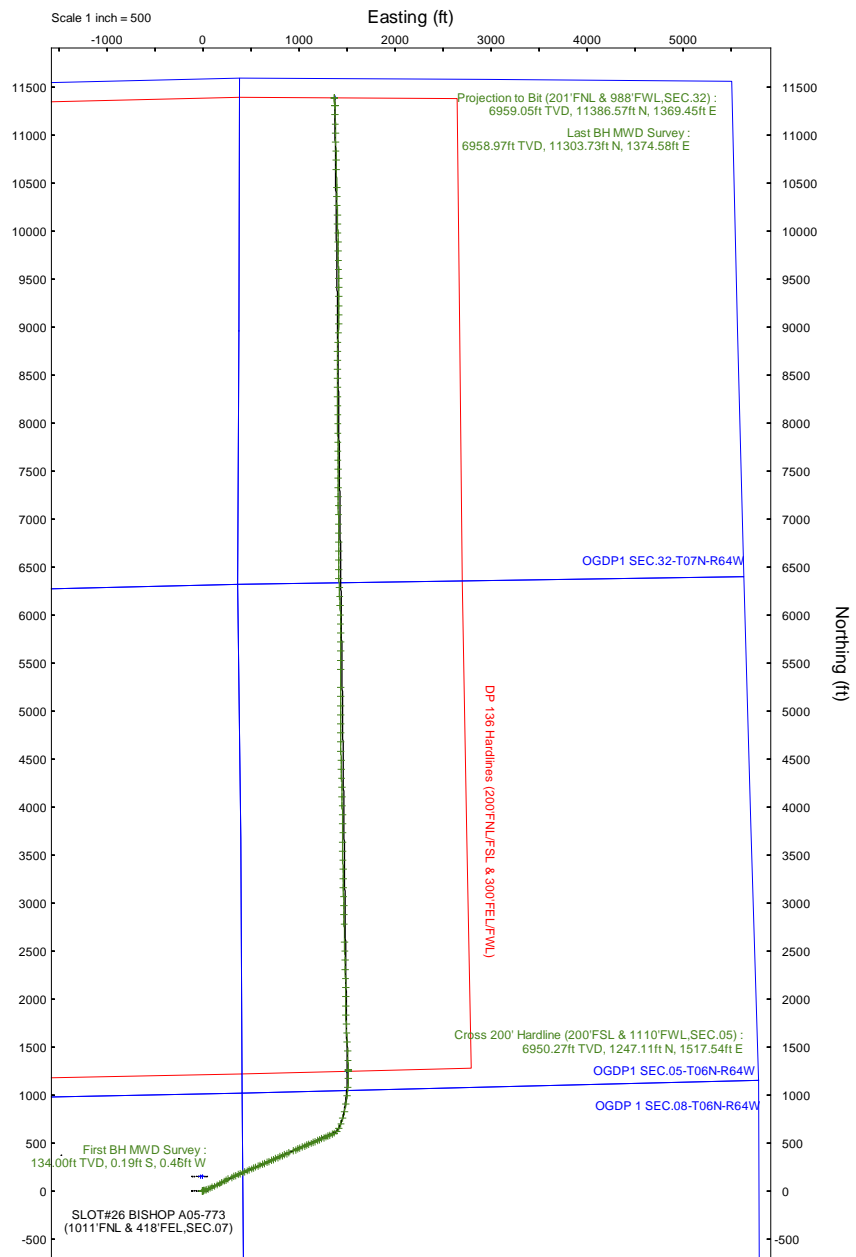
NOBLE ENERGY, INC

Location: COLORADO Slot: SLOT#26 BISHOP A05-773 (1011'FNL & 418'FEL,SEC.07)
 Field: WELD COUNTY (NOBLE NAD 83 GRID) Well: BISHOP A05-773
 Facility: SEC.07-T06N-R64W Wellbore: BISHOP A05-773 PWB

Plot reference wellpath is BISHOP A05-773 (REV-D.0) PWP	Grid System: NAD83 / Lambert Colorado SP, Northern Zone (501), US feet
True vertical depths are referenced to RIG (4744'GL+29'KB@4773'RKB) (RKB)	North Reference: Grid north
Reference wellpath measured depths are referenced to RIG (4744'GL+29'KB@4773'RKB) (RKB)	Scale: True distance
RIG (4744'GL+29'KB@4773'RKB) (RKB) to Mean Sea Level: 4773 feet	Coordinates are in feet referenced to Slot
Mean Sea Level to Ground level (At Slot: SLOT#26 BISHOP A05-773 (1011'FNL & 418'FEL,SEC.07)): 0 feet	Depths are in feet
Offset wellpath MDs are referenced to each path's default MD datum	Created by: matsam01 on 2024-04-30; Database: WA_Denver

Location Information

Facility Name		Grid East (US ft)	Grid North (US ft)	Latitude	Longitude	
SEC.07-T06N-R64W		3254380.716	1428262.611	40°30'19.3680"N	104°35'6.7200"W	
Slot	Local N (ft)	Local E (ft)	Grid East (US ft)	Grid North (US ft)	Latitude	Longitude
SLOT#26 BISHOP A05-773 (1011'FNL & 418'FEL,SEC.07)	-149.68	6.55	3254387.266	1428112.941	40°30'17.8884"N	104°35'6.6552"W
RIG (4744'GL+29'KB@4773'RKB) (RKB) to Ground level (At Slot: SLOT#26 BISHOP A05-773 (1011'FNL & 418'FEL,SEC.07))						4773ft
Mean Sea Level to Ground level (At Slot: SLOT#26 BISHOP A05-773 (1011'FNL & 418'FEL,SEC.07))						0ft
RIG (4744'GL+29'KB@4773'RKB) (RKB) to Mean Sea Level						4773ft



MD (ft)	INC (deg)	AZ (deg)	TVD (ft)	Local N (ft)	Local E (ft)	Comment
134	0.54	247.79	134	-0.19	-0.46	First BH MWD Survey
7544.53	88.663	358.225	6950.27	1247.11	1517.54	Cross 200' Hardline (200'FSL & 1110'FWL,SEC.05)
17604	89.94	356.46	6958.97	11303.73	1374.58	Last BH MWD Survey
17687	89.94	356.46	6959.05	11386.57	1369.45	Projection to Bit (201'FNL & 988'FWL,SEC.32)



Actual Wellpath Report

BISHOP A05-773 AWP

Page 1 of 8



REFERENCE WELLPATH IDENTIFICATION

Operator	NOBLE ENERGY, INC	Well	BISHOP A05-773
Field	WELD COUNTY (NOBLE NAD 83 GRID)	API/Legal	05-123-52068
Facility	SEC.07-T06N-R64W	Wellbore	BISHOP A05-773 AWB
Slot	SLOT#26 BISHOP A05-773 (1011'FNL & 418'FEL,SEC.07)		

REPORT SETUP INFORMATION

Projection System	NAD83 / Lambert Colorado SP, Northern Zone (501), US feet	Software System	WellArchitect® 6.0
North Reference	Grid	User	Martsam01
Scale	0.999967	Report Generated	4/25/2024 at 11:31:51 PM
Convergence at slot	0.59° East	Database	WA_Denver

WELLPATH LOCATION

	Local coordinates		Grid coordinates		Geographic coordinates	
	North[ft]	East[ft]	Easting[US ft]	Northing[US ft]	Latitude	Longitude
Slot Location	-149.68	6.55	3254387.27	1428112.94	40.5049690°	-104.5851820°
Facility Reference Pt			3254380.72	1428262.61	40.5053800°	-104.5852000°
Field Reference Pt			3000000.00	4454105.15	48.7761986°	-105.5000000°

WELLPATH DATUM

Calculation method	Minimum curvature	RIG (4744'GL+29'KB@4773'RKB) (RKB) to Facility Vertical Datum	4773.00ft
Horizontal Reference Pt	Slot	RIG (4744'GL+29'KB@4773'RKB) (RKB) to Mean Sea Level	4773.00ft
Vertical Reference Pt	RIG (4744'GL+29'KB@4773'RKB) (RKB)	RIG (4744'GL+29'KB@4773'RKB) (RKB) to Ground Level at Slot (SLOT#26 BISHOP A05-773 (1011'FNL & 418'FEL,SEC.07))	4773.00ft
MD Reference Pt	RIG (4744'GL+29'KB@4773'RKB) (RKB)	Section Origin	N 0.00, E 0.00 ft
Field Vertical Reference	Mean Sea Level	Section Azimuth	6.88°

REFERENCE WELLPATH IDENTIFICATION			
Operator	NOBLE ENERGY, INC	Well	BISHOP A05-773
Field	WELD COUNTY (NOBLE NAD 83 GRID)	API/Legal	05-123-52068
Facility	SEC.07-T06N-R64W	Wellbore	BISHOP A05-773 AWB
Slot	SLOT#26 BISHOP A05-773 (1011'FNL & 418'FEL,SEC.07)		

WELLPATH DATA (186 stations) † = interpolated, ‡ = extrapolated station

MD [ft]	Inclination [°]	Azimuth [°]	TVD [ft]	Vert Sect [ft]	North [ft]	East [ft]	Latitude	Longitude	DLS [°/100ft]	Comments
0.00†	0.000	247.790	0.00	0.00	0.00	0.00	40.5049690	-104.5851820	0.00	
29.00	0.000	247.790	29.00	0.00	0.00	0.00	40.5049690	-104.5851820	0.00	
134.00	0.540	247.790	134.00	-0.24	-0.19	-0.46	40.5049685	-104.5851837	0.51	First BH MWD Survey
224.00	0.390	255.290	224.00	-0.56	-0.43	-1.15	40.5049679	-104.5851861	0.18	
314.00	0.430	220.900	313.99	-0.95	-0.76	-1.66	40.5049670	-104.5851880	0.27	
408.00	0.690	242.750	407.99	-1.56	-1.28	-2.40	40.5049655	-104.5851907	0.35	
503.00	0.650	210.460	502.98	-2.38	-2.01	-3.18	40.5049636	-104.5851935	0.39	
598.00	0.520	59.450	597.98	-2.61	-2.26	-3.08	40.5049629	-104.5851932	1.19	
692.00	1.880	70.330	691.96	-1.66	-1.52	-1.26	40.5049649	-104.5851866	1.46	
787.00	3.810	59.200	786.84	0.97	0.62	2.92	40.5049706	-104.5851715	2.10	
882.00	5.770	65.380	881.50	5.39	4.23	9.97	40.5049803	-104.5851460	2.13	
976.00	8.620	72.340	974.75	10.79	8.33	20.98	40.5049913	-104.5851063	3.17	
1071.00	10.160	70.170	1068.48	17.51	13.34	35.65	40.5050046	-104.5850533	1.66	
1166.00	12.670	68.030	1161.59	26.30	20.08	53.19	40.5050226	-104.5849900	2.68	
1260.00	14.960	70.300	1252.87	36.71	28.02	74.18	40.5050438	-104.5849142	2.50	
1355.00	16.240	68.010	1344.37	48.61	37.13	98.04	40.5050681	-104.5848281	1.49	
1450.00	16.650	63.010	1435.48	62.61	48.28	122.49	40.5050981	-104.5847398	1.55	
1544.00	18.040	62.310	1525.21	78.37	61.16	147.38	40.5051327	-104.5846498	1.50	
1639.00	17.750	62.570	1615.61	94.88	74.67	173.26	40.5051690	-104.5845562	0.32	
1733.00	17.110	60.820	1705.30	111.10	88.01	198.05	40.5052049	-104.5844666	0.88	
1828.00	15.700	59.760	1796.43	127.08	101.30	221.35	40.5052408	-104.5843823	1.52	
1923.00	15.410	64.550	1887.95	141.59	113.19	243.86	40.5052728	-104.5843009	1.39	
2017.00	14.890	65.020	1978.68	154.65	123.66	266.08	40.5053009	-104.5842206	0.57	
2163.00	15.260	66.010	2119.66	174.41	139.40	300.64	40.5053431	-104.5840958	0.31	
2258.00	15.290	66.250	2211.30	187.20	149.52	323.53	40.5053702	-104.5840131	0.07	
2352.00	15.110	66.660	2302.01	199.68	159.37	346.12	40.5053966	-104.5839315	0.22	
2447.00	15.290	66.880	2393.69	212.18	169.19	369.01	40.5054229	-104.5838488	0.20	
2542.00	15.250	66.990	2485.34	224.67	178.99	392.03	40.5054492	-104.5837657	0.05	
2636.00	15.330	66.100	2576.01	237.19	188.86	414.77	40.5054756	-104.5836836	0.26	
2731.00	15.150	67.370	2667.67	249.73	198.73	437.71	40.5055020	-104.5836007	0.40	
2826.00	15.210	66.770	2759.35	262.09	208.42	460.62	40.5055280	-104.5835180	0.18	
2920.00	15.390	66.140	2850.02	274.66	218.33	483.36	40.5055545	-104.5834358	0.26	
3015.00	15.590	66.960	2941.57	287.47	228.42	506.63	40.5055816	-104.5833518	0.31	
3110.00	15.230	66.130	3033.16	300.21	238.47	529.79	40.5056085	-104.5832681	0.44	
3204.00	15.700	68.680	3123.75	312.54	248.09	552.93	40.5056343	-104.5831846	0.88	
3299.00	15.220	66.950	3215.32	324.83	257.64	576.38	40.5056598	-104.5830999	0.70	
3394.00	15.190	66.610	3306.99	337.33	267.47	599.27	40.5056861	-104.5830172	0.10	
3489.00	15.130	66.420	3398.69	349.89	277.37	622.06	40.5057127	-104.5829349	0.08	
3583.00	15.210	66.630	3489.41	362.32	287.17	644.62	40.5057389	-104.5828534	0.10	
3678.00	15.080	66.620	3581.11	374.82	297.01	667.41	40.5057653	-104.5827711	0.14	
3773.00	15.250	66.710	3672.80	387.33	306.86	690.23	40.5057917	-104.5826887	0.18	
3868.00	15.520	66.780	3764.40	399.98	316.81	713.38	40.5058183	-104.5826051	0.28	
3962.00	15.510	66.100	3854.97	412.72	326.86	736.43	40.5058452	-104.5825218	0.19	
4057.00	15.410	66.470	3946.53	425.61	337.04	759.61	40.5058725	-104.5824381	0.15	
4152.00	15.390	66.650	4038.12	438.35	347.08	782.76	40.5058994	-104.5823545	0.05	

REFERENCE WELLPATH IDENTIFICATION			
Operator	NOBLE ENERGY, INC	Well	BISHOP A05-773
Field	WELD COUNTY (NOBLE NAD 83 GRID)	API/Legal	05-123-52068
Facility	SEC.07-T06N-R64W	Wellbore	BISHOP A05-773 AWB
Slot	SLOT#26 BISHOP A05-773 (1011'FNL & 418'FEL,SEC.07)		

WELLPATH DATA (186 stations) † = interpolated, ‡ = extrapolated station

MD [ft]	Inclination [°]	Azimuth [°]	TVD [ft]	Vert Sect [ft]	North [ft]	East [ft]	Latitude	Longitude	DLS ["/100ft]	Comments
4246.00	15.100	66.800	4128.82	450.76	356.85	805.47	40.5059256	-104.5822724	0.31	
4341.00	15.150	67.090	4220.53	463.13	366.55	828.27	40.5059516	-104.5821901	0.10	
4436.00	15.280	66.630	4312.20	475.61	376.35	851.20	40.5059778	-104.5821073	0.19	
4531.00	15.120	67.130	4403.87	488.06	386.13	874.11	40.5060040	-104.5820245	0.22	
4625.00	15.240	66.540	4494.59	500.39	395.82	896.74	40.5060300	-104.5819428	0.21	
4815.00	15.580	66.660	4677.76	525.84	415.87	943.07	40.5060837	-104.5817754	0.18	
4910.00	15.560	66.930	4769.27	538.63	425.91	966.51	40.5061106	-104.5816908	0.08	
5004.00	15.540	66.460	4859.83	551.30	435.88	989.65	40.5061373	-104.5816072	0.14	
5099.00	15.590	66.700	4951.35	564.16	446.01	1013.04	40.5061644	-104.5815227	0.09	
5194.00	15.850	67.040	5042.80	577.03	456.12	1036.71	40.5061915	-104.5814372	0.29	
5289.00	15.430	66.970	5134.28	589.79	466.13	1060.29	40.5062183	-104.5813521	0.44	
5383.00	15.120	66.650	5224.96	602.19	475.88	1083.05	40.5062444	-104.5812699	0.34	
5478.00	14.380	66.530	5316.83	614.39	485.49	1105.25	40.5062702	-104.5811897	0.78	
5573.00	15.060	67.120	5408.71	626.48	494.99	1127.44	40.5062956	-104.5811095	0.73	
5668.00	14.760	67.220	5500.51	638.59	504.47	1149.97	40.5063210	-104.5810282	0.32	
5762.00	14.390	66.530	5591.48	650.42	513.76	1171.72	40.5063459	-104.5809496	0.43	
5857.00	15.510	67.090	5683.27	662.70	523.41	1194.25	40.5063717	-104.5808682	1.19	
5952.00	14.140	66.430	5775.10	674.89	532.99	1216.59	40.5063974	-104.5807875	1.45	
6047.00	15.570	66.480	5866.93	687.22	542.72	1238.92	40.5064234	-104.5807069	1.51	
6142.00	14.640	66.270	5958.64	699.79	552.64	1261.60	40.5064500	-104.5806250	0.98	
6236.00	13.940	66.460	6049.73	711.57	561.94	1282.85	40.5064749	-104.5805482	0.75	
6331.00	13.890	66.720	6141.95	723.09	571.02	1303.82	40.5064993	-104.5804725	0.08	
6426.00	13.790	66.310	6234.19	734.58	580.07	1324.66	40.5065235	-104.5803972	0.15	
6521.00	16.280	66.310	6325.93	747.11	589.97	1347.23	40.5065501	-104.5803157	2.62	
6615.00	16.990	64.450	6415.99	761.18	601.19	1371.68	40.5065801	-104.5802273	0.94	
6710.00	22.340	41.320	6505.55	783.56	620.78	1396.18	40.5066332	-104.5801385	9.84	
6805.00	27.980	27.520	6591.58	819.37	654.16	1418.44	40.5067242	-104.5800572	8.53	
6900.00	36.640	21.080	6671.82	867.81	700.48	1438.97	40.5068507	-104.5799816	9.80	
6995.00	43.510	16.520	6744.49	927.62	758.36	1458.50	40.5070091	-104.5799093	7.86	
7090.00	52.820	12.260	6807.80	997.71	826.87	1475.87	40.5071966	-104.5798442	10.35	
7184.00	60.870	8.900	6859.17	1076.16	904.16	1490.20	40.5074083	-104.5797898	9.07	
7279.00	67.110	7.200	6900.82	1161.48	988.66	1502.12	40.5076399	-104.5797438	6.76	
7374.00	76.510	5.310	6930.44	1251.62	1078.27	1511.90	40.5078856	-104.5797053	10.07	
7468.00	84.660	1.740	6945.81	1344.10	1170.74	1517.56	40.5081392	-104.5796815	9.44	
7544.53†	88.663	358.225	6950.27	1419.92	1247.11	1517.54	40.5083488	-104.5796787	6.95	Cross 200' Hardline (200'FSL & 1110'FWL,SEC.05)
7547.00†	88.792	358.112	6950.32	1422.36	1249.58	1517.46	40.5083556	-104.5796789	6.95	Shallowest MD for Perf
7563.00	89.630	357.380	6950.54	1438.15	1265.56	1516.83	40.5083995	-104.5796806	6.95	
7658.00	89.750	357.540	6951.06	1531.87	1360.47	1512.62	40.5086601	-104.5796922	0.21	
7753.00	89.540	357.430	6951.64	1625.60	1455.38	1508.45	40.5089207	-104.5797036	0.25	
7847.00	89.410	357.030	6952.51	1718.26	1549.26	1503.91	40.5091785	-104.5797165	0.45	
7942.00	89.480	357.410	6953.43	1811.91	1644.15	1499.30	40.5094391	-104.5797295	0.41	
8037.00	89.510	356.310	6954.26	1905.46	1739.00	1494.10	40.5096996	-104.5797447	1.16	
8132.00	89.570	359.750	6955.03	1999.31	1833.92	1490.83	40.5099602	-104.5797529	3.62	
8226.00	90.150	359.960	6955.26	2092.60	1927.92	1490.59	40.5102182	-104.5797502	0.66	
8321.00	90.060	359.880	6955.08	2186.90	2022.92	1490.46	40.5104790	-104.5797471	0.13	

REFERENCE WELLPATH IDENTIFICATION			
Operator	NOBLE ENERGY, INC	Well	BISHOP A05-773
Field	WELD COUNTY (NOBLE NAD 83 GRID)	API/Legal	05-123-52068
Facility	SEC.07-T06N-R64W	Wellbore	BISHOP A05-773 AWB
Slot	SLOT#26 BISHOP A05-773 (1011'FNL & 418'FEL,SEC.07)		

WELLPATH DATA (186 stations)

MD [ft]	Inclination [°]	Azimuth [°]	TVD [ft]	Vert Sect [ft]	North [ft]	East [ft]	Latitude	Longitude	DLS [°/100ft]	Comments
8416.00	89.910	359.680	6955.11	2281.17	2117.92	1490.10	40.5107397	-104.5797449	0.26	
8511.00	89.630	356.620	6955.49	2375.06	2212.86	1487.03	40.5110004	-104.5797524	3.23	
8605.00	90.430	359.020	6955.44	2467.88	2306.79	1483.45	40.5112583	-104.5797617	2.69	
8700.00	90.060	359.500	6955.03	2562.04	2401.78	1482.23	40.5115191	-104.5797626	0.64	
8795.00	88.890	357.490	6955.90	2656.01	2496.73	1479.73	40.5117798	-104.5797680	2.45	
8889.00	89.720	358.750	6957.04	2748.91	2590.67	1476.65	40.5120377	-104.5797756	1.61	
9079.00	90.280	358.730	6957.04	2936.99	2780.63	1472.47	40.5125592	-104.5797836	0.29	
9174.00	90.310	358.800	6956.55	3031.04	2875.60	1470.42	40.5128199	-104.5797874	0.08	
9269.00	90.120	358.800	6956.20	3125.10	2970.58	1468.43	40.5130806	-104.5797910	0.20	
9363.00	90.090	358.860	6956.03	3218.17	3064.56	1466.51	40.5133386	-104.5797944	0.07	
9458.00	90.680	358.790	6955.39	3312.23	3159.54	1464.57	40.5135994	-104.5797978	0.63	
9553.00	90.220	358.830	6954.64	3406.29	3254.51	1462.59	40.5138601	-104.5798014	0.49	
9648.00	90.000	358.980	6954.46	3500.37	3349.50	1460.78	40.5141209	-104.5798044	0.28	
9742.00	90.060	358.960	6954.41	3593.47	3443.48	1459.09	40.5143789	-104.5798069	0.07	
9837.00	89.690	358.120	6954.62	3687.47	3538.45	1456.67	40.5146396	-104.5798121	0.97	
9932.00	91.420	2.940	6953.70	3781.85	3633.41	1457.55	40.5149002	-104.5798054	5.39	
10027.00	90.120	358.660	6952.42	3876.28	3728.37	1458.87	40.5151608	-104.5797971	4.71	
10122.00	89.880	358.230	6952.42	3970.25	3823.33	1456.29	40.5154215	-104.5798028	0.52	
10216.00	91.720	359.060	6951.11	4063.27	3917.29	1454.07	40.5156795	-104.5798073	2.15	
10311.00	90.220	359.080	6949.50	4157.37	4012.26	1452.53	40.5159402	-104.5798093	1.58	
10406.00	90.060	358.600	6949.27	4251.44	4107.24	1450.61	40.5162009	-104.5798127	0.53	
10501.00	90.090	358.550	6949.14	4345.44	4202.21	1448.24	40.5164617	-104.5798176	0.06	
10595.00	89.570	358.450	6949.42	4438.44	4296.18	1445.78	40.5167197	-104.5798230	0.56	
10690.00	89.540	358.640	6950.16	4532.43	4391.15	1443.37	40.5169804	-104.5798281	0.20	
10785.00	89.720	358.590	6950.77	4626.44	4486.12	1441.07	40.5172411	-104.5798328	0.20	
10879.00	89.570	358.620	6951.35	4719.46	4580.09	1438.79	40.5174991	-104.5798375	0.16	
10974.00	89.630	359.920	6952.02	4813.62	4675.08	1437.58	40.5177598	-104.5798384	1.37	
11069.00	89.750	359.730	6952.53	4907.90	4770.07	1437.29	40.5180206	-104.5798358	0.24	
11163.00	89.540	359.670	6953.11	5001.16	4864.07	1436.79	40.5182786	-104.5798341	0.23	
11258.00	89.940	0.180	6953.55	5095.46	4959.07	1436.67	40.5185393	-104.5798310	0.68	
11353.00	89.970	359.860	6953.62	5189.78	5054.07	1436.70	40.5188001	-104.5798273	0.34	
11448.00	89.820	359.990	6953.79	5284.08	5149.07	1436.58	40.5190608	-104.5798243	0.21	
11542.00	89.570	359.610	6954.29	5377.36	5243.07	1436.25	40.5193188	-104.5798219	0.48	
11732.00	89.750	359.860	6955.42	5565.88	5433.06	1435.37	40.5198403	-104.5798180	0.16	
11826.00	89.690	359.750	6955.88	5659.17	5527.06	1435.05	40.5200983	-104.5798156	0.13	
11921.00	89.570	359.770	6956.49	5753.43	5622.06	1434.65	40.5203591	-104.5798135	0.13	
12016.00	89.940	359.810	6956.90	5847.70	5717.06	1434.30	40.5206198	-104.5798112	0.39	
12111.00	89.750	359.930	6957.16	5941.99	5812.05	1434.09	40.5208806	-104.5798085	0.24	
12205.00	89.850	359.760	6957.49	6035.29	5906.05	1433.83	40.5211386	-104.5798059	0.21	
12300.00	90.180	359.870	6957.46	6129.56	6001.05	1433.53	40.5213994	-104.5798034	0.37	
12395.00	89.880	356.710	6957.41	6223.49	6096.00	1430.69	40.5216600	-104.5798101	3.34	
12489.00	89.600	357.630	6957.84	6316.14	6189.88	1426.05	40.5219178	-104.5798233	1.02	
12584.00	89.660	357.600	6958.45	6409.90	6284.80	1422.10	40.5221785	-104.5798339	0.07	
12679.00	89.780	357.910	6958.92	6503.69	6379.72	1418.38	40.5224391	-104.5798438	0.35	
12774.00	89.690	358.880	6959.36	6597.65	6474.68	1415.72	40.5226998	-104.5798498	1.03	

REFERENCE WELLPATH IDENTIFICATION			
Operator	NOBLE ENERGY, INC	Well	BISHOP A05-773
Field	WELD COUNTY (NOBLE NAD 83 GRID)	API/Legal	05-123-52068
Facility	SEC.07-T06N-R64W	Wellbore	BISHOP A05-773 AWB
Slot	SLOT#26 BISHOP A05-773 (1011'FNL & 418'FEL,SEC.07)		

WELLPATH DATA (186 stations)

MD [ft]	Inclination [°]	Azimuth [°]	TVD [ft]	Vert Sect [ft]	North [ft]	East [ft]	Latitude	Longitude	DLS [°/100ft]	Comments
12868.00	89.970	359.740	6959.63	6690.83	6568.68	1414.59	40.5229578	-104.5798504	0.96	
12963.00	89.850	359.830	6959.78	6785.10	6663.67	1414.23	40.5232186	-104.5798481	0.16	
13058.00	90.340	360.000	6959.63	6879.40	6758.67	1414.09	40.5234793	-104.5798451	0.55	
13152.00	90.250	359.860	6959.14	6972.71	6852.67	1413.97	40.5237373	-104.5798420	0.18	
13247.00	90.280	359.780	6958.70	7066.99	6947.67	1413.67	40.5239981	-104.5798395	0.09	
13342.00	89.750	359.530	6958.68	7161.23	7042.67	1413.10	40.5242589	-104.5798380	0.62	
13436.00	90.120	359.800	6958.78	7254.49	7136.67	1412.55	40.5245169	-104.5798365	0.49	
13531.00	90.000	357.740	6958.68	7348.53	7231.64	1410.51	40.5247776	-104.5798403	2.17	
13626.00	89.970	359.750	6958.71	7442.57	7326.61	1408.43	40.5250383	-104.5798442	2.12	
13721.00	90.280	359.780	6958.50	7536.84	7421.61	1408.04	40.5252991	-104.5798421	0.33	
13815.00	90.060	359.720	6958.22	7630.11	7515.61	1407.63	40.5255571	-104.5798400	0.24	
13910.00	90.220	359.830	6957.99	7724.38	7610.61	1407.26	40.5258178	-104.5798378	0.20	
14005.00	90.030	359.680	6957.78	7818.65	7705.61	1406.85	40.5260786	-104.5798357	0.25	
14099.00	90.150	359.920	6957.64	7911.93	7799.61	1406.53	40.5263366	-104.5798334	0.29	
14194.00	90.120	359.750	6957.41	8006.21	7894.61	1406.25	40.5265973	-104.5798308	0.18	
14289.00	90.000	359.830	6957.31	8100.49	7989.61	1405.90	40.5268581	-104.5798286	0.15	
14383.00	89.910	0.130	6957.39	8193.81	8083.61	1405.87	40.5271161	-104.5798252	0.33	
14478.00	89.970	359.800	6957.49	8288.12	8178.61	1405.81	40.5273768	-104.5798218	0.35	
14573.00	90.120	359.680	6957.41	8382.38	8273.60	1405.38	40.5276376	-104.5798198	0.20	
14668.00	89.970	359.690	6957.34	8476.63	8368.60	1404.86	40.5278984	-104.5798182	0.16	
14762.00	90.000	359.800	6957.36	8569.90	8462.60	1404.44	40.5281564	-104.5798162	0.12	
14857.00	90.120	359.760	6957.26	8664.17	8557.60	1404.08	40.5284171	-104.5798139	0.13	
14952.00	90.220	359.680	6956.98	8758.43	8652.60	1403.61	40.5286779	-104.5798120	0.13	
15046.00	90.650	359.600	6956.27	8851.68	8746.59	1403.02	40.5289359	-104.5798107	0.47	
15141.00	89.970	4.430	6955.75	8946.31	8841.51	1406.36	40.5291963	-104.5797951	5.13	
15236.00	89.720	2.660	6956.01	9041.14	8936.32	1412.24	40.5294564	-104.5797704	1.88	
15331.00	89.880	1.770	6956.34	9135.83	9031.25	1415.91	40.5297168	-104.5797537	0.95	
15425.00	89.820	359.650	6956.59	9229.28	9125.23	1417.07	40.5299747	-104.5797460	2.26	
15520.00	89.850	359.360	6956.86	9323.49	9220.23	1416.25	40.5302355	-104.5797454	0.31	
15615.00	89.880	359.580	6957.08	9417.70	9315.23	1415.37	40.5304962	-104.5797450	0.23	
15710.00	89.970	359.840	6957.21	9511.95	9410.22	1414.89	40.5307570	-104.5797432	0.29	
15805.00	89.820	359.900	6957.38	9606.24	9505.22	1414.68	40.5310177	-104.5797404	0.17	
15899.00	89.820	358.800	6957.68	9699.43	9599.22	1413.61	40.5312758	-104.5797408	1.17	
15994.00	90.060	359.490	6957.78	9793.57	9694.20	1412.19	40.5315365	-104.5797423	0.77	
16089.00	90.000	359.060	6957.73	9887.73	9789.20	1410.99	40.5317973	-104.5797431	0.46	
16183.00	89.910	358.730	6957.80	9980.82	9883.18	1409.18	40.5320553	-104.5797461	0.36	
16278.00	90.000	358.520	6957.88	10074.83	9978.15	1406.90	40.5323160	-104.5797507	0.24	
16373.00	90.000	358.410	6957.88	10168.81	10073.12	1404.35	40.5325767	-104.5797564	0.12	
16467.00	89.970	358.460	6957.90	10261.79	10167.08	1401.79	40.5328347	-104.5797621	0.06	
16562.00	89.910	358.810	6958.00	10355.81	10262.06	1399.52	40.5330954	-104.5797667	0.37	
16657.00	89.970	358.850	6958.10	10449.87	10357.04	1397.58	40.5333562	-104.5797701	0.08	
16751.00	89.910	358.600	6958.20	10542.92	10451.01	1395.49	40.5336142	-104.5797741	0.27	
16941.00	89.970	358.770	6958.40	10730.98	10640.96	1391.13	40.5341357	-104.5797827	0.09	
17036.00	89.970	358.610	6958.45	10825.01	10735.94	1388.96	40.5343964	-104.5797870	0.17	
17130.00	89.820	358.510	6958.62	10918.02	10829.91	1386.60	40.5346544	-104.5797920	0.19	

REFERENCE WELLPATH IDENTIFICATION			
Operator	NOBLE ENERGY, INC	Well	BISHOP A05-773
Field	WELD COUNTY (NOBLE NAD 83 GRID)	API/Legal	05-123-52068
Facility	SEC.07-T06N-R64W	Wellbore	BISHOP A05-773 AWB
Slot	SLOT#26 BISHOP A05-773 (1011'FNL & 418'FEL,SEC.07)		

WELLPATH DATA (186 stations) † = interpolated, ‡ = extrapolated station										
MD [ft]	Inclination [°]	Azimuth [°]	TVD [ft]	Vert Sect [ft]	North [ft]	East [ft]	Latitude	Longitude	DLS [°/100ft]	Comments
17225.00	90.120	358.790	6958.67	11012.05	10924.88	1384.36	40.5349151	-104.5797965	0.43	
17320.00	89.880	358.860	6958.67	11106.11	11019.86	1382.41	40.5351759	-104.5797999	0.26	
17415.00	89.910	358.720	6958.84	11200.16	11114.84	1380.40	40.5354366	-104.5798036	0.15	
17510.00	90.000	358.870	6958.92	11294.22	11209.82	1378.41	40.5356973	-104.5798073	0.18	
17604.00	89.940	356.460	6958.97	11387.00	11303.73	1374.58	40.5359552	-104.5798175	2.56	Last BH MWD Survey
17687.00‡	89.940	356.460	6959.05	11468.63	11386.57	1369.45	40.5361827	-104.5798329	0.00	Projection to Bit (201'FNL & 988'FWL,SEC.32)

REFERENCE WELLPATH IDENTIFICATION			
Operator	NOBLE ENERGY, INC	Well	BISHOP A05-773
Field	WELD COUNTY (NOBLE NAD 83 GRID)	API/Legal	05-123-52068
Facility	SEC.07-T06N-R64W	Wellbore	BISHOP A05-773 AWB
Slot	SLOT#26 BISHOP A05-773 (1011'FNL & 418'FEL,SEC.07)		

TARGETS								
Name	TVD [ft]	North [ft]	East [ft]	Grid East [US ft]	Grid North [US ft]	Latitude	Longitude	Shape
OGDP 1 SEC.07-T06N-R64W	1.00	149.68	-6.55	3254380.72	1428262.61	40.5053800	-104.5852000	polygon
	2D Polygon: dimensions not calculated							
OGDP 1 SEC.08-T06N-R64W	1.00	149.68	-6.55	3254380.72	1428262.61	40.5053800	-104.5852000	polygon
	2D Polygon: dimensions not calculated							
OGDP1 SEC.05-T06N-R64W	19.00	168.11	-4258.91	3250128.51	1428281.04	40.5055500	-104.6004900	polygon
	2D Polygon: dimensions not calculated							
OGDP1 SEC.06-T06N-R64W	19.00	168.11	-4258.91	3250128.51	1428281.04	40.5055500	-104.6004900	polygon
	2D Polygon: dimensions not calculated							
OGDP1 SEC.31-T07N-R64W	19.00	168.11	-4258.91	3250128.51	1428281.04	40.5055500	-104.6004900	polygon
	2D Polygon: dimensions not calculated							
OGDP1 SEC.32-T07N-R64W	19.00	168.11	-4258.91	3250128.51	1428281.04	40.5055500	-104.6004900	polygon
	2D Polygon: dimensions not calculated							
BISHOP A05-773 BHL Rev-1 (200'FSL & 993'FWL,SEC.32)	6913.00	11387.78	1374.05	3255761.27	1439500.31	40.5361859	-104.5798163	point
BISHOP A05-773 LP Rev-1 (200'FSL & 1096'FWL,SEC.05)	6913.00	1247.11	1503.95	3255891.17	1429360.00	40.5083492	-104.5797276	point
BISHOP A05-773 BHL Rev-2 (200'FSL & 993'FWL,SEC.32)	6955.00	11387.78	1374.05	3255761.27	1439500.31	40.5361859	-104.5798163	point
BISHOP A05-773 LP Rev-2 (200'FSL & 1096'FWL,SEC.05)	6955.00	1247.11	1503.95	3255891.17	1429360.00	40.5083492	-104.5797276	point
DP 136 Hardlines (200'FNL/FSL & 300'FEL/FWL)	7002.00	149.87	-22.68	3254364.58	1428262.81	40.5053810	-104.5852580	polygon
	2D Polygon: dimensions not calculated							

WELLPATH COMPOSITION - Ref Wellbore: BISHOP A05-773 AWB Ref Wellpath: BISHOP A05-773 AWP					
Start MD [ft]	End MD [ft]	Positional Uncertainty Model	Log Name/Comment	Wellbore	Survey Date
29.00	2017.00	OWSG MWD rev2 (MS+IFR1)	13.5" NaviTrak Surface OWSG MWD rev2 (MS + IFR1) <134'-2017>	BISHOP A05-773 AWB	2/14/2024
2017.00	17687.00	OWSG MWD rev2 (MS+IFR1)	8.5" Lucida OWSG MWD rev2 <2163'-17604>	BISHOP A05-773 AWB	3/5/2024

REFERENCE WELLPATH IDENTIFICATION			
Operator	NOBLE ENERGY, INC	Well	BISHOP A05-773
Field	WELD COUNTY (NOBLE NAD 83 GRID)	API/Legal	05-123-52068
Facility	SEC.07-T06N-R64W	Wellbore	BISHOP A05-773 AWB
Slot	SLOT#26 BISHOP A05-773 (1011'FNL & 418'FEL,SEC.07)		

WELLPATH COMMENTS				
MD [ft]	Inclination [°]	Azimuth [°]	TVD [ft]	Comment
134.00	0.540	247.790	134.00	First BH MWD Survey
7544.53	88.663	358.225	6950.27	Cross 200' Hardline (200'FSL & 1110'FWL,SEC.05)
7547.00	88.792	358.112	6950.32	Shallowest MD for Perf
17604.00	89.940	356.460	6958.97	Last BH MWD Survey
17687.00	89.940	356.460	6959.05	Projection to Bit (201'FNL & 988'FWL,SEC.32)