

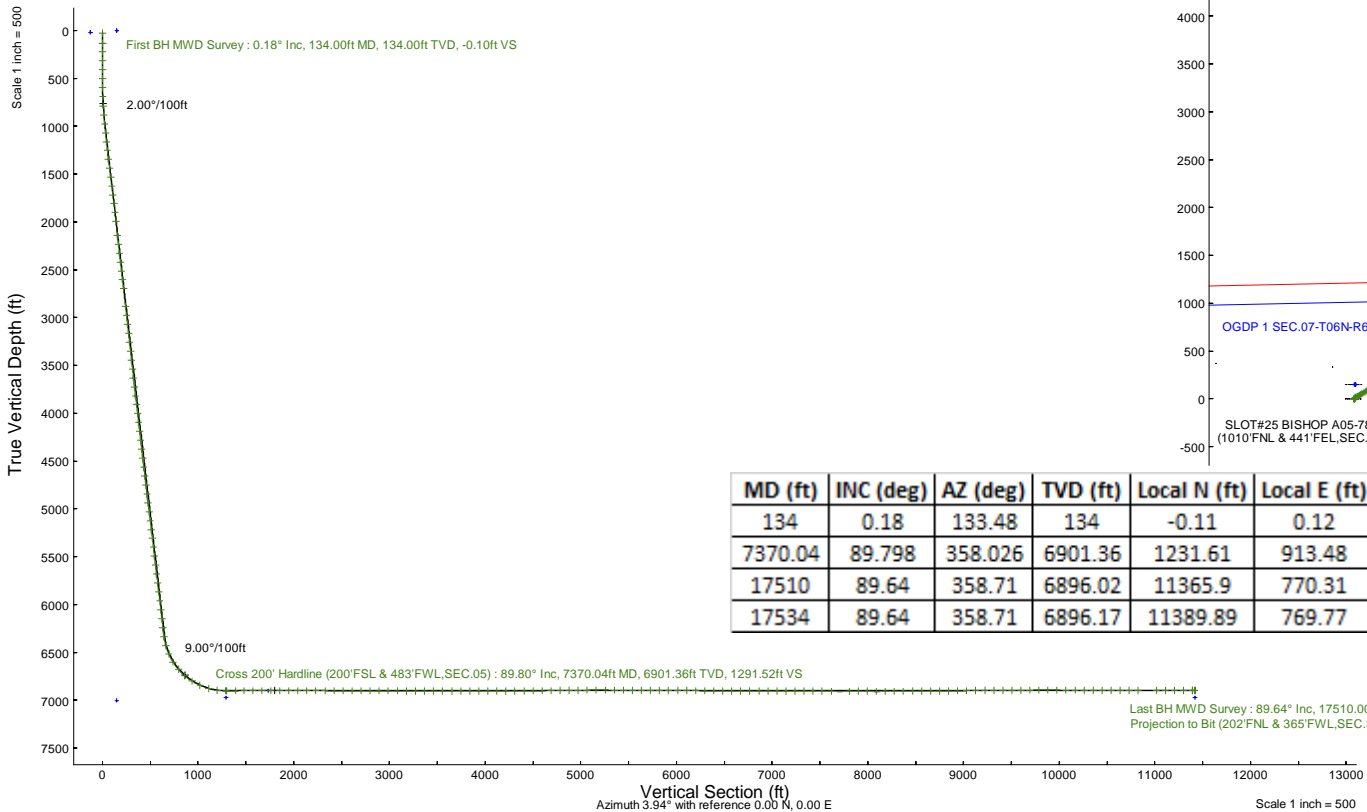
NOBLE ENERGY, INC

Location: COLORADO Slot: SLOT#25 BISHOP A05-783 (1010'FNL & 441'FEL,SEC.07)
 Field: WELD COUNTY (NOBLE NAD 83 GRID) Well: BISHOP A05-783
 Facility: SEC.07-T06N-R64W Wellbore: BISHOP A05-783 PWB

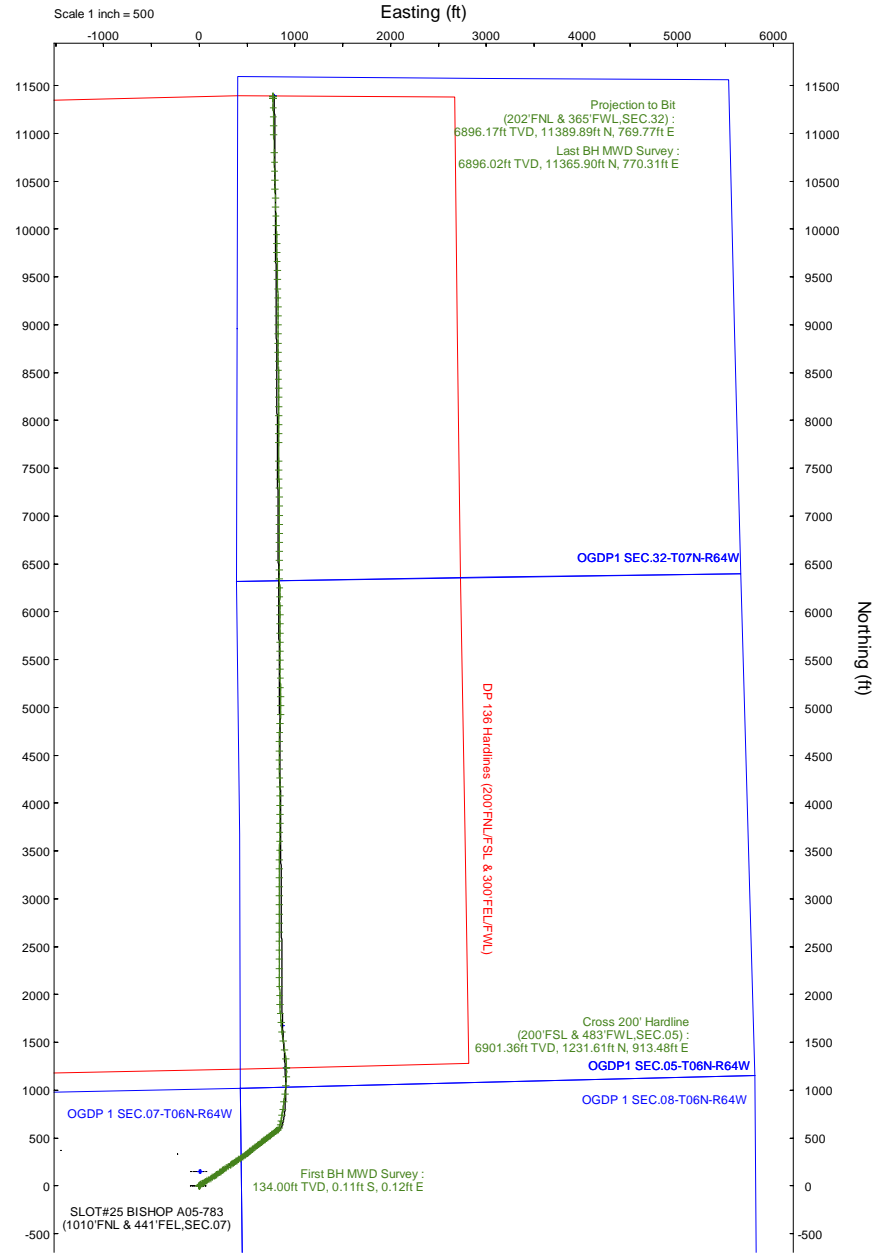
Plot reference wellpath is BISHOP A05-783 (REV-D.0) PWP
 True vertical depths are referenced to RIG (4744'GL+29'KB@4773'RKB) (RKB)
 Reference wellpath measured depths are referenced to RIG (4744'GL+29'KB@4773'RKB) (RKB)
 RIG (4744'GL+29'KB@4773'RKB) (RKB) to Mean Sea Level: 4773 feet
 Mean Sea Level to Ground level (At Slot: SLOT#25 BISHOP A05-783 (1010'FNL & 441'FEL,SEC.07)): 0 feet
 Offset wellpath MDs are referenced to each path's default MD datum
 Grid System: NAD83 / Lambert Colorado SP, Northern Zone (501), US feet
 North Reference: Grid north
 Scale: True distance
 Coordinates are in feet referenced to Slot
 Depths are in feet
 Created by: martsam01 on 2024-04-30; Database: WA_Denver

Location Information

Facility Name		Grid East (US ft)	Grid North (US ft)	Latitude	Longitude	
SEC.07-T06N-R64W		3254380.716	1428262.611	40°30'19.3680"N	104°35'6.7200"W	
Slot	Local N (ft)	Local E (ft)	Grid East (US ft)	Grid North (US ft)	Latitude	Longitude
SLOT#25 BISHOP A05-783 (1010'FNL & 441'FEL,SEC.07)	-149.54	-15.98	3254364.739	1428113.073	40°30'17.8920"N	104°35'6.9468"W
RIG (4744'GL+29'KB@4773'RKB) (RKB) to Ground level (At Slot: SLOT#25 BISHOP A05-783 (1010'FNL & 441'FEL,SEC.07))					4773ft	
Mean Sea Level to Ground level (At Slot: SLOT#25 BISHOP A05-783 (1010'FNL & 441'FEL,SEC.07))					0ft	
RIG (4744'GL+29'KB@4773'RKB) (RKB) to Mean Sea Level					4773ft	



MD (ft)	INC (deg)	AZ (deg)	TVD (ft)	Local N (ft)	Local E (ft)	Comment
134	0.18	133.48	134	-0.11	0.12	First BH MWD Survey
7370.04	89.798	358.026	6901.36	1231.61	913.48	Cross 200' Hardline (200'FSL & 483'FWL,SEC.05)
17510	89.64	358.71	6896.02	11365.9	770.31	Last BH MWD Survey
17534	89.64	358.71	6896.17	11389.89	769.77	Projection to Bit (202'FNL & 365'FWL,SEC.32)



Last BH MWD Survey : 89.64° Inc, 17510.00ft MD, 6896.02ft TVD, 11391.96ft VS
 Projection to Bit (202'FNL & 365'FWL,SEC.32) : 89.64° Inc, 17534.00ft MD, 6896.17ft TVD, 11415.86ft VS

REFERENCE WELLPATH IDENTIFICATION			
Operator	NOBLE ENERGY, INC	Well	BISHOP A05-783
Field	WELD COUNTY (NOBLE NAD 83 GRID)	API/Legal	05-123-52067
Facility	SEC.07-T06N-R64W	Wellbore	BISHOP A05-783 AWB
Slot	SLOT#25 BISHOP A05-783 (1010'FNL & 441'FEL,SEC.07)		

REPORT SETUP INFORMATION			
Projection System	NAD83 / Lambert Colorado SP, Northern Zone (501), US feet	Software System	WellArchitect® 6.0
North Reference	Grid	User	Martsam01
Scale	0.999967	Report Generated	4/25/2024 at 11:27:19 PM
Convergence at slot	0.59° East	Database	WA_Denver

WELLPATH LOCATION						
	Local coordinates		Grid coordinates		Geographic coordinates	
	North[ft]	East[ft]	Easting[US ft]	Northing[US ft]	Latitude	Longitude
Slot Location	-149.54	-15.98	3254364.74	1428113.07	40.5049700°	-104.5852630°
Facility Reference Pt			3254380.72	1428262.61	40.5053800°	-104.5852000°
Field Reference Pt			3000000.00	4454105.15	48.7761986°	-105.5000000°

WELLPATH DATUM			
Calculation method	Minimum curvature	RIG (4744'GL+29'KB@4773'RKB) (RKB) to Facility Vertical Datum	4773.00ft
Horizontal Reference Pt	Slot	RIG (4744'GL+29'KB@4773'RKB) (RKB) to Mean Sea Level	4773.00ft
Vertical Reference Pt	RIG (4744'GL+29'KB@4773'RKB) (RKB)	RIG (4744'GL+29'KB@4773'RKB) (RKB) to Ground Level at Slot (SLOT#25 BISHOP A05-783 (1010'FNL & 441'FEL,SEC.07))	4773.00ft
MD Reference Pt	RIG (4744'GL+29'KB@4773'RKB) (RKB)	Section Origin	N 0.00, E 0.00 ft
Field Vertical Reference	Mean Sea Level	Section Azimuth	3.94°

REFERENCE WELLPATH IDENTIFICATION			
Operator	NOBLE ENERGY, INC	Well	BISHOP A05-783
Field	WELD COUNTY (NOBLE NAD 83 GRID)	API/Legal	05-123-52067
Facility	SEC.07-T06N-R64W	Wellbore	BISHOP A05-783 AWB
Slot	SLOT#25 BISHOP A05-783 (1010'FNL & 441'FEL,SEC.07)		

WELLPATH DATA (186 stations) † = interpolated, ‡ = extrapolated station

MD [ft]	Inclination [°]	Azimuth [°]	TVD [ft]	Vert Sect [ft]	North [ft]	East [ft]	Latitude	Longitude	DLS [°/100ft]	Comments
0.00†	0.000	133.480	0.00	0.00	0.00	0.00	40.5049700	-104.5852630	0.00	
29.00	0.000	133.480	29.00	0.00	0.00	0.00	40.5049700	-104.5852630	0.00	
134.00	0.180	133.480	134.00	-0.10	-0.11	0.12	40.5049697	-104.5852626	0.17	First BH MWD Survey
224.00	0.340	50.400	224.00	-0.01	-0.04	0.43	40.5049699	-104.5852615	0.41	
314.00	0.220	65.300	314.00	0.26	0.20	0.79	40.5049705	-104.5852601	0.15	
408.00	0.440	65.010	408.00	0.52	0.43	1.28	40.5049711	-104.5852584	0.23	
503.00	0.570	63.150	502.99	0.94	0.80	2.03	40.5049721	-104.5852557	0.14	
598.00	0.800	42.210	597.99	1.70	1.50	2.90	40.5049740	-104.5852525	0.35	
692.00	2.630	40.780	691.94	3.94	3.62	4.75	40.5049798	-104.5852458	1.95	
787.00	4.610	43.230	786.75	8.64	8.05	8.79	40.5049919	-104.5852311	2.09	
882.00	6.330	52.940	881.31	15.03	13.99	15.58	40.5050080	-104.5852064	2.05	
976.00	8.780	56.630	974.49	22.78	21.06	25.71	40.5050271	-104.5851698	2.66	
1071.00	10.010	58.100	1068.21	32.01	29.41	38.78	40.5050496	-104.5851225	1.32	
1166.00	10.350	59.930	1161.72	41.62	38.05	53.17	40.5050729	-104.5850704	0.49	
1260.00	10.960	59.410	1254.10	51.41	46.83	68.17	40.5050966	-104.5850161	0.66	
1355.00	11.680	58.390	1347.25	62.12	56.47	84.14	40.5051226	-104.5849584	0.79	
1450.00	12.600	58.490	1440.12	73.72	66.92	101.16	40.5051508	-104.5848968	0.97	
1544.00	13.270	58.650	1531.74	85.90	77.89	119.11	40.5051804	-104.5848318	0.71	
1639.00	11.500	57.570	1624.52	97.82	88.65	136.42	40.5052094	-104.5847692	1.88	
1733.00	11.250	55.820	1716.68	109.04	98.82	151.92	40.5052369	-104.5847131	0.45	
1828.00	10.610	55.810	1809.95	120.16	108.94	166.82	40.5052643	-104.5846591	0.67	
1923.00	10.120	56.100	1903.40	130.68	118.51	180.98	40.5052902	-104.5846078	0.52	
2014.00	9.530	56.260	1993.07	140.19	127.16	193.88	40.5053135	-104.5845611	0.65	
2163.00	10.350	55.090	2139.83	156.13	141.67	215.11	40.5053527	-104.5844842	0.57	
2258.00	10.400	55.390	2233.28	166.82	151.42	229.17	40.5053791	-104.5844333	0.08	
2352.00	10.430	55.320	2325.73	177.42	161.08	243.15	40.5054052	-104.5843827	0.03	
2447.00	10.180	55.360	2419.19	188.03	170.75	257.13	40.5054314	-104.5843321	0.26	
2542.00	10.330	55.950	2512.68	198.51	180.29	271.09	40.5054572	-104.5842815	0.19	
2636.00	10.300	56.030	2605.16	208.86	189.70	285.04	40.5054826	-104.5842310	0.04	
2731.00	10.360	55.710	2698.62	219.36	199.26	299.14	40.5055084	-104.5841799	0.09	
2921.00	10.500	55.540	2885.48	240.69	218.68	327.53	40.5055609	-104.5840771	0.08	
3015.00	10.720	55.220	2977.87	251.48	228.51	341.78	40.5055875	-104.5840256	0.24	
3110.00	10.210	57.300	3071.29	262.03	238.10	356.12	40.5056134	-104.5839736	0.67	
3205.00	10.530	53.710	3164.74	272.66	247.79	370.20	40.5056396	-104.5839226	0.76	
3299.00	9.630	58.740	3257.29	282.74	256.95	383.84	40.5056644	-104.5838732	1.34	
3394.00	10.270	56.010	3350.86	292.53	265.81	397.66	40.5056883	-104.5838232	0.84	
3489.00	10.310	55.890	3444.33	302.98	275.31	411.72	40.5057140	-104.5837723	0.05	
3584.00	10.200	55.500	3537.82	313.45	284.85	425.69	40.5057398	-104.5837217	0.14	
3678.00	10.170	56.540	3630.33	323.66	294.14	439.47	40.5057649	-104.5836718	0.20	
3773.00	10.380	55.410	3723.81	334.09	303.62	453.52	40.5057905	-104.5836210	0.31	
3868.00	10.390	54.780	3817.25	344.83	313.42	467.56	40.5058170	-104.5835701	0.12	
3962.00	10.340	51.740	3909.72	355.85	323.53	481.11	40.5058444	-104.5835210	0.58	
4057.00	9.980	52.600	4003.23	367.02	333.81	494.34	40.5058722	-104.5834730	0.41	
4152.00	9.770	52.230	4096.82	377.82	343.75	507.25	40.5058991	-104.5834263	0.23	
4247.00	9.740	52.540	4190.45	388.50	353.57	520.00	40.5059257	-104.5833800	0.06	

REFERENCE WELLPATH IDENTIFICATION			
Operator	NOBLE ENERGY, INC	Well	BISHOP A05-783
Field	WELD COUNTY (NOBLE NAD 83 GRID)	API/Legal	05-123-52067
Facility	SEC.07-T06N-R64W	Wellbore	BISHOP A05-783 AWB
Slot	SLOT#25 BISHOP A05-783 (1010'FNL & 441'FEL,SEC.07)		

WELLPATH DATA (186 stations) † = interpolated, ‡ = extrapolated station

MD [ft]	Inclination [°]	Azimuth [°]	TVD [ft]	Vert Sect [ft]	North [ft]	East [ft]	Latitude	Longitude	DLS [°/100ft]	Comments
4341.00	9.530	52.730	4283.12	398.88	363.12	532.51	40.5059516	-104.5833347	0.23	
4436.00	10.000	51.690	4376.75	409.61	372.99	545.24	40.5059783	-104.5832886	0.53	
4531.00	9.920	52.730	4470.32	420.55	383.06	558.22	40.5060056	-104.5832415	0.21	
4625.00	10.210	53.110	4562.87	431.33	392.97	571.33	40.5060324	-104.5831940	0.32	
4720.00	10.190	52.170	4656.37	442.43	403.18	584.70	40.5060600	-104.5831456	0.18	
4815.00	10.180	52.230	4749.87	453.62	413.47	597.97	40.5060879	-104.5830974	0.02	
4910.00	10.110	52.550	4843.39	464.72	423.68	611.23	40.5061156	-104.5830494	0.09	
5005.00	10.590	52.250	4936.84	476.04	434.10	624.75	40.5061438	-104.5830004	0.51	
5099.00	10.710	52.190	5029.22	487.60	444.74	638.48	40.5061726	-104.5829506	0.13	
5194.00	10.440	52.520	5122.61	499.17	455.39	652.29	40.5062014	-104.5829006	0.29	
5289.00	10.310	52.790	5216.05	510.46	465.77	665.89	40.5062295	-104.5828513	0.15	
5383.00	10.310	52.710	5308.54	521.54	475.95	679.28	40.5062571	-104.5828028	0.02	
5478.00	9.610	52.190	5402.10	532.43	485.96	692.31	40.5062842	-104.5827555	0.74	
5573.00	9.350	52.970	5495.81	542.77	495.47	704.73	40.5063099	-104.5827105	0.31	
5668.00	10.790	51.940	5589.34	553.78	505.60	717.90	40.5063374	-104.5826628	1.53	
5763.00	10.520	52.580	5682.70	565.46	516.35	731.79	40.5063665	-104.5826125	0.31	
5857.00	10.200	52.390	5775.17	576.65	526.65	745.19	40.5063944	-104.5825639	0.34	
5952.00	10.420	52.190	5868.64	587.95	537.05	758.64	40.5064225	-104.5825151	0.23	
6047.00	10.110	52.030	5962.12	599.24	547.44	772.00	40.5064507	-104.5824667	0.33	
6142.00	10.190	52.310	6055.63	610.39	557.71	785.23	40.5064785	-104.5824187	0.10	
6237.00	9.140	52.670	6149.28	620.96	567.43	797.88	40.5065048	-104.5823729	1.11	
6331.00	9.010	52.790	6242.10	630.72	576.40	809.68	40.5065291	-104.5823301	0.14	
6426.00	11.210	49.910	6335.62	642.04	586.85	822.67	40.5065574	-104.5822830	2.38	
6521.00	17.480	25.480	6427.69	661.77	605.71	835.89	40.5066088	-104.5822348	9.04	
6616.00	23.080	14.000	6516.81	693.41	636.70	846.55	40.5066935	-104.5821953	7.21	
6710.00	32.530	8.660	6599.87	736.85	679.66	854.83	40.5068112	-104.5821639	10.39	
6808.00	40.460	9.160	6678.59	794.86	737.20	863.88	40.5069689	-104.5821293	8.10	
6900.00	49.430	9.140	6743.64	859.52	801.30	874.20	40.5071445	-104.5820897	9.75	
6995.00	58.450	7.570	6799.51	936.01	877.21	885.29	40.5073526	-104.5820470	9.59	
7090.00	66.380	6.490	6843.46	1020.02	960.71	895.56	40.5075815	-104.5820070	8.41	
7184.00	73.010	5.720	6876.06	1108.07	1048.32	904.91	40.5078217	-104.5819701	7.09	
7279.00	83.090	3.470	6895.71	1200.88	1140.84	912.31	40.5080754	-104.5819400	10.86	
7370.04†	89.798	358.026	6901.36	1291.52	1231.61	913.48	40.5083245	-104.5819325	9.48	Cross 200' Hardline (200'FSL & 483'FWL,SEC.05)
7373.00†	90.016	357.850	6901.36	1294.46	1234.57	913.38	40.5083326	-104.5819327	9.48	Shallowest MD for Perf
7374.00	90.090	357.790	6901.36	1295.45	1235.57	913.34	40.5083354	-104.5819328	9.48	
7469.00	90.520	352.120	6900.86	1389.25	1330.16	904.99	40.5085952	-104.5819593	5.99	
7563.00	90.000	351.490	6900.43	1481.14	1423.20	891.59	40.5088510	-104.5820041	0.87	
7658.00	90.030	351.680	6900.41	1573.94	1517.17	877.69	40.5091093	-104.5820506	0.20	
7753.00	90.060	353.770	6900.33	1667.12	1611.40	865.66	40.5093683	-104.5820903	2.20	
7848.00	90.120	354.060	6900.18	1760.67	1705.87	855.59	40.5096278	-104.5821230	0.31	
7942.00	90.090	356.050	6900.01	1853.54	1799.51	847.49	40.5098851	-104.5821486	2.12	
8037.00	90.000	358.710	6899.94	1947.91	1894.41	843.14	40.5101457	-104.5821607	2.80	
8132.00	90.250	359.150	6899.73	2042.54	1989.39	841.37	40.5104064	-104.5821636	0.53	
8226.00	89.880	359.150	6899.62	2136.21	2083.38	839.98	40.5106644	-104.5821651	0.39	
8321.00	89.660	359.390	6900.00	2230.90	2178.37	838.76	40.5109252	-104.5821659	0.34	

REFERENCE WELLPATH IDENTIFICATION			
Operator	NOBLE ENERGY, INC	Well	BISHOP A05-783
Field	WELD COUNTY (NOBLE NAD 83 GRID)	API/Legal	05-123-52067
Facility	SEC.07-T06N-R64W	Wellbore	BISHOP A05-783 AWB
Slot	SLOT#25 BISHOP A05-783 (1010'FNL & 441'FEL,SEC.07)		

WELLPATH DATA (186 stations)

MD [ft]	Inclination [°]	Azimuth [°]	TVD [ft]	Vert Sect [ft]	North [ft]	East [ft]	Latitude	Longitude	DLS [°/100ft]	Comments
8416.00	89.600	358.620	6900.62	2325.54	2273.35	837.12	40.5111859	-104.5821683	0.81	
8511.00	89.690	358.820	6901.20	2420.14	2368.33	834.99	40.5114467	-104.5821724	0.23	
8605.00	90.030	0.100	6901.43	2513.85	2462.32	834.11	40.5117047	-104.5821721	1.41	
8700.00	89.880	0.430	6901.51	2608.66	2557.32	834.55	40.5119654	-104.5821670	0.38	
8795.00	90.120	0.290	6901.51	2703.47	2652.32	835.14	40.5122261	-104.5821613	0.29	
8890.00	90.220	0.400	6901.23	2798.29	2747.31	835.72	40.5124869	-104.5821557	0.16	
8984.00	89.880	359.710	6901.14	2892.07	2841.31	835.81	40.5127448	-104.5821519	0.82	
9079.00	90.000	0.030	6901.24	2986.83	2936.31	835.59	40.5130056	-104.5821491	0.36	
9174.00	89.540	0.200	6901.63	3081.61	3031.31	835.78	40.5132663	-104.5821449	0.52	
9269.00	89.850	0.400	6902.13	3176.42	3126.31	836.28	40.5135271	-104.5821396	0.39	
9364.00	90.180	0.580	6902.11	3271.25	3221.31	837.09	40.5137878	-104.5821331	0.40	
9458.00	90.030	0.390	6901.93	3365.08	3315.30	837.89	40.5140457	-104.5821267	0.26	
9553.00	88.800	0.740	6902.90	3459.91	3410.29	838.82	40.5143064	-104.5821198	1.35	
9648.00	90.150	0.440	6903.77	3554.74	3505.28	839.80	40.5145671	-104.5821128	1.46	
9743.00	90.090	0.520	6903.58	3649.56	3600.28	840.60	40.5148278	-104.5821064	0.11	
9837.00	90.280	0.440	6903.27	3743.39	3694.27	841.38	40.5150858	-104.5821001	0.22	
9932.00	90.000	0.660	6903.04	3838.22	3789.27	842.30	40.5153465	-104.5820932	0.37	
10027.00	89.570	1.060	6903.40	3933.08	3884.26	843.72	40.5156072	-104.5820846	0.62	
10122.00	90.180	359.370	6903.60	4027.88	3979.25	844.08	40.5158679	-104.5820798	1.89	
10217.00	90.180	359.250	6903.31	4122.57	4074.24	842.93	40.5161287	-104.5820803	0.13	
10311.00	90.030	359.200	6903.13	4216.25	4168.23	841.66	40.5163867	-104.5820814	0.17	
10406.00	90.180	359.310	6902.96	4310.93	4263.23	840.43	40.5166474	-104.5820823	0.20	
10501.00	90.550	359.640	6902.35	4405.64	4358.22	839.56	40.5169082	-104.5820819	0.52	
10596.00	90.340	359.380	6901.62	4500.35	4453.21	838.75	40.5171689	-104.5820813	0.35	
10690.00	90.620	359.760	6900.83	4594.08	4547.21	838.04	40.5174269	-104.5820803	0.50	
10785.00	90.340	0.240	6900.03	4688.85	4642.20	838.04	40.5176877	-104.5820768	0.58	
10879.00	90.710	2.580	6899.17	4782.74	4736.16	840.35	40.5179455	-104.5820650	2.52	
10974.00	90.950	3.150	6897.80	4877.72	4831.04	845.10	40.5182058	-104.5820444	0.65	
11069.00	91.110	1.150	6896.09	4972.65	4925.95	848.66	40.5184662	-104.5820280	2.11	
11163.00	91.260	359.660	6894.14	5066.45	5019.92	849.33	40.5187241	-104.5820221	1.59	
11258.00	89.820	359.390	6893.25	5161.16	5114.91	848.54	40.5189848	-104.5820214	1.54	
11353.00	89.570	359.440	6893.75	5255.86	5209.91	847.57	40.5192456	-104.5820214	0.27	
11448.00	89.750	359.470	6894.32	5350.57	5304.90	846.67	40.5195063	-104.5820211	0.19	
11542.00	89.570	359.420	6894.88	5444.28	5398.89	845.76	40.5197643	-104.5820209	0.20	
11637.00	89.570	359.400	6895.59	5538.98	5493.89	844.78	40.5200251	-104.5820209	0.02	
11732.00	89.750	359.370	6896.15	5633.68	5588.88	843.76	40.5202858	-104.5820210	0.19	
11826.00	89.380	0.340	6896.87	5727.43	5682.88	843.52	40.5205438	-104.5820183	1.10	
11921.00	89.940	359.700	6897.43	5822.21	5777.87	843.55	40.5208046	-104.5820147	0.90	
12016.00	89.750	359.630	6897.69	5916.94	5872.87	843.00	40.5210653	-104.5820131	0.21	
12111.00	89.510	359.340	6898.30	6011.65	5967.86	842.14	40.5213261	-104.5820127	0.40	
12205.00	89.050	358.900	6899.48	6105.31	6061.85	840.70	40.5215841	-104.5820144	0.68	
12300.00	89.720	1.110	6900.50	6200.07	6156.83	840.71	40.5218448	-104.5820108	2.43	
12395.00	89.690	359.040	6900.99	6294.85	6251.83	840.83	40.5221055	-104.5820068	2.18	
12489.00	89.690	359.050	6901.50	6388.51	6345.81	839.27	40.5223635	-104.5820090	0.01	
12584.00	89.690	358.960	6902.01	6483.15	6440.80	837.62	40.5226243	-104.5820113	0.09	

REFERENCE WELLPATH IDENTIFICATION			
Operator	NOBLE ENERGY, INC	Well	BISHOP A05-783
Field	WELD COUNTY (NOBLE NAD 83 GRID)	API/Legal	05-123-52067
Facility	SEC.07-T06N-R64W	Wellbore	BISHOP A05-783 AWB
Slot	SLOT#25 BISHOP A05-783 (1010'FNL & 441'FEL,SEC.07)		

WELLPATH DATA (186 stations)

MD [ft]	Inclination [°]	Azimuth [°]	TVD [ft]	Vert Sect [ft]	North [ft]	East [ft]	Latitude	Longitude	DLS ["/100ft]	Comments
12679.00	89.750	0.200	6902.48	6577.87	6535.79	836.92	40.5228850	-104.5820103	1.31	
12774.00	89.940	359.390	6902.73	6672.62	6630.79	836.58	40.5231458	-104.5820080	0.88	
12868.00	89.630	0.130	6903.09	6766.37	6724.79	836.19	40.5234038	-104.5820059	0.85	
12963.00	89.630	0.130	6903.70	6861.16	6819.79	836.40	40.5236645	-104.5820016	0.00	
13058.00	89.720	0.010	6904.24	6955.94	6914.78	836.52	40.5239253	-104.5819977	0.16	
13152.00	89.820	359.280	6904.62	7049.68	7008.78	835.94	40.5241833	-104.5819962	0.78	
13247.00	89.230	0.260	6905.40	7144.42	7103.77	835.55	40.5244440	-104.5819941	1.20	
13342.00	89.910	359.650	6906.12	7239.19	7198.77	835.48	40.5247047	-104.5819908	0.96	
13437.00	90.120	359.380	6906.09	7333.90	7293.77	834.68	40.5249655	-104.5819902	0.36	
13531.00	90.090	359.260	6905.92	7427.60	7387.76	833.56	40.5252235	-104.5819907	0.13	
13626.00	89.630	359.270	6906.15	7522.28	7482.75	832.34	40.5254843	-104.5819915	0.48	
13721.00	89.420	358.750	6906.94	7616.92	7577.73	830.70	40.5257450	-104.5819939	0.59	
13910.00	90.680	0.090	6906.77	7805.33	7766.72	828.79	40.5262638	-104.5819937	0.97	
14005.00	90.740	359.700	6905.60	7900.08	7861.71	828.61	40.5265245	-104.5819908	0.42	
14099.00	88.520	0.440	6906.20	7993.86	7955.70	828.73	40.5267825	-104.5819869	2.49	
14194.00	90.070	0.510	6907.37	8088.67	8050.69	829.52	40.5270432	-104.5819805	1.63	
14289.00	90.440	359.270	6906.95	8183.43	8145.68	829.33	40.5273039	-104.5819777	1.36	
14384.00	89.580	0.340	6906.93	8278.18	8240.68	829.01	40.5275646	-104.5819753	1.45	
14478.00	90.750	359.530	6906.66	8371.95	8334.68	828.90	40.5278226	-104.5819722	1.51	
14573.00	90.260	359.470	6905.83	8466.66	8429.67	828.07	40.5280834	-104.5819716	0.52	
14668.00	90.630	359.480	6905.09	8561.37	8524.66	827.20	40.5283441	-104.5819712	0.39	
14762.00	90.590	359.250	6904.09	8655.06	8618.65	826.16	40.5286021	-104.5819715	0.25	
14857.00	90.660	359.880	6903.05	8749.78	8713.64	825.44	40.5288629	-104.5819705	0.67	
14952.00	90.290	359.490	6902.26	8844.51	8808.64	824.92	40.5291236	-104.5819688	0.57	
15047.00	90.530	359.280	6901.58	8939.21	8903.63	823.90	40.5293844	-104.5819690	0.34	
15141.00	90.690	359.810	6900.58	9032.93	8997.62	823.15	40.5296424	-104.5819682	0.59	
15236.00	90.590	359.250	6899.52	9127.64	9092.61	822.37	40.5299031	-104.5819674	0.60	
15331.00	90.440	359.870	6898.67	9222.36	9187.61	821.64	40.5301639	-104.5819665	0.67	
15425.00	90.440	359.460	6897.95	9316.09	9281.60	821.09	40.5304219	-104.5819650	0.44	
15520.00	90.660	359.370	6897.03	9410.79	9376.59	820.12	40.5306826	-104.5819649	0.25	
15615.00	90.530	359.220	6896.05	9505.48	9471.58	818.96	40.5309434	-104.5819656	0.21	
15710.00	90.630	358.740	6895.09	9600.11	9566.56	817.26	40.5312041	-104.5819682	0.52	
15805.00	90.380	357.790	6894.25	9694.64	9661.51	814.39	40.5314648	-104.5819750	1.03	
15899.00	90.500	358.670	6893.53	9788.17	9755.46	811.49	40.5317227	-104.5819819	0.94	
15994.00	89.670	358.680	6893.39	9882.77	9850.44	809.29	40.5319835	-104.5819863	0.87	
16089.00	89.670	358.650	6893.93	9977.37	9945.41	807.08	40.5322442	-104.5819907	0.03	
16183.00	89.730	357.740	6894.42	10070.89	10039.36	804.11	40.5325022	-104.5819979	0.97	
16278.00	89.760	358.590	6894.85	10165.41	10134.31	801.07	40.5327628	-104.5820053	0.90	
16373.00	89.860	358.340	6895.16	10259.97	10229.27	798.53	40.5330236	-104.5820109	0.28	
16467.00	89.920	357.680	6895.34	10353.47	10323.22	795.26	40.5332815	-104.5820191	0.71	
16562.00	89.980	358.350	6895.43	10447.96	10418.16	791.97	40.5335422	-104.5820274	0.71	
16657.00	89.830	358.590	6895.58	10542.53	10513.12	789.44	40.5338029	-104.5820330	0.30	
16751.00	89.830	359.020	6895.86	10636.15	10607.10	787.48	40.5340609	-104.5820366	0.46	
16846.00	89.980	359.150	6896.02	10730.81	10702.09	785.96	40.5343217	-104.5820385	0.21	
16941.00	89.980	358.490	6896.05	10825.43	10797.07	784.00	40.5345824	-104.5820420	0.69	

REFERENCE WELLPATH IDENTIFICATION

Operator	NOBLE ENERGY, INC	Well	BISHOP A05-783
Field	WELD COUNTY (NOBLE NAD 83 GRID)	API/Legal	05-123-52067
Facility	SEC.07-T06N-R64W	Wellbore	BISHOP A05-783 AWB
Slot	SLOT#25 BISHOP A05-783 (1010'FNL & 441'FEL,SEC.07)		

WELLPATH DATA (186 stations) † = interpolated, ‡ = extrapolated station

MD [ft]	Inclination [°]	Azimuth [°]	TVD [ft]	Vert Sect [ft]	North [ft]	East [ft]	Latitude	Longitude	DLS [°/100ft]	Comments
17131.00	90.040	358.340	6896.02	11014.54	10987.00	778.75	40.5351038	-104.5820538	0.09	
17225.00	90.290	358.580	6895.75	11108.11	11080.96	776.22	40.5353618	-104.5820594	0.37	
17320.00	89.890	359.310	6895.60	11202.75	11175.95	774.47	40.5356226	-104.5820622	0.88	
17415.00	89.980	358.480	6895.71	11297.38	11270.93	772.64	40.5358833	-104.5820652	0.88	
17510.00	89.640	358.710	6896.02	11391.96	11365.90	770.31	40.5361440	-104.5820701	0.43	Last BH MWD Survey
17534.00‡	89.640	358.710	6896.17	11415.86	11389.89	769.77	40.5362099	-104.5820711	0.00	Projection to Bit (202'FNL & 365'FWL,SEC.32)

REFERENCE WELLPATH IDENTIFICATION			
Operator	NOBLE ENERGY, INC	Well	BISHOP A05-783
Field	WELD COUNTY (NOBLE NAD 83 GRID)	API/Legal	05-123-52067
Facility	SEC.07-T06N-R64W	Wellbore	BISHOP A05-783 AWB
Slot	SLOT#25 BISHOP A05-783 (1010'FNL & 441'FEL,SEC.07)		

TARGETS								
Name	TVD [ft]	North [ft]	East [ft]	Grid East [US ft]	Grid North [US ft]	Latitude	Longitude	Shape
OGDP 1 SEC.07-T06N-R64W	1.00	149.54	15.98	3254380.72	1428262.61	40.5053800	-104.5852000	polygon
2D Polygon: dimensions not calculated								
OGDP 1 SEC.08-T06N-R64W	1.00	149.54	15.98	3254380.72	1428262.61	40.5053800	-104.5852000	polygon
2D Polygon: dimensions not calculated								
OGDP1 SEC.05-T06N-R64W	19.00	167.98	-4236.38	3250128.51	1428281.04	40.5055500	-104.6004900	polygon
2D Polygon: dimensions not calculated								
OGDP1 SEC.32-T07N-R64W	19.00	167.98	-4236.38	3250128.51	1428281.04	40.5055500	-104.6004900	polygon
2D Polygon: dimensions not calculated								
BISHOP A05-783 BHL Rev-2 (200'FSL & 381'FWL,SEC.32)	6899.00	11391.84	785.32	3255150.03	1439504.51	40.5362148	-104.5820151	point
BISHOP A05-783 IP for AC	6899.00	1674.44	871.55	3255236.26	1429787.45	40.5095411	-104.5820668	point
BISHOP A05-783 LP Rev-2 (200'FSL & 476'FWL,SEC.05)	6899.00	1231.61	906.81	3255271.51	1429344.64	40.5083247	-104.5819565	point
BISHOP A05-783 LP Rev-3 (200'FSL & 466'FWL,SEC.05)	6899.00	1231.61	896.81	3255261.51	1429344.64	40.5083250	-104.5819924	point
BISHOP A05-783 BHL Rev-1 (200'FSL & 381'FWL,SEC.32)	6973.00	11391.84	785.32	3255150.03	1439504.51	40.5362148	-104.5820151	point
BISHOP A05-783 LP Rev-1 (200'FSL & 476'FWL,SEC.05)	6973.00	1231.61	906.81	3255271.51	1429344.64	40.5083247	-104.5819565	point
DP 136 Hardlines (200'FNL/FSL & 300'FEL/FWL)	7002.00	149.74	-0.15	3254364.58	1428262.81	40.5053810	-104.5852580	polygon
2D Polygon: dimensions not calculated								

WELLPATH COMPOSITION - Ref Wellbore: BISHOP A05-783 AWB Ref Wellpath: BISHOP A05-783 AWP					
Start MD [ft]	End MD [ft]	Positional Uncertainty Model	Log Name/Comment	Wellbore	Survey Date
29.00	2014.00	OWSG MWD rev2 (MS+IFR1)	13.5" NaviTrak Surface OWSG MWD rev2 (MS + IFR1) <134'-2014>	BISHOP A05-783 AWB	2/13/2024
2014.00	17534.00	OWSG MWD rev2 (MS+IFR1)	8.5" Lucida OWSG MWD rev2 (MS+IFR1) <2163'-17510>	BISHOP A05-783 AWB	2/29/2024

REFERENCE WELLPATH IDENTIFICATION			
Operator	NOBLE ENERGY, INC	Well	BISHOP A05-783
Field	WELD COUNTY (NOBLE NAD 83 GRID)	API/Legal	05-123-52067
Facility	SEC.07-T06N-R64W	Wellbore	BISHOP A05-783 AWB
Slot	SLOT#25 BISHOP A05-783 (1010'FNL & 441'FEL,SEC.07)		

WELLPATH COMMENTS				
MD [ft]	Inclination [°]	Azimuth [°]	TVD [ft]	Comment
134.00	0.180	133.480	134.00	First BH MWD Survey
7370.04	89.798	358.026	6901.36	Cross 200' Hardline (200'FSL & 483'FWL,SEC.05)
7373.00	90.016	357.850	6901.36	Shallowest MD for Perf
17510.00	89.640	358.710	6896.02	Last BH MWD Survey
17534.00	89.640	358.710	6896.17	Projection to Bit (202'FNL & 365'FWL,SEC.32)