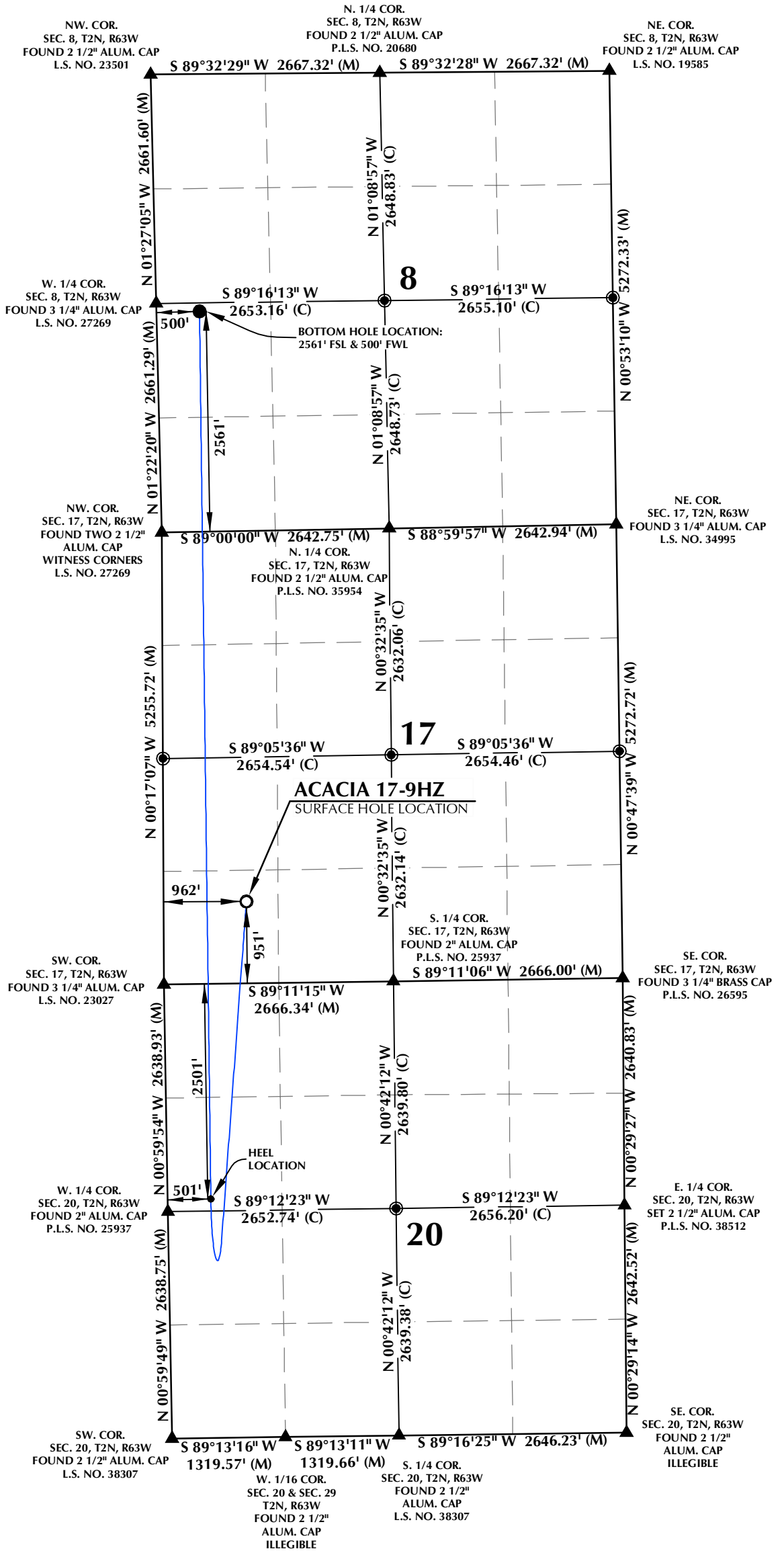


# T2N, R63W

**SURFACE HOLE LOCATION: NAD 83**  
 GROUND ELEVATION= 4859.7'  
 LATITUDE= 40.133749°  
 LONGITUDE= -104.467449°  
**HEEL LOCATION: NAD 83**  
 LATITUDE= 40.124270°  
 LONGITUDE= -104.469071°  
**BOTTOM HOLE LOCATION: NAD 83**  
 LATITUDE= 40.152597°  
 LONGITUDE= -104.469113°  
 LONGITUDE= 40°09'09.348"  
 LONGITUDE= -104°28'08.806"

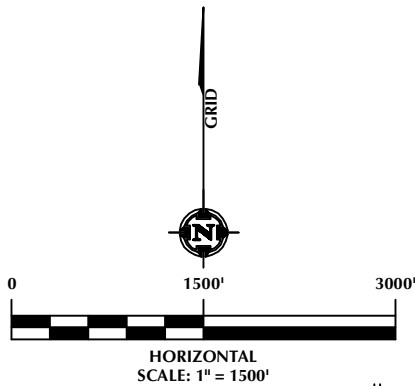


## CERTIFICATE OF SURVEYOR:

THIS IS TO CERTIFY THAT THE ABOVE MAP WAS PREPARED FROM FIELD NOTES OF ACTUAL SURVEYS MADE BY ME OR UNDER MY SUPERVISION AND THAT THE SAME ARE TRUE AND CORRECT TO THE BEST OF MY KNOWLEDGE AND BELIEF. THIS CERTIFICATE DOES NOT REPRESENT A LAND SURVEY PLAT OR IMPROVEMENT SURVEY PLAT AS DEFINED BY C.R.S. 38-58-102 AND CANNOT BE RELIED UPON TO DETERMINE OWNERSHIP.

*Randall K. French*  
 RANDALL K. FRENCH  
 PROFESSIONAL LAND SURVEYOR  
 COLORADO REGISTRATION NUMBER 38512  
 8/11/23

NOTICE: ACCORDING TO COLORADO STATE LAW YOU MUST COMMENCE AN ACTION BASED UPON ANY DEFECT IN THIS SURVEY WITHIN THREE YEARS AFTER YOU FIRST DISCOVER SUCH DEFECT. IN NO EVENT MAY ANY ACTION BASED UPON ANY DEFECT IN THIS SURVEY BE COMMENCED MORE THAN TEN YEARS FROM THE DATE ON THE CERTIFICATION SHOWN HEREON.



## NOTES:

- ▲ INDICATES SECTION CORNER.
- INDICATES CALCULATED CORNER.
- ELEVATION BASED ON NAVD88 (GEOID18).
- BASIS OF BEARINGS DERIVED FROM COLORADO COORDINATE SYSTEM OF 1983, NORTH ZONE.
- ALL MEASURED DISTANCES ARE GRID.
- COMBINED SCALE FACTOR: .99973309 CALCULATED FROM THE E. 1/4 CORNER OF SECTION 20, T2N, R63W.
- OPERATOR: ROB WILSON / PDOP = 1.6
- WELL FOOTAGES ARE MEASURED AT RIGHT ANGLES TO THE SECTION LINES.

## WELL PAD - ACACIA 13-17HZ

ACACIA 17-9HZ  
 WELL LOCATION CERTIFICATE  
 951' FSL & 962' FWL (SW1/4 SW1/4) (SURFACE HOLE LOCATION)  
 LOCATED IN SECTION 17  
 2501' FNL & 501' FWL (SW1/4 NW1/4) (HEEL LOCATION)  
 LOCATED IN SECTION 20  
 2561' FSL & 500' FWL (NW1/4 SW1/4) (BOTTOM HOLE LOCATION)  
 LOCATED IN SECTION 8  
 T2N, R63W, 6TH P.M.  
 WELD COUNTY, COLORADO

**Kerr-McGee Oil &  
 Gas Onshore LP**  
 1099 18th Street  
 Denver, Colorado 80202



## CONSULTING, LLC

SHERIDAN OFFICE  
 1095 Saberton Avenue  
 Sheridan, Wyoming 82801  
 Phone 307-674-0609

LOVELAND OFFICE  
 6706 North Franklin Avenue  
 Loveland, Colorado 80538  
 Phone 970-776-4331

DRAFTED BY:	SJM	CHECKED BY:	RKF
DATE DRAFTED:	8/11/23	DATE SURVEYED:	6/30/23
REVISED:		FILE NAME:	22-135