

NOTES

**\*\*UPDATED TOPOGRAPHIC DATA COLLECTED BY RPG RESOURCES BY USE OF UAV IN APRIL 2024\*\***

**FIELD OBSERVED DISTURBANCE AREA: 24.60 ACRES**

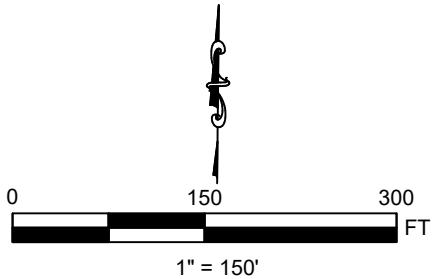
**ACTUAL INTERIM RECLAMATION AREA: 4.22 ACRES**

**PERMITTED INTERIM RECLAMATION AREA: 10.60 ACRES**

**PERMITTED LOD: 27.10 ACRES**

**TOPSOIL STOCKPILE VOL: ~14,798.65 CU YD**

**POND VOL AT 1' FB: ~2,326.55 CU YD**



LEGEND

- ACCESS ROAD
- FIELD OBSERVED DISTURBANCE AREA
- ACTUAL INTERIM RECLAMATION AREA
- WELL HEAD
- POND
- STOCKPILE
- TOPSOIL

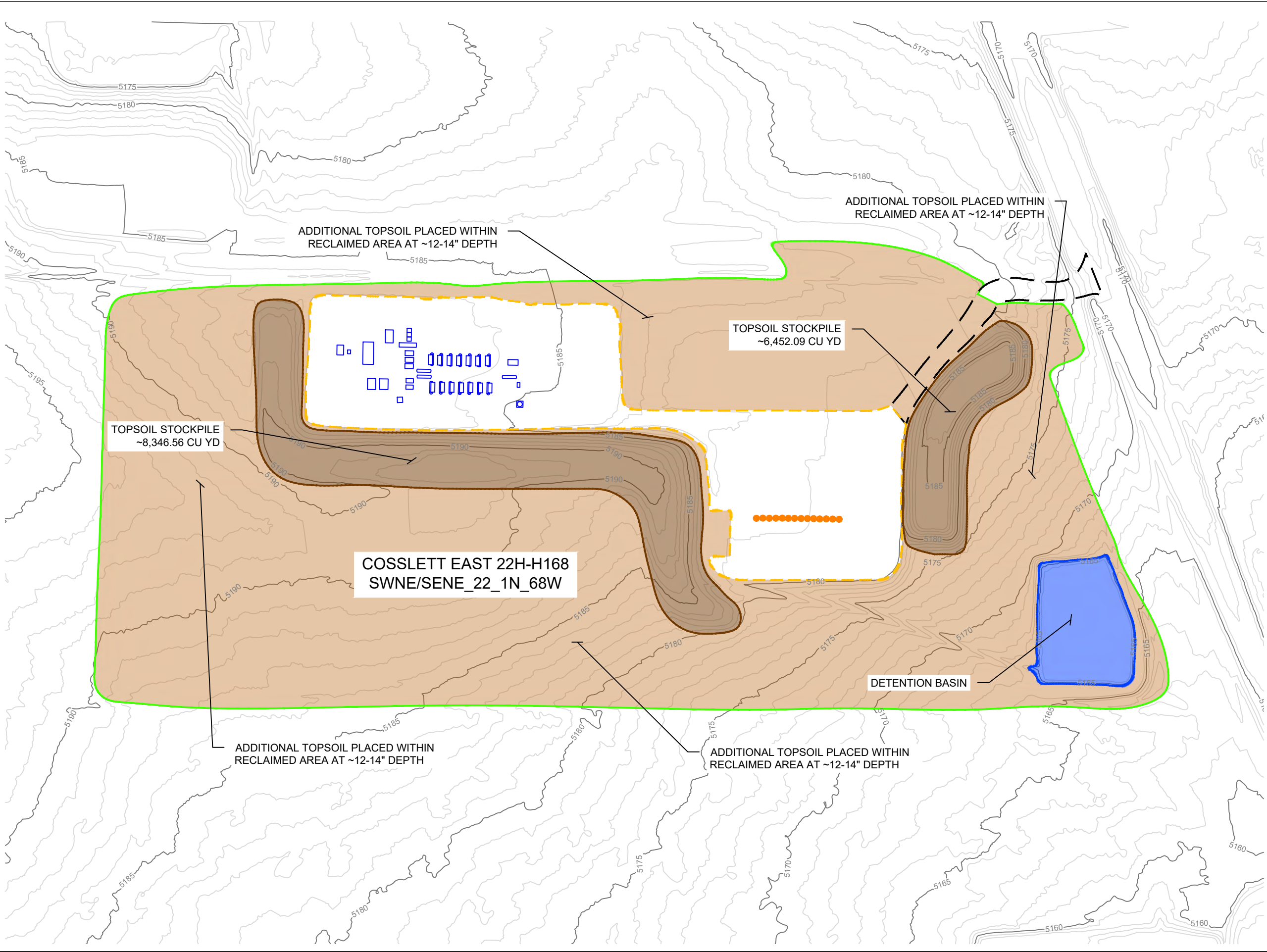


**COSSLETT EAST 22H-H168  
AERIAL INT REC EXHIBITS**

SECTION 22, TOWNSHIP 1N, RANGE 68W,  
WELD COUNTY, COLORADO

SHEET NAME:	SHEET NO.
PAD AERIAL	1 OF 2





### NOTES

**\*\*UPDATED TOPOGRAPHIC DATA COLLECTED BY RPG RESOURCES BY USE OF UAV IN APRIL 2024\*\***

**FIELD OBSERVED DISTURBANCE AREA: 24.60 ACRES**

**ACTUAL INTERIM RECLAMATION AREA: 4.22 ACRES**

**PERMITTED INTERIM RECLAMATION AREA: 10.60 ACRES**

**PERMITTED LOD: 27.10 ACRES**

**TOPSOIL STOCKPILE VOL: ~14,798.65 CU YD**

**POND VOL AT 1' FB: ~2,326.55 CU YD**

1" = 150'

### LEGEND

- MAJOR CONTOUR
- MINOR CONTOUR
- ACCESS ROAD
- FIELD OBSERVED DISTURBANCE AREA
- WORKING PAD SURFACE AREA
- WELL HEAD
- POND
- STOCKPILE
- TOPSOIL
- FACILITY COMPONENT

**RPG RESOURCES**  
a System One company

**COSLETT EAST 22H-H168 AERIAL INT REC EXHIBITS**

SECTION 22, TOWNSHIP 1N, RANGE 68W, WELD COUNTY, COLORADO

SHEET NAME:	SHEET NO.
PAD TOPO	2 OF 2